

Viking Alpaca Maya

Cardigan

1418-1

Size	S - M - L/XL		
Bust	90	- 100	- 110 cm
	35.4 - 39.4 - 43.3 in		
Length:	80	- 80	- 83 cm
	31.5 - 31.5 - 32.7 in		
Sleeve length:	50	- 51	- 51 cm
	19.7 - 20.1 - 20.1 in		

ALTERNATIVE YAN: Viking Alpaca Maya (83% Superfine alpaca, 13% merino wool, 5% nylon), Viking Mohair (78 % mohair, 13 % wool, 9% polyamide), 50 g ball

Black, 703: 4-4-5 balls

Grey, 713: 2-2-3 balls

Circular needle and double pointed needles size 7 mm – US 10½ or 11 – UK/Canadian 2
+ 2 buttons

Gauge: 12 sts = approx. 10 cm/4 in over St st using needles size 7 mm. **Check your gauge to ensure success.**

Back

Using needles size 7 mm and black yarn, cast on 54-60-66 sts. Knit 1 row. Cont working in St st until work measures approx. 80-80-83 cm/31.5-31.5-32.7 in. Bind off.

Left front

Using needles size 7 mm and black yarn, cast on 54-60-66 sts. Knit 1 row. Change to grey yarn, and cont working with stripes: *2 rows with grey – 2 rows with black*, rep *-* until work measures approx. 78-78-81 cm/30.7-30.7-31.9 in. Beg from RS, K49-55-61 – bind off 2 sts (cast on 2 sts over the bound-off sts on next row) – K3. Cont working same as before until front measures same as back. Bind off.

Right front

Work same as for right front, with buttonhole at opposite edge.

Sleeves

Using dpn size 7 mm and black yarn, cast on 26-28-28 sts. Work in rnds in St st. Place a marker mid under sleeve. Inc 1 st both sides of the marker approx. every 3½-4-3½ cm/1.4-1.6-1.4 in until there is altog. 54-56 sts on a rnd. When work measures the given length, or as desired. Bind off. Work same for the other sleeve.

Finishing

Place all pieces on top of each other, with WS inside, fronts overlapping mid front. Sew shoulder seams, 12-13-14 sts for each shoulder. Sew on buttons in a way that fronts will slant slightly on top of each other (see photo). Sew button on RS of left front, and on WS of

right front. Sew side seams, but leave approx. 22-23-24 cm/8.7-9.1-9.4 in for armholes. Sew on sleeves.

Weave in all ends on WS.

Viking Alpaca Maya

Vest

1418-2

Size:	S - M - L		
Bust:	101	- 111	- 121 cm
	39.8 - 43.7 - 47.6 in		
Length:	78	- 80	- 82 cm
	30.7 - 31.5 - 32.3 in		

ALTERNATIVE YAN: Viking Alpaca Maya (83% Superfine alpaca, 13% merino wool, 5% nylon), Viking Mohair (78 % mohair, 13 % wool, 9% polyamide), 50 g ball

Light Grey, 713:

3-4-4 balls

Charcoal, 703:

1-1-1 ball

Knitting needles size 7 mm – US 10½ and 11 – UK/Canadian 2

+ 2 pairs of toggles for pockets

Gauge: 12 sts = approx. 10 cm/4 in over St st using needles size 7 mm. **Check your gauge to ensure success.**

Using needles size 7 mm and light grey yarn, cast on 145 – 157 – 169 sts. Work back and forth in patt A. Place markers at each side, 42 – 45 – 48 sts for both fronts, and 61 – 67 – 73 sts for back.

When work measures approx. 54 – 55 – 56 cm/21.3-21.7-22 in, divide work at sides for armholes. Finish fronts and back separately.

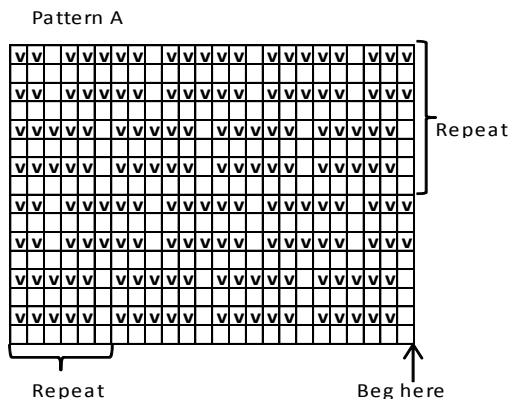
Back: Cont working back and forth until work measures approx. 78 – 80 – 82 cm/30.7-31.6-32.3 in. Bind off.

Right front: Work same as for back.

Left front: Work same as for right front.

Finishing: Sew shoulder seams, 15 – 17 – 20 sts for each shoulder.

Pockets (same for all sizes): Using needles size 7 mm and charcoal clr yarn, cast on 20 sts. Work back and forth approx. 20 cm/9.8 in in K4,P4 rib. Bind off in rib. Work same for the other pocket. Sew pockets on fronts, approx. 6 cm/2.4 in from hem, and 10 cm/4 in from front edges. Sew on clasps/toggles for closing pockets.



□ = Knit (knit on RS, purl on WS)
 ▣ = Purl (purl on RS, knit on WS)

Viking Alpaca Maya

Long cardigan

1418-3

Size:	S-M-L
Bust:	110-120-130 cm 43.3-47.2-51.2 in
Length:	100-110-110 cm 39.4-43.3-43.3 in
Sleeve length:	48- 50- 51 cm 18.9-19.7-20.1 in

ALTERNATIVE YARNS: Viking Alpaca Maya (83% Superfine alpaca, 13% merino wool, 5% nylon), Viking Mohair (78 % mohair, 13 % wool, 9% polyamide), 50 g ball

Grey, 713:

7-7-8 balls

Knitting needles size 7 mm – US 10½ or 11 – UK/Canadian 2

Gauge: 12 sts = approx. 10 cm/4 in over St st using needles size 7 mm. **Check your gauge to ensure success.**

Using needles size 7 mm, cast on 132 – 144 – 156 sts. Purl 1 row. Cont as foll: Seed st over 6 sts, patt A over 24 sts, St st over 24 – 30 – 36 sts, patt A over 24 sts, St st over 24 – 30 – 36 sts, patt A over 24 sts, and Seed st over 6 sts. Place markers at each side, 33 – 36 – 39 sts for each front, and 66 – 72 – 78 sts for back. Cont working back and forth as established, and inc 1 st after patt A, right front after patt A, and left front before patt A. Rep inc every 8th row. When work measures approx. 76 – 85 – 85 cm/29.9-33.5-33.5 in, divide work at sides for armholes. Finish first back.

Back: Cont working back and forth in patt same as before until work measures approx. 100 – 110 – 110 cm/39.4-43.3-43.3 in. Bind off 21 – 23 – 26 sts for each shoulder, and leave rem 24 – 26 – 26 sts on holder.

Right front: Cont working back and forth in patt and rep inc same as before, until front measures same as back. Bind off 21-23-26 sts for shoulder.

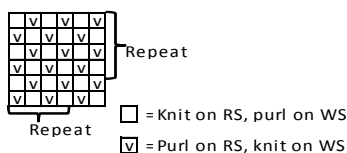
Left front: Work same as for right front.

Sleeves: Using needles size 7 mm, cast on 31 – 33 – 33 sts. Work 7 rnds in Seed st. Cont working in rnds in as foll: St st over 5 – 6 – 6 sts, inc 3 sts over next 21 sts (= 24 sts, patt A), and St st over 5 – 6 – 6 sts. Place a marker beg of rnd (= mid under sleeve). Cont working as established. Inc 1 st both sides of the marker approx. every 3 ½ -3 ½ -3 ½ cm/1.4-1.4-1.4 in until there is 58 – 60 – 60 sts on a rnd, and sleeve measures approx. 48 – 50 – 51 cm/18.9-19.7-20.1 in. Bind off rather loosely.

Finishing: Sew shoulder seams. Sew on sleeves.

Neck band: Slip sts from holders (= back + both fronts) on same needle size 7 mm. Work back and forth 6 rows in Seed st. Bind off, knit-sts purlwise, and purl-sts knitwise.

Seed stitch



measures approx. 20-21-22-23 cm/7.9-8.3-8.7-9.1 in.
Bind off.

Left front

Cont working and rep V-neck dec same as before until there is altog. 10-11-11-12 dec. Cont working without dec until front measures same as back. Bind off 13-15-18-20 sts for shoulder, and slip 8 front band sts on holder.

Work same for right front, rev all shaping.

Sleeves

Using dpn size 3 mm, and light grey Alpaca Fine, cast on 56-58-60-64 sts. Work 3 cm/1.2 in K1,P1 rib.

Work 1 rnd in St st, and inc evenly across number of sts to be 67-71-71-75 sts. Work in rnds in St st and in patt as charted. Place a marker mid under sleeve. Inc 1 st both sides of the marker approx. every 2-2-1 1/2 - 1 1/2 cm/0.8-0.8-0.6-0.6 in until there is altog. 113-117-123-129 sts on a rnd. When sleeve measures the given length, or as desired, bind off.

Work same for the other sleeve.

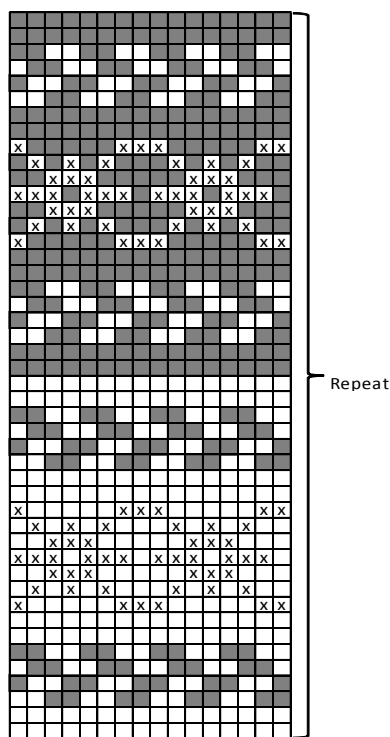
Finishing

Sew shoulder seams.

Right front band: Slip 8 sts from holder on needles size 6 mm, and cast on 1 st at the edge facing neck = 1 selvage st (knit every row). Cont working in rib until neck band reaches mid back. Work same for left front band. Join front bands mid back, and sew along neck edge. Sew on sleeves.

Weave in all ends on WS. Sew on buttons.

PATTERN FOR SLEEVES



□ = white
■ = light grey
⊗ = blue

↑ = mid sleeve repeat

Viking Alpaca Maya

Scarf

Size : 160 X 30 cm
63 x 11.8 in

Light Grey, 713 :

3 balls

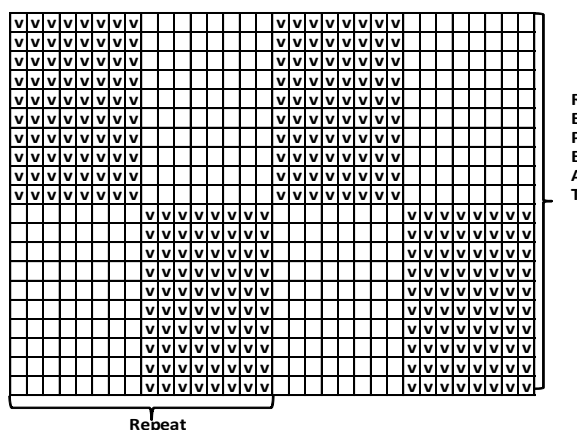
Circular needle 80 cm/31.5 in size 7 mm – US 10½ or 11 – UK/Canadian 2

Gauge: 12 sts = approx. 10 cm/4 in over St st using needles size 7 mm. **Check your gauge to ensure success.**

SCARF:

Using needles size 7 mm, cast on 192 sts. Work in rnds approx. 2 cm/0.8 in K2,P2 rib. Work in rnds in patt I until work measures approx. 26 cm/10.2 in (end with a complete square). Work approx. 2 cm/0.8 in in K2,P2 rib. Bind off in rib.

Patten I



□ = knit
v = purl

Viking Alpaca Maya and Alpaca Fine

Cardigan

1418-5

Size: S-M-L-XL-XXL
Bust: 97-107-115-123-130 cm
38.2-42-45.3-48.3-51.2 in
Length: 89-90-91-92--93 cm
35-35.4-35.8-36.2-36.5 in
Sleeve length: 50-51-52-52-53 cm
19.7-20.1-20.5-20.5-20.9 in

ALTERNATIVE YARNS: Viking Alpaca Maya (83% Superfine alpaca, 13% merino wool, 5% nylon), Viking Mohair (78 % mohair, 13 % wool, 9% polyamide), 50 g ball

Alpaca Maya: beige 707:

4-5-5-6-6 balls

Alpaca Fine: beige 607: 6-7-7-7-8 balls

Circular needle and double pointed needles size 6 and 7 mm – US 10 and 10½ or 11 – UK/Canadian 4 and 2

Gauge: 12 sts = approx. 10 cm/4 in over St st using needles size 7 mm. **Check your gauge to ensure success.**

Using needles size 6 mm and double yarn, Alpaca Maya beige + Alpaca Fine beige, cast on 114-126-136-146-154 sts. Work back and forth 5 cm/2 in in St st. Knit 1 row from WS = folding edge, inc same time 1 st beg and end of the row (= selvage sts, knit every row). Work 5 cm/2 in St st. Change to needles size 7 mm. When work measures 15 cm/5.9 in, measured from folding edge, place markers at each side, 28-31-34-36-38 sts for both fronts, and 58-64-68-74-78 sts for back. Dec for pockets as foll:

Beg from RS, work until 6-7-8-8-9 sts rem before 1st side marker, turn (leave rem sts aside), work first 22-24-26-28-29 sts of right front, turn. Work until 3 sts rem, K2tog + K1, turn. Rep dec every 2nd row until pocket dec measures approx. 16 cm/5.9 in (measured straight upright). Leave these sts aside, and cont working over mid panel sts. K1 = selvage st, inc 1 st, work until 23-25-27-29-30 sts rem, inc 1 st, K1 = selvage st. Leave left front sts aside = 22-24-26-28-29 sts. Cont working back and forth same as before, and inc 1 st at each edge inside selvage sts every 2nd row until work measures same as right front. Leave mid panel sts aside. Work for left front over rem sts, and dec same as for right front, but in reverse.

Slip all pieces on same needle again, and cont working back and forth over all sts until work measures 65 cm/25.6 in, measured from folding edge. Bind off 8 sts at each side for armholes = 4 sts both sides of the markers. Leave work aside, and knit the sleeves.

Sleeves

Cast on same as body 34-34-34-36-36 sts. Work in rnds 5 cm/2 in in St st + purl 1 rnd = folding edge, + 5 cm/2 in in St st. Place a marker mid under sleeve = beg of rnd. Change to needles size 7 mm. Cont working in St st. Inc 1 st both sides of the marker approx. every 5 ½-5-4 ½-4 ½-4 cm/2.2-2-1.8-1.8-1.6 in until there is 50-52-54-56-58 sts on a rnd. When work measures the given length, or as desired, measured from folding edge, bind off 8 sts mid under sleeve = 4 sts both sides of the marker. Leave work aside, and knit same for the other sleeve.

Yoke

Slip all pieces on same needle, with sleeves over the bound-off armhole sts = 190-206-220-234-246 sts. Place markers at each 4 seamline.

Beg from RS. Cont working back and forth same as before, and beg raglan-dec: Work until 3 sts rem before a marker, sl 1 st, K1, pssso, K2, K2tog. Rep dec at each 4 seam line every 4th row 1-1-0-0 times, and after that every 2nd row until 54-62-68-66-70 sts rem. Change to needles size 6 mm and double beige Alpaca Fine beige. Work 1 rnd in St st, and dec evenly across number of sts to be 48-48-48-52-52 sts. Cont working in K2,P2 rib inside selvage sts. When neckband measures approx. 8 cm/3.1 in, bind off rather loosely.

Pockets

Using needles size 6 mm and double beige Alpaca Fine, cast on 38 sts. Place a marker in the middle = 19 sts on each side. Work in St st, and dec 1 st both sides of the marker every 2nd row until work measures approx. 16 cm/6.3 in. Bind off. Fold pocket in double, with WS outwards. Sew bound-off edge sts tog = top of the pocket. Sew cast-on edge sts = bottom of the pocket. Sew on pockets to the slanting edges of pocket openings of the cardigan.

Pocket edges: Using needles size 6 mm and double Alpaca Fine, pick or knit up along slanting edge of right front 22 sts. Work back and forth approx. 6 cm/2.4 in K2,P2 rib. Bind off rather loosely.

Work same for the other pocket.

Fold pocket edges in double, and sew on WS.

Finishing

Sew underarm seams.

Fold neckband in double, and sew on WS-

Fold lower edge and sleeve edges in double, and sew on WS.

Front bands

Using needles size 6 mm and double Alpaca Fine, pick or knit up 142-142-142-146-146 sts along right front edge. Work back and forth altog. 8 rows in K2,P2 rib. Bind off in rib. Work same for left front band.

Weave in all ends on WS.

Viking Alpaca Maya

Cardigan and scarf

1418-6

Size:

One size

ALTERNATIVE YARNS: Viking Alpaca Maya (83% Superfine alpaca, 13% merino wool, 5% nylon), Viking Mohair (78 % mohair, 13 % wool, 9% polyamide), 50 g ball

Cardigan

Off-White, 702:

7 balls

Scarf

Off-White, 902:

2 balls

Knitting needles size 6 and 7 mm – US 10 and 10½ or 11 – UK/Canadian 4 and 2

Gauge: 12 sts = approx. 10 cm/4 in over St st using needles size 7 mm. **Check your gauge to ensure success.**

Pattern A

1st row: P1, *sl 1 st tbl holding yarn back of the work, K2, pssso over 2 knit-sts, P2*, rep *-*, and end with P1.

2nd row: K1, *P1, 1 yo, P1, K2*, rep *-*, and end with P1.

3rd row: P1, *K3, P2*, rep *-*, and end with P1.

4th row: K1, *P3, K2 *, rep *-*, and end with K1.
Rep these 4 rows.

Back: Using needles size 6 mm, cast on 64 sts. Work back and forth 4 rows in Garter st. Change to needles size 7 mm. Work as foll: 1 selvage st (= knit every row), patt A over 62 sts, 1 selvage st. Cont working as established. Inc 1 st at each edge inside selvage st approx. every 1 ½ cm/0.6 in until there is 152 sts on a row. Cont working back and forth without inc until work measures approx. 85 cm/33.5 in. Bind off.

Right front: Using needles size 7 mm, cast on 42 sts. Work back and forth in St st, and inc 1 st inside selvage st at the end of row approx. every 1 ½ cm/0.6 in until there is 87 sts on a row. Cont working back and forth without inc until front measures same as back. Bind off.

Left front: Work same as for right front, rev all shaping.

Finishing: Sew side seams. Join shoulder seams, 65 sts for each shoulder (= 22 sts for neck).

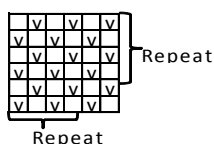
Sleeve edges: Using needles size 7 mm, cast on 24 sts. Work in rnds in K2,P2 rib. When work measures approx. 15 cm/5.9 in, inc 1 st to each knit and purl stripe. Cont working in K3,P3 rib until work measures approx. 20 cm/7.9 in. Bind off **loosely**. Work same for the other edge.

Finishing: Sew sleeve edges to the sleeves.

Scarf

Using needles size 7 mm, cast on 36 sts. Work back and forth 7 rows in Seed st. Cont working back and forth as foll: Seed st over 6 sts, St st over 24 sts, and Seed sts over 6 sts. When work measures approx. 196 cm/78.2 in, work 6 rows in Seed st. Bind off, knit-sts purlwise, and purl-sts knitwise.

Seed stitch



□ = Knit on RS, purl on WS

▣ = Purl on RS, knit on WS

Viking Alpaca Maya

Poncho

1418-7

Size

one size

Length:

70/72 cm

27.6/28.3 in

ALTERNATIVE YARNS: Viking Alpaca Maya (83% Superfine alpaca, 13% merino wool, 5% nylon), Viking Mohair (78 % mohair, 13 % wool, 9% polyamide), 50 g ball

Grey, 713:

4 balls

Circular needle size 7 mm – US 10½ or 11 – UK/Canadian 2

Gauge: 12 sts = approx. 10 cm/4 in over St st using needles size 7 mm. **Check your gauge to ensure success.**

Using needles size 7 mm and light grey yarn, cast on 180 sts. Knit 1 rnd, and after that *purl 2 rnds – knit 2 rnds*, rep *-* altog. 3 times. Cont working in rnds in St st until work measures approx. 20 cm/7.9 in. Work as foll: Beg from beginning of the rnd, place a marker between first and last sts of the rnd – St st over 15 sts – bind off 1 st for arm opening – work 58 sts – bind off 1 st for arm opening – work 15 sts – place a marker = side – St st over rem sts. Work each part separately. Work over back sts = 120 sts, until work measures 20 cm/7.9 in. Work then over mid front sts = 58 sts, until font measures 20 cm/7.9 in. Slip all sts on same circular needle, and cast on 1 st over both arm openings. Place new markers around these new sts. Dec 1 st both sides of the markers as foll: Work until 3 sts rem before a marker, K2togtbl, K1 (= marked st), K2tog. Rep dec at both markers every 2nd rnd altog. 24 times. 84 sts rem on a rnd. Work 1 rnd in St st, and dec evenly across number of sts to be 60 sts. Cont working in rnds in K2,P2 rib until collar measures approx. 18 cm/7.1 in. Bind off in rib. Weave in all ends on WS.

Viking Alpaca Maya

Poncho

1418-8

<u>Size</u>	<u>One size</u>
<u>Shoulder width:</u>	<u>90 cm</u>
	<u>35.4 in</u>
<u>Length, mid front:</u>	<u>75 cm</u>
	<u>29.5 in</u>
<u>Width, hem:</u>	<u>246 cm</u>
	<u>97.1 in</u>

ALTERNATIVE YARN: Viking Alpaca Maya (83% Superfine alpaca, 13% merino wool, 5% nylon), Viking Mohair (78 % mohair, 13 % wool, 9% polyamide), 50 g ball

Grey, 715:

4 balls

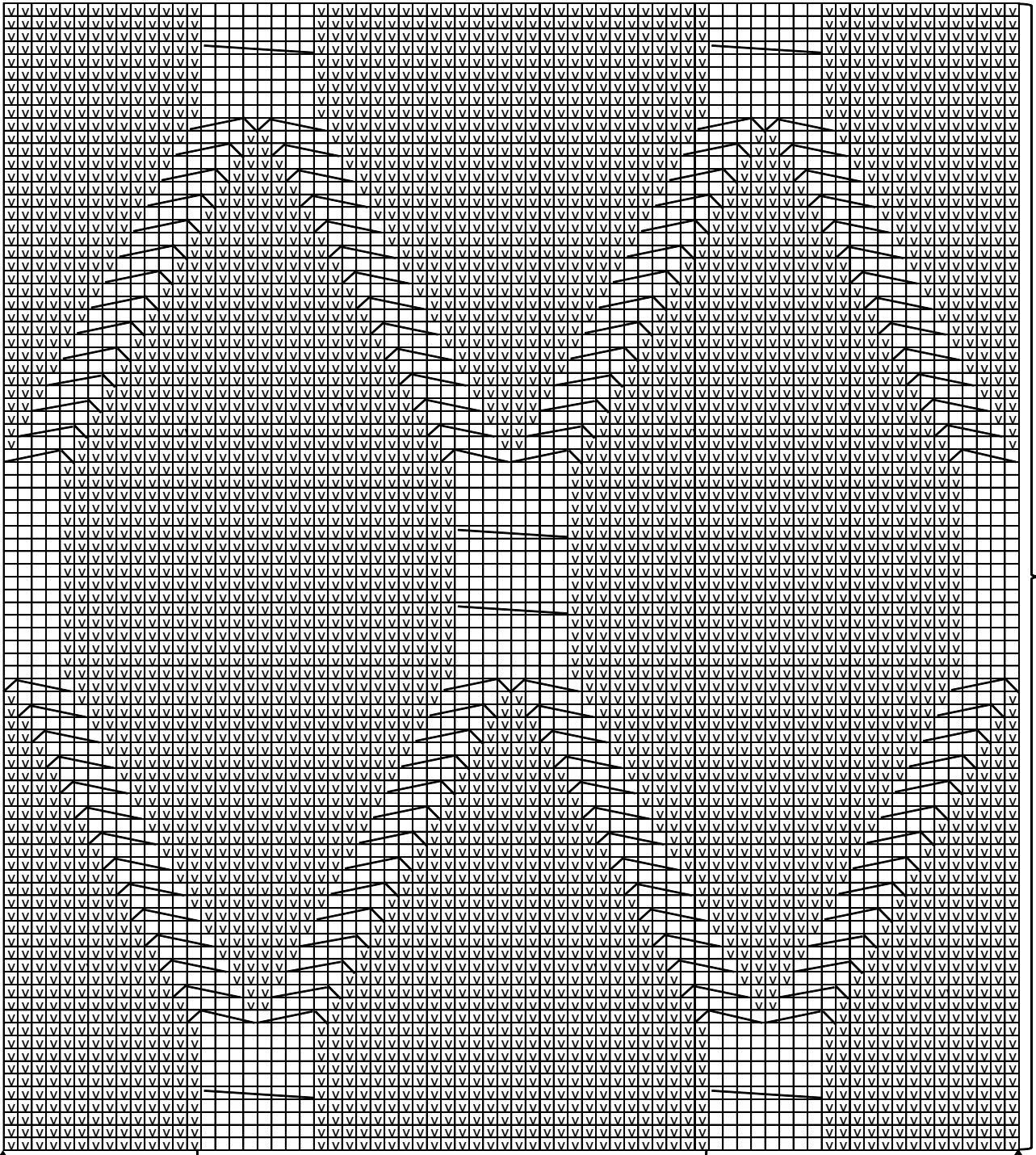
Knitting needles size 6 and 7 mm – US 10 and 10½ or 11 – UK/Canadian 4 and 2

Gauge: 12 sts = approx. 10 cm/4 in over St st using needles size 7 mm. **Check your gauge to ensure success.**

Using needles size 7 mm, cast on 296 sts. Divide sts in 4 parts, 74 sts for each part. Place a marker after each part = mid back, left side, mid front, and right side.

Beg rnd 2 sts before mid back marker. Work as foll: St st over 4 sts, patt I over 144 sts, St st over 4 sts (= mid front), and patt I over 144 sts. Cont working in rnds as established. When work measures approx. 2 cm/0.8 in, beg dec mid front and back: Work until 3 sts rem before a marker, K2tog, K2, sl 1 st, K1, pss. Rep dec mid front and back every 2nd rnd. When 108 sts rem, dec same at the side markers. Rep all dec

every 2nd rnd until 88 sts rem on a rnd. Change to needles size 6 mm, and cont working in rnds approx. 10 cm/4 in in K1,P1 rib. Bind off in rib.








Repeat

End here

Worked 3 times

Begin here

-  = Purl
-  = Knit
-  = Sl 4 sts on cn. and hold to front. K4. knit sts from cn
-  = Sl 4 sts on cn. and hold to front. P1. knit sts from cn
-  = Sl 1 st on cn. and hold to back. K4. purl st from cn

Viking Kid Mohair

Sweater

1418-9

Size:	S-M-L-XL
Bust:	87-98-110-123 cm 34.3-38.6-43.3-48.3 in
Length:	64-65-66-67 cm 25.2-25.6-26-26.4 in
Sleeve length:	48-49-50-51 cm 18.9-19.3-19.7-20.1 in

ALTERNATIVE YARNS: Viking Kid Mohair (70% Kid-Mohair, 18% merino wool, 12% nylon), 50 g ball

White, 702 : 6-7-8-9 balls
Grey, 715: 1-1-1-1 ball

Crochet hook size 5 mm – US H/8 – UK/Canadian 6
Double pointed needles size 7 mm – US 10½ or 11 – UK/Canadian 2
+ 2 pairs of grey toggles/clasps

Gauge: 18 sts = approx. 10 cm/4 in over St st using needles size 7 mm. **Check your gauge to ensure success.**

Gauge: 13 dc = approx. 10 cm/4 in using crochet hook size 5 mm. **Check your gauge to ensure success.**

Crochet abbreviations:

ch(-st) = chain stitch, sl st = slip stitch, sc = single crochet, dc = double crochet

Front (crochet)

Using crochet hook size 5 mm and white yarn, ch59-67-75-83.

1st row: 1st dc to 4th ch-st from hook, 1 dc to every ch-st = 56-64-72-80 dc, turn.

2nd row: *Ch3 = first dc, FPdc (= Front Post double crochet) 4 times = 4 dc, BPdc (= Back Post double crochet) 4 times st = 4 dc*, rep *-* across the row, turn.

3rd row: *Ch3 = first dc, FPdc 4 times = 4 dc, BPdc 4 times = 4 dc*, rep *-* across the row, turn.

4th row: *Ch3 = first dc, BPdc 4 times = 4 dc, FPdc 4 times = 4 dc*, rep *-* across the row, turn.

5th row: *Ch3 = first dc, BPdc 4 times = 4 dc, FPdc 4 times = 4 dc*, rep *-* across the row, turn.

Rep rows 2-5 until work measures 64-65-66-67 cm/25.2-25.6-26-26.4 in.

Back

Work same as for front, but 7 cm/2.8 in longer.

Sleeves (knit)

Using needles size 4½ mm and grey yarn, cast on 44-44-48-48 sts. Work in rnds 5 cm/2 in in K2,P2 rib. Change to white yarn. Place a marker mid under

sleeve = beg of rnd. Cont working in St st, and inc evenly across 1st rnd number of sts to be 54-60-66-72 sts. Inc 1 st both sides of marker approx. every 3 ½-4-4 ½ -4 cm/1.4-1.6-1.8-1.6 in.

When sleeve measures 48-49-50-51 cm/18.9-19.3-19.7-20.1 in (or as desired), and there is 76-80-86-94 sts on a rnd, bind off rather loosely.

Finishing

Crochet (= sl sts) shoulder seams from RS (back is approx. 7 cm/2.8 in longer than front), approx. 7-8-9-10 cm/2.8-3.1-3.5-4 in for each shoulder. Sew side seams, leave 21-22-24-26 cm/8.3-8.7-9.4-10.2 in for armholes. Join sleeves from RS by crocheting (= sl sts).

Sew on toggles/clasps on each shoulder.

Weave in all ends on WS.

Viking Maya

Cardigan

1418-10

Size:	S-M-L-XL-XXL
Bust:	93-100-105-111-123 cm 36.6-39.4-41.4-43.7-48.3 in
Length:	68-69-70-71-72 cm 26.8-27.2-27.4-28-28.3 in
Sleeve length:	49-50-51-52-53 cm 19.3-19.7-20.1-20.5-20.9 in

ALTERNATIVE YARNS: Viking Alpaca Maya (83% Superfine alpaca, 13% merino wool, 5% nylon), Viking Mohair (78% mohair, 13% wool, 9% polyamide), 50 g ball

Light Grey, 713: 3-4-4-4-5 balls

Blue, 726: 3-3-3-4-4 balls

Crochet hook size 5 mm – US H/8 – UK/Canadian 6
Double pointed needles and short circular needle size 7 mm – US – UK/Canadian
+ zipper

Gauge: 12 sts = approx. 10 cm/4 in over St st using needles size 7 mm. **Check your gauge to ensure success.**

Gauge: 16 sc = approx. 10 cm/4 in using crochet hook size 5,5 mm. **Check your gauge ensure success.**

Crochet abbreviations:

ch(-st) = chain stitch, sl st = slip stitch, sc = single crochet, dc = double crochet

Tip: Place markers to first and last st, and move markers after each row to ensure the number of sts remaining same throughout the whole project.

Back (crochet lengthways)

Using crochet hook size 5,5 mm and light grey yarn, ch109-111-113-115-117. Beg from 2nd ch-st from the hook, 1 sc to every ch-st = 108-110-112-114-116 sc, turn.

1st row: Ch1 = 1st sc, 1 sc to back loop of each st, turn.
2nd row = same as 1st row.

Cont working back and forth in the same way with stripes, *2 rows with grey – 2 rows with blue*, rep *-*

When work measures approx. 46-49-52-55-61 cm/18.1-19.3-20.5-21.7-24 in = width of back, end with 2 light grey rows. Break yarn, and draw through the loop.

Right front (crochet lengthways)

Using crochet hook size 5,5 mm and blue yarn, ch109-111-113-115-117. Beg from 2nd ch-st from the hook, 1 sc to every ch-st = 108-110-112-114-116 sc, turn. Cont working with stripes same as for until front measures 13-14-15-18-21 cm/5.1-5.5-5.9-7.1-8.3 in. Bind off for neck edge every 2nd row as foll: 1x5 sl st, 1x3 sl st, 1x2 sl st, and 1x1 sl st. Cont working until front measures approx. 23-24-25-27-30 cm/9.1-9.4-9.8-10.6-11.8 in, end with 2 blue rows.

Left front: Work same as for right front.

Sleeves (knit)

Using needles size 7 mm and light grey yarn, cast on 26-26-28-28-30 sts. Work in rnds 3 cm/1.2 in in K1,P1 rib. Work 1 rnd in St st, and inc evenly across number of sts to be 34-36-38-40-42 sts. Change to blue yarn. Place a marker mid under sleeve = beg of rnd. Cont working in St st with stripes, *2 rnds with blue, 2 rnds with light grey*, rep *-*. Inc 1 st both sides of the marker approx. every 4-4-4-4 ½ cm/1.6-1.6-1.6-1.8 in until there is 56-58-60-62-64 sts on a rnd. When sleeve measures the given length, o as desired, bind off rather loosely.

Finishing

Mark approx. 19-20-20-21-21 cm/ 7.5-7.9-7.9-8.3-8.3 in mid back for neck edge.

Sew shoulder seams.

Sew side seams, leaving approx. 23-24-25-26-27 cm/9.1-9.4-9.8-10.2-10.7 in for armholes (measure width from sleeve top).

Sew on sleeves.

Neck band

Using needles size 7 mm and light grey yarn, pick or knit up approx. 55-59-61-63-63 sts around neck edge. Work back and forth approx. 7 cm/2.8 in in K1,P1 rib. Bind off rather loosely.

Fold neck band in double, and sew on WS.

Weave in all ends on WS.

Sew on zipper.

Viking Alpaca Maya and Alpaca Fine

Sweater

1418-11

Size: XS-S-M-L-XL-XXL

Bust: 88-96-104-112-120-128 cm

34.6-38.8-41-44.1-47.2-50.1 in

Length: 64-65-66-67-68-68 cm

25.2-25.6 in

Sleeve length: 47-48-49-50-51-51 cm

18.5-18.9-19.3-19.7-20.1-20.1 in

ALTERNATIVE YARN: Viking Alpaca Maya (85% Superfine alpaca, 15% Highland wool), Viking Mohair (78 % mohair, 13 % wool, 9% nylon), 50 g ball

And: Viking Alpaca Fine (85% superfine Alpaca, 15 % highland wool), 50 g ball

Alpaca Maya, white 700 : 4-5-5-6-6-7 balls

Alpaca Maya turquoise 768 : 1-1-1-1-1-1 ball

Alpaca Fine, grey 615: 4-5-5-6-6-7 balls

Circular needle and double pointed needles size 6 and 7 mm – US 10 and 10½ or 11 – UK/Canadian 4 and 2

Gauge: 12 sts = approx. 10 cm/4 in over St st using needles size 7 mm. **Check your gauge to ensure success.**

Back

Using needles size 7 mm and double yarn, Alpaca Maya white + Alpaca Fine grey, cast on 54-58-62-66-70-74 sts. Work back and forth 8 cm/3.1 in in patt as charted. Cast on 54-58-62-66-70-74 sts to the end of the row = **Front**

There is now 108-116-124-132-140-148 sts on a rnd. Cont working in rnds in patt as charted. Place markers at each side, 54-58-62-66-70-74 sts for both front and back. Cont working until work measures 41 cm/16.1 in (same for all sizes). Bind off 8 sts at each side for armholes = 4 sts both sides of the markers.

Leave work aside, and knit the sleeves.

Sleeves

Using needles size 6 mm and turquoise Maya (single thread), cast on 32-32-32-36-36-36 sts. Work 2 rnds in K2,P2 rib. Change to double yarn, Maya white + Alpaca Fine grey, and cont working in rib until work measures 6-6-6-6-7-7 cm/2.4-2.4-2.4-2.8-2.8 in.

Change to needles size 7mm. Work in patt as charted. Place a marker mid under sleeve = beg of rnd. Inc evenly across 1st rnd number of sts to be 36-40-40-44-44-48 sts. Inc 1 st both sides of the marker approx. every 6 ½-8-7-8 ½-7-8 ½ cm/2.6-3.1-2.8-3.3-2.8-3.3 in. When sleeve measures 47-48-49-50-51-51 cm/18,5-18.9-19.3-19.7-20.1-20.1 in, or as desired,

and there is 48-50-52-54-56-58 sts on a rnd, bind off 8 sts mid under sleeve = 4 sts both sides of the marker. Leave work aside, and knit same for the other sleeve.

Yoke

Slip all pieces on same circular needle size 7 mm, with sleeves over the bound-off armholes = 172-184-196-208-220-232 sts. Place markers at each 4 seam lines. Beg raglan-dec:

Work until 2 sts rem before a marker, sl 1 st, K1, pssso, K2tog. Rep dec at each 4 seam line every 2nd rnd until 60-56-60-64-68-64 sts rem = 14-16-17-18-19-21 dec.

Collar

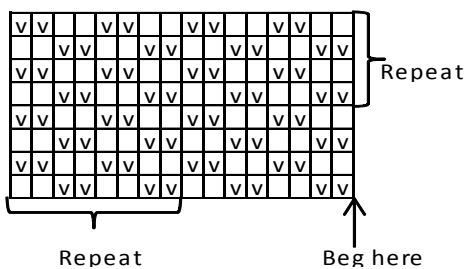
Change to needles size 6 mm. Work 1 rnd in St st, and adjust number of sts to be 56-56-60-60-64-64 sts.

Work in K2,P2 rib. When collar measures 17 cm/6.7 in, change to turquoise Maya (single thread), and work 2 rnds same as before. Bind off rather loosely in rib.

Finishing

Sew underarm seams. Weave in all ends on WS.

Fold collar in double on front.



□ = Knit on RS, purl on WS

▣ = Purl on RS, knit on WS