

Viking Merino Soft

Coat and hat

1405-1

Size:	Babyborn – 42 cm
	Babyborn –16.5 in
Chest:	29 cm
	11.4 in
Length:	26 cm
	10.2 in
Sleeve length:	8 cm
	3.1 in
Circumference	30 cm
	11.8 in

ALTERNATIVE YARNS: Viking Merino Soft (100% Merino Wool-Superwash), Viking Baby ull (100% merino wool), Viking pure milk fiber (100% milk fiber), Viking Alpaca Fine (85% Superfine Alpaca, 15% Highland wool), 50 g ball

Beige, 707	1 ball
Light Violet, 767	1 ball
Dark Violet, 769	1 ball

Short circular needle size 3 mm – US 2 or 3 – UK/Canadian 11
Crochet hook size 3½ mm – US – UK/Canadian
+ 1 small button

Gauge: 28 sts = approx. 10 cm/4 in over St st using needles size 3 mm. **Check your gauge to ensure success.**

COAT

Using needles size 3 mm and dark violet yarn, cast on 149 sts. Work back and forth in Garter st, 2 rows with dark violet, and 2 rows with light violet. Change to beige yarn. Work as foll: *P5, sl 1 st*, rep *-* across the row, and end with P5. Knit 1 row (= WS). Cont working as established. When work measures approx. 4 cm/1.6 in, dec 1 st in every second purl panel = knit 3rd and 4th st tog (on WS row) = 12 sts dec altog. Cont working with 1 st less in the purl panels with dec until work measures approx. 7 cm/2.8 in. Rep dec in purl panels without prev dec = 12 sts dec altog. Cont working with 4 sts in each purl panel until work measures approx. 9 cm/3.5 in. Dec 1 st in each purl panel = knit 2nd and 3rd st tog (on WS row) = 99 sts on a row. Cont working with 3 sts in each purl panel until work measures approx. 14 cm/5.5 in. Place markers each side, 49 sts for back, and 25 sts for both fronts. Bind off 8 sts at each side = 4 sts both sides of the markers. Finish back and fronts separately.

Back:

Cont working back and forth, and beg raglan dec:
Beg from RS: P1, K1, K2togtbl, work until 4 sts rem, K2tog, K1, P1. Knit next row.
Rep dec every 2nd row 12 times (= on RS), and until 17 sts rem. Bind off.

Right front:

Cont working back and forth, and dec for raglan end of every 2nd row (on RS row): Work until 4 sts rem, K2tog, K1, P1. When armhole measures approx. 4 cm/1.6 in, bind off 4 sts for neck edge. Rep raglan dec same as before, and

bind off at neck edge every 2nd row 2x2 sts. Cont working until 3 sts rem, and front measures same as back. Bind off.

Left front:

Work same as right front, rev all shaping.

Sleeves:

Using needles size 3 mm and dark violet yarn, cast on 25 sts. Work in Garter st same as for body. Change to beige yarn. Cont working as foll: P3, *P5, sl 1 st*, rep *-* 2 times, end with P3. Knit 1 row. Cont working as established. Inc 1 st at each edge every 2nd row until there is altog. 37 sts on a row (work in patt over inc sts). When sleeve measures 8 cm/3.1 in, bind off 4 sts at each edge. Cont working back and forth, and beg raglan-dec:
Beg from RS row, P1, K1, K2tog, work until 4 sts rem, K2togtbl, K1, P1. Rep dec every 2nd row until 5 sts rem, and armhole measures same as for back and fronts. Bind off. Work same for the other sleeve.

Finishing:

Sew sleeve seams. Sew on sleeves.

Neck band and front bands:

Beg from lower edge of right front. Using needles size 3 mm and light violet yarn, pick or knit up along right front, neck edge, and left front approx. 148 sts. Knit 1 row = 1 rill with light violet yarn. Change to dark violet yarn, and work 2 rows in Garter st. Inc same time 1 st every 2nd row at each side beg of neck edge dec. Bind off.
Crochet a buttonhole loop (= ch7) at right front neck edge. Sew a button on left front neck edge. Weave in all ends on WS.

HAT

Using needles size 3 and dark violet yarn, cast on 84 sts. Work 4 rnds in Garter st. Change to light violet yarn, and work 2 rnds in Garter st. Change to beige yarn, and work in same patt as for coat. When work measures 8 cm/3.1 in, beg dec for crown. Rep dec every 2nd rnd: Purl tog 3rd and 4th st of each purl panel, work 1 rnd without dec. Purl tog 2nd and 3rd st of each purl panel, work 1 rnd without dec. Purl tog 1st and 2nd st of each purl panel, and work 1 rnd without dec. Purl all sts tog until 11 sts rem. Break yarn, thread through rem sts, tighten the yarn, and weave in on WS. Crochet loops (= ch10) with each 3 clrs, and fasten on top.
Weave in all ends on WS.

Viking Merino Soft

Cardigan, pants and hat

1405-2

Size:	Babyborn – 42 cm
	Babyborn –16.5 in
Chest:	32 cm
	12.6 in
Length:	16 cm
	6.3 in
Sleeve length:	9 cm
	3.5 in
Circumference	30 cm
	11.8 in
Leg length	10 cm
	4 in

ALTERNATIVE YARNS: Viking Merino Soft (100% Merino Wool-Superwash) Viking Baby ull (100 % merino wool), Viking pure milk fiber (100% milk fiber), Viking Alpaca Fine (85% Superfine Alpaca, 15% Highland wool), 50 g ball

Light Pink, 764 2 balls
Pink, 765 1 ball

Short circular needle and pair of short double pointed needles size 3 mm – US 2 or 3 – UK/Canadian 11
Crochet hook size 2 ½ mm – US B/1 or C/2 – UK/Canadian 12
+ 3 small buttons

Gauge: 28 sts = approx. 10 cm/4 in over St st using needles size 3 mm. **Check your gauge to ensure success.**

Abbreviations:

ch = chain st, dc = double crochet, sl st = slip st

CARDIGAN

Using needles size 3 mm and pink yarn, cast on 194 sts. Work back and forth 7 rows in Garter st, and knit all sts tog in pairs on last row = 97 sts. Change to light pink yarn, and purl 1 row (= WS).

Work in patt I as charted, beg from RS. Cont working in St st until work measures 9 cm/3.5 in. Place markers each side, 23 sts for both fronts, and 51 sts for back. Bind off 6 sts at each side (3 sts both sides of the markers). Leave work aside, and knit the sleeves.

Sleeves

Using needles size 3 mm and pink yarn, cast on 48 sts. Work in Garter st same as for body. Change to light pink yarn, and knit on 1st rnd all sts tog in pairs = 24 sts. Place a marker beg of rnd = mid under sleeve. Work in patt I as charted. Inc 1 st both sides of the marker every 4th rnd until there is 36 sts on a rnd. When sleeve measures approx. 9 cm/3.5 in, bind off 6 sts mid under sleeve. Leave work aside, and knit same for the other sleeve.

Yoke

Slip all sts (= body and sleeves) on same circular needle size 3 mm, with sleeves over the sts bound-off for armholes = 145 sts.

Place markers at each 4 seam lines. Cont working back and forth in St st, and beg raglan-dec: Work until 3 sts rem before a marker, K2tog, K2, K2togtbl, rep dec at each 4 seam line every 2nd row, altog. 12 times = 49 sts rem. Bind off rather loosely.

Finishing

Sew under arm seams, and lower edge seams of the sleeves.

Crochet dc-row with light pink yarn along front edges and neck edge. Beg from above ruffled edge, crochet across right front edge, along neck edge, and across left front edge until the ruffled edge. Break yarn, and draw through the loop.

Weave in all ends on WS.

Crochet 3 buttonholes on right front band:

Insert hook to 11th st from lower edge, fasten yarn with 1 sl st, ch3, skip 1 st, 3 sl st, ch3 m, skip 1 st, 3 sl st, ch3 lm,

skip 1 st, 1 sl st. Break yarn, draw through the loop. Weave in ends on WS. Sew on 3 small buttons.

PANTS

Beg from lower edge of one leg. Using needles size 3 mm and pink yarn, cast on 40 sts. Work back and forth in Garter st same as for cardigan. Change to light pink yarn, and cont working in rnds. Place a marker beg of rnd = inner seam of the leg. Cont working in rnds in patt I as charted. After patt I work in rnds in St st. Inc 1 st both sides of the marker approx. every 2 cm/0.8 in until there is 48 sts on a rnd. When leg measures 10 cm/4 in, leave work aside and knit same for the other leg.

Slip both legs on same circular needle size 3 mm, inner seams facing each other = 96 sts. Place markers mid front and back, and at each side = 24 sts for each part. Beg from mid back, and cont working in rnds in St st. Dec 1 st both sides of the markers mid front and back (= 4 sts dec altog). Rep dec every 2nd rnd 3 times = 84 sts. When work measures 9 cm/3.5 in, measured from crotch, work short rows to make back higher: Beg from back, K21, turn, P42, turn, K35, turn, and P28. Cont working back and forth with 7 sts less each time until there is 7 sts rem before mid marker. Work 2 rnds in St st over all sts. Work 6 rnd in K1,P1 rib. Bind off in rib.

Finishing

Sew crotch seam, and lower edge seams of the legs.

Twist a cord with light pink yarn, and thread through purl-sts approx. mid rib. Tie mid front.

Weave in all ends on WS.

HAT

Using needles size 3 mm and pink yarn, cast on 57 sts. Work back and forth 2 rows in Garter st. Change to light pink yarn, and purl 1 row (= WS). Cont working in patt I as charted + 3 rows in St st. Change to pink yarn, and work 2 rows in Garter st. Change to light pink, and cont working in St st until work measures 9 cm/3.5 in. Bind off 22 sts at each edge. Cont working in St st over rem 13 mid sts until work measures 8 cm/3.1 in, and bind off same time 3x1 st at each edge every 3 cm = 7 sts rem. Bind off.

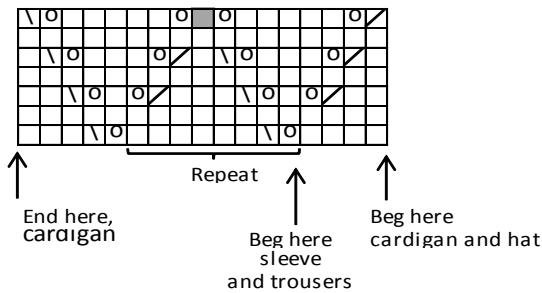
Sew mid part tog with sides.

Using needles size 3 mm and light pink yarn, pick or knit up approx. 48 sts along lower edge of the hat. Work back and forth 4 rows in Garter st. Bind off.

Ruffled edge (worked to pink Garter st edge after patt I).

Beg from RS, using needles size 3 mm and pink yarn, pick or knit up 1 st from each st. Knit 1 row. Work in Garter st, and inc 1 st to each st across the row. Cont working back and forth in Garter st until edge measures approx. 1 ½ cm/0.6 in. Bind off rather loosely. Twist a cord with pink yarn, and thread into lower edge Garter st row. Weave in all ends on WS.

PATTERN I



- = knit on RS, purl on WS
- ◻ = 1 yo
- ▤ = K2togtbl
- ▥ = K2tog
- = sl 1 st, K2tog, pss0

Viking Merino Soft

Sleeping bag

1405-3

Size: Babyborn - 42 cm
Babyborn - 16.5 in

Chest: 46 cm

18.1 in

Length: 40 cm

15.7 in

Sleeve length: 8 cm
3.1 in

ALTERNATIVE YARNS: Viking Merino Soft (100% Merino Wool-Superwash) Viking Baby ull (100% merino wool), Viking pure milk fiber (100% milk fiber), Viking Alpaca Fine (85% Superfine Alpaca, 15% Highland wool), 50 g ball

Pink, 765 : 2 balls

White, 702 : 1 ball

Circular needle and double pointed needles size 2 ½ and 3 mm – US 1or 2 and 2 or 3 – UK/Canadian 13 or 12 and 11 + 3 buttons

Gauge: 28 sts = approx. 10 cm/4 in over St st using needles size 3 mm. **Check your gauge to ensure success.**

When working in a patt with 2 clrs, it's important to maintain the order of yarns over your finger. Always hold the darker clr in front throughout the whole project.

Using needles size 3 mm and pink yarn, cast on 128 sts. Work in patt A. Place markers each side, with 65 sts for front, and 63 sts for back. When patt A is ready, cont working in St st with pink yarn. Bind off on 4th rnd 7 sts mid front. Cast on 4 sts on next rnd over the bound-off sts. Purl these new sts every rnd (= to be cut open later on, not incl in the number of sts). There is now 121 sts on a rnd. Place markers each side, 29 sts for both fronts, and 63 sts for back. When work measures approx. 30 cm/11.8 in, work in patt B. Bind off.

Sleeves: Using needles size 2½ mm and pink yarn, cast on 32 sts. Work 5 rnds in K1,P1 rib. Change to needles size 3 mm. Work 1 rnd in St st, and inc evenly across number of sts to be 39 sts. Place a marker beg of rnd. Work in patt C, and inc 1 st both sides of the marker approx. every 1 cm/0.4 in. When patt C is ready, cont working in St st with pink yarn until there is 49 sts on a rnd, and sleeve measures approx. 8 cm/3.1 in. Turn work inside out, and work 5 rnds in St st for seam allowance.

Finishing: Dampen pieces slightly from WS. Sew 2 dense zigzag seams around armholes and mid front. Cut open between seams. Sew normal zigzag over cut edges. Join shoulder seams, 20 sts for each shoulder.

Right front band: Using needles size 2½ mm and pink yarn, cast on 13 sts. Work K1,P1 rib over first 8 sts, and St st over last 5 sts for seam allowance. When front band measures approx. 10 cm/4 in, bind off 5 seam allowance sts, and leave rem 8 sts on holder.

Left front band: Work same as for right front band, but in reverse. When front band measures approx. 3 cm/1.2 in, make a buttonhole over 3 sts. Make buttonhole 3 sts inside front edge: Bind off 3 sts. Next row: Cast on 3 sts over the bound-off ones. Make another buttonhole after approx. 6½ cm/2.6 in, and 3rd one on last row before neck band.

Neck band: Sew a curving marker thread for neck edge, approx. 5 cm/2 in below upper edge. Using needles size 2½ mm and pink yarn, pick or knit up sts for neck band: Beg from RS from right front band. Slip sts from holder over needle, pick up approx. 20 sts along the marked line, 23 sts from back, 20 sts along the marked line on left front, and slip sts from holder on needle = approx. 79 sts on a row. Work back and forth in K1,P1 rib. When neck band measures 1½ cm/0.6 in, bind off at each edge 8 sts in rib. Cont working in rem sts until neck band measures approx. 3 cm/1.2 in. Bind off in rib.

Sew 2 dense zigzag seams along the inner side of neck edge. Cut off all extras. Sew normal zigzag over cut edges.

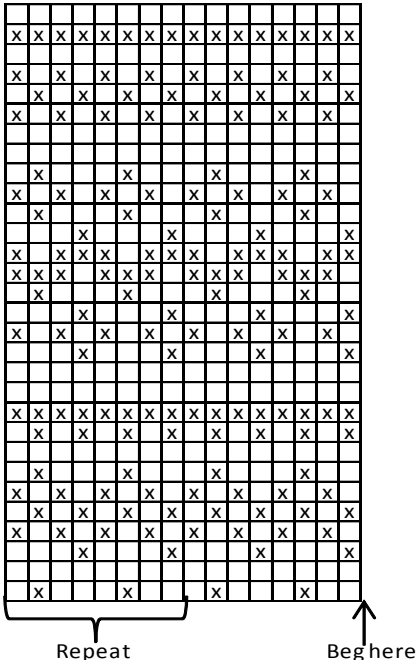
Finishing: Sew on front bands. Sew seam allowances over cut edges. Fold neck band in double over cut edge, and sew on WS. Sew on sleeves. Sew seam allowances over cut edges. Sew on buttons. Weave in all ends on WS.

HAT

Using needles size 2½ mm and pink yarn, cast on 92 sts. Work 7 rnds in K1,P1 rib. Change to needles size 3 mm. Work in patt D, and inc evenly across first rnd number of sts to be 96 sts. When patt D is ready, cont working in St st with pink yarn until hat measures approx. 10 cm/4 in. Dec for crown: Knit all sts tog in pairs. Knit 1 rnd. Rep dec every 2nd rnd until 12 sts rem. Break yarn, and thread through rem sts.

Sew a small white pompom on top of the hat.

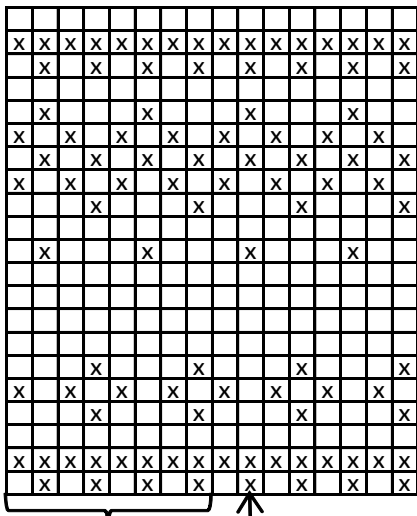
Pattern B



Repeat

Beg here

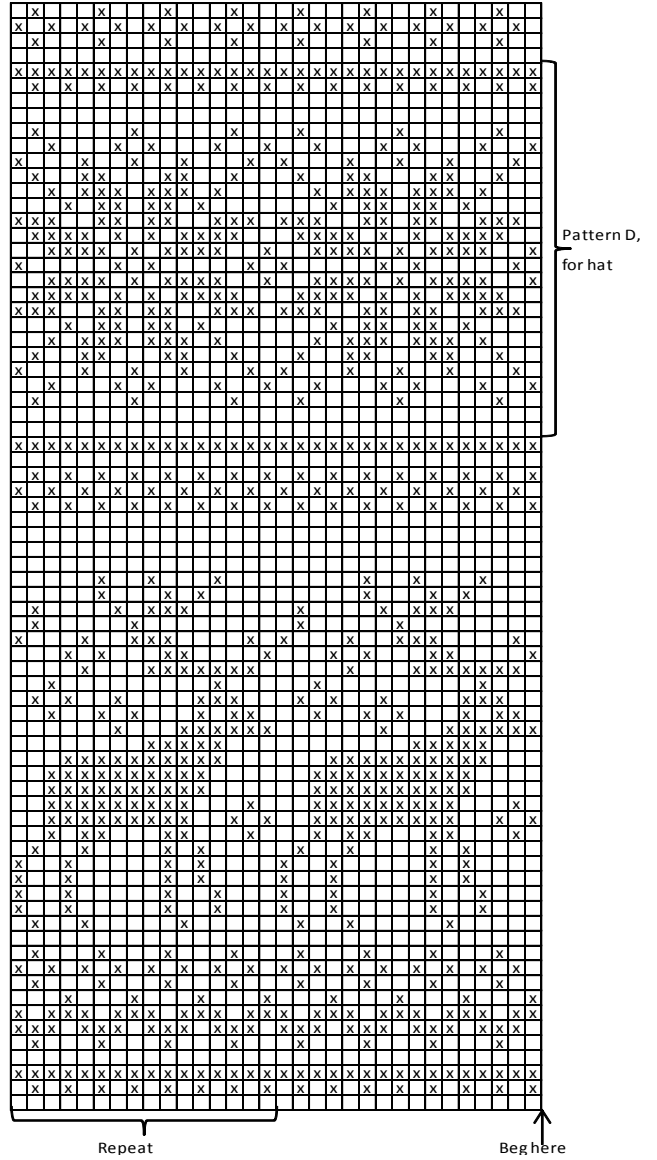
Pattern C



Repeat

Mid sleeve

Pattern A



Pattern D,
for hat

Repeat

Beg here

- = Pink
- = White

Viking Baby Ull

Cardigan, pants, socks and hat 1405-4

Size: BabyBorn – 42 cm
BabyBorn – 16.5 in

CARDIGAN

Chest: approx. 36 cm
14.2 in

Length: approx. 16 cm
6.3 in

Sleeve length: approx. 10 cm
4 in

PANTS

Waist: approx. 32 cm
12.6 in

Leg length: approx. 10 cm
4 in

ALTERNATIVE YARNS: Viking Baby Ull (100% merino wool, superwash), Viking Milk fiber (100% milk fiber), 50 g ball

CARDIGAN AND HAT

Light Blue, 720 2 balls

White, 700 1 ball

PANTS AND SOCKS

Light Blue, 720 1 ball

White, 700 rem from cardigan

Double pointed needles and circular needle size 2½ and 3 mm - US 1 or 2 and 2 or 3 - UK/Canadian 13 or 12 and 11

+ 4 buttons for cardigan

+ 2 buttons for trousers

Gauge: 28 sts = approx. 10 cm/4 in over St st using needles size 3 mm. **Check your gauge to ensure success.**

CARDIGAN

Using needles size 2½ mm and light blue yarn, cast on 113 sts. Work back and forth 3 cm/1.2 in in K1,P1 rib. But when rib measures 1½ cm/0.6 in, make one buttonhole at left edge, inside 3 sts. Buttonhole: Bind off 2 sts. Next row: Cast on 2 sts over the bound-off ones. Slip first and last 8 sts on holder (= sts for front bands) = 97 sts rem on a row. Change to needles size 3 mm. Work 2 rows in St st. Place markers at each side, 51 sts for back, and 23 sts for both fronts. Cont working back and forth in patt I as charted. When patt is ready, cont working in St st with light blue yarn until work measures approx. 8 cm/3.1 in. Finish each side separately.

Back

Cont working back and forth in St st. When work measures approx. 9 cm/3.5 in, work in patt II as charted (check from mid st where to beg patt). When patt II is ready, cont working in St st with light blue yarn until work measures 16 cm/6.3 in, and armhole measures 8 cm/3.1 in. Bind off rather loosely.

Right front

Work same as for back. When work measures 3 cm/1.2 in less than total length, bind off for neck edge every 2nd row 1x7 sts, 1x3 sts, 1x2 sts, and 1x1 st. When front measures same as back, bind off rather loosely.

Work same for left front, rev all shaping.

Sleeves

Using dpn size 2½ mm and light blue yarn, cast on 28 sts. Work in rnds 3 cm/1.2 in K1,P1 rib. Change to needles size 3 mm. Knit 1 rnd, and inc evenly across number of sts to be 35 sts. Work 2 rnds in St st with light blue yarn, and after that cont in patt I as charted (check from mid st where to beg patt). When patt I is ready, cont working in St st with light blue yarn. Place a marker mid under sleeve. Inc 1 st both sides of the marker approx. every 1½ cm/0.6 in until there is 45 sts on a rnd. When sleeve measures 10 cm/4 in, bind off. Work same for the other sleeve.

Finishing

Join shoulder seams.

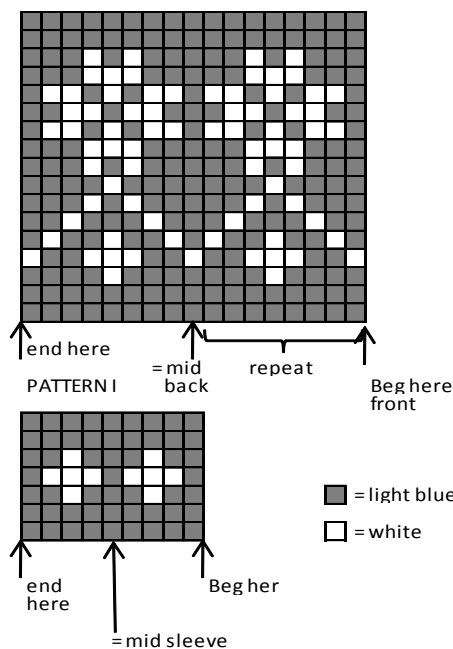
Right front band: Slip 8 sts from holder on needles size 2½ mm. Cont working back and forth in rib until front band reaches neck edge (don't stretch when measuring the band). Leave work aside, and work same **left front band**, but make 2 buttonholes evenly spaced apart (Note! Make last buttonhole on neck band). Sew on front bands to front edges.

Neck band: Slip sts from both front bands on short circular needle size 2½ mm, and pick or knit up with light

blue yarn approx. 57 sts. Work 6 rows in K1,P1 rib, and make last buttonhole after 2 rows at left edge. Bind off in rib.

Sew on sleeves. Weave in all ends on WS. Sew on 4 buttons.

PATTERN II



PANTS

Beg from upper edge of front: Using needles size 3 mm and light blue yarn, cast on 21 sts. Work back and forth 2 rows in K1,P1 rib. Make buttonholes 3 sts inside each edge on next row. Buttonhole: Bind off 2 sts. Next row: Cast on 2 sts over the bound-off ones. Work altog. 6 rows in rib. Cont working in rib over first and last 5 sts, and in St st over rem sts. Inc 1 st at each edge inside 5 rib sts. Rep inc every 2nd row until there is 37 sts on a row. Leave work aside, and work same for back, but without buttonholes. Slip both pieces on same circular needle, and cast on 9 sts between each piece = mid under arms. There is now 92 sts on a rnd. Work 1 cm/0.4 in St st (Note! Work 2 rnds in rib over the new sts). Work 4 cm/1.6 in in K1,P1 rib. Next rnd: Inc evenly across 8 sts = altog. 100 sts on a rnd. Place markers at each side, 51 sts for front, and 49 sts for back + 1 marker mid front and 1 marker mid back. Work short rows for back: Beg from marker mid back, K7, turn. P13, turn. Cont working in the same way, working 6 sts more each time, 3 more times at each side. Work 1 rnd in St st over all sts. Cont working in rnds in St st until work measures approx. 6 cm/2.4 in, measured from the cast-on sts (after rib), or desired length before inc for crotch. Inc 1 st both sides of markers mid front and back. Rep inc every 2nd rnd altog. 5 times = 20 inc sts. Next rnd: Bind off 10 sts mid front and back. Finish each leg separately (= 50 sts). Work in rnds in St st until leg measures approx. 5 cm/2 in. Work in patt I as charted. When patt I is ready, cont working I St st with light blue yarn until leg measures 7 cm/2.8 in. Next rnd: Dec evenly across number of sts to be 40 sts. Work in rnds 3 cm/1.2 in in K1,P1 rib. Bind off. Work same for the other leg.

Finishing

Sew crotch seam.

Straps: Using needles size 2½ mm and light blue yarn, cast on 7 sts. Work approx. 4 cm/1.6 in in K1,P1 rib. Bind off. Work same for the other strap. Sew straps on back (on WS of rib). Sew on buttons on RS of each strap.

SOCKS

Using needles size 2½ mm and light blue yarn, cast on 30 sts. Work in rnds 5 cm/2 in in K1,P1 rib. Change to dpn size 3 mm. Work for heel over 15 mid back sts: Work until 1 st rem at one side, turn, and work until 1 st rem on the other side. Turn, and work 1 st less each time until 5 mid sts rem. Turn, and work 1 st more each time. In order to avoid holes in the work, pick up the strand between last st and next st, slip strand tbl on needle and ktog with next st. Rep until all 15 sts are returned back to work, cont working in St st over all sts. Work until foot measures 4 cm/1.6 in, or as desired before dec. Beg dec: K2tog beg of each dpn on each rnd until 10 sts rem. Break yarn, thread through rem sts, and weave in on WS.

Weave in all ends on WS. Work same for the other sock.

HAT

Beg from one earflap. Using needles size 3 mm and light grey yarn, cast on 3 sts. Work back and forth in K1,P1 rib. Inc 1 st beg of each row until there is 19 sts on a row = 1 earflap. Work same for the other earflap. Slip both earflaps on same short circular needle. Cast on 37 sts between earflaps (= front), and 15 sts mid back (= between earflaps) = 90 sts. Cont working in rnds in K1,P1 rib until hat measures 10 cm/4 in (measured mid front). Dec for crown: Knit all sts to in pairs. Knit 2 rnds, and rep dec 2 times more. Break yarn, thread through rem sts, tighten the yarn, and weave in on WS. Twist 2 cords (approx. 20 cm/7.9 in long), and fasten to each earflap. Weave in all ends on WS.

Viking Merino Soft

Blanket

1405-5

Size:

30 x 44 cm

11.8x17.3 in

ALTERNATIVE YARNS: Viking Merino Soft (100% Merino Wool-Superwash) Viking Baby ull (100% merino wool), Viking pure milk fiber (100% milk fiber), Viking Alpaca Fine (85% Superfine Alpaca, 15% Highland wool), 50 g ball

Blue, 727 : 2 balls
White, 700 : 1 ball

Circular needle and double pointed needles size 2 ½ and 3 mm – US 1 or 2 and 2 or 3 – UK/Canadian 13 or 12 and 11
Gauge: 28 sts = approx. 10 cm/4 in over St st using needles size 3 mm. **Check your gauge to ensure success.**

When working in patt with 2 clr, it's important to maintain the order of yarns over your finger. Always hold the darker clr in front throughout the whole project.

Using needles size 2½ mm and blue yarn, cast on 97 sts. Work back and forth approx. 2 cm/0.8 in K1,P1 rib. Slip first and last 8 sts on holders (= sts for side bands). Change to needles size 3 mm. Cast on 4 new sts to the end of the row. Purl these new sts every rnd (= to be cut open later on, not incl in the number of sts). Cont working in rnds in patt A, and then in patt B until work measures approx. 30 cm/11.8 in (end with 4 rnds in blue). Work in patt C, and after that cont working in St st with blue yarn, until work measures approx. 42 cm/16.5 in (end with 4 rnds in blue). Knit side bands. Slip 8 sts from holder on needles size 2½ mm. Cast on 5 new sts with blue yarn at the edge facing the blanket (= seam allowance). Work in St st over seam allowance sts. Work K1,P1 over rem sts. When band measures approx. 41 cm/16.1 in (side band must not be too long), bind off seam allowance sts, and slip rem sts on holder. Work same for the other side band.

Finishing: Dampen the blanket slightly from WS. Sew 2 dense zigzag seams over the purl sts in middle. Cut open between seams. Sew normal zigzag over cut edges. Sew on side bands. Sew seam allowances over cut edges. Slip sts from holder over needles size 2½ and cont working in K1,P1 rib with blue yarn over all sts until rib measures approx. 2 cm/0.8 in. Bind off in rib.

merino wool), Viking pure milk fiber (100% milk fiber), Viking Alpaca Fine (85% Superfine Alpaca, 15% Highland wool), 50 g ball

White, 700

2 balls

Short circular needle (30 cm/11.8 in) size 3mm – US 2 or 3 – UK/Canadian 11, and crochet hook size 2 ½ mm – US B/1 or C/2 – UK/Canadian 12

+ elastic for pants

Gauge: 28 sts = approx. 10 cm/4 in over St st using needles size 3 mm. **Check your gauge to ensure success.**

CARDIGAN

Using needles size 3 mm, cast on 97 sts. Work back and forth in patt as foll:

1st row: K1, P1, rep across the row.

2nd row : Knit all sts (= WS).

Rep these 2 rows throughout the whole project. **Same time**, inc 1 st at each edge every 2nd row 5 times = 107 sts.

Cont working until work measures 8 cm/3.1 in. Place markers each side, 27 sts for both fronts, and 53 sts for back. Finish back and fronts separately.

Back

Cont working until work measures 17 cm/ in. Bind off.

Right front

Cont working same as before, but when work measures 13 cm/5.1 in, bind off first 7 sts for neck edge. Bind off at neck edge every 2nd rnd 2x2 sts, and 1x1 st = 15 sts rem for shoulder. When front measures same as back, bind off.

Left front

Work same as for right front, rev all shaping.

Sleeves

Using needles size 3 mm, cast on 33 sts. Work back and forth in patt same as for body, but **inc same time** 1 st at each edge every 6th row (1½ cm/0.6 in). When work measures 10 cm/4 in, and there is 45 sts on a row, bind off.

Finishing

Join shoulder seams. Sew sleeve seams.

Sew on sleeves.

Picot edge

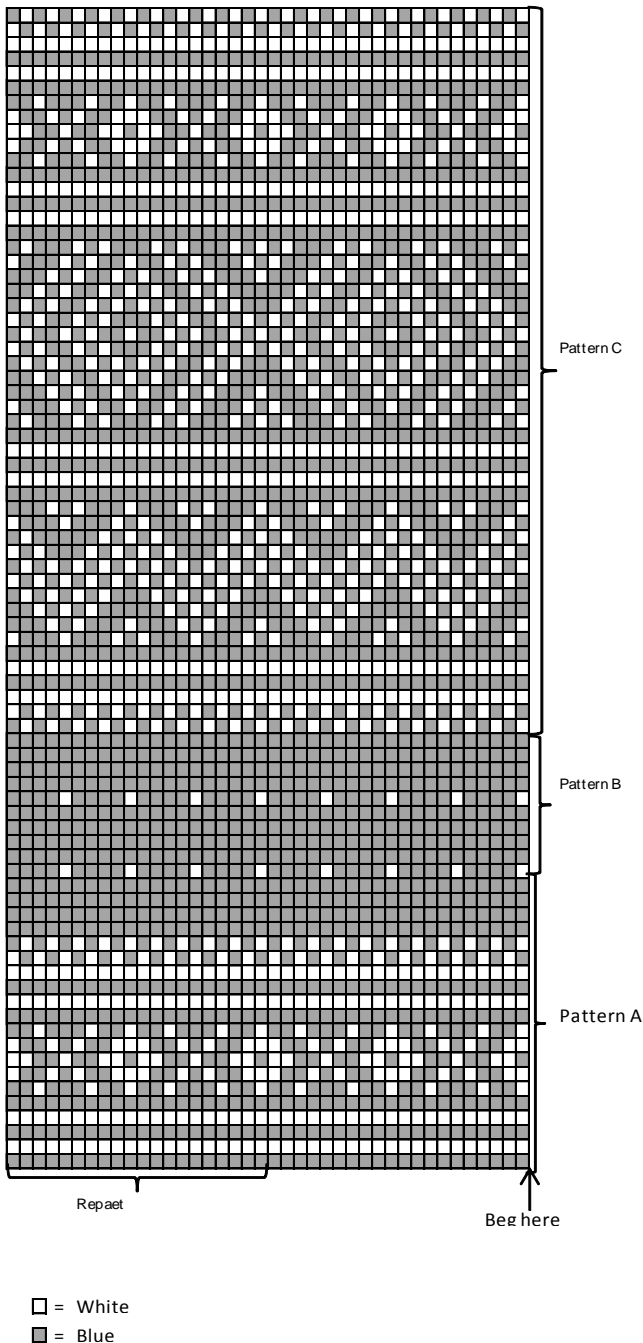
Using crochet hook size 2½ mm and white yarn, crochet a picot edge as foll: Beg from one side: *Ch3 – insert hook to first ch-st, 1 dc – skip approx. 1 cm/0.4 in, and insert hook to next st, 1 dc*, rep *-* across all edges, and to the lower edges of sleeves.

Weave in all ends on WS.

Sew on 3 buttons, and use picot edge loops as buttonholes.

PANTS

Beg from waist. Using needles size 3 mm, cast on 92 sts. Work in rnds in K1,P1 rib. After 2 rnds, make an eyelet rnd = K2tog, 1 yo, rep across the rnd. Work 2 rnds in rib. Place markers between 2 sts at each side, and mid front and back = 23 sts for each part. Work short rows for back. Beg from marker mid back. K8, turn, P16. Turn, K24, turn, P32. Turn, K40, turn, and purl until left side marker. Cont working in rnds in St st over all sts. When work measures approx. 9 cm/3.5 in (measured mid front), inc 1 st both sides mid front and back markers every 2nd rnd altog. 3 times = 104 sts.



□ = White
■ = Blue

Viking Merino Soft

Cardigan, pants, socks and hat 1405-6

Size: Babyborn – 42 cm

Babyborn – 16.5 in

Chest: 38 cm

15 in

Length: 16 cm

6.3 in

Sleeve length: 10 cm

4 in

Leg length: 10 cm

4 in

ALTERNATIVE YARN: Viking Merino Soft (100% Merino Wool-Superwash), Viking Baby ull (100 %

Work each leg separately (leg is measured from here). Using 5 dpn, knit sts from mid front marker until mid back marker = 52 sts for each leg. Cont working in rnds in St st, and **bind off** first and last 3 sts on first rnd (= 6 sts for crotch). Place a marker for the inner seam of the leg (between sts). Dec 1 st both sides of the marker approx. every 1½ cm/0.6 in altog 5 times = 36 sts rem. When leg measures approx. 7 cm/2.8 in, work in patt as foll:
 1st rnd: K1, P1, rep across the rnd.
 2nd rnd: Purl all sts.
 Rep these 2 rnds until leg measures approx. 10 cm/4 in. Bind off.

Work same for the other leg over rem sts. Crochet a picot edge, same as for cardigan, on lower edges of the legs. Weave in all ends on WS. Thread elastic through the eyelet rnd.

HAT

Using a short circular needle size 3 mm, cast on 80 sts. Work in rnds in patt as foll:
 1st rnd: K1, P1, rep across the rnd.
 2nd rnd: Purl all sts.
 Rep 1st and 2nd rnds until work measures 3 cm/1.2 in. Make an eyelet rnd = K2tog, 1 yo, rep across the rnd. Purl 1 rnd. Cont working in rnds in St st until work measures 10 cm/4 in. Dec for crown: *K8, K2tog*, rep *-* across the rnd. Knit 1 rnd without dec. Rep dec every 2nd rnd with 1 st less between each dec until 16 sts rem. Knit all sts tog in pairs. Break yarn, thread through rem sts. Crochet a loop with ch11, and fasten it on top of the hat. Crochet a picot edge (same as for cardigan) across the lower edge. Twist a cord (approx. 58 cm/22.8 in long), and thread it through eyelet rnd. Tie into a bow. Weave in all ends on WS.

SOCKS: SEE 1405-11

Viking Merino Soft

Diaper undies, sweater, and hat **1405-7**

Size: BabyBorn – 42 cm
BabyBorn - 16.5 in

SWEATER:

Chest: 34 cm
 13.4 in
Length: 18 cm
 7.1 in
Sleeve length: 10 cm
 4 in

DIAPER UNDIES:

Hips: 35 cm
 13.8 in

ALTERNATIVE YARNS: Viking Baby Ull (100% superwash merino ull), Viking pure milk fiber (100% milk fiber) 50 g ball

DIAPER UNDIES

White,700 1 ball

SWEATER

White, 700 1 ball

HAT

White, 700 1 ball

Double pointed needles and circular needle size 2 ½ and 3 mm – US 1 or 2 and 2 or 3 – UK/Canadian 13 or 12 and 11 + 1 button for sweater + elastic for diaper undies
Gauge: 28 sts = approx. 10 cm/4 in over St st using needles size 3 mm. **Check your gauge to ensure success.**

SWEATER

Using needles size 3 mm, cast on 48 sts. Work back and forth in Garter st until work measures approx. 10 cm/4 in. Cast on 28 sts at each edge = 104 sts (= sleeves). Cont working in Garter st until work measures 16 cm/6.3 in. Bind off 16 mid sts for neck edge. Finish each side separately. Bind off at neck edge every 2nd row 1x3sts, 1x2 sts, and 1x1 st = 38 sts rem. Cont working until work measures 18 cm/7.1 in (= top of shoulder). Leave work aside, and finish the other side (rev all shaping). Slip sts on same needle, and cast on 28 sts between the existing sts (neck edge for back). Cont working over all sts until work measures 8 cm/3.1 in, measured from cast-on sts for neck edge. Bind off 28 sts at each edge (= sleeves). Cont working in Garter st over rem 48 mid sts until work measures 10 cm/4 in, measured from the bound-of sleeve sts. Bind off.

Sew side seams, and sleeve seams.

Neck band: Beg mid back, using needles size 3 mm, pick up approx. 74 sts around neck edge. Work back and forth approx. 2 cm/0.8 in in Garter st. Bind off rather loosely. Crochet a buttonhole loop with ch5 mid back, and fasten it with 1 sl st. Sew on a button to the other edge of the neck band. Weave in all ends on WS.

HAT

Size: BabyBorn
Circumference: 33 cm
 in

Using a short circular needle size 2½ mm, cast on 91 sts. Work 7 rnds in Garter st. Change to needles size 3 mm. Cont working in rnds in St st, and inc and dec as foll: *K1, M1, K13 – sl 1, K2tog, pssso – K13 – M1 – K1 – M1 – K13 – sl 1, K2tog, pssso – K13 – M1 – K1 – M1 – K13 – sl 1, K2tog, pssso – K13 – M1 – K1*, rep *-* every 2nd rnd 5 times more. After that, rep only decreases every 2nd rnd until 7 sts rem. Break yarn, and thread through rem sts. Weave in all ends on WS. Twist 2 cords, and sew them on each side (or use silk ribbon).

DIAPER UNDIES (triangle shape)

Using a short circular needle size 2½ mm, cast on 92 sts. Work in rnds in K2,P2 rib. When work measures approx. 4 cm/1.6 in, make an eyelet row: K2tog, 1 yo, rep across the row. Cont working in rib until work measures approx. 8 cm/3.1 in. Divide work in mid front, between 2 knit-sts or 2 purl-sts. Cont working back and forth in St st or Garter st. Dec same time 1 st at the end of each stick until 4 sts rem. Bind off. Fold the tip of the triangle and sew to mid front. Sew also short seams on each side of the triangle,

leaving approx. 8 cm/3.1 in openings for legs. Twist a cord, and thread it through the eyelet rnd.

Viking Merino Soft

Blanket

1405-8

Size: 30x40 cm
11.8x15.7 in

ALTERNATIVE YARNS: Viking Baby Ull (100% merino wool), Viking pure MILK fiber (100% milk fiber), 50 g ball

White, 700

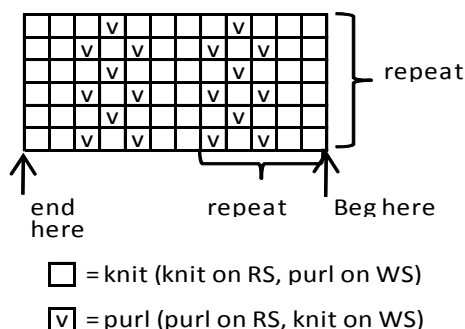
2 balls

Circular needle size 3 mm – US 2 or 3 – UK/Canadian 11

Gauge: 28 sts = approx. 10 cm/4 in over St st using needles size 3 mm. **Check your gauge to ensure success.**

BLANKET

Using needles size 3 mm, cast on 83 sts. Work in patt as charted: Garter st over 8 sts, patt over next 67 sts, and Garter st over 8 sts. Cont working back and forth as established until work measures approx. 40 cm/15.7 in. Bind off.



Viking Merino Soft

Dress

1405-9

Size: Babyborn – 42 cm
Babyborn – 16.5 in

Chest: 36 cm

14.2 in

Length: 21cm

8.3 in

Sleeve length: 10 cm

4 in

ALTERNATIVE YARNS: Viking Merino Soft (100% Merino Wool-Superwash) Viking Baby ull (100% merino wool), Viking pure milk fiber (100% milk fiber), Viking Alpaca Fine (85% Superfine Alpaca, 15% Highland wool), 50 g ball

White, 700

2 balls

Short circular needle size 3 mm – US 2 or 3 – UK/Canadian 11

Gauge: 28 sts = approx. 10 cm/4 in over St st using needles size 3 mm. **Check your gauge to ensure success.**

Using needles size 3 mm, cast on 165 sts. Work 2 rnds in Garter st. Cont working in patt I as charted. Cont working after patt reports in K13 and P2. **Dec same time** 1 st (= K2tog) both sides of each knit-panel, rep dec approx. every 2½ cm/1 in 3 times = 99 sts rem. When work measures approx. 11 cm/ in, place markers each side, 49 sts for front, and 50 sts for back. Knit 1 rnd, and bind off 8 sts mid back (= buttonband, worked later on). Work 3 cm/1.2 in back and forth in St st. Bind off 8 sts at each side for armholes (4 sts both sides of the markers). Finish back and front separately.

Back, left side:

Cont working back and forth in St st. Bind off at armhole edge every 2nd row 2x1 st. When work measures approx. 21 cm/8.3 in, and armhole measures approx. 7 cm/2.8 in, bind off.

Back, right side:

Work same as for left side, rev all shaping.

Front:

Cont working back and forth in St st, and work same as for back. When armhole measures 5 cm/2 in, bind off 11 mid sts for neck edge. Finish each side separately.

Right front:

Cont working in St st. Bind off at neck edge every 2nd row 3x1 st. When front measures same as back, bind off.

Left front:

Work same as for right front, rev all shaping.

Sleeves

Using needles size 3 mm, cast on 30 sts. Work back and forth 4 rows in Garter st. Cont working in patt I as charted. When patt I is ready, work same as for body. Inc 1 st at each edge approx. every 2 cm/0.8 in until there is 41 sts on a row, and sleeve measures approx. 10 cm/4 in. Bind off at each edge 4 sts. Cont working back and forth same as before, and bind off at each edge every 2nd row 2x1 st. Bind off.

Finishing

Join shoulder seams.

Neck band: Using needles size 3 mm, pick or knit up approx. 40 sts around neck edge. Work back and forth 6 rows in Garter st. Bind off.

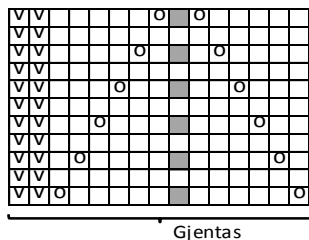
Buttonband (left side): Pick or knit up approx. 20 sts along left edge of the split. Work 6 rows in Garter st. Bind off.

Buttonholeband (right side): Work same as for left side, but make 3 buttonholes on 3rd row: beg from neck edge, K2, bind off 2 sts, K3, bind off 2 sts, K3, bind off 2 sts, K6. Next row: Cast on 2 sts over the bound-off sts. Sew sleeve seams. Sew on sleeves.

Sew on buttons.

Weave in all ends on WS.

SOCKS: SEE 1405-11



- = knit on RS, purl on WS
- = 1 vo
- = purl on RS, knit on WS
- = sl 1 st, K2tog, pss0

Viking Baby Ull

Cardigan, hat and pants 1405-10

Size: **BabyBorn – 42 cm**
BabyBorn – 16.5 in

Chest: approx.	36 cm 14.2 in
Length: approx..	17 cm 6.7 in
Sleeve length: approx.	10 cm 4 in
Leg length: approx.	10cm 4 in

ALTERNATIVE YARNS: Viking Baby Ull (100% merino ull), Viking pure MILK fiber (100% milk fiber), 50 g ball

CARDIGAN AND HAT

Violet, 769: 2 ball
Light Violet, 767: 1 ball

PANTS

Violet, 769: 1 ball
Light Violet, 767: Use rem from cardigan
Circular needle and double pointed needles size 3 mm -
US 2 or 3 – UK/Canadian 11
+ 3 small buttons for cardigan
+ 2 small buttons for pants

Gauge: 28 sts = approx. 10 cm/4 in over St st using needles size 3 mm. **Check your gauge to ensure success.**

CARDIGAN

Using needles size 3 mm and light violet yarn, cast on 97 sts. Work 2 rows in Garter st. Change to dark violet, and work 4 rows in K1,P1 rib. Change to light violet, and work 2 rows in Garter st. Cont working back and forth with dark violet yarn in patt as charted. Rep patt until work measures approx. 10 cm/4 in. Place markers at each side, 51 sts for back, and 23 sts for both fronts. Finish back and fronts separately.

Back

Cont working back and forth in patt. When work measures approx. 17 cm/6.7 in, and armhole measures approx. 7 cm/2.4 in, bind off.

Front

Work same as for back. When work measures approx. 15

cm/5.9 in, bind off for neck edge every 2nd rnd 1x7 sts, 1x3 sts, 1x2 sts, and 1x1 st = 10 sts rem for shoulder. When front measures same as back, bind off. Work same for the other side, rev all shaping.

Sleeves

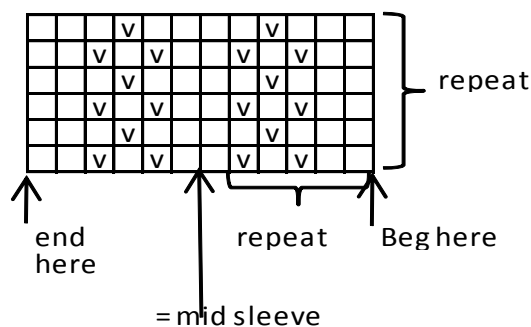
Using needles size 3 mm, cast on 30 sts. Work for border same as for body. Place a marker beg of rnd. Cont working in rnds in patt as charted (check from mid st where to beg). Inc 1 st both sides of the marker approx. every 1½ cm/0.6 until there is altog. 40 sts on a rnd (work in patt over inc sts). When sleeve measures approx. 10 cm/4 in, bind off. Work same for the other sleeve.

Finishing

Join shoulder seams.

Front bands: Using needles size 3 mm and light violet yarn, pick or knit up approx. 44 sts along left front. Knit 1 row = 1 rill. Work 2 rows in Garter st. Bind off. Place markers for 3 buttons. One at neck edge, and rest approx. 2½ cm/1 in spaced apart. Work same for right front band, but make buttonholes on first row. Buttonhole: Bind off 2 sts. Next row: Cast on 2 sts over the bound-off sts.

Neck band: Using needles size 3 mm and light violet yarn, pick or knit up approx. 60 sts around neck edge, also from front bands. Work same as for front bands. Bind off. Weave in all ends on WS. Sew on sleeves. Sew on buttons.



= knit (knit on RS, purl on WS)

= purl (purl on RS, knit on WS)

HAT

Beg from one earflap. Using needles size 3 mm and dark violet yarn, cast on 5 sts. Work Garter st over first and last 2 sts, and St st over rem sts. Cont working back and forth, and inc 1 st at each edge inside 2 sts. Rep inc every 2nd row until there is 17 sts on a row. Leave work aside, and work same for the other earflap.

Slip both earflaps on same circular needle, and cont working in rnds as foll: Knit sts from one earflap – cast on 37 sts = mid front – knit sts from the other earflap – cast on 15 sts = mid back = 86 sts on a rnd. Change to light violet yarn. Work 2 rnds in Garter st. Change to dark violet yarn, and work 4 rnds in K1,P1 rib. Change to light violet yarn, and work 2 rnds in Garter st. Change to dark violet yarn, and cont working in rnds in St st. Inc across first rnd 2 sts = 88 sts. Cont working until work measures approx. 10 m/4 in, measured mid front (or desired length). Dec for crown: *K6, K2tog*, rep *-* across the rnd. Knit 1rnd without dec. Rep dec every 2nd rnd with 1 st less between dec until 22 sts rem. Knit all sts tog in pairs until 11 sts

rem. Break yarn, thread through rem sts, tighten the yarn, and weave in on WS. Twist 2 cords, approx. 20 cm/7.9 in long, and fasten them on earflaps.

PANTS

Begin from upper edge of the front: Using needles size 3 mm and dark violet yarn, cast on 21 sts. Work back and forth 2 rows in K1,P1 rib. Make buttonholes 3 sts inside each edge on next row. Buttonhole: Bind off 2 sts. Next row: Cast on 2 sts over the bound-off sts. Work altog. 6 rows in rib. Cont working in rib over first and last 5 sts, and St st over rem sts. Inc 1 st at each edge inside 5 rib sts. Rep inc every 2nd row until there is 37 sts on a row. Leave work aside, and work same for back, but without buttonholes. Slip both pieces on same circular needle, and cast on 9 sts between each piece = mid under arms. There is now 92 sts on a rnd. Work 1 cm/ in St st (**Note!** Work 2 rnds in rib over the new sts). Change to light violet yarn, and work 4 rnds in light violet yarn. Change to dark violet yarn, and work 6 rnds in K1,P1 rib. Change to light violet yarn, and work 4 rnds in Garter st. Change to dark violet yarn, and work 1 rnd in St st. Inc evenly across next rnd 8 sts = altog. 100 sts. Place markers each side, 51 sts for front, and 49 sts for back + 1 marker mid front and 1 marker mid back. Work short rows for back: Beg from marker mid back, K6, turn, P11. Cont working in the same way, work 5 sts more each time, turning altog. 4 times at each side. Work 1 rnd in St st over all sts. Cont working in rnds in St st until work measures approx. 7 cm/2.8 in, measured from the cast-on sts after rib. Inc 1 st both sides of markers mid front and back every 2nd rnd altog. 5 times = 20 inc sts (**Note!** Work St st over inc sts). Next rnd: Bind off 11 sts mid front and back. Work each leg separately (= 49 sts). Inc 1 st at the inner seam of the leg = 50 sts. Cont working in rnds in St st. Place a marker on the inner seam of the leg. Dec 1 st both sides of the marker approx. every 1 cm/ in altog. 5 times = 40 sts. When leg measures approx. 7 cm/2.8 in, change to light violet. Work 4 rnds in Garter st. Change to dark violet yarn, and work 4 rnds in K1,P1 rib. Change to light violet yarn, and work 4 rnds in Garter st. Bind off. Work same for the other leg.

Finishing

Sew crotch seam.

Straps: Using needles size 3 mm, cast on 7 sts. Work approx. 4 cm/1.6 in in K1,P1 rib. Bind off. Work same for the other strap. Sew straps on back (on WS of rib). Sew on buttons on RS of each strap.

Viking Merino Soft Cardigan, hat, socks and pants 1405-11

Size: Babyborn –
42 cm

16.5 in
Chest: Babyborn –
38 cm

15 in
Length: 16 cm

6.3 in
Sleeve length: 10 cm
4 in
Leg length: 10 cm
4 in

ALTERNATIVE YARN: Viking Merino Soft (100% Merino Wool-Superwash) Viking Baby ull (100% merino wool), Viking pure milk fiber (100% milk fiber), Viking Alpaca Fine (85% Superfine Alpaca, 15% Highland wool), 50 g ball

White, 700 : 2 balls
Red, 750 : 1 ball

Circular needle and double pointed needles size 2 ½ and 3 mm – US 1 or 2 and 2 or 3 – UK/Canadian 13 or 12 and 11 + 4 buttons

Gauge: 28 sts = approx. 10 cm/4 in over St st using needles size 3 mm. **Check your gauge to ensure success.**

When working in patt with 2 clr, it's important to maintain the order of yarns over your finger. Always hold the darker clr in front throughout the whole project.

CARDIGAN

Using needles size 2½ mm and white yarn, cast on 113 sts. Work back and forth 5 rnds K1,P1 rib. Slip first and last 8 sts on holders (= sts for front bands). Change to needles size 3 mm. Cast on 4 sts to the end of the row. Purl these new sts every rnd (= to be cut open later on, not included in number of sts). Work in patt A. Place markers each side, 51 sts for back, and 23 sts for both fronts.

Sleeves:

Using needles size 2½ mm and white yarn, cast on 32 sts. Work 5 rnds I K1,P1 rib. Change to needles size 3 mm. Work in patt A. Inc evenly across first rnd number of sts to be 35 sts. Place a marker beg of rnd. Inc 1 st both sides of the marker approx. every 2 cm/0.8 in until there is 45 sts on a rnd, and sleeve measures approx. 10 cm/4 in. Turn work inside out, and work 4 rnds in St st for seam allowance. Bind off.

Finishing: Dampen pieces slightly from WS. Sew 2 dense zigzag seams around armholes and mid front. Cut open between seams. Cut open between seams. Sew normal zigzag seam over cut edges. Join shoulder seams.

Front bands: Slip 8 sts from holder on needles size 3 mm. Cast on 4 sts to the edge facing the body (= seam allowance). Work in St st over the cast-on sts, and rib over rem sts. Cont working until front band measures approx. 5 cm/2 in less than total length (it's important that front band doesn't turn out to be too long). Bind off seam allowance sts, and slip 8 rib sts on holder. Work same for the other front band, and make 4 button holes evenly spaced apart. First one is already made, and the last one will be made on the last row before neck band.

Cutting the neck edge: Sew a curving marker thread for neck edge, approx. 3 cm/1.2 in below the upper edge. Pick or knit up with needles size 2½ mm and white yarn sts along the marked line as foll: Beg from RS, from right front edge. Slip sts from holder over needle, pick up

approx. 12 sts along the marked line, 23 sts from back, 12 sts along the marked line on left front, and slip sts from holder over needle. There is now approx. 63 sts on a row. Work back and forth in K1,P1 rib. When neck band measures 1½ cm/0.6 in, bind off first and last 8 sts in rib. Cont working until neck band measures approx. 3 cm/1.2 in, bind off in rib.

Sew 2 dense zigzag seams along inner side of neck edge. Cut off all extras. Sew normal zigzag over cut edges.

Finishing: Sew on front bands. Sew seam allowances over cut edges. Fold neck band in double, and sew seam allowance over cut edges. Sew on sleeves. Sew seam allowances over cut edges. Sew on buttons. Weave in all ends on WS.

PANTS

Beg from waist. Using needles size 2½ mm and white yarn, cast on 104 sts. Work in K1,P1 rib. Make an eyelet rnd after 2 rnds = K2tog, 1 yo, rep across the rnd. Work 2 rnds in rib. Change to needles size 3 mm, and work in St st. Place markers at each side, 53 sts for back, and 51 sts for front. Place also markers around mid front and back sts. Work short rows for the back. Beg from mid back marker. K9, turn, P17. Turn, K25, turn, P35. Turn, K44, turn, P53. You have now reached left side marker. Cont working in St st and patt B over all sts. When work measures approx. 9 cm/3.5 in (measured mid front), inc 1 st both sides of mid st front and back. Rep inc every 2nd rnd altog. 3 times. There is now 116 sts on a rnd.

Work both legs separately (leg is measured from here). Using 5 dpn, knit sts from marker mid front until marker mid back = 58 sts for each leg. Cont working in rnds in patt C, and **same time** dec 2 sts at the inner seam of leg approx. every 2 cm/0.8 in. When leg measures approx. 8 cm/3.1 in (patt C is ready), work 2 rnds with white yarn, and then in K1,P1 rib until leg measures approx. 10 cm/4 in. Bind off in rib. Work same for the other leg. Thread elastic through eyelet rnd.

HAT

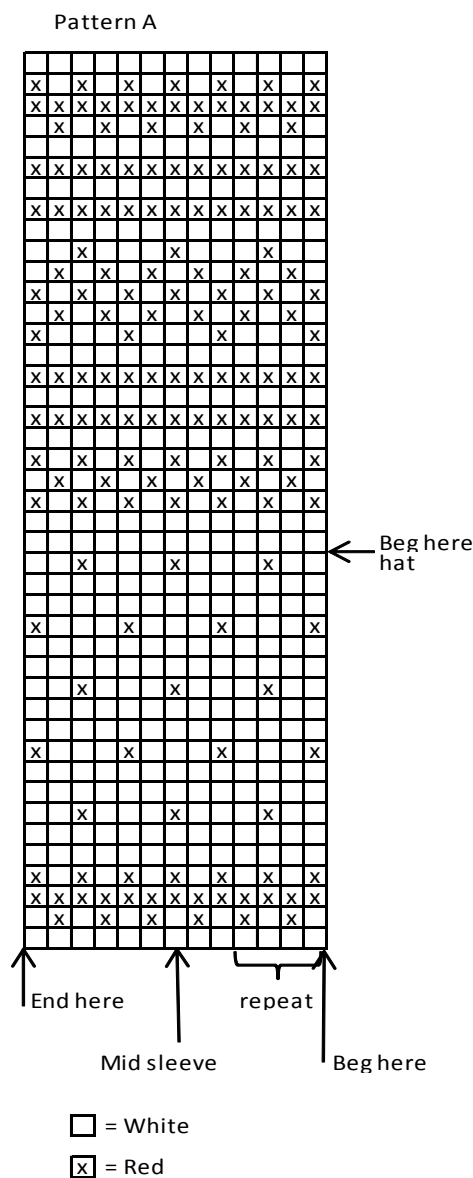
Using needles size 2½ mm and white yarn, cast on 92 sts. Work 4 rnds in K1,P1 rib. Change to needles size 3 mm, and work in St st. Beg from arrow, and work in patt A. When patt A is ready, cont working in St st with white yarn until hat measures approx. 10 cm/4 in. Dec for top: Knit all sts tog in pairs. Knit 1 rnd. Rep dec every 2nd rnd until 12 sts rem. Break yarn, and thread through rem sts.

SOCKS

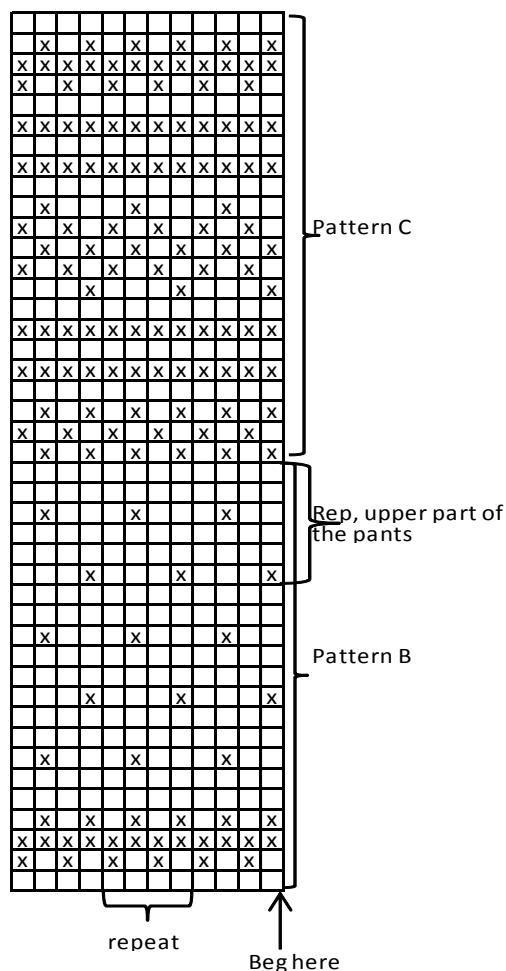
Using needles size 2½ mm and white yarn, cast on 32 sts. Work in rnds approx. 2 cm/0.8 in in K1,P1 rib. Change to needles size 3 mm. Cont working in St st. After 2 rnds, slip front 16 sts over holder, and work for heel over rem 16 sts. Work back and forth approx. 2 cm/0.8 in in St st. K10, turn. Sl 1 st, and P5, turn. Sl first st, and work 1 st more each time until 2 sts rem at each side. Turn, knit all sts. You have now reached left edge of the heel. Pick up approx. 4 sts from both sides of the heel, and work in St st over all sts. **Same time** dec 1 st every rnd both sides of the sts that were left on holder until 28 sts rem. Cont working until sock measures approx. 5 cm/2 in. Beg dec: Place markers each side, same number of sts for each side. Dec 1

st both sides of the markers every rnd until 8 sts rem. Break yarn, thread through rem sts, tighten the yarn, and weave in on WS.

Work same for the other sock.



Pattern for pants



Seed st:

1st rnd: K1, P1

2nd rnd: Knit all purl-sts, and purl all knit-sts.

DRESS

Using needles size 3 mm and red yarn, cast on 100 sts. Work 4 rnds in Seed st. Cont working as foll: *K9, P1*, rep *-* across the rnd. Dec 1 st at each knit panel every 4 cm/1.6 in 2 times = 80 sts. When work measures 18 cm/7.1 in, place markers at each side, 41 sts for front, and 39 sts for back. Bind off 7 mid front sts. Change to grey yarn, and cont working 2 cm/0.8 in back and forth in St st. Divide work at side markers, and finish back and fronts separately.

Back:

Cont working in St st. Bind off at each edge every 2nd row 4x1 st. When armhole measures 6 cm/2.4 in, bind off.

Right front:

Cont working in St st. Bind off at armhole edge every 2nd row 4x1 st. Bind off for neck edge every 2nd row 8x1 sts = 5 sts rem. When front measures same as back, bind off.

Left front:

Work same as for right front, rev all shaping.

Finishing:

Join shoulder seams.

Front bands and neck band:

Beg from right edge of the front split, using needles size 3 mm and red yarn, pick or knit up approx. 58 sts along the split edges and around neck edge. Work back and forth 4 rows of Garter st. Bind off.

Armhole bands:

Using dpn size 3 mm and red yarn, pick or knit up approx. 36 sts. Work 4 rnds in Garter st. Bind off.

SOCKS: SEE 1405-11

Viking Merino Soft

Dress

1405-12

Size: Babyborn – 42 cm

Babyborn -16.5 in

Chest: 29 cm

11.4 in

Length: 26 cm

10.2 in

ALTERNATIVE YARN: Viking Merino Soft (100% Merino Wool-Superwash) Viking Baby ull (100 % merino wool), Viking pure milk fiber (100% milk fiber), Viking Alpaca Fine (85% Superfine Alpaca, 15% Highland wool), 50 g ball

Red, 750 1 ball

White, 700 1 ball

Dark Grey, 715 1 ball

Short circular needle (30 cm/11.8 in) and double pointed

needles size 3 mm – US 2 or 3 – U/Canadian 11

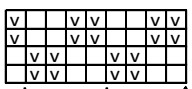
+ pair of small clasps, a small snap fastener

Gauge: 28 sts = approx. 10 cm/4 in over St st using needles size 3 mm. **Check your gauge to ensure success.**

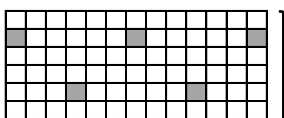
APRON

Using needles size 3 mm and dark grey yarn, cast on 42 sts. Work back and forth in patt I inside 2 sts at each edge worked in Garter st. When patt I is ready, cont working in patt II as charted, and dec 1 st over first row = 41 sts. Work in patt III after patt II until work measures 15 cm/5.9 in. Knit 1 row with grey yarn (= RS), and dec evenly across number of sts to be 25 sts. Cast on 30 sts with grey yarn to the end of the row. K30, P25 (= sts for apron), and cast on 30 sts with grey yarn to the end of the row = 83 sts. Work back and forth in patt IV. Bind off, knit-sts knitwise, and purl-sts purlwise. Sew a snap fastener on the backside of the belt, and pair of clasps at neck edge. Weave in all ends on WS.

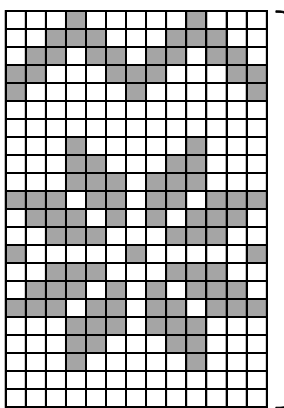
PATTERN I



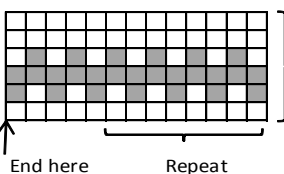
□ = knit on RS, purl on WS
 ▣ = purl on RS, knit on WS



PATTERN III



PATTERN II



PATTERN VI

□ = dark grey
 ▣ = white

Viking Merino Soft

Sweater, hat and pants

1405-13

Size: Babyborn – 42 cm

Babyborn - 16.5 in

Chest: 36 cm

14.2 in

Length: 16 cm

6.3 in

Sleeve length: 10 cm

4 in

Leg length: 10 cm

4 in

ALTERNATIVE YARNS: Viking Merino Soft (100% Merino Wool-Superwash) Viking Baby ull (100% merino wool), Viking pure milk fiber (100% milk fiber), Viking Alpaca Fine (85% Superfine Alpaca, 15% Highland wool), 50 g ball

Yellow, 745 :

2 balls

Black, 703 :

1 ball

Circular needle and double pointed needles size 2 ½ and 3 mm – US 1 or 2 and 2 or 3 – UK/Canadian 13 or 12 and 11 + 2 buttons

Gauge: 28 sts = approx. 10 cm/4 in over St st using needles size 3 mm. **Check your gauge to ensure success.**

When working in patt with 2 clrs, it's important to maintain the order of yarns over your finger. Always hold the darker clr in front throughout the whole project.

Using needles size 2½ mm and black yarn, cast on 108 sts. Work 4 rnds in K1,P1 rib. Change to needles 3 mm. Work in St st. Work in patt A until work measures approx. 8 cm/3.1 in (end with a complete square). Place markers each side, 55 sts front, and 53 sts for back. Cont working in St st with yellow. Bind off on 2nd rnd 8 sts at each side for armholes (4 sts both sides of the markers). Finish back and front separately.

Back: Cont working back and forth. Bind off at each edge 2x1 st. Next row: Bind off mid st. Work each side separately. Cont working until work measures 16 cm/6.3 in. Bind off. Work same for the other side, rev all shaping.

Front: Cont working back and forth, and bind of for armholes same as for back. When work measures approx. 14 cm/5.5 in, bind off 13 mid sts for neck edge. Finish each side separately. Bind off at neck edge every 2nd row 2x2 sts, and 1x1 st. When front measures same as back, bind off. Work same for the other front, rev all shaping.

Sleeves: Using needles size 2½ mm and black yarn, cast on 32 sts. Work 4 rnds in K1,P1 rib. Change to needles size 3 mm. Work in patt A, and inc evenly across 1st rnd number of sts to be 35 sts. Place a marker beg of rnd. Inc 1 st both sides of the marker approx. every 2 cm/0.8 in until there is 45 sts on a rnd, and sleeve measures approx.10 cm/4 in (end with a complete square). Cont working in St st with yellow yarn, and bind off 4 sts both sides of the marker mid under sleeve. Cont working back and forth. Bind off at each edge 2x1 st. Bind off rem sts.

Finishing: Join shoulder seams, 10 sts for each shoulder. Sew on sleeves.

Neck band: Using needles size 2½ mm and yellow yarn, pick or knit up approx. 45 sts. Work back and forth 3 rows in K1,P1 rib. Bind off.

Split edges: Beg from upper edge of neck band, and crochet dc-row along both sides of the split. Turn, and work another dc-row only to one side of the split, **but** with 2 buttonholes, over ch2. Make fast buttonhole on neck band, and the other after approx. 3 cm/1.2 in. Sew lower edge of buttonhole band over the other edge, and sew to the lower edge of the split.

Sew on sleeves. Sew on buttons.

Viking Merino Soft

Cardigan, pants, scarf and hat 1405-14

Size: BabyBorn – 42 cm

BabyBorn – 16.5 in

CARDIGAN

Chest: approx. 40 cm

15.7 in

Length: approx. 16 cm

6.3 in

Sleeve length: approx. 10 cm

4 in

PANTS

Width: approx. 32 cm

12.6 in

Leg length: approx. 10 cm

4 in

ALTERNATIVE YARNS: Viking Merino Soft (100% Merino Wool-Superwash), Viking Baby ull (100% merino wool), Viking pure milk fiber (100% milk fiber), Viking Alpaca Fine (85% Superfine Alpaca, 15% Highland wool), 50 g ball

Green 729 1 ball

Off-White, 702 1 ball

Double pointed needles and circular needles size 2½ and 3 mm – US 1 or 2 and 2 or 3 – UK/Canadian 13 or 12 and 11 + 3 buttons for cardigan + elastic for pants

Gauge: 28 sts = approx. 10 cm/4 in over St st using needles size 3 mm. **Check your gauge to ensure success.**

CARDIGAN

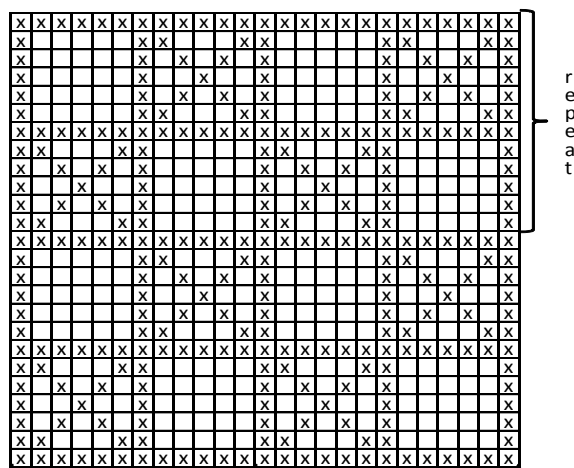
Using needles size 2½ mm and off-white yarn, cast on 109 sts. Work back and forth 6 rows in K1,P1 rib. Slip first and last 6 sts on holder (= sts for front bands) = 97 sts on a row. Change to needles size 3 mm and green yarn. Place markers each side, 51 sts for back, and 23 sts for both fronts. Cont working back and forth in St st and patt I as charted. When patt is ready, cont working in St st with off-white yarn until work measures 8 cm/3.1 in. Bind off 6 sts at each side (3 sts both sides of the markers). Leave sts on holder.

Sleeves

Using dpn size 2½ mm and off-white yarn, cast on 28 sts. Work 4 rnds in K1,P1 rib. Change to needles size 3 mm and green yarn. Work in patt I as charted (check from mid st were to beg). Inc evenly across 1st rnd number of sts to be 35 sts. Cont working in St st with off-white yarn. Place a marker mid under sleeve, and inc 1 st both sides of the marker approx. every 2 cm/0.8 in until there is altog. 45 sts on a rnd. When sleeve measures 10 cm/4 in, bind off 6 sts mid under sleeve (3 sts both sides of the marker). Slip sts on holder. Work same for the other sleeve.

Yoke: Slip all pieces on same circular needle, sleeves over the bound-off armhole sts = 163 sts. Place markers at each 4 seamlines. Cont working back and forth in St st with off-

Pattern A



☒ = Black
☐ = Yellow

PANTS

Beg from waist. Using needles size 2½ mm and yellow yarn, cast on 104 sts. Work in rnds in K1,P1 rib. Make an eyelet rnd after 2 rnds = K2tog, 1 yo, rep across the rnd. Work 2 rnds in rib. Change to needles size 3 mm. Cont working in St st. Place markers each side and mid front and back, 26 sts for each part. Work short rows for back. K8, turn, P16. Turn, K25, turn, P34. Turn, K43, turn, P52. You have now reached left side marker. Cont working in rnds in St st over all sts. When work measures approx. 9 cm/3.5 in (measured mid front), inc 1 st both sides of markers mid front and back. Rep inc every 2nd rnd altog. 3 times. Work each leg separately (leg is measured from here). Using 5 dpn, knit sts from mid marker mid front to marker mid back = 58 sts for each leg. Dec 1 st = 57 sts. Cont working in rnds in patt A. Inc **same time** 2 sts at inner seam of the leg approx. every 2 cm/0.8 in. When leg measures approx. 8 cm/3.1 in (end with a complete square), work 1 rnd with black yarn, and cont working in K1,P1 rib until leg measures approx. 10 cm/4 in. Bind off in rib. Work same for the other leg. Thread elastic through eyelet rnd.

HAT

Using needles size 2½ mm and black yarn, cast on 96 sts. Work 4 rnds in K1,P1 rib. Change to needles size 3 mm. Work in patt A. When work measures approx. 10 cm/4 in, dec for crown: Knit all sts tog in pairs. Knit 1 rnd. Rep dec every 2nd rnd until 12 sts rem. Break yarn, and thread through rem sts. Sew a small black pom-pom on top of the hat.

white yarn. Dec at each 4 seamline as foll: Work until 3 sts rem before marker, K2tog, P2, K2tog. Rep dec at each 4 seamline every 2nd row altog. 14 times = 51 sts rem. Dec evenly across last row to be 39 sts. Slip sts on holder.

Right front band: Slip 6 sts from holder over needles size 2½mm. Cont working back and forth in rib until front band reaches up to neck edge (don't stretch the band while measuring). Place markers for 3 buttonholes, one at neck edge, and rest 2 approx. 4 cm/ in spaced apart. Work same for **left front band**, but make buttonholes according to right side markers. Buttonhole: Bind off 2 sts, inside 2 sts from the edge. Next row: Cast on 2sts over the bound-off ones. Sew front bands to the body.

Neck band: Slip front band sts + neck edge sts over a short circular needle size 2½ mm = 51 sts. Work 6 rows in K1,P1 rib. Bind off in rib.

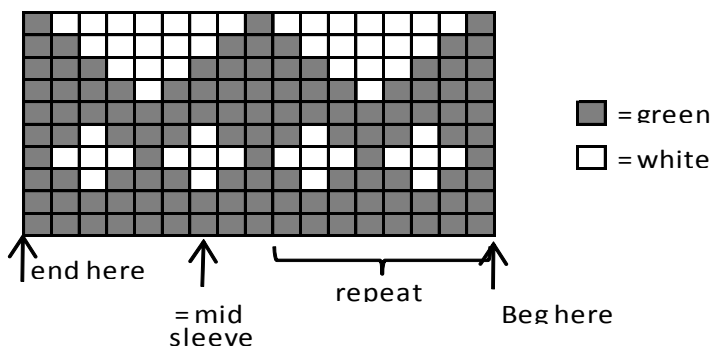
Sew on sleeves. Weave in all ends on WS. Sew 3 buttons on left front edge.

rep *-* across the rnd. Knit 1 rnd without dec. Rep dec every 2nd rnd with 1 st less between each dec until 22 sts rem. Next rnd: Knit all sts to in pairs = 11 sts. Break yarn, thread through rem sts, tighten the yarn, and weave in on WS. Weave in all ends on WS.

SCARF

Using needles size 3 mm and green yarn, cast on 3sts. Work in Garter st. Inc 1 st beg of each row until there is 15 sts on a row. Work 12 rows without inc. Slip every 2nd st on an extra needle, and hold back of the work. Work approx. 3 cm/1.2 in in K1,P1 rib over the rem sts, leave them to wait. Work same with the sts waiting on extra needle. Slip all sts over same needle again. Work 12 cm/4.7 in Garter st (measured from end of rib). Divide sts again, and work rib in two parts same as earlier. End work same as beg, but instead of inc, dec 1 st until 3sts rem on a row. Bind off.

PATTERN I



PANTS

Beg from upper edge: Using needles size 2½ and light green yarn, cast on 90 sts. Work 2 rnds in K1,P1 rib. Make an eyelet rnd: *K2tog, 1 yo*, rep *-* across the rnd. Work 2 rnds in rib over all sts. Change to needles size 3 mm, and cont working in rnds in St st. Work first short rows for back: Place markers each side, 45 sts for back and front, and around mid front and back sts. Beg from mid back, K5, turn, P9. Turn, and work each time 4 sts more until you have turned altog. 5 times at each side. Cont working in rnds over all sts until work measures approx. 10 cm/4 in, measured mid front. Divide work from mid front and back, 45 sts for each leg. Work each leg separately. Place a marker at the inner seam of the leg. Cont working in St st. Dec 1 st both sides of the marker approx. every 3 cm/1.2 in altog. 8 times = 29 sts rem. When leg measures approx. 8 cm/3.1 in, dec evenly across number of sts to be 26 sts. Work in rnds 2 cm/0.8 in in K1,P1 rib. Bind off in rib. Work same for the other leg. Weave in all ends on WS. Thread elastic through the eyelet rnd.

HAT

Using needles size 2½ mm and off-white yarn, cast on 88 sts. Work in rnds 2 cm/0.8 in in K1,P1 rib. Change to needles size 3 mm. Work in patt I as charted. When patt I is ready, cont working in St st with white yarn until work measures approx. 10 cm/4 in. Dec for crown: *K6, K2tog*,