

Viking Bjørk

Cardigan

1410-1A

Size : 2/3-4-6 yrs

Chest: 55-60-65 cm

21.7-23.6-25.6 in

Length : 36-40-45 cm

14.2-15.7-17.7 in

Sleeve length: 24-28-31 cm

9.4-11-12.2 in

ALTERNATIVE YARNS: Viking Bjørk (90 % cotton, 10% merino wool), Viking Alpaca Silk (50% alpaca, 50 % silk), 50 g ball

White, 500 : 4-5-6 balls

+ some green (536), cherry (563), violet (569) or light violet (567) for flowers

Circular needle and double pointed needles size 2 ½ and 3 mm – US 1 or 2 and 2 or 3 – UK/Canadian 13 or 12 and 11
Crochet hook size 2 ½ mm – US B/1 or C/2 – UK/Canadian 12
+ 3 buttons

Gauge: 28 sts = approx. 10 cm/4 in over pattern using needles size 3 mm. **Check your gauge to ensure success.**

Crochet abbreviations: ch(-st) = chain stitch, sl st = slip stitch, sc = single crochet, hdc = half double stitch, dc = double stitch

Using needles size 2½ mm and white yarn, cast on 155-169-183 sts. Work back and forth 4 rows in Garter st. Cont working in St st. Place markers each side, 39-43-46 sts for both fronts, and 77-83-91 sts for back. When work measures approx. 6 cm/2.4 in, change to needles size 3 mm. Cot working in patt as foll:

1st row : *K1, P1*, rep *-* across the row, K1 (RS)

2nd row : Knit (= WS).

Rep rows 1 and 2.

When work measures 24 – 27 – 31 cm/9.4-10.6-12.2 in, measured from cast-on edge, bind off 10-10-12 sts each side for armholes (= 5-5-6 sts both sides of the markers). Leave work aside, and knit the sleeves.

Sleeves

Using needles size 2½ mm and white yarn, cast on 45-49-51 sts. Work back and forth 4 rows in Garter st. Cont working in St st. Inc 1 st at each edge approx. every 2 cm/0.8 in. When sleeve measures approx. 6 cm/2.4 in, change to needles size 3 mm. Cont working in patt until there is 67-73-79 sts on a row, and sleeve measures approx. 24 – 28 – 31 cm/9.4-11-12.2 in.

Bind off at each edge 5-5-6 sts

Yoke

Slip sleeve sts on same circular needle as body, each one over the bound-off sts for armhole = 249 – 275 – 293 sts. Place markers at each 4 seamline. Cont working back and forth in patt same as before, and beg raglan-dec. Dec every 2nd row as foll: Work until 2 sts rem before a marker, K2togtbl, and after marker K2tog. Rep dec at each 4 seamline (= dec altog 8 sts on a row) until 73 – 75 – 77 sts

rem. Change to needles size 2 ½ mm, and cont working back and forth in Garter st, altog. 8 rows. Bind off rather loosely.

Finishing : Sew sleeve seams. Weave in all ends on WS. Crochet approx. 11-12-13 flowers using different clr.s. Sew them evenly spaced apart to the St st panel at lower edge. Crochet 2 slightly bigger flowers, and sew them to the lower edge of each sleeve (St st panel), mid sleeve.

Crochet flowers:

Using hook size 2½ mm, ch4, join into ring with 1 sl st.

1st rnd: Ch1, 9 hdc into ring. End with 1 sl st to 1st ch-st.

2nd rnd: Ch1, *1 sc, ch5* into next hdc, rep *-* 8 times = altog 9 times, and end with 1sl st to 1st ch-st beg of rnd = 9 ch-st loops.

Break yarn.

Note: **Flowers for sleeves:** Ch7 instead of ch5 for the loops.

Crochet 3 ch-st loops on right front edge for buttonholes, one just below neck band, one below beg of yoke, and one evenly spaced between these two.

Sew buttons on left front.

Viking Bjørk

Dress

1410-1B

Size : 2/3-4-6 yrs

Chest : 53-55-58 cm

20.9-21.7-22.8 in

Length : 54-56-60 cm

21.3-22-23.6 in

ALTERNATIVE YARN: Viking Bjørk (90 % cotton, 10% merino wool), Viking Alpaca Silk (50% alpaca, 50 % silk), 50 g ball

White, 500: 4-4-5 balls

Green, 536: 1-1-1 ball

Cherry, 563: 1-1-1 ball

Violet, 569: 1-1-1 ball

Light Violet, 567: 1-1-1 ball

Circular needle and double pointed needles size 2 ½ and 3 mm – US 1 or 2 and 2 or 3 – UK/Canadian 13 or 12 and 11
Crochet hook size 2 ½ mm – US B/1 or C/2 – UK/Canadian 12

Gauge: 25 sts = approx. 10 cm/4 in over St st using needles size 3 mm. 28 sts = approx. 10 cm/4 in over pattern using needles size 3 mm. **Check your gauge to ensure success.**

Crochet abbreviations: ch(-st) = chain stitch, sl st = slip stitch, sc = single crochet, hdc = half double crochet, dc = double crochet

Using needles size 2½ mm and cherry clr yarn, cast on 204-222-228 sts. Work in rnds in patt I as charted, with stripes as foll: 4 rnds with cherry, 2 rnds with green, 2 rnds with violet and 2 rnds with light violet.

Change to needles size 3 mm and white yarn. Cont working in patt St st. Divide work into six panels, 34-37-38 sts between each marker, and dec as foll: K2togtl before a marker, K2tog after a marker. Rep dec both sides of each 6 markers approx. every 6 ½ - 6 - 6 ½ cm/2.6-2.4-2.6 in altog. 6-7-7 times until 132-138-144 sts rem on a rnd. Place markers each side, 67-69-73 sts for each front, and 65-69-71 sts for back. When work measures 43 - 44 - 47 cm/ in, bind off 6-6-8 sts at each side (3-3-4 sts both sides of the markers) for armholes. Work back and front separately.

Back:

Cont working back and forth, first 4 rows in Garter st, and then as foll:

1st row : *K1, P1*, rep *-* across the row, end with K1 (RS)

2nd row : Knit (= WS).

Rep rows 1 and 2.

Bind off same time at each edge every 2nd row 1x2 sts, and 1x1 st. When work measures the given length, and armhole measures 11-12-13 cm/4.3-4.7-5.1 in, bind off.

Front

Work same as for back. When front measures 5-5-6 cm/2-2-2.4 in less than total length, bind off 13-15-17 mid sts.

Finish each side separately.

Right front:

Cont working back and forth same as before. Bind off at neck edge every 2nd row 1x4 sts, 1x3 sts, 1x2sts, and 1x1 st = 11-11-11 sts rem for shoulder. When front measures same as back, bind off.

Left front:

Work same as right front, rev all shaping.

Finishing

Sew shoulder seams.

Weave in all ends on WS.

Armhole bands:

Using needles size 3 mm and white yarn, pick or knit up approx. 72-72-84 sts round armhole. Knit 1 rnd, and cont working in patt I as charted (check from mid st where to beg patt) with stripes in opposite order, ending with cherry.

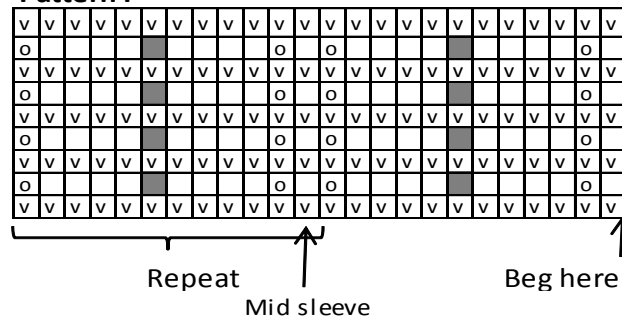
Dec same time 1 st beg and end of each rnd every 3rd rnd.

When patt I is ready, bind off rather loosely.

Neck band :

Using hook size 2½ mm and white yarn crochet sc round neck edge.

Pattern I



□ = Purl on RS, knit on WS

○ = 1 yo

■ = Sl 1 st, K2tog, pss0

□ = Knit on RS. purl on WS

Crochet as many flowers as you wish, and sew on the dress.

Little flower:

Using crochet hook size 2½ mm, ch4, join into ring with 1 sl st.

1st rnd: Ch1, 9 hdc into ring, end with 1 sl st to 1st ch-st.

2nd rnd: Ch1, *1 sc, ch5 into next hdc*, rep *-* across the rnd = 9 loops. End with 1 sl st to 1st ch-st.

Break yarn.

Green flower:

Using crochet hook size 2½ mm, ch4, join into ring with 1 sl st.

1st rnd: 8 sc into ring, end with 1 sl st to 1st sc.

2nd rnd: ch5 + 1 sc to each 8 sc = 8 loops.

3rd rnd: 1st loop: * 1 sl st, 1 sc, 1 hdc, 1 dc, 1 hdc, 1 sc, 1 sl st*, rep *-* for each 8 loops.

Break yarn,

Pink or two-clred flower:

Using crochet hook size 2½, ch4, join into ring with 1 sl st.

1st rnd: Ch3 = 1st dc, 2 dc into ring , *ch2, 3 dc into ring *, rep *-* 3 times = altog 4 times. Ch2, and end with 1 sl st to 3rd ch-st beg of rnd = 5 ch-spaces.

2nd rnd: (change clr), ch1, crochet to each ch-space: 1 dc, ch1, 2 sc, ch2, 1 dc, ch2, 2 dc, ch1, 1 sc and ch1. End with 1 sl st to first sc beg of rnd = 5 petals

Break yarn.

Viking Bjørk

Hat

1410-2

Size : 1 - 2 - 4 - 6 yrs

ALTERNATIVE YARNS: Viking Bjørk (90% cotton, 10% merino wool), Viking Alpaca Silk (50% alpaca , 50% silk), 50 g ball

Pink, 564 : 1-1-1-1 ball
White, 500 : some rest yarn

Needles size 2½ and 3 mm – US 1 or 2 and 2 or 3 - UK/Canadian 13 or 12 and 11
Crochet hook size 3 mm – US C/2 or D/3 – UK/Canadian 11
3 pearls

Gauge: 25 sts = approx. 10 cm/4 in over St st using needles size 3 mm. **Check your gauge to ensure success.**

Crochet abbreviations:

sc = single crochet, ch(-st)= chain stitch, sl st = slip stitch, hdc= half double stitch, dc = double crochet

Using needles size 2 ½ mm, cast on 96 – 100 – 104 – 108 sts. Work in 6 rnds in Garter st. Change to needles size 3 mm. Work 1 rnd in St st, and after that in patt A until hat measures approx. 11 – 12 – 13 – 14 cm/ 4.3-4.7-5.1-5.5 in (end as charted). Dec across next rnd all purl-sts: *K2tog, sl next st, K1, psso*, rep *-* across the rnd. There is now 72 – 75 – 78 – 81 sts on a rnd. Cont working in St st, and adjust across 1st rnd number of sts to be 72 – 72 – 78 – 78 sts. Beg dec for crown: *K10 – 10 – 11 – 11, K2tog*, rep *-* across the rnd. Knit 1 rnd without dec. Rep dec every 2nd rnd with 1 st less between dec each time 5 – 5 – 6 – 6 times, and after that every rnd until 18 sts rem. Break yarn, thread through rem sts, tighten the yarn, and weave in on WS.

CROCHET FLOWER

Using crochet hook size 3 mm and pink yarn, ch5, join into ring with 1 sl st.

1st rnd : Ch1, 9 sc into ring, end with 1 sl st to first ch-st beg of rnd.

2nd rnd : Ch1. Crochet to each sc: 1 sc, ch3. 1 hdc and 1 dc to 3rd ch-st from the hook. End with 1 sl st to first sc beg of rnd = 9 petals.

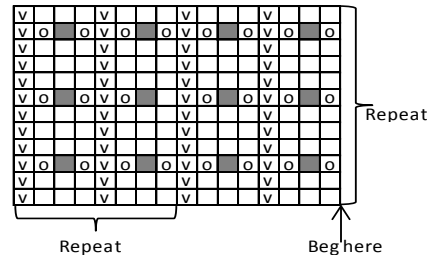
3rd rnd: Change to white yarn, and turn the work, cont working from WS: *1 sc, ch4, skip next sc*, rep *-* across the rnd = 9 ch-spaces.

4th rnd: Turn work, and cont working from RS again. Work round first ch-space: ch2 (= 1 sc), 7 dc and 1sc. Skip over to next ch-space, *1 sc, 7 dc and 1 sc*, rep *-* round each ch-space

Break yarn.

Fasten flower on hat, and embellish with 3 pearls.

Pattern A



- = Knit on RS, purl on WS
- ▣ = Purl on RS, knit on WS
- = 1 yo
- = Sl 1 st, K2tog, psso

Viking Bjørk

Dress

1410-3

Size : 1 - 2 - 4 - 6 yrs

Chest : 48-52-56-59 cm
18.9-20.5-22-23.2 in

Length : 48-53-56-60 cm
18.9-20.9-22-23.6 in

ALTERNATIVE YARNS: Viking Bjørk (90% cotton, 10% merino wool), Viking Alpaca Silk (50% alpaca , 50% silk), 50 g ball

White, 500 : 3-4-5-5 balls

Needles size 2½ and 3 mm – US 1 or 2 and 2 or 3 – UK/Canadian 13 or 12 and 11

Gauge: 25 sts = approx. 10 cm/4 in over St st using needles size 3 mm. **Check your gauge to ensure success.**

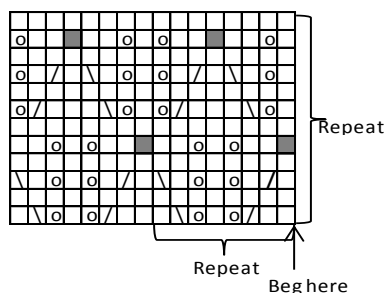
Using needles size 2 ½ mm, cast on 300 – 336 – 360 – 384 sts. Work in rnds in Garter st. After 4 rnds, beg dec as foll: *K10 – K2tog*, rep *-* across the rnd. Rep dec every 4th rnd (always dec on knit-rnd), with 1 st less between dec until 175 – 196 – 210 – 224 sts rem, and there is 12 rills altog. Work 1 rnd in St st, and adjust number of sts to be 176 – 192 – 208 – 224 sts. Place markers each side, 88 – 96 – 104 – 112 sts for front and back.

Change to needles size 3 mm, and cont working in patt I until work measures approx. 31 – 35 – 37 – 40 cm/12.2-13.8-14.6-15.7 in. Work 1 rnd in St st, and adjust number of sts to be 174 – 192 – 207 – 222 sts. Work in patt II until work measures approx. 36 – 40 – 42 – 45 cm/14.2-15.7-16.5-17.7 in. Work 2 rnds in St st, and dec evenly across 1st rnd number of sts to be 120 – 130 – 140 – 150 sts. Bind off on 2nd rnd 10 – 10 – 12 – 12 sts at each side for armholes (5 – 5 – 6 – 6 – sts both sides of the markers).

Cast on 46 – 49 – 54 – 57 sts over bound-off sts of both armholes. There is now 192 – 208 – 224 – 240 sts on a rnd. Change to needles size 2 ½ mm, and cont working in Garter st. Beg yoke dec after 2 rills: *K14 – K2tog*, rep *-* across the rnd. Rep dec every 2nd rill (always dec on knit-

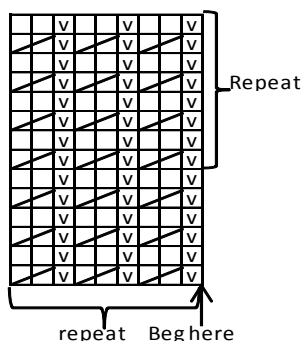
rnd), with 1 st less between dec until 108 – 117 – 126 – 135 sts rem on a rnd. Bind off tightly.
Weave in all ends on WS.

Pattern I



- = Knit
- ▤ = K2tog
- = 1 yo
- ∇ = Sl 1 st, K1, pssso
- = Sl 1 st, K2tog, pssso

Pattern II



- = knit
- ∇ = purl
- ▤ = Knit 2nd st back of work, knit 1st st, sl both on RH needle

Viking Bjørk

Slipover

1410-4

Size :	1-2-4-6 yrs
Chest :	46-50-55-59 cm 18.1-19.7-21.7-23.2 in
Length :	30-36-40-45 cm 11.8-14.2-15.7-17.7 in

ALTERNATIVE YARNS: Viking Bjørk (90% cotton, 10% merino wool), Viking Alpaca Silk (50% alpaca , 50% silk), 50 g ball

Off-White, 502 : 2-3-3-4 balls

Needles size 2 ½ and 3 mm – US 1 or 2 and 2 or 3 – UK/Canadian 13 or 12 and 11

Gauge: 38 sts = approx. 10 cm/4 in over cable pattern using needles size 3 mm. **Check your gauge to ensure success.**

Using needles size 2 ½ mm, cast on 132 – 144 – 156 – 168 sts. Work in rnds approx. 4 – 4 – 5 – 5 cm/1.6-1.6-2-2 in in K2,P2 rib. Change to needles size 3. Work 1 rnd in St st, and inc evenly across number of sts to be 176 – 192 – 208 – 224 sts. Place markers each side, 88 – 96 – 104 – 112 sts for both front and back. Work in patt A. When work measures approx. 16 – 21 – 24 – 28 cm/6.3-8.3-9.4-11 in, bind off 2 sts mid front for V-neck. Cont working back and front (always make cable twists on RS). Beg V-neck dec after 1 cm/0.4 in: K1 (= 1 selvage st, knit every row), sl 1 st, K1, pssso, work until 3 sts rem, K2tog, K1 (= selvage st).

Rep dec approx. every 1 cm/0.4 in, **but** when work measures approx. 18 – 23 – 26 – 30 cm/7.1-9.1-10.2-11.8 in, bind off 20 sts at each side for armholes (10 sts both sides of the markers), finish back and fronts separately.

Back : Cont working back and forth in patt A until work measures approx. 30 – 36 – 40 – 45 cm/11.8-14.4-15.7-17.7 in.

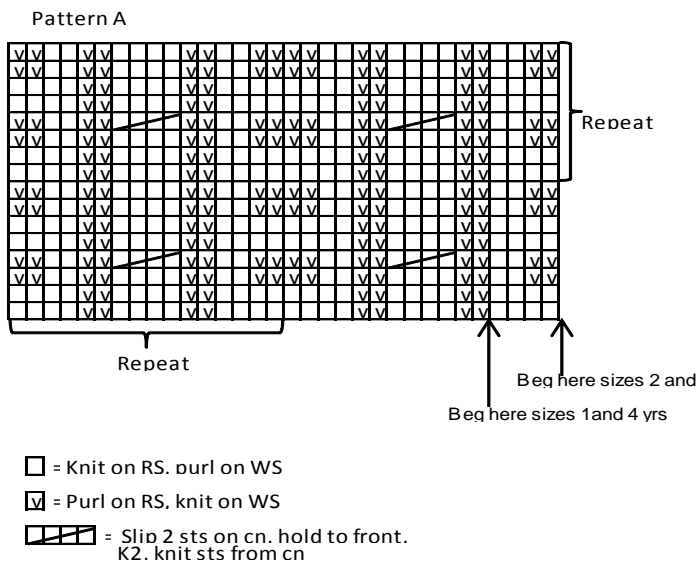
Right front : Work same as for back, and cont rep V-neck dec approx. every 1 cm/0.4 in until 20 – 22 – 25 – 28 sts rem for shoulder. Cont working without dec until front measures same as back. Dec over last row all purl-sts = 16 – 18 – 21 – 24 sts rem. Bind off.

Work same for left front, rev all shaping.

Armhole bands : Using needles size 2½ mm, pick or knit up approx. 62 – 66 – 70 – 74 sts along front and back.

Work **back and forth** approx. 3½ cm/1.4 in (will be joined tog later on) in K2,P2 rib. Bind off in rib. Work same for the other armhole band.

Neck band : Beg from left shoulder. Using needles size 2½ mm, pick or knit up approx. 32 – 35 – 37 – 40 sts along V-neck, 1 st mid front, approx. 32 – 35 – 37 – 40 sts along V-neck and 38 – 40 – 40 – 42 sts from back = 103 – 111 – 115 – 123 sts on a rnd. Work 1 rnd in St st, and after that in K2,P2 rib, and **same time** dec 1 st both sides of mid front st every rnd. When neck band measures approx.3 cm/1.2 in, bind off in rib.



Viking Bjørk

Sweater, shorts and hat 1410-5

Size:	9 months-1-2-3-4 yrs
Chest:	36-42-45-48-52 cm 14.2-16.5-17.7-18.9-20.5 in
Sleeve length:	22-24-28-30-32 cm 8.7-9.4-11-11.8-12.6 in
Length:	33-36-39-41-43 cm 13-14.2-15.4-16.1-16.9 in
Hips:	48-50-52-56-56 cm 18.9-19.7-20.5-22-22 in
Leg length:	8-10-12-14-16 cm 3.1-4-4.7-5.5-6.3 in

ALTERNATIVE YARNS: Viking Bjørk (90 % cotton, 10% merino wool), Viking Alpaca Silk (50% alpaca, 50 % silk), 50 g ball

Sweater

Light Pink, 565: 3-3-4-4-5 balls

Shorts

Beige, 507: 2-2-2-2-2 balls

Hat

Beige, 507: 1-1-1-1-1 ball

Light Pink 565, use rest yarn from sweater

Needles size 2 ½ and 3 mm – US 1 or 2 and 2 or 3 –

UK/Canadian 13 or 12 and 11

Crochet hook size 2 ½ mm – US B/1 or C/2 –

UK/Canadian 12

+ 1 button and elastic for shorts

Gauge: 25 sts = approx. 10 cm/4 in over St st using needles size 3 mm. **Check your gauge to ensure success.**

Gauge, crochet: 24 sc in width using crochet hook size 2 ½ mm = approx. 10 cm/4 in. **Check your gauge to ensure success.**

Crochet abbreviations:

ch(-st) = chain stitch

sc = single crochet

dc = double crochet

Picot: Ch4, 1 sc to first of these ch-sts

Crochet edge:

Ch3, 1 picot, 1 dc to same st as 3 ch-sts. Rep into every 3rd st of prev rnd (1 dc, 1 picot, 1 picot). End with 1 sl st.

SWEATER

Back

Using needles size 3 mm and light pink yarn, cast on 45-53-57-61-65 sts. Work back and forth in mock patent patt:
 1st row: 1 selvage st, *K3, sl 1 st tbl with yarn in front*, rep *-* across the row, end with K3, 1 selvage st.

2nd row: 1 selvage st, K1, *sl 1 st tbl with yarn in front, K3*, rep *-*, across the row, sl 1 st tbl with yarn in front, K1, 1 selvage st.

Rep rows 1-2.

When work measures 28-31-34-36-38 cm/ in, bind off mid back st = split. Finish back and front separately.

Cont working back and forth in patt same as before until work measures 33-36-39-41-43 cm/13-14.2-15.4-16.1-16.9 in, or as desired.

Bind off knitwise (or bind off 10-13-14-15-16 first sts from split, and leave rem 12-13-14-15-16 sts on holder).

Work same for the other side.

Front

Work same as for back without split. Bind off knitwise (or bind off mid 21-27-29-31-33 sts for neck edge, and leave rem sts on holder)

Sleeves

Using needles size 2½ mm and light pink, cast on 40-44-48-52-54 sts. Work in rnds 3-3-4-4-4 cm/1.2-1.2-1.6-1.6-1.6 in in St st. Eyelet rnd *K2tog, 1 yo*, rep *-* across the rnd = folding edge. Work 3-3-4-4-4 cm/1.2-1.2-1.6-1.6-1.6 in in St st. Change to needles size 3 mm. Cont working in St st. Place a marker beg of rnd = mid under sleeve. Inc 1 st both sides of the marker approx. every 2 cm/0.8 in (same for all sizes) until there is altog. 60-64-70-74-80 sts on a rnd. When sleeve measures approx.22-24-28-30-32 cm/8.7-9.4-11-11.8-12.6 in, measured from folding edge, bind off.

Finishing

Join shoulder seams. Sew side seams, leaving 12-13-14-15-16 cm/4.7-5.1-5.5-5.9-6.3 in for armholes.

Fold cast on edge in double, and sew on WS.

Sew on sleeves.

Weave in all ends on WS.

Crochet a buttonhole loop (= ch-sts) to the upper edge of split, and sew on a button.

SHORTS

Beg from waist. Using needles size 2½ mm and beige yarn, cast on 120-126-130-140-140 sts. Work in rnds 5 cm/2 in in K1,P1 rib. Change to needles size 3 mm. Place markers each side, 60-63-65-70-70 sts for both back and front.

Work short rows for back: Beg mid back, K7-7-8-8-8, turn, P14-14-16-16-16, turn. Work 7-7-8-8-8 sts more altog. 4 times at each side. Work 1rnd in St st over all sts. Cont working in rnds in St st until work measures 17-18-20-21-

22 cm/ in (measured from cast-on edge). Place markers mid front and back. Inc 1 st both sides of the markers every 2nd rnd altog. 7 times = 148-154-158-168-168 sts. Divide work in two = 74-77-79-84-84 sts for each leg. Finish each leg separately. Cont working in rnds in St st. Dec 1 st beg and end of each rnd (= inner seam) approx. every 3-3-4-4-5 cm/1.2-1.2-1.6-1.6-2 in, 3 times = 68-71-73-78-78 sts rem. When le measures 9-10-12-14-16 cm/3.5-4-4.7-5.5-6.3 in (measured from crotch), bind off all sts rather loosely. Work same for the other leg. Sew crotch seam. Weave in all ends on WS. Fold waist rib in double and sew on WS. Thread elastic through casing. Crochet borders for each leg: Using crochet hook size 2½ mm and beige yarn, crochet 69-69-72-78-78 sc along lower edge of leg, and work in patt for crochet edge. Weave in all ends on WS.

HAT

Using needles size 3 mm and beige yarn, cast on 80-90-90-100-100 sts. Work in rnds in St st until work measures 13-14-15-16-17 cm/5.1-5.5-5.9-6.3-6.7 in, measured from cast-on edge. Beg dec for crown: *K8, K2tog*, rep *-* across the rnd. Knit 1 rnd without dec. *K7, K2tog*, rep *-* across the rnd. Knit 1 rnd without dec. Rep dec in the same way, with 1 st less between each dec until 16-18-18-20-20 sts rem. Knit all sts tog in pairs. Break yarn, thread through rem sts, pull tightly, and weave in on WS. Using crochet hook size 2½ mm and light pink yarn, crochet 78-90-90-99-99 sc along lower edge of hat, and work in patt for crochet edge. Break yarn, and draw through the loop. Weave in all ends on WS.

Viking Bjørk

Top and pants

1410-6

Size :	1 - 2 - 4 - 6 yrs
Chest:	48-51-54-58 cm 18.9-20.1-21.3-22.8 in
Length :	30-35-40-44 cm 11.8-13.8-15.7-17.3 in
Hips :	48-51-54-58 cm 18.9-20.1-21.3-22.8 in
Leg length :	12-13-14-15 cm 4.7-5.1-5.5-5.9 in

ALTERNATIVE YARNS: Viking Bjørk (90% cotton, 10% merino wool), Viking Alpaca Silk (50% alpaca , 50% silk), 50 g ball

Cherry, 563 : 4 - 4 - 5 - 5 balls

Needles size 2½ and 3 mm – US 1 or 2 and 2 or 3 – UK/Canadian 13 or 12 and 11 + elastic

Gauge: 25 sts = approx. 10 cm/4 in over St st using needles size 3 mm. **Check your gauge to ensure success.**

TOP

Using needles size 2 ½ mm, cast on 61 – 65 – 69 – 73 sts. Work back and forth 6 rows in Garter st. Change to needles size 3 mm. Work in patt A inside selvage sts (= knit first and last st every row) until work measures approx. 5 – 5 – 6 – 6 cm/2-2-2.4-2.4 in = back. Work same for front.

Knit both pieces on same circular needle size 3 mm, and purl tog first st on back and last st on front = first st for patt A, work same for the other side. There is now 120 – 128 – 136 – 144 sts on a rnd. Place markers round both side sts = 59 – 63 – 67 – 71 sts for each piece + side sts. Cont working in rnds in patt A until work measures approx. 18 – 22 – 26 – 29 cm/7.1-8.7-10.2-10.2-11.4 in. Bind off on last rnd 10 – 10 – 12 – 12 sts at each side for armholes (5 – 5 – 6 – 6 sts both sides of the markers).

Cast on 46 – 50 – 56 – 60 sts over the bound-off sts for armhole edges. There is now 192 – 208 – 224 – 240 sts on a rnd. Change to needles size 2 ½ mm, and cont working in Garter st. After 2 rills, beg dec for yoke as foll: *K14 – K2tog*, rep *-* across the rnd. Rep dec every 3rd rill (always on knit-rnd), with 1 st less between each dec until there is 108 – 117 – 126 – 135 sts on a rnd. Bind off tightly.

Weave in all ends on WS.

PANTS

Beg from waist.

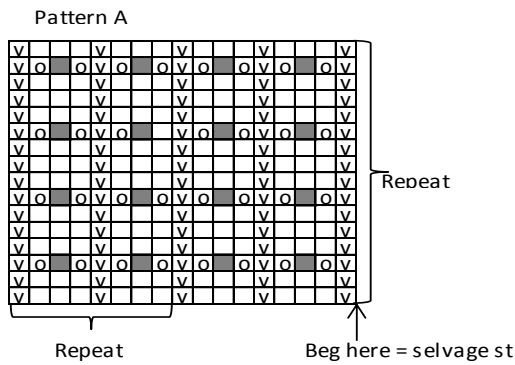
Using needles size 2 ½ mm, cast on 108 – 116 – 124 – 132 sts. Work in rnds approx. 2 – 2 – 3 – 3 cm/0.8-0.8-1.2-1.2 in in K1,P1 rib. Change to needles size 3 mm. Work 1 rnd in St st, Inc evenly across 1st rnd number of sts to be 120 – 128 – 136 – 144 sts. Place markers each side, 61 – 65 – 69 – 73 sts for back, and 59 – 63 – 67 – 71 sts for front, and round sts mid front and back.

Beg from mid back marker. K7 – 9 – 8 – 10, turn, P13 – 17 – 15 – 19. Turn, and work 8 – 8 – 9 – 9 sts more each time until you reach both side markers. Work in rnds in patt A over all sts. When work measures approx. 20 – 21 – 21 – 22 cm/7.9-8.3-8.3-8.7 in (measured mid front), inc 1 st both sides of markers mid front and back. Rep inc every 2nd rnd 7 – 7 – 8 – 8 times. There is now 148 – 156 – 168 – 176 sts on a rnd. Work each leg separately.

Knit sts from mid front marker until mid back marker on same circular needle = 74 – 78 – 84 – 88 sts for each leg. Place a marker beg of rnd = inner seam of leg. Cont working in patt A, and dec 1 st both sides of the marker approx. every 1 ½ – 2 – 1 ½ – 2 cm/0.6-0.8-0.6-0.8 in until there is 62 – 66 – 70 – 74 sts on a rnd, and leg measures approx. 12 – 15 – 17 – 19 cm/4.7-5.9-6.7-7.5 in. Change to needles size 2 ½ mm, work 6 rnds in Garter st. Bind off.

Work same for the other leg.

Finishing: Sew on elastic with cross-sts on WS waist rib.



- = Knit on RS. purl on WS
- ▤ = Purl on RS. knit on WS
- = 1 yo
- = Sl 1 st, K2tog, pssso

Viking Bjørk

Dress

1410-7

Size : 1 - 2 - 4 - 6

YRS

Chest 48-52-56-60 cm

18.9-20.5-22-23.6 in

Length : 48-53-56-60 cm

18.9-20.9-22-23.6 in

ALTERNATIVE YARNS: Viking Bjørk (90% cotton, 10% merino wool), Viking Alpaca Silk (50% alpaca , 50% silk), 50 g ball

White, 500 : 2-3-3-4 balls
 Light Pink, 565 : 1-2-2-3 balls
 Heather, 568 : 1-1-1-1 ball
 Cherry, 563 : 1-1-1-1 ball

Needles size 2½ and 3 mm – US 1 or 2 and 2 or 3 – UK/Canadian 13 or 12 and 11
 Crochet hook size 2 mm – US B/1 – UK/Canadian 14

Gauge: 25 sts = approx. 10 cm/4 in over St st using needles size 3 mm. **Check your gauge to ensure success.**

Crochet abbreviations:

ch(-st) = chain stitch, sc = single crochet, dc = double crochet

Pattern A, Drop stitch pattern:

Rows 1-5 : St st (first row = purl from WS).
 Row 6 (always RS) : St st over 2 sts, * count 5 sts downwards, insert tip of RH needle into this st, and let 4 sts unravel (= loosen up the sts) = drop st, St st over 5 sts *, rep *-* across the row, end with St st over 2 sts.
 Rows 7-11 : St st
 Row 12 (always RS) : St st over 5 sts, * count 5 sts downwards, insert tip of RH needle into this st, and let 4 sts unravel, St st over 5 sts*, rep *-* across the row.
 Rep these 12 rows.

Using needles size 2½ mm and light pink, cast on 480 – 512 – 576 – 608 sts. Work 6 rnds in Garter st. Change to needles size 3 mm and white yarn. Cont working in patt I and dec as charted. There is now 180 – 192 – 216 – 228 sts on a rnd. Change to cherry clr yarn, and work 2 rills, **but** dec evenly across 3rd rnd number of sts to be 180 – 190 – 210 – 220 sts. Change to heather clr yarn, and work 1 rill. Change to white and light pink yarn, work in patt II and dec as charted. There is now 144 – 152 – 168 – 176 sts on a rnd. Work in patt A, and adjust on 1st rnd number of sts to be 140 – 150 – 170 – 180 sts. Place markers each side, 70 – 75 – 85 – 90 sts for both back and front. Dec 1 st both sides of markers (= dec 4 each rnd) approx. every 1 – 2 – 1 ½ – 2 cm/0.4-0.8-0.6-0.8 in until there is 120 – 130 – 142 – 152 sts on a rnd, and work measures approx. 22 – 26 – 28 – 31 cm/8.7-10.2-11-12.2 in. Adjust across last rnd number of sts for sizes 4 and 6 to be 140 – 150 sts. Place markers each side, 61 – 65 – 71 – 75 sts for front, and 59 – 65 – 69 – 75 sts for back. Work in patt III. Change to heather clr yarn, and work 2 rills. Change to cherry clr yarn, and work 1 rill. Change to light pink yarn, and work in patt IV, but adjust across 2nd rnd number of sts to be 120 – 128 – 136 – 144 sts. When patt IV is ready, cont working in St st with light pink yarn until work measures approx. 22 – 26 – 28 – 31 cm/8.7-10.2-11-12.2 in. Place new markers on each side (check from mid front), 61 – 65 – 69 – 73 sts for front, and 59 – 63 – 67 – 71 sts for back. Bind off 10 sts on last rnd at each side for armholes, (5 sts both sides of the markers).

Back: Cont working back and forth in patt A, check from mid st where to beg patt on 6th row. Bind off at each edge every 2nd row 1x2 sts, and 1x1 st. When work measures approx. 48 – 53 – 56 – 60 cm/18.9-20.9-22-23.6 in, bind off.

Front: Work same as for back. When work measures approx. 42 – 46 – 49 – 52 cm/16.5-18.1-19.3-20.5 in (or 6 – 7 – 7 – 8 cm/2.4-2.8-2.8-3.1 in less than total length), bind off 13 – 13 – 15 – 15 mid sts. Finish each side separately. Bind off at neck edge every 2nd row 1x4 sts, 1x2 sts and 2x1st. When front measures same as back, bind off. Work same for the other side, rev all shaping.

Finishing : Join shoulder seams, 8 – 10 – 11 – 13 sts for each shoulder. Weave in all ends on WS.

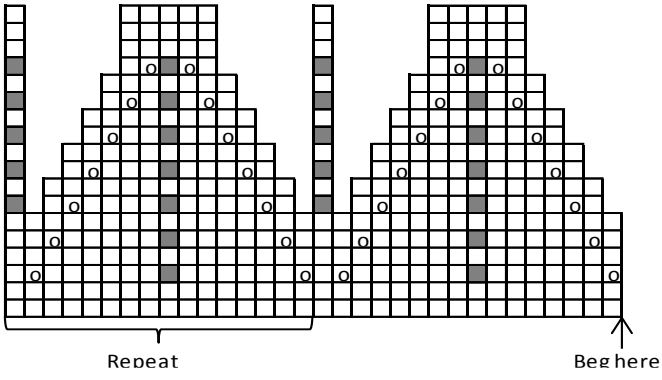
Neck band: Using light pink yarn, crochet sc round neck edge (make sure neck band doesn't turn out too tight or loose).

1st rnd: Ch3 = 1st dc, *ch1 – skip 1 st – 1 dc*, rep *-* across the rnd, end with 1 sl st to 3rd ch-st beg of rnd.

2nd rnd: Ch1 = 1 sc. Work in sc, end with 1 sl st to first ch-st. Break yarn, and draw through last loop.

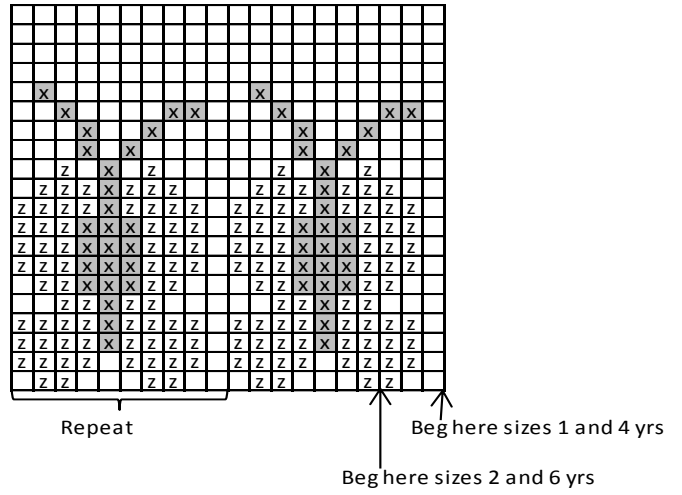
Armhole edge: Work same as for neck band.

Pattern I

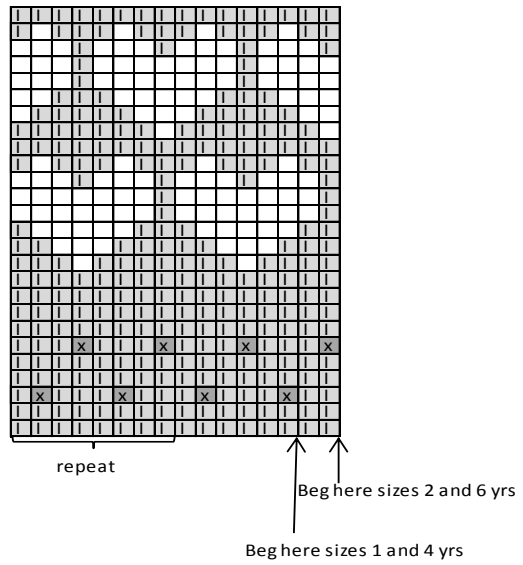


- o = 1 yo
- = Sl 1 st, 2tog, pssso
- = White
- = Light Pink
- x = Cherry
- z = Heather
- = K2tog

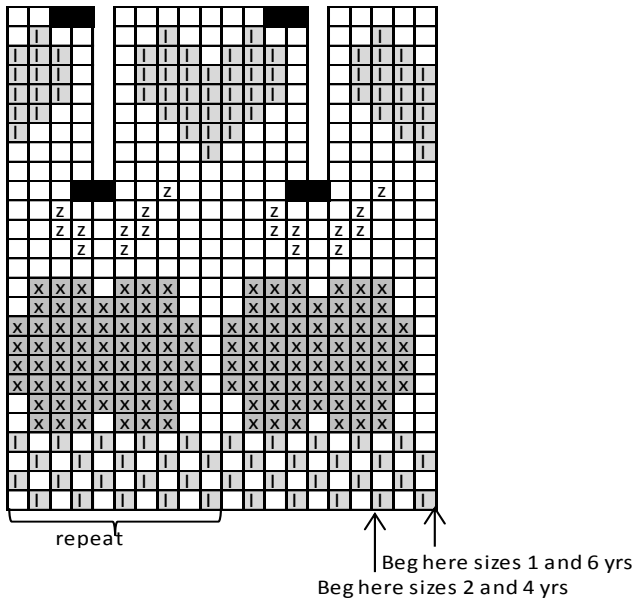
Pattern III



Pattern IV



Pattern II



Viking Bjørk

Dress

1410-8

Size:	6 months	1 yrs	2 yrs	4 yrs
Chest:	43 -	50 -	53 -	58 cm
	16.9	19.7	20.9	22.8 in
Length:	42 -	45 -	48 -	52 cm
	16.5	17.7	18.9	20.5 in

ALTERNATIVE YARNS: Viking Bjørk (90 % cotton, 10 % merino wool), Viking Alpaca Silk (50 % alpaca, 50 % silk), 50 g ball

White, 500: 3 - 3 - 4 - 4 balls
 Pink, 565: 1 - 1 - 1 - 1 ball

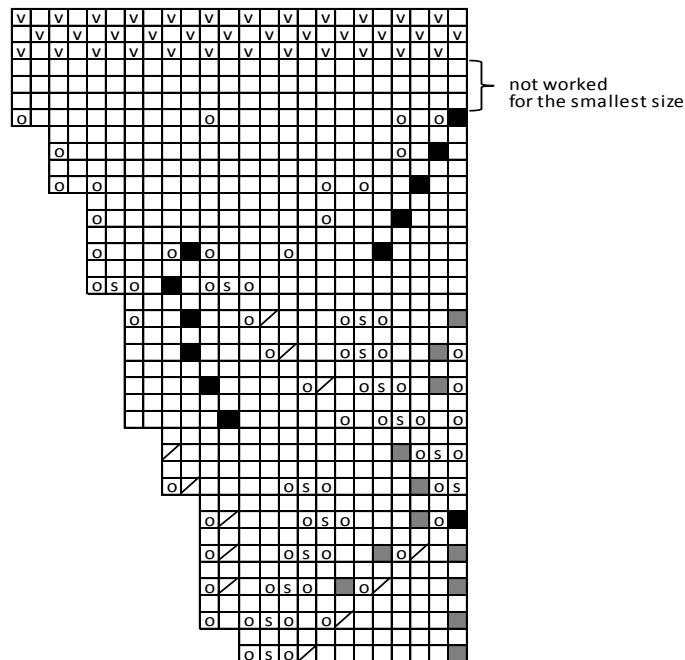
Circular needle and double pointed needles size 2 ½ and 3 mm – US 1 or 2 and 2 or 3 – UK/Canadian 13 or 12 and 11

Gauge: 25 sts = approx. 10 cm/4 in over St st using needles size 3 mm. **Check your gauge to ensure success.**

Beg from neck edge: Using needles size 2½ mm and pink yarn, cast on 72-84-96-96 sts. Work 6 rnds in Garter st. Change to needles size 3 mm and white yarn. Work 1 rnd in St st. Cont working in patt and inc as charted until there is 144-168-192-192 sts on a rnd. End with Seed st as charted. Bind off rather loosely in Seed st (purl-sts knitwise, and knit-sts purlwise).

Knit or pick up sts from WS (first rnd in Seed st after lace patt), 45-51-55-59 sts for back, skip 27-33-41-37 sts = sleeve, cast on 9-11-11-13 sts for armhole, pick or knit up 45-51-55-59 sts for front, skip 27-33-41-37 sts for sleeve, and cast on 9-11-11-13 sts for armhole. There is now 108-124-132-144 sts on a rnd. Place 4 markers across the rnd: One mid front and back, and one on each side (place each marker round 1 st). There is now 26-30-32-35 sts between each marker. Cont working in St st (armhole sts are worked in K1,P1 rib for first 3 rnds), and inc 1 st both sides of the markers (= inc 8 sts on a rnd). Rep in every 6th rnd until work measures approx. 2 cm/0.8 in less than the given length, or as desired. Work 6 rnds in Seed st. Bind off rather loosely in Seed st.

Weave in all ends on WS.



- = knit (knit on RS, purl on WS)
- = K2togtbl
- = slip 1 st, K2tog, pssso
- = 1 yo
- = K1tbl
- = K2tog
- = purl (purl on RS, knit on WS)

Viking Bjørk

Hat

1410-9

Size: 3/6 months - 1-2-4 yrs

ALTERNATIVE YARNS: Viking Bjørk (90 % cotton, 10 % merino wool), Viking Alpaca Silk (50 % alpaca, 50 % silk), 50 g ball

Light Pink, 565:-1-1-1-1 ball

Circular needle size 2 ½ and 3 mm – US 1 or 2 and 2 or 3 – UK/Canadian 13 or 12 and 11. White silk ribbon, approx 1 m/39.4 in

Gauge: 25 sts = approx. 10 cm/4 in in width using needles size 3 mm. **Check your gauge to ensure success.**

Using needles size 3 mm and light pink yarn, cast on 264-276-300-312 sts. *K5, P1*, rep *-* across the rnd. Cont working as established, **but** dec 1 st beg and end of each knit panel (= K2tog before and after each purl-st across the rnd), rep dec every 6-6-7-7 rnd, 2 times = 88-92-100-104 sts. K1 rnd, + 1 eyelet rnd = *1 yo, K2tog*, rep *-* across the rnd. Cont working in St st. When work measures 12-13-14-15 cm/4.7-5.1-5.5-5.9 in, measured from last dec-rnd, knit 1 rnd and adjust number of sts to be 88-88-96-104 sts. Beg dec for crown: *K6, K2tog*, rep *-* across the

rnd. Knit 1 rnd without dec. *K5, K2tog*, rep *-* across the rnd. Knit 1 rnd without dec. Rep dec every 2nd rnd with 1 st less between each dec until 22-22-24-26 sts rem. Knit all sts tog in pairs. Break yarn, thread through rem sts, tighten the yarn, and weave in on WS. Weave in all ends on WS.

Thread a silk ribbon through eyelet rnd, and tie into a bow.

Viking Bjørk

Overall

1410-10

Size	-1-3-6-9-12 months-2 yrs
Chest-	40-43-47-51-55-60 cm
	15.7-16.9-18.5-20.1-21.7-23.6 in
Length-	40-43-46-49-52-55 cm
	15.7-16.9-18.1-19.3-20.5-21.7 in
Leg length-	5-6-7-8-9-10 cm
	2-2.4-2.8-3.1-3.5-4 in

ALTERNATIVE YARNS: Viking Bjørk (90 % cotton, 10% merino wool), Viking Alpaca Silk (50% alpaca, 50 % silk), 50 g ball

Beige, 507-1-1-2-2-2 balls
 Light pink, 565-1-1-1-1-1 ball
 Pink, 564-1-1-1-1-1-1 ball
 Brown, 518-1-1-1-1-1 ball

Needles size 3 mm – US 2 or 3 – UK/Canadian 11, crochet hook size 2 ½, mm – US – UK/Canadian + 4 buttons

Gauge: 25 sts = approx. 10 cm/4 in in width using needles size 3 mm. **Check your gauge to ensure success.**
 28 sc = approx. 10 cm/4 in using crochet hook size 2½ mm. **Check your gauge to ensure success.**

Crochet abbreviations: ch(-st) = chain stitch, sl st = slip stitch, sc = single crochet, dc= double crochet, ch-space = ch5, skip 4 sc, 1 sl st

Beg from lower edge of one leg. Using needles size 3 mm and beige yarn, cast on 60-64-69-74-79-85 sts. Work in rnds with stripes as foll:
 4 rnds with beige, 2 rnds with brown, 6 rnds with light pink, 2 rnds with beige, 3 rnds with pink, rep *-*.
 When work measures 6-7-8-9-10-11 cm/2.4-2.8-3.1-3.5-4-4.3 in, leave work aside and knit same for the other leg.
 Note! End with same stripe as the other leg.
 Slip both legs on same circular needle size 3 mm, with beg of rnds on inside of the legs.
 Knit 1 rnd, and adjust number of sts to be 120-128-140-148-156-168 sts. Place markers each side between 2 sts, and between 2 sts mid front and back = 30-32-35-37-39-42 sts for each part.

Cont working with stripes same as before. Dec 1 st both sides of markers mid front and back (= 4 sts on a rnd), rep dec every 2nd rnd altog. 5 times = 100-108-120-128-136-148 sts rem. When work measures 32-35-37-38-40-42 cm/12.6-13.8-14.6-15-15.7-16.5 in, or desired length,

measured from cast-on edge (end with a complete stripe), bind off 10-10-10-12-12-12 sts at each side (= 5-5-5-6-6-6 sts both sides of the markers).

Work back and front separately.

Front:

Cont working back and forth with beige yarn. When work measures 5-5-5-6-6-7 cm/2-2-2-2.4-2.4-2.8 in, measured from division, bind off all sts on RS-row.

Place markers both sides of 8-12-18-20-24-22 mid sts.

Crochet each part separately.

Crochet patt (see also chart)

Using crochet hook size 2½ mm and beige yarn, beg from right front: Insert hook to 1st st on right side of the marker, 1 sl st.

1st row: Ch3, skip 3 sts, 1 dc, *ch3, skip 3, 1 dc*, rep *-* across the row.

2nd row: (WS), ch5, skip (1st and 1 ch-st), 1 sc to next ch-st, ch2, skip 1 ch-st, *1 dc to dc, ch2, skip 1 ch-st, 1 sc to next ch-st, ch2, skip 1 ch-st*, rep *-* across the row, and end with 1 dc to 3rd ch-st.

3rd row: Ch5, skip (ch2, 1 sc, 2 ch-sts), *1 dc to dc, ch3, skip (2 ch-sts, 1 sc, 2 ch-sts)*, rep *-* across the row. End with 1 dc.

4th row: Same as 2nd row.

Rep rows 3 and 4 until armhole measures approx. 9-10-11-12-13-14 cm/3.5-4-4.3-4.7-5.1-5.5 in, end with 4th row.

Break yarn, and draw through the loop.

Left front: Work same as right front, but in rev (beg from WS, from neck edge).

Back.

Beg from right edge (RS), and crochet back and forth same as for fronts.

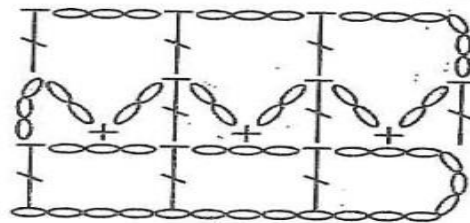
When back measures same as front, work 1 row dc over each shoulder, 1 dc to every st (= buttonband). Measure width of shoulders from fronts.

Finishing:

Sew crotch seam.

Weave in all ends on WS.

Sew on small buttons on each shoulder (back).



Viking Bjørk

Sweater with short sleeves 1410-11

Size : 2 - 4 - 6 yrs

Chest : 58 - 64 - 70 cm
22.8-25.2-27.6 in

Length : 32 - 35 - 42 cm
12.6-13.8-16.5 in

Sleeve length : 10 - 12 - 14 cm
4-4.7-5.5 in

Alternative yarns: Viking Bjørk (90% cotton , 10 % merino wool, superwash) , Viking Alpaca Silk (50 % alpaca , 50% silk), 50 g ball

Light Blue, 520 : 3 - 3 - 4 balls

Needles size 2½ and 3 mm – US 1 or 2 and 2 or 3 – UK/Canadian 13 or 12 and 11

Gauge: 25 sts = approx. 10 cm/4 in over St st using needles size 3 mm. **Check your gauge to ensure success.**

Using needles size 2½ mm, cast on 132 – 144 – 160 sts. Work in rnds 4 – 4 – 5 cm/1.6-1.6-2 in in K1,P1 rib. Change to needles size 3 mm. Work in patt I as charted, and inc evenly across 1st rnd number of sts to be 144 – 160 – 176 sts. Place markers each side, 73 – 81 – 89 sts for front, and 71 – 79 – 87 sts for back.

When work measures approx. 18 – 20 – 26 cm/7.1-7.9-10.2 in, work in patt II as charted. When work measures approx. 19 – 21 – 27 cm/7.5-8.3-10.6 in, bind off 6 sts at each side (3 sts both sides of the markers). Finish back and front separately.

Back : Cont working back and forth until work measures approx. 32 – 35 – 42 cm/12.6-13.8-16.5 in. Leave 37 – 39 – 41 mid sts on holder, and bind off 14 – 17 – 20 sts for each shoulder.

Front : Work same as for back. When work measures approx. 27 – 30 – 37 cm/10.6-11.8-14.6 in, leave 19 – 19 – 21 mid sts on holder. Finish each side separately. Bind off at neck edge every 2nd row 1x5 sts, 0 – 1 – 1x3 sts, 2 – 1 – 1x2 sts, and 1x1 st. When front measures same as back, bind off.

Work same for the other side, rev all shaping.

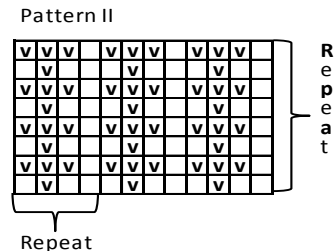
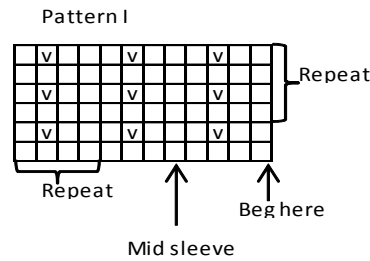
Sleeves

Using needles size 2 ½ mm, cast on 64 – 70 – 74 sts. Work in rnds 3 cm/1.2 in in K1,P1 rib. Change to needles size 3 mm. Work in patt I as charted. When work measures 9 – 11 – 13 cm/3.5-4.3-5.1 in, divide work at beg of rnd. Cont working back and forth until sleeve measures 10 – 12 – 14 cm/4-4.7-5.5 in. Bind off.

Finishing: Join shoulder seams

Neck band: Using needles size 2½ mm, knit up approx. 80 – 84 – 92 sts. Work 1 rnd in St st, and then in K1,P1 rib until neck band measures 5 – 6 – 6 cm/2-2.4-2.4 in. Bind off rather loosely in rib. Fold neck band in double, and sew on WS.

Sew on sleeves.



□ = Knit on RS, purl on WS
 ▣ = Purl in RS, knit on WS

Viking Bjørk

Sweater and shorts

1410-12

Size:	9/12-18 months-2/3 yrs
Chest:	53-58-62 cm 20.9-22.8-24.4 in
Length:	28-33-38 cm 11-13-15 in
Sleeve length:	6-8-9 cm 2.4-3.1-3.5 in
Hips:	48-49-50 cm 18.9-19.3-19.7 in

ALTERNATIVE YARNS: Viking Bjørk (90 % cotton, 10% merino wool), Viking Alpaca Silk (50% alpaca, 50 % silk), 50 g ball

Sweater

Beige, 507: 3-3-3 balls

White, 500: 1-1-1 ball

Turquoise, 529: 1-1-1 ball

Blue, 523: 1-1-1 ball

Navy Blue, 526: 1-1-1 ball

Black, 503: 1-1-1 ball

Red, 550: 1-1-1 ball

Pants

Beige, 507:-3-3-3 balls

Blue, 523:-1-1-1 ball (or rest yarn from sweater)

Navy Blue, 526:-1-1-1 ball (or rest yarn from sweater)

Needles size 3 mm – US 2 or 3 – UK/Canadian 11
+ 1 button + elastic

Gauge: 25 sts = approx. 10 cm/4 in in width with needles size 3 mm. **Check your gauge to ensure success.**

SWEATER

Using needles size 2½ mm and beige yarn, cast on 132-144-156 sts. Work in rnds 3-4-4 cm/1.2-1.6-1.6 in in St st, purl 1 rnd = folding edge, and 3-4-4 cm/1.2-1.6-1.6 in in St st. Change to needles size 3 mm. Cont working in St st. Place markers each side, 67-73-79 sts for front, and 65-71-77 sts for back. When work measures 16-20-24 cm/ 6.3-7.9-9.4in, measured from folding edge, bind off 6 sts on each side for armholes = 3 sts both sides of the markers. Leave work aside, and knit sleeves.

Sleeves

Using needles size 2½ mm and beige yarn, cast on 48-54-60 sts. Work in rnds 3-4-4 cm/1.2-1.6-1.6 in in St st, purl 1 rnd, and 3-4-4 cm/1.2-1.6-1.6 in in St st. Change to needles size 3 mm. Work 3-4-5 cm/1.2-1.6-2 in in St st. Bind first and last 3 sts. Slip sts on holder, and knit same for the other sleeve.

Yoke

Slip sleeve sts over same circular needle as body = 204-228-252 sts. Work in rnds 0-1-2 cm/0-0.4-0.8 in in St st. Cont working in patt I as charted. Beg from back, from right shoulder, and check from mid back where to beg patt. Cont working in rnds. Dec as charted. Size 9/12 months: do not dec on 5th dec-rnd. Knit 1 rnd with beige yarn,

adjust number of sts to be 75-75-85 sts. Work in patt II as charted.

Change to needles size 2½ mm, and work for neck band. Work back and forth 2-3-3cm/0.8-1.2-1.2 in in St st with red yarn. Bind off rather loosely.

Finishing

Fold neck band in double, and sew on WS. Sew underarm seams.

Fold all edges in double, and sew on WS.

Crochet a buttonhole loop (= ch-sts) on neck band edge.

Sew on button.

SHORTS

Beg from lower edge of one edge.

Using needles size 2½ mm and beige yarn, cast on 74-78-84 sts.

Work in rnds 3-4-4 cm/1.2-1.6-1.6 in St st, purl 1 rnd = folding edge, and 3-4-4 cm/1.2-1.6-1.6 in in St st. Change to needles size 3 mm. Knit 1 rnd, and inc 1 st. Place a marker beg of rnd = inner seam, and rnd mid st = mid leg. Work in patt I as charted; **note: beg from 8th rnd** = navy blue stripe. Note: Check from mid st where to beg patt.

Work 15 rnds without dec. Cont working in St st with beige yarn until work measures 10-12-15cm/4-4.7-5.9 in, measured from folding edge. Work same for the other leg.

Knit sts from one leg over needles size 3 mm, cast on 8-8-8 new sts (= mid front), knit sts from the other leg on same circular needle and cast on 8-8-8- new sts (= mid back).

There is now 166-174-186 sts on a rnd. Cont working in St st over all sts, and dec as foll: work until 1 st rem from one leg, sl 1 st, K1, psso, K6-6-6, K2tog. Rep dec on the other side. Rep dec every rnd with 2 sts less between each dec

until all cast-on sts are decreased. Place markers mid front and back (= between 2 sts), and dec 1 st both sides of the markers (before a marker: K2togtbl; after a marker: K2tog) every 2nd rnd altog. 4 times = 134-142-154 sts. When work

measures 19-21-23-24 cm/ in, measured from crotch, place markers each side, 68-72-78 sts for back, and 66-70-76 sts for front. Work short rows for back: Beg from mid back,

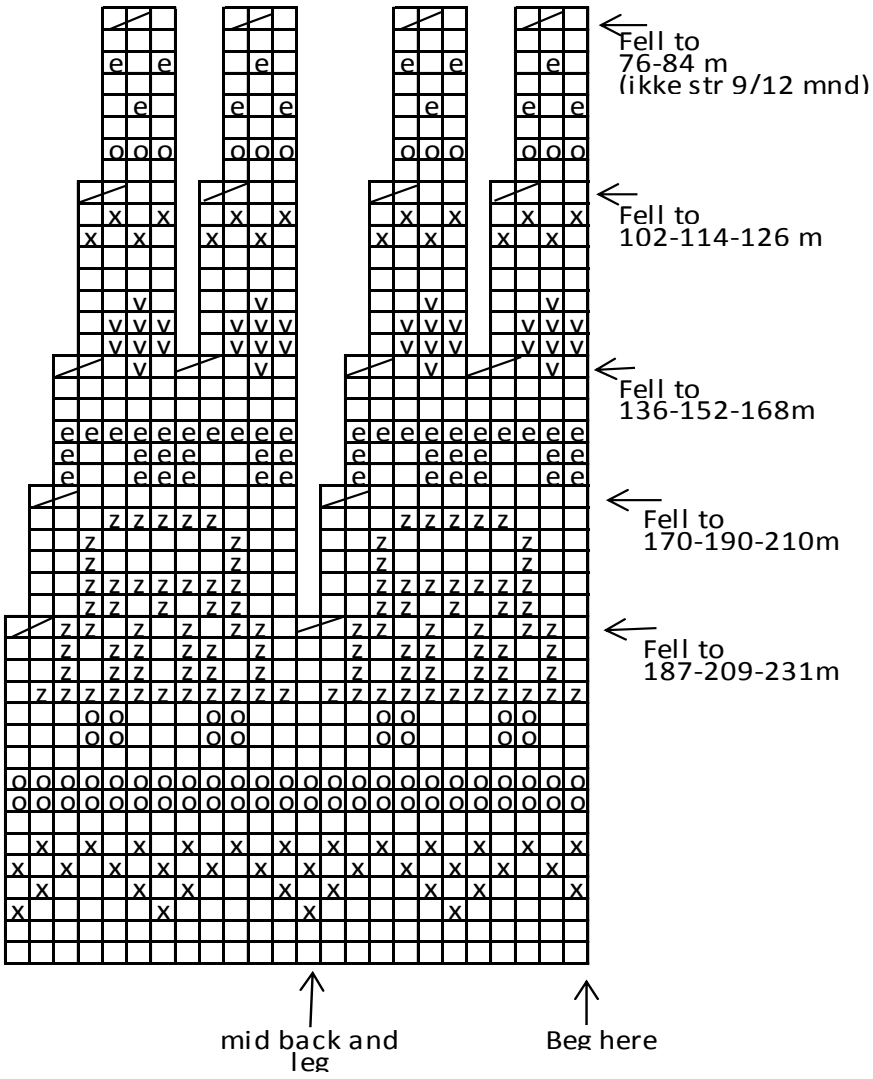
K6, turn, P12. Turn, K18. Turn, P24. Cont working in the same way, with 6 more sts each time altog. 10 times = 5 times at each side. Knit 1 rnd over all sts, and dec evenly

across number of sts to be 112-120-128 sts. Change to needles size 2 ½ mm. Work approx. 6 cm/2.4 in in K2,P2 rib. Bind off rather loosely in rib.

Fold rib in double, and sew on WS.

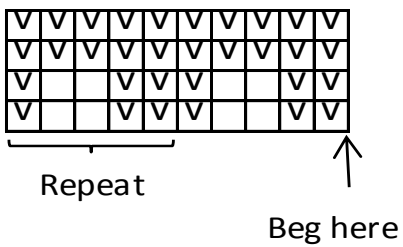
Sew crotch seam. Fold lower edges of legs in double, and sew on WS. Weave in all ends on WS. Thread elastic into waist casing.

PATTERN I



- = beige
- = turquoise
- = navy blue
- = blue
- = white
- = red
- = K2tog

Pattern II



Viking Bjørk

Sweater

1410-13

Size :	1 - 2 - 4 - 6 yrs
Chest:	53 - 58 - 62 - 67 cm 20.9-22.8-24.4-26.4 in
Length :	28 - 33 - 35 - 42 cm 11-13-13.8-16.5 in
Sleeve length :	8 - 8 - 8 - 9 cm 3.1-3.1-3.1-3.5 in

Alternative yarn: Viking Bjørk (90% cotton , 10 % merino wool, superwash) , Viking Alpaca Silk (50 % alpaca , 50% silk), 50 g ball

Navy Blue, 526 : 2-2-2-2 balls
White, 500 : 1-1-2-2 balls

Needles size 2½ and 3 mm – US 1 or 2 and 2 or 3 – UK/Canadian 13 or 12 and 11
+ 3 buttons

Gauge: 25 sts = approx. 10 cm/4 in over St st using needles size 3 mm. **Check your gauge to ensure success.**

Using needles size 2½ and navy blue yarn, cast on 120 – 132 – 144 – 156 sts. Work in rnds approx. 3 – 3 – 4 – 4 cm/1.2-1.2-1.6-1.6 in in K1,P1 rib. Change to needles size 3 mm. Work in St st, and inc evenly across 1st rnd number of sts to be 132 – 144 – 156 – 168 sts. Place markers each side, 67 – 73 – 79 – 85 sts for front, and 65 – 71 – 77 – 83 sts for back.

Work in stripes: 3 – 4 – 4 – 6 cm/1.2-1.6-1.6-2.4 in with white, 3 – 4 – 4 – 6 cm/1.2-1.6-1.6-2.4 in with navy blue, 1 ½ – 2 – 2 – 3 cm/0.6-0.8-0.8-1.2 in with white, and 1 ½ – 2 – 2 – 3 cm/0.6-0.8-0.8-1.2 in with navy blue. Work in patt I as charted, and after that in St st with white yarn until work measures approx. 17 – 20 – 21 – 27 cm/6.7-7.9-8.3-10.6 in. Bind off on last rnd 10 – 10 – 12 – 12 sts on each side (5 – 5 – 6 – 6 sts both sides of the markers).

Leave work aside, and knit the sleeves.

Sleeves : Using needles size 2½ mm and navy blue yarn, cast on 48 – 50 – 54 – 58 sts. Work in rnds approx. 2 – 2 – 3 – 3 cm/0.8-0.8-1.2-1.2 in in K1,P1 rib. Change to needles size 3 mm. Work in St st, and inc evenly across 1st rnd number of sts to be 51 – 55 – 61 – 65 sts. Work in patt I as charted, and after that in St st with white yarn until sleeve measures approx. 8 – 8 – 8 – 9 cm/3.1-3.1-3.1-3.5 in. Bind off on last rnd 10 – 10 – 12 – 12 sts mid under sleeve (5 – 5 – 6 – 6 sts both sides of the marker).

Leave work aside, and knit same for the other sleeve.

Yoke: Using white yarn, knit all pieces on same circular needle, sleeves over the bound-off sts for armholes = 194-214-230-250 sts on a rnd. Place markers at each 4 seamline, and beg raglan-dec: Work until 2 sts rem before 1st marker, K2tog, sl 1 st,K1,pss0. Rep dec at each 4 seamline every 2nd rnd. Divide work at right side of front (= seamline between front and sleeve) after 2 dec-rnds. Cont working back and forth (always dec on RS-row). Cast on 3 new sts to the end of row. Turn, and work Garter st over first 6 sts. Work Garter st over these sts all the time (= front band with buttonholes). Purl rem sts, and cast on 3

new sts to the end of the row. Work Garter st over 6 last sts (= front band for buttons). Cont working back and forth, and dec for raglan same as before. Rep raglan-dec also at each edge inside 6 Garter sts.

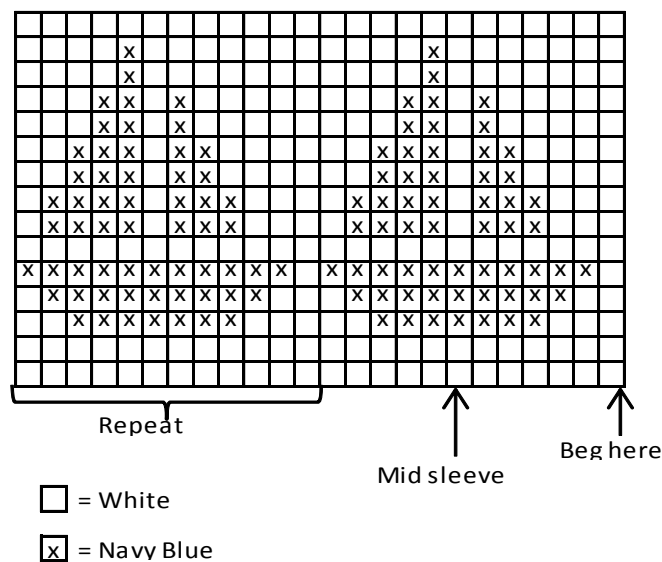
After 4 – 6 – 6 – 6 raglan-dec (Note! counted from first raglan-dec), make first buttonhole. Buttonhole, inside 2 sts from the edge: Bind off 2 sts. Next row: Cast on 2 sts over the bound-off sts. Make next buttonhole after 9 – 11 – 12 – 13 raglan-dec.

Change to navy blue after 12 – 13 – 14 – 15 raglan-dec.

Cont same as before until 88 – 92 – 92 – 96 sts rem on a row, and there is 14 – 16 – 18 – 20 raglan-dec. Make last buttonhole after last raglan-dec. Change to needles size 2½ mm and white yarn. Work 2 rows in St st, and after that approx. 2 cm/0.8 in in K1,P1 rib. Bind off in rib.

Finishing: Sew underarm seams. Place buttonhole band over buttonband, and sew the lower edge to the body. Sew on buttons.

Pattern I



Viking Bjørk

Dress

1410-14

Size:	1-2-3-4-6 yrs
Chest:	48-50-53-55-58 cm 18.9-19.7-20.9-21.7-22.8 in
Length:	44-48-52-56-60 cm 17.3-18.9-20.5-22-23.6 in
Sleeve length:	6-6-7-7-7 cm 2.4-2.4-2.8-2.8-2.8 in

ALTERNATIVE YARN: Viking Bjørk (90% cotton, 10% merino, superwash), Viking Alpaca Silk (50% alpaca, 50% silk), 50 g ball

Navy Blue, 526 :	3-3-4-4-5 balls
White, 500 :	1-2-2-2-3 balls
Red, 550 :	1-1-1-1-1 ball

Needles size 2½ and 3 mm – US 1 or 2 and 2 or 3 – UK/Canadian 13 or 12 and 11
Crochet hook 3 mm – US C/2 or D/3 – UK/Canadian 11 + 3 small buttons

Gauge: 25 sts = approx. 10 cm/4 in over St st using needles size 3 mm. **Check your gauge to ensure success.**

Using needles size 2½ mm and white yarn, cast on 240-252-264-276-288 sts. Work back and forth 16 rnds in Garter st. Change to needles size 3 mm. Cont working in patt I as charted. When patt I is ready, cont working in St st with navy blue yarn until work measures approx. 30-33-36-39-41 cm/11.8-13-14.2-15.4-16.1 in. Work 1rnd, and knit all sts tog in pairs across the rnd = 120-126-132-138-144 sts on a rnd. Place markers each side, 61-63-67-69-73 sts for back, and 59-63-65-69-71 for front. Change to red yarn, and work 10 rnds in Garter st. Cont working in St st with white yarn until work measures approx. 35-39-42-45-48 cm/13.8-15.4-16.5-17.7-18.9 in. Bind off 6-6-8-8-8 sts at each side (3-3-4-4-4 sts both sides of the markers). Finish back and front separately.

Back : Cont working with white yarn. Bind off mid st for split, and finish each side separately. Bind off at armhole edge every 2nd row 1x2 sts, and 1x1 st. Cont working until work measures 44-48-52-56-60 cm/17.3-18.9-20.5-22-23.6 in, and armhole measures approx. 9-9-10-11-12 cm/3.5-3.5-4-4.3-4.5 in. Bind off. Work same for the other side, rev all shaping.

Front : Work same as for back, but without split. When work measures 3 cm/1.2 in less than total length, bind off mid 13-13-15-15-17 sts for neck edge. Finish each side separately. Bind off at neck edge every 2nd row 1x2 sts, and 1x1 st. When front measures same as back, bind off. Work same for the other side, rev all shaping.

Sleeves : Using needles size 2½ mm and white yarn, cast on 42-44-46-48-50 sts. Work 10 rnds in Garter st. Change to needles size 3 mm and red yarn. Work 3 rnds in St st, and inc evenly across 2nd rnd number of sts to be 46-46-50-56-60 sts. Place a marker mid under sleeve. Cont working in rnds in St st with navy blue yarn until sleeve measures approx. 6-6-7-7-7 cm/2.4-2.4-2.8-2.8-2.8 in. Bind off 6-6-8-8-8 sts mid under sleeve (3-3-4-4-4 sts both sides of the

marker). Cont working back and forth, and bind off at each edge every 2nd row 1x2 sts, and 1x1 st. Bind off rem sts.

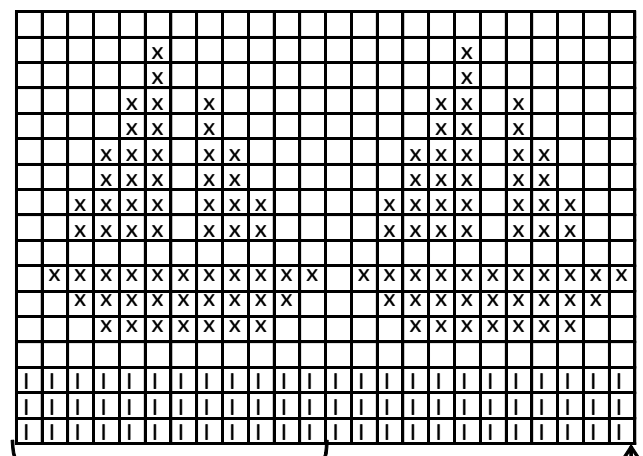
Work same for the other sleeve.

Finishing : Join shoulder seams (sew back and front sts tog, and leave mid back sts for neck edge). Weave in all ends on WS.

Neck band: Beg from mid back. Using needles size 2½ mm and red yarn, pick or knit up approx. 60-62-66-68-70 sts. Work back and forth 6 rows in Garter st. Bind off rather loosely.

Finishing : Using hook size 3 mm and white yarn, crochet sc-row to spilt edges. Make 3 buttonhole loops = fasten yarn with 1 sl st, ch3, skip 2 sts, and fasten with 1 sl st to next st. Make first buttonhole loop mid neck band, and 2 more buttonholes evenly spaced apart. Sew on 3 buttons. Weave in all ends on WS.

Pattern I



- = Navy Blue
- = White
- = Red

Viking Bjørk

Cardigan

1410-15

Size :	1-2-4-6 yrs
Chest :	57-62-66-71 cm 22.4-24.4-26-28 in
Length :	30-36-42-45 cm 11.8-14.2-16.5-17.7 in
Sleeve length :	24-28-31-34 cm 9.4-11-12.2-13.4 in

Alternative yarns: Viking Bjørk (90% cotton, 10 % merino wool, superwash) , Viking Alpaca Silk (50 % alpaca , 50% silk), 50 g ball

Navy Blue, 526 : 2-2-3-3 balls

Beige, 507 : 1-1-1-2 balls

Blue, 523 : 1-1-1-1 ball

White, 500 : 1-1-1-1 ball

Circular needle and double pointed needles size 2½ and 3 mm – US 1 or 2 and 2 or 3 – UK/Canadian 13 or 12 and 11 + 5 – 5 – 5 – 6 buttons

Gauge: 25 sts = approx. 10 cm/4 in over St st using needles size 3 mm. **Check your gauge to ensure success.**

Stripe pattern

Beige, navy blue, white with patt, blue, beige and navy blue

Each stripe measures approx. 5 – 6 – 7 – 7 ½ cm/2-2.4-2.8-3 in.

Using needles size 2½ mm and beige yarn, cast on 137 – 149 – 161 – 173 sts. Work back and forth approx. 5 – 6 – 7 – 7 ½ cm/2-2.4-2.8-3 in in K1,P1 rib. Change to needles size 3 mm and navy blue yarn. Place markers each side, 33 – 36 – 39 – 42 sts for both fronts, and 71 – 77 – 83 – 89 sts for back. When work measures approx. 10 – 12 – 14 – 15 cm/4-4.7-5.5-6.3 in (each stripe is approx. 5 – 6 – 7 – 7 ½ cm/2-2.4-2.8-3 in wide), change to white yarn, and work in patt as foll: Patt I as charted over 29 sts, patt II as charted over 18 – 24 – 30 – 36 sts, patt III as charted over 43 sts, patt II over 18 – 24 – 30 – 36 sts and patt IV over 29 sts. When patt is ready, cont working in St st with white yarn until stripe measures approx. 5 – 6 – 7 – 7 ½ cm/2-2.4-2.8-3 in. Change to blue yarn, and cont working in St st with stripes. When work measures approx. 18 – 22 – 27 – 29 cm/7.1-8.7-10.6-11.4 in, bind off 8 sts at each side for armholes (4 sts both sides of the markers). Finish first back.

Back : Cont working with stripes until work measures approx. 30 – 36 – 42 – 45 cm/11.8-14.2-16.5-17.7 in (end with a complete stripe), and armhole measures approx. 12 – 14 – 15 – 16 cm/4.7-5.5-5.9-6.3 in. Bind off.

Front : Work same as for back, and **same time** dec for V-neck : Dec 1 st inside 1 st approx. every 1 cm/0.4 in until 19 – 21 – 24 – 26 sts rem for shoulder, and front measures same as back. Bind off.

Work same for the other side, rev all shaping.

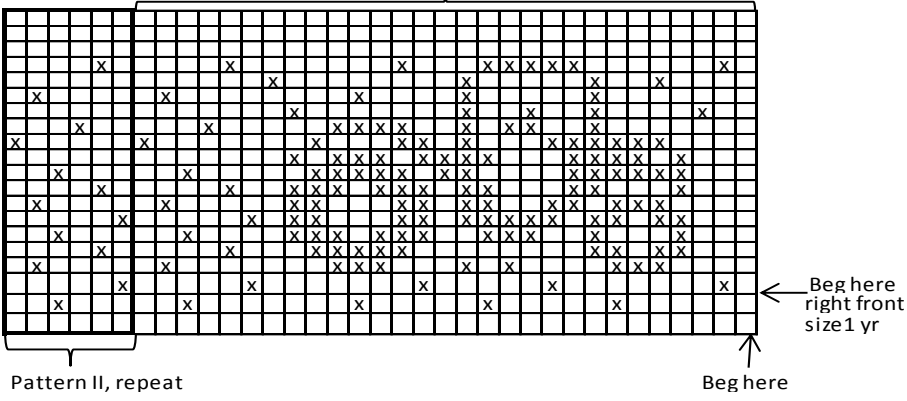
Sleeves : Using needles size 2½ mm and beige yarn. Cast on 34 – 36 – 38 – 40 sts. Work in rnds approx. 5 – 6 – 6 – 6 cm/2-2.4-2.4-2.4 in in K1,P1 rib. Change to needles size 3 mm, and navy blue yarn. Work in St st. Place a marker beg of rnd (= mid under sleeve). Inc 1 st both sides of the marker approx. every 1 cm/0.4 in until there is 60 – 70 – 74 – 80 sts on a rnd. When sleeve measures approx. 23 – 27 – 30 – 33 cm/9.1-10.6-11.8-13 in, divide sleeve mid underneath, and cont working back and forth. When sleeve measures approx. 24 – 28 – 31 – 34 cm/9.4-11-12.2-13.4 in, bind off.

Work same for the other sleeve.

Finishing: Join shoulder seams.

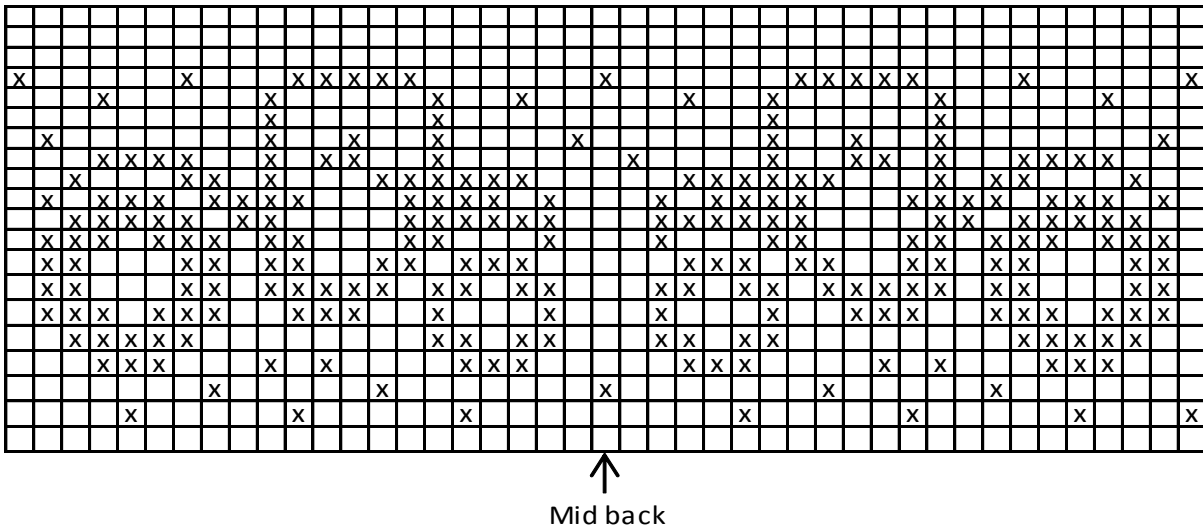
Neckband + front bands: Using needles size 2½ mm and blue yarn, knit or pick up approx. 75 – 90 – 105 – 112 sts along right front edge, 33 – 35 – 35 – 37 sts from neck edge, and approx. 75 – 90 – 105 – 112 sts along left front edge. Work 1 row in St st, and after that cont working in K1,P1 rib. When front band measures approx. 1½ cm/0.6 in, make 5 – 5 – 5 – 6 buttonholes to left front band (Buttonhole: Bind off 2 sts. Next row: Cast on 2 sts over the bound-off sts). Make first buttonhole 4 sts inside lower edge, last just below first V-neck dec, and rest evenly spaced apart. Cont working until front and measures approx. 3 cm/1.2 in. Bind off in rib. Sew on sleeves.

Pattern I



- = White
- = Navy Blue

Pattern III



Pattern IV

