

Viking Bjørk

Overall

1409-1A

Size-1-3-6-9-12 months-2 yrs

Chest-40-43-47-51-55-60 cm

15.7-16.9-18.5-20.1-21.7-23.6 in

Length-40-43-46-49-52-55 cm

15.7-16.9-18.1-19.3-20.5-21.7 in

Leg length-5-6-7-8-9-10 cm

2-2.4-2.8-3.1-3.5-4 in

ALTERNATIVE YARNS: Viking Bjørk (90 % cotton, 10% merino wool), Viking Alpaca Silk (50% alpaca, 50 % silk), 50 g ball

Beige, 507-1-1-2-2-2 balls
Light pink, 565-1-1-1-1-1 ball
Pink, 564-1-1-1-1-1 ball
Brown, 518-1-1-1-1-1 ball

Needles size 3 mm – US 2 or 3 – UK/Canadian 11, crochet hook size 2 ½, mm – US – UK/Canadian + 4 buttons

Gauge: 25 sts = approx. 10 cm/4 in in width using needles size 3 mm. **Check your gauge to ensure success.**
28 sc = approx. 10 cm/4 in using crochet hook size 2½ mm.
Check your gauge to ensure success.

Crochet abbreviations: ch(-st) = chain stitch, sl st = slip stitch, sc = single crochet, dc= double crochet, ch-space = ch5, skip 4 sc, 1 sl st

Beg from lower edge of one leg. Using needles size 3 mm and beige yarn, cast on 60-64-69-74-79-85 sts. Work in rnds with stripes as foll:
4 rnds with beige, 2 rnds with brown, 6 rnds with light pink, 2 rnds with beige, 3 rnds with pink, rep *-*.
When work measures 6-7-8-9-10-11 cm/2.4-2.8-3.1-3.5-4-4.3 in, leave work aside and knit same for the other leg. Note! End with same stripe as the other leg.
Slip both legs on same circular needle size 3 mm, with beg of rnds on innerside of the legs.
Knit 1 rnd, and adjust number of sts to be 120-128-140-148-156-168 sts. Place markers each side between 2 sts, and between 2 sts mid front and back = 30-32-35-37-39-42 sts for each part.
Cont working with stripes same as before. Dec 1 st both sides of markers mid front and back (= 4 sts on a rnd), rep dec every 2nd rnd altog. 5 times = 100-108-120-128-136-148 sts rem. When work measures 32-35-37-38-40-42 cm/ 12.6-13.8-14.6-15-15.7-16.5 in, or desired length, measured from cast-on edge (end with a complete stripe), bind off 10-10-10-12-12-12 sts at each side (= 5-5-5-6-6-6 sts both sides of the markers).
Work back and front separately.

Front:

Cont working back and forth with beige yarn. When work measures 5-5-5-6-6-7 cm/2-2-2-2.4-2.4-2.8 in, measured from division, bind off all sts on RS-row.
Place markers both sides of 8-12-18-20-24-22 mid sts. Crochet each part separately.

Crochet patt (see also chart)

Using crochet hook size 2½ mm and beige yarn, beg from right front: Insert hook to 1st st on right side of the marker, 1 sl st.
1st row: Ch3, skip 3 sts, 1 dc, *ch3, skip 3, 1 dc*, rep *-* across the row.

2nd row: (WS), ch5, skip (1st and 1 ch-st), 1 sc to next ch-st, ch2, skip 1 ch-st, *1 dc to dc, ch2, skip 1 ch-st, 1 sc to next ch-st, ch2, skip 1 ch-st*, rep *-* across the row, and end with 1 dc to 3rd ch-st.

3rd row: Ch5, skip (ch2, 1 sc, 2 ch-sts), *1 dc to dc, ch3, skip (2 ch-sts, 1 sc, 2 ch-sts)*, rep *-* across the row. End with 1 dc.

4th row: Same as 2nd row.

Rep rows 3 and 4 until armhole measures approx. 9-10-11-12-13-14 cm/3.5-4-4.3-4.7-5.1-5.5 in, end with 4th row. Break yarn, and draw through the loop.

Left front: Work same as right front, but in rev (beg from WS, from neck edge).

Back.

Beg from right edge (RS), and crochet back and forth same as for fronts.

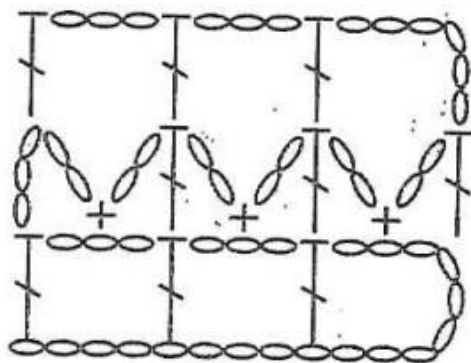
When back measures same as front, work 1 row dc over each shoulder, 1 dc to every st (= buttonband). Measure width of shoulders from fronts.

Finishing:

Sew crotch seam.

Weave in all ends on WS.

Sew on small buttons on each shoulder (back).



Viking Bjørk

Overall

1409-1B

Size-1-3-6-9-12 months-2 yrs

Chest-40-43-47-51-55-60 cm

15.7-16.9-18.5-20.1-21.7-23.6 in

Length-40-43-46-49-52-55 cm

15.7-16.9-18.1-19.3-20.5-21.7 in

Leg length-5-6-7-8-9-10 cm

2-2.4-2.8-3.1-3.5-4 in

ALTERNATIVE YARNS: Viking Bjørk (90 % cotton, 10% merino wool), Viking Alpaca Silk (50% alpaca, 50 % silk), 50 g ball

Beige, 507:-2-3-3-3-4-4 balls

Off-White, 502:-1-1-1-1-1-1 ball

Needles size 3 mm – US 2 or 3 – UK/Canadian 11, crochet hook size 2 ½ mm – US B/1 or C/2 – UK 12
+ 4 buttons

Gauge: 25 sts = approx. 10 cm/4 in in width using needles size 3 mm. **Check your gauge to ensure success.**

28 sc = approx. 10 cm/4 in in width using crochet hook size 2½ mm. **Check your gauge to ensure success.**

Crochet abbreviations: ch(-st) = chain stitch, sl st = slip st, sc = single crochet, dc = double crochet, ch-space = ch5, skip 4 sc, 1 sl st

Beg from lower edge of one leg. Using needles size 3 mm and beige yarn, cast on 60-64-69-74-79-85 sts. Work in rnds in St st until work measures 5-6-7-8-9-10 cm/2-2.4-2.8-3.1-3.5-4 in.

Leave work aside, and knit same for the other leg.

Slip legs on same circular needle size 3 mm, beg of rnds on innerside of the legs. Cont working in St st, and adjust on 1st rnd number of sts to be 120-128-136-148-156-168 sts. Place markers between 2 sts at each side, and between 2 sts mid front and back = 30-32-34-37-39-42 sts for each part.

Cont working same as before, but dec as foll: Knit until 2 sts rem before mid front marker, sl 1 st, K1, psso, K2tog. Rep dec mid back (= 4 sts on a rnd). Rep dec every 2nd rnd altog 5 times = 100-108-116-128-136-148 sts rem. When work measures 31-33-35-37-39-41 cm/12.2-13-13.8-14.6-15.4-16.1 in, or desired length, measured from cast-on edge. Bind off 10-10-10-12-12-12 sts at each side (= 5-5-5-6-6-6 sts both sides of the markers).

Finish front and back separately.

Front:

Cont working back and forth. When work measures 5-5-5-6-6-7 cm/2-2-2-2.4-2.4-2.8 in from division, bind off all sts on RS-row. Place markers both sides of 8-12-16-20-24-22 mid sts. Crochet each side separately.

Crochet pattern (see also chart)

Using crochet hook size 2½ mm and beige yarn, beg from right front: Insert hook to 1st st on right side of the marker, 1 sl st.

1st row: Ch, skip 3 sts, 1 dc, *ch3, skip 3, 1 dc*, rep *-* across the row.

2nd row: (WS), ch5, skip (1st dc and 1 ch-st), 1 sc to next ch-st, ch2, skip 1 ch-st, *1 dc to dc, ch2, skip 1 ch-st, 1 sc to next ch-st, ch2, skip 1 ch-st*, rep *-* across the row, end with 1 dc to 3rd ch-st.

3rd row: Ch5, skip (2 ch-sts, 1 sc, 2 ch-sts), *1 dc to dc, ch3, skip (2 ch-sts, 1 sc, ch2)*, rep *-* across the row. End with 1 dc.

4th row: Same as 2nd row.

Cont rep rows 3 and 4 until armhole measures approx. 9-10-11-12-13-14 cm/3.5-4-4.3-4.7-5.1-5.5 in, end with 4th row. Break yarn, and draw through the loop.

Left front: Work same as for right front, but in reverse (beg from WS at neck edge).

Back

Work same as for front until work measures 5-5-5-6-6-7 cm/2-2-2-2.4-2.4-2.8 in. Bind off.

Using hook size 2½ mm and beige yarn, crochet as foll: Beg from right side (RS). Crochet back and forth rows 3 and 4 (both edges must be identical).

Cont working until back measures same as front. Work 1 dc-row on each shoulder for buttons (measure width from front).

Finishing:

Sew crotch seam.

Weave in all ends on WS.

Sew 2 small buttons on each shoulder.

Borders around legs:

Using crochet hook size 2½ mm and white yarn, crochet as foll: Beg from inner seam.

1st rnd: Insert hook to 1st st, 1 sl st, ch1, 1 sc to approx. every 2nd st across the rnd. Note! Number of sts must be multiple with 4 + 1 sts.

2nd rnd: Ch1, *skip 1 sc, 5 dc to next sc, skip 1 sc, 1 sc to next sc*, rep *-* across the rnd, end with 1 sc to 1st ch-st. Break yarn, and draw through the loop.

Pockets:

Using crochet hook size 2 ½ mm and white yarn, ch15-15-17-17-19-19. Turn, 1 dc to 4th st from hook, 1 dc to every ch-st. Turn, ch3 = 1st dc, 1 dc to every st. Rep last row until work measures approx. 5-5-6-6-7-7 cm/2-2-2.4-2.4-2.8-2.8 in. Break yarn, and draw through the loop.

Work same for the other pocket.

Sew pocket approx. 4 cm/1.6 in from sides, 3 cm/1.2 in above last dec mid front.

CROCHET HAT

Beg from top. Using crochet hook size 2½ mm and beige yarn, ch4, and join into a ring with 1 sl st.

1st rnd: Ch3 = 1st dc, 11 dc into ring, end with 1 sl st to 3rd ch-st beg of rnd = 12 sts.

2nd rnd: Ch3+ 1 dc to first st, 2 dc to every st across the rnd, end with 1 sl st to 3rd ch-st beg of rnd = 24 sts.

3rd rnd: Ch3 + 1 dc to first st, 2 dc to every second st across the rnd = 36 sts.

Rep inc every rnd, 12 more sts each time, with 1 dc more between inc each time, until there is 84-84-96-96-96-108 sts on a rnd. Cont working in dc-rnds until work measures 12-13-13-14-14-15 cm/ in.

Border:

Change to off-white yarn.

Crochet approx. 17-17-19-19-19-21 ch-spaces across the rnd (= 5 lm, skip 4 dc, 1 sl st).

1st rnd: Ch1, * 5 dc into a ch-space, 1 sl st to next sl st *, rep *-* across the rnd.

2nd rnd: *Ch5, 1 sl st to 3rd dc, ch5, 1 sl st to next sl st*, rep *-* across the rnd.

3rd rnd: Ch1, * 5 dc into a ch-space, 1 sl st to next sl st *, rep *-* across the rnd.

Break yarn, draw through the loop.

Weave in all ends on WS.

Viking Bjørk

Dress

1409-3

Size: -1-2-4-6 yrs

Chest: -47-53-59-62 cm

18.5-20.9-23.2-24.4 in

Length: -45-48-52-57 cm

17.7-18.9-20.5-22.4 in

Sleeve length: 5-6-7-8 cm

2-2.4-2.8-3.1 in

ALTERNATIVE YARN: Viking Bjørk (90 % cotton, 10% merino wool), Viking Alpaca Silk (50% alpaca, 50 % silk), 50 g ball

Light Pink, 565:-5-6-6-7 balls

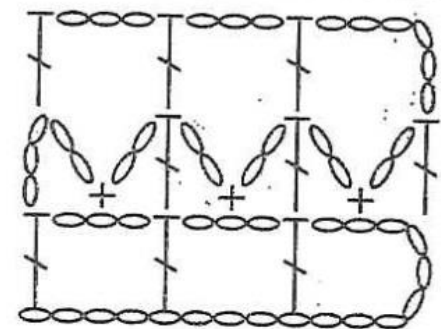
White, 500:-1-1-1-1 ball

Circular needle size 3 mm – US 2 or 3 – UK/Canadian 11.

Crochet hook size 3 mm – US C/2 or D/3 – UK/Canadian 11

Gauge: 25 sts = approx. 10 cm/4 in in width using needles size 3mm. **Check your gauge to ensure success.**

25 sc = approx. 10 cm/4 in in width using crochet hook size 3 mm. **Check your gauge to ensure success.**



Viking Bjørk

Hat

1409-2

Size: 3/6 months - 1-2-4 yrs

ALTERNATIVE YARNS: Viking Bjørk (90 % cotton, 10% merino wool), Viking Alpaca Silk (50% alpaca, 50 % silk), 50 g ball

Light Pink, 565:-1-1-1-1 ball

Circular needle size 2 ½ and 3 mm – US 1or 2 and 2 or 3 – UK/Canadian 13 or 12 and 11. White silk ribbon, approx 1 m/39.4 in

Gauge: 25 sts = approx. 10 cm/4 in in width using needles size 3 mm. **Check your gauge to ensure success.**

Using needles size 3 mm and light pink yarn, cast on 264-276-300-312 sts. *K5, P1*, rep *-* across the rnd. Cont working as established, **but** dec 1 st beg and end of each knit panel (= K2tog before and after each purl-st across the rnd), rep dec every 6-6-7-7 rnd, 2 times = 88-92-100-104 sts. K1 rnd, + 1 eyelet rnd = *1 yo, K2tog*, rep *-* across the rnd. Cont working in St st. When work measures 12-13-14-15 cm/4.7-5.1-5.5-5.9 in, measured from last dec-rnd, knit 1 rnd and adjust number of sts to be 88-88-96-104 sts. Beg dec for crown: *K6, K2tog*, rep *-* across the rnd. Knit 1 rnd without dec. *K5, K2tog*, rep *-* across the rnd. Knit 1 rnd without dec. Rep dec every 2nd rnd with 1 st less between each dec until 22-22-24-26 sts rem. Knit all sts tog in pairs. Break yarn, thread through rem sts, tighten the yarn, and weave in on WS. Weave in all ends on WS. Thread a silk ribbon through eyelet rnd, and tie into a bow.

Abbreviations:

ch(-st) = chain stitch

sl st = slip stitch

sc = single crochet

hdc = half double crochet

dc = double crochet

tr = treble

Crochet patt:

1st row: Ch4 = 1 dc + ch1, skip 1 st, 1 dc to next st

skip 1 st, ch 1 + 1 dc to next st, rep *-* across the row (end with 1 sl st to 3rd ch-st when worked in rnds)

2nd row: Ch3 = 1st dc, 1 dc to every st across the rnd

(end with 1 sl st to 3rd ch-st when working in rnds)

3rd row: same as 2nd row

4th row: Ch1 = 1st sc, 1 sc to every st across the rnd (end with 1 sl st to 1st ch-st when working in rnds)

5th row: Ch5 = 1 tr + ch1, *skip 1 st, ch1 + 1 tr to next st*, rep *-* across the rnd (end with 1 sl st to 4th ch-st when working in rnds)

6th row: Rep 4th row

7th and 8th row: Rep 2nd row

9th row: Rep 4th row

Rep these 9 rows

DRESS

Using needles size 2½ mm and white yarn, cast on 234-260-286-312 sts. Work in rnds 2 cm/0.8 in in St st. Work an eyelet rnd: *1 yo + K2tog*, rep *-* across the rnd = folding edge. Knit 1 rnd. Change to light pink yarn, and work 2 cm/0.8 in St st. Change to needles size 3 mm. Cont working in patt I as charted. When patt I is ready, work in St st until work measures 30-30-33-36 cm/11.8-11.8-13-14.2 in. Dec evenly across next rnd number of sts to be 118-132-148-156 sts. Knit 1 rnd. Bind off.

Yoke

Place markers at each side, 59-65-73-77 sts for back, and 59-67-75-79 sts for front (sizes 1 and 4 beg dog patt 6 sts inside the edge).

Cont crocheting as foll: Insert hook to 1st st, 1 sl st. 1 sc to each st across the rnd. Cont working as charted. After 3-4-4-5 cm/1.2-

1.6-1.6-2 in, dec for armholes as foll:

Back

Crochet until 5 sts rem before side marker. Turn. Work until 5 sts rem before the other side marker. Turn, = armhole dec = 49-55-63-67 sts. Cont working back and forth until back measures 5-7-7-8 cm/2-2.8-2.8-3.1 in. Divide work mid back = split = 1 st. Finish each side separately. Cont working back and forth until work measures the given length, and armhole measures approx. 12-14-15-16 cm/4.7-5.5-5.9-6.3/ in. Break yarn, and draw through the loop.

Front:

Work same as for back, but without split. When armhole measures approx. 9-10-11-11 cm/3.5-4-4.3-4.3 in, place markers both sides of mid 13-17-21-25 sts for neck edge. Finish each side separately.

Left front: Work back and forth in crochet patt, beg from marker. **Dec same time** at neck edge every 2nd row: 1-1-1-1x3 sl sts, 1-1-2-1x2 sl sts, and 1-2-1-2x1 sl st = 12-13-14-15 sts rem for shoulder. Cont working until front measures same as back. Break yarn, and draw through the loop.

Right front:

Work same as for left front, rev all shaping.

Finishing:

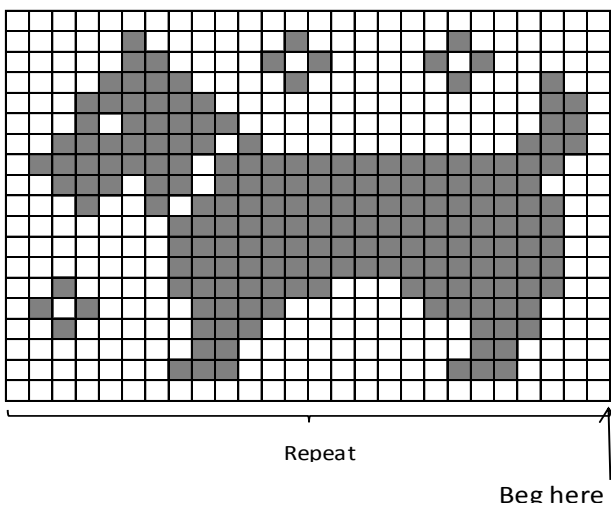
Sew shoulder seams.

Sleeves:

Using needles size 3 mm and light pink yarn, pick or knit up approx. 69-79-85-91 sts around the armhole. Place markers, beg of rnd = mid under sleeve, and both sides of 19-23- 25- 27 mid shoulder sts. Work in rnds in St st. Inc evenly across 1st rnd over mid shoulder sts 10—12-14-16 sts (= for puffing). When work measures 5-6-7-8 cm/2-2.4-2.8-3.1 in, dec 1 st both sides of the marker mid under sleeve. Rep dec approx. every 1 cm/ in. Knit 1 rnd, and dec evenly across number of sts to be 53-63-67-73 sts. Change to needles size 2 ½ mm, and white yarn. Work 2 cm/0.8 in in St st. Knit an eyelet rnd (= folding edge) same as for body, and 2-3-3-4 cm/0.8-1.2-1.2-1.6 in in St st. Bind off rather loosely.

Fold lower edges of sleeves and body in double, and sew on WS. Weave in all ends on WS.

PATTERN I



□ = light pink
■ = white

Viking Bjørk

Overall, hat and booties

1409-4

Size: -0/1-3-6-9 months

Chest: 44-46-50-52 cm

7.3-18.1-19.7 -20.5 in

Length: 45 -50-55 -60 cm

17.7-19.7 -21.7-23.6 in

Sleeve length: - 13 -15 -17- 19 cm

5.1-5.9-6.7-7.5 in

Leg length: -15 -17-19 -21 cm

5.9 - 6.7-7.5- 8.3 in

ALTERNATIVE YARN: Viking Bjørk (90% cotton, 10% merino wool), Viking Alpaca Silk (50% alpaca , 50% silk), 50 g ball

Overall

Light Pink, 565 :-4-5-5-6 balls

Hat and socks

Light Pink, 565 : -1-1-1-1 ball

Circular needle and double pointed needles size 2 ½ and 3 mm – US 1 or 2 and 2 or 3 – UK/Canadian 13 or 12 and 11 + 7 – 7 – 8 – 9 buttons

Gauge: 25 sts = approx. 10 cm/4 in over St st using needles size 3 mm. **Check your gauge to ensure success.**

Pattern A, Bubble patt:

Rows 1-5 : St st (first row = purl).

Row 6 (always from RS) : St st over 2 sts, *count 5 sts downwards, insert tip of RH needle into the st, knit this st, and let 4 sts unravel (= loosen up the sts) = drop st, St st over 5 sts*, rep *-.* across the row, end with St st over 2 sts.

Rows 7-11 : St st.

Row 12 (always from RS) : St st over 5 sts, *count 5 sts downwards, insert tip of RH needle into the st, and let 4 sts unravel, St st over 5 sts*, rep *-.*.

Rep these 12 rows.

Beg from lower edge of one leg

Using needles size 2 ½ mm, cast on 60 – 69 – 69 – 78 sts. Work 10 rnds in Garter st. Next rnd: *K1, K2tog*, rep *-.* across the rnd = 40 – 46 – 46 – 52 sts rem on a rnd. Cont working in rnds approx. 2 cm/0.8 in in K1,P1 rib. Change to needles size 3 mm. Place a marker beg of rnd (= inner seam of the leg), and adjust number of sts on 1st rnd to be 41 – 47 – 47 – 53 sts. Work in patt A, (check that patt is the same both sides of the marker),and inc **same time** 1 st both sides of the marker approx. every 1 – 1 – 1 – 1 ½ cm/0.4-0.4-0.4-0.6 in. Rep inc until there is 65 – 67 – 71 – 75 sts on a rnd, and leg measures approx.15 – 17 – 19 – 21 cm/5.9-6.7-7.5-8.3 in.

Leave work aside, and work same for the other leg.

Knit both legs on same circular needle size 3 mm. Knit sts from one leg, cast on 12 sts between the legs, knit sts from the other leg, cast on 12 sts = 154 – 158 – 166 – 174 sts on a rnd. Cont working in patt A same as before, and St st over the cast-on sts mid front and back. Beg dec: Work until 1 st rem from one leg, sl 1 st, K1,psso, St st over 10 sts, K2, rep dec for back. Rep dec every rnd, with 1 st less between dec each time. When all cast-on sts are dec, place markers mid front and back, and cont dec as foll: Work until 2 sts rem before mid front, K2, sl 1 st, K1, psso. Rep dec mid back. Cont working in patt A, and rep dec every 2nd rnd altog. 4 – 4 – 4 – 5 times, **but last dec mid back** for sizes 3 and 9 months: dec only 1 st, and sizes 0/1 and 6 months: dec 1 extra (this for cont the patt intact after last dec).

There is now 113 – 119 – 125 – 131 sts on a rnd. Place markers

mid front, and on sides, 28 – 30 – 31 – 33 sts for both fronts, and 57 – 59 – 63 – 65 sts for back. Divide work 3 sts before mid front marker. Cont working back and forth (make sure that patt is the same on both sides of the split, and that 6th row is RS). Cast on 6 new sts to the end of the row. Work in Garter st over first and last 6 sts, and cont working in patt A over rem sts. Make buttonholes on right front band, inside 2 sts from the edge. Buttonhole: Bind off 2 sts. Next row: Cast on 2 sts over the bound-off ones. Make first buttonhole after 2 – 5 – 4 – 2 cm/0.8-2-1.6-0.8 in, and after that approx. 4 cm/1.6 in spaced apart. When work measures approx. 36 – 40 – 44 – 48 cm/14.2-15.7-17.3-18.9 in, bind off 8 – 8 – 10 – 10 sts at each side for armholes (4 – 4 – 5 – 5 sts both sides of the markers). Check that 6th patt row will cont to be on RS.

Sleeves: Using needles size 2 ½ mm, cast on 48 – 51 – 54 – 60 sts. Work 10 rnds in Garter st. Next rnd: *K1, K2tog*, rep *-* across the rnd. There is now 32 – 34 – 36 – 40 sts on a rnd. Work in rnds approx. 2cm/0.8 in in K1,P1 rib. Change to needles size 3 mm. Place a marker beg of rnd (= inner side of the leg). Adjust the number off sts across first rnd to be 33 – 35 – 37 – 41 sts. Work in patt A (make sure that patt is the same both sides of the marker). Inc 1 st both sides of the marker approx. every 2 cm/0.8 in. Rep inc until there is 41 – 45 – 51 – 55 sts on a rnd, and sleeve measures approx. 13 – 15 – 17 – 19 cm/5.1-5.9-6.7-7.5 in. Bind off 8 – 8 – 10 – 10 sts mid under sleeve (4 – 4 – 5 – 5 sts both sides of the marker). Make sure that 6th patt rnd will be on RS, and that you end with same patt row as for body. Leave work aside, and knit same for the other sleeve.

Yoke: Slip all pieces on same circular needle size 3 mm, with sleeves over the bound-off sts for armholes (= 169 – 183 – 193 – 207 sts on a rnd). Place markers at all 4 seamlines. Cont working back and forth in patt 4, and Garter st over first and last 6 sts. Beg raglan-dec on RS as foll: Work until 2 sts rem before a marker, sl 1 st, K1, pssso, K2tog. Rep dec at each 4 seamline on every 4th rnd 3 times, and then every 2nd rnd until 73 – 79 – 81 – 87 sts rem. Change to needles size 2½ mm. Work in K1,P1 rib until neck band measures approx. 1 ½ cm/0.6 in (don't forget last buttonhole beg of neck band). Inc 1 st to every 2nd st = 109 – 118 – 121 – 130 sts. Work back and forth 10 rows in Garter st. Rills stretch out the neck band, so you can fasten a length of elastic on WS.

Finishing:

Sew underarm seams. Sew on buttons.

Pattern I :

1st row: K0-1-1-2, *K1, K2tog, K4, 1 yo, K3, 1 yo, K4, sl 1 st, K1, pssso *, rep *-* 5 times, and end with K1 – 2 – 2 – 3.
2nd row: Knit.

HAT

Using needles size 3 mm, cast on 81 – 83 – 83 – 85 sts. Work back and forth 2 rows in Garter st. Cont working in patt I, rep 4 times (= 5 rills).

Beg from RS, work 3 rows in St st, knit 1 row (= 1 rill), and 2 rows in St st.

Size 0/1 months: Dec evenly across last row number of sts to be 77 sts.

Size 9 months: Inc evenly across last row number of sts to be 89 sts.

All sizes: Cont working in patt A until work measures approx. 9 – 10 – 11 – 12 cm/3.5-4-4.3-4.7. Cont working in St st, and adjust number of sts to be 72 – 80 – 80 – 88 sts. Cont working in **rnds**, and dec as foll: *K2tog, K6*, rep *-* across the rnd. Work 2 rnds in St st. Rep dec every 3rd rnd, with 1 st less between each dec 2 times, and then every 2nd rnd until 9 – 10 – 10 – 11 sts rem.

Break yarn, and thread through rem sts.

Ruffled edge (worked into purl-row, front part of the hat, patt I)

Beg from RS. Using needles size 3 mm, pick or knit up 1 st from each st. Purl 1 row. Cont working in Garter st. Next row: Inc 1 st to **each** st across the row. Cont working back and forth until edge measures approx. 2 cm/0.8 in. Bind off rather loosely.

Neck band for hat: Beg from RS. Using needles size 2½ mm, pick or knit up approx. 49 – 53 – 53 – 57 sts. Work back and forth 6 rows in K1,P1 rib, **but** knit an eyelet row on 3rd row:

K2tog, 1 yo, rep *-* across the row (end with K1). Bind off in rib.

Sew both ends of ruffled edge along neck band.

BOOTIES

Beg mid under foot.

Using needles size 3 mm, cast on 30 – 34 – 38 – 42 sts. Knit 1 row. Place a marker, 15 – 17 – 19 – 21 sts on each side. Work in Garter st, and inc **same time** as foll: Inc 1 st into first st, inc 1st both sides of the marker = mid front, work until 2sts rem on needle, inc 1st into next st, K1. Knit 1 row. Next row: Inc 1 st into 2nd st, 1 st 2 sts before and after mid marker, knit until 3sts rem, inc 1 st into next st, K2. Rep inc in the same way until there is 4 – 4 – 5 – 6 sts both sides of the mid marker = 46-50-58-66 sts on a row. Work 4 rows in Garter st without inc over all sts.

Cont working in Garter st, and work as foll: K18 – 20 – 24 – 28, K2tog, 1 yo, sl 1 st, K1, pssso, K2, K2tog, 1 yo, sl 1 st, K1, pssso, K18 – 20 – 24 – 28. Turn, K17-19-23-27, sl 1 st, K1, pssso, K6, K2tog, knit rem sts. Rep dec in the same way on both rows, 1 st less beg and end of the row each time altog. 5 – 5 – 6 – 7 times. There is now 26 – 30 – 34 – 38 sts on a row. Work 10 – 10 – 12 – 12 rows in Garter st over all sts. Bind off. Sew mid back and sole seam.

Work same for the other bootie. Sew a length of elastic inside last 5-5-6-6 rills.

Twist 2 cords, length approx. 40 – 40 – 45 – 45 cm/15.7-15.7-17.7-17.7 in. Thread cords like shoelaces through the eyelets mid front.

Viking Bjørk

Blanket

1409-5

Size:

56 X 80 cm

22 X 31.5 in

ALTERNATIVE YARNS: Viking Bjørk (90% cotton, 10% merino wool), Viking Alpaca Silk (50% alpaca , 50% silk), 50 g ball

Light Pink, 565 :

6 balls

Needles size 3 mm – US 2 or 3 – UK/Canadian 11

Gauge: 25 sts = approx. 10 cm/4 in over St st using needles size 3 mm. **Check your gauge to ensure success.**

Using needles size 3 mm, cast on 140 sts. Work back and forth 10 rows in patt I. Cont working as foll: Patt I over 8 sts (= side band), patt II over next 124 sts, inc same time as charted, end with patt I over 8 sts (= side band). There is now 180 sts on a row. Cont working back and forth as established until work measures approx. 77 cm/30.3 in (end as charted, dec same time across last row as you inc across first row). Work back and forth 9 rows in patt I over all sts. Next row: Bind off sts, knit-sts knitwise and purl-sts purlwise.

Weave in all ends on WS.

Viking Bjørk

Dress and beret

1409-6

Size : 1-2-4 yrs

Waist: 48-52-56 cm

18.9-20.5-22 in

Length: 44-48-52 cm

17.3-18.9-20.5 in

Sleeve length : 11-12-12 cm

4.3-4.7-4.7 in

ALTERNATIVE YARN: Viking Bjørk (90% cotton, 10% merino wool), Viking Alpaca Silk (50% alpaca , 50% silk), 50 g ball

Pink, 564 : 5 – 6 – 7 balls

Off-White, 502 : 1 – 2 – 2 balls

Circular needle and double pointed needles size 2 ½ and 3 mm – US 1 or 2 and 2 or 3 – UK/Canadian 13 or 12 and 11 + 2 buttons, and elastic

Gauge: 25 sts = approx. 10 cm/4 in over St st using needles size 3 mm. **Check your gauge to ensure success.**

DRESS

Using needles size 2½ mm and pink yarn, cast on 160 – 170 – 180 sts. Work 4 rnds in Garter st. Change to needles size 3 mm. Work 1 rnd in St st, and inc evenly across number of sts to be 224 – 238 – 252 sts. Work in patt I. Cont working in St st, and inc evenly across 1st rnd number of sts to be 240 – 260 – 280 sts. When work measures approx. 25 – 28 – 31 cm/9.8-11-12.2 in, knit all sts tog in pairs across the rnd. There is now 120 – 130 – 140 sts on a rnd. Work 4 rnds in Garter st. Then 1 rnd in St st, and inc evenly across number of sts to be 168 – 182 – 196 sts. Cont working after that in patt I. Dec evenly across next rnd number of sts to be again 120 – 130 – 140 sts. Work 4 rnds in Garter st. Place markers each side, 60 – 64 – 70 sts for front, and 60 – 66 – 70 sts for back. Change to off-white yarn, and work in patt II.

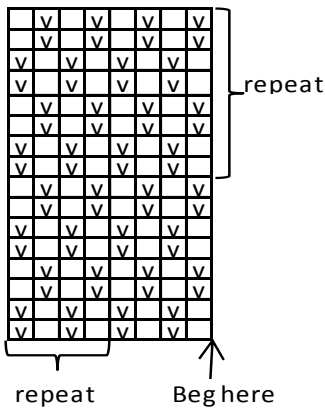
When patt II is ready, cont working in St st with off-white yarn. When work measures approx. 2 – 3 – 4 cm/0.8 – 1.2 – 1.6 in (measured from patt II), bind off 6 – 6 – 8 sts at each side for armholes (3 – 3 – 4 sts both sides of the markers). Finish back and front separately.

Back : Divide work mid back for split, 30 – 33 – 35 sts for both sides. Finish each side separately. Bind off at armhole edge every 2nd row 1x2 st, and 1x1 st. When work measures approx. 11 – 13 – 15 cm/4.3-5.1-5.9 in (measured from patt II), bind off. Work same for the other side, rev all shaping.

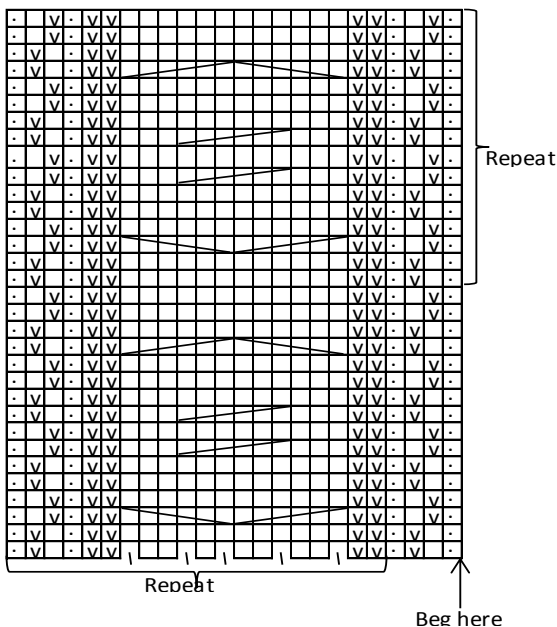
Front : Work same as for back, but without split. When work measures approx. 8 – 10 – 12 cm/3.1-4-4.7 in (measured from patt II), bind off 12 – 12 – 14 mid sts for neck edge. Finish each side separately. Bind off at neck edge every 2nd row 1x2 st, and 1x1 st. When front measures same as back, bind off. Work same for the other side, rev all shaping.

Sleeves : Using needles size 2½ mm and pink yarn, cast on 40-40-50 sts. Work 4 rnds in Garter st. Change to needles size 3 mm. Work 1 rnd in St st, and inc evenly across the rnd number of sts to be 56 – 56 – 70 sts. Place a marker mid under sleeve, and work in patt I. Next rnd: Dec evenly across the rnd number of sts to be 50 – 50 – 60 sts, and work in patt II, and after that St st with off-white yarn until sleeve measures 11-12-12 cm/4.3-4.7-4.7 in. Bind off 6 – 6 – 8 sts mid under sleeve, (3 – 3 – 4 sts both sides of the marker). Cont working back and forth, and bind off at each edge every 2nd row 1x2 sts, and 1x1 st. Bind off rem sts. Work same for the other sleeve.

Pattern I




Pattern II

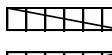


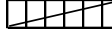
 = Purl on RS, knit on WS

 = Knit on RS, purl on WS

 = Ktbl on RS, ptbl on WS

 = inc 1

 = SI 3 sts on cn, hold to back, K3, knit sts from cn

 = SI 3 sts on cn, hold to front, K3, knit sts from cn

Finishing: Sew shoulder seams, 15 – 17 – 18 sts for each shoulder. Sew on sleeves.

Neck band: Beg mid back. Using needles size 2½ mm and off-white yarn, knit or pick up around neck edge approx. 56 – 60 – 64 sts. Work back and forth 4 rows in Garter st. Bind off.

Finishing : Using hook size 2 mm and off-white yarn, crochet along split edges sc-row. Make 2 buttonhole loops 5 sc spaced apart (= ch3, skip 2 sts, fasten to next st with 1 sl st). Make first buttonhole mid neck band. Sew on buttons. Weave in all ends on WS.

BERET

Using needles size 2½ mm and pink yarn, cast on 100 – 110 – 120 sts. Work in 4 rnds in Garter st. Change to needles size 3 mm. Work 1 rnd in St st, and inc evenly across the rnd number of sts to be 140 – 154 – 168 sts. Work in patt I. When patt I is ready, cont working in St st, and inc evenly across 1st row number of sts to be 200 – 210 – 220 sts. When work measures approx. 15 – 16 – 18 cm/ in, beg dec for crown: *K8, K2tog* rep *-* across the rnd. Work 2 rnds in St st. Rep dec every 3rd rnd with 1 st less between each dec 4 times, and then every 2nd rnd until 20-21-22 sts rem. Break yarn, thread through rem sts, tighten the yarn slightly, and weave in on WS. Sew lengths of elastic on inside of the beret, one to beg and one to end of Garter st edge.

Viking Bjørk

Sweater, pants and hat

1409-7

Size: 9 months-1-2-3-4 yrs

Chest: 51-56-60-63-66 cm

20.1-22-23.6-24.4-26 in

Length, sweater: 33-36-39-41-43 cm

13-14.2-15.4-16.1-16.9 in

Sleeve length: 20-22-24-26-28 cm

7.9-8.7-9.4-10.2-6.3-6.3 in

Hips: 53-56-59-62-64 cm

20.9-22-23.2-24.4-25.2 in

Leg length: 12-14-16-19-21 cm

4.7-5.5-6.3-7.5-8.3 in

ALTERNATIVE YARN: Viking Bjørk (90 % cotton, 10% merino wool), Viking Alpaca Silk (50% alpaca, 50 % silk), 50 g ball

Sweater

Beige, 507: 3-3-4-4-4 balls

Pants

Light Blue, 520: 2-3-3-3-4 balls

Hat

Light Blue, 520: 1-1-1-1-1 ball

Needles size 2 ½ and 3 mm – US 1 or 2 and 2 or 3 – UK/Canadian 13 or 12 and 11

+ 1 button and elastic for pants

Gauge: 25 sts = approx. 10 cm/4 in using needles size 3 mm.

Check your gauge to ensure success.

SWEATER

Back

Using needles size 3 mm and beige yarn, cast on 63-69-75-79-83 sts. Work back and forth in patt as foll:

1st row (= RS): Knit.

2nd row (= WS) : K1, P1.

Rep rows 1 and 2.

When work measures 28-31-34-35-37 cm/11-12.2-12.4-13.8-14.6 in, bind off mid st = split. Finish each side separately.

Cont working back and forth in patt until work measures 33-36-39-41-43 cm/13-14.2-15.4-16.1-16.9 in, or desired length. Bind off.

(For joining shoulders: Bind off first 18-19-20-21-22 sts, slip rem 13-15-17-18-19 sts on holder (= shoulder)

Work same for the other side.

Front

Work same as for back, but without split. When work measures same as back, bind off.

(For joining shoulders: Bind off 37-39-41-43-45 mid sts for neck edge, slip rem sts on holders).

Sleeves

Using needles size 2½ mm and beige yarn, cast on 40-44-48-52-54 sts. Work in rnds 3-3-4-4-4 cm/1.2-1.2-1.6-1.6-1.6 in in St st, purl 1 rnd = folding edge + 3-3-4-4-4 cm/1.2-1.2-1.6-1.6-1.6 in in St st. Change to needles size 3 mm. Cont working in St st.

Place a marker beg of rnd = mid under sleeve. Inc 1 st both sides of the marker every 2 cm/0.8 in. When work measures the given length, or as desired, measured from folding edge, bind off rather loosely.

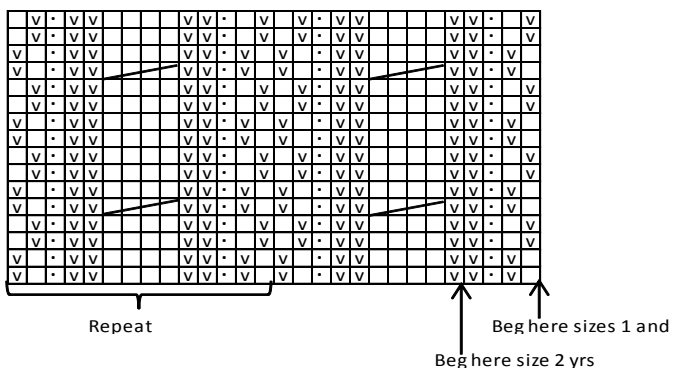
Finishing

Join shoulder seams. Sew side seams, leaving 12-13-14-15-16 cm/4.7-5.1-5.5-5.9-6.3 in for armholes.

Fold cast-on edge of sleeves in double, and sew on WS. Sew on sleeves.

Weave in all ends on WS.

Pattern I



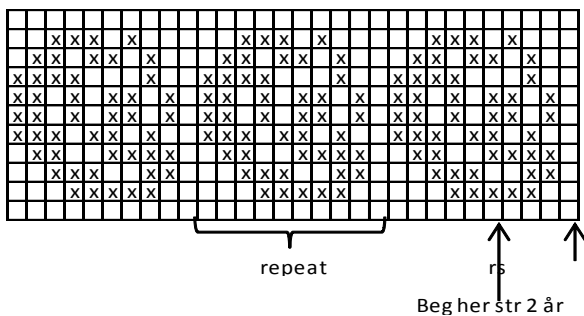
☐ = Purl on RS, knit on WS

☐ = Knit on RS, purl on WS

☐ = Ktbl on RS, ptbl on WS

☐ = Sl 2 sts on cn, hold to back, K2, knit sts from cn

Pattern II, rose



☐ = Off-white, knit

☒ = Pink, knit

Crochet a buttonhole loop (= ch-sts) to the upper edge of split.
Sew on a button.

PANTS

Beg from lower edge of a leg:

Using needles size 2½ mm and light blue yarn, cast on 64-68-72-76-78 sts.

Work in rnds 3-4-4-5-5- cm/1.2-1.6-1.6-2-2 in in St st, purl 1 rnd = folding edge, 3-4-4-5-5- cm/1.2-1.6-1.6-2-2 in in St st. Change to needles size 3 mm. Cont working in St st, and place a marker be of rnd = inner side of leg. Inc 1 st both sides of the marker every 2-2-3-3-4 cm/0.8-0.8-1.2-1.2-1.6 in until there is 74-78-82-86-88 sts on a rnd. When work measures 12-14-16-19-21 cm/4.7-5.5-6.3-7.5-8.3 in, measured from folding edge, leave work aside and knit the other leg.

Slip both legs on same circular needle size 3 mm = 148-156-164-172-176 sts. Place markers around mid sts front and back. Cont working in St st, and dec **same time** dec 1 st both sides of the markers every 2nd rnd altog. 4 times, before a marker: K2togtbl; after marker: K2tog, = 132-140-148-156-160 sts. Cont working until pants measure 19-21-22-23-24 cm/ in, measured from crotch. Place markers each side, 66-70-74-78-80 sts for both front and back. Work short rows for back: Beg from mid back, K6, turn, P12. Turn, K18. Turn, P24. Cont in the same way, working 6 more sts each time altog. 10 times = 5 times for each side. Knit 1 rnd over all sts, and dec evenly across number of sts to be 112-120-124-128-136 sts. Change to needles size 2½ mm. Cont working approx. 6 cm/2.4 in in K2,P2 rib. Bind off rather loosely in rib.

Fold rib in double, and sew on WS to form a casing.

Sew crotch seam. Fold cast-on edges of legs in double, and sew on WS. Weave in all ends on WS. Thread elastic to the waist.

HAT

Using needles size 2½ mm and light blue yarn, cast on 80-90-90-100-100 sts. Work in rnds 3-4-4-5-5 cm/1.2-1.6-1.6-2-2 in in St st, purl 1 rnd = folding edge + 3-4-4-5-5 cm/1.2-1.6-1.6-2-2 in in St st. Change to needles size 3 mm. Cont working in St st. When work measures 13-14-15-16-17 cm/5.1-5.5-5.9-6.3-6.7 in, measured from folding edge. Beg dec for crown: *K8, K2tog*, rep *-* across the rnd. Knit 1 rnd without dec. Next rnd: *K7, K2tog*, rep *-* across the rnd. Knit 1 rnd without dec. Rep dec every 2nd rnd with 1 st less between each dec until 16-18-18-20-20 sts rem. Knit all sts tog in pairs. Break yarn, thread through rem sts, tighten the yarn, and weave in on WS. Fold cast on edge in double, and sew on WS. Weave in all ends on WS.

Viking Bjørk

Cardigan, pants and hat

1409-8

Size : 1-3-6-9 months-1-2 yrs

Chest: 39-43-47-51-56-60 cm

15.4-16.9-18.5-20.1-22-23.6 in

Length: 21-23-25-28-30-36 cm

8.3-9.1-9.8-11-11.8-14.2 in

Sleeve length : 12-14-16-18-20-23 cm

4.7-5.5-6.3-7.1-7.9-9.1 in

Leg length : 15-17-19-21-23-28 cm

5.9-6.7-7.5-8.3-9.1-11 in

Circumference: 36-37-37-39-40-43 cm

14.2-14.6-14.6-15.4-15.7-16.9 in

ALTERNATIVE YARN: Viking Bjørk (90% cotton, 10% merino wool), Viking Alpaca Silk (50% alpaca , 50% silk), 50 g ball

Cardigan

Off-White, 502 : 1 -1 - 2 - 2 - 2 - 3 balls

Beige, 507 : 1 - 1 - 1 - 2 - 2 - 2 balls

Pants and hat

Beige, 507 : 2 - 3 - 3 - 4 - 4 - 5 balls

Whole set

Beige, 507 : 3 - 4 - 4 - 5 - 5 - 6 balls

Off-White, 502 : 1 -1 - 2 - 2 - 2 - 3 balls

Circular needle and double pointed needles size 2½ and 3 mm – US 1 or 2 and 2 or 3 – UK/Canadian 13 or 12 and 11 + 5 - 5 - 5 - 6 - 6 - 7 buttons + 1 elastic

Gauge: 25 sts = approx. 10 cm/4 in over St st using needles size 3 mm. **Check your gauge to ensure success.**

Pattern A, Bubble patt:

Rows 1-5 : St st (first row = purl).

Row 6 (always from RS) : St st over 2 sts, *count 5 sts downwards, insert tip of RH needle into the st, and let 4 sts unravel (= loosen up the sts) = drop st, St st over 5 sts*, rep *-* across the row, end with St st over 2 sts

Rows 7-11 : St st

Row 12 (always from RS) : St st over 5 sts, *count 5 sts downwards, insert tip of RH needle into the st, and let 4 sts unravel, St st over 5 sts*, rep *-* across the row.

Rep these 12 rows.

CARDIGAN

Using needles size 2½ mm and off-white yarn, cast on 104 – 114 – 124 – 134 – 146 – 156 sts. Work back and forth 10 rows in Garter st. Place markers each side, 48 – 54 – 58 – 64 – 70 – 74 sts for back, and 28 – 30 – 33 – 35 – 38 – 41 sts for each front. Change to needles size 3 mm. Work Garter st over first and last 6 sts, and St st over rem sts. Make buttonholes on right front, 2 sts inside edge. Buttonhole: Bind off 2 sts. Next row: Cast on 2 sts over the bound-off sts. Make first buttonhole on 1st row after Garter st edge, and rest approx. 5 – 5 – 5½ – 5½ – 5½ – 6 cm/2-2-2.2-2.2-2.2-2.4 in spaced apart.

When work measures approx. 13 – 14 – 15 – 17 – 18 – 23 cm/5.1-5.5-5.9-6.7-7.1-9.1 in, bind off 8 – 8 – 8 – 10 – 10 – 10 sts each side for armholes (4 – 4 – 4 – 5 – 5 – 5 sts both sides of the markers). Finish first back.

Back : Cont working back and forth in St st. Beg raglan-dec on RS-row as foll: K1 (knit every row = selvage st), K2, St st until 3 sts rem, sl 1 st, K1, pssso, K1 (= selvage st). Rep dec every 2nd row until 20 – 24 – 24 – 26 – 28 – 28 sts rem.

Left front : Work raglan-dec same as for back, and cont working in St st and Garter st over front edge sts.

Right front: Work same as for left front, but with buttonholes. Make last buttonhole on last row before neck band.

Sleeves: Using needles size 2½ mm and beige yarn, cast on 35 – 35 – 35 – 41 – 41 – 41 sts. Work 10 rnds in Garter st. Change to needles size 3 mm. Place a marker beg of rnd (= innerside of sleeve). Cont working in patt A, and inc **same time** 1 st both sides of the marker approx. every 4 - 2½ - 2 - 2½ - 2 - 1½ cm/1.6-1-0.8-1-0.8-0.6 in. Rep inc until there is 41 – 45 – 51 – 55 – 61 – 65 sts on a rnd, and sleeve measures approx. 12 – 14 – 16 – 18 – 20 – 23 cm/4.7-5.5-6.3-7.1-7.9-9.1 in.

Bind off 8 – 8 – 8 – 10 – 10 – 10 sts mid under sleeve (4 – 4 – 4 – 5 – 5 – 5 sts both sides of the marker). Make sure that 6th row is on RS. Cont working back and forth in Bubble patt, and beg **same time** raglan-dec same as for back. Rep dec until 13 – 15 – 17 – 17 – 19 – 19 sts rem on a row.

Leave work aside, and knit same for the other sleeve.

Finishing:

Sew all raglan-seams. Sew sleeve seams.

Neck band : Slip all sts on same circular needle size 2½ mm = 74 – 84 – 90 – 92 – 100 – 102 sts on a row. Using beige yarn, work 2 rows in Garter st. Change to off-white yarn. Work 2 rows in St st, and dec evenly across 2nd row number of sts to be 64 – 68 – 72 – 76 – 80 – 84 sts. Work back and forth approx. 1 ½ - 1 ½ - 2 - 2 - 2 - 2 cm/0.6-0.6-0.8-0.8-0.8-0.8 in in K1,P1 rib. Bind off in rib.

Pockets : Using needles size 2½ mm and beige yarn, cast on 21 sts. Work back and forth 2 rows in Garter st. Change to needles size 3 mm, and work as foll: 1 selvage st (= knit every row), patt A over 19 sts, 1 selvage st. When work measures approx. 8 cm/3.1 in (end with complete patt), change to needles size 2½ mm, and work 6 rows in Garter st. Bind off.

Work same for the other pocket.

Finishing : Sew on pockets approx. 1 cm/0.4 in above Garter st edge, and approx. 1 cm/0.4 in from front edges.

Sew on buttons.

PANTS

Beg from waist.

Using needles size 2½ mm and beige yarn, cast on 108 – 114 – 120 – 126 – 132 – 138 sts. Work in rnds approx. 2 cm/0.8 in in K1,P1 rib. Change to needles size 3 mm. Place markers each side, 53 – 57 – 59 – 63 – 65 – 69 sts for back, and 55 – 57 – 61 – 63 – 67 – 69 sts for front. Place markers also round mid sts front and back.

Beg from mid back marker. K6 – 8 – 9 – 8 – 9 – 8, turn, P11 – 15 – 17 – 15 – 17 – 15. Turn, work 7 – 7 – 7 – 8 – 8 – 9 sts more each time until you reach both side markers. Cont working in rnds in patt A over all sts. When work measures approx. 14 – 15 – 17 – 19 – 21 – 22 cm/ in (measured mid front), **inc** 1 st both sides of the markers mid front and back every 2nd rnd altog. 6 times. There is now 132 – 138 – 144 – 150 – 156 – 162 sts on a rnd.

Leg: Work sts from mid front until mid back = 66 – 69 – 72 – 75 – 78 – 81 sts on a rnd. Cont working in rnds in patt. Place a marker beg of rnd = innerside of leg. Dec 1 st both sides of the marker approx. every 1 – 1 – 1 ½ – 1 ½ – 2 – 2 ½ cm/0.4-0.4-0.6-0.6-0.8-1 in until there is 46 – 47 – 52 – 55 – 60 – 63 sts on a rnd, and leg measures approx. 11 – 13 – 15 – 17 – 19 – 24 cm/4.3-5.1-5.9-6.7-7.5-9.4 in. Work 1 rnd in St st, and dec evenly across number of sts to be 42 – 44 – 46 – 48 – 50 – 52 sts. Change to needles size 2½ mm. Work in rnds approx. 4 cm/1.6 in in K1,P1 rib. Bind off in rib.

Work same for the other leg.

Finishing : Sew elastic with cross-sts on WS of waist rib.

HAT

Beg from one earflap

Using needles size 3 mm and beige yarn, cast on 9 sts (same for all sizes). Work back and forth in patt A (drop st mid ear flap), **inc same time** 1 st beg of each row until there is 15 sts on a row. Cont working until earflap measures approx. 4 cm/1.6 in. Work same for the other earflap.

Slip both earflaps on same needle, and cast on 15 sts between them = mid back. Cont working back and forth in patt A. Cast on after 2 rows 39 – 39 – 45 – 45 – 51 – 57 sts to the end of row = mid front. There is now 84 – 84 – 90 – 90 – 96 – 102 sts on a rnd. Cont working in rnds in patt A until work measures approx. 7 – 8 – 9 – 10 – 11 – 12 cm/2.8-3.1-3.5-4-4.3-4.7 in (= measured mid front).

Beg dec for crown : *K4, K2tog*, rep *-* across the rnd. Work 1 rnd in St st. Rep dec with 1 st less between dec until 28 – 28 – 30 – 30 – 32 – 34 sts rem on a rnd. Knit all sts tog in pairs. Break yarn, thread through rem sts, tighten the yarn slightly, and weave in on WS.

Finishing : Beg from behind right earflap, using needles size 2½ mm, pick up sts along the lower edge (approx. 30 sts from both earflaps). Place markers both sides of cast-on sts of earflaps (I), and before and after both earflaps (II). Work 8 rnds in Garter st, and **same time inc** 1 st both sides of (I), and **dec** 1 st both sides of (II) every 2nd rnd. Bind off.

Viking Bjørk

Overall

1409-9

Size : 1-3-6-9-12-months -2 yrs

Chest : 40-43-47-51-55-60 cm

15.7-16.9-18.5-21.7-23.6 in

Length : 40-43-46-49-51-53 cm

15.7-16.9-18.1-19.3-20.1-20.9 in

Sleeve length : 3-3-3-4-4-4 cm

1.2-1.2-1.2-1.6-1.6-1.6 in

Leg length : 4-4-4-5-5-5 cm

1.6-1.6-1.6-2-2-2 in

ALTERNATIVE YARN: Viking Bjørk (90 % cotton, 10 % merino wool), Viking Alpaca Silk (50 % alpaca, 50 % silk), 50 g ball

White, 500 : 2-3-3-4-4-5 balls

Needles size 2 ½ and 3 mm – US 1 or 2 and 2 or 3 – UK/Canadian 13 or 12 and 11
+ 5-5-5-6-6-6 buttons

Gauge: 25 sts = approx. 10 cm/4 in over St st using needles size 3 mm. **Check your gauge to ensure success.**

Beg from lower edge of one leg

Using needles size 2 ½ mm, cast on 58 – 62 – 66 – 70 – 74 – 78 sts. Work in rnds approx. 2 – 2 – 2 – 3 – 3 – 3 cm/0.8-0.8-0.8-1.2-1.2-1.2 in in K1,P1 rib. Change to needles size 3 mm. Work 1 rnd in St st, and **inc** evenly across number of sts to be 64 – 68 – 72 – 76 – 80 – 84 sts. Work in patt A until work measures approx. 4 – 4 – 4 – 5 – 5 – 5 cm/1.6-1.6-1.6-2-2-2 in.

Leave work aside, and knit same for the other leg.

Knit sts of one leg on needle size 3 mm, cast on 11 sts (= mid front), knit sts of the other leg on same circular needle and cast on 11 sts (mid back). There is now 150 – 158 – 166 – 174 – 182 – 190 sts on a rnd. Cont working in patt A same as before, and St st over cast-on sts mid front and back. Dec **same time** mid front and back: Work until 1 st rem of one leg, sl 1 st, K1, pss0, K9, K2tog. Rep dec mid back. Rep dec every rnd, with 2 sts less between each dec. Place marker round mid front and back sts. When 1 St st rem, dec as foll: Work until 2 sts rem before mid front st. K2tog, knit mid st, sl next st, K1, pss0. Rep dec mid back. Rep dec every 2nd rnd until 102 – 110 – 118 – 126 – 134 – 142 sts rem on a rnd.

Next rnd: Bind off 5 sts mid front (bind off on 3rd row of chart, always on RS). Place markers at both sides, 23 – 25 – 27 – 29 – 31 – 33 sts for each front, and 51 – 55 – 59 – 63 – 67 – 71 sts for back. Cont working back and forth in patt A same as before. When work measures approx. 31 – 33 – 35 – 37 – 39 – 39 cm/12.2-13-13.8-14.6-15.4-15.4 in, measured from cast-on edge (end with a complete patt), bind off 10 sts at each side for armholes (= 5 sts both sides of the markers). Leave work aside, and knit the sleeves.

Sleeves : Using needles size 2 ½ mm, cast on 36 – 40 – 40 – 44 – 48 – 52 sts. Work in rnds approx. 2 cm/0.8 in in K1,P1 rib. Change to needles size 3 mm. Work 1 rnd in St st, and **inc** evenly across number of sts to be 41 – 45 – 45 – 49 – 53 – 57 sts. Place

a marker beg of rnd (= mid under sleeve). Work in patt A (= 8 rnds). Bind off 10 sts mid under sleeve (= 5 sts both sides of the marker). Leave work aside, and knit same for the other sleeve.

Yoke : Slip all pieces on same circular needle size 3 mm, sleeves over the bound-off sts for armholes (= 139 – 155 – 163 – 179 – 195 – 211 sts). Place markers at each 4 seamline. Cont working back and forth in patt A, and **same time** beg raglan-dec: Work until 2 sts rem before a marker, sl 1 st, K1, pssso, K2tog. Rep dec at each 4 seamline every 2nd row until 59 – 67 – 75 – 75 – 75 – 83 sts rem on a row (= 10 – 11 – 11 – 13 – 15 – 16 dec).

Change to needles size 2 ½ mm. Work approx. 1 ½ – 1 ½ – 1 ½ – 2 – 2 – 2 cm/0.6-0.6-0.6-0.8-0.8-0.8 in in K1,P1 rib. Bind off in rib.

Front bands:

Right front for boy, left front for girl:

Beg from RS, using needles size 2½ m knit or pick up approx. 76 – 80 – 84 – 88 – 94 – 100 sts along front the edge. Work approx. 2½ cm/1 in in K1,P1 rib. Bind off in rib.

Left front for girl, right front for girl:

Beg from RS, using needles size 2½ mm, knit or pick up approx. 76 – 80 – 84 – 88 – 94 – 100 sts along the edge. Work back and forth in K1,P1 rib. Make 5 – 5 – 5 – 6 – 6 – 6 buttonholes after approx. 1 cm/0.4 in: First buttonhole 4 sts from upper edge, and rest evenly spaced apart. Buttonhole: Bind off 2 sts. Next row: Cast on 2 sts over the bound-off sts. When work measures approx. 2½ cm/1 in, bind off in rib.

Finishing

Sew sleeve seams. Place buttonhole band over the other band, and sew lower edge to the 5 bound-off sts. Sew on 5 – 5 – 5 – 6 – 6 – 6 buttons. Weave in all ends on WS.

White, 500: 3 - 3 - 4 - 4 balls
Pink, 565: 1 - 1 - 1 - 1 ball

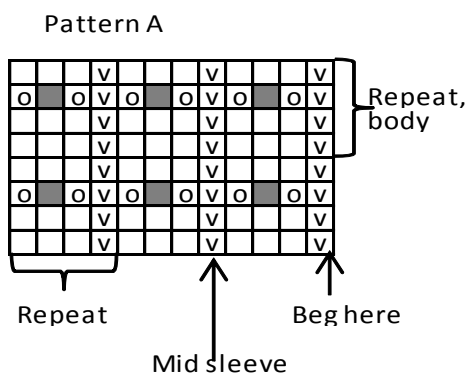
Circular needle and double pointed needles size 2 ½ and 3 mm – US 1 or 2 and 2 or 3 – UK/Canadian 13 or 12 and 11

Gauge: 25 sts = approx. 10 cm/4 in over St st using needles size 3 mm. **Check your gauge to ensure success.**

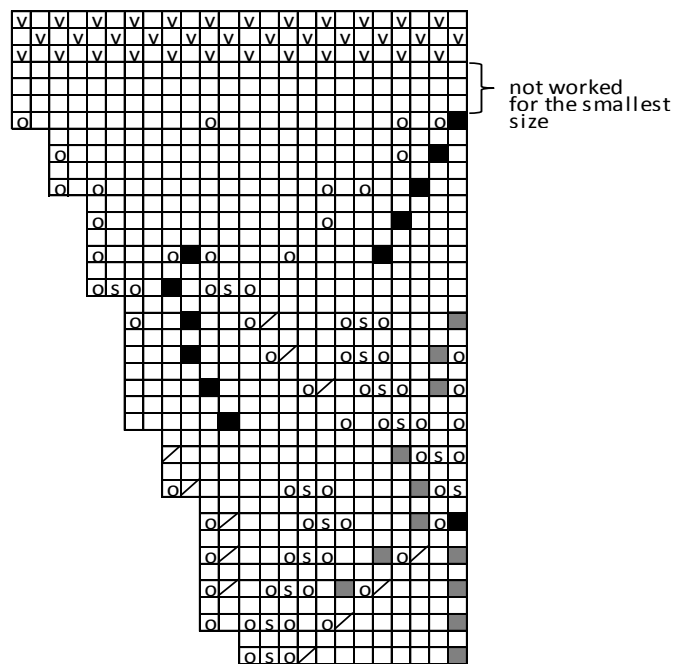
Beg from neck edge: Using needles size 2½ mm and pink yarn, cast on 72-84-96-96 sts. Work 6 rnds in Garter st. Change to needles size 3 mm and white yarn. Work 1 rnd in St st. Cont working in patt and inc as charted until there is 144-168-192-192 sts on a rnd. End with Seed st as charted. Bind off rather loosely in Seed st (purl-sts knitwise, and knit-sts purlwise).

Knit or pick up sts from WS (first rnd in Seed st after lace patt), 45-51-55-59 sts for back, skip 27-33-41-37 sts = sleeve, cast on 9-11-11-13 sts for armhole, pick or knit up 45-51-55-59 sts for front, skip 27-33-41-37 sts for sleeve, and cast on 9-11-11-13 sts for armhole. There is now 108-124-132-144 sts on a rnd. Place 4 markers across the rnd: One mid front and back, and one on each side (place each marker round 1 st). There is now 26-30-32-35 sts between each marker. Cont working in St st (armhole sts are worked in K1,P1 rib for first 3 rnds), and inc 1 st both sides of the markers (= inc 8 sts on a rnd). Rep in every 6th rnd until work measures approx. 2 cm/0.8 in less than the given length, or as desired. Work 6 rnds in Seed st. Bind off rather loosely in Seed st.

Weave in all ends on WS.



- = Knit on RS, purl on WS
- = Purl on RS, knit on WS
- = 1 yo
- = Slip 1 st, K2tog, pssso



- = knit (knit on RS, purl on WS)
- = K2toetbl
- = slip 1 st, K2tog, pssso
- = 1 vo
- = K1tbl
- = K2tog
- = purl (purl on RS, knit on WS)

Viking Bjørk

Dress

1409-10

Size:	6 months	1 yrs	2 yrs	4 yrs
Chest:	43 - 50	53 - 58 cm	16.9 - 19.7	20.9 - 22.8 in
Length:	42 - 45	48 - 52 cm	16.5 - 17.7	18.9 - 20.5 in

ALTERNATIVE YARNS: Viking Bjørk (90 % cotton, 10 % merino wool), Viking Alpaca Silk (50 % alpaca, 50 % silk), 50 g ball

Viking Bjørk

Cardigan, pants and hat

1409-11

Size : 1 – 3 – 6 – 9 – 12 months

Chest: 39 – 43 – 47 – 51 – 56 cm

15.4-16.9-18.5-20.1-22 in

Length: 21 – 23 – 25 – 28 – 30 cm

8.3-9.1-9.8-11-11.8 in

Sleeve length : 14 – 16 – 18 – 20 – 22 cm

5.5-6.3-7.1-7.9-8.7 in

Leg length : 15 – 17 – 19 – 21 – 23 cm

5.9-6.7-7.5-8.3-9.1 in

Circumference: 36 – 37 – 37 – 39 – 40 cm

14.2-14.6-14.6-15.4-15.7 in

ALTERNATIVE YARN: Viking Bjørk (90% cotton, 10% merino wool), Viking Alpaca Silk (50% alpaca , 50% silk), 50 g ball

Off-White, 502: 4-5-5-6-6 balls

Needles size 2 ½ and 3 mm – US 1 or 2 and 2 or 3 – UK/Canadian 13 or 12 and 11 + 3 pairs of clasps, elastic

Gauge: 25 sts = approx. 10 cm/4 in over St st using needles size 3mm. **Check your gauge to ensure success.**

CARDIGAN

Using needles size 2½ mm and off-white, cast on 92 – 104 – 116 – 128 – 140 sts. Work back and forth 6 rows in Garter st. Change to needles size 3 mm. Work as foll: Garter st over 4 sts (= right front), patt A over next 84 – 96 – 108 – 120 – 132 sts, and inc **same time** as charted, end with Garter st over 4 sts (= left front). There is now 106 – 120 – 134 – 148 – 162 sts on a row Place markers each side, 25 – 30 – 33 – 37 sts for each front, and 56 – 60 – 68 – 74 – 82 sts for back.

Cont working back and forth as established. When work measures approx. 12 – 13 – 14 – 16 – 18 cm/4.7-5.1-5.5-6.3-7.1 in, divide work at sides for armholes. Finish first back.

Back : Cont working back and forth in patt until work measures approx. 21 – 23 – 25 – 28 – 30 cm/8.3-9.1-9.8-11-11.8 in. Knit 1 row over all sts and dec same as what you inc across 1st row.

Right front : Cont working back and forth in patt and Garter st same as before. When work measures approx. 18 – 20 – 21 – 24 – 26 cm/7.1-7.9-8.3-9.4-10.2 in, slip first 8 – 12 – 12 – 12 – 12 sts on holder for neck edge. Bind off at neck edge every 2nd row 1x3 – 3 – 3 – 4 – 4 – sts, 1 – 1 – 1 – 2 – 2x2 sts, and 1 – 1 – 2 – 1 – 1x1 st. When front measures same as back, knit 1 row over all sts, and dec same as what you inc across 1st row.

Work same for left front, rev all shaping.

Sleeves : Using needles size 2½ mm and off-white yarn, cast on 36 – 38 – 40 – 42 – 44 sts. Work 10 rnds in Garter st. Change to needles size 3 mm. Place a marker beg of rnd (= mid under sleeve). Work in patt A as charted (inc across 1st row same as for body), and inc **same time** 1 st both sides of the marker approx. every 2 ½ – 2 ½ – 2 ½ – 2 ½ cm/1-1-1-0.8-1 in until there is 46 – 50 – 54 – 60 – 60 sts on a rnd and sleeve measures approx. 14-16-18-20-22 cm/5.5-6.3-7.1-7.9-8.7 in. Knit 1 rnd over all sts, and dec same as what you inc across 1st rnd.

Finishing : Join shoulder seams.

Neck band : Beg from right front. Using needles size 2½ mm, knit or pick up approx. 64 – 68 – 70 – 74 – 78 sts, and work 6 rows in Garter st. Bind off (take care that edge doesn't turn out too loose).

Sew on sleeves, and 3 pairs of clasps.

HAT

Using needles size 2 ½ mm, cast on 92 – 96 – 100 – 104 – 108

sts. Work in rnds 6 cm/2.4 in in K1,P1 rib. Change to needles size 3 mm. Cont working in patt I over all sts. When hat measures approx. 16 – 17 – 17 – 18 – 19 cm/6.3-6.7-6.7-7.1-7.5 in, beg dec for crown: Knit all sts tog in pairs. Work 2 rnds in St st. Rep dec. There is now 23 – 24 – 25 – 26 – 27 sts on a rnd. Work 1 rnd in St st. Next rnd: Knit all sts tog in pairs. Break yarn, and thread through rem sts.

Earflap: Cast on 5 sts. Work back and forth in patt I, and inc 1 st into second last st **every** row until there is 15 – 15 – 17 – 17 – 19 sts on a row. Work 3 cm/1.2 in without inc. Bind off.

Fold rib on RS, approx. 4 cm/1.6 in. Sew on earflaps approx. 5 – 5 – 6 – 6 – 7 cm/2-2-2.4-2.4-2.8 in both sides of mid back, 1 cm from folding on WS.

Twist 2 approx. 30 cm/11.8 in long cords, and sew one to each earflap.

PANTS (choose between long or short legs)

Beg from waist

Using needles size 2½ mm and off-white yarn, cast on 108 – 112 – 120 – 128 – 132 sts. Work in rnds approx. 2 cm/0.8 in in K1,P1 rib. Change to needles size 3 mm. Place markers each side, 55 – 57 – 61 – 65 – 67 sts for back, and 53 – 55 – 59 – 63 – 65 sts, and also round sts mid front and back. sts.

Beg from mid back. K7 – 8 – 10 – 9 – 10, turn, P13 – 15 – 19 – 17 – 19. Turn, and work each time 7 – 7 – 7 – 8 – 8 sts more until you reach both sidemarkers. Cont working in rnds in patt I over all sts. When work measures approx. 14 – 15 – 17 – 19 – 21 cm/5.5-5.9-6.7-7.5-8.3 in (measured mid front), **inc** 1 st both sides of the markers mid front and back. Rep inc every 2nd rnd altog. 6 times. There is now 132 – 136 – 144 – 152 – 156 sts on a rnd.

Long legs : Knit sts from mid front until mid back = 66 – 68 – 72 – 76 – 78 sts on a rnd. Cont working in rnds in patt I same as before. Place a marker beg of rnd = inner seam. Dec 1 st both sides of the marker approx. every 1 – 1 – 1 ½ – 1 ½ – 2 cm/0.4-0.4-0.6-0.6-0.8 in until 46 – 48 – 52 – 56 – 60 sts rem on a rnd, and leg measures approx. 11 – 13 – 15 – 17 – 19 cm/4.3-5.1-5.9-6.7-7.5 in, or desired length. Change to needles size 2½ mm, and work in rnds approx. 4 cm/1.6 in in K1,P1 rib. Bind off in rib.

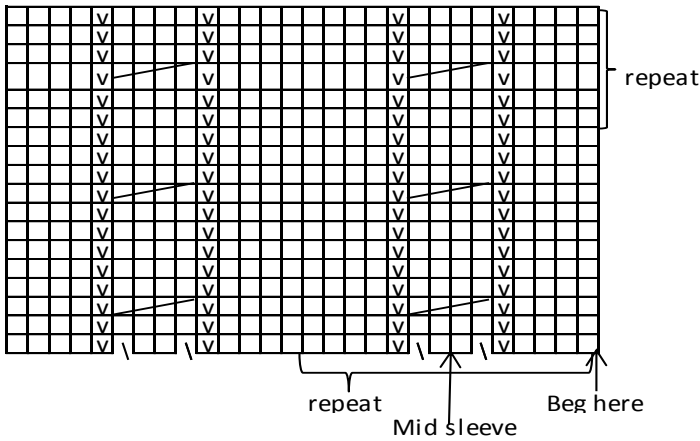
Work same for the other leg.

Short legs : Knit sts from mid front until mid back = 66 – 68 – 72 – 76 – 78 sts on a rnd. Cont working in rnds in patt I same as before. When leg measures approx. 4 cm/1.6 in, change to needles size 2½ mm. Cont working in K1,P1 rib until rib measures approx. 8 – 8 – 10 – 10 – 12 cm/ 3.1-3.1-4-4-4.7in. Bind off in rib. Fold rib in double.

Work same for the other leg.

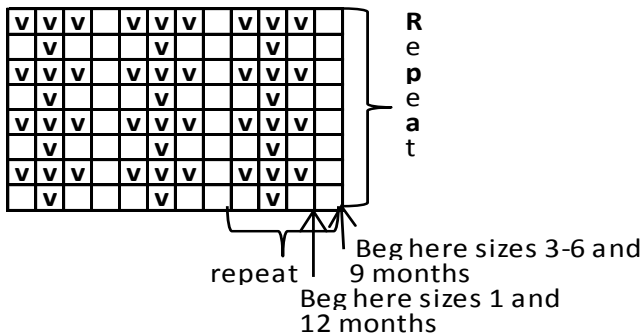
Finishing : Fasten elastic with cross-sts inside waist rib.

Pattern A



- v = Purl on RS, knit on WS
- = Knit on RS, purl on WS
- | = inc 1 st
- / / / = Slip 2 sts on cn, and hold to back, K2, knit sts from cn

Pattern I



Viking Bjørk

Blanket

1409-12

Size: 79 X 79 cm
31.1 X 31.1 in

ALTERNATIVE YARN: Viking Bjørk (90% cotton, 10% merino wool), Viking Alpaca Silk (50% alpaca, 50% silk), 50 g ball

Off-White, 502 : 4 balls

Needles size 4 and 5 mm – US 6 and 8 - UK/Canadian 8 and 6
Crochet hook size 3 mm – US C/2 or D/3 – UK/Canadian 11

Gauge: 20 sts = approx. 10 cm/4 in over pattern using needles size 4 mm. **Check your gauge to ensure success.**

Pattern:

1st row: K1 (= selvage st), *1 yo - K2tog*, rep *-* across the row, end with K1 (= selvage st).

Rep 1st row both on RS and WS.

Using needles size 5 mm, cast on 150 sts. Work back and forth in patt. Always knit first st. Work 2 rows, and change to needles size 4 mm. Cont working back and forth in patt until work measures approx. 75 cm/29.5 in. Always beg a new ball of yarn at one side, and weave in all ends along sides. Bind off loosely. **Edge round the blanket :** Crochet 5 rnds in sc. Inc 2 sts at each corner every rnd.

Viking Bjørk

Pants

1409-13

Size : 1 - 3 - 6 - 9 – 12 months

Hips: 56-60-64-68-72 cm

22-23.6-25.2-26.8-28.3 in

Leg length : 6 - 7 - 7 - 8 - 8 cm

2.4-2.8-2.8-3.1-3.1 in

ALTERNATIVE YARN: Viking Bjørk (90% cotton, 10% merino wool), Viking Alpaca Silk (50% alpaca , 50% silk), 50 g ball

Blue, 523 : 3-3-4-4-5 balls

Circular needle and double pointed needles 2 ½ and 3 mm – US 1or 2 and 2 or 3 – UK/Canadian 13 or 12 and 11
+ 2 buttons, elastic

Gauge: 25 sts = approx. 10 cm/4 in over St st using needles size 3 mm. **Check your gauge to ensure success.**

Beg from waist

Using needles size 2 ½ mm and blue yarn, cast on 98 – 106 – 112 – 120 – 126 sts. Work in rnds approx. 4 cm/1.6 in in K1,P1 rib. Change to needles size 3 mm. Work 1 rnd in St st, and inc 1 st into each st across the rnd = 196 – 210 – 224 – 238 – 252 sts (sizes 3 and 9 months: knit 2 sts without inc). Place markers each side, 98 – 106 – 112 – 120 – 126 sts for back, and 98 – 104 – 112 – 118 – 126 sts for front, and also mid front and back. Beg from right side, and work in rnds in patt I as charted.

When work measures approx. 14 – 16 – 17 – 19 – 20 cm/ in, **inc** 1 st both sides of markers mid front and back every 2nd rnd altog. 6 times (purl all inc sts). Slip 12 sts mid front and back on holder to be joined tog later on.

Work for leg : Work from mid front sts on holder to mid back sts on holder = 98 – 105 – 112 – 119 – 126 sts on same circular needle. Work 2 cm/0.8 in patt I same as before (rnd begins from inner seam). Change to needles size 2 ½ mm. Next rnd: Dec evenly across number of sts to be 62 – 64 – 66 – 68 – 70 sts. Cont working in K1,P1 until leg measures approx. 10 – 11 – 12 – 13 – 14 cm/4-4.3-4.7-5.1-5.5 in. Bind off in rib. Fold rib in double on RS.

Work same for the other leg.

Straps : Using needles size 2½ mm, cast on 10 sts (same for all sizes), and work as foll: 1 selvage st (= knit on every row), patt II over 8 sts, end with selvage st. Cont working back and forth until strap measures approx. 26 – 27 – 28 – 29 – 30 cm/10.2-10.6-11-11.4-11.8 in, or desired length. Dec as foll: 1 selvage st, K2tog, patt over 4 sts, sl 1 st, K1, pssso, 1 selvage st. Cont working in St st, and knit tog 2 last sts every row until 1 st rem. Break yarn, and draw through the st.

Work same for the other strap.

Finishing: Sew straps on back inside waist rib, approx. 4 – 4 – 5 – 5 – 5 cm/1.6-1.6-2-2-2 in spaced apart. Sew on buttons to fasten the straps on front, on RS.

Fasten elastic inside waist rib.

Viking Bjørk

Overall

1409-14

Size : 6 -9 months - 1 - 2 - 3 - 4 yrs

Chest : 49-53-56-59-62-65 cm
19.3-20.9-22-23.2-24.4-25.6 in

Length : 47-50-51-54-56-58 cm
18.5-19.7-20.1-21.3-22-22.8 in

Sleeve length : 6-6-6-6-6 cm
2.4-2.4-2.4-2.4-2.4-2.4 in

Leg length : 7-7-7-8-8-8 cm
2.8-2.8-2.8-3.1-3.1-3.1 in

ALTERNATIVE YARN: Viking Bjørk (90 % cotton, 10 % merino wool), Viking Alpaca Silk (50 % alpaca, 50 % silk), 50 g ball

White, 500 : 2-3-3-4-4-5 balls

Navy Blue, 526 : 1-1-1-1-1-1 ball

Blue, 523 : 1-1-1-1-1-1 ball

Needles size 2 ½ and 3 mm – US 1 or 2 and 2 or 3 – UK/Canadian 13 or 12 and 11

+ 5-5-6-6-6-7 buttons

Gauge: 25 sts = approx. 10 cm/4 in over St st using needles size 3 mm. **Check your gauge to ensure success.**

Beg from lower edge of one leg

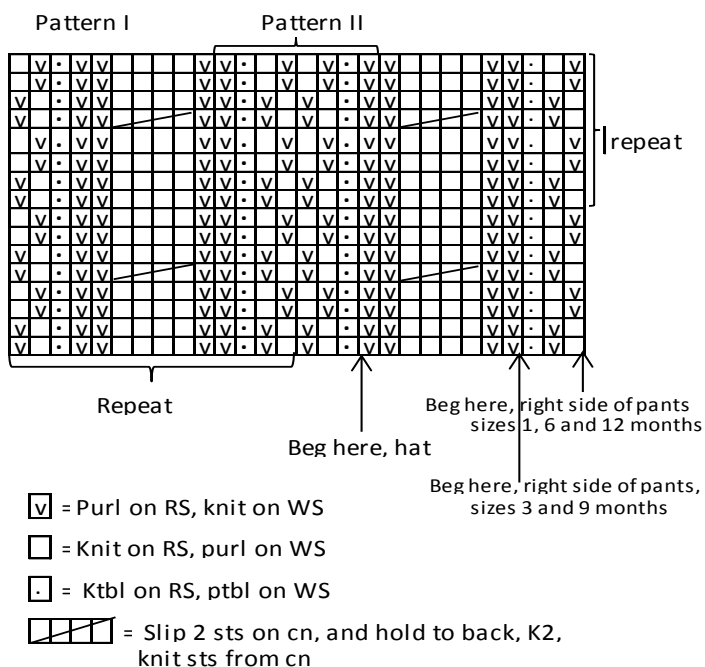
Using needles size 2½ mm and navy blue yarn, cast on 64 – 68 – 72 – 76 – 80 – 84 sts. Work in rnds approx. 2 cm/0.8 in in K1,P1 rib. Change to needles size 3 mm. Work 1 rnd in St st, and inc evenly across number of sts to be 76 – 80 – 84 – 88 – 92 – 96 sts. Work patt I, and after that cont working in St st with white yarn until leg measures approx. 7 – 7 – 7 – 8 – 8 – 8 cm/2.8-2.8-2.8-3.1-3.1-3.1 in.

Leave work aside, and knit same for the other leg.

Cont working with white yarn, knit sts from one leg over circular needle size 3 mm, cast on 10 sts (= mid front), knit sts from the other leg over same circular needle, and cast on 10 sts (= mid back). There is now 172 – 180 – 188 – 196 – 204 – 212 sts on a rnd. Cont working in St st with white yarn, and dec as foll: Work until 1 st rem from one leg, sl 1 st, K1, pssso, K8, K2tog, rep dec mid back. Rep dec every rnd with 2 sts less between each dec. Place markers mid front and back. When all cast-on sts are decreased, cont dec as foll: Work until 2 sts rem before mid front marker, K2tog, sl 1 st, K1, pssso. Rep dec mid back. Rep dec every rnd until 124 – 132 – 140 – 148 – 156 – 164 sts rem. Next rnd: Bind off 6 sts mid front. Place markers each side, 28 – 30 – 32 – 34 – 36 – 38 sts for both fronts, and 62 – 66 – 70 – 74 – 78 – 82 sts for back. Cont working back and forth in St st. When work measures approx. 37 – 40 – 40 – 43 – 44 – 44 cm/14.6-15.7-15.7-16.9-17.3-17.3 in, bind off 10 sts at each side for armholes (= 5 sts both sides of the markers). Leave work aside, rnd knit the sleeves.

Sleeves : Using needles size 2½ mm and blue yarn, cast on 48 – 50 – 54 – 56 – 60 – 66 sts. Work in rnds approx. 2 cm/0.8 in in K1,P1 rib. Change to needles size 3 mm. Cont working in patt II, and inc across 1st rnd number of sts to be 49 – 51 – 55 – 57 – 61 – 69 sts. Place a marker beg of rnd (= mid under sleeve). Bind off 10 sts mid under sleeve on last rnd (= 5 sts both sides of the marker). Leave work aside, and knit same for the other sleeve.

Yoke : Slip all pieces on same circular needle size 3 mm, sleeves over the bound-off sts for armholes = 176 – 188 – 204 – 216 – 232 – 256 sts. Place markers at each 4 seamline. Cont working back and forth in St st with white yarn, and beg raglan-dec: Work until 2 sts rem before a marker, sl 1 st, K1, pssso, K2tog



after a marker. Rep dec at each 4 seamline every 2nd row. When you have completed 8 – 9 – 11 – 12 – 14 – 16 raglan-dec, work in patt III. Beg and end with a complete fish on fronts, and with arrow pointing out mid sleeve. Rep dec until 72 – 76 – 76 – 80 – 80 – 88 sts rem on a row (= 13 – 14 – 16 – 17 – 19 – 21 raglan-dec).

Change to needles size 2½ mm and navy blue yarn. Work 1 row in St st, and cont then working approx. 2 cm/0.8 in in K1,P1 rib. Bind off in rib.

Right front band: Beg from RS. Using needles size 2½ mm and white yarn, pick or knit up approx. 85 – 89 – 95 – 99 – 103 – 107 sts along front edge. Work approx. 3 cm/1.2 in in K1,P1 rib. Bind off in rib.

Left front band : Work same as for right front, but when band measures approx. 1 ½ cm/0.6 in, make 5 – 5 – 6 – 6 – 6 – 7 buttonholes as foll: Make first buttonhole 4 sts inside upper edge, and rest evenly spaced apart. Buttonhole: Bind off 3st. Next row: Cast on 3 sts over the bound-off ones.

Finishing : Sew underarm seams. Place front bands on top of each other, and sew lower edge to bound-off sts. Weave in all ends on WS.

Viking Bjørk

Dress

1409-15

Size: 1-2-3-4-6 yrs

Chest: 48-50-53-55-58 cm

18.9-19.7-20.9-21.7-22.8 in

Length: 44-48-52-56-60 cm

17.3-18.9-20.5-22-23.6 in

Sleeve length: 6-6-7-7-7 cm

2.4-2.4-2.8-2.8-2.8 in

ALTERNATIVE YARN: Viking Bjørk (90% cotton, 10% merino, superwash), Viking Alpaca Silk (50% alpaca, 50% silk), 50 g ball

Navy Blue, 526 : 3-3-4-4-5 balls

White, 500 : 1-2-2-2-3 balls

Red, 550 : 1-1-1-1-1 ball

Needles size 2½ and 3 mm – US 1 or 2 and 2 or 3 – UK/Canadian 13 or 12 and 11

Crochet hook 3 mm – US C/2 or D/3 – UK/Canadian 11

+ 3 small buttons

Gauge: 25 sts = approx. 10 cm/4 in over St st using needles size 3 mm. **Check your gauge to ensure success.**

Using needles size 2½ mm and white yarn, cast on 240-252-264-276-288 sts. Work back and forth 16 rnds in Garter st. Change to needles size 3 mm. Cont working in patt I as charted. When patt I is ready, cont working in St st with navy blue yarn until work measures approx. 30-33-36-39-41 cm/11.8-13-14.2-15.4-16.1 in. Work 1rnd, and knit all sts tog in pairs across the rnd = 120-126-132-138-144 sts on a rnd. Place markers each side, 61-63-67-69-73 sts for back, and 59-63-65-69-71 for front. Change to red yarn, and work 10 rnds in Garter st. Cont working in St st with white yarn until work measures approx. 35-39-42-45-48 cm/13.8-15.4-16.5-17.7-18.9 in. Bind off 6-6-8-8-8 sts at each side (3-3-4-4-4 sts both sides of the markers). Finish back and front separately.

Back : Cont working with white yarn. Bind off mid st for split, and finish each side separately. Bind off at armhole edge every 2nd row 1x2 sts, and 1x1 st. Cont working until work measures 44-48-52-56-60 cm/17.3-18.9-20.5-22-23.6 in, and armhole measures approx. 9-9-10-11-12 cm/3.5-3.5-4-4.3-4.5 in. Bind off. Work same for the other side, rev all shaping.

Front : Work same as for back, but without split. When work measures 3 cm/1.2 in less than total length, bind off mid 13-13-15-15-17 sts for neck edge. Finish each side separately. Bind off at neck edge every 2nd row 1x2 sts, and 1x1 st. When front measures same as back, bind off. Work same for the other side, rev all shaping.

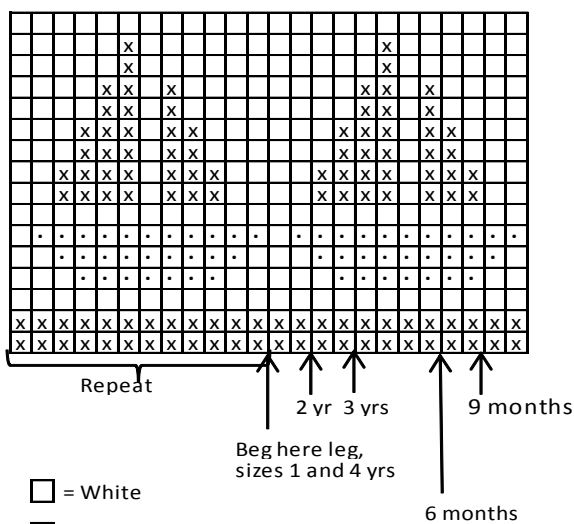
Sleeves : Using needles size 2½ mm and white yarn, cast on 42-44-46-48-50 sts. Work 10 rnds in Garter st. Change to needles size 3 mm and red yarn. Work 3 rnds in St st, and inc evenly across 2nd rnd number of sts to be 46-46-50-56-60 sts. Place a marker mid under sleeve. Cont working in rnds in St st with navy blue yarn until sleeve measures approx. 6-6-7-7-7 cm/2.4-2.4-2.8-2.8-2.8 in. Bind off 6-6-8-8-8 sts mid under sleeve (3-3-4-4-4 sts both sides of the marker). Cont working back and forth, and bind off at each edge every 2nd row 1x2 sts, and 1x1 st. Bind off rem sts.

Work same for the other sleeve.

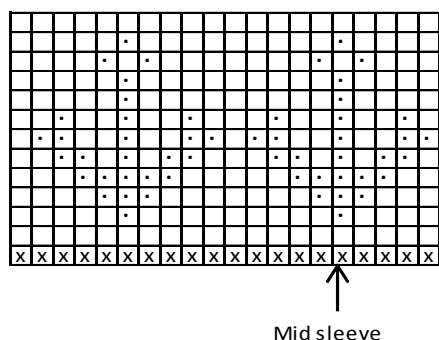
Finishing : Join shoulder seams (sew back and front sts tog, and leave mid back sts for neck edge). Weave in all ends on WS.

Neck band: Beg from mid back. Using needles size 2½ mm and red yarn, pick or knit up approx. 60-62-66-68-70 sts. Work back and forth 6 rows in Garter st. Bind off rather loosely.

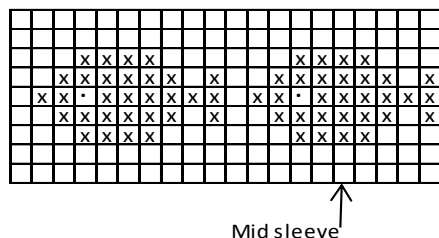
Pattern I



Pattern II



Pattern III



Finishing : Using hook size 3 mm and white yarn, crochet sc-row to spilt edges. Make 3 buttonhole loops = fasten yarn with 1 sl st, ch3, skip 2 sts, and fasten with 1 sl st to next st. Make first buttonhole loop mid neck band, and 2 more buttonholes evenly spaced apart. Sew on 3 buttons. Weave in all ends on WS.

Viking Bjørk

Sweater, pants and hat

1409-16

Size : 1 – 3 – 6 – 9 – 12 months

Chest: 39 – 43 – 47 – 51 – 56 cm

15.4-16.9-18.5-20.1-22 in

Length: 21 – 23 – 25 – 28 – 30 cm

8.3-9.1-9.8-11-11.8 in

Sleeve length : 16 – 18 – 20 – 22 – 24 cm

6.3-7.1-7.9-8.7-9.4 in

Leg length : 15 – 17 – 19 – 21 – 23 cm

5.9-6.7-7.5-8.3-9.1 in

Circumference: 36 – 37 – 37 – 39 – 40 cm

14.2-14.6-14.6-15.4-15.7 in

ALTERNATIVE YARN: Viking Bjørk (90% cotton, 10% merino wool), Viking Alpaca Silk (50% alpaca , 50% silk), 50 g ball

Whole set:

Off-White, 502: 4-4-5-5-6 balls

Needles size 2 ½ and 3 mm – US 1 or 2 and 2 or 3 –

UK/Canadian 13 or 12 and 11

+ 2 buttons, elastic

Gauge: 25 sts = approx. 10 cm/4 in over St st using needles size 3 mm. **Check your gauge to ensure success.**

SWEATER

Using needles size 2 ½ mm, cast on 100 – 108 – 116 – 128 – 136 sts. Work in rnds approx. 3 – 3 – 3 – 4 – 4 cm/1.2-1.2-1.2-1.6-1.6 in in K1,P1 rib. Change to needles size 3 mm. Work in patt I.

Place markers each side, 51 – 55 – 59 – 65 – 69 sts for front, and 49 – 53 – 57 – 63 – 67 sts for back. When work measures approx. 11 – 12 – 13 – 15 – 17 cm/4.3-4.7-5.1-5.9-6.7 in, make a folding as foll: Work 5 rnds in St st, 1 eyelet rnd: *K2tog, 1 yo*, rep *-* across the rd, 4 rnds in St st. Using an extra needle pick up sts from WS, 1st St st-rnd, and knit tog with live sts (1 st from each needle). Rep across the rnd.

Divide work at sidemarkers. Finish first back.

Back : Work back and forth in patt II. When patt II measures approx. 1 cm/0.4 in, divide work 2 sts before mid back st. Finish each side separately.

Right back : Cast on 5 new sts to the end of row = buttonband. Work Garter st over the 5 cast-on sts. Cont working back and forth. When work measures approx. 7 – 8 – 9 – 10 – 10 cm/2.8-3.1-3.5-4-4 in (measured from folding) , slip 13 – 14 – 14 – 14 – 15 last sts on holder for neck edge. Bind off beg of every 2nd row 1x4 sts, and 1x1 – 1 – 1 – 2 – 2 sts = 9 – 10 – 12 – 14 – 15 sts rem for shoulder.

Left back: Work Garter st over first 5 sts, and patt II over rem sts. Make one buttonhole inside 2 sts from the edge after approx. 3 – 4 – 4 – 5 – 5 cm/1.2-1.6-1.6-2-2 in. Buttonhole: Bind off 2 sts. Next row: Cast on 2 sts over the bound-off sts. Make last buttonhole on last row before neck band. Work same for neck edge as for right side, but in reverse.

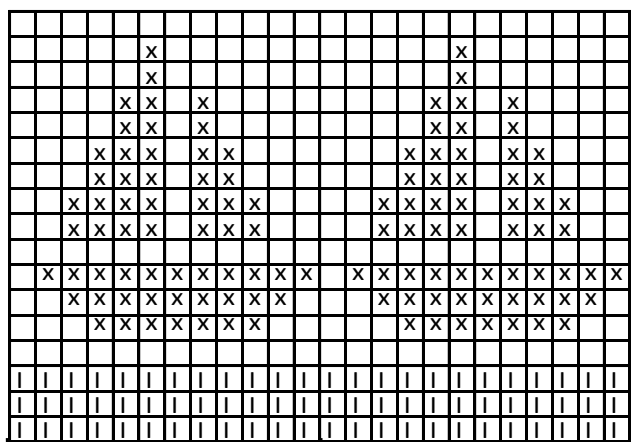
Front : Work back and forth in patt II. When work measures approx. 6 – 7 – 7 – 8 – 8 cm/2.4-2.8-2.8-3.1-3.1 in (measured from folding), slip 15 – 15 – 15 – 15 – 17 mid sts on holder for neck edge. Finish each side separately.

Bind off at neck edge every 2nd row 1x5 – 5 – 5 – 5 – 6 sts, 1x2 – 2 – 3 – 3 – 3 sts, and 2 – 2 – 2 – 1 – 1x1 st. Cont working until front measures same as back.

Work same for the other side, rev all shaping.

Sleeves : Using needles size 2 ½ mm, cast on 34 – 36 – 38 – 42 – 44 sts. Work in rnds approx. 3 – 3 – 3 – 4 – 4 cm/1.2-1.2-1.2-1.6-1.6 in in K1,P1 rib. Change to needles size 3 mm, and adjust

Pattern I



Repeat

Beg here

□ = Navy Blue

⊠ = White

▮ = Red

number of sts to be 35 – 37 – 39 – 43 – 45 sts. Work in rnds in patt I. Place a marker beg of rnd (= mid under sleeve). Inc 1 st both sides of the marker approx. every 2 ½ - 2 - 2 - 2 - 2 ½ cm/1.0-0.8-0.8-0.8-1 in until there is 45 – 51 – 55 – 61 – 61 sts on a rnd, and sleeve measures approx. 15- 17 – 19 – 21 – 23 cm/5.9-6.7-7.5-8.3-9.1 in. Make a folding: Work 5 rnds in St st, 1 eyelet rnd: *K2tog, 1 yo*, rep *-* across the rnd, 4 rnds in St st. Using an extra needle, pickup sts from WS, 1st St st-rnd, and knit tog with live sts (1 st from each needle). Rep across the rnd. Bind off sts on next rnd.

Work same for the other sleeve.

Neck band : Beg from left back. Slip 13 – 14 – 14 – 14 – 15 sts from holder on needles size 2½ mm. Pick or knit up approx. 47 – 47 – 51 – 53 – 53 sts along neck edge, and slip right back 13 – 14 – 14 – 14 – 15 sts from holder over needles. There is now approx. 73 – 75 – 79 – 81 – 83 sts on a row. Cont working in Garter st over first and last 5 sts, and K1,P1 rib over rem sts. When neck band measures approx. 2 cm/0.8 in, bind off (rib-sts in rib).

Finishing : Sew on sleeves, and join shoulder seams.

HAT

Using needles size 2 ½ mm, cast on 66 – 72 – 78 – 78 – 84 sts. Work back and forth approx. 2 cm/0.8 in in K1,P1 rib. Change to needles size 3 mm, and work 2 rows in Garter st. Cont working in patt II, and inc evenly across 1st row number of sts to be 77 – 81 – 89 – 93 – 97 sts. When hat measures approx. 8 – 9 – 10 – 11 – 12 cm/3.1-3.5-4-4.3-4.7/ in, make a folding: Work 5 rows in St st, 1 eyelet row: K2tog, 1 yo*, rep *-* across the row, 4 rnds in St st. Using an extra needle pickup sts from WS, 1st row St st-row, and knit tog with live sts (1 st from each needle). Rep across the row.

Bind off 24 – 26 – 30 – 30 – 32 sts at each edge. Cont working in patt II over rem 25 – 29 – 29 – 33 – 33 mid sts for approx. 10 – 11 – 12 – 12 – 13 cm/4-4.3-4.7-4.7-5.1 in.

Finishing: Sew mid back to the bound-off sts for sides.

Using needles size 2½ mm, pick or knit up 20 – 22 – 25 – 27 – 30 sts along right edge, sts mid back (already over needle), and 20 – 22 – 25 – 27 – 30 sts along left edge. Work back and forth in K1,P1 rib. When rib measures approx. 1 cm/0.4 in, make an eyelet row: *K2tog, 1 yo*, rep *-* across the row. Cont working in K1,P1 rib until neck band measures approx. 2 cm(0.8 in). Bind off in rib. Twist approx. 80 cm/31.5 in long cord, and thread into eyelet row.

PANTS (Choose between long or short legs)

Beg from waist

Using needles size 2½ mm and off-white yarn, cast on 108 – 112 – 120 – 128 – 132 sts. Work in rnds approx. 2 cm/0.8 in in rib.

Change to needles size 3 mm. Place markers each side, 55 – 57 – 61 – 65 – 67 sts for back, and 53 – 55 – 59 – 63 – 65 sts for front, and rnd mid sts front and back.

Beg from mid back. K7 – 8 – 10 – 9 – 10, turn, p13 – 15 – 19 – 17 – 19. Turn, and work 7 – 7 – 7 – 8 – 8 sts more each time until you reach both sidemarkers. Cont working in rnds in patt I over all sts. When work measures approx. 14 – 15 – 17 – 19 – 21 cm/5.5-5.9-6.7-7.5-8.3 in (measured mid front), **inc** 1 st both sides of markers mid front and back. Rep inc every 2nd rnd altog. 6 times. There is now 132 – 136 – 144 – 152 – 156 sts on a rnd.

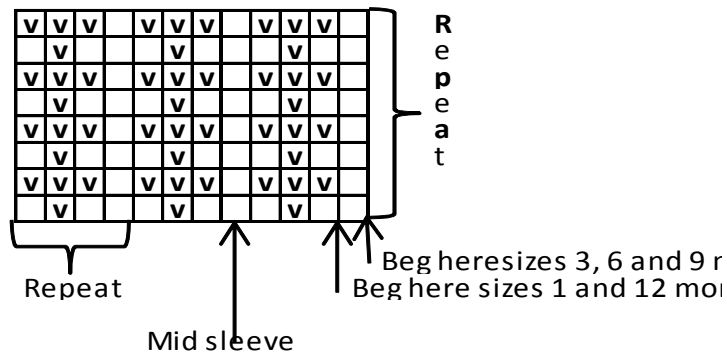
Long legs : Knit sts from mid front to mid back = 66 – 68 – 72 – 76 – 78 sts on a rnd. Cont working in rnds in patt same as before. Place a marker beg of rnd = inner seam of leg. Dec 1 st both sides of the marker approx. every 1 – 1 – 1 ½ – 1 ½ – 2 cm/0.4-0.4-0.6-0.6-0.8 in until 46 – 48 – 52 – 56 – 60 sts rem on a rnd, and leg measures approx. 11 – 13 – 15 – 17 – 19 cm/4.3-5.1-5.9-6.7-7.5 in, or desired length. Change to needles size 2½ mm, and work in rnds approx. 4 cm/1.6 in in K1,P1 rib. Bind off in rib. Work same for the other leg.

Short leg : Knit sts from mid front to mid back = 66 – 68 – 72 – 76 – 78 sts on a rnd. Cont working in rnds in patt same as before until leg measures approx. 4 cm/1.6 in. Change to needles size 2½ mm. Work in rnds in K1,P1 rib until leg measures approx. 8 – 8 – 10 – 10 – 12 cm/3.1-3.1-4-4-4.7 in. Bind off in rib. Fold rib in double.

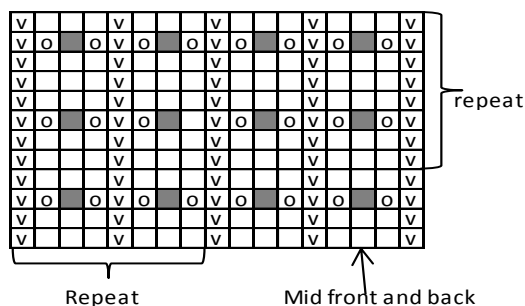
Work same for the other leg.

Finishing : Fasten elastic with cross-sts on WS of waist rib.

Pattern I



pattern II



- = Knit on RS, purl on WS
- ▣ = Purl on RS, knit on WS
- = 1 yo
- = Slip 1 st, K2tog, pss0