

Viking Bjørk

Blouse with crocheted sleeves 1407-1

Size:	XS	S	M	L	XL	XXL
Bust:	85	90	96	102	110	118 cm
	33.5	35.4	38.8	40.2	43.3	46.4 in
Length:	60	62	62	64	64	65 cm
	23.6	24.4	24.4	25.2	25.2	25.6 in
Sleeve length:	50	50	52	52	52	53 cm
	19.7	19.7	20.5	20.5	20.5	20.9 in

ALTERNATIVE YARNS: Viking Bjørk (90% cotton, 10% merino wool), Viking Alpaca Silk (50% alpaca , 50% silk), 50 g ball

Off-White 502	3	3	4	5	5	5 balls
Beige, 507	3	3	3	4	4	4 balls
Pink, 563	2	2	2	3	3	3 balls
Light Violet, 567	1	1	1	2	2	2 balls

Circular needle size 3 mm – US 2 or 3 – UK/Canadian 11

Crochet hook size 4 mm – US G/6 – UK/Canadian 8

Gauge: 25 sts = approx. 10 cm/4 in over Garter st using needles size 3 mm. **Check your gauge to ensure success.**

Gauge: 20 hdc using crochet hook size 4 mm = approx. 10 cm/4 in. **Check your gauge to ensure success.**

Crochet abbreviations:

sc= single crochet, ch (st) = chain stitch, hdc= half double crochet, dtr = double treble, dc = double crochet

BACK

Note! Whole garment is worked in Garter st. Using needles size 3 mm and pin yarn, cast on 116-122-130-138-148-158 sts. Knit 2 rows. Work in Garter st with stripes: 4 rills in violet – *3 rills in beige – 1 rill in off-white – 1 rill in beige – 4 rills in off-white – 2 rills in beige – 2 rills in pink – 4 rills in violet – 2 rills in pink*, rep *-* throughout the work. When work measures approx. 8-9-9-10-10-11 cm/3.1-3.5-3.5-4-4-4.3 in, dec 1 st at each edge. Rep dec approx. every 2 cm/0.8 in altog. 10 times (inside 1 selvage st). When work measures approx. 35-36-35-37-36-36 cm/ in, inc 1 st at each edge approx. every 1 cm/0.4 in altog. 5 times = 106-112-120-128-138-148 sts. When work measures 60-62-62-64-64-65 cm/23.6-24.4-24.4-25.2-25.2-25.6 in, bind off.

FRONT

Work same as for back. When work measures approx. 50-52-52-54-54-55 cm/19.7-20.5-20.5-21.3-21.3-21.7 in, bind off 27-27-29-29-31-31 mid sts for neck edge. Finish each side separately. Bind off at neck edge every 2nd row 1x4 sts, 1x3 sts, 1x2 sts, and 3x1 st (same for all sizes). When front measures same as back, bind off.

Work same for the other side, rev all shaping.

SLEEVES

Stripes for sleeves: *2 rows in pink – 2 rows in light violet – 1 row in pink – 2 rows in beige – 2 rows in off-white – 2 rows in beige*, rep *-* throughout the work.

Using needles size 3 mm and beige yarn, cast on 48-50-50-52-54-54 sts. Work 8 rows in Garter st. Change to off-white, and work 1 rill – change to beige and work 1 rill – change to off-white and work 2 rills. Bind off.

Crochet as foll: Beg with pink yarn, 1 sc to every st. Turn, 1 hdc to every st, and inc (= 2 hdc to same st) **same time** evenly across

number of sts to be 57-59-61-61-63-63 sts. Cont working with stripes and patt as foll:

1st row: Ch5 (4 ch-sts = 1st dtr + 1 ch-st), skip 1 st, *dtr to next st + ch1 – skip 1 st*, rep *-* across the row. End with one dtr into last st. Turn.

2nd row: Ch2 = 1st hdc. Work in hdc, inc 1 hdc at each edge (= 2 hdc into same st). Turn.

3rd row: Change to pink, ch2 = 1st hdc. Work in hdc. Turn.

4th row: Change to beige, ch2 = 1st hdc. Work in hdc, inc 1 hdc at each edge. Turn.

5th row: Ch4 = 1st dc + 1 ch-st. *Skip 1 st, 1 dc + ch1*, rep *-* across the row. Turn.

6th row: Change to off-white, ch2, work in hdc. Turn.

7th row: Work same as 1st row, but with off-white.

8th and 9th row: Work same as 4th and 5th row with beige.

10th and 11th row: Ch2, work in hdc.

Rep rows 1 to 11, and inc as explained. When there is altog. 81-85-87-87-93-99 sts on a row, cont working without inc. Work until sleeve measures approx. 50-50-52-52-52-53 cm/19.7-19.7-20.5-20.5-20.5-20.9 in, or desired length. End with a hdc-row. Weave in all ends, and sew sleeve seam.

Work same for the other sleeve.

Finishing

Sew shoulder and side seams leaving approx. 20-21-22-22-23-24 cm/7.9-8.3-8.7-8.7-9.1-9.4 in for armholes.

Neck band: Crochet sc-rnd along neck edge. Make sure that edge doesn't turn out to be too tight or loose. Next rnd: Work same as 5th row.

Sew on sleeves. Weave in all ends on WS.

FOOT DECOR

Ch6, join into ring with 1 sl st.

1st rnd: Ch1 = 1st sc + 8 sc into ring = 9 sts.

2nd rnd: Ch8 , *1 sl st to first st. 1 sl st to next st + ch8*, rep *-* across the rnd = 9 loops. End with 4 sl sts over first 4 ch-sts.

3rd rnd: *1 sc *1 sc to next ch-loop, ch4*, rep *-* across the rnd. End with 1 sl st to first sc = 9 ch-spaces.

4th rnd: Ch5 + 1 sl st to first ch-st = 1st corner.*Ch3 + 1 sc to prev rnd's ch-space, ch3 + 1 sc to prev rnd's sc*, rep *-* until there is 6 ch-spaces. Ch5 + 1 sl st to first ch-st (= 2nd corner). Rep after that*-* until there is 6 ch-spaces. Work 3rd corner same as the others + 6 ch-spaces. End with 3 sl sts along first corner.

5th rnd: Ch5 + 1 sl st to first ch-st = 1st corner.*Ch6, 1 sc to 2nd ch-space on prev rnd [ch3, 1 sc to next sc] x 3, ch6, 1 sc to next corner of prev rnd*, rep *-* across the rnd = 15 ch-spaces + 3 corners. End with 3 sl sts along first corner.

6th rnd: Ch5 + 1 sl st to first ch-st = 1st corner.

Ch3 + 1 sc to first ch-space – ch3, 1 sl st to first ch-st (= 1 picot), rep *-* until next corner. Ch5, and cont with picot same as before. Ch20 to next corner (= loop around toe). Cont with picot, and end with 1 sl st to first ch-st.

Ch130 to both 2 rem corners = cords.

Viking Bjørk

Dress

1407-2

Size:	S	M	L
Bust, approx.	88	96	104 cm
	34.6	38.8	41 in
Waist, approx.	79	84	94 cm
	31.1	33.1	37 in
Hips, approx.	92	98	106 cm
	36.2	38.6	41.8 in
Length, approx.	83	87	89 cm

32.7 34.3 35 in

ALTERNATIVE YARN: Viking Bjørk (90% cotton, 10% merino wool), Viking Alpaca Silk (50% alpaca , 50% silk), 50 g ball

Beige,. 507 9 10 11 balls

Circular needle and double pointed needles size 2 ½ and 3 mm – US 1 or 2 and 2 or 3 – UK/Canadian 13 or 12 and 11

Gauge: 25 sts = approx. 10 cm/4 in over St st using needles size 3 mm. **Check your gauge to ensure success.**

Pattern A:

First rnd: K1,*sl 1 st, 1, psso, K2tog, K6, K1, K6*, rep *-*, end with K5, K2tog.

Next rnd: Purl.

Using needles size 3 mm, cast on 306 – 323 – 340 sts. Work 2 rnds in Garter st, and after that in patt A (see above), rep patt A 4 times. Work 1 rnd in St st, and dec evenly across 18 – 19 – 20 sts (= 1 st in each panel). There is now 288 – 304 – 320 sts on a rnd. Work in patt B.

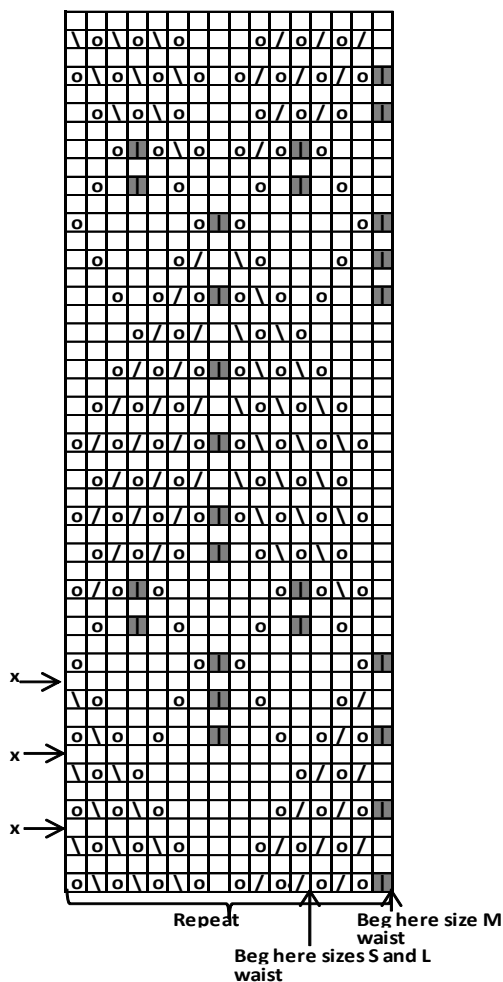
When patt B is ready, cont working in St st, and dec evenly across 1st rnd number of sts to be 232 – 244 – 264 sts.

Cont working in St st, and dec evenly across 8 – 7 – 8 sts approx. every 6 cm/2.4 in until there is 208 – 223 – 240 sts on a rnd, and work measures approx. 43-45-45 cm/16.9-17.7-17.7 in. Adjust number of sts to be for size M 224 sts. Place markers each side, 105 – 113 – 121 sts for front, and 103 – 111 – 119 sts for back.

Work in patt B. Change to needles size 2 ½ mm, and work 3 rills. Bind off rather tightly 103 – 111 – 119 sts for back. **Front:** Work back and forth in St st. Inc on 1st row for bust as foll: K19 – 20 – 20, inc 9 – 10 – 11 sts evenly across next 24 – 27 – 30 sts, K19 – 19 – 21, inc 9 – 10 – 11 sts evenly across next 24 – 27 – 30 sts, and end with K19 – 20 – 20. Cont working in St st, and dec 1 st at each edge inside 1 selvage st on each RS-row: K1 (= selvage st, knit every row), slip 1 st, K1, psso, work until 3 sts rem, K2tog, 1 selvage st. When front measures approx. 7 – 8 – 9 cm/2.8-3.1-3.5 in, bind off mid st. Finish each side separately. Cont working same as before, and dec 1 st both beg and end of every RS-row until 19 sts rem. Work in patt C for straps. Cont working until straps measure approx. 26 – 28 – 30 cm/10.2-11-1.8 in. Bind off. Work same for the other side.

Sew shoulder straps to the bound-off edge on back, 10 cm/4 in spaced apart. Fasten elastic with cross stitches on WS, on Garter st rnds below bust. Weave in all ends on WS.

Pattern B



□ = knit

▤ = Sl 1 st, K2tog, psso

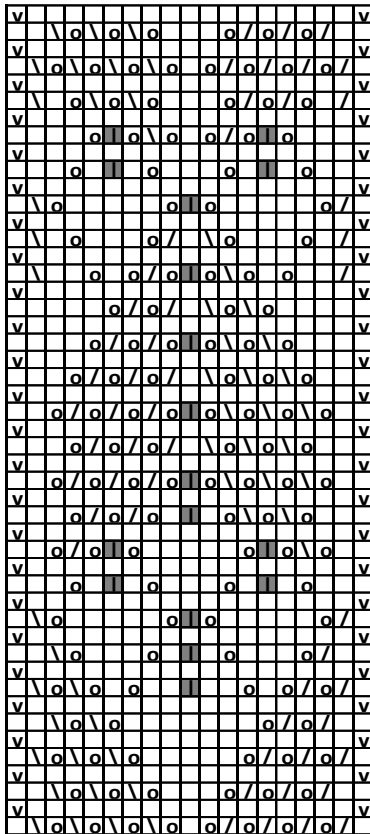
▥ = K2tog

▧ = Sl 1 st, K1, psso

◻ = 1 yo

x = last st on the rnd is part of beg of next rnd

Pattern C



Viking Bjørk

Poncho/Top

1407-3

Size:	S/M	L/XL	XXL
Bust:	100	110	120 cm
	39.4	43.3	47.2 in
Length:	69	70	70 cm
	27.2	27.6	27.6 in

ALTERNATIVE YARN: Viking Bjørk (90% cotton, 10% merino wool), Viking Alpaca Silk (50% alpaca, 50% silk), 50 g ball

Off-White, 502	8	9	10 balls
Beige, 507	5	5	6 balls
Light Grey, 513	4	4	6 balls

Circular needle and double pointed needles size 5 mm – US 8 – UK/Canadian 6

Gauge: 16 sts = approx. 10 cm/4 in over St st with double yarn using needles size 5 mm. **Check your gauge to ensure success.**

STRIPES! Poncho is worked with double yarn as foll:
 4 rows with 1 strand of beige and 1 strand of off-white – 2 rows with 1 strand of light grey and 1 strand of off-white,
 rep *-* throughout the work

BACK

Using needles size 5 mm and double yarn (1 strand off-white – 1 strand beige), cast on 135-143-151 sts. Work in patt I as charted over 28 first sts, after that rep patt over next 80-88-96 sts (see chart), and end with patt II (= 27 sts). Cot working back and forth with patt and stripes med striper until work measures approx. 16 cm/6.3 in. Cont as foll: Patt I over 28 sts – St st over 79-87-95 sts – P1 – patt II over 27 sts. Rep stripes and St st/patt same as before until work measures approx. 69-70-70 cm/27.2-27.6-27.6 in. Bind off.

FRONT

Work same as for front. When work measures approx. 59-60-60 cm/23.2-23.6-23.6 in, bind off mid 23 sts. Finish each side separately. Bind off at neck edge every 2nd row 1x3 sts, 2x2 sts, and 2x1 st = 47-51-55sts rem for shoulder. When work measures same as back, bind off.

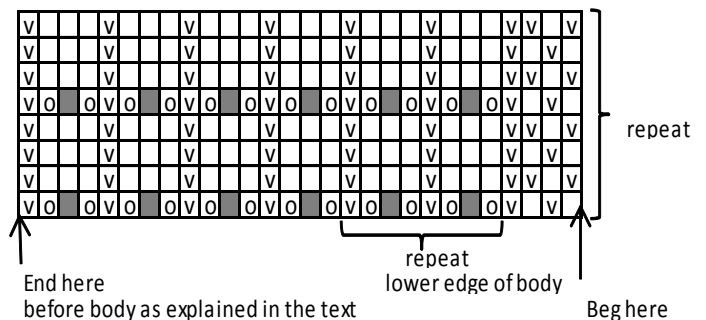
Work same for the other side, rev all shaping.

Finishing

Sew side seams along St st-panels on front and back (leave lace patt sides hang loose on each side). Leave approx. 26 cm/9.8 in for armholes. Sew shoulder seams.

Neck band: There is no neck band in the original model in photo, but if you wish, you can crochet sc-rnd with double yarn (1 strand off-white – 1 strand light grey) along neck edge. Use crochet hook size 5 mm.

PATTERN I, left side of the poncho



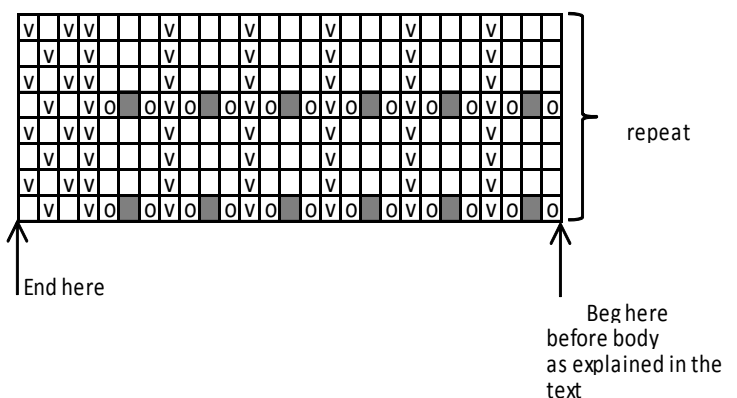
□ = knit (knit on RS, purl on WS)

▣ = purl (purl on RS, knit on WS)

○ = 1 yo

■ = sl 1 st, K2tog, psso

PATTERN II, right side of the poncho



Viking Bjørk

Top 1407-4

Size: S – M – L – XL

Bust: 88 – 98 – 106 – 115 cm
34.6 – 38.6 – 41.8 – 45.3 in

Length: 64 – 65 – 66 – 67 cm
25.2 – 25.6 – 26 – 26.4 in

ALTERNATIVE YARN: Viking Bjørk (90% cotton, 10% merino wool), Viking Alpaca Silk (50% alpaca, 50% silk) 50 g ball

Orange, 551 : 6 – 6 – 7 – 7 balls

Circular needle and double pointed needles size 2 ½ and 3 mm – US 1 or 2 and 2 or 3 – UK/Canadian 13 or 12 and 11
+ 9 studs for embellishment.

Gauge: 25 sts = approx. 10 cm/4 in over patt using needles size 3 mm. **Check your gauge to ensure success.**

Using needles size 2 ½ mm, cast on 111 – 123 – 133 – 145 sts. Work back and forth in K1,P1 rib approx. 5 cm/2 in = front. Work same for back. Change to needles size 3 mm, and cont working in St st. Knit last st from front tog with 1st st from back, and same at the other side = 220 – 244 – 264 – 288 sts on a rnd. Place markers each side, 111 – 123 – 133 – 145 sts for front, and 109 – 121 – 131 – 143 sts for back, and one markers around mid front st. Cont working in rnds in St st. When work measures approx. 10 cm/4 in, beg working in patt A mid front. Work until 5 sts rem before mid front marker. Inc 7 sts over next 11 sts (= 18 sts) = patt A. Cont working as established. When work measures approx. 46 cm/18.1 in (same for all sizes), divide work at side markers for armholes. Finish back first.

Back: 1 selvage st, sl 1 st, K1, psso, work until 3 sts rem, K2tog, end with 1 selvage st. Purl 1 row. Cont working in this way back and forth until 55 – 63 – 69 – 77 sts rem. Bind off.

Front: Bind off at armhole edges same as for back. When work measures approx. 52 – 53 – 54 – 55 cm/20.5-20.9-21.3-21.7 in, dec on WS row evenly across patt A 12 sts. Next row: Bind off 18 – 20 – 20 – 22 mid sts for neck edge. Finish each side separately.

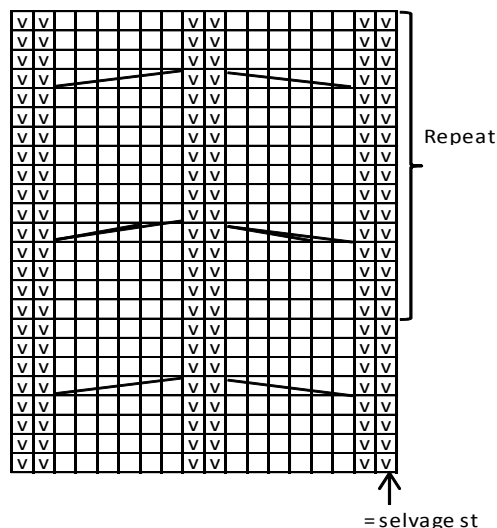
Bind off at neck edge 1x6 sts, 1x3 sts, 2x2 sts, and 3x1 st. Cont working until front has same number of dec for armholes as back, and there is 4 – 7 – 10 – 14 sts left for shoulder.

Work same for the other side, rev all shaping.

Finishing: Join shoulder seams. Crochet sc around armholes.

Collar: Beg from mid patt A. Using needles size 2½ mm, pick or knit up approx. 108 – 112 – 116 – 120 sts around neck edge. Purl 1 row (= WS), and inc evenly across number of sts to be 215 – 223 – 231 – 239 sts. Work back and forth in K1,P1 rib, and inc 1 st at each edge to 3rd st every row until there is altog. 251 – 259 – 267 – 275 sts on a row, and collar measures approx. 6 cm/2.4 in. Knit 1 row (= RS), and dec all purl-sts at the same time when you bind off. Use studs for embellishing the front cable.

Pattern A



☐ = Purl o RS, knit on WS

☐ = Knit on RS, purl on WS

☐ = Sl 3 sts on cn, and hold to back, K3, knit sts rom cn
☐ = Sl 3 sts on cn, and hold to front, K3, knit sts from cn

Viking Bjørk

Cardigan with short sleeves

1407-5

Size:	XS	S	M	L	XL
Bust:	92	98	105	111	118 cm
	36.2	38.6	41.4	43.7	46.4 in
Length:	47	48	49	50	51 cm
	18.5	18.9	19.3	19.7	20.1 in

**Viking Bjørk (90% cotton, 10% merino wool, superwash),
Viking Alpaca Silk (50% alpaca , 50% silk) 50 g ball**

Of-White, 502 :	3	3	3	4	4 balls
Orange, 551 :	2	2	2	2	2 balls
Beige, 507 :	1	1	1	1	1 ball

Circular needle size 2 ½ and 3 mm – US 1 or 2 and 2 or 3 – UK/Canadian 13 or 12 and 11
+ 3 buttons

Gauge: 25 sts = approx. 10 cm/4 in over St st using needles size 3 mm. **Check your gauge to ensure success.**

Cardigan is worked back and forth

Using needles size 2½ mm and orange yarn, cast on 235 – 251 – 267 – 283 – 299 sts. Work back and forth approx. 3 cm/1.2 in in K1,P1 rib. Slip first and last 5 sts on holders (= sts for front bands). Change to needles size 3 mm. Cont working back and forth. Inc 1 st beg and end of the row (= selvage sts). Place markers each side, 56 – 60 – 64 – 68 – 72 sts for each front, and 115 – 123 – 131 – 139 – 147 sts for back. Work in patt A, and after that in St st with white yarn until work measures approx. 23 – 24 – 25 – 26 – 27 cm/9.1-9.4-9.8-10.2-10.6 in. Work in patt A. After 2 rows, bind off 10 sts at each side for armholes (5 sts both sides of the markers). Finish back and fronts separately.

Back: Cont working in patt B. Bind off at each edge every 2nd

row 1x4 sts, 1x3 sts, and 2x1 st. Slip sts on holder (patt B should be ready now).

Right front: Cont working in patt B, and bind off at armhole edge same as for back.

Work same for left front, rev all shaping.

Yoke: Beg from right front with orange yarn. Work 1st row off patt C as foll: 42 – 46 – 50 – 54 – 58 m = right front, cast on with orange yarn 67 – 67 – 71 – 71 – 75 sts over armhole = armhole edge, work 87 – 95 – 103 – 111 – 119 sts for back, cast on with orange yarn 67 – 67 – 71 – 71 – 75 sts over the other armhole = armhole edge, and end with 42 – 46 – 50 – 54 – 58 sts for left front. There is now 305 – 321 – 345 – 361 – 385 sts on a row. Work now in patt C as charted.

Finishing:

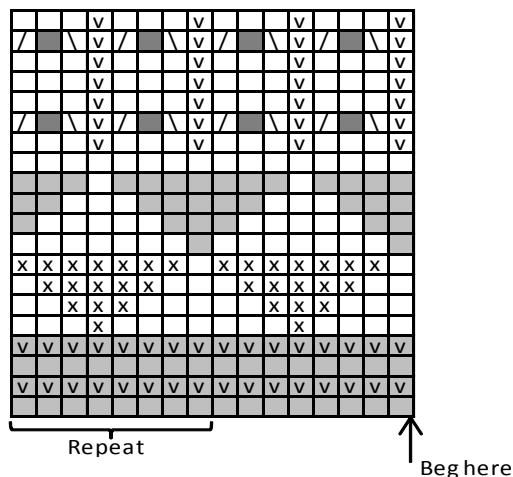
Left front band: Slip 5 sts from holder on needles size 2½ mm. Work in K1,P1 rib, but cast on 1 st to the edge facing the front (= for seam allowance). Take care that front band doesn't turn out to be too long. Slip sts on holder. Place markers for altog. 3 buttons, one at first orange rill, one on last row before neck band, and one in between them.

Right front band: Work same as for left front band, but make buttonholes inside 1 st from the edge according to the markers for buttons. Buttonhole: Bind off 2 sts. Next row: cast on 2 sts over the bound-off sts.

Weave in all ends on WS. Sew on buttons.

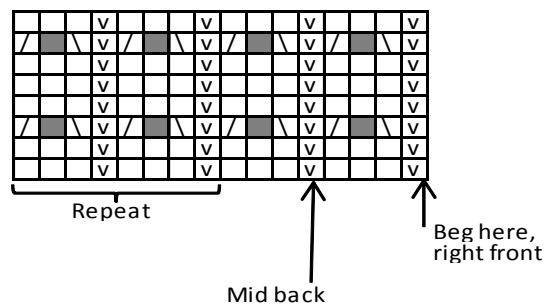
Neck band: Using needles size 2½ mm and orange yarn, work in rib right front band sts, then work St st over yoke sts, and rib over left front and sts. Cont working in K1,P1 rib over al sts until neck band measures approx. 1 ½ cm/0.6 in. Bind off in rib.

Pattern A

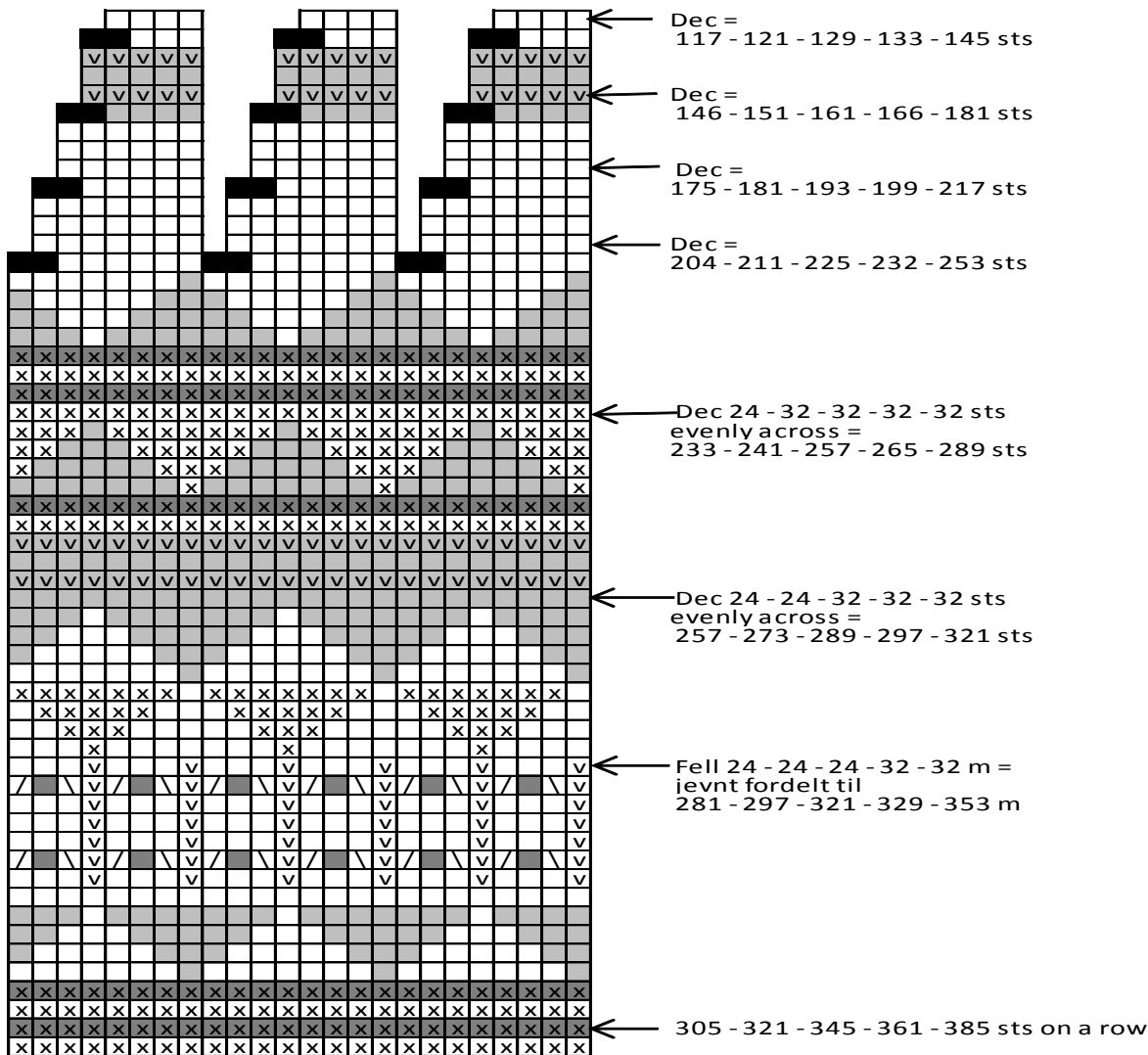


- = Beige, knit on RS, purl on WS
- ▼ = Beige, purl on RS, and knit on WS
- = Off-White, knit on RS, purl on WS
- ◻ = Off-White, purl on RS, knit on WS
- ✕ = Orange, knit on RS, purl on WS
- ⊗ = Orange, purl on RS, knit on WS
- ⧻ = K2tog
- ↘ = sl 1 st, K1, pssso

Pattern B



Pattern C



■ = K2tog

Viking Bjørk

Dress

1407-6

Size:	S	M	L
Bust:	88	96	104 cm
	34.6	38.8	41 in
Waist:	79	84	94 cm
	31.1	33.1	37 in
Hips:	92	98	106 cm
	36.2	38.6	41.8 in
Length, without fringes:	72	75	75 cm
	28.3	29.5	29.5 in

ALTERNATIVE YARNS: Viking Bjørk (90% cotton, 10% merino wool), Viking Alpaca Silk (50% alpaca, 50% silk), 50 g ball

Off-White, 502: 9 10 11 balls

Circular needle and double pointed needles size 2 ½ and 3 mm – US 1 or 2 and 2 or 3 – UK/Canadian 13 and 12 or 11

Gauge: 25 sts = approx. 10 cm/4 in over St st using needles size

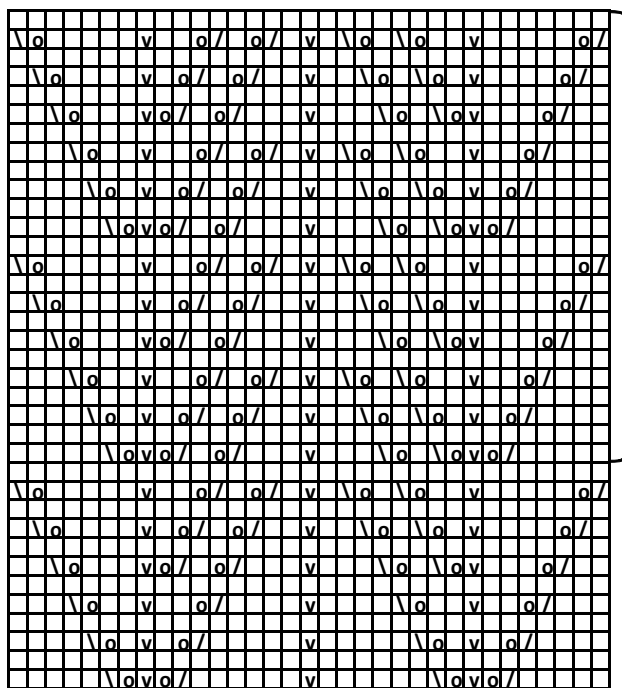
3 mm. **Check your gauge to ensure success.**

Using needles size 2 ½ mm, cast on 228 – 244 – 264 sts. Work 8 rnds in Garter st, **but** work after 4 rnds an eyelet rnd: *K2tog, 1 yo, K2*, rep *-* across the rnd. Adjust over last rnd number of sts for size M to be 246 sts. Place markers each side, 115 – 123 – 133 sts for front, and 113 – 123 – 131 sts for back. Beg from arrow on left side, and cont working in rnds as foll: St st over 3 – 4 – 6 sts, *patt A over 33 sts, St st over 5 – 8 – 11 sts*, rep *-* 6 times, and end with St st over 2 – 4 – 5 sts. Cont working as established, and same time dec 1 st end of each St st panel approx. every 5 ½ – 5 – 6 cm/2-2-2.4 in altog. 5 – 6 – 5 times, and there is 198 – 210 – 234 sts on a rnd. Cont working as established. When work measures 39-40-40 cm/15.4-15.7-15.7 in, inc 1 st end of each St st panel approx. every 4 – 3 – 3 cm/1.6-1.2-1.2 in until there is 222 – 240 – 264 sts on a rnd, and work measures 56-56-56 cm/ 22-22-22 in. Bind off 16 sts at each side (8 sts both sides of the side markers). Cast on 73 – 80 – 84 sts over the bound-off armhole sts. There is now 336 – 368 – 400 sts on a rnd. Change to needles size 2½ mm. Cont working in Garter st. After 1 cm/0.4 in, beg dec for yoke: *K14 – K2tog*, rep *-* across the rnd. Rep dec every 1 – 1 ½ - 1 ½ cm/0.4-0.6-0.6 in with 1 st less between dec each time until there is 210 – 230 – 225 sts on a rnd, and yoke measures approx. 8 – 10 – 12 cm/3.1-4-4.7 in. Bind off rather tightly.

Finishing: Tie approx. 40 cm/15.7 in long fringes with 4-folded yarn, one fringe to each hole in hem line (ready fringes measure

approx. 20 cm/7.9 in).
Weave in all ends on WS.

Pattern A



Repeat

- = knit
- ▣ = purl
- ◻ = 1 vo
- ▤ = K2tog
- ▥ = Sl 1 st, K1, pssso

Beg here

Viking Bjørk

Top with V-neck 1407-7

Size Woman

Bust: approx. 107 cm

42.2 in

Length: (hang the garment when measuring) approx. 75 cm
29.5 in

ALTERNATIVE YARN: Viking Bjørk (90 % cotton, 10% merino wool), Viking Alpaca Silk (50% alpaca, 50 % silk), 50 g ball

Beige, 507

7 balls

Circular needle or pair of knitting needles size 10 and 4 ½ mm – US 15 and 7 – UK/Canadian 000 and 7

Gauge:

Garter st, body: 11 sts = approx. 10 cm/4 in over Garter st with double yarn.

Garter st, bands: 18 sts = approx. 10 cm/4 in over Garter st with double yarn.

Check your gauge to ensure success.

Note:

Beg always a new ball at one side in order to avoid weaving in ends mid work.

Back

Using needles size 10 mm and double yarn, cast on 59 sts.
Work in Garter st, always knit first st of the row. Cont working until work measures approx. 75 cm/29.5 in. Bind off.

Front:

Work same as for back. When work measures approx. 55 cm/21.7 in, bind off mid st for V-neck. Finish each side separately.

Cont working back and forth in Garter st. Bind off at neck edge 1 st inside 1 selvage st every 2nd row altog. 10 times, and after that every 4th row until 16 sts rem for shoulder. When front measures same as back, bind off.

Work same for the other side, rev V-neck shaping.

Finishing

Join shoulder seams, 16 sts for each shoulder

Sew side seams, leaving approx. 15 cm/5.9 in splits on sides.

Leave approx. 30 cm/11.8 in for armholes.

Neck band:

Using needles size 4½ mm and double yarn, pick or knit up approx. 42 sts from each side of neck edge, and 38 sts from back = 122 sts. Place markers mid front, and on each shoulder. Work 6 rnds in Garter st, and dec 1 st (= K2tog) both sides of markers, every rnd mid front, and every 2nd rnd on shoulder. Bind off sts.

Armhole bands:

Using needles size 4½ mm and double yarn, cast on 102 sts.

Work 6 rnds in Garter st. Bind off sts.

Weave in all ends on WS.

Viking Bjørk

Top 1407-8

Size: S – M – L – XL

Bust: 88 – 96 – 104 – 112 cm

34.6 – 38.8 – 41 – 44.1 in

Length: 64 – 65 – 66 – 67 cm

25.2 – 25.6 – 26 – 26.4 in

Sleeve length: 10 – 10 – 11 – 12 cm

4 – 4 – 4.3 – 4.7 in

ALTERNATIVE YARN: Viking Bjørk (90% cotton, 10% merino wool), Viking Alpaca Silk (50% alpaca, 50% silk) 50 g ball

White, 500 : 7 – 8 – 8 – 9 balls

Circular needle and double pointed needles size 2 ½ and 3 mm – US 1 or 2 and 2 or 3 – UK/Canadian 13 or 12 and 11

Gauge: 25 sts = approx. 10 cm/4 in over patt using needles size 3 mm. **Check your gauge to ensure success.**

Pattern I

*4 purl rows, 4 rows in St st *, rep *-*

Using needles size 2 ½ mm, cast on 112 – 124 – 132 – 140 sts.
Work back and forth approx. 12 cm/4.7 in in K4,P4 rib = back.
Work same for another rib = front.

Slip both ribs on same circular needle size 3 mm. Place markers each side. There is now 224 – 248 – 264 – 280 sts on a rnd. Beg from front, St st over 52 – 58 – 62 – 66 sts, inc 8 sts over next 8 sts (= 16 sts) = 1 cable mid front, St st over 164 – 182 – 194 – 206 sts. There is now 232 – 256 – 272 – 288 sts on a rnd. Work as established. When work measures approx. 40 cm/15.7 in, bind off 16 sts each side for armholes (8 sts both sides of the

markers).

Sleeves: Using needles size 2½ mm, cast on 88 – 96 – 96 – 104 sts. Work in rnds: K2, *P4, K4*, rep *-*, and end with K2. Place a marker mid under sleeve. Cont working in rib as established until work measures approx. 10 cm/4 in. Bind off 16 sts mid under sleeve (8 sts both sides of the marker). Work same for the other sleeve.

Yoke: Knit all pieces on same circular needle size 3 mm, sleeves over the bound-off armhole sts. Knit tog 1 st from body and 1 st from sleeve (= mid st for raglan-dec). There is now 340 – 380 – 396 – 428 sts on a rnd. Cont working in rnds in St st and cable patt on front, St st on back, and patt I over both sleeves. Beg raglan-dec. Work until 2 sts rem before mid st, sl 1 st, K1, psso, P1, K2tog. Rep dec at each 4 seam line every 2nd rnd until 132 – 132 – 140 – 140 sts rem. Knit 1 rnd over all sts, and dec 8 sts evenly across the cable, and 4 sts across the back. Change to needles size 2½ mm, and work in rnds approx. 2 cm/0.8 in in K4,P4 rib. Bind off in rib.

Finishing: Sew under arm seams.

Viking Bjørk

Beach dress

1407-9

Size: S M L

Bust: 96 110 125 cm

38.8 – 43.3 – 49.2 in

Length: 88 90 92 cm

34.6 – 35.4 – 36.2 in

Sleeve length: 27 28 29 cm

10.6 – 11 – 11.4 in

ALTERNATIV: Viking Bjørk (90% cotton, 10% merino wool), Viking Alpaca Silk (50% alpaca, 50% silk) 50 g ball

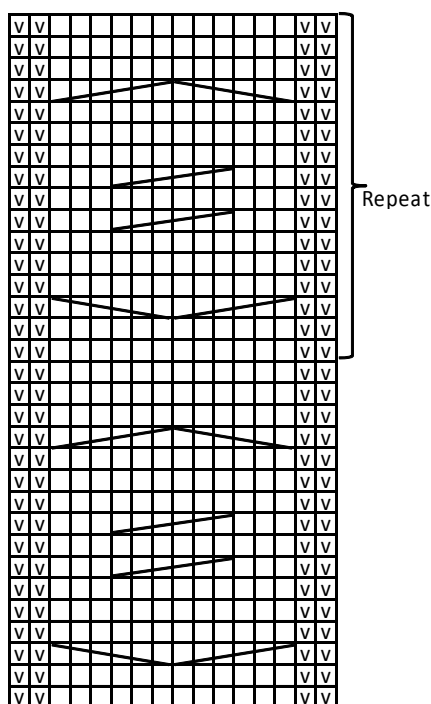
Light Pink, 565 : 7 – 7 – 8 balls

Circular needle size 4 and 5 mm – US 6 and 8 – UK/Canadian 8 and 6

Crochet hook size 3 mm – US C/2 or D/3 – UK/Canadian 11

Gauge: 20 sts = approx. 10 cm/4 in over patt using needles size 4 mm. **Check your gauge to ensure success.**

Cable patt



■ = Purl

□ = Knit

■ ■ ■ = Slip 3 sts on cn, and hold to back, K3, knit sts from cn

■ ■ ■ = Slip 3 sts on cn, and hold to front, K3, knit sts from cn

Lace patt:

1st row: K1, (= selvage st)* 1 yo, K2tog*, rep *-* across the row, end with K1 (= selvage st).

Rep 1 st row on every row, both on RS and WS.

Back

Using needles size 5 mm, cast on 100 – 110 – 120 sts. Work back and forth in lace patt. Always knit the first st. Change after 2 rows to needles size 4 mm. Cont working in patt until work measures approx. 88 – 90 – 92 cm/34.6-35.4-36.2 in. Bind off rather loosely.

Front

Work same as for back. When work measures approx. 78 – 79 – 80 cm/30.7-31.1-31.5 in, bind off 32 – 34 – 36 mid sts for neck edge. Finish each side separately. Bind off at neck edge every 2nd row 2x2sts. When front measures same as back, bind off. Work same for the other side, rev neck shaping.

Sleeves

Using needles size 5 mm, cast on 64 – 72 – 80 sts. Work back and forth in Lace patt. Always knit the first st. Change after 2 rows to needles size 4 mm. Cot working in patt until work measures approx. 27 – 28 – 29 cm/10.6-11-11.4 in. Bind off rather loosely.

Finishing

Sew sleeve seams. Sew side seams, leaving approx. 16 – 18 – 20 cm/6.3-7.1-7.9 in for armholes, and approx. 12 cm/4.7 in for splits on each side. Sew shoulder seams. Sew on sleeves. Crochet sc around lower edge, and sleeve edges.

Neck band

Crochet sc around neck edge.

Viking Bjørk

Shawl

1407-10

Size	Woman
Mid back, approx.	60 cm
	23.6 in

ALTERNATIVE YARN: Viking Bjørk (90 % cotton, 10% merino wool), Viking Alpaca Silk (50% alpaca, 50 % silk), 50 g ball

White, 500

5 alls

Circular needle size 3 mm – US 2 or 3 –UK/Canadian 11
Crochet hook size 3 mm – US C/2 or D/3 – U/Canadian 11

Gauge: 25 sts = approx. 10 cm/4 in over St st using needles size 3 mm. **Check your gauge to ensure success.**

Bubble patt, back and forth:

Rows 1-5 : St st (first row = purl).

Row 6 (always from RS) : St st over 1 st , *count 5 sts downwards, insert tip of RH needle into the st, knit this st, and let 4 sts over it unravel (= loosen up the sts) = drop st, K3*, rep *-*, (check number of knit-sts before and after mid st = there should be same number of sts each side).

Rows 7-11 : St st

Row 12 (always from RS) : Work same as for row 6, but: but make drop-st in the center of prev. bubble, so that bubbles will form a diamond shaped grid.

Rep these 12 rows.

Inc: Pick up strand between sts, and slip on LH needle, ktbl.

Beg from neck, and work downwards:

Using needles size 3, cast on 5 sts. Place a marker round mid st. Work back and forth in Garter st, and inc both sides mid st and 1 st at each edge every 2nd row = 4 sts increased on a row. Work altog 3 rills = 17 sts, beg working in patt (1st row = WS), **but** work Garter st over first and last 3 sts, and purl midst on RS, and knit on WS, inc same as before. (**Note:** inc at sides inside 3selvage sts). Work in patt over inc sts. **Note:** Patt must always be same both sides of the mid st.

When work measures approx. 60 cm/ 23.6 in, measured mid back (or desired length), bind off rather loosely.

Crochet abbreviations:

ch (st) = chain stitch, sc = single crochet, dc = double crochet

Using hook size 3 mm, crochet along slanting sides as foll: Beg from right corner, and crochet sc-row along the slanting edges. Turn, and work as foll: Ch2, 3 tr and 1 dc into same st, skip 1 st, 1 sc, [1 dc, 3 tr, 1 dc into next st, skip 1 st, 1 sc] rep [-] across the row. Break yarn, and draw through last loop.

You can wear the shawl two ways (RS or WS). Weave in all ends on WS very carefully.

Viking Bjørk

Long top

1407-11

Size:	S	M	L	XL
Bust:	88	93	102	110 cm
	34.6	36.6	40.2	43.3 in
Length, back:	76	78	80	80 cm
	29.9	30.7	31.5	31.5 in

ALTERNATIVE YARN: Viking Bjørk (90 % cotton, 10% merino wool), Viking Alpaca Silk (50% alpaca, 50 % silk), 50 g ball

Pink, 563 8 9 9 10 balls

Crochet hook size 4 mm – US 6 –UK/Canadian 8

Gauge: 18 hdc using crochet hook size 4 mm = approx. 10 cm/4 in. **Check your gauge to ensure success.**

Crochet abbreviations:

sc = single crochet, ch (st)= chain stitch, hdc= half double crochet, dtr= double treble, dc = double crochet

NB! All sizes: When working in patt, dec 1 st at each side (= crochet 2 sts tog). Rep dec approx. every 6-4 ½ - 4 ½ - 4 ½ cm/2.4-1.8-1.8-1.8 in altog. 6-8-8-8 times. Beg dec when work measures approx. 20-20-21-22 cm/7.9-7.9-8.3-8.7 in (incl rib).

Beg from back

Using needles size 3mm, cast on 92-100-108-116 sts. Work back and forth approx. 12 cm/4.7 in as foll: 2 rows in St st – 2 rows in Rev St st. Bind off.

Cont as foll: Beg with 1 sl st, ch1 = 1st sc, 1 sc to each bound-off st = altog. 93-101-109-117 sc. Turn, and cont as foll:

2nd row: Ch1 = 1st sc. 1 sc to each st. Turn.

3rd row: Work same as 2nd row. Turn.

X 4th row: Ch3 = 1st dc.*Ch1 – skip 1 st – 1 dc*, rep *-* across the row, end with 1 dc.

5th row: Work same as 2nd row.

6th row: Work same as 4th row.

7th – 14th row: Work same as 2nd row.

15th row: Work same as 4th row.

16th – 18th row: Work same as 2nd row.

19th row: Ch5 = 1st dc + 1 ch-st. *Skip 1 st – 1 tr to next st + ch1*, rep *-* across the row, end with 1 tr. Turn.

20th row: Work same as 2nd row.

21st row: Work same as 15th row.

22th – 29th row: Work same as 2nd row X.

Note! Don't forget to dec at sides.

Rep X-X (4th – 29th row) until work measure approx. 56-57-58-59 cm/22-22.4-22.8-23.2 in, and there is 81-85-93-101 sts on a row. Leave now 6 sts for armholes at each side (= work 6 sl sts over the sts each side) = 69-73-81-89 sc rem. Cont working back and forth until work measures approx. 76-78-80-82 cm/29.9-30.7-31.5-32.5 in. Break yarn, and draw through last loop.

Front

Work in rib same as for back. Cont working in crochet patt same as for back. When work measures 66-68-70-70 cm/26-26.8-27.6-27.6 in, leave mid front 27-27-29-29 sts for neck edge. Finish each side separately, and bind off at neck edge as foll: 1x3 sl sts – 1x2 sl st, and 1-1-2-2x1 sl st. Cont working in patt over rem 15-17-19-23 sts until front measures same as back. Work same for the other side, rev all shaping.

Finishing

Sew shoulder seams and side seams, leaving splits to the knitted borders.

Neck band: Crochet 1 sc-rnd around neck edge.

1st rnd: Ch3 = 1st dc.*Ch1 – skip 1 st – 1 dc*, rep *-* across the rnd, end with 1 sl st to 3rd ch-sts beg of rnd.

2nd rnd: Ch1 = 1 sc. 1 sc to each st across the rnd, end with 1 sl st to 1st ch-st beg of rnd. Break yarn, draw through last loop.

Armhole band: Work same as for neck band.

Viking Bjørk

Sweater

1407-12

Size: XS/S M L/XL

Bust: 93 – 116 – 139 cm

36.6 – 45.7 – 50.7 in

Length, back: 58 – 58 – 58 cm

22.8 – 22.8 – 22.8 in

Length, front: 50 – 50 – 50 cm

19.7 – 19.7 – 19.7 in

Sleeve length: 28 – 30 – 32 cm

11 – 11.8 – 12.6 in

ALTERNATIVE YARN: Viking Bjørk (90% cotton, 10% merino wool), Viking Alpaca Silk (50% alpaca, 50% silk), 50 g ball

Light Blue, 520 : 8 – 9 – 10 balls

Circular needle size 3 mm – US 2 or 3 – UK/Canadian 11

Gauge: 25 sts = approx. 10cm/4 in over St st using needles size 3 mm. **Check your gauge to ensure success.**

Back

Using needles size 3 mm, cast on 116 – 145 – 174 sts. Work back and forth 20 rows in Garter st. Always knit the first st. Work in patt A as charted. Rep patt A 6 – 6 – 6 times in height. Bind off.

Front

Using needles size 3 mm, cast on 116 – 145 – 174 sts. Work back and forth 20 rows in Garter st. Always knit the first st. Work in patt A as charted. When you have rep patt A 3 – 4 – 4 times in height, slip 30 – 41 – 42 mid sts on holder for neck edge. Finish each side separately. Bind off at neck edge every 2nd row 1x4 sts, 1x3 sts, 1x2 sts, and 1x1 st. End with a complete square. There is now 5 – 5 – 5 squares in height.

Sleeves

Using needles size 3 mm, cast on 96 – 100 – 104 sts. Work back and forth 20 rows in Garter st. Always knit the first st. Work in patt A until work measures approx. 28 – 30 – 32 cm/11-11.8-12.6 in. Bind off.

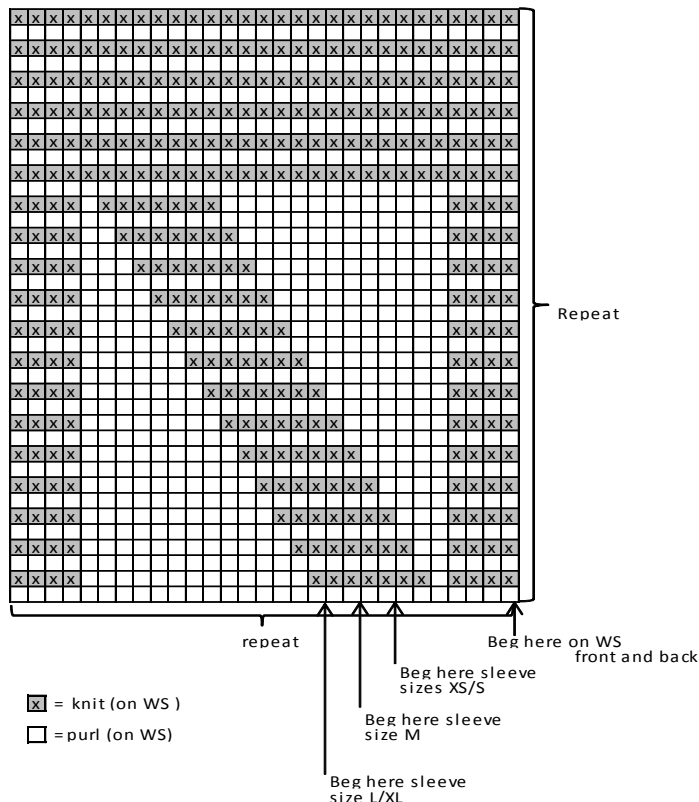
Finishing

Sew sleeve seams. Sew side seams leaving approx. 19-20-21 cm/7.5-7.9-8.3 in for armholes, and approx. 2 cm/0.8 splits on each side (back is 1 square longer than front). Check that square match on sides. Sew shoulder seams. Sew on sleeves.

Neck band

Using needles size 2½ mm, pick or knit up approx. 116 – 138 – 140 sts around neck edge. Work 6 rnds in Garter st. Bind off.

Pattern A = patt from WS



Viking Bjørk

Top

1407-13

Size	S	M	L
Bust:	110	119	126 cm
	43.3	42.9	49.6 in
Length:	42	45	48 cm
	16.5	17.7	18.9 in
Sleeve length:	6	6	6 cm
	2.4	2.4	2.4 in

ALTERNATIVE YARN: Viking Bjørk (90% cotton, 10% merino wool), Viking Alpaca Silk (50% alpaca, 50% silk) 50 g ball

Off-White, 502 : 5 – 6 – 7 balls

Circular needle size 2 ½ and 3 mm – US 1 or 2 and 2 or 3 – UK/Canadian 13 or 12 and 11

Gauge: 25 sts = approx. 10 cm/4 in over St st using needles size 3 mm. **Check your gauge to ensure success.**

Using needles size 2 ½ mm, cast on 272 – 296 – 320 sts. Work in rnds approx. 4 cm/1.6 in in K1,P1 rib. Change to needles size 3 mm. Work in patt A. Place markers each side, 137 – 149 – 161 sts for front, and 135 – 147 – 159 sts for back. When work measures approx. 24 – 26 – 28 cm/9.4-10.2-11 in, divide work at sides for armholes, and finish first back.

Back: Cast on 1 st at each edge (= purl-st in the patt). Cont working back and forth in patt A until work measures approx. 42 – 45 – 48 cm/16.5-17.7-18.9 in. Bind off.

Front: Cont working back and forth in patt A until work measures approx. 34 – 37 – 40 cm/13.4-14.6-15.7 in, bind off 19 – 21 – 23 mid sts. Finish each side separately. Bind off at neck edge every 2nd row 1x10 sts, 1x5 sts, 1x3 sts, 1x2 sts, and 1x1 st.

When front measures same as back, bind off.

Work same for the other side, rev all shaping.

Finishing: Join shoulder seams, 38 – 43 – 48 sts for each shoulder.

Armhole bands: Using needles size 2½ mm, knit or pick up approx. 90 – 96 – 102 sts. Work in rnds in rib until armhole band measures approx. 6 cm/2.4 in. Bind off in rib.

Neck band: Using needles size 2½ mm, pick or knit up approx. 132 – 136 – 140 sts. Work in rnds approx. 1½ cm/0.6 in in K1,P1 rib. Bind off in rib.

Using needles size 3 mm, cast on 5 sts. Place a marker round mid st. Work back and forth in Garter st, and inc 1 st both sides of mid st and 1 st at each edge every 2nd row = 4 sts increased on row. Work altog 3 rills = 17 sts, beg working in patt A (= 1st row = WS), **but** work Garter st over first and last 3 sts, and purl mid st on RS, and knit on WS, inc same as before (**Note:** inc at sides inside 3 selvage sts). Work in patt over inc sts. **Note:** Patt must always be same on both sides of the mid st.

When work measures approx. 60 cm/23.6 in, measured mid back (or desired length), bind off rather loosely.

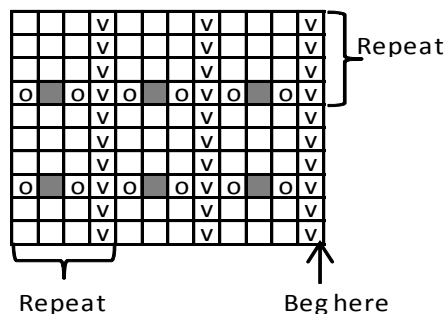
Crochet abbreviations:

ch (st) = chain stitch, sc = single crochet, dc = double crochet

Using hook size 3 mm, crochet along slanting sides as foll: Beg from right corner, and crochet sc-row along the slanting edges. Turn, and work as foll: Ch2, 3 tr and 1 dc into same st, skip 1 st, 1 sc, [1 dc, 3 tr, 1 dc into next st, skip 1 st, 1 sc] rep [-] across the row. Break yarn, and draw through last loop.

You can wear the shawl two ways (RS or WS). Weave in all ends very carefully on WS.

Pattern A



□ = Knit on RS, purl on WS

▣ = Purl on RS, knit on WS

○ = 1 yo

■ = Slip 1 st, K2, pssso

Viking Bjørk

Shawl

1407-14

Size Woman
Mid back, approx. 60 cm
23.6 in

ALTERNATIVE YARN: Viking Bjørk (90 % cotton, 10% merino wool), Viking Alpaca Silk (50% alpaca, 50 % silk), 50 g ball

Beige, 507

5 balls

Circular needle size 3 mm – US 2 or 3 – UK/Canadian 11

Crochet hook size 3 mm – US C/2 or D/3 – UK/Canadian 11

Gauge: 25 sts = approx. 10 cm/4 in over St st using needles size 3 mm. **Check your gauge to ensure success.**

Patt A, back and forth:

Rows 1-5 : St st (first row = purl).

Row 6 (always RS): St st over 1 st, *count 5 sts downwards, insert tip of RH needle into the st, knit this st, and let 4 sts over it unravel (= loosen up the sts) = drop-st, K3*, rep *-* (check number of knit-sts before and after mid st = there should be same number of sts each side).

Rep these 6 rows.

Inc: Pick up strand between sts, and slip on LH needle, ktbl

Beg from neck, and work downwards.