

# Viking Merino Soft 1404-1

## Cardigan, hat, socks, mittens, and scarf

Size: 1-3/6-9-12-18 months -2/4 yrs

Chest: 41-45-50-54-58-63cm

16.1-17.7-19.7-21.3-22.8-24.8 in

Length: 21-24-28-30-32-34 cm

8.3-9.4-11-11.8-12.6-13.4 in

Sleeve length: 16-19-22-24-25-26 cm

6.3-7.5-8.7-9.4-9.8-10.2 in

**ALTERNATIVE YARNS:** Viking Merino Soft (100% Merino Wool-Superwash) Viking Baby ull (100% merino wool), Viking Alpaca Fine (85% Superfine Alpaca, 15% Highland wool), 50 g ball

### Whole set

Red, 750: 2-2-3-3-4-4 balls

White, 700: 1-1-2-2-2-2 balls

Circular needle and double pointed needles size 2½ and 3 mm – US 1 or 2 and 2 or 3 - UK/Canadian 13 or 12 and 11 + 4-4-5-5-5-6 buttons

**Gauge:** 28 sts = approx. 10 cm/4 in over St st using needles size 3 mm. **Check your gauge to ensure success.**

When working in a patt with 2 clr, it's important to maintain the order of yarns over your finger. Always hold the darker clr in front throughout the whole project.

### CARDIGAN

Using needles size 2½ mm and red yarn, cast on 127-139-151-167-179-191 sts. Work back and forth 2-2-3-3-3-3 cm/0.8-0.8-1.2-1.2-1.2-1.2 in in K1,P1 rib. Make a buttonhole after 1-1-2-2-2-2 cm/0.4-0.4-0.8-0.8-0.8-0.8 in (left edge for boy, right edge for girl) 3-3-3-4-4-4 sts from the edge (Buttonhole: Bind off 2 sts. Next row: Cast on 2 sts over the bound-off sts). Slip first and last 9-9-9-11-11-11 sts on holder (= sts for front bands). Change to needles size 3 mm. Work 1 rnd in St st, and cast on 4 sts at the end of the row (= sts to be cut open afterwards, not incl in the number of sts) = 109 – 121 – 133 – 145 – 157 – 169 sts on a rnd. Work in patt I as charted. Place markers at each side, 57-63-69-75-81-87 sts for back, and 26-29-32-35-38-41 sts for both fronts. When patt I is ready, cont working in patt II until work measures approx. 13-16-19-20-22-23 cm/5.1-6.3-7.5-7.9-8.7-9.1 in (end with a red stripe). Work in patt III as charted. When patt III is ready, cont working in patt IV until the end. When work measures 18-21-24-26-28-29 cm/7.1-8.3-9.4-10.2-11-11.4 in, bind off mid front 16-18-18-18-20-20 sts for neck edge (incl 4 extra sts). Cont working back and forth. Bind off at edge every 2<sup>nd</sup> row 1x4-4-5-5-5-5 sts, 1x3 sts, 1x2 sts, and 1-1-1-2-2-2x1 st. When work measures the given length, bind off.

**Sleeves:** Using needles size 2½ mm and red yarn, cast on 38-38-40-42-44-46 sts. Work 3-3-4-4-4-5 cm/1.2-1.2-1.6-1.6-1.6-2 in in K1,P1 rib. Change to needles size 3 mm. Cont working in St st, and inc evenly across 1<sup>st</sup> rnd number of sts to be 41-43-45-47-49-51 sts. Cont working in rnds in patt I as charted. When patt I is ready, cont in patt II until the end, **but** place a marker mid under sleeve. Inc 1 st both sides of the marker approx. every 2½ - 2 - 1½ - 1½ - 1½ - 1½ cm/1-0.8-0.6-0.6-0.6-0.6 in until there is altog. 51-57-67-73-73-79 sts on a rnd. When sleeve measures approx. 16-19-22-24-25-26 cm/6.3-7.5-8.7-9.4-9.8-10.2 in, turn work inside out. Work 5 rnds in St st for seam allowance. Bind off.

**Finishing:** Dampen pieces slightly from WS. Sew 2 dense zigzag seams around armholes (measure width from sleeve top), and mid front. Cut open between the seams. Sew normal zigzag over cut edges. Join shoulder seams, 10-12-14-16-18-21 sts for

each shoulder.

**Front bands:** Slip 9-9-9-11-11-11 front band sts without buttonhole over needles size 2½ mm. Cast on 4 new sts to the edge facing the body (= seam allowance). Work St st over the cast-on sts. Cont working until front band measures approx. 3-3-4-4-4-5 cm/1.2-1.2-1.6-1.6-1.6-2 in less than total length (it's important that front band doesn't turn out to be too long). Bind off seam allowance sts, and slip rem 9-9-9-11-11-11 rib sts on holder. Work same for the other front band, but make 4-4-5-5-5-6 buttonholes evenly spaced apart. First buttonhole is already made, and last one will be made on last row before neck band.

**Neck band:** Using needles size 2½ mm and red yarn, pick or knit up sts from neck edge: Beg from RS, right front edge. Slip sts from holder over needle, pick up approx. 20-21-24-25-26-28 sts from front, 37-39-41-43-45-45 sts from back, 20-21-24-25-26-28 sts from left front, and slip front band sts over needle = 95-99-107-115-119-123 sts on a row. Work 1 row in St st (not over front bands). Cont working in K1,P1 rib. When neck band measures approx. 2-2-2-2-2½-2½ cm/0.8-0.8-0.8-0.8-1-1 in, bind off in rib first and last 9-9-9-11-11-11 sts. Cont working back and forth over rem sts until neck band measures approx. 4-4-4-4-5-5 cm/1.6-1.6-1.6-1.6-2-2 in. Bind off rather loosely in rib. Fold neck band in double, and sew on WS.

### Finishing

Sew on front bands. Sew seam allowances over cut edges.

Sew on sleeves. Sew seam allowances over cut edges. Weave in all ends on WS.

### HAT

Using needles size 2½ mm and red yarn, cast on 96-96-96-108-108-120 sts. Work 4 rnds in K1,P1 rib. Change to needles size 3 mm. Cont working in St st and in patt III as charted. When patt III is ready, knit 1 rnd with red yarn. Cont working in K1,P1 rib until hat measures approx. 12-12-13-13-13-14 cm/4.7-4.7-5.1-5.1-5.1-5.5 in. Turn work inside out. Cont working in St st and in patt IV until work measures 21-22-23-24-25-26 cm/8.3-8.7-9.1-9.4-9.8-10.2 in, measured from cast-on edge. Next rnd: Knit all sts tog in pairs. Knit 3 rnds without dec. Rep dec 1 more time. Knit 3 rnds without dec. Rep dec again = 12-12-12-14-14-15 sts rem on a rnd. Break yarn, thread through rem sts, tighten the yarn, and weave in on WS.

### SOCKS

Using needles size 2½ mm and red yarn, cast on 40-42-44-44-46-48 sts. Work in rnds 8 cm/3.1 in in K1,P1 rib. Change to needles size 3 mm. Work heel over back 20-21-22-22-23-24 sts: Work back and forth. Knit until 1 st rem at one side, turn. Purl until 1 st rem on the other side, turn. Work 1 st less each time until 6-7-6-6-7-8 mid sts rem. Turn, and work 1 st more each time, but pick up the strand between sts over needle tbl before turning, and knit tog with next st in order to avoid holes in the heel. When you have returned all the sts back to work again, cont working in rnds in St st over all sts. Cont working until sock measures approx. 6-7-8-9-10-13 cm/2.4-2.8-3.1-3.5-4-5.1 in, or desired length before dec.

**Beg dec:** Place markers each side, same number of sts for each side. Dec 1 st both sides of the markers every 2<sup>nd</sup> rnd 1-1-2-2-2-2 times, and then every rnd until 12-10-12-12-10-12 sts rem. Break yarn, thread through rem sts, tighten the yarn, and weave in on WS.

Work same for the other sock.

### MITTENS WITHOUT THUMB

Using needles size 2½ mm and red yarn, cast on 36-38-38-40-42-44 sts. Work in rnds 5-5-5-6-6-6 cm/2-2-2-2.4-2.4-2.4 in in K1,P1 rib. Change to needles size 3 mm. Work 1 rnd in St st, and inc evenly across number of sts to be 44-44-48-48-52-56 sts. Cont working in St st until work measures approx. 10-10-11-12-



Cont working in patt I as charted. When patt I is ready, cont in patt II until the end. Place **same time** a marker mid under sleeve. Inc 1 st both sides of the marker approx. every 2 - 2 - 2 - 1 ½ - 1 ½ - 1 ½ cm/0.8-0.8-0.8-0.6-0.6-0.6 in until there is altog. 57-61-67-73-79-85 sts on a rnd. When sleeve measures 18-21-24-26-28-31 cm/7.8-8.3-9.4-10.2-11-12.2 in, turn work inside out. Work 5 rnds in St st for seam allowance. Bind off.

**Finishing:** Dampen pieces slightly from WS. Sew 2 dense zigzag seams around armholes (measure width from sleeve top), and mid front. Cut open between seams. Sew normal zigzag over cut edges. Join shoulder seams, 12-15-16-18-21-24 sts for each shoulder.

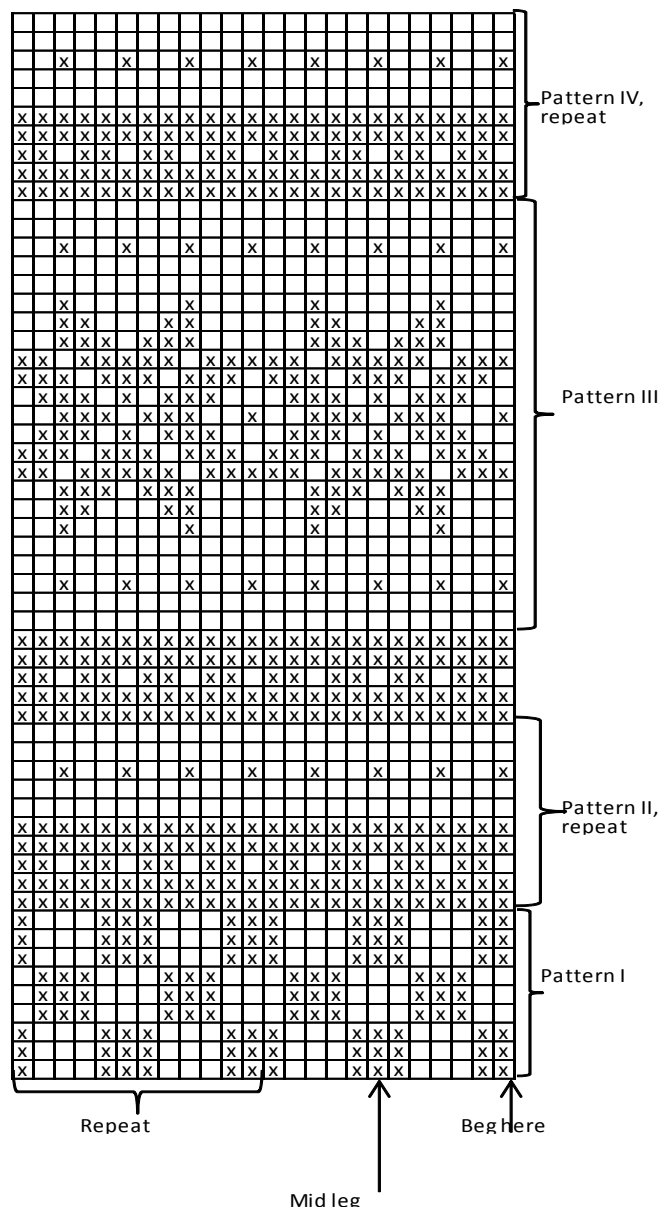
**Right front band:** Cast on with blue yarn 9 sts. Work back and forth K1,P1 rib over first 5 sts, and St st over 4 last sts (= seam allowance). Cont working as established until front band reaches neck edge. Bind off 4 seam allowance sts.

**Left front band:** Work same as for right front band, but in reverse. Make 5-5-6-6-7-7 buttonholes. Make first buttonhole after approx. 2 cm/0.8 in, and last below neck edge, rem evenly spaced apart.

**Neck band:** Using needles size 2½ mm and blue yarn, pick or knit up sts from neck edge: Beg from RS right front edge, slip front band sts over needles, pick up approx. 21-24-25-26-28-30 sts from front, 39-39-43-45-45-45 sts from neck, 21-24-25-26-28-30 sts from left front, and slip front band sts over needles. There is now 91-97-101-105-111-115 sts on a row. Work 1 row in St st (not over front band sts). Cont working back and forth in K1,P1 rib until neck band measures approx. 2-2-2-2-2 ½-2 ½ cm/0.8-0.8-0.8-0.8-1-1 in. Bind off in rib.

**Finishing:** Sew on front bands. Sew seam allowance over cut edges.

Sew on sleeves. Sew seam allowance over cut edges. Weave in all ends on WS. Sew on buttons.



□ = White

⊠ = Blue

## Viking Merino Soft

### Sweater and pants

1404-3

Size: 3/6 9/12 18/24 months

Chest 50 57 64 cm

19.7 22.4 25.2 in

Length 25 30 36 cm

9.8 11.8 14.2 in

Sleeve length 20 24 28 cm

7.9 9.4 11 in

**ALTERNATIVE YARNS:** Viking Baby ull (100 % merino wool), Viking Alpaca Fine ( 85% Superfine Alpaca, 15% Highland wool), Viking Merino Soft ( 100% Merino wool, superwash), 50 g ball

#### Sweater

Grey, 715 :	3	3	4 balls
White, 700 :	2	2	3 balls
Yellow, 745 :	1	1	1 ball
Black, 703:	1	1	1 ball

#### Pants

Grey, 715:	2	2	3 balls
------------	---	---	---------

Circular needle size 2 ½ and 3 mm – US 1 or 2 and 2 or 3 – UK/Canadian 13 or 12 and 11

**Gauge:** 28 sts = approx. 10 cm/4 in over St st using needles size 3 mm. **Check your gauge to ensure success.**

When working in patt with 2 clrs, it's important to maintain the order of yarns over your finger. Always hold the darker clr in front throughout the whole project.

Using needles size 2½ mm and yellow yarn, cast on 140-160-180 sts. Work in rnds 2-3-3 cm/0.8-1.2-1.2 in in K1,P1 rib. Change to needles size 3 mm. Cont working in St st and patt I as charted. When work measures approx. 13-16-21 cm/5.1-6.3-8.3 in, place markers each side, 70-80-90 sts for both back and front. Cont working in patt II (end with a grey stripe). When patt II is ready, cont working in patt III until work measures 25-30-36 cm/9.8-11.8-14.2 in.

**Sleeves:** Using needles size 2½ mm and yellow yarn, cast on 40-42-46 sts. Work in rnds 2-3-3 cm/0.8-1.2-1.2 in in K1,P1 rib. Change to needles size 3 mm. Cont working in St st and patt I. Inc evenly across 2<sup>nd</sup> rnd number of sts to be 49-53-65 sts. Place a marker beg of rnd = mid under sleeve. Inc 1 st both sides of the marker approx. every 1½ cm/0.6 in until there is 69-79-97 sts on a rnd. When sleeve measures 20-24-28 cm/7.9-9.4-11 in (or desired length), turn work inside out. Work with basic clr 5 rnds in St st for seam allowance. Bind off.

**Finishing:** Dampen pieces slightly from WS. Sew 2 dense zigzag seams around armholes. Cut open between the seams. Sew normal zigzag over cut edges. Join shoulder seams, 16-20-22 sts for each shoulder.

**Neck band:** Sew a curving marker thread for neck edge, approx. 4-4-5 cm/1.6-1.6-2 in below upper edge. Using needles size 2½ mm and yellow yarn, pick or knit up approx. 58-62-68 sts along neck edge (check that patt is same both sides of the neck edge) + sts from back = 96-102-114 sts. Work 1 rnd in St st with yellow yarn, and cont in K1,P1 rib. When neck band measures 5-6-7 cm/2-2.4-2.8 in, bind off.

Sew 2 dense zigzag seams on the innerside of neck edge. Cut off all extras. Sew normal zigzag over cut edges. Fold neck band in double over cut edge, and sew on WS.

Sew on sleeves. Sew seam allowance over cut edges.

Weave in all ends on WS.

### HOOD

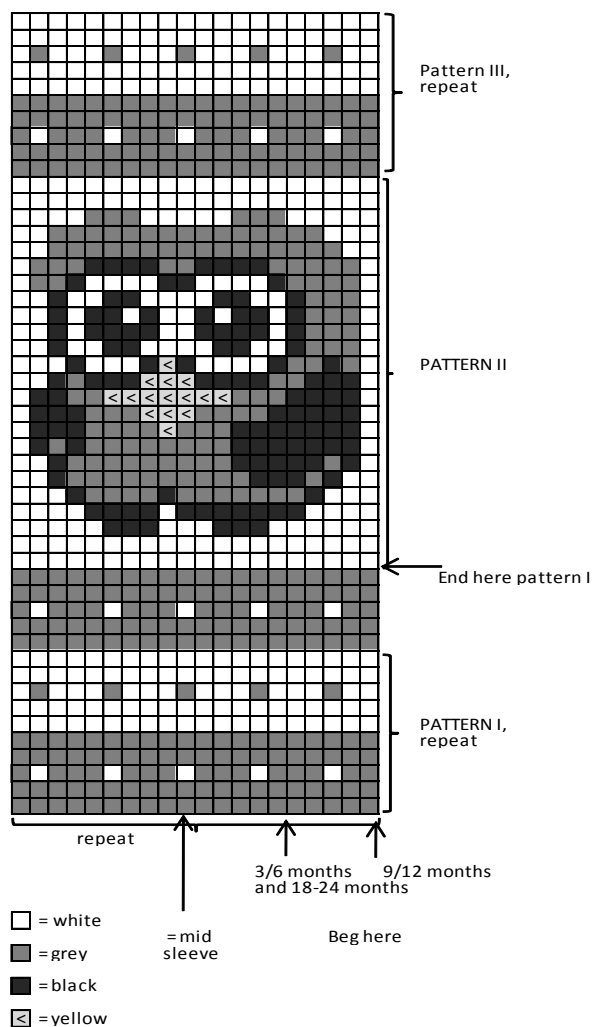
Using needles size 2½ mm and grey yarn, cast on 117-135-151 sts. Work back and forth 2½ cm/1 in in K1,P1 rib. Knit 1 row from WS + 2½ cm/1 in in rib. Change to needles size 3 mm. Cont working in St st until work measures 16-17-18 cm/6.3-6.7-7.1 in. Bind off 23-27-33 mid sts. Finish each side separately. Work 4-5-6 cm/1.6-2-2.4 in St st. Bind off. Work same for the other side. Sew bound-off mid sts to the sides.

Fold rib in double, and sew on WS to form a casing.

Sew hood on neck edge, inside neck band. Beg mid back, and sew towards front edges, leaving tunnel ends open.

Twist a cord with yellow yarn, and thread it through the casing.

**PANTS SEE 1404-7**



## Merino Soft

### Blanket

**1404-4**

**Size :** 54 x 80 cm  
21.3 x 31.5 in

**ALTERNATIVE YARNS:** Viking Baby ull (100 % merino wool), Viking Alpaca Fine ( 85% Superfine Alpaca, 15% Highland wool ), Viking Merino Soft ( 100% Merino Wool, superwash), 50 g ball

White, 700 : 4 balls  
Light Grey, 713 : 2 balls  
Dark Grey, 715 : 1 ball

Circular needle size 2 ½ and 3 mm – US 1 or 2 and 2 or 3 – UK/Canadian 13 or 12 and 11

**Gauge:** 28 sts = approx. 10 cm/4 in over St st using needles size 3 mm. **Check your gauge to ensure success.**

**Seed st:** K1, P1

**1<sup>st</sup> row:**

**2<sup>nd</sup> row:** Knit all purl sts, and purl all knit-sts.

Rep 2<sup>nd</sup> row.

When working in patt with 2 clrs, it's important to maintain the order of yarns over your finger. Always hold the darker clr in front throughout the whole project.

Using needles size 2½ mm and white yarn, cast on 163 sts. Work back and forth approx. 5 cm/2 in in Seed st. Slip first and last 15 sts on holders (= sts for side bands). Change to needles size 3 mm. Work 1 row in St st. Cast on 4 new sts to the end of the row (= purl every row, to be cut open). Cont working in rnds in patt I, then in patt III and after that in patt II until work measures 36 cm/14.2 in (end with a complete grey stripe). Work in patt III, and then in patt II until work measures 66 cm/26 in (= same number of stripes as before mid patt, and end with a complete grey stripe). Work in patt III, and after that in patt I. Work 1 row in St st with white yarn over all sts.

Work now for the side bands. Slip 15 sts from holder on needles size 2½ mm. Cast on with white yarn 5 new sts at the edge facing the blanket. Work in St st over the new sts (= seam allowance). Work in Seed st over rem sts until side band measures approx. 70 cm/27.6 in (side band must not be too long). Bind off seam allowance sts, and leave rem 15 sts on holder. Work same for the other side band, but in reverse.

**Finishing:** Dampen the work slightly from WS. Sew 2 dense zigzag seams over the purl-sts. Cut open between the seams. Sew normal zigzag over cut edges. Sew on side bands. Sew seam allowance over cut edges.

Slip sts from holders over same needle with rest of the sts. Using white yarn, work back and forth approx. 5 cm/2 in in Seed st over all sts. Bind off, knit-sts knitwise, and purl-sts purlwise. Weave in all ends on WS.

## Viking Merino Soft

### Cardigan and hat

1404-5

<b>Size:</b>	3/6 - 9/12 months - 2 - 4/6 yrs
<b>Chest</b>	45 -54 -62 - 71 cm 17.7-21.3-24.4-28 in
<b>Length</b>	24 -29 -36 -43 cm 9.4-11.4-14.2-16.9 in
<b>Sleeve length</b>	19-23-28-33 cm 7.5-9.1-11-13 in

**ALTERNATIVE YARN:** Viking Baby ull (100 % merino wool), Viking Alpaca Fine ( 85% Superfine Alpaca, 15% Highland wool ), Viking Merino Soft ( 100% Merino wool, superwash), 50 g ball

Black, 703 :	2-2-3-4 balls
Grey, 715 :	1-1-2-2 balls
White, 700 :	1-1-1-1 ball

Circular needle size 2 ½ and 3 mm – US 1 or 2 and 2 or 3 – UK/Canadian 13 or 12 and 11  
+ 4-5-5-6 buttons

**Gauge:** 28 sts = approx. 10 cm/4 in over St st using needles size 3 mm. **Check your gauge to ensure success.**

When working in a patt with 2 clr, it's important to maintain the order of yarns over your finger. Always hold the darker clr in front throughout the whole project.

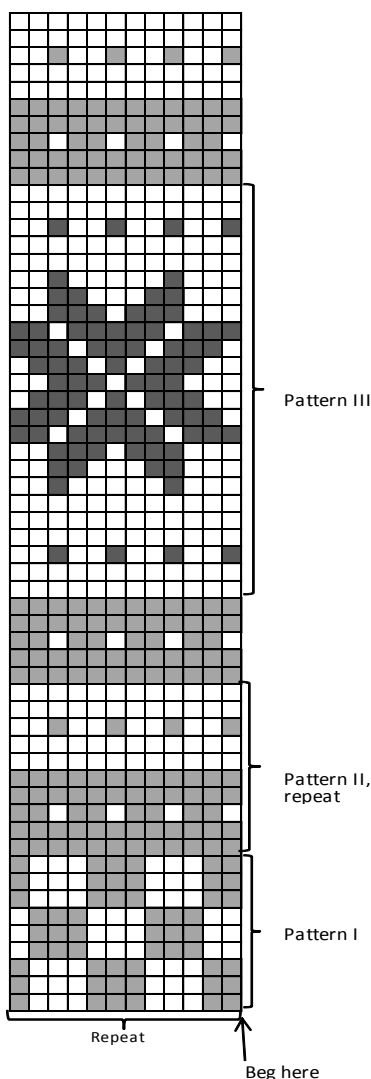
#### CARDIGAN

Using needles size 2½ mm and black yarn, cast on 139-163-191-215 sts. Work back and forth 2-2-3-3 cm/0.8-0.8-1.2-1.2 in in K1,P1 rib. Make a buttonhole after 1-1-2-2 cm/0.4-0.4-0.8-0.8 in (left edge for boy, right edge for girl) inside 3-3-4-4 sts from front edge (Buttonhole: Bind off 2 sts. Next row: Cast on 2 sts over the bound-off sts). Slip first and last 9-9-11-11 sts on holder (= sts for front bands). Change to needles size 3 mm. Work 1 rnd in St st, and cast on 4 new sts to the end of the row (= sts to be cut open, not incl in the number of sts). There is now 121-145-169-193 sts on a rnd. Work in patt I as charted. Place markers each side, 63-75-87-99 sts for back, and 29-35-41-47 sts for both fronts. When patt I is ready, work in patt II until work measures 10-11-18-25 cm/4-4.3-7.1-9.8 in (end with 2 rnds with black yarn). Work in patt III as charted (size 3/6 months will be completed before patt III is ready, end with a complete stripe). When patt III is ready, work in St st with black yarn until work measures approx. 24-29-36-43 cm/9.4-11.4-14.2-16.9 in. Bind off.

**Sleeves:** Using needles size 2½ mm and black yarn, cast on 40-44-46-48 sts. Work 2-2-3-3 cm/0.8-0.8-1.2-1.2 in in rib. Change to needles size 3 mm. Work in St st, and inc evenly across 1<sup>st</sup> rnd number of sts to be 45-47-51-55 sts. Cont working in St st and patt I as charted. Place a marker mid under sleeve. Inc 1 st both sides of the marker approx. every 2½ -1 ½ - 1 ½ -2 cm/1 - 0.6 - 0.6 - 0.8 in. When patt I is ready, cont working in patt II until work measures approx. 12-16-21-26 cm/4.7-6.3-8.3-10.2 in. Work in patt IV, and after that in St st with black yarn until there is 57-73-79-83 sts on a rnd and sleeve measures approx. 19-23-28-33 cm/7.5-9.1-11-13 in (or desired length). Turn work inside out. Work 5 rnds in St st for seam allowance. Bind off.

**Finishing:** Dampen pieces slightly from WS. Sew 2 dense zigzag seams around armholes (measure width from sleeve top), and mid front. Cut open between seams. Sew normal zigzag over cut edges. Join shoulder seams, 12-16-21-26 sts for each shoulder.

**Front bands:** Slip from holder 9-9-11-11 sts without buttonhole



□ = white  
 ◻ = light grey  
 ◼ = dark grey

over needles size 2½ mm. Cast on 4 new sts to the edge facing the body (= seam allowance). Work St st over the cast-on sts. When front band measures approx. 3-4-4-5 cm/1.2-1.6-1.6-2 in less than total length (front band must not be too long), bind off seam allowance sts, and leave rem 9-9-11-11 rib sts on holder. Work same for the other front band, but in reverse. Make 4-5-5-6 buttonholes evenly spaced apart. First buttonhole is already made, and last one will be made on last row before neck band.

**Cutting neck edge:** Sew a curving marker thread for neck edge, approx. 3-4-4-5 cm/1.2-1.6-1.6-2 in below upper edge. Using black yarn, pick along marked line approx. 21-25-28-31 sts both sides of the cut sts (check that patt is same on both sides) + sts from back and front bands = 99-111-123-131 sts. Work 1 row in St st (not over front bands). Cont working in K1,P1 rib. When neck band measures approx. 2-2-2½-2½ cm/0.8-0.8-1-1 in, bind off in rib first and last 9-9-11-11sts. Cont working back and forth over rem sts until neck and measures 4-4-5-5 cm/1.6-1.6-2-2 in. Bind off rather loosely in rib.

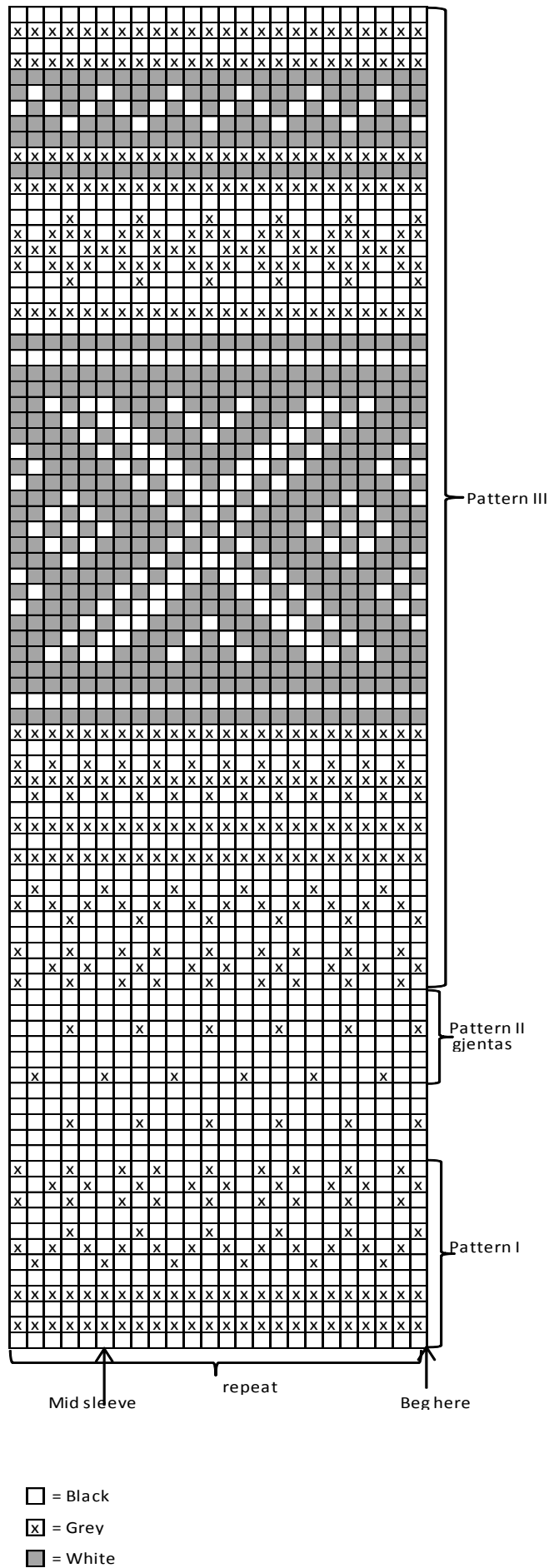
Sew 2 dense zigzag seams along the innerside of neck edge. Cut off all extras. Sew normal zigzag over cut edges. Fold neck band in double over cut edge, and sew on WS.

**Finishing:** Sew on front bands. Sew seam allowances over cut edges.

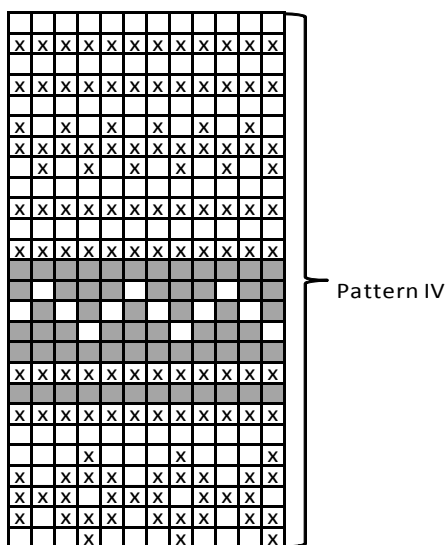
Sew on sleeves. Sew seam allowances over cut edges.

### HAT

Using needles size 2½ mm and black yarn, cast on 96-120-120-128 sts. Work in rnds 8-9-10-12 cm/3.1-3.5-4-4.7 in in K1,P1 rib. Change to needles size 3 mm. Cont working in rnds in St st and patt I as charted. When patt I is ready, cont working in patt II until work measures 21-22-23-24 cm/8.3-8.7-9.1-9.4 in. Work in St st with black yarn, and beg dec for crown: \*K2, K2tog\*, rep \*-\* across the rnd. Work 3 rnds without dec. Next rnd: \*K1, K2tog\*, rep \*-\* across the rnd. Work 2 rnds without dec. Knit all sts tog in pairs. Work 1 rnd without dec. Break yarn, thread trough rem sts, and weave in on WS. Make a pompom with white yarn, and fasten it on top.



- = Black
- ⊗ = Grey
- = White



# Viking Merino Soft

## Dress

1404-6

<b>Size:</b>	<b>3/6-9/12-18 months-2-4 yrs</b>
<b>Waist:</b>	<b>40-43-46-50-54 cm</b>
	<b>15.7-16.9-18.1-19.7-21.3 in</b>
<b>Length</b>	<b>36-40-45-48-52 cm</b>
	<b>14.2-15.7-17.7-18.9-20.5 in</b>

**ALTERNATIVE YARN:** Viking Baby ull (100 % merino wool), Viking Alpaca Fine ( 85% Superfine Alpaca, 15% Highland wool ), Viking Merino Soft ( 100% Merino wool, superwash), 50 g ball

Black, 703 :	2-2-2-3-4 balls
Grey, 715 :	2-2-2-3-3 balls
White, 700 :	1-1-1-1-1 ball

Circular needle size 2 ½ and 3 mm – US 1 or 2 and 2 or 3 – UK/Canadian 13 or 12 and 11  
+ 3 pairs of clasps

**Gauge:** 28 sts = approx. 10 cm/4 in over St st using needles size 3 mm. **Check your gauge to ensure success.**

When working in patt with 2 clr, it's important to maintain the order of yarns over your finger. Always hold the darker clr in front throughout the whole project.

### DRESS

Beg from hemline. Using needles size 3 mm and black yarn, cast on 216-240-264-288-312 sts. Work 3 cm/1.2 in in St st + purl 1 rnd for folding edge. Cont working in patt A as charted. Work then in patt B until work measures approx. 20-23-27-28-31 cm/7.9-9.1-10.6-11-12.2 in, measured from folding edge. Cont working with black yarn, and dec evenly across first rnd number of sts to be 112-120-132-144-156 sts. Work 8 rnds in Garter st. Place markers each side, 56-60-66-72-78 sts for both back and front. Work 1 rnd in St st, and bind off mid front 10 sts. Change to grey yarn, and cont working back and forth in St st until work measures approx. 6-6-7-8-8 cm/2.4-2.4-2.8-3.1-3.1 in, measured from the bound-off sts. Note! If you want to adjust the length of the upper part, do it before shaping the armholes. Bind off 10 sts at each side (5 sts both sides of the markers). Finish each side separately.

**Front:** Beg V-neck shaping same time as armholes. Bind off 1 st at neck edge every 2<sup>nd</sup> row 3 times, and then every 4<sup>th</sup> row 5-6-6-7-7 times. Bind off at armhole edge every 2<sup>nd</sup> row 0-0-0-1-1x3 sts, 1-1-2-2-2x2 sts, 2-2-2-1-2x1 st. When armhole and V-neck are ready, cont working in St st until armhole measures 10-11-11-12-13 cm/4-4.3-4.3-4.7-5.1 in (upper part measures approx. 16-17-18-20-21 cm/6.3-6.7-7.1-7.9-8.3 in, measured from first grey rnd). Bind off.

Work same for the other side, rev all shaping.

**Back:** Bind for armholes at each edge same as for front. When back measures same as front, bind off.

### Finishing

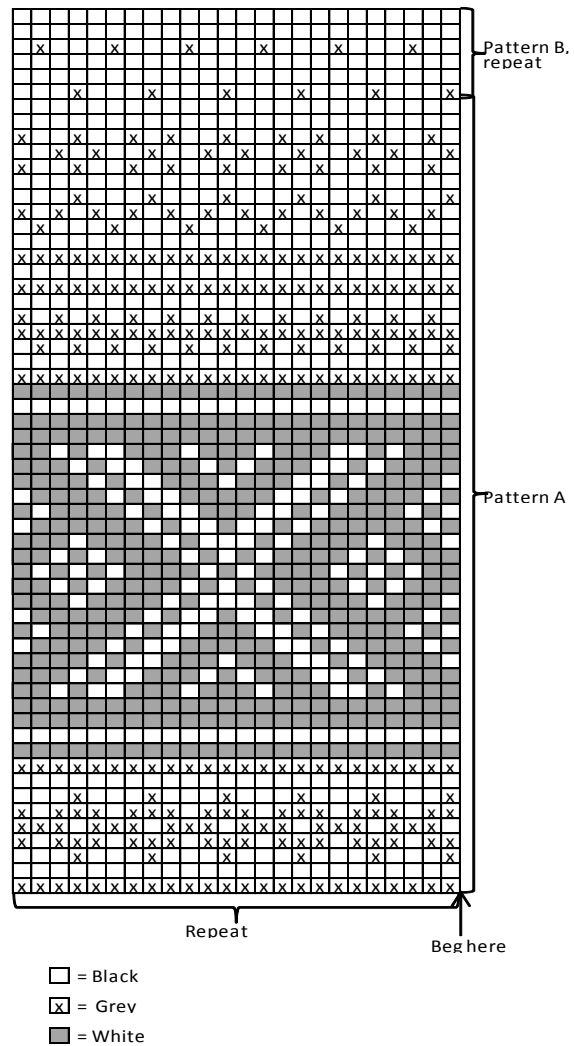
Join shoulder seams, 6-7-8-8-10 sts for each shoulder. Fold hem in double, and sew on WS.

**Front bands:** Beg from RS, from lower edge of right front. Using needles size 2½ mm and black yarn, pick or knit up approx. 17-18-19-20-22 sts. Work back and forth in Garter st until front band measures approx. 1½ cm/0.6 in (or 4 rills). Bind off.

Work same for the other front band.

**Neck band:** Using needles size 2½ mm and black yarn, pick or knit up approx. 84-92-96-104-110 sts around neck edge (also over the front bands). Work same as for front bands. Bind off.

**Armhole bands:** Beg mid under arm. Using needles size 2½ mm and black yarn, pick or knit up approx. 64-68-74-80-84 sts. Work back and forth in Garter st same as for neck band. Bind off. Join seam mid under arm.



# Viking Merino Soft

## Sweater, pants and hat

1404-7

<b>Size:</b>	<b>3 - 9 months - 2 - 4/6 yrs</b>
<b>Chest:</b>	<b>43 -51 -60 - 69 cm</b>
	<b>16.9-20.1-23.6-27.2 in</b>
<b>Length:</b>	<b>23 -28 -36 -43 cm</b>
	<b>9.1-11-14.2-16.9 in</b>
<b>Sleeve length:</b>	<b>18 -22 -28 -33 cm</b>
	<b>7.1-8.7-11-13 in</b>
<b>Leg length:</b>	<b>17 -21 -33 -44 cm</b>
	<b>6.7-8.3-13-17.3 in</b>
<b>Hips:</b>	<b>46 -50 -56 -60 cm</b>
	<b>18.1-19.7-22-23.6 in</b>

**ALTERNATIVE YARNS:** Viking Baby ull (100 % merino wool), Viking Alpaca Fine ( 85% Superfine Alpaca, 15% Highland wool ), Viking Merino Soft ( 100% Merino wool, superwash), 50 g ball

### Sweater and hat

Grey, 715 :	2-2-3-4 balls
Black, 703 :	1-1-2-2 balls
White, 700 :	1-1-1-1 ball

### Pants

Grey, 715 :	2-2-3-4 balls
-------------	---------------

Circular needle size 2 ½ and 3 mm – US 1 or 2 and 2 or 3 – UK/Canadian 13 or 12 and 11  
+ 1 button

**Gauge:** 28 sts = approx. 10 cm/4 in over St st using needles size 3 mm. **Check your gauge to ensure success.**

When working in patt with 2 clrs, it's important to maintain the order of yarns over your finger. Always hold the darker clr in front throughout the whole project.

### SWEATER

Using needles size 2½ mm and grey yarn, cast on 120-144-168-192 sts. Work in rnds 2-2-3-3 cm/0.8-0.8-1.2-1.2 in in K1,P1 rib. Change to needles size 3 mm. Place markers each side, 59-71-83-95 sts for back, and 61-73-85-97 sts for front. Cont working in St st and patt I as charted, and after that in patt II until work measures 8-10-18-25 cm/3.1-4-7-9.8 in (end with 2 rnds with grey yarn). Work now in patt III as charted (size 3 months will be ready before patt III is completed, end with a complete stripe). When work measures 20-24-32-38 cm/7.9-9.4-12.6-15 in, bind off mid front 17-19-23-25sts for neck edge. Cont working back and forth. Bind off at each edge every 2<sup>nd</sup> row 1x5sts, 1x3sts, 1x2 sts, and 1x1 st (same for every size). When work measures the given length, bind off.

**Sleeves:** Using needles size 2½ mm and grey yarn, cast on 40-44-46-48 sts. Work 2-2-3-3 cm/0.8-0.8-1.2-1.2 in in K1,P1 rib. Change to needles size 3 mm. Work in St st, and inc evenly across 1<sup>st</sup> rnd number of sts to be 45-47-51-55 sts. Cont working in patt I as charted. Place a marker mid under sleeve. Inc 1 st both sides of the marker approx. every 2½ - 1 ½ - 1 ½ - 2 cm/1-0.6-0.6-0.8 in. When patt I is ready, cont working in patt II until sleeve measures approx. 11-15-21-26 cm/ 4.3-5.9-8.3-10.2in (end with 2 rnds in grey yarn). Work in patt IV, and after that in St st with grey yarn until there is 57-73-79-83 sts on a rnd, and work measures approx. 18-22-28-33cm/7.1-8.7-11-13 in. Turn work inside out. Work 5 rnds in St st for seam allowance. Bind off.

**Finishing:** Dampen pieces slightly from WS. Sew 2 dense zigzag seams around armholes (measure width from sleeve top). Cut open between seams. Sew normal zigzag over cut edges. Join shoulder seams, 10-15-19-24 sts for each shoulder.

**Neck band:** Beg mid back. Using needles size 2½ mm and grey yarn, pick or knit up approx. 84-94-98-104 sts around neck edge. Purl 1 rnd. Cont working back and forth in K1,P1 rib until neck band measures 4-4-5-6 cm/1.6-1.6-2-2.4 in. Bind off in rib. Fold neck band in double, and sew on WS. Crochet sc-row along neck band edges (through both edges). Crochet a buttonhole loop on one side.

### PANTS

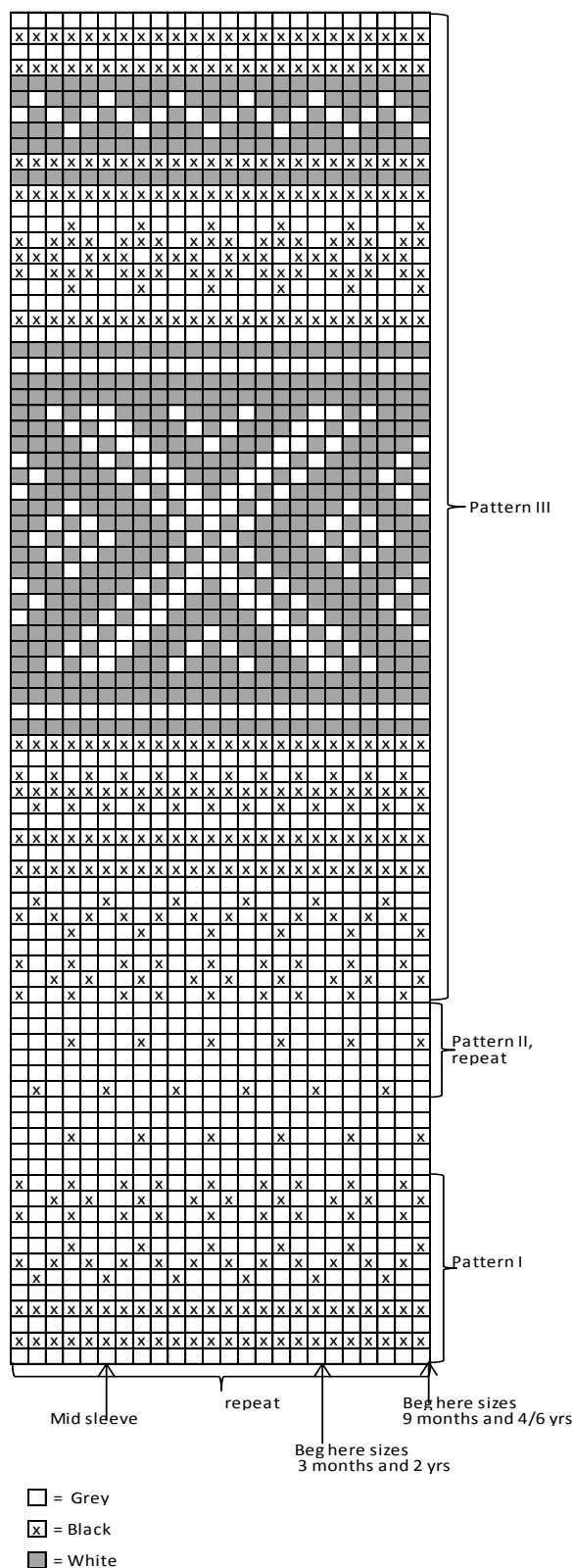
Beg from lower edge of one leg. Using needles size 2½ mm and grey yarn, cast on 44-48-52-56 sts. Work in rnds 3 cm/1.2 in in K1,P1 rib. Change to needles size 3 mm. Work in St st, and inc evenly across 1<sup>st</sup> rnd number of sts to be 56-60- 66-70 sts. Place a marker beg of rnd = inner seam of leg. Inc 1 st both sides of the marker approx. every 1 ½ - 2 - 3 -3½ cm/0.6-0.8-1.2-1.4 in until there is altog. 72-78-86-92 sts on a rnd. Work until leg measures approx. 17 -21-33-44 cm/6.7-8.3-13-17.3 in (or desired length). Leave work aside, and knit same for the other leg.

Slip both legs on same circular needle size 3 mm, with inner seams facing each other = 144-156-172-184 sts. Place markers mid front and back. Dec 1 st both sides of the markers every 2<sup>nd</sup> rnd 4 times = 128-140-156-168 sts on a rnd. Cont working until work measures 13-14-17-20 cm/5.1-5.5-6.7-7.9 in, measured from crotch. Work short rows for back: Beg from mid back, K6, turn, P12. Work 6 sts more each time, turning 4 times more at each side. Work 1 rnd in St st over a sts, and dec evenly across number of sts to be 120-132-144-156 sts. Work 5 cm/2 in in

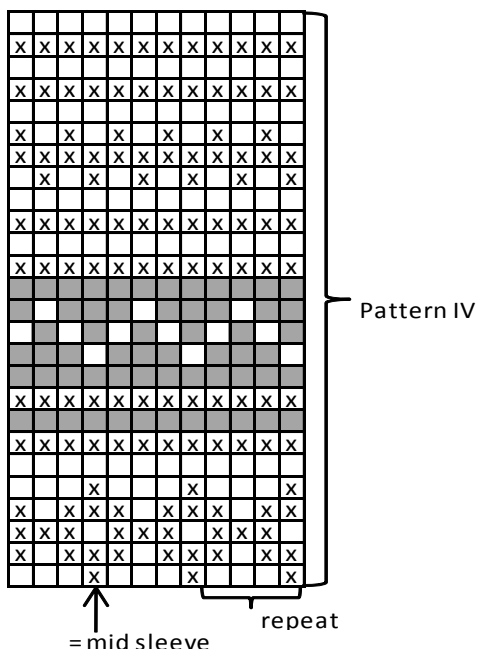
K1,P1 rib. Bind off rather loosely. Fold rib in double, and sew on WS. Weave in all ends on WS. Sew crotch seam. Thread elastic through casing on waist.

### HAT

Using needles size 2½ mm and grey yarn, cast on 96-120-120-128 sts. Work in rnds 8-9-10-12 cm/3.1-3.5-4-4.7 in in K1,P1 rib. Change to needles size 3 mm. Cont working in St st and patt I as charted. When patt I is ready, cont working in patt II until work measures 21-22-23-24 cm/ in. Cont working with grey yarn, and beg dec for crown: \*K2, K2tog\*, rep \*-\* across the rnd. Work 3 rnds without dec. \*K1, K2tog\*, rep \*-\* across the rnd. Work 2 rnds without dec. Knit all sts tog in pairs. Work 1 rnd without dec. Break yarn, thread through rem sts, and weave in on WS. Make a pompom with black yarn, and fasten on top.







Using needles size 3 mm and dark grey yarn, cast on 40-42-44-46-46 sts. Work in rib same as for body. Knit 1 rnd, and inc evenly across number of sts to be 47-49-51-53-55 sts. Cont working in St st and patt I. Work after that in patt II, but place a marker mid under sleeve. Inc 1 st both sides of the marker approx. every 6-3 ½ - 3 ½ -3-3 cm/2.4-1.4-1.4-1.2-1.2 in until there is altog. 51-57-61-67-73 sts on a rnd (inc sts are worked in patt). Cont working until sleeve measures the given length, or as desired. **Note! End with same patt rnd as body.** Bind off 10 sts mid under sleeve (5 sts both sides of the marker). Leave work aside, and knit same for the other sleeve.

**Yoke:** Knit both sleeve sts on same circular needle with the body, sleeves over the bound-off armhole sts = 194-218-238-262-286 sts. Adjust the number of sts to be 192-216-240-264-288 sts. Cont working in rnds in patt III (end for 2 smallest sizes as charted). When patt III is ready, cont working in St st with grey yarn until work measures the given length.

**Neck band:** Beg from mid back. Dec evenly across 1<sup>st</sup> rnd number of sts to be 80-88-94-98-102 sts. Work back and forth in K1,P1 rib. When neck band measures approx. 4 cm/1.6 in, bind off in rib. Fold neck band in double, and sew on WS. Crochet a buttonhole loop to neck band edge on back, and sew a button on front edge.

Sew on sleeves. Weave in all ends on WS.

## Viking Merino Soft

### Sweater, pants and hat 1404-8

Size:	3/6	9	12 /18 months	2	4 yrs
<b>Chest:</b>	47	51	56	60	64 cm
	18.5	20.1	22	23.6	25.2 in
<b>Length:</b>	approx. 24	29	33	36	40 cm
	9.4	11.4	13	14.2	15.7 in
<b>Sleeve length:</b>	approx. 15	18	21	24	30 cm
	5.9	7.1	8.3	9.4	11.8 in
<b>Leg length:</b>	18	21	23	27	33 cm
	7.1	8.3	9.1	10.6	13 in

**ALTERNATIVE YARNS:** Viking Baby ull (100 % merino wool), Viking Alpaca Fine ( 85% Superfine Alpaca, 15% Highland wool ), Merino Soft ( 100% Merino wool, superwash), 50 g ball

#### SWEATER AND HAT

White, 700	2	3	3	4	4 balls
Dark Grey, 715	2	2	2	2	2 balls
Light Violet, 767	1	1	1	1	1 ball

#### PANTS

White, 700:	2	2	2	3	3 balls
Dark Grey, 715:	1 ball for all sizes				
Light Violet, 767:	1 ball for all sizes				

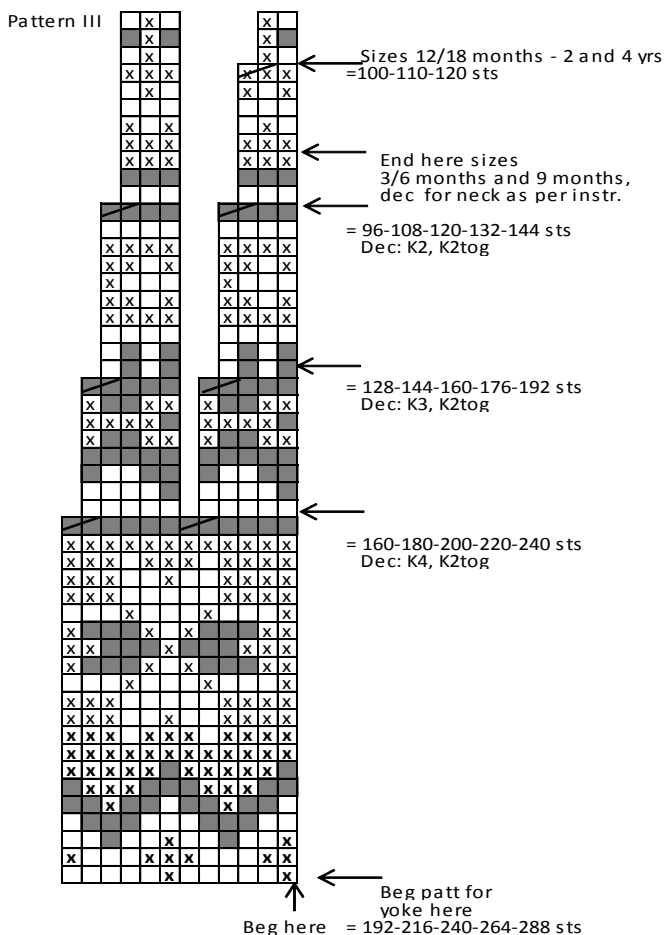
Double pointed needles and circular needle size 3 mm – US 2 or 3 – UK/Canadian 11  
+ 1 small button for sweater

**Gauge:** 28 sts = approx. 10 cm/4 in over St st using needles size 3 mm. **Check your gauge to ensure success.**

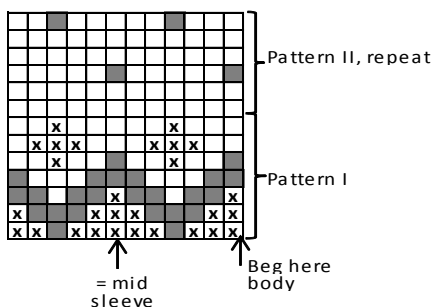
#### SWEATER

Using needles size 3 mm and dark grey yarn, cast on 132-144-156-168-180 sts. Work in rnds 3 cm/1.2 in in K1,P1 rib. Place markers each side, 67-73-79-85-91 sts for front, and 65-71-77-83-89 sts for back. Cont working in St st and patt I as charted. After patt I is ready, cont working in patt II until work measures approx. 12-16-19-21-24 cm/4.7-6.3-7.5-8.3-9.4 in. End with 2 rnds in white yarn. Bind off 10 sts at each side (5 sts both sides of the markers). Leave work aside.

#### Sleeves



- = white
- = grey
- = light violet
- = K2tog



### HAT (3/6 months – 9/18 months – 2/4 yrs)

Using needles size 3 mm and dark grey yarn, cast on 108-120-132 sts. Work 3 cm/1.2 in in K1,P1 rib. Cont working in rnds in patt I as charted. When patt I is ready, work in patt II until work measures approx. 15-16-17 cm/5.9-6.3-6.7 in, measured from cast-on edge. Beg dec for crown: \*K4, K2tog\*, rep \*-\* across the rnd. Work 2 rnds without dec. Rep dev every 3<sup>rd</sup> rnd with 1 st less between each dec until 36-40-44 sts rem. Knit all sts tog in pairs = 18-20-22 sts. Break yarn, thread through rem sts, tighten the yarn, and weave in on WS. Make a pompom with light violet yarn, and fasten on top.

### PANTS

Beg from one leg. Using needles size 2½ mm and grey yarn, cast on 44-48-48-52-54 sts. Work 3 cm/1.2 in in K1,P1 rib. Change to needles size 3 mm. Work 1 rnd in St st, and inc evenly across number of sts to be 59-61-63-65-67 sts. Cont working in rnds in St st and patt I as charted. When patt I is ready, cont working in St st with white yarn. Place a marker beg of rnd = inner seam of leg. Inc 1 st both sides of the marker approx. every 2½-2-3-2½-2½ cm/1-0.8-1.2-1-1 in until there is altg. 71-81-81-91-91 sts

on a rnd. When leg measures approx. 18-21-23-27-33 cm/7.1-8.3-9.1-10.6-13 in (or as desired), leave work aside, and knit same for the other leg. Slip both legs on same circular needle, inner seams facing each other = 142-162-162-182-182 sts. Place markers mid front and back. Cont working in rnds, and dec 1 st both sides of the markers every 2<sup>nd</sup> rnd altg. 4-4-4-5-5 times = 126-146-146-162-162 sts on a rnd. Cont working until work measures approx. 16-18-22-25-26 cm/6.3-7.1-8.7-9.8-10.2 in, measured from crotch. Place markers each side, 63-73-73-81-81 sts for both back and front. Place a marker mid back. Work short rows for back. Beg from mid back – K6, turn, P11, turn, work 5 sts more each time, altg. 4-5-5-5 times at each side. Work 1 rnd in St st over all sts. Work 3 cm/1.2 in in K1,P1 rib, purl 1 rnd (= folding edge) + 3 cm/1.2 in in rib. Fold rib in double, and sew on WS. Thread elastic through the casing on waist. Weave in all ends on WS.

## Viking Merino Soft

### Dress

1404-9

**Size:** 3/6-9/12-18 months-2-4 yrs

**Waist:** 40-43-46-50-54 cm

15.7-16.9-18.1-19.7-21.3 in

**Length** 36-40-45-48-52 cm

14.2-15.7-17.7-18.9-20.5 in

**ALTERNATIVE YARNS:** Viking Baby ull (100 % merino wool), Viking Alpaca Fine ( 85% Superfine Alpaca, 15% Highland wool ), Merino Soft ( 100% Merino wool, superwash), 50 g ball

Pink, 765 : 2-2-3-3-4 balls

White, 700 : 1-1-1-2-2 balls

Circular needle size 2 ½ and 3 mm – US 1 or 2 and 2 or 3 – UK/Canadian 13 or 12 and 11

+ 3 pairs of clasps

**Gauge:** 28 sts = approx. 10 cm/4 in over St st using needles size 3 mm. **Check your gauge to ensure success.**

When working in a patt with 2 clrs, it's important to maintain the order of yarns over your finger. Always hold the darker clr in front throughout the whole project.

### DRESS

Beg from hem line. Using needles size 3 mm and pink yarn, cast on 220-240-260-280-300 sts. Work 20 rnds in Garter st. Cont working in patt A as charted. When patt A is ready, cont with patt B until work measures approx. 20-23-27-28-31 cm/7.9-9.1-10.6-11-12.2 in. Cont working with pink yarn, and dec evenly across first rnd number of sts to be 112-120-132-144-156 sts. Change to white yarn, and work 8 rnds in Garter st. Place markers each side, 56-60-66-72-78 sts for both back and front. Work 1 rnd in St st, and bind off mid front 10 sts. Change to pink yarn, and work back and forth in St st until work measures approx. 6-6-7-8-8 cm/2.42-2.8-3.1-3.1 in, measured from the bound-off sts mid front. **Note!** If you want to adjust the length of the upper part, do it before shaping the armholes. Bind off 10 sts at each side (5 sts both sides of the markers). Finish each side separately.

**Front:** Beg V-neck shaping same time as armholes. Bind off 1 st at neck edge every 2<sup>nd</sup> row 3 times, and then every 4<sup>th</sup> row 5-6-6-7-7 times. Bind off at armhole edge every 2<sup>nd</sup> row 0-0-0-1-1x3 sts, 1-1-2-2-2x2 sts, and 2-2-2-1-2x1st. When armhole and V-neck are ready, cont working in St st until armhole measures 10-11-11-12-13 cm/4-4.3-4.3-4.7-5.1 in (upper part measures approx. 16-17-18-20-21 cm/6.3-6.7-7.1-7.9-8.3 in measured from first pink rnd). Bind off.

Work same for the other side, rev all shaping.

**Back:** Bind for armholes at each edge same as for front. When back measures same as front, bind off.

### Finishing

Join shoulder seams, 6-7-8-8-10 sts for each shoulder.

**Front bands:** Beg from RS, from lower edge of right front. Using needles size 2½ mm and white yarn, knit up approx. 17-18-19-20-22 sts. Work back and forth in Garter st until front band measures approx. 1½ cm/0.6 in (or 4 rills). Bind off.

Work same for the other front band.

**Neck band:** Using needles size 2½ mm and white yarn, pick or knit up approx. 84-92-96-104-110 sts around neck edge (also over front bands). Work same as for front bands. Bind off.

**Armhole bands:** Beg mid under arm. Using needles size 2½ mm and white yarn, pick or knit up approx. 64-68-74-80-84 sts.

Work back and forth in Garter st same as for neck band. Bind off. Join seams mid under arm.

Sew front bands to the body. Sew on 3 pairs of clasps, and weave in all ends on WS.

When working in a patt with 2 clrs, it's important to maintain the order of yarns over your finger. Always hold the darker clr in front throughout the whole project.

### SWEATER

Using needles size 2½ mm and green yarn, cast on 120-140-160-180 sts. Work 2-2-3-3 cm/0.8-0.8-1.2-1.2 in in K1,P1 rib.

Change to needles size 3 mm. Place a marker at each side, 59-69-79-89 sts for back, and 61-71-81-91 sts for front. Cont working in St st and patt I as charted. When patt I is ready, cont working in patt II until work measures 11-15-20-26 cm/4.3-5.9-7.9-10.2 in (end with 2 rnds in green). Cont working in patt III as charted. When work measures 20-23-28-33 cm/7.9-9.1-11-13 in, bind off mid front 23-25-27-29 sts for neck edge. Cont working back and forth. Bind off at each edge every 2<sup>nd</sup> row 1x6 sts, 1x2 sts, and 1x1 st (same for all sizes). When patt III is ready, cont working with white yarn until work measures the given length. Bind off.

**Sleeves:** Using needles size 2½ mm and green yarn, cast on 40-44-46-48 sts. Work in rnds 3 cm/1.2 in in K1,P1 rib. Change to needles size 3 mm. Knit 1 rnd, and inc evenly across number of sts to be 45-47-51-55 sts. Cont working in rnds in St st and patt I as charted. When patt I is ready, cont with patt II (rep). Place a marker mid under sleeve. Inc 1 st both sides of the marker approx. every 2½ - 2½ - 2½ - 2 cm/1-1-1-0.8 in, until there is 57-61-67-79 sts on a rnd. When work measures approx. 16-19-23-28 cm/6.3-7.5-9.1-11 in, work patt IV as charted. Turn work inside out. Work 5 rnds in St st for seam allowance. Bind off.

**Finishing:** Dampen pieces slightly from WS. Sew 2 dense zigzag seams around armholes (measure width from sleeve top). Cut open between seams. Sew normal zigzag over cut edges. Join shoulder seams, 10-14-18-22 sts for each shoulder.

**Neck band:** Using needles size 2½ mm and green yarn, pick or knit up around neck edge approx. 88-92-98-102 sts. Work back and forth 4-4-5-5 cm/1.6-1.6-2-2 in in K1,P1 rib. Bind off rather loosely in rib. Fold neck band in double, and sew on WS.

Sew on sleeves. Sew seam allowances over cut edges.

Crochet sc-row along neck band edges (through both edges).

Crochet a buttonhole loop on one side.

### HAT

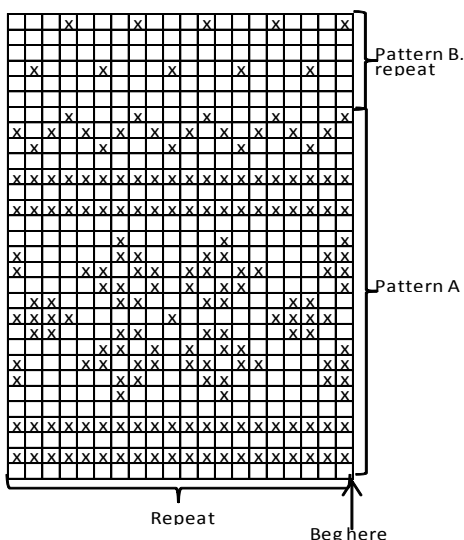
Using needles size 2½ mm and green yarn, cast on 100-120-120-140 sts. Work 5 rnds in K1,P1 rib. Change to needles size 3 mm. Cont working in St st and patt V as charted. When patt V is ready, cont with green yarn. Work 1 rnd in St st, and after that in K1,P1 rib until work measures approx. 12 cm/4.7 in (same for all sizes). Turn work inside out. Cont working in patt II until work measures approx. 19-21-23-25 cm/7.5-8.3-9.1-9.8 in, measured from cast-on edge. Beg dec for crown: Knit all sts tog in pairs. Work 3 rnds without dec. Knit all sts tog in pairs = 25-30-30-35 sts rem. Break yarn, thread through rem sts, and weave in on WS.

### MITTENS

Using needles size 2½ mm and green yarn, cast on 32-32-40-48 sts. Work 5-5-6-6 cm/2-2-2.4-2.4 in in K1,P1 rib. Change to needles size 3 mm. Knit 1 rnd in patt as charted (beg where arrow points according to the size). Cont working as charted. Dec as charted (beg from palm side): after a side marker: 1 selvage st, sl 1 st, K1, pss; before a side marker: K2tog. Rep dec every rnd until 6 sts rem. Break yarn, thread through rem sts, and weave in on WS.

### SCARF

Using needles size 3 mm and white yarn, cast on 5 sts. Work back and forth in Garter st. Inc 1 st inside 1 selvage st at each edge every 2<sup>nd</sup> row until there is 29 sts on a row. Cont working without inc until work measures approx. 9-10-11-12 cm/3.5-4-4.3-4.7 in. Slip every 2<sup>nd</sup> st on an extra needle, and hold back of the work. Work approx. 5 cm/2 in in K1,P1 rib over the rem sts, leave them to wait. Work same with the sts waiting on extra needle. Slip all sts over same needle again. Work 24-25-26-27 cm/9.4-9.8-10.2-10.6 in in Garter st. Divide sts again, and work in rib in two parts same as earlier. End work same as beg, but instead of inc, dec 1 st at each edge until 5 sts rem. Bind off. Weave in all ends on WS.



□ = White  
 □x = Pink

## Viking Merino Soft

**Sweater, hat, mittens and scarf 1404-10**

**Size:** 3-6/9-12/18 months – 2/4 yrs

**Chest:** 43-50 -57-64 cm

16.9-19.7-22.4-25.2 in

**Length:** 23-27-32-38 cm

9.1-10.6-12.6-15 in

**Sleeve length:** 18-21-25-30 cm

7.1-8.3-9.8-11.8 in

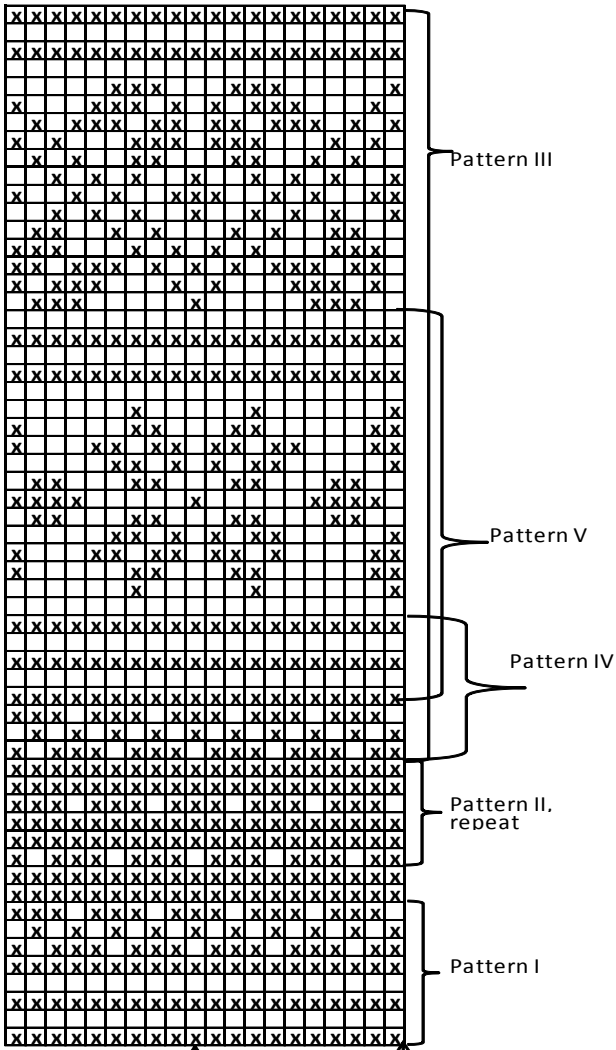
**ALTERNATIVE YARN:** Viking Merino Soft (100% Merino Wool-Superwash) Viking Baby ull (100% merino wool), Viking pure milk fiber (100% milk fiber), Viking Alpaca Fine (85% Superfine Alpaca, 15% Highland wool), 50 g ball

Green, 729: 3-4-4-5 balls

White, 700: 2-2-3-3 balls

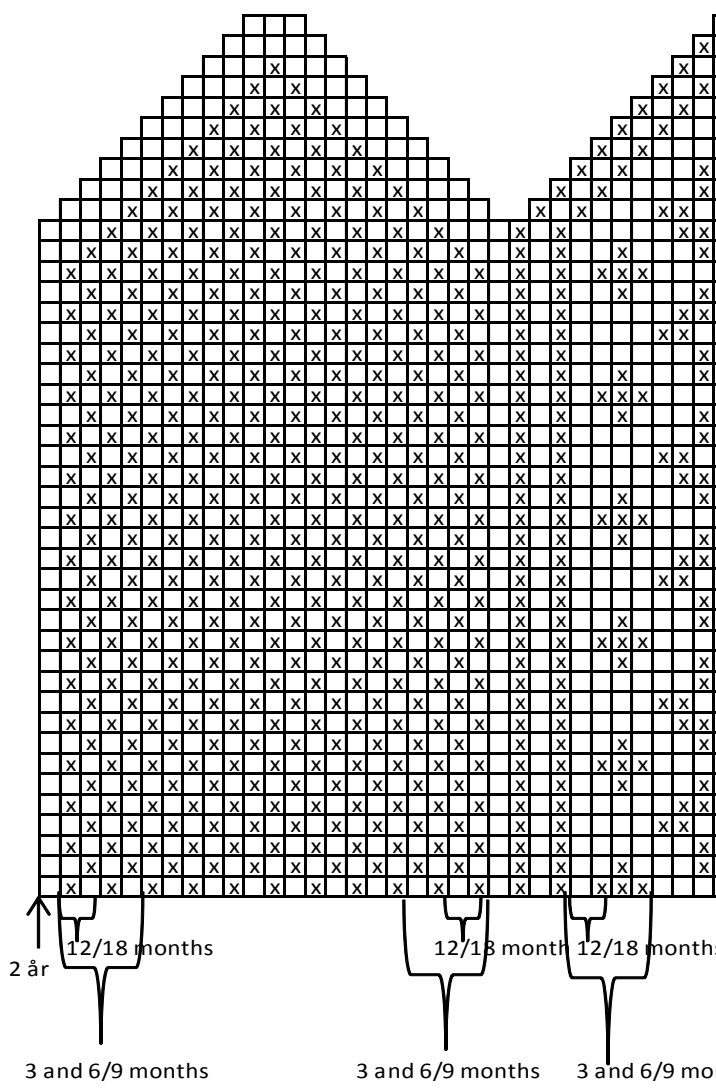
Circular needle and double pointed needles size 2½ and 3 mm – US 1 or 2 and 2 or 3 – UK/Canadian 13 or 12 and 11

**Gauge:** 28 sts = approx. 10 cm/4 in over St st using needles size 3 mm. **Check your gauge to ensure success.**



□ = Green  
 ⊠ = White

Pattern for mittens



Circular needle and double pointed needles size 2½ and 3 mm – US 1 and 2 and 2 or 3 – UK/Canadian 13 or 12 and 11  
 Gauge: 28 sts approx. 10 cm/4 in over St st using needles size 3 mm. Check your gauge to ensure success.  
 When working in a pattern with 2 clrs, it's important to maintain the order of yarns over your finger. Always hold the darker clr in front throughout the project. □ = Green  
 ☒ = White  
 Using needles size 2½ mm and white yarn, cast on 139-159-183-205 sts. Work back and forth 2-3-3-4 cm/0.8-1.2-1.2-1.6 in in K1,P1 rib. But after 12-12-2-2 cm/0.4-0.8-0.8-0.8 in make a buttonhole for edge for boy, right edge for girl), inside 3-3-4-4 sts from front edge. Buttonhole: Bind off 2 sts. Next row: Cast on 4 sts over the bound-off ones. Slip first and last 9-9-11-11 sts on holder (= sts for front bands). Change to needles size 3 mm. Work 1 rnd in St st, and cast on 4 sts at the end of the row (= to be cut open after work is included in the number of sts). Purl these next sts every rnd. There are 121-141-161-181 sts on a rnd. Work in part I as charted. Place marker each side, 63-73-89-94 sts back, and 2-2-3-3 sts in front. Work in part II until work measures approx. 12-17-21-24 cm/4.7-6.7-8.3-9.4 in (end with 2 rnds in white yarn). Work now in patt III as charted. When work measures approx. 20-24-32-38 cm/7.9-9.4-12.6-15 in, bind off mid front 16-18-20-22 sts for neck edge (incl 4 cast-on sts). Cont working back and forth in mid rib at each edge every 2nd row 1x5 sts, 1x3 sts, 1x2 sts, and 1-1-1-2x1 st. When work measures the given length, bind off.  
**Sleeves:** Using needles size 2½ mm and white yarn, cast on 40-42-44-46 sts. Work in rnds 2-3-3-4 cm/0.8-1.2-1.2-1.6 in in K1,P1 rib. Change to needles size 3 mm. Knit 1 rnd, and inc evenly across number of sts to be 43-45-47-49 sts. Cont working in St st and patt I as charted (check from mid st where to beg). Place a marker mid under sleeve. Inc 1 st both sides of the marker approx. every 1½ cm/0.6 in (same for all sizes) until there is 61-67-79-85 sts on a rnd. When patt I is ready, cont working in patt II until work measures approx. 17-21-25-30 cm/6.7-8.3-9.8-11.8 in. Work now in patt IV as charted. Turn work inside out. Work 5 rnds in St st for seam allowance. Bind off. Work same for the other sleeve.  
**Finishing :** Dampen pieces slightly from WS. Sew 2 dense zigzag seams around armholes (measure width from sleeve top). Cut open between seams. Sew normal zigzag over cut edges. Join shoulder seams, 12-16-20-24 sts for each shoulder.  
**Front band without buttonholes:** Slip sts from holder over needles size 2½ mm, and cast on 4 new sts to the edge facing the body (= seam allowance). Work in rib over front band sts, and St st over the cast-on sts for seam allowance. When front band reaches neck edge, bind off 4 seam allowance sts, and leave rem sts on holder.  
**Front band with buttonholes:** Work same as for the other front band, but make 5-5-6-6 buttonholes evenly spaced apart. First buttonhole is already made, last one will be made on last row before neck edge.  
**Neck band:** Using needles size 2½ mm and white yarn, pick or knit up sts from neck edge: Beg from RS, from right front edge. Slip sts from holder over needle, pick up approx. 21-24-26-28 sts along neck edge, 39-41-43-45 sts from back, 21-24-26-28 sts along left front neck edge, and slip sts from holder over needle = 99-107-117-123 sts on a row. Work 1 row in St st (not over front bands), and after that cont working back and forth in rib. When neck band measures

# Viking Merino Soft 1404-11

## Cardigan, hat, knee-length pants, and socks

Size: 3/6- 9/12 months- 2-4/6 yrs  
 Chest: 46-54- 61 - 69 cm  
 18.1-21.3-24-27.2 in  
 Length: 24-29-36-43 cm  
 9.4-11.4-14.2-16.9 in  
 Sleeve length: 19-23-28-33 cm  
 7.5-9.1-11-13 in

**ALTERNATIVE YARN:** Viking Merino Soft (100% Merino Wool-Superwash) Viking Baby ull (100 % merino wool), Viking pure milk fiber (100% milk fiber), Viking Alpaca Fine ( 85% Superfine Alpaca, 15% Highland wool), 50 g ball

**Cardigan, hat and socks**  
 White, 700 : 2-3-3-4 balls  
 Light Blue, 720 : 1-2-2-3 balls  
**Pants**  
 Light Blue, 720 : 2-2-3-3 balls

approx. 2-2-2 ½-2 ½ cm/0.8-0.8-1-1 in, bind off first and last 9-9-11-11 sts in rib. Cont working back and forth over rem sts until neck band measures approx. 4-4-5-5 cm/1.6-1.6-2-2 in. Bind off rather loosely in rib. Fold neck band in double, and sew on WS. Sew on sleeves. Sew seam allowances over cut edges. Weave in all ends on WS.

### HAT

Using needles size 2½ mm and white yarn, cast on 100-120-120-140 sts. Work 5 rnds in K1,P1 rib. Change to needles size 3 mm. Cont working in St st and patt V as charted. When patt V is ready, work 1 rnd in St st with white yarn, and after that in rib until work measures approx. 12 cm/4.7 in (same for all sizes). Turn work inside out, and cont working in patt II until work measures approx. 19-21-23-25 cm/7.5-8.3-9.1-9.8 in, measured from cast on edge. Beg dec for crown: Knit all sts tog in pairs. Work 3 rnds without dec. Knit again all sts tog in pairs = 25-30-30-35 sts rem. Break yarn, thread through rem sts, and weave in on WS.

### KNEE-LENGTH SOCKS

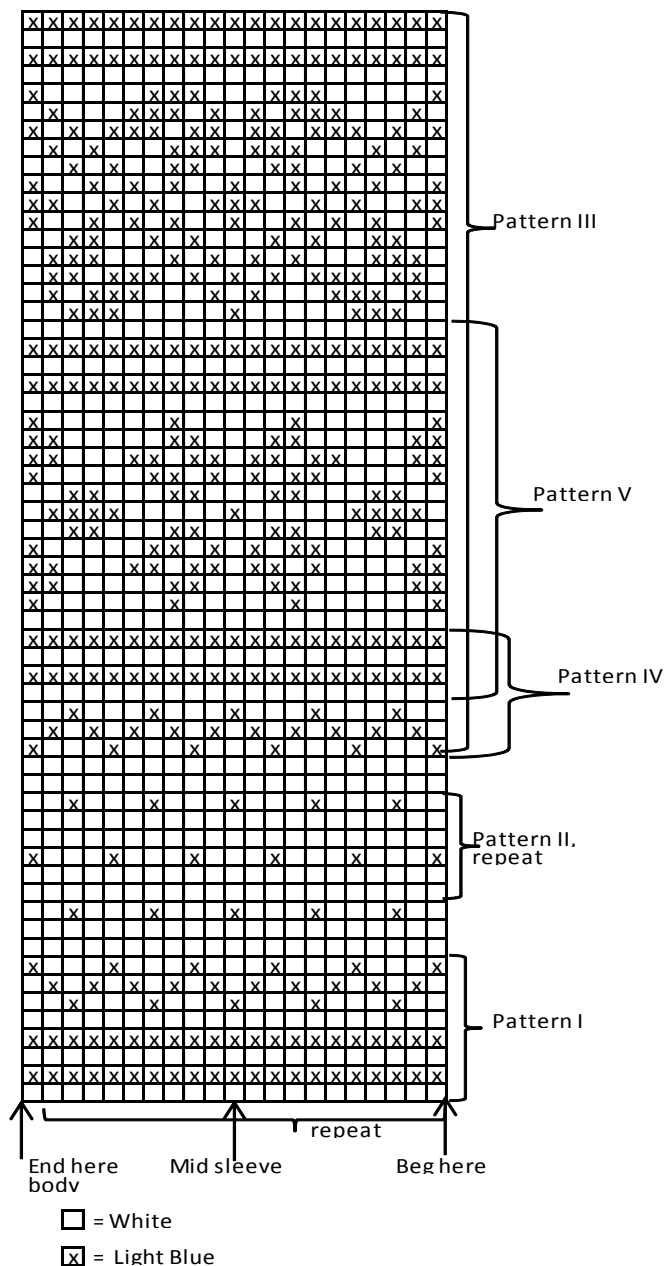
Using needles size 2½ mm and white yarn, cast on 48-54-60-66 sts. Work in rnds 3 cm/1.2 in in K1,P1 rib. Change to needles size 3 mm. Work 1 rnd in St st, and K2togtbl = 47-53-59-65 sts rem. Place a marker mid back, and cont working in patt as charted (beg and end as the arrow points out for each size). Dec **same time** 1 st both sides of the marker approx. every 3- 2 ½ - 2 ½ - 2 ½ cm/ 1.2-1-1-1 in. When work measures 18-20-22-25 cm/7.1-7.9-9.1-9.8 in, and there is 37-41-45-49 sts on a rnd, work for heel over half of the sts as foll: Divide work at sides, 19-21-23-25sts for front, and 18-20-22-24 sts for heel. Heel with white yarn: Work until 1 st rem at one side, turn, work until 1 st rem at the other side, turn. Work always 1 st less on each row until 6-6-8-8 mid sts rem. Turn, and work each time 1 st more, but pick up the strand between sts tbl before turning, and knit tog with next st in order to avoid holes in the heel. When you have returned all the sts back to work again, cont working in rnds in same patt as before over front sts, and in dot patt over sole sts. When foot (incl. heel) measures approx. 8-10-12-15 cm/3.1-4-4.7-5.9 in, cont working in St st with white yarn. Beg dec same time: Dec 2 sts at each side every 2<sup>nd</sup> rnd 2 times, and then every rnd until 9 sts rem. Break yarn, thread through rem sts, and weave in on WS. Work same for the other sock.

### KNEE-LENGTH PANTS

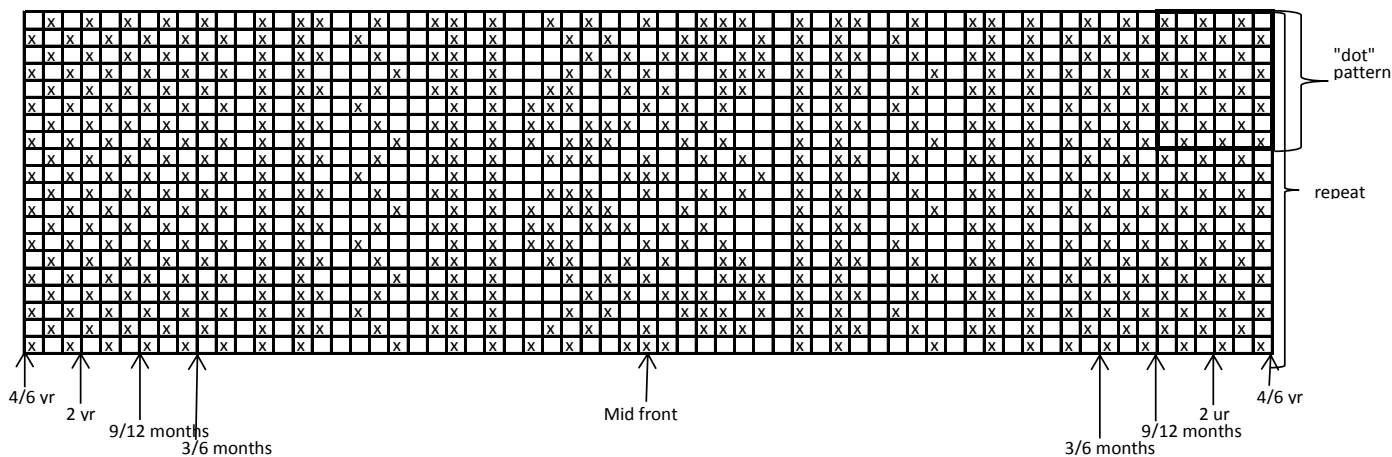
Beg from the lower edge of right leg. Using needles size 2½ mm and blue yarn, cast on 50-52-54-54 sts. Work in rnds 3 cm/1.2 in in St st, purl 1 rnd = folding edge + 3 cm/1.2 in in St st. Change to needles size 3 mm. Knit 1 rnd, and inc evenly across number of sts to be 92-96-100- 104 sts. Cont working in St st until leg measures approx. 13-16-20-23 cm/5.1-6.3-7.9-9.1 in. Leave work aside, and knit same for the other leg.

Slip both legs on same circular needle size 3 mm = 184-192-200-208 sts. Place markers mid front and back. Dec 1 st both sides of the markers. Rep dec every 2<sup>nd</sup> rnd altog. 8 times = 152-160-168-176 sts on a rnd. When work measures 16-17-18-19 cm/6.3-6.7-7.1-7.5 in, measured from crotch, work short rows for back: Beg from mid back, K8, turn, P16. Cont working in the same way, 8

sts more each time, turning 4 times more at each side. Work 1 rnd in St st over all sts, and dec evenly across number of sts to be 130-138-150-162 sts. Work 5 cm/2 in in K1,P1 rib. Bind off rather loosely. Fold rib in double, and sew on WS. Weave in all ends on WS. Sew crotch seam. Thread elastic through casing on waist.



Pattern for knee-length socks



# Viking Merino Soft

## Sweater and hat

1404-12

Size: 3/6 – 9 – 12/18 months – 2/4 yrs

Chest: 46 – 51 – 57 – 63 cm

18.1-20.1-22.4-24.8 in

Length: 24 – 28 – 32 – 38 cm

9.4-11-12.6-15 in

Sleeve length: 15 – 18 – 21 – 25 cm

5.9-7.1-8.3-9.8 in

**ALTERNATIVE YARN:** Viking Merino Soft (100% Merino Wool-Superwash) Viking Baby ull (100% merino wool), Viking Alpaca Fine (85% Superfine Alpaca, 15% Highland wool), 50 g ball

White, 700 : 2 – 2 – 3 – 3 balls

Blue, 727 : 1 – 2 – 2 – 2 balls

Green, 729 : 1 – 1 – 1 – 1 ball

+ 1 extra ball White, 700, for hat

Circular needle and double pointed needles size 2½ and 3 mm – US 1 or 2 and 2 or 3 – UK/Canadian 13 or 12 and 11 + 1 button

**Gauge:** 28 sts = approx. 10 cm/4 in over St st using needles size 3 mm. **Check your gauge to ensure success.**

When working in a patt with 2 clrs, it's important to maintain the order of yarns on your finger. Always hold the darker clr in front throughout the whole project.

Using needles size 2½ mm and white yarn, cast on 128 – 144 – 160 – 176 sts. Work in rnds approx. 2 – 2 – 3 – 3 cm/0.8-0.8-1.2-1.2 in in K1,P1 rib. Change to needles size 3 mm. Work 1 rnd in St st. Place markers each side, 64 – 72 – 80 – 88 sts for both back and front. Work in patt B-B-A-A, and after that in St st with white yarn until work measures approx. 13 – 16 – 19 – 24 cm/5.1-6.3-7.5-9.4 in. Bind off at each side 10 sts for armholes (5 sts both sides of the markers).

**Sleeves:** Using needles size 2½ mm and white yarn, cast on 40 – 42 – 42 – 44 sts. Work in rnds approx. 2-2-3-3 cm/0.8-0.8-1.2-1.2 in in K1,P1 rib. Change to needles size 3 mm. Work 1 rnd in St st, and evenly across number of sts to be 44 – 46 – 48 – 50 sts. Place a marker beg of rnd (= mid under sleeve). Work in patt B, and inc **same time** 1 st both sides of the marker approx. every 3-3-3-2 cm/1.2-1.2-1.2-0.8 in. When patt B is ready, cont working in St st with white yarn until there is 52 – 56 – 60 – 70 sts on a rnd and sleeve measures approx. 15 – 18 – 21 – 25 cm/5.9-

7.1-8.3-9.8 in. Bind off 10 sts mid under sleeve (5 sts both sides of the marker).

**Yoke:** Slip sleeves on same circular needle as body, over the bound-off sts for armholes = altog. 192 – 216 – 240

– 276 sts. Beg rnd from back, left shoulder. Work and dec for yoke in patt C as charted. Change to needles size 2½ mm. Work 1 rnd in St st. Cont working back and forth in K1,P1 rib until neck band measures approx. 4 – 4 – 5 – 5 cm/1.6-1.6-2-2 in. Bind off in rib. Fold neck edge in double, and sew on WS.

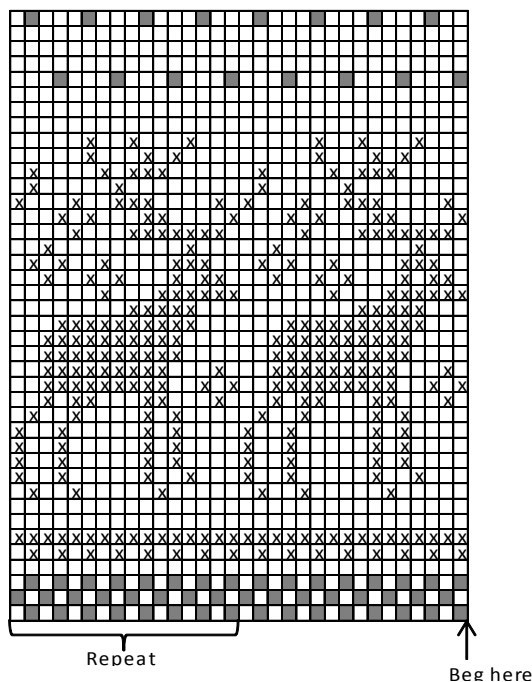
Crochet sc-row over the double edges of neck band. Crochet a buttonhole loop at one side.

Weave in all ends on WS. Sew under arm seams.

### HAT

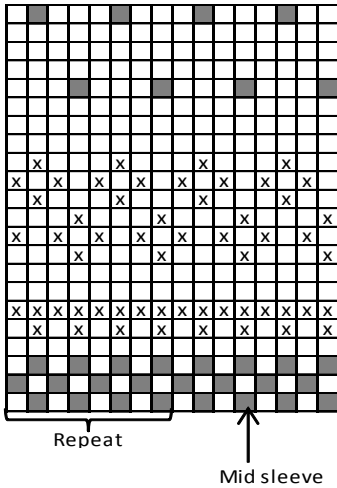
Using needles size 2½ mm and white yarn, cast on 108 – 120 – 120 – 132 sts. Work in rnds approx. 2½ cm/1 in in K1,P1 rib. Change to needles size 3 mm. Work 2 rnds in St st. Work in patt D, and after that cont working in St st with white yarn. **But** when work measures approx. 14 – 16 – 18 – 19 cm/5.5-6.3-7.1-7.5 in, beg dec. Knit all sts tog in pairs. Work 1 rnd in St st. Rep dec until 14 – 15 – 15 – 17 sts rem on a rnd. Break yarn, and thread through rem sts.

Pattern A

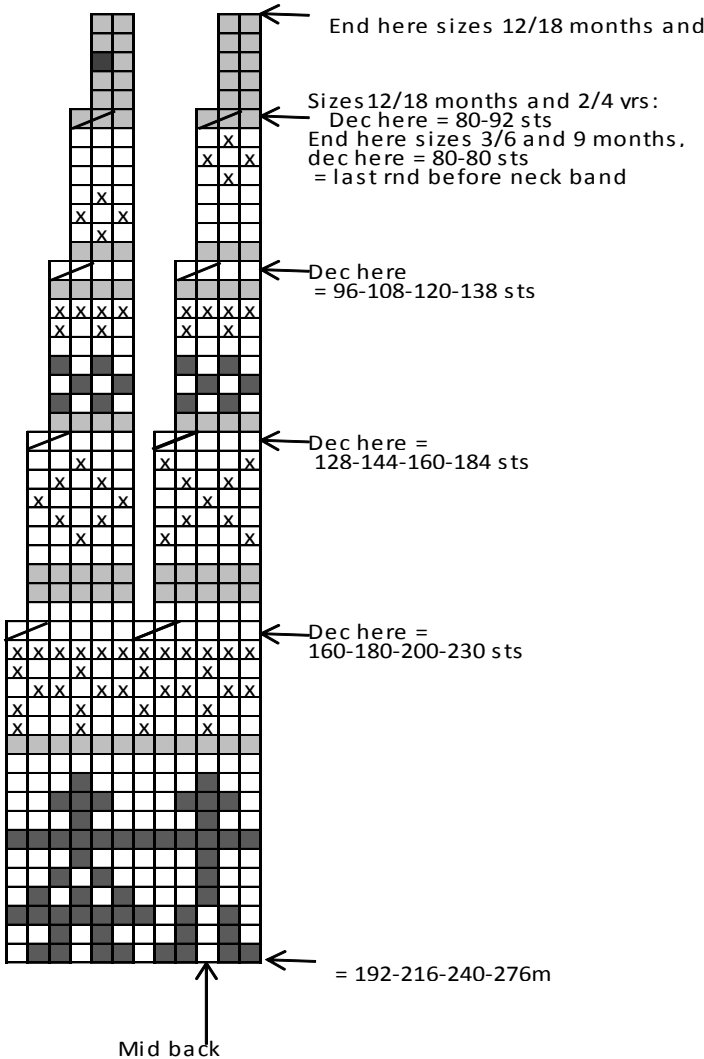


■ : green  
□ : white  
⊗ : blue

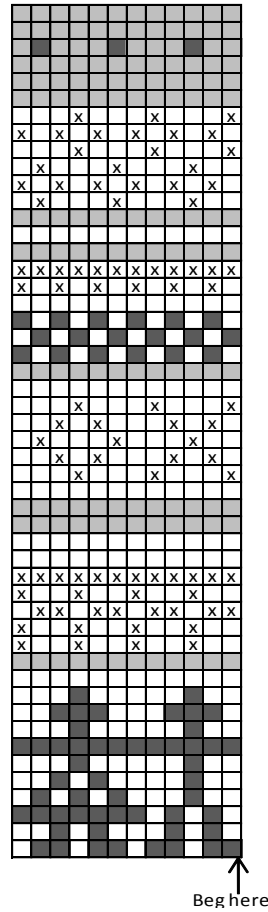
Pattern B



Pattern C



Pattern D, hat



- = White
- = Green
- = Blue
- = These rnds are worked in St st with white yarn not worked for sizes 3/6 and 9 months
- = K2tog

## Viking Merino Soft Blanket

1404-13

Size:

54 x 80 cm

21.3 x 31.5 in

**ALTERNATIVE YARN:** Viking Merino Soft (100% Merino Wool-Superwash) Viking Baby ull (100% merino wool), Viking pure milk fiber (100% milk fiber), Viking Alpaca Fine (85% Superfine Alpaca, 15% Highland wool), 50 g ball

Violet, 769 : 3 balls  
 Light Pink, 764 : 2 balls  
 Pink, 765 : 2 balls

Circular needle and double pointed needles size 2 ½ and 3 mm – US 1 or 2 and 2 or 3 – UK/Canadian 13 or 12 and 11

**Gauge:** 28 sts = approx. 10 cm/4 in over St st using needles size 3 mm. **Check your gauge to ensure success.**

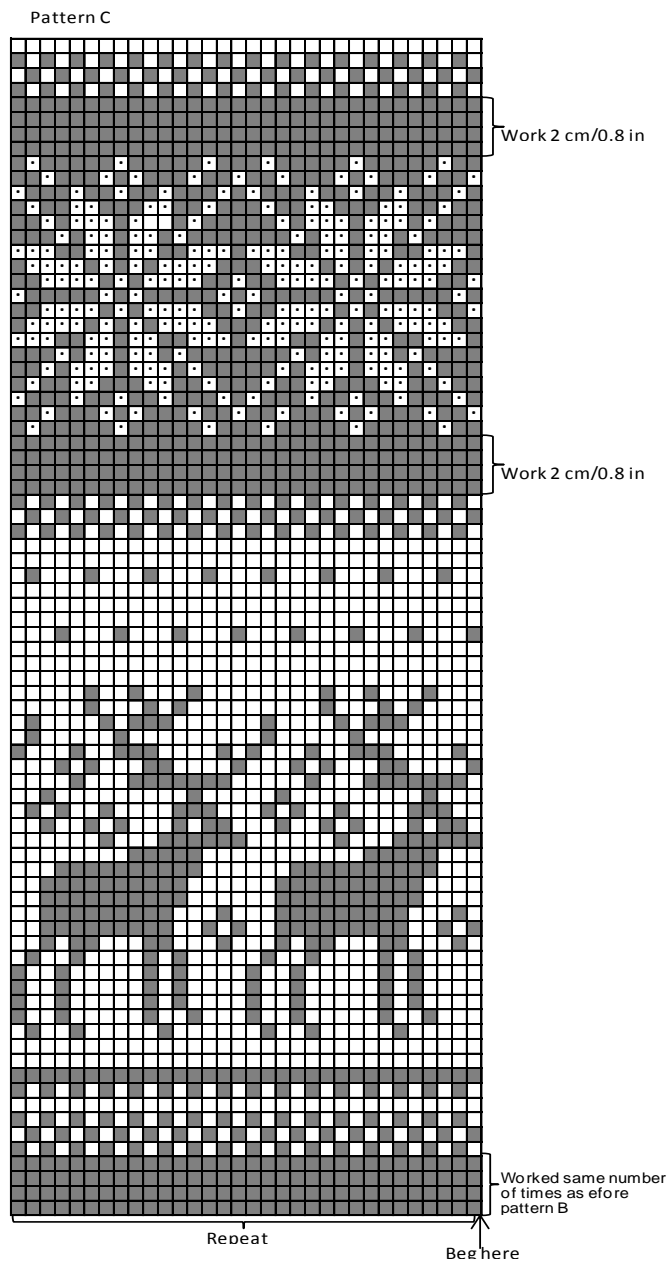
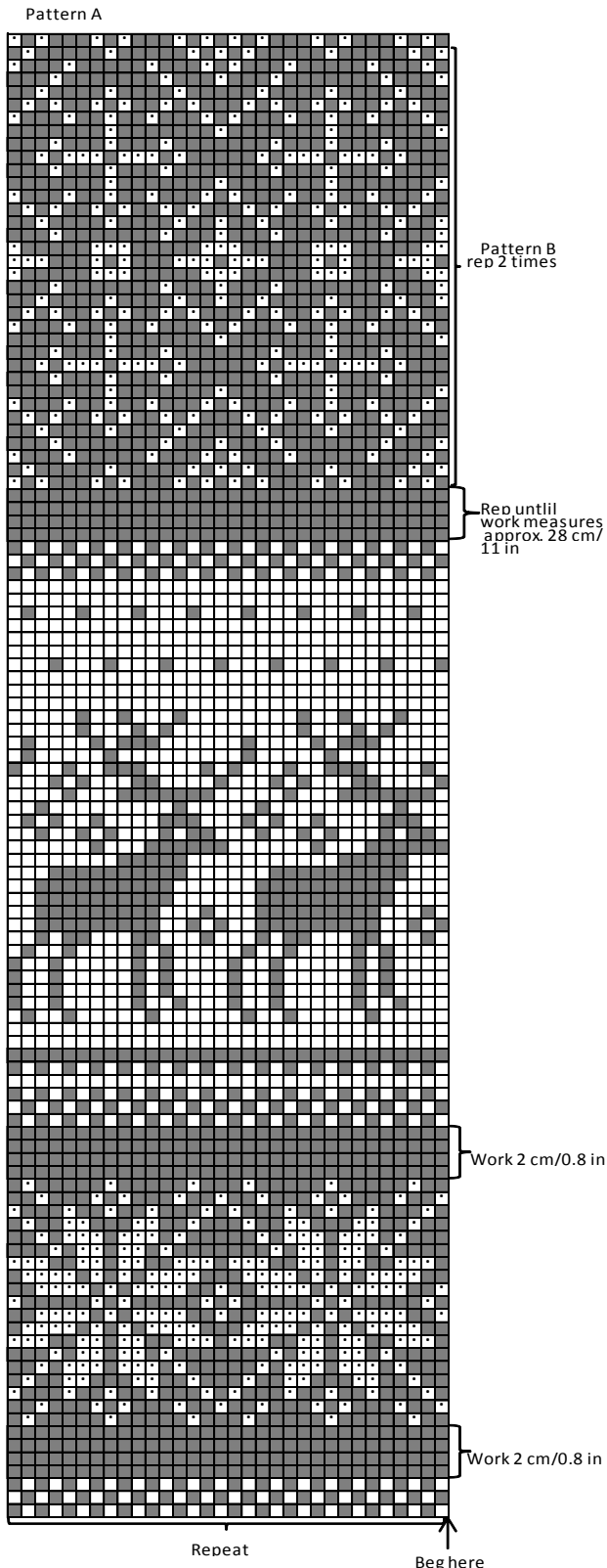
When working in a patt with 2 clrs, it's important to maintain the order of yarns over your finger. Always hold the darker clr in front throughout the whole project.

Using needles size 2½ mm and light pink yarn, cast on 149 sts. Work back and forth approx. 2 cm/0.8 in in K1,P1 rib. Slip first and last 10 sts on holder (= sts for side bands). Change to needles size 3 mm. Cast on 4 new sts to the end of the row. Purl these new sts every rnd (= to be cut open, not incl in the number of sts). Work in rnds in patt A = whole chart, and after that in patt B, rep once, and then in patt C. Slip sts on extra needle. Work for side bands. Slip 10 sts from holder over needles size 2 ½ mm. Cast on 5 new sts with light pink yarn to the edge facing



the blanket. Work in St st over the new sts = seam allowance. Cont working in rib over rem sts. Work until side band measures approx. 75 cm/29.5 in (it's important that side band is not too long). Bind off seam allowance sts, and leave rem 10 sts on holder. Work same for the other side band, but in reverse.

**Finishing:** Dampen work slightly from WS. Sew 2 dense zigzag seams over the purl-sts. Cut open between seams. Sew normal zigzag over cut edges. Sew on side bands. Sew seam allowances over cut edges. Slip sts from holders over same needle as blanket. Work back and forth approx. 2 cm/0.8 in in K1,P1 rib with light pink yarn over all sts. Bind off in rib.



- = Light Pink
- ◻ = Pink
- = Violet

## Viking Merino Soft

### Sweater, pants, hat and socks 1404-14

Size: 3/6 – 9 – 12/18 months – 2 yrs

Chest : 45 – 51 – 56 – 60 cm  
17.7 – 20.1 – 22 – 23.6 in

Length: 24 – 29 – 33 – 36 cm  
9.4 – 11.4 – 13 – 14.2 in

Sleeve length: 15 – 18 – 21 – 24 cm  
5.9 – 7.1 – 8.3 – 9.4 in

**ALTERNATIVE YARN:** Viking Merino Soft (100% Merino Wool-Superwash) Viking Baby ull (100% merino wool), Viking Alpaca Fine (85% Superfine Alpaca, 15% Highland wool), 50 g ball

#### Sweater, hat and socks

Navy Blue, 726 : 3 – 3 – 4 – 4 balls

White, 702 : 1 – 1 – 1 – 1 ball

#### Pants

White, 700 : 2 – 2 – 3 – 3 balls

Needles size 2½ and 3 mm –US 1or 2 and 2 or 3 – UK/Canadian 13 or 12 and 11

+ 1 button

**Gauge:** 28 sts = approx. 10 cm/4 in over St st using needles size 3 mm. **Check your gauge to ensure success.**

When working in a patt with 2 clr, it's important to maintain the order of yarns over your finger. Always hold the darker clr in front throughout the whole project.

Using needles size 2½ mm and navy blue yarn, cast on 126 – 142 – 158 – 170 sts. Work in rnds approx. 3 – 4 – 4 – 5 cm/1.2-1.6-1.6-2 in in K1,P1 rib. Change to needles size 3 mm. Work in St st. Place markers each side, 63 – 71 – 79 – 85 sts for both back and front. When work measures approx. 13 – 16 – 20 – 22 cm/5.1-6.3-7.9-8.7 in, bind off 8 – 10 – 10 – 10 sts at each side (4 – 5 – 5 – 5 sts both sides of the markers).

**Sleeves:** Using needles size 2½ mm and navy blue yarn, cast on 40 – 42 – 44 – 46 sts. Work in rnds approx. 3 – 4 – 4 – 5 cm/1.2-1.6-1.6-2 in in K1,P1 rib. Change to needles size 3 mm. Work in St st, and inc evenly across 1<sup>st</sup> rnd number of sts to be 43 – 45 – 47 – 49 sts. Place a marker beg of rnd (= mid under sleeve). Inc 1 st both sides of the marker approx. every 4-2-2-2 cm/ in until there is 49 – 57 – 61 – 67 sts on a rnd, and sleeve measures approx. 15 – 18 – 21 – 24 cm/5.9-7.1-8.3-9.4 in. Bind off 8 – 10 – 10 – 10 sts mid under sleeve (4 – 5 – 5 – 5 sts both sides of the marker).

**Yoke:** Slip all sts on same circular needle size 3 mm = 192 – 216 – 240 – 264 sts. Beg from back, left shoulder. Work 1 – 2 – 4 – 8 rnds in St st, and after that in patt A as charted

**Size 3/6 months:** Work for neck band after last dec rnd. Change to needles size 2½ mm. Work 1 rnd in St st, and then **back and forth** in K1,P1 rib until neck band measures approx. 4 cm/1.6 in. Bind off rather loosely. Crochet a dc-row along double split edges. Crochet 1 buttonhole loop at one edge of the neck band.

**Sizes 9 and 12/18months and 2 yrs:** When patt A is ready, change to needles size 2½ mm. Work 1 rnd in St st, and dec evenly across number of sts to be 80 – 88 – 88 sts. Work **back and forth** approx. 4 – 5 – 5 cm/1.6-2-2 in in K1,P1 rib. Bind off rather loosely in rib. Crochet a sc-row along double split edges. Crochet 1 buttonhole loop at one edge of the neck band.

**Finishing:** Sew under arm seams. Fold neck edge in double, and sew on WS.

## HAT

Using needles size 2½ mm and navy blue yarn, cast on 100 – 104 – 108 – 112 sts. Work in rnds approx. 6 – 7 – 7 – 8 cm/2.4-2.8-2.8-3.1 in in K1,P1 rib. Change to needles size 3 mm. Work 1 rnd in St st, and inc evenly across number of sts to be 108 – 120 – 120 – 132 sts. Work in patt C as charted, and after that in St st with navy blue yarn until hat measures approx. 17 – 19 – 20 – 22 cm/6.7-7.5-7.9-8.7 in. Dec for crown: \*K2, K2tog\*, rep \*-\* across the rnd. Knit 1 rnd without dec. Rep dec with 1 st less between decreases. Knit 1 rnd. Next rnd: Knit all sts tog in pairs. Knit 1 rnd. Rep dec = 14 – 15 – 15 – 17 sts rem. Break yarn, and thread through rem sts.

## PANTS

Beg from waist.

Using needles size 2½ mm and white yarn, cast on 120 – 132 – 144 – 156 sts. Work in rnds approx. 2 cm/0.8 in in K1,P1 rib. Change to needles size 3 mm. Work in St st. Place markers each side, 61 – 67 – 73 – 79 sts for back, and 59 – 65 – 71 – 77 sts for front, and also mid front and back.

Beg from mid back. K9, turn, P19. Turn, and work 7 – 8 – 9 – 10 sts more each time until you have reached the side markers. Cont working in rnds in St st over all sts. When work measures approx. 14 – 15 – 17 – 19 cm/5.5-5.9-6.7-7.5 in (measured mid front), **inc** 1 st both sides of markers mid front and back every

2<sup>nd</sup> rnd altog. 6 times. There is now 144 – 156 – 168 – 180 sts on a rnd.

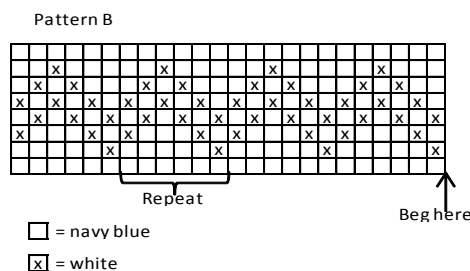
Work each leg separately: Beg from mid front, and work until mid back = 72 – 78 – 84 – 90 sts on a rnd. Work 2 cm/0.8 in in St st. Change to needles size 2½ mm, and dec evenly across next rnd number of sts to be 64 – 70 – 76 – 82 sts. Cont working in rnds in K1,P1 rib until leg measures approx. 12 – 12 – 13 – 13 cm/4.7-4.7-5.1-5.1 in. Bind off in rib. Work same for the other leg.

## SOCKS

Using needles size 2½ mm and navy blue yarn, cast on 42 – 42 – 48 – 48 sts. Work in rnds approx. 4 – 4 – 5 – 5 cm/1.6-1.6-2-2 in in K1,P1 rib. Change to needles size 3 mm, and work in St st. Work in patt B. Slip 21 – 21 – 24 – 24 front sts on holder, and work for heel over rem 21 – 21 – 24 – 24 sts (beg of rnd = inner seam of foot). Work back and forth approx. 5 – 5 – 6 – 6 cm/2-2-2.4-2.4 in over heel sts. K13 – 13 – 16 – 16, turn. Slip first st, P5 – 5 – 6 – 6, turn. Slip first st, work 1 st more each time until 2 sts rem at both sides. Turn, knit all sts. You have now reached left side of the heel. Pick up approx. 9 – 9 – 10 – 10 sts both sides of the heel, and cont working in rnds in St st with navy blue yarn over all sts. Dec **same time** 1 st both sides of the sts that were on holder every rnd until 42 – 42 – 46 – 48 sts rem. Cont working until sock measures approx. 6 – 8 – 10 – 12 cm/2.4-3.1-4-4.7 in (or desired length before dec).

Beg dec: Place markers each side, with same number of sts for each side. Dec 1 st both sides of the markers every 2<sup>nd</sup> rnd 2 times, and then every rnd until 10 – 10 – 10 – 12 sts rem. Break yarn, thread through rem sts, tighten the yarn, and weave in on WS.

Knit same for the other sock.



# Viking Merino Soft

## Sweater, hat and socks

1404-15

Size:	3/6 – 9 – 12/18 moths – 2/4 yrs
Chest:	43 – 51 – 60 – 69 cm 16.9 – 20.1 – 23.6 – 27.2 in
Length:	24 – 28 – 32 – 38 cm 9.4 – 11 – 12.6 – 15 in
Sleeve length :	19 – 22 – 25 – 30 cm 7.5 – 8.7 – 9.8 – 11.8 in

**ALTERNATIVE YARNS:** Viking Merino Soft (100 % Merino Wool-Superwash) Viking Baby ull (100 % merino wool), Viking Alpaca Fine ( 85 % Superfine Alpaca, 15 % Highland wool ), 50 g ball

### Sweater and hat

Red, 750 :	3-3-4-4 balls
White, 700 :	1-1-1-1ball
Black, 703 :	1-1-1-1ball

Circular needle size 2 ½ and 3 mm – US 1 or 2 and 2 or 3 – UK/Canadian 13 or 12 and 11  
+ 1 button

**Gauge:** 28 sts = approx. 10 cm/4 in over St st using needles size 3 mm. **Check your gauge to ensure success.**

When working in a patt with 2 clr, it's important to maintain the order of yarns over your needle. Always hold the darker yarn in front throughout the whole project.

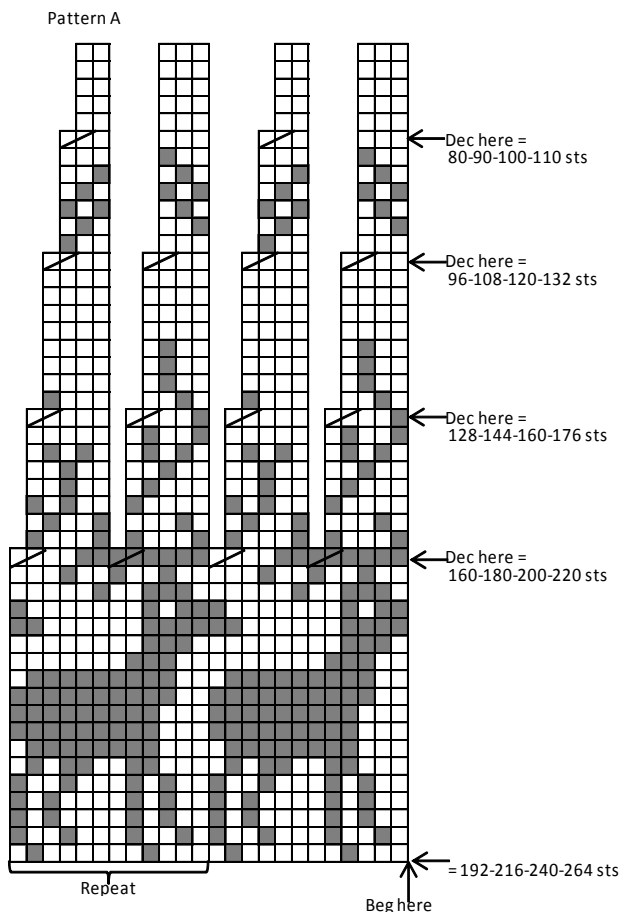
### SWEATER

Using needles size 2½ mm and red yarn, cast on 120-144-168-192 sts. Work in rnds 2-2-3-3 cm/0.8-0.8-1.2-1.2 in in K1,P1 rib. Change to needles size 3 mm. Work in St st. Place markers each side, 59-71-83-95 sts for back, and 61-73-85-97 sts for front. When work measures approx. 10-12-15-21 cm/4-4.7-5.9-8.3 in, work in patt I as charted, and after that in St st with black yarn. When work measures 20-24-28-33 cm/7.9-9.4-11-13 in, bind off mid front 23-25-27-29 sts for neck edge. Cont working back and forth, and bind off at each edge every 2<sup>nd</sup> row 1x6 sts, 1x2 sts, and 1x1 st (same for all sizes). When work measures the given length, bind off.

**Sleeves:** Using needles size 2½ mm and red yarn, cast on 40-44-46-48 sts. Work 2-2-3-3 cm/0.8-0.8-1.2-1.2 in in K1,P1 rib. Change to needles size 3 mm. Inc evenly across 1<sup>st</sup> rnd number of sts to be 45-47-51-55 sts. Place a marker beg of rnd (= mid under sleeve). Inc 1 st both sides of the marker approx. every 2½ - 1 ½ - 2 - 1 ½ cm/ in. When sleeve measures approx. 11-14-17-22 cm/4.3-5.5-6.7-8.7 in, work in patt II, and then in patt III. When patt III is ready, cont working in St st with black yarn until there is 61-67-73-83 sts on a rnd, and sleeve measures approx. 19-22-25-30 cm/ 7.5-8.7-7.9-11.8in. Turn work inside out, and work 5 rnds in St st for seam allowance. Bind off.

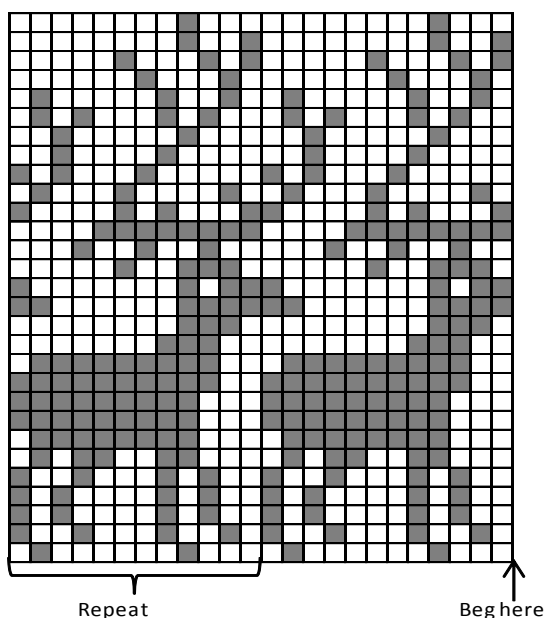
**Finishing:** Dampen pieces slightly from WS. Sew 2 dense zigzag seams around armholes (measure width from sleeve top). Cut open between seams. Sew normal zigzag over cut edges. Join shoulder seams, 10-15-20-25 sts for each shoulder.

**Cutting neck edge:** Sew a curving marker thread for neck edge, approx. 4-4-4-5 cm/1.6-1.6-1.6-2 in below upper edge. Using needles size 2½ mm and red yarn, pick up approx. 45-51-53-57 sts along the marked line (check that patt is same on each side), + sts from back = 84-92-96-102 sts. Work 1 rnd in St st, and after that back and forth in K1,P1 rib until neck band measures 4-4-5-6 cm/1.6-1.6-2-2.4 in. Bind off rather loosely in rib. Sew 2 dense zigzag seams along innerside of neck edge. Cut off all



- = Navy Blue
- = White
- ▤ = K2tog

Pattern C for hat



extras. Sew normal zigzag over cut edges. Fold neck band in double over cut edge, and sew on WS.

Crochet sc-row along double neck band (through both edges).  
Crochet a buttonhole loop to one side.

### HAT

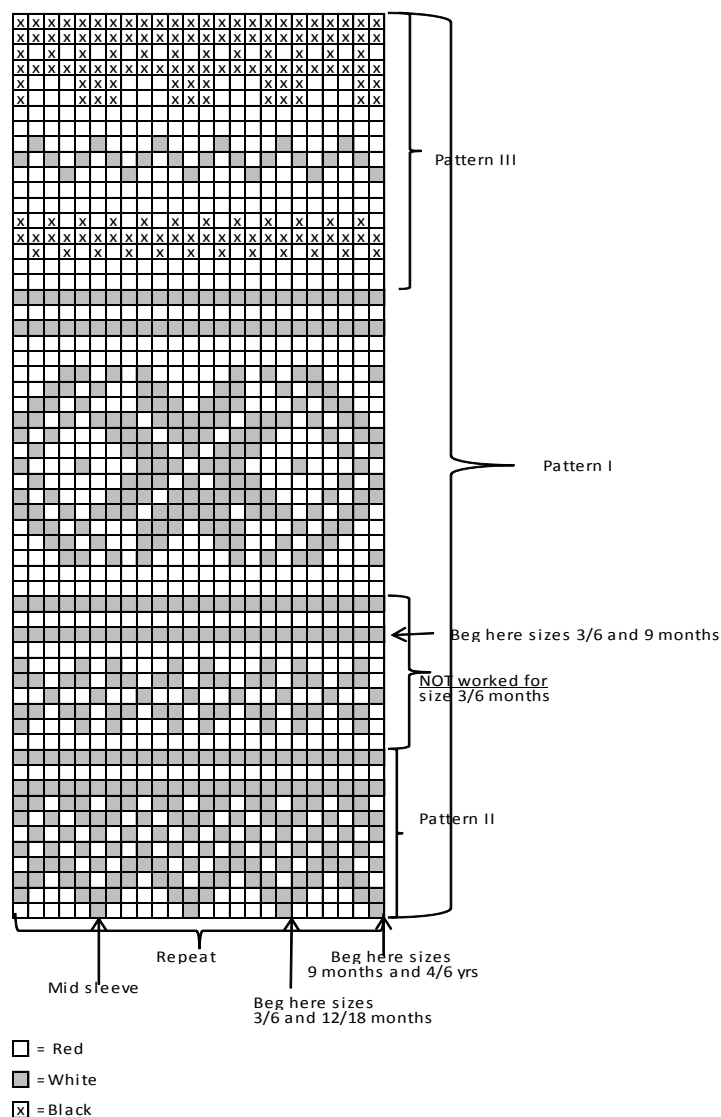
Using needles size 2½ mm and red yarn, cast on 108-116-120-128-132 sts. Work in rnds 8-9-10-12 cm/3.1-3.5-4-4.7 in K1,P1 rib. Change to needles size 3 mm. Work 1 rnd in St st, and inc evenly across number of sts to be 120-120-144-144 sts. Work in patt I as charted (beg sizes 3/6 and 9 months as charted). When work measures 21-22-23-24 cm/8.3-8.7-9.1-9.4 in, measured from cast-on edge, beg dec for crown: \*K2, K2tog\*, rep \*-\* across the rnd. Work 3 rnds without dec. \*K1, K2og\*, rep \*-\* across the rnd. Work 2 rnds without dec. Knit all sts tog in pairs. Work 1 rnd without dec. Break yarn, thread through rem sts, and weave in on WS.

### SOCKS

Using needles size 2½ mm and red yarn, cast on 42-44-46-48 sts. Work in rnds 8 cm/3.1 in in K1,P1 rib. Change to needles size 3 mm. Work for heel over mid back 21-22-23-24 sts as foll: Knit until 1 st rem at one side, turn. Purl until 1 st rem at the other side. Turn, and work 1 st less each time until 7-6-7-8 mid sts rem. Turn, and work 1 st more each row, but pick up the strand between sts over the needle tbl before turning, and knit tog with next st in order to avoid holes in the heel. When you have returned all sts back to work again, cont working in rnds in St st over all sts. Cont working until foot measures 7-8-10-13 cm/2.8-3.1-4-5.1 in, or desired length before dec.

Beg dec: Place markers each side, same number of sts for both sides. Dec 1 st both sides of the markers every 2<sup>nd</sup> rnd 1-2-2-2 times, and then every rnd until 10-12-10-12 sts rem. Break yarn, thread through rem sts, tighten the yarn, and weave in on WS.

Work same for the other sock.



## Viking Merino Soft

### Cardigan, pants and hat 1404-16

Size:	3	6	9	12/18 months	2	4 yrs
Chest	42	47	51	55	60	64 cm
	16.5	18.5	20.1	21.7	23.6	25.2 in
Length	24	26	28	33	36	40 cm
	9.4	10.2	11	13	14.2	15.7 in
Sleeve length	18	20	22	26	28	31 cm
	7.1	7.9	8.7	10.2	11	12.2 in

**ALTERNATIVE YARNS:** Viking Baby ull (100 % merino wool), Viking pure milk fiber (100% milk fiber), Viking Alpaca Fine ( 85% Superfine Alpaca, 15% Highland wool ), Merino Soft ( 100% Merino wool, superwash), 50 g ball

#### Whole set:

Navy Blue, 726 :	4-4-5-5-6-6 balls
White, 700 :	1-1-1-1-1-1 ball
Red, 750 :	1-1-1-1-1-1 ball

Circular needle size 2 ½ and 3 mm – US 1 or 2 and 2 or 3 – UK/Canadian 13 or 12 and 11

**Gauge:** 28 sts = approx. 10 cm/4 in over St st using needles size 3 mm. **Check your gauge to ensure success.**

When working in a patt with 2 clr, it's important to maintain the order of yarns over your finger. Always hold the darker clr in front throughout the whole project.

## BODY

Using needles size 2½ mm and navy blue yarn, cast on 131-143-155-167-179-187 sts. Work back and forth 3-3-3-4-4-4 cm/1.2-1.2-1.2-1.6-1.6-1.6 in in K1,P1 rib. When rib measures 2 cm/0.8 in, make a buttonhole at one edge (left edge for boy, right for girl), 3 sts inside front edge. Buttonhole: Bind off 3 sts. Next row: Cast on 3 sts over the bound-off sts. When rib measures 3-3-3-4-4-4 cm/1.2-1.2-1.2-1.6-1.6-1.6 in, slip first and last 9 sts on holders (= sts for front bands). Change to needles size 3 mm. Place markers each side, 59-67-71-77-83-87 sts for back, and 27-29-33-36-39-41 sts for both fronts. Cont working in rnds in St st, and cast on 4 new sts to the end of the row. Purl these new sts every rnd (= to e cut open, not incl in the number of sts). When work measures 10-12-12-17-20-24 cm/4-4.7-4.7-6.7-7.9-9.4 in, work in patt I as charted. When work measures 20-23-24-29-32-35 cm/7.9-9.1-9.4-11.4-12.6-13.8 in, bind off mid front 18-22-26-30-32-36 sts for neck edge (incl purl sts). Cont working back and forth. Bind off at each edge every 2<sup>nd</sup> row 1x3 sts, 1x2 sts, and 1x1 st = 83-91-99-107-117-121 sts. Cont working in patt I, and after that with red yarn until work measures the given length, or as desired. Bind off.

## SLEEVES

Using needles size 2½ mm and navy blue yarn, cast on 34-34-36-38-38-42 sts. Work in rnds 3 cm/1.2 in in K1,P1 rib. Change to needles size 3 mm. Knit 1 rnd, and inc evenly across number of sts to be 43-43-45-47-47-53 sts. Place a marker around mid st = mid on top of the sleeve. Cont working in St st, but purl last st every rnd (= mid under sleeve). Inc 1 st both sides of the purl-st approx. every 1½ cm/0.6 in (same for all sizes) until there is 57-61-67-73-79-85 sts on a rnd. When work measures 10-12-14-18-20-23 cm/4-4.7-5.5-7.1-7.9-9.1 in, work in patt II as charted (check from mid st where to beg patt), and after that in patt III. When patt III is ready, turn work inside out. Work 5 rnds in St st for seam allowance. Bind off.

## FINISHING

Mark the armholes (approx. 10-11-12-13-14-15 cm/4-4.3-4.7-5.1-5.5-5.9 in) on each side, or measure width from sleeve top. Sew 2 dense zigzag seams around armholes. Cut open between seams. Sew normal zigzag over cut edges.

Join shoulder seams.

**Front band without buttonholes:** Slip sts from holder over needles size 2½ mm, and cast on 4 sts at the edge facing the body (= seam allowance). Work in rib over front and sts, and in St st over seam allowance sts. Cont working until front band reaches neck edge. Take care that front band doesn't turn out to be too long. Bind off seam allowance sts, and leave rem sts on holder.

**Front band with buttonholes:** Work same as for the other front band, but with seam allowance on the opposite side, and with 5 buttonholes evenly spaced apart. First buttonhole is already made, and last on will be made on last row before neck band. Buttonhole: Bind off 3 sts, Next row: Cast on 3 sts over the bound-off sts.

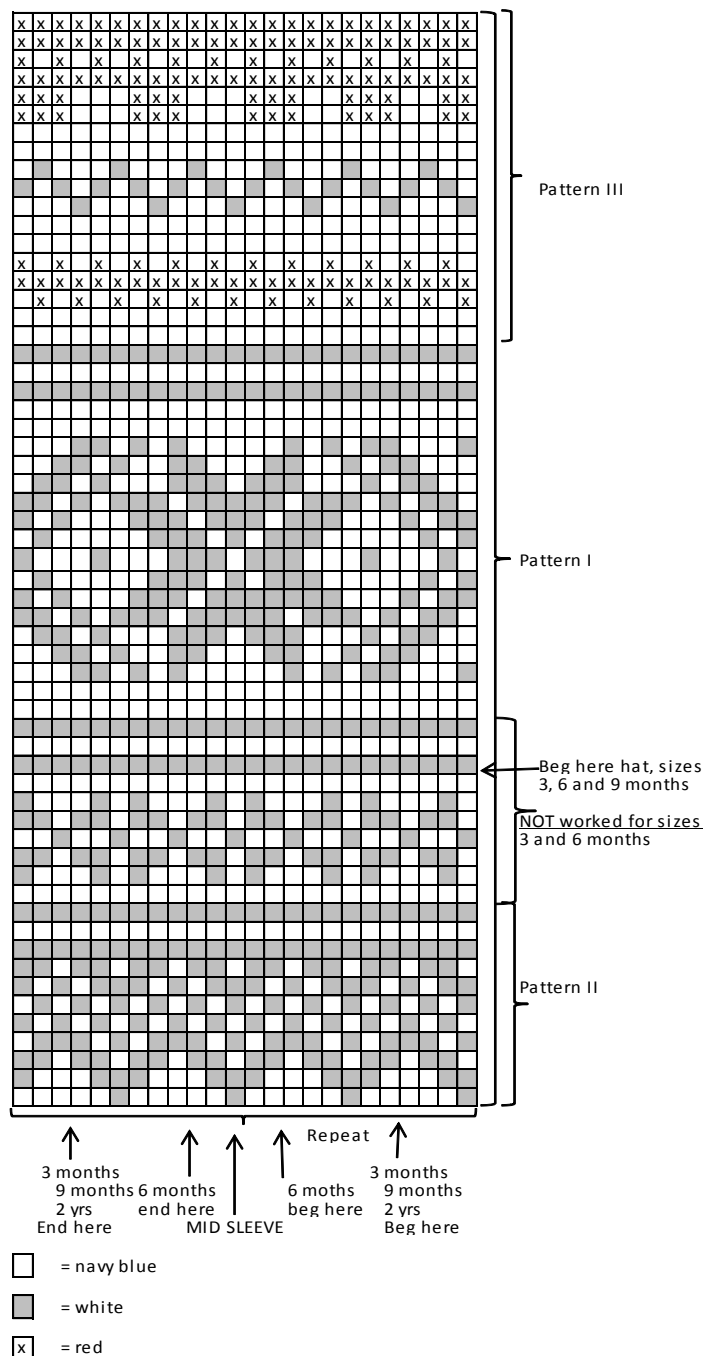
**Neck band:** Slip both 9 front band sts over needles, and using needles size 2½ mm and navy blue yarn, knit or pick up approx. 77-85-91-97-105-113 sts around neck edge. Work back and forth in rib until neck band measures 6 cm/2.4 in. Bind off rather loosely. Fold neck band in double, and sew on WS.

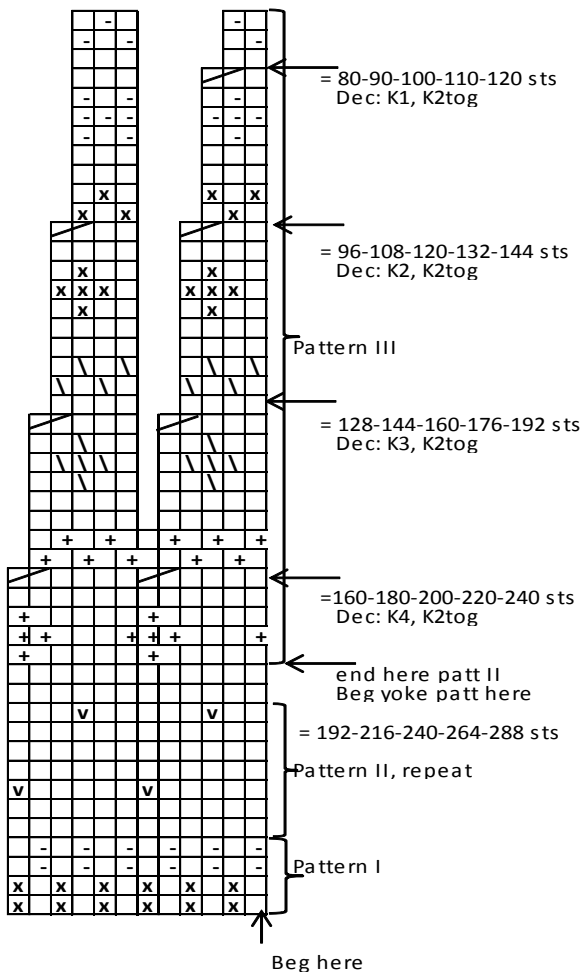
Sew on sleeves. Sew seam allowances over cut edges. Sew on front bands, and seam allowances over cut edges. Sew on buttons. Weave in all ends on WS.

## HAT

Using needles size 2½ mm and navy blue yarn, cast on 108-116-120-128-132 sts. Work in rnds 8-9-10-12 cm/3.1-3.5-4-4.7 in in K1,P1 rib. Change to needles size 3 mm. Work 1 rnd in St st, and inc evenly across number of sts to be 120-120-144-144 sts. Work in patt I as charted (beg sizes 3, 6 and 9 months as charted).

When work measures 21-22-23-24 cm/8.3-8.7-9.1-9.4 in, measured from cast-on edge, beg dec for crown: \*K2, K2tog\*, rep \*-\* across the rnd. Work 3 rnds without dec. \*K1, K2tog\*, rep \*-\* across rnd. Work 2 rnds without dec. Knit all sts tog in pairs. Work 1 rnd without dec. Break yarn, thread through rem sts, and weave in on WS. Make a red pom-pom, and fasten on top.





- = white (knit on RS, purl on WS)
- ☑ = white (purl on RS, knit on WS)
- ☒ = light grey
- ☐ = beige
- ☕ = dark violet
- ☒ = light violet
- ☒☑ = K2tog

## Viking Merino Soft Sweater, hat, pants and socks 1404-17

Size: 3/6 – 9 – 12/18 months – 2 – 4 yrs

Chest: 47 – 51 – 56 – 60 – 64 cm

18.5 – 20.1 – 22 – 23.6 – 25.2 in

Length: 24 – 29 – 33 – 36 – 40 cm

9.4 – 11.4 – 13 – 14.2 – 15.7 in

Sleeve length: 15 – 18 – 21 – 24 – 30 cm

5.9 – 7.1 – 8.3 – 9.4 – 11.8 in

Leg length: 18 – 21 – 23 – 27 – 33 cm

7.1 – 8.3 – 9.1 – 10.6 – 13 in

**ALTERNATIVE YARNS:** Viking Baby ull (100 % merino wool), Viking Alpaca Fine (85% Superfine Alpaca, 15% Highland wool), Viking Merino Soft (100% Merino wool, superwash), 50 g ball

### SWEATER AND HAT

Navy Blue, 726 :	3	3	4	4	5 balls
Red, 750 :	1	1	1	1	1 ball
White, 700 :	1	1	1	1	1 ball

### PANTS

Navy Blue, 726 :	2	2	3	3	4 balls
Red, 750 :					use rest from sweater

White, 700 :

use rest from sweater

Needles size 2 ½ and 3 mm – US 1 or 2 and 2 or 3 –

UK/Canadian 13 or 12 and 11

Crochet hook size 2½ mm – US – UK/Canadian

+ 1 small button for sweater

**Gauge:** 28 sts = approx. 10 cm/4 in over St st using needles size 3 mm. **Check your gauge to ensure success.**

### SWEATER

Using needles size 2½ mm and navy blue yarn, cast on 132-144-156-168-180 sts. Work in rnds approx. 2 – 2 – 3 – 3-3 cm/ in in K1,P1 rib. Change to needles size 3 mm. Work in St st. Place markers each side, 67-73-79-85-91 sts for front, and 65-71-77-83-89 sts for back. When work measures approx. 9 – 13 – 16 – 18-21 cm/3.5-5.1-6.3-7.1-8.3 in, work in patt I. Bind off on last rnd 10 sts at each side for armholes (5 sts both sides of the markers).

**Sleeves:** Using needles size 2½ mm and navy blue yarn, cast on 40 – 42 – 42 – 44-46 sts. Work in rnds approx. 2 – 2 – 3 – 3-3 cm/0.8-0.8-1.2-1.2 in in K1,P1 rib. Change to needles size 3 mm. Work in St st, and inc evenly across 1<sup>st</sup> rnd number of sts to be 47-49-51-53-55 sts. Place a marker beg of rnd (= mid under sleeve). When work measures approx. 12-15-18-21-27 cm/4.7-5.9-7.1-8.3-10.6 in, work in patt I. Bind off 10 mid sts on last patt rnd (5 sts both sides of the marker).

**Yoke:** Slip sleeves on same circular needle with body, over the bound-off sts for armholes = altog. 194-218-238-262-286 sts. Adjust the number of sts to be 192-216-240-264-288 sts. Beg from back, left shoulder. Beg patt II from same place as patt I. Work and dec as charted for yoke. Change to needles size 2½ mm and red yarn. Work 1 rnd in St st, and after that back and forth in K1,P1 rib until neck band measures approx. 4 – 4 – 5 – 5 – 5 cm/1.6-1.6-2-2-2 in. Bind off in rib. Fold neck band in double, and sew on WS.

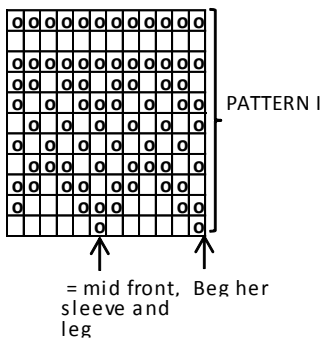
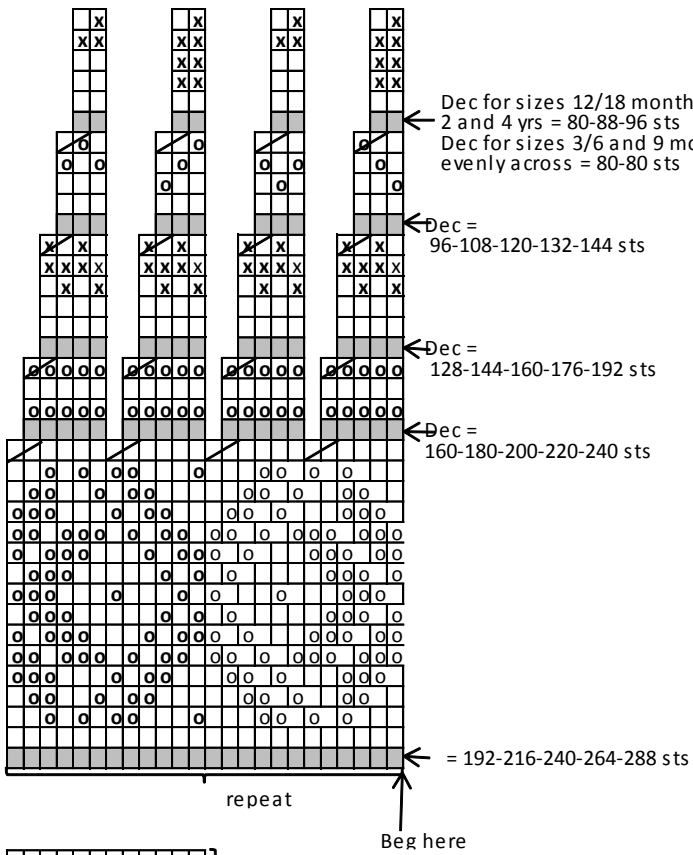
Crochet sc-row along double neck band edge. Crochet a buttonhole loop to one edge of the neck band.

Weave in all ends on WS. Sew under arm seams.

### HAT

Using needles size 2½ mm and navy blue yarn, cast on 96-108-120-130 sts. Work 8-8-10-10 cm/3.1-3.1-4-4 in in K1,P1 rib. Change to needles size 3 mm. Work 1 rnd in St st, and inc evenly across number of sts to be 144-144-168-168 sts. Work in patt I as charted, and after that work in patt II (without dec). When work measures 13-14-14-15 cm/ in, measured from the upper edge of rib, beg dec for crown: Knit all sts tog in pairs = 72-72-84-84 sts rem. Work 2 rnds without dec. Rep dec 2 more times every 3<sup>rd</sup> rnd = 18-18-21-21 sts rem. Break yarn, thread through rem sts, tighten the yarn, and weave in on WS.

Pattern II



- = navy blue
- = red
- = white
- = worked in St st with navy blue yarn, not worked for sizes 3/6 and 9 months, repeat 2 times for size 2/4 yrs
- = K2tog

**PANTS**

Beg from one leg. Using needles size 2½ mm and red yarn, cast on 44-48-48-52 sts. Work 3 cm/1.2 in in K1,P1 rib. Change to needles size 3 mm. Work 1 rnd in St st, and inc evenly across number of sts to be 58-62-64-66 sts. Work 1 rnd in St st with navy blue. Cont working in St st and patt I as charted (turn chart upside down). Check from mid st where to beg patt. Place a marker beg of rnd = inner seam of leg. Inc 1 st both sides of the marker approx. every 2½-2-3-2½ cm/1-0.8-1.2-1 in until there is altog. 70-80-80-90 sts on a rnd. Cont working until leg measures approx. 18-21-24-33 cm/ in (or desired length). Leave work aside, and knit same for the other leg. Slip both legs on same circular needle, inner seams facing each other. Place markers mid front and back. Cont working in rnds, and dec 1 st both sides of markers mid front and back. Rep dec every 2<sup>nd</sup> rnd altog. 4-4-

4-5 times = 124-144-144-160 sts on a rnd. Cont working until work measures approx. 16-18-22-25 cm/6.3-7.1-8.7-8.9 in, measured from crotch. Place markers each side, 62-72-72-80 sts for both back and front. Place a marker mid back. Work short rows for back: Beg from mid back – K5, turn, P10, turn, work 5 sts more each time altog. 4-5-5-5 times for both sides. Work 1 rnd in St st over all sts. Work 3 cm/1.2 in in K1,P1 rib, purl 1 rnd (= folding edge) + 3 cm/1.2 in in rib. Fold rib in double, and sew on WS.

Thread through ribbed casing. Weave in all ends on WS.

**Viking Merino Soft Sweater**

**1404-18**

Size:	3/6	9	12 /18 months	2	4 yrs
<b>Chest:</b>	approx. 47	51	56	60	64 cm
	18.5	20.1	22	23.6	25.2 in
<b>Length:</b>	approx. 24	29	33	36	40 cm
	9.4	11.4	13	14.2	15.7 in
<b>Sleeve length:</b>	approx. 15	18	21	24	30 cm
	5.9	7.1	8.3	9.4	11.8 in

**ALTERNATIVE YARNS:** Viking Baby ull (100 % merino wool), Viking Alpaca Fine ( 85% Superfine Alpaca, 15% Highland wool ), Viking Merino Soft ( 100% Merino wool, superwash), 50 g ball

White, 700	2	3	3	4	4 balls
Dark Violet, 769	1	1	1	1	1 ball
Light Violet, 767	1	1	1	1	1 ball
Light Grey, 713	1	1	1	1	1 ball
Beige, 707	1	1	1	1	1 ball

Double pointed needles and circular needle size 3 mm – US 2 or 3 – UK/Canadian 11  
 Crochet hook size 2½ mm – US B/1 or C/2 – UK/Canadian 12 + 1 small button

**Gauge:** 28 sts = approx. 10 cm/4 in over St st using needles size 3 mm. **Check your gauge to ensure success.**

**SWEATER**

Using needles size 3 mm and dark violet yarn, cast on 132-144-156-168-180 sts. Work 1 rnd in K1,P1 rib. Change to light violet yarn, and work 2 rnds in rib. Change to white yarn, and cont working until rib measures approx. 3 cm/1.2 in. Place markers each side, 67-73-79-85-91 sts for front, and 65-71-77-83-89 sts for back. Cont working in rnds in St st and patt I as charted. When patt is ready, cont in patt II until work measures 12-16-19-21-24 cm/4.7-6.3-7.5-8.3-9.4 in. Bind off 10 sts at each side (5 sts both sides of the markers). Leave work aside.

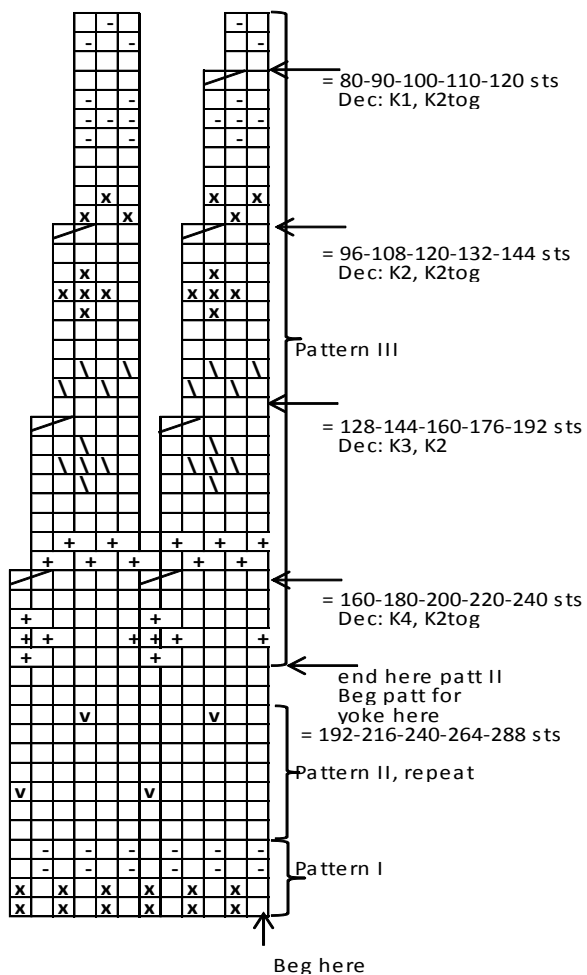
**Sleeves**

Using needles size 3 mm and dark violet yarn, cast on 40-42-44-46-46 sts. Work in rib with stripes same as for body. Work 1 rnd in St st, and inc evenly across number of sts to be 47-49-51-53-55 sts. Cont working in rnds in St st and patt I as charted. After that, cont working in patt II, but place a marker mid under sleeve. Inc 1 st both sides of the marker approx. every 6-3 ½ -3 ½- 3-3 cm/2.4-1.4-1.4-1.2-1.2 in until there is altog. 51-57-61-67-73 sts on a rnd (work in patt II over inc sts). Work until sleeve measures the given length, or as desired. Bind off 10 sts mid under sleeve (5 sts both sides of the marker). Leave work aside, and knit same for the other sleeve.

**Yoke:** Slip sleeves on same circular needle as body, over the bound-off sts for armholes = 194-218-238-262-286 sts. Adjust

number of sts to be 192-216-240-264-288 sts. Beg with 0-2-4-6-6 rnds in St st with white yarn. Cont working in rnds in patt III as charted. When patt III is ready, cont working in St st with white yarn.

**Neck band:** Beg from mid back. Work back and forth. Dec evenly across first row number of sts to be 80-88-94-98-102 sts. Cont working in K1,P1 rib until neck band measures approx. 2 cm/0.8 in. Change to dark violet yarn, work 1 rnd in rib, and bind off rather loosely in rib. Crochet a buttonhole loop to the upper edge of the neck band mid back, sew on a button. Sew under arm seam. Weave in all ends on WS.



- = white (knit on RS, purl on WS)
- ◻ = white (purl on RS, knit on WS)
- ⊠ = light grey
- ◻ = beige
- ⊕ = dark violet
- ◻ = light violet
- ⊞ = K2tog