

# Viking Alpaca Maya

## Scarf and hat

1308-1

Size, hat: S-M-L  
 Circumference: 50-53-57 cm  
 19.7-20.9-22.4 in  
 Size, scarf 25x77 cm  
 9.8x30.3 in

**ALTERNATIVE YARN:** Viking Alpaca Maya ( 85% Superfine alpaca, 15% Highland wool ),Viking Mohair ( 78 % mohair, 13 % wool, 9% nylon ),Viking Alpaca Superfine (100% alpaca superfine) 50 g ball, Viking Balder (100% wool, superwash) 100 g skein, Viking Naturgarn (100% wool ) 50 g ball

Dark pink, 760 : 2 - 2 - 2 balls

Circular needle size 7 mm – US 10½ or 11 – UK/Canadian 2 + 4 buttons

**Gauge:** 12 sts = approx. 10 cm/4 in over St st using needles size 7 mm. **Check your gauge to ensure success.**

### SCARF

Using needles size 7 mm, cast on 34 sts. Work back and forth approx. 7 cm/2.8 in in K2,P2 rib. Cont working in K2,P2 rib with first and last 4 sts, and St st over rem sts. When scarf measures approx. 70 cm/27.6 in, work K2,P2 rib over all sts. When work measures approx. 77 cm/30.3 in, bind off in rib.

**Finishing:** Fasten cast-on edge on left side of the last 25 cm/9.8 in with 3 buttons.

### HAT

Using needles size 7 mm, cast on 60 – 64 – 68 sts. Work in rnds in St st until hat measures approx. 18 – 20 – 22 cm/7.1-7.9-8.7 in. Dec for crown: Knit all sts tog in pairs. Knit 1 rnd. Rep dec until 15 – 16 – 17 sts rem on a rnd. Break yarn, thread through rem sts, tighten yarn slightly, and weave in on WS.

# Viking Alpaca Maya

## Sweater

1308-2

Size S – M/L – XL/XXL  
 Bust: 92 - 110 - 128 cm  
 36.2-43.3 -50.3 in  
 Length: 68 -70 - 70 cm  
 26.8-27.6 -27.6 in  
 Sleeve length: 49 - 50 - 50 cm  
 19.3-19.7-19.7 in

**ALTERNATIVE YARN:** Viking Alpaca Maya ( 85% Superfine alpaca, 15% Highland wool ),Viking Mohair ( 78 % mohair, 13 % wool, 9% nylon ),Viking Alpaca Superfine (100% alpaca superfine) 50 g ball, Viking Balder (100% wool, superwash) 100 g skein, Viking Naturgarn (100% wool ) 50 g ball

Off-White, 702	1	1	2	balls
Light Grey, 713	1	2	2	balls
Dark Grey, 715	1	2	2	balls
Moss Green, 730	1	2	2	balls

Circular needle and double pointed needles size 6 and 7 mm – US 10 and 10½ or 11 – UK/Canadian 4 and 2

**Gauge:** 12 sts = approx. 10 cm/4 in over St st using needles size 7 mm. **Check your gauge to ensure success.**

### STRIPES:

\*6 rows with light grey – 6 rows with dark grey – 4 rows with white – 6 rows with moss green – 6 rows with light grey – 4 rows with dark grey – 6 rows with white – 6 rows with moss green – 4 rows with light grey – 6 rows with dark grey – 6 rows with white – 4 rows with moss green\*, rep \*-\*

### BACK

Using needles size 7 mm and moss green yarn, cast on 55-66-77 sts. Work back and forth 4 rows in Garter st. Change to light grey yarn, and cont working in patt as charted with stripes. Cont working until back measures the given length. Bind off.

### FRONT

Work same as for back. When work measures approx. 58-59-59 cm/22.8-23.2-23.3 in, bind off mid 13-14-15 sts. Finish each side separately. (Note! If there aren't enough sts for both yo and K2tog, work sts in St st). Bind off at neck edge every 2<sup>nd</sup> row 1x3 sts, 1x2 sts, and 1x1 st. When front measures same as back, bind off.

Work same for the other side, rev all shaping.

### SLEEVES

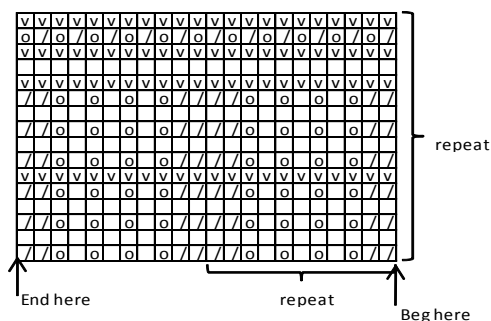
Using needles size 7 mm and moss green yarn, cast on 33-33-33 sts. Work back and forth 4 rows in Garter st. Change to light gray yarn, and cont working in patt with stripes same as for back and front. Inc 1 st at each side approx. every 4-3 ½ -3 ½ cm/1.6-1.4-1.4 in until there is altog. 55-59-59 sts on a row. When sleeve measures the given length, or as desired, bind off. Sew sleeve seam. Work same for the other sleeve.

### FINISHING

Sew sideseams, leaving approx. 22-24-24 cm/8.7-9.4-9.4 in for armholes. Sew shoulder seams.

**Neck band:** Using needles size 6 mm and dark green yarn, knit or pick up 58-60-62 sts around neck edge. Work 1 rnd in K1,P1 rib. Bind off in rib. Weave in all ends on WS. Sew on sleeves.

LACE PATTERN



- ☐ = Knit (knit on RS, purl on WS)
- ▤ = Purl (purl on RS, knit on S)
- ◻ = 1 yo
- ▧ = K2tog

# Viking Alpaca Maya

## Sweater with V-neck

1308-3

Size: S - M - L  
 Bust: 98 - 108 - 118 cm  
 38.6 - 42.5 - 46.5 in  
 Length: 67 - 68 - 68 cm  
 26.4 - 26.8 - 26.8 in  
 Sleeve length: 50 - 50 - 51 cm  
 19.7 - 19.7 - 20.1 in

**ALTERNATIVE YARN :** Viking Alpaca Maya ( 85% Superfine alpaca, 15% Highland wool ),Viking Mohair ( 78 % mohair, 13 % wool, 9% nylon ),Viking Alpaca Superfine (100% alpaca superfine) 50 g ball, Viking Balder (100% wool, superwash) 100 g skein, Viking Naturgarn (100% wool ) 50 g ball

Beige,707 4 - 4 - 5 balls

Circular needles size 6 and 7 mm – US 10½ or 11 – UK/Canadian 2

**Gauge:** 12 sts = approx. 10 cm/4 in over St st with needles size 7 mm. **Check your gauge to ensure success.**

**BACK**

Using needles size 6 mm, cast on 58-62-70 sts. Work back and forth 4 rows in K2,P2 rib. Change to needles size 7 mm. Cont working back and forth in patt as charted. Inc evenly across first row number of sts to be 59-65-71 sts. When work measures approx. 67-68-68 cm/26.4-26.8-26.8 in, bind off.

**FRONT**

Using needles size 6 mm, cast on 58-62-70 sts. Work back and forth 4 rows in K2,P2 rib. Change to needles size 7 mm. Cont working in patt as charted. Inc evenly across first row number of sts to be 89-65-71 sts. When work measures approx. 37-38-38 cm/14.6-15-15 in, bind off 5 mid sts. Finish each side separately. Beg with right front. Cont working in patt, and dec 1 st (= K2togtbl) every 4<sup>th</sup> row 9 times. Cont working until work measures approx. 67-68-68 cm/26.4-26.8-26.8 in. Bind off. Work same for the other side, rev all shaping.

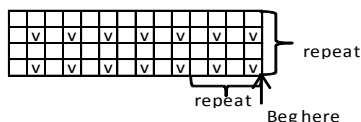
**SLEEVES**

Using needles size 6 or 7 mm, cast on 32-32-36 sts. Work back and forth 4 rows in K2,P2 rib. Cont working back and forth in patt as charted. Inc 1 st at each side approx. every 4 - 4 - 4 cm/1.6-1.6-1.6 in until there is altog. 55-57-59 sts on a row. When work measures approx. 50-50-51 cm/19.7-19.7-20.1 in, bind off. Sew sleeve seam. Work same for the other sleeve.

**Finishing:** Sew shoulder seams. Sew side seams, leaving approx. 12 cm/4.7 in splits at the lower edges, and approx. 23-24-25 cm/9.1-9.4-9.8 in for armholes. Sew on sleeves.

**Neck band:** Beg from right side, pick or knit up approx.94-98-102 sts along neck edge. Work back and forth 4 rows in K2,P2 rib. Bind off in rib.

Place neck band ends on top of each other mid front and sew to body. Weave in all ends on WS.



□ = knit (knit on RS, purl on WS)  
 ▣ = purl (purl on RS, knit on WS)

**Viking Alpaca Maya**

**Poncho and hat 1308-4**

<b>Size:</b>	S	-	M	-	L
<b>Width:</b>	110	-	120	-	130 cm
	43.3	-	47.2	-	51.2 in
<b>Circumference:</b>	50	-	53	-	56 cm
	19.7	-	20.9	-	22 in

**ALTERNATIVE YARN:** Viking Alpaca Maya ( 85% Superfine alpaca, 15% Highland wool ),Viking Mohair ( 78 % mohair, 13 % wool, 9% nylon ),Viking Alpaca Superfine (100% alpaca superfine) 50 g ball. Viking Balder (100% wool, superwash) 100 g skein. Viking Naturgarn (100% wool) 50 g ball.

Blue, 726 : 4 - 5 - 6 balls

Circular needles 80 and 40 cm/31.5 and 15.7 in size 7 mm – US 10½ and 11 – UK/Canadian 2

**Gauge:** 12 sts = approx. 10 cm/4 in over St st using needles size 7 mm. **Check your gauge to ensure success.**

**Pattern A:** \*Knit 12 rnds, purl 12 rnds\*, rep \*-\*.

**PONCHO**

Using needles size 7 mm, cast on 220 – 240 – 260 sts. Work 24 rnds in Garter st. Work patt A 2 times. Cont working in St st, and dec as foll: \*K8, K2tog\*, rep \*-\* across the rnd. Rep dec every 2<sup>nd</sup> rnd with 1 st less between dec until 88 – 96 – 104 sts rem. Work 1 rnd in St st. Next rnd: Dec evenly across the number of sts to be 88 – 88 – 88 sts. Work 12 cm/4.7 in in Garter st. Bind off.

**HAT**

Using needles size 7 mm, cast on 60 – 64 – 68 sts. Work 24 rnds I Garter st. Cont working in patt A. When work measures approx. 26 cm/10.2 in, beg dec for crown: Knit all sts tog in pairs. Knit 1 rnd. Rep dec every 2<sup>nd</sup> rnd until 8 – 8 - 9 sts rem. Break yarn, thread through rem sts, tighten the yarn slightly, and weave in on WS.

**Viking Alpaca Maya**

**Tunic 1308-5**

<b>Size:</b>	S	M	L
<b>Bust:</b>	87	93	100 cm
	34.3	36.6	39.4 in
<b>Length:</b>	78	80	80 cm
	30.7	31.5	31.5 in
<b>Sleeve length:</b>	18	19	20 cm
	7.1	7.5	7.9 in

**ALTERNATIVE YARN:** Viking Alpaca Maya ( 85% Superfine alpaca, 15% Highland wool ),Viking Mohair ( 78 % mohair, 13 % wool, 9% nylon ),Viking Alpaca Superfine (100% alpaca superfine) 50 g ball. Viking Balder (100% wool, superwash) 100 g skein. Viking Naturgarn (100% wool ) 50 g ball

Black, 703 3 3 4 skeins  
 Blue, 726 1 1 1 skein  
 White, 700 1 1 1 skein

Circular needle and double pointed needles size 6 or 7 mm – US 10, 10½ or 11 – UK/Canadian 4 or 2

**Gauge:** 12 sts = approx. 10 cm/4 in over St st using needles size 6 or 7 mm. **Check your gauge to ensure success.**

**Body**

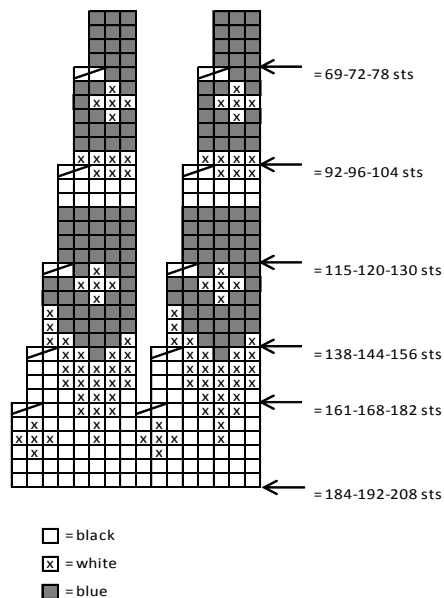
Using needles size 7 mm and black yarn, cast on 152-160-168 sts. Work in rnds 3 cm/1.2 in in K2,P2 rib. Place markers each side, 76-80-84 sts for both front and back, and another pair of markers, 1 mid front, and 1 mid back, 38-40-42 sts from each side marker. Cont working in rnds in St st. Dec 1 st both sides of each marker, before a marker: K2togtbl; after a marker: K2tog. Rep dec approx. every 7 cm/2.8 in altog. 6 times = 104-112-120 sts. Cont working without dec until work measures approx. 52-54-54 cm/20.5-21.3-21.3 in. Bind off 8 sts at each side (4 sts both sides of the side markers). Cast on with black yarn 49-51-53 sts over the bound-off sts for sleeves = 186-198-210 sts on a rnd. Work 2 rnds in St st over all sts, and dec on 2<sup>nd</sup> rnd evenly across the number of sts to be 184-192-208 sts. Cont working in rnds in patt and dec as charted = 69-72-78 sts on a rnd. Dec evenly across the rnd number of sts to

be 60-60-64 sts. Cont working in rnds in K2,P2 rib with blue yarn until collar measures approx. 20 cm/7.9 in. Bind off rather loosely.

### Armhole edges

Using needles size 7 mm and black yarn, pick or knit up approx. 52-52-56 sts around armholes. Work in rnds 5 cm/2 in in K2,P2 rib. Bind off. Work same for the other armhole.

**Finishing:** Weave in all ends on WS.



## Viking Alpaca Maya

### Cardigan

1308-6

Size	S	-	M	-	L
Bust:	100	-	110	-	120 cm
	39.4	-	43.3	-	47.2 in
Length:	77	-	78	-	78 cm
	30.3	-	30.7	-	30.7 in
Sleeve length:	50	-	50	-	51 cm
	19.7	-	19.7	-	20.1 in

**ALTERNATIVE YARN:** Viking Alpaca Maya ( 85% Superfine alpaca, 15% Highland wool ),Viking Mohair ( 78 % mohair, 13 % wool, 9% nylon ),Viking Alpaca Superfine (100% alpaca superfine) 50 g ball. Viking Balder (100% wool, superwash) 100 g skein. Viking Naturgarn (100% wool ) 50 g ball.

Violet, 769 6 - 7 - 8 balls

Circular needle size 6 and 7 mm – US 10 and 10½ or 11 – UK/Canadian 4 and 2

**Gauge:** 12 sts = approx. 10 cm/4 in over St st using needles size 7 mm. **Check your gauge to ensure success.**

### Back

Using needles size 7mm, cast on 54-62-66 sts. Work back and forth 4 rows in K2,P2 rib. Inc evenly across next row number of sts to be 59-65-71 sts. Cont working back and forth in patt as charted until work measures approx. 67-67-67 cm/26.4-26.4-26.4 in. Work back and forth in St st until work measures approx. 77-78-78 cm/30.3-30.7-30.7 in. Bind off.

### Right front

Using needles size 6 or 7 mm, cast on 26-30-34 sts. Work back and forth 4 rows in K2,P2 rib. Adjust across next row number of

sts to be 27-29-33 sts. Cont working back and forth in patt as charted until work measures approx. 67-67-67 cm/26.4-26.4-26.4 in. Cont working back and forth in St st until work measures approx.70-71-71 cm/27.6-28-28 in. Bind off at neck edge every 2<sup>nd</sup> row (RS row) 2x3 sts, 1x2 sts, and 1x1 st = 18-20-24 sts rem for shoulder. Work in St st until front measures same as back. Work same for left front, rev all shaping.

### Sleeves

Using needles size 7 mm, cast on 32-32-36 sts. Work back and forth 4 rows in K2,P2 rib. Inc 1 st, and cont working back and forth in patt as charted. Inc 1 st at each side approx. every 4 - 4 - 4 cm/1.6-1.6-1.6 in until there is altog. 55-57-59 sts. Work until sleeve measures approx. 50-50-51 cm/19.7-19.7-20.1 in. Bind off. Sew sleeve seam. Work same for the other sleeve.

### Finishing

Sew shoulder seams. Sew side seams, leaving approx. 15 cm/5.9 in splits to the lower edges, and approx. 23-24-25 cm/9.1-9.4-9.8 in for armholes.

**Neck band:** Beg from right front. Using needles size 6 mm, pick or knit up approx. 50-54-54 sts along neck edge. Work back and forth 8 cm/3.1 in in K2,P2 rib. Fold neck band in double, and sew on WS.

**Right front edge:** Beg from lower edge. Using needles size 6 mm, pick or knit up approx.12 sts per every 10 cm/4 in (also from neck band). Work back and forth approx. 4 cm/1.6 in in K2,P2 rib. Knit 1 row from WS (= folding edge) + 4 cm/1.6 in in rib. Bind off. Fold edge in double, and sew on WS.

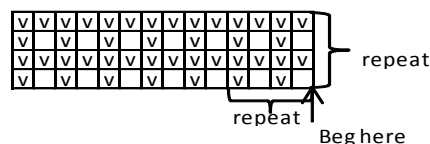
**Left front edge:** Work same as for right front edge.

Weave in all ends on WS. Sew 3 or 5 pairs of duffel coat toggles over the front edges, one below neck edge, rest approx. 10-12 cm/4-4.7 in spaced apart.

### HOOD

Using needles size 7 mm, cast on 62 – 66– 66 sts. Work back and forth 4 cm/1.6 in in K2,P2 rib. Knit 1 row from WS = folding edge + 4 cm/1.6 in in rib. Inc 1 st on next row, and cont working in patt as charted until work measures approx. 28 – 30 – 30 cm/11-11.8-11.8 in. Bind off 17 mid sts. Finish each side separately. Work 6 cm/2.4 in more for each side. Join top seam = mid back of the hood. Sew top seam.

Sew hood on the neck edge with neck band inside. Beg from right front.



□ = knit (knit on RS, purl on WS)

▣ = purl (purl on RS, knit on WS)

## Viking Alpaca Maya

### Scarf and hat

1308-7

Size:	Woman
Scarf: approx.	20 X 160cm
	7.9 X 63 in

**ALTERNATIVE YARN:** Viking Alpaca Maya ( 85% Superfine alpaca, 15% Highland wool ),Viking Mohair ( 78 % mohair, 13 % wool, 9% nylon ),Viking Alpaca Superfine (100% alpaca superfine) 50 g ball. Viking Balder (100% wool, superwash) 100 g skein. Viking Naturgarn (100% wool ) 50 g ball.

Violet, 769 :

3 balls

Circular needles 80 and 40 cm/31.5 and 15.7 in, size 7 mm – US 10½ or 11 – UK/Canadian 2

**Gauge:** 12 sts = approx. 10 cm/4 in over St st using needles size 7 mm. **Check your gauge to ensure success.**

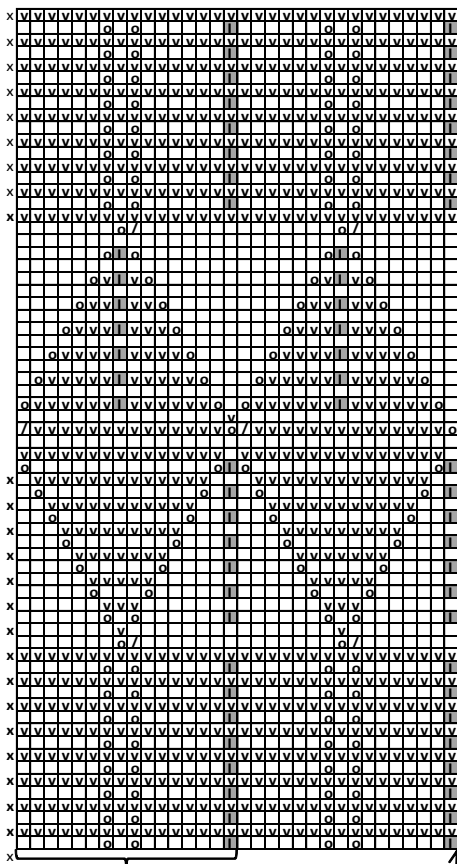
### SCARF

Using needles size 7 mm, cast on 192 sts. Work in rnds in patt I. Bind off.

### HAT

Using needles size 7 mm, cast on 64 sts. Work in patt I. When work measures approx. 20 cm/7.9 in, beg crown dec: Knit all sts tog in pairs. Purl 1 rnd. Rep dec every 2<sup>nd</sup> rnd until 8 sts rem. Break yarn, thread through rem sts, tighten yarn slightly, and weave in on WS.

Pattern I



- = Knit
- = Purl
- = K2tog
- = 1 yo
- = Sl 1 st, K2tog, pssso
- x = Last st of the rnd is part of the beg of next rnd

Beg here

# Viking Alpaca Maya

## Cowl and hat

1308-8

<b>Size:</b>	<b>Woman</b>
Width:	70 cm
	27.6 in
Length:	30 cm
	11.8 in

**ALTERNATIVE YARN:** Viking Alpaca Maya ( 85% Superfine alpaca, 15% Highland wool ), Viking Mohair ( 78 % mohair, 13 % wool, 9% nylon ), Viking Alpaca Superfine (100% alpaca superfine) 50 g ball. Viking Balder (100% wool, superwash) 100 g skein. Viking Naturgarn (100% wool ) 50 g ball.

Green, 730 : 2 balls

Circular needles size 80 and 40 cm/31.5 and 15.7 in, size 7 mm – US 10½ or 11 – UK/Canadian 2

**Gauge:** 12 sts = approx. 10 cm/4 in using needles size 7 mm. **Check your gauge to ensure success.**

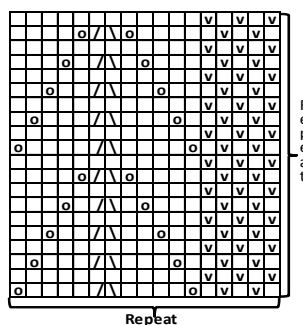
### COWL

Using needles size 7 mm, cast on 84 sts. Work 6 rnds in Seed st. Cont working in patt I as charted, **but** inc 1 st on 1<sup>st</sup> rnd = 85 sts. When work measures approx. 28 cm/11 in, dec 1 st. Work 5 rnds in Seed st over all sts. Bind off in Seed st.

### HAT

Using needles size 7 mm, cast on 68 sts. Work 6 rnds I Seed st. Cont working in patt I. When work measures approx. 20 cm/7.9 in, beg dec for crown: \*Work Seed st over 15 sts, K2tog\*, rep \*- \* across the rnd. Rep dec every 2<sup>nd</sup> rnd with 1 st less between dec (Note! K2tog always at the same place, forming a knit-st stripe). When 48 sts rem on a rnd, knit all sts tog in pairs. Knit 1 rnd. Rep dec every 2<sup>nd</sup> rnd until 6 sts rem. Break yarn, thread through rem sts, tighten the yarn, and weave in on WS.

Pattern I



- = knit on RS, purl on WS
- = purl on RS, knit on WS
- = 1 yo
- = Sl 1 st, K1, pssso
- = K2tog

# Viking Alpaca Maya

## Sweater with short sleeves

1308-9

<b>Size:</b>	<b>S - M - L - XL</b>
<b>Bust:</b> approx.	93 - 100 - 107 - 117 cm
	36.6 - 39.4 - 42.2 - 46.2 in
<b>Length:</b> approx.	58 - 58 - 58 - 58 cm
	22.8 - 22.8 - 22.8 - 22.8 in
<b>Sleeve length:</b> approx.	16 - 18 - 20 - 20 cm
	6.3 - 7.3 - 7.9 - 7.9 in

**ALTERNATIVE YARN:** Viking Alpaca Maya ( 85% Superfine alpaca, 15% Highland wool ), Viking Mohair ( 78 % mohair, 13 % wool, 9% nylon ), Viking Alpaca Superfine (100% alpaca superfine) 50 g ball. Viking Balder (100% wool, superwash) 100 g skein. Viking Naturgarn (100% wool ) 50 g ball.

Grey, 715	2	2	3	3 balls
Light Grey, 713	1	1	2	2 balls
Off-White, 702	1	1	2	2 balls

Circular needle and double pointed needles size 6 and 7 mm – US 10 and 10½ or 11 – UK/Canadian 4 and 2

**Gauge:** 12 sts = approx. 10 cm/4 in over St st using needles size 7 mm. **Check your gauge to ensure success.**

### Body

Using needles size 7 mm and grey yarn, cast on 112-120-128-140 sts. Work in rnds approx. 4 cm/1.6 in K2,P2 rib. Place markers each side, 56-60-64-70 sts for both back and front. Cont working in rnds in St st until work measures approx. 18-18-18-18 cm/7.1-7.1-7.1-7.1 in. Work in patt as charted (clr number 2 is now light grey). When patt is ready, cont working with light grey yarn. When work measures approx. 30-30-30-30 cm/11.8-11.8-11.8-11.8 in, divide work at sides. Finish back and front separately.

### Back

Cont working until work measures approx. 36-36-36-36 cm/14.2-14.2-14.2-14.2 in. Work in patt as charted (clr number 2 is now white). When patt is ready, cont working back and forth in St st with white yarn until work measures approx. 58-58-58-58 cm/22.8-22.8-22.8-22.8 in. Bind off.

### Front

Work same as for back. When work measures approx. 50-50-50-50 cm/19.7-19.7-19.7-19.7 in, bind off mid 12-14-14-16 sts. Finish each side separately. Bind off at neck edge every 2<sup>nd</sup> row 1x3 sts, 1x2 sts, and 1x1 st. When front measures same as back, bind off. Work same for the other side, rev all shaping.

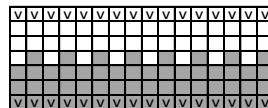
### Sleeves

Using needles size 7 mm and grey yarn, cast on 68 sts. Work in rnds approx. 4 cm/1.6 in in K2,P2 rib. Cont working in rnds in St st until sleeve measures approx. 16-18-20-20 cm/6.3-7.1-7.9-7.9 in. Bind off.

### Finishing

Join shoulder seams.

**Neck band:** Using needles size 6 mm and grey yarn, pick or knit up approx. 60-64-64-68 sts along neck edge. (Note! Do not pick up too many sts, so that the neck band doesn't turn out too loose) Work 2 rnds in K2,P2 rib. Bind off in rib.



- = knit with clr 2 (knit on RS, purl on WS)
- ▣ = vrangt med farge 2 (vr på retten, r på vrangen)
- ▤ = purl with clr 1 (purl on RS, knit on WS)
- ▥ = knit with clr 1 (knit on RS, purl on WS)

# Viking Alpaca Maya

## Sweater

1308-10

<b>Size:</b>	<b>S - M/L - XL/XXL</b>
<b>Bust:</b>	110 120 130 cm
	43.3 47.2 51.2 in
<b>Length:</b>	68 71 74 cm
	26.8 28 29.1 in
<b>Sleeve length:</b>	46 48 48 cm
	18.1 18.9 18.9 in

**ALTERNATIVE YARN:** Viking Alpaca Maya ( 85% Superfine alpaca, 15% Highland wool ), Viking Mohair ( 78 % mohair, 13 % wool, 9% nylon ), Viking Alpaca Superfine ( 100% alpaca superfine) 50 g ball. Viking Balder ( 100% wool, superwash) 100 g skein. Viking Naturgarn ( 100% wool ) 50 g ball.

Black, 703 :	4 - 4 - 4 balls
Dark Grey, 715 :	4 - 4 - 4 balls
Light Grey, 713 :	3 - 3 - 3 balls

Circular needles 80 and 40 cm/31.5 and 15.7 in, size 7 mm – US 10½ or 11 – UK/Canadian 2

**Gauge:** 12 sts = approx. 10 cm/4 in over St st with needles size 7 mm. **Check your gauge to ensure success.**

### BACK

Using needles size 7 mm and black yarn, cast on 66 – 72 – 78 sts. Work back and forth 4 cm/1.6 in in K2,P2 rib. Change to dark grey yarn, and cont working in Garter st. Always knit first st. When work measures approx. 43 – 44 – 46 cm/16.9-17.3-18.1 in, bind off 4 sts at each edge. Bind off 1 st beg of each row for raglan. Cont working until 16 – 18 – 18 sts rem. Bind off.

### FRONT

Work same as for back.

### SLEEVES

Using needles size 7 mm and black yarn, cast on 34 – 34 – 38 sts. Work back and forth 4 cm/1.6 in in K2,P2 rib. Change to light grey yarn, and cont working in Garter st. Inc 1 st at each edge approx. every 3 ½ – 3 – 3 cm/1.4-1.2-1.2 in. Rep inc until there is 60 – 62 – 68 sts on a row, and sleeve measures approx. 46 – 48 – 48 cm/18.1-18.9-18.9 in. Bind off 4 sts at each edge. Change to black yarn, and bind off 1 st beg of each row for raglan. Cont working until 10 – 8 – 8 sts rem. Bind off.

Work same for the other sleeve.

### FINISHING

Sew side seams with dark grey yarn. Sew raglan seams, and sleeve seams.

### NECK BAND

Pick or knit up with light grey yarn 52 – 52 – 52 sts. Work approx. 12 cm/4.7 in in K2,P2 rib. Bind off in rib.

# Viking Alpaca Maya

## Scarf and hat

1308-11

<b>Size, hat:</b>	S – M – L
<b>Circumference :</b>	50 – 53 – 57 cm
	19.7-20.9-22.4 in
<b>Size, scarf :</b>	25X180 cm
	9.8 X 70.9 in

**ALTERNATIVE YARN:** Viking Alpaca Maya ( 85% Superfine alpaca, 15% Highland wool ),Viking Mohair ( 78 % mohair, 13 % wool, 9% nylon ),Viking Alpaca Superfine ( 100% alpaca superfine) 50 g ball. Viking Balder ( 100% wool, superwash) 100 g skein. Viking Naturgarn ( 100% wool ) 50 g ball.

Black, 703 : 3 - 3 - 3 balls

Circular needle size 7 mm – US 10½ or 11 – UK/Canadian 2

**Gauge:** 12 sts = approx. 10 cm/4 in over St st using needles size 7 mm. **Check your gauge to ensure success.**

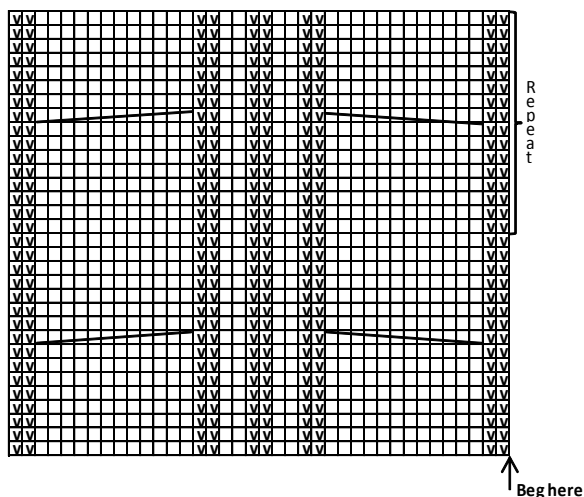
### SCARF

Using needles size 7 mm, cast on 54 sts. Work as foll : K2,P2 rib over 8 sts, patt A over 38 sts, and K2,P2 rib over 8 sts. Work back and forth as established until scarf measures approx.180 cm/70.9 in. Bind off, knit-sts knitwise, and purl-sts purlwise.

### HAT

Using needles size 7 mm, cast on 60 – 64 – 68 sts. Work in rnds approx. 26 cm/10.2 in in K2,P2 rib. Beg dec for crown: Knit all sts tog in pairs. Knit 1 rnd. Rep dec every 2<sup>nd</sup> rnd until 8 – 8 – 9 sts rem on rnd. Break yarn, thread through rem sts, tighten the yarn slightly, and weave in on WS.

Pattern A



- = Knit on RS, purl on WS
- = Purl on RS, knit on WS
- = Slip 6 sts on cn and hold to front, K6, knit sts from cn
- = Slip 6 sts on cn and hold to back, K6, knit sts from cn

# Viking Alpaca Maya

## Round scarf and hat

1308-12

<b>Size:</b>	160 X 30 cm
	63 X 11.8 in

**ALTERNATIVE YARN:** Viking Alpaca Maya ( 85% Superfine alpaca, 15% Highland wool ),Viking Mohair ( 78 % mohair, 13 % wool, 9% nylon ),Viking Alpaca Superfine ( 100% alpaca superfine) 50 g ball. Viking Balder ( 100% wool, superwash) 100 g skein. Viking Naturgarn ( 100% wool ) 50 g ball.

Light Grey, 713 : 3 balls

Circular needles 80 and 40 cm/31.5 and 15.7 in, size 7 mm – US 10½ or 11 – UK/Canadian 2

**Gauge:** 12 sts = approx. 10 cm/4 in over St st using needles size 7 mm. **Check your gauge to ensure success.**

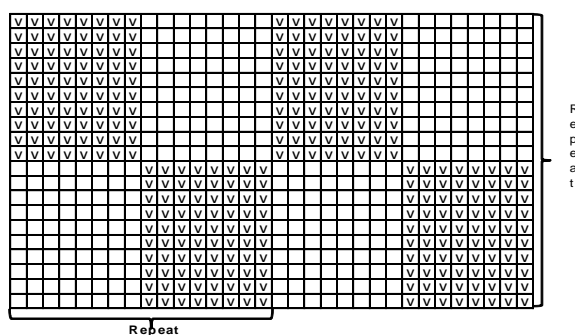
### SCARF:

Using needles size 7 mm, cast on 192 sts. Work in rnds approx. 2 cm/0.8 in in K2,P2 rib. Cont working in patt I until work measures approx. 26 cm/10.2 in (end with a complete square). Work approx. 2 cm/0.8 in in K2,P2 rib. Bind off in rib.

### HAT

Using needles size 7 mm, cast on 64 sts. Work in rnds approx. 8 cm/3.1 in in K2,P2 rib. Work 1 rnd in St st, and inc evenly across number of sts to be 80 sts. Work in patt I until work measures approx. 26 cm/10.2 in. Cont working in St st, and beg dec for crown: Knit all sts tog in pairs. Knit 1 rnd. Rep dec until 10 sts rem on a rnd. Break yarn, thread through rem sts, tighten the yarn slightly, and weave in on WS.

Pattern I



- = knit on RS, purl on WS
- = purl on RS, knit on WS

# Viking Alpaca Maya

## Cowl and hat

1308-13

<b>Size, hat:</b>	S – M – L
<b>Circumference:</b>	50 – 53 – 57 cm
	19.7-20.9-22.4 in
<b>Size, cowl:</b>	25X70 cm
	9.8X27.6 in

**ALTERNATIVE YARN:** Viking Alpaca Maya ( 85% Superfine alpaca, 15% Highland wool ),Viking Mohair ( 78 % mohair, 13 % wool, 9% nylon ),Viking Alpaca Superfine ( 100% alpaca superfine) 50 g ball. Viking Balder ( 100% wool, superwash) 100 g skein. Viking Naturgarn ( 100% wool ) 50 g ball

Light Grey, 713 : 1 - 1 - 1 ball  
 Black, 703 : 1 - 1 - 1 ball

Circular needles 60 and 40 cm/23.6 and 15.7 in, size 7 mm – US 10½ or 11 – U/Canadian 2

**Gauge:** 12 sts = approx. 10 cm/4 in over St st using needles size 7 mm. **Check your gauge to ensure success.**

### COWL

Using needles size 7 mm and black yarn, cast on 84 sts. Work in rnds approx. 3 cm/1.2 in in K2,P2 rib. Change to light grey yarn, and cont working in St st until necklet measures approx. 22 cm/8.7 in. Change to black yarn. Work 1 rnd in St st. Cont working in K2,P2 rib until necklet measures approx. 25 cm/9.8 in. Bind off in rib.

### HAT

Using needles size 7 mm and black yarn, cast on 60 – 64 – 68 sts. Work in rnds approx. 3 cm/1.2 in in K2,P2 rib. Change to light grey yarn, and cont working in St st until hat measures approx. 18 – 20 – 22 cm/7.1-7.9-8.7 in. Beg dec for crown: Knit all sts tog in pairs. Work 1 rnd in St st. Rep dec until 15 – 16 – 17 sts rem on a rnd. Break yarn, thread through rem sts, tighten the yarn slightly, and weave in on WS.

Using black yarn, make a large pom-pom

## Viking Alpaca Maya

### Scarf and hat

1308-14

#### Size:

#### Woman

Length, scarf : 30X180 cm  
11.8 X 70.9 in

**ALTERNATIVE YARN:** Viking Alpaca Maya ( 85% Superfine alpaca, 15% Highland wool ),Viking Mohair ( 78 % mohair, 13 % wool, 9% nylon ),Viking Alpaca Superfine ( 100% alpaca superfine) 50 g ball. Viking Balder ( 100% wool, superwash) 100 g skein. Viking Naturgarn ( 100% wool ) 50 g ball.

Pink, 766 : 3 ball

Circular needle 40 cm/15.7 in, size 7 mm – US 10½ or 11 – UK/Canadian 2

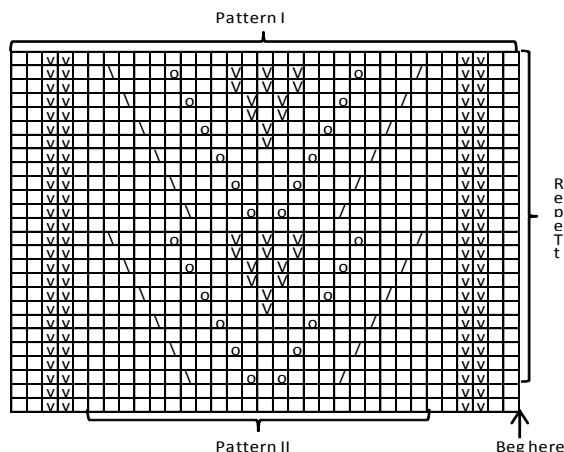
**Gauge:** 12 sts = approx. 10 cm/4 in over St st using needles size 7 mm. **Check your gauge to ensure success.**

### SCARF

Using needles size 7 mm, cast on 33 sts. Work in patt I until scarf measures approx.180 cm/70.9 in. End with a complete patt, and work 2 first rows of the patt. Bind off, knit-sts knitwise, purl-sts purlwise.

### HAT

Using needles size 7 mm, cast on 64 sts. Work in rnds approx. 6 cm/2.4 in in K2,P2 rib. Work 1 rnd in St st, and inc evenly across number of sts to be 66 sts. Cont working in patt II until work measures approx. 24 cm/9.4 in. Beg dec for crown: Knit all sts tog in pairs. Knit 1 rnd. Rep dec until 8 sts rem on a rnd. Break yarn, thread through rem sts, tighten the yarn slightly, and weave in on WS.



- = Knit
- ◻ = 1 vo
- ▤ = Sl 1 st. 1. pssso
- ▥ = K2tog
- ▦ = Purl

## Viking Alpaca Maya

### Necklet and hat

1308-15

#### Size:

Child

**ALTERNATIVE YARN:** Viking Alpaca Maya ( 85% Superfine alpaca, 15% Highland wool ),Viking Mohair ( 78 % mohair, 13 % wool, 9% nylon ),Viking Alpaca Superfine ( 100% alpaca superfine) 50 g ball. Viking Balder ( 100% wool, superwash) 100 g skein. Viking Naturgarn ( 100% wool ) 50 g ball

Off-White, 702 : 1 ball  
 Light Grey, 713 : 1 ball

Circular needles 60 and 40 cm/23.6 and 15.7 in, size 7 mm – US 10½ or 11 – UK/Canadian 2

**Gauge:** 12 sts = approx. 10 cm/4 in over St st using needles size 7 mm. **Check your gauge to ensure success.**

### NECKLET

Using needles size 7 mm and white yarn, cast on 44 sts. Work back and forth approx. 8 cm/3.1 in in K4,P4 rib. Leave work aside, and knit another similar piece (= front and back ). Beg with back. Work in St st with white yarn over 44 sts (pm), cast on 24 sts (pm), work in St st over next 44 sts (pm), and cast on 4 sts (pm) = 136 sts.

Work in rnds in patt A over all sts, **and** dec for raglan at all 4 markers: Work until 2 sts rem before a marker, sl 1 st, K1, pssso, K2tog. Rep dec at each 4 markers every 2<sup>nd</sup> rnd until 56 sts rem on a rnd. Work in rnds in K4,P4 rib until collar measures approx. 14 cm/5.5 in. Bind off in rib.

### HAT

Using needles size 7 mm and white yarn, cast on 56 sts. Work in rnds approx. 6 cm/2.4 in in K4,P4 rib. Cont working in patt A until hat measures approx.16 cm/6.3 in. Beg dec for crown: Divide hat into 4 pieces, 14 sts for each piece. Cont working in patt A, **and** dec same as for raglan at each 4 markers until 8 sts rem on a rnd.

Break yarn, thread through rem sts, tighten yarn slightly, and weave in on WS.

# Viking Alpaca Maya

## Vest

1308-17

<b>Size:</b>	2/4 – 6/8 – 10/12 – 14 yrs
<b>Chest :</b>	64 – 74 – 84 – 90 cm 25.2-29.1 -33.1 - 35.4 in
<b>Length:</b>	40 – 47– 58 – 62 cm 15.7 -18.5 -22.8 - 24.4 in
<b>Sleeve length:</b>	10 – 10 – 10 – 10 cm 4 - 4 - 4 - 4 in

**ALTERNATIVE YARN:** Viking Alpaca Maya ( 85% Superfine alpaca, 15% Highland wool ),Viking Mohair ( 78 % mohair, 13 % wool, 9% nylon ),Viking Alpaca Superfine (100% alpaca superfine) 50 g ball. Viking Balder (100% wool, superwash) 100 g skein. Viking Naturgarn (100% wool ) 50 g ball.

White, 700 : 2 2 3 4 balls

Circular needles 80 and 40 cm/31.5 and 15.7 in, size 7 mm – US 10½ and 11 – UK/Canadian 2

**Gauge:** 12 sts = approx. 10 cm/4 in over St st using needles size 7 mm. **Check your gauge to ensure success.**

**Vest is worked sideways.**

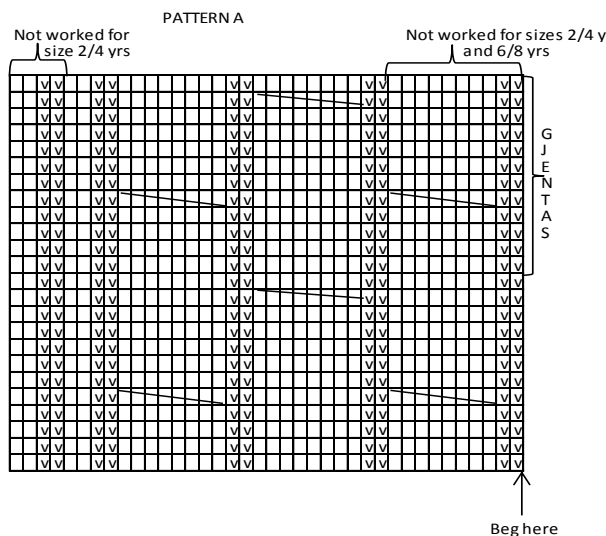
Using needles size 7 mm, cast on 48 – 54 – 70 – 74 sts. Work as foll: K2,P2 rib over 4 – 4 – 8 – 8 sts, St st over 20 – 22 – 24 – 28 sts, and patt A over 24 – 28 – 38 – 38 sts. When work measures approx. 32 – 37 – 42 – 45 cm/12.6-14.6-16.5-17.7 in, bind off 18 – 20 – 22 – 24 sts for armhole, and cast on same amount of sts on next row. Cont working same as before until work measures approx. 64 – 74 – 84 – 90 cm/25.2-29.1-33.1-35.4 in. Bind off 18 – 20 – 22 – 24 sts for armhole, and join rem sts tog with cast-on edge.

**Armhole edges:** Using needles size 7 mm, pick up 36-40-44-48 sts. Work in rnds approx. 5 – 5 – 6 – 6 cm/2-2-2.4-2.4 in in K2,P2 rib. Bind off in rib.

Work same for the other armhole edge.

**Lower edge:** Using needles size 7 mm, pick up 76 – 88 – 100 – 108 sts. Work approx. 4 cm/1.6 in in K2,P2 rib. Bind off in rib.

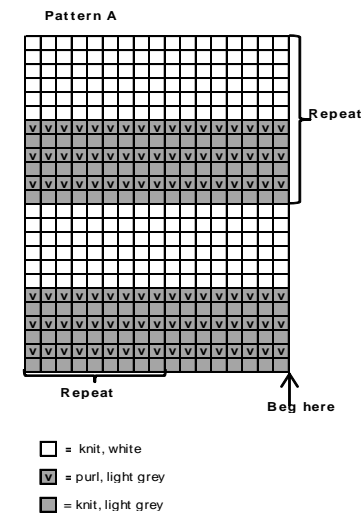
**Finishing :** Sew shoulder seams, 8 – 10 – 12 – 13 cm/3.1-4-4.7-5.1 in for each shoulder.



☐ = Knit on RS, purl on WS

☒ = Purl on RS, knit on WS

☐☐☐☐ = Slip 4 sts on cn and hold to front, K4, knit sts from cn



☐ = knit, white  
☒ = purl, light grey  
☐ = knit, light grey

# Viking Alpaca Maya

## Scarf and hat

1308-16

<b>Size :</b>	2/4 – 6/12 yrs
<b>Scarf:</b>	20 X 160cm 7.9 X 63 in

**ALTERNATIVE YARN:** Viking Alpaca Maya ( 85% Superfine alpaca, 15% Highland wool ),Viking Mohair ( 78 % mohair, 13 % wool, 9% nylon ),Viking Alpaca Superfine ( 100% alpaca superfine) 50 g ball. Viking Balder ( 100% wool, superwash) 100 g skein. Viking Naturgarn ( 100% wool ) 50 g ball.

Dark Pink, 760 : 1 - 1 ball  
White, 700 : 1 - 1 ball  
Pink, 766 : 1 - 1 ball

Circular needles 80 and 40 cm/31.5 and 15.7 in, size 7 mm – US 10½ or 11 – UK/Canadian 2

**Gauge:** 12 sts = approx. 10 cm/4 in over St st using needles size 7 mm. **Check your gauge to ensure success.**

### SCARF

Using needles size 7 mm and dark pink yarn, cast on 192 sts. Work in rnds in K4,P4 rib. When work measures approx. 8 cm/3.1 in, change to white yarn, and cont working in K4,P4 rib. When work measures approx. 16 cm/6.3 in, change to pink yarn. Work until scarf measures approx. 24 cm/9.4 in. Bind off in rib.

### HAT

Using needles size 7 mm and dark pink yarn, cast on 64 sts. Work in rnds in K4,P4 rib. When work measures approx. 7 cm/2.8 in, change to white yarn, and cont working in K4,P4 rib. When work measures approx. 14 cm/5.5 in, change to pink yarn, and work until hat measures approx. 20 cm/7.9 in. Beg dec for crown: Knit all sts tog in pairs. Knit 1 rnd. Rep dec every 2<sup>nd</sup> rnd until 8 sts rem. Break yarn, thread through rem sts, tighten yarn slightly, and weave in on WS. Using dark pink yarn, make a large pom-pom and fasten it on top



# Viking Alpaca Maya

## Bolero

1308-18

**Size:** 4/6 – 8/10 – 12/14 yrs  
**Width (from sleeve to sleeve):** 100 – 116 – 132 cm  
 39.4 – 45.7 – 52 in

**ALTERNATIVE YARN:** Viking Alpaca Maya ( 85% Superfine alpaca, 15% Highland wool ), Viking Mohair ( 78 % mohair, 13 % wool, 9% nylon ), Viking Alpaca Superfine (100% alpaca superfine) 50 g ball. Viking Balder (100% wool, superwash) 100 g skein. Viking Naturgarn (100% wool ) 50 g ball.

Dark Pink, 760 : 3 – 3 – 4 balls

Circular needle and double pointed needles size 7mm – US 10½ or 11 – UK/Canadian 2

**Gauge:** 12 sts = approx. 10 cm/4 in over St st using needles size 7 mm. **Check your gauge to ensure success.**

**Patt A :** \*2 rows in Garter st. Next row: K1, 2 yo, rep across the row. Knit 1 row, **let down all yo's\***. Rep \*-\*.

Beg from left sleeve. Using needles size 7 mm, cast on 36 – 40 – 44 sts. Work in rnds approx. 10 – 10 – 12 cm/4-4-4.7 in in K2,P2 rib. Cont working back and forth. Work 2 rows in Garter st, and inc 1 st beg and end of 1<sup>st</sup> row. Cont working in patt A, and inc 1 st inside 1 selvage st beg and end of next row. Rep inc at each edge approx. every 10-6-5 cm/4-2.4-2 in until there is 46 – 56 – 64 sts on a row, and work measures approx. 41 – 48 – 56 cm/16.1-18.9-22 in (end with complete patt A report). Divide work for neck edge, 23 – 28 – 32 sts for both sides. Finish first right side. Cont working back and forth and inc 1 st inside 1 selvage st beg of every 1<sup>st</sup> row of patt A, altog. 3 – 4 – 4 times (neck edge measures approx. 9 – 10 – 10 cm/3.5-4-4 in). There is now 26 – 32 – 36 sts on a row. Cont working back and forth, and **dec** 1 st inside 1 selvage st beg of every 1<sup>st</sup> row of patt A, altog. 3 – 4 – 4 times. There is now 23 – 28 – 32 sts on a row. Slip sts on holder, and work same for the other side, rev all shaping. Take all sts on same needle, and cont working back and forth over all sts. Work in patt A same as before, but dec 1 st inside 1 selvage st beg and end of row approx. every 10-6-5 cm/4-2.4-2 in until 40-44-48 sts rem on a row, and work measures approx. 31 – 38 – 44 cm/ 12.2-15-17.3in (measured from neck edge). End with a complete patt A, **but** dec 1 st inside 1 selvage st beg and end of **last** row. Work 2 rows in Garter st, and dec 1 st beg and end of the row. There is now 36 – 40 – 44 sts on a row. Cont working in rnds approx. 10-12-12 cm/4-4.7-4.7 in in K2,P2 rib. Bind off in rib.

# Viking Alpaca Maya

## Scarf and hat in Garter stitch 1308-19

**Size:** 2/4 – 6/10 yrs  
**Circumference:** 47 – 50 cm  
 18.5-19.7 in  
**Scarf:** 20 X 160 cm  
 7.9 X 63 in

**ALTERNATIVE YARN:** Viking Alpaca Maya ( 85% Superfine alpaca, 15% Highland wool ), Viking Mohair ( 78 % mohair, 13 % wool, 9% nylon ), Viking Alpaca Superfine (100% alpaca superfine) 50 g ball. Viking Balder (100% wool, superwash) 100 g skein. Viking Naturgarn (100% wool ) 50 g ball

Turquoise, 768 :

2 2 balls

Circular needle size 7 mm – US 10½ or 11 – UK/Canadian 2  
**Gauge:** 12 sts = approx. 10 cm/4 in over St st using needles size 7 mm. **Check your gauge to ensure success.**

### SCARF

Using needles size 7 mm, cast on 24 sts. Work 6 cm/2.4 in in K2,P2 rib. Cont working back and forth in Garter st until work measures approx. 154 cm/60.7 in. Work in K2,P2 rib until scarf measures approx. 160 cm/63 in. Bind off in rib.

### HAT

Using needles size 7 mm, cast on 56 – 60 sts. Work in rnds 6 cm/2.4 in in K2,P2 rib. Cont working in Garter st. When hat measures approx. 21 – 23 cm/8.3-9.1 in, dec for crown: Knit all sts tog in pairs. Knit 1 rnd. Rep dec every 2<sup>nd</sup> rnd until 7 – 8 sts rem. Break yarn, thread through rem sts, tighten the yarn slightly, and weave in on WS.

# Viking Alpaca Maya

## Necklet and hat

1308-20

**Size:** Child

**ALTERNATIVE YARN:** Viking Alpaca Maya ( 85% Superfine alpaca, 15% Highland wool ), Viking Mohair ( 78 % mohair, 13 % wool, 9% nylon ), Viking Alpaca Superfine (100% alpaca superfine) 50 g ball. Viking Balder (100% wool, superwash) 100 g skein. Viking Naturgarn (100% wool ) 50 g ball

Red, 750 :

1 ball

Circular needles 7 mm – US 10½ or 11 – UK/Canadian 2  
**Gauge:** 12 sts = approx. 10 cm/4 in over St st using needles size 7 mm. **Check your gauge to ensure success.**

### NECKLET

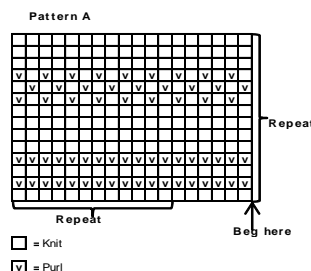
Using needles size 7mm, cast on 26 sts. Work back and forth approx. 8 cm/3.1 in in K2,P2 rib.

Leave work aside, and work same for another similar piece. Knit both pieces in on same circular needle. Work 1 rnd in St st, and cast on 4 sts between the pieces on both sides = shoulders. There is now 60 sts on a rnd. Beg from back and left shoulder, and cont working in rnds in patt A until work measures approx. 24 cm/9.4 in (end with 4 rnds in Garter st).

Work in rnds approx. 3 cm/1.2 in in K2,P2 rib. Bind off in rib.

### HEADBAND

Using needles size 7 mm, cast on 56 sts. Work in rnds approx. 2 cm/0.8 in in K2,P2 rib. Work patt I once, and after that 4 rnds in Garter st. End with 2 cm/0.8 in in K2,P2 rib. Bind off in rib.



# Viking Alpaca Maya

## Sweater

1308-21

<b>Size:</b>	2/4 – 6 – 8/10 – 12/14 yrs
<b>Chest:</b>	63 – 70 – 77 – 90 cm 24.8-27.6-30.3-35.4 in
<b>Length:</b>	38 – 45 – 52 – 60 cm 15 – 17.7 – 20.5 – 23.6 in
<b>Sleeve length:</b>	30 – 34 – 40 – 47 cm 11.8-13.4-15.7-18.5 in

**ALTERNATIVE YARN:** Viking Alpaca Maya ( 85% Superfine alpaca, 15% Highland wool ),Viking Mohair ( 78 % mohair, 13 % wool, 9% nylon ),Viking Alpaca Superfine (100% alpaca superfine) 50 g ball. Viking Balder (100% wool, superwash) 100 g skein. Viking Naturgarn (100% wool ) 50 g ball

Light Blue, 767 : 2 – 2 – 3 – 4 balls

Circular needle size 7 mm – US 10½ or 11 – UK/Canadian 2  
**Gauge:** 12 sts = approx. 10 cm/4 in over St st using needles size 7mm. **Check your gauge to ensure success.**

Using needles size 7 mm, cast on 70 – 76 – 84 – 100 sts. Work in rnds approx. 4 cm/1.6 in in K1,P1 rib. Work in St st, and inc evenly across 1<sup>st</sup> rnd number of sts to be 78 – 84 – 92 – 108 sts. Place markers each side, 39 – 42 – 46 – 54 sts for both back and front. When work measures approx. 22 – 28 – 34 – 40 cm/8.7-11-13.4—15.7 in, bind off 4 sts at each side (2 sts both sides of the markers). Leave work aside.

**Sleeves:** Using needles size 7 mm, cast on 20 – 22 – 24 – 26 sts. Work in rnds approx. 4 – 4 – 5 – 5 cm/1.6-1.6-2-2 in in K1,P1 rib. Place a marker beg of rnd ( = inner seam of the sleeve). Work in St st. Inc 1 st both sides of the marker approx. every 5 – 6 – 7 – 7 cm/2-2.4-2.8-2.8 in until there is 30 – 32 – 34 – 38 sts on a rnd, and sleeve measures approx. 30 – 34 – 40 – 47 cm/11.8-13.4-15.7-18.5 in. Bind off 4 sts mid under sleeve (2 sts both sides of the marker). Leave work aside, and knit the other sleeve.

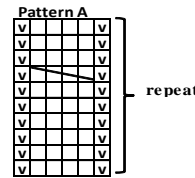
**Yoke:** Take all pieces on same circular needle size 7 mm = 122-132-144-168 sts on a rnd.

Work 1 rnd in St st over all sts, and adjust evenly across number of sts to be 120-130-140-170 sts.

Beg from back, from left shoulder, and work as foll: \*Patt A over 6 sts, St st over 4 sts\*, rep \*-\* across the rnd. Cont working as established, **and** dec for yoke: After 3 – 4 – 5 – 6 rnds dec as foll: \*K8, K2tog\*, rep \*-\* across the rnd. Rep dec with 1 st less between dec every 3<sup>rd</sup> – 4<sup>th</sup> – 5<sup>th</sup> – 6<sup>th</sup> rnd altog. 2 times, every 4<sup>th</sup> rnd altog. 0 – 1 – 1 – 1 times, and every 3<sup>rd</sup> rnd 1 time. All St sts between patt A are now decreased. Dec now every 2<sup>nd</sup> rnd as foll: \*Knit 2 first sts of patt A tog\*, rep \*-\* across the rnd. Next dec: \*Sl last st of patt A, K1, psso\*, rep \*-\* across the rnd. All purl-sts are now decreased, and 52 – 56 – 60 – 68 sts rem on a rnd.

Knit 1 rnd. Next rnd: Dec evenly across the rnd number of sts to be 42 – 44 – 46 – 48 sts. Work in rnds approx. 6 – 7 – 7 8 cm/2.4-2.8-2.8-3.1 in in K1,P1 rib. Bind off in rib.

**Finishing :** Sew underarm seams. Fold neck edge in double, and sew on WS.



□ = Knit on RS, purl on WS

◻ = Purl on RS, knit on WS

◻◻ = Slip 2 sts on cn and hold to front, K2, knit sts from cn

# Viking Alpaca Maya

## Scarf and hat

1308-22

<b>Size, hat:</b>	2/4 – 6/10 yrs
<b>Circumference:</b>	46 – 50 cm 18.1-19.7 in
<b>Scarf:</b>	16 X 150 – 20 X 160cm 6.3X 59.1 – 7.9 X 63 in

**ALTERNATIVE YARN:** Viking Alpaca Maya ( 85% Superfine alpaca, 15% Highland wool ),Viking Mohair ( 78 % mohair, 13 % wool, 9% nylon ),Viking Alpaca Superfine (100% alpaca superfine) 50 g ball. Viking Balder (100% wool, superwash) 100 g skein. Viking Naturgarn (100% wool ) 50 g ball

Light Blue, 767 : 3 – 3 balls

Circular needles 80 and 40 cm/31.5 and 15.7 in, size 7 mm – US 10½ or 11 – UK/Canadian 2

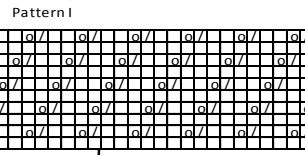
**Gauge:** 12 sts = approx. 10 cm/4 in over St st using needles size 7 mm. **Check your gauge to ensure success.**

### SCARF

Using needles size 7 mm, cast on 40 – 48 sts. Work in rnds as foll: \*12 cm/4.7 in in St st, patt I\*, rep \*-\* until scarf measures approx. 150 – 160 cm/59.1 - 63 in (end with 12 cm/4.7 in in St st). Bind off.

### HAT

Using needles size 7 mm, cast on 56 – 60 sts. Work in rnds approx. 3 cm/1.2 in in K1,P1 rib. Cont working in patt I as charted until work measures approx. 21 – 23 cm/8.3-9.1 in. Dec for crown: Knit all sts tog in pairs. Work 1 rnd in St st. Rep dec until 14 – 15 sts rem on a rnd. Break yarn, thread through rem sts, tighten the yarn slightly, and weave in on WS.



□ = nit

◻ = K2tog

◻ = 1 vo