

Viking Nordlys

Sweater

1306-1

Size:	S	M	L	XL	XXL
Bust: approx.	94	- 102	- 110	- 118	- 126 cm
	37	- 40.2	- 43.3	- 46.4	- 49.5 in
Length: approx.	66	- 68	- 68	- 70	- 70 cm
	26	- 26.8	- 26.8	- 27.6	- 27.6 in
Sleeve length: approx.	49	- 50	- 51	- 52	- 52 cm
	19.3	- 19.7	- 20.1	- 20.5	- 20.5 in

ALTERNATIVE YARN: Viking Nordlys (75% superwash wool, 25% nylon), 100g ball, Viking Baby ull (100% merino wool, superwash). Viking Alpaca Fine (85% Alpaka Superfine – 15% highland wool), Viking pure milk fiber (100% milk fiber), 50 g ball

Baby Ull, White, 300 6 - 6 - 7 - 7 - 8 balls
 Nordlys Multiclr, 967 3 - 4 - 4 - 5 - 5 balls

Circular needle and double pointed needles size 3 mm – US 2 or 3 – UK/Canadian 11

Gauge: 28 sts = approx. 10 cm/4 in over St st using needles size 3 mm. **Check your gauge to ensure success.**

Note! Sweater is worked in lace patt with stripes. Before starting, read through the instruction.

BACK

Using needles size 3 mm and white Baby Ull, cast on 134-145-156-167-178 sts. Work back and forth 4 rows in Garter st. Change to multiclr Nordlys, and cont working in patt as charted (knit first and last st every row = selvage st). When work measures the given length, or as desired, bind off.

FRONT

Work same as for back. When work measures approx. 58-59-59-60-60 cm/22.8-23.2-23.2-23.6-23.6 in, bind off 30-31-32-33-34 mid sts for neck edge. Finish each side separately (Note! Dec and yo always go together. If there isn't enough sts for both, work these sts in St st). Bind off at neck edge every 2nd row 1x5 sts, 1x3 sts, 1x2 sts, and 3x1 st. When front measures same as back, bind off.

Work same for the other side, rev all shaping.

SLEEVES

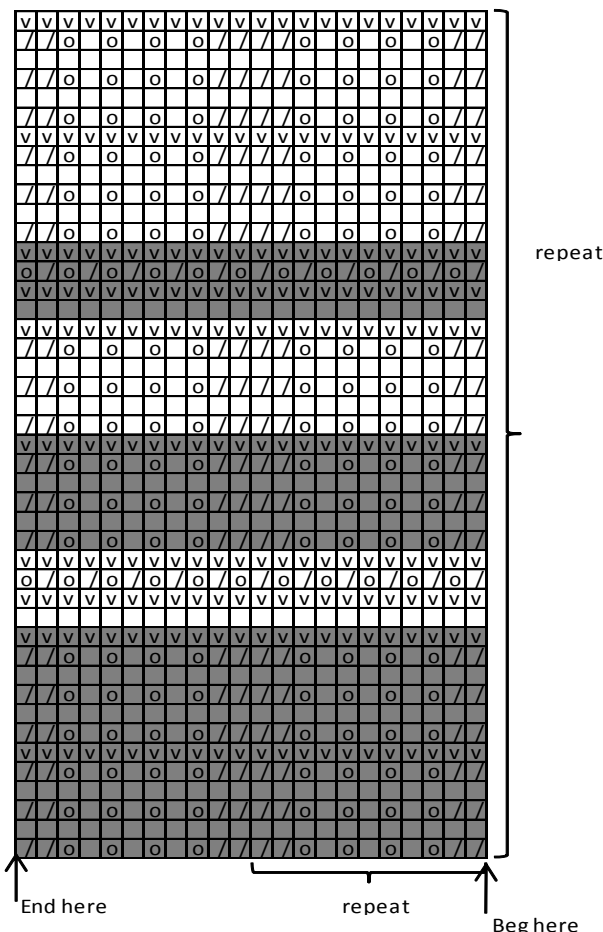
Using needles size 3 mm and white Baby Ull, cast on 66-66-77-77-77 sts. Work back and forth 4 rows in Garter st. Change to work multiclr, and cont working in patt same as for back and front. Inc 1 st at each edge approx. every 2 - 1 ½ - 2 - 2 - 1 ½ cm/0.8-0.6-0.8-0.8-0.6 in until there is altog. 114-120-125-125-133 sts on a row (inc sts are worked in patt). When work measures the given length, bind off. Work same for the other sleeve.

FINISHING

Sew side and shoulder seams.

Neck band: Using needles size 3 mm and Nordlys multiclr, knit or pick up approx. 138-143-146-150-150 sts around neck edge. Knit 1 rnd, and purl 1 rnd. Bind off knitwise. Weave in all ends on WS. Sew sleeve seams. Sew on sleeves.

LACE PATTERN



- = knit (knit on RS, purl o WS)
- = purl (purl on RS, knit on WS)
- = 1 yo
- = K2tog

STRIPES

- = white
- = multiclr

Viking Nordlys

Scarf and hat

1306-2

Size:	6/10 yrs		-
Woman			
Circumference: approx.	46	-	50 cm
	18.1	-	19.7 in
Scarf, length: approx..	150	-	180 cm
	59.1	-	70.9 in

ALTERNATIVE YARN: Viking Nordlys (75% superwash wool, 25% nylon), 100g ball, Viking Baby ull (100% merino wool, superwash). Viking Alpaca Fine (85% Alpaka Superfine – 15% highland wool), Viking pure milk fiber (100% milk fiber), 50 g ball

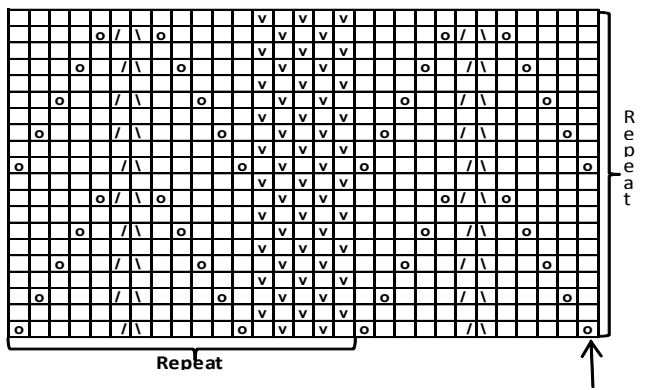
Woman

Nordlys multiclr, 957 2 - 2 balls

Circular needle and double pointed needles size 3 mm – US 2 or 3 – UK/Canadian 11

Gauge: 28 sts = approx. 10 cm/4 in over St st using needles size

Pattern I



- = knit on RS, purl on WS
- ▣ = purl on RS, knit on WS
- = 1 vo
- ◊ = sl 1 st, K1, pss0
- ◻ = K2tog

Beg here

Viking Nordlys

Cardigan

1306-5

Size:	S	M	L	XL	XXL
Bust: approx.	92	103	109	115	126 cm
	36.2	40.6	43.7	45.4	50.7 in
Length: approx.	65	65	66	66	66 cm
	25.6	25.6	26	26	26 in
Sleeve length: approx.	49	50	51	52	52 cm
	19.3	19.7	20.1	20.5	20.5 in

ALTERNATIVE YARN: Viking Nordlys (75% superwash wool, 25% nylon), 100g ball, Viking Baby ull (100% merino wool, superwash). Viking Alpaca Fine (85% Alpaka Superfine – 15% highland wool), Viking pure milk fiber (100% milk fiber), 50 g ball

Multiclr, 967 5 - 5 - 6 - 6 - 7 balls

Circular needle and double pointed needles size 3 mm – US 2 or 3 – UK/Canadian 11
+ 7 buttons

Gauge: 28 sts = approx. 10 cm/4 in over St st using needles size 3 mm. **Check your gauge to ensure success.**

BACK

Using needles size 3 mm, cast on 131-147-155-163-179 sts. Work back and forth 8 rows in Garter st. Cont as foll: 1 selvage st (= knit every row), patt as charted, ending with 1 selvage st. Work as established until back measures approx. 65-65-66-66-66 cm/25.6-25.6-26-26-26 in. Bind off.

RIGHT FRONT

Using needles size 3 mm, cast on 68-76-81-85-93 sts. Work in Garter st same as for back. Cont working back and forth in St st, but work first 8 sts in Garter st (= front edge). Make a buttonhole on first row after Garter st hem: K2, bind off next 4 sts (cast on 4 sts over the bound-off ones on next row), knit rem sts. Cont working back and forth, and make a buttonhole approx. every 8 cm/3.1 in 6 times more (= 7 buttonholes). When work measures 55-55-56-56-56 cm/21.7-21.7-22-22-22 in, bind off first 20-20-22-22-22 sts on RS row (incl. front edge sts), and bind off at neck edge every 2nd row 1x4 sts, 1x3 sts, 1x2 sts and 1x1 st. Cont working until front measures same as back. Bind off.

LEFT FRONT

Work same as for right front but without buttonholes, rev all

shaping.

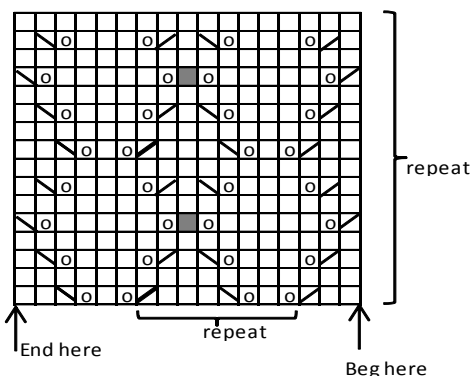
SLEEVES

Using needles size 3 mm, cast on 70-70-78-78-78 sts. Work back and forth 8 rows in Garter st. Cont working in patt as charted 8 (2 times in height). Cont working in rnds in St st. Inc 1 st at each edge approx. every 2 - 1 1/2 - 2 - 2 - 1 1/2 cm/0.8-0.6-0.8-0.8-0.6 in until there is altog. 114-120-124-124-134 sts on a row. When sleeve measures the given length, or as desired, bind off. Work same for the other sleeve.

FINISHING

Sew side seams, leaving approx. 20-21-22-22-24 cm/7.9-8.3-8.7-8.7-9.4 in for armholes. Sew shoulder seams.

Neck band: Beg mid front (from front edge), using needles size 3 mm, knit or pick up approx. 150-150-160-160-160 sts along neck edge. Work back and forth 8 rows in Garter st. Bind off. Weave in all ends on WS.



- = knit (knit on RS, purl on WS)
- = 1 vo
- ◻ = K2tog
- ◊ = K2togtbl
- ▣ = sl 1 st, K2tog, pss0

Viking Nordlys

Sweater

1306-6

Size:	S	M	L	XL
Bust :	88	96	104	112 cm
	34.6	38.8	41.3	44.4 in
Length :	58	60	62	64 cm
	22.8	23.6	24.4	25.2 in
Sleeve length:	12	12	15	15 cm
	4.7	4.7	5.9	5.9 in

ALTERNATIVE YARN: Viking Nordlys (75% superwash wool, 25% nylon), 100g ball, Viking Baby ull (100% merino wool, superwash). Viking Alpaca Fine (85% Alpaka Superfine – 15% highland wool), Viking pure milk fiber (100% milk fiber), 50 g ball

Multiclr, 922 : 4 - 4 - 5 - 6 balls

Circular needle and double pointed needles size 2 1/2 and 3 mm – US 1 or 2 and 2 or 3 – UK/Canadian 13 or 12 and 11

Gauge: 28 sts = approx. 10 cm/4 in over St st using needles size 3 mm. **Check your gauge to ensure success.**

Using needles size 2 1/2 mm, cast on 240 - 272 - 304 - 336 sts. Work in rnds 18 - 18 - 18 - 18 cm/ 7.1-7.1-7.1-7.1 in in K4,P4

rib. Place markers each side, 120 – 136 – 152 – 168 sts for both front and back. Change to needles size 3 mm. Cont working in St st. Incl st both sides of the markers approx. every 1 cm/0.4 in, until there is 336 – 372 – 408 – 444 sts on a rnd, and work measures approx. 42 – 43 – 44 – 45 cm/16.5-16.9-17.3-17.7 in. Divide work at side markers, and finish first back.

Back: Cont working back and forth until work measures approx. 58 – 60 – 62 – 64 cm/22.8-23.6-24.4-25.2 in. Bind off.

Front: Work same as for back. When work measures approx. 54 – 56 – 58 – 60 cm/21.3-22-22.8-23.6 in, bind off 22 – 24 – 24 – 26 mid sts for neck edge. Finish each side separately. Bind off at neck edge every 2nd row 3x6 sts (same for all sizes). When front measures same as back, bind off.

Work same for the other side, rev all shaping.

Finishing : Join shoulder seams, 55 – 63 – 72 – 80 sts for each shoulder.

Neck band : Using needles size 2½ mm, pick up approx. 130 – 134 – 134 – 138 sts. Work 10 rnds in Garter st. Bind off.

Sleeves : Using needles size 2½ mm, cast on 104 – 112 – 120 – 128 sts. Work in rnds 12 – 12 – 15 – 15 cm/4.7-4.7-5.9-5.9 in in K4,P4 rib. Bind off in rib.

Sew on sleeves.

Viking Nordlys

Shoulder warmer/scarf

1306-7

Size:	Woman
Length: approx.	250 cm 98.5 in

ALTERNATIVE YARN: Viking Nordlys (75% superwash wool , 25% nylon) , 100g ball, Viking Baby ull (100 % merino wool , superwash). Viking Alpaca Fine (85% Alpaka Superfine – 15% highland wool), Viking pure milk fiber (100% milk fiber), 50 g ball

Multiclr, 923

5 balls

Circular needle size 3mm – US 2 or 3 – UK/Canadian 11

Gauge: 28 sts = approx. 10 cm/4 in over St st using needles size 3 mm. **Check your gauge to ensure success.**

Using needles size 3 mm, cast on 64 sts. Work back and forth 25 cm/9.8 in in K2,P2 rib. Knit 1 row (= RS), and inc evenly across the row number of sts to be 126 sts. Cont working as foll:

1st row (WS): *K6, P6*, rep *-*across the row, end with K6.

2nd row (RS): Knit.

Rep 1st and 2nd row until work measures 200 cm/78.8 in, measured from rib.

Dec evenly across next row number of sts to be 64 sts. Work 25 cm/9.8 in in K2,P2 rib. Bind off in rib.

Finishing:

Sew ribbed sides tog + approx. 20 cm/7.9 in to form sleeves.

Weave in all ends on WS.

Viking Nordlys

Poncho

1306-8

Size:	Woman
Length: approx.	70 cm 27.6 in

ALTERNATIVE YARN: Viking Nordlys (75% superwash wool , 25% nylon) , 100g ball, Viking Baby ull (100 % merino wool , superwash). Viking Alpaca Fine (85% Alpaka Superfine – 15% highland wool), Viking pure milk fiber (100% milk fiber), 50 g ball

Multiclr, 967

4 balls

Pair of knitting needles, circular needle and double pointed needles size 3 mm – US 2 or 3 – UK/Canadian 11

Gauge: 28 sts = approx. 10 cm/4 in over St st using needles size 3 mm. **Check your gauge to ensure success.**

PONCHO

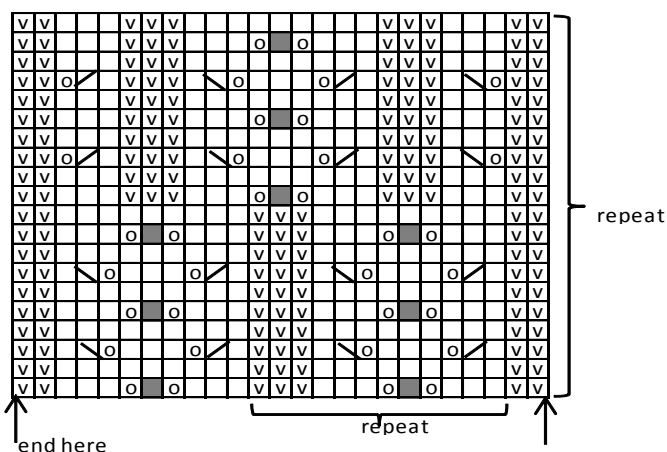
Using needles size 3 mm, cast on 121 sts. Cont working in patt as charted (beg and end as charted). When work measures approx. 90 cm/35.4 in, bind off, knit-sts knitwise, purl-sts purlwise.

Work same for the other piece.

Finishing: Sew one short edge to the long side of another piece (see photo). Do the same for the other side.

Armhole edges: Mark the armholes, approx. 15 cm/ in. Join sides with few sts. Using dpn size 3 mm, pick up approx. 80 sts. Work in K2,P2 rib, until armhole edge measures approx. 15 cm/5.9 in. Bind off in rib. Work same for the other armhole edge.

Neckband: Using needles size 3 mm, pick or knit up approx. 260 sts around neck edge (approx. 64 sts along each 4 pieces + 1 extra st mid front, back and both shoulders). Cont working in rnds i K2,P2 rib, and dec1 st both sides of each marker every 2nd rnd (= dec 8 sts on each rnd). Work until neckband measures approx. 4 cm/1.6 in. Bind off.



- = knit (knit o RS, purl on WS)
- ◻ = purl (purl on RS, knit on WS)
- = 1 yo
- ◻ = K2tog
- ◻ = K2togtbl
- ◻ = sl 1 st, K2tog, pss0

Front: Cont working back and forth in patt and St st until work measures approx. 85 cm/33.5 in.

Back: Work same as for back.

Slip both back and front on same needle, and cast on 1 st between the pieces. Cont working back and forth, dec **same time** 1 st inside Seed sts every 1 cm/ in. When work measures approx. 120 cm/47.2 in, cont working in rnds. Stop working in Seed st, and dec where arrows point out. Rep dec until 69 sts rem, and work measures approx. 135 cm/53.1 in. Change to needles size 2½ mm. Work 1 rnd in St st, and dec evenly across number of sts to be 64 sts. Work in rnds 15 cm/5.9 in in K4,P4 rib. Bind off in rib.

Using needles size 3 mm, cast on 352-376 sts. Work in rnds approx. 5 cm/2 in in K4,P4 rib. Cont working in rnds in St st until work measures approx. 26-28 cm/10.2-11 in. Divide work for neck: Work first 176-188 sts (= back), turn, work 352-376 sts. Cont working in the same way until work measures approx. 48-51 cm/18.9-20.1 in, measured from cast-on edge, and neck opening measures approx. 22-23 cm/8.7-9.1 in. Cont working in **rnds** over all sts until work measures approx. 54-57 cm/21.3-22.4 in, (shoulder piece measures approx. 6-6 cm/2.4-2.4 in). Dec evenly across number of sts to be 240-272 sts. Cont working in rnds approx. 12-12 cm/4.7-4.7 in in K2,P2 rib. Bind off in rib. Fold ribbed edge in double on RS, and secure with few sts over each shoulder.

Weave in all ends on WS.

Viking Nordlys

Socks with cables

1306-12

Size: Woman

36/38 - 40/42

ALTERNATIVE YARN: Viking Nordlys (75% superwash wool , 25% nylon) , 100g ball, Viking Baby ull (100 % merino wool , superwash). Viking Alpaca Fine (85% Alpakka Superfine – 15% highland wool), Viking pure milk fiber (100% milk fiber), 50 g ball

Multiclr, 934 :

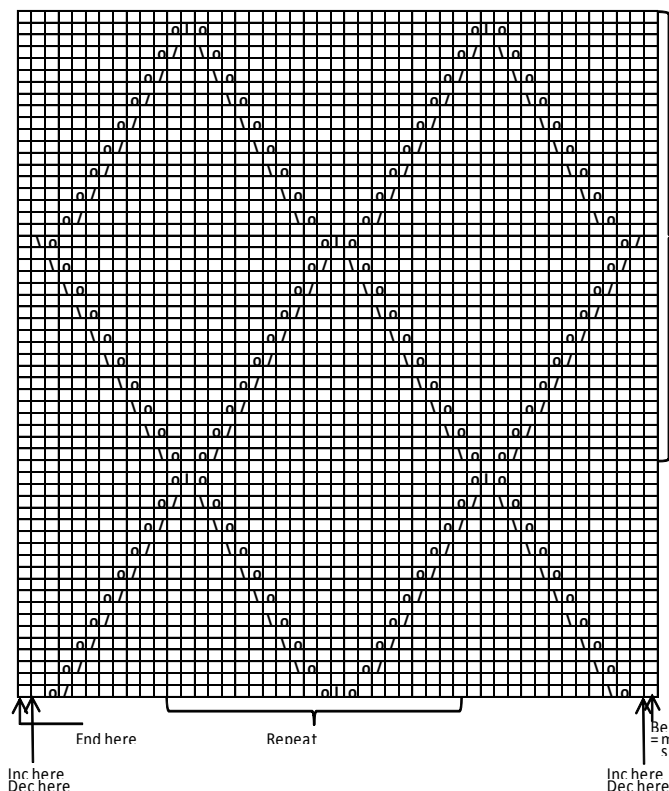
1 – 1 ball

Double pointed needles size 2½ and 3 mm – US 1or 2 and 2 or 3 – UK/Canadian 13 or 12 and 11

Gauge: 28 sts = approx. 10 cm/4 in over St st using needles size 3 mm. **Check your gauge to ensure success.**

Using needles size 2 ½ mm, cast on 56 – 60 sts. Work 14-15 cm/5.5-5.9 in in K1,P1 rib. Change to needles size 3 mm, and work 4 rnds in St st. Slip 29 – 31 sts on holder, and knit heel with rem sts: Work back and forth 6-6 cm/2.4-2.4 in in St st. Dec as foll: Work until 9 – 10 sts rem, turn, work until 9 – 10 sts rem, turn, and work until 1 st rem before turning, sl 1 st, K1, pss, turn, work until 1 st rem before turning, P2tog. Rep dec until all side sts are decreased. Pick up 13 – 13 sts from each side of the heel = 64 – 66 sts. Cont working in rnds in patt B over the sts on holder, and in St st over rem sts. Dec **same time** 1 st both sides of the heel every 2nd rnd until 56 – 60 sts rem. Cont working until foot measures 22 – 24 cm/8.7-9.4 in (or 3 – 4 cm/ in than desired length of a ready sock). Place markers around side sts, same number of sts for both sides. Dec as foll: Work until 2 sts rem before a marker, K2togtbl, K1, K2tog. Rep dec at each side every 2nd rnd, and then every rnd until approx. 8 sts rem. Break yarn, thread through rem sts, and weave in on WS.

Pattern A



- = Knit on RS, purl on WS
- ▣ = 1 v
- ▤ = sl 1 st, K1, pss
- ▥ = K2tog
- ▦ = sl 1 st K2tog pss

Viking Nordlys

Ponchovest

1306-11

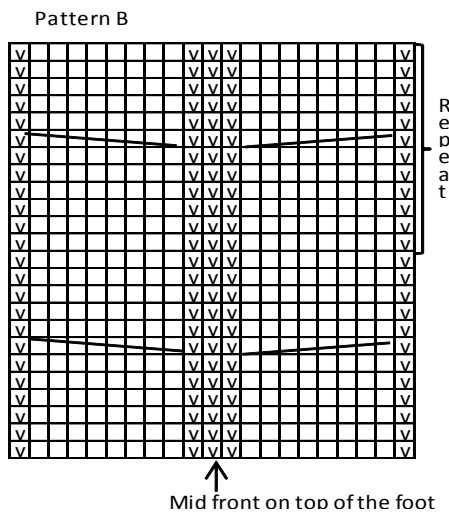
Size:	S/M	-	L/XL
Bust: approx.	100	-	120 cm
	39.4	-	47.2 in
Length: approx.	60	-	63 cm
	23.6	-	24.8 in

ALTERNATIVE YARN: Viking Nordlys (75% superwash wool , 25% nylon) , 100g ball, Viking Baby ull (100 % merino wool , superwash). Viking Alpaca Fine (85% Alpakka Superfine – 15% highland wool), Viking pure milk fiber (100% milk fiber), 50 g ball

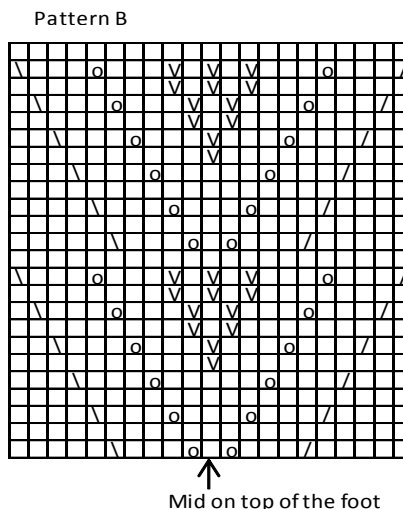
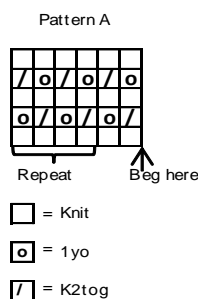
Multiclr, 964 4 - 5 balls

Circular needle and dpn size 3 mm – US 2 or 3 – UK/Canadian 11

Gauge: 28 sts = approx. 10 cm/4 in over St st using needles size 3 mm. **Check your gauge to ensure success.**



- = Knit
- ◻ = Purl
- = Sl first 4 sts on cn and hold to front, K4, knit sts from cn
- = Slip first 4 sts on cn and hold to back, K4, knit sts from cn



- = Knit
- ◻ = 1yo
- = Sl 1 st, K1, pssso
- = K2tog
- ◻ = Purl

Viking Nordlys

Socks

1306-13

Size: Woman

36/38 -

40/42

ALTERNATIVE YARN: Viking Nordlys (75% superwash wool, 25% nylon), 100g ball, Viking Baby ull (100 % merino wool , superwash). Viking Alpaca Fine (85% Alpakka Superfine – 15% highland wool), Viking pure milk fiber (100% milk fiber), 50 g ball

Multiclr, 927:

1 – 1 ball

Double pointed needles size 2½ and 3mm – US 1 or 2 and 2 or 3 – UK/Canadian 13 or 12 and 11

Gauge: 28 sts = approx. 10 cm/4 in over St st using needles size 3 mm. **Check your gauge to ensure success.**

Using needles size 2½ mm, cast on 56 – 60 sts. Work 12-13 cm/4.7-5.1 in in K1,P1 rib. Change to needles size 3 mm. Work patt A. Slip 29 – 31 sts on holder, and knit the heel with rem sts: Work back and forth 6-6 cm/2.4-2.4 in in St st. Dec as foll: Work until 9 – 10 sts rem, turn, work until 9 – 10 sts rem, turn, work until 1 st rem before turning, sl 1 st, K1, pssso, turn work until 1 st rem before turning, P2tog. Cont dec in the same way until all side sts are decreased. Pick up 13 – 13 sts from both sides of the heel = 64 – 66 sts. Cont working in patt B over mid front sts on holder, and in St st over rem sts. Dec **same time** 1 st both sides of the heel every 2nd rnd until 56 – 60 sts rem. Cont working until foot measures 22 – 24 cm/8.7-9.4 in (or 3 – 4 cm/1.2-1.6 in less than a ready sock). Place markers around each side st, same number of sts for both sides. Dec as foll: Work until 2 sts rem before a marker, K2togtbl, K1, K2tog. Rep dec at each side every 2nd rnd 3 times, and after that every rnd until approx. 8 sts rem. Break yarn, thread through rem sts, and weave in on WS.

Viking Nordlys

Shawl

1306-14

Size

Woman

ALTERNATIVE YARN: Viking Nordlys (75% superwash wool , 25% nylon), 100g ball, Viking Baby ull (100 % merino wool , superwash). Viking Alpaca Fine (85% Alpakka Superfine – 15% highland wool), Viking pure milk fiber (100% milk fiber), 50 g ball

Multiclr, 934

2 balls

Crochet hook size 3 mm – US C/2 or D/3 – UK/Canadian 11

Gauge: 26 sc using crochet hook size 3 mm = approx. 10 cm/4 in.

Check your gauge to ensure success.

Using crochet hook size 3 mm, ch5. Join into a ring with 1 sl st.

1st row: Ch4, 2 dc, end with 1 tr, turn.

2nd row: Ch5, 2 dc to prev row's dc, ch1, 2 dc to prev row's dc, ch1, end with 1 tr, turn.

3rd row: Ch5, 2 dc to prev row's last ch-st, ch3, 2 dc to prev row's 5th ch-st, ch1, 1 tr, turn.

4th row: Ch5, 2 dc to prev row's last ch-st, ch3, (1dc - ch2 – 1dc) to prev row's mid ch-st, ch3, 2 dc to prev row's 5th ch-st, ch1, end with 1 tr, turn.

5th row: Ch5, 2 dc to prev row's last ch-st, ch4, 5 dc between 2 mid ch-sts, ch4, 2 dc to prev row's 5th ch-st, end with 1 tr, turn.

6th row: Ch5, 2 dc to prev row's last ch-st, ch7, 5 sc, ch7, 2 dc to prev row's 5th ch-st, end with 1 tr, turn.

7th row: Ch5, 2 dc to prev row's ch-st, ch3, (1 dc-ch2-1 dc) to prev row's 4th ch-st, ch3, 3 sc to prev row's mid 3sc, ch3, (1 dc – ch2 – 1 dc) to prev row's 4th ch-st, ch3, 2 dc to prev row's 5th ch-st, 1 tr, turn.

8th row: Ch5, 2 dc, ch4, 5 dc between prev row's 2 ch-sts, ch4, 1 sc to mid sc, ch4, 5 dc between prev row's 2 ch-sts, ch4, 2 dc to prev row's 5th ch-st, 1 tr, turn.

9th row: Ch5, 2 dc to prev row's last ch-st, ch7, 5 sc, ch7, 5 dc, 7ch, 2 dc to prev row's 5th ch-st, ch1, 1 tr, turn.

10th row: Ch5, 2 dc to prev row's last ch-st, ch3, (1dc – ch2 – 1dc) to prev row's 4th ch-st, ch3, 3 sc to prev row's 3 mid sc, ch3, (1dc – ch2 – 1 dc) to prev row's 4th ch-st (= mid), ch3, 3 sc, ch3, (1dc – ch2 – 1dc) to prev row's 4th ch-st, ch3, 2 dc to prev row's 5th ch-st, ch1, 1 tr, turn.

11th row: Ch5, 2 dc to prev row's last ch-st, ch4, 5 dc between prev row's 2 ch-sts, ch4, 1 sc to prev row's mid sc, ch4, 5 dc between prev row's 2 ch-sts (= mid), ch4, 1 sc to prev row's mid sc, ch4, 5 dc between prev row's 2 ch-sts, ch4, 2 dc to prev row's 5th ch-st, ch1, 1 tr, turn.

Rows 9, 10 and 11 form the patt report. Rep rows 9, 10 and 11, and keep increasing until work measures approx. 70 cm/27.6 in, measured mid back (or you have finished both balls). End with a complete report.

Weave in all ends on WS.

Viking Nordlys

Wristwarmers, hat and scarf 1306-15

Size:	Woman
Length, wristwarmers:	25cm
	9.8 in
Circumference, hat :	54 cm
	21.3 in

ALTERNATIVE YARN:Viking Nordlys (75% superwash wool , 25% nylon) , 100g ball, Viking Baby ull (100 % merino wool, superwash). Viking Alpaca Fine (85% Alpaka Superfine – 15% highland wool), Viking pure milk fiber (100% milk fiber), 50 g ball

Scarf

Multiclr, 911 : 2 balls

Hat + wristwarmers

Multiclr, 911: 1 ball

Double pointed needles size 3 mm – US 2 or 3 – UK/Canadian 11

+ Crochet hook size 2½ mm – US C/2 – UK/Canadian 12

Gauge: 28 sts = approx. 10 cm/4 in over St st using needles size 3 mm. **Check your gauge to ensure success.**

Pattern A:

1st rnd: K2tog, 1 yo, K1, 1 yo, K1, 1 yo, K1, 1 yo, sl 1 st, K1, pssso
2nd rnd: Knit
3rd rnd: K2tog, K5, sl 1 st, K1, pssso
4th rnd: Knit
Rep 1st-4th rnd 4

WRISTWARMERS

Using needles size 3 mm, cast on 46 sts. Work as foll: P2, patt A over 7 sts, P2, patt A over 7 sts, P2, patt A over 7 sts, cable patt over 12 sts (see chart), patt A = 46 sts.

When work measures 8 cm/3.1 in, cont working as foll: P2, St st over sts worked in patt A, K2, St st over sts worked in patt A,

work rem sts same as before. Next rnd: Dec evenly across the sts worked in St st number of sts to be 24 sts. When work measures 11 cm/4.3 in, inc for thumb gusset: P2, K2 , M1, K1, M1. Rep inc every 3rd rnd altog. 5 times = 11 sts for thumb. Slip thumb sts on holder, and cast on 3 new sts over thumb opening = 26 sts in St st. Cont working until work measures 20 cm/7.9 in. Bind off.

Thumb: Slip 11 sts from holder on needles size 3 mm. Pick up 3 sts from cast-on sts, and 1 st from each side = 16 sts. Divide sts on 3 dpn, and work in St st until thumb measures 3 cm/1.2 in. Bind off.

Finishing: Crochet a picot edge to bound-off edge: Using crochet hook size 2½ mm, crochet sc rnd (take care that the edge doesn't turn to be too tight). Next rnd: *Ch4, 1 sl st to 1st ch-st, skip 1 st*, rep *-* across the rnd.

Work picot edge to thumb as well.

Weave in all ends on WS.

Work same for the other wristwarmer, with thumb on the other side.

HAT

Using needles size 3 mm, cast on 152 sts. Work as foll: *Pattern A over 7 sts and cable patt over 12 sts*, rep *-* 8 times. When hat measures approx. 20 cm/7.9 in, dec 1 purl-st (= P2tog) both sides of cables. Work 1 rnd in patt same as before. beg crown dec: * St st over 7 sts (over patt A), K2tog, cable patt over de next 7 sts, sl last cable patt st, K1, pssso*, rep *-* across the rnd. Cont working in St st and cables (all purl-sts are decreased). Dec after 1 rnd: *K5, K2tog, cable patt over 8 sts*, rep *-* across the rnd. Knit 1 rnd. Rep dec every 2nd rnd with 1 st less between dec until 40 sts rem. Rep dec **every** rnd until 16 sts rem. Break yarn, thread through rem sts, pull slightly, and weave in on WS.

Pattern B:

1st row: K2tog, 1 yo, K1, 1 yo, K1, 1 yo, K1, 1 yo, sl 1 st, K1, pssso
2nd row: Purl
3rd row: K2tog, K5, sl 1 st, K1, pssso
4th row: Purl
Rep 1st-4th row

Size, scarf: 25 X 180 cm

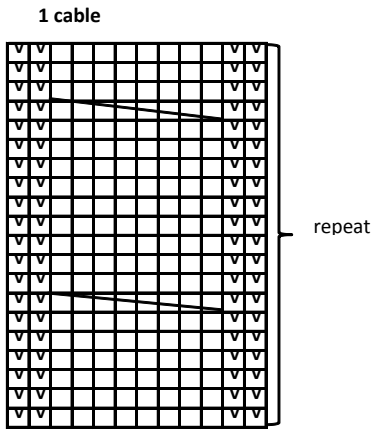
9.8 x 70.9 in

SCARF

Using needles size 3 mm, cast on 68 sts. Work in patt as foll: *P2, patt B over 7 st, 1 cable patt over 12 st, patt B, 1 cable patt, patt B, 1 cable, patt B, end with P2*, rep *-* until scarf measures approx. 180 cm/70.9 in. Bind off.

Using crochet hook 2½ mm, crochet picot edges to both ends of the scarf (check that edges don't turn to be too tight).

Weave in all ends.



[V] = purl
 [] = knit
 [] [] [] [] [] [] [] [] [] [] [] [] = Sl 4 sts on cn, and hold to for K4, knit sts from cn

Viking Nordlys – Baby Ull

Sweater and hat 1306-16

Size:	4/6	-	8	-	10/12 yrs
Bust:	68	-	75	-	83 cm
	26.8	-	29.5	-	32.7 in
Length:	38	-	48	-	56 cm
	15	-	18.9	-	22 in
Sleeve length:	30	-	36	-	44 cm
	11.8	-	14.2	-	17.3 in

ALTERNATIVE YARN: Viking Nordlys (75% superwash wool , 25% nylon) , 100g ball, Viking Baby ull (100 % merino wool, superwash). Viking Alpaca Fine (85% Alpaka Superfine – 15% highland wool), Viking pure milk fiber (100% milk fiber), 50 g ball

Baby Ull, Navy Blue, 326	2	-	3	-	4 balls
Nordlys, Multiclr, 927	2	-	3	-	3 balls

Circular needle and double pointed needles size 3 mm – US 2 or 3 – UK/Canadian 11

Gauge: 28 sts = approx. 10 cm/4 in over St st using needles size 3 mm. **Check your gauge to ensure success.**

SWEATER

Using needles size 3 mm and multiclr yarn, cast on 192-212-232 sts. Work in rnds 3 cm/1.2 in in K2tbl, P2 rib. Place markers both sides, 97-105-117 sts for back, and 95-103-115 sts for front. Cont working in St st until work measures approx. 15-18-20 cm/5.9-7.1-7.9 in. Work in stripes *2 rnds in Baby ull – 2 rnds in Nordlys*, rep *-* until work measures the given length. When work measures 35-42-47 cm/13.8-16.5-18.5 in, or desired length before armholes, bind off 10-12-12 sts at each side = 5-6-6 sts both sides of the markers. Note! End with a complete stripe. Leave work aside, and knit the sleeves.

Sleeves

Using needles size 3 mm and multiclr yarn, cast on 48-52-52 sts. Work in rib same as for body. Knit 1 rnd, and inc evenly across number of sts to be 56-60-60 sts. Place a marker mid under sleeve. Cont working in St st. Inc 1 st both sides of the marker every 1 ½ -1 ½-1 ½ cm/0.6-0.6-0.6 in. When sleeve measures approx. 10-12-14 cm/4-4.7-5.5 in, cont working in stripes. Rep inc until there is altog. 90-100-112 sts on a rnd.

When work measures 35-42-47 cm/ 13.8-16.5-18.5 in, end with same stripe as body, bind off 10-12-12 sts mid under arm = 5-6-6 sts both sides of the marker. Slip rem sts on holder, and work same for the other sleeve.

Yoke

Slip all pieces on same circular needle = 332-364-408 sts. Place markers at each 4 seam lines (between sleeves and body). Work 2 rnds in St st (= 1 stripe), and dec evenly across number of sts to be 44-44-32 sts = 288-320-376 sts. Cont working with stripes, and dec evenly across every 10th rnd: 36 sts 3-4-5 times, and then 48 sts 1-1-1 time = 132-128-148 sts. When work measures approx. 16-18-20 cm/6.3-7.1- 7.9 in measured from slipping the pieces on same circular needle, measured mid front, ending with a complete stripe in multiclr Nordlys. Knit 1 rnd, and dec evenly across number of sts to be 104-112-120 sts. Work 5-6-6 cm/2-2.4-2.4 in in K2tbl, P2 rib. Bind off rather loosely in rib. Fold rib in half and sew on WS.

Finishing

Sew under arm seams.
Weave in all ends on WS.

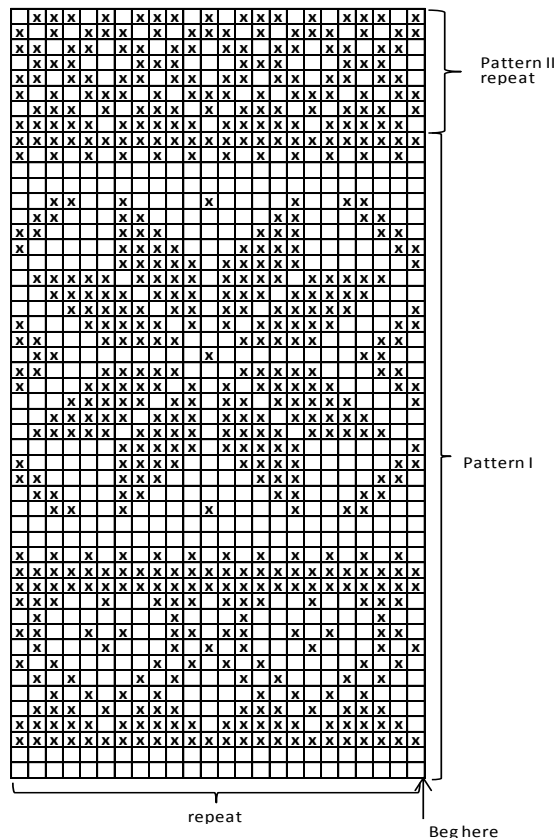
HAT

Size:	Pike
Circumference:	approx. 44 cm
	17.3 in

Using needles size 3 mm and navy blue yarn, cast on 120 sts. Work 5 cm/2 in in St st, purl 1 rnd = folding edge. Cont working in rnds in patt I as charted.

When patt I is ready, cont working in patt II until work measures approx. 17 cm/6.7 in (measured from folding edge). Cont working with navy blue yarn without patt, and dec for crown as foll: *K6, K2tog*, rep across the rnd. Work 2 rnds without dec. Rep dec every 3rd rnd 1 st less between each dec until 30 sts rem on a rnd. Work 2 rnds in St st. Next rnd: Knit all sts tog in pairs = 15 sts rem. Break yarn, thread through rem sts, pull tightly, and weave in on WS.

PATTERN FOR HAT



[] = Baby Ull, navy blue
 [x] = multiclr Nordlys

Viking Nordlys

Hat and necklet 1306-17

Size:	2-4 and 6-10 yrs
Width, necklet:	90 – 100 cm
	35.4 – 39.4 in
Circumference, hat:	48 – 52 cm
	18.9-20.5 in

ALTERNATIVE YARN: Viking Nordlys (75% superwash wool , 25% nylon) , 100g ball, Viking Baby ull (100 % merino ull , superwash). Viking Alpaca Fine (85% Alpaka Superfine – 15% highland wool), Viking pure milk fiber (100% milk fiber), 50 g ball

Hat and necklet

Multiclr, 934 2 - 2 balls

Circular needle and double pointed needles size 2½ and 3 mm – US 1 or 2 and 2 or 3 – UK/Canadian 13 or 12 and 11

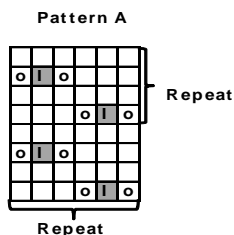
Gauge: 28 sts = approx. 10 cm/4 in over St st using needles size 3 mm. **Check your gauge to ensure success.**

HAT

Using needles size 2½ mm, cast on 120 – 128 sts. Work in rnds approx. 4 – 4 cm/1.6-1.6 in in K1,P1 rib. Change to needles size 3 mm. Work 1 rnd in St st, and inc evenly across number of sts to be 132 – 144 sts. Work in patt A, and rep it 2 times. Cont working in St st. When work measures approx. 10 – 12 cm/ 4-4.7 in, beg crown dec: *Sl 1 st, K2tog, pssso. work St st over 30 – 33 sts*, rep *-* across the rnd. Rep dec every 2nd rnd with 2 sts less between dec until 4-8 sts rem on a rnd. Break yarn, thread through rem sts, pull tightly and weave in on WS.

NECKLET

Using needles size 2½ mm, cast on 252 – 276 sts. Work 6 rnds in Garter st. Change to needles 3 mm. Work in patt A until work measures approx. 20 – 22 cm/7.9-8.7 in. Change again to needles size 2½ mm, and work 6 rnds in Garter st. Bind off.



- = Knit
- = 1 yo
- ▣ = Sl 1 st, K2tog, pssso

Viking Nordlys

Beret and wristwarmers 1306-18

Size:	2-4 and 6-10 yrs
ALTERNATIVE YARN: Viking Nordlys (75% superwash wool , 25% nylon) , 100g ball, Viking Baby ull (100 % merino wool , superwash). Viking Alpaca Fine (85% Alpaka Superfine – 15% highland wool), Viking pure milk fiber (100% milk fiber), 50 g ball	

Multiclr, 927 : 1 - 1 ball

Circular needle and double pointed needles size 2½ and 3 mm – US 1 or 2 and 2-3 – UK/Canadian 13 or 12 and 11

Gauge: 28 sts = approx. 10 cm/4 in over St st using needles size 3 mm. **Check your gauge to ensure success.**

BERET

Using needles size 3 mm, cast on 45 – 54 sts. Work as foll: *K45 – 54, turn, P45 – 54. Turn, K40 – 48, turn, P35 – 42. Turn, K30 – 36, turn, P25 – 30. Turn, K20 – 24, turn, P15 – 18. Turn, K10 – 12, turn, P25 – 30. Turn, K20 – 24, turn, P20 – 24*, rep *-* altog 22 times. Join tog with cast on sts.

Close hole on top.

Using needles size 2½ mm, knit or pick up approx. 120 – 124 sts along the edge. Work in rnds approx. 2-2 cm/0.8-0.8 in in K1,P1 rib. Bind off in rib.

WRISTWARMERS

Using needles size 2½ mm, cast on 48 – 52 sts. Work in rnds approx. 9-10 cm/3.5-4 in in K2,P2 rib. Change to needles size 3 mm. Work in St st until work measures approx. 11 – 13 cm/4.3-5.1 in. Change to needles size 2½ mm. Work 6 rnds in Garter st. Bind off.

Viking Nordlys

Necklet and headband 1306-19

Size:	2-4 and 6-10 yrs
ALTERNATIVE YARN: Viking Nordlys (75% superwash wool , 25% nylon) , 100g ball, Viking Baby ull (100 % merino wool , superwash). Viking Alpaca Fine (85% Alpaka Superfine – 15% highland wool), Viking pure milk fiber (100% milk fiber), 50 g ball	

Multiclr, 949 : 1 - 1 ball

Circular needle and double pointed needles size 2½ and 3 mm – US 1 or 2 and 2 or 3 – UK/Canadian 13 or 12 and 11 + 3 buttons

Gauge: 28 sts = approx. 10 cm/4 in over St st using needles size 3 mm. **Check your gauge to ensure success.**

NECKLET

Beg from lower edge: Using needles size 3 mm, cast on 95 – 105 sts. Work back and forth 10 rows in Seed st. Cont as foll: Seed st over 8 sts, St st over 79 – 89 sts, and Seed st over 8 sts. Cont working as established until work measures approx. 4 cm/1.6 in. Leave work aside, and knit same for another piece (= front and back).

Beg from back: Seed st over 8 sts, sl next st, K1, pssso , St st over 75 – 85 sts, K2tog, Seed st over 8 sts, cast on 47 – 51 sts (= right shoulder), Seed st over 8 sts, sl next st, K1, pssso, St st over 75 –

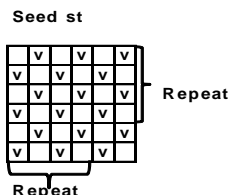
85 sts, K2tog, Seed st over 8 sts, cast on 47 – 51 sts (= left shoulder).

Cont working in rnds as established with Seed st over the new cast on sts + dec altog. 11 rnds.

Next rnd: *Seed st over 8 sts, sl next st, K1, pssso, St st over 53 – 63 sts, K2tog, Seed st over 8 sts, sl next st, K1, pssso, St st over 43 – 47 sts, K2tog*, rep *-* one more time. Cont working as established, and rep dec every 2nd rnd until 104 – 108 sts rem.

Neck band: Cast on 10 new sts. Beg now rnd from 8 Seed sts on left front, and work back and forth in Seed st over all sts (including 10 new sts). When neck band measures approx. 3 cm/1.2 in, bind off in Seed st.

Finishing: Join neck band split by sewing there a button.



Headband

Using needles size 3mm, cast on 18 – 20 sts. Work back and forth in Seed st until headband measures approx. 50 – 52 cm/19.7-20.5 in. Bind off in Seed st. Place bound-off edge approx. 5 cm/2 in over the cast-on edge, and sew on 2 buttons to join the ends.

Viking Nordlys

Sweater, hat and wristwarmers 1306-20

Size:	4/6	- 8	- 10/12 yrs
Chest:	68	- 75	- 83 cm
	26.8	- 29.5	- 32.7 in
Length, front:	38	- 45	- 51 cm
	15	- 17.7	- 20.1 in
Length, back:	43	- 50	- 56 cm
	16.9	- 19.7	- 22 in
Sleeve length:	32	- 38	- 44 cm
	12.6	- 15	- 17.3 in

ALTERNATIVE YARN: Viking Nordlys (75% superwash wool , 25% nylon) , 100g ball, Viking Baby ull (100 % merino wool , superwash). Viking Alpaca Fine (85% Alpaka Superfine – 15% highland wool), Viking pure milk fiber (100% milk fiber), 50 g ball

Multiclr, 969 3 - 4 - 4 balls

Circular needle and double pointed needles size 3 mm – US 2 or 3 – UK/Canadian 11

Gauge: 28 sts = approx. 10 cm/4 in over St st using needles size 3 mm. **Check your gauge to ensure success.**

Seed st:

1st row: K1, P1

2nd row: Knit all purl-sts, and purl all knit-sts.

Rep 2nd row.

Back

Using needles size 3 mm, cast on 95-105-117 sts. Work in Seed st until work measures approx. 3 cm/ in. Cont working in St st

until work measures approx. 43-50-56 cm/16.9-19.7-22 in. Bind off.

Front

Using needles size 3 mm, cast on 95-105-117 sts. Work same as for back. When work measures approx. 32-39-45 cm/12.6-15.4-17.7 in, bind off 25-27-31 mid sts for neck edge. Finish each side separately. Bind off at neck edge every 2nd row 1x4 sts, 1x3 sts, 1x2 sts and 1x1 st. When work measures 38-45-51 cm/ in, bind off. Work same for the other side, rev all shaping.

Sleeves

Using needles size 3 mm, cast on 43-47-51 sts. Work back and forth 3 cm/ in in Seed st. Cont working in rnds in St st. Inc evenly across 1st rnd number of sts to be 55-59-63 sts. Place a marker beg of rnd = mid under sleeve. Inc 1 st both sides of the marker every 1 ½-2-2 ½ cm/0.6-0.8-1 in until there is altog. 85-89-95 sts on a rnd. When sleeve measures the given length, or as desired, bind off.

Finishing

Sew shoulder seams.

Neckband: Using needles size 3 mm, pick or knit up approx. 109-115-123 sts around neck edge. Work in rnds in Seed st 3 cm/ in. Bind off in rib.

Sew side seams, leaving approx. 4 cm/1.8 in splits each side (Note! Back is approx. 5 cm/2 in longer than front). Leave also approx. 15-16-17 cm/5.9-6.3-6.7 in openings for armholes. Sew on sleeves.

Weave in all ends on WS.

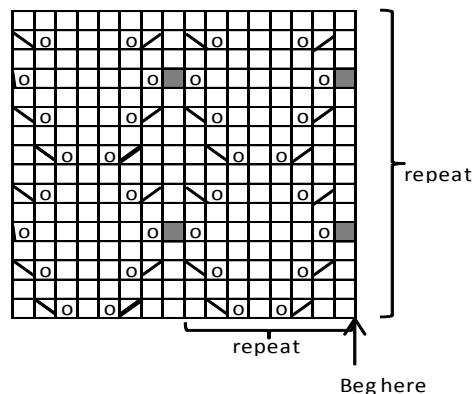
HAT

Using needles size 3 mm, cast on 128 sts. Work 6 rnds in Garter st. Cont working in rnds in patt as charted until work measures approx. 18 cm/7.1 in. Beg dec as foll: *K6, K2tog*, rep *-* across the rnd. Cont working in St st, and rep dec every 2nd rnd with 1 st less between each dec until 32 sts rem on a rd. Next rnd: Knit all sts tog in pairs = 16 sts rem. Break yarn, thread through rem sts. Weave in all sts on WS.

WRISTWARMERS

Using needles size 3 mm, cast on 48 – 52 sts. Work 2 cm/0.8 in in Seed st. Cont working in rnds in St st until work measures approx. 9 – 10 cm/3.5-4 in. Place a marker beg of rnd (= palm side). Beg from marker: K5-6, bind off next 5 sts for thumb opening. (Next rnd: Cast on 5 sts over the bound-off sts). Work 2 rnds in St st, and then 2 cm/0.8 in in Seed st. Bind off.

Work same for the other wristwarmer, bind off for thumb 5-6 sts **before** marker. Weave in all ends on WS.



□ = knit(knit on RS, purl on WS)

○ = 1 yo

⊠ = K2tog

⊞ = K2togtl

■ = sl 1 st, K2tog, pssso

Viking Nordlys

Hat and necklet

1306-21

Size: 2-4 and 6-10 yrs

ALTERNATIVE YARN: Viking Nordlys (75% superwash wool , 25% nylon) , 100g ball, Viking Baby ull (100 % merino wool , superwash). Viking Alpaca Fine (85% Alpakka Superfine – 15% highland wool), Viking pure milk fiber (100% milk fiber), 50 g ball

Multiclr, 965 : 1 - 1 ball

Circular needle and double pointed needles size 2½ and 3 mm – US 1 or 2 and 2 or 3 – UK/Canadian 13 and 12 or 11

Gauge: 28 sts = approx. 10 cm/4 in over St st using needles size 3 mm. **Check your gauge to ensure success.**

HAT

Using needles size 2 ½ mm, cast on 116 – 124 sts. Work in rnds 4-5cm/1.8-2 in in K1,P1 rib. Change to needles size 3 mm, and cont working in St st. When work measures approx. 20 – 22 cm/7.9-8.7 in, beg dec for crown: Knit all sts tog in pairs. Knit 1 rnd. Rep dec until 15 – 16 sts rem on a rnd. Break yarn, thread through rem sts, pull tightly, and weave in on WS. Make 3 small pompons with 3 short twined cords (2 approx. 7 cm/2.8 in, and 1 approx. 10 cm/4 in).

NECKLET

Using needles size 2 ½ mm, cast on 130 – 140 sts. Work in rnds approx. 6 cm/2.4 in in K1,P1 rib. Change to needles size 3 mm. Work in St st until work measures approx. 20 – 24 cm/7.9-9.4 in. Change to needles size 2 ½ mm, and work in rnds in K1,P1 rib until work measures approx. 26 – 30 cm/10.2-11.8 in. Bind off in rib.

Viking Nordlys

Hat

1306-22

Size: 2-4 and 6-10 yrs

ALTERNATIVE YARN: Viking Nordlys (75% superwash wool , 25% nylon) , 100g ball, Viking Baby ull (100 % merino wool , superwash). Viking Alpaca Fine (85% Alpakka Superfine – 15% highland wool), Viking pure milk fiber (100% milk fiber), 50 g ball

Multiclr, 964 : 1 - 1 ball

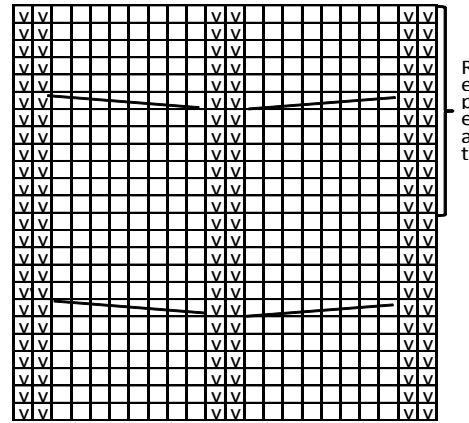
Circular needle and double pointed needles size 2½ and 3 mm – US 1 or 2 and 2 or 3 – UK/Canadian 13 or 12 and 11

Gauge: 28 sts = approx. 10cm/4 in over St st using needles size 3 mm. **Check your gauge to ensure success.**

HAT

Using needles size 2 ½ mm, cast on 120 – 136 sts. Work 14 – 16 rnds in Garter st. Change to needles size 3 mm. Beg mid back, and work as foll: St st over 53–61 sts, inc 8 sts over next 14 sts = 22 sts, patt I, and St st over 53-61 sts. Cont working as established until work measures approx. 20 – 22 cm/7.9-8.7 in. Work 1 rnd in St st, and dec evenly across patt I number of sts to be 14 sts. Beg crown dec: Knit all sts tog in pairs. Knit 1 rnd. Rep dec until 15–17 sts on a rnd. Break yarn, thread through rem sts, pull tightly, and weave in on WS. Make a big pompon, and fasten on top.

Pattern I



□ = Knit on RS, purl on WS

▣ = Purl

▣▣▣▣ = Sl 4 sts on cn and hold to front, K4, knit sts from cn

▣▣▣▣ = S 4 sts on cn and hold to back, K4, knit sts from cn

Viking Nordlys

Cable pattern socks

1306-23

Size: 2/4 - 6/8 - 10/12 yrs

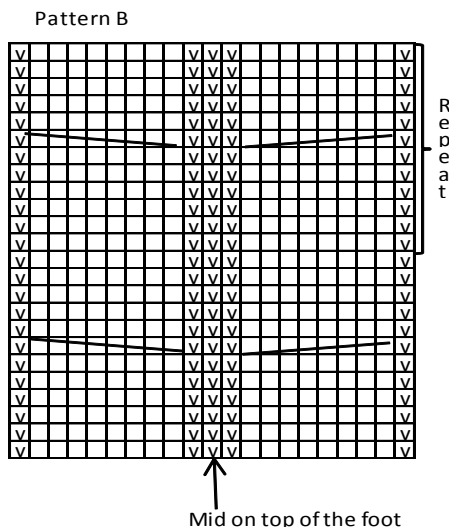
ALTERNATIVE YARN: Viking Nordlys (75% superwash wool , 25% nylon) , 100g ball, Viking Baby ull (100 % merino wool , superwash). Viking Alpaca Fine (85% Alpakka Superfine – 15% highland wool), Viking pure milk fiber (100% milk fiber), 50 g ball

Multiclr, 949 : 1 – 1 – 1 ball

Double pointed needles size 2 ½ and 3 mm – US 1 or 2 and 2 or 3 – UK/Canadian 13 or 12 and 11

Gauge: 28 sts = approx. 10 cm/4 in over St st using needles size 3 mm. **Check your gauge to ensure success.**

Using needles size 2½ mm, cast on 44 – 48 – 52 sts. Work 10 – 10 – 12 cm/4-4-4.7 in in K1,P1 rib. Change to needles size 3 mm, and work 4 rnds in St st. Slip 21 – 23 – 25 sts on cn, and knit heel over rem sts. Work back and forth in St st 4 – 5 – 5 cm/1.8-2-2 in. Dec as foll: Work until 7 – 8 – 8 sts rem, turn, work until 7 – 8 – 8 sts rem, turn, work until 1 st rem before turning, sl 1 st, K1, pssso, turn, work until 1 st rem before turning, P2tog. Cont working in the same way, and rep dec until all side sts are decreased. Pick up 9 – 11 – 11 sts from both sides of the heel = 48 – 54 – 58 sts. Cont working in rnds in patt B over the sts on holder, and in St st with rem sts. Dec 1 st both sides of the heel every 2nd rnd until 44 – 48 – 52 sts rem. When foot measures 14 – 17 – 20 cm/5.5-6.7-7.9 in (or 2 – 2 – 3 cm/0.8-0.8-1.2 in less than desired length of a ready sock), place markers at each side, same number of sts for each side. Dec as foll: Work until 2 sts rem before a marker, K2togtbl, K1, K2tog. Rep dec at both sides every 2nd rnd 3 times, and then every rnd until approx. 8 sts rem. Break yarn, thread through rem sts, and weave in on WS.



□ = Knit on RS, purl on WS

∇ = Purl

□□□□ = Sl 4 sts on cn, and hold to front, K4, knit sts from cn

□□□□ = Sl 4 sts on cn, and hold to back, K4, knit sts from cn

Viking Nordlys

Tunic

1306-24

Size:	4/6	-	8	-	10/12 yrs
Chest:	57	-	63	-	69 cm
	22.4	-	24.8	-	27.2 in
Length:	56	-	61	-	67 cm
	22	-	24	-	26.4 in

ALTERNATIVE YARN: Viking Nordlys (75% superwash wool , 25% nylon) , 100g ball, Viking Baby ull (100 % merino wool , superwash). Viking Alpaca Fine (85% Alpukka Superfine – 15% highland wool), Viking pure milk fiber (100% milk fiber), 50 g ball

Multiclr, 963 2 - 3 - 3 balls

Circular needle size 3 mm – US 2 or 3 – UK/Canadian 11

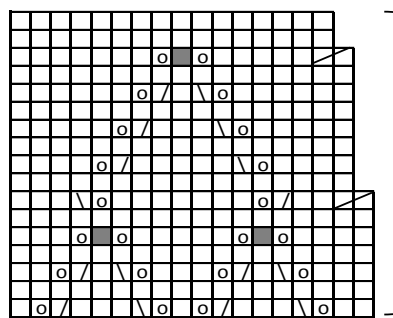
Gauge: 28 sts = approx. 10 cm/4 in over St st using needles size 3 mm. **Check your gauge to ensure success.**

TUNIC

Using needles size 3 mm, cast on 234-252-270 sts. Work 6 rnds in Garter st. Cont working in patt I as charted altog. 4 times in height. Work in patt II as charted. There is now 208-224-240 sts on a rnd. Cont working in rnds in St st. Place 6 markers across the rnd as foll: Note! Place markers between 2 sts. Place markers each side with 104-112-120 sts for both front and back, and 2 marker both front and back inside 34-37-40 sts from each side marker. Cont working in rnds in St st, and dec 1 st both sides of the markers, alt. dec as foll: Dec first at each side, next time dec both sides of 4 markers front and back. Rep dec every 12th rnd altog. 8 times = 160-176-192 sts rem on a rnd. Cont working until work measures approx. 43-47-52 cm/16.9-18.5-20.5 in. Bind off 12 sts at each side (6 both sides of the side markers). Cast on 58-62-70 sts over the bound-off sts (= sleeves) = 252-276-308 sts. Cont working in St st, and dec evenly across number of sts to be 252-276-300 sts. Cont working in rnds in St st, and dec every 12th rnd as foll: *K10, K2tog*, rep *-* across the rnd. Next dec: *K9, K2tog*, rep *-* across the rnd. Rep altog. 3 times, and after that every 6th rnd 4 times = 105-115-125

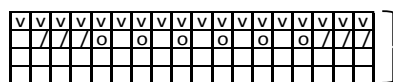
sts on a rnd. Cont working until work measures approx. 15-16-17 cm/5.9-6.3-6.7 in measured from cast-on sts for sleeve. Adjust number of sts to be 90-108-108 sts. Work patt I 3 times in height. Bind off rather loosely. Weave in all ends on WS.

Sleeve edges: Using needles size 3 mm, knit or pick up approx. 66-70-76 sts around armhole. Work approx. 3 cm/1.2 in in Garter st. Bind off. Work same for the other armhole.



Mønster II
Strikkes 1 gang i
høyden.

= Patt II, work once in height



Mønster I = Patt I

□ = rett (r på retten, vr på vrangen)

∇ = vrangt (vr på retten, r på vrangen)

□ = 1 kast

∇ = 2 m vridd rett sammen

□ = 2 m rett sammen

■ = ta 1 m løst av p, strikk 2 m rett sammen, trekk den løse m over = sl

□ = strikk 2 m rett sammen

= K2tog

= knit (knit on RS, purl on WS)

= purl (purl on RS, knit on WS)

= yo

= K2togtbl

= K2tog

1st,
K2tog, pssso

Viking Nordlys

Socks

1306-25

Size: 2/4 - 6/8 - 10/12 yrs

ALTERNATIVE YARN: Viking Nordlys (75% superwash wool , 25% nylon) , 100g ball, Viking Baby ull (100 % merino wool , superwash), Viking Alpaca Fine (85% Alpukka Superfine – 15% highland wool), Viking pure milk fiber (100% milk fiber), 50 g ball

Multiclr, 963: 1 – 1 – 1 ball

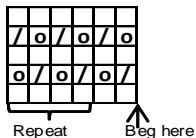
Double pointed needles size 2½ and 3 mm – US 1 or 2 and 2 or 3 – UK/Canadian 13 or 12 and 11

Gauge: 28 sts = approx. 10 cm/4 in over St st using needles size 3 mm. **Check your gauge to ensure success.**

Using needles size 2½ mm, cast on 44 – 48 – 52 sts. Work 8 – 8 – 10 cm/3.1-3.1-4 in in K1,P1 rib. Change to needles size 3 mm. Work in patt A. Slip 21 – 23 – 25 sts on holder, and knit heel over rem sts: Work back and forth 4 – 5 – 5 cm/1.8-2-2 in in St st. Dec as foll: Work until 7 – 8 – 8 sts rem, turn, work until 7 – 8 – 8 sts rem, turn, work until 1 st rem before turning, sl 1 st, K1, pssso, turn, work until 1 st rem before turning, P2tog, Work in the same way, and rep dec until all side sts are decreased. Pick up 9 – 11 – 11 sts both sides of the heel = 48 – 54 – 58 sts. Cont working in rnds in patt B over the sts on holder, and St st over rem sts. Dec 1 st both side of the heel every 2nd rnd until 44 – 48

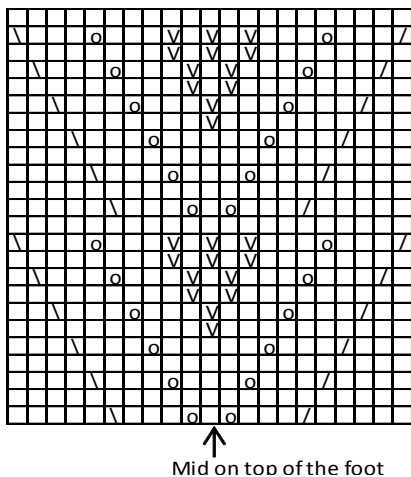
– 52 sts rem. When foot measures 14 – 17 – 20 cm/5.5-6.7-7.9 in (or 2 – 2 – 3 cm/0.8-0.8-1.2 in less than the desired length of a ready sock), place markers each side. Dec as foll: Work until 2 sts rem before a marker, K2togtbl, K1, K2tog. Rep dec at each side every 2nd rnd 3 times, and every rnd until approx. 8 sts rem. Break yarn, thread through rem sts, and weave in on WS.

Pattern A



- = Knit
- = 1yo
- / = K2tog
- ∇ = Sl 1st, K1, pss0

Pattern B



- = nit
- = 1yo
- ∇ = Sl 1st, K1, pss0
- / = K2tog
- ∩ = Purl