

Viking Kid Mohair

Scarf

1304-1

Size 25 X 180 cm
9.8 X 70.9 in

ALTERNATIVE YARN: Viking Kid Mohair (70% kid mohair, 18% merino wool, 12% nylon) 50 g ball, Viking Eco Alpaca (100% alpaca) 100 g skein, Viking Odin (100% wool, superwash), 100 g ball

Light Violet, 967 3 balls

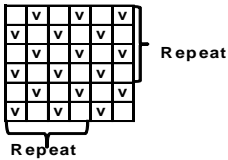
Circular needle size 4½ - US 7 – UK/Canadian 7

Gauge: 18 sts = approx. 10 cm/4 in over St st using needles size 4½ mm. **Check your gauge to ensure success.**

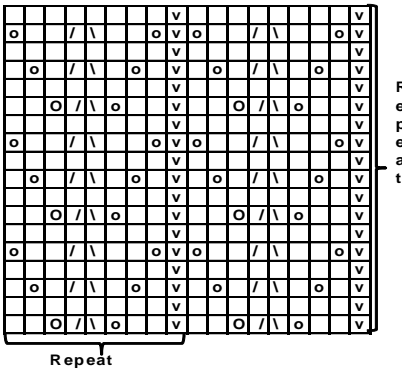
Using needles size 4½ mm, cast on 48 sts. Work 10 rows in Seed st. Cont as foll: Seed st over 10 sts, patt I over 28 sts, and Seed st over 10 sts. Work as established until scarf measures approx. 175 cm/68.9 in (or desired length). End with 10 rows in Seed st. Bind off, knit-sts knitwise, and purl-sts purlwise.

Finishing: Sew short edges together.

Seed st



Pattern I



- = knit on RS, purl on WS
- ◻ = purl on RS, knit on WS
- = 1 yo
- ◻ = Sl 1 st, K1, pss0
- ◻ = K2 tog

Viking Kid Mohair

Cardigan

1304-2

Size:	S	M	L	XL
Bust:	92	100	110	120 cm
	36.2	39.4	43.3	47.2 in
Length:	59	60	62	64 cm
	23.2	23.6	24.4	25.2 in
Sleeve length:	54	55	55	56 cm
	21.3	21.7	21.7	22 in

ALTERNATIVE YARN: Viking Kid Mohair (70% kid mohair, 18% merino wool, 12% nylon), 50 g ball, Viking Eco Alpaca (100% alpaca)100 g skein, Viking Odin (100% wool, superwash), 100 g ball

Light Grey, 913 6 7 7 8 balls

Circular needle size 4½ mm – US 7 – UK/Canadian 7

Gauge: 18 sts = approx. 10 cm/4 in over St st using needles size 4½. **Check your gauge to ensure success.**

Back

Using needles size 4½ mm, cast on 82-90-100-108 sts. Work in Garter st until work measures approx. 39-39-40-41 cm/15.4-15.4-15.7-16.1 in. Bind off at each edge for armhole every 2nd row 1x3, 1x2, and 1x1 st = 70-78-88-96 sts. When work measures approx. 59-60-62-64 cm/23.2-23.6-24.4-25.2, and armhole measures approx. 20-21-22-23 cm/7.9-8.3-8.7-9.1 in, bind off.

Right front

Using needles size 4½ mm, cast on 60-65-70-74 sts (includes 20 sts for ruffled edge). Cont working in Garter st same as for back, but work for the ruffled edge as foll:

1st RS-row: K14, turn, K14.

3rd RS-row: K17 – to avoid holes in the work, pick up 1 st from prev turning point and knit it tog with next st, turn, K17.

5th RS-row: K20 – work same as on 3rd row to avoid holes, turn, K20.

Work 2 rows in Garter st over all sts.

Rep these 8 rows until front measures 39-39-40-41 cm/15.4-15.4-15.7-16.1 in. Bind for armhole same as for back, **and** dec for V-neck inside 20 ruffle edge sts (Note! Cont working for ruffle edge same as before): K20, K2togtbl, knit rem sts. Rep dec every 6 rows altog. 8-9-9-10 times. When work measures same as back, bind off, leaving 20 sts for ruffled edge over holder.

Left front: Work same as for right front, rev all shaping

Sleeves

Using needles size 4½ mm, cast on 62-64-66-68 sts. Work back and forth in Garter st. When work measures approx. 5-5-6-6 cm/2-2-2.4-2.4 in, dec 6 sts evenly across the row. Cont working in Garter st until work measures approx. 10-10-12-12 cm/4-4-4.7-4.7 in measured from cast-on edge. Dec 6 sts evenly across the row. Cont working in Garter st until work measures 16-16-18-18 cm/6.3-6.3-7.1-7.1 in, dec 6 sts evenly across the row = 44-46-48-50 sts rem. When work measures approx. 18-18-20-20 cm/7.1-7.1-7.9-7.9 in, and inc 1 st at each edge approx. every 2½ – 2 – 2 -2 cm/2-0.8-0.8-0.8 in until there is altog. 72-76-80-82 sts on a row. When work measures given length, or as desired, bind off at each edge every 2nd row 1x3, 1x2, and 1x1 st. Bind off rem sts. Sew sleeve seam. Work same for the other sleeve.

Finishing: Sew shoulder seams.

Ruffled collar: Cont working in Garter st with short rows same as before until work measures mid back neck. Bind off, or slip sts on holder. Join mid back collar seam.

Viking Kid Mohair

Sweater

1304-3

Size	S/M	L/XL
Bust:	130	144 cm
	51.2	56.6 in
Length:	60	65 cm
	23.6	25.6 in
Sleeve length:	30	32 cm
	11.8	12.6 in

Hat

Size: Woman

ALTERNATIVE YARN: Viking Kid Mohair (70% kid mohair, 18% merino wool, 12% nylon), Viking Eco Alpaca (100% alpaca) 100 g skein, Viking Odin (100% wool, superwash), 100 g ball

SWEATER

White, 900 7 8
balls

HAT

White, 900 1
ball

Circular needle size 4½ mm – US 7 – UK/Canadian 7
+ 3 buttons

Gauge: 18 sts = approx. 10 cm/4 in over St st using needles size 4½ mm. **Check your gauge to ensure success.**

BACK

Using needles size 4½ mm, cast on 116 – 130 sts. Work 8 rows in Garter st (knit always 1st st). Inc for cable patt: Garter st over 15 – 22 sts, inc 10 sts over next 14 sts = patt A, Garter st over 10 sts, inc 10 sts over next 14 sts = patt A, Garter st over 10 sts, inc 10 sts over next 14 sts = patt A, and end with Garter st over 15 – 22 sts = 156 – 170 sts. Cont working as established. When work measures approx. 40 – 45 cm/15.7-17.7 in, divide work for buttonband after 75 – 82 sts. Finish first right side of back. Cast on 6 sts for buttonband (= worked in Garter st). Cont working until work measures approx. 60 – 65 cm/23.6-25.6 in. Work 1 row over all sts, and dec 10 sts evenly across over each 14 cable sts. Bind off.

Left side: Work same as for right side, but make altog 3 buttonholes to the split edge (= beg of row). Make first buttonhole after 3 cm/1.2 in 2 sts inside the edge. Buttonhole: Bind off 3 sts. Next row: Cast on 3 sts over the bound-off sts. Make rem buttonholes 8 cm/3.1 in spaced apart. Remember to dec over cables.

FRONT

Work same as for back, but without the split. When work measures approx. 55 – 60 cm/21.7-23.6 in, dec 10 sts over 2 mid cables. Next row: Bind off 34 – 38 mid sts. Bind off at neck edge every 2nd row 2x1 st. When front measures same as back, bind off. Work same for the other side, rev all shaping.

SLEEVES

Using needles size 5 mm, cast on 60 – 66 sts. Work back and forth in Garter st, and inc 1 st at each edge every 5 – 4½ cm/2-1.8 in until there is 72 – 80 sts on a row, and sleeve measures approx. 30 – 32 cm/11.8-12.6 in.

Work same for the other sleeve.

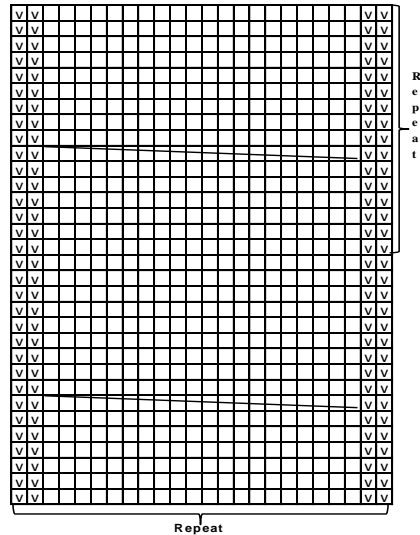
FINISHING

Sew side seams, leaving 20 – 22 cm/7.9-8.7 in for armholes. Sew sleeve seams. Sew on sleeves.

NECK BAND

Beg mid back from split edge. Using needles size 5 mm, pick up approx. 90 – 98 sts. Work 8 rows in Garter st. Bind off.

Pattern A



= R Knit on RS, purl on WS

= V Purl on RS, knit on WS

= Slip 10 sts on cn, hold to front, K10, knit sts from cn

HAT

Using needles size 4½ mm, cast on 100 sts. Work 8 rnds in Garter st. Inc for cable patt as foll: *Garter st over 11 sts, inc 10 sts over next 14 sts = patt A*, rep *-* across the rnd = 140 sts. Cont working as established until work measures approx. 22 cm/8.7 in. Work 1 rnd over all sts, and dec 10 sts over each cable = 100 sts on a rnd. Cont working over all sts, and dec for crown: *K8, K2tog*, rep *-* across the rnd. Rep dec every 2nd rnd with 1 st less between dec until 10 sts rem. Break yarn, and thread through rem sts. Sew a pompon on top.

Viking Kid Mohair

Bolero

1304-4

Size

Woman

ALTERNATIVE YARN: Viking Kid Mohair (70% kid mohair, 18% merino wool, 12% nylon), 50 g ball, Viking Eco Alpaca (100% alpaca), 100 g skein, Viking Odin (100% wool, superwash), 100 g ball

Pink, 966

3 balls

Circular needle size 4½ mm – US 7 – UK/Canadian 7

Gauge: 18 sts = approx. 10 cm/4 in over St st using needles size 4½ mm. **Check your gauge to ensure success.**

Pattern A: *2 rows in Garter st. Next row: **K1, 2 yo**, rep **-* across the row. Knit 1 row and slip down all yarn overs*. Rep *-*.

Beg from left sleeve. Using needles size 4½ mm, cast on 48 sts. Work in rnds approx. 15 cm/5.9 in in K2,P2 rib. Cont working back and forth. Work 2 rows in Garter st, inc on first row 3 sts over first and last 6 sts. Cont working in patt A, and rep inc 3 sts over first and last 6 sts on 1st row of patt A. Cont working in patt A, and inc 1 st at each edge inside 1 selvage st every 1st row of patt (approx. every 2½ cm/1 in) until there is 88 sts on a row, and work measures approx. 48 cm/18.9 in (end with a complete patt A report). Divide work in two, 44 sts for each side. Finish first

right side. Cont working back and forth, and inc 1 st beg of every first row of patt A, altog 5 times (neck edge measures approx. 10 cm/4 in). There is now 49 sts on a row. Cont working back and forth, but **dec** 1 st inside selvage st beg of each first row of patt A, altog. 5 times. There is now 44 sts on a row. Slip sts on holder. Work same for the other side, rev all shaping.

Take both sides on same needle, and cont working back and forth over all sts. Work in patt A, dec 1 st at each edge inside selvage st every 1st row of patt (approx. every 2½ cm/1 in) until 62 sts rem, and work measures approx. 31 cm/12.2 in. End with a complete patt A report, **but** on last row dec 1 st at each edge inside 1 selvage st. Dec 3 sts over first and last 6 sts. Work 2 rows in Garter st. Dec 3 sts over first and last 6 sts = 48 sts rem. Work in rnds approx. 15 cm/5.9 in in K2,P2 rib. Bind off in rib.

Viking Kid Mohair

Vest

1304-5

Size:	XS/S	M	L	XL
Bust:	88	96	105	112 cm
	34.6	38.8	41.2	44.1 in
Length:	74	74	76	76 cm
	29.1	29.1	29.9	29.9 in

ALTERNATIVE YARN: Viking Kid Mohair (70% kid mohair, 18% merino wool, 12% nylon), 50 g ball, Viking Eco Alpaca (100% alpaca) 100 g skein, Viking Odin (100% wool, superwash), 100 g ball

Grey, 915 ca 2 3 3 4 balls

Circular needle size 4½ and 6 mm – US 7 and 10 – UK/Canadian 7 and 4

Gauge: 15 sts = approx. 10 cm/4 in over patt with needles size 6 mm. 18 sts = approx. 10 cm/4 in over St st using needles size 4½ mm. **Check your gauge to ensure success.**

Lace patt:

1st row, RS: K3, *1 yo – K2tog*, rep *-* across the row until 3 sts rem, K3
2nd row WS: Work same as for 1st row.

Back (work back and front separately):

Using needles size 6 mm, cast on 66-72-78-84 sts. Knit 1 row. Cont working in lace patt. When work measures approx. 74-74-76-76 cm/29.1-29.1-29.9-29.9 in, knit 1 row over all sts. Bind off.

Front:

Work same as for back. When work measures 52-52-53-53 cm/20.5-20.5-20.9-20.9 in, bind off 2 mid sts. Finish each side separately. Note! Knit 1 st at split edge every row (= selvage st), work rem sts in lace patt.

Right front: When work measures approx. 66-66-68-68 cm/26-26-26.8-26.8 in, bind off at neck edge every 2nd row 1x6, 1x3, 1x2, and 1x1 st. When front measures same as back, knit 1 row, and bind off.

Work same for the other side, rev all shaping.

Finishing: Sew shoulder seams. Sew side seams, and leave approx. 20 cm/7.9 in splits each side, and approx. 22-22-23-23 cm/8.7-8.7-9.1-9.1 in for armholes.

Armhole edges: Beg mid under arm. Using needles size 4½ mm, pick or knit up approx. 70-70-74-74 sts around armhole. Work back and forth 6 rows in Garter st. Bind off. Work same for the other armhole. Sew armhole edge seams.

Viking Kid Mohair

Vest

1304-6

Size:	S	M	L	XL
Bust:	approx. 89	97	107	116 cm
	35	38.2	42.2	45.7 in
Length:	approx. 60	60	62	62 cm
	23.6	23.6	24.4	24.4 in

ALTERNATIVE YARN: Viking Kid Mohair (70% kid mohair, 18% merino wool, 12% nylon), Viking Eco Alpaca (100% alpaca) 100 g skein, Viking Odin (100% wool, superwash), 100 g ball

Light Turquoise, 929 3 3 4 4 balls

Circular needle size 4½ mm – US 7 – UK/Canadian 7

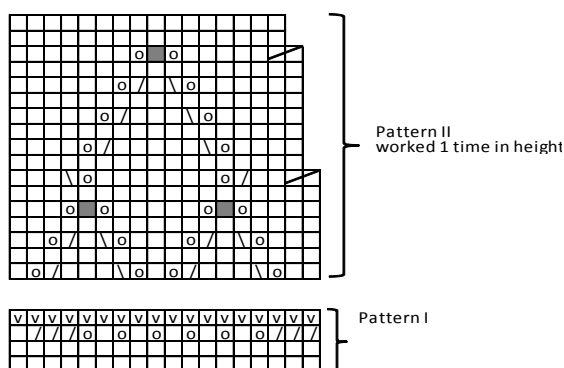
Gauge: 18 sts = approx. 10 cm/4 in over St st using needles size 4½ mm. **Check your gauge to ensure success.**

VEST

Using needles size 4½ mm, cast on 181-199-217-235 sts. Work 4 rows in Garter st. Cont working back and forth in patt I as charted, rep altog. 4 times in height. Work in patt II as charted. There is now 161-177-193-209 sts on a row. Cont working back and forth in St st until work measures approx. 40-40-41-41 cm/15.7-15.7-16.1-16.1 in. Place markers each side, 83-91-99-107 sts for back, and 39-43-47-51 sts for each front. Bind off at 12 sts each side (6 sts on both sides of the markers).

Cast on 36-38-42-44 sts over bound-off sts (= sleeves) = 209-229-253-273 sts. Purl 1 row. Work 4 rows in St st, and dec on 4th row (= WS) evenly across number of sts to be 199-217-235-253 sts. Cont working back and forth in patt II as charted (= 177-193-209-225 sts). Adjust number of sts to be 173-187-201-215 sts. Cont working back and forth in St st, and dec on RS as foll: K5, *K2tog – K5*, rep *-* across the row, end with K5. Work 7 rows in St st, and dec on RS as foll: K4, *K2tog – K4*, rep *-* across the row, end with K4. Rep dec on every 8th row with 1 st less between dec altog. 4-4-4-4 times = 77-83-89-95 sts. Cont working until armhole measures approx. 19-20-21-22 cm/7.5-7.9-8.3-8.7 in (measured from bound-off sts). Adjust evenly across next row number of sts to be 73-73-91-91 sts. Work patt I 3 times in height. Bind off.

Front bands: Pick or knit up along right edge approx. 109 sts (same for all sizes). Note! Number of sts must be multiple with 18 + 1 sts. Work back and forth in patt I, rep once in height. Bind off rather loosely. Work same for left front band. Weave in all ends on WS.



- = knit (knit on RS, purl on WS)
- ▣ = purl (purl on RS, knit on WS)
- ⊙ = 1 kast
- ▤ = K2togtbl
- ▥ = K2tog
- = sl 1 st, K2tog, pssso
- ▧ = K2tog

Viking Kid Mohair

Tunic

1304-7

Size:	XS	S	M	L	XL
Bust:	72	80	90	98	107 cm
	28.3	31.5	35.4	38.6	42.2 in
Length:	77	80	81	82	84 cm
	30.3	31.5	31.9	32.3	33.1 in

ALTERNATIVE YARN: Viking Kid Mohair (70% kid mohair, 18% merino wool, 12% nylon), 50 g ball, Viking Eco Alpaca (100% alpaca) 100 g skein, Viking Odin (100% wool, superwash), 100 g ball

Offwhite, 915 4 4 5 5 6 balls

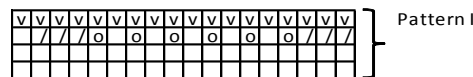
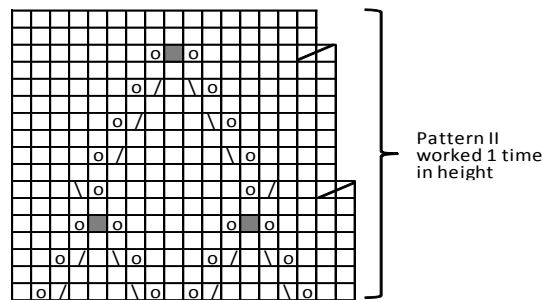
Circular needle 4½ mm – US 7 – UK/Canadian 7

Gauge: 18 sts = approx. 10 cm/4 in over St st using needles size 4½ mm. **Check your gauge to ensure success.**

TUNIKA

Using needles size 4½ mm, cast on 198-216-234-252-270 sts. Work 6 rows in Garter st. Work in patt I altog. 4 times in height. Work in patt II as charted. There is 176-192-208-224-240 sts on a rnd. Cont working in rnds in St st until work measures approx. 24-24-25-25-26 cm/9.4-9.4-9.8-9.8-10.2 in. Place 6 markers as foll: Note! Place markers between 2 sts. Place markers each side with 88-96-104-112-120 sts for back and front, and another 2 markers both back and front 29-32-34-37-40 sts **inside** both side markers. Cont working in rnds in St st, and dec 1 st both side of the markers as foll: First dec rnd: Dec 1 st both sides of the markers. Second dec rnd: Dec 1 st both sides of 4 markers on front and back. Rep dec every 12th rnd altog. 8 times = 128-144-160-176-192 sts on a rnd. Cont working until work measures approx. 58-60-60-60-62 cm/22.8-23.6-23.6-23.6-24.4 in. Bind off 12 sts at each side (6 sts both sides of the side markers). Cast on 36-38-42-44-46 sts over the bound-off sts (= sleeves) = 176-196-220-240-260 sts. Work 4 rnds in St st and dec evenly across number of sts to be 162-180-216-234-252 sts. Work patt II as charted. When patt II is ready, there is 144-160-192-208-224 sts on a rnd. Cont working in rnds in St st, and dec evenly across first rnd number of sts to be 140-154-189-203-217 sts. Cont working in rnds in St st, and dec every 8th rnd as foll: *K5, K2tog*, rep *-* across the rnd. Next dec rnd: *K4, K2tog*, rep *-* across the rnd. Rep dec with 1 st less between each dec until 80-88-81-87-93 sts rem. When armhole measures approx. 19-20-21-22-22 cm/7.5-7.9-8.3-8.7-8.7 in, adjust number of sts to be 72-72-90-90-90 sts. Work patt I 3 times in height. Bind off rather loosely.

Weave in all ends on WS.



- = knit (knit on RS, purl on WS)
- ▣ = purl (purl on RS, knit on WS)
- = 1 yo
- ▤ = K2togtl
- ▥ = K2tog
- = sl 1 st, K2tog, pssso
- ▧ = K2tog

Viking Kid Mohair

Necklet

1304-8

Size	Woman
Bust:	130 cm
	51.2 in
Length:	25 cm
	9.8 in

ALTERNATIVE YARN: Viking Kid Mohair (70% kid mohair, 18% merino wool, 12% nylon), 50 g ball, Viking Eco Alpaca (100% alpaca) 100 g skein, Viking Odin (100% wool, superwash), 100 g ball

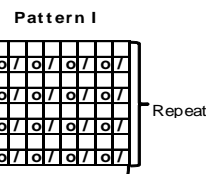
Pink, 966

1 ball

Circular needle size 4½ mm – US 7 – UK/Canadian 7

Gauge: 18 sts = approx. 10 cm/4 in over St st using needles size 4½ mm. **Check your gauge to ensure success.**

Using needles size 4½ mm, cast on 178 sts. Work 4 rnds in Garter st. Work in rnds in patt I until work measures approx. 24 cm/9.4 in. Work 4 rnds in Garter st. Bind off.



- = Knit
- ▤ = K2tog
- = 1 yo

Viking Kid Mohair

Necklet with cables

1304-9

Size 20 X 170 cm
7.9 X 67 in

ALTERNATIVE YARN: Viking Kid Mohair (70% kid mohair, 18% merino wool, 12% nylon), Viking Eco Alpaca (100% alpaca) 100 g skein, Viking Odin (100% wool, superwash), 100 g ball

Cherry, 963

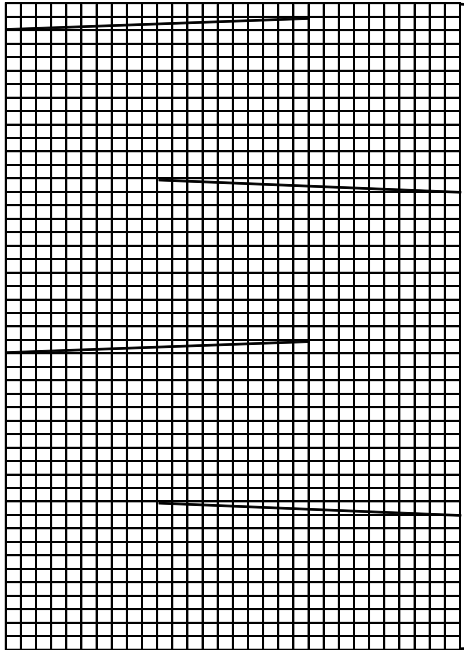
2 balls

Circular needle size 4½ mm – US 7 – UK/Canadian 7

Gauge: 18 sts = approx. 10 cm/4 in over St st using needles size 4½ mm. **Check your gauge to ensure success.**

Using needles size 4½ mm, cast on 50 sts. Work as foll: Garter st over 10 sts, patt over 30 sts, Garter st over 10 sts. Cont working back and forth as established until work measures approx. 170 cm/67 in (or you have finished both balls of yarn). Bind off.

Finishing: Join short edges.



☐ = Knit on RS, purl on WS

▬ = Slip 10 sts on cn, hold to front, K10, knit sts from cn

▬ = Sl 10 sts on cn, hold to back, K10, knit sts from cn

Viking Kid Mohair

Shoulder warmer

1304-10

Size	S	M	L
Width, shoulders:	100	110	120 cm
	39.4	43.3	47.2 in

ALTERNATIVE YARN: Viking Kid Mohair (70% kid mohair, 18% merino wool, 12% nylon) 50 g ball, Viking Eco Alpaca (100% alpaca) 100 g skein, Viking Odin (100% wool, superwash), 100 g ball

Dark Violet, 968

1

2

2 balls

Circular needle size 4½ mm – US 7 – UK/Canadian 7

Gauge: 18 sts = approx. 10 cm/4 in over St st using needles size 4½ mm. **Check your gauge to ensure success.**

Using needles size 4½ mm, cast on 180 – 196 – 216 sts. Work back and forth in Garter st. When work measures approx. 25 cm/9.8 in, work 3 cm/1.2 in K2,P2 rib. Bind off in rib.

Finishing: Sew short edges tog.

Viking Kid Mohair

Shawl

1304-11

Size 66 X 220 cm
26 X 86.6 in

ALTERNATIVE YARN: Viking Kid Mohair (70% kid mohair, 18% merino wool, 12% nylon), 50 g ball, Viking Eco Alpaca (100% alpaca) 100 g skein, Viking Odin (100% wool, superwash), 100 g ball

Beige, 907

5 balls

Circular needle size 4½ mm – US 7 – UK/Canadian 7

Gauge: 18 sts = approx. 10 cm/4 in over St st using needles size 4½ mm. **Check your gauge to ensure success.**

Using needles size 4½ mm, cast on 112 sts. Work in K4,P4 rib until work measures 220 cm/86.6 in. Bind off in rib.

Viking Kid Mohair

Sweater

1304-12

Size	S	M	L
Bust:	110	120	130 cm
	43.3	47.2	51.2 in
Length:	42	45	48 cm
	16.5	17.7	18.9 in
Sleeve length:	12	15	15 cm
	4.7	5.9	5.9 in

ALTERNATIVE YARN: Viking Kid Mohair (70% kid mohair, 18% merino wool, 12% nylon), 50 g ball, Viking Eco Alpaca (100% alpaca), 100 g skein, Viking Odin (100% wool, superwash), 100 g ball

Pink, 966

5

5

6 balls

Circular needle size 4½ mm – US 7 – UK/Canadian 7

Gauge: 18 sts = approx. 10 cm/4 in over St st using needles size 4½ mm. **Check your gauge to ensure success.**

Pattern A, worked back and forth:

1st row: (after rib) *RS: K1 below (see photo 1, don't slip the st on RH needle), K1tfl (see photos 2 and 3), so that you have 1 yo + 1 st over the needle*, rep *-* across the row.

2nd row: Knit (knit 1 st + 1 yo, K2).

3rd row: *K1 below, K1tbl (= 1 yo + 1 st), K1*, rep *-* across the row.

4th row: Knit (K1, Ktog 1 st + 1 yo).

Rep 1st-4th row.

PATTERN A

Photo 1:



= knit from purl-st below

Photo 2:



= draw yarn through

Photo 3



= sl sts on RH needle = 1 st + yo

Using needles size 4½ mm, cast on 98 – 108 – 116 sts. Work back and forth 2 cm/0.8 in in K1,P1 rib. Cont working in patt A inside selvage sts (= knit every row). When work measures approx. 37 – 40 – 42 cm/14.6-15.7-16.5 in, bind off 16 – 18 – 18 mid sts. Finish each side separately. Bind off at neck edge every 2nd row 1x3, 1x2, and 1x1 st. Cont working until work measures 42 – 45 – 48 cm/16.5-17.7-18.9 in. Slip sts on holder. Work same for the other side, rev all shaping (end with 4th row off patt A).

Front is now ready, and you can cont over to back. Work as foll: Work 35 – 39 – 43 sts (= left shoulder), cast on 28 – 30 – 30 sts (= neck edge, back) and 35 – 39 – 43 sts (= right shoulder). Work WS row, **but** work K1,P1 rib over 28 – 30 – 30 neck edge sts. Cont working in patt A over all sts until work measures 2 cm/0.8 in less than front. Work 2 cm/0.8 in in K1,P1 rib. Bind off in rib.

Sleeves: Using needles size 4½ mm, cast on 104 – 112 – 120 sts. Work in K4,P4 rib until sleeve measures 12 – 14 – 15 cm/4.7-5.5-5.9 in. Bind off in rib.

Collar: Beg from left shoulder. Using needles size 4½ mm, pick or knit up approx. 80 – 80 – 88 sts. Knit 1 rnd, and inc evenly across number of sts to be 78 – 84 – 90 sts. Work in K3,P3 rib. When collar measures approx. 5 cm/2 in, inc 1 st to every 3rd st. Cont working in K4,P4 rib until work measures approx. 28 cm/11 in. Bind off in rib.

Finishing: Sew side seams, and leave 20 – 22 – 24 cm/7.9-8.7-9.4 in openings for armholes. Sew on sleeves.

Viking Kid Mohair

Poncho

1304-13

Size	Woman
Width, lower edge:	148 cm
	58.3 in
Length, mid front:	70 cm
	27.6 in

ALTERNATIVE YARN: Viking Kid Mohair (70% kid mohair, 18% merino wool, 12% nylon) 50 g ball, Viking Eco Alpaca (100% alpaca) 100 g skein, Viking Odin (100% wool, superwash), 100 g ball

Dark Violet, 968

5 balls

Circular needle size 4½ mm – US 7 – UK/Canadian 7

Gauge: 18 sts = approx. 10 cm/4 in over St st using needles size 4½ mm. **Check your gauge to ensure success.**

Using needles size 4½ mm, cast on 264 sts. Work 8 rnds in Garter st. Place markers each side, and around mid front and back sts = 65 sts for each part + mid sts. Beg from mid back, and cont working in Garter st: Knit 6 sts, turn, knit 11 sts. Turn, and knit after each turning 5 sts more until you have reached the side markers. Break yarn.

Beg from mid front, Knit 11 sts, turn, knit 21 sts. Turn, and knit after each turning 11 sts more until you have reached the side markers. Back is longer than front.

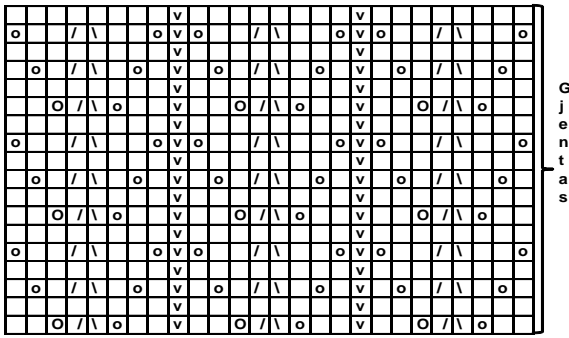
Beg 9 sts before left side marker, and work I rnds as foll: *St over 18 sts, patt I over 26 sts*, rep *-* 6 times. Cont working as established, and dec 1 st in each St st-panel every 5 cm/2 in until 198 sts rem, and work measures approx. 60 cm/23.6 in, measured mid front. Cont working in rnds in Garter st. Dec evenly across 1st rnd number of sts to be 190 sts. Work 4 rnds. Beg dec for yoke: *K8, K2tog*, rep *-* across the rnd. Rep dec every 4th rnd with 1 st less between each dec altog. 5 times = 95 sts on a rnd. Work 40 rnds in Garter st. Bind off rather loosely.

Finishing: Fold edge on WS and sew to the 10th rill. Twist approx. 100 cm/39.4 in cord, and fasten pompons to each end.

Hood: Using needles size 4½ mm, cast on 80 sts. Work 12 rows in Garter st. Inc evenly across last row number of sts to be 90 sts. Work as foll: Garter st over 6 sts, patt I over 26 sts, St st over 26 sts (place a marker after 13 sts = mid back), patt I and end with Garter st over 6 sts. Cont working back and forth as established. Inc 1 st both sides of the marker after 6 rows. Rep inc every 6th row 5 times, and then every 4th row until there is 110 sts on a row. **Dec** 1 st both sides of the marker every 2nd row until approx. 100 sts rem, and hood measures approx. 35 cm/13.8 in. Join top seam.

Sew hood inside neck edge.

Pattern I



- = knit on RS, purl on WS
- = purl on RS, knit on WS
- = 1 yo
- = Sl 1 st, K1, pss0
- = K2tog

Viking Kid Mohair

Wristwarmers and hat 1304-14

Size Woman
 Hat, circumference: 56 cm
22 in

ALTERNATIVE YARN: Viking Kid Mohair (70% kid mohair, 18% merino wool, 12% nylon) 50 g ball, Viking Eco Alpaca (100% alpaca) 100 g skein, Viking Odin (100% wool, superwash), 100 g ball

Light Violet, 967 1 ball
 Circular needle size 4½ mm – US 7 – UK/Canadian 7
Gauge: 18 sts = approx. 10 cm/4 in over St st using needles size 4½ mm. **Check your gauge to ensure success.**

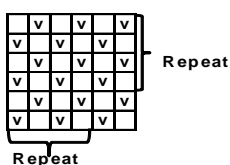
HAT

Using needles size 4½ mm, cast on 99 sts. Work 5 rnds in Seed st as charted. Work 1 rnd in St st. Cont working in patt I. When work measures approx. 20 cm/7.9 in, beg crown dec: Divide sts into 9 panels. *Work Seed st over 9 sts, K2tog*, rep *-* across the rnd. Always knit the dec st. Rep dec every 2nd rnd with 1 st less between each dec until 9 sts rem. Break yarn, and thread through rem sts.

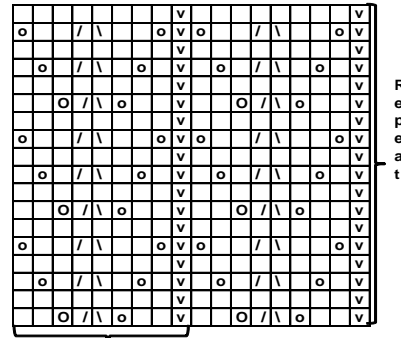
WRISTWARMERS

Using needles size 4 ½ mm, cast on 45 sts. Work 5 rnds in Seed st as charted. Work 1 rnd in St st. Work in patt as charted until work measures approx. 14 cm/5.5 in. Work 5 rnds in Seed st. Bind off knit-sts knitwise, and purl-sts purlwise. Work same for the other wristwarmer.

Seed st



Pattern I



- = knit on RS, purl on WS
- = purl on RS, knit on WS
- = 1 yo
- = Sl 1 st, K1, pss0
- = K2tog

Viking Kid Mohair

Scarf 1304-15

Size 25 X 180 cm
9.8 X 70.9 in

ALTERNATIVE YARN: Viking Kid Mohair (70% kid mohair, 18% merino wool, 12% nylon), 50 g ball, Viking Eco Alpaca (100% alpaca), 100 g skein, Viking Odin (100% wool, superwash), 100 g ball

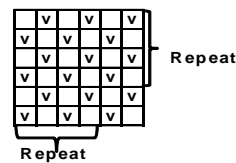
Light Violet, 967 2 balls

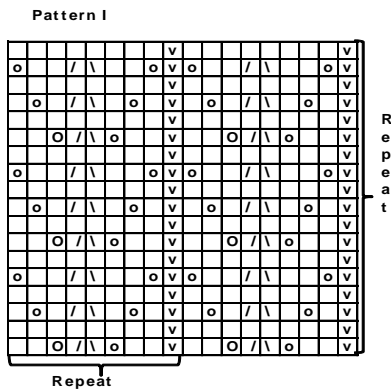
Circular needle size 4½ mm – US 7 – UK/Canadian 7

Gauge: 18 sts = approx. 10 cm/4 in over St st using needles size 4½ mm. **Check your gauge to ensure success.**

Using needles size 4½ mm, cast on 46 sts. Work 10 rows in Seed st. Cont working in patt as foll: Seed st over 9 sts, patt I over 28 sts and Seed st over 9 sts. Cont working as established until scarf measures approx. 175 cm/68.9 in. End with 9 rows in Seed st. Bind off, knit-sts knitwise and purl-sts purlwise.

Seed st





- = knit on RS, purl on WS
- ▤ = purl on RS, knit on WS
- = 1 yo
- ▨ = Sl 1 st, K1, pssso
- ▧ = K2tog

Viking Kid Mohair

Cardigan

1304-16

Size:	S	M	L	XL	XXL
Bust:	85	91	100	110	120 cm
	33.5	35.8	39.4	43.3	47.2 in
Length:	59	60	61	61	61 cm
	23.2	23.6	24	24	24 in
Sleeve length:	48	48	50	50	52 cm
	18.9	18.9	19.7	19.7	20.5 in

ALTERNATIVE YARN: Viking Kid Mohair (70% kid mohair, 18% merino wool, 12% nylon), 50 g ball, Viking Eco Alpaca (100% alpaca) 100 g skein, Viking Odin (100% wool, superwash), 100 g ball

Black, 903 5 5 6 6 7 balls

Circular needle and double pointed needles size 4½ mm – US 7 – UK/Canadian 7

+ 6 buttons

Gauge: 18 sts = approx. 10 cm/4 in over St st using needles size 4½ mm. **Check your gauge to ensure success.**

CARDIGAN

Using needles size 4½ mm, cast on 153-163-181-199-217 sts. Work back and forth approx. 3 cm/1.2in in K1,P1 rib. Place markers each side with 79-85-93-103-111 sts for back, and 37-39-44-48-53 sts for both fronts. Cont working back and forth in St st. When work measures approx. 38-38-38-37-36 cm/15-15-15-14.6-14.2 in, divide work at sidemarkers. Finish back and fronts separately.

Back

Cont working back and forth until work measures given length, and armhole measures approx. 21-22-23-24-25 cm/8.3-8.7-9.1-9.4-9.8 in. Bind off.

Right front

Work same as for back. When work measures approx. 52-53-54-54-54 cm/ 20.5-20.9-21.3-21.3-21.3 in, bind off 9-9-9-10-10 sts beg of RS row for neck edge. Bind off at neck edge every 2nd row 1x3, 1x2, and 1x1 st. When front measures same as back, bind off.

Work same for left front, rev all shaping.

Sleeves

Using needles size 4½ mm, cast on 41-43-45-47-49 sts. Work in

rnds 3 cm/1.2 in in K1,P1 rib. Cont working in St st, and place a marker mid under sleeve. Inc 1 st both sides of the marker approx. every 2 ½ -2 ½ -2-2-2 cm/1-1-0.8-0.8 in. When work measures the given length, and there is 75-79-83-87-91 sts on a rnd. Bind off. Work same for the other sleeve.

Finishing

Join shoulder seams.

Left front band: Using needles size 4½ mm, pick or knit up approx. 95-97-101-101-101 sts along front edge. Work back and forth 3 cm/1.2 in in K1,P1 rib. Bind off in rib. Place markers for 6 buttons. First on approx. 3 cm/1.2 in from the lower edge, and last approx. 2 cm/0.8 in from upper edge, and rest evenly spaced apart.

Right front band: Work same as left front, but make buttonholes mid front band. Buttonhole: Bind off 2 sts. Next row: Cast on 2 sts over the bound-off sts.

Collar

Using needles size 4½ mm, pick or knit up approx. 74-76-76-78-80 sts around neck edge (Note! Also from front bands). Work Garter st over first and last 4 sts, and St st over rem sts. Place markers mid back, and over each shoulder. Inc 1 st both sides of the markers. Rep inc every 2nd row. When work measures approx. 8 cm/3.1 in, work 6 rows Garter st over all sts (no inc). Bind off rather loosely.

Viking Kid Mohair

Sweater

1304-17

Size:	S	M	L
Bust:	107	116	124 cm
	42.2	45.7	48.8 in
Length:	62	65	68 cm
	24.4	25.6	26.8 in
Sleeve length:	46	48	48 cm
	18.1	18.9	18.9 in

ALTERNATIVE YARN: Viking Kid Mohair (70% kid mohair, 18% merino wool, 12% nylon), 50 g ball, Viking Eco Alpaca (100% alpaca) 100 g skein, Viking Odin (100% wool, superwash), 100 g ball

Light Grey, 913 3 4 4 balls
Dark Grey, 915 3 3 4 balls

Circular needle size 4½ mm – US 7 – UK/Canadian 7

Gauge: 18 sts = approx. 10 cm/4 in over St st using needles size 4½ mm. **Check your gauge to ensure success.**

BACK

Using needles size 4½ mm and light grey yarn, cast on 96 – 104 – 112 sts. Work back and forth in patt (always knit 1st st) until back measures 62 – 65 – 68 cm/24.4-25.6-26.8 in. Bind off, knit-sts knitwise, purl-sts purlwise.

FRONT

Work same as for back. When work measures approx. 56 – 59 – 62 cm/22-23.2-24.4 in, bind off 18 – 20 – 22 mid sts. for neck edge. Finish each side separately. Bind off at neck edge every 2nd row 4x1 st. When front measures same as back, bind off.

SLEEVES

Using needles size 4½ mm and dark grey yarn, cast on 48 – 54 – 54 sts. Work 5 cm/2 in in K3,P3 rib. Inc 1 st to each knit and purl panel, and cont working in patt A as charted. Place a marker beg of patt A = mid under sleeve. Inc 1 st each side of the marker approx. every 3 – 3½ – 2½ cm/1.2-1.4-2 in until there is 90 – 96

– 102 sts on a rnd, and sleeve measures approx. 46 – 48 – 48 cm/18.1-18.9-18.9 in. Bind off, knit-sts knitwise, purl-sts purlwise.

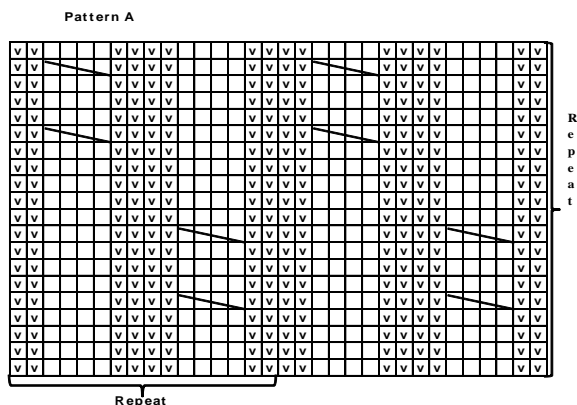
FINISHING

Sew side seams leaving for armholes 25 – 26 – 28 cm/9.8-10.2-11 in openings.

COLLAR

Beg from left shoulder. Using needles size 4½ mm and dark grey yarn, knit or pick up approx. 56 – 64 – 72 sts. Purl 1 row WS, and cont working in St st. Inc evenly across 4th rnd number off sts to be 112 – 118 – 124 sts. When work measures approx. 20 cm/7.9 in, bind off.

Sew on sleeves.



- = knit on RS, purl on WS
- = purl on RS, knit on WS
- = S12 sts on en, hold to front, K2, knit sts from cn

Viking Kid Mohair

Head band and scarf 1304-18

Size Woman

Length, scarf: 200 cm

78.8 in

ALTERNATIVE YARN: Viking Kid Mohair (70% kid mohair, 18% merino wool, 12% nylon), 50 g ball, Viking Eco Alpaca (100% alpaca), 100 g skein, Viking Odin (100% wool, superwash), 100 g ball

Navy Blue, 926 3 balls

Circular needle 30 cm/11.8 in, size 4½ mm – US 7 –

UK/Canadian 7

+ 2 buttons

Gauge: 18 sts = approx. 10 cm/4 in over St st using needles size 4½ mm. **Check your gauge to ensure success.**

HEAD BAND

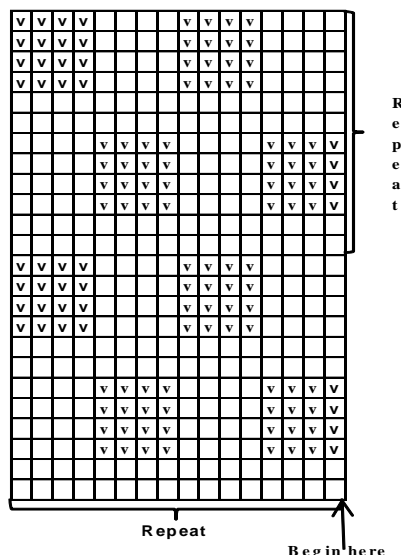
Using needles size 4½ mm, cast on 96 sts. Work 4 rnds in K1,P1 rib. Cont working in patt A until work measures approx. 16 cm/6.3 in. End with 2 rnds in St st, and 4 rnds in K1,P1 rib. Bind off in rib.

Finishing : Sew ribbed edges tog from WS. Sew on 2 buttons for embellishment.

SCARF

Using needles size 4½ mm, cast on 56 sts. Work in rnds 3 cm/1.2 in in K1,P1 rib. Cont working in patt A until work measures approx. 197 cm/77.6 in. End with 2 rnds in St st, and 3 cm/1.2 in in K1,P1 rib. Bind off in rib.

Pattern A



- = Knit on RS, purl on WS
- = Purl on RS, knit on WS

Viking Kid Mohair

Shawl

1304-19

Size

Woman

ALTERNATIVE YARN: Viking Kid Mohair (70% kid mohair, 18% merino wool, 12% nylon), 50 g ball, Viking Eco Alpaca (100% alpaca), 100 g skein, Viking Odin (100% wool, superwash), 100 g ball

Viking Kid Mohair Blue, 926

2 balls

Chicago Blue, 459

4 balls

Circular needle and double pointed needles size 7 mm – US 10½ – UK/Canadian 2

Gauge: 12 sts = approx. 10 cm/4 in over St st using needles size 7 mm. **Check your gauge to ensure success.**

Note! Shawl is worked with double yarn

Beg from upper edge

Using needles size 7 mm, cast on 4 sts. Knit 2 rows. Work next 6 rows as foll:

1st row = RS: K1 – 1 yo – K2 (= mid) – 1 yo – K1 = 6 sts

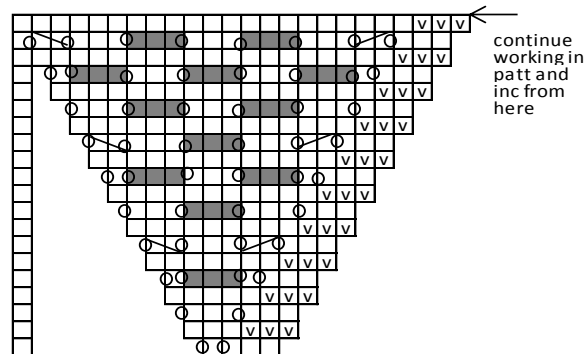
2nd row = WS: Knit, but purl 2 mid sts

3rd row = RS: K2 – 1 yo – K2 – 1 yo – K2 = 8 sts

4th and 6th row = WS: same as 2nd row

5th row = RS: K3 – 1 yo – K2 – 1 yo – K3 = 10 sts.

Cont working in patt as charted. Note! When chart is ready, cont inc 1 st every 2nd row inside 3 Garter sts at each side, and 1 st both sides of 2 mid sts (= 4 inc sts). Same time, cont working in same patt as before between inc. When work measures approx. 60 cm/23.6 in, measured mid back (Note! Take care that there is enough yarn for edge and binding off. Work 6 rows in Garter st over all sts and cont repeating inc at each side and mid back. Bind off rather loosely.



- = mid work patt in reverse on the other side
- = knit (knit on RS, purl on WS)
 - = purl (purl on RS, knit on WS)
 - = 1 kast
 - = sl 1 st, K2tog, pssso
 - = K2tog
 - = K2togtbl

Viking Kid Mohair

Long vest 1304-20

Size	S/M	L
Bust:	92	108 cm
	36.2	42.5 in
Length:	90	100 cm
	35.4	39.4 in

ALTERNATIVE YARN: Viking Kid Mohair (70% kid mohair, 18% merino wool, 12% nylon), 50 g ball, Viking Eco Alpaca (100% alpaca) 100 g skein, Viking Odin (100% wool, superwash), 100 g ball
Navy Blue, 926 6 balls

Circular needle, size 4½ mm – US 7 – UK/Canadian 7
+ 2 buttons

Gauge: 18 sts = approx. 10 cm/4 in over St st using needles size 4½ mm. **Check your gauge to ensure success.**

BACK

Using needles size 4½ mm, cast on 88 – 104 sts. Work back and forth 4 cm/1.6 in in K1,P1 rib. Cont working in patt A as charted. When back measures approx. 90 – 100 cm/35.4-39.4 in, end with one complete square, bind off.

FRONT

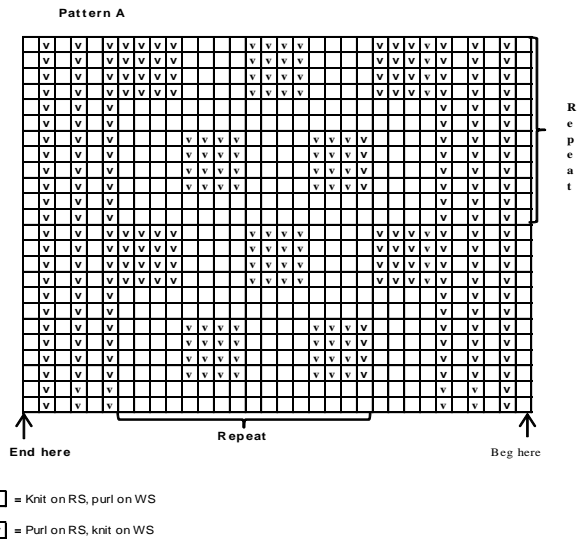
Work same as for back. When work measures approx. 60 – 65 cm/23.6-25.6 in, divide work for buttonband after 40 – 48 sts. Cast on 8 new sts (work these sts in K1,P1 rib = buttonband), and cont working back and forth. When work measures approx. 75 – 80 cm/29.5-31.5 in, beg dec for V-neck: Work 37 – 45 sts, K2tog, K1, rib over last 8 sts. Rep dec end of every 2nd row (each RS row) 15 – 20 times. When work measures same as back, bind off leaving front band sts on holder.

Right front: Work same as for left front, but beg with rib over 8 sts, **but** after approx. 7½ cm/3 in, make a buttonhole (= bind off 3 sts, next row: cast on 3 sts over the bound-off sts) inside 3 sts. Make another buttonhole when work measures approx. 75– 80 cm/29.5-31.5 in. Beg at **same time** dec for V-neck. Work as foll:

rib over 8 sts, K1, sl next st, K1, pssso, work rem sts. Work same as for left side.

FINISHING

Join shoulder seams. Slip 8 sts for left shoulder over needles size 4½ mm, and cont working in rib until work reaches mid back neck. Bind off. Slip sts for right shoulder over needles size 4½ mm, and work in rib until work measures mid back neck. Bind off.
Sew mid back seam, and sew neck band along neck edge.



Viking Kid Mohair

Necklet and wristwarmers 1304-21

Size	Woman
------	-------

ALTERNATIVE YARN: Viking Kid Mohair (70% kid mohair, 18% merino wool, 12% nylon) 50 g ball, Viking Eco Alpaca (100% alpaca), 100 g skein, Viking Odin (100% wool, superwash), 100 g ball

White, 900 2 balls

Circular needle size 4½ mm – US 7 – UK/Canadian 7
+ 11 buttons

Gauge: 18 sts = approx. 10 cm/4 in over St st using needles size 4½ mm. **Check your gauge to ensure success.**

NECKLET

Using needles size 4½ mm, cast on 108 sts. Work in K4,P4 rib. When work measures approx. 30 cm/11.8 in, bind off in rib.
Finishing: Place 12 sts mid front over each other, and sew necklet tog with 3 buttons (see photo), first button 12 cm/4.7 in from upper edge, last one 2 cm/0.8 in from lower edge, and one between them.

WRISTWARMERS

Using needles size 4½ mm, cast on 40 sts. Work back and forth in K4,P4 rib. When work measures approx. 20 cm/7.9 in, bind off in rib.
Work same for the other wristwarmer.

Finishing:

Place 8 sts over each other, and sew tog with 4 buttons (see photo), first button 2 cm/0.8 in from upper edge, last one 2 cm/0.8 in from lower edge, and rest evenly spaced apart.

Viking Kid Mohair

Shawl

1304-22

Size Woman

ALTERNATIVE YARN: Viking Kid Mohair (70% kid mohair, 18% merino wool, 12% nylon), 50 g ball, Viking Eco Alpaca (100% alpaca), 100 g skein, Viking Odin (100% wool, superwash), 100 g ball

Turquoise, 929 (Pink, 966)

2 balls

Circular needle size 6 or 7 mm – US 10 or 10½ – UK/Canadian 4 or 2

Gauge, lace patt: 12 sts = approx. 10 cm/4 in over St st using needles size 6 mm.

Check your gauge to ensure success.

Beg from upper edge:

Using needles size 6 mm, cast on 4 sts. Work 2 rows in Garter st. Work next 6 rows as foll:

1st row = RS: K1 – 1 yo – K2 (= mid) – 1 yo – K1 = 6 sts

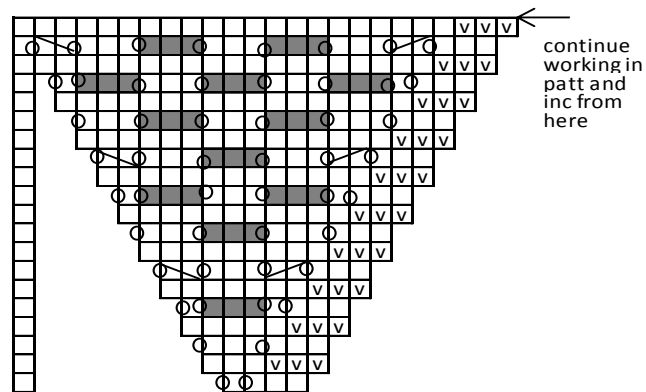
2nd row = WS: Knit, purl 2 mid sts.

3rd row = RS: K2 – 1 yo – K2 – 1 yo – K2 = 8 sts

4th and 6th row = WS: same as 2nd row

5th row = RS: K3 – 1 yo – K2 – 1 yo – K3 = 10 sts

Cont working in patt as charted. Note! When chart is ready, cont inc 1 st every 2nd row inside 3 Garter sts at each side, and 1 st both sides of 2 mid sts (= 4 inc sts). Same time, cont working in same patt as before between inc. When work measures approx. 70 cm/27.6 in, measured mid back (Note! Take care that there is enough yarn left for edge, binding off and fringes). Work 6 rows in Garter st over all sts, and cont repeating inc at each side and mid back. Bind off rather loosely. Tie approx. 10 cm/4 in long fringes across the lower edge.



= mid work patt in rev on the other side

□ = knit (knit on RS, pur on WS)

▤ = purl (purl on RS, knit on WS)

⊙ = 1 yo

▨ = sl 1 st, K2tog, psso

▧ = K2tog

▩ = K2togtbl

Viking Kid Mohair

Sweater

1304-23

Size	S	M	L
Bust:	96	107	118 cm
	38.8	42.2	46.4 in
Length:	62	65	68 cm
	24.4	25.6	26.8 in
Sleeve length:	46	48	49 cm
	18.1	18.9	19.3 in

ALTERNATIVE YARN: Viking Kid Mohair (70% kid mohair, 18% merino wool, 12% nylon), 50 g ball, Viking Eco Alpaca (100% alpaca), 100 g skein, Viking Odin (100% wool, superwash), 100 g ball

Cherry, 963

5

6

6 balls

Circular needle size 4½ mm – US 7 – UK/Canadian 7

Gauge: 18 sts = approx. 10 cm/4 in over St st using needles size 4½ mm. **Check your gauge to ensure success. a**

IMPORTANT:

Always knit 1st st of each row.

BACK

Using needles size 4½ mm, cast on 86 – 96 – 106 sts. Work back and forth 4 cm/1.6 in in K2,P2 rib. Cont working in Garter st. When work measures approx. 37 – 38 – 40 cm/14.6-15-15.7 in, bind off 5 sts at each edge. Dec 1 st beg of **each** row for raglan. Rep dec until there is 26 – 28 – 30 sts on a row. Leave work aside.

FRONT

Using needles size 4½ mm, cast on 86 – 96 – 106 sts. Work back and forth 4 cm/1.6 in in K2,P2 rib. Inc for cable patt as foll: Garter st over 35 – 40 – 45 sts, inc 14 sts over next 16 sts = 30 sts (= patt A) and end with Garter st over 35 – 40 – 45 sts. Cont working as established. When work measures approx. 37 – 38 – 40 cm/14.6-15-15.7 in, bind off 5 sts at each edge. Dec 1 st **beg of each row** for raglan. Rep dec until 40 – 42 – 44 sts rem. Leave work aside.

SLEEVES

Using needles size 4½ mm, cast on 48 – 52 – 54 sts. Work back and forth 4 cm/ in in K2,P2 rib. Cont working in Garter st, **and** inc 1 st at each side approx. every 3½ – 3 – 2½ cm/1.4-1.2-2 in. Rep inc until there is 70 – 80 – 88 sts on a row, and sleeve measures approx. 46 – 48 – 49 cm/18.1-18.9-19.3 in. Bind off 5 sts at each edge. Dec 1 st beg of **each** row for raglan. Rep dec until 10-12-12 sts rem. Leave work aside.

Work same for the other sleeve.

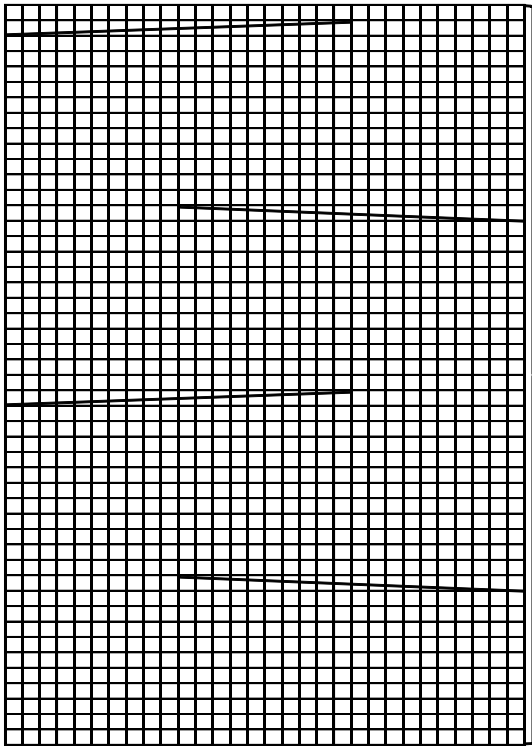
FINISHING

Sew side seams. Sew sleeve seams. Sew all raglan-seams.

NECK BAND

Slip all sts on same circular needle = 86-94-98 sts. Work 1 rnd in St st, and dec 14 sts evenly across patt A = 72-80-84 sts rem. Work approx. 4 cm/1.6 in K2,P2 rib. Bind off in rib.

Pattern A



Repeat

□ = Knit on RS, purl on WS

▬ = Sl 10 sts on cn,
hold to front, K10, knit sts from cn

▬ = Sl 10 sts on cn,
hold to back, K10, knit sts from cn.