

Viking Bjørk

Sweater

1301-1

Size:	1/3	6	9	12	18 months
Chest: approx.	43	47	51	55	57 cm
	16.9	18.5	20.1	21.7	22.4 in
Length, back: approx.	25	27	30	32	35 cm
	9.8	10.6	11.8	12.6	13.8 in
Length, front: approx.	22	24	27	29	32 cm
	8.7	9.4	10.6	11.4	12.6 in
Sleeve length: approx.	18	20	22	24	26 cm
	7.1	7.9	8.7	9.4	10.2 in

ALTERNATIVE YARN: Viking Bjørk (90% cotton, 10% merino, superwash), Viking Alpaca Silk (50% alpaca, 50% silk), 50 g ball

Dark Violet, 569 2 2 3 3 4 balls

Double pointed needles and circular needle size 2½ and 3 mm – US 1 or 2 and 2 or 3 – UK/Canadian 13 or 12 and 11

Gauge: 25 sts = approx. 10 cm/4 in over St st using needles size 3. **Check your gauge to ensure success.**

Note! Back is longer than front. Leave splits each side.

Back

Using needles size 3 mm, cast on 54-58-64-68-72 sts. Work back and forth approx. 2 cm/0.8 in in K2,P2 rib. Cont working back and forth in Garter st. **Note! Knit always first st, DON'T slip it.** When work measures approx. 25-27-30-32-35 cm/ 9.8-10.6-11.8-12.6-13.8 in, bind off.

Front

Work same as for back. When work measures approx. 19-21-24-25-28 cm/7.5-8.3-9.4-9.8-11 in, bind off for neck edge mid 20-22-22-24-24 sts. Finish each side separately. Bind off at neck edge every 2nd row 1x3, 1x2 and 1x1 st. When work measures 22-24-27-29-32 cm/8.7-9.4-10.6-11.4-12.6 in, bind off. Work same for the other side, rev all shaping.

Sleeves

Using needles size 3 mm, cast on 36-39-42-45-45 sts. Work back and forth 8 cm/3.1 in in Garter st (will be folded in double). Cont working in Garter st, and inc 1 st at each edge approx. every 2 ½-2 ½-2-2-2 ½ cm/ 1-1-0.8-0.8-1 in until you have altog. 50-55-60-65-65 sts on a row. When work measures 18-20-22-24-26 cm/ 7.1-7.9-8.7-9.4-10.2 in (**Note!** Fold edge in double while measuring = 4 cm/1.6 in), bind off.

Work same for the other sleeve.

Finishing

Sew shoulder seams. Sew side seams, leaving approx. 10-11-12-13-13 cm/4-4.3-4.7-5.1-5.1 in for armholes and approx. 3 cm/1.2 in in split each side. Back is approx. 3 cm/1.2 in longer than front. Sew sleeve seams, and set in sleeves.

Viking Bjørk

Tights

1302-2

Size	3	6/9	12	18/24 months
Hips	40	44	46	50 cm
	15.7	17.3	18.1	19.7 in
Leg length	15	18	21	25 cm
	5.9	7.1	8.3	9.8 in

ALTERNATIVE YARN: Viking Bjørk (90% cotton, 10% merino wool), Viking Alpaca Silk (50% alpaca, 50% silk), 50 g ball

White, 500 2 2 2 3 balls

Circular needle and double pointed needles size 2½ and 3 mm – US 1 or 2 and 2 or 3 – UK/Canadian 13 or 12 and 11 + elastic

Gauge: 25 sts = approx. 10 cm/4 in over St st using needles size 3 mm. **Check your gauge to ensure success.**

Seed st:

1st rnd: K1, P1

2nd rnd: Knit all purl-sts, purl all knit-sts

Rep 2nd rnd

Beg from waist

Using needles size 2 ½ mm, cast on 108 – 120 – 120 – 132 sts.

Work in rnds approx. 2 – 2 – 2 – 3 cm/0.8-0.8-0.8-1.2 in in K1,P1 rib. Change to needles size 3 mm. Place markers mid front and back. Beg mid back, and work in patt A. **Same time** work short rows for back: Work 6 sts, turn, work 12 sts, turn.

Cont working in the same way, 6 sts more before each turning, altog. 8 – 8 – 10 – 10 times (= 4 – 4 – 5 – 5 times for each side).

Cont working in rnds in patt A. When work measures approx. 18 – 19 – 20 – 21 cm/7.1-7.5-7.9-8.3 in (measured mid front), inc 1 st both sides of the markers mid front and back. Rep inc every

2nd rnd altog. 6 times (work these sts in Seed st). Next rnd: Bind off all inc sts (= 12 sts front and back). Work each leg separately.

Leg (= 54 – 60 – 60 – 66 sts)

Cont working in rnds in patt A. When work measures approx. 8 – 11 – 14 – 18 cm/3.1-4.3-5.5-7.1 in, K2tog in every 2nd cable.

Work 3 cm/ in. K2tog in all rem cables. Cont working in K1,P1 rib until leg measures approx. 15 – 18 – 21 – 25 cm/5.9-7.1-8.3-9.8 in. Work heel over 18 – 20 – 20 – 22 sts mid back. First row:

Dec evenly across number of sts to be 14 – 16 – 16 – 18 sts, **and** turn when 1 st, work until 1 st rem at the other edge, turn. Cont

working in the same way until 4 – 4 – 4 – 6 mid sts rem. Turn, work 1 st more for each row. M1 between last mid st and next st

in order to avoid holes in the work, knit these 2 sts tog. When all sts are returned back to work, cont working in patt A with sts on

top of the foot, and in St st with sole sts. When foot measures approx. 8 – 9 – 10 – 11 cm/3.1-3.5-4-4.3 in (or desired length

before dec), dec evenly across patt A number of sts to be 14 – 16 – 16 – 18 sts. Place a marker each side of patt A. Beg from one

side marker, K2togtbl, work until 2 sts rem before next side marker, K2tog, K2togtbl, work until 2 sts rem before the other

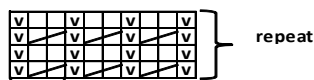
side marker, K2tog. Work 1 rnd without dec. Rep dec, and after that cont dec every rnd until 12 sts rem. Break yarn, and thread

through rem sts. Pull tightly, and weave in on WS. Work same for the other leg.

Finishing:

Sew crotch seam. Fasten elastic inside waist rib by cross sts.

Pattern A



Repeat

☐ = Knit on RS, purl on WS

∇ = Purl on RS, knit on RS

▧ = Knit 2nd st tbl, and after that knit 1st st

Viking Bjørk

Blanket

1301-3

Size: approx. 55x70 cm
21.7 x 27.6 in

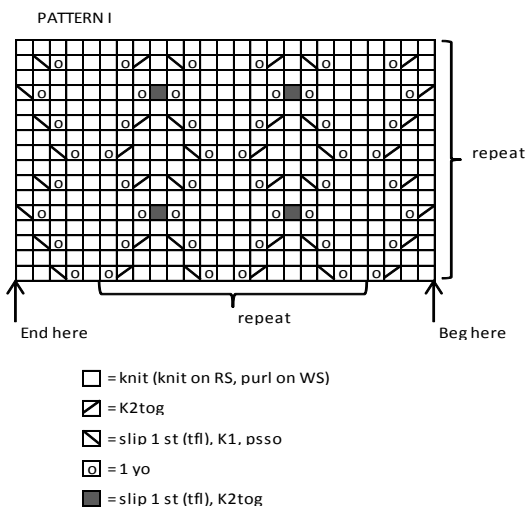
ALTERNATIVE YARN: Viking Bjørk (90% cotton, 10% merino, superwash), Viking Alpaca Silk (50% alpaca, 50% silk), 50 g ball

White, 500 4 balls
Circular needle size 3 mm – US 2 or 3 – UK/Canadian 11

Gauge: 25 sts = approx. 10 cm/4 in over St st using needles size 3 mm. **Check your gauge to ensure success.**

BLANKET

Using needles size 3 mm, cast on 121 sts. Knit 1 row. Cont working in patt I as charted until work measures approx. 64 cm/25.2 in. End with a complete motif. Bind off.



Border:

Using needles size 3 mm, cast on 5 sts. Knit 1 row. Beg from RS:

***1st row (RS):** K1 – 1 yo – K2tog – 1 yo – K2.

2nd row (WS): Knit

3rd row: K2 – 1 yo – K2tog – 1 yo – K2.

4th row: Knit

5th row: K3 – 1 yo – K2tog – 1 yo – K2.

6th row: Knit

7th row: K4 – 1 yo – K2tog – 1 yo – K2.

8th row: Knit

9th row: K5 – 1 yo – K2tog – 1 yo – K2.

10th row: Bind off first 5 sts – K5*.

Rep *-* until border measures around the blanket (check that corners don't turn out to be too tight).

Viking Bjørk

Christening gown

1301- 4

Size: 3 months

Chest 51 cm

20.1 in

Length 90 cm

35.4 in

Sleeve length 18 cm

7.1 in

ALTERNATIVE YARN: Viking Bjørk (90% cotton, 10% merino wool), Viking Alpaca Silk (50% alpaca, 50% silk), 50 g ball

White, 500 10

balls

Hat (girl or boy)

White, 500

1 ball

Circular needle and double pointed needles size 2½ and 3 mm – US 1 or 2 and 2 or 3 – UK/Canadian 13 or 12 and 11 + 3 buttons

Gauge: 25 sts = approx. 10 cm/4 in over St st using needles size 3 mm. **Check your gauge to ensure success.**

Pattern A:

First rnd: K1, *sl 1 st, K1, pssso, K2tog, K6, 1 yo, K1, 1 yo, K6*, rep *-* across the rnd, end with K5.

Second rnd: Purl.

Using needles size 3 mm, cast on 272 sts. Work 2 rnds in Garter st. Cont working in patt A, rep 4 times = 5 rills. Work 1 rnd in St st, and dec evenly across 16 sts (= 1 st over each motif) = 256 sts rem. Work in patt B as charted until work measures approx. 84 cm/33.1 in (end with a complete motif). Work 1 rnd in St st, and knit all sts tog in pairs = 128 sts. Place markers each side, and one marker on back, 64 sts for front, 35 sts for left side of back and 29 sts for right side of back. Divide work at marker on the **back**, and cont working back and forth as foll: Work Garter st over first 6 sts (= border for buttonholes), St st over rem sts, and cast on 6 sts to the end of the row (work in Garter st = buttonband). When work measures approx. 5 cm/2 in (all measures are taken from patt B), make a buttonhole: Work 2 sts, bind off 3 sts. Next row: Cast on 3 new sts over the bound-off sts. Bind off 8 sts each side for armholes (4 sts both sides of sidemarkers). Finish first left side of back. Cont working in St st and Garter st, and bind off at armhole edge every 2nd row 1x2, and 1x1 st. When work measures approx. 9 cm/3.5 in, make another buttonhole. When work measures 13 cm/5.1 in, bind off first 10 sts for neck edge. Bind off at neck edge every 2nd row 1x6, 1x2, and 1x1 st. When work measures approx. 15 cm/5.9 in, bind off.

Work same for right front, without buttonholes, rev all shaping.

Front: Bind off for armholes same as for back. When work measures approx. 10 cm/4 in, bind off 12 mid sts for neck edge. Finish each side separately.

Right front: Bind off at neck edge every 2nd row 1x3, 2x2, and 3x1 st. When front measures same as back, bind off sts.

Left front: Work same as for right front, rev all shaping.

Sleeves:

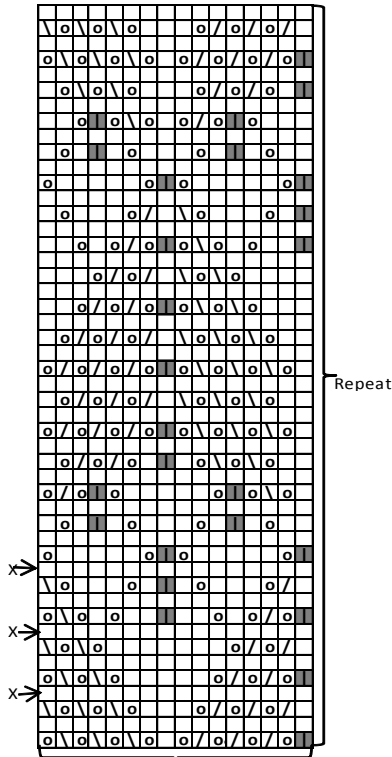
Using needles size 3 mm, cast on 51 sts. Work 2 rnds in Garter st. Cont working in patt A, rep 4 times = 5 rills. Work 1 rnd in St st, and dec evenly across number of sts to be 42 sts. Place a marker beg of rnd. Cont working in St st. Inc 1 st both sides of the marker approx. every 4 cm/1.6 in until you have 50 sts on a rnd, and sleeve measures 16 cm/6.3 in (measured from eyelet rnd). Bind off 8 sts mid under sleeve (4 sts both sides of the marker). Cont working back and forth. Bind off beg of each row 1x2, and 1x1 st. Bind off rem sts.

Finishing: Join shoulder seams.

Neck band: Beg from left side of back. Pick or knit up 2 sts, cast on 3 sts (= buttonhole), skip 3 sts, and cont picking or knitting up sts along neck edge, approx. 68 sts altog. Work 2 rows in Garter st, and then patt A 4 times. Note! When patt A is worked back and forth, knit 2nd row on WS. Bind off.

Sew on sleeves

Pattern B



- = knit
- = sl 1 st, K2tog, pssso
- ▣ = K2tog
- ▤ = sl 1 st, K1, pssso
- ⊖ = 1 vo

X → = last st on the rnd will be beg of next rnd

Hat, boy:

Using needles size 2½ mm, cast on 102 sts. Work 7 rnds in Garter st. Change to needs size 3 mm. Cont working in rnds in St st, and inc and dec as foll: K1, M1, K15, sl 1 st, K2tog, pssso, K15, M1, K1, M1, K15, sl 1 st, K2, pssso, K15, M1, K1, M1, K15, sl 1 st, K2tog, pssso, K15, M1.

Rep inc/dec every 2nd rnd altog 9 times. Cont working in St st without inc, but cont **dec** same as before. Rep dec every 2nd rnd until you have altog. 14 dec in height. Work as foll: *K1, K2tog, St st over 8 sts, sl 1 st, K2tog, pssso, St st over 8 sts, sl 1 st, K1, pssso*, rep *-* across the rnd. Rep dec 3 sts every 2nd rnd same as before, but dec over the St st panels only every 4th rnd. When 18 sts rem, knit all sts tog in pairs. Break yarn, and thread through rem sts.

Twist 2 cords, approx. 25 cm/ in long. Fasten one to each ear flap.

Hat, girl:

Beg mid back. Using needles size 2½ mm, cast on 6 sts. Purl 1 row. Work in St st, and inc 1 st to each st on first row = 12 sts. Purl 1 row. Next row: Inc evenly across number of sts to be 18 sts. Purl 1 row. Next row: Inc evenly across number of sts to be 25 sts. Purl 1 row. Next row: *K1, 1 yo*, rep *-* across the row (end with 1 knit-st) = 49 sts. Change to needles size 3 mm. Purl 1 row. Work patt I and II as charted.

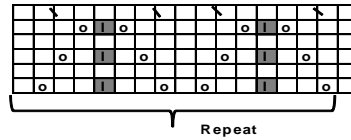
There is now 81 sts on a row. Cast on 5 sts beg and end of row = 91 sts. Cont working in patt C as charted. 5 extra sts at each edge are for neck band.

When patt C is ready, work in patt A over mid 81 sts (see christening gown). When patt A is worked back and forth, knit 2nd row from WS, and end patt inside 5 Garter sts with sl 1 st,

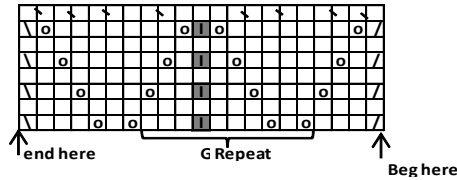
K1, pssso. Cont working in patt A over all sts, rep 4 times, work 2 rows in Garter st over all sts. Bind off.

Finishing: Sew tog mid back seam = patt I and II. Sew cast-on edges of 5 Garter sts tog (see photo).

Pattern I

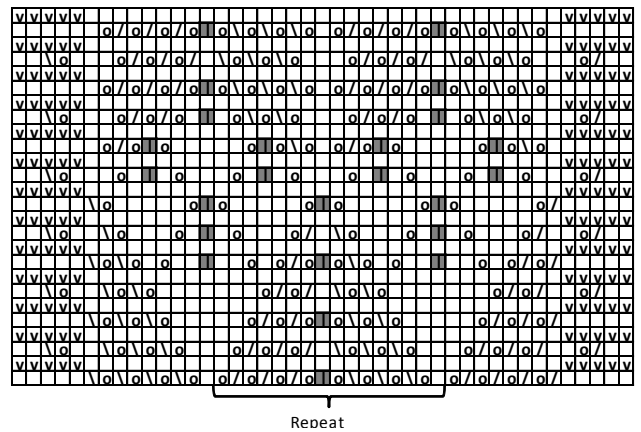


Pattern II



□ = Inc here

Pattern C



- = knit
- = sl 1 st. K2tog. pssso
- ▣ = K2tog
- ▤ = sl 1 st. K1. pssso
- ▥ = ourl on RS. knit on WS
- ⊖ = 1 vo

Viking Bjørk
Christening gown

1301-5

Size:	3 months
Chest	51 cm
	20.1 in
Length	95 cm
	37.4 in
Sleeve length	18 cm
	7.1 in

ALTERNATIVE YARN: Viking Bjørk (90% cotton, 10% merino wool), Viking Alpaca Silk (50% alpaca , 50% silk), 50 g ball

Christening gown

White, 500	12 balls
Hat	
White, 500	1 ball

Circular needle and double pointed needles size 2½ and 3 mm – US 1 or 2 and 2 or 3 – UK/Canadian 13 or 12 and 11 + 8 buttons

Gauge: 25 sts = approx. 10 cm/4 in over St st using needles size 3 mm. **Check your gauge to ensure success.**

Pattern A:

1st rnd: K2, sl 1 st, K1, psso

K1, K2tog, K4, 1 yo, K3, 1 yo, K4, sl 1 st, K1, psso, rep *-*

across the rnd, end with K1, K2tog, K4, 1 yo, K3, 1 yo, K2

2nd rnd: Purl

Using needles size 3 mm, cast on 272 sts. Work 2 rnds in Garter st. Cont working in patt A, rep 9 times (= 10 rills). Place markers each side, 136 sts for both sides. Inc for cable patt as foll: Inc 3 sts over first 6 sts (= 9 sts) = patt C, St st over 41 sts, inc 6 sts over next 12 sts (= 18 sts) = patt B, inc 6 sts over next 18 sts (= 24 sts) = pattern A, inc 6 sts over next 12 sts (= 18 sts) = patt B, St st over 41 sts, inc 6 sts over next 12 sts (= 18 sts) = patt B, St st over 56 sts, inc 6 sts over next 12 sts (= 18 sts) = pattern B, St st over 56 sts, inc 3 sts over last 6 sts (= 9 sts) = patt D = 308 sts on a rnd.

Cont working in rnds as established. When work measures approx. 70 cm/27.6 in, divide work mid back, mid patt B. Cont working back and forth until work measures approx. 84 cm/33.1 in (end with a complete motif).

Work 2 rows in St st, and dec on **1st row** (= RS) over cable patt: Dec 3 sts over first 9 sts (= 6 sts) = patt C, St st over 41 sts, dec 6 sts over next 18 sts (= 12 sts) = pattern B, dec 6 sts over next 24 sts (= 18 sts) = patt A, dec 6 sts over next 18 sts (= 12 sts) = patt B, St st over 41 sts, dec 6 sts over next 18 sts (= 12 sts) = pattern B, St st over 56 sts, dec 6 sts over next 18 sts (= 12 sts) = pattern B, St st over 56 sts, and dec 3 sts over last 9 sts (= 6 sts) = pattern D.

2nd row: Knit all sts tog in pairs = 136 sts. Take all measurements from here. Work 6 rows in Garter st. Work in patt E, and inc evenly across 1st row number of sts to be 160 sts.

Work 6 rows in Garter st, and dec evenly across the row number of sts to be 128 sts. Place markers each side, 64 sts for front and 32 sts for each back piece.

Next row: Bind off 8 sts on each side (4 sts both sides of each marker). Finish first left back piece.

Cont working back and forth in St st, and bind off at armhole edge every 2nd row 1x2, and 1x1 st. When work measures 13 cm/5.1 in, bind off first 11 sts for neck edge. Bind off at neck edge every 2nd row 1x3, 1x2, and 1x1 st. When work measures approx. 15 cm/5.9 in, bind off sts.

Right back: Work same as for left side, rev all shaping.

Front: Bind off for armhole same as for back. When work measures approx. 10 cm/4 in, bind off mid 12 sts for neck edge. Finish each side separately.

Right front: Bind off at neck edge every 2nd row 1x5, 2x2, and 2x1 st. When front measures same as back, bind off.

Left front: Work same as for right side, rev all shaping.

Sleeves:

Using needles size 3 mm, cast on 32 sts. Work 2 rnds in Garter st. Work in patt A, rep 9 times (= 10 rills). Place a marker beg of rnd. Work 1 rnd in St st, and inc evenly across number of sts to be 64 sts. Work in patt E, and inc 1 st both side of the marker approx. every 2 cm/0.8 in until you have 78 sts on a rnd and sleeve measures approx. 18 cm/7.1 in. Bind off 12 sts mid under sleeve (6 sts both side of the marker). Cont working back and forth. Bind off beg of each row 1x3, and 1x1 st. Bind off.

Finishing: Join shoulder seams.

Neck band: Beg from left side of back. Pick or knit up approx. 68 sts. Work 10 rows in Garter st.

Beg from upper edge of the split, and crochet along both sides 1 sc-row. Turn, and cont working sc, **but** make 6 buttonholes along the edge, buttonhole = ch2. Make first buttonhole on neck

band, and rest evenly spaced apart. Break yarn once you reach the bottom of the split. Work 1 sc-row to the other side of the split (without buttonholes). Place buttonhole band over the other edge, and sew to the body.

Sew on sleeves.

Hat, boy:

See 1301-4

Pattern I :

1st row: *K1, K2tog, K4, 1 yo, K3, 1 yo, K4, sl 1 st, K1, psso*, rep *-*

across the row, end with K1.

2nd row: Knit.

Hat, girl:

Using needles size 3 mm, cast on 81 sts. Work back and forth 2 rows in Garter st. Cont working in patt I, rep 4 times (= 5 rills). Beg from RS, work 3 rows in St st, knit 1 row (= 1 rill), work 2 rows in St st, and inc evenly across 2nd row number of sts to be 96 sts. Cont working in patt E, and keep rep it until work measures approx. 12 cm/4.7 in. Cont working in St st. Cont working in **rnds** and dec as foll: *K2tog, K6*, rep *-* across the rnd. Work 2 rnds in St st. Rep dec every 3rd rnd twice with 1 st less between dec, and then every 2nd rnd until 6 sts rem. Break yarn, and thread through rem sts.

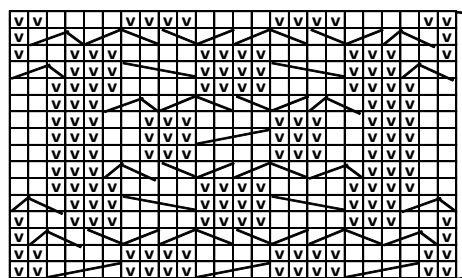
Ruffled edge

Beg from RS, using needles size 3 mm, pick or knit up 1 st from each st. Purl 1 row. Cont working in St st, and inc on next row 1 st to **each** st. Cont working back and forth until work measures approx. 2 cm/0.8 in. Bind off. Crochet 1 sc-row across the bound-off edge.

Neck edge: Beg from RS, using needles size 2½ mm, pick or knit up approx. 53 sts. Work back and forth 6 rows in K1,P1 rib, **but** knit an eyelet row on 3rd row = *K2, 1 yo*, rep *-* across the row, end with K1. Bind off in rib.

Sew ruffled edge along neck edge on each side.

Pattern A



□ = Knit on RS, purl on WS

▣ = Purl on RS, knit on WS

▨ = Sl 2 sts on cn, hold to back, K2, knit sts from cn

▩ = Sl 2 sts on cn, hold to front, K2, nit sts from cn

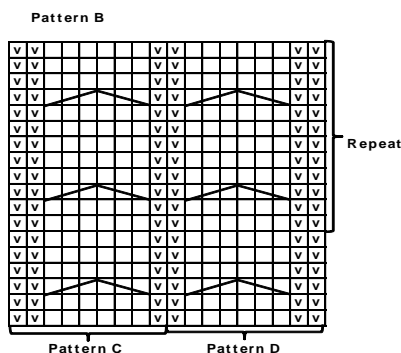
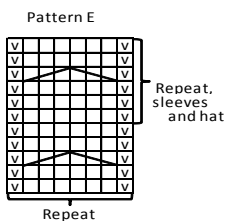
▧ = Sl 1 st on cn, hold to back, K2, purl sts from cn

▦ = Sl 2 sts on cn, hold to front, P1, knit sts from cn

▤ = Sl 2 sts from cn, hold to front, P2, nit sts from cn

▥ = Sl 2 sts on cn, hold to back, K2, purl sts from cn

▃ = Sl 3 sts on cn, hold to front, K3, knit sts from cn



Viking Bjørk

Dress with bolero

1301-6

Size: 6/9 12 18 months 2 3 4 yrs

Dress:	6/9	12	18 months	2	3	4 yrs
Chest	48	50	52	54	56	60 cm
	18.9	19.7	20.5	21.3	22	23.6 in
Length	40	44	48	51	54	56 cm
	15.7	17.3	18.9	20.1	21.3	22 in

Bolero:	6/9	12	18 months	2	3	4 yrs
Chest	52	55	57	59	61	65 cm
	20.5	21.7	22.4	23.2	24	25.6 in
Length	17	18	19	20	22	23 cm
	6.7	7.1	7.5	7.9	8.7	9.1 in
Sleeve length:	22	24	26	28	30	31 cm
	8.7	9.4	10.2	11	11.8	12.2 in

ALTERNATIVE YARN: Viking Bjørk (90% cotton, 10% merino wool), Viking Alpaca Silk (50% alpaca, 50% silk), 50 g ball

White, 500: 6 6 7 7 8 8 balls

Circular needle and double pointed needles size 2½ and 3 mm – US 1 or 2 and 2 or 3 – UK/Canadian 13 or 12 and 11

Gauge: 25 sts = approx. 10 cm/4 in over St st using needles size 3 mm. **Check your gauge to ensure success.**

DRESS

Using needles size 3 mm, cast on 240 – 252 – 264 – 276 – 288 – 300 sts. Work 10 rnds in Garter st. Place markers each side, 120 – 126 – 132 – 138 – 144-150 sts for both back and front. Work 1 rnd in St st, **but** end 21 sts **before** side marker (= beg of rnd).

Inc sts for cable patt: *Inc 6 sts over next 12 sts (= 18 sts) = patt B, inc 6 sts over next 18 sts (= 24 sts) = pattern A, inc 6 sts over next 12 sts (= 18 sts) = patt B, work St st over 18 – 21 – 24 – 27 – 30 – 33 sts*, rep *-* altog. 4 times = 312-324-336-348-360-372 sts on a rnd.

Cont working in rnds as established until work measures approx. 25 – 28 – 31 – 33 – 35 - 36 cm/9.8-11-12.2-13-13.8-14.2 in.

Work 2 rnds in St st, and dec evenly across **1st rnd** over cable patt as foll: *Dec 6 sts over first 18 sts (= 12 sts) = patt B, dec 6 sts over next 24 sts (= 18 sts) = pattern A, dec 6 sts over next 18 sts (= 12 sts) = patt B, work St st over 18 – 21 – 24 – 27 – 30 – 33 sts*, rep *-* altog. times = 240-252-264-276-288-300 sts on a rnd. **2nd rnd:** Knit all sts tog in pairs = 120 – 126 – 132 – 138 – 144 – 150 sts. Place markers mid patt A = mid front, mid back

and each side. All measurements are taken from here. Divide work at mid back marker, and work back and forth 6 rows in Garter st.

Work in patt C, and inc evenly across 1st row number of sts to be 160 – 168 – 176 – 184 – 192 – 200 sts. When patt C is ready, work 6 rows in Garter st, and dec evenly across first row number of sts to be 120 – 126 – 132 – 138 – 144 – 150 sts. Place markers each side, 60 – 64 – 66 – 68 – 72 – 74 sts for front, and 30 – 31 – 33 – 35 – 36 – 38 sts for each back piece.

Next row: Bind off 8-8-8-10-10-10 sts each side (4-4-4-5-5-5 sts both side of the markers). Finish left back piece first. Cont working back and forth in St st, and bind off at armhole edge every 2nd row 1x2, and 1x1 st. When work measures approx. 13 – 14 – 15 – 16 – 17 – 18 cm/5.1-5.5-5.9-6.3-7.1 in, bind off first 8 – 9 – 9 – 10 – 11 – 11 sts for neck edge. Bind off at neck edge every 2nd row 1x2, and 1x1 st. When work measures approx. 15 – 16 – 17 – 18 – 19 – 20 cm/5.9-6.3-6.7-7.1-7.5-7.9 in. Fell av. Work same for right side, rev all shaping.

Front: Bind off for armhole same as for back. When work measures approx. 10 – 11 – 12 – 13 – 14 – 15 cm/4-4.3-4.7-5.1-5.5-5.9 in, bind off mid 8 – 10 – 10 – 10 – 12 – 12 sts for neck edge. Finish each side separately.

Right front: Bind off at neck edge every 2nd row 1x4 – 4 – 4 – 5 – 5 – 5, 1x2, and 1x1 st. When front measures same as back, bind off sts.

Left front: Work same as for right side, but rev all shaping.

Finishing: Join shoulder seams.

Neck band: Beg from left side of back. Using needles size 2½ mm, pick or knit up approx. 64-68-68-74-76-78 sts. Work back and forth 6 rows in Garter st. Knit 1 row, and inc evenly across number of sts to be 90-90-90-98-98-98 sts. Work in patt C (from WS), **but** inc 2 sts to each purl panel on 3rd row (= to first and last st). Purl inc sts. Rep inc on 5th, 7th and 9th row = 154 – 154 – 154 – 168 – 168 – 168 sts. When patt C is ready, work 6 rows in Garter st, and dec 2 sts over each cable on 1st row = 132 – 132 – 132 – 144 – 144 – 144 sts. Bind off

Beg from neck edge, and crochet 1 sc-row along split edges. Turn, and crochet another sc-row to one edge of the split, and make 5 buttonholes (= ch2). Make first buttonhole 2 sts from upper edge, and rest 4-5 cm/1.6-2 in spaced apart (measured from mid buttonhole to mid of next buttonhole). Break yarn at the bottom of the split. Work same for the other side, but without buttonholes. Place buttonhole band over button band, and sew ends to the body.

BOLERO

Using needles size 3 mm, cast on 64 – 68 – 70 – 74 – 76 – 80 sts (= back). Purl 1 row. Inc sts for cable patt as foll: St st over 26 – 28 – 29 – 31 – 32 – 34 sts, inc 6 sts over next 12 sts (= 18 sts) = patt B, and end with St st over 26 – 28 – 29 – 31 – 32 – 34 sts. Cont working back and forth as established, **and** inc beg of each row for fronts as foll:

Size 6/9 months: 1x8, 1x6, 2x4, 1x3, 2x2, and 4x1 st

Size 12 months: 1x8, 2x6, 1x4, 1x3, 2x2, and 4x1 st

Size 18 months: 1x8, 1x7, 1x6, 1x4, 1x3, 2x2, and 4x1 st

Size 2 yrs: 1x8, 2x6, 1x4, 2x3, 2x2, and 3x1 st

Size 3 yrs: 1x8, 1x7, 1x6, 1x4, 2x3, 2x2, and 4x1 st

Size 4 yrs: 1x9, 1x8, 1x6, 1x4, 2x3, 2x2, and 4x1 st

All sizes: Place markers each side, 33 – 35 – 36 – 37 – 39 – 41 sts for both fronts, and 70 – 74 – 76 – 80 – 82 – 86 sts for back.

Next row: Bind off 8 – 8 – 8 – 10 – 10 – 10 sts each side (4 – 4 – 4 – 5 – 5 – 5 sts both sides of markers). Finish back first.

Cont working back and forth in St st and patt B, and bind off at armhole edges every 2nd row 1x2, and 1x1 st. When work measures approx. 15 – 16 – 17 – 18 – 20 – 21 cm/5.9-6.3-6.7-7.1-7.9-8.3 in, work as foll: St st over 19-21-22-23-24-26 sts, dec 6 sts over next 18 sts (= 12 sts) = pattern B, and St st over 19-21-22-23-24-26 sts. Next row: Bind off mid 16 – 18 – 18 – 20 – 20

– 22 sts for neck edge. Finish each side separately.
Bind off at neck edge every 2nd row 1x2, and 1x1 st. When work measures approx. 17 – 18 – 19 – 20 – 22 – 23 cm/6.7-7.1-7.5-7.9-8.7-9.1 in, bind off.

Work same for the other side, rev all shaping.

Right front: Bind off for armholes same as for back. When work measures approx. 12 – 13 – 14 – 15 – 17 – 18 cm/4.7-5.1-5.5-5.9-6.7-7.1 in, bind off first 6 – 7 – 7 – 7 – 7 – 8 sts for neck edge.

Bind off at neck edge every 2nd row 1x3 – 3 – 3 – 3 – 4 – 4, 1x2, and 1x1 st. When front measures same as back, bind off sts.

Left front: Work same as for right front, but rev all shaping.

Sleeves:

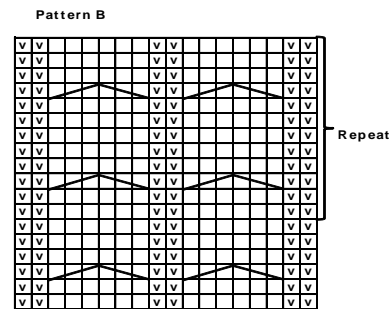
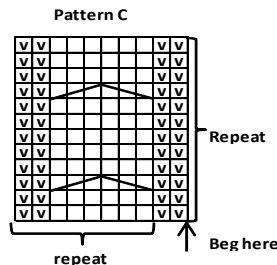
Using needles size 2½ mm, cast on 36 – 38 – 40 – 40 – 42 – 42 sts. Work back and forth 10 rows in Garter st. Change to needles size 3 mm. Work 2 rows in St st, and inc evenly across 1st row number of sts to be 48 – 48 – 50 – 52 – 54 – 56 sts. Inc for cable patt as foll on 2nd row: St st over 3 – 3 – 4 – 5 – 6 – 7 sts, inc 6 sts over next 12 sts (= 18 sts) = patt B, inc 6 sts over next 18 sts (= 24 sts) = patt A, inc 6 sts over next 12 sts (= 18 sts) = patt B, and end with St st over 3 – 3 – 4 – 5 – 6 – 7 sts = 66 – 66 – 68 – 70 – 72 – 74 sts on a row. Cont working back and forth as established, and inc 1 st at each edge approx. every 5 – 5½ – 5 – 4 – 3½ – 3 cm/2-2.2-2-1.6-1.4-1.2 in until you have 74 – 74 – 78 – 84 – 88 – 94 sts on a row, and sleeve measures approx. 22 – 24 – 26 – 28 – 30 – 31 cm/8.7-9.4-10.2-11-11.8-12.2 in. Bind off 4 – 4 – 4 – 5 – 5 – 5 sts at each edge. Bind off every 2nd row 1x2, and 1x1 st. Next row, dec as foll: St st over 0 – 0 – 2 – 4 – 6 – 9 sts, dec 6 sts over next 18 sts (= 12 sts) = patt B, dec 6 sts over next 24 sts (= 18 sts) = patt A, and dec 6 sts over next 18 sts (= 12 sts) = patt B, St st over 0-0-2-4-6-9 sts. Next row: Bind off sts (purlwise from WS).

Finishing: Join shoulder seams.

Border round bolero: Beg from left shoulder, using needles size 2½ pick along neck edge approx. 19 – 20-20 – 22 – 22 – 24 sts (place a marker), approx. 56 – 61 – 64 – 68 – 72 – 78 sts along left front edge, 64 – 68 – 70 – 74 – 76 – 80 sts along lower edge of back, approx. 56 – 61 – 64 – 68 – 72 – 78 sts along right front edge, (place a marker), approx. 19 – 20 – 20 – 22 – 22 – 24 sts along right front neck edge, and 22 – 24 – 24 – 26 – 26 – 28 sts from back neck edge. Work back and forth 6 rows in Garter st. Always knit selvage sts. Inc 1 st every 2nd row both sides of the markers. Bind off.

Sew on sleeves.

CHARTS FOR 1301-6 AND 1301-7



Viking Bjørk

Cardigan

1301-7

Size:	3/6	9	12	18 months	2	4 yrs
Chest	45	51	55	57	60	65 cm
	17.7	20.1	21.7	22.4	23.6	25.6 in
Length	24	26	30	34	36	40 cm
	9.4	10.2	11.8	13.4	14.2	15.7 in
Sleeve length:	19	22	24	26	28	31 cm
	7.5	8.7	9.4	10.2	11	12.2 in

ALTERNATIVE YARN: Viking Bjørk (90% cotton, 10% merino wool), Viking Alpaca Silk (50% alpaca , 50% silk), 50 g ball

CARDIGAN

Grey, 513 3 3 4 4 5 5 balls

HAT

Grey, 513 1 1 1 1 1 1 ball

Circular needle and double pointed needles size 2½ and 3 – US 1 or 2 and 2 or 3 – UK/Canadian 13 or 12 and 11 + 5 – 5 – 6 – 6 – 7 – 7 buttons

Gauge: 25 sts = approx. 10 cm/4 in over St st using needles size 3 mm. **Check your gauge to ensure success.**

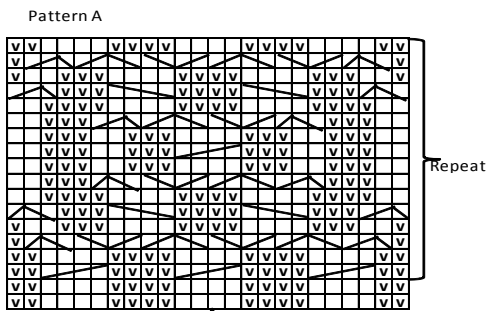
Using needles size 2½ mm, cast on 100 – 116 – 124 – 128 – 136 – 148 sts. Work as foll: K3 ,*P2, K2*, rep *-* across the row, end with K3 (when picking up sts for front edges, pick up sts between 1st and 2nd st). Work back and forth approx. 4 – 4 – 5 – 5 – 6 – 6 cm/1.6-1.6-2-2-2.4-2.4 in in rib.

Change to needles size 3 mm. WS-row: Purl, and inc evenly across number of sts to be 108-122-130-138-144-156 sts.

Inc for cable patt as foll: K1, inc 3 sts over next 7 sts (= 10 sts) = patt C, inc 6 sts over next 18 sts (= 24 sts) = patt A, P0-3-5-7-8-11 (place a marker = right front), St st over 22-26-28-30-32-35 sts, inc 6 sts over next 12 sts (= 18 sts) = patt B, and St st over 22-26-28-30-32-35 sts (place a marker = back), P0-3-5-7-8-11, inc 6 sts over next 18 st (= 24 sts) = patt A, inc 3 st over next 7 sts (= 10 sts) = patt C, and end with K1.

Cont working back and forth as established. When work measures 13 – 14 – 18 – 21 – 22 – 25 cm/5.1-5.5-7.1-8.3-8.7-9.8 in, divide work at side markers, and finish first back.

Back: When work measures 22 – 24 – 28 – 32 – 34 – 38 cm/8.7-9.4-11-12.6-13.4-15 in, dec 6 sts evenly over 18 mid sts (= 12 sts). Next row: Sl 18 – 18 – 20 – 20 – 20 – 20 mid sts on holder,



= mid front, back and each side = mid sleeve

- = Knit on RS, purl on WS
- ▣ = Purl on RS, knit on WS
- ▨ = Sl 2 sts on cn, hold to back, K2, knit sts from cn
- ▩ = Sl 2 sts on cn, hold to front, K2, knit sts from cn
- ▧ = Sl 1 st on cn, hold to back, K2, purl sts from cn
- ▦ = Sl 2 sts on cn, hold to front, P1, knit sts from cn
- ▥ = Sl 2 sts on cn, hold to front, P2, knit sts from cn
- ▤ = Sl 2 sts on cn, hold to back, K2, purl sts from cn
- ▣ = Sl 3 sts on cn, hold to front, K3, knit sts from cn

and finish each side separately. Bind off at neck edge every 2nd row 1x6 – 7 – 7 – 7 – 8 – 8, and 1x2 sts. When work measures approx. 24 – 26 – 30 – 34 – 36 – 40 cm/9.4-10.2-11.8-13.4-14.2-16.1 in, bind off.

Work same for the other side, but rev all shaping.

Right front: Cont working in patt same as before.

When work measures approx. 20 – 22 – 26 – 29 – 31 – 35 cm/7.9-8.7-10.2-11.4-12.2-13.8 in, dec 3 st evenly across 10 sts (= 7 sts) = patt C. Next row: Slip first 8 sts on holder. Bind off at neck edge every 2nd row 1x5 – 6 – 6 – 6 – 6 – 6, 1x2 – 2 – 2 – 3 – 3 – 3, and 2x1 st. When front measures same as back, work 1 row from RS over all sts, **and** dec evenly across number of sts to be 11-14-15-17-18-21 sts. Bind off.

Left front: Work same as for right front, but rev all shaping.

Sleeves: Using needles size 2½ mm, cast on 36 – 36 – 40 – 40 – 44 – 44 sts. Work in rnds 4 – 4 – 4 – 5 – 5 – 5 cm/1.8-1.8-1.8-2-2-2 in in K2,P2 rib. Change to needles size 3 mm. Work 2 rnds in St st, and inc evenly across 1st rnd number of sts to be 44 – 48 – 50 – 52 – 54 – 56 sts. Place a marker beg of rnd = mid under sleeve. Inc sts for cable patt on 2nd row: St st over 16 – 18 – 19 – 20 – 21 – 22 sts, inc 6 sts over 12 sts (= 18 sts) = patt B, and end with St st over 16 – 18 – 19 – 20 – 21 – 22 sts = 50 – 54 – 56 – 58 – 60 – 62 sts on a rnd. Cont working as established, and inc 1 st both sides of the marker approx. every 2 ½ – 3 – 3 – 3 – 2 ½ – 2 ½ cm/1-1.2-1.2-1.2-1-1 in until you have 62 – 66 – 68 – 72 – 78 – 82 sts on a rnd, and sleeve measures approx. 19 – 22 – 24 – 26 – 28 – 31 cm/7.5-8.7-9.4-10.2-11-12.2 in. Knit 1 rnd over all sts, **and** dec 6 sts evenly across 18 sts for patt B (= 12 sts). Bind off.

Finishing: Join shoulder seams.

Neck band: Using needles size 2½ mm, pick or knit up approx. 16-17-18-20-21-21 sts along right front neck edge, approx. 36 – 38 – 40 – 40 – 42 – 42 sts from back neck edge, and approx. 16-17-18-20-21-21 sts along left neck edge. Work as foll: K3, *P2, K2*, rep *-* across the row, end with K3. Work back and forth approx. 2-2½-3-3-3-3 cm/0.8-1-1.2-1.2-1.2-1.2 in in K2,P2 rib. Bind off in rib.

Right front: Using needles size 2½ mm, pick or knit up approx. 78 – 82 – 86 – 92 – 96 – 100 sts. Work back and forth approx. 2 – 2 ½ – 3 – 3 – 3 – 3 cm/0.8-1-1.2-1.2-1.2-1.2 in in K2,P2 rib. Bind off in rib.

Left front: Work same as for right front, **but** when work measures 1 – 1 – 1 ½ – 1 ½ – 1 ½ – 1 ½ cm/0.4-0.4-0.6-0.6-0.6-0.6 in, make 5 – 5 – 6 – 6 – 7 – 7 buttonholes, (Buttonhole: Bind off 2 – 2 – 3 – 3 – 3 – 3 sts. Next row: Cast on new sts over the bound-off sts). Make first buttonhole 2 – 2 – 3 – 3 – 3 – 3 sts from neck edge, and last 2 – 2 – 3 – 3 – 3 – 3 sts from lower edge, rest evenly spaced apart. When left front measures same as right, bind off.

Sew on sleeves.

HAT

Using needles size 2½ mm, cast on 92 – 100 – 104 – 108 – 112 – 116 sts. Work in rnds 6 – 6 – 6 – 7 – 7 – 7 cm/2.4-2.4-2.4-2.8-2.8-2.8 in in K2,P2 rib. Change to needles size 3 mm.

Inc for cable patt as foll: *St st over 16 – 18 – 19 – 20 – 21 – 22 sts, inc 3 sts over next 7 sts (= 10 sts) = patt C *, rep *-* across the rnd. Cont working as established until work measures approx. 14 – 15 – 16 – 18 – 19 – 20 cm/5.5-5.9-6.3-7.1-7.5-7.9 in. Work now as foll: *Sl 1 st, K1, pssso, St st over 12 – 14 – 15 – 16 – 17 – 18 sts, K2tog, and work patt C*, rep *-* across the rnd. Cont dec in this way every 2nd rnd until 10 sts rem for each St st panel. Work St st over all sts, and dec on 1st rnd as foll: *K2, K2tog*, rep *-* across the rnd. Knit 3 rnds. Next rnd: *K1, K2tog*, rep *-* across the rnd. Knit 2 rnds. Knit all sts tog in pairs. Knit 1 rnd. Knit all sts tog in pairs = 10 sts rem. Break

yarn, and thread through rem sts.

Ear flap: Cast on 4 sts. Work back and forth in St st, and inc 1 st to 1st st **every** row, until you have 16 – 16 – 16 – 18 – 18 – 18 sts on a row. Work 3 cm/ in without inc. Bind off.

Sew ear flaps each side of cables, with 5 – 5 – 6 – 6 – 7 – 7 cm/ 2-2-2.4-2.4-2.8-2.8 in spaced apart (mid back).

Twist 2 cords, approx. 30 cm/ 11.8 in long, and sew one to each ear flap.

Viking Bjørk

Coat

1301-8

Size:	12	18 months	2	4 yrs
Chest	54	58	62	67 cm
	21.3	22.8	24.4	26.4 in
Length	43	50	56	62 cm
	16.9	19.7	22	24.4 in
Sleeve length:	24	26	28	31 cm
	9.4	10.2	11	12.2 in

ALTERNATIVE YARN: Viking Bjørk (90% cotton, 10% merino wool), Viking Alpaca Silk (50% alpaca , 50% silk), 50 g ball

Violet, 569: 5 6 6 7 balls

Circular needle and double pointed needles size 2½ and 3 mm – US 1 or 2 and 2 or 3 – UK/Canadian 13 or 12 and 11 + 7-8-9-10 buttons

Gauge: 25 sts = approx. 10 cm/4 in over St st using needle size 3 mm. **Check your gauge to ensure success.**

Using needles size 3 mm, cast on 276 – 294 – 314 – 342 sts. Work back and forth in Garter st. Note! Always knit the first st on each row. After 10 rows, make first buttonhole on RH side. Buttonhole: Bind off 3 sts, inside 2 edge sts. Next row: Cast on 3 sts over the bound-off sts. When work measures approx. 5 cm/2 in, dec evenly across RS row 27 – 24 – 22 – 21 sts as foll: St st over 6 – 7 – 8 – 9 sts, K2tog, *K8 – 10 – 12 – 14, K2tog*, rep *-* across the row, end with K8 – 9 – 10 – 11. Cont working in Garter st. Rep dec 5-6-7-8 times approx. every 6 cm/2.4 in, **and** make a buttonhole at the same time. First buttonhole was already made earlier, and last one will be made at neck edge. When work measures 25 – 30 – 35 – 40 cm/ 9.8-11.8-13.8-15.7 in, and you have 141 – 150 – 160 – 174 sts on a row, inc for cable patt as foll: Garter st over 6 sts (= right front edge), inc 55-58-64-64 sts evenly across next 129-138-148-162 sts (= 184-196-212-226 sts), and end with Garter st over 6 sts = left front edge. RS-row: Garter st over 6 sts = right front edge, P1-2-3-5 – patt A over 42 sts – P2-7-4-9 – patt A over 94-94-114-114 sts – P2-7-4-9 – patt A over 42 sts – P1-2-3-5 – end with Garter st over 6 sts = left front edge.

Cont back and forth as established (remember buttonholes), **but** when patt A measures approx. 6 – 7 – 7 – 7 cm/ 2.4-2.8-2.8-2.8 in, divide work each side for armholes, 50-52-54-58 sts for each front, and 96-104-116-122 sts for back. Finish back first.

Back: Cont working back and forth until patt A measures approx. 16 – 18 – 19 – 20 cm/ 6.3-7.1-7.5-7.9 in, dec evenly across next RS-row number of sts to be 67 – 72 – 78 – 84 sts. Work 10 rows in Garter st. Bind off 16 – 18 – 19 – 22 sts for each shoulder. Leave rem sts on holder.

Right front: Work same as for back. When patt A measures approx. 13 – 14 – 15 – 16 cm/5.1-5.5-5.9-6.3 in, slip first 13 sts on holder (remember to make last buttonhole on last row). Bind off at neck edge every 2nd row 0 – 0 – 1 – 1x6, 1 – 1 – 0 – 0x5, 2 – 2 – 2 – 2x4, 1x2, and 1x1 st. When work measures same as back (before Garter st rows), dec evenly across RS-row number

of sts to be 16 – 18 – 19 – 22 sts (= shoulder). Work 10 rows in Garter st. Bind off.

Left front: Work same as for right front, but rev all shaping (and without buttonholes).

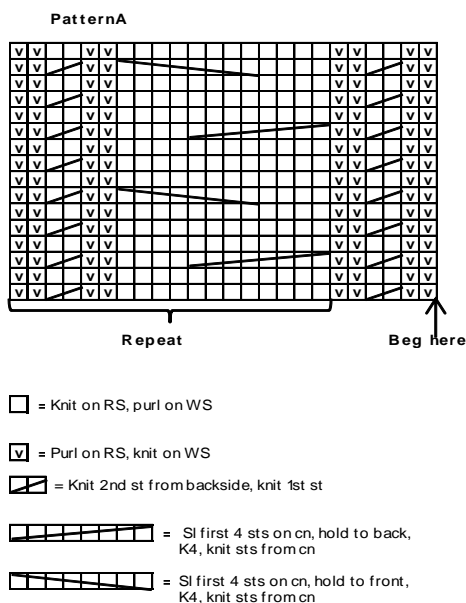
Sleeves

Using needles size 3 mm, cast on 40 – 42 – 44 – 48 sts. Work back and forth in Garter st (always knit the first st every row). After 20-20-24-24 rows, inc evenly across next RS-row number of sts to be 48 – 50 – 52 – 56 sts. Cont working back and forth in Garter st, **and** inc 1 st at each edge approx. every 3 – 2 ½ – 2 ½ – 2 ½ cm/1.2-1-1-1 in until you have 60 – 66 – 70 – 76 sts on a row, and sleeve measures approx. 24 – 26 – 28 – 31 cm/9.4-10.2-11-12.2 in (or desired length). Bind off.

Finishing: Join shoulder seams.

Neck band: Beg from right front (RS), slip first 13 sts on needles, work in Garter st (remember to cast on 3 sts over the bound-off buttonhole sts), pick or knit up approx. 12 – 12 – 15 – 15 sts along neck edge, knit 35 – 36 – 40 – 40 sts (= back, neck), pick up approx. 12 – 12 – 15 – 15 sts along left front neck edge, and slip last 13 sts on needle, and work in Garter st. Cont working back and forth in Garter st until work measures approx. 2 – 2 – 3 – 3 cm/0.8-0.8-1.2-1.2 in. Bind off.

Sew sleeve seams. Sew on sleeves.



Double pointed needles and circular needle size 2½ and 3 mm – US 1or 2 and 2 or 3 – UK/Canadian 13 or 12 and 11 + 4-5-5-5 small buttons + 4 silk flowers + elastic for diaper undies

Gauge: 25 sts = approx. 10 cm/4 in over St st using needles size 3 mm. **Check your gauge to ensure success.**

DRESS

Beg from lower edge, using needles size 3 mm and pink yarn, cast on 196-208-220-224 sts. Work in rnds 3 cm/1.2 in in St st. Next rnd: *K2tog – 1 yo*, rep *-* across the rnd (= folding edge). Cont working in rnds in St st until work measures approx. 27-29-32-34 cm/10.6-11.4-12.6-13.4 in, measured from folding edge. Place markers each side, 98-104-110-112 sts for each side. Beg from side, and work as foll: St st over 5-8-11-12 sts – make a folding over next 44 sts as foll: slip first 11 sts over extra needle, hold to front – knit 11 sts over extra needle tog with next 11 sts one at a time = 11 sts rem – slip next 11 sts over extra needle, hold to **back**, and knit tog with next 11 sts. Make another folding over next 44 sts (= dec altog. 44 sts over the front), work in St st over 5-8-11-12 sts = front. Work same for the back = 108-120-132-136 sts rem (54-60-66-68 sts for both front and back). Work 3 cm/ in in St st, measured mid front. Bind off 8 sts each side (4 sts both sides of the markers). Finish each side separately.

Back

Bind off 4 mid sts for split. Finish each side separately. Beg raglan-dec: Dec 1 st beg of every WS-row inside 1 selvage st altog. 14-16-18-19 times = 7-8-9-9 sts rem. Bind off. Work same for the other side, rev all shaping.

Front

Work same as for back. After altog. 11-13-15-16 raglan-dec, bind off 10-12-14-14 mid sts. Finish each side separately. Bind off at neck edge every 2nd row 1x2, and 2x1 st (Note! Carry on with raglan-dec). All sts have been dec now.

Work same for the other side, rev all shaping.

Sleeves

Using needles size 3 mm and pink yarn, cast on 45-49-53-57 sts. Work back and forth 2 cm/0.8 in St st. Next RS-row: *K2tog – 1 yo*, rep *-* across the row = folding edge. Purl in row. Change to Chicago glitter yarn, and work 4 rows in Garter st. Change to white yarn, and work in patt as charted. When work measures 2 cm/0.8 in, measured from folding edge, bind off 4 sts at each edge. Cont working back and forth, and beg raglan-dec at each edge, same as for dress altog. 14-16-18-19 times = 9-9-9-11 sts rem. Bind off.

Work same for the other sleeve.

Finishing

Sew raglan-seams, and sleeve seams.

Neck band: Beg mid back, using needs size 2½ mm and white yarn, pick or knit up approx. 51-53-57-59 sts. Beg from RS: Change to Chicago and work tightly 4 rows in Garter st. Change to white yarn, work 2 rows in St st. Next row: *K2tog – 1 yo*, rep *-* across the row = folding edge + 4 rows in St st. Bind off. Fold lower edge of the dress, neck band, and lower edges of the sleeves in double, and sew on WS.

Split edges:

Beg from RH side, using needles size 2½ mm and pink yarn, pick or knit up approx. 25-28-30-34 sts. Work back and forth 6 rows in Garter st. Bind off. Place markers for altog. 4-4-5-5 buttons.

Work same for left edge, but make buttonholes on 2nd row.

Buttonhole: Bind off 2 sts. Next row: Cast on 2 new sts over the bound-off sts.

Sew silkflowers over each folding (see photo).

Viking Bjørk

Dress and diaper undies 1301-9

Size:	1/3	6	9/12	18/24 months
Chest: approx.	43	48	53	54 cm
	16.9	18.9	20.9	21.3 in
Length: approx.	39	42	45	48 cm
	15.4	16.5	17.7	18.9 in
Sleeve length: approx	4	4	5	5 cm
	1.6	1.6	2	2 in

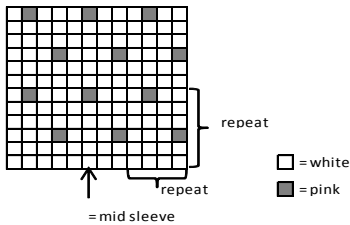
ALTERNATIVE YARN: Viking Bjørk (90% cotton, 10% merino, superwash), 50 g ball

DRESS

Pink, 564	3	3	4	4 balls
White, 500	1	1	1	1 ball
Chicago glitter yarn 000 – 1 ball for each size				

DIAPER UNDIES 1-3 months 6-18 months

White, 500	1	1 ball
Pink, 564	1	1 ball



DIAPER UNDIES (1-3 months) 6/18 months)

Beg from waist. Using short circular needle size 2½ mm, cast on 100-112 sts. Work in rnds 6 cm/2.4 in in K1,P1 rib, but when work measures 3 cm/1.2 in, make an eyelet rnd (*K2tog, 1 yo*, rep *-* across the rnd) = folding edge. Change to needles size 3 mm, work 1 in St st, and inc evenly across 8 sts = 108-120 sts. Place markers each side, 55-61 sts for back, and 53-59 sts for front. Place markers around mid front and back sts.

Beg mid back, and work short rows as foll: Beg from mid back marker, K6-7, turn, P11-13, cont working with 5-6 sts more before each turning altog. 5 times at each side, turn and work until mid back, and cont working over all sts in rnds in St st and patt as charted. When work measures approx. 14-16 cm/5.5-6.3 in, measured mid front from folding edge.

Place a new marker – all measurements are given from here.

Next rnd: Work from side marker before front: K7-9, bind off 5 sts, K29-31 (= mid front sts), bind off 5 sts, slip rem sts on holder. Cont working in St st over mid front sts, **and** bind off beg of each row 3x2, and 4x1 st = 9-11 sts. When mid piece measures 4-5 cm/1.6-2 in, bind off sts. Slip sts on holder over needles, and bind off at each side same as for mid front piece = 49-59 sts.

When back measures 5-6 cm/2-2.4 in, bind off at each edge every 2nd 4x1, 2-3x2, 1x3, 3-4x2, 3x1 st = 9-11 sts. Work 2 cm/0.8 in without dec, and leave sts on holder.

Finishing: Join crotch seam. Fold rib in double, and sew on WS. Thread elastic to the waist.

Edges: Using dpn size 2½ mm, pick or knit up approx. 64-70 sts around leg opening. Work in rnds 2 cm/0.8 in in K2,P2 rib, eyelet rnd (= *K2tog, 1 yo*) = folding edge + 2 cm/ in in rib. Bind off rather loosely. Work same for the other leg opening. Fold edges in double, and sew on WS.

Weave in all ends on WS.

Viking Bjørk – Chicago

Cardigan and trousers

1301-10

Size:	3	6	9	12	18
months					
Chest: approx.	43	47	51	55	57 cm
	16.9	18.5	20.1	21.7	22.4 in
Length: approx.	23	25	28	30	33 cm
	9.1	9.8	11	11.8	13 in
Sleeve length: approx.	2	2	2	2	2 cm
	0.8	0.8	0.8	0.8	0.8 in
Hips: approx.	42	46	47	49	52 cm
	16.5	18.1	18.5	19.3	20.5 in
Leg length: approx.	16	19	21	23	25 cm
	6.3	7.5	8.3	9.1	9.8 in

ALTERNATIVE YARN: Viking Bjørk (90% cotton, 10% merino, superwash), Viking Alpaca Silk (50% alpaca, 50% silk), 50 g ball

Viking Bjørk

Pink, 564	2	2	2	2	3 balls
White, 500	2	3	3	4	4 balls

Chicago

White/silver, 000 1 1 1 1 1 ball
 Double pointed needles and circular needle size 2½ and 3 mm –
 US 1 or 2 and 2 or 3 – UK/Canadian 13 or 12 and 11
 +5-6-6-7-7 small pearl buttons and ribbon for bows
Gauge: 25 sts = approx. 10 cm/4 in over St st using needles size 3 mm. **Check your gauge to ensure success.**

Seed st:

1st row: *K1, P1*

2nd row: Knit all purl-sts, purl all knit-sts.

Rep 2nd row.

CARDIGAN

Beg from split on right front, cast on 5-6-6-7-7 sts. Work in Seed st, and inc 1 st at split edge (left side) every 6th row (inside 1 selvage st) altog. 3-3-4-4-4 times. Leave work aside. Work rest of the front and back as foll: Cast on 85-93-99-107-113 sts. Work in Seed st, and inc 1 st at each edge every 6th row altog. 3-3-4-4-4 times = 91-99-107-115-121 sts. Cont working until edge measures same as front. Leave work aside, and work left front same as right edge, but rev all shaping. Slip all sts on same circular needle. Cont working back and forth in Seed st, and make 5-6-6-7-7 buttonholes on right front, approx. every 3 cm/1.2 in, inside 1 selvage st. Buttonhole: K2tog, 1 yo. When work measures approx. 14-15-17-19-21 cm/5.5-5.9-6.7-7.5-8.3 in, place markers each side, 55-59-65-69-73 sts for back, and 26-29-31-34-35 sts for each front. Bind off 8 sts each side (4 sts both sides of the side markers). Finish back and fronts separately.

Back

Cont working back and forth in Seed st, and beg raglan-dec: Dec 1 st beg of each row (inside 1 selvage st) altog. 14-16-18-19-20 times = 19-19-21-23-25 sts rem. Bind off.

Front

Work same as for back, altog. 10-12-13-14-15 raglan-dec. Bind off at neck edge every 2nd row 1x3-4-5-6-6, 1x2, and 2x1 st (Note! Cont raglan-dec same as before). All sts have been dec now. Work same for the other side, rev all shaping.

Sleeves

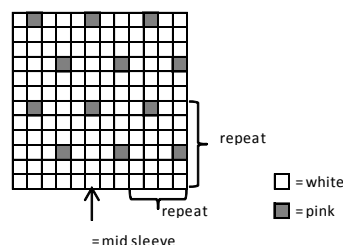
Using needles size 3 mm and pink yarn, cast on 45-49-53-57-61 sts. Work back and forth 2 cm/0.8 in in St st. Beg from RS, *K2tog – 1 yo*, rep *-* across the row = folding edge. Purl 1 row. Change to Chicago glitter yarn, Work 4 rows in Garter st. Change to white yarn, work in St st and patt as charted. When work measures 2 cm/0.8 in, (measured from folding edge), bind off 4 sts at each edge. Cont working back and forth, and work raglan-dec same as for body altog. 14-16-18-19-20 times = 9-9-9-11-13 sts rem. Bind off

Work same for the other sleeve.

Finishing

Sew all raglan-seams, and sleeve seams.

Neck band: Beg from right front, using needles size 2½ mm and white yarn, pick or knit up approx. 51-53-57-59-63 sts. Beg from RS: Change to Chicago, and work 4 rows in Garter st. Change to white yarn, and work 2 rows in St st. Next row: *K2tog – 1 yo*, rep *-* across the row = folding edge + 4 rows in St st. Bind off. Sew on buttons, and ribbons if desired.



BUKSE

Beg from lower edge of one leg:

Using needles size 3 mm and white yarn, cast on 41-43-45-47-49 sts. Work in rnds 2 cm/0.8 in in St st. Change to pink yarn, and *K2tog – 1 yo*, rep *-* across the rnd = folding edge. Knit 1 rnd. Change to Chicago glitter yarn. Work 4 rows in Garter st. Change to white yarn, and work in St st and patt as charted. 2nd rnd with white yarn: Inc evenly across number of sts to be 57-61-61-65-65 sts. Place a marker beg of the rnd. Cont working in rnds in patt, **and** inc 1 st both sides of the marker approx. every 2 ½ -3-3-3 ½ -3 cm/1-1.2-1.2-1.4-1.2 in until you have 69-73-75-77-81 sts on a rnd. When leg measures approx. 16-19-21-23-25 cm/ 6.3-7.5-8.3-9.1-9.8 in, measured from folding edge, leave work aside, and work same for the other leg.

Slip both legs on same circular needle (inc opposite to each other) = 138-146-150-154-162 sts on a rnd. Place markers mid front and back. Cont working in rnds in St st and patt, and dec 1 st both sides of the markers mid front and back, before a marker: K2togtbl; after a marker: K2tog. Rep dec every 2nd rnd altog. 8 times = 106-114-118-122-130 sts. Dec now 1 st mid front and back (for the patt to be even). Cont working in patt until work measures approx. 12-14-15-16-16 cm/4.7-5.5-5.9-6.3-6.3 in, measured from last crotch dec rnd. Work short rows: Beg mid back, work in St st, K5, turn, P10, turn, and cont working 5 sts more before each turning altog. 5-5-5-6-6 times for each side. Knit 1 rnd over all sts. Change to needles size 2½ mm. Cont working in rib for approx. 5 cm/2 in. Bind off in rib. Fold rib in double, and sew on WS. Thread elastic on waist.

Viking Bjørk – Chicago

Blanket

1301-11

Size: approx.

50x75 cm

19.7 x 27.6 in

ALTERNATIVE YARN: Viking Bjørk (90% cotton, 10% merino, superwash), Viking Alpaca Silk (50% alpaca, 50% silk), 50 g ball

Viking Bjørk

White, 500

4 balls

Chicago

White/silver, 000

1 ball

Double pointed needles and circular needle size 2½ and 3 mm – US 1 or 2 and 2 or 3 – UK/Canadian 13 or 12 and 11

Gauge: 25 sts = approx. 10 cm using needles size 3 mm. **Check your gauge to ensure success.**

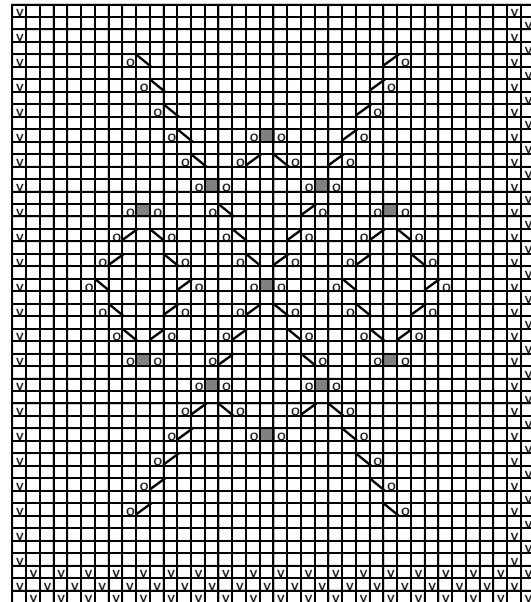
BLANKET

Using needles size 3 mm, cast on 119 sts. Cont working in patt as foll: 1 selvage st + Seed st over 1 st, X patt A over 38 sts – patt B over 38 sts – patt A over 38 sts, and end with Seed st over 2 sts + 1 selvage st (= 119 st). Cont working back and forth as established until patterns are ready. Work as foll: 1 selvage st + Seed st over 1 st - patt B – patt A – patt B – end with Seed st over 2 sts + 1 selvage st X, rep from X-X until you have 5 patt squares in height. Work 3 rows in Seed st over all sts. Bind off.

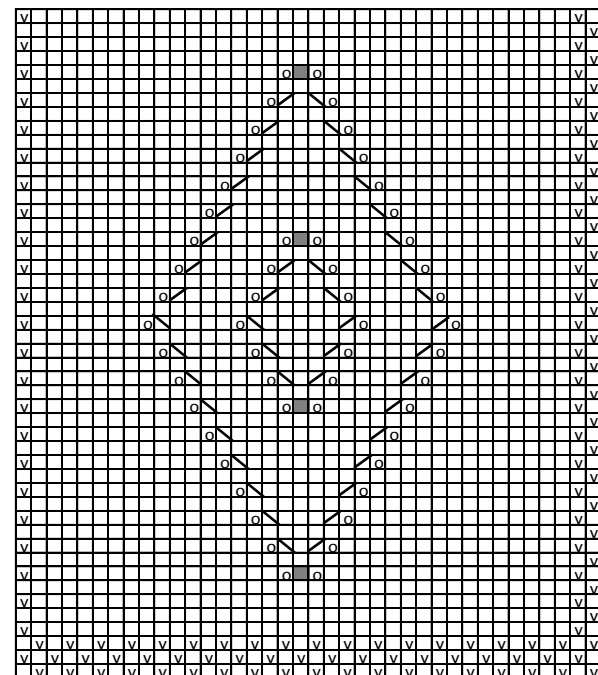
Border around the blanket:

Beg from one corner, using needles size 2½mm and Chicago glitter yarn, pick or knit up approx. 11-12 sts per each 5 cm/2 in + 1 extra st at each corner. Turn, and knit 1 row, and inc 1 st both sides of each corner st. Bind off rather loosely.

PATTERN A



PATTERN B



□ = knit (knit on RS, purl on WS)

▣ = purl (purl on RS, knit on WS)

▢ = 1 vo

▣ = K2tog

▣ = sl 1 st, K2, pssso

▣ = sl 1 st, K2tog, pssso

Viking Bjørk – Chicago

Dress

1301-12

Size:	BabyB/Prem	1	3	6 month
Chest: approx.	40	43	46	49 cm
	15.7	16.9	18.1	19.3 in
Length: approx.	33	38	40	43 cm
	13	15	15.7	16.9 in

ALTERNATIVE YARN: Viking Bjørk (90% cotton, 10% merino, superwash), Viking Alpaca Silk (50% alpaca, 50% silk), 50 g ball

Viking Bjørk

White, 500

2

3

3

4 balls

Chicago

White/silver, 000

1

1

1

1 ball

Double pointed needles and circular needle 3 mm – US 2 or 3 – UK/Canadian 11

+ 6 small pearl buttons

Gauge: 25 sts = approx. 10 cm/4 in over St st using needles size 3 mm. **Check your gauge to ensure success.**

DRESS

Using needles size 3 mm and white yarn, cast on 180-200-212-224 sts. Work back and forth 6 rows in Garter st, and after that 2 rows with Chicago in Garter st. Change to white yarn, and work 1 rnd in St st. Place markers each side, 90-100-106-112 sts for both front and back. Cont working in rnds in patt and St st as foll: St st over 35-40-43-46 sts – patt I over 20 sts – St st over 35-40-43-46 sts = front. Work same for back. Cont working in rnds as established, **and** dec 1 st each side of patt both front and back. Rep dec every 4th rnd, before patt: K2tog; after patt: sl 1 st, K1, pss0. Rep until 100-108-116-124 sts rem. Cont working without dec until work measures approx. 25-29-30-32 cm/9.8-11.4-11.8-12.6 in. Bind off 12 sts each side (6 sts both sides of the markers). Finish back and front separately.

Back

Cont working back and forth in patt and St st. When work measures approx. 33-38-40-43 cm/13-15-15.7-16.9 in, and armhole measures 8-9-10-11 cm/3.1-3.5-4-4.3 in, bind off 22-26-28-30 mid sts. Work approx. 2 cm/ in in Garter st over each shoulder with rem 8-8-9-10 sts = shoulder strap. Make buttonholes after 1 cm/0.4 in, knit 1-1-1-2 sts – bind off next 2 sts (next row: cast on 2 sts over the bound-off sts) – knit 2 sts – bind off 2 sts – end with knit 1-1-2-2 sts. Bind off when work measures given length. Work same for the other side.

Front

Cont working in patt and St st same as before. When work measures approx. 3-3-4-4 cm/1.2-1.2-1.6-1.6 in less than the total length. Bind off for neck edge 16-20-22-24 mid sts. Finish each side separately. Bind off at neck edge every 2nd row 3x1 st. When work measures same as back, bind off. Work same for the other side, rev all shaping.

Finishing

Fasten armholes from upper edge with few sts, with shoulder straps over front.

Armhole edges: Beg mid under arm, using needles size 2½ mm and white yarn, pick or knit up approx. 40-45-50-55 sts around armhole. Knit 1 row. Change to Chicago glitter yarn, and work 2 rows in Garter st, and after that 6 rows with white yarn in Garter st. Bind off.

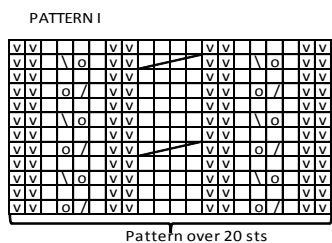
Work same for the other armhole.

Neck edge, front: Beg from left edge, using needles size 2½ mm and white yarn, pick or knit up approx. 32-34-36-38 sts. Knit 1 row. Change to Chicago glitter yarn, and work 2 rows in Garter st. Change to white yarn, and work 6 rows in Garter st. Bind off.

Neck edge, back: Work same as for front (pick up sts also from shoulder straps). Make 3rd buttonhole mid neck edge, approx. 2 sts from each outer edge.

Sew on buttons on each shoulder. Weave in all ends on WS.

NOTE! CHART FOR 1301-12 and 1301-13



- = knit
- ▤ = purl
- = 1 yo
- ▧ = K2tbl
- ▨ = K2tog
- ▬ = sl 2 sts on cn, hold to front, K2, knit sts from cn.

Viking Bjørk – Chicago

Overall

1301-13

Size:	Baby	B/Prem	1	3	6 months
Chest:	approx.	35	40	43	47 cm
		13.8	15.7	16.9	18.5 in
Length:	approx.	30	48	52	55 cm
		11.8	18.9	20.5	21.7 in
Sleeve length:	approx.	14	16	18	20 cm
		5.5	6.3	7.1	7.9 in
Leg length:	approx.	12	15	17	19 cm
		4.7	5.9	6.7	7.5 in

ALTERNATIVE YARN: Viking Bjørk (90% cotton, 10% merino, superwash), Viking Alpaca Silk (50% alpaca, 50% silk), 50 g ball

Viking Bjørk

White, 500 2 3 3 4 balls

Chicago

White/silver, 000 1 1 1 1 ball

Double pointed needles and circular needles size 3 mm – US 2 or 3 – UK/Canadian 11

+ 4-5-5-6 small white buttons

Gauge: 25 sts = approx. 10 cm/4 in over St st using needles size 3 mm. **Check your gauge to ensure success.**

Beg from lower edge of one leg. Using needles size 3 mm and white yarn, cast on 34-36-38-40 sts. Work back and forth 6 rows in Garter st. Change to Chicago glitter yarn, and work 2 rows in Garter st. Cont working in rnds, work 1 rnd in St st with white yarn. Next rnd: Inc evenly across number of sts to be 40-44-44-48 sts. Place a marker beg of the rnd (= inner seam), and another on the other side = 20-22-22-24 sts for both front and back. Cont working in rnds in patt (see chart for 1301-12): Beg from inner seam marker, St st over 0-1-1-2 sts – patt I as charted – St st over rem sts. Note! Pattern must be same for fronts of each leg. Cont working in patt, **and** inc 1 st both sides of the marker on inner seam approx. every 1-1-1-1 cm/ in until you have 60-68-72-76 sts on a rnd. When leg measures the given length, or as desired, leave work aside, and work same for the other leg (with inc and patt on the opposite side).

Slip both legs on same circular needle, inc facing each other = 120-136-144-152 sts on a rnd. Cont working in rnds in patt I same as before, and St st over rem sts. Place markers mid front and back. Dec 1 st both sides of the markers every 2nd rnd (before a marker: K2togtbl; after a marker: K2tog). Rep dec altog. 4-4-5-5 times = 104-120-124-132 sts on a rnd (cont working in patt on each side). Place markers each side, 52-60-62-

66 sts for both front and back. Cont working in rnds until work measures approx. 4-5-5-6 cm/1.6-2-2-2.4 in, measured from last dec for crotch. Bind off 6-6-6-6 mid front sts, and cont working back and forth. When work measures approx. 22-39-42-44 cm/8.7-15.4-16.5-17.3 in, divide work at each side for armholes. Finnish back and fronts separately.

Back

Cont working back and forth in St st until work measures approx. 30-48-52-55 cm/11.8-18.9-20.5-21.7 in, and armhole measures approx. 8-9-10-11 cm/3.1-3.5-4-4.3 in. Bind off.

Right front

Cont working in St st and patt until work measures approx. 27-45-48-51 cm/10.6-17.7-18.9-20.1 in. Bind off for neck edge 7-9-10-10 sts. Bind off at neck edge every 2nd row 1x3, 1x2, and 1x1 st. Cont working until front measures same as back, bind off.

Work same for left front, rev all shaping.

Sleeves

Using needles size 3 mm and white yarn, cast on 30-32-34-36 sts. Work Garter st edge same as for legs. Place a marker beg of rnd (= mid under sleeve). Cont working in rnds in patt I as foll: St st over 5-6-7-8 sts – patt over 20 sts – St st over 5-6-7-8 sts. Cont working in rnds in patt and St st, and inc 1 st both sides of the marker mid under sleeve approx. every 2 -2 -2 -1 ½ cm/0.8-0.8-0.8-0.6 in until you have altog. 40-46-50-56 sts on a rnd. When work measures approx. 14-16-18-20 cm/5.5-6.3-7.1-7.9 in (or desired length), bind off. Work same for the other sleeve.

Finishing

Join shoulder seams.

Neck band: Beg from right side, using needles size 3 mm and white yarn, pick or knit up approx. 58-60-64-66 sts. Knit 1 row. Change to Chicago glitter yarn, and work 2 rows in Garter st. Change to white Bjørk, and work 6 rows in Garter st. Bind off.

Front bands: Using needles size 3 mm and white yarn, pick or knit up approx. 34-60-60-64 sts (also from neck band). Knit 1 row. Change to Chicago glitter yarn, and work 2 rows in Garter st, and after that 6 rows with white Bjørk. Bind off. Place markers for altog. 4-5-5-6 buttons, first buttonhole is placed approx. 2 cm/0.8 in from lower edge, last one approx. 2 cm/0.8 in from upper edge, rest evenly spaced apart.

Work same for left front band, but after 2 rows with glitter yarn, make buttonholes. Buttonhole: K2tog, 1 yo.

Weave in all ends on WS. Sew on sleeves. Place front bands over each other, and sew lower edge to the body. Sew on buttons.

Viking Bjørk

Overall

1301-14

Size:	3	6	9	12	18
months					
Chest: approx.	43	47	51	55	57 cm
	16.9	18.5	20.1	21.7	22.4 in
Length: approx.	51	55	57	60	63 cm
	20.1	21.7	22.4	23.6	24.8 in
Sleeve length: approx.	17	20	22	24	26 cm
	6.7	7.9	8.7	9.4	10.2 in
Leg length: approx.	17	19	21	23	25 cm
	6.7	7.5	8.3	9.1	9.8 in

ALTERNATIVE YARN: Viking Bjørk (90% cotton, 10% merino, superwash), Viking Alpaca Silk (50% alpaca, 50% silk), 50 g ball

Off-White, 502 4 4 5 5 6 balls

Double pointed needles and circular needle size 3 mm – US 2 or 3 – UK/Canadian 11
+ 16-16-16-16-16 buttons

Gauge: 25 sts = approx. 10 cm/4 in over St st using needles size 3 mm. **Check your gauge to ensure success.**

Beg from lower edge of one leg:

Using needles size 3 mm, cast on 40-42-44-46-48 sts. Work back and forth 6 rows in Garter st. Next row: Inc evenly across number of sts to be 56-60-63-65-66 sts. Cont working back and forth in Garter st. Inc 1 st at each edge (inside selvage st) approx. every 2-2 ½-3-3 ½-3 cm/0.8-1-1.2-1.4-1.2 in until you have 68-72-75-77-80 sts on a row. When leg measures approx. 17-19-21-23-25 cm/6.7-7.5-8.3-9.1-9.8 in, measured from cast-on edge, leave work aside, and knit same for the other leg.

Slip both legs on same circular needle (open edges facing each other) = 136-144-150-154-160 sts on a rnd. Place markers mid front and back. Cont working in rnds in Garter st. Dec 1 st both sides of markers mid front and back, before a marker: K2togtbl; after a marker: K2tog. Rep dec every 2nd rnd altog. 6 times = 112-120-126-130-136 sts. Cont working in rnds until work measures approx. 4-4-5-5-5 cm/1.6-1.6-2-2-2 in, measured from last crotch dec. Place markers each side, 56-60-63-65-68 for both front and back. Slip 24-24-27-27-28 mid front sts on holder (= front piece, worked later).

Cont working back and forth until work measures approx. 41-44-45-48-50 cm/16.1-17.3-17.7-18.9-19.7 in. Divide work at sidemarkers, and finish back and fronts separately.

Back

Cont working back and forth until work measures 51-55-57-60-63 cm/20.1-21.7-22.4-23.6-24.8 in, and armhole measures approx. 10-11-12-12-13 cm/4-4.3-4.7-4.7-5.1 in. Bind off.

Right front

Cont working back and forth until work measures same as back. Bind off.

Work same for left front.

Mid front piece

Cont working back and forth in Garter st. When work measures approx. 1 ½ cm/0.6 in less than total length, bind off 12-12-15-15-16 mid sts. Finish each side separately. Bind off at neck edge every 2nd row 1x3, 1x2, and 1x1 st (all sts have been bound-off now). Work same for the other side, rev all shaping.

Front bands: Pick up approx. 88-92-96-96-100 sts. Work back and forth 2 cm/0.8 in in K2,P2 rib, but make 8 buttonholes when work measures 1 cm/0.4 in. First buttonhole approx. 2 cm/0.8 in from lower edge, last approx. 2 cm/0.8 in from neck edge, and rest evenly spaced apart. Buttonhole: Bind off 2 sts. Next row: Cast on 2 sts over the bound-off sts. When work measures 2 cm/0.8 in, bind off.

Work same for the other front band.

Sleeves

Using needles size 3 mm, cast on 36-39-40-43-43 sts. Work back and forth 4 cm/1.6 in in Garter st. Inc 1 st at each edge approx. every 2-1 ½ -1 ½ -1 ½ -1 ½ cm/0.8-0.6-0.6-0.6-0.6 in until you have 50-55-60-60-65 sts on a row. When work measures 17-20-22-24-26 cm/6.7-7.9-8.7-9.4-10.2 in (Note! Fold approx. 4 cm/1.6 in on RS before measuring the sleeve), bind off.

Work same for the other sleeve.

Finishing

Sew shoulder seams. Sew sleeve seams, and set in sleeves. Sew 16 small buttons along both front edges.

Sew leg seams. Weave in all ends on WS.

Viking Bjørk

Cardigan

1301-15

Size:	3	6	9	12	18 months
Chest:	approx. 43	47	51	55	57 cm
	16.9	18.5	20.1	21.7	22.4 in
Length:	approx. 23	25	28	30	33 cm
	9.1	9.8	11	11.8	13 in
Sleeve length:	approx. 18	20	22	24	26 cm
	7.1	7.9	8.7	9.4	10.2 in

ALTERNATIVE YARN: Viking Bjørk (90% cotton, 10% merino, superwash), Viking Alpaca Silk (50% alpaca, 50% silk), 50 g ball

Beige, 507 3 3 4 4 5 balls

Double pointed needles and circular needle size 3 mm – US 2 or 3 – UK/Canadian 11
+ 4 buttons

Gauge: 25 sts = approx. 10 cm/4 in over St st using needles size 3 mm. **Check your gauge to ensure success.**

Using needles size 3 mm, cast on 132-147-156-167-173 sts. Work back and forth in Garter st. **Note! Knit always first st, don't slip it.** Place markers each side, 39-44-46-49-51 sts for each front, and 54-59-64-69-71 sts for back. When work measures 13-14-16-17-20 cm/5.1-5.5-6.3-6.7-7.9 in, divide work at sidemarkers. Finish back and fronts separately.

Back

Cont working back and forth until work measures approx. 23-25-28-30-33 cm/9.1-9.8-11-11.8-13 in, and armhole measures approx. 10-11-12-13-13 cm/4-4.3-4.7-5.1-5.1 in. Bind off.

Right front

Work in Garter st, but make buttonholes on first row: Knit 5 sts – bind off next 3 sts (next row: cast on 3 sts over the bound-off sts) – knit 9-12-12-14-14 sts – bind off 3 sts for a buttonhole – knit rem sts. Cont working back and forth in Garter st until work measures approx. 6-7-7-8-8 cm/2.4-2.8-2.8-3.1-3.1 in, measured from the buttonholes. Make another set of buttonholes same as before. Cont working until work measures approx. 20-22-24-26-29 cm/7.9-8.7-9.4-10.2-11.4 in. Bind off for neck edge: Beg from RS, bind off first 19-22-22-24-24 sts. Cont working back and forth, and bind off at neck edge every 2nd row 1x3, 1x2, and 1x1 st. Cont working back and forth until work measures same as back. Bind off.

Work same for the other front, without buttonholes, rev all shaping.

Sleeves

Using needles size 3 mm, cast on 36-38-38-40-42 sts. Work back and forth 4 cm/1.6 in in Garter st. Inc 1 st at each edge approx. every 2-1 ½ -1 ½ -1 ½ -1 ½ -1 ½ cm/0.8-0.6-0.6-0.6-0.6 in until you have 50-56-60-66-66 sts on a row. When sleeve measures 18-20-22-24-26 cm/7.1-7.9-8.7-9.4-10.2 in (Note! Fold approx. 4 cm/1.6 in on RS before measuring), bind off.

Work same for the other sleeve.

Finishing

Join shoulder seams. Sew sleeve seams.

Hood

Beg from right front edge, using needles size 3 mm, pick or knit up sts along neck edge = approx. 86-90-92-96-98 sts. Work back and forth in Garter st. When work measures approx. 5 cm/2 in, place a marker mid back (= 43-45-46-48-49 sts for each side). Inc 1 st both sides of the marker every 6th row altog. 6 times. Cont working without inc. When work measures approx. 17-19-20-22-24 cm/6.7-7.5-7.9-8.7-9.4 in, dec 1 st both sides of the marker every 4th row until work measures approx. 20-22-23-25-

27 cm/7.9-8.7-9.1-9.8-10.6 in. Bind off. Join top seam.
Fold hood front on RS.
Sew on buttons.

Viking Bjørk

Dress

1301-16

Size:	1/3	6/9	12	18/24
Chest:	approx. 38	45	48	51 cm
	15	17.7	18.9	20.1 in
Length:	approx. 38	41	44	48 cm
	15	16.1	17.3	18.9 in
Sleeve length:	approx. 4	4	5	5 cm
	1.6	1.6	2	2 in

ALTERNATIVE YARN: Viking Bjørk (90% cotton, 10% merino, superwash), Viking Alpaca Silk (50% alpaca, 50% silk), 50 g ball

Light Violet, 567 3 3 4 5 balls

Double pointed needles and circular needle size 3 mm – US 2 or 3 – UK/Canadian 11
+ 10-11-12-13 small buttons

Gauge: 25 sts = approx. 10 cm/4 in over St st using needles size 3 mm. **Check your gauge to ensure success.**

Beg from lower edge, using needles size 3 mm, cast on 168-184-200-216 sts. Work back and forth in Garter st. Place markers each side, with 44-48-52-56 sts for left side of the back – 80-88-96-104 sts for front – 44-48-52-56 sts for right side of the back. Dec 1 st both sides of the markers every 8th row altog. 16-16-18-20 times (dec on RS), **but when work measures 2 cm/0.8 in, make a buttonhole on left side of back.** Make buttonhole as foll: Knit 2 sts – bind off 2 sts (next row: cast on 2 sts over the bound-off sts). Make buttonhole approx. every 3 ½ cm/ 1.4 in. Rep dec at each side until 104-120-128-136 sts rem (48-56-60-64 sts for front, and 28-32-34-36 sts for each back). When work measures 29-31-33-36 cm/11.4-12.2-13-14.2 in, divide work at sidemarkers. Finish front and back separately.

Back, left side

Cont working back and forth in Garter st, and bind off 5 sts for armhole at left edge. Cont working until work measures 38-41-44-48 cm/ 15-16.1-17.3-18.9 in. Note! Don't forget buttonholes, altog. 10-11-12-13, last buttonhole approx. 1 cm/0.4 in before binding off.

Work same for right side of back, without buttonholes, rev all shaping.

Front

Work same as for back. When work measures approx. 34-37-40-43 cm/13.4-14.6-15.7-16.9 in, bind off 16-16-18-20 mid sts. Finish each side separately. Bind off at neck edge every 2nd row 1x3, 1x2, and 1x1 st. When work measures same as back, bind off. Work same for the other side, rev all shaping.

Sleeves

Using needles size 3 mm, cast on 36-38-40-44 sts. Work back and forth 6 rows in Garter st. Next row (= RS) inc evenly number of sts to be 46-50-54-60 sts. Cont working in Garter st until work measures approx. 6-6-7-7 cm/2.4-2.4-2.8-2.8 in. Bind off. Sew sleeve seam, leaving approx. 2 cm/0.8 in split up. Work same for the other sleeve.

Finishing

Sew shoulder seams (back has 4 extra sts for the bands to be placed on top of each other mid back).
Sew on buttons.

Viking Bjørk

Hat and blanket

1301-17

Size 55 X 75 cm
21.7 x 29.5 in

ALTERNATIVE YARN: Viking Bjørk (90% cotton, 10% merino wool), Viking Alpaca Silk (50% alpaca, 50% silk), 50 g ball

Circular needle and double pointed needles size 2½ and 3 mm – US 1 or 2 and 2 or 3 – UK/Canadian 13 or 12 and 11

Light Pink, 565 4 balls
Violet, 569 1 ball
White, 500 1 ball
+ one extra ball pink, 565 for hat

Gauge: 25 sts = approx. 10 cm/4 in over St st using needles size 3 mm. **Check your gauge to ensure success.**

BLANKET

Using needles size 3 mm and pink yarn, cast on 125 sts. Work 2 rows in St st, and inc evenly across 2nd row number of sts to be 150 sts. Work in patt A as charted until work measures approx. 70 cm/27.6 in (end with complete patt). Work 1 row in St st, and dec evenly across number of sts to be 125 sts.

Using needles size 2½ mm and white yarn, pick or knit up 125 sts from both short edges, and approx. 175 sts from each long edge. Place markers at each corner. Work in Garter st, 2 rnds with white, and 10 rnds in violet yarn, **and** inc 1 st both sides of the markers every 2nd rnd. Bind off.

HAT

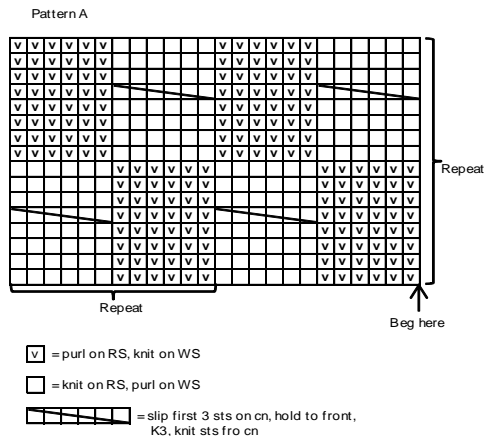
Circumference	36	38	40 cm
	14.2	15	15.7 in

Using needles size 2½ mm and violet yarn, cast on 90 – 96 – 100 sts. Work 12 rnds in Garter st with violet yarn, and 2 with white yarn. Change to needles size 3 and pink yarn. Work 2 rnds in St st, and inc evenly across 2nd rnd number of sts to be 96 – 96 – 108 sts. Work in patt A until work measures approx. 10 – 11 – 12 cm/4-4.3-4.7 in (end with a complete patt). Cont working in St st, and beg crown dec: *K10 – 10 – 10, K2tog*, rep *-* across the rnd. Knit 1 rnd. Rep dec every 2nd rnd with 1 st less between each dec until 8 – 8 – 9 sts rem. Break yarn, and thread through re sts.

Ear flaps: Using needles size 2½ mm and violet yarn, cast on 4 sts. Work back and forth in Garter st, **and** inc 1 st to 1st st beg of **each** row until you have 16 sts on a row. Work 2 rows in Garter st over all sts. Bind off.

Sew ear flaps each side, with 5 cm/2 in apart (mid back).

Twist 2 cords, approx. 30 cm/11.8 in long, and sew one to each ear flap.



Viking Bjørk

Sleeping bag

1301-18

Size: 0-3 3-6 6-9 months

Size	0-3	3-6	6-9 months
Chest	60	66	72 cm
	23.6	26	28.3 in
Length	43	45	47 cm
	16.9	17.7	18.5 in

ALTERNATIVE YARN: Viking Bjørk (90% cotton, 10% merino wool), Viking Alpaca Silk (50% alpaca, 50% silk), 50 g ball

Violet, 569 4 4 5 balls

Circular needle and double pointed needles size 2½ and 3 mm – US 1 or 2 and 2 or 3 – UK/Canadian 13 or 12 and 11
+ 2 buttons

Gauge: 25 sts = approx. 10 cm/4 in over St st using needles size 3 mm. **Check your gauge to ensure success.**

Using needles size 3 mm, cast on 150 – 164 – 180 sts. Work back and forth in Garter st. Always knit selvage st. When work measures approx. 43 – 45 – 47 cm/16.9-17.7-18.5 in, change to needles size 2½ mm. Work 1 rnd in St st, and dec evenly across number of sts to be 100 – 110 – 120 sts. Place marker to side, 50 – 55 – 60 sts for each side (open from left side). Cont working in K1,P1 rib. **When** rib measures 2 cm/0.8 in, make 2 buttonholes on front (buttonhole: bind off 3 sts, next row: cast on 3 sts over the bound-off sts): Work 16 sts, bind off 3 sts, work until 19 sts rem, bind off 3 sts, work rem 16 sts. When rib measures approx. 4 cm/1.6 in, bind off in rib.

Straps: Using needles size 3 mm and violet yarn, cast on 12 sts. Work back and forth in Garter st until work measures approx. 30 cm/11.8 in. Bind off 1 st at each edge, until all sts are bound-off. Work same for the other strap.

Finishing: Sew side and bottom seam. Sew straps mid back, 10 cm/4 in apart.

Viking Bjørk

Rompers and hat

1301-19

Size	3	6-9	12 months
Chest	51	56	61 cm
	20.1	22	24 in
Length	52	56	60 cm
	20.5	22	23.6 in
Leg length	17	20	23 cm
	6.7	7.9	9.1 in

ALTERNATIVE YARN: Viking Bjørk (90% cotton, 10% merino wool), Viking Alpaca Silk (50% alpaca, 50% silk), 50 g ball

Rompers

White, 500 3 4 5 balls

White, 500 1 1 1 ball

Circular needle and double pointed needles size 2½ and 3 mm – US 1 or 2 and 2 or 3 – UK/Canadian 13 or 12 and 11 + 5 buttons

Gauge: 25 sts = approx. 10 cm/4 in over St st using needles size 3 mm. **Check your gauge to ensure success.**

ROMPERS

Leg from lower edge of one leg

Using needles size 3 mm, cast on 60 – 68 – 76 sts. Work 4 rnds in Garter st, and then in St st until work measures approx. 2½ cm/ 1 in. Change to needles size 2½ mm. Work 2 rnds in P1,K1 rib (it's important to beg with purl-st, because when working the eyelet-rnd knit-st will be over purl-st). Next rnd = eyelet rnd: *K2tog, 1 yo*, rep *-* across the rnd. Work 2 rnds in P1,K1 rib. Change to needles size 3 mm. Work 1 rnd in St st, and inc evenly across number of sts to be 72 – 84 – 96 sts. Place a marker beg of the rnd (= inner seam). Work in patt B as charted, **and** inc 1 st both sides of the marker approx. every 2 – 2½ – 3 cm/0.8-1-1.2 in until you have 84 – 96 – 108 sts on a rnd, and leg measures approx. 17 – 20 – 23 cm/ 6.7-7.9-9.1in. Work inc sts in patt.

Leave work aside, and knit same for the other leg.

Knit sts from one leg on circular needle size 3 mm, cast on 12 sts (= crotch, front), work sts for the leg, cast on 12 sts (= crotch, back) = 192 – 216 – 240 sts on a rnd. Cont working in patt B over all sts, **and** dec as foll: Work until 1 st rem before 12 cast-on sts, sl 1 st, K1, psso, K10, K2tog. Rep dec front and back every rnd, with 1 st less between dec each time until all cast-on sts are dec. Cont dec as foll: Work until 2 sts rem before mid front, K2tog, sl 1 st, K1, psso. Rep dec mid back. Cont working in patt B, and rep dec every 2nd rnd 6 times = 144 – 168 – 192 sts rem. When work measures approx. 7 – 8 – 9 cm/2.8-3.1-3.5 in (measured from crotch), divide work 3 sts before mid back. Cont working back and forth. Cast on 6 sts to the end of row. Work Garter st over first and last 6 sts, and cont working in patt B over rem sts. Make buttonholes 2 sts inside the left edge, 2 sts inside (buttonhole: bind off 2 sts, next row: cast on 2 sts over the bound-off sts. Make first buttonhole after 4 – 4 – 5 cm/1.6-1.6-2 in, and approx. every 4 – 4 – 5 cm/1.6-1.6-2 in spaced apart.

When work measures approx. 42 – 44 – 47 cm/16.5-17.3-18.5 in (end with a complete patt), work 1 row in St st, and dec evenly across number of sts to be 122 – 134 – 146 sts (not over Garter st edges). Make a buttonhole on this row. Slip first and last 6 sts on holder. Work as foll with rem sts: 6 rows in St st, eyelet row (same as for leg), 5 rows in St st. Pick up sts from 1st St st row on needle size 2½ mm. Slip sts from holders over the needle, and work as foll: Garter st over 6 sts, knit sts tog in pairs (= 1 st from each needle), end with Garter st over 6 sts. Cont working over all sts.

Divide work at each side, 64 – 70 – 76 sts for front, and 35 – 38 – 41 sts for back. Next row: Bind off at each side 8 sts for armholes (4 sts both sides of the markers). Finish first left side of back.

Back, left side: Cont working back and forth in St st, Garter st, and buttonholes. Bind off at armhole edge every 2nd row 1x2, and 1x1 st. When work measures approx. 8 – 9 – 10 cm/3.1-3.5-4 in (measured from folding edge), make last buttonhole. Slip first 6 sts on holder, and bind off next 4 sts for neck edge. Bind off at neck edge every 2nd row 1x6, 1x2, and 1x1 st. When work

measures approx. 10 – 11 – 12 cm/4-4.3-4.7 in, and 9 – 12 – 15 sts rem for shoulder, bind off.

Work same for right side, without buttonholes, rev all shaping.

Front: Work same as for back. When work measures approx. 5 – 6 – 7 cm/2-2.4-2.8 in (measured from folding edge), bind off 12 mid sts for neck edge. Finish each side separately.

Right front: Bind off at neck edge every 2nd row 1x4, 1x3, 1x2, and 1x1st. When work measures same as back, bind off.

Left front: Work same as for right front, rev all shaping.

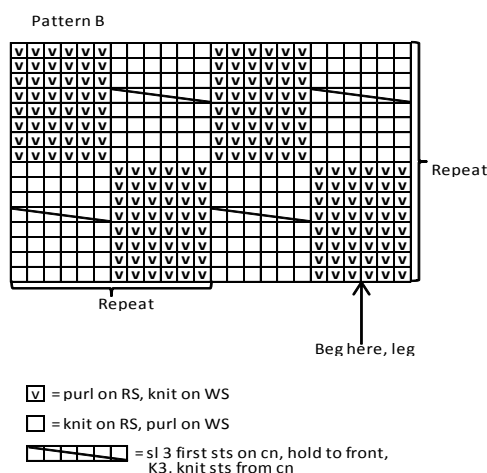
Finishing: Sew shoulder and crotch seams.

Neck band: Slip sts from holders on needles size 2½ mm, pick or knit up approx. 60 – 60 – 62 sts. Cont working in Garter st over first and last 6 sts, and 5 rows in St st over rem sts. Bind off first and last 6 sts, knit an eyelet row, and after that 5 rows in St st. Bind off.

Finishing: Fold edges (= neck edge, and front edges) in double, and sew on WS.

Armhole edge: Using needles size 2½ mm, pick or knit up approx. 56 – 60 – 64 sts. Work 5 rnds in St st, eyelet rnd, and 5 rnds in St st. Fold edge in double, and sew on WS.

Work same for the other armhole edge.



Hat

Using needles size 2½ mm, cast on 72 – 78 – 84 sts. Work back and forth 2 cm/0.8 in in K1,P1 rib. Change to needles size 3 mm, and work 2 rows in Garter st. Cont working in patt B, and inc evenly across 1st row number of sts to be 90 – 96 – 102 sts. When work measures approx. 10 – 11 – 12 cm/4-4.3-4.7 in, knit a folding edge (see rompers). Bind off 30 sts at each edge. Cont working approx. 12 cm/4.7 in in patt A over 30 – 36 – 42 mid sts.

Finishing: Sew back tog with bound-off side sts.

Using needles size 2½ mm, pick or knit up 32 – 35 – 38 sts along right side, sts mid back (= over the needle), and 32 – 35 – 38 sts along left side. Work back and forth in K1,P1 rib. Knit an eyelet row after 1 cm/ in (see rompers), and cont working in K1,P1 rib, until edge measures approx. 2 cm/0.8 in. Bind off in rib. Twist a cord, approx. 80 cm/31.5 in, and thread through the eyelet row.

Viking Bjørk

Overall

1301-20

Size:	0/1	3	6	9 months
Chest	44	46	50	52 cm
	17.3	18.1	19.7	20.5 in
Length	45	50	55	60 cm
	17.7	19.7	21.7	23.6 in
Sleeve length:	16	18	20	22 cm
	6.3	7.1	7.9	8.7 in
Leg length:	15	17	19	21 cm
	5.9	6.7	7.5	8.3 in

ALTERNATIVE YARN: Viking Bjørk (90% cotton, 10% merino wool), Viking Alpaca Silk (50% alpaca, 50% silk), 50 g ball

Overall

Light Blue, 520 3 4 4 5 balls

Hat and booties

Light Blue, 520 1 1 1 1 ball

Circular needle and double pointed needles size 2½ and 3 mm – US 1 or 2 and 2 or 3 – UK/Canadian 13 or 12 and 11 + 6 – 6 – 6 – 6 buttons

Gauge: 25 sts = approx. 10 cm/4 in over St st using needles size 3 mm. **Check your gauge to ensure success.**

Gauge, patt A= : 20 sts = approx. 10 cm/4 in over St st using needles size 3 mm.

Pattern A, worked in rnds:

1st rnd (after rib): *K1 – purl-sts (RS): K1 below (see photo 1, don't slip the st on RH needle), K1tfl (see photos 2 and 3), so that you have 1 yo + 1 st over the needle*, rep *-* across the rnd
2nd rnd: Purl (purl 1st, Ptog 1 st + yo).
3rd rnd: *K1 below, K1tbl (= 1 yo + 1 st), K1*, rep *-* across the rnd.

4th rnd: Purl (Ptog 1 st + yo, purl 2nd st).

Rep 1st - 4th rnd.

When patt is worked back and forth, purl 2nd and 4th rows.

Photo 1:



= knit from purl-st below

Photo 2:



= draw yarn through

Photo 3:



= sl sts on RH needle = 1 st + yo

Beg from lower edge of one leg

Using needles size 2½ mm, cast on 44 – 46 – 48 – 48 sts. Work back and forth approx. 4 – 4 – 5 – 5 cm/1.6-1.6-2-2 in in K1,P1 rib. Change to needles size 3 mm. Place a marker beg of rnd (= inner seam). Work in patt A, **and** inc 1 st both sides of the marker approx. every 2½ – 3 – 2½ – 2 cm/1-1.2-1-0.8 in (in either on 2nd or 4th rnd). Cont inc until you have 52 – 54 – 58 – 62 sts on a rnd, and leg measures approx. 15 – 17 – 19 – 21 cm/5.9-6.7-7.5-8.3 in

Leave work aside, and knit same for the other leg.

Knit sts from one leg on circular needle size 3 mm, cast on 12 sts (= crotch, front), work sts for the other leg, and cast on 12 sts (= crotch, back) = 128 – 132 – 140 – 148 sts on a rnd. Cont working in patt A over all sts, **and** dec as foll: Work until 1 st rem before 12 cast-on sts, sl 1 st, K1, pssso, K10, K2tog. Rep dec on back.

Rep dec every rnd, with 1 st less between dec each time. After all cast-on sts are dec, dec as foll: Work until 2 sts rem before mid front, K2tog, sl next st, K1, pssso. Rep dec mid back. Cont working in patt A, and rep dec every 2nd rnd 4 – 4 – 4 – 5 times = 88 – 92 – 100 – 104 sts on a rnd. Place markers mid front and back, and each side, 22 – 23 – 25 – 26 sts between markers.

When work measures approx. 6 – 7 – 8 – 9 cm/ 2.4-2.8-3.1-3.5 in (measured from crotch), divide work 3 sts before mid front marker. Cont working back and forth (check that 2nd and 4th patt rows will be on WS). Cast on 6 sts to the end of row. Work Garter st over first and last 6 sts, and cont working in patt A over rem sts. Make buttonholes on right front edge inside 2 sts (buttonhole: bind off 2 sts, next row: cast on 2 sts over the bound-off sts). Make first buttonhole after 4 – 4 – 5 – 5 cm/1.6-1.6-2-2 in, and after that approx. 4 – 4 ½ – 4 ½ – 5 cm/1.6-1.8-1.8-2 in spaced apart.

When work measures approx. 35 – 40 – 44 – 48 cm/ in, bind off 10 – 10 – 12 – 12 sts each side for armholes (5 – 5 – 6 – 6 sts both sides of the markers). Remember to check that 2nd and 4th patt rows will be on WS.

Sleeves: Using needles size 2½ mm, cast on 32 – 34 – 36 – 40 sts. Work in rnds 4 – 4 – 5 – 5 cm/1.6-1.6-2-2 in in K1,P1 rib. Change to needles size 3 mm. Place a marker beg of the rnd (= inner seam). Work in patt A, **and** inc 1 st both sides of the marker approx. every 3 – 3½ – 3½ – 4 cm/1.2-1.4-1.4-1.6 in (inc either on 2nd or 4th patt rnd). Rep inc until you have 40 – 42 – 44 – 48 sts on a rnd, and sleeve measures approx. 16 – 18 – 20 – 22 cm/6.3-7.1-7.9-8.7 in.

Bind off 10 – 10 – 12 – 12 sts mid under sleeve (5 – 5 – 6 – 6 sts both sides of the marker). Check that 2nd and 4th patt rows will be on WS. Leave work aside, and knit same for the other sleeve.

Yoke: Slip all pieces on same circular needle size 3 mm, sleeves over sts bound-off for armholes (= 134 – 142 – 146 – 158 sts). Place markers at each 4 seamlines. Cont working back and forth in patt A, Garter st over first and last 6 sts, making buttonholes, **and** beg raglan-dec: Work until 2 sts rem before a marker, sl next st, K1, pssso, K2tog. Rep dec at each seamline every 4th row altog. 3 times (keep working in patt, and purl on WS, also over raglan-dec), 3 rows without dec: Work seamline sts in Garter st, and after that rep dec every 2nd row until 62 – 70 – 74 – 78 sts rem (= 9 – 9 – 9 – 10 dec). Change to needles size 2½ mm, and

cont working in K1,P1 rib (also over front edges). Beg from RS: *Purl the purl-st, K1 below*, rep*-* across 1st row. Cont working in normal K1,P1 rib, until neck band measures approx. 1 ½ – 1 ½ – 2 – 2 cm/0.6-0.6-0.8-0.8 in (remember to make last buttonhole beg of neck band).

Finishing:

Sew seams under arm. Sew on buttons.

HAT

Using needles size 3 mm, cast on 28 – 32 – 36 – 40 sts. Work back and forth in Garter st, **and** dec 1 st inside 2 sts from the edge (= beg of row), inc 1 st inside 2 sts from the edge (= end of row), rep every 2nd row 12 – 14 – 16 – 18 times. **Inc** 1 st inside 2 sts (= beg of row), and dec 1 st inside 2 sts (= end of row), rep every 2nd row 12 – 14 – 16 – 18 times. Dec 1 st inside 2 sts (= beg of row), and inc 1 st inside 2 sts (= end of row), rep every 2nd row 6 – 7 – 8 – 9 times. **Inc** 1 st inside 2 sts (= beg of row), and dec 1 st inside 2 sts (= end of row), rep every 2nd row 6 – 7 – 8 – 9 times. **Dec** 1 st inside 2 sts (= beg of row), and inc 1 st inside 2 sts (= end of row), rep every 2nd row 12 – 14 – 16 – 18 times. Inc 1 st inside 2 sts (= beg of row), and dec 1 st inside 2 sts (= end of row), rep every 2nd row 12 – 14 – 16 – 18 times.

Finishing: Join sts with cast-on edge (= mid back seam). Sew top seams, first 6 – 7 – 8 – 9 rills, then 12 – 14 – 16 – 18 rills both sides of mid back seam. Twist 2 cords, and sew one on each side.

BOOTIES

Beg mid under sole

Using needles size 3 mm, cast on 30 – 34 – 38 – 42 sts. Knit 1 row. Place a marker, with 15 – 17 – 19 – 21 sts for each side Work in Garter st, **and** inc as foll: Inc 1 st to first st, inc 1 st both sides of the marker = mid front, 1 inc 1 st to 2nd st from the end of the row. Knit 1 row. Next row: Inc 2 sts to 2nd st, 2 sts both sides of the marker and 2 sts to 3rd st from the end of the row. Cont inc in the same way until you have 4 – 4 – 5 – 6 sts each side of the marker mid front = 46-50-58-66 sts. Work 4 rows in Garter st over all sts without inc.

Cont working in Garter st as foll: K18 – 20 – 24 – 28, K2tog, 1 yo, sl 1 st, K1, pssso, K2, K2tog, 1 yo, sl 1 st, K1, pssso, K18 – 20 – 24 – 28. Turn, K17-19-23-27, sl 1 st, K1, pssso, K6, K2tog, knit rem sts. Cont working in the same way, both on RS and WS, with 1 st less beg and end of the row each time altog. 5 – 5 – 6 – 7 times = 26 – 30 – 34 – 38 sts rem. Work 10 – 10 – 12 – 12 rows in Garter st over all sts. Bind off. Sew mid back and sole seam.

Work same for the other bootie. Sew elastic inside last 5-5-6-6 rills.

Twist 2 cords, each approx. 40 – 40 – 45 – 45 cm/15.7-15.7-17.7-17.7 in long. Thread cords as shoelaces to the fronts.

Viking Bjørk – cotton/merino

Sweater and shorts 1301-21

Size:	3	6	9	12	18 months
Chest: approx.	43	48	51	54	58 cm
	16.9	18.9	20.1	21.3	22.8 in
Length: approx.	22	24	27	29	32 cm
	8.7	9.4	10.6	11.4	12.6 in
Sleeve length: approx.	18	20	22	24	26 cm
	7.1	7.9	8.7	9.4	10.2 in

ALTERNATIVE YARN: Viking Bjørk (90% cotton, 10% merino, superwash), Viking Alpaca Silk (50% alpaca, 50% silk), 50 g ball

Sweater

Dark Grey, 515	1	1	1	1 ball
Off-White, 502	1	2	2	3 balls
Light Blue, 520	1	1	1	1 ball
Beige, 507	1	1	1	1 ball
Shorts	3	6/12	18 months	
Light Blue, 520	1	2	2	2 balls

Double pointed needles and circular needle size 2½ and 3 mm – US 1 or 2 and 2 or 3 – UK/Canadian 13 or 12 and 11 + crochet hook size 2½ mm – US B/1 or C/2 – UK/Canadian 13 or 12

+ 2 buttons and elastic for shorts

Gauge: 25 sts = approx. 10 cm/4 in over St st using needles size 3 mm. **Check your gauge to ensure success.**

SWEATER

Using needles size 3 mm and grey yarn, cast on 108-120-128-136-144 sts. Work 1 rnd in K2,P2 rib. Cont working as foll: K2 with off-white, P2 with dark grey. Cont working in rnds until rib measures approx. 5-6-6-7-7 cm/2-2.4-2.4-2.8-2.8 in. Change to light blue yarn, and work 4 rnds in St st. Change to beige, and work 4 rnds in St st. Place markers each side, 54-60-64-68-72 sts for both front and back. Cont working in rnds in off-white until work measures approx. 12-13-15-17-19 cm/4.7-5.1-5.9-6.7-7.5 in. Divide work at sides, and finish back and front separately.

Back

Cont working back and forth in St st same as before until armhole measures approx. 6 ½ - 7 ½ - 8 ½ - 8 ½ - 9 ½ cm/2.6-3-3.3-3.3-3.7 in. Divide work mid back, and cont working in patt as charted. End patt as charted, and after that with grey yarn (leave sts on holder). Work same for the other side.

Front

Work same as for back, but same time when you beg working in patt, bind off for neck edge 16-18-20-22-24 mid sts. Finish each side separately. Bind off at neck edge every 2nd row 1x3, 1x2, and 1x1 st. When work measures same as back, bind off. Work same for the other side, rev all shaping.

Sleeves

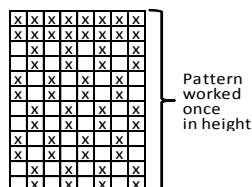
Using needles size 3 mm and dark grey yarn, cast on 32-36-36-40-44 sts. Work ribbed edge same as for body. Place marker mid under sleeve. When ribbed edge is ready, change to light blue yarn. Knit 1 rnd. Knit another rnd, and inc evenly across number of sts to be 50-56-60-60-66 sts. Work 2 more rnds with light blue yarn. Change to beige yarn, and work 4 rnds in St st. Change to off-white yarn, and work in rnds in St st until work measures the given length. Bind off. Work same for the other sleeve.

Finishing

Join shoulder seams.

Neck band: Beg from mid back, using needles size 2½ mm and dark grey yarn, pick or knit up approx.70-74-78-78-82 sts around neck edge. Work back and forth approx. 2 cm/0.8 in in K1,P1 rib. Knit 1 row from WS (= folding edge) + 2 cm/0.8 in rib. Bind off rather loosely. Fold neck band in double, and sew on WS.

Using crochet hook size 2½ mm and dark grey yarn, crochet 1 sc row along split edges. Make 2 buttonhole loops (= chain sts), one mid neck band, and the other approx. 3 cm/1.2 in below. Sew on buttons. Set in sleeves. Weave in all ends on WS.



SHORTS (3 - 6/12 - 18 months)

Beg from waist. Using a short circular needle size 3 mm, cast on 100-112-120 sts. Work in rnds 6 cm/2.4 in in K1,P1 rib, but after 3 cm/ in purl one rnd (= folding edge). Work 1 rnd in St st, and inc evenly across 8 sts = 108-120-128 sts on a rnd. Place markers each side, 55-61-65 sts for back, and 53-59-63 sts for front. Beg mid back, and work short rows: Place a marker around mid back and front st. Beg from mid back, K5-6-6, turn, P11-13-13. Cont working in the same way, 5-6-6 sts more after each turning altog. 5 times each side. Work back to mid back, and cont working in rnds in St st. When work measures 14-16-18 cm/5.5-6.3-7.1 in – measured mid front, inc 1 st both sides mid sts front and back every 2nd rnd altog. 5 times = 11 inc sts both front and back. Bind off these 11 sts both front and back, and slip rem sts on needles. Cont working in rnds in St st until leg measures approx. 5-6-6-7-7 cm/2-2.4-2.4-2.8-2.8 in. Purl 1 rnd (= folding edge) + 2 cm/0.8 in St st. Bind off sts. Work same for the other leg. Fold edges double, and sew on WS. Fold upper edge in double, and sew on WS. Thread elastic to the waist. Weave in all ends on WS.

Viking Bjørk

Blanket

1301-23

Size: approx. 65x75 cm
25.6 x 29.5 in

ALTERNATIVE YARN: Viking Bjørk (90% cotton, 10% merino, superwash), Viking Alpaca Silk (50% alpaca, 50% silk), 50 g ball

Blanket

Dark Violet, 569 5 balls
Light Violet, 567 1 ball
Beige, 507 1 ball
Off-White, 502 1 ball
Light Grey, 513 1 ball
Dark Grey, 515 1 ball

Double pointed needles and circular needle size 3 mm – US 2 or 3 – UK/Canadian 11

Gauge: 25 sts = approx. 10 cm/4 in over St st using needles size 3 mm. **Check your gauge to ensure success.**

Note! Blanket is worked in long strips joined together.

1st strip: Using needles size 3 mm and dark grey yarn, cast on 23 sts. Work back and forth approx. 12 cm/4.7 in in Garter st. Count the number of rills, and work next squares the same, see clrs from the chart. **Note! Always knit first st, don't slip it.** Work all 6 strips in the same way as 1st one, **but** with clrs as charted.

When all strips are ready, sew them tog.

Ruffled edge with dark violet yarn:

Beg from one of the long sides, using needles size 3 mm, knit up approx. 23 sts per each 10 cm/4 in (or approx. 180 sts). Knit 1 row (= WS).

1st row: (= RS) K1, (= selvage st = knit every row), K1, *P1, K1, P1*, rep *-* across the row, and end with K1 + 1 selvage st.

2nd row: (= WS) 1 selvage st, P1, *K1, 1 yo, P1, 1 yo, K1*, rep *-* across the row, and end with P1 + 1 selvage st.

3rd row: (= RS) 1 selvage st + K1, *P1, 1 yo, K3, 1 yo, P1*, rep *-* across the row, and end with K1 + 1 selvage st.

4th row: (= WS) 1 selvage st + K1, *K1, 1 yo, P5, 1 yo, K1*, rep *-* across the row, and end with P1 + 1 selvage st.

Cont inc on each RS row on each knit-panel (seen from RS) until edge measures approx. 3 cm/1.2 in. Bind off. Work same for the other long side, and both short sides (Note! Pick up approx. 150

sts). Sew seams in each corner, and weave in all ends on WS.

STRIP: 6 5 4 3 2 1

light violet	beige	off-white	light grey	dark grey	dark violet
beige	off-white	light grey	dark grey	dark violet	light violet
off-white	light grey	dark grey	dark violet	light violet	beige
light grey	dark grey	dark violet	light violet	beige	off-white
dark grey	dark violet	light violet	beige	off-white	light grey
dark violet	light violet	beige	off-white	light grey	dark grey

Viking Bjørk

Hat

1301-24

Size: 3/6 9/12 18/24

months

ALTERNATIVE YARN: Viking Bjørk (90% cotton, 10% merino wool), Viking Alpaca Silk (50% alpaca, 50% silk), 50 g ball

Hat

Violet, 569 1 1 1 ball

Circular needle and double pointed needles size 2½ and 3 mm – US 1 or 2 and 2 or 3 – UK/Canadian 13 or 12 and 11

Gauge: 25 sts = approx. 10 cm/4 in over St st using needles size 3 mm. **Check your gauge to ensure success.**

Using needles size 2½ mm, cast on 77 – 85 – 91 sts. Work back and forth 2 cm/0.8 in in K1,P1 rib. Change to needles size 3 mm, and work 2 rows in Garter st. Cont working in patt B, and inc evenly across 1st row number of sts to be 94 – 103 – 109 sts. When work measures approx. 10 – 11 – 12 cm/4-4.3-4.7 in, dec 1 st inside selvage st beg of row (= sl 1 st, knit next st, pssso) and end of row (K2tog). Rep dec every 2nd row altog. 10 times, and then every row until 8-9-9 sts rem. Bind off.

Neck band: Beg from RS, using needles size 2½ mm, pick or knit up approx. 26 – 28 – 30 sts from one of the short edges, and approx. 26 – 28 – 30 sts from the other short edge = 52 – 56 – 60 sts. Work back and forth 6 rows in K1,P1 rib, **but** on 3rd row knit an eyelet row: *K2tog, 1 yo*, rep *-* across the row. Bind off in rib.

Finishing:

Twist a cord, approx. 80 cm/31.5 in long, and thread through the eyelet row.

Pattern B

		V		V		V		V
V		V		V		V		V
V		V		V		V		V
V		V		V		V		V

Repeat

□ = Knit on RS, purl on WS

▣ = Purl on RS, knit on WS

▤ = Knit 2nd st from back, and after that knit 1st st

