

Viking Superwash

Poncho

1213-1

Size	Woman
Bust	139 cm
	54.8 in
Length, approx.	50 cm
	19.7 in

ALTERNATIVE YARN: Viking Superwash (100% wool, superwash), Viking Alpaca Sport (30% alpaca, 40% merino wool, 30% nylon), Viking Sportsragg (60% wool, 20% nylon, 20% acrylic), Viking Sportsgarn (100% wool), 50 g ball

Off-White, 102

14 balls

Circular needle and double pointed needles size 3 and 3½ mm – US 2 or 3 and 4 – UK/Canadian 11 and 10 or 9

Gauge: 23 sts = approx. 10 cm/4 in over St st using needles size 3½ mm. **Check your gauge to ensure success.**

PONCHO

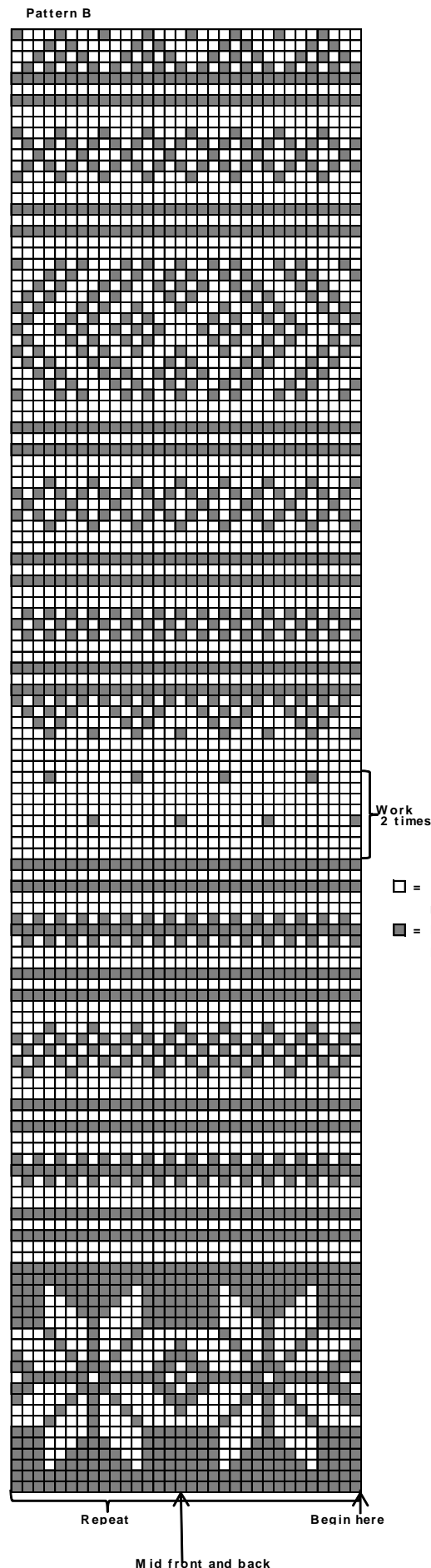
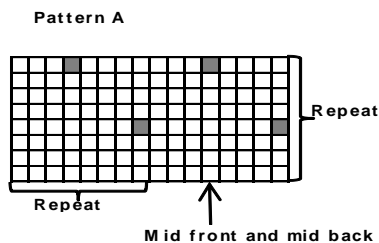
Using needles size 3mm, cast on 320 sts. Work 5 cm/2 in in K2,P2 rib. Change to needles size 3½ mm. Place markers around mid sts each side, mid front and back = 79 sts for each panel + mid sts. Beg from mid back. Knit 5 sts, turn, purl 9 sts. Turn, and work each time 3 sts more, and work in patt A. Turn altog 50 times (25 times at each side), ending at one side.

Beg now from mid front. Knit 8 sts, purl 15 sts. Turn, and work each time 6 sts more, and work in patt A. Turn altog. 24 times (12 times at each side), ending at one side. Back piece is longer than front.

Work in patt B over all sts, and dec 1 st both sides of sidemarkers approx every 1½ cm/0.6 in altog. 20 times = 240 sts rem. When patt B is ready, cont working in St st. After 4 rnds, beg yoke dec: *K6, K2tog*, rep *-* across the rnd. Rep dec every 4th rnd with 1 st less between each dec altog. 5 times = 90 sts. Change to needles size 3 mm. Knit 1 rnd, and dec evenly across number of sts to be 96 sts. Work 24 cm/9.4 in in rnds K2,P2 rib. Bind off in rib. Spread the garment under a damp cloth, and leave to get dry.

WRISTWARMERS

Cast on 64 sts. Work 30 cm/11.8 in in K2,P2 rib. Bind off in rib. Work same for the other wristwarmer.



Viking Superwash

Hat 1213-2

Size	Adult
Circumference	52 cm 20.5 in

ALTERNATIVE YARN: Viking Superwash (100% wool, superwash), Viking Alpaca Sport (30% alpaca, 40% merino wool, 30% nylon), Viking Sportsragg (60% wool, 20% nylon, 20% acrylic), Viking Sportsgarn (100% wool), 50 g ball

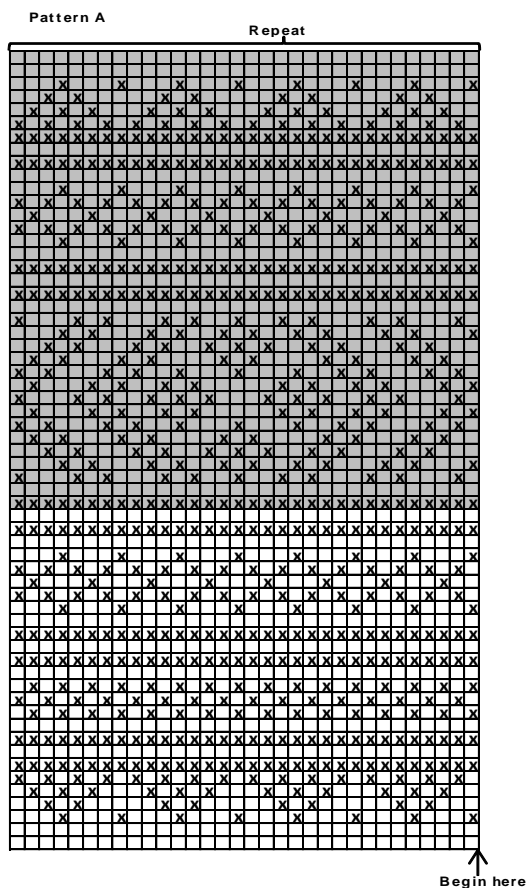
Beige, 107	1 ball
Off-White, 102	1 ball
Brown, 118	1 ball

Circular needle and double pointed needles size 3 and 3½ mm – US 2 or 3 and 4 – UK/Canadian 11 and 10 or 9

Gauge: 23 sts = approx. 10 cm/4 in over St st using needles size 3½ mm. **Check your gauge to ensure success.**

HAT

Using needles size 3 mm and beige yarn, cast on 120 sts. Work 6 cm/2.4 in in K1,P1 rib. Change to needles size 3½ mm, and work in patt A. Inc evenly across 1st rnd number of sts to be 128 sts. When patt A is ready, cont working with off-white yarn, and beg crown dec: *Knit all sts tog in pairs, work 2 rnds in Garter*, rep *-* 4 times until 8 sts rem on a rnd. Break yarn, thread through rem sts, pull tightly, and weave in on WS.



- = Off-white
- = Brown
- = Brown
- = Beige

Viking Superwash

Hat 1213-3

Size	Adult
Circumference	52 cm 20.5 in
Length	28 cm 11 in

ALTERNATIVE YARN: Viking Superwash (100% wool, superwash), Viking Alpaca Sport (30% alpaca, 40% merino wool, 30% nylon), Viking Sportsragg (60% wool, 20% nylon, 20% acrylic), Viking Sportsgarn (100% wool), 50 g ball

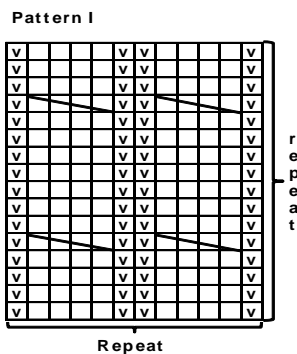
Violet, 168	4 balls
-------------	---------

Circular needle and double pointed needles size 3 and 3½ mm – US 2 or 3 and 4 – UK/Canadian 11 and 10 or 9

Gauge: 23 sts = approx. 10 cm/4 in over St st using needles size 3½ mm. **Check your gauge to ensure success.**

HAT

Using needles size 3 mm, cast on 132 sts. Work *K1,P1 rib over 21 sts, patt I over 12 sts*, rep *-* 4 times. Work as established until work measures approx. 7 cm/2.8 in (end patt as charted). Change to needles size 3½ mm. Inc evenly across each rib panel to be 36 sts = 192 sts on a rnd. Work in patt I until work measures approx. 26 cm/10.2 in. Next rnd: Dec all purl-sts. Sl last knit-st of each cable, K1, psso. K2tog. K2. Rep dec over each cable across the rnd = 128 sts rem. Cont working in rnds in St st: *Knit all sts tog in pairs. Work 2 rnds in St st*. Rep dec altog. 4 times until 8 sts rem. Break yarn, thread through rem sts, pull tightly, and weave in on WS.



- = knit
- = purl
- = Slip 2 sts on cn, and hold to front, K2, knit sts from cn

Viking Superwash

Hat 1213-4

Size	Woman
Circumference	52 cm 20.5 in

ALTERNATIVE YARN: Viking Superwash (100% wool, superwash), Viking Alpaca Sport (30% alpaca, 40% merino wool, 30% nylon), Viking Sportsragg (60% wool, 20% nylon, 20% acrylic), Viking Sportsgarn (100% wool), 50 g ball

Wine, 162 3
balls

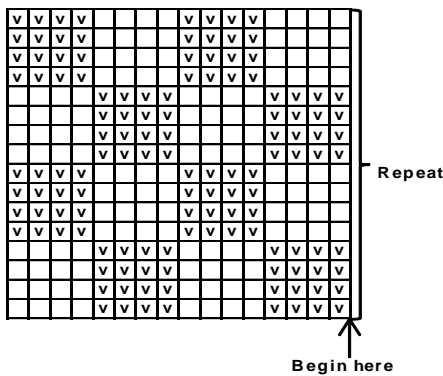
Circular needle and double pointed needles size 3 and 3½ mm – US 2 or 3 and 4 – UK/Canadian 11 and 10 or 9

Gauge: 23 sts = approx. 10 cm/4 in over St st using needles size 3½ mm. **Check your gauge to ensure success.**

HAT

Using needles size 3 mm, cast on 120 sts. Work 8 cm/3.1 in in K3,P3 rib. Change to needles size 3½ mm. Work in patt I, and inc 1 st to every 3rd st = 1 square over each purl-panel. Work and rep patt I until work measures approx. 22 cm/8.7 in. End with a complete square. Beg crown dec. Dec for each square as foll: Work 2 sts, work 2 sts tog (knit/purl according to the square), and cont working in patt I with 1 st less for width of each square. Cont dec for each square with 1 st less between dec until 40 sts rem. Knit all sts tog in pairs. Rep dec altog. 2 times, with 1 rnd between dec. Break yarn, thread through rem 10 sts, and weave in on WS.

Pattern I



Viking Superwash

Capelet and socks 1213-5

Size	Woman
------	-------

ALTERNATIVE YARN: Viking Superwash (100% wool, superwash), Viking Alpaca Sport (30% alpaca, 40% merino wool, 30% nylon), Viking Sportsragg (60% wool, 20% nylon, 20% acrylic), Viking Sportsgarn (100% wool), 50 g ball

CAPELET

Black, 103 5 balls
Light Grey, 113 3 balls

LONG SOCKS

Black, 103 6 balls
Light Grey, 113 3 balls

Circular needle size and double pointed needles size 3 and 3½ mm – US 2 or 3 and 4 – UK/Canadian 11 and 10 or 9
+ crochet hook size 3 mm – US C/2 or D/3 – UK/Canadian 11

Gauge: 23 sts = approx. 10 cm/4 in over St st using needles size 3½ mm. **Check your gauge to ensure success.**

When working in a patt with 2 clr, it's important to maintain order of clr over your finger. Always hold darker clr in front throughout the whole project.

CAPELET WITH HOOD

Using needles size 3 mm and grey yarn, cast on 120 sts. Work back and forth patt I. Change to needles size 3½ mm. Cont working back and forth 2 rows in St st. Leave work aside, and knit same for another piece (= front and back). Beg from back, using black yarn, K120, dec 1 st = 119 sts (place a marker), cast on 73 sts (place a marker), K120 for front, dec 1 st = 119 sts (place a marker), and cast on 73 sts (place a marker) = 384 sts. Work in patt II as charted, **and** beg raglan-dec at all 4 seamlines: Work until 2 sts rem before a marker, sl 1, K1, pssso, K2. Rep dec at each 4 seamlines every 2nd rnd until patt II is ready, and you have 112 sts on a rnd. Change to needles size 3 mm. Knit 1 rnd with black yarn, and after that K1, P1.

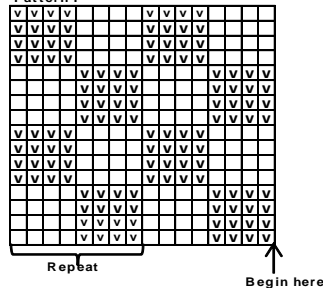
Hood: When neck band measures 2 cm/0.8 in, bind off mid front st. Cont working back and forth. Inc 2 sts 3 times over each shoulder: Work until a knit-st, approx. 7 sts before shoulder. Inc 1 st into this st + 1 st into next purl-st. Rep inc after 5 sts altog. Rep inc over the other shoulder. Cont working in rib, and rep inc after 4 cm/1.6 in. When neck band measures approx. 6 cm/2.4 in, change to needles size 3½ mm. Cont working in patt III in rnds. Cast on 4 sts mid front (= purl each rnd, and will be cut open later on). Place a marker to mid back st (= knit with black yarn every rnd). Pattern is worked in reverse after mid st. When hood measures (measured from rib) 2cm/0.8 in, inc 1 st both sides of mid back marker. Rep inc approx. every 4 cm/1.6 in altog. 6 times. When hood measures approx. 28 cm/11 in, **dec** 1 st both sides of mid back marker. Rep dec every 4th rnd 3 times, and then every 2nd rnd until hood measures approx. 36 cm/ 14.2in. Bind off.

Finishing: Dampen work slightly from WS. Sew 2 smallest zigzag seams mid front hood. Cut open between seams. Sew normal zigzag over cut edges.

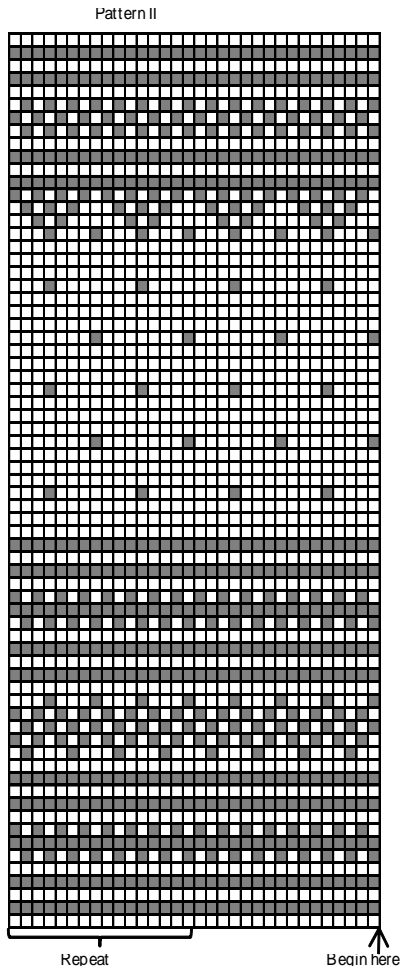
Join top seam of the hood. Beg from RS, using black yarn pick or knit up approx. 160 sts between purl-st (mid front) and first st in patt III. Work 6 rows in St st for seam allowance, Bind off. Sew seam allowance over cut edge. Dampen the edge around hood front.

Beg from back, using crochet hook size 3½ mm and grey yarn, and work 1 sc-rnd along the lower edge (square patt, and 73 side sts).

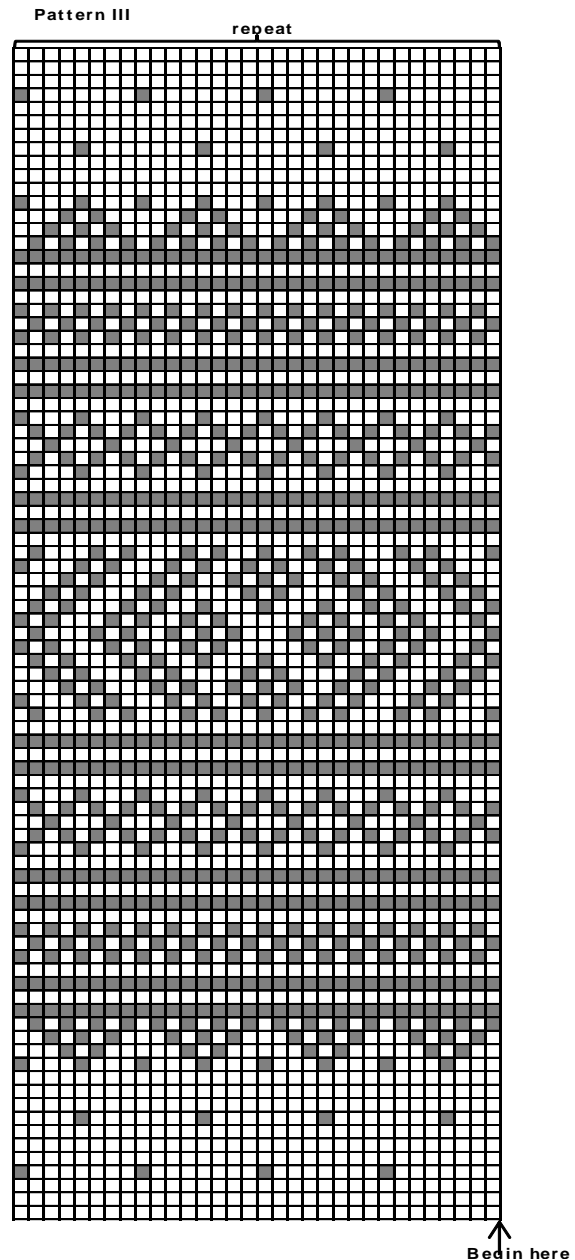
Pattern I



☐ = purl
☐ = knit



□ = Black
 ■ = Grey



Long socks

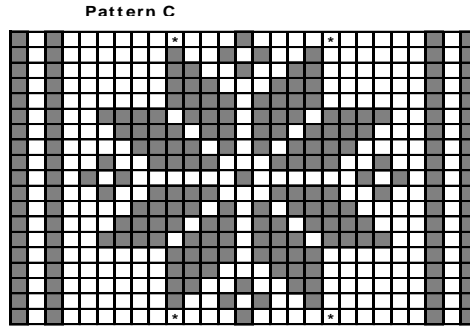
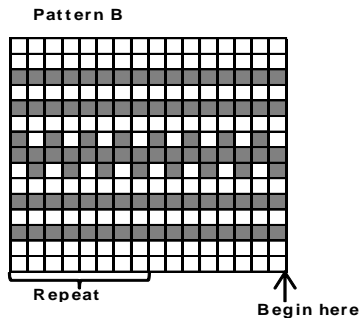
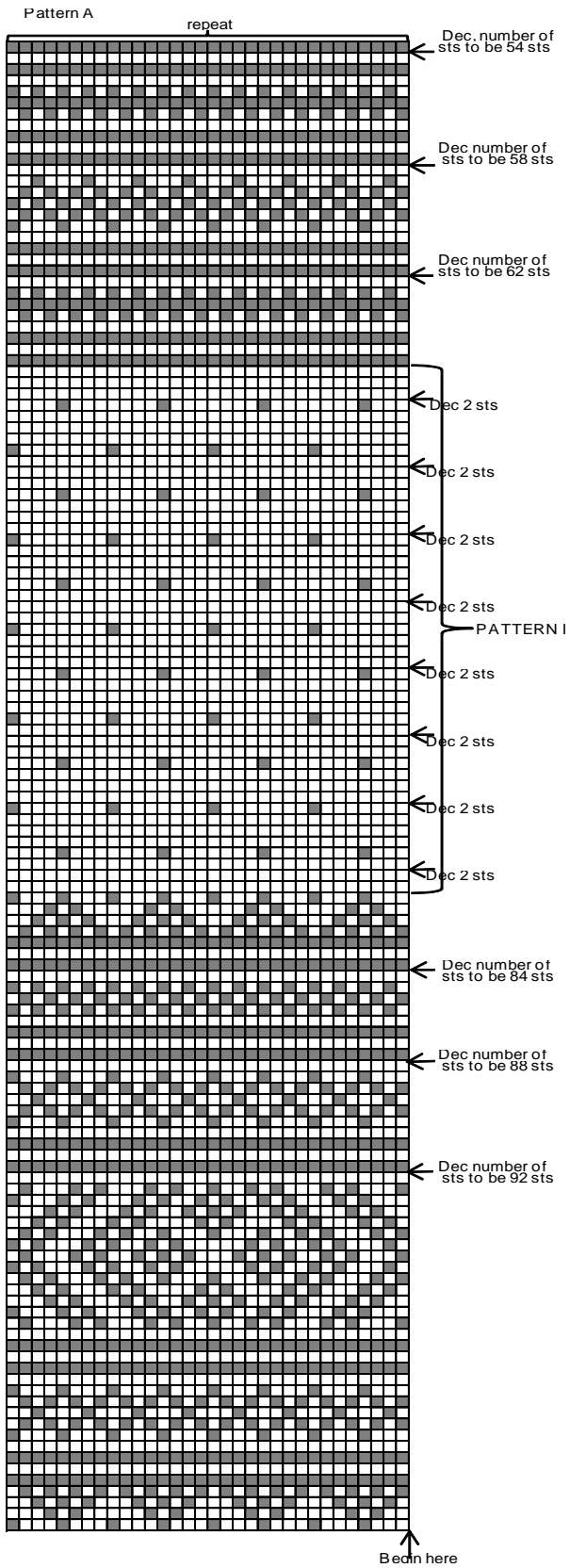
Using needles size 3 mm and black yarn, cast on 96 sts. Work 6 cm/2.4 in in rnds in K1,P1 rib. Change to needles size 3½ mm. Place a marker beg of rnd (= inner seam of the leg). Work in patt A, and dec as charted (= dec 4 sts evenly across the rnd). When working in patt I, dec 2 sts at the inner seam, 1 st both sides of the marker. Change to needles size 3 mm after patt A. Work 2 rnds in St st with black yarn, and then cont with black yarn approx 7 cm/2.8 in in K1,P1 rib. Change to needles size 3½ mm again, and work in patt B

Work for heel: Slip 27 sts on holder. Work back and forth in patt C over rem 27 sts. Using black yarn, purl 1 row over all sts. Knit 19 sts, turn, slip first st, and purl 11 sts, turn, slip first st, and work each time 1 st more until there is 2 sts at each side. Turn, knit all sts. You have now reached left side of the heel. Knit up and work in patt E 15 sts along left side of the heel, work patt D over 27 sts on holder, knit up and work in patt E 15 sts along right side of the heel. Cont working in rnds patt E over sole sts and both sides of the heel, and patt D over sts on top of the foot, dec same time 1 st both sides of patt D every rnd until 54 sts rem. Beg dec after patt D.

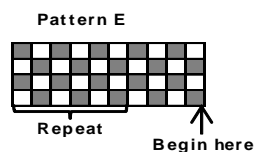
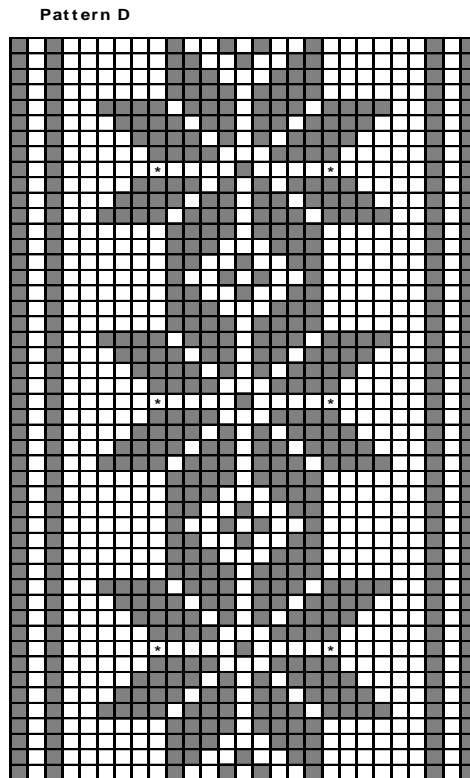
Place markers both sides of patt D. Knit 1 rnd with black yarn over all sts. Dec 1 st both sides of the markers every 2nd rnd 2

times, and after that every rnd until 12 sts rem. Break yarn, thread through rem sts, and pull tightly. Weave in all ends on WS.

Work same for the other sock, with dec for leg on the opposite side.



- = Black
- = White
- = Twist varns to avoid long strands of varn on WS



Hat, scarf and wristwarmers 1213-6

Size	Woman
Circumference:	50 cm
	19.7 in
Length, scarf:	72 cm
	28.3 in

ALTERNATIVE YARN: Viking Superwash (100 % wool, superwash), Viking Alpaca Sport (30% alpaca, 40%merino wool, 30 % nylon), Viking Sportsragg (60% wool, 20% nylon, 20% acrylic), Viking Sportsgarn (100% wool), 50 g ball

HAT

Burgundy, 161 1 ball
 Off-White, 102 1 ball
 Grey, 115 1 ball
 + 1 ball Fox4you clr 706 for pompon. Use rest yarn from scarf.

SCARF

Burgundy, 161 1 ball
 Off-White, 102 1 ball
 Grey, 115 1 ball
 Fox4you, 706 1 ball

WRISTWARMERS

Burgundy, 161 1 ball
 Off-White, 102 1 ball
 Grey, 115 1 ball

Circular needle and double pointed needles size 3½ mm – US 4 – UK/Canadian 10 or 9

+ needles size 8 mm – US 11 – UK/Canadian 0 for Fox4you.

Crochet hook size 3 mm and 8 mm – US C/2 or D/3 and L/11 – UK/Canadian 11 and 0

Gauge, Viking Superwash: 23 sts = approx. 10 cm/4 in over St st using needles size 3½ mm.

Gauge, Viking Fox4you: 12 sts = approx 10 cm/4 in over St st using needles size 8 mm.

Check your gauge to ensure success.

HAT

Beg from one earflap Using needles size 3½ mm and burgundy clr yarn, cast on 15 sts. Work back and forth in St st, and inc 1 st at each side every 2nd row until you have 21 sts on a row. Cont working without inc until work measures approx. 8 cm/3.1 in. Leave work aside, and knit same for the other earflap. Slip both earflaps on same needle, and cast on 21 sts between them = mid back. Cont working back and forth in St st until work measures approx. 2 cm/0.8 in, measured from mid back cast-on edge. Cast on 2 sts end of each row altog. 3 times = 75 sts. Cast on 37 sts = mid front = 112 sts on a rnd. Work 4 rnds in St st. Place a marker mid back, and beg patt from here. Work in patt for hat as charted. When patt is ready, cont working in St st with burgundy clr yarn, and beg crown dec: Beg mid back. *K12, K2tog*, rep *-* across the rnd. Work 1 rnd without dec. Rep dec every 2nd rnd with 1 st less between each dec until 16 sts rem. Break yarn, thread through rem sts, pull tightly, and weave in on WS.

Using crochet hook size 3 mm and burgundy clr yarn, crochet 1 sc-rnd across the lower edge.

Pompon (Fox4you)

Using needles size 8 mm, cast on 4 sts. Knit 1 row, and inc evenly across number of sts to be = 8 sts. Divide sts on 4 needles. Next rnd: Inc evenly across sts to be 16 sts. Knit 1 rnd. Next rnd: Inc 1 st to every 2nd st = 24 sts. Work 4 rnds in St st. Next rnd: Dec evenly across number of sts to be 16 sts. Knit 1 rnd. Next rnd: Dec evenly across number of sts to be 8 sts. Next rnd: Knit all sts tog in pairs = 4 sts. Break yarn, thread through rem sts, and weave in on WS. Turn pompon inside out. Thread cast-on yarn through 4 cast-on sts, and pull tightly. Fasten pompon on top of the hat. Rest of the fur yarn will be used for

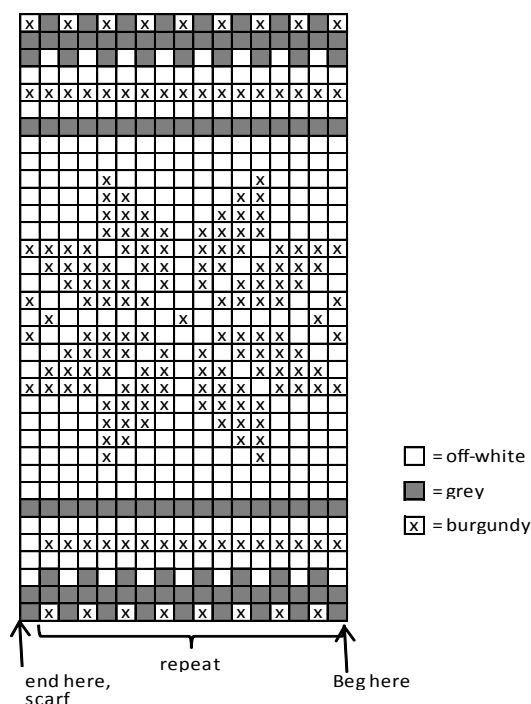
the shorter edges of the scarf. Cut rem yarn into 2 equal lengths. Pick up approx. 20 sts from each short edge on needles size 8 mm, and knit approx. 6 rows.

SCARF

Worked lengthways and joined into a ring. Using needles size 3½ mm and burgundy clr yarn, cast on 49 sts. *Work in patt for scarf as charted. Change to needles size 8 mm, and Fox4you. Knit 1 row, and knit all sts tog in pairs, end with K1. Work 5 more rows in Garter st. Change to burgundy superwash, knit 1 row from RS and inc 1 st to each st, knit last st without inc* = 49 sts. Rep *-* 2 more times. End with 1 extra row with burgundy superwash. Bind off. Join scarf into a ring.

Using crochet hook size 6 mm and Fox4you, work 1 sc-row along both edges. Note! Work from WS, as fur tends to turn on the other side (= RS).

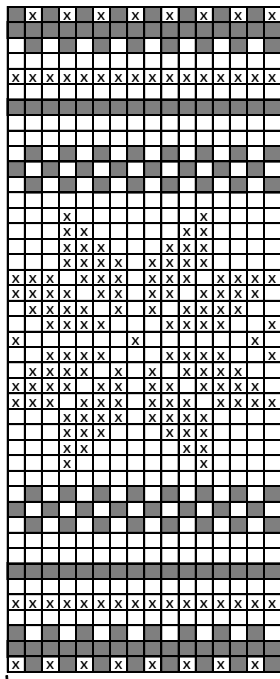
PATTERN FOR HAT AND SCARF



WRISTWARMERS

Using needles size 3 mm and burgundy clr yarn, cast on 192 sts. Work 4 rnds in K6,P6 rib. Next rnd: Knit/purl 2 first and last sts tog for each knit and purl stripe (= 128 sts). Work 4 rnds in K4,P4 rib. Next rnd: Purl all purl-sts tog in pairs, and knit all knit-sts tog in pairs = 64 sts. Work 4 rnds in K2,P2 rib. Change to needles size 3½. Knit 1 rnd, and dec evenly across number of sts to be 48 sts. Cont working in patt as charted for wristwarmers. When patt is ready, cont working in K2,P2 rib with burgundy clr yarn until rib measures 4 cm/1.8 in. Bind off in rib. Work same for the other wristwarmer. Weave in all ends on WS.

PATTERN FOR WRISTWARMERS

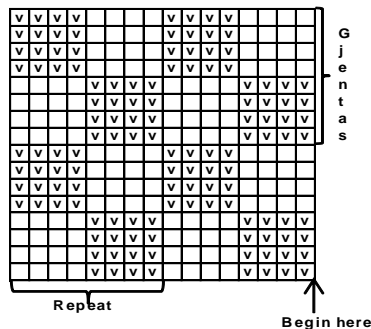


□ = off-white
 ■ = grey
 x = burgundy

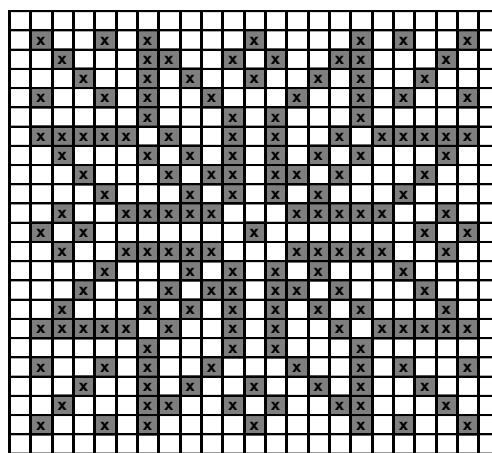
repeat

work 12 cm/4.7 in in K2,P2 rib. Bind off in rib. Weave in all ends on WS. Sew on buttons.

Pattern II



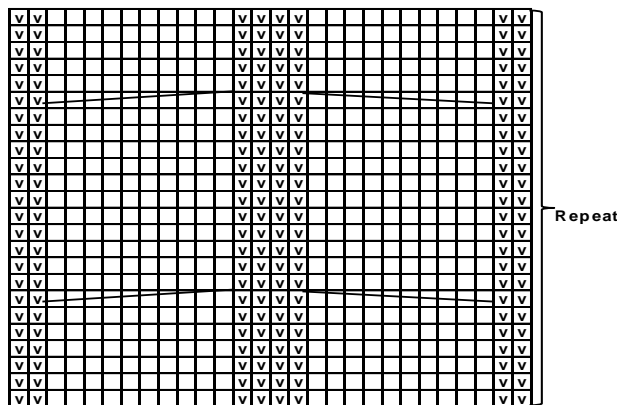
Pattern III



PATTERN TO BE EMBROIDERED WITH CROSS STS

x = White

Pattern I



□ Knit (knit on RS, purl on WS)

v Purl (purl on RS, knit on WS)

□□□□□□□□ = slip 5 sts on cn, hold to front, K5, knit sts from cn

□□□□□□□□ = slip 5 sts on cn, hold to back, K5, knit sts from cn

Viking Superwash

Shawl

1213-7

Size 45 x 160cm
17.7 x 63 in

ALTERNATIVE YARN: Viking Superwash (100% wool, superwash), Viking Alpaca Sport (30% alpaca, 40% merino wool, 30% nylon), Viking Sportsragg (60% wool, 20% nylon, 20% acrylic), Viking Sportsgarn (100% wool), 50 g ball

SHAWL

Beige, 107 balls 11
 White, 100 1 ball

Circular needle and double pointed needles size 3 and 3½ mm – US 2 or 3 and 4 – UK/Canadian 11 and 10 or 9 + 2 buttons

Gauge: 23 sts = approx. 10 cm/4 in over St st using needles size 3½ mm. **Check your gauge to ensure success.**

Using needles size 3 mm, cast on 102 sts. Work back and forth in K2,P2 rib. When rib measures 3 cm/1.2 in, make a buttonhole 5 sts inside end of the row. Buttonhole: Bind off 3 sts. Next row: Cast on 3 sts over the bound-off sts. Make another, corresponding buttonhole after 9cm/3.5 in. When rib measures approx. 12 cm/4.7 in, change to needles size 3½ mm. Next row, inc as foll: inc 14 sts evenly across first 18 sts = patt I, work patt II over 84 sts = 116 sts. Cont working back and forth as established. When work measures approx. 74 cm/29.1 in (end with a complete square), work St st over patt II 28 mid sts, 12 sts from the edge (patt III will be embroidered here later on). Cont working as foll: Patt II over 4 sts, patt I over 32 sts, patt II over 40 sts, St st over 28 sts, and patt II over 12 sts. Cont working as established for 7 squares in height. Cont working in patt II over 80 sts, same as before until work measures approx. 148 cm/58.3 in. End with a complete square, and dec on last row 14 sts evenly across patt I (18 sts rem). Change to needles size 3 mm, and

Viking Superwash

Hat

1213-8

Size	woman	man
Circumference	52	56 cm
	20.5	22 in
Length	21	23 cm
	8.3	9.1 in

ALTERNATIVE YARN: Viking Superwash (100% wool, superwash), Viking Alpaca Sport (30% alpaca, 40% merino wool, 30% nylon), Viking Sportsragg (60% wool, 20% nylon, 20% acrylic), Viking Sportsgarn (100% wool), 50 g ball

HAT

White, 100	2	2 balls
Dark Grey, 117	1	1 ball
1 ball Fox4you clr 102 for pompon		

MITTENS

Dark Grey, 117	2	2 balls
White, 100	1	1 ball

SCARF

Wine, 162	7 balls
-----------	---------

Circular needle and double pointed needles size 3 and 3½ mm – US 2 or 3 and 4 – UK/Canadian 11 and 10 or 9

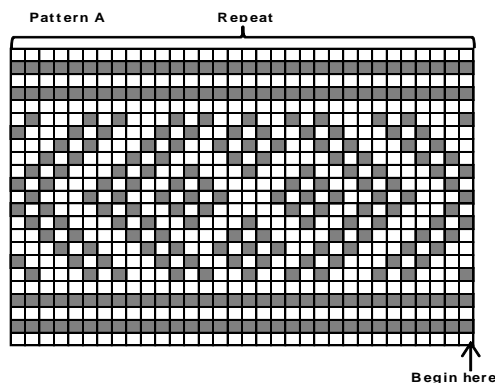
Gauge: 23 sts = approx. 10 cm/4 in over St st using needles size 3½ mm. **Check your gauge to ensure success.**

HAT

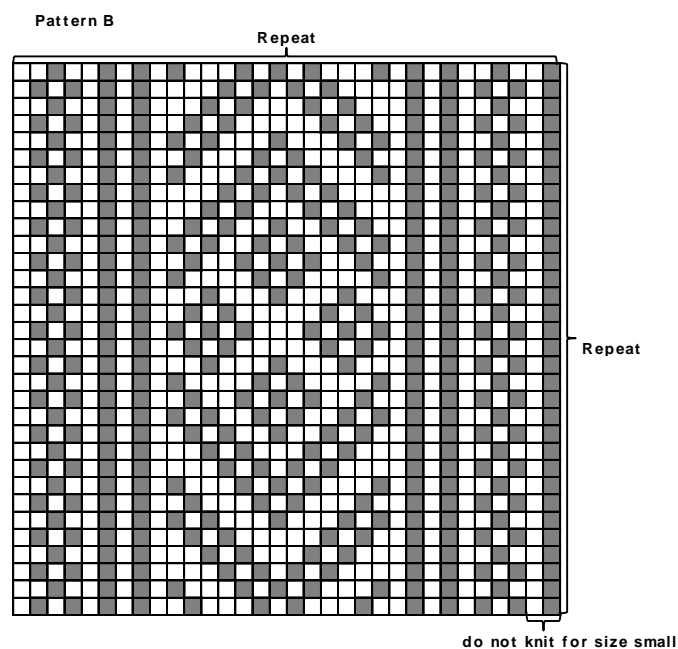
Using needles size 3 mm and dark grey yarn, cast on 120 – 120 sts. Work 3 rnds in K1,P1 rib. Change to needles size 3½ mm. Knit 1 rnd, and inc evenly across number of sts to be 128 – 128 sts. Work in patt A, and after that 2 rnds in St st with dark grey yarn, and dec evenly across 2nd rnd number of sts to be 120 (120) sts. Change to needles size 3 mm. Work 8 cm/3.1 in in K1,P1 rib. Turn work inside out. Change again to needles size 3½ mm. Knit 1 rnd, and inc evenly across number of sts to be 120 (128) sts. Work and rep patt B until work measures (measured from turning the work inside out) approx. 20 (22) cm/7.9 (8.7) in. Cont working in St st with dark grey yarn, and beg crown dec: *K2, K2tog*, rep across the rnd. Work 2 rnds without dec. Next rnd: *K1, K2tog*, rep *-.* across the rnd. Work 2 rnds without dec. Next rnd: Knit all sts tog in pairs. Work 2 rnds without dec =15 (16) sts, Break yarn, and thread through rem sts. Weave in all ends on WS.

Pompon (Fox4you)

Using needles size 8 mm, and cast on 4 sts. Knit 1 row, and inc evenly across number of sts to be 8 sts. Divide sts on 4 dpn. Next rnd: Inc evenly across number of sts to be 16 sts. Knit 1 rnd. Next rnd: Inc evenly across number of sts to be 24 sts. Work 4 rnds in St st. Next rnd: Dec evenly across number of sts to be 16 sts. Work 1 rnd. Next rnd: Dec evenly across number of sts to be 8 sts. Last rnd: Knit all sts tog in pairs = 4 sts. Break yarn, thread through rem sts, and weave in on WS. Turn work inside out. Thread cast-on yarn through cast-on sts, pull tightly. Fasten pompon on top of the hat.



□ = White
■ = Dark grey

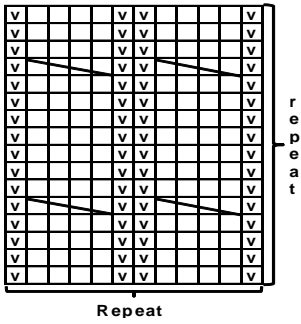


SCARF

Size	25 x 180 cm
	9.8 x 70.9 in

Using needles size 3½ mm, cast on 66 sts. Work K1,P1 rib over 11 sts, patt I over 12 sts, rib over 21 sts, patt I, and rib over 10 sts. Work sts as established until work measures approx. 180 cm/70.9 in (end as charted). Bind off knit-sts knitwise and purl-sts purlwise.

Pattern 1



□ = knit

◻ = purl

◻◻◻◻ = Sl 2 sts on cn, hold to front, K2, knit sts from cn

MITTENS

Size

Dark Grey, 117

White, 100

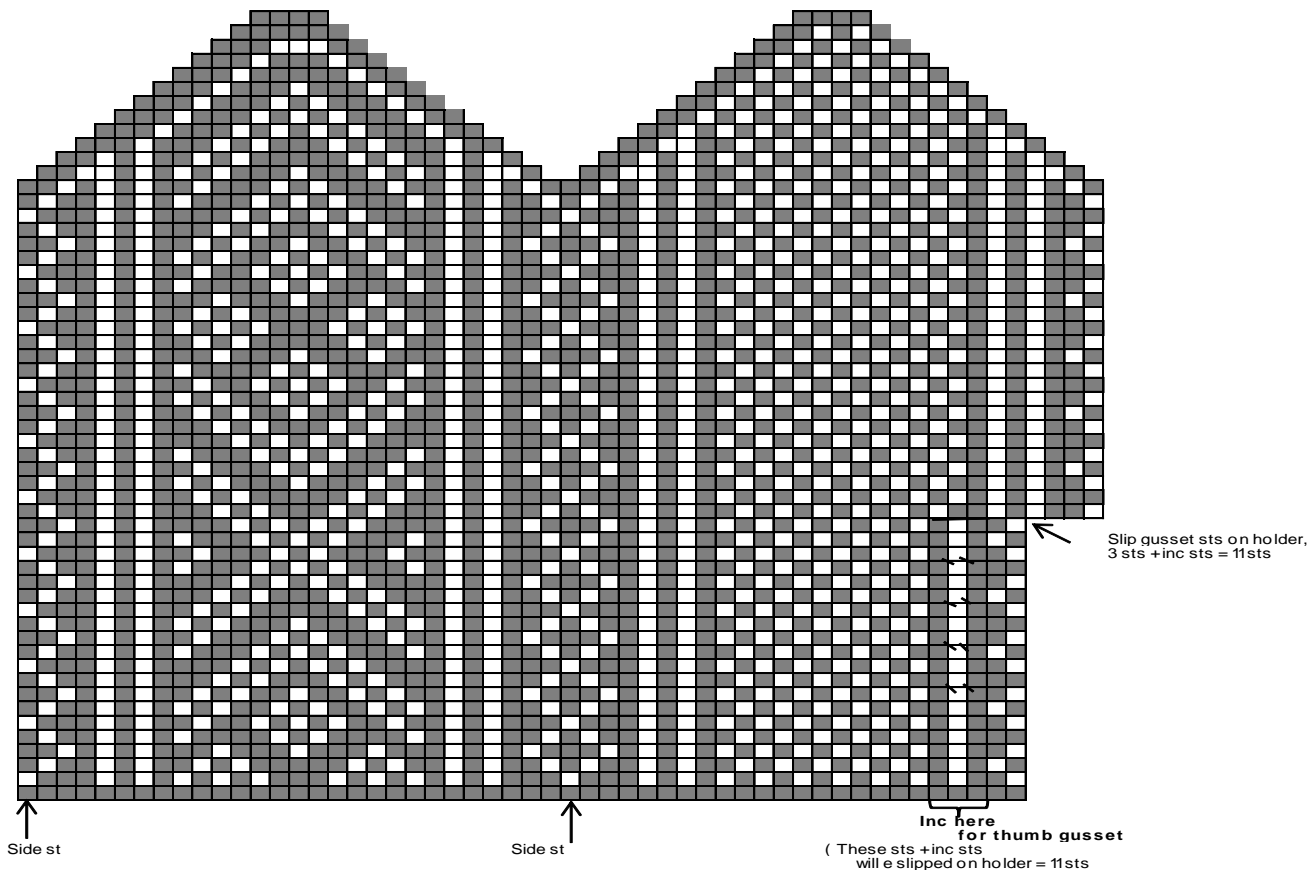
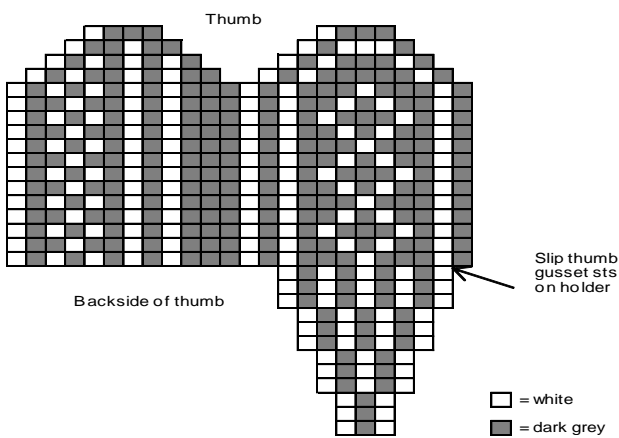
Woman

2 balls

1 ball

Using needles size 3 mm and dark grey yarn, cast on 48 sts. Work 7 cm/2.8 in in K1,P1 rib. Change to needles size 3½ mm. Work in patt for mittens, and inc evenly across 1st rnd number of sts to be 52 sts. Inc for thumb gusset as charted. Slip gusset sts on holder where arrow points out. Cast on 7 sts over gusset sts = 56 sts. Cont working as charted.

Thumb: Slip thumb gusset sts on a needle. Pick up 9 sts from upper edge of thumb opening + 2 sts from each side = 24 sts. Work in patt for thumb.



Viking Superwash

Socks

1213-9

Size: Woman

ALTERNATIVE YARN: Viking Superwash (100% wool, superwash), Viking Alpaca Sport (30% alpaca, 40% wool, 30% nylon), Viking Sportsragg (60% wool, 20% nylon, 20% acrylic), Viking Sportsgarn (100% wool), 50 g ball

Dark Grey, 117 4
balls
White, 100 4
balls

Circular needle and double pointed needles size 3 and 3½ – US 2 or 3 and 4 – UK/Canadian 11 and 10 or 9

Gauge: 23 sts = approx 10 cm/4 in over St st using needles size 3 mm. **Check your gauge to ensure success.**

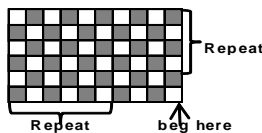
Using needles size 3 mm and white yarn, cast on 80 sts. Work and rep patt I until work measures approx. 8 cm/3.1 in (end with a complete square). Change to needles size 3½ mm. Work in patt II as charted, and inc evenly across 1st rnd number of sts to be 88 sts. When work measures approx. 30 cm/11.8 in, beg dec for leg: Dec as charted every 4th rnd until 58 sts rem. Cont working until sock measures 55 cm/21.7 in.

Work for heel: Slip mid back 29 sts over an extra needle. Work back and forth patt III. Purl 1 row (= WS) with dark grey yarn. Knit 20 sts, turn, sl 1 st, purl 11 sts, turn, sl 1 st, and work 1 st more each time until 2 sts rem at each side, turn, and knit 1 row. You have now reached left edge of the heel. Knit up approx. 16 sts in patt IV along left edge of the heel, work patt II over next 29 sts, and

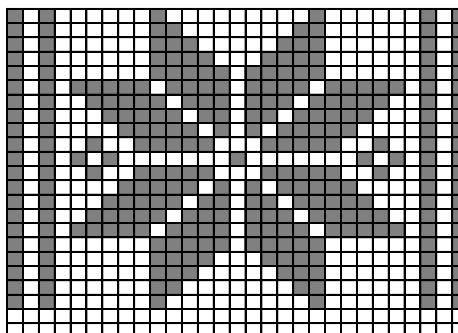
knit up approx. 16 sts in patt IV along right edge of the heel. Cont working in rnds in patt IV for sole and both sides of the heel, and cont working in patt II on top of the foot, **and** dec 1 st both sides of patt II **every** rnd until 57 sts rem. There should be now an even number of sts for sole so that patt is same on each side of patt II. When foot measures approx. 22 cm/8.7 in (or desired length before dec), work 1 rnd with dark grey yarn.

Beg dec: Place markers at each side. Work in patt IV, and dec 1 st both sides of the markers every 2nd rnd 2 times, and after that each rnd until 11 sts rem. Break yarn, thread through rem sts, pull tightly, and weave in on WS.

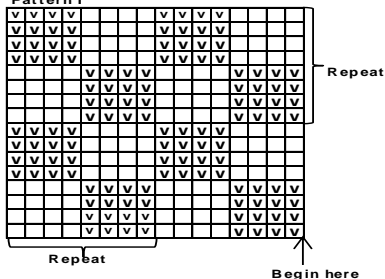
Pattern IV



Pattern III



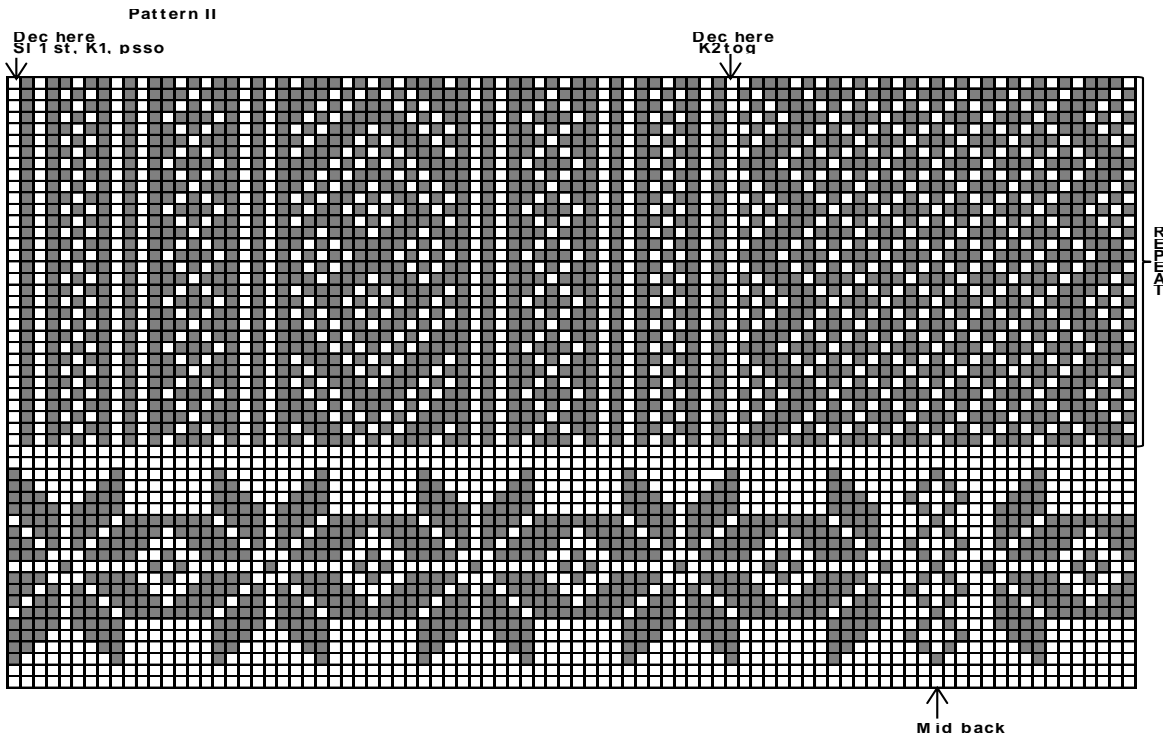
Pattern I



☐ = white, purl

■ = dark grey, knit

☐ = white, nit



**GL
OV
ES**
Using
needles
size 3
mm and
white
yarn,
cast on
48
sts. Work
patt I.
Change
to

Viking Superwash

Gloves and hat

1213-10

Size Woman

ALTERNATIVE YARN: Viking Superwash (100% wool, superwash), Viking Alpaca Sport (30% alpaca, 40% merino wool, 30% nylon), Viking Sportsragg (60% wool, 20% nylon, 20% acrylic), Viking Sportsgarn (100% wool), 50 g ball

GLOVES

White, 100 (Black, 103) 2 balls
Light Grey, 113 1 ball

HAT

White, 100 2 balls
Light Grey, 113 1 ball
Fox4you clr 512 for pompon 1 ball

needles size 3½ mm. Work in patt as charted, and inc evenly across 1st rnd number of sts to be 52 sts. Inc for thumb gusset as charted. Slip 9 gusset sts on holder as charted. Cast on 7 sts over gusset sts = 56 sts. Cont working as charted.

Index finger: Slip sts on 4 needles, and cast on 5 sts between index and middle finger = 20 sts. Work as charted.

Middle finger: Slip sts on 4 needles. Pick up 3 sts from index finger, and cast on 3 sts between middle and ring finger. Work as charted.

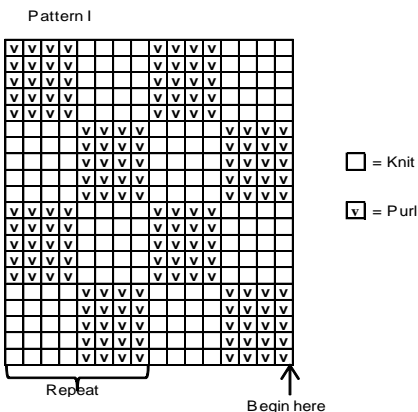
Ring finger: Slip sts on 4 needles. Pick up 4 sts from middle finger, and cast on 4 sts between ring and little finger. Work as charted.

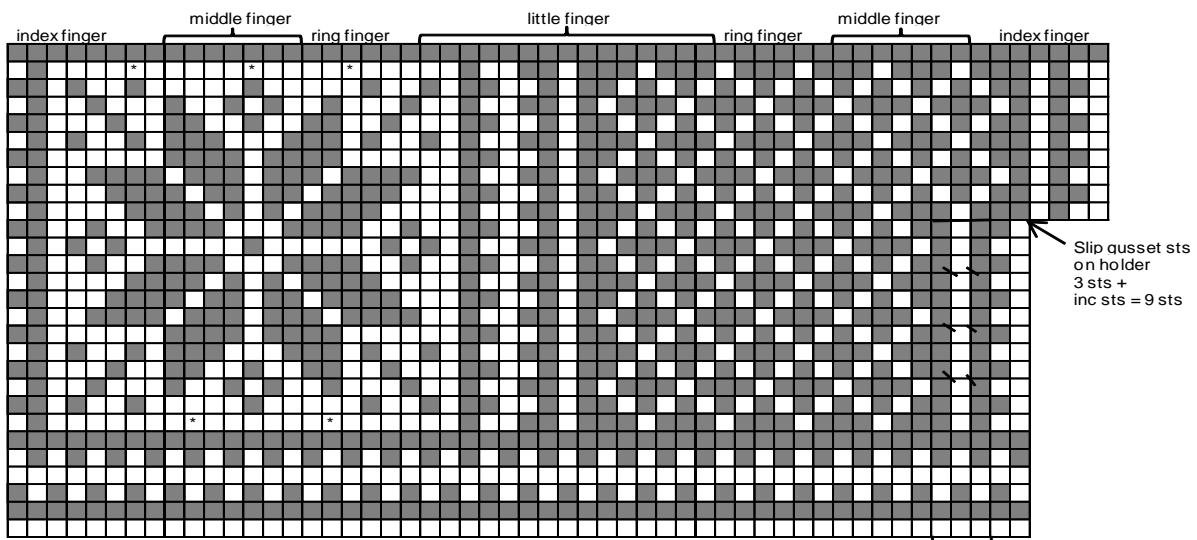
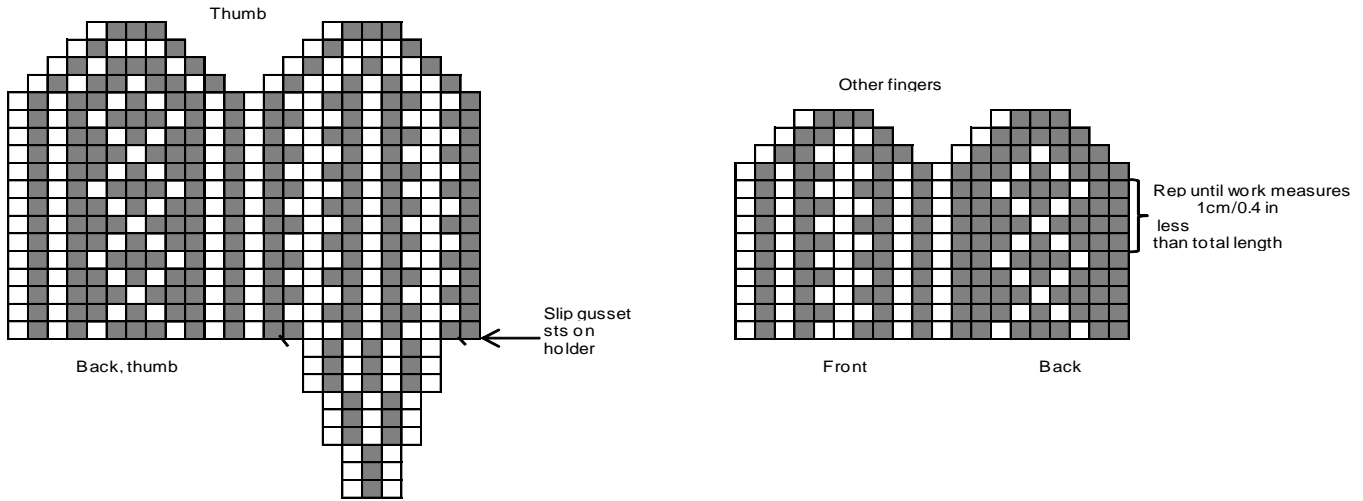
Little finger: Slip sts on 4 needles. Pick up 5 sts from ring finger. Work as charted.

Thumb: Slip gusset sts on a needle, pick up 9 sts from upper edge of thumb opening + 2 sts from both sides. Work patt as charted for thumb (Note! Don't forget last inc in thumb chart =24 sts).

Double pointed needles size 3 and 3½ mm – US 2 or 3 and 4 – UK/Canadian 11 and 10 or 9

Gauge: 23 sts = approx. 10 cm/4 in over St st using needles size 3½ mm. **Check your gauge to ensure success.**





(These sts +and inc sts are slipped over holder = 9 sts).

□ = White

■ = Dark Grey

⌞ = M1 Pick up white strand between sts, and Ktbl with white yarn.

⊛ = Twist yarn here

Hat

Size	woman
Circumference	55 cm
	in
Length	21 cm
	in

Using needles size 3 mm and white yarn, cast on 120 sts. Work 3 rnds in K1,P1 rib. Change to needles size 3½mm. Work in patt A, and inc evenly across 1st rnd number of sts to be 128 sts. Work 2 rnds in St st with white yarn, and evenly across 2nd rnd number to be 120 sts. Change to needles size 3 mm Work 8 cm/3.1 in in K1,P1. Turn work inside out. Change to needles size 3½ mm. Knit 1 rnd, and inc evenly across number of sts to be 128 sts. Work and rep patt B, until work measures (measured from folding) approx. 20 cm/7.9 in. Beg crown dec after patt B : *K/P2, K/P2tog (knit or purl according to square patt). Work 3 rnds. Beg of next square K/P1, K/P2tog. Work 3 rnds. Cont working in St st. *Knit all sts tog in pairs. Work 2 rnds*. Rep *-* until 16 sts rem. Break yarn, and thread through rem sts. Weave in all ends on WS.

Pompon (Fox4you)

Using needles size 8 mm, cast on 4 sts. Knit 1 row, and inc 1 st to each st = 8 sts. Divide sts on 4 needles. Next rnd: Inc 1 st to each st = 16 sts. Knit 1 rnd. Next rnd: Inc 1 st to every 2nd st = 24 sts. Work 4 rnds in St st. Next rnd: Dec evenly across number of sts to be 16 sts. Knit 1 rnd. Next rnd: Dec evenly across number of sts to be 8 sts. Last rnd: Knit all sts tog in pairs = 4 sts. Break yarn, and thread through rem sts. Weave in end on WS. Turn work inside out. Thread cast-on yarn through cast-on sts, and pull tightly. Fasten pompon on top of the hat.

Viking Superwash

Socks

1213-11

Size	37/39	40/42	44/46
Foot length, approx.	20	22	24 cm
	7.9	8.7	9.4 in

ALTERNATIVE YARN: Viking Superwash (100% wool, superwash), Viking Alpaca Sport (30% alpaca, 40% merino wool, 30% nylon), Viking Sportsragg (60% wool, 20% nylon, 20% acrylic), Viking Sportsgarn (100% wool), 50 g ball

Off-White, 102	2	2	2 balls
Light Grey, 113	1	1	1 ball

Circular needle and double pointed needles size 3 and 3½ mm – US 2 or 3 and 4 – UK/Canadian 11 and 10 or 9

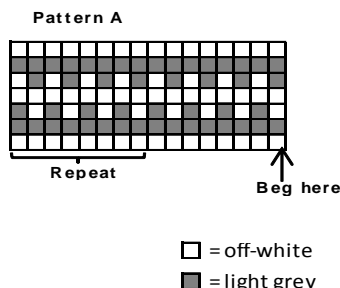
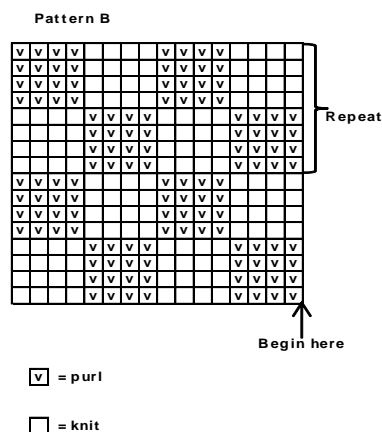
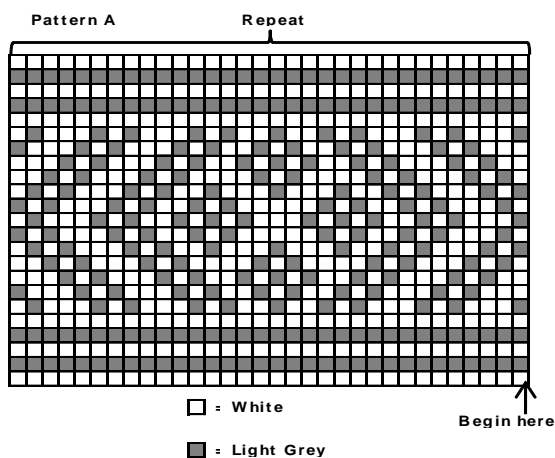
Gauge: 23 sts = approx. 10 cm/4 in over St st using needles size 3½ mm. **Check your gauge to ensure success.**

When working a patt with 2 clr, it's important to maintain the order of yarns over your finger. Always hold the darker clr in front throughout the whole project.

SOCKS

Using needles size 3 mm and white yarn, cast on 48 – 52 – 56 sts. Work 10 – 11 – 12 cm/4-4.3-4.7 in in K1,P1 rib. Change to needles size 3½ mm, and work in patt A as charted. Slip 23 – 25 – 27 sts on holder. Work back and forth in patt B over rem 25 – 27 – 29 sts. Purl 1 row over all sts. Knit 17 – 19 – 20 sts, turn, sl 1 st, purl 9 – 11 – 11 sts, turn, sl 1 st, and work 1 st more each time until 2 sts rem at each side. Turn, and knit 1 row. You have now reached left edge of the heel. Knit up 13 – 15 – 16 sts in patt D along left edge of the heel, work in patt C over 23 – 25 – 27 sts on holder, and knit up 13 – 15 – 16 sts in patt D along right edge of the heel. Cont working in rnds in patt D over sole sts and each side of the heel, and in patt C on top of the foot, **and** dec 1 st every rnd both sides of patt C until 48 – 52 – 56 sts rem. When foot measures approx. 20 – 22 – 24 cm/7.9-8.7-9.4 in (or desire length before dec), end with a complete or half patt C, or work in patt A before starting dec.

Beg dec: Place markers rnd sts both sides of patt C. Cont working in patt D. Dec 1 st both sides of markers every 2nd rnd 2 times, and then every rnd until 12 sts rem. Break yarn, thread through rem sts, pull tightly, and weave in on WS.



Viking Superwash

Mittens

1213-12

Size Woman

ALTERNATIVE YARN: Viking Superwash (100% wool, superwash), Viking Alpaca Sport (30% alpaca, 40% merino wool, 30% nylon), Viking Sportsragg (60% wool, 20% nylon, 20% acrylic), Viking Sportsgarn (100% wool), 50 g ball

Off-White, 102 2 balls
 Black, 103 1 ball

Double pointed needles size 3 and 3½ mm – US 2 or 3 and 4 – UK/Canadian 11 and 10 or 9

Gauge: 23 sts = approx 10 cm/4 in over St st using needles size 3½ mm. **Check your gauge to ensure success.**

MITTENS

Using needles size 3 mm and white yarn, cast on 48 sts. Work in K1,P1 rib with stripes: 4 rnds with white, 3 rnds with black, 4 rnds with white, 2 rnds with black, 4 rnds with white, 3 rnds with black and 4 rnds with white. Change to needles size 3 ½ mm. Work in patt as charted, and inc evenly across 1st rnd number of sts to be 52 sts. Inc for thumb gusset as charted. Slip gusset sts on holder as charted. Cast on 7 sts over thumb gusset sts = 56 sts. Cont working as charted.

Thumb: Slip gusset sts on a needle. Pick up 9 sts from upper edge of thumb opening + 2 sts each side. Work in patt for thumb (Note! Don't forget last inc in chart for thumb = 24 sts).

Chart for heel over 29, 27, and 25 sts

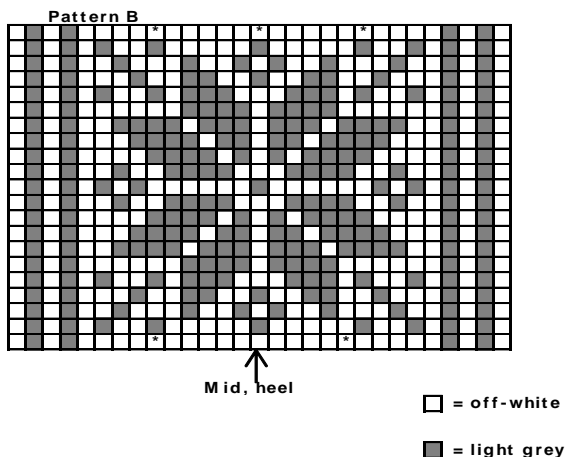
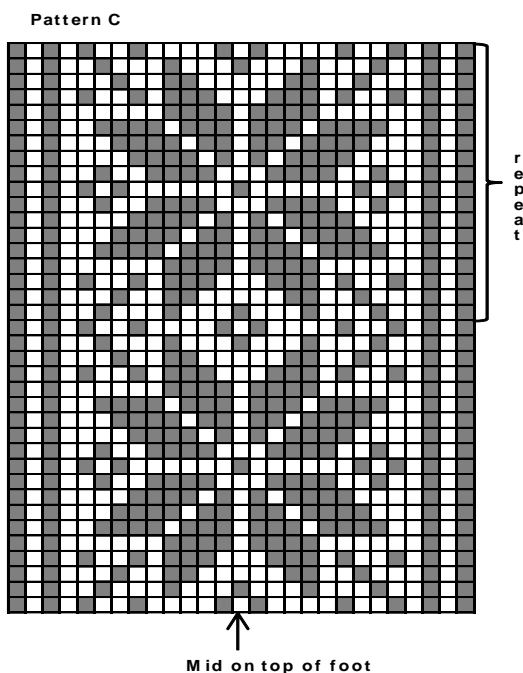
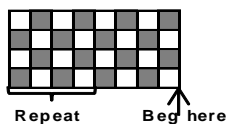


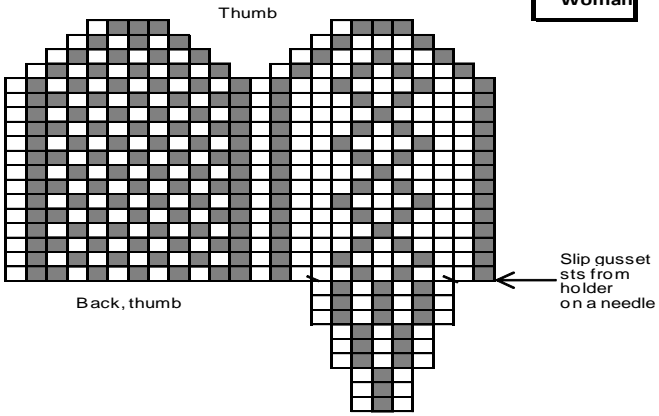
Chart for 27, 25 and 23 sts



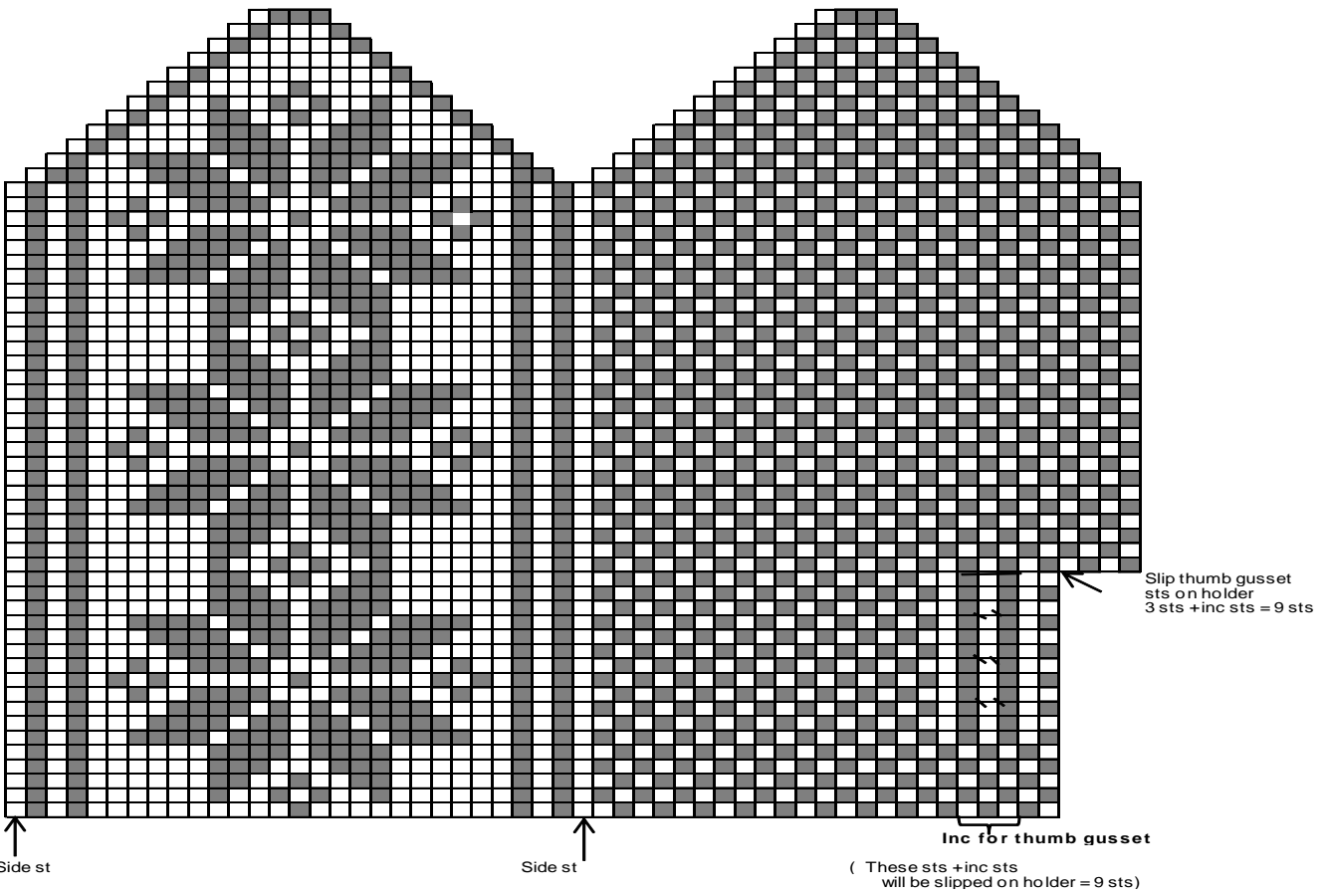
Pattern D



Woman



- = off-white
- = black
- ◻ = M 1 (= pick up white strand between sts, Ktbl with white yarn)



Viking Superwash

Poncho

1213-13

Size	Woman
Width	139 cm
Length, approx.	50 cm
	19.7 in

ALTERNATIVE YARN: Viking Superwash (100% wool, superwash), Viking Alpaca Sport (30% alpaca, 40% merino wool, 30% nylon), Viking Sportsragg (60% wool, 20% nylon, 20% acrylic), Viking Sportsgarn (100% wool), 50 g ball

White, 100	10 balls
Light Grey, 113	2 balls

Circular needle and double pointed needles size 3 and 3½ mm – US 2 or 3 and 4 – UK/Canadian 11 and 10 or 9

Gauge: 23 sts = approx. 10 cm/4 in over St st using needles size 3½ mm. **Check your gauge to ensure success.**

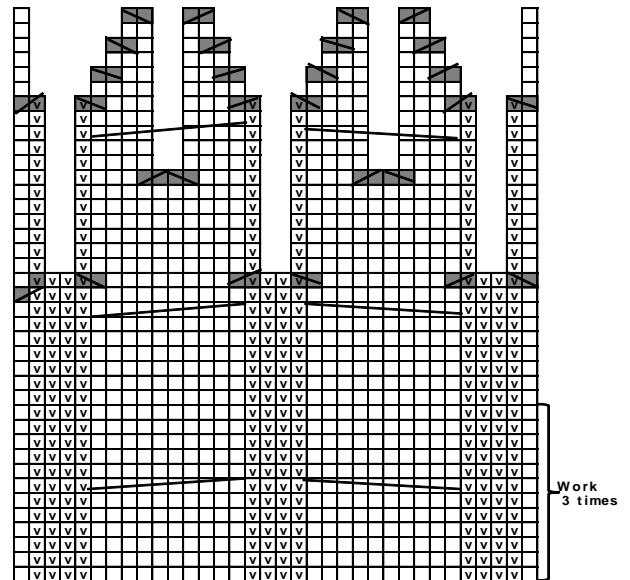
When working a patt with 2 clrs, it's important to maintain the order of yarns over your finger. Always hold the darker clr in front throughout the whole project.

Using needles size 3 mm and white yarn, cast on 384 sts. Work in rnds 6 cm/2.4 in in K1,P1 rib. Change to needles size 3½ mm. Work in patt A.

When patt A is ready, cont working in patt B, and inc as foll: Divide work into 16 panels, with 24 sts for each panel. Beg from mid back. Knit 1 rnd, and inc 14 sts evenly across 18 mid sts of each panel = 608 sts on a rnd. Work *patt B over 34 sts, St st over 4 sts*, rep *-* and end with St st over 4 sts. After 3 cable twists beg dec: K2 last sts of each St st stripe tog. Rep dec every 5th rnd until 2 St sts rem for each stripe. Cont dec as charted = 96 sts rem. Knit 1 rnd with white yarn. Cont working with needles size 3½ mm, and work patt C. Change to needles size 3 mm. Cont working with white yarn, and purl 1 rnd (= folding edge), and then 4 cm/1.6 in in St st. Bind off loosely. Fold neck edge in double, and sew on WS.

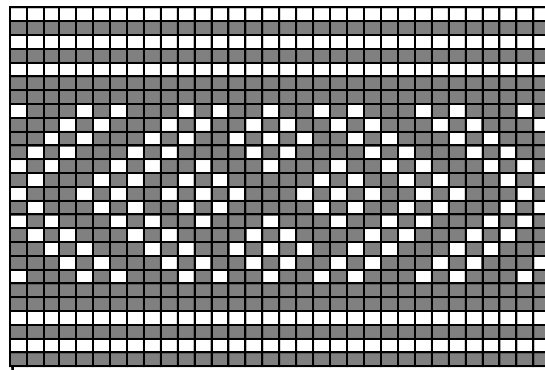
Fold rib, and sew on WS. Dampen patt A slightly.

Pattern B



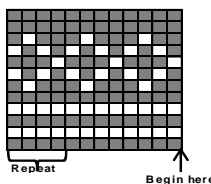
- = Knit
- = Purl
- = slip 5 sts on cn, hold to front, K5, knit sts from cn
- = slip 5 sts on cn, hold to back, K5, knit sts from cn
- = Sl 1 st, K1, pssso
- = K2tog

Pattern A



- = light grey
- = white

Pattern C



Viking Superwash

Necklet and hat

1213-14

Size, necklet 30 x 180 cm
11.8 x 70.9 in

ALTERNATIVE YARN: Viking Superwash (100% wool, superwash), Viking Alpaca Sport (30% alpaca, 40% merino wool, 30% nylon), Viking Sportsragg (60% wool, 20% nylon, 20% acrylic), Viking Sportsgarn (100% wool), 50 g ball

NECKLET

Navy Blue, 126 3 balls
 Red, 160 3 balls
 White, 100 3 balls

HAT

Navy Blue, 126 3 balls

Circular needle and double pointed needles size 3 and 3 ½ mm – US 2 or 3 and 4 – UK/Canadian 11 and 10 or 9

Gauge: 23 sts = approx. 10 cm/4 in over St st using needles size 3 ½ mm. **Check your gauge to ensure success.**

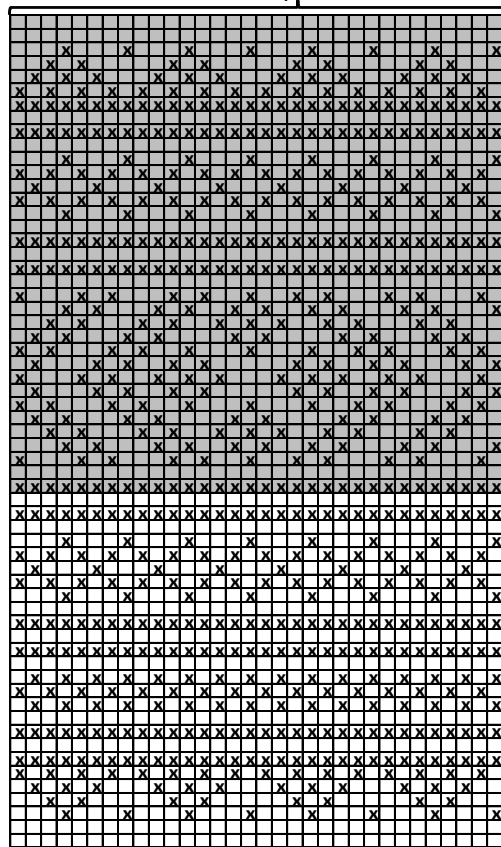
When working in a patt with 2 clrs, it's important to maintain order of yarns over your finger. Always hold the darker clr in front throughout the whole project.

NECKLET

Using needles size 3 mm and navy blue yarn, cast on 416 sts. Work 4 cm/1.6 in in K1,P1 rib. Change to needles size 3 ½ mm, and work patt A. Change to needles size 3 mm, and work 4 cm/1.6 in in K1,P1 rib with red yarn. Bind off in rib.

Pattern A

Repeat



- : Red
- : White
- : White
- : Navy Blue

HAT

Size Adult

Using needles size 3 mm, cast on 120 sts. Work in rnds 7 cm/2.8 in in K3,P1 rib. Change to needles size 3 ½ mm. Knit 1 rnd, and inc 1 st to each knit-stripe. Cont working in K4,P1 rib until work measures approx. 26 cm/10.2 in. Beg dec: *K3, K2tog*, rep *-* across the rnd. Work 3 rnds in St st. Rep dec with 1 st less between each dec every 3rd rnd 2 times, and then every 2nd rnd until 15 sts rem. Break yarn, thread through rem sts, and weave in on WS.

Viking Superwash

Hat

1213-15

Size Adult

ALTERNATIVE YARN: Viking Superwash(100% wool, superwash), Viking Alpaca Sport (30% alpaca, 40% merino wool, 30% nylon), Viking Sportsragg (60% wool, 20% nylon, 20% acrylic), Viking Sportsgarn (100% wool), 50 g ball

Navy Blue, 126 1 ball
 Red, 160 1 ball
 White, 100 1 ball

Circular needle and double pointed needles size 3 and 3 ½ mm – US 2 or 3 and 4 – UK/Canadian 11 and 10 or 9

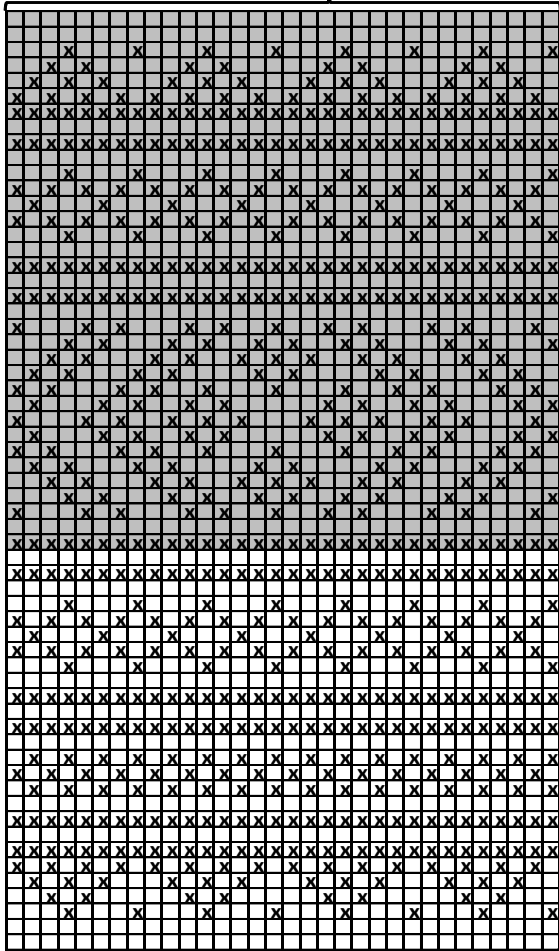
Gauge: 23 sts = approx 10 cm/4 in over St st using needles size 3 ½ mm. **Check your gauge to ensure success.**

When working in a patt with 2 clrs, it's important to maintain the order of yarns over your finger. Always hold the darker clr in front throughout the whole project.

Using needles size 3 mm and navy blue yarn, cast on 120 sts. Work 6 cm/2.4 in in K1,P1 rib. Change to needles size 3 ½ mm. Work in patt A, **and** inc evenly across 1st rnd number of sts to be 128 sts. When patt is ready, cont working with red yarn, and beg crown dec: *Knit all sts tog in pairs. Work 2 rnds in Garter st*, rep *-* 4 times = 8 sts rem. Break yarn, thread through rem sts, pull tightly, and weave in on WS.

Pattern A

Repeat



Begin here

- = Red
- ⊗ = White
- ⊗ = White
- = Navy Blue

Viking Superwash 1213-16

Hat, scarf, kneelength socks and mittens

Size	Woman	Man
Length, approx.	45	50 cm
	17.7	19.7 in

ALTERNATIVE YARN: Viking Superwash (100% wool, superwash), Viking Alpaca Sport (30% alpaca, 40% merino wool, 30% nylon), Viking Sportsragg (60% wool, 20% nylon, 20% acrylic), Viking Sportsgarn (100% wool), 50 g ball

- HAT**
 Grey, 113 3 balls
- SCARF**
 Grey, 113 7 balls
- KNEELENGTH SOCKS**
 Grey, 115 6 7 balls
- MITTENS**
 Grey, 113 2 balls

Circular needle and double pointed needles size 3 and 3½ mm – US 2 or 3 and 4 – UK/Canadian 11 and 10 or 9

Gauge: 23 sts = approx. 10 cm/4 in over St st using needles size 3½ mm. **Check your gauge to ensure success.**

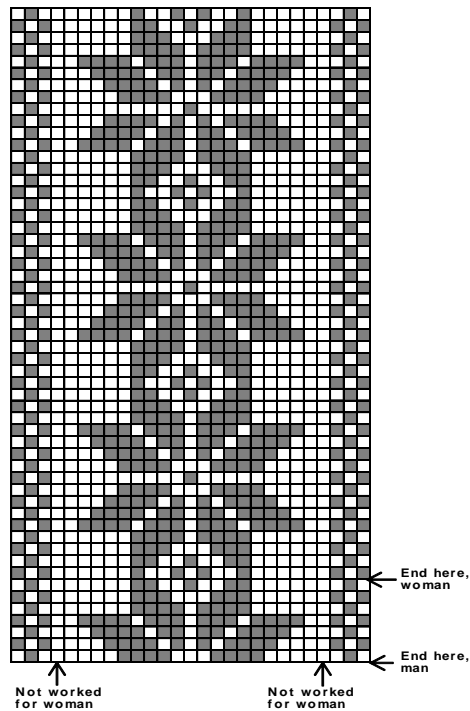
KNEELENGTH SOCKS

Using needles size 3mm, cast on 72 – 80 sts. Work in rnds 6 cm/2.4 in I K1,P1 rib. Change to needles size 3½ mm. Work in patt B, and inc evenly across 1st rnd number of sts to be 80 – 88 sts. When patt B is ready, work in patt A and dec approx. every 2 cm/0.8 in as charted until 50 – 54 sts rem, and work measures approx. 32 – 36 cm/12.6-14.2 in. Work in patt B.

Heel: Slip 25 – 27 sts on holder. Work back and forth in patt C over rem 25 – 27 sts (12 – 13 sts both sides of mid back st). Purl 1 row over all sts. Knit 17– 19 sts, turn, slip first st, purl 9 – 11 sts, turn, slip first st, and work 1 st more each time until 2 sts rem at each sides, turn and knit 1 row. You have now reached left side of the heel. Knit up 15 sts along left edge of the heel, work in patt D over 25 – 27 sts on holder, and knit up 15 sts along right edge of the heel. Cont working in rnds, St st over sole sts and both sides of the heel, and patt D over sts on top of the foot, and dec 1 st both sides of patt D until 50 – 54 sts rem. When patt D is ready, beg dec.

Dec: Place markers each side of patt D. Knit 1 rnd over all sts. Dec 1 st both sides of the markers every 2nd rnd 2 times, and then every rnd until 12 sts rem. Break yarn, thread through rem sts, pull tightly, and weave in on WS. Weave in all ends on WS.

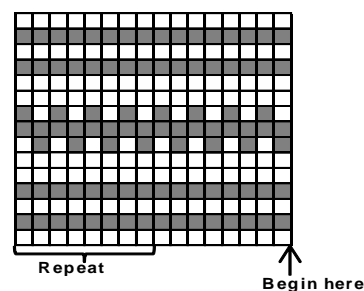
Pattern D



Not worked for woman

Not worked for woman

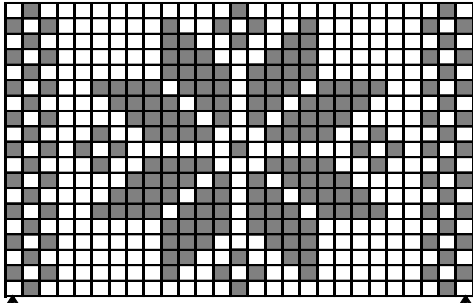
Pattern B



Repeat

Begin here

Pattern C



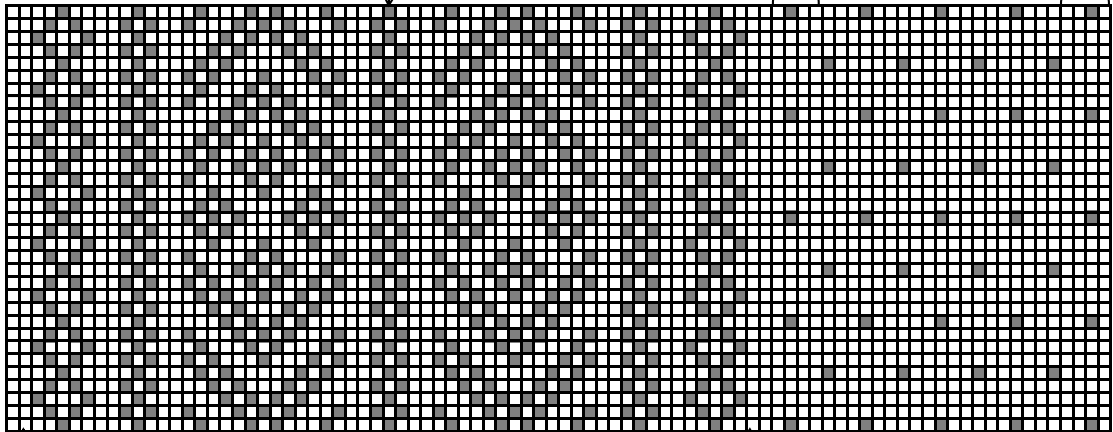
Not worked
for woman

Not worked
for woman

☐ : Knit on RS. purl on WS

■ : Purl on RS. knit on WS

Pattern A



Mid front

Not worked for woman

Not worked for woman

Repeat

SI 1 st. K1. pssso

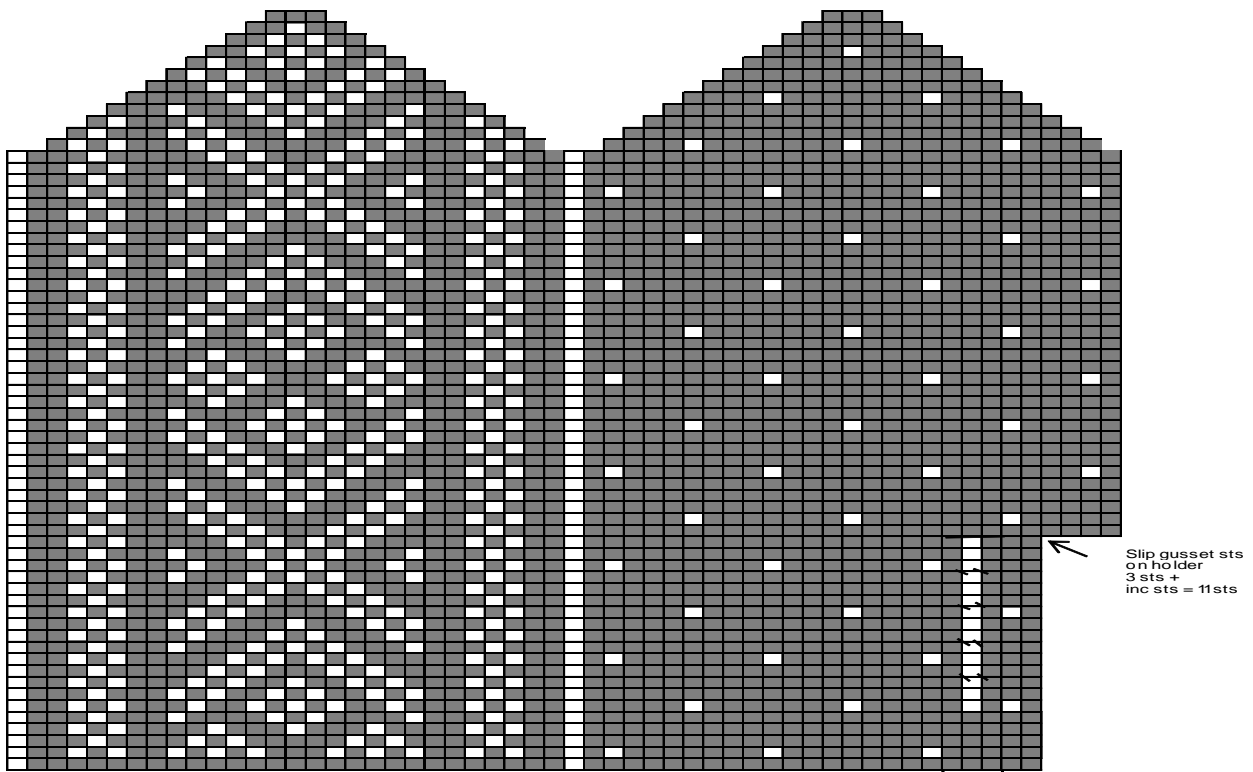
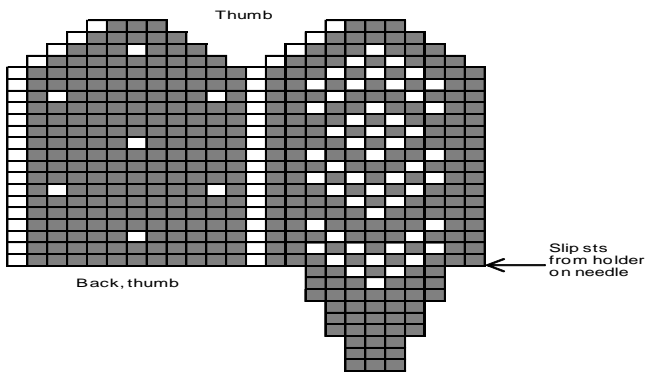
K2toa

Mid back

MITTENS

Using needles size 3 mm, cast on 48 sts. Work 7 cm/2.8 in in K1,P1 rib. Change to needles size 3½ mm. Work in patt as charted, and inc evenly across 1st rnd number of sts to be 52 sts. Inc for thumb gusset as charted. Slip gusset sts on holder as charted. Cast on 7 sts over gusset sts = 56 sts. Cont working as charted.

Thumb: Slip gusset sts on a needle. Pick up 9 sts from the upper edge of thumb opening + 2 sts from each side = 24 sts. Work in patt as charted for thumb.

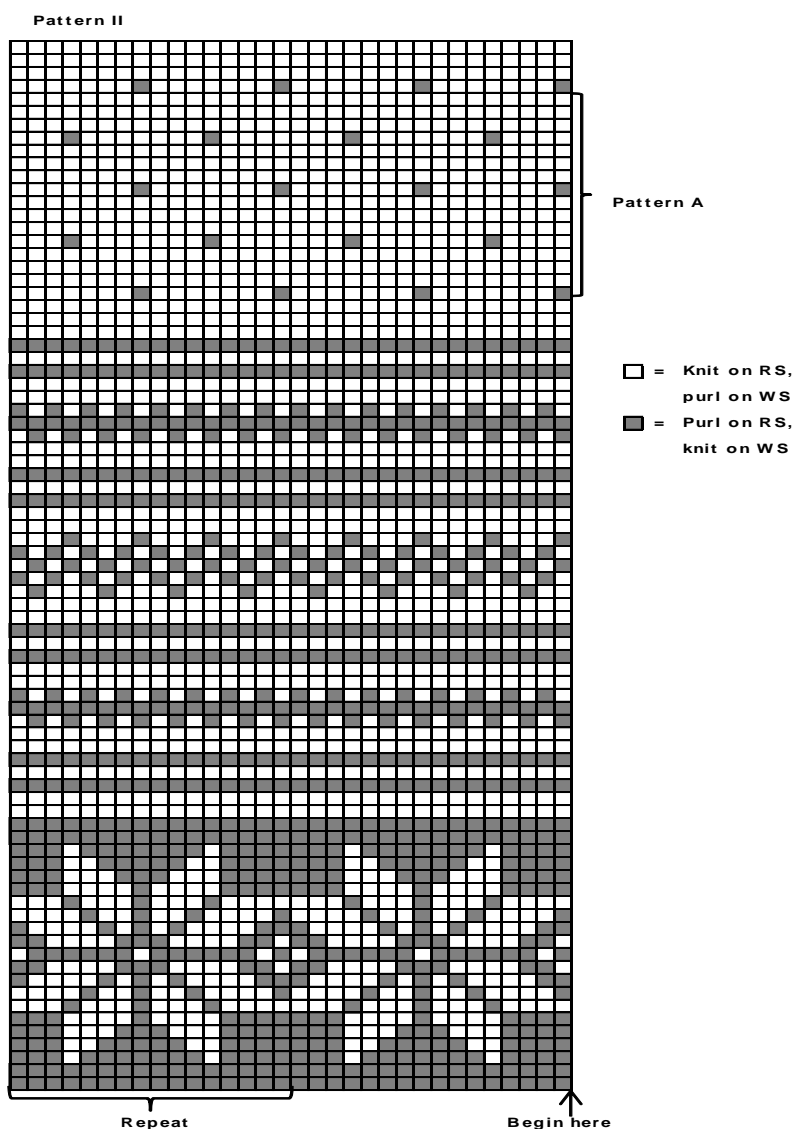


Inc for thumb gusset
 (These sts + inc sts will be slipped on holder = 11 sts)

- = purl
- = knit
- = M 1= Pick up white strand between sts. Ktbl with white yarn
- = Twist yarns here

SCARF

Using needles size 3½ mm, cast on 64 sts. Work back and forth in patt I, and keep rep it until work measures 16 cm/6.3 in (end with a complete square). Work 2 rows in St st, and inc evenly across 1st row number of sts to be 67 sts. Cont working in patt II inside 1 selvage st at each edge. When patt II is ready, work patt III, and after that patt A, keep rep it until work measures approx. 90 cm/35.4 in = mid scarf. Place a marker. Work in patt A double the length before marker. Work patt III (turn chart upside down), and then patt II (turn chart upside down). Work 2 rows in St st, and dec evenly across 2nd row number of sts to be 64 sts. Work approx. 16 cm/6.3 in in patt I (same number of squares as in beg). Bind off knit-sts knitwise, and purl-sts purlwise. Weave in all ends on WS.



HAT

Using needles size 3 mm, cast on 120 sts. Work in rnds 6 cm/2.4 in K1,P1 rib. Change to needles size 3½ mm. Work in patt II as charted, **and** inc evenly across 1st rnd number of sts to be 128 sts. When patt is ready, beg dec: *Knit all sts tog in pairs. Work 2 rnds in Garter st*, rep *-* 3 times = 8 sts rem. Break yarn, thread through rem sts, pull tightly, and weave in on WS.

Viking Superwash

Hat and scarf

1213-17

Size

Adult

ALTERNATIVE YARN: Viking Superwash (100% wool, superwash), Viking Alpaca Sport (30% alpaca, 40% merino wool, 30% nylon), Viking Sportsragg (60% wool, 20% nylon, 20% acrylic), Viking Sportsgarn (100% wool), 50 g ball

HAT

White, 100 1 ball
Light Grey, 113 1 ball
Fox4you, 512 1 ball

SCARF

White, 100 6 balls
Light Grey, 113 4 balls

Circular needle size 3 and 3½ mm – US 2 or 3 and 4 – UK/Canadian 11 and 10 or 9

+ crochet hook size 3 mm – US C/2 and D/3. + needles size 8 mm for pompon – US 11 – UK/Canadian 0

Gauge: 23 sts = approx 10 cm/4 in over St st using needles size 3½ mm. **Check your gauge to ensure success.**

When working in a patt with 2 clr, it's important to maintain order of yarns on your finger. Always hold the darker clr in front throughout the whole project.

HAT

Beg from one earflap.

Using needles size 3½ mm and white yarn, cast on 19 sts. Work in patt A as charted. Inc as charted. When patt A is ready, work patt B, **and** inc 1 st every row at one side (= back) and every 2nd row at the other side (= front). Leave work aside after 6 rows.

Work same for the other earflap, but in reverse.

Slip both earflaps on, and cast on 11 sts between them = back.

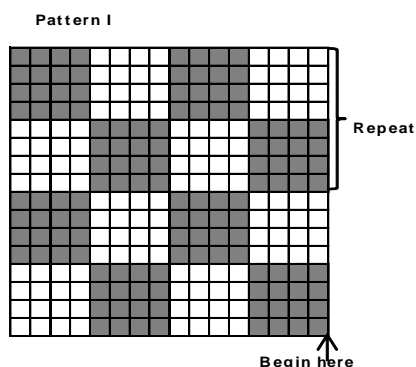
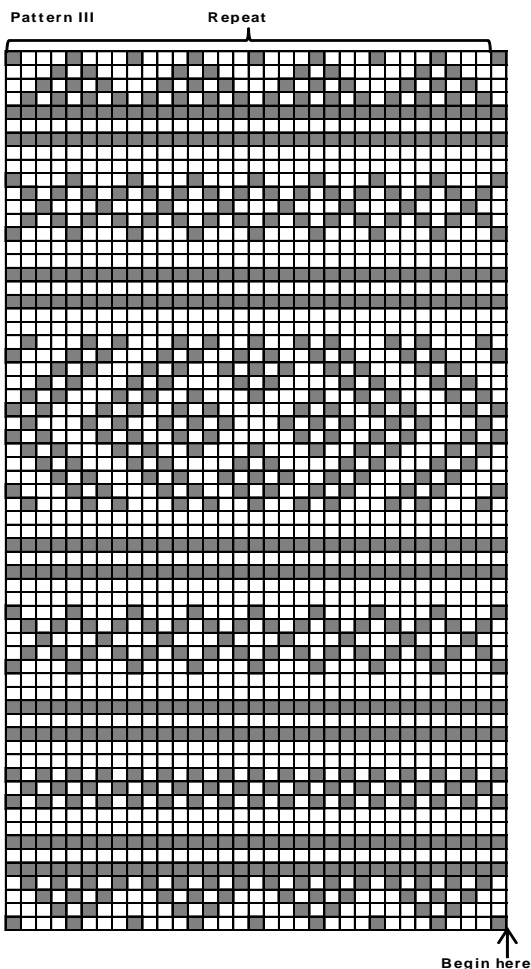
Cont working back and forth, and inc 1 st beg and end of each row 10 times = 107 sts. Using white yarn, cast on 21 sts (= mid front) = 128 sts on a rnd. Cont working in rnds in patt C. When patt C is ready, inc evenly across number of sts to be 130 sts.

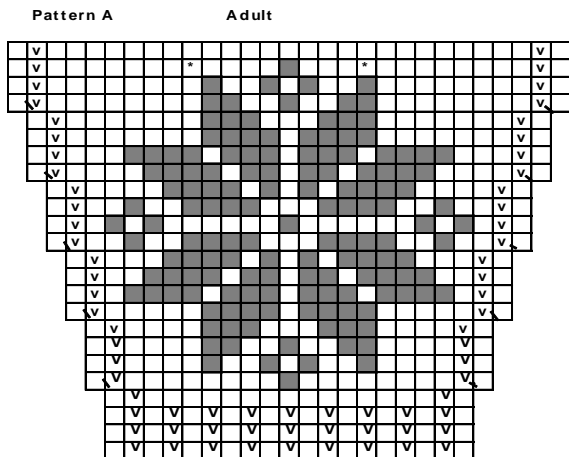
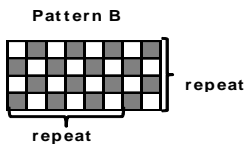
Work in patt B, and beg dec: Using white yarn, *K8, K2tog*, rep *-* across the rnd. Knit 1 rnd. Rep dec with 1 st less between each dec every 2nd rnd until 13 sts rem.

Break yarn, thread through rem sts, and weave in on WS. Using crochet hook size 3 mm and white yarn, crochet 1 sc-rnd along lower edge.

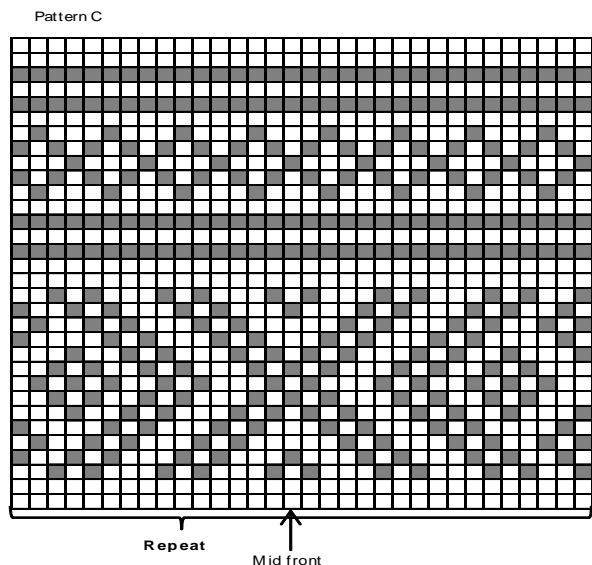
Pompon (Fox4you)

Using needles size 8 mm, cast on 4 sts. Knit 1 row, and inc 1 st to each st = 8 sts. Divide sts on 4 dpn. Next rnd: Inc evenly across number of sts to be 16 sts. Knit 1 rnd. Next rnd: Inc evenly across number of sts to be 24 sts. Work 4 rnds in St st. Next rnd: Dec evenly across number of sts to be 16 sts. Knit 1 rnd. Next rnd: Knit all sts tog in pairs = 8 sts. Next rnd: Knit all sts tog in pairs = 4 sts. Break yarn, thread through rem sts, and weave in on WS. Turn work inside out. Thread cast-on yarn through cast-on sts, pull tightly, and fasten pompon on top of the hat.





- = White
- = Grey
- = Purl on RS, knit on WS
- = M 1



SCARF

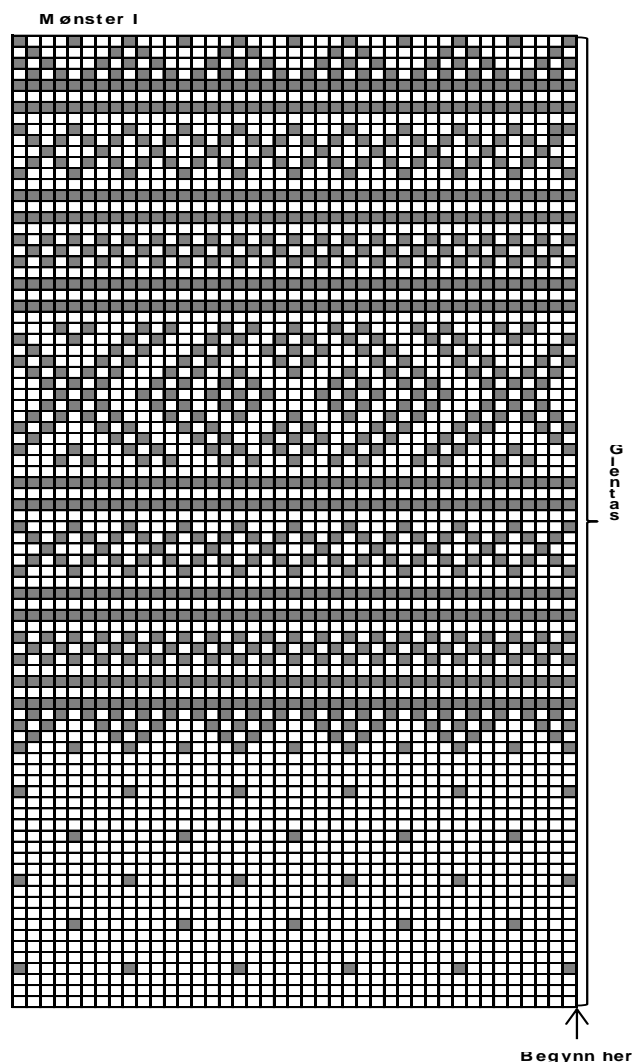
Worked in 3 pieces

First piece: Using needles size 3½ mm and white yarn, cast on 40 sts. Work in St st. When work measures 150 cm/59.1 in, bind off

Second piece: Using needles size 3½ mm and light grey yarn, cast on 40 sts. Work in St st. When work measures 150 cm/59.1 in, bind off.

Third piece: Using needles size 3½ mm and white yarn, cast on 41 sts. Work in patt I as charted. When work measures 150 cm/59.1 in, bind off.

Finishing: Don't dampen the pieces. Plait pieces tog loosely. Sew ends tog, white to white, grey to grey, and patt to patt piece.



- Ivs ara
- hvit

Viking Superwash

Kneelength socks

1213-18

Size Woman
 Length, approx. 45 cm
17.7 in

ALTERNATIVE YARN: Viking Superwash (100% wool, superwash), Viking Alpaca Sport (30% alpaca, 40% merino wool, 30% nylon), Viking Sportsragg (60% wool, 20% nylon, 20% acrylic), Viking Sportsgarn (100% wool), 50 g ball

White, 100 5 balls
 Light Grey, 113 2 balls

Circular needle and double pointed needles size 3 and 3½ mm
 – US 2 or 3 and 4 – UK/Canadian 11 and 10 or 9 + some elastic

Gauge: 23 sts = approx. 10 cm/4 in over St st using needles size 3½ mm. **Check your gauge to ensure success.**

When working in a patt with 2 clrs, it's important to maintain order of clrs on your finger. Always hold the darker clr in front throughout the whole project

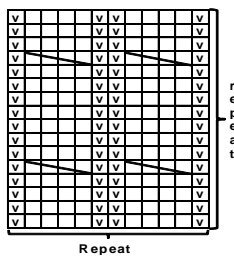
Using needles size 3 mm and white yarn, cast on 80 sts. Work in rnds 6 cm/2.4 in in K1,P1 rib. Change to needles size 3½ mm. Place a marker beg of rnd (= inner seam). Work in patt A, and after that 2 rnds in St st with white yarn. Inc. evenly across 2nd rnd number of sts to be 120 sts. Work in patt I, and dec 1 st both sides of the marker approx. every 1 cm/0.4 in 78 sts rem, and work measures approx. 34 cm/13.4 in. Change to needles size 3 mm. Knit 1 rnd, and dec evenly across number of sts to be 52 sts. Work approx. 2 cm/0.8 in in K1,P1 rib. Change to needles size 3½ mm, and work patt B.

Heel: Slip first 27 sts on holder. Work back and forth in patt C over rem 25 sts. Purl 1 row with light grey yarn over all sts. Knit 19 sts, turn, slip first st, purl 11 sts, turn, slip first st, and work 1 st more each time until 2 sts rem at each side, turn, and knit 1 row. You have now reached left edge of the heel. Knit up 15 sts in patt E along left edge of the heel, work patt D over 27 sts on holder, and knit up 15 sts in patt E along right edge of the heel. Cont working in rnds with patt E over sole sts and each side of the heel, and patt D over sts on top of the foot, and dec 1 st both sides of patt D every rnd until 54 sts rem. When patt D is ready, beg dec.

Dec: Place markers each side of patt D. Knit 1 rnd with grey yarn over all sts. Dec 1 st both sides of markers every 2nd rnd 2 times, and after that every rnd until 12 sts rem. Break yarn, thread through rem sts, pull tightly, and weave in on WS. Weave in all ends on WS.

Work same for the other sock, but work heel over last 25 sts, and dec for leg on the opposite side.

Pattern I



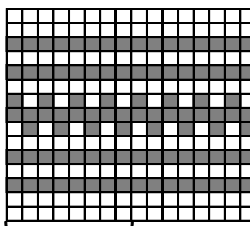
Repeat

□ = knit

◻ = purl

▨ = Sl 2 sts on cn, hold to front. K2, knit sts from cn

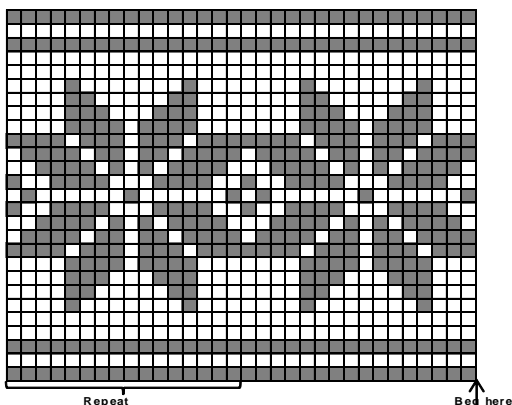
Pattern B



Repeat

Beg here

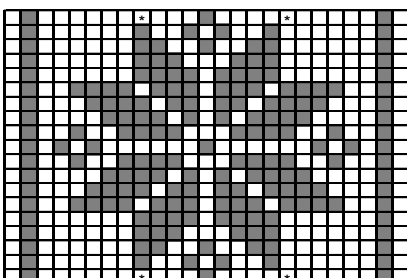
Pattern A



Repeat

Beg here

Pattern C

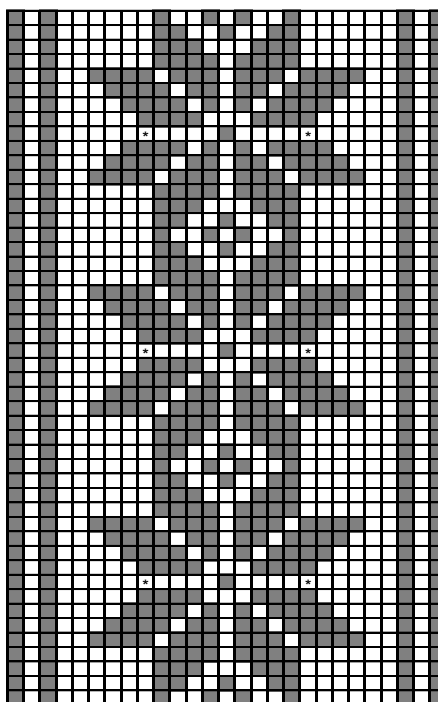


□ = White

■ = Light Grey

◻ = Twist yarns to avoid long strands on WS

Pattern D



Pattern E



Repeat

Begin here

Viking Superwash

Vest

1213-19

Size	S	M	L	XL
Bust	90	102	117	131 cm
	35.4	40.2	46.1	51.6 in
Length	98	99	100	100 cm
	38.6	39	39.4	39.4 in

ALTERNATIVE YARN: Viking Superwash (100% wool, superwash), Viking Alpaca Sport (30% alpaca, 40% merino wool, 30% nylon), Viking Sportsragg (60% wool, 20% nylon, 20% acrylic), Viking Sportsgarn (100% wool), 50 g ball

White, 100	7	8	8	9 balls
Light Grey, 113	6	6	7	7 balls
Grey, 115	2	2	3	3 balls

Circular needle and double pointed needles size 3 and 3 ½ mm – US 2 or 3 and 4 – UK/Canadian 11 and 10 or 9

Gauge: 23 sts = approx. 10 cm/4 in over St st using needles size 3½ mm. **Check your gauge to ensure success.**

When working in a patt with 2 clr, it's important to maintain order of yarns over your finger. Always hold the darker clr in front throughout the whole project.

VEST

Using needles size 3½ mm and light grey yarn, cast on 208 – 240 – 272 – 304 sts. Work 1 row in St st. Inc evenly across number of sts to be 312 – 360 – 408 – 456 sts. Work in patt I until work measures approx. 12 cm/4.7 in (= 4 cable twists. End as charted). Slip first and last 12 sts on holder (= for front bands). Work 1 rnd in St st, and dec all purl-sts = 193 – 225 – 257 – 289 sts (front band sts are not included), cast on 4 sts end of rnd (= will be cut open later on, purl each rnd). Work in patt X. When patt X is ready, work 1 rnd in St st, and inc evenly across number of sts to be 288 – 336 – 384 – 432 sts. Cont working in patt I until cable patt measures approx. 12 cm/4.7 in (= 4 cable twists. End as charted). Work 1 rnd in St st, and dec all purl-sts = 193 – 225 – 257 – 289 sts (4 purl-sts are not incl.). Place markers each side, 44 – 52 – 60 – 68 sts for each front, and 105 – 121 – 137 – 153 sts for back. Work in patt Y, and beg dec for V-neck: Knit 1 st, sl 1 st, K1, pss0. Work until 3 sts rem (before purl-sts), K2tog, K1. Rep dec every 7th – 7th – 6th – 6th rnd. When work measures 75 cm/ 29.5 in, bind off first and last st on back for armholes. Cont working in rnds in patt, and cast on 4 sts over sts bound-off for armholes (= purl these sts each rnd). When work measures approx. 98 – 99 – 100 – 100 cm/38.6-39-39.4-39.4 in, and there is 28 – 35 – 42 – 50 left for shoulders, bind off.

Finishing: Dampen work slightly from WS. Sew 2 smallest zigzag seams around armholes and mid front. Cut open between seams. Sew normal zigzag over cut edges. Join shoulder seams.

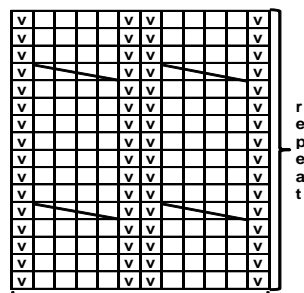
Front bands: Slip 12 sts from holder on needles size 3 mm. Cast on 4 sts to the side facing front piece for seam allowance (= worked in St st). Work patt I over 12 sts until front band measures up to mid back (take care that the front band doesn't turn too long). Bind off seam allowance sts, and leave rem sts on holder. Work same for the other front band.

Join mid back seam. Sew on front bands, and seam allowance over cut edges.

Armhole bands: Pick up approx. 106 – 110 – 114 – 114 sts between purl-st and 1st st for patt Y. Work 6 rnds in St st. Bind off.

Fold band, and sew on WS. Dampen the band. Work same for the armhole band.

Pattern I



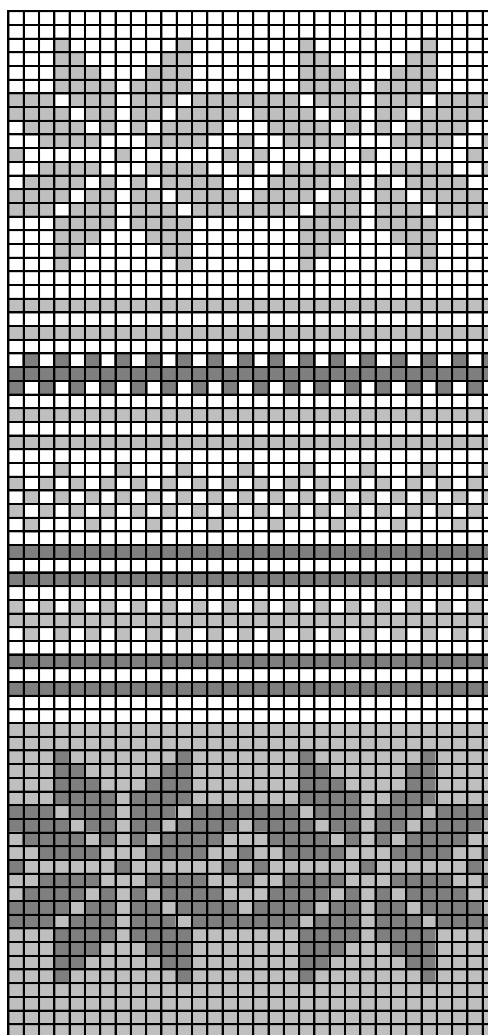
Repeat

□ = knit

◻ = purl

◻◻ = Slip 2 sts on cn, hold to front, K2, knit sts from cn

Pattern X

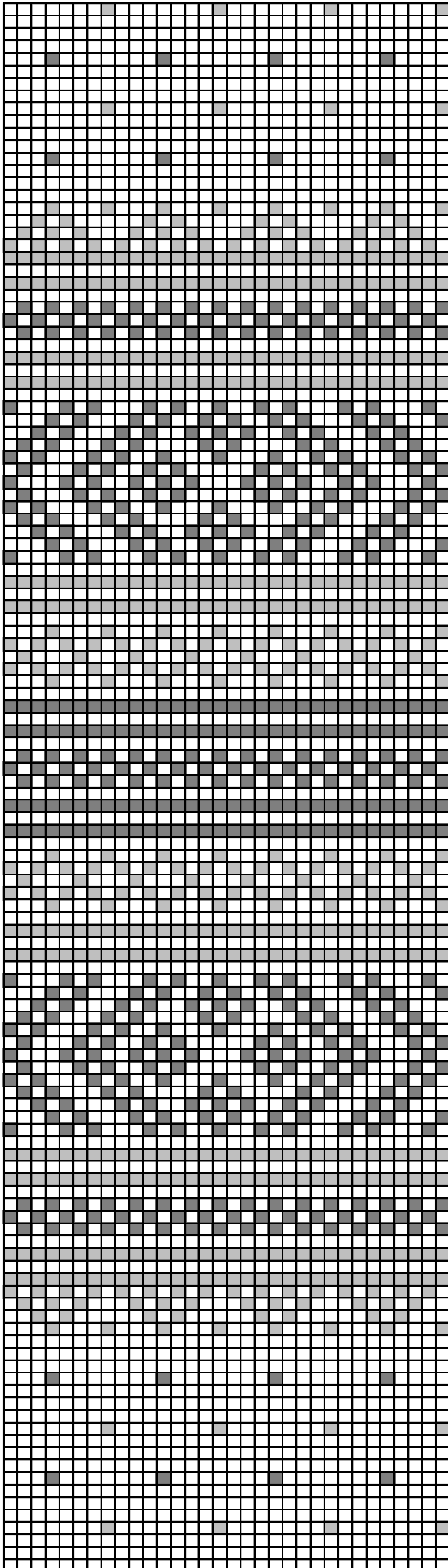


◻ = light grey

◼ = dark grey

□ = white

Pattern Y



Viking Superwash

Scarf

1213-20

Size

28 x 220 cm

11 x 86.6 in

ALTERNATIVE YARN: Viking Superwash (100% wool, superwash), Viking Alpaca Sport (30% alpaca, 40% merino wool, 30% nylon), Viking Sportsragg (60% wool, 20% nylon, 20% acrylic), Viking Sportsgarn (100% wool), 50 g ball

White, 100

11 balls

Light Grey, 113

6 balls

Grey, 115

3 balls

Circular needle size 3½ mm – US 2 or 3 and 4 – US/Canadian 11 and 10 or 9

+ crochet hook size 3 mm – US C/2 and D/3 – UK/Canadian 11

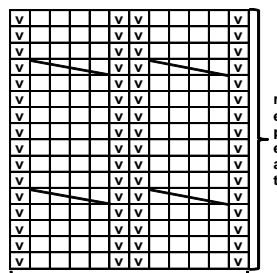
Gauge: 23 sts = approx 10 cm/4 in over St st using needles size 3½ mm. **Check your gauge to ensure success.**

When working in patt with 2 clrs, it's important to maintain order of yarns over your finger. Always hold the darker clr in front throughout the whole project.

SCARF

Using needles size 3½ mm and light grey yarn, cast on 128 sts. Work 2 rnds in St st. Inc evenly across number of sts to be 192 sts. Work in patt I until work measures 12 cm/4.7 in. Work in patt X, and dec evenly across 2nd rnd number of sts to be 128 sts. Cont working with white yarn, and work 2 rnds in St st. Inc evenly across 2nd rnd number of sts to be 192 sts. Work in patt I until work measures approx. 54 cm/21.3 in. Work in patt Y, and dec evenly across 1st rnd number of sts to be 128 sts. Cont working with white yarn, and work 3 rnds in St st. Inc evenly across 3rd rnd number of sts to be 192 sts. Work in patt I until work measures approx. 120 cm/47.2 in. Work in patt Y, and dec evenly across 1st rnd number of sts to be 128 sts. Cont working with white yarn, and inc evenly across 3rd rnd number of sts to be 192 sts. Work in patt I until work measures approx. 180 cm/70.9 in. Work in patt Z, and dec evenly across 1st rnd number of sts to be 128 sts. Cont working with light grey yarn, and work 2 rnds in St st rnds. Inc evenly across 2nd rnd number of sts to be 192 sts. Work in patt I until work measures 220 cm/86.6 in. Work 1 rnd in St st, and dec evenly across number of sts to be 128 sts. Bind off all sts. Crochet 1 sc-row to close the short edges.

Pattern I

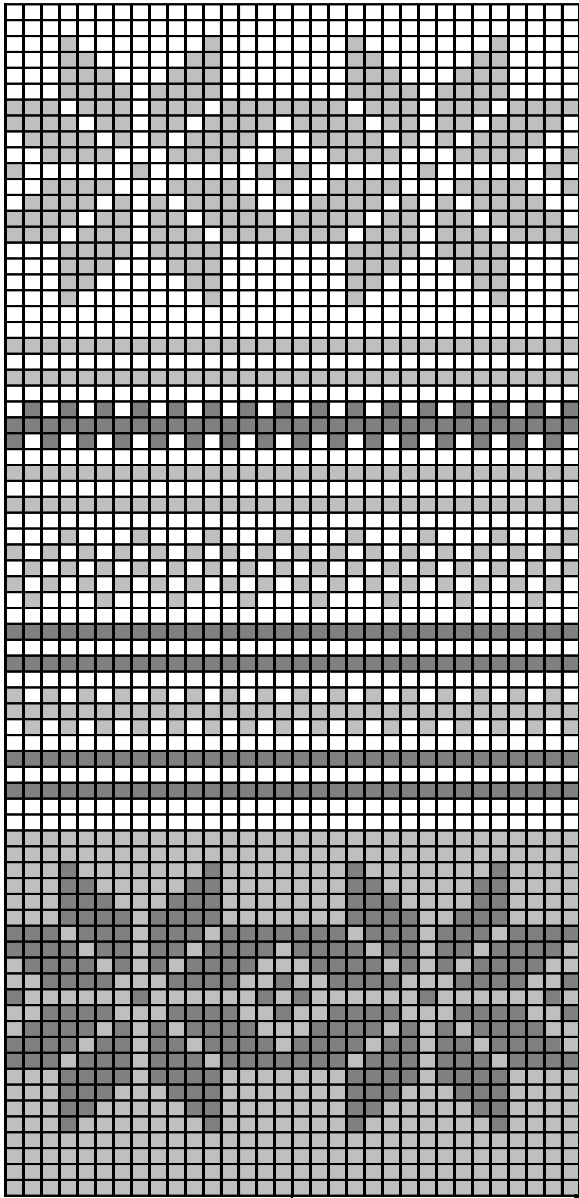


□ = knit

▣ = purl

▨ = Slip 2 sts on cn, hold to front, K2, knit sts from cn

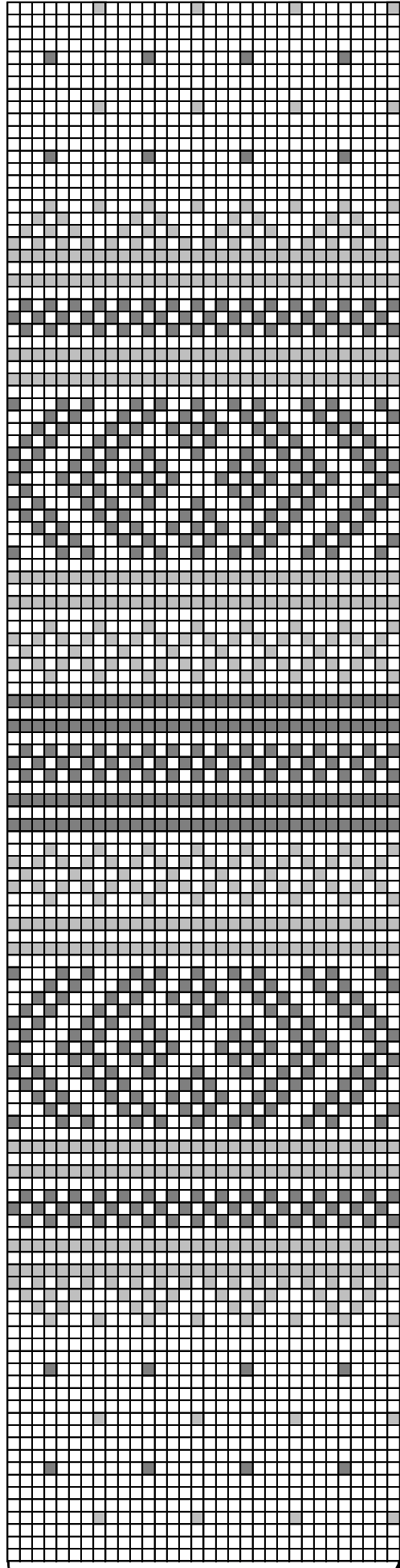
Pattern X



repeat ↑ Beg here

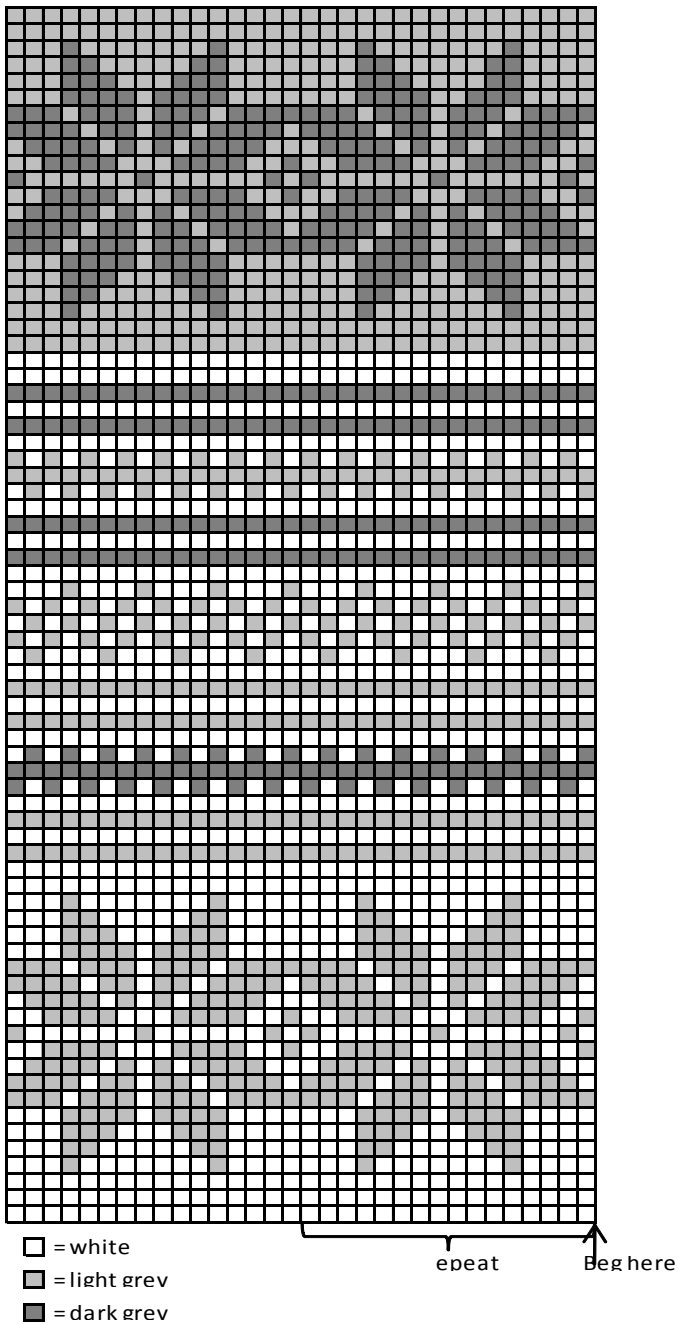
- = white
- = light grey
- = dark grey

Pattern Y



repeat ↑ beg here

Pattern Z



Viking Superwash

Hat, mittens and necklet

1213-21

Size

Adult

ALTERNATIVE YARN: Viking Superwash (100% wool, superwash), Viking Alpaca Sport (30% alpaca, 40% merino wool, 30% nylon), Viking Sportsragg (60% wool, 20% nylon, 20% acrylic), Viking Sportsgarn (100% wool), 50 g ball

HAT

Beige, 107 3 balls

MITTENS

Beige, 107 3 balls

NECKLET

Beige, 107 3 balls

Off-White, 102 3 balls

Brown, 118 3 balls

Circular needle and double pointed needles size 3 and 3½ mm – US 2 or 3 and 4 – UK/Canadian 11 and 10 or 9

Gauge: 23 sts = approx. 10 cm/4 in over St st using needles size 3½ mm. **Check your gauge to ensure success.**

HAT

Using needles size 3 mm, cast on 120 sts. Work 8 cm/3.1 in in K1,P1 rib. Change to needles size 3½ mm. Work 1 rnd in St st, and inc evenly across number of sts to be 224 sts. Cont working in patt I and dec as charted = 64 sts rem. Next rnd: Knit all sts tog in pairs. Work 2 rnds in St st. Rep dec = 16 sts rem. Break yarn, thread through rem sts, pull tightly, and weave in on WS.

MITTENS

Using needles size 3 mm, cast on 48 sts Work in rnds 2 cm/0.8 in in K1,P1 rib. Work 2 rnds in St st, and inc evenly over 2nd rnd number of sts to be 84 sts. Work in patt I as charted, and end as charted. Work 2 rnds in St st, and dec evenly across 1st rnd number of sts to be 48 sts. Change to needles size 3 mm. Turn work inside out. Work 12 cm/4.7 in in K1,P1 rib. All measurements are taken from rib. Change to needles size 3½ mm. Place markers each side, 24 sts for each side. Cont working in St st and patt II over 4 sts, with cable patt mid top of the mitten. Inc 2 sts to the cable across 1st rnd = 6 sts. Work 3 cm/1.2 in.

Thumb gusset: Beg from side marker, knit 3 sts, M1, K1, M1 = 3 sts. Cont working in rnds and inc for thumb gusset every 3rd rnd until you have 9 sts for the gusset. Slip gusset sts on holder. Cast on 7 sts over gusset sts, and cont working in rnds in St st and cable patt.

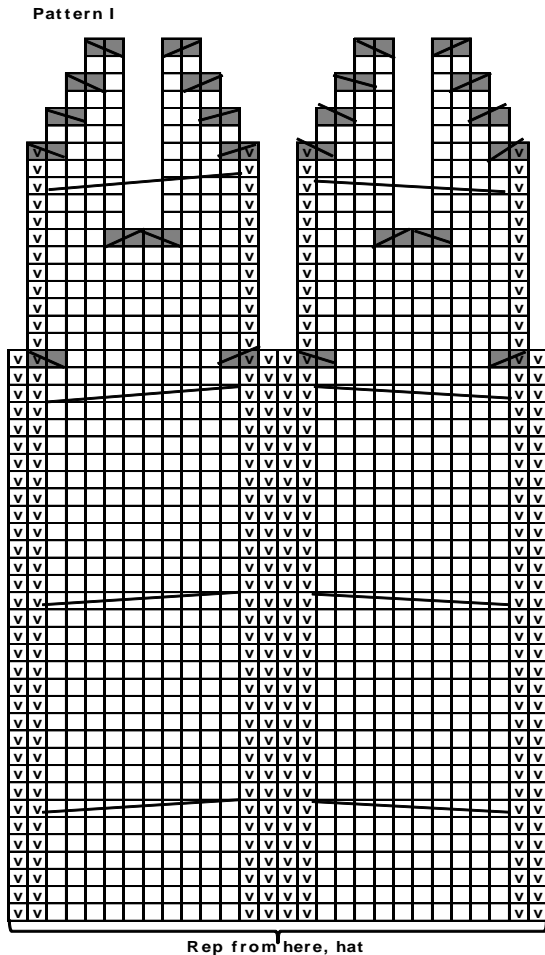
When work measures approx. 10 cm/4 in, measured from thumb opening (or desired length), dec 1 st at each side every 2nd rnd 3 times, before a marker: K2tog, after a marker: sl 1 st, K1, pssso. Rep dec every rnd until 8 sts rem. Cont working in cable patt as long as it is possible, and after that cont in St st, and dec 2 sts over cable. Break yarn, thread through rem sts, pull tightly, and weave in on WS.

Thumb: Slip gusset sts on needle size 3½ mm. Pick 1 st from each side and 9 sts from 7 cast-on sts = 20 sts. Work in rnds until thumb measures approx. 5 cm/2 in (or desired length). Place markers each side, and dec same as for mitten.

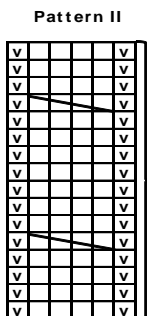
SCARF

When working in patt with 2 clr, it's important to maintain order of yarns over your finger. Always hold darker clr in front throughout whole project.

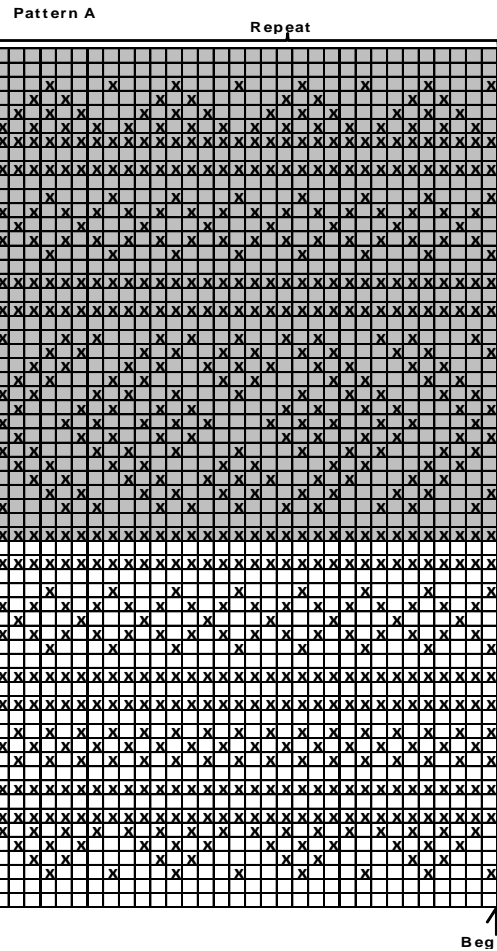
Using needles size 3 mm and beige yarn, cast on 416 sts. Work 4 cm/1.6 in in K1,P1 rib. Change to needles size 3½ mm, and work patt A. Change to needles 3 mm, and work with off-white yarn 4 cm/1.6 in in K1,P1 rib. Bind off in rib.



- = Knit
- = Purl
- = Slip 5 sts on cn, hold to front, K5, knit sts from cn
- = Slip 5 sts on cn, hold to back, K5, knit sts from cn
- = Sl 1 st, K1, pss0
- = K2tog



- = Slip 2 sts on cn, hold to front, K2, knit sts from cn



- : Off-white
- : Brown
- : Brown
- : Beige

Viking Superwash

Socks

1213-22

Size

Woman

Socks

Using needles size 3 mm, cast on 80 sts. Work in rnds 2 cm/0.8 in in K1,P1 rib. Change to needles size 3½ mm. Work 2 rnds in St st, and inc. evenly across 2nd rnd number of sts to be 140 sts. Work in patt I as charted. Work 2 rnds in St st, and dec evenly across first rnd number of sts to be 80 sts. Change to needles size 3 mm. Turn work inside out, and work 8 cm/3.1 in in K1,P1 rib. All measurements are taken from beg of rib.

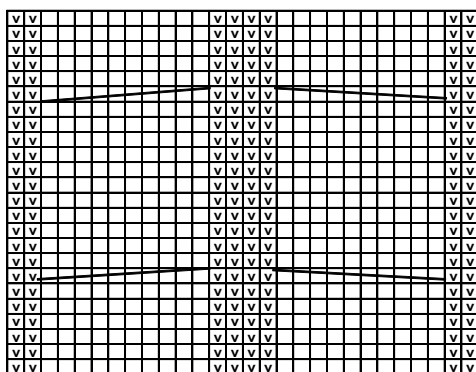
Change to needles size 3½ mm. Divide work to 4 parts by placing markers mid front and back, and each side. Inc as foll: Beg from side, 2 sts after marker. Work in St st over 36 sts, inc 2 sts evenly across next 4 sts = patt II. Work in St st over 16 sts,

inc 2 sts evenly across next 4 sts = patt II, mid front. Work in St st over 16 sts, and inc 2 sts evenly across last 4 sts = patt II. There is now one cable on each side, and one mid front. Cont working as established, and dec 1 st both sides of 36 back sts every 2 cm/0.8 in. Sl first st, K1, pssso, work until 2 sts rem, K2tog. Rep dec until 54 sts rem, and work measures approx. 32 cm/12.6 in. Cont working with mid front cable patt, and St st over rem sts, and dec 2 sts over the other cables on first rnd = 50 sts on a rnd. Work 3 rnds.

Heel: Slip 26 sts on holder (10 St sts, cable sts, and 10 St sts). Work back and forth in St st over rem 24 sts. Knit 17 sts, turn, slip first st, purl 10 sts, turn, slip first st, and work 1 st more each time until 2 sts rem each side. Turn, and knit 1 row. You have now reached left edge of the heel. Knit up 15 sts along left side of the heel, work St st over 10 sts, cable over 6 sts and St st over 10 sts (= sts from holder), and knit up 15 sts from right side of the heel. Cont working as established, with cable over mid front and St st over rem sts, and dec 1 st each side of heel every rnd until 50 sts rem. When foot measures approx. 22 cm/8.7 in, beg dec

Dec: Place markers both sides, 24 sts for sole, and 26 sts for upper part. Dec 1 st both sides of markers every 2nd rnd 2 times, and then every rnd until 12 sts rem. Cont working cable patt as long as it is possible, and after that cont with St st. Dec 2 sts over cable patt when you change to St st. Break yarn, thread through rem sts, pull tightly, and weave in on WS.

Pattern I



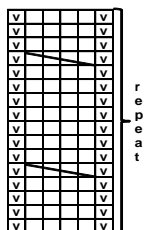
□ = Knit on RS, purl on WS

▽ = Purl on RS, knit on WS

= slip 5 sts on cn, hold to front, K5, knit sts from cn

= slip 5 sts on cn, hold to back, K5, knit sts from cn

Pattern II



= Slip 2 sts on cn, hold to front, K2, knit sts from cn

Viking Superwash

Scarf and hat

1213-23

Size

28 X 180 cm

11 x 70.9 in

ALTERNATIVE YARN: Viking Superwash (100% wool, superwash), Viking Alpaca Sport (30% alpaca, 40% merino wool, 30% nylon), Viking Sportsragg (60% wool, 20% nylon, 20% acrylic), Viking Sportsgarn (100% wool), 50 g ball

SCARF

Off-White, 102

7 balls

HAT

Off-White, 102

3 balls

Needles size 3½ mm – US 4 – UK/Canadian 10 or 9

Gauge: 23 sts = approx. 10 cm/4 in over St st using needles size 3½ mm. **Check your gauge to ensure success.**

SCARF

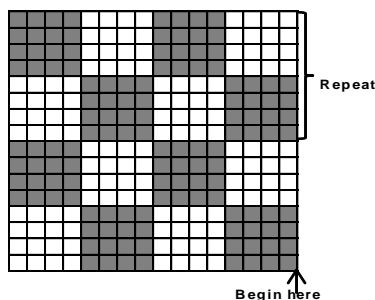
Using needles size 3½ mm, cast on 64 sts. Work back and forth in patt I until work measures approx. 16 cm/6.3 in (end with complete square). Work 2 rows in St st, and inc evenly across first row number of sts to be 67 sts. Work II inside 1 selvage st at each edge. When patt II is ready, work patt III, and after that patt A until work measures approx. 90 cm/35.4 in = one half of the scarf. Place a marker. Work double length in patt A, then patt III (turn chart upside down), and then patt II (turn chart upside down). Work 2 rows in St st, and dec evenly across 2nd row number of sts to be 64 sts. Work 16 cm/6.3 in in patt I (same number of squares as in beg). Bind off, knit-sts knitwise, purl-sts purlwise.

Weave in all ends on WS.

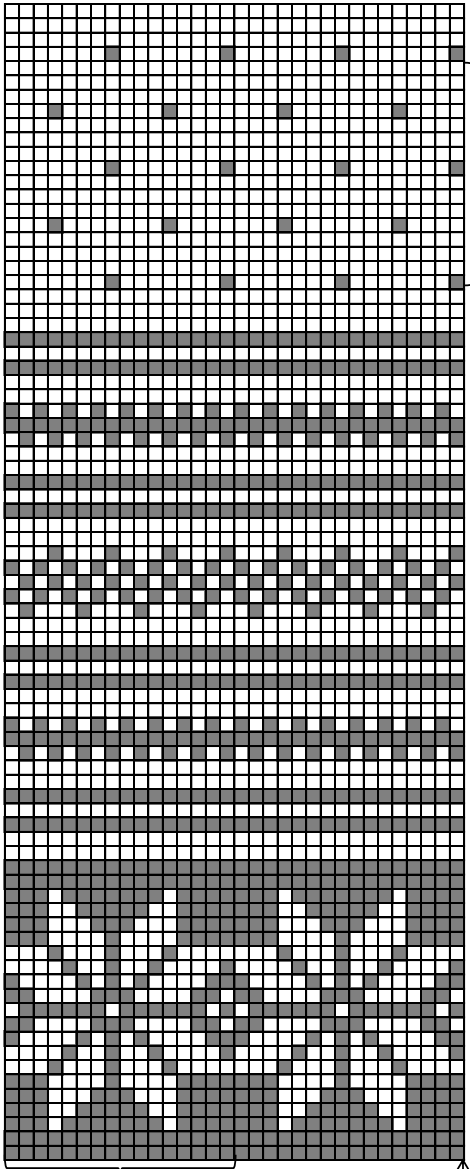
HAT

Using needles size 3 mm, cast on 120 sts. Work in rnds 6 cm/2.4 in in K1,P1 rib. Change to needles size 3½ mm. Work in patt II as charted, and inc evenly across 1st rnd number of sts to be 128 sts. When patt is ready, beg crown dec: *Knit sts tog in pairs. Work 2 rnds in Garter st*, rep *-* 3 times = 8 sts rem. Break yarn, thread through rem sts, pull tightly, and weave in on WS.

Pattern I



Pattern II



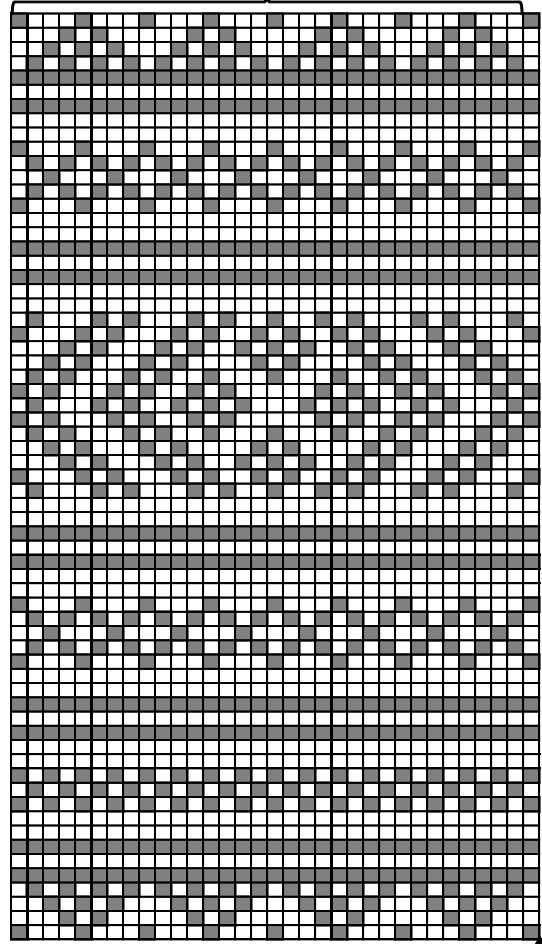
Pattern A

- = Knit on RS,
purl on WS
- = Purl on RS,
knit on WS

Repeat

Begin here

Pattern III Repeat



Begin here

Viking Superwash

Gloves and hat

1213-24

Size Woman

ALTERNATIVE YARN: Viking Superwash (100% wool, superwash), Viking Alpaca Sport (30% alpaca, 40% merino wool, 30% nylon), Viking Sportsragg (60% wool, 20% nylon, 20% acrylic), Viking Sportsgarn (100% wool), 50 g ball

GLOVES

Dark Grey, 117 2 balls
White, 100 1 ball

HAT

White, 100
4 balls

Double pointed needles size 3 and 3½ mm – US 2 or 3 and 4 – UK/Canadian 11 and 10 or 9
+ Setesdal band, approx. 1,5 m/59.1 in + 4 pewter buttons

Gauge: 23 sts = approx. 10 cm/4 in over St st using needles size 3½ mm. **Check your gauge to ensure success.**

Work for cuffs: Using needles size 3 mm and dark grey yarn, cast on 45 sts. Work back and forth in St st. When work measures 9 cm/3.5 in, cast on 15 sts beg of RS-row, and 8 sts to the end of the row. Purl 1 row over all sts (= folding edge) = 68 sts on a row. Work St st over 7 sts, purl 1 st, St st over 52 sts, and patt I over 8 sts (= buttonband). When work measures 2 cm/0.8 in, measured from folding edge, make 2 buttonholes over 3 sts (= bind off 3 sts, cast on 3 sts over bound-off sts on next row), 3 sts each side of purl-st. When work measures 6 cm/2.4 in, make another pair of similar buttonholes. When cuff measures 9 cm/3.5 in, change to needles size 3½ mm. Bind off 7 first sts, place 8 patt I sts under 8 buttonhole band sts, and knit these 8 sts tog (1 st from each needle). Work 1 rnd in St st, and adjust number of sts to be 52 sts. Beg with patt as charted, 17 sts before sts in patt I. Inc for thumb gusset as charted. Slip 9 gusset sts on holder as charted. Cast o 7 sts over gusset sts = 56 sts. Cont working as charted.

Index finger: Slip sts on 4 dpn, and cast on 5 sts between index and middle finger. Work with dark grey yarn until finger measures approx. 1 cm/0.4 in less than total length. Beg dec:

K3, K2tog, rep *-* across the rnd. Rep dec every rnd with 1 st less between dec until 8 sts rem. Break yarn, thread through rem sts, pull slightly, and weave in on WS.

Middle finger: Slip sts on 4 dpn, pick up 3 sts from index finger, and cast on 3 sts between middle and ring finger. Work and dec same as for index finger.

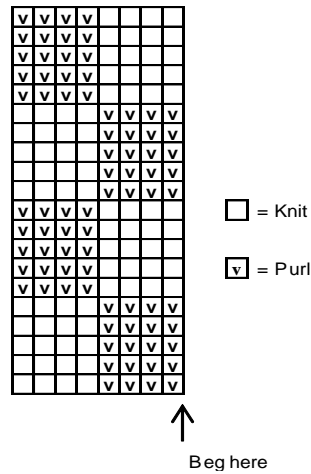
Ring finger: Slip sts on 4 dpn, pick up 4 sts from middle finger, and cast on 4 sts between ring and little finger. Work and dec same as for index finger.

Little finger: Slip sts on 4 dpn, pick up 3 sts from ring finger = 18 sts. Work and dec same as for index finger.

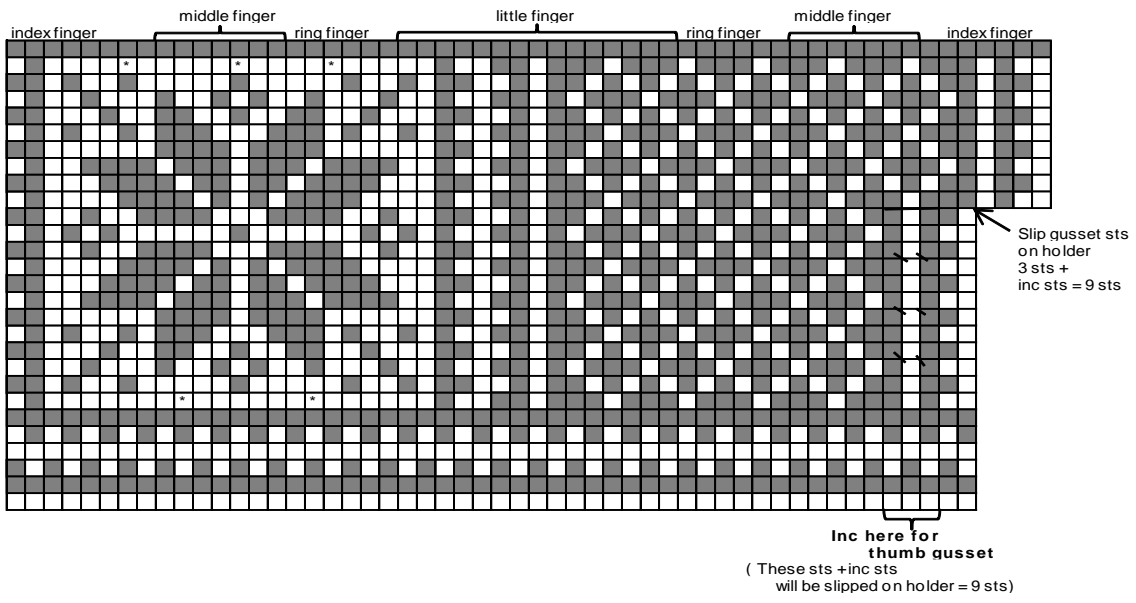
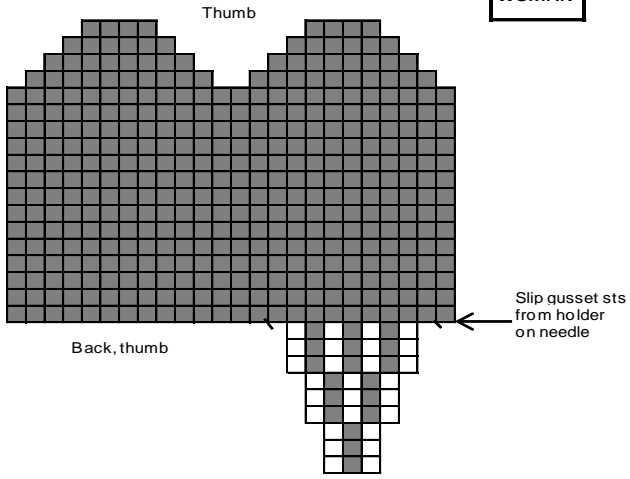
Thumb: Slip sts from holder on a needle. Pick up 9 sts from upper edge of thumb opening + 2 sts from each side = 22 sts. Work in patt as charted for thumb (Note! Don't forget last inc for thumb gusset = 24 sts).

Work same for the other glove, but in reverse. Cast on 45 sts for cuff, and work 9 cm/3.5 in in St st, cast on 8 sts for patt I beg of row, and 15 sts end of the row after 9 cm/3.5 in. Work as charted, from left to right. Sew on band and buttons.

Pattern I



WOMAN



☐ = White

■ = Dark Grey

☐ = M 1 = Pick up white strand between sts, Ktbl with white yarn

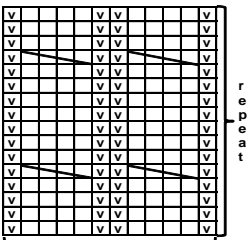
☐* = Twist yarns here

CABLED HAT

Using needles size 3 mm, cast on 132 sts. Work as foll: *K1,P1 rib over 21 sts, patt I over 12 sts*, rep *-* 4 times. Work as established until work measures approx. 7 cm/2.8 in (end as charted). Change to needles size 3½ mm.

Inc evenly across each rib panel number of sts to be 36 sts = 192 sts on a rnd. Work in patt I until work measures approx. 26 cm/10.2 in. End cable patt as charted. Next rnd: Dec all purl sts, sl last knit-st, knit next st, psso. K2tog. K2. Rep dec over each cable = 128 sts rem. Cont working in St st, and dec for crown: *Knit all sts tog in pairs. Work 2 rnds in St st*, rep altog. 4 times = 8 sts rem. Break yarn, thread through rem sts, pull tightly, and weave in on WS.

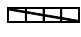
Pattern I



Repeat

□ = knit

◻ = purl

 = Slip 2 sts on cn, hold to front, K2, knit sts from cn

Viking Superwash

Mittens

1213-25

Size Man

ALTERNATIVE YARN: Viking Superwash (100% wool, superwash), Viking Alpaca Sport (30% alpaca, 40% merino wool, 30% nylon), Viking Sportsragg (60% wool, 20% nylon, 20% acrylic), Viking Sportsgarn (100% wool), 50 g ball

Dark Grey, 117

2 balls

White, 100

1 ball

Double pointed needles size 3 and 3½ mm – US 2 or 3 and 4 – UK/Canadian 11 and 10 or 9 + Setesdal band approx. 1,5 m/59.1 in + 4 pewter buttons

Gauge: 23 sts = approx. 10 cm/4 in over St st using needles size 3½ mm. **Check your gauge to ensure success.**

Cuff: Using needles size 3 mm and dark grey yarn, cast on 49 sts. Work back and forth in St st. When work measures 9 cm/3.5 in, cast on 15 sts beg of RS row and 8 sts end of the row. Purl 1 row over all sts (= folding edge). There is now 68 sts on a row.

Work St st over 7 sts, purl 1 st, St st over 56 sts and patt I over 8 sts (= buttonband). When work measures 2 cm/ in, measured from folding edge, make 2 buttonholes over 3 sts (= bind off 3 sts, cast on 3 sts over bound-off sts on next row), 3 sts on both sides of the purl-st. When work measures 6 cm/2.4 in, make another similar pair of buttonholes. When cuff measures 9 cm/ in, change to needles size 3½ mm. Bind off first 7 sts. Place 8 sts in patt I under 8 buttonhole band sts. nit these sts tog (1 st from each needle). Work 1 rnd in St st, and adjust number of sts to be 56 sts. Work 1 rnd in St st, and beg patt as charted, 18 sts before sts for patt I.

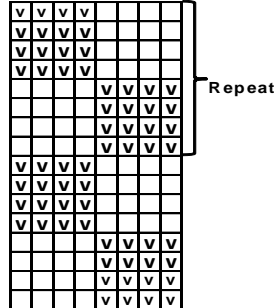
Inc for thumb gusset as charted. Slip 9 gusset sts on holder as charted. Cast on 7 sts over gusset sts = 60 sts. Cont working as charted.

Thumb: Slip gusset sts on a needle. Pick up 9 sts from upper edge of thumb + 2 sts from each side. Work in St st with dark grey yarn, and inc last time for gusset on first rnd = 24 sts. When work measures approx. 1 cm/0.4 in less than total length, place markers each side, and dec same as for mitten.

Work same for the other mitten, but in reverse. Cast on 49 sts for cuff, and work 9 cm/3.5 in in St st, cast on 8 sts for patt I beg of row, and 15 sts end of the row after 9 cm/3.5 in. Work as charted from left to right.

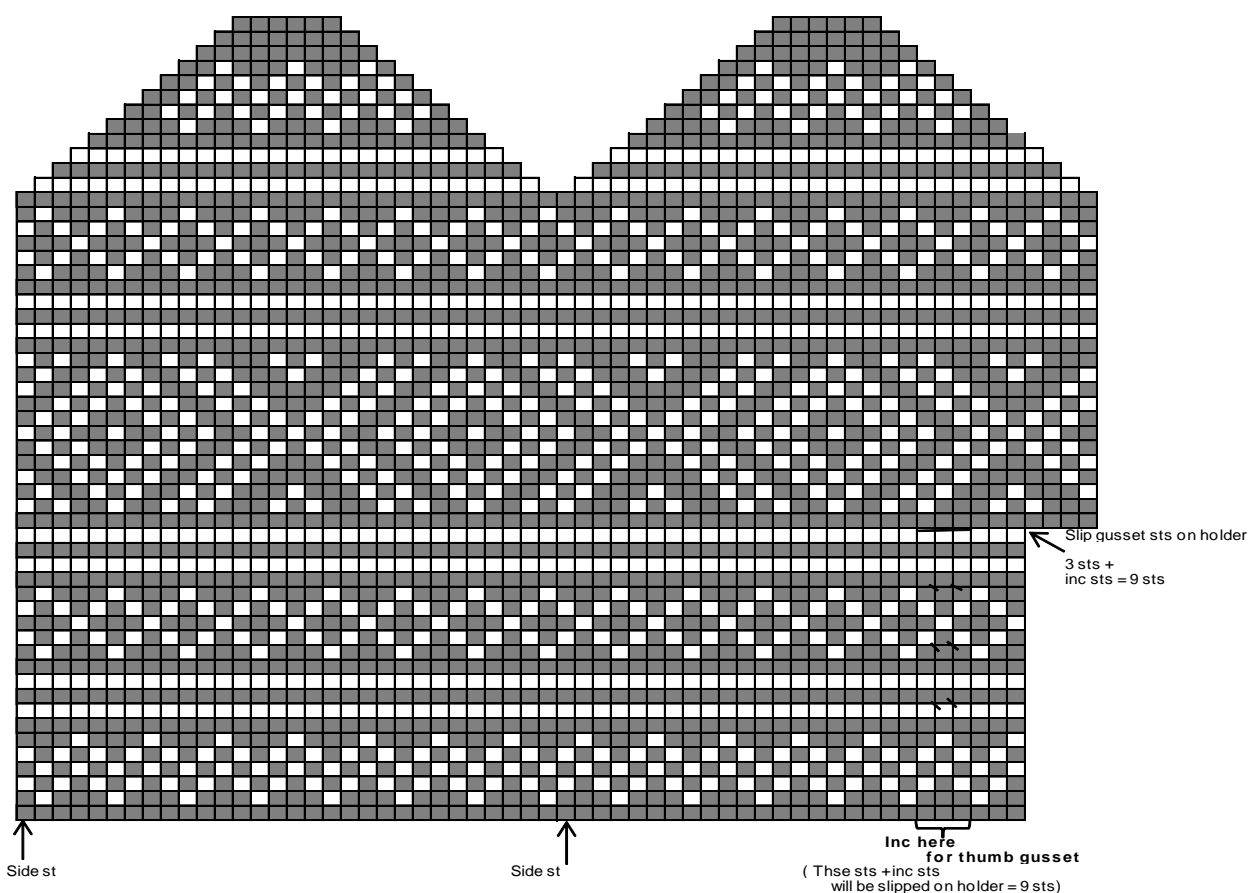
Sew on band and buttons.

Pattern I



◻ = purl

□ = knit



- = White
- = Dark Grey
- = M 1= Pick up white strand between sts, and Ktbl with white yarn
- = Twist yarns here

Viking Superwash

Afghan

1213-26

Size 152 x 200 cm
59.9 x 78.8 in

ALTERNATIVE YARN: Viking Superwash (100% wool, superwash), Viking Alpaca Sport (30% alpaca, 40% merino wool, 30% nylon), Viking Sportsragg (60% wool, 20% nylon, 20% acrylic), Viking Sportsgarn (100% wool), 50 g ball

Dark Grey, 117	22 balls
Grey, 115	13 balls
White, 102	10 balls

Circular needle and double pointed needles size 3 and 3½ mm – US 2 or 3 and 4 – UK/Canadian 11 and 10 or 9

Gauge: 23 sts = approx. 10 cm/4 in over St st using needles size 3½ mm. **Check your gauge to ensure success.**

When working in patt with 2 clrs, it's important to maintain order of yarns over your finger. Always hold darker clr in front throughout the whole project.

Using needles size 3 mm and grey yarn, cast on 352 sts. Work back and forth in patt I. When patt I is ready, slip 16 first and last sts on holder (= for borders). Change to needles size 3½ mm.

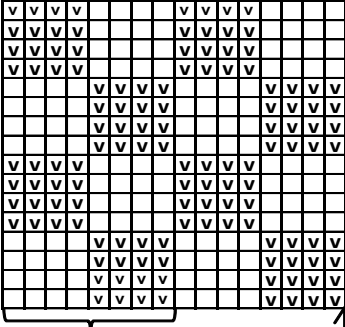
Work in rnds in patt A, and inc across 1st rnd number of sts to be 321 sts (border sts not incl). Cast on 4 sts to the end of the rnd (= purl each rnd) . When patt A is ready, work in St st with dark grey yarn until work measures approx, 38 cm/15 in. Work in patt B, and after that in St st with dark grey yarn until work measures approx. 86 cm/33.9 in. Work in patt C. After patt C, work in St st with dark grey yarn until work measures approx. 128 cm/50.4 in. Work in patt B, and after that St st with dark grey yarn until work measures 176 cm/69.3 in. Work in patt D.

Change to grey yarn, and work for the side borders. Slip 16 sts from one side on needles size 3 mm. Cast on 4 sts with grey yarn to the edge facing afghan (= work in St st). Work in patt I, and keep rep until order measures approx. 188 cm/74 in. End with a complete square (take care that the order doesn't turn too long). Bind off 4 sts for seam allowance, and leave rem 16 sts on holder. Work same for the other border.

Finishing: Dampen work slightly from WS. Sew 2 smallest zigzag seams over 4 purl-sts. Cut open between seams. Sew normal zigzag over cut edges.

Slip border sts from holders on same needle as afghan, and cont working back and forth in patt I over all sts. Dec 1 st over 1st row. Check that square patt continues on the sides. Work same number of squares in height as in beg, bind off, knit-sts knitwise, purl-sts purlwise.

Pattern I



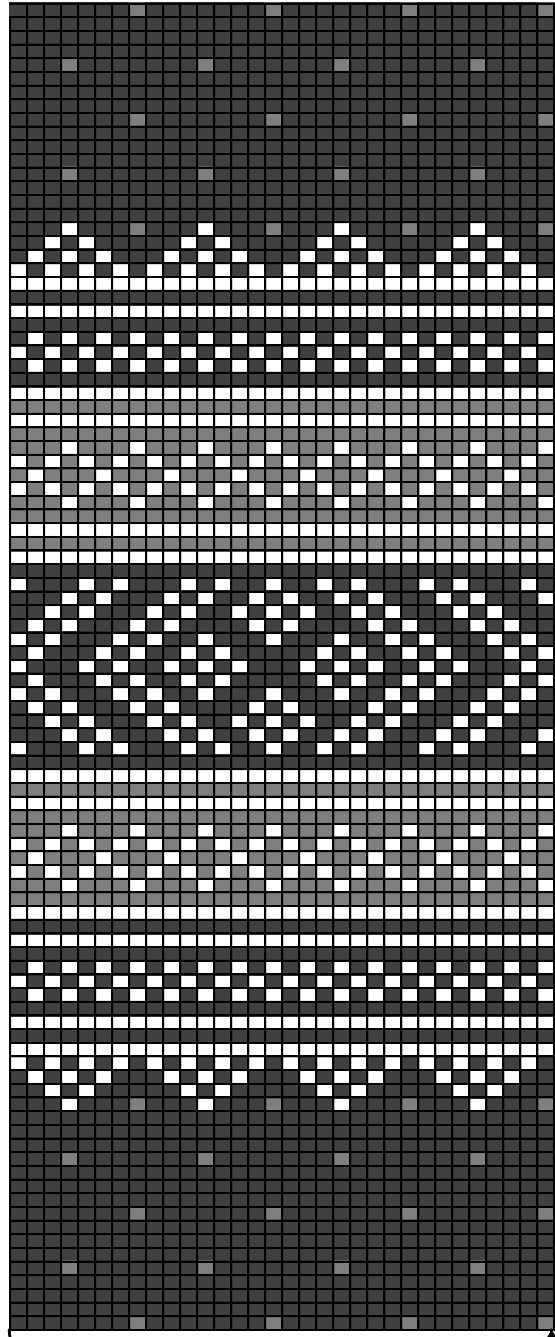
Repeat

Begin here

☑ = purl

☐ = knit

Pattern B



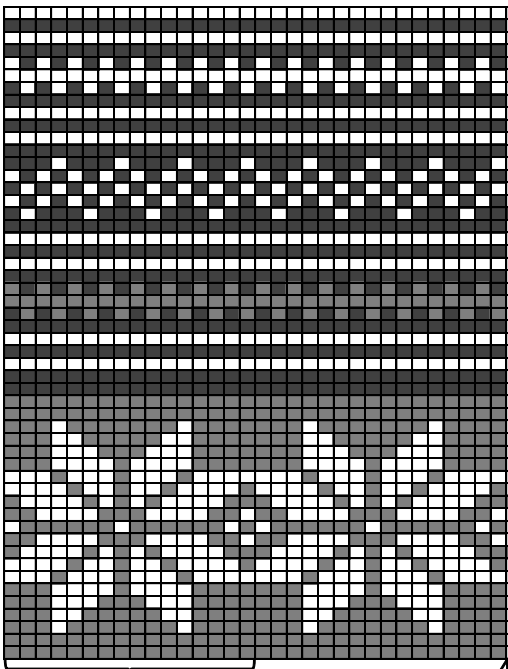
Repeat

Begin here

■ = Grey

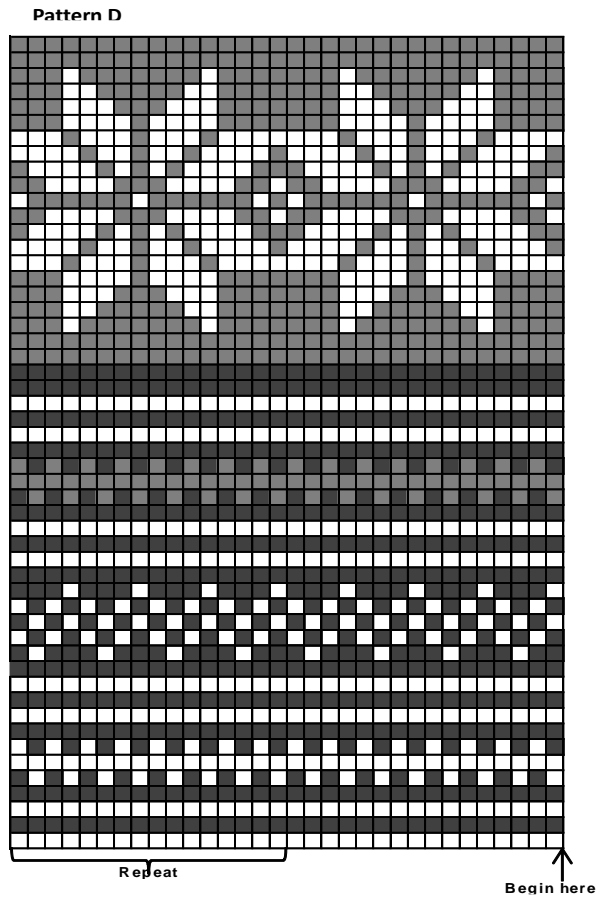
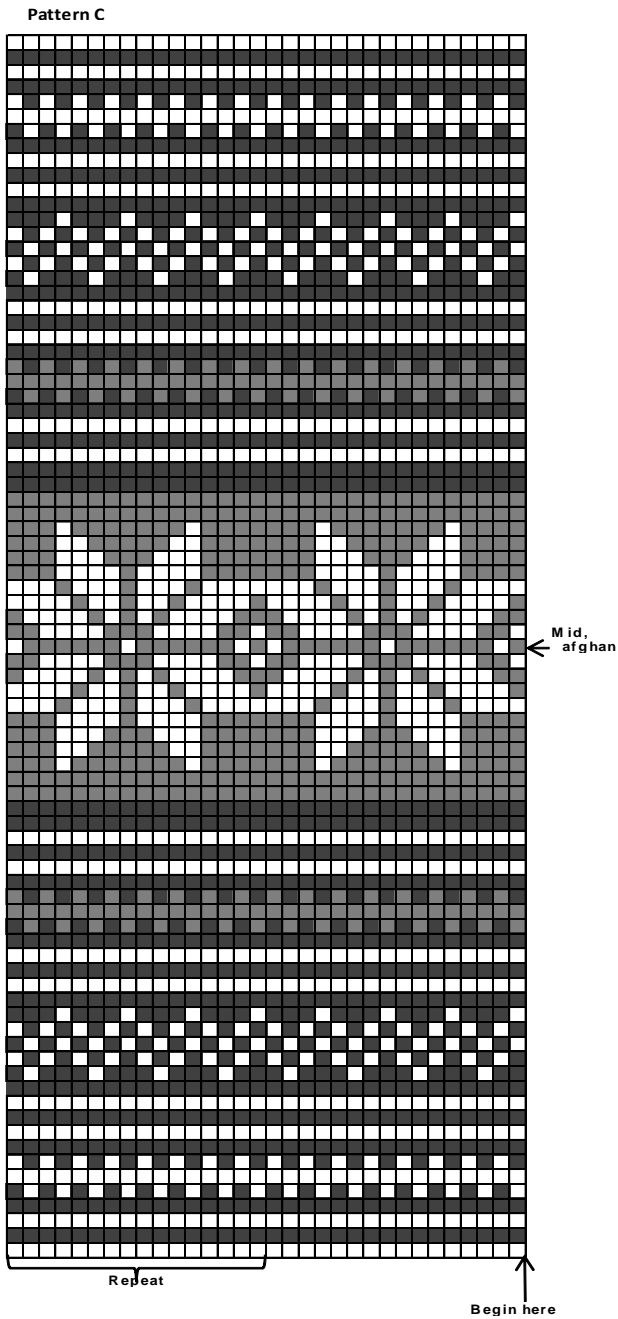
□ = White

■ = Dark Grey



Repeat

Begin here



Viking Superwash

Cushions

1213-26 a, b and c

Size

42 x 44 cm

16.5 x 17.3 in

ALTERNATIVE YARN: Viking Superwash (100% wool, superwash), Viking Alpaca Sport (30% alpaca, 40% merino wool, 30% nylon), Viking Sportsragg (60% wool, 20% nylon, 20% acrylic), Viking Sportsgarn (100% wool), 50 g ball

Cushion A

White, 100

4 balls

Grey, 113

2 balls

Cushion B

Wine, 162

8 balls

Cushion C

Dark Grey, 117

4 balls

Off-White, 102

2 balls

Grey, 115

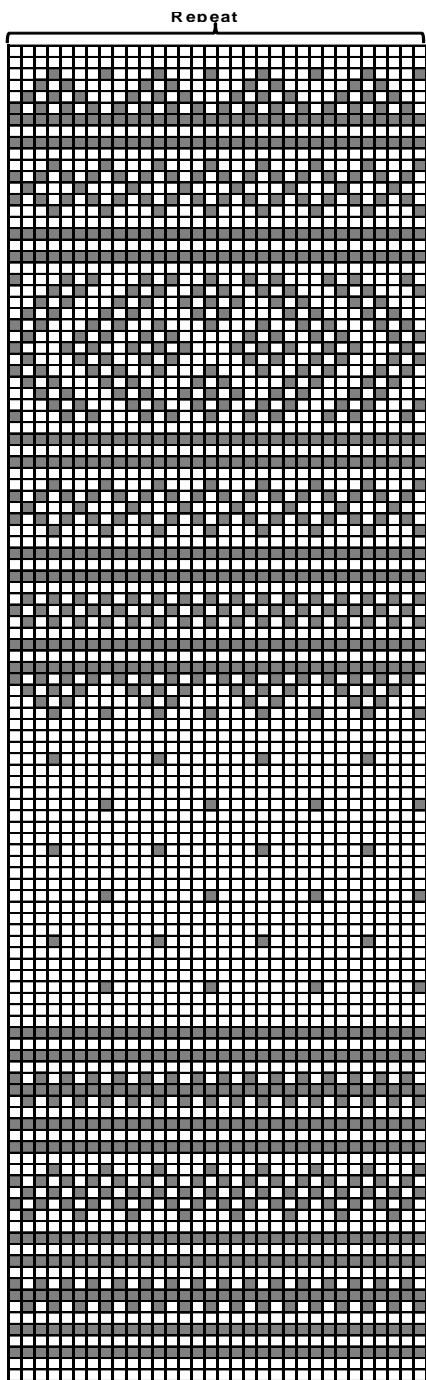
1 ball

Circular needle size 3½ mm – US 4 – UK/Canadian 10 or 9 + 40 cm/15.7 in long zipper

Gauge: 23 sts = approx. 10 cm/4 in over St st using needles size 3½ mm. **Check your gauge to ensure success.**

When working in patt with 2 clrs, it's important to maintain the order of yarns over your finger. Always hold darker color in front throughout the whole project.

Pattern A



- = White
- = Light Grey

Cushion A

Using needles size 3½ mm and white yarn, cast on 192 sts. Work in patt A as charted, and after that in St st with white yarn until work measures approx. 44 cm/17.3 in.

Finishing: Divide work on 2 needles, and join top seam. Sew a zipper to cast-on edge.

Weave in all ends on WS.

Cushion B

Using needles size 3½ mm, cast on 200 sts. Work 2 rnds in St st. Inc evenly across number of sts to be 300 sts. Work in patt B until work measures approx. 44 cm/17.3 in. End cable patt as charted.

Next row: Dec evenly across number of sts to be 200 sts. Divide work on 2 needles, and join seam cable by cable. Sew a zipper to cast-on edge.

Weave in all ends on WS.

Cushion C

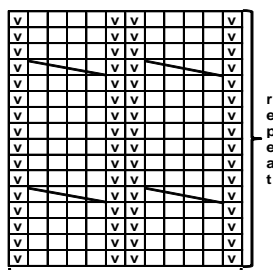
Using needles size 3½ mm and dark grey yarn, cast on 192 sts.

Work in rnds in St st. When work measures approx. 4 cm/1.6 in, work in patt C as charted, and after that in St st with dark grey yarn until work measures approx. 44 cm/17.3 in.

Finishing: Divide work on 2 needles, and join top seam. Sew a zipper to cast-on edge.

Weave in all ends on WS.

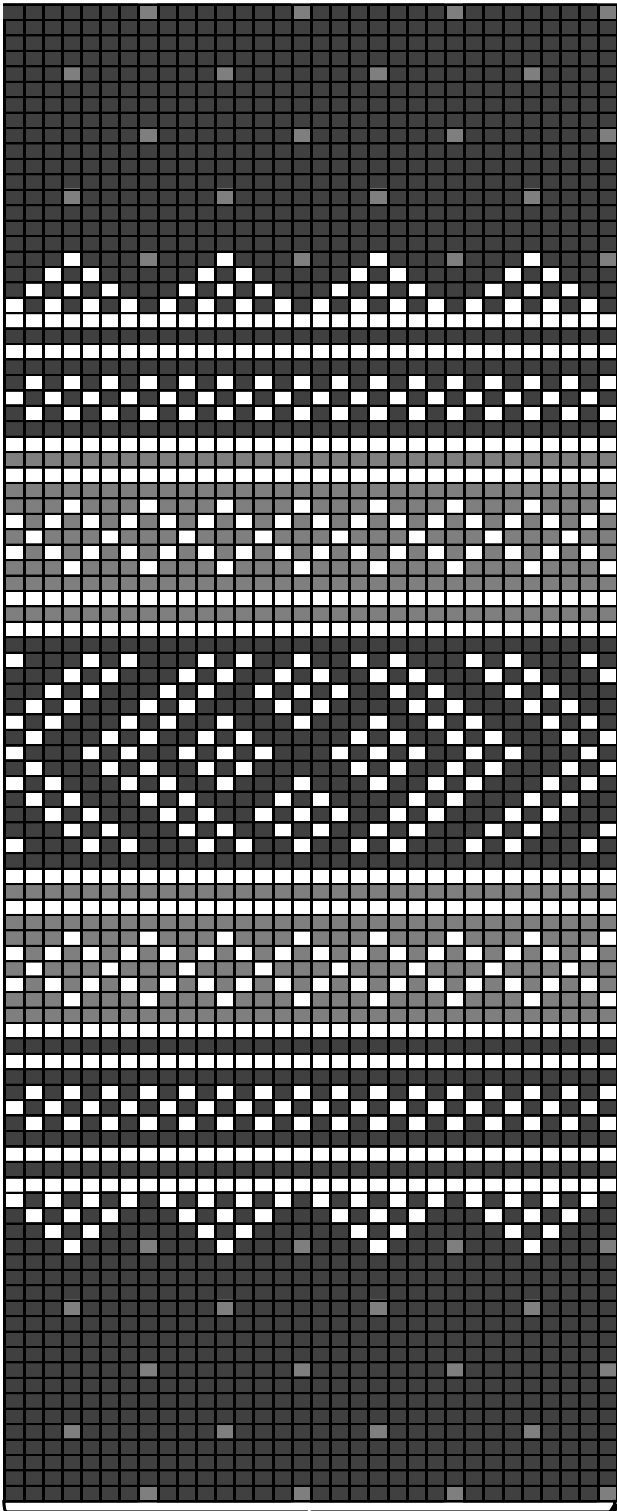
Pattern B



- = knit
- ◡ = purl
- = Slip 2 sts on cn, hold to front, K2, knit sts from cn

Begin here

Pattern C



Repeat

Begin here

☐ = Grey

■ = Dark Grey

□ = White

Viking Superwash

Leggings

1213-27

Size	34	36	38	40	42	44
Hips	83	90	97	104	111	118 cm
	32.7	35.4	38.2	41	43.7	46.5 in
Leg length	76	78	80	80	82	82 cm
	29.9	30.7	31.5	31.5	32.3	32.3 in

ALTERNATIVE YARN: Viking Superwash (100% wool, superwash), Viking Alpaca Sport (30% alpaca, 40% wool, 30% nylon), Viking Sportsragg (60% wool, 20% nylon, 20% acrylic), Viking Sportsgarn (100% wool), 50 g ball

White, 100 5 5 5 6 6 7 balls
 Dark Grey, 117 10 10 11 11 12 12 balls

Circular needle and double pointed needles size 3 and 3½ mm – US 2 or 3 and 4 – UK/Canadian 11 and 10 or 9 + elastic, and 2 buttons

Gauge: 23 sts = approx. 10 cm/4 in over St st using needles size 3½ mm. **Check your gauge to ensure success.**

Beg from waist.

Using needles size 3mm and white yarn, cast on 192 – 208 – 224 – 240 – 256 – 272 sts. Work back and forth in patt I. When work measures 4 cm/1.6 in, make one buttonhole at right edge inside 4 sts. Buttonhole: Bind off 4 sts. Next row: cast on 4 sts over bound-off sts. Make another buttonhole after 8 – 8 – 9 – 9 – 9 – 9 cm/3.1-3.1-3.5-3.5-3.5-3.5 in. When work measures approx. 12 – 12 – 13 – 13 – 14 – 14 cm/4.7-4.7-5.1-5.1-5.5-5.5 in (end with a complete square). Slip 12 first and last sts on holder. Change to needles size 3½ mm. Place 12 buttonhole sts over 12 sts on other holder, and knit these sts tog, 1 st from each needle (= 12 sts on a needle. 7th st = mid front st). Cont working in rnds, and inc evenly across rem sts number of sts to be 192 – 208 – 224 – 240 – 256 – 272 sts. Place markers each side 97 – 105 – 113 – 121 – 129 – 137 sts for front, and 95 – 103 – 111 – 119 – 127 – 135 sts for back. Place markers rnd mid front and back sts.

Beg from mid back st. Knit 16 – 18 – 18 – 20 – 22 – 22 sts, turn, purl 33 – 37 – 37 – 41 – 45 – 45 sts, turn, work 16 – 17 – 19 – 20 – 21 – 23 sts more each time until you reach both side markers.

Knit 1 rnd over all sts. You have now reached left side marker.

Work in patt II. When work measures 20 – 20 – 21 – 21 – 22 – 22 cm/7.9-7.9-8.3-8.3-8.7-8.7 in (measured mid front), inc 1 st both sides of mid front and back markers every 2nd rnd altog. 8 – 8 – 9 – 9 – 10 – 10 times.

Work each leg separately (leg length is measured from here).

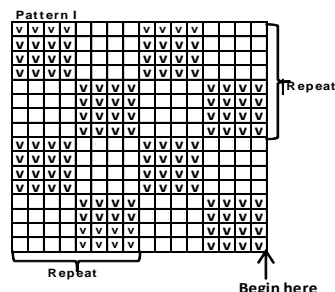
Work sts from front mid st until back mid st using an extra circular needle = 112 – 120 – 130 – 138 – 148 – 156 sts for each leg. Cont working in rnds in patt II, **but** dec 2 sts at inner seam of the leg approx. every 4 – 3 ½ - 3 – 2 ½ - 2 ½ - 2 ½ cm/1.6-1.4-1.2-1-1-1 in. When patt II is ready, cont working in St st with dark grey yarn until 74 – 76 – 78 – 80 – 80 – 82 sts rem, and leg measures approx. 70 – 72 – 74 – 74 – 76 – 76 cm/27.6-28.3-29.1-29.1-29.9-29.9 in (patt should be ready by now). Change to

needles size 3 mm, and purl 1 rnd (= folding edge), and after that 4 cm/1.6 in St st. Bind off rather loosely. Fold edge in double, and sew on WS.

Work same for the other leg over rem sts.

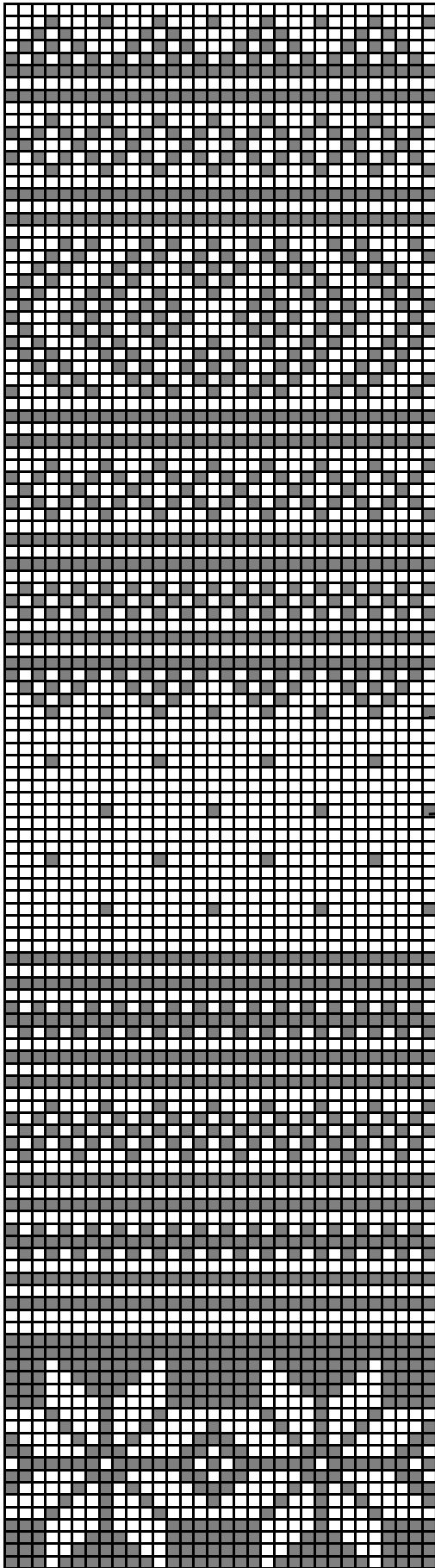
Finishing:

Sew elastic on waist, over changing from patt I. Weave in all ends on WS.



- = purl on RS, knit on WS
- = knit on RS, purl on WS

Pattern II



Rep until lea measures

approx. 47 - 49 - 51 - 51 - 53 - 53 cm
18.5 - 19.3 - 20.1 - 20.1 - 20.9 - 20.9 in
(end with 3 rnds with dark grey varn)

■ = white

□ = dark grey

Begin here, waist

Viking Superwash

1213-28

Socks, hat, scarf and gloves

Size	37/39	40/42	44/46
Foot length, approx.	20	22	24 cm
	7.9	8.7	9.4 in

ALTERNATIVE YARN: Viking Superwash (100% wool, superwash), Viking Alpaca Sport (30% alpaca, 40% merino wool, 30% nylon), Viking Sportsragg (60% wool, 20% nylon, 20% acrylic), Viking Sportsgarn (100% wool), 50 g ball

SOCKS

Black, 103	2	2	2 ball
Grey, 115	1	1	1 ball

GREY HAT

Grey, 115 3 balls

BLACK HAT

Black, 103 2 balls

SCARF

Grey, 115 7 balls

GLOVES

Grey, 115 2 balls

Black, 103 2 balls

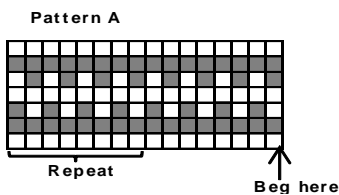
Circular needle and double pointed needles size 3 and 3½ mm – US 2 or 3 and 4 – UK/Canadian 11 and 10 or 9

Gauge: 23 sts = approx. 10 cm/4 in over St st using needles size 3½ mm. **Check your gauge to ensure success.**

SOCKS

Using needles size 3 mm and black yarn, cast on 48 – 52 – 56 sts. Work 10 – 11 – 12 cm/4-4.3-4.7 in in K1,P1 rib. Change to needles size 3½ mm, and work in patt A as charted. Slip 23 – 25 – 27 sts on holder. Work back and forth in patt B over rem 25 – 27 – 29 sts. Purl 1 row with darkest clr over all sts. Knit 17 – 19 – 20 sts, turn, slip first st, and purl 9 – 11 – 11 sts, turn, slip first st, and work 1 st more each time until 2 sts rem at both sides. Turn, and knit 1 row. You have now reached left edge of the heel. Knit up 13 – 15 – 16 sts in patt D along left edge of the heel, work patt C over 23 – 25 – 27 sts on holder, and knit up 13 – 15 – 16 sts in patt D along right edge of the heel. Cont working in rnds in patt D over sole sts and both sides of the heel, and in patt C on top of the foot, **and** dec 1 st both sides of patt C every rnd until 48 – 52 – 56 sts rem. When foot measures approx. 20 – 22 – 24 cm/7.9-8.7-9.4 in (or desired length before dec). End with a complete or half patt C. Or you can work in patt A until work measures desired length.

Dec: Place markers around sts on both sides patt C. Work with black yarn, dec1 st both sides of markers every 2nd rnd 2 times, and after that every rnd until 12 sts rem. Break yarn, thread through rem sts, pull tightly, and weave in on WS. .



Repeat

□ = black

■ = grey

Chart for heel over 29 , 27 , and 25 sts

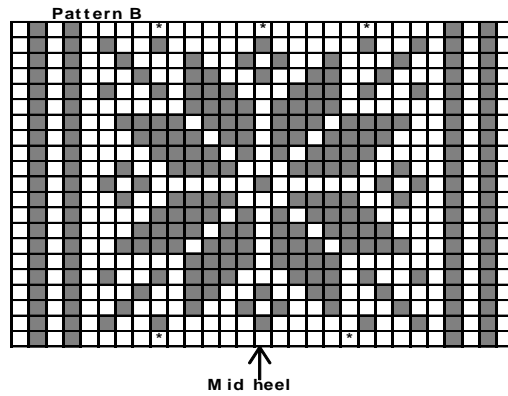
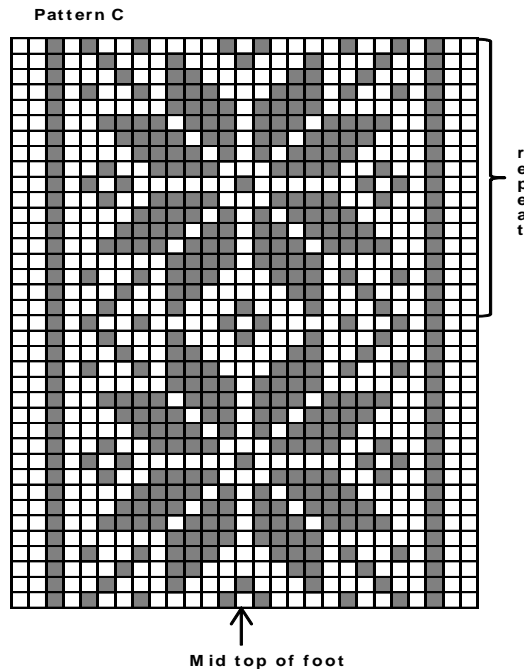
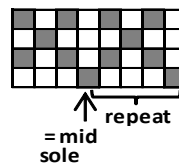


Chart for 27 , 25 and 23 sts



Pattern D



GREY HAT

Using needles size 3 mm, cast on 120 sts. Work 7 cm/2.8 in in K3,P1 rib. Change to needles size 3½ mm. Knit 1 rnd, and inc 1 st to each knit-stripe. Cont working in K4,P1 rib until work measures approx. 26 cm/10.2 in. Beg dec: *K3, K2tog*, rep *-* across the rnd. Work 3 rnds in St st. Rep dec with 1 st less between dec every 3rd rnd 2 times, and then on every 2nd rnd until 15 sts rem. Break yarn, and thread through rem sts. Weave in all ends on WS.

BLACK HAT

Using needles size 3 mm, cast on 130 sts. Work back and forth 16 rows in Garter st. Change to needles size 3½ mm. Cont

working in rnds in St st. When work measures approx. 8 cm/3.1 in, beg dec: *K24, K2tog*, rep *-* across the rnd. Work 4 rnds. Rep dec with 1 st less between each dec every 5th rnd 4 times. Work now as foll: *K9, K2tog*, rep *-* across the rnd. Work 4 rnds. Rep dec with 1 st less between dec every 5th rnd 3 times. Rep dec every 4th rnd 1 time, every 3rd rnd 1 time, and every 2nd rnd 1 time. Next rnd: *K3, K2tog, rep *-* across the rnd. Next rnd: Knit all sts tog in pairs. Rep dec one more time. Break yarn, thread through rem sts, pull tightly, and weave in on WS. Sew Garter st edge seam, and weave in all ends on WS.

SCARF

Using needles size 3½ mm, cast on 68 sts. Work back and forth in K3,P2 rib until you have finished all 7 balls. Bind off in rib.

GLOVES

Double pointed needles size 3 and 3½ mm – US 2 or 3 and 4 – UK/Canadian 11 and 10 or 9

GLOVES

Using needles size 3 mm and black yarn, cast on 52 sts. Work 7 cm/2.8 in in K1,P1 rib.

Change to needles size 3½ mm. Work in patt as charted, and inc evenly across 1st rnd number of sts to be 56 sts. Inc for thumb gusset as charted. Slip 11 gusset sts on holder as charted. Cast on 7 sts over gusset sts = 60 sts. Cont working as charted.

Index finger: Slip sts on 4 dpn, and cast on 4 sts between index and middle finger. Work as charted.

Middle finger: Slip sts on 4 dpn, pick up 3 sts from index finger, and cast on 3 sts between middle and ring finger. Work as charted.

Ring finger: Slip sts on 4 dpn, pick up 3 sts from middle finger, and cast on 4 sts between ring and little finger. Work as charted.

Little finger: Slip sts on 4 dpn, pick up 4 sts from ring finger. Work as charted.

Thumb: Slip gusset sts on a needle. Pick up 11 sts from upper edge of thumb opening + 2 sts from each side. Work in patt as charted for thumb (Note! Don't forget last inc for thumb gusset (= 26 sts).

