

Viking Superwash

Capelet and hat

1212-1

Size 2-4 6-10 yrs

ALTERNATIVE YARN: Viking Superwash(100% wool, superwash), Viking Alpaca Sport (30% alpaca, 40% merino wool, 30% nylon), Viking Sportsragg (60% wool, 20% nylon, 20% acrylic), Viking Sportsgarn (100% wool), 50 g ball

CAPELET AND HAT

Navy Blue, 126 1 2 balls
 Wine, 162 1 1 ball
 Pink, 164 1 1 ball
 Neon Pink, 175 1 1 ball

Circular needle and double pointed needles size 3 and 3½ mm – US 2 or 3 and 4 – UK/Canadian 11 and 10 or

Crochet hook size 3 mm – US C/2 or D/3 – UK/Canadian 11

Gauge: 23 sts = approx. 10 cm/4 in over St st using needles size 3 ½mm. **Check your gauge to ensure success.**

When working a patt with 2 clrs, it's important to maintain the order of yarns on your finger. Always hold the darker clr in front throughout the whole project.

CAPELET

Using needles size 3 mm and navy blue yarn, cast on 79 – 89 sts. Work back and forth 2 cm/0.8 in in K1,P1 rib. Change to needles size 3½ mm. Cont working back and forth in patt I. Put work aside, and knit same for another piece (= front and back). Beg from back. Using navy blue yarn, K79 - 89 (place a marker), cast on 43 – 51 sts (place a marker), K79 – 89 (place a marker), and cast on 43 – 51 sts (place a marker) = 244 – 280 sts on a rnd. Cont working in patt as charted, **and** beg raglan-dec at each 4 markers: Work until 2 sts rem before a marker, K2tog, sl 1 st, K1, pss. Rep dec at all 4 seamlines every 2nd rnd until 84-88 sts rem. Work raglan-dec with basic clr. Change to needles size 3 mm. Knit 1 rnd with navy blue yarn, and after that 5-6 cm/2-2.4 in in K1,P1 rib. Bind off in rib.

Finishing

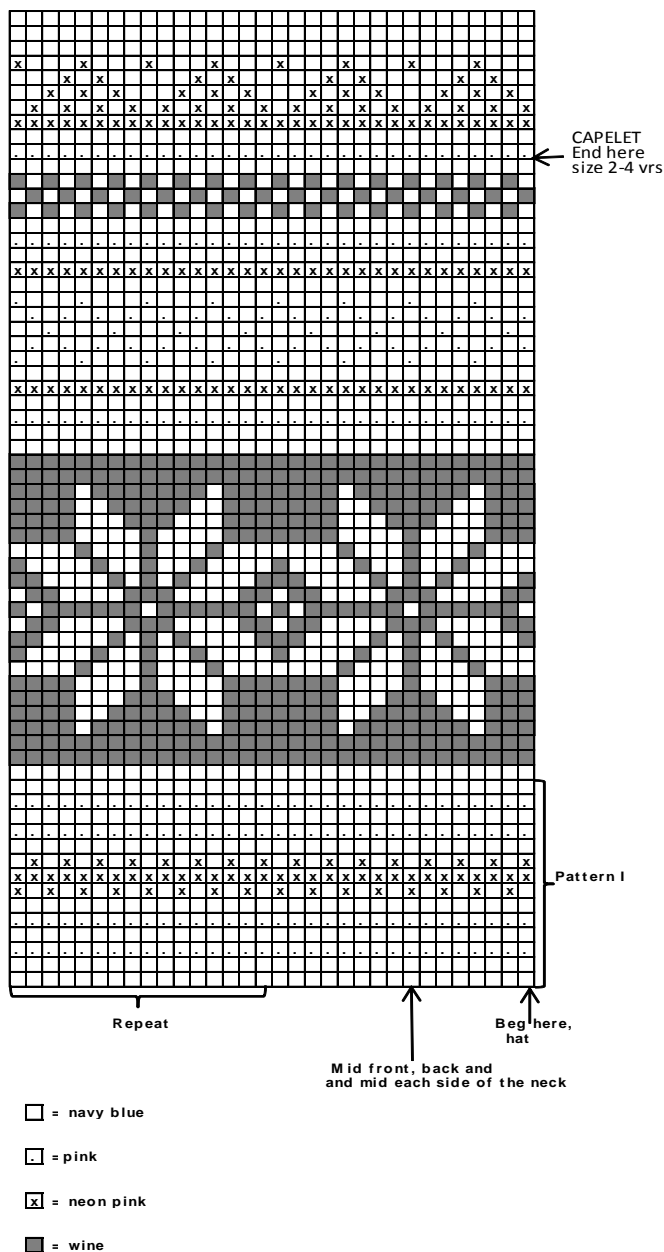
Beg from back. Using crochet hook size 3 mm and navy blue yarn, work sc-rnd over all armhole sts.

Weave in all ends on WS.

HAT

Using needles size 3 mm and navy blue yarn, cast on 84 – 96 sts. Work in rnds 5-6 cm/2-2.4 in in K1,P1 rib. Change to needles size 3½ mm. Work in patt as charted, and inc. evenly across 1st rnd number of sts to be 112 – 128 sts. When work measures approx. 19 – 21 cm/7.5-8.3 in, beg crown dec. Knit all sts tog in pairs. Work 2 rnds without dec. Rep dec. Work 1 rnd without dec. Rep dec until 14 – 16 sts rem. Break yarn, thread through rem sts, pull tightly, and weave in on WS.

Make a pompon using wine clr yarn, and fasten on top.



Viking Superwash

Socks, hat and scarf

1212-2

Size	2/4	6	8	10
Yrs				
Shoe size	24-27	28-31	32-35	36-39

ALTERNATIVE YARN: Viking Superwash (100 % wool, superwash), Viking Alpaca Sport (30 % alpaca, 40%merino wool, 30 % nylon), Viking Sportsragg (60% wool, 20% nylon, 20% acrylic), Viking Sportsgarn (100 % wool), 50 g ball

HAT

	(size: 4	6/10 yrs)
Blue, 124	1	1 ball
Turquoise, 129	1	1 ball
Neon Green, 135	1	1 ball

SOCKS: Size

	24/27	28/31	32/35	36/39
Neon Green, 135	2	2	2	3 balls
Black, 103	1	1	1	1 ball

SCARF

Neon Green, 135	5	6 balls
-----------------	---	---------

Circular needles and double pointed needles size 3 and 3½ mm – US 2 or 3 and 4 – UK/Canadian 11 and 10 or 9
Crochet hook size 3 mm – US C/2 or D/3 – UK/Canadian 11

Gauge: 23 sts = approx. 10 cm/4 in over St st using needles size 3½ mm. **Check your gauge to ensure success.**

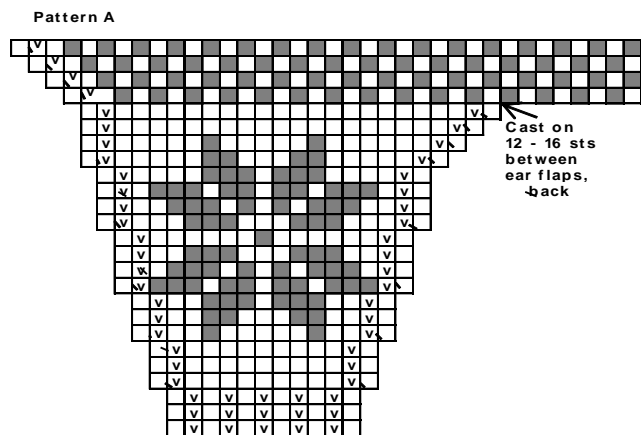
When working a patt with 2 clrs, it's important to maintain the order of yarns on your finger. Always hold the darker clr in front throughout the whole project.

HAT (size: 4 and 6/10 yrs)

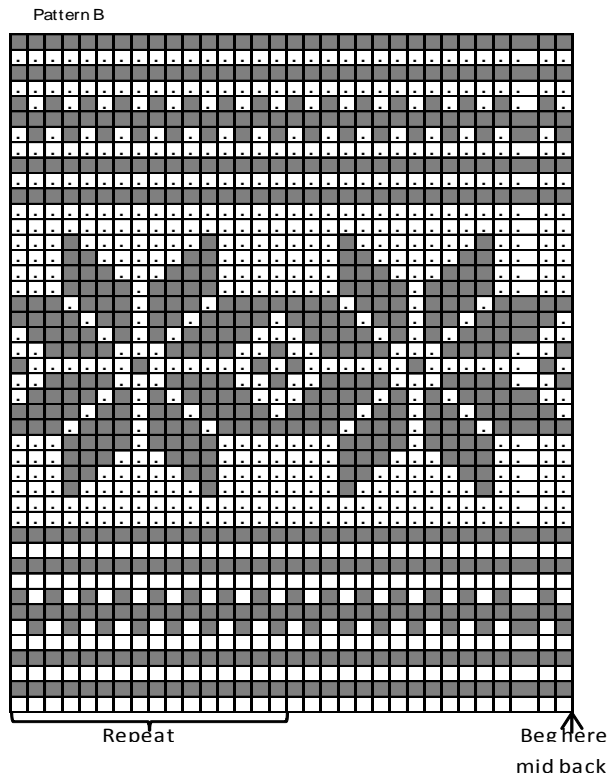
Beg from one ear flap: Using needles size 3½ mm and blue yarn, cast on 11 sts. Work in patt A and inc as charted. Twist yarns before p-sts at each side. Leave work aside, and work same for the other ear flap, rev inc.

Slip both ear flaps on same needle, and cast on with blue yarn 12 – 16 sts between ear flaps = back. Cont working back and forth in patt, and keep inc as charted.

Using blue yarn, cast on 28 – 40 sts to the end of the row = front. Cont working in rnds. There is now 96 – 112 sts on a rnd. Work patt B, and after that cont working with turquoise yarn. When work measures 15 – 17 cm/5.9-6.7 in (measured mid front), beg crown dec: *K6, K2tog*, rep *-* across the rnd. Work 2 rnds without dec. Rep dec every 3rd rnd, with 1 st less between each dec until 12 – 14 sts rem. Break yarn, thread through rem sts, pull tightly, and weave in on WS. Crochet 1 sc-rnd across the lower edge using crochet hook size 3 mm and blue yarn.



- = Blue
- = Neon Green
- ◻ = Purl on RS, knit on WS
- ◻ = Inc here
- ◻ = Turquoise



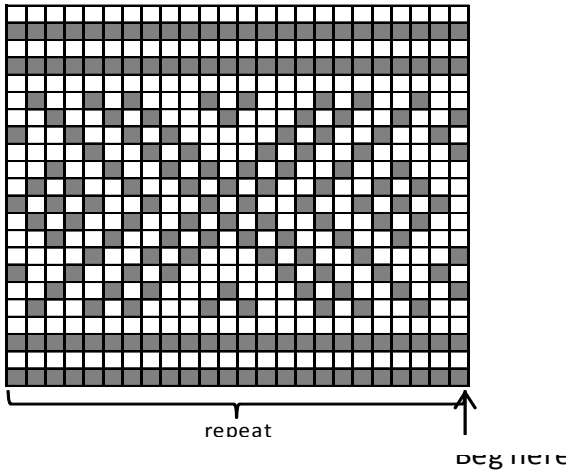
SOCKS (size: 24/27 28/31 32/35 36/39)

Using needles size 3 mm and neon green yarn, cast on 42-46-50-54 sts. Work 4 rnds in K1tbl,P1 rib. Change to needles size 3½ mm. Knit 1 rnd, and adjust evenly across number of sts to be 48 sts (same for all sizes). Work in patt for socks as charted. When patt is ready, cont working with neon green, knit 1 rnd, purl 1 rnd. Turn work inside out. Knit 1 rnd, and dec evenly across number of sts to be 36-40-44-48 sts. Cont working 9-10-10-11 cm/3.5-4-4-4.3 in in K1,P1 rib. Work 3-5-7-9 rnds in St st.

Work for heel with black yarn over 18-20-22-24 mid back sts: Work back and forth 18-20-22-24 rows in St st. Next RS row: Knit until 7-7-8-9 sts rem, sl 1 st, K1, pssso. Turn, purl until 7-7-8-9 sts rem, P2tog. Turn, knit until 6-6-7-8 sts rem, sl 1st, K1, pssso. Turn, purl until 6-6-7-8 sts rem, P2tog. Turn, and cont working in the same way with 1 st less for each turning, until 6-8-8-8 sts rem. Change to neon green yarn, and pick up 9-10-11-12 sts from each side of the heel (knit these sts tbl on first rnd), + knit 18-20-22-24 sts on top of the foot = 42-48-52-56 sts. Cont working in rnds in St st with neon green yarn, and dec 1 st both sides of the heel every 2nd rnd until 36-40-44-48 sts rem. Cont working in St st until foot measures approx. 12-14-16-18 cm/4.7-5.5-6.3-7.1 in (measured from the heel), or approx. 3 cm/1.2 in less than the desired length. Place markers each side, 18-20-22-24 sts for both sides. Beg dec: Work until 2 sts rem before a marker, K2tog, K2togtbl. Rep dec every rnd at each marker until 8 sts rem (all sts). Break yarn, thread through rem sts, pull tightly, and weave in on WS.

Work same for the other sock.
Weave in all ends on WS.
Fold patt border on RS.

PATTERN FOR SOCKS



□ = black
 ■ = neon green

SCARF (size 2/4 and 6/10 yrs)

Using needles size 3½ mm and neon green yarn, cast on 36 sts. Cont working back and forth in patent patt as foll:

Patent patt

1st row: Sl 1 st = selvage st, *K1, sl next st tbl with yarn forward (= as a purl st)*, rep *-*, end with 1 selvage st

2nd row: Sl1, *knit yo and sl-st tog, sl next st tbl with yarn on RS*, rep *-*, end with 1 selvage st

Rep 2nd row throughout the work

Cont working until scarf measures 140-150 cm/55.1-59.1 in, or desired length. Bind off in rib.

Tie approx. 10 cm/4 in long fringes along short edges with 4-doubled yarn to each knit-st in patent pattern.

SCARF

Using needles size 3½ mm and orange clr yarn, cast on 96 sts. Work in patt as charted, rep 4 times, scarf measures approx. 160 cm/63 in. End with 12 rows with orange clr yarn. Bind off. Tie approx. 11, approx. 12 cm/ 4.7in long, 4-doubled orange fringes to the bound-off edge.

HAT

Using needles size 3 mm and pink yarn, cast on 96 sts. Work in rnds 6 cm/2.4 in in K1,P1 rib. Change to needles size 3½ mm, and work in patt as charted. When work measures approx. 25 cm/9.8 in, beg dec. Knit all sts tog in pairs. Work 2 rnds. Next rnd: *K1, K2tog*, rep *-* across the rnd. Work 2 rnds. Next rnd: Knit all sts tog in pairs. Break yarn, thread through rem sts, pull tightly, and weave in on WS. Make an orange pompon, and fasten on top.

LEGWARMERS

Using needles size 3, cast on 44 – 48 sts. Work in rnds K2,P2 rib. When work measures 6 – 8 cm/2.4-3.1 in, change to needles size 3½ mm, and cont working in rib. When work measures 16 – 14 cm/6.3-5.5 in, inc 1 st to each knit-stripe. Cont working in K3,P2 rib until work measures 31 – 28 cm/12.2-11 in. Inc 1 st to each purl-stripe. Cont working in K3,P3 rib until work measures 46 – 42 cm/18.1-16.5 in.

Size 6-8 yrs: Change to needles size 3 mm, and work in K1,P1 rib until work measures approx. 50 cm/19.7 in. Bind off in rib.

Size 10-12 yrs: Inc 1 st to each knit-stripe, and cont working in K4,P3 until work measures 56 cm/22 in. Change to needles size 3 mm, and cont working in K1,P1 rib until work measures approx. 60 cm/23.6 in. Bind off in rib. Work same for the other leg warmer.

Viking Superwash

Scarf, hat and legwarmers 1212-3

Size	6/10 yrs
Length, scarf:	21 x 160 cm
	8.3 x 63 in

ALTERNATIVE YARN: Viking Superwash(100% wool, superwash), Viking Alpaca Sport (30% alpaca, 40% merino wool, 30% nylon), Viking Sportsragg (60% wool, 20% nylon, 20% acrylic), Viking Sportsgarn (100% wool), 50 g ball

SCARF AND HAT

Orange, 151	7 balls
Yellow, 145	3 balls
Pink, 164	3 balls

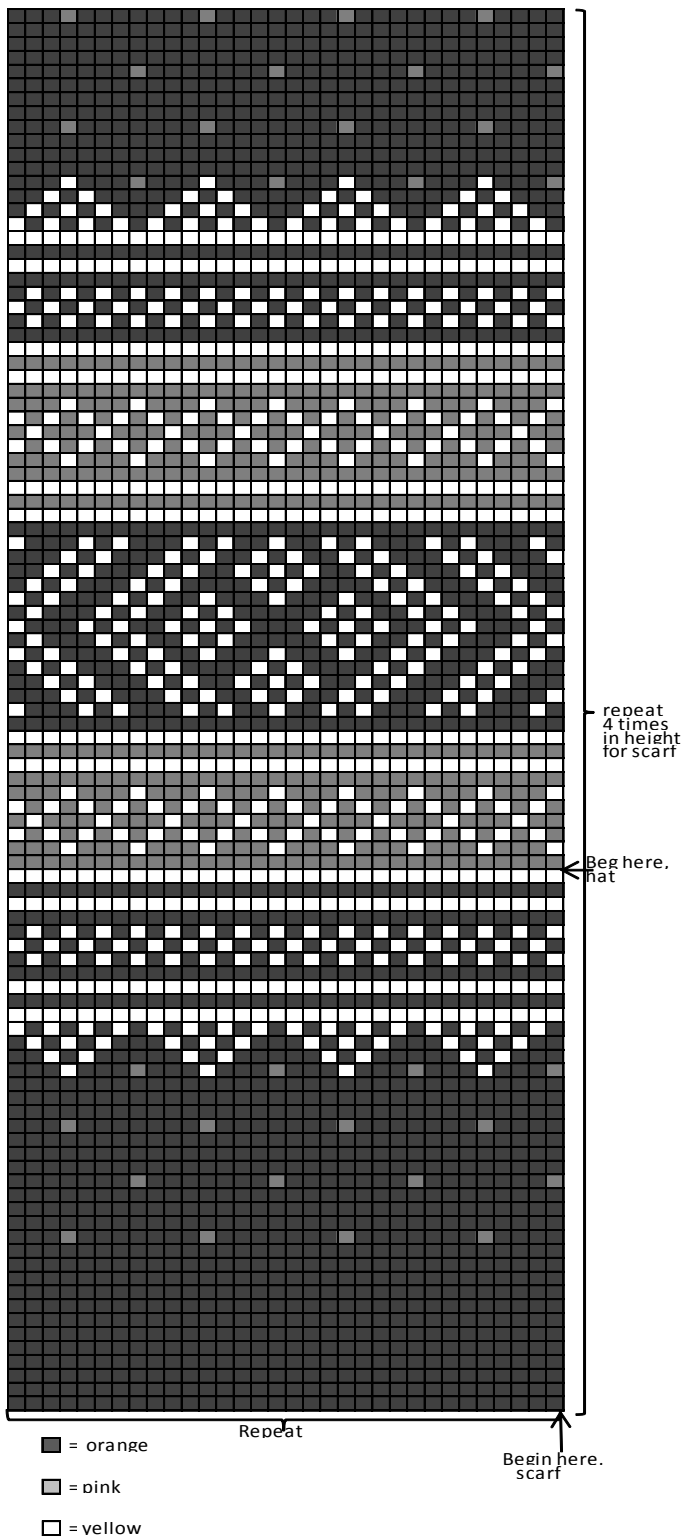
LEGWARMERS size:	4	6/10 yrs
Wine, 162	3	5 balls

Circular needles and double pointed needles size 3 and 3½ mm – US 2 or 3 and 11 – UK/Canadian 11 and 10 or 9

Gauge: 23 sts = approx. 10 cm/4 in over St st using needles size 3½ mm. **Check your gauge to ensure success.**

When working a patt with 2 clrs, it's important to maintain the order of yarns on your finger. Always hold the darker clr in front throughout the whole project.

PATTERN FOR SCARF AND HAT



HAT

Neon Green, 135 1 2 balls

Circular needles and double pointed needles size 3 and 3½ mm – US 2 or 3 and 4 – UK/Canadian 11 and 10 or 9

Gauge: 23 sts = approx. 10 cm/4 in over St st using needles size 3½ mm. **Check your gauge to ensure success.**

When working in patt with 2 clr, it's important to maintain the order of yarns on your finger. Always hold the darker clr in front throughout the whole project.

NECKLET

Using needles size 3 mm and blue yarn, cast on 192 – 224 sts. Work 6 rnds in K1,P1 rib. Change to needles size 3½ mm. Work in St st, and divide work into 4 pieces as foll: 65 - 73 sts (place a marker), 31 – 39 sts (place a marker), 65 – 73 sts (place a marker) and end with 31 – 39 sts (place a marker). Cont working in rnds, **and** beg raglan-dec: K2tog before a marker, sl 1 st, K1, pss. Rep dec every 2nd rnd at each marker until 88-88 sts rem, and patt is ready. Work first 2-8 rnds with raglan-dec in St st, and after that work in patt A as charted (work raglan-dec always with basic clr). Change to needles size 3 mm. Work 1 rnd with turquoise yarn, and after that 12 cm/4.7 in in K1,P1 rib. Bind off in rib. Weave in all ends on WS.

HAT

Using needles size 3½ mm, cast on 76 – 84 sts. Work in K2,P2 rib. When work measures 24–27 cm/9.4-10.6 in, beg crown dec. Knit all knit-sts and purl-sts tog in pairs. Work 2 rnds without dec. Next rnd: Knit all sts tog in pairs. Work 1 rnd without dec. Rep dec. Break yarn, thread through rem sts, pull slightly, and weave in on WS.

Viking Superwash

Necklet and hat 1212-4

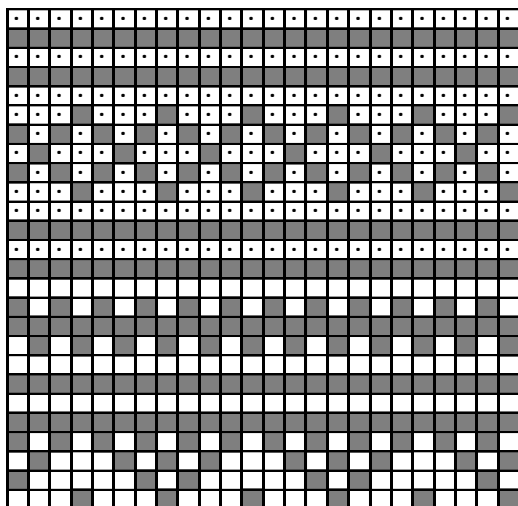
Size 2-4 6-10 yrs

ALTERNATIVE YARN: Viking Superwash(100% wool, superwash), Viking Alpaca Sport (30% alpaca, 40% merino wool, 30% nylon), Viking Sportsragg (60% wool, 20% nylon, 20% acrylic), Viking Sportsgarn (100% wool), 50 g ball

NECKLET

Blue, 124	1	1 ball
Neon Green, 135	1	1 ball
Turquoise, 129	1	2 balls

PATTERN A



↑
Mid, each piece

- = Blue
- = Neon Green
- = Turquoise

Viking Superwash

Hat

1212-5

Size	2/4	6	8	10 yrs
Circumference, approx.	43	45	47	49 cm
	16.9	17.7	18.5	19.3 in

ALTERNATIVE YARN: Viking Superwash (100 % wool, superwash), Viking Alpaca Sport (30 % alpaca, 40%merino wool, 30 % nylon), Viking Sportsragg (60% wool, 20% nylon, 20% acrylic), Viking Sportsgarn (100 % wool), 50 g balls

HAT

Neon Pink, 175	2	2	2	2 balls
Black, 103	1	1	1	1 ball

SCARF

	2/4	6/10 yrs
Neon Pink, 175	5	6 balls

Circular needle and double pointed needles size 3 and 3½ mm – US 2 or 3 and 4 – UK/Canadian 11 and 10 or Crochet hook size 3 mm – US C/2 or D/3 – UK/Canadian 11

Gauge: 23 sts = approx. 10 cm/4 in over St st using needles size 3½ mm. **Check your gauge to ensure success.**

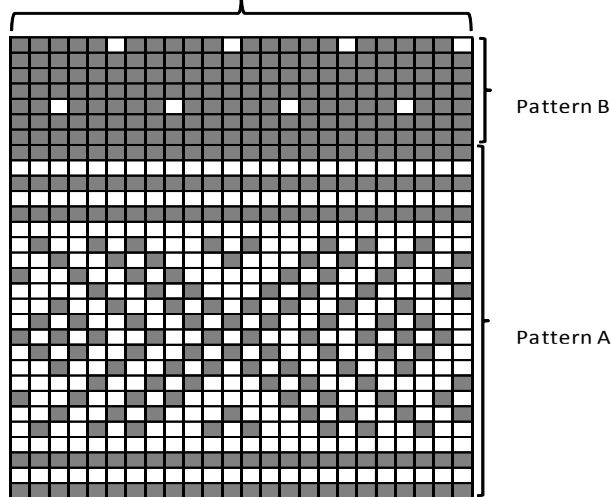
HAT

Using needles size 3 mm and black yarn, cast on 100-104-108-112 sts. Purl 1 rnd. Place markers each side, 51-53-55-57 sts for front, and 49-51-53-55 sts for back. Work in patt A as charted for hat, beg as shown for front and back, **BUT work first and last st always with neon pink.**

When patt A is ready, change to pink yarn. Purl 1 rnd (= folding edge). Turn work inside out. Knit 1 rnd, and cont working in K1,P1 rib. When rib measures approx. 8 cm/3.1 in, cont working in St st and patt B. When work measures approx. 19-21-23-25

cm/7.5-8.3-9.1-9.8 in measured from folding edge, purl 1 rnd. Cont working back and forth 2 cm/ in in St st. Bind off. Fold the upper edge in double, and sew on WS. Twist a cord, approx. 1½ m/59.1 IN long with double yarn, and thread through the casing top of the hat, and tighten the cord. Make two pompons, 1 with black and 1 with neon pink yarn, diameter approx. 5 cm/2 in. Fasten 1 to each end of the cord. Weave in all ends on WS. Fold patt edge in double on RS. Crochet sc-rnd to the cast-on edge, using crochet hook size 3 mm and neon pink.

Pattern for hat repeat



↑↑↑
beg here size 10 yrs
beg here size 8 yrs
beg here size 6 yrs
beg here size 2/4 yrs

Both front and back

- = black
- = neon pink

SCARF (size 2/4 and 6/10 yrs)

Using needles size 3½ mm and neon pink, cast on 36 sts. Cont working back and forth in patent patt:

Patent pattern

1st row: S11 = selvage st, *K1, sl next st from tbl with yarn forward (as a purl-st)*, rep *-*, and end with 1 selvage st.

2nd row: S11, *knit yo and sl-st tog, sl next st tbl with yarn on RS*, rep *-*, end with 1 selvage st

Rep 2nd row throughout the work

Work until scarf measures 140-150 cm/ 55.1-59.1 in, or desired length. Bind off in rib.

Tie approx. 10 cm/4 in long fringes to short edges with 4-double yarn to each knit-st patent patt.

Viking Superwash 1212-6 Headband, knee length socks, scarf and mittens

Size	2/4	6	8	10 yrs
Shoe size	24-27	28-31	32-35	36-39

ALTERNATIVE YARN: Viking Superwash (100 % wool, superwash), Viking Alpaca Sport (30 % alpaca, 40%merino wool, 30 % nylon), Viking Sportsragg (60% wool, 20% nylon, 20% acrylic), Viking Sportsgarn (100% wool), 50 g ball

HEADBAND (Circumference: 42 47 52 cm)			
	16.5	18.5	20.5 in)
Black, 103	1	1	1 ball
Neon Pink, 175	1	1	1 ball

KNEE LENGTH SOCKS

Black, 103	1	1	1	2 balls
Neon Pink, 175	2	3	3	4 balls

SCARF (size 2/4 and 6/10 yrs)

Neon Pink, 175	5	6 balls
----------------	---	---------

MITTENS

	2/4	6/8	10/12 yrs
Neon Pink, 175	1	2	2 balls
Black, 103	1	1	1 ball

Circular needle and double pointed needles size 3 and 3½ mm – US 2 or 3 and 4 – UK/Canadian 11 and 10 or 9

Gauge: 23 sts = approx. 10 cm/4 in over St st using needles size 3½ mm. **Check your gauge to ensure success.**

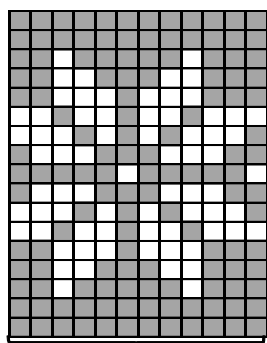
HEADBAND (42 – 47 – 52 cm/16.5-18.5-20.5 in)

Using needles size 3½ mm and black yarn, cast on 96-108-120 sts. Work 11 rnds in St st. Purl 1 rnd = folding edge. Cont working in St st, 2 rnds with black and 1 rnd with neon pink yarn. Work patt I as charted. Work 1 rnd with neon pink yarn. Change to black yarn, and knit 2 rnds, purl 1 rnd (= folding edge), and 11 rnds in St st. Bind off.

Weave in all ends on WS. Fold black edges on WS, and sew along edges.

Dampen headband slightly with a wet cloth.

Pattern I



Repeat

■ = black
□ = neon pink

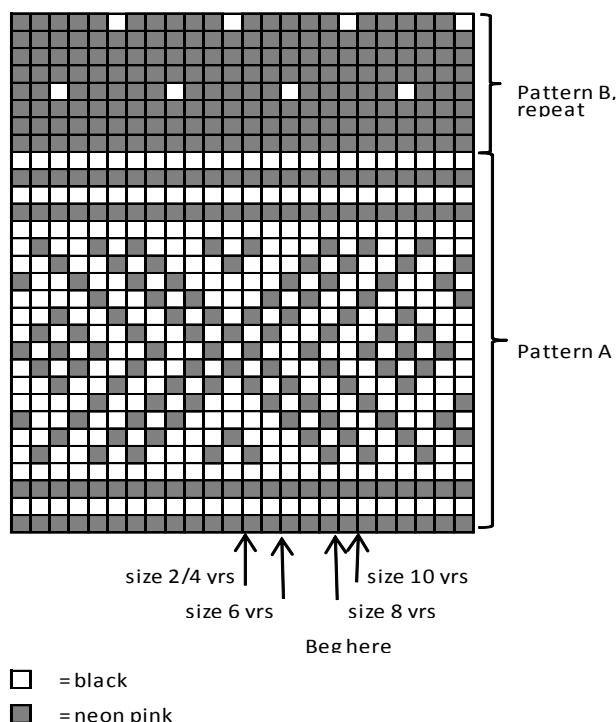
KNEELENGTH SOCKS

Using needles size 3 mm and black yarn, cast on 46-52-58-60 sts. Work in rnds 4-5-5-6 cm/1.6-2-2-2.4 in in K1tbl,P1 rib. Change to needles size 3½ mm. Place a marker beg of the rnd = mid back of the sock. Knit 1 rnd, and adjust evenly across number of sts to be 49-53-59-61 sts.

Work in St st and patt A, beg as charted and rep in rnds. Cont working in patt B as charted, **but** when work measures 10-10-14-20 cm/4-4-5.5-7.9 in, **dec** as foll: Dec 1 st both sides of the marker approx. every 3-3-3½-4 cm/1.2-1.2-1.4-1.6 in until 37-41-45-49 sts rem. Cont working in rnds in St st and patt B until work measures approx. 25-28-35-38 cm/9.8-11-13.8-15 in (or desired length before heel). Work heel with black yarn over mid

back 18-20-22-24 sts: Work back and forth 18-20-22-24 rows in St st, knit 1 row until 7-7-8-9 sts rem, sl 1 st, K1, pssso. Turn, purl until 7-7-8-9 sts rem, P2tog. Turn, and knit until 6-6-7-8 sts rem, sl 1 st, K1, pssso. Turn, and purl until 6-6-7-8 sts rem, P2tog. Turn, and cont working in the same way, with 1 st less each time until 6-8-8-8 mid sts rem. Pick or knit up with neon pink yarn 9-10-11-12 sts along both sides of the heel (knit tbl on next rnd), + 19-21-23-25 sts on top of the foot = 43-49-53-57 sts. Cont working in rnds in St st with neon pink yarn, and dec 1 st on each side of the heel every 2nd rnd until 37-41-45-49 sts rem. Work in St st until foot measures approx. 12-14-16-18 cm/4.7-5.5-6.3-7.1 in (measured from heel), or approx 3 cm/ in less than desired length. Place markers each side, 18-20-22-24 sts for sole and 19-21-23-25 sts for top part. Beg dec: Work until 2 sts rem before a marker, K2tog, K2togtbl. Rep dec at each side every rnd until 9 sts rem (all sizes). Break yarn, thread through rem sts, pull tightly, and weave in on WS. Work same for the other sock. Weave in all ends on WS.

PATTERN, KNEELENGTH SOCKS



MITTENS

Size 2/4 6/8 10/12 yrs

Using needles size 3 mm and black yarn, cast on 32-36-40 sts. Work in rnds in K1,P1 rib. When work measures 5-6-7 cm/2-2.4-2.8 in, change to needles size 3½ mm and neon pink yarn. Place markers each side, 16-18-20 sts for each side. Cont working in St st with patt C.

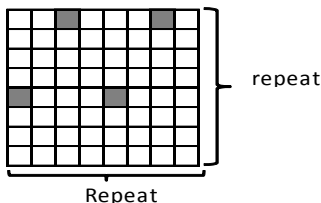
When work measures 2-2-3 cm/0.8-0.8-1.2 in, measured from rib, beg **inc for thumb gusset**: (Note; Gusset is worked with basic clr, rest in patt B): K3, M1, K1, M1, work rem sts in patt B. Cont inc in the same way every 3rd rnd, with 2 more sts between each inc until you have 7-9-9 sts for the gusset. Slip gusset sts on holder, and cast on 5 sts over the gusset sts on next rnd = 36-40-44 sts. Cont working in patt C until work measures 8-10-12 cm/3.1-2-4.7 in, measured from rib (or desired length before dec). Work until 3 sts rem before a

marker, K2togtbl, K1, K2tog. Rep dec every rnd at each side until 8 sts rem. Break yarn, and thread through rem sts.

Thumb: Slip gusset sts from holder on needles size 3½ mm, and pick up with neon pink yarn 5-6-7 sts from cast-on sts, and 1 st from each side = 14-16-18 sts. Work in rnds in St st until thumb measures 8-9-9 cm/ 3.1-3.5-3.5 in (or desired length). Knit all sts tog in pairs until 7-8-9 sts rem. Break yarn, and thread through rem sts.

Work same for the other mitten, with thumb on the opposite side. You can also knit the mitten with contrasting clrs Weave in all ends on WS.

Pattern C



■ = black
□ = neon pink

SCARF (2/4 – 6/10 yrs)

Using needles size 3½ mm and neon pink yarn, cast on 36 sts. Work back and forth in patent patt as foll:

Patent patt

1st row: Sl 1 st = selvage st, *K1, sl 1 st tbl with yarn forward (as a purl st)*, rep *-*, end with 1 selvage st

2nd row: Sl 1 st, *knit yo and sl-st tog, sl next st tbl with yarn on RS*, rep *-*, end with 1 selvage st.

Rep 2nd row throughout the work.

Cont working until scarf measures 140-150 cm/55.1-59.1 in, or desired length. Bind off in rib. Tie approx. 10 cm/4 in long fringes along short edges with 4-doubled yarn to each knit-st in patent patt.

Viking Superwash

Necklet, hat and gloves

1212-7

Size, Necklet 28 x 153 cm

11 x 60.3 in

Size, Hat 2-4 6-10 yrs

Circumference 44 49 cm

17.3 19.3 in

ALTERNATIVE YARN: Viking Superwash (100% wool, superwash), Viking Alpaca Sport (30% alpaca, 40% merino wool, 30% nylon), Viking Sportsragg (60% wool, 20% nylon, 20% acrylic), Viking Sportsgarn (100% wool), 50 g ball

NECKLET

Black, 103	5 balls
Orange, 151	1 ball
Violet, 168	1 ball
Neon Pink, 175	1 ball
Yellow, 145	1 ball
Neon Green, 135	1 ball

HAT AND GLOVES

Black, 103	3 balls
+ rest yarn from scarf	

Circular needle and double pointed needles size 3 and 3½ mm – US 2 or 3 and 4 – UK/Canadian 11 and 10 or 9

Gauge: 23 sts = approx 10 cm/4 in over St st using needles size 3½ mm. **Check your gauge to ensure success.**

When working a patt with 2 clrs, it's important to maintain the order of yarns on your finger. Always hold the darker clr in front throughout the whole project.

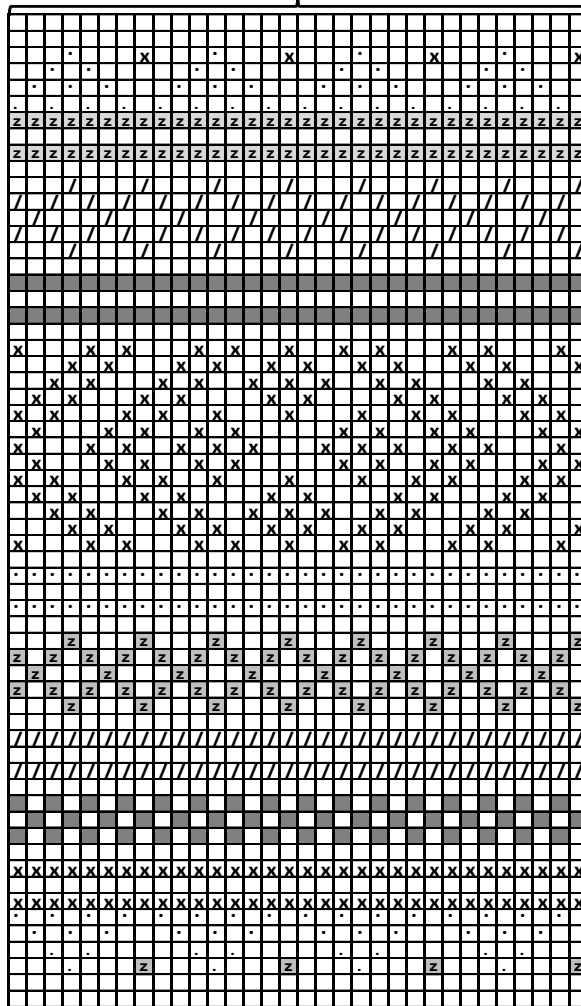
NECKLET

Using needles size 3 mm and black yarn, cast on 352 sts. Work 3 cm/ in in K1,P1 rib. Change to needles size 3½ mm, and work patt I. Change to needles size 3 mm Work 3 cm/1.2 in in K1,P1 rib. Bind off in rib.

HAT

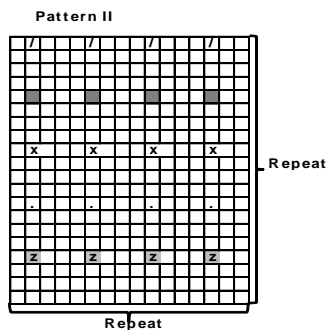
Using needles size 3 mm and black yarn, cast on 96 – 108 sts. Work 5 – 6 cm/2-2.4 in in K1,P1 rib. Change to needles size 3½ mm. Work in patt II, and inc evenly across 1st rnd number of sts to be 100 – 112 sts. When work measures 20 – 22 cm/7.9-8.7 in, beg crown dec: *K2, K2tog*, rep *-* across the rnd. Work 2 rnds. Next rnd *K1, K2tog*, rep *-* across the rnd. Work 1 rnd. Next rnd: Knit all sts tog in pairs. Break yarn, thread through rem sts, pull slightly, and weave in on WS.

Pattern I Repeat



▣ = green □ = violet
■ = yellow ▤ = orange
⊠ = pink □ = black

↑ Beg here



GLOVES

Using needles size 3 and black yarn, cast on 32 – 36 sts. Work 6-7 cm/2.4-2.8 in in K1,P1 rib. Change to needles size 3½ mm.

Work in St st, and inc evenly across 1st rnd number of sts to be 37 – 40 sts. After 3 – 5 rnds beg inc for thumb gusset: K3, M1, K1 (= mid st for gusset), M1, knit rem sts. Cont inc for gusset every 3rd rnd 3 times. Work 2 rnds = 7 sts for gusset. Slip 7 gusset sts on holder, cast on 4-5 sts over the gusset sts = 40 – 44 sts on a rnd. Work 2 – 3 cm/0.8-1.2 in more (measured from thumb opening). Work for fingers:

Index finger: Using orange yarn, knit 5-6 sts from upper side, 5-6 sts from palm side, and cast on 2 sts between index and middle finger = 12-14 sts. Work 14-16 rnds in St st (or desired length). Knit all sts tog in pairs until 6-7 sts rem. Break yarn, thread through rem sts, and weave in on WS.

Middle finger: Using violet yarn, knit 5-6 sts from upper side, 5-6 sts from palm side, cast on 2 sts between index finger and middle finger, and 2 sts between middle finger and ring finger = 14-16 sts. Work 14-16 rnds in St st (or desired length). Dec same as for index finger until 7-8 sts rem. Break yarn, thread through rem sts, and weave in on WS.

Ring finger: Using neon pink yarn, knit 5-5 sts from upper side, 5-5 sts from palm side, and cast on 2 sts between ring finger and little finger, and 2 sts between ring finger and middle finger = 14-14 sts. Work 16—18 rnds in St st (or desired length). Dec same as for other fingers until 6-6 sts rem. Break yarn, thread through rem sts, and weave in on WS.

Little finger: Using yellow yarn, knit 5-5 sts from upper side, 5-5 sts from palm side, and cast on 2 sts between ring finger and little finger = 12-12 sts. Work 12-14 rnds in St st (or desired length). Dec same as for other fingers until 5-6 sts rem. Break yarn, thread through rem sts, and weave in on WS.

Thumb: Using neon green yarn, knit 7-7 sts from holder, pick or knit up 5-7 sts from upper edge of thumb opening, and 1 st from each side = 14-16 sts. Work 14-16 rnds in St st (or desired length), dec same as for other fingers.

Work same for the other glove, but in reverse. Weave in all ends on WS, and sew up holes between fingers.

Viking Superwash

Necklet, hat, socks and mittens 1212-8

Size, Necklet and hat 2-4 6-8 10-12 yrs

ALTERNATIVE YARN: Viking Superwash (100% wool, superwash), Viking Alpaca Sport (30% alpaca, 40% merino wool, 30% nylon), Viking Sportsragg (60% wool, 20% nylon, 20% acrylic), Viking Sportsgarn (100% wool), 50 g ball

MATERIALS FOR WHOLE SET

Red, 160	4	5	5 balls
White, 100	4	4	5 balls

Circular needle and double pointed needles size 3 and 3½ mm – US 2 or 3 and 4 – UK/Canadian 11 and 10 or 9

Gauge: 23 sts = approx. 10 cm/4 in over St st using needles size 3½ mm. **Check your gauge to ensure success.**

When working a patt in 2 clrs, it's important to maintain the order of yarns on your finger. Always hold the darker clr in front throughout the whole project.

NECKLET

Using needles size 3 mm and white yarn, cast on 55 – 65 – 71 sts. Work back and forth 2 cm/0.8 in in K1,P1 rib. Change to needles size 3½ mm. Cont working back and forth as foll: K1, P1, patt A over 51 – 61 – 67 sts and end with P1, K1. Cont working at each side with K1 and P1, and twist yarn for patt A around purl-sts at each side. When work measures approx. 8 cm/3.1 in (end 1 rnd before arrow points out for armholes), leave work aside, and knit same for another piece (= front – and back). Beg from back, and cont working in patt same as before (place a marker), using red yarn cast on 59 – 63 – 69 sts (place a marker), work patt over sts for front (place a marker), and cast on 59 – 63 – 69 sts (place a marker) = 228-256-280 sts on a rnd. Work patt over all 4 pcs, and beg raglan-dec at each 4 seamlines: Work until 2 sts rem before a marker, sl 1 st, K1, pssso, K2tog. Rep dec at each seamline every 2nd rnd until 84 – 88 – 88 sts rem. Change to needles size 3 mm, and cont working with red yarn. Knit 1 rnd. Work 8-10-10 cm/3.1-2-2 in in K1,P1 rib.

Finishing: Dampen work slightly from WS.

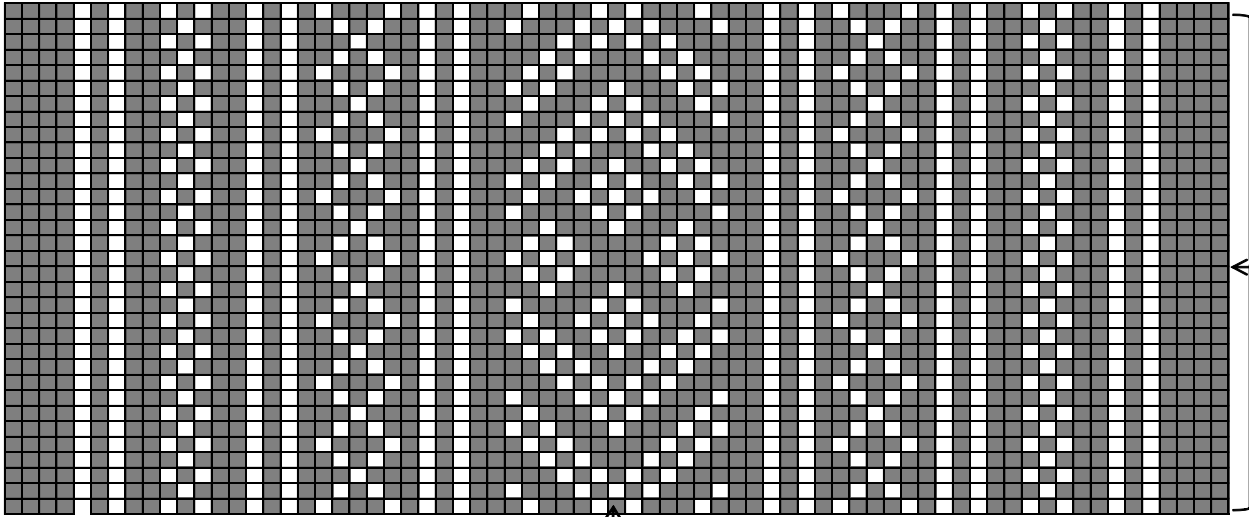
Beg from back. Using crochet hook size 3½ mm and red yarn, work 1 sc-rnd from rib sts at armhole edge until rib sts on front edge. Work same for the other armhole.

Weave in all ends on WS.

HAT (circumference 42 -45-49 cm/16.5-17.7-19.3 in)

Using needles size 3 mm and red yarn, cast on 92 – 100 – 100 sts. Work 6 cm/ in in K1,P1 rib. Change to needles size 3½ mm. Cont working in patt B, and inc evenly across 1st rnd number of sts to be 96 – 104 – 112 sts. When work measures approx. 20-22-24 cm/7.9-9.1-9.4 in, beg crown dec: *Knit all sts tog in pairs. Work 2 rnds in Garter st*, rep *-* 3 times = 12 – 13 – 14 sts on a rnd. Break yarn, thread through rem 12 – 13 – 14 sts, pull tightly, and weave in on WS.

Pattern A til hals

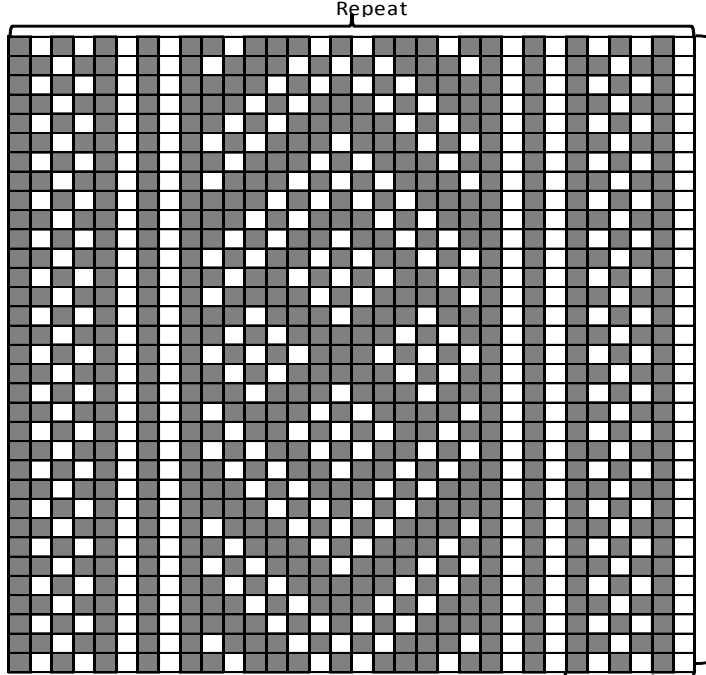


← Beg here sleeves repeat

↑ Mid front, back and sleeves

■ = Red
□ = White

Pattern B for hat



Repeat

Repeat

□ = white
■ = red

Not worked for size 10 - 12 yrs
Not worked for size 6-8 yrs

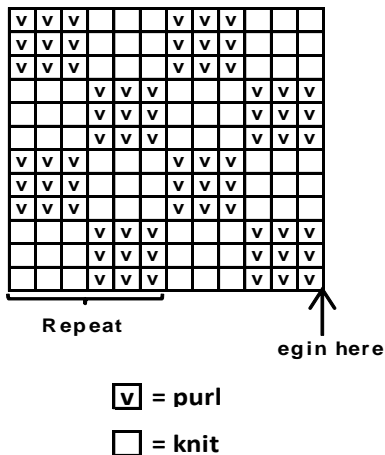
SOCKS (size: 2/4 and 6/8 yrs)

Using needles size 3 mm and white yarn, cast on 48 – 54 sts. Work in rnds approx. 6 cm/2.4 in in patt I (end with a complete square). Change to needles size 3½ mm. Work 1 rnd in St st, and inc evenly across number of sts to be 56 – 60 sts. Work patt II as charted, and then in patt III. When work measures approx. 8 – 13 cm/3.1-5.1 in, (Note! If you wish to make over-kneelength socks, work 12 – 14 cm/4.7-5.5 in more), beg dec. Dec every 4th rnd as charted until 40 – 44 sts rem, and work measures approx. 25 – 28 cm/9.8-11 in. Slip 19 – 21 mid front sts on holder. Work for heel over rem 21 – 23 sts. Work 2 rows in St st with white yarn, and then patt A as charted. Purl 1 row with red yarn. K14 – 16, turn, sl first st, P7 – 9, turn, sl first st, and work 1 st more each time

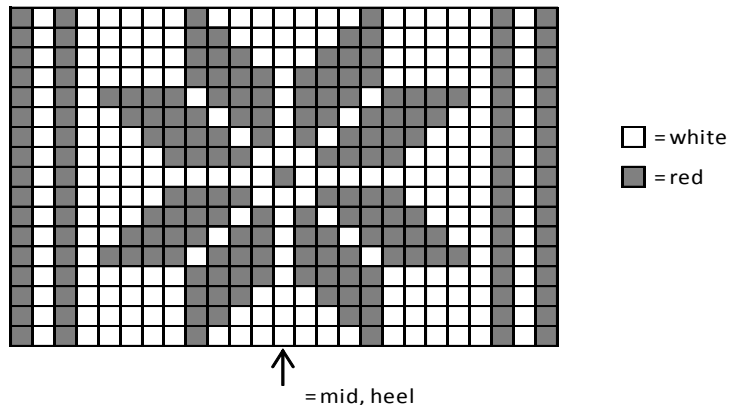
until 2 sts rem at each side. Turn, and knit 1 row. You have now reached left edge of the heel. Knit up 10 – 11 sts along side of the heel, work patt with sts from holder, knit up 10 – 11 sts along right side of the heel. Cont working in rnds in patt B for sole and both sides of the heel, **and** dec 1 st each side of the mid front sts every rnd until 40 – 44 sts rem. Cont working until foot measures 14 – 17 cm/5.5-6.7 in (or as desired before dec). End with a complete or half patt.

Beg dec: Place a marker around mid sts both sides with equal number of sts for both sides. Knit 1 rnd with red yarn, and then in patt B with red yarn for dec. Dec 1 st at each side every 2nd rnd 2 times, and then every rnd until 12 sts rem. Break yarn, thread through rem sts, pull tightly, and weave in on WS.

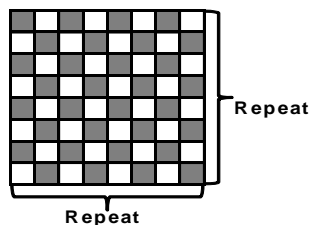
Pattern I



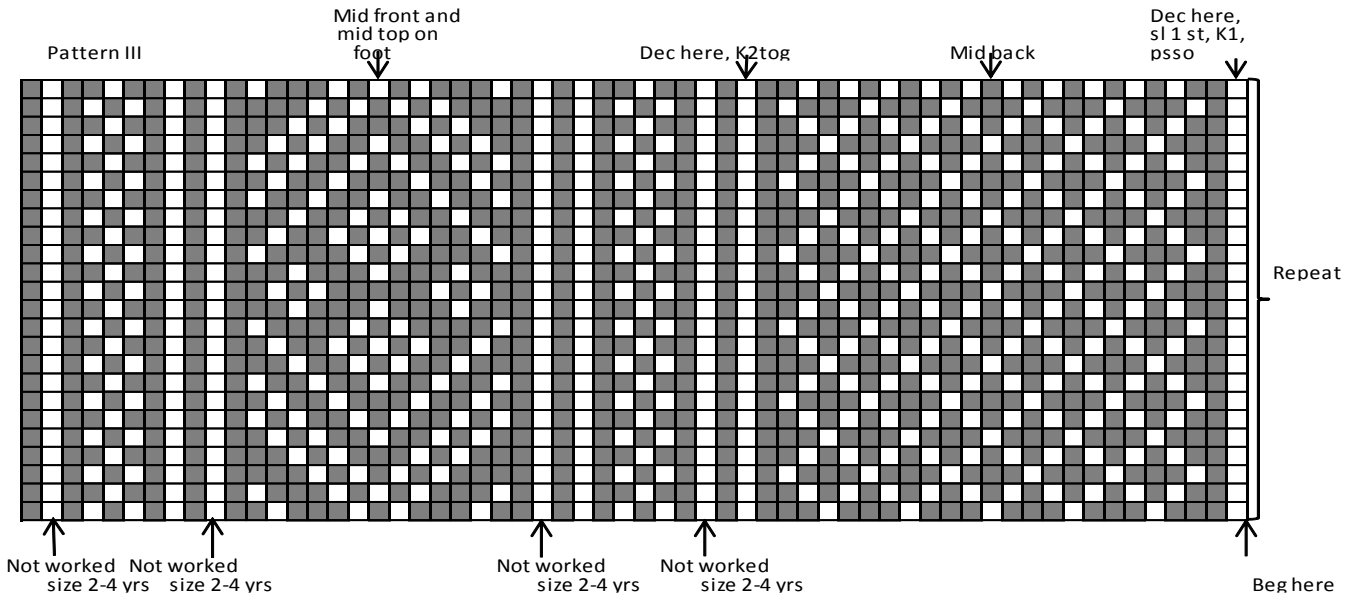
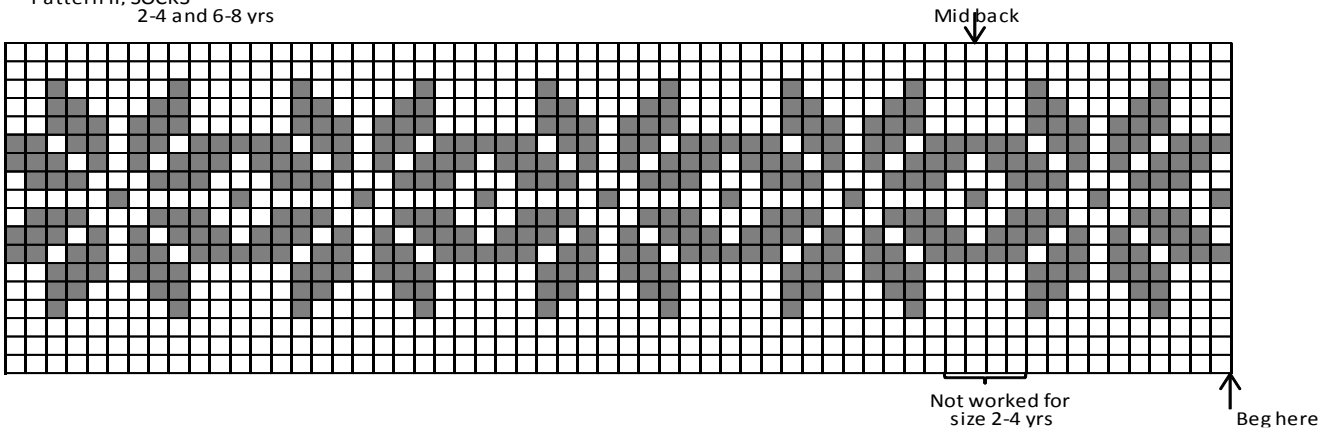
Pattern A for heel



Pattern B



Pattern II, SOCKS
2-4 and 6-8 yrs



- = red, knit
- = white, knit

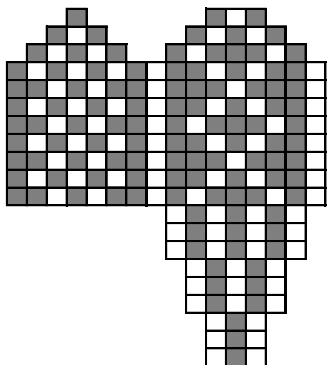
MITTENS

Using needles size 3 mm and white yarn, cast on 32 – 36 sts.
 Work 6 cm/2.4 in in K1,P1 rib. Change to needles size 3½ mm.
 Work in patt as charted, and inc evenly across 1st rnd number of sts to be 37 – 40 sts. Inc for thumb gusset as charted, and slip

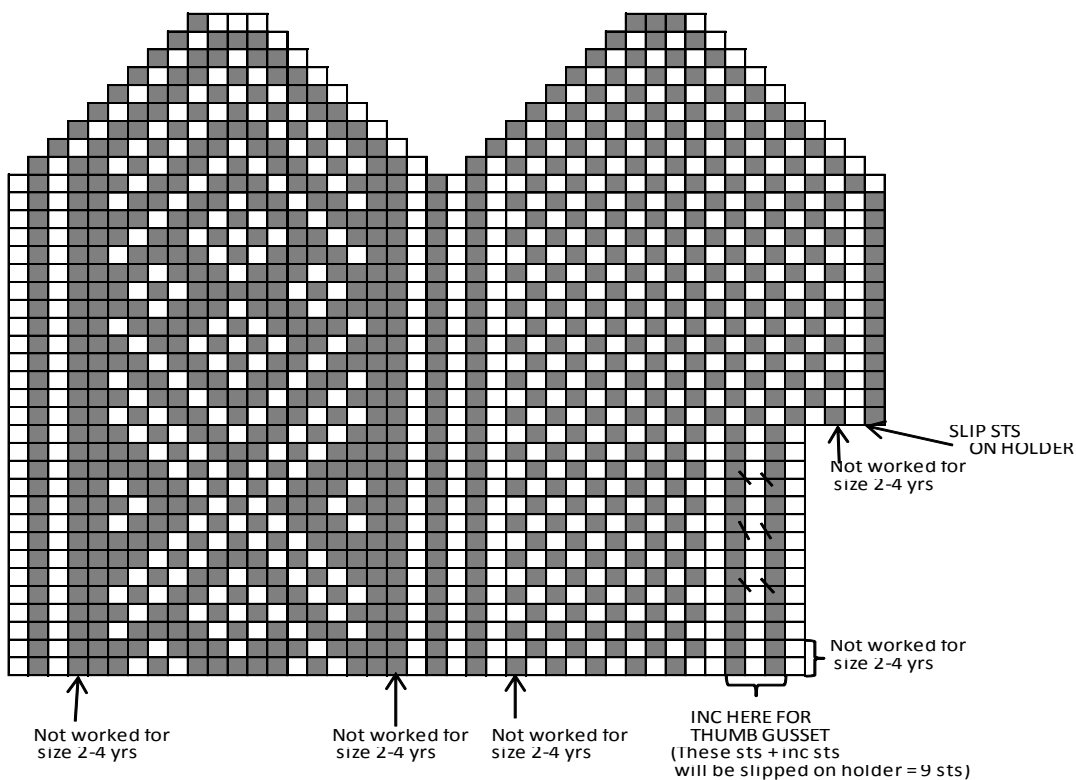
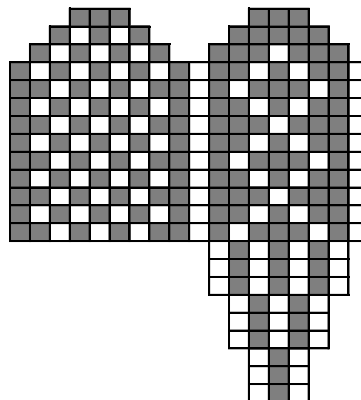
gusset sts on holder as shown in the chart. Cast on 6-7 sts over the gusset sts = 40 – 44 sts. Cont working as charted.

Thumb: Slip sts from holder on a needle. Pick up 5 – 7 sts from the upper edge of thumb opening + 1 st from both sides = 16 – 18 sts. Work in patt for thumb.

thumb, size 2-4 yrs



thumb, size 6-8 yrs



☐ = white

■ = red

☐ = M1 = lift strand btw sts on LH needle, and ktbl. Next sts are worked as charted for thumb.

☐ = Twist yarn here

Viking Superwash

Scarf with hood

1212-9

Size 4/8 yrs

ALTERNATIVE YARN: Viking Superwash (100% wool, superwash), Viking Alpaca Sport (30% alpaca, 40% merino wool, 30% nylon), Viking Sportsragg (60% wool, 20% nylon, 20% acrylic), Viking Sportsgarn (100% wool), 50 g ball

Viking Superwash

White, 100: 5 balls
Fox4you, clr 702: 1 ball

Circular needle and double pointed needles size 3 and 3½ mm – US 2 or 3 and 4 – UK/Canadian 11 and 10 or 9 + pair of knitting needles size 8 mm – US 11 – UK/Canadian 0

Gauge: 23 sts = approx. 10 cm/4 in over St st using needles size 3½ mm. **Check your gauge to ensure success.**

SCARF WITH HOOD

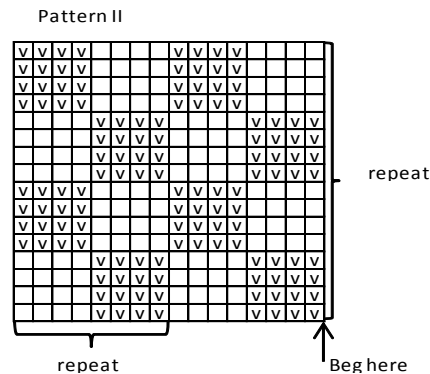
Using needles size 3 mm, cast on 42 sts. Work 2 rows in St st. Change to needles size 3½ mm. Inc 10 sts evenly across first 18 sts = patt I, work patt II over next 24 sts = 52 sts. Cont working back and forth as established until work measures approx. 36 cm/14.2 in. Leave work aside, and work same for another piece but in reverse: Beg with patt II over 24 sts, and end with 18 sts inc to 28 sts and worked in patt I.

Knit 2 pcs tog = purl first and last st of patt II tog There is now an odd number of sts between cables. Cont working in patt I over first and last 28 sts, and K1, P1 over rem 47 sts. Place a marker rnd mid purl-st (= mid back), and place markers rnd 1 st on each shoulder with 17 sts in between. Work 4 rows, and inc 2 sts 3 times over each shoulder: Work until 1 knit-st approx. 5 sts before shoulder marker, inc 1 st into this st + 1 st to next purl-st, rep inc after 3 sts altog. 3 times (= 6 sts inc). Rep inc over the other shoulder. Cont working in rib and cable patt, and rep inc after 3 cm/1.2 in. When rib (neck edge) measures altog. 4 cm/1.6 in, cont working in patt I over first and last 28 sts, and patt II over rem sts (beg and end with a complete square both sides of patt I, and take care that the patt is same on both sides of the mid back. When hood measures approx. 1 cm/0.4 in (measured from rib), inc 1 st both sides of the mid back marker. Rep inc approx. every 3 cm/1.2 in altog. 4 times. When hood measures approx. 18 cm/7.1 in, **dec** 1 st both sides of the mid marker. Rep dec every 4th row 2 times, and then every 2nd row until hood measures approx. 22 cm/8.7 in. Bind off, knit-sts knitwise and purl-sts purlwise. Join top seam.

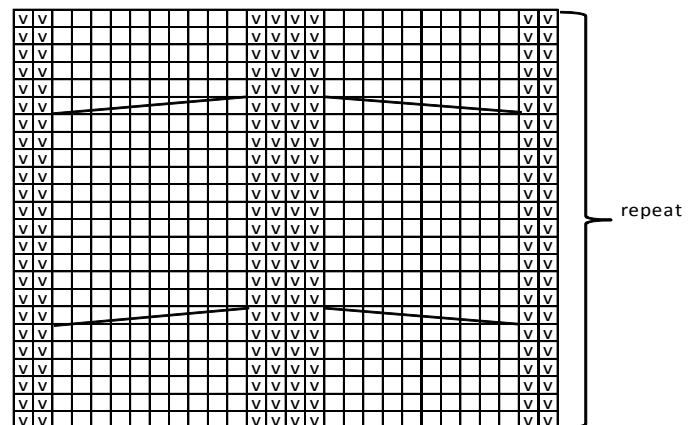
Pompon (Fox4you)

Using needles size 8 mm, cast on 4 sts. Knit 1 row, and inc 1 st to each st = 8 sts. Divide sts on 4 dpn. Next rnd Inc evenly across number of sts to be 16 sts. Knit 1 rnd. Next rnd: Inc evenly across number of sts to be 24 sts. Work 4 rnds in St st. Next rnd: Dec evenly across number of sts to be 16 sts. Knit 1 rnd. Next rnd: Dec evenly across number of sts to be 8 sts. Last rnd: Knit all sts tog in pairs = 4 sts. Break yarn, thread through rem sts, and weave in on WS. Turn work inside out. Thread cast-on end through cast-on sts, pull tightly. Fasten pompon on top of the

hood. Divide rem yarn into 2. Using needles size 8 mm and Fox4you, pick up approx. 20 sts from each short edge, and work back and forth approx 6 rows. Bind off.



PATTERN I



□ = knit (knit on RS, purl on WS)

▣ = purl (purl on RS, knit on WS)

▬ = sl 5 sts on cn, hold to front, K5, knit sts from cn

▬ = sl 5 sts on cn, hold to back, K5, knit sts from cn

Viking Superwash

Cabled beanie

1212-10

Size 6/10 yrs

ALTERNATIVE YARN: Viking Superwash (100% wool, superwash), Viking Alpaca Sport (30% alpaca, 40% merino wool, 30% nylon), Viking Sportsragg (60% wool, 20% nylon, 20% acrylic), Viking Sportsgarn (100% wool), 50 g ball

Blue, 127

3 balls

Circular needle and double pointed needles size 3 and 3½ mm – US 2 or 3 and 4 – UK/Canadian 11 and 10 or 9

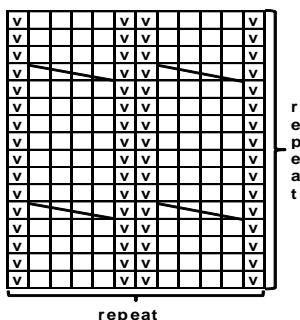
Gauge: 23 sts = approx. 10 cm/4 in over St st using needles size 3½ mm. **Check your gauge to ensure success.**

BEANIE

Using needles size 3 mm, cast on 124 sts. Work *19 sts in K1,P1 rib, patt I over 12 sts*, rep *-* 4 times. Cont working as established until work measures approx. 7 cm/2.8 in (end as charted). Change to needles size 3½ mm. Next rnd: Inc evenly across each rib-panel number of sts to be 30 sts = 168 sts on a rnd. Work and rep patt I until work measures approx. 22 cm/8.7 in. End cables as charted. Dec on next rnd all

purl-sts, sl last knit-st, knit next st, pssso. K2tog. K2. Rep dec over each cable = 112 sts rem. Cont working in St st, and dec for crown: *Knit all sts tog in pairs. Work 2 rnds in St st*. Rep dec altog. 4 times until 7 sts rem. Break yarn, thread through rem sts, pull tightly, and weave in on WS.

Pattern I



□ = knit

∇ = purl

▨ = Sl 2 sts on cn, hold to front, K2, knit sts from cn

Viking Superwash

Slipover

1212-11

Size	1-2	4	6	8	10-12	14 yrs
Bust, approx.	56	63	70	76	83	90 cm
	22	24.8	27.6	29.9	32.7	35.4 in
Length, approx.	33	40	45	50	56	60 cm
	13	15.7	17.7	19.7	22	23.6 in

ALTERNATIVE YARN: Viking Superwash (100 % wool, superwash), Viking Alpaca Sport (30% alpaca, 40 % merino wool, 30% nylon), Viking Sportsragg (60% wool, 20% nylon, 20% acrylic), Viking Sportsgarn (100% wool), 50 g ball

Grey, 115	4	4	5	5	6	6 balls
Dark Grey, 117	2	2	2	3	3	3 balls

Circular needle and double pointed needles size 3 and 3½ mm – US 2 or 3 and 4 – UK/Canadian 11 and 10 or 9

Gauge: 23 sts = approx. 10 cm/4 in over St st using needles size 3½ mm. **Check your gauge to ensure success.**

When working a patt with 2 clrs, it's important to maintain the order of yarns over your finger. Always hold the darker clr in front throughout the whole project.

SLIPOVER

Using needles size 3 mm and grey yarn, cast on 112 – 128 – 144 – 160 – 176 – 190 sts. Work in rnds 4 – 4 – 5 – 5 – 6 – 6 cm/1.6-1.6-2-2-2.4-2.4 in in K1,P1. Change to needles size 3½ mm.

Work in patt A as charted, and inc evenly across 1st rnd number of sts to be 128 – 144 – 160 – 176 – 192 – 208 sts. Place markers at each side, 65 – 73 – 81 – 89 – 97 – 105 sts for front, and 63 – 71 – 79 – 87 – 95 – 103 sts for back. Work patt A, B and C (rep).

Note! Patt B: Work 1st and last st on front all the time with grey yarn. Beg and end both front and back according to the arrows.

When work measures approx. 20 – 25 – 29 – 33 – 38 – 40 cm/7.9-9.8-11.4-13-15-15.7 in, bind off side sts for armholes + 1 st mid front for V-neck. Next rnd: cast on 4 new over all 3 bound-off sts (= purl each rnd without patt). Cont working in rnds in patt as charted, **and** dec 1 st every 2nd rnd, 1 st at each side of the armholes, and 1 st both sides of the V-neck as foll: K2tog before a marker, and after a marker sl 1 st, K1, pssso. Rep dec at armhole edges 3 – 3 – 4 – 4 – 5 – 5 times, and at V-neck edges until 12 – 15 – 17 – 20 – 22 – 26 sts rem for each shoulder, and work measures 33 – 40 – 45 – 50 – 56 – 60 cm/13-15.7-17.7-19.7-22-23.6 in. Bind off.

Finishing: Dampen work slightly from WS. Sew 2 smallest zigzag seams around armholes and mid front for V-neck. Cut open between seams. Sew normal zigzag over cut edges. Join shoulder seams.

Armhole bands: Using needles size 3 mm and grey yarn, pick or knit up approx. 60 – 68 – 72 – 78 – 82 – 90 sts. Work in rnds 3 cm/1.2 in in K1,P1 rib. Bind off in rib. Turn work inside out.

Using needles size 3 mm and grey yarn, pick or knit up approx. 60 – 68 – 72 – 78 – 92 – 90 sts. Work back and forth 5 rows in St st for seam allowance. Work same for the other armhole band.

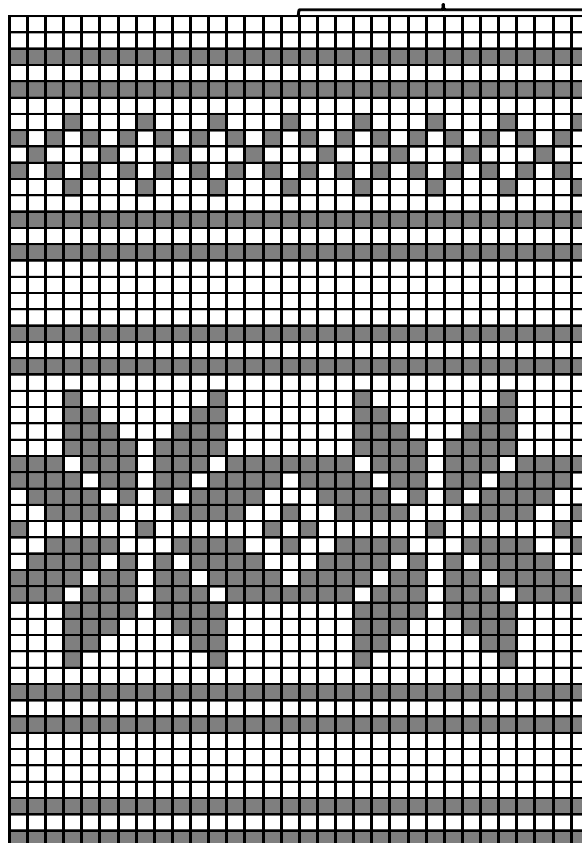
Neck band: Using needles size 3 mm and grey yarn, pick or knit up approx. 98 – 110 – 114 – 120 – 130 – 138 sts. Work in rnds in K1,P1 rib, and dec 1 st both sides of mid front st **every** rnd.

When work measures approx. 3 cm/1.2 in, bind off in rib. Turn work inside out. Using needles size 3 mm and grey yarn, beg from lower edge of V-neck, pick or knit up approx. 98 – 110 – 114 – 120 – 130 – 138 sts. Work back and forth 5 rows in St st for seam allowance. Bind off. Sew seam allowances over cut edges.

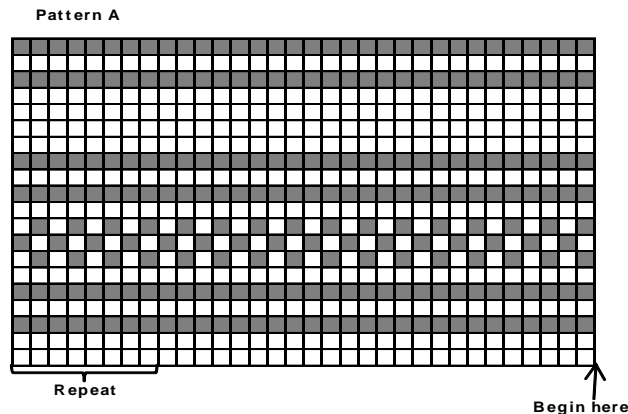
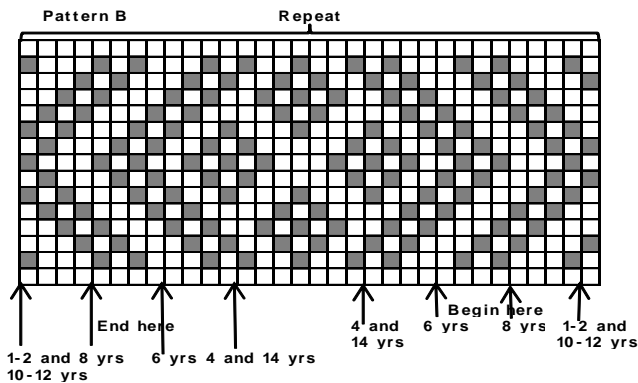
Weave in all ends on WS.

Pattern C

Repeat



Begin here sizes 1-2, 6 and 10-12 yrs
4, 8 and 14 yrs



□ = Grey
■ = Dark grey

Viking Sportsragg

Legwarmers and vest

1212-12

Size	2-4	6	8	10-12 yrs
Bust	62	70	76	83 cm
	24.4	27.6	29.9	32.7 in
Length	27	32	37	45 cm
	10.6	12.6	14.6	17.7 in

ALTERNATIVE YARN: Viking Superwash (100 wool, superwash), Viking Alpaca Sport (30% alpaca, 40% merino wool, 30% nylon), Viking Sportsragg (60% wool, 20% nylon, 20% acrylic), Viking Sportsgarn (100% wool), 50 g ball

VEST

Pink, 581	3	4	4	5 balls
LEGWARMERS (size: 2/4			6/8	10/12 yrs)
Navy Blue, 526	1	1		2 balls
Pink, 581	1		1	1 ball

Circular needle and double pointed needles size 3 and 3½ mm – US 2 or 3 and 4 – UK/Canadian 11 and 10 or 9

Gauge: 23 sts = approx. 10 cm/4 in over St st using needles size 3½ mm. **Check your gauge to ensure success.**

When working a patt with 2 clr, it's important to maintain the order of yarns on your finger. Always hold the darker clr in front throughout the whole project.

LEGWARMERS

Using needles size 3 mm and navy blue yarn, cast on 40 – 44 – 48 sts. Work in rnds 4-5-6 cm/ 1.6-2-2.4 in in K1,P1 rib. Change to needles size 3½ mm. Work in St st, and inc evenly across 1st rnd number of sts to be 48 – 60 – 60 sts. When work measures approx. 5 – 6 – 10 cm/2-2.4-4 in, work patt III as charted. Cont working with navy blue yarn until work measures approx. 22 – 26 – 30 cm/8.7-10.2-11.8 in. Change to needles size 3 mm. Work in K1,P1 rib, until work measures approx. 25 – 30 – 35 cm/9.8-11.8-13.8 in. Bind off in rib.

Work same for the other legwarmer.

VEST

Using needles size 3 mm, cast on 144 – 160 – 176 – 192 sts. Knit 1 row. Inc evenly across number of sts to be 216 – 240 – 264 – 288 sts. Change to needles size 3½ mm. Work and rep patt I until

work measures approx. 8 cm/3.1 in (= 3 cable twists). End cables as charted.

Work now 6 sts in patt I, dec all purl-sts over next 7 – 8 – 9 – 10 cables = 28 – 32 – 36 – 40 sts. Work 12 sts in patt I (= mid under arm), dec all purl-sts over next 16 – 18 – 20 – 22 cables = 64 – 72 – 80 – 88 sts. Work 12 sts in patt I (= mid under arm). Dec all purl-sts over next 7 – 8 – 9 – 10 cables = 28 – 32 – 36 – 40 sts, and end with patt I over 6 sts. Cont working back and forth as established. When work measures approx. 15 – 19 – 23 – 29 cm/5.9-7.5-9.1-11.4 in, divide work at each side for armholes.

Work back and fronts separately. Divide work mid patt I, with 6 sts for each back and front.

Back: Cont working back and forth. When work measures approx. 18 – 23 – 28 – 36 cm/7.1-9.1-11-14.2 in, work patt II, and after that cont working in St st until work measures approx. 27 – 32 – 37 – 45 cm/10.6-12.6-14.6-17.7 in. Bind off.

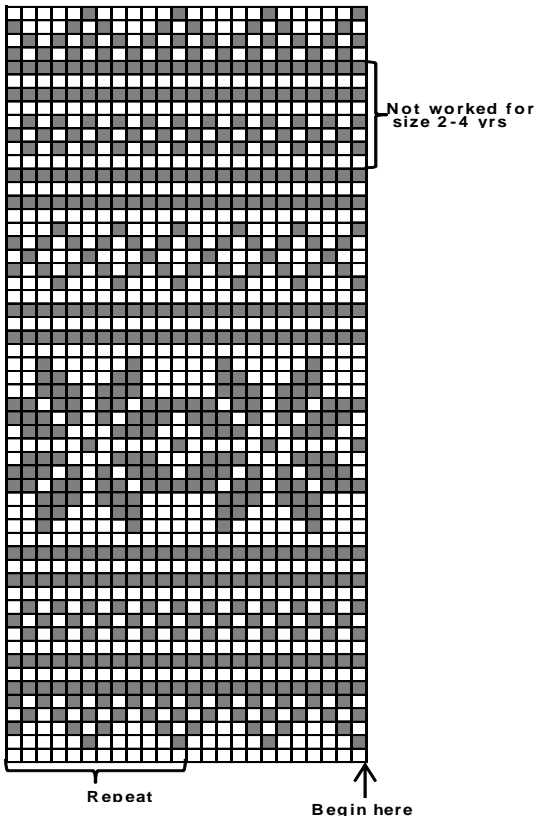
Right front: Work same as for back, **and** dec 1 st inside patt I for V-neck. Rep dec every 2nd row until 14 – 18 – 22 – 26 St sts rem. When work measures same as back, slip first 6 sts on holder, and bind off rem sts.

Left front: Work same as for right front, but in reverse.

Finishing: Join shoulder seams. Slip 6 sts from holder on needles size 3 mm. Cast on 1 st at the edge facing front piece (= selvage st). Cont working back and forth in patt I until border reaches until mid back. Bind off. Work same for the other border. Sew border ends together mid back. Sew border along

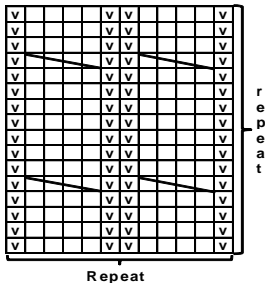
neck edge.

Pattern III



□ : Navv blue
 ■ : Pink

Pattern I



□ = knit
 ▣ = purl
 ▨ = Sl 2 sts on cn, hold to front, K2, knit sts from cn

Circular needle and double pointed needles size 3 and 3½ mm – US 2 or 3 and 4 – UK/Canadian 11 and 10 or 9

Gauge: 23 sts = approx. 10 cm/4 in over St st using needles size 3½ mm. **Check your gauge to ensure success.**

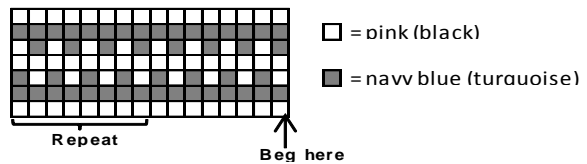
When working a patt with 2 clrs, it's important to maintain the yarns on your finger. Always hold the darker clr in front throughout the whole project.

SOCKS (size 28/33-33/37)

Using needles size 3 mm and basic clr, cast on 40 – 44 sts. Work 8-9 cm/3.1-3.5 in in K1,P1 rib. Change to needles size 3½ mm. Work patt A as charted. Slip 19 – 21 sts on holder. Work back and forth in patt B over rem sts. Purl 1 row with the darker clr over all sts. K14 – 16, turn, sl 1st st, P7 – 9, turn, sl 1st st, and work 1 st more each time until 2 sts rem at each side. Turn, and knit 1 row. You have now reached left edge of the heel. Knit up 10 – 12 sts in patt D along side of the heel, work patt C over 19 – 21 sts on holder, and knit up 10 – 12 sts in patt D along right side of the heel. Cont working in rnds in patt D for sole and both sides of the heel, and patt C over sts for top of the foot, **and** dec 1 st both sides of patt C every rnd until 40 – 44 sts rem. When foot measures approx. 16 – 18 cm/6.3-7.1 in (or desired length before dec). End with a complete or half patt C. In case it doesn't match, you can work in patt A before starting dec.

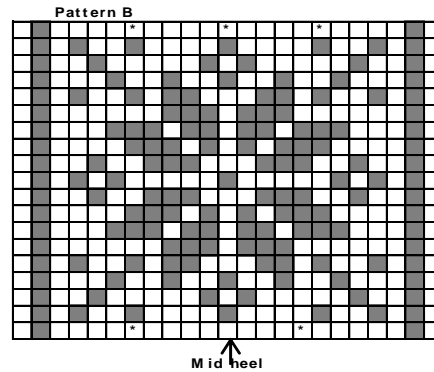
Beg dec: Place markers rnd sts both sides of patt C. Work with darker clr, or in patt D. Dec 1 st both sides of the markers every 2nd rnd 2 times, and after that every rnd until 12 sts rem. Break yarn, thread through rem sts, pull tightly, and weave in WS.

Pattern A



□ = pink (black)
 ■ = navv blue (turquoise)

Chart for heel over 23 and 21 sts



Viking Sportsragg

Socks

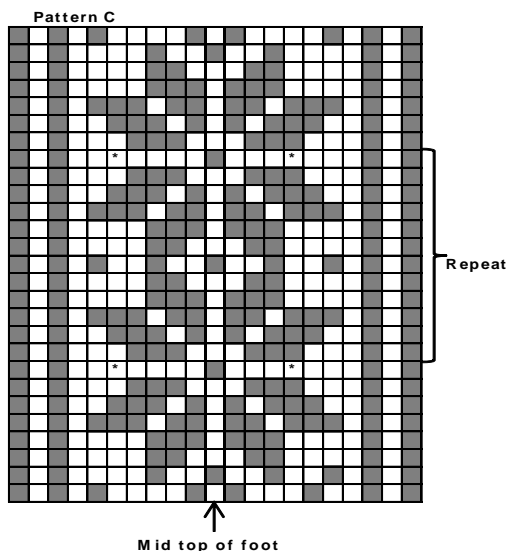
1212-13

Size	28/33	33/37
Foot length, approx.	16	18 cm
	6.3	7.1 in

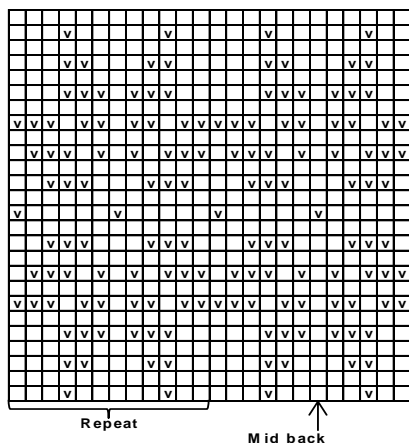
ALTERNATIVE YARN: Viking Superwash (100% wool, superwash), Viking Alpaca Sport (30% alpaca, 40% merino wool, 30% nylon), Viking Sportsragg (60% wool, 20% nylon, 20% acrylic), Viking Sportsgarn (100% wool), 50 g ball

Pink, 581 (Black, 550)	1	2 balls
Navy Blue, 526 (Turquoise, 529)	1	1 ball

Chart for 21 and 19 sts



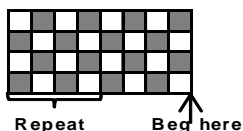
Pattern II



□ = Knit on RS, purl on WS

▣ = Purl on RS, knit on WS

Pattern D



Viking Superwash

Scarf, hat and mittens

1212-14

Size

20 X 120 cm

7.9 x 47.2 in

ALTERNATIVE YARN: Viking Superwash (100% wool, superwash), Viking Alpaca Sport (30% alpaca, 40% merino wool, 30% nylon), Viking Sportsragg (60% wool, 20% nylon, 20% acrylic), Viking Sportsgarn (100% wool), 50 g ball

SCARF

Violet, 168

4 ball

HAT (size

2/4

6/8 yrs)

Violet, 168

2

2 balls

MITTENS

Violet, 168

1

1 ball

Circular needle and double pointed needles size 3 and 3½ mm – US 2 or 3 and 4 – UK/Canadian 11 and 10 or 9

Gauge: 23 sts = approx. 10 cm/4 in over St st using needles size 3½ mm. **Check your gauge to ensure success.**

Seed st:

1st rnd: K1, P1

2nd rnd: Knit all purl-sts, purl all knit-sts

Rep 2nd rnd.

SCARF

Using needles size 3½ mm, cast on 49 sts. Work and rep patt A until scarf measures approx. 120 cm/47.2 in. End with a complete patt. Bind off.

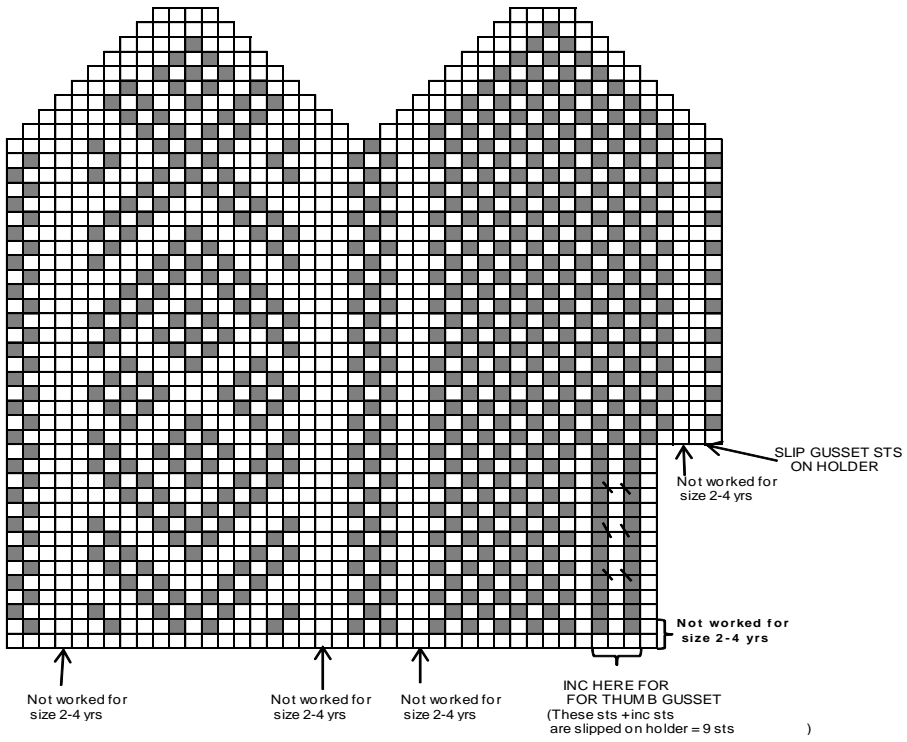
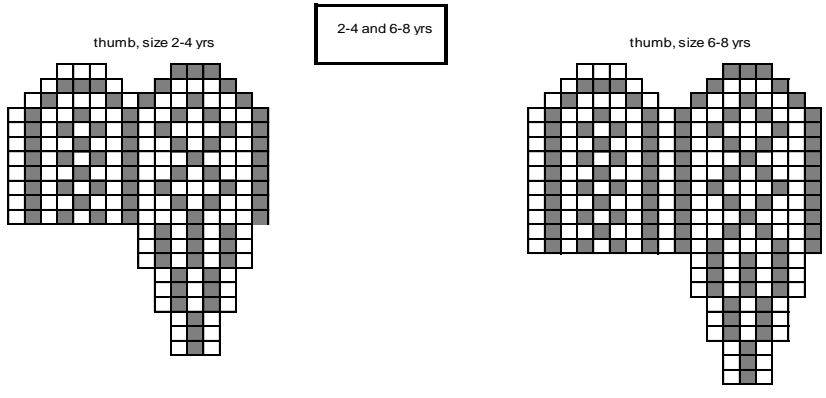
HAT

Using needles size 3 mm, cast on 92 – 100 sts. Work 5-6 cm/2-2.4 in in K1,P1 rib. Change to needles size 3½ mm. Work 1 rnd in St st, and inc evenly across number of sts to be 100 – 112 sts. Work as foll: Patt A over 49 sts, and Seed st over 51 – 63 sts. When work measures approx. 20 – 22 cm/7.9-8.7 in, beg crown dec: *K2, K2tog*, rep *-* across the rnd. Purl 1 rnd, knit 1 rnd. Next rnd: *K1, K2tog*, rep *-* across the rnd. Work 2 rnds in Garter st. Next rnd: Knit all sts tog in pairs. Work 2 rnds in Garter st. Next rnd: Knit all sts tog in pairs. Break yarn, thread through rem sts, pull tightly, and weave in on WS.

MITTENS

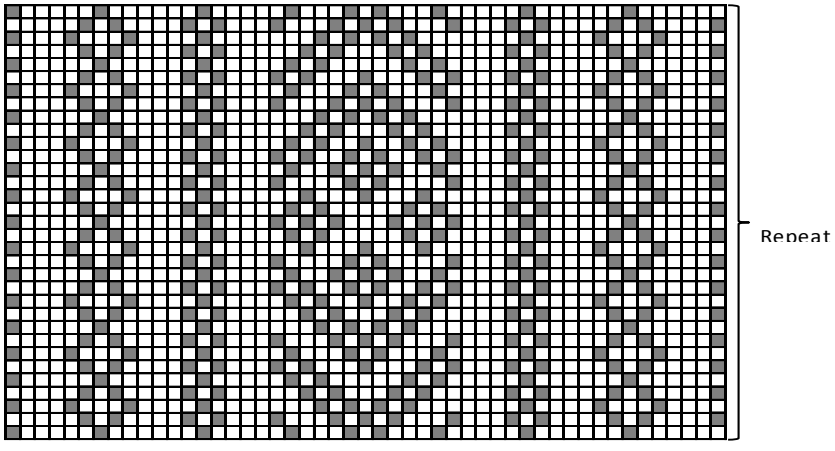
Using needles size 3 mm, cast on 32 – 36 sts. Work in rnds 6 cm/2.4 in in K1,P1 rib Change to needles size 3½ mm. Work in patt as charted, and inc evenly across 1st rnd number of sts to be 37 – 40 sts. Inc for thumb gusset as charted. Slip gusset sts on holder where arrow points out. Cast on 6-7 sts over gusset sts = 40 – 44 sts. Cont working as charted.

Thumb: Slip gusset sts over a needle. Pick up 5-7 sts from upper edge of the thumb opening + 1 st from each side = 16 – 18 sts.



- ☐ = Red
- = purl
- ☒ = M1= lift strand btw sts on LH needle, ktbl. Next sts are worked as charted for thumb.

Pattern A SCARF AND HAT



- ☐ = Knit on RS. purl on WS
- = Purl on RS. knit on WS

Viking Superwash

Kneelength socks, hat, gloves and poncho 1212-15

Size	2/4	6	8
10 yrs			
Shoe size, approx.	24-27	28-31	32-35
36-39			

ALTERNATIVE YARN: Viking Superwash (100% wool, superwash), Viking Alpaca Sport (30% alpaca, 40% merino wool, 30% nylon), Viking Sportsragg (60% wool, 20% nylon, 20% acrylic), Viking Sportsgarn (100% wool), 50 g ball

KNEELENGTH SOCKS

White, 100	1	1	1	1 ball
Red, 160	1	1	1	1 ball
Dark Grey, 117	2	2	3	3 balls

PONCHO

White, 100	5	5	6	7 balls
Red, 160	1	1	1	1 ball
Dark Grey, 117	1	1	1	1 ball

HAT (circumference: 42 – 47 cm/16.5-18.5 in)

White, 100		2	2 balls
Red, 160		1	1 ball
Dark Grey, 117	1		1 ball

GLOVES (size 2/4 – 6/8 – 10 yrs)

White, 100	1	1	1 ball
Red, 160	1	1	1 ball
Dark Grey, 117	1	2	2 balls

Circular needle and double pointed needles size 3 and 3½ mm – US 2 or 3 and 4 – UK/Canadian 11 and 10 or 9

Gauge: 23 sts = approx. 10 cm/4 in over St st using needles size 3½ mm. **Check your gauge to ensure success.**

KNEELENGTH SOCKS

Using needles size 3 mm and dark grey yarn, cast on 46-52-58-60 sts. Work in rnds 4-5-5-6 cm/1.6-2-2-2.4 in in K1tbl,P1 rib. Change to needles size 3½ mm. Place a marker beg of rnd = mid back. Knit 1 rnd, and inc evenly across number of sts to be 48-48-60-60 sts.

Cont working in St st with patt A. When work measures 12-13-15-20 cm/4.7-5.1-5.9-7.9 in, dec as foll: dec 1 st both sides of the marker approx. every 3 cm/1.2 in When patt A is ready, cont working in St st with dark grey yarn until work measures approx. 25-28-35-38 cm/9.8-11-13.8-15 in (or desired length before heel), and you have 36-38-44-48 sts on a rnd. Work heel over 18-20-22-24 mid back sts: Work back and forth 18-20-22-24 rows in St st, knit 1 row until 7-7-8-9 sts rem, sl 1 st, K1, pssso, turn, purl until 7-7-8-9 sts rem, P2tog, turn, knit until 6-6-7-8 sts rem, sl 1 st, K1, pssso, turn, purl until 6-6-7-8 sts rem, P2tog, turn, cont dec in the same way, with 1 st less each time until 6-8-8-8 mid sts rem.

Pick or knit up 9-10-11-12 sts from each side of the heel + and knit 18-18-22-24 sts top of foot. Cont working in rnds in St st, and dec 1 st both sides of the heel every 2nd rnd until 36-38-44-48 sts rem. Cont working in rnds in St st until foot measures approx. 12-14-16-18 cm/4.7-5.5-6.3-7.1 in, or approx 3 cm/ in less than desired length. Place markers each side, 18-19-22-24 sts for each side. Beg dec: Work until 2 sts rem before a marker, K2tog, K2togtbl. Rep dec at each side every rnd until 8 sts rem. Break yarn, thread through rem sts, pull tightly, and weave in on WS

Work same for the other sock.

Weave in all ends on WS.

PONCHO

Using needles size 3 mm and white yarn, cast on 216-228-240-252 sts. Work in rnds approx. 3 cm/1.2 in in St st. Purl 1 rnd (= folding edge) and 2 rnds in St st. Change to needles size 3½ mm. Work in patt A as charted, but turn the chart upside down, ending with stripe patt.

When patt is ready, cont working with white yarn. Size 6 yrs: Dec evenly across 1st rnd number of sts to be 224 sts. Place 8 markers, with 27-28-30-32 sts for each panel. Cont working in St st with white yarn, and dec 1 st both sides of each marker approx. every 3-3-3½-3½ cm/1.2-1.2-1.4-1.4 in until 88-100-112-108 sts rem When work measures 35-37-40-43 cm/13.8-14.6-15.7-16.9 in, measured from folding edge, work 1 rnd with red, 1 rnd with white, 1 rnd with dark grey and 2 rnds with white yarn, **but** dec evenly across last rnd number of sts to be 82-88-96-100 sts. Knit an eyelet rnd: *K2tog, 1 yo*, rep *-* across the rnd. Knit 1 rnd. Work approx 13-15-18-20 cm/5.1-5.9-7.1-7.9 in in K1tbl,P1 rib. Bind off in rib.

Weave in all ends on WS.

Fold lower edge in double and sew on WS.

Fold collar in double on RS

Twist a cord using double yarn, and thread through eyelet rnd.

Make 2 pompons, diameter approx 5 cm/2 in, and fasten to each end of the cord.

HAT (circumference: 42 – 47 cm/16.5-18.5 in)

Using needles size 3 mm and white yarn, cast on 96-108 sts. Work in rnds 3 cm/1.2 in in St st. Purl 1 rnd (= folding edge), and work 2 rnds with white yarn. Cont working in patt A as charted. When patt is ready, change to needles size 3½ mm. Cont working in St st with dark grey yarn. When work measures 20-24 cm/7.9-9.4 in, measured from folding edge, purl 1 rnd. Cont working back and forth 2 cm/0.8 in in St st. Bind off. Fold upper edge in double, and sew on WS to form a tunnel. Fold lower edge in double, and sew on WS. Twist a cord, approx. 1 ½ m/ in long, using double yarn, and thread through the casing in the upper edge. Pull the cord to tighten the top, and adjust length of the cord as desired. Make 1 red and 1 dark grey pompon, diameter approx 4-5 cm/1.6-2 in, and fasten to each end of the cord. Weave in all ends on WS.

GLOVES (size 2/4 – 6/8 – 10 yrs)

Using needles size 3 mm and dark grey yarn, cast on 36-42-48 sts. Work in rnds 5-6-7 cm/2-2.4-2.8 in in K1tbl,P1 rib. Change to needles size 3½ mm. Cont working in St st with patt B. Work in St st with dark grey yarn until work measures approx. 2-2-2 cm/0.8-0.8-0.8 in, measured from rib. Inc for thumb gusset: K3, M1, K1 (= mid st for gusset), M1, knit rem sts. Cont inc every 3rd rnd with 2 more sts between each inc until you have 9-9-11 sts for gusset. Slip gusset sts on holder, and cast on 1 st over gusset sts on next rnd. Cont working in rnds until work measures approx. 2-3-4 cm/0.8-1.2-1.6 in, measured from thumb opening. Work for the fingers as foll:

Index finger:

Knit 5-6-7 sts from upper side, 5-6-7 sts from palm side, and cast on 2 sts between index finger and middle finger = 12-14-16 sts. Work 14-16-18 rnds in St st (or desired length). Knit all sts tog in pairs until 6-7-8 sts rem. Break yarn, and thread through rem sts.

Middle finger:

Knit 5-5-6 sts from upper side, 5-5-6 sts from palm side, cast on 2 sts between index finger and middle finger and 2 sts between middle finger and ring finger = 14-14-16 sts. Work 18-20-22 rnds in St st (or desired length). Dec same as for index finger until 7-7-8 sts rem. Break yarn, and thread through rem sts.

Ring finger:

Knit 4-5-6 sts from upper side, same number of sts from palm side, cast on 2 sts between ring finger and little finger and 2 sts

between ring finger and middle finger = 12-14-16 sts. Work 16-18-20 rnds in St st (or desired length). Dec same as for other fingers until 6-7-8-8 sts rem. Break yarn, and thread through rem sts.

Little finger:

Knit 4-5-5 sts from upper side, same number of sts from palm side, and cast on 3 sts between little finger and ring finger = 11-13-13 sts. Work 12-14-16 rnds in St st (or desired length). Dec same as for other fingers until

6-7-7 sts rem. Break yarn, and thread through rem sts.

Thumb:

Slip 9-9-11 gusset sts on needle, pick or knit up 3 sts from upper edge of the thumb opening, and 1 st from each side = 14-14-16 sts. Work 14-16-18 rnds in St st (or desired length). Dec same as for other fingers.

Work same for the other glove, but in reverse.

Weave in all ends on WS.

Viking Superwash

Dog's sweater

1212-16

Size	XS	S	M	L
Neck, approx.	30	40	45	53 cm
	11.8	15.7	17.7	20.9 in
Chest	42	52	62	73 cm
	16.5	20.5	24.4	28.7 in
Back, length	30	38	48	58 cm
	11.8	15	18.9	22.8 in

ALTERNATIVE YARN: Viking Superwash (100 % wool, superwash), Viking Alpaca Sport (30 % alpaca, 40%merino wool, 30% nylon), Viking Sportsragg (60% wool, 20% nylon, 20% acrylic), Viking Sportsgarn (100% wool), 50 g ball

Dark Grey, 117 2 2 3 4 balls
 White, 100 1 2 2 3 balls

Circular needle and double pointed needles size 3 and 3½ mm – US 2 or 3 and 4 – UK/Canadian 11 and 10 or 9 + approx. 1–1,2- 1,35-1,5 m/39.4-47.2-53.1-59.1 in band, 2 pewter buttons

Gauge: 23 sts = approx. 10 cm/4 in over St st using needles size 3½ mm. **Check your gauge to ensure success.**

Note! Measure of the chest is most important when choosing the size.



When working a patt with 2 clr, it's important to maintain the order of clr on your finger. Always hold the darker clr in front throughout the whole project.

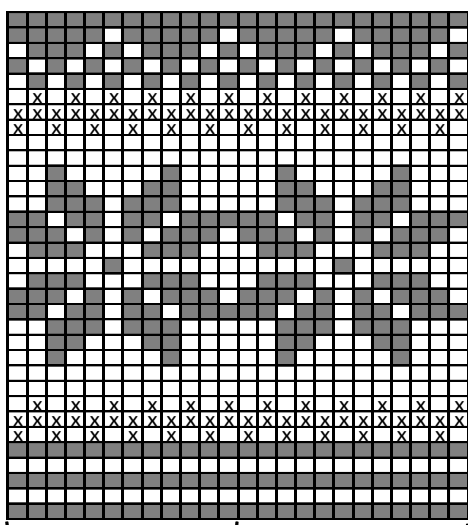
Beg from neck.

Using needles size 3½ mm and dark grey yarn, cast on 62-84-96-114 sts. Work back and forth in St st. When work measures 7-8-9-10 cm/2.8-3.1-3.5-4 in, cast on 8 sts beg of RS row, and 15 sts end of the row. Purl 1 row over all sts = folding edge. You have now 85-107-119-137 sts on a row. Work as foll: Patt I over 8 sts (= buttonband), St st over 69-91-103-121 sts, purl 1 (for folding) and St st over 7 sts. When work measures 2-2-3-3 cm/0.8-0.8-1.2-1.2 in, measured from folding edge, make 2 buttonholes over 3 sts, 2 sts on each side of the purl-st. When work measures 5-5-6-7 cm/2-2-2.4-2.8 in, make another 2 corresponding buttonholes. When work measures 7-8-9-10 cm/2.8-3.1-3.5-4 in, measured from folding edge, bind off 8 first and 7 last sts = 70-92-104-122 sts rem. Cont working in **rnds** in St st. Knit 1 rnd, and inc evenly across number of sts to be 96-120-144-168 sts. Place a marker at split for neck band = mid back, and another marker mid underneath. Break yarn, and beg work from mid under. Work in patt II.

When work measures 7-8-12-15 cm/ 2.8-3.1-4.7-5.9 in, measured from neck band, divide work for front legs: Slip 30-42-54-66 mid sts on holder = chest (= 15-21-27-33 sts both sides of the marker underneath).

Cont working back and forth in patt for back same as before. When patt II is ready, cont working in St st with dark grey yarn. When work measures approx. 15-18-24-29 cm/5.9-7.1-9.4-11.4 in, measured from neck and, and leg openings measure approx. 8-10-12-14 cm/3.1-4-4.7-5.5 in, slip sts for back on holder. Slip chest sts on needles size 3½ mm, and cont working back and forth in patt same as before. When front measures same as back,

PATTERN A

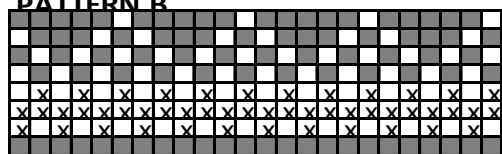


Repeat

Beg here

- = dark grey
- = white
- = red

PATTERN B



repeat

Beg here

slip all sts on same circular needle. Cont working in rnds in patt II, and after that in St st with dark grey clr approx. 5-8-10-13 cm/2-3.1-4-5.1 in, or desired length before binding off (Note: Measure carefully especially for male dogs). Bind off 37-47-57-67 mid sts mid under = 59-73-87-101 sts rem. Cont working back and forth in St st with dark grey yarn, and bind off beg of each row, 8-10-12-14x2 sts, and 1 st beg of each row until 25-31-37-43 sts rem. Work measures now approx. 30-38-48-58 cm/11.8-15-18.9-22.8 in, measured from neck band.

Band around bound-off edge

Slip rem sts on a short circular needle size 3½ mm, and using dark grey yarn pick or knit up sts along bound-off edge altog. approx. 116-140-164-184 sts, (multiple with 4). Work in rnds approx. 2-3-4-4 cm/0.8-1.2-1.6-1.6 in in K2,P2 rib. Bind off.

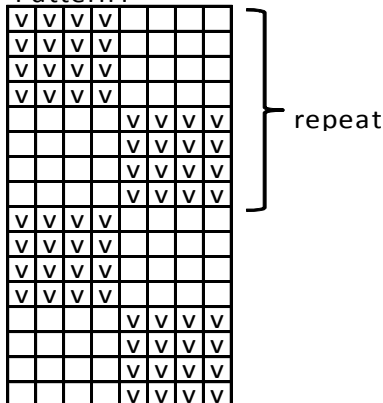
Band around leg openings

Using needles size 3 mm and dark grey yarn, pick or knit up approx. 40-48-52-56 sts around leg opening (multiple with 4). Work in rounds approx. 2-3-3-4 cm/0.8-1.2-1.2-1.6 in in K2,P2 rib. Bind off. Work same for the other leg opening.

Finishing of the split on neck band

Fold neck band in double, and sew on WS. Fold buttonhole band, and sew to to lower edge of the buttonband. Fasten buttonband on the opposite side. Sew tiny sts around buttonholes. Sew on band to upper and lower edge of the neck band, and both sides of the buttonband. Sew on buttons.

Pattern I

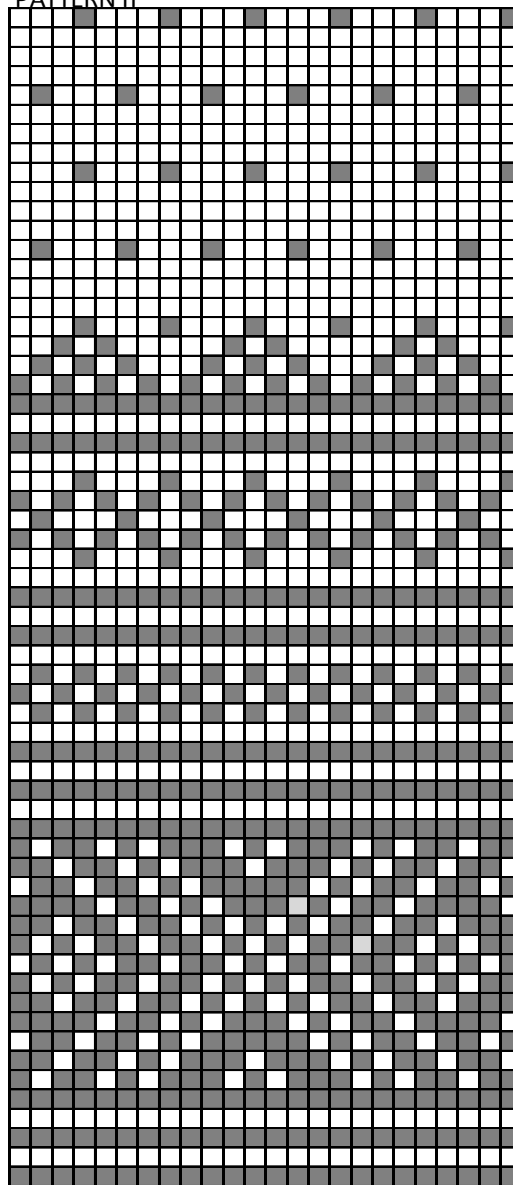


Begin here ↑

☐ = purl

☐ = knit

PATTERN II



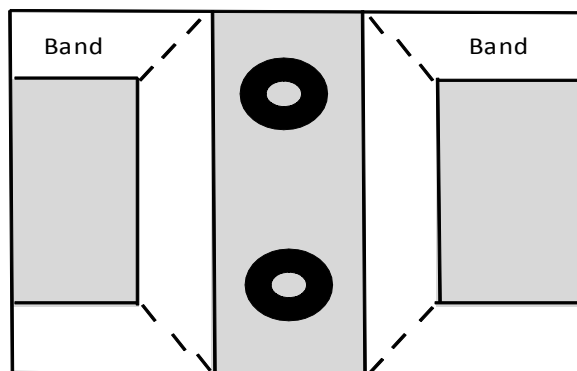
repeat

Beg here ↑

☐ = dark grey

■ = white

Sewing on the and



☐ = dark grey

● = button

Viking Superwash

Blanket

1212-17

Size 52 x 80 cm
20.5 x 31.5 in

ALTERNATIVE YARN: Viking Superwash (100% wool, superwash), Viking Alpaca Sport (30% alpaca, 40% merino wool, 30% nylon), Viking Sportsragg (60% wool, 20% nylon, 20% acrylic), Viking Sportsgarn (100% wool), 50 g ball

Dark Grey, 117 2 balls
White, 102 2 balls
Grey, 115 4 balls

Circular needle and double pointed needles size 3 and 3½ mm – US 2 or 3 and 4 – UK/Canadian 11 and 10 or 9

Gauge: 23 sts = approx. 10 cm/4 in over St st using needles size 3½ mm. **Check your gauge to ensure success.**

When working a patt with 2 clrs, it's important to maintain the order of yarns on your finger. Always hold the darker yarn in front throughout the whole project.

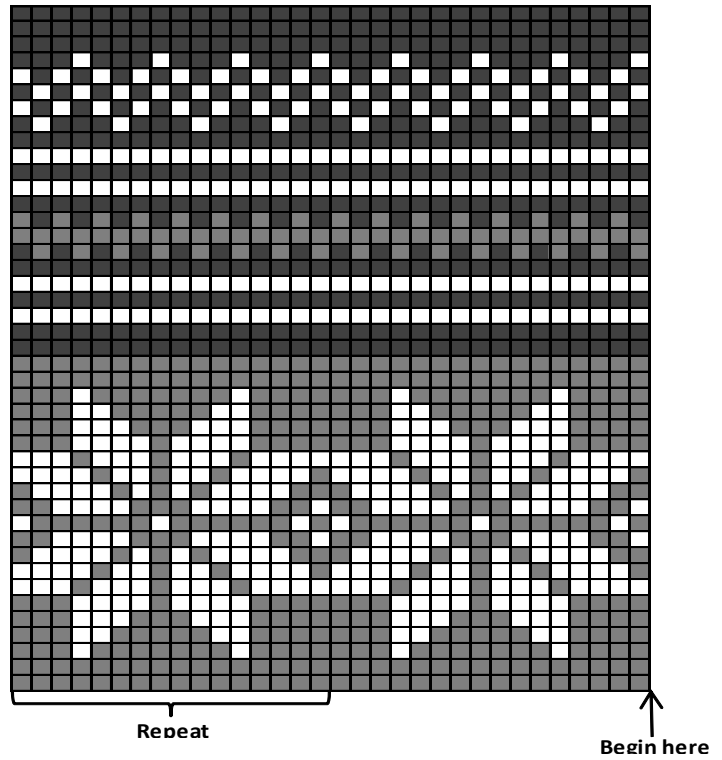
Using needles size 3 mm and grey yarn, cast on 120 sts. Work back and forth in patt I. When patt I is ready, slip 12 first and last sts on holders (= sts for the edges on each side of the blanket). Change to needles size 3½ mm. Cont working in rnds in patt A, and inc 1 st on first rnd = 97 sts (edge sts are not included). Cast on 4 sts to the end of the rnd (= purl each rnd, will be cut open later on, not included in the number of sts). When patt A is ready, work patt B, and after that patt C.

Change to grey yarn, and work the sides. Slip 12 side sts on needles size 3 mm. Cast on 4 sts to the inner edge (facing the blanket), work in St st for seam allowance. Work in patt I until work measures approx. 71 cm/28 in. End with a complete square (It's important that the edge doesn't turn out too long, it's better to leave it little bit shorter than the blanket). Bind off 4 cast-on sts, and leave rem 12 sts on holder. Work same for the other side, but in reverse.

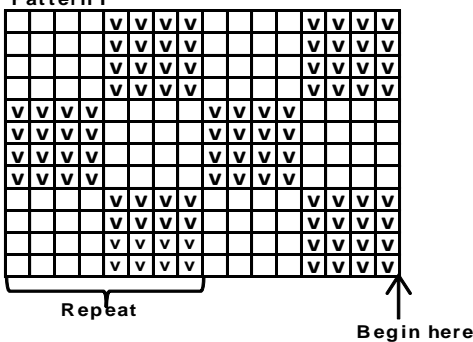
Finishing: Dampen work slightly from WS. Sew 2 smallest zigzag seams to purl-sts. Cut open between seams. Sew normal zigzag over cut edges.

Slip sts from holders over needles, and work back and forth in patt I with grey yarn. Dec 1 st on first row. Check that square patt matches on both sides. When patt is ready, bind off (knit-sts knitwise, purl-sts purlwise).

pattern A

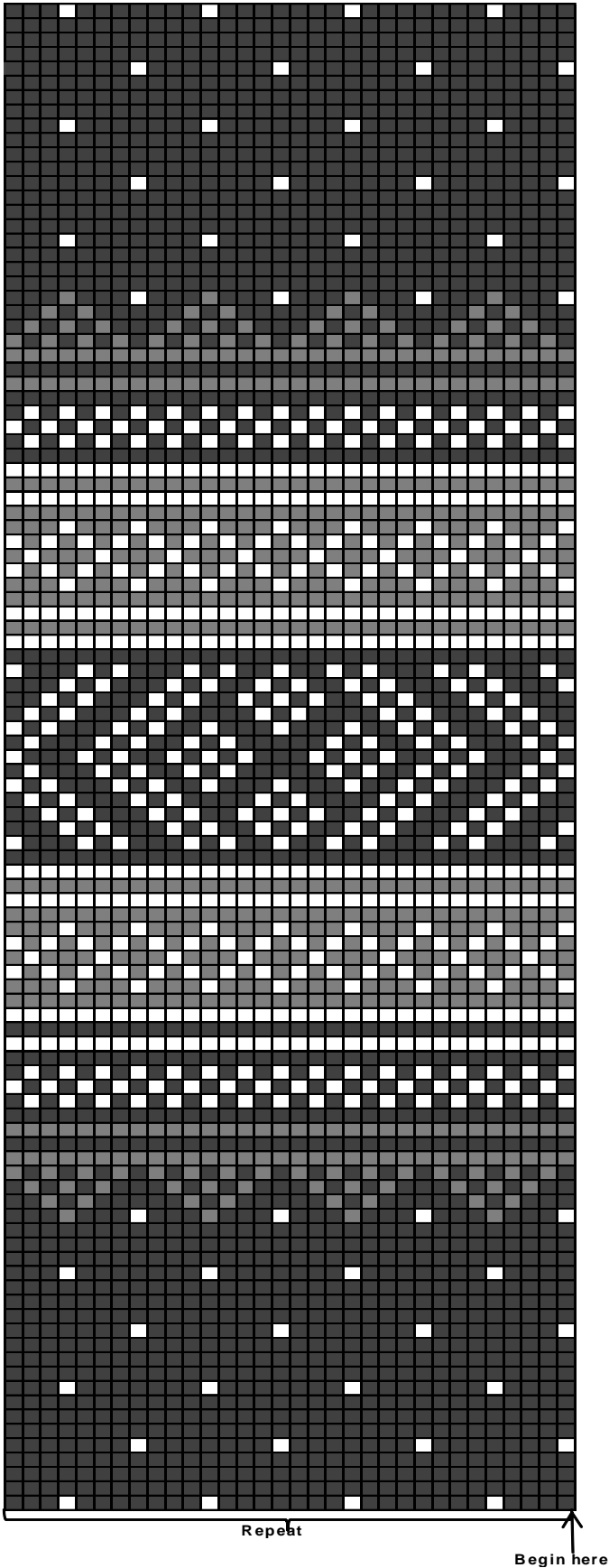


Pattern I

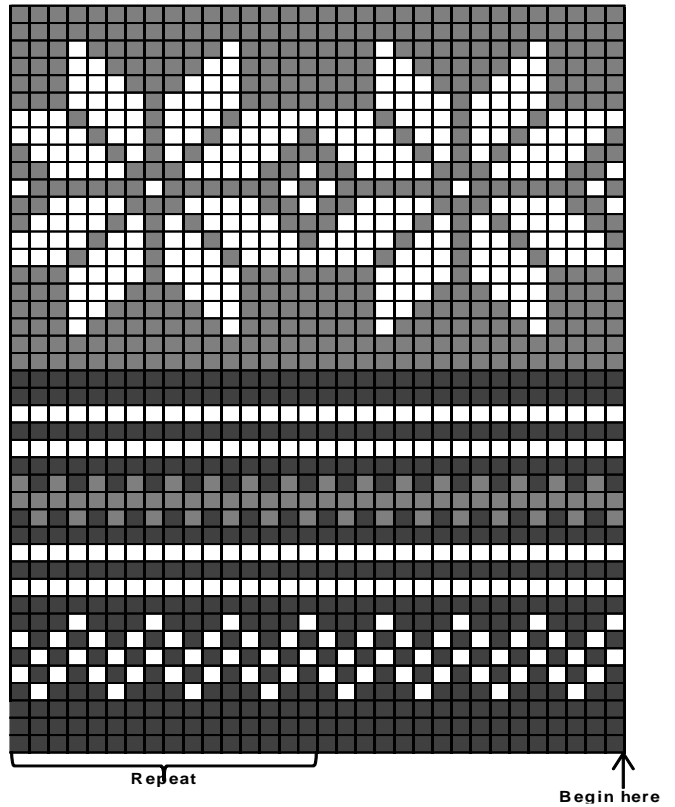


☐v = purl
☐ = knit

Pattern B



Pattern C



Viking Superwash

Necklet and hat

1212-18

Size _____ 2-4 _____ 6-8 _____ 10-12 yrs

ALTERNATIVE YARNS: Viking Superwash (100% wool, superwash), Viking Alpaca Sport (30% alpaca, 40% merino wool, 30% nylon), Viking Sportsragg (60% wool, 20% nylon, 20% acrylic), Viking Sportsgarn (100% wool), 50 g ball

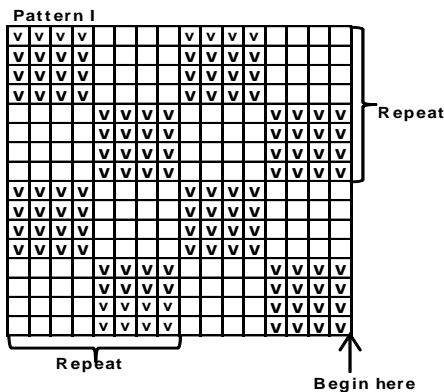
Blue, 127 4 5 6 balls

Circular needle and double pointed needles size 3 and 3 ½ mm – US 2 or 3 and 4 – UK/Canadian 11 and 10 or 9

Gauge: 23 sts = approx. 10 cm/4 in over St st using needles size 3 ½ mm. **Check your gauge to ensure success.**

NECKLET

Using needles size 3 ½ mm, cast on 64 – 68 – 72 sts. Work back and forth in in patt I approx. 16 – 18 – 20 cm/6.3-7.1-7.9 in (end with a complete square). Bind off first and last 12 sts. Leave work aside, and knit another similar piece. Slip all sts on same short circular needle size 3 mm = 80 – 88 – 96 sts on a rnd. Work in rnds 8-10-10 cm/3.1-4-4 in in K1,P1 rib. Bind off in rib. Join 12 sts on each shoulder.



v = purl
 = knit

Hat

Circumference	42	47	52 cm
	16.5	18.5	20.5 in

Using needles size 3 mm, cast on 90 – 96 – 106 sts. Work in rnds 6 cm/2.4 in K1,P1 rib. Change to needles size 3½ mm. Knit 1 rnd, and inc evenly across number of sts to be 96 – 104 – 120 sts. Work in rnds in patt I. When work measures approx. 20 – 21 – 22 cm/7.9-8.3-8.7 in, beg dec: *K2, K2tog, 1 yo*, rep *-* across the rnd. Cont working in patt I until work measures approx. 25 – 26 – 27 cm/9.8-10.2-10.6 in. Bind off, knit-sts knitwise, and purl-sts purlwise.

Finishing: Twist a cord using 4-doubled yarn, approx. 50 cm/19.7 in. Thread cord through eyelet rnd, tighten, and tie into a bow.

Viking Superwash

Capelet, hat and fingerless gloves 1212-19

Size, hat	4	6-10 yrs
Circumference	42	47 cm
	16.5	18.5 in

Size, capelet: 4 6 8-10 yrs

ALTERNATIVE YARN: Viking Superwash (100% wool, superwash), Viking Alpaca Sport (30% alpaca, 40% merino wool, 30% nylon), Viking Sportsragg (60% wool, 20% nylon, 20% acrylic), Viking Sportsgarn (100% wool), 50 g ball

CAPELET

Yellow, 145	2	2	3 balls
Violet, 168	1	1	1 ball
Pink, 164	1	1	1 ball

HAT size: 4 6/10 yrs

Yellow, 145	1	2 balls
Violet, 168	1	1 ball
Pink, 164	1	1 ball

WRISTWARMERS

Yellow, 145	1	1 ball
Violet, 168	1	1 ball
Pink, 164	1	1 ball

Circular needle and double pointed needles size 3 and 3½ mm – US 2 or 3 and 4 – UK/Canadian 11 and 10 or 9 + crochet hook size 3 mm – US C/2 or D/3 – UK/Canadian 11

Gauge: 23 sts = approx 10 cm/4 in over St st using needles size 3½ mm. **Check your gauge to ensure success.**

When working a patt with 2 clr, it's important to maintain the order of yarns on your finger. Always hold the darker clr in front throughout the whole project

HAT

Beg from one earflap

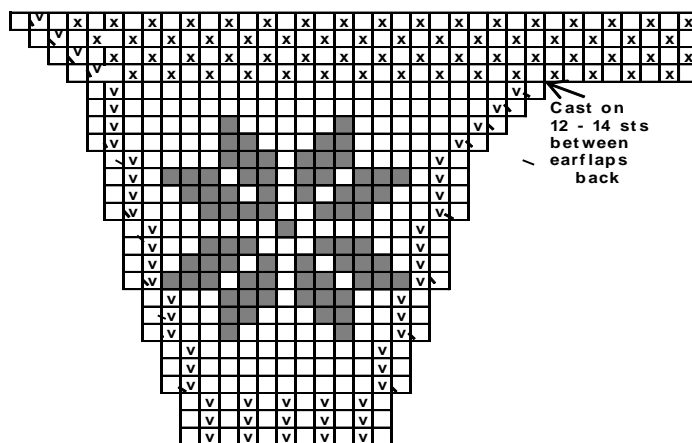
Using needles size 3½ mm and yellow yarn, cast on 11 sts. Work in patt A and inc as charted. Twist yarns before purl-sts at each side. Leave work, and knit same for the other earflap, but in reverse.

Take both earflaps on same needle and cast on with yellow yarn 12 – 14 sts between earflaps = back. Cont working back and forth, and keep on inc as charted.

Cast on now with yellow yarn 28 – 38 sts to the end of row = front, and cont working in rnds = 96 – 108 sts on a rnd. Work in patt B. When patt B is ready, cont working in St st with yellow yarn. When hat measures 15 – 17 cm/5.9-6.7 in (measured mid front), beg crown dec: *K6-7, K2tog*, rep *-* across the rnd. Work 2 rnds without dec. Rep dec every 3rd rnd with 1 st less between each dec until 12 sts rem. Break yarn, thread through rem sts, pull tightly, and weave in on WS.

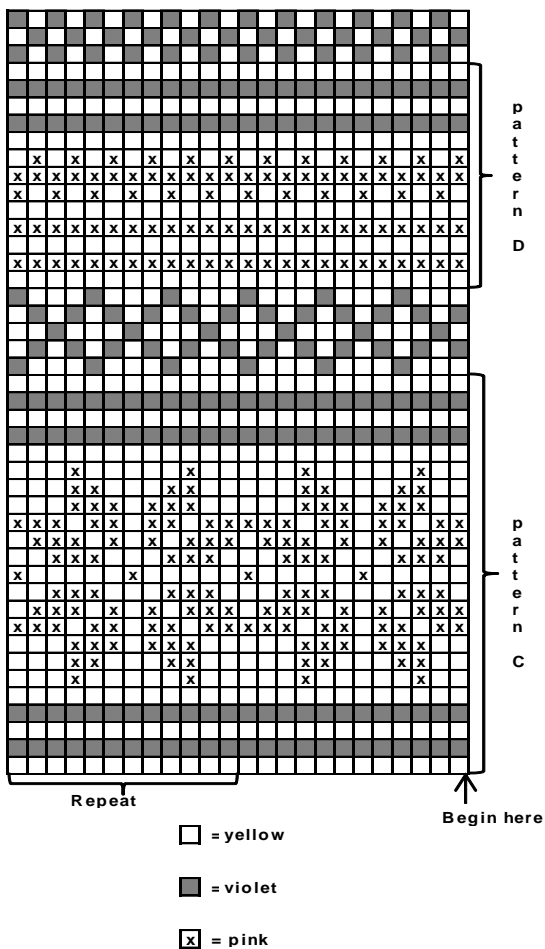
Make a large pompon with pink yarn, and fasten on top. Using crochet hook size 3 mm and yellow yarn, crochet 1 sc-rnd around the lower edge.

Pattern A for HAT

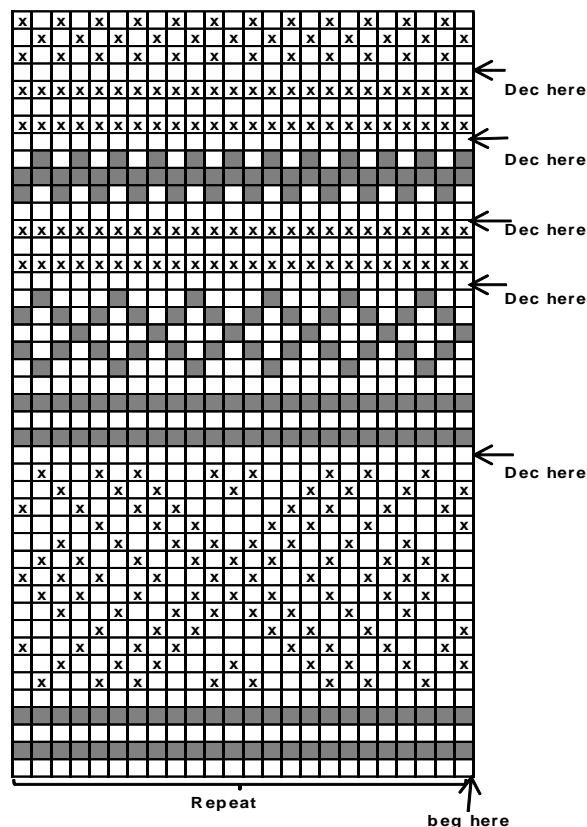


x = pink
 = yellow
 = violet
v = Purl on RS, knit on WS
+ = Inc here

Pattern B for HAT and WRISTWARMERS



Pattern E for CAPELET



WRISTWARMERS

Using needles size 3 mm and yellow yarn, cast on 40 – 44 sts
 Work in rnds 4 cm/1.6 in in K1,P1 rib Change to needles size 3½ mm.
 Work in patt C, and inc evenly across 1st rnd number of sts to be 48 – 48 sts. When patt C is ready, change again to needles size 3 mm. Knit 1 rnd with yellow yarn, and then 4-5 cm/1.6-2 in in K1,P1 rib. Change to needles size 3½ mm. Work in patt D. When patt D is ready, bind off for thumb as foll: K3, bind off 6 – 7 sts, and knit rem sts with yellow yarn. Cont working with yellow yarn, and cast on 6-7 sts over bound-off sts. Work 2 rnds. Change to needles size 3 mm, and dec evenly across next rnd number of sts to be 40 – 44 sts. Work 3 cm/1.2 in in K1,P1 rib. Bind off in rib.

Finishing: Using crochet hook and yellow yarn, crochet 1 sc-rnd to thumb opening.

CAPELET

Using needles size 3 mm and yellow yarn, cast on 240 – 264 – 288 sts. Work 3 cm/1.2 in in K1,P1 rib. Change to needles size 3½ mm. Work in patt E as charted, **and** dec where the arrows point out as foll: 1st dec rnd: Dec evenly across number of sts to be 212 – 224 – 244 sts. 2nd rnd: Dec evenly across number of sts to be 180 – 192 – 210 sts. Next dec rnd: *K4, K2tog*, rep *-* across the rnd. Cont dec with 1 st less between each dec. When patt E is ready, cont working in St st with yellow yarn. Work 2 rnds without dec. Next rnd: Dec evenly across number of sts to be 84 – 88 – 92 sts. Change to needles size 3 mm. Work approx 5-6-7 cm/2-2.4-2.8 in for neck band in K1,P1 rib. Bind off in rib.

Viking Superwash

Hat, kneelength socks and mittens

1212-20

Size 2-4 6-8 yrs

ALTERNATIVE YARN: Viking Superwash (100% wool, superwash), Viking Alpaca Sport (30% alpaca, 40% merino wool, 30% nylon), Viking Sportsragg (60% wool, 20% nylon, 20% acrylic), Viking Sportsgarn (100% wool), 50 g ball

WHOLE SET

Brown, 118 4 5 balls
White, 100 3 4 balls

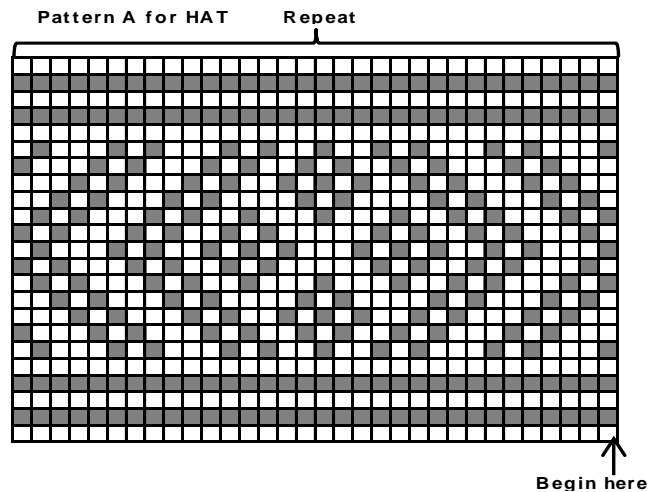
Circular needle and double pointed needles size 3 and 3½ mm – US 2 and 3 or 4 – UK/Canadian 11 and 10 or 9

Gauge: 23 sts = approx. 10 cm/4 in over St st using needles size 3½ mm. **Check your gauge to ensure success.**

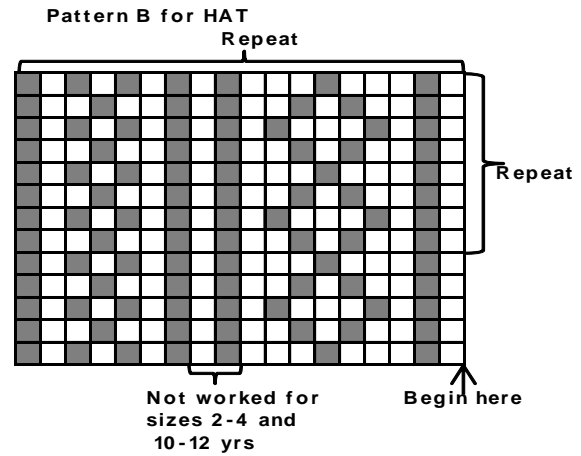
HAT

Using needles size 3 mm and brown yarn, cast on 90 sts (both sizes). Work 2 rnds in K1,P1 rib Change to needles size 3½ mm. Work in patt A, and inc evenly across 1st rnd number of sts to be 96 sts. When patt A is ready, work 2 rnds in St st with brown yarn. Change to needles size 3 mm, and work in rnds 6 cm/2.4 in in K1,P1 rib. Turn work inside out. Change to needles size 3½ mm. Knit 1 rnd, and inc evenly across number of sts to be 96 – 108 sts. Work in patt B, and keep rep it until work measures approx 18-20 cm/7.1-7.9 in (measured from folding). Beg crown dec. Using brown yarn, knit all sts tog in pairs. Work 2 rnds in St st. Rep dec until 24 – 27 sts rem. Break yarn, thread through rem sts. Weave in all ends on WS.

Make a large pompon, and fasten on top.



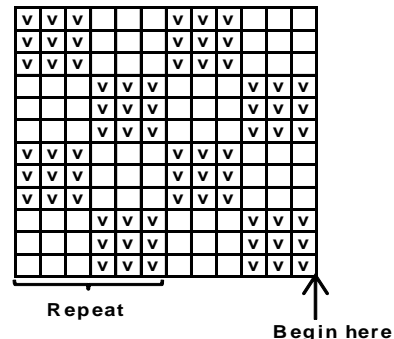
□ = brown
■ = white



KNEELENGTH SOCKS

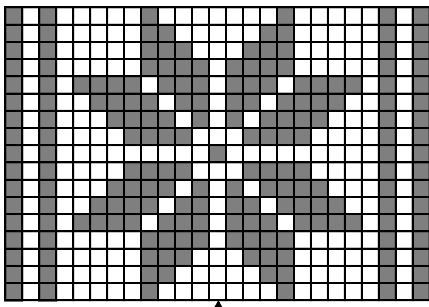
Using needles size 3 mm and white yarn, cast on 48 – 54 sts. Work in rnds approx. 6 cm/ 2.4in in patt I (end with a complete square). Change to needles size 3½ mm. Knit 1 rnd, and inc evenly across number of sts to be 56 – 60 sts. Work in patt II as charted, and then in patt III. When work measures approx 8 – 13 cm/3.1-5.1 in, (if you wish to have over-kneelength socks, work 12-14 cm/4.7-5.5 in more), beg dec. Dec as charted every 4th rnd until 40 – 44 sts rem, and work measures approx. 25 – 28 cm/9.8-11 in. Slip 19 – 21 mid front sts on holder. Work for heel over rem 21 – 23 sts. Work 2 rows in St st with white yarn, and cont working in patt A as charted. Purl 1 row with brown yarn. K14 – 16, turn, slip first st, P7 – 9, turn, slip first st, and work 1 st more each time until 2 sts rem at both sides. Turn, and knit 1 row. You have now reached left edge of the heel. Knit up 10 – 11 sts along the heel, cont working in patt over mid front sts, knit up 10 – 11 sts along right side of the heel. Cont working in rnds, patt B over sole sts and both sides of the heel, **and** dec 1 st both sides of mid front sts every rnd until 40 – 44 sts rem on a rnd. When foot measures approx. 14 – 17 cm/5.5-6.7 in (or desired length before dec), beg dec. Note! Try to end with a complete or half patt. Dec as foll: Place markers around mid sts each side, with same number of sts for each side. Work 1 rnd with brown yarn, and after that patt B over the upper part and with brown yarn over sole and dec. Dec 1 st at each side every 2nd rnd 2 times, and then every rnd until 12 sts rem. Break yarn, thread through rem sts, pull tightly, and weave in on WS.

Pattern I



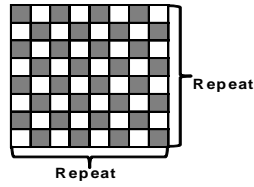
▣ = purl
□ = knit

PATTERN A



= mid heel

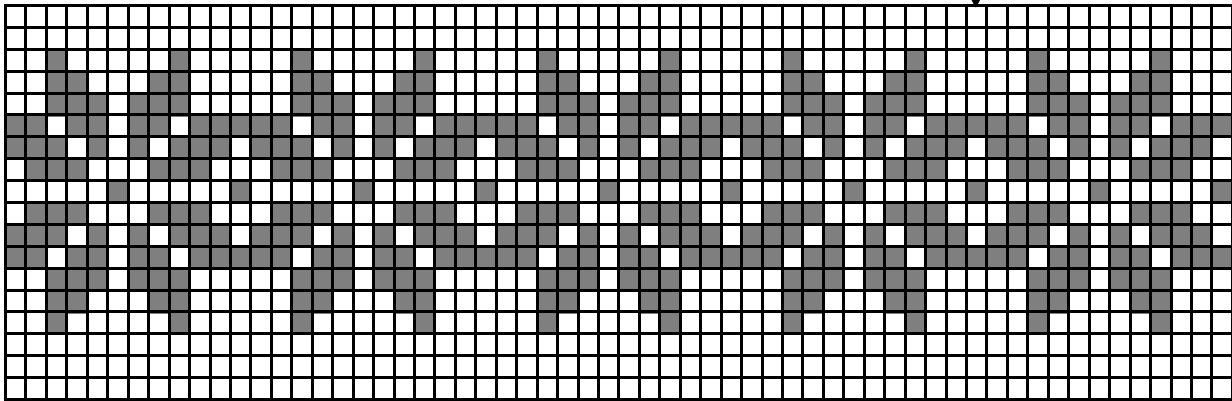
Pattern B



■ = brown, knit
□ = white, knit

Pattern II

2-4 and 6-8 yrs



Mid back

Not worked for size 2-4 yrs

Beg here

Pattern III

Mid front and foran og mid on top of the foot

Dec here, K2tog

Mid back

Dec here Sl 1 st, K1, pssso

Repeat

Not worked for size 2-4 y for size 2-4 yrs

Not worked for size 2-4 yrs

■ = brown, knit
□ = white, knit

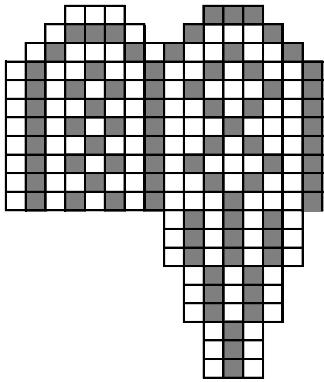
Beg here

MITTENS

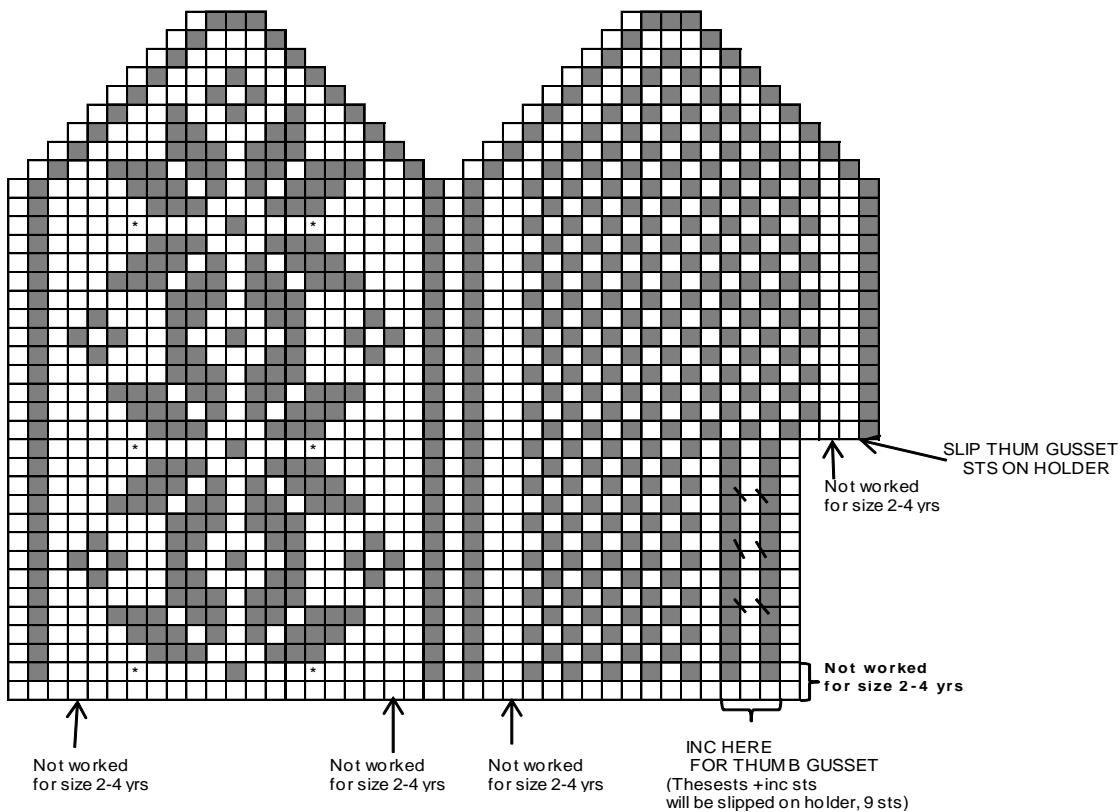
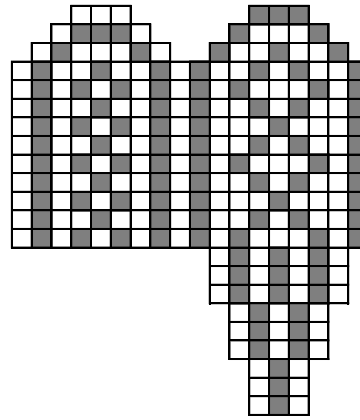
Using needles size 3 mm and brown yarn, cast on 32 – 36 sts. Work in rnds 6 cm/2.4 in K1,P1 rib. Change to needles size 3½ mm. Work patt as charted, and inc evenly across 1st rnd number of sts to be 37 – 40 sts. Inc for thumb gusset as charted. Slip gusset sts on holder where arrow points out. Cast on 6-7 sts over gusset sts = 40 – 44 sts. Cont working as charted.

Thumb: Slip gusset sts on a needle. Pick up 5-7 sts from upper edge of thumb opening + 1 st from each side = 16 – 18 sts. Cont working in patt for thumb.

thumb, size 2-4 yrs



thumb, size 6-8 yrs



□ = brown

■ = white

☞ = Øk 1m her. Plukk opp den hvite tråden mellom maskene, vri den og strikk den hvit. Strikk de neste maskene som vist på diagram for tommel.

☞ = Tvinn tråden her