

# Viking Eco Alpaca - Fox4you

## Shawl, hat and wristwarmers 1209-1

<u>Size</u>	<u>Woman</u>
<u>Length and width</u>	136 x 35 cm
	53,5 x 13,8 in
<u>Circumference, approx.</u>	50 cm
	19,7 in

**ALTERNATIVE YARN: Eco Alpaca (100 % alpaca), 100 g skein, Viking Odin (100% wool, superwash), 100 g ball**

### SHAWL

**Eco Alpaca**

Black, 404

5 skeins

### HAT AND WRISTWARMERS

**Fox4you**

clr 102

4 balls

Circular needle size 5 mm – US 8 – UK/Canadian 6 for shawl, and double pointed needles size and a

short circular needle size 8 mm – US 7 – UK/Canadian 0 for hat and wristwarmers

**Gauge:** Eco Alpaca: 24 sts = approx. 10 cm/4 in over patt using needles size 5 mm. **Check your gauge to ensure success.**

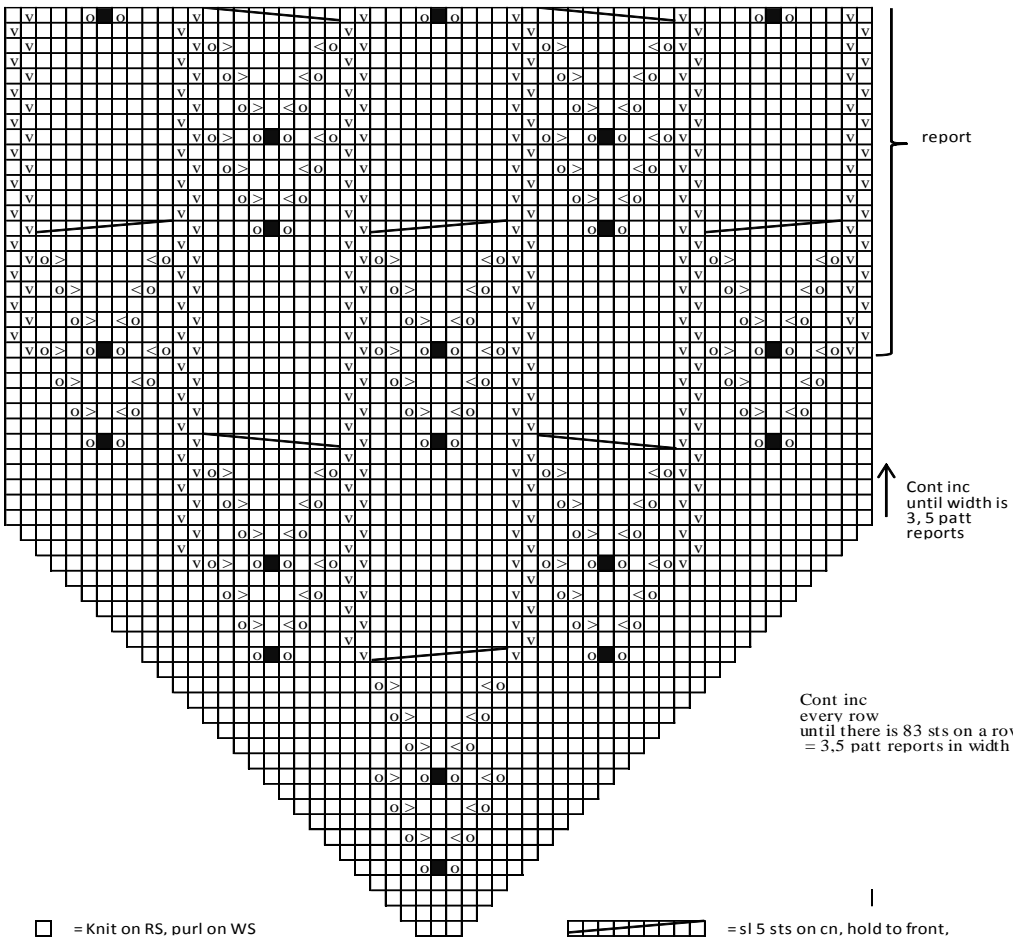
### **SHAWL**

**Worked in two pieces, and joined tog mid back.**

Using needles size 5 mm and Eco Alpaca, cast on 2+3+2 = 7 sts. Work back and forth 2 rows in Garter st. Cont working in patt as charted, and inc 2 sts as charted. Note: 2 first and last sts are worked in Garter st every row. Keep inc until you have altog 83 sts on a row, and you have worked 3,5 patt reports. Cont working in patt until work measures approx. 86 cm/33.9 in = ½ shawl, mid back. Bind off rather loosely.

Work same for the other half.

Sew mid back seam.



- ◻ = Knit on RS, purl on WS
- ∇ = Purl on RS, knit on WS
- = sl 1 st, K2tog, pssso
- ◻◻ = K2tog
- ◻◻◻ = K2togtbl
- = 1 yo

- = sl 5 sts on cn, hold to front, K4, knit sts from cn
- = sl 4 sts on cn, hold to back, K5, knit sts from cn

## **Fox4you**

Work with double yarn min 3 m/118.2 in when you start a new ball of yarn. You don't need to weave in yarn ends, and you can cut off ends quite near to the sts.

## **HAT**

**Beg from one ear flap:** Using needles size 8 mm, cast on 6 sts. Work back and forth in St st, and inc 1 st at each edge every 2<sup>nd</sup> row until you have 10 sts on a row. Cont working until ear flap measures approx. 6 cm/2.4 in. Leave work aside, and knit the other ear flap. Cast on 10 sts between ear flaps = mid back. Cont working back and forth in Garter st until work measures approx. 12 cm/4.5 in, measured from cast-on edge of the ear flaps. Cast on 18 sts mid front (= 48 sts). Cont working in rnds in St st until work measures approx. 23 cm/9.1 in mid back (measured from cast-on edge of ear flaps). Beg crown dec: \*K4, K2tog\*, rep \*- \* across the rnd. Knit 1 rnd without dec. Rep dec every 2<sup>nd</sup> rnd, with 1 st less between each dec until 16 sts rem. Work 2 rnds I St st. Next rnd: Knit all sts tog in pairs = 8 sts rem. Break yarn, thread through rem sts, pull tightly, and weave in on WS.

## **WRISTWARMERS**

Using needles size 8 mm, cast on 20 sts. Work until wristwarmer measures approx. 6-7 cm/2.4-2.8 in (or until half a ball is left). Bind off. Work same for the other wristwarmer.

Brush the fur. You can also spay the fur slightly with water, and pick it up by your fingers.

Dry clean only on all garments knitted from Fox4you.

## ***Viking Eco Alpaca – Fox4you***

**Necklet and wristwarmers 1209-2**

<b>Size:</b>	<b>Woman</b>
<b>Circumference:</b> approx.	50 cm 19.7 in

**ALTERNATIVE YARN: Viking Eco Alpaca (100% alpaca), 100 g skein. Viking Odin (100% wool, superwash), 100 g ball.**

## **NECKLET**

Eco alpaca, Grey, 415 1 skein  
Fox4you, clr 512 5 balls

## **WRISTWARMERS**

Fox4you, clr 512 2 balls  
Eco Alpaca, 415 – (use yarn left over from necklet).

Circular needle and double pointed needles size 4½ mm –US 7 – UK/Canadian 7 for Eco Alpaca and needles size 8 mm – US 11 –UK/Canadian 0 for Fox4you.

**Gauge, Fox4you:** 11 sts = approx. 10 cm/4 in over St st using needles size 8 mm.

**Gauge, Eco Alpaca:** 18 sts = approx. 10 cm/4 in over St st using needles size 4½ mm. **Check your gauge to ensure success.**

**Note! Knit first writwarmers, as some Eco Alpaca from necklet will be needed.**

## **Fox4you**

Work with double yarn min 3 sts when you start a new ball of yarn. You don't need to weave in yarn ends, and you can cut off yarn ends quite close to the sts.

## **WRISTWARMERS**

Using dpn size 4½ mm and Eco Alpaca, cast on 36 sts. Work in rnds 3 cm/1.2 in in K2,P2 rib. Change to needles size 8 mm and Fox4you. Knit 1 rnd, and dec evenly across number of sts to be 22 sts. Work in rnds 15 cm/5.9 in in St st (or until you have finished 1 ball). Turn inside out. Change to needles size 4½ mm and Eco Alpaca. Knit 1 rnd, and inc evenly across number of sts to be 36 sts. Work in rnds 3 cm/1.2 in in St st. Bind off .

## **NECKLET**

**Beg from upper edge:** Using needles size 4½ mm and Eco Alpaca, cast on 88 sts. Work in rnds in K2,P2 until you have finished the skein. Change to needles size 8 mm, and cont working in rnds in St st with Fox4you, and dec evenly across first rnd number of sts to be 70 sts. Place 7 markers across the rnd, 10 sts between each marker. Cont working in rnds, and inc 2 sts at each maker: knit same st 3 times, first tfl, then tbl, and once again tfl (= 2 sts inc). Rep inc at each marker approx. every 6<sup>th</sup> rnd altog. 4 times (= 126

sts). Bind off rather loosely.

Brush the fur. You can also spray the fur slightly with water, and pick it up by your fingers.

Dry clean only on all garments knitted from Fox4you.

## ***Viking Eco Alpaca – Fox4you*** **Hat, necklet and wristwarmers 1209-3**

<u>Size</u>	<u>Woman</u>
<u>Circumference, hat</u>	50 cm 19.7 in
<u>Necklet</u>	25x 188 cm 9.8x78.7 in
<u>Length, wristwarmers</u>	25 cm 9.8 in

**ALTERNATIVE YARN: Eco Alpaca (100 % alpaca), 100 g skein, Viking Odin (100% wool, superwash), 100 g ball.**

### **HAT**

#### **Eco Alpaca**

Black, 404 1 skein  
Off-White, 402 1 skein

#### **Fox4You**

clr 102 1 ball

### **NECKLET**

#### **Eco Alpaca**

Black, 404 3 skeins  
Off-White, 402 2 skeins

#### **Fox4You**

clr 102 2 balls

### **PULSVARMERE**

#### **Eco Alpaca**

Black, 404 1 skein  
Off-White, 402 1 skein

#### **Fox4You**

clr 102 1 ball

### **WHOLE SET:**

#### **Eco Alpaca**

Black, 404 4 skeins  
Off-White, 402 2 skeins

#### **Fox4you**

clr 102 5 balls

Circular needle and double pointed needles size 4½, 5 and 8 mm – US 7, 8 and 11 – UK/Canadian 7, 6 and 0

**Gauge Eco Alpaca:** 18 sts = approx. 10 cm/4 in over St st using needles size 5 mm. **Fox4You:** 11

sts = approx. 10 cm/4 in over St st using needles size 8 mm. **Check your gauge to ensure success.**

### **FOX4YOU:**

Work with double yarn min 3 sts when you start a new ball of yarn. You don't need to weave in yarn ends, and you can cut off yarn ends quite close to the sts.

### **HAT**

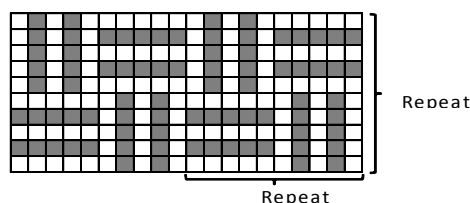
Using needles size 8 mm and Fox4you, cast on 55 sts. Work in rnds 5 cm/2 in in St st. Change to needles size 5 mm and black Eco Alpaca. Knit 1 rnd, and inc evenly across number of sts to be 90 sts. Cont working in patt as charted. When work measures approx 21 cm/8.3 in, measured from cast on edge, ending with a complete patt report, knit all sts tog in pairs. Break yarn, thread through rem sts, pull tightly, and weave in on WS.

### **Pompon**

Note: Knit pretty tightly so that sts don't fall off from needles

Using needles size 8mm and Fox4you, cast on 4 sts. Knit 1 rnd, and inc number of sts to be 8 sts. Next rnd: Inc number of sts to be 16 sts, and divide sts evenly on 4 dpn. Knit 1 rnd. Next rnd: Inc number of sts to be 24 sts. Knit 4 rnds. Next rnd: Dec number of sts to be 16 sts. Knit 1 rnd. Next rnd: Dec number of sts to be 8 sts. Last rnd: Knit all sts tog in pairs = 4 sts. Break yarn, and thread through rem sts.

Fasten on top of the hat.



□ = dark pink for child, black for adult  
■ = light pink for child, off-white for adult

### **NECKLET**

Using needles size 4½ mm and black Eco Alpaca, cast on 330 sts. Work in rnds 5 cm/2 in in K1tbl,P1 rib. Change to needles size 5 mm. Cont working in patt as charted. When work measures 20 cm/7.9 in, change to needles size 8 mm and Fox4You. Knit 1 rnd, and dec evenly across number of sts to be 200 sts. Work 5 cm/2 in in St st. Bind off.

Weave in all ends on WS.  
Necklet is worn on in double, twisted around neck as number eight.

## WRISTWARMERS

Using needles size 8 mm and Fox4you, cast on 24 sts. Work in rnds 6 cm/2.4 in in Garter st. Change to needles size 4½ mm and Eco Alpaca. Cont working in K1,P1 in rib, and inc evenly across 1<sup>st</sup> rnd number of sts to be 32 sts. When rib measures 6 cm/2.4 in, change to needles size 5 mm. Knit 1 rnd, and inc evenly across number of sts to be 40 sts. Cont working in patt as charted. When work measures approx. 23 cm/9.1 in, leave sts on holder for thumb opening as foll: place markers each side, 20 sts for both sides. K1, slip 4 sts on holder, cast on 4 sts, and cont working in patt over rem sts.

Work 2 cm/0.8 in more in patt. Knit 1 rnd, and dec evenly across number of sts to be 32 sts. Work in rnds 3 cm/1.2 in in K1tbl,P1 rib. Bind off.

Thumb, Eco Alpaca: Slip 4 sts from holder on needles size 4½ mm, and pick or knit up 6 sts from the upper edge of the thumb opening. Divide sts on 3 dpn. Work 5 rnds in K1tbl,P1 rib. Bind off.

Weave in all ends on WS.

Fold fur edge in double on RS.

Work same for the other wristwarmer, with thumb on the opposite side.

Brush the fur. You can also spray the fur slightly with water, and pick it up with your fingers. Dry clean only on all garments knitted from Fox4you.

---

## Fox4you

**Hat with ear flaps** **1209-4**

<b>Size:</b>	<b>Woman</b>
<b>Circumference:</b> approx.	50 cm
	19.7 in

**ALTERNATIVE YARN: Viking Eco Alpaca (100% alpaca), 100 g skein. Viking Odin (100% wool, superwash), 100 g ball.**

## HAT

Fox4you 706 4 balls  
Eco Alpaca, 404 (rest black wool yarn)

Circular needle and double pointed needles size 8 mm – US 11 – UK/Canadian 0

**Gauge:** 11 sts = approx. 10 cm/4 in over St st using needles size 8 mm. **Check your gauge to ensure success.**

### **Fox4you**

Work with double yarn min 3 sts when you start a new ball of yarn. You don't need to weave in yarn ends, and you can cut off yarn ends quite close to the sts.

## HAT

**Beg from right ear flap:** Using needles size 8 mm, cast on 6 sts. Work back and forth in St st, and inc 1 st at each edge every 2<sup>nd</sup> row until you have 10 sts on a row. When ear flap measures approx. 6 cm/2.4 in, leave work aside, and knit the other ear flap. Cast on 10 sts between ear flaps = mid back. Cont working back and forth in Garter st until work measures 12 cm/4.7 in, measured from cast-on edge of the earflaps. Leave work aside.

**Brim:** Using needles size 8 mm, cast on 18 sts. Work back and forth approx. 7-8 cm/2.8-3.1 in in Garter st.

Slip all sts on same circular needle size 8 (= 48 sts). Cont working in rnds until work measures approx. 23 cm/9.1 in mid back (measured from cast-on edge between ear flaps). Beg crown dec: \*K4,K2tog\*, rep \*-\* across the rnd. Knit 1 rnd without dec. Rep dec every 2<sup>nd</sup> rnd with 1st less between each dec until 16 sts rem. Knit 1 rnd. Next rnd: Knit all sts tog in pairs = 8 sts rem. Break yarn, thread through rem sts, pull tightly, and weave in on WS.

Fold front brim on RS, and fasten with few sts. Twist 2, approx. 30 cm/11.8 in long cords with black Eco Alpaca (or rest yarn), and sew to each ear flap.

Brush the fur. You can also spray the fur slightly with water, and pick it up with your fingers. Dry clean only on all garments knitted from Fox4you.

---

## Viking Eco Alpaca - Fox4you

**Hat, necklet and mittens 1209-5**

Size	Woman
Circumference	50 cm 19,7 in
Circumference, necklet	68 cm 26,8 in

**ALTERNATIVE YARN: Eco Alpaca (100 % alpaca), 100 g skein, Viking Odin (100% wool, superwash), 100 g ball**

### HAT

#### **Eco Alpaca**

Off-White 402 1 skein  
Fox4you, 702 1 ball

### NECKLET

#### **Eco Alpaca**

Off-White 402 2 skeins  
Fox4you, 702 3 balls

### MITTENS

#### **Eco Alpaca**

Off-White, 402 1 skein  
Fox4you, 702 1 ball

### WHOLE SET

#### **Eco Alpaca**

Off-White, 402 3 skeins  
Fox4you, 702 5 balls

Circular needles and double pointed needles size 4½, 5 and 8 mm – US 7, 8 and 11 – UK/Canadian 7, 6 and 0

### **Gauge:**

**Eco Alpaca:** 18 sts = approx. 10 cm/4 in over St st using needles size 5 mm.

**Fox4you:** 11 sts = approx. 10 cm/4 in over St st using needles size 8 mm. **Check your gauge to ensure success.**

### **Fox4you**

Work with double yarn min 3 sts when you start a new ball of yarn. You don't need to weave in yarn

ends, and you can cut off yarn ends quite close to the sts.

### **HAT**

Using needles size 8 mm and Fox4you, cast on 55 sts. Work in rnds 10 cm/4 in in St st. Change to needles size 5 mm and Eco Alpaca. Knit 1 rnd. Inc evenly across 2<sup>nd</sup> rnd number of sts to be 96 sts. Cont working in patt as charted. When work measures approx. 20 cm/7.9 in, dec 1 st over each purl panel. Rep dec every 3<sup>rd</sup> rnd 2 times. Work 1 rnd without dec. Next rnd: Knit all sts tog in pairs = 12 sts rem. Break yarn, thread through rem sts, pull tightly, and weave in on WS.

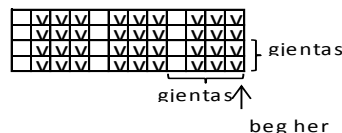
### **Pompon**

Note: Knit pretty tightly so that sts don't fall off from needles.

Using needles size 8 mm and Fox4you, cast on 4 sts. Knit 1 rnd, and inc number of sts to be 8 sts. Next rnd: Inc number of sts to be 16 sts, and divide sts evenly on 4 dpn. Knit 1 rnd. Next rnd: Inc number of sts to be 24 sts. Knit 4 rnds. Next rnds: Dec number of sts to be 16 sts. Knit 1 rnd. Next rnd: Dec number of sts to be 8 sts. Last rnd: Knit all sts tog in pairs = 4 sts. Break yarn, and thread through rem sts.

Fasten pompon on top of the hat.

All garments knitted from Fox4you are washable.



☐ = rett på retten, på vrangen løftes m løst av med tråden foran arb

**NB: Når arb strikkes kun fra retten. skal m løftes av med tråden bak på hver 2. omg**

☑ = vrang på retten, rett på vrangen

gjentas = repeat

beg her = beg here

rett på retten... = K on RS, WS: sl 1 st with yarn fw

**Note: When worked in rnds, sl 1 st with yarn bw every 2<sup>nd</sup> rnd**

vrang på retten... = P on RS, K on RS

### **NECKLET**

Using needles size 8 mm and Fox4you, cast on 88 sts. Work in rnds 5 cm/2 in in St st. Change to needles size 5 mm and Eco Alpaca. Knit 2 rnds,

and inc evenly across 2<sup>nd</sup> rnd number of sts to be 144 sts. Work in patt as charted. When work measures 25 cm/9.8 in, dec evenly across number of sts to be 88 sts. Change to needles size 8 mm and Fox4you. Cont working 5 cm/2in in St st. Bind off. Weave in all ends on WS.

All garments knitted from Fox4you are washable.

## MITTENS

Using needles size 4½ mm and Eco Alpaca, cast on 36 sts. Work in rnds 5 cm/2 in in K1,P1 rib. Change to needles size 5 mm. Work 3 cm/1.2 in St st. Place markers each side, 18 sts for each side.

**Thumb opening:** Beg from a sidemarker, K1, slip 5 sts on holder, cast on 5 sts, and work until the end of the rnd.

Cont working in St st until work measures 8 cm/3.1 in, measured from thumb opening, or approx. 3 cm/1.2 in less than the total length. Dec as foll: K2togtbl before a sidemarker, and K2tog after a sidemarker. Rep dec at each side every rnd until 4 sts rem. Break yarn, and thread through rem sts.

**Thumb:** Slip 5 sts from holder on needles size 5 mm, and pick up 7 sts from the upper edge of thumb opening. Divide sts on 3 dpn. Work in rnds in St st until thumb measures approx. 6 cm/2.4 in (or desired length). Next rnd: Knit all sts tog in pairs. Break yarn, and thread through rem sts. Weave in all ends on WS.

Using needles size 8 mm and Fox4you, pick up and knit up 22 sts along ribbed edge. Work in rnds 8 cm/3.1 in in St st (or 1 ball for both mittens). Bind off.

Work same for the other mitten, with thumb on the opposite side.

Weave in all ends on WS.

Dry clean only on all garments knitted from Fox4you.

**Circumference, necklet**

## *Viking Eco Alpaca - Fox4you*

**Hat and mittens** **1209-6**

<b>Size:</b>	<b>Woman</b>
Circumference: approx.	50 cm

**ALTERNATIVE YARN: Viking Eco Alpaca (100% alpaca), 100 g skein. Viking Odin (100% wool, superwash), 100 g ball.**

## HAT AND MITTENS

Eco Alpaca, Beige 407	1 skein
Fox4you, 792	4 balls

Circular needle size 8 mm – US 11 – UK/Canadian 0, and double pointed needles size 5 and 8 mm – US 8 and 11 – UK/Canadian 6 and 0

**Gauge, Eco Alpaca:** 18 sts = approx. 10 cm/4 in over St st using needles size 5 mm. **Gauge, Fox4you:** 11 sts = approx. 10 cm/4 in over St st using needles size 8 mm. **Check your gauge to ensure success.**

### **Fox4you**

Work with double yarn min 3 sts when you start a new ball of yarn. You don't need to weave in yarn ends, and yarn ends can be cut off quite close to the sts.

## HAT

**Beg from right ear flap:** Using needles size 8 mm and Fox4you, cast on 6 sts. Work back and forth in St st, and inc 1 st at each edge every 2<sup>nd</sup> row until you have 10 sts on a row. Work until ear flap measures approx. 6 cm/2.4 in. Leave work aside, and knit the other ear flap. Cast on 10 sts between ear flaps = mid back. Cont working back and forth in St st until work measures approx. 12 cm/4.7 in, measured from cast-on edge of the ear flaps. Leave work aside.

**Brim:** Using needles size 8 mm, cast on 18 sts. Work back and forth in Garter st until work measures approx. 7-8 cm/2.4-3.1 in.

Slip all sts on same circular needle size 8 (= 48 sts). Work in rnds in St st until work measures approx. 23 cm mid back (measured from cast-on edge between ear flaps). Beg crown dec: \*K4, K2tog\*, rep \*-\* across the rnd. Knit 1 rnd. Rep dec every 2<sup>nd</sup> rnd with 1 st less between each dec until 16 sts rem. Knit 1 rnd. Next rnd: Knit all sts tog in pairs = 8 sts rem. Break yarn, thread through rem sts, pull tightly, and weave in on WS.

Fold brim on RS, and fasten with few sts.

Brush the fur. You can also spray the fur slightly

with water, and pick it up with your fingers.  
All garments knitted from Fox4you are washable.

## MITTENS

Using dpn size 8 mm and Fox4you, cast on 20 sts. Work 6 rnds in St st. Turn work inside out.

Change to needles size 5 mm and Eco Alpaca.

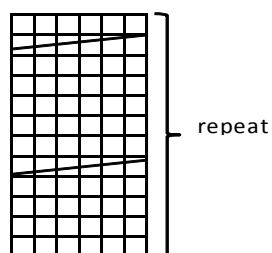
Knit 1 rnd, and inc evenly across number of sts to be 36 sts. Place markers each side, 18 sts for each side. Cont working in St st and cable patt over 6 sts (mid over top). Cont until work measures approx. 10 cm/4 in, measured from cast-on edge.

**Thumb gusset:** Beg from a sidemarker, K2, M1, K1, M1 = 3 sts. Cont working in rnds same as before, and inc for gusset ever 3<sup>rd</sup> rnd until there is 11 sts for the gusset. Place gusset sts on holder, and inc 1 st. Cont working in rnds in St st (and cable mid over top) until work measures approx. 10 cm/4 in, measured from thumb gusset edge (or desired length). Beg dec at each side: K2togtbl before a marker. Rep dec every 2<sup>nd</sup> rnd 3 times (Note! Cont working cable patt as long as there is enough sts for it). Rep now dec **every** rnd until 4 sts rem. Break yarn, thread through rem sts, pull tightly, and weave in on WS.

**Thumb:** Slip sts from holder on needles size 5 mm, and knit or pick up 1 st from upper edge from upper edge of the gusset = 12 sts. Work in St st until thumb measures approx. 6 cm/2.4 in (or desired length). Next rnd: Knit all sts tog in pairs = 6 sts rem. Break yarn, thread through rem sts, pull tightly, and weave in on WS.

Work same for the other mitten, with thumb on the opposite side.

Dry clean only on all garments knitted from Fox4you.



□ = knit

▬ = sl 3 sts on cn, hold to front, K3, knit sts from cn

## Viking Eco Alpaca – Fox4you

### Muff

1209-7

**Size:** **Woman**

**ALTERNATIVE YARN: Viking Eco Alpaca (100% alpaca), 100 g skein. Viking Odin (100% wool, superwash), 100 g ball.**

Eco alpaca, Off-White 402

1 skein

Fox4you, Brown 792

2 balls

Circular needle and double pointed needles size 4½ mm for Eco Alpaca, and needles size 8 mm for Fox4you.

**Gauge, Fox4you:** 11 sts = approx. 10 cm/4 in over St st using needles size 8 mm.

**Gauge Eco Alpaca:** 18 sts = approx. 10 cm/4 in over St st using needles size 4½ mm. **Check your gauge to ensure success.**

### Fox4you

Work with double yarn min. 3 sts when you start a new ball of yarn. You don't need to weave in yarn ends, and you can cut off yarn ends quite close to the sts.

### MUFF

Using needles size 4½ mm and Eco Alpaca, cast on 72 sts. Work in rnds 6 cm/2.4 in in K2,P2 rib. Change to needles size 8 mm and Fox4you. Next rnd: Knit all sts tog in pairs 1 = 36 sts. Cont working until you have finished both alls of yarn. Change to needles size 4½ mm and Eco Alpaca. Knit 1 rnd, and inc 1 st to each st across the rnd = 72 sts. Work in rnds 6 cm/2.4 in in rib. Bind off in rib.

Fold ribbed edges in double, and sew on WS, leaving openings for threading in cord. Use sewing thread.

### Cord around neck

Plait a cord (with 4 lengths of yarn for each 3 cords), approx. 200-220 cm/78.8-86.6 in long. Thread through both edges of the muff, and tie the ends mid back.

Brush the fur. You can also spray the fur slightly with water, and pick it up with your fingers.

Dry clean only on all garments knitted from Fox4you.



## Viking Eco Alpaca - Fox4you Mittens and scarf 1209-8

**Size:** **Woman**

**ALTERNATIVE YARN:** Viking Eco Alpaca (100% alpaca), 100 g skein. Viking Odin (100% wool, superwash), 100 g ball.

### MITTENS AND SCARF

Eco Alpaca, Beige 407 4 skeins  
Fox4you, 792 2 balls

Circular needle size 5 mm – US 8 – UK/Canadian 6 for Eco Alpaca, and needles size 8 mm – US 11 – UK/Canadian 0 for Fox4you + crochet hook size 6 mm – US J/10 – UK/Canadian 4

**Gauge, Fox4you:** 11 sts = approx. 10 cm/4 in over St st using needles size 8 mm.

**Gauge, Eco Alpaca:** 18 sts = approx. 10 cm/4 in over St st using needles size 5 mm **Check your gauge to ensure success.**

### MITTENS

Using dpn size 8 mm and Fox4you, cast on 20 sts. Work 6 rnds in St st. Turn work inside out.

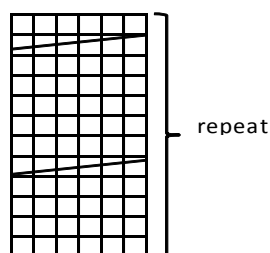
Change to needles size 5 mm and Eco Alpaca. Knit 1 rnd, and inc evenly across number of sts to be 36 sts. Place markers each side, 18 sts for each side. Cont working in St st and cable patt over 6 sts (mid over top). Cont until work measures approx. 10 cm/4 in, measured from cast-on edge.

**Thumb gusset:** Beg from a sidemarker, K2, M1, K1, M1 = 3 sts. Cont working in rnds same as before, and inc for gusset ever 3<sup>rd</sup> rnd until there is 11 sts for the gusset. Place gusset sts on holder, and inc 1 st. Cont working in rnds in St st (and cable mid over top) until work measures approx. 10 cm/4 in, measured from thumb gusset edge (or desired length). Beg dec at each side: K2togtbl before a marker. Rep dec every 2<sup>nd</sup> rnd 3 times (Note! Cont working cable patt as long as there is enough sts for it). Rep now dec **every** rnd until 4 sts rem. Break yarn, thread through rem sts, pull tightly, and weave in on WS.

**Thumb:** Slip sts from holder on needles size 5 mm, and knit or pick up 1 st from upper edge from upper edge of the gusset = 12 sts. Work in St st until thumb measures approx. 6 cm/2.4 in (or

desired length). Next rnd: Knit all sts tog in pairs = 6 sts rem. Break yarn, thread through rem sts, pull tightly, and weave in on WS.

Work same for the other mitten, with thumb on the opposite side.



□ = knit

= sl 3 sts on cn, hold to front, K3, knit sts from cn

### SCARF

**Seed st:**

**1<sup>st</sup> row:** K1, P1

**2<sup>nd</sup> row:** Knit all purl-sts, and purl all knit-sts. Rep 2<sup>nd</sup> row.

Using needles size 5 mm and Eco Alpaca, cast on 36 sts. Work as foll: Seed st over 3 sts, cable patt over 6 sts, St st over 6 sts, cable patt over 6 sts, St st over 6 sts, cable patt over 6 sts, Seed st over 3 sts. Cont working back and forth as established until work measures approx. 180 cm/70.9 in. Bind off.

Using crochet hook size 6 mm and Fox4you, crochet from WS 1 sc-rnd around the edges. Dry clean only on all garments knitted from Fox4you.

## Viking Eco Alpaca - Fox4you Hat, mittens and legwarmers 1209-9

**Size** **Woman**

Circumference, hat	50cm
	19.7 in
Length, legwarmers	38 cm
	15 in

**ALTERNATIVE YARN:** Eco Alpaca (100% alpaca), 100 g skein, Viking Odin (100% wool, superwash), 100 g ball

### HAT

**Eco Alpaca**

Violet, 468

Grey, 413

**Fox4you, 512**

### **LEGWARMERS**

**Eco Alpaca**

Violet 468

Grey, 413

**Fox4you, 512**

### **MITTENS**

**Eco Alpaca**

Violet, 468

Grey, 413

**Fox4you, 512**

### **WHOLE SET:**

**Eco Alpaca**

Violet, 468

Grey, 413

**Fox4you, 512**

1 skein

1 skein

1 ball

1 skein

1 skein

1 ball

1 skein

1 skein

1 ball

3 skeins

2 skeins

1 ball

Circular needle and double pointed needles size 4½, 5 and 8 mm – US 7, 8 and 11 – UK/Canadian 7, 6 and 0 + crochet hook size 6 mm – US J/10 – UK/Canadian 4

#### **Gauge:**

**Eco Alpaca:** 18 sts = approx. 10 cm/4 in over St st using needles size 5 mm. **Check your gauge to ensure success.**

### **BRAMBLE STITCH PATTERN**

**(Note: When bramble st patt is worked in rnds, turn work inside out, before you change to another patt).**

**1<sup>st</sup> rnd:** Purl

**2<sup>nd</sup> rnd:** \*K1, P1, K1 all into same st, P3tog\*, rep \*-\* across the rnd.

**3<sup>rd</sup> rnd:** Purl

**4<sup>th</sup> rnd:** \*P3 tog, K1,P1, K1 into same st (same as 2<sup>nd</sup> rnd)\*, rep \*-\* across the rnd.

Rep 1<sup>st</sup>-4<sup>th</sup> rnd until work measures approx. 15 cm/5.9 in, measured from cast-on edge.

#### **Seed st:**

**1<sup>st</sup> rnd:** K1, P1,

**2<sup>nd</sup> rnd:** Knit al purl-sts, purl all knit-sts.

Rep 2<sup>nd</sup> rnd.

#### **HAT**

Using needles size 4½ mm and grey Eco Alpaca, cast on 89 sts. Work 3 rnds in Seed st. Purl 1 rnd, and inc evenly across number of sts to be 96 sts. Cont working in Bramble st patt until work

measures 6 cm/2.4 in. Turn work inside out.

Change to needles size 5 mm, and violet yarn.

Place 4 markers across the rnd, with 24 sts between each marker. Work 2 cm/0.8 in St st. Inc 1 st both sides of each marker = 8 sts. Rep inc every 2 cm/0.8 in 2 times = 120 sts. Cont working in St st until work measures 19 cm/7.5 in. Dec 1 st both sides of each marker every 2 cm/0.8 in altog. 3 times = 96 sts. When work measures 23 cm/9.1 in, beg crown dec: \*K6, K2tog\*, rep \*-\* across the rnd. Next rnd: \*K5, K2tog\*, rep \*-\* across the rnd. Rep dec every rnd, with 1 st less between each dec until 24 sts rem. Knit all sts tog in pairs until 6 sts rem. Break yarn, thread through rem sts, pull tightly, and weave in on WS

#### **Pompon**

**Note:** Knit pretty tightly so that sts don't fall off from needles.

Using needles size 8 mm and Fox4You, cast on 4 sts. Knit 1 rnd, and inc number of sts to be 8 sts. Next rnd: Inc number of sts to be 16 sts, and divide sts evenly on 4 dpn. Knit 1 rnd. Next rnd: Inc number of sts to be 24 sts. Knit 4 rnds. Next rnd: Dec number of sts to be 16 sts. Knit 1 rnd. Next rnd: Dec number of sts to be 8 sts. Last rnd: Knit all sts tog in pairs = 4 sts. Break yarn, and thread through rem sts.

Fasten pompon on top of the hat.

Using crochet hook size 6 mm and Fox4you, crochet from WS 1 sc-rnd across the edge.

Weave in all ends on WS.

All garments knitted from Fox4you are washable.

#### **MITTENS**

Using needles size 4½ mm and grey Eco Alpaca, cast on 37 sts. Work 3 rnds in Seed st. Knit 1 rnd, and inc evenly across number of sts to be 40 sts. Cont working in Bramble st patt until work measures 9 cm/3.5 in. Turn work inside out. Change to needles size 5 mm. Work 5 cm/2 in in St st for 5 cm/2 in. **Thumb opening:** Place markers each side, 20 sts for each side. K1, slip 5 sts on holder, cast on 5 sts, work until the end of the rnd. Cont working in St st until work measures approx. 24 cm/9.4 in, or 3 cm/1.2 in less than total length, beg dec: K2togtbl before a marker, and K2tog after a marker. Rep dec each side every rnd until 4 sts rem. Break yarn, thread through rem sts.

**Thumb:** Slip 5 sts from holder on needles size 5 mm, and pick up 7 sts from upper edge of the upper edge of the thumb opening. Divide sts on 3

dpn. Work in rnds in St st until thumb measures approx. 6 cm/2.4 in (or desired length). Knit all sts tog in pairs. Break yarn, and thread through rem sts.

Weave in all ends on WS.

Using crochet hook size 6 mm and Fox4you, crochet from WS 1 sc-rnd across the edge.

Weave in all ends on WS.

Work same for the other mitten, with thumb on the opposite side.

All garments knitted from Fox4you are washable.

## LEGWARMERS

Using needles size 4½ mm and grey Eco Alpaca, cast on 71 sts. Work 3 rnds in Seed st. Purl 1 rnd, and inc evenly across number of sts to be 72 sts.

Cont working in Bramble st patt until work measures 10 cm/4 in. Change to needles size 5 mm and violet yarn. Work in St st until work measures 30 cm/11.8 in, or 4 cm/1.6 in less than desired. Dec evenly across number of sts to be 51 sts. Change to needles size 4 ½ mm. Work 3-4 cm/1.2-1.6 in in Seed st. Bind off.

Using crochet hook size 6 mm and Fox4you, crochet from WS 1 sc-rnd to the upper edge of the legwarmer (with Bramble st patt).

Weave in all ends on WS.

Work same for the other legwarmer.

Dry clean only on all garments knitted from Fox4you.

## Viking Eco Alpaca - Fox4you

Hat, scarf, mittens and

legwarmers

1209-10

Size	Child
Circumference, hat	47 cm 18.5 in
Length, scarf	130 cm 51.2 in
Length, legwarmers	33 cm 13 in

**ALTERNATIVE YARN: Eco Alpaca (100 % alpaca), 100 g skein, Viking Odin (100% wool, superwash), 100 g ball**

## HAT

Eco Alpaca

Light Violet, 467

2 skeins

Violet, 468

1 skein

Light Pink, 466

1 skein

**Fox4you**, 702

1 ball

## SCARF

**Eco Alpaca**

Light Violet, 467

2 skeins

Violet, 468

1 skein

Light Pink, 466

2 skeins

**Fox4you**, 702

1 ball

## MITTENS AND LEGWARMERS

**Eco Alpaca**

Light Violet, 467

2 skeins

Violet, 468

1 skein

Light Pink, 466

1 skein

Or rest yarn from hat

**Fox4you**, 702

2 balls

## WHOLE SET:

**Eco Alpaca**

Light Violet, 467

4 skeins

Violet, 468

1 skein

Light Pink, 466

2 skeins

**Fox4you**, 702

3 balls

Circular needles and double pointed needles size 4½, 5 and 8 mm

+ 1 crystal pearls, Panduro

## Gauge:

**Eco Alpaca:** 18 sts = approx. 10 cm/4 in over St st using needles size 5 mm.

**Fox4you:** 11 sts = approx. 10 cm/4 in over St st using needles size 8 mm. **Check your gauge to ensure success.**

## FOX4YOU:

Work with double yarn min 3 sts when you start a new ball of yarn. You don't need to weave in yarn ends, and you can cut off yarn ends quite close to the sts.

## HAT

**Beg with right ear flap :** Using needles size 8 mm and Fox4you, cast on 7 sts. Work back and forth in Garter st, and inc 1 st at each edge every 2<sup>nd</sup> row until you have 13 sts on a row. Work until ear flap measures approx. 9 cm/3.5 in. Leave work aside, and work same for left ear flap.

Cont working in rnds as foll: Work sts for left ear flap, cast on 17 sts = front, work sts for right ear flap, cast on 8 sts = back = 51 sts. Work 5 cm/2 in rnds in St st. Change to needles size 5 mm and light violet Eco Alpaca. Knit 1 rnd, and inc

evenly across number of sts to be 84 sts. Beg rnd mid back, and work in patt as charted.

When patt is ready, cont working with light violet yarn. When work measures approx. 19 cm/7.5 in, measured mid front, beg crown dec: \*K4, K2tog\*, rep \*-\* across the rnd. Knit 1 rnd. Next rnd: \*K3, K2tog\*, rep \*-\* across the rnd. Knit 1 rnd. Rep dec every 2<sup>nd</sup> rnd with 1 st less between each dec until 28 sts rem. Knit over next 2 rnds all sts tog in pairs until 7 sts rem. Break yarn, thread through rem sts, pull tightly, and weave in on WS. Weave in all ends on WS.

### Pompon

Note: Knit pretty tightly so that sts don't fall off from needles.

Using needles size 8 mm and Fox4you, cast on 4 sts. Knit 1 rnd, and inc number of sts to be 8 sts. Next rnd: Inc number of sts to be 16 sts, and divide sts evenly on 4 dpn. Knit 1 rnd. Next rnd: Inc number of sts to be 24 sts. Knit 4 rnds. Next rnd: Dec number of sts to be 16 sts. Knit 1 rnd. Next rnd: Dec number of sts to be 8 sts. Last rnd: Knit all sts tog in pairs = 4 sts. Break yarn, and thread through rem sts.

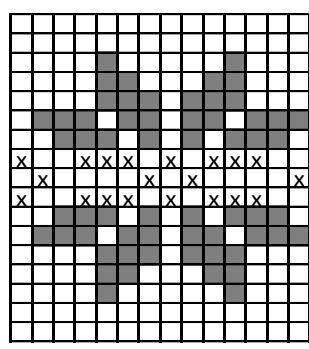
Fasten pompon on top of the hat.

Weave in all ends on WS.

Sew a crystal pearl mid of each star patt.

Draw approx. 1 m/39.4 in long 3-doubled length of Eco Alpaca through each ear flap, plait yarns.

All garments knitted from Fox4you are washable.



Repeat

□ = light violet

■ = violet

⊠ = light pink

↑ beg here

### SCARF

Note: Since scarf is worked in rnds, it's important to weave in each yarn end at every clr change.

Using needles size 5 mm and light violet Eco Alpaca, cast on 8 sts. Divide sts on 4 dpn. Place a

marker beg of rnd. Work in rnds in St st, and inc 1 st beg and end of every 4<sup>th</sup> rnd until you have 56 sts on a rnd. Work 5 cm/2 in in St st. Work patt as charted. Cont working with light pink yarn until work measures approx. 86-106 cm/33.9-41.6 in, or 24 cm/9.4 in less than desired length. Work patt as charted. Work 5 cm/2 in in St st with light violet. Dec 1 st beg and end of every 4<sup>th</sup> rnd until 8 sts rem. Break yarn, and thread through rem sts. Knit 2 fur pompons, and make 2 pompons in each clr in different sizes.

Sew 1 pompon in each clr + 1 fur pompon to each end of the scarf.

### LEGWARMERS

Using needles size 8mm and Fox4you, cast on 34 sts. Work in rnds 8 cm/3.1 in in St st. Change to needles size 5 mm and light violet Eco Alpaca.

Cont working in St st, and inc evenly across first rnd number of sts to be 56 sts. When work measures approx. 22 cm/8.7 in in patt as charted.

Cont working in St st with light violet yarn until work measures 7 cm/2.8 in less than total length, or desired length. Change to dark violet yarn. Knit 1 rnd, and after that 7 cm/2.8 in in K1tbl,P1 rib.

Bind off. Weave in all ends on WS.

Work same for the other legwarmer.

All garments knitted from Fox4you are washable.

### MITTENS

Using needles size 4½ mm and dark violet Eco Alpaca, cast on 36 sts. Work in rnds 5 cm/2 in in K1,P1 rib. Change to needles size 5 mm and light violet yarn. Cont working 5 cm/2 in in St st. Place markers each side, 18 sts for both sides.

**Thumb opening:** Beg from sidemarker, K1, slip 5 sts on holder, cast on 4 sts, work until the end of rnd. Cont working in St st until work measures 8 cm/3.1 in, measured from thumb opening, or 3 cm/1.2 in less than total length. Beg dec as foll: K2togtbl before a marker, and K2tog after a marker. Rep dec st each side every rnd until 4 sts rem. Break yarn, and thread through rem sts.

**Thumb:** Slip 5 sts from holder on needles size 5 mm, and pick up 7 sts from upper edge of thumb opening. Divide sts on 3 dpn. Work in rnds in St st until thumb measures approx. 5 cm/2 in (or desired length). Knit all sts tog in pairs. Break yarn, and thread through rem sts.

Weave in all ends on WS.

Using needles size 8 mm and Fox4you, pick or knit up approx. 22 sts along ribbed edge. Work 8 cm/3.1 in (or desired length) in St st. Bind off. Work same for the other mitten, with thumb on the opposite side.  
Weave in all ends on WS.  
Embroider star as charted mid front on each mitten.  
Sew a crystal pearl mid both stars.  
Dry clean only on all garments knitted from Fox4you.

## ***Viking Eco Alpaca – Fox4you*** **Necklet with hood** **and mittens** **1209-11**

<b>Size</b>	<b>2/4</b>	<b>6/8 yrs</b>
Circumference	43	46 cm
	16.9	18.1 in

**ALTERNATIVE YARN: Eco Alpaca (100 % alpaca), 100 g skein, Viking Odin (100% wool, superwash), 100 g ball**

### **NECKLET WITH HOOD**

#### **Eco Alpaca**

Off-White, 402 2 2 skeins

**Fox4you**, 702 1 1 ball

#### **MITTENS**

#### **Eco Alpaca**

Off-White, 402 1 1 skein

**Fox4you**, 702 1 1 ball

#### **HELE SETTET**

#### **Eco Alpaca**

Off-White, 402 3 3 skeins

**Fox4you**, 702 2 3 balls

Circular needle and double pointed needles size 4½, 5 and 8 mm – US 7, 8 and 11 – UK/Canadian 7, 6 and 0 + 4 buttons (necklet with hood)

#### **Gauge:**

**Eco Alpaca:** 18 sts = approx. 10 cm/4 in over St st using needles size 5 mm.

**Fox4you:** 11 sts = approx. 10 cm/4 in over St st using needles size 8 mm. **Check your gauge to ensure success.**

#### **Fox4you**

Work in double yarn min. 3 sts when you start a new ball of yarn. You don't need to weave in yarn

ends, and you can cut off yarn ends quite close to the sts.

### **NECKLET WITH HOOD**

Beg from lower edge.

Using needles size 8 mm and Fox4you, cast on 54-58 sts. Work back and forth 4 cm/1.6 in in Garter st. Change to needles size 4½ mm and Eco Alpaca. Knit 1 row, and inc evenly across number of sts to be 87-95 sts. Work back and forth 2 cm/0.8 in K1,P1 rib inside 8 Garter sts beg and end of the row. Change to needles 5 mm. Next row: Garter st over 3 sts, bind off 2 sts for buttonhole (= cast on next row 2 sts over the bound-off sts), work in rib until 8 sts rem, work rem sts in Garter st. Cont working in patt as charted inside Garter st edges, and make 3 more buttonholes on right front band, approx. 6-7 cm/2.4-2.8 in apart. When work measures approx. 22-25 cm/8.7-9.8 in, cont working in rib inside Garter st edges.

Bind off first and last 8 sts. Place a marker mid back. Cont working back and forth in St st inside first and last 6 rib sts. Inc 1st both sides of the marker, first after 2 cm/0.8 in, and after that every 5-6 cm/2-2.4 in altog 4 times. When work measures 17-20 cm/6.7-7.9 in, place 2 more markers mid back, with 11-13 sts between the markers = 5-6 sts both sides of the prev marker. Cont working in St st, and dec 1 st after 1<sup>st</sup> marker and before 2<sup>nd</sup> marker. Rep dec every 2<sup>nd</sup> row 5-6 times. When hood measures approx. 23-26 cm/9.1-10.2 in, divide work mid back, and place halves on holders. Join top seam.

Weave in all ends on WS.

#### **Pompon**

#### **Fur edge**

Using needles size 8 mm and Fox4you, pick or knit up approx. 50-58 sts along front edge of the hood. Work back and forth in Garter st until yarn is finished. Take care that there is enough yarn for binding off.. Bind off rather loosely.

If you wish, you can knit pompons and attach them to a cord threaded inside front edge,

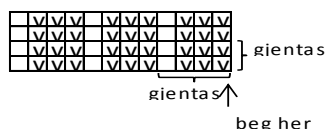
Knit 2 pompons as described earlier, Twist a cord using double Eco Alpaca. Place cord inside fur edge before folding it in double, and sewing on WS.

Fasten a pompon to each end of the cord.

(Note: There is no cord with pompons in the photo of the design).

Sew on buttons.

All garments knitted from Fox4you are washable.



☐ = rett på retten,  
på vrangen løftes m løst av med tråden foran arb

**NB: Når arb strikkes kun fra retten. skal m løftes av med tråden bak på hver 2. omg**

☑ = vrang på retten, rett på vrangen

gjentas = repeat

beg her = beg here

rett på retten... = K on RS, WS: sl 1 st with yarn fw

Note: When working in rnds, sl 1 st with yarn bw every 2<sup>nd</sup> rnd

vrang på retten... = P on RS, K on WS

## MITTENS

Using needles size 4½ mm and Eco Alpaca, cast on 28-32 sts. Work in rnds 3-4 cm/1.2-1.6 in in K1,P1 rib. Change to needles size 5 mm. Work 2-2cm/0.8-0.8 in in St st. Place markers each side, 14-16 sts for each side.

**Thumb opening:** Beg from sidemarker, K1, slip 3-4 sts on holder, cast on 3-4 sts, work until the end of the rnd. Cont working in St st until work measures 6-7 cm/2.4-2.8 in, measured from thumb opening, or 3 cm/1.2 in less than the total length. Beg dec as foll: K2togtbl before a marker, and K2tog after a marker. Rep dec at each side every rnd until 4 sts rem. Break yarn, and thread through rem sts.

**Thumb:** Slip 3-4 sts from holder on needles size 5 mm, and pick up 5-6 sts from the upper edge of the thumb opening. Work in rnds in St st until work measures approx. 3-4 cm/1.2-1.6 in (or desired length). Knit all sts tog in pairs. Break yarn, and thread through rem sts.

Weave in all sts on WS.

Using needles size 8 mm and Fox4you, pick or knit up approx. 18-20 sts along ribbed edge. Work in rnds 4-6 cm/1.6-2.4 in in St st (or 1 ball for both mittens). Bind off.

Weave in all ends on WS.

Work same for the other mitten, with thumb on the other side.

Dry clean only on all garments knitted from Fox4you.

## Viking Eco Alpaca – Fox4you

### Hat, necklet and wristwarmers

1209-12

Size	Child
Circumference, hat	44 cm 17.3 in
Necklet	20 x 150 cm 7.9 x 59.1 in
Length, wristwarmers	20cm 7.9 in

**ALTERNATIVE YARN: Eco Alpaca (100 % alpaca), 100 g skein, Viking Odin (100% wool, superwash), 100 g ball**

### HAT

#### Eco Alpaca

Dark Pink, 464 1 skein

Light Pink, 466 1 skein

Fox4You, 702 1 ball

### NECKLET

#### Eco Alpaca

Dark Pink, 464 2 skeins

Light Pink 466 2 skeins

Fox4You, 702 1 ball

### PULSVARMERE

#### Eco Alpaca

Dark Pink, 464 1 skein

Light Pink, 466 1 skein

Fox4You, 702 1 ball

### WHOLE SET:

#### Eco Alpaca

Dark Pink, 464 3 skeins

Light Pink 466 2 skeins

Fox4you, 702 5 balls

Circular needle and double pointed needles size 4½, 5 and 8 mm – US 7, 8 and 11 – UK/Canadian 7, 6 and 0

### Gauge:

**Eco Alpaca:** 18 sts = approx. 10 cm/4 in over St st using needles size 5 mm.

**Fox4You:** 11 sts = approx. 10 cm/4 in over St st using needles size 8 mm. **Check your gauge to ensure success.**

## **FOX4YOU:**

Work in double yarn min 3 sts when you start a new ball of yarn. You don't need to weave in yarn ends, and you can cut off yarn ends quite close to the sts.

## **HAT**

Beg with right ear flap: Using needles size 8 mm and Fox4You, cast on 6 sts. Work back and forth in Garter st, and inc 1 st at each edge every 2<sup>nd</sup> row until you have 12 sts on a row. When work measures approx. 8 cm/3.1 in, leave work aside, and knit same for left ear flap.

Cont working in rnds: Work over sts for left ear flap, cast on 16 sts = front, work over sts for right ear flap, cast on 8 sts = back = 48 sts. Work in rnds 5 cm/2 in in St st. Change to needles size 5 mm and dark pink Eco Alpaca. Knit 1 rnd, and inc evenly across number of sts to be 80 sts. Cont working in patt as charted. When work measures approx. 18 cm/7.1 in, measured from mid front, end with a complete patt report. Knit all sts tog in pairs across the rnd. Break yarn, thread through rem sts, pull tightly, and weave in on WS.

Weave in all ends on WS.

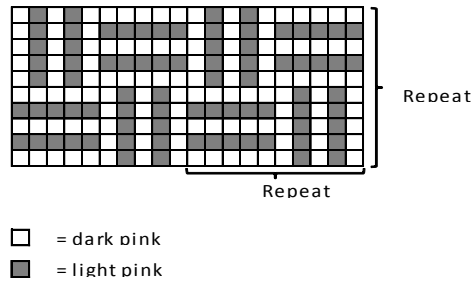
Knit a pompon.

## **Pompon**

Note: Knit pretty tightly so that sts don't fall off from needles.

Using needles size 8 mm and Fox4you, cast on 4 sts. Knit 1 rnd, and inc number of sts to be 8 sts. Next rnd: Inc number of sts to be 16 sts, and divide sts evenly on 4 dpn. Knit 1 rnd. Next rnd: Inc number of sts to be 24 sts. Knit 4 rnds. Next rnd: Dec number of sts to be 16 sts. Knit 1 rnd. Next rnd: Dec number of sts to be 8 sts. Last rnd: Knit all sts tog in pairs = 4sts. Break yarn, and thread through rem sts  
Fasten pompon on the top of the hat.

All garments knitted from Fox4you are washable.



## **NECKLET**

Using needles size 4½ mm and dark pink Eco Alpaca, cast on 270 sts. Work in rnds 4-5 cm/1.6-2 in in K1tbl,P1 rib. Change to needles size 5 mm. Cont working in patt as charted. When work measures 16 cm/6.3 in, change to needles size 8mm and Fox4You. Knit 1 rnd, and dec evenly across number of sts to be 165 sts. Work 4 cm/1.6 in in St st. Bind off

Weave in all ends on WS.

Necklet is worn on in double, twisted around neck as number eight.

All garments knitted from Fox4you are washable.

## **WRISTWARMERS**

Using needles size 8 mm and Fox4you, cast on 26 sts. Work in rnds 5-6 cm/2-2.4 in in Garter st. Change to needles size 4½ mm and dark pink Eco Alpaca. Cont working in K1,P1 rib, and inc evenly across 1<sup>st</sup> rnd number of sts to be 36 sts. When rib measures 5cm/2 in, change to needles size 5 mm. Knit 1 rnd, and evenly across number of sts to be 40 sts. Cont working in patt as charted until work measures 17 cm/6.7 in. Thumb opening: Place markers each side, 20 sts for each side. K1, slip 5 sts on holder, cast on 5 sts, cont working in patt until the end of the rnd.

Cont working in patt same as before until work measures approx. 18 cm/7.1in. Knit 1 rnd, and dec evenly across number of sts to be 36 sts. Work in rnds 2cm /0.8 in in K1tl,P1 rib. Bind off.

Thumb (Eco Alpaca, dark pink): Slip 5 sts from holder on needles size 4½ mm, and pick or knit up 7 sts from the upper edge of thumb opening. Divide sts on 3 dpn. Work 4 rnds in K1tbl,P1 rib. Bind off.

Weave in all ends owns.

Work same for the other wristwarmer, with thumb on the opposite side.

Dry clean only on all garments knitted from Fox4you.

# *Viking Eco Alpaca - Fox4you*

## Hat and scarf

1209-13

Size	2/4	6/8 yrs
Circumference, approx.	43	46 cm
	16.9	18.1 in

**ALTERNATIVE YARN: Eco Alpaca (100 % alpaca), 100 g skein, Viking Odin (100% wool, superwash), 100 g ball**

### Eco Alpaca

Off-White, 402	3	4 skeins
Cherry, 463	1	1 skein
Grey, 415	1	1 skein
<b>Fox4you</b> , 792	1	1 ball

Double pointed needles and circular needle size 4½, 5 and 8 mm – US 7, 8 and 11 – UK/Canadian 7, 6 and 0

**Gauge:** Eco Alpaca: 18 sts = approx. 10 cm/4 in over St st using needles size 5 mm.

**Fox4You**: 11 sts = approx. 10 cm/4 in over St st using needles size 8 mm. **Check your gauge to ensure success.**

### Fox4you

Work with double yarn min. 3 sts when you start a new ball of yarn. You don't need to weave in yarn ends, and you can cut off yarn ends quite close to the sts.

### Hat

Using needles size 4½ mm and off-white yarn, cast on 78-84 sts. Work in rnds 3-4 cm/1.2-1.6 in in K2,P2 rib. Change to needles size 5 mm and cherry clr yarn. Knit 1 rnd with cherry clr, 1 rnd with off-white, and 1 rnd with cherry clr yarn. Cont working in patt as charted. When work measures 23-25 cm/9.1-9.8 in, place markers each side, 39-42 sts for each side. Cont working in St st with off-white yarn, **and** dec 1 st both sides of the markers, K2togtbl before a marker, and K2tog after a marker. Rep dec every rnd. When 26-28 sts rem on a rnd, change to grey yarn. Cont dec until all sts are dec. Break yarn, and weave in on WS.

### Ears

Using needles size 8 mm and Fox4You, cast on 8 sts. Work back and forth 3 rows in Garter st. Bind off 1 st beg of each row 3 times = 5 sts. Bind off. Fold the tip of the hat downwards. Embroider eyes, and sew on ears (see photo). Attach the tip to the hat with few sts. All garments knitted from Fox4you are washable.

### SCARF

Note: Since scarf is worked in rnds, weave in ends every time you change clr.

Using needles size 4½ mm and grey Eco Alpaca, cast on 8 sts. Divide sts on 4 dpn. Work in rnds in St st, and inc 1 st beg and end of each needle. Rep inc every 4<sup>th</sup> rnd, **but** when work measures 4 cm/1.6 in, cont working with off-white yarn. When you have 48 sts on a rnd, knit 3 rnds, and inc evenly across next rnd number of sts to be 54 sts. Work 7 cm/2.8 in in St st. Change to cherry clr yarn. Work 1 rnd with cherry clr, 1 rnd with off-white, and 1 rnd with cherry clr yarn. Cont working in patt as charted. When work measures approx. 87-97 cm/34.3-38.2 in, or 23 cm/9.1 in less than the desired length, change to cherry clr yarn. Work 1 rnd with cherry clr, 1 rnd with off-white, and 1 rnd with cherry clr yarn. Change to off-white yarn. Work 7 cm/2.8 in in St st. Dec 6 sts evenly across the rnd = 48 sts. Work 3 rnds without dec. Dec 1 st beg and end of each needle = dec 8 sts every 4<sup>th</sup> rnd. End same way with grey yarn as in the beg, and rep dec until 8 sts rem. Break yarn, and thread through rem sts. Weave in all ends..

Dampen scarf slightly with a wet cloth.

Embroider eyes to each end of the scarf.

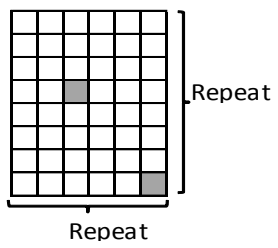
### Ears

Knit 4 ears, same as for hat.

Sew on ears to each end of the scarf.

Dry clean only on all garments knitted from Fox4you.





□ = Off-White

■ = Cherry