

Viking Eco Alpaca – Fox4you

Sweater

1207-1

Size:	one size
Bust, approx.	120 cm
	47.2 in
Length, approx.	44 cm
	17.3 in
Sleeve length, approx.	16 cm
	6.3 in

ALTERNATIVE YARN: Viking Eco Alpaca (100% alpaca), 100 g skein. Viking Odin (100% wool, superwash), 100 g ball

Eco Alpaca:

Grey, 415 6 skeins

Viking Fox4you:

510 2 balls

Circular needle and double pointed needles size 5 mm – US 8 - UK/Canadian 6

Gauge: 18 sts = approx. 10 cm/4 in over St st using needles size 5 mm. **Check your gauge to ensure success.**

SWEATER

Using needles size 5 mm and grey yarn, cast on 216 sts. Work in rnds 10 rnds in St st, and 10 rnds in Rev St st. Place markers each side, 109 sts for front and 107 sts for back. Next rnd: K7, *K2tog, 1 yo, K16*, rep *-* across the rnd, end with K9.

Lengths of Eco Alpaca will be threaded through these 12 holes (see photo). Beg from WS, and thread yarn through the hole, around lower edge, and again through the hole. Rep 3 times for each hole. Tie ends on WS.

Work in patt A, and rep until patt measures 18 cm/7.3 in. Bind off 9 sts at each side, 4 sts before a marker, and 5 sts after a marker (patt is the same both sides of the armholes). Leave work aside, and knit the sleeves.

Sleeves: Using needles size 5 mm and grey yarn, cast on 126 sts. Work 10 rnds in St st, and 10 rnds in Rev St st. Place a marker around first st beg of rnd (= mid under sleeve). Next rnd: K7, *K2tog, 1 yo, K16*, rep *-* across the rnd, end with K9. Thread Eco Alpaca through the holes as for the body. Work and rep patt A. When sleeve measures same as body, bind off 9 sts mid under sleeve, 4 sts both sides of the mid st. Leave work aside, and knit the other sleeve.

Yoke: Slip all pieces on same circular needle size 5 mm. Slip sleeve sts over the armholes = 432 sts. Place markers at each 4 seamlines. Cont working in patt A, and beg raglan-dec: Work until 2 sts rem before a marker, K2tog, sl next st, K1,psso. Rep dec at each 4 seamlines every 2nd rnd until 112 sts rem. Dec evenly across next rnd number of sts to be 108 sts. Beg from right shoulder, and work as foll: K7, * K2tog, 1 yo, K16*, rep *-* across the rnd, and end with K9 (thread Eco Alpaca through the holes as for body and sleeves). Work now as foll: Purl 2 rnds, knit 1 rnd, purl 1 rnd. Next rnd: *K2tog, 1 yo*, rep *-* across the rnd (these holes are for threading a cord in the end). Cont working as foll: Purl 1rnd, knit 1rnd, purl 3 rnds and end with 8 rnds in St st. Bind off.

Twist approx. 90 cm/35.4 in long cord.

Crochet ball:

Using crochet hook size 4 mm and grey Eco Alpaca, ch4, join into a ring.

End each rnd with 1 sl st to 1st sc of the rnd. Work all sc to the back loop of prev rnd.

1st rnd: 8 sc into the ring.

2nd rnd: 2 sc to each st = 16 sts

3rd and 4th rnd: 16 sc.

5th rnd: [1 sc, 2 sc into same st], rep [-] across the rnd = 24 sts

6th rnd: 24 sc

7th rnd: [2 sc, skip 1 st, 1sc to next st], rep [-] across the rnd = 16 sts

8th and 9th rnd: 16 sc

10th rnd: [sc, skip 1 st, 1sc to next st], rep [-] across the rnd = 8 sts

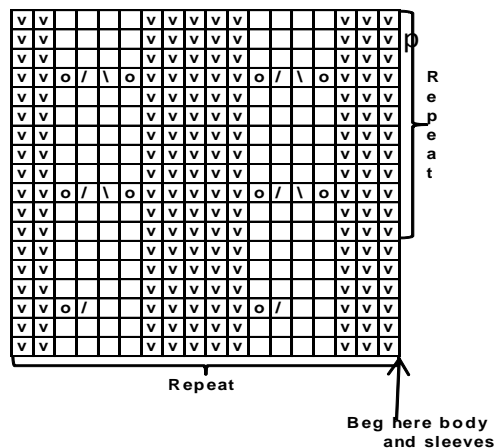
Fill ball with stuffing fiber.

11th rnd: Work same as 10th rnd = 4 sts.

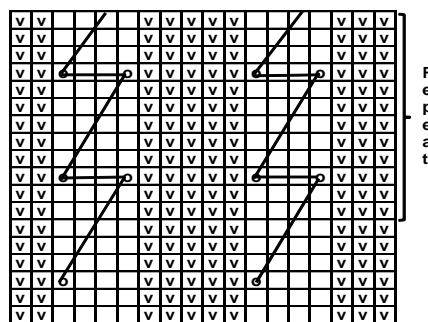
Break yarn, and draw through last st.

Weave in all ends on WS, and close the hole with few sts.

Pattern A



- v = Purl
- = Knit
- o = 1 yo
- / = sl 1 st, K1, psso
- [/] = K2tog



Thread with Fox4you. Beg from WS. Fasten thread, and beg from hole down on left side. See the sketch. Straight lines are on WS, slanting ones on RS. Fasten yarn on WS. Beg again next row from down.

Viking Eco Alpaca – Fox4you

Cardigan 1207-2

Size:	XS	S	M	L	XL	XXL
Bust:	85	90	95	102	110	118 cm
	33.5	35.4	37.4	40.2	43.3	46.4 in
Length:	63	64	65	66	66	67 cm
	24.8	25.2	25.6	26	26	26.4 in
Sleeve length:	48	49	50	50	51	52 cm
	18.9	19.3	19.7	19.7	20.1	20.5 in

ALTERNATIVE YARN: Viking Eco Alpaca (100% alpaca superfine), Viking Odin (100% wool, superwash), 100 g balls

Eco Alpaca

Grey, 415: 10 10 11 11 12 12 skeins

Fox4you

Light Grey, 512 2 3 3 3 3 3 balls

Circular needle and double pointed needles size 5 mm – US 8 – UK/Canadian 6 + and circular needle size 8 mm – US 11 – UK/Canadian 0, for Fox4you fur yarn

Gauge, Eco Alpaca: 18 sts = approx. 10 cm/4 in over St st using needles size 5 mm. **Gauge, Fox4you:** 11 sts = approx. 10 cm/4 in over St st using needles size 8 mm. **Check your gauge to ensure success.**

Fox4you

Work with double yarn min 3 m/118.2 in when you start a new ball of yarn. You don't need to weave in yarn ends, and you can cut off ends quite close to the sts.

CARDIGAN

Using needles size 5 mm and Eco Alpaca, cast on 188-196-208-220-236-248 sts. Work back and forth in Garter st. Place markers each side, 94-98-104-110-118-124 sts for back, and 47-49-52-55-59-62 sts for each front. Cont working in Garter st, and dec 1 st both sides of the markers every 8th row altog. 9 times on each side = 152-162-172-184-198-212 sts on a row. Cont working without dec until work measures approx. 43-43-43-43-42-42 cm/16.9-16.9-16.9-16.9-16.5-16.5 in. Bind off 10 sts each side (5 sts both sides of the markers). Leave work aside, and knit the sleeves.

Sleeves

Using needles size 8 mm and Fox4you, cast on 22-22-24-24-26-26 sts. Work back and forth in Garter st, altog 12 rows. Change to grey Eco Alpaka, and needles size 5 mm. Inc 1 st into each st across the row = 44-44-48-48-52-52 sts. Cont working back and forth in Garter st, and inc 1 st at each edge approx. every 2 ½-2-2 ½-2-2-2 cm/1-1-1-0.8-0.8-0.8 in until you have altog. 76-80-82-86-90-94 sts on a row. Bind off 5 sts each side. Slip rem sts on holder. Work same for the other sleeve.

Yoke: Slip all sts on same circular needle, sleeves over the bound-off sts for armholes = 264-282-296-316-338-360 sts on a row. Cont working back and forth in Garter st over all sts, and beg raglan-dec: work until 3 sts rem before a marker, K2togtbl, K2, K2tog. Rep dec at each 4 seamlines every 2nd row altog. 22-24-25-27-29-31 times = 88-90-96-100-106-112 sts on a row. Work 6 rows in Garter st without dec. Dec across next rnd evenly across the rnd number of sts to be 73-73-77-79-81-85 sts. Cont working back and forth 3 cm/1.2 in in K1,P1 rib.

Hood: Cont working with the hood. Knit 1 row (RS), and inc evenly across number of sts to be 86-86-86-92-92-92 sts. Cont working back and forth in Garter st until work measures approx. 27 cm/10.6 in. Slip sts on holders, and join top seam.

Edge around front edge of the hood: Using needles size 8 mm and Fox4you fur yarn, pick or knit up approx. 68 sts along hood edge (+ approx. 5 sts from rib edge on each side). Work back and forth 10 rows in St st. Bind off. Twist a cord using grey yarn. Fold fur edge in double, and sew on WS (place cord inside before sewing the folded edge). Use sewing thread.

Finishing

Sew under arm seams. Weave in all ends on WS. Sew 3 pairs of duffel coat toggles on front (see photo).

Knitted tassel, Fox4you:

Using dpn size 8 mm, cast on 4 sts. Knit 1 rnd, and inc 1 st into each st = 8 sts Next rnd: Inc 1 st into each st = 16 sts. Knit 1 rnd. Inc 1 st to every 2nd st = 24 sts. Work 4 rnds in St st. Next rnd: *K1, K2tog*, rep *-* across the rnd = 16 sts. Next rnd: Knit all sts tog in pairs = 8 sts. Knit 1 rnd. Next rnd: Knit all sts tog in pairs = 4 sts. Break yarn, and thread through rem sts. Turn work inside out (WS is furrier). Weave in all ends on WS. Thread a yarn through cast-on sts, and pull tightly. Fasten pompon to the tip of the hood. .

Viking Eco Alpaca – Fox4you

Vest

1207-3

Size:	Woman
Bust, approx:	90 cm
	35.4 in
Length, approx.:	85 cm
	33.5 in

ALTERNATIVE YARN: Viking Eco Alpaca (100% alpaca superfine), Viking Odin (100% wool, superwash), 100 g ball

Eco Alpaca

Black, 404: 10 skeins

Fox4you

Black, 102 2 balls

Circular needle size 5 mm – US 8 – UK/Canadian 6 + circular needle size 8 mm – US 11 – UK/Canadian 0 for Fox4you + crochet hook size 6-7 mm – US J/10 – K/10½ - UK/Canadian 4-2

Gauge, Eco Alpaca: 18 sts = approx. 10 cm/4 in over St st using needles size 5 mm. **Fox4you:** 11 sts = approx. 10 cm/4 in over St st using needles size 8 mm. **Check your gauge to ensure success.**

Fox4you

Work with double yarn min 3 m/118.2 in when you start a new ball of yarn. You don't need to weave in yarn ends, and you can cut off ends quite close to the sts.

Seed stitch:

1st row: K1, P1

2nd row: Knit all purl-sts, and purl all knit-sts

Rep 2nd row.

Note! VEST IS WORKED IN 2 SIDE PIECES

Right side: Beg with right side as foll: Using Eco Alpaca and needles size 5 mm, cast on 71 sts. Work back and forth in Seed st 4 cm/1.6 in. Cont working in patt as foll: Seed st over 5 sts, patt as charted, rep 7 times, end with 5 sts in Seed st as charted. Cont working back and forth as established, but inc 1 st inside first and last «cable patt» as charted, rep inc approx. every 5 cm/2 in.

When work measures approx. 60 cm/23.6 in, bind off mid st for armhole. Finish back and front separately.

Back

Cont working back and forth same as before. When all side inc are ready (altog. 17 times = 34 sts), and 105 sts on a row, cont until work measures approx. 85 cm/33.5 and armhole measures approx. 25 cm/9.8 in, bind off.

Front

Work same as for back until work measures approx. 76 cm/29.9 in. Make first buttonhole at front edge: Work 2 sts, bind off 2 sts (next row: cast on 2 sts over the bound-off sts). When work measures approx. 78 cm/30.7 in, and armhole measures approx. 18 cm/7.1 in, bind off for neck edge as foll: Beg from RS, work 5 sts in Seed st (front band), patt over 6 sts, bind off next 17 sts, work patt over rem sts. Finish each side separately. Bind off at neck edge every 2nd row 1x3, 1x2, and 1x1 st. Cont working until front measures same as back, bind off. Work same for the other side, rev all shaping. When work measures 2 cm/0.8 in less than total length, make second buttonhole as foll: Work 2 sts, bind off next 2 sts (next row: cast on 2 sts over the bound-off sts). When work measures same as back, bind off.

Left side: Work same as right side, **but in Seed st without patt.** Note! Bind off for neck edge same as for right front, but rev all shaping. Fronts are overlapping each other, see sketch. Don't forget to make the buttonholes.

Finishing

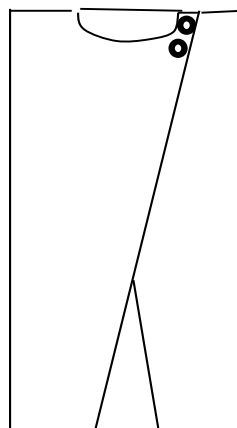
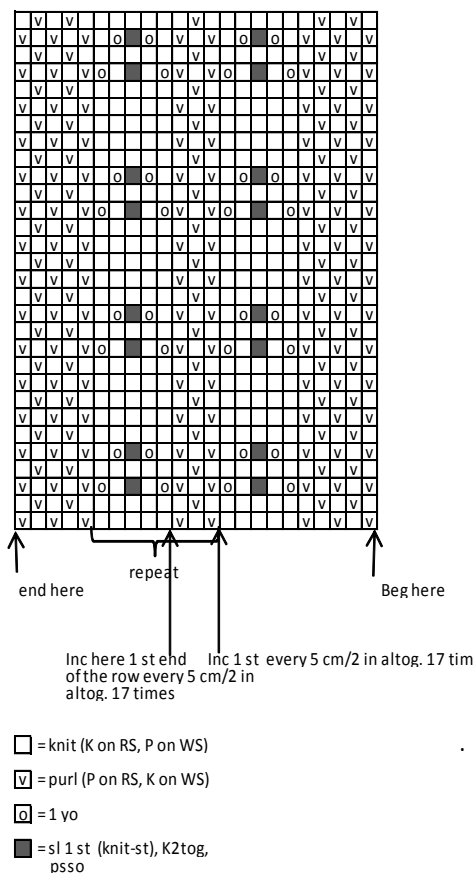
Sew shoulder seams. Sew mid back seam.

Beg from upper front edge. Using crochet hook size 6 mm and Fox4you, work sc-row from WS along front edge (take care that the edge doesn't turn too tight, or start to flare).

Neck band: Beg from right front edge, using needles size 5 mm and Eco Alpaca, pick or knit up from RS approx. 120 sts. (Pick up sts along right front neck edge, back, and left front neck edge). Knit 1 row. Change to needles size 8 mm, and Fox4you. Knit all sts tog in pairs = 60 sts. Cont working back and forth in Garter st until you have used all yarn that is left. Note! Leave enough yarn for binding off sts.

Sew buttons on left front (above neck edge bind-offs). Sew 2 buttons on right front, **but on WS.**

Weave in all ends on WS.



Viking Eco Alpaca – Fox4you

Vest

1207-4

Size:	M/L
Bust:	108 cm
	42.6 in
Length:	65 cm
	25.6 in

ALTERNATIVE YARN: Viking Eco Alpaca (100% alpaca superfine), Viking Odin (100% wool, superwash), 100 g ball

Eco Alpaca

Off-White, 402:

7 skeins

Fox4you

Off-White, 705

2 balls

Circular needle and double pointed needles size 5 mm – US 8 – UK/Canadian 6 + and circular needle size 8 mm – US 11 – UK/Canadian 0 for Fox4you.

Gauge, Eco Alpaca: 18 sts = approx. 10 cm/4 in over St st using needles size 5 mm. **Fox4you:** 11 sts = approx. 10 cm/4 in over St st using needles size 8 mm. **Check your gauge to ensure success.**

Fox4you

Work with double yarn min 3 m/118.2 in when you start a new ball of yarn. You don't need to weave in yarn ends, and you can cut off ends quite close to the sts.

VEST

Beg with one of the front pieces. Using needles size 5 mm and Eco Alpaca, cast on 52 sts. Work back and forth 4 rows in K1,P1 rib. Cont working in patt as foll: Work patt I as charted, patt II, patt III (= mid), patt II, patt IIII. Cont working back and forth as established until work measures approx. 65 cm/25.6 in. Leave work aside, and work same for the other front.

Slip both front pieces on same needle, and cast on 25 sts between (= neck edge). These sts are worked in St st. Cont working in patt with side sts. When work measures approx. 63 cm/24.8 in, measured from the cast-on neck edge sts, work 4 rows in K1,P1 rib. Bind off in rib.

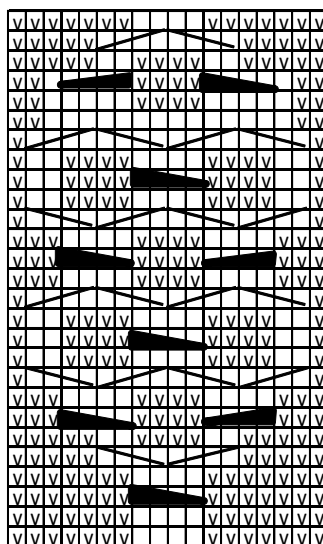
Front edge bands, Fox4you

Using needles size 8 mm and fur yarn, cast on 5 sts. Work back and forth in Garter st, until band measures until mid back neck edge (don't stretch the work when measuring). Bind off. Work same for the other front band.

Sew fur ands along fronts and neck edge. Use sewing thread.

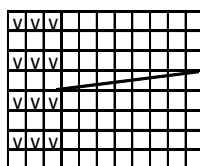
Crochet 4 buttonhole loops for toggles: Using crochet hook size 4 mm and Eco Alpaca, ch16. Turn, and work 1 sc to each st. Use yarn ends for sewing the loops on front pieces. Sew 2 toggles on each side of the back, leaving approx. 30 cm/11.8 in for armholes.

MØNSTER III



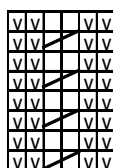
Beg her

MØNSTER IIII



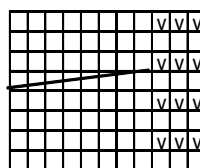
Beg here

PATTERN II



Beg here

PATTERN I



Beg here

□ = knit (K on RS, P on WS)

◻ = purl (P on RS, K on WS)

□□□□ = slip 4 sts on cn, hold to front, K4, knit sts from cn

◻ = knit 2nd st first (without slipping it from the needle), and after that knit 1st st pinnen). Slip both sts on RH needle

◻ = slip 2 sts on cn, hold to front, K2, knit sts from cn

◻ = sett 2 m på hielpep bak arb, strikk 2 m rett, strikk m fra hielpep vranget.

◻ = slip 2 sts on cn, hold to front, P2, knit sts from cn

◻ = slip 2 sts on cn, hold to back, K2, knit sts from cn

Viking Eco Alpaca - Fox4you

Tunic and bag

1207-5

Size	XS	S	M	L	XL	XXL
Bust	85	90	95	102	110	118
	33.5	35.4	37.4	40.2	43.3	46.2
						cm
Length	76	78	80	81	82	83
	29.9	30.7	31.5	31.9	32.3	32.7
						in

ALTERNATIVE YARN: Eco Alpaca (100 % alpaca), 100 g skein, Viking Odin (100% wool, superwash), 100 g ball

TUNIC

Eco Alpaca

Beige, 407 5 6 6 6 7 7 skeins

Fox4you

Light Beige, 705 4 4 4 5 5 5 balls

BAG

Fox4you

Light Beige, 705 4 balls

Circular needle sizes 4 ½, 5 and 8 mm – US 7, 8 and 11 – UK/Canadian 7,6 and 0

+ chain, button and a snap fastener for bag

Gauge: Eco Alpaca: 18 sts = approx. 10 cm/4 in over St st using needles size 5 mm.

Fox4you: 11 sts = approx. 10cm/4 in over St st using needles size 8 mm. **Check your gauge to ensure success.**

Fox4you

Work with double yarn min 3 m/118.2 in when you start a new ball of yarn. You don't need to weave in yarn ends, and you can cut off ends quite close to the sts.

TUNIC

Using needles size 4½ mm and Eco Alpaca, cast on 192-202-210-224-238-252 sts. Work in rnds 4 cm/1.6 in in St st. Next rnd = eyelet rnd: *K2tog, 1 yo*, rep *-* across the rnd = folding edge. Work 4 cm/1.6 in St st. Change to needles size 5mm. Place markers each side, 96-101-105-112-119-126 sts for both back and front. Cont working in St st. When work measures 24-25-26-26-26-26 cm/9.4-9.8-10.2-10.2-10.2-10.2 in, measured from folding edge, dec 1 st both sides of the markers, before a marker: K2togtbl; after a marker: K2tog = 4 sts dec on a rnd. Rep dec every 3 cm/1.2 in 10 times (same for all sizes) = 152-162-170-184-198-212 sts on a rnd. When work measures 56-57-58-58-58-58 cm/22-22.4-22.8-22.8-22.4-22.4 in (or desired length before armholes), bind off 8-8-8-10-10-10 sts each side for armholes = 4-4-4-5-5-5 sts both sides of the markers.

Yoke

Next rnd: Cast on 54-58-62-66-70-74 sts over both armholes for sleeves = 244-262-278-296-318-340 sts on a rnd. Change to needles size 8 mm and Fox4you. Cont working in St st, **4 rnds** with Fox4you, and **3 cm/1.2 in** with Eco Alpaca, keep rep stripes. **Same time** dec evenly across first rnd 21-23-22-23-25-24 sts each time you change to another yarn = 8-8-9-9-9-10 dec = 76-78-80-89-93-100 sts rem on a rnd. Cont until work measures the given length, and yoke measures approx. 20-21-22-23-24-25 cm/7.9-8.3-8.7-9.1-9.4-9.8 in (Note! End with 3 cm/1.2 in with Eco Alpaca).

Neck band

Change to needles size 8 mm and Fox4you. Work 8 rnds in St st, but dec evenly across 1st rnd number of sts to be 42-44-46-50-52-54 sts. Bind off.

Weave in all ends on WS.

BAG

Using a short circular needle size 5 mm and Fox4you, cast on 46 sts. Work in rnds in St st until work measures approx. 22 cm/8.7 in. Bind off 33 sts. Cont working back and forth in Garter st for 11 cm/4.3 in. Bind off rem sts.

Sew bottom seam. Note: Check that fur is pointing downwards. Fasten a chain for shoulder strap each side (on WS) of the bag. Fold flap over the bag, and sew a snap fastener on WS of the flap, and a button on RS.

Viking Eco Alpaca – Fox4you

Cardigan

1207-6

Size:	S	M	L	XL	XXL
Bust:	93	100	110	120	130
	36.6	39.4	43.3	47.2	51.2
					in
Length:	60	61	62	62	62
	23.6	24	24.4	24.4	24.4
					in
Sleeve length:	48	50	50	52	52
	18.9	19.7	19.7	20.5	20.5
					in

ALTERNATIVE YARN: Eco Alpaca (100 % alpaca), 100 g skein, Viking Odin (100% wool, superwash), 100 g ball

Eco Alpaca

Off-White, 402 4 5 5 6 6 balls

Grey, 415 3 4 4 4 5 balls

Burgundy 404, 1 1 1 1 1 ball

Fox4you

Clr 706 2 2 2 2 2 balls

Circular needle and double pointed needles size 4½ and 5 mm – US 7 and 8 – UK/Canadian 7 and 6 + pair of knitting needles size 8 mm – US 11 – UK/Canadian 0

+ 6 buttons

Gauge, Eco Alpaca: 18 sts = approx. 10 cm/4 in over St st using needles size 5 mm. **Fox4you:** 11 sts = approx. 10 cm/4 in over St st using needles size 8 mm. **Check your gauge to ensure success.**

Fox4you

Work with double yarn min 3 m/118.2 in when you start a new ball of yarn. You don't need to weave in yarn ends, and you can cut off ends quite close to the sts.

CARDIGAN

Using needles size 5 mm and grey yarn, cast on 163-181-199-217-235 sts. Work in K1,P1 rib until work measures approx. 4 cm/1.6 in. Note! If you wish work in rnds, cast on 3 sts mid front (= purl each rnd with basic clr) = to be cut open later on.

Instruction is for a cardigan worked back and forth. Place markers each side, 85-93-103-111-121 sts for back, and 39-44-48-53-57 sts for each front. Cont working back and forth in patt I as charted. When work measures approx. 38-38-38-37-36 cm/15-15-15-14.6-14.2 in, divide work at side markers, and finish back and fronts separately (Note! If you work in rnds, keep on working until neck edge. Bind off for neck edge as explained for front, but bind off 3 mid sts, too).

Back

Cont working back and forth. When patt I is ready, cont working with off-white yarn until work measures approx. 60-61-62-62-62 cm/25.6-24-24.4-24.4-24.4 in, and armhole measures approx. 22-23-24-25-26 cm/8.7-9.1-9.4-9.8-10.2 in. Bind off.

Right front

Work same as for back, but when work measures approx. 52-53-54-54-54 cm/20.5-20.9-21.3-21.3-21.3 in, bind off beg of row (= RS) 9-9-9-10-10-10 sts for neck edge. Cont working back and forth, and bind off every 2nd row 1x3, 1x2, and 1x1 st. When work measures same as back, bind off.

Work same for left front, rev all shaping.

Sleeves

Using needles size 8 mm and Fox4you, cast on 20-21-22-23-24 sts. Work back and forth 8 rows in Garter st. Change to needles size 5 mm and grey Eco Alpaca. Knit 1 rnd. Cont working in St st, and inc evenly across 1st rnd number of sts to be 41-43-45-47-49 sts. Place a marker mid under sleeve. Inc 1 st both sides of the marker approx. every 2 cm/0.8 (same for all sizes). When work measures approx. 20-21-21-22-22 cm/7.9-8.3-8.3-8.7-8.7 in, work patt II, and after that patt III as charted. Cont working in St st with off-white yarn until work measures the given length, and you have 79-83-87-91-93 sts on a rnd. Bind off. Note! If you have chosen to cut the armholes open, turn work inside out, and work 4 rnds in St st for seam allowance. Bind off.

Work same for the other sleeve.

Finishing

For cutting the armholes and mid front: Sew 4 dense seams with sewing machine mid front and around armholes.

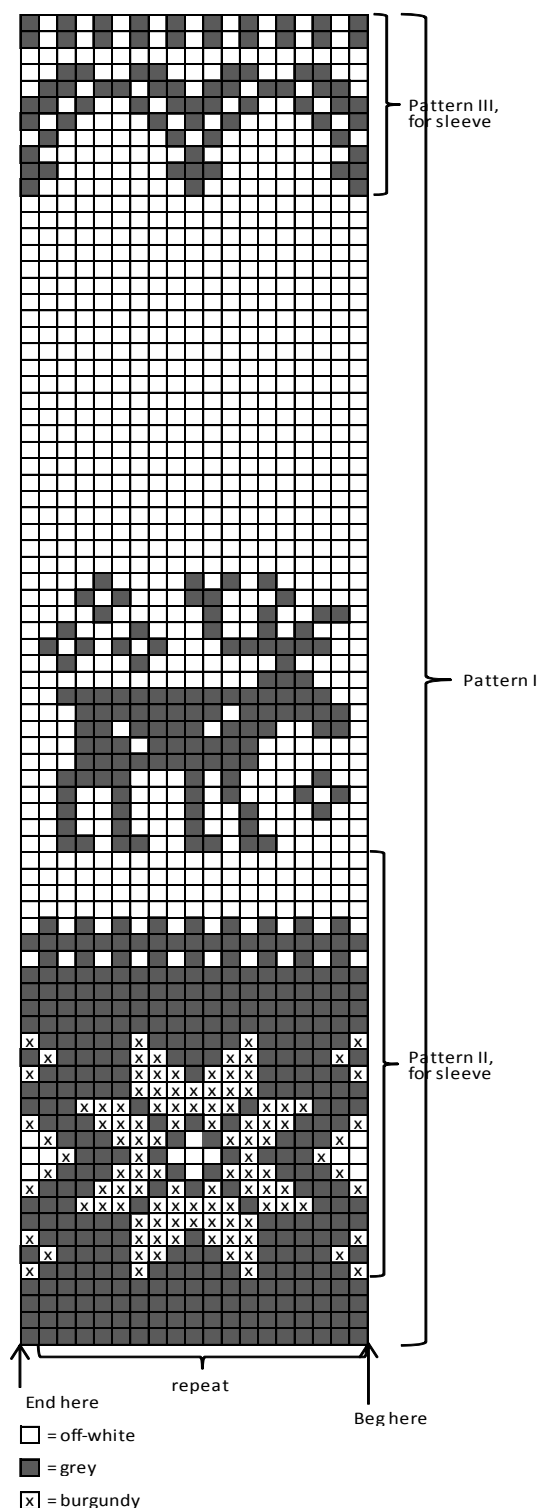
Sew shoulder seams.

Left front band: Using needles size 4½ mm and grey yarn, pick or knit up approx. 95-97-101-101-101 sts along front edge. Work back and forth 3 cm/1.2 in in K1,P1 rib. Bind off in rib. Place markers for altog. 6 buttonholes, one approx. 3 cm/1.2 in from lower edge, and one approx. 2 cm/0.8 in from neck edge, rest evenly spaced apart.

Right front band: Work same as for left front band, but make buttonholes mid band. Buttonhole: Bind off 3 sts. Next row: Cast on 3 sts over the bound-off sts.

Neck band

Using grey Eco Alpaca, pick or knit up approx. 80-82-84-84-86 sts along neck edge (Note! Also from front bands). Change to needles size 8 mm and Fox4you, and dec evenly across the row number of sts to be 50-52-54-56-56 sts. Work back and forth 8 rows in Garter st, or until yarn is finished (Note! Leave enough yarn for binding). Bind off.



Viking Eco Alpaca

Cardigan with a collar

1207-7

Size:	S	M	L	XL
Bust: approx.	100	110	122	132 cm
	39.4	43.3	48	51.9 in
Length: approx.	73	74	74	74 cm
	28.7	29.1	29.1	29.1 in
Sleeve length, with folding:	50	50	52	52 cm
	19.7	19.7	20.5	20.5 in

ALTERNATIVE YARN: Eco Alpaca (100 % alpaca), 100 g skein, Viking Odin (100% wool, superwash), 100 g ball

Off-White, 402	7	8	9	9 balls
Grey, 415	2	2	2	2 balls
Black, 404	1	1	1	1 ball
Beige, 407	1	1	2	2 balls

Circular needle and double pointed needles size 4½ and 5 mm – US 7 and 8 – UK/Canadian 7 and 6

Gauge: 18 sts = approx. 10 cm/4 in over St st using needles size 5 mm. **Check your gauge to ensure success.**

CARDIGAN

Using needles size 5 mm and off-white yarn, cast on 206-226-246-266 sts. Work back and forth approx. 8 cm/3.1 in in K2,P2 rib. Slip first and last 24 sts on holder (= front band sts) = 158-178-198-218 sts. Change to needles size 5mm. Knit 1 row, and inc evenly across number of sts to be 161-181-201-221 sts. Cast on 5 sts mid front (purl each rnd with basic clr, to be cut open later on). Place markers each side, 89-99-109-119 sts for back, and 36-41-46-51 sts for each front. Cont working in rnds in patt I as charted. When patt in is ready, cont working in St st with off-white yarn until work measures approx. 25-26-26-26 cm/9.8-10.2-10.2-10.2 in. Work patt II as charted, **and** when work measures approx. 34-35-35-35 cm/13.4-13.8-13.8-13.8 in, beg dec for V-neck. Dec 1 st inside 1 selvage st/mid purl-sts, both beg and end of every 4th rnd altog. 16 times. When patt II is ready, cont working in St st with off-white yarn until work measures approx. 47-48-48-48 cm/18.5-18.9-18.9-18.9 in. Work patt III as charted, and after that stripe patt as charted until the end. Bind off.

Sleeves

Using needles size 4½ mm and off-white yarn, cast on 48-48-52-52 sts. Work in rnds 16 cm/6.3 in in K2,P2 rib (same for all sizes). Ribbed edge will be folded in double. Knit 1 rnd, and inc evenly across number of sts to be 59-61-63-67 sts. Change to needles size 5 mm. Work 2 rnds in St st, and cont working in patt I as charted, **but** purl last st every rnd. Inc 1 st both sides of purl-st approx. every 6th rnd (same for all sizes). When patt I is ready, cont working in St st with off-white yarn until work measures approx. 30-30-31-31 cm/11.8-11.8-12.2-12.2 in (from cast-on edge). Work patt II as charted. When patt II is ready, cont working in St st with off-white yarn until work measures approx. 48-48-50-50 cm/18.9-18.9-19.7-19.7 in, measured from cast-on edge. Work patt III for sleeve. You have now 87-91-93-97 sts on a rnd, and sleeve measures approx. 58-58-60-60 cm/22.8-22.8-23.6-23.6 in. Change to off-white yarn, and work 2 rnds in St st. Turn inside out, and work 4 rnds in St st for seam allowance. Fold ribbed edge on RS.

Finishing: Mark armholes each side (approx. 24-25-26-27 cm/9.4-9.8-10.2-10.6 in), or measure width from sleeve top. Sew 2 dense machine seams around armholes, and mid front. Cut open between seams. Sew shoulder seams.

Left front band: Slip sts from holder on needles size 4½ mm. Cont working in rib until front and measures up to first V-neck

dec (don't stretch work when measuring). Inc 1 st beg of RS-row (= edge facing front piece), rep every 2nd row until front band reaches up to shoulder. Cont working without inc until front band reaches up to mid back. Slip sts on holder, or bind off. Place markers for 4 buttons, one on first row after hem rib, and one at first V-neck dec, rest evenly spaced apart.

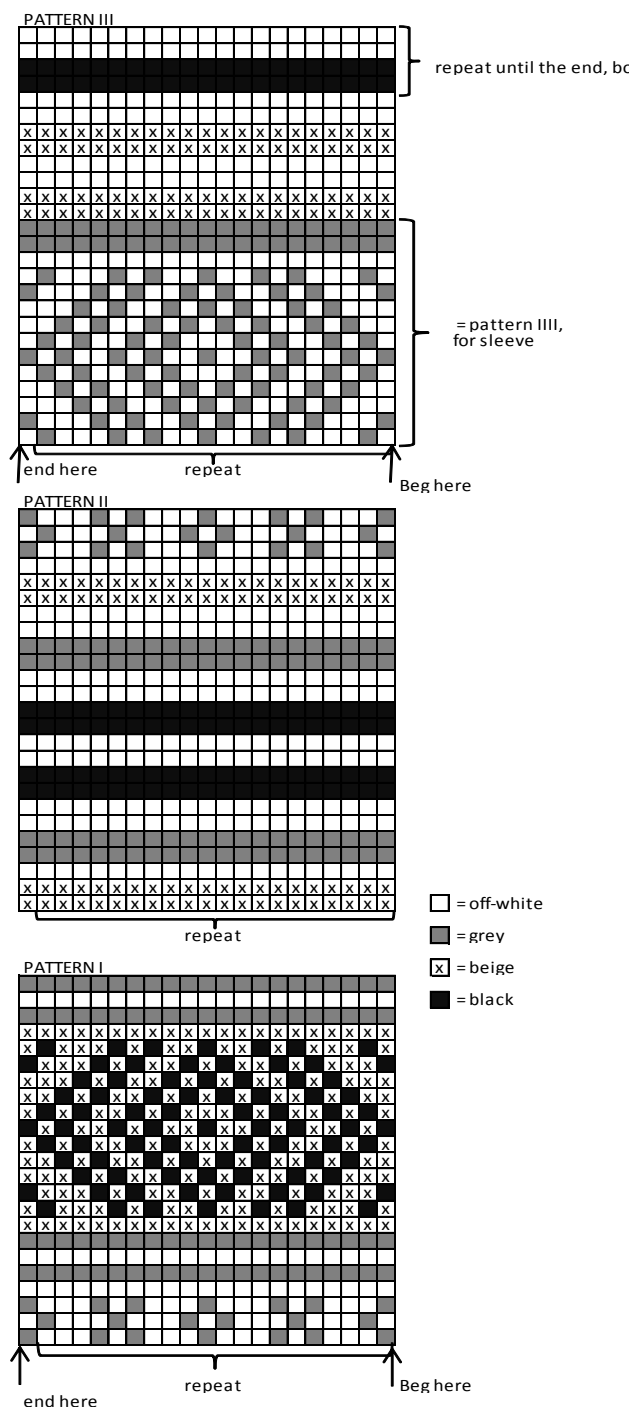
Work same for right front and, but make buttonholes.

Buttonhole: Bind off 3 sts. Next row: Cast on 3 sts over the bound-off sts. Inc 1st for shawl collar end of the row (edge facing the front piece). Bind off, or slip sts on holder.

Sew collar to neck edge. If you wish, you can knit a strip to cover the cut edge: Cast on 4 sts with off-white yarn. Work back and forth in St st until strip covers the cut edge. Sew strip over cut edge on WS.

Sew on sleeves, and seam allowance on WS. Weave in all ends on WS.

Fold ribbed sleeve edges in double on RS, and fasten with few small sts mid under sleeve. Sew on buttons.



Viking Eco Alpaca – Fox4you

Vest

1207-8

Size:	XS	S	M	L	XL	XXL
Bust:	85	90	95	102	110	118 cm
	33.5	35.4	37.4	40.2	43.3	46.4 in
Length:	73	74	75	76	76	77 cm
	28.7	29.1	29.5	29.9	29.9	30.3 in

ALTERNATIVE YARN: Viking Eco Alpaca (100% alpaca superfine), Viking Odin (100% wool, superwash), 100 g ball

Eco Alpaca

Beige, 407: 6 6 7 7 8 8 balls

Fox4you

Brown, 736 3 3 3 3 3 3 balls

Circular needle size 5 mm –US 8 – UK/Canadian 6 + pair of knitting needles size 8 mm – US 11 – UK/Canadian 0 for Fox4you.

Gauge, Eco Alpaca: 18 sts = approx. 10 cm/4 in over St st using needles size 4 ½ or 5 mm. **Fox4you:** 11 sts = approx. 10 cm/4 in over St st using needles size 8 mm. **Check your gauge to ensure success.**

Fox4you

Work with double yarn min 3 m/118.2 in when you start a new ball of yarn. You don't need to weave in yarn ends, and you can cut off ends close to the sts.

VEST

Using needles size 5 mm and beige Eco Alpaca, cast on 172-180-188-204-216-232 sts. Work back and forth 10 rows in Garter st. Place markers each side, 92-96-100-108-114-122 sts for back, and 40-42-44-48-51-55 sts for each front. Cont working in St st and patt as foll: Beg from right front, K9 (first st = selvage st, knit every row), work patt as charted (= 17 sts), work in St st until 26 sts rem, work patt as charted, and end with 9 sts in St st. Cont working back and forth as established, but dec 1 st both sides of the markers every 12th row altog. 9 times, **but** when work measures approx. 43-44-45-46-46-47 cm/16.9-17.3-17.7-18.1-18.1-18.5 in, beg dec for V-neck mid front. Dec 1 st inside selvage st every 4th row. When work measures approx. 53-53-53-53-52-52 cm/20.9-20.9-20.9-20.9-20.5-20.5 in, bind off 6 sts at each side (3 sts both sides of the markers). Finish back and front separately.

Back

Cont working back and forth in St st. Bind off at each edge every 2nd row 1x2, and 1x1st. Cont working until work measures approx. 73-74-75-76-76-77 cm/28.7-29.1-29.5-29.9-29.9-30.3 in, and armhole measures approx. 20-21-22-23-24-25 cm/7.9-8.3-8.7-9.1-9.4-9.8 in. Bind off.

Right front

Cont working in patt back and forth, and dec for V-neck. Bind off for armhole same as for back. Rep V-neck dec altog 15 times. Cont working without dec until work measures same as back. Bind off.

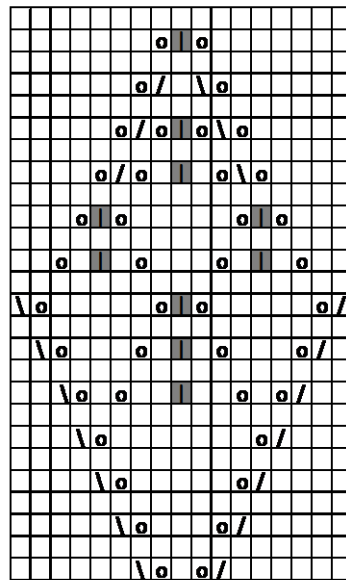
Work same for left front, rev all shaping.

Finishing

Sew shoulder seams.

Armhole bands: Beg mid under arm, and pick or knit up approx. 72-76-80-84-86-90 sts around armholes. Work back and forth 6 rows in Garter st. Bind off. Sew under arm seam.

Fur bands along front edges: Using needles size 8 mm and Fox4you, cast on 7 sts. Work back and forth in Garter st until band measures across front edge, until mid back neck edge. Bind off. Sew band along front and neck edge, use sewing thread (don't stretch the work when sewing on the band). Work same for the other side. Sew mid back seam.



Begin here

□ = knit

▤ = sl 1 st, K2tog, pssso

▥ = K2tog

▧ = sl 1 st, K1, pssso

▨ = 1 yo

Viking Eco Alpaca – Fox4you

Vest

1207-9

Size:	XS	S	M	L	XL	XXL
Bust:	85	90	95	102	110	118 cm
	33.5	35.4	37.4	40.2	43.3	46.4 in
Length:	38	39	40	40	41	41 cm
	15	15.4	15.7	15.7	16.1	16.1 in

ALTERNATIVE YARN: Viking Eco Alpaca (100% alpaca superfine), Viking Odin (100% wool, superwash), 100 g ball

VEST AND HAT

Eco Alpaca

Off-White, 402: 2 3 3 3 3 3 skeins

Fox4you

Beige, 722 3 4 4 5 5 5 balls

Note! Without hat, 4 balls of fur yarn is enough for the biggest sizes, and 2 skeins of Eco Alpaca is enough for all sizes.

Circular needle size 5 mm – US 8 – UK/Canadian 6 + circular needle size 8 mm – US 11 – UK/Canadian 0 for fur yarn + crochet hook size 5 mm – US H/8 – UK/Canadian 6

Gauge, Eco Alpaca: 18 sts = approx. 10 cm/4 in over St st using needles size 4½ or 5 mm. **Fox4you:** 11 sts = approx. 10 cm/4 in over St st using needles size 8 mm. **Check your gauge to ensure success.**

Fox4you

Work with double yarn min 3 m/118.2 in when you start a new ball of yarn. You don't need to weave in yarn ends, and you can cut off ends quite close to the sts.

Note! VESTE IS WORKED IN 3 PIECES – BACK AND 2 FRONT PIECES. BOTH FRONTS ARE WORKED IN FOX4YOU, AND BACK IS WORKED IN ECO ALPACA.

Seed st:

1st row: K1, P1

2nd row: Knit all purl-sts, and purl all knit-sts

Rep 2nd row.

Back

Using needles size 5 mm and Eco Alpaca, cast on 67-75-75-83-91-99 sts. Work 4 rows in Seed st. Cont working back and forth in patt as charted until work measures approx. 17-18-18-18-18-18 cm/6.7-7.1-7.1-7.1-7.1 in, bind off for armhole at each edge every 2nd row 1x4, 1x3, 1x2, and 1x1 st. When work measures approx. 35-36-37-37-38-38 cm/13.8-14.2-14.6-14.6-15-15 in (or approx. 3 cm/1.2 in less than total length), bind off mid 17-21-21-25-25 sts for neck edge. Finish each side separately. Bind off at neck edge every 2nd row 1x3, 1x2, and 1x1 st (= 9-11-11-15-17-21 sts rem for shoulder). When work measures the given length, bind off. Work same for the other side, rev all shaping.

Right front

Using needles size 8 mm and Fox4you, cast on 19-21-23-24-25-27 sts. Work back and forth in Garter st. When work measures approx. 17-18-18-18-18-18 cm/6.7-7.1-7.1-7.1-7.1 in, bind off for armhole at side, and dec for V-neck mid front as foll: Bind for armhole every 2nd row 1x3, 1x2, and 1x1 st, and for V-neck K2togtbl every 2nd row altog. 8-9-10-10-10 times = 5-6-7-8-9-11 sts rem for shoulder. When work measures same as back, bind off.

Work same for left front, rev all shaping.

Finishing

Sew shoulder and side seams using Eco Alpaca.

Sew pair of clasps mid front, at first dec for V-neck.

HAT

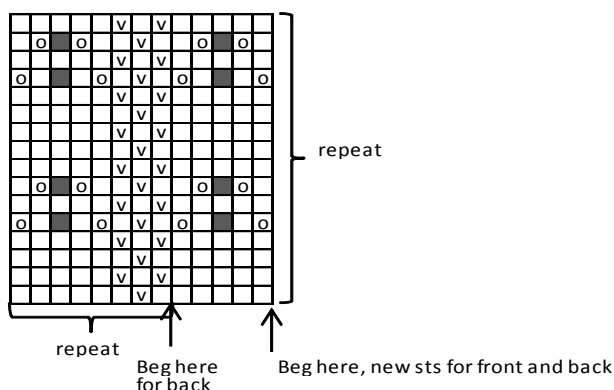
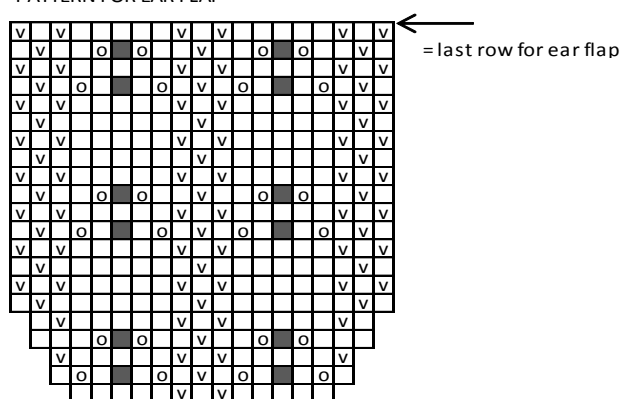
Beg from one ear flap. Using needles size 5 mm and Eco Alpaca, cast on 13 sts. Work back and forth as charted. Leave work aside, and knit the other ear flap. Slip ear flaps on same circular needle, and cast on 37 sts mid front and 13 sts mid back = 88 sts. Cont working in rnds in patt, but work 2 rnds in K1,P1 over the cast-on sts mid front and back. After that, cont working in patt over all sts until work measures approx. 14 cm/5.5 in, measured mid front. Beg dec for crown over 3 Seed sts as foll: sl 1 st, K2tog, psso, rep across the rnd. Work 3 rnds without dec. Cont dec as charted, without yo's = 22 sts on a rnd. Cont working in St st, and dec on 3rd rnd by knitting all sts tog in pairs = 11 sts rem. Break yarn, thread through rem sts, pull tight, and weave in on WS.

Using crochet hook size 5 mm and Fox4you: Crochet 1 rnd sc from WS around the lower edge.

Knitted pompon, Fox4you:

Using dpn size 8 mm, cast on 4 sts. Knit 1 rnd, and inc 1 st to each st = 8 sts. Next rnd: Inc 1 st to each st = 16 sts. Knit 1 rnd. Next rnd: Inc 1 st to ever 2nd st = 24 sts. Work 4 rnds in St st. Next rnd: *K1, K2tog*, rep *-* across the rnd = 16 sts. Knit 1 rnd. Knit all sts tog in pairs until 4 sts rem. Break yarn, and thread through rem sts, pull tightly, and weave in on WS.

PATTERN FOR EAR FLAP



□ = knit (K on RS, P on WS)

▤ = purl (P on RS, K on WS)

○ = 1 yo

■ = sl 1 st, K2tog, psso

Viking Eco Alpaca – Fox4you

Cardigan

1207-10

Size:	XS	S	M	L	XL	XXL
Bust:	85	90	95	102	110	118 cm
	33.5	35.4	37.4	40.2	43.3	46.4 in
Length:	63	64	65	66	66	67 cm
	24.8	25.2	25.6	26	26	26.4 in
Sleeve length:	48	49	50	50	51	52 cm
	18.9	19.3	19.7	19.7	20.1	20.5 in

ALTERNATIVE YARN: Viking Eco Alpaca (100% alpaca superfine), Viking Odin (100% wool, superwash), 100 g ball

Eco Alpaca

Off-White, 402: 8 8 9 9 10 10 skeins

Fox4you

Brown, 792 2 2 2 2 2 2 balls

Circular needle size 4 ½ and 5 mm – US 7 and 8 – UK/Canadian 7 and 6 + long circular needle size 8 mm – US 11 –UK/Canadian 0 for fur yarn

Gauge, Eco Alpaca: 18 sts = approx. 10 cm/4 in over St st using needles size 4½ or 5 mm. **Fox4you:** 11 sts = approx. 10 cm/4 in over St st using needles size 8 mm. **Check your gauge to ensure success.**

Fox4you

Work with double yarn min 3 m/118.2 in when you start a new ball of yarn. You don't need to weave in yarn ends, and you can cut off ends quite close to the sts.

CARDIGAN

Using needles size 5 mm and off-white Eco Alpaca, cast on 172-180-188-204-216-232 sts. Work back and forth 3 cm/1.2 in in K2,P2 rib. Place markers each side, 92-96-100-108-114-122 sts for back, and 40-42-44-48-51-55 sts for each front. Cont working in St st. Dec 1 st both sides of the markers every 8th row. When work measures approx. 15 cm/5.9 in (same for all sizes), work for pockets as foll: Beg from RS, work St st over 9 sts, work next 18 sts with a strand of extra yarn (pref. a different clr), cont with off-white yarn, and work in St st until 27 sts rem, work next 18 sts with a strand of extra yarn, and work St st over rem 9 sts. Cont working in St st over all sts. Dec at each side altog. 9 times = 136-144-152-166-180-194 sts. Cont working without dec, until work measures approx. 43-43-43-43-42-42 cm/16.9-16.9-16.9-16.9-16.5-16.5 in. Bind off 10 sts each side (5 sts both sides of the markers). Leave work aside, and knit the sleeves.

Sleeves

Using needles size 8 mm and Fox4you, cast on 22-22-24-24-26-26 sts. Work back and forth 12 rows in Garter st. Change to off-white Eco Alpaka, and inc 1 st to each st across the rnd = 44-44-48-48-52-52 sts. Place a marker mid under sleeve. Cont working in rnds in St st. Inc 1 st both sides of the marker approx. every 2 ½-2-2 ½-2-2-2 cm/1-0.8-1-0.8-0.8-0.8 in, until you have altog. 76-80-82-86-90-94 sts on a rnd. Bind off 10 sts mid under sleeve (5 sts each side of the marker). Slip rem sts on holder. Work same for the other sleeve.

Yoke: Slip all sts on same needle, sleeves over the bound-off sts for armholes. Work 2 rows in St st over all sts, and dec evenly across first row number of sts to be 247-247-266-285-304-342 sts. Cont working back and forth in patt, and dec as charted until 98-98-105-112-119-133 sts rem. Cont working in Garter st until work measures the given length. Dec evenly across the row number of sts to be 82-82-86-90-94-98 sts. Change to needles size 4½ mm. and work approx. 4 cm/1.6 in in K2,P2 rib.

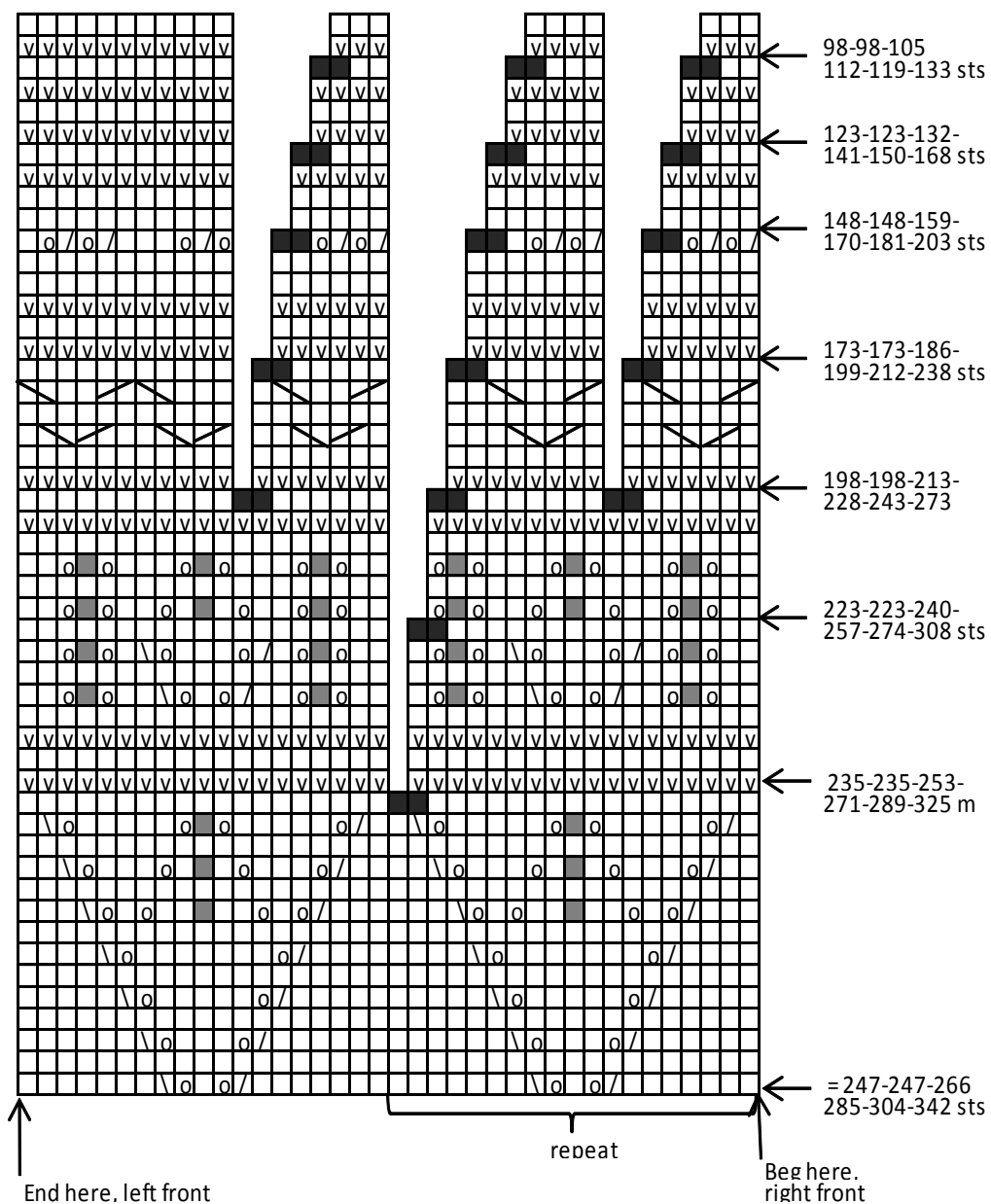
Hood: Cont working back and forth in St st until hood measures approx. 27 cm/10.6 in. Slip sts on holders, and join top seam.

Hood edge: Using needles size 8 mm and Fox4you, pick or knit up sts along hood front (also from rib each side). Work back and forth 10 rows in Garter st. Bind off. Twist a cord using Eco Alpaca. Fold front edge in double, and sew on WS. (Note! Place the cord inside before sewing the folded edge).

Finishing

Sew under arm seams.

Front bands: Using needles size 4½ mm and Eco Alpaca, pick or knit up approx. 114-116-118-120-120-122 sts along front edge. Work back and forth 4 rows in St st. Bind off. Pick up same number of sts from WS, and work 4 rows in St st. Bind off. Work same for the other front edge. Sew zipper between front bands. Weave in all ends on WS.



□ = knit (K on RS, P on WS)

▣ = purl (P on RS, K on WS)

■ = sl 1 st, K2tog, psso

▤ = K2tog

▥ = sl 1 st, K1, psso

▦ = 1 vo

■ = 2 m rett sammen

▧ = sl 1 st on cn, hold to back, K1, knit 1 st from cn

▨ = sl 1 st on cn, hold to front, K1, knit 1 st from cn

1207-11

Size:	S/M	L/XL
Bust:	90	100 cm
	35.4	38.4 in
Length:	83	83 cm
	32.7	32.7 in

Dark Violet..468: 11 12 skeins

Long circular needle size 5 mm – US 8 – UK 6

Gauge: 18 sts = approx. 10 cm/4 in over St st using needles size 5 mm. **Check your gauge to ensure success.**

1st row: K1, P1

2nd row: Knit all knit-sts, purl all purl-sts

3th row: Knit all purl-sts, purl all knit-sts

4th row: As 2nd row

Rep 1st – 4th row

Beg from right front. Using needles size 5 mm, cast on 188-188 sts. Work back and forth 4 cm/1.8 in in K4,P4 rib, but when work measures 2 cm/0.8 in make one buttonhole: Beg from RS (= upper edge), work 4 sts, bind off next 3 sts (next row: cast on 3 sts over the bound-off sts). When ribbed edge is ready, cont working in patt as foll: Work Double Seed st over 34 sts, St st over 40 sts, patt 1 over 11 sts, patt II, patt 1, St st over 25 sts, patt 1, patt II, patt 1, end with 8 sts in Garter st. Cont working back and forth as established until work measures approx. 45-50 cm/17.7-19.7 in. Beg from RS, work in Double Seed st over 34 sts, bind off next 40 sts (= armhole), work rem sts as established. Next WS row: Cast on 40 sts over the bound-off armhole sts. Cont working back and forth same as before, until work measures 45-50 cm/17.7-19.7 in, measured from armhole. Bind off for the other armhole same as for the first one. Cont working until work measures approx. 41-46 cm/16.1-18.1 in, measured from the armhole. Cont working in rib, same as beg of the work. (Note! Remember buttonhole at the upper edge). Bind off in rib.

Using needles size 5 mm, pick or knit up approx. 80 sts around armhole. Work in rnds approx. 3 cm/1.2 in in K2,P2 rib. Bind off in rib.

Work same for the other armhole band.

Weave in all ends on WS.

Sew a button on WS of right front shoulder, inside armhole band.

Sew a button on RS of left front shoulder, inside armhole band.

Sew 1 duffel coat loop on left front, and a toggle on right front


(see photo).

□ = knit (K on RS, P on WS)

$$\boxed{v} = \text{purl} (P \text{ on RS, } K \text{ on WS})$$
$$\boxed{0} = 1 \vee 0$$

■ = sl 1 st, K2tog, pssso

over
 = sl 6 sts on cn, hold to back, K6, knit sts from cn

 = sl 6 sts on cn, hold to front,
K6, knit sts from cn

Viking Eco Alpaca – Fox4you

Vest with hood

1207-12

Size:	XS	S	M	L	XL	XXL
Bust:	85	90	95	102	110	118 cm
	33.5	35.4	37.4	40.2	43.3	46.4 in
Length:	73	74	75	76	76	77 cm
	28.7	29.1	29.5	29.9	29.9	30.3 in

ALTERNATIVE YARN: Viking Eco Alpaca (100% alpaca superfine), Viking Odin (100% wool, superwash), 100 g ball

Eco Alpaca

White, 400:	5	6	6	7	7	8 skeins
Dark Grey, 415:	1	1	1	1	1	1 skein
Light Grey, 413:	1	1	1	1	1	1 skein
Cherry, 463:	1	1	1	1	1	1 skein
Fox4you, 510	1	1	1	1	1	1 ball

Circular needle and double pointed needles size 4 ½ and 5 mm – US 7 and 8 –UK/Canadian 7 and 6 + circular needle size 8 mm – US 11 – UK/Canadian 0 for Fox4you. + 6 buttons

Gauge, Eco Alpaca: 18 sts = approx. 10 cm/4 in over St st using needles size 5 mm.

Gauge, Fox4you: 11 sts = approx. 10 cm/4 in over St st using needles size 8 mm. **Check your gauge to ensure success.**

Fox4you

Work with double yarn min 3 m/118.2 in when you start a new ball of yarn. You don't need to weave in the yarn ends, and you can cut the ends quite close to the sts.

VEST

Using needles size 5 mm and white Eco Alpaca, cast on 154-162-170-182-198-210 sts. Work back and forth 4 cm/1.6 in in K2,P2 rib. Place markers each side, 80-84-88-94-102-108 sts for back, and 37-39-41-44-48-51 sts for each front. Cont working back and forth in St st until work measures approx. 52-52-52-52-52 cm/20.5-20.5-20.5-20.5-20.5 in. Bind off 10 sts each side (5 sts both sides of the markers).

Cast on 60-64-68-68-72-72 sts over bound-off sts for the armholes, and 3 sts mid front to be cut open later on (these 3 sts are not incl. in the number of sts). Purl 3 mid front sts every rnd with basic clr. Cont working in rnds. Work 2 rnds in St st, and adjust evenly across 2nd rnd number of sts to be 251-263-275-287-311-323 sts. Cont working in rnds in patt as charted. Beg mid front as charted, and end patt before 3 purl-sts as the arrow points out. Dec as charted. When patt is ready, bind off 3 mid front sts. Cont working back and forth in St st with white yarn until work measures the given length. Dec evenly across last rnd number of sts to be 74-78-82-86-90-94 sts. Work back and forth 4 cm/1.6 in in K2,P2 rib.

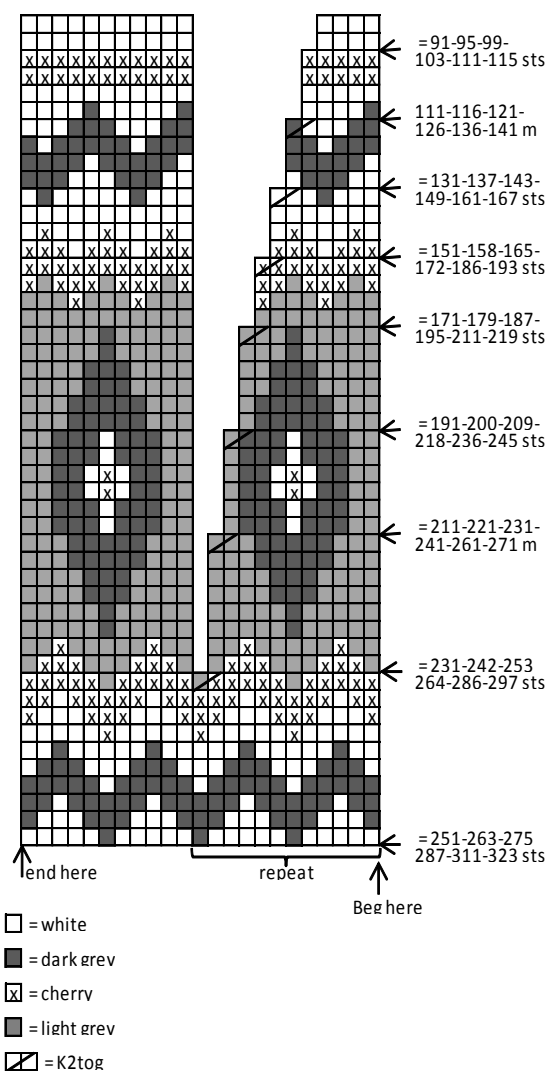
Hood: Cont working back and forth in St st until work measures approx. 27 cm/10.6 in. Slip sts on holders, and join top seam.

Armhole bands: Using needles size 4½ mm and white yarn, pick or knit up approx. 72-76-76-80-80-84 sts around armhole. Work in rnds 3 cm/1.2 in in K2,P2 rib. Bind off.

Left front band: Using needles size 4½ mm and white yarn, pick or knit up along front edge approx. 126-130-130-134-138-138 sts. Work back and forth 4 cm/1.6 in in K2,P2 rib. Bind off. Place markers for 6 buttons, one 12 cm/4.7 in from lower edge, and one approx. 2 cm/0.8 in from neck edge, rest evenly spaced apart.

Work same for right front band, but make buttonholes mid band. Buttonhole: Bind off 2 sts. Next row: Cast on 2 sts over the bound-off sts.

Front edge of the hood: Using needles size 8 mm and Fox4you, pick or knit up sts along hood edge (Note! Also over rib each side). Work back and forth 10 rows in Garter st (or until yarn finishes, take care that there is enough yarn left for binding off). Bind off. Twist a cord using grey Eco Alpaca, and place it over fur edge before folding the edge in double. Fold fur edge in double, and sew on WS using sewing thread.



Viking Eco Alpaca

Coat

1207-13

Size	XS	S	M	L	XL
Bust	90	96	103	111	118 cm
	35.4	38.8	40.9	43.7	46.4 in
Length	89	89	99	100	100 cm
	35	36	39	39.4	39.4 in
Sleeve length	47	48	48	50	51 cm
	18.5	18.9	18.9	19.7	20.1 in

ALTERNATIVE YARN: Eco Alpaca (100 % alpaca), 100 g skein, Viking Odin (100% wool, superwash), 100 g ball

White, 400 11 12 13 14 15 skeins

Circular needle and double pointed needles size 4½ and 5 - US 7 and 8 – UK/Canadian 7 and 6
+ 11-11-12-12-12 buttons

Gauge: 18 sts = approx. 10 cm/4 in over St st using needles size 5 mm. **Check your gauge to ensure success.**

COAT

Using needles size 5 mm, cast on 225-257-257-289-289 sts. Work back and forth 5 cm/2 in in St st. Cast on 8 sts beg and end of last row = front bands worked in Garter st. Cont working in patt A as charted, and Garter st over front bands, **but** after 2 cm/0.8 in, make a buttonhole to the right front band as foll: Work 3 sts, bind off 2 sts, next row: cast on 2 sts over the bound-off sts, work 3 sts. Make a buttonhole approx. every 10 cm/4 in = 9-9-9-10-10-10 buttonholes. and last one just before neck edge.

When patt is ready, adjust evenly across the rnd number of sts to be 238-268-268-298-298 sts. Divide work into six sections : Beg from RS, work front band sts, *K37-42-42-47-47, place a marker*, rep *-* altog 5 times, work rem sts as established.

Cont working in St st. Dec 1 st both sides of each marker, before a marker: K2togtbl; after a marker: K2tog. Rep dec approx. every 10-7-10-9-10 cm/4-2.8-4-3.5-4 in altog. 5-7-6-7-6 times = 188-198-208-228-238 sts. Cont working until work measures 66-65-74-74-74 cm/26-25.6-29.1-29.1-29.1 in, measured from 1st patt row = folding edge. Inc evenly across the row, inside front bands, 5-11-17-13-19 sts = 193-209-225-241-257 sts. Place new markers at each side: 8 sts (front band) + 43-47-51-55-59 sts for each front, and 91-99-107-115-123 sts for back. Work back and fronts separately.

Back

Cont working back and forth in patt as charted. When work measures the given length, and armhole measures 23-24-25-26-27 cm/9.1-9.4-9.8-10.2-10.6 in, dec evenly across last row number of sts to be 81-85-89-99-105 sts. Bind off.

Right front

Cont working back and forth with front band + patt B until work measures 82-82-92-93-92 cm/32.3-32.3-36.2-36.6-36.2 in (Note! Don't forget to make buttonholes). Bind off first 11-12-12-13-13 sts for neck edge. Cont working back and forth in patt same as before, but bind off at neck edge every 2nd row 1x5, 1x3, 1x2, and 1x1 st. Cont working until front measures same as back. Dec evenly across last row number of sts to be 25-26-28-32-35 sts. Bind off.

Left front: Work same as for right front, but rev all shaping.

Note: Beg patt from WS, so that patt is same both sides of mid front.

Sleeves

Using needles size 4½ mm, cast on 35-37-39-41-43 sts. Work back and forth 7 cm/2.8 in in Garter st. Change to needles size 5 mm. Cont working in rnds. Knit 1 rnd, and inc evenly across number of sts to be 43-47-49-51-53 sts. Place a marker mid under sleeve = first st on a rnd. Cont working in St st. Inc 1 st both sides of the marker every 2 cm/0.8 in until you have 83-87-91-93-97 sts on a rnd. When work measures the given length, or as desired, bind off rather loosely.

Finishing

Sew shoulder seams.

Neck band

Pick or knit up approx. 80-82-84-88-90 sts along neck edge. Work back and forth in K1,P1 rib. When neck band measures approx. 14 cm/5.5 in, make a buttonhole as foll: Work 3 sts, bind off 2 sts, next row: cast on 2 sts over the bound-off sts, work until 5 sts rem, bind off for buttonhole + 3 sts. When work measures approx. 16 cm/6.3 in, bind off all sts rather loosely. Fold neck band in double on RS. Sew one button to upper edge of each front band.

Sew on rest of the buttons.

Sew Garter st sleeve seams. Sew on sleeves.

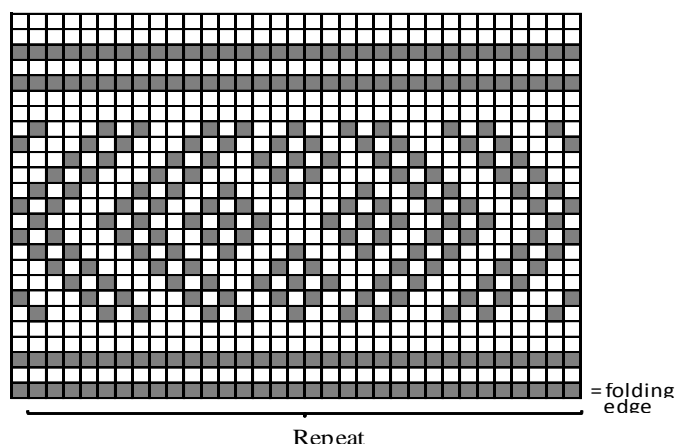
Pockets

Using needles size 5 mm, cast on 31 sts. Purl 1 row. Beg from RS, and work back and forth in patt B, but knit first and last st every row = selvage sts. When work measures 16 cm/6.3 in, work 8 rows in Garter st, and dec sts on last WS row.

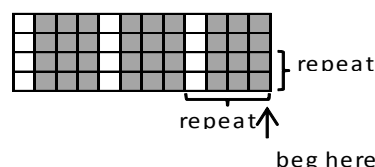
Sew pockets on fronts, approx. 20 cm/7.9 in from lower edge, and approx. 7-8 cm/2.8-3.1 in from front edge (see photo).

Weave in all ends on WS.

Pattern A



Pattern B



- ☐ = knit on RS, WS: sl st with varn in front of the work
- ☒ = purl on RS, knit on WS

Viking Eco Alpaca

Cardigan

1207-14

Size	XS	S	M	L	XL	XXL
Bust	88	96	103	112	118	128
	34.8	38.8	40.8	43.9	46.4	50.3
						in
Length	70	77	77	77	84	84
	27.6	30.3	30.3	30.3	33.1	33.1
						in
Sleeve length	47	48	49	50	51	51
	18.5	18.9	19.3	19.7	20.1	20.1
						in

ALTERNATIVE YARN: Eco Alpaca (100 % alpaca), 100 g skein, Viking Odin (100% wool, superwash), 100 g ball

Grey, 415 skeins	5 6	6	6	6	7
Violet, 468 skeins	3 3	3	3	3	4
Light Violet, 467 3 skeins	3	3	3	3	4
White, 400 skeins	2 2	2	2	2	3

Circular needle and double pointed needles size 5 mm – US 8 – UK/Canadian 6
+ 5-6-6-6-7-7 buttons

Gauge: 18 sts = approx. 10 cm/4 in over St st using needles size 5 mm. **Check your gauge to ensure success.**

Using needles size 5 mm and violet yarn, cast on 151-166-179-195-207-223 sts. Work back and forth 2 rows in Garter st. Place markers each side, 36-40-43-47-50-54 sts for each front, and 79-86-93-101-107-115 sts for back. Cont working in Garter st until work measures 7 cm/2.4 in = 1 stripe. Cont working with 7 cm/2.4 in stripes as foll: light violet, grey, white, light violet, violet, grey, white, violet **but work grey stripes in St st.** First grey stripe: Work approx. 4 cm/1.6 in, beg from RS, K8-10-12-13-15-17, work next 15 sts with extra length of yarn (= pocket), cont working with grey yarn until 23-25-27-28-30-32 sts rem, work next 15 sts with extra length of yarn, and work rest of the sts with grey yarn. When work measures 47-53-52-51-57-57 cm/18.5-20.9-20.5-20.1-22.4-22.4 in, divide work at sidemarkers, and finish back and fronts separately, cont working with stripes same as before.

Back

When work measures approx. 70-77-77-77-84-84 cm/27.6-30.3-30.3-30.3-33.1-33.1 in, and armhole measures 23-24-25-26-27-27 cm/8.3-9.4-9.8-10.2-10.6-10.6 in, bind off.

Right front

Work until front measures 63-70-70-70-76-76 cm/24.8-27.6-27.6-27.6-29.9-29.9 in, bind off 6-7-7-7-8-8 sts for neck edge. Bind off at neck edge every 2nd row 1x3, 1x2, and 1x1 st. When work measures same as back, bind off.

Left front

Work same as for right front, rev all shaping.

Sleeves

Using needles size 5 mm and grey yarn, cast on 38-40-42-44-46-48 sts. Work in rnds 7 cm/2.4 in in Garter st. Knit 1 rnd, and inc evenly across number of sts to be 42-46-48-52-54-54 sts. Place a marker mid under sleeve = beg of rnd. Cont working in St st, and inc 1 st both sides of the marker approx. every 2 cm/0.8 in until

you have 82-86-90-94-98-98 sts on a rnd. When work measures the given length, or as desired, bind off rather loosely.

Finishing

Sew shoulder seams.

Neck band

Using needles size 5 mm and grey yarn, pick or knit up along neck edge approx. 67-71-75-79-83-87 sts. Work back and forth 10 cm/4 in in St st. Knit 1 row from WS = folding edge + 10 cm/4 in in St st. Bind off rather loosely. Fold neck band in double, and sew on WS.

Front bands

Using needles size 5 mm and grey yarn, knit or pick up along left front edge and neck band approx. 130-144-144-144-154-154 sts. Work back and forth 4 cm/1.6 in in St st. Knit 1 row from WS = folding edge, + 4 cm/1.6 in St st. Bind off. Fold front band in double, and sew on WS.

Mark places for 5-6-6-6-7-7 buttons, one approx. 2 cm from upper edge, rest evenly spaced apart.

Right front band: Work same as for left front edge, but make buttonholes. Buttonhole: Bind off 2 sts. Next row: Cast on 2 sts over the bound-off sts. Make buttonholes when work measures 2 cm/0.8 in and again when work measures 6 cm/2.4 in.

Pockets

Pick up sts from **above and below** extra yarn. Remove the extra yarn. Work first upper edge sts. using needles size 5 mm and grey yarn, work approx. 12 cm/4.7 in in St st. Bind off. Work 12 cm/4.7 in in St st with the lower edge sts. Bind off. Sew pocket seams.

Work same for the other pocket..

Sew pockets on WS.

Sew on sleeves.

Sew o buttons.

Weave in all ends on WS.

Viking Eco Alpaca – Fox4you

Cardigan 1207-15

Size:	XS	S	M	L	XL	XXL
Bust:	85	90	95	102	110	118 cm
	33.5	35.4	35.7	40.2	43.3	46.4 in
Length:	73	74	75	76	76	77 cm
	28.7	29.1	29.5	29.9	29.9	30.3 in
Sleeve length:	50	51	51	52	52	52 cm
	19.7	20.1	20.1	20.5	20.5	20.5 in

ALTERNATIVE Yarn: Viking Eco Alpaca (100% alpaca superfine), Viking Odin (100% wool, superwash), 100 g ball

Pink, 466: 8 8 9 9 10 10 skeins

Circular needle and double pointed needles size 5 mm – US 8 – UK/Canadian 6

+ 3 pairs of duffel coat toggles

Gauge: 18 sts = approx. 10 cm/4 in over St st using needles size 5 mm.

PATENT:

Knit selvage sts every row.

1st row: 1 selvage st, *K1, 1 yo, sl 1 st tbl *, rep *-*, end with K1 + 1 selvage st.

2nd row: 1 selvage st, *1 yo, sl 1 st tbl, knit next st and yo tog*, rep *-*, end with 1 yo, sl 1 st tbl + 1 selvage st.

3rd row: 1 selvage st, *knit next st and yo tog, 1 yo, sl 1 st tbl*, rep *-*, end with knit next st and yo tog + 1 selvage st.

Rep 2nd and 3rd row.

CARDIGAN

Using needles size 5 mm, cast on 171-179-187-203-215-231 sts. Work back and forth 8 cm/3.1 in in Patent. Cont working in K1,P1 rib, until work measures 11 cm/4.3 in. Place markers each side, 89- 93-97-105-111-119 sts for back, and 41-43-45-49-52-56 sts for each front. Cont working in St st and cable patt as foll: 1 selvage st (knit every row), work in St st until 10 sts rem before side marker, work patt I as charted, work in St st until 10 sts rem before other side marker, work patt I as charted, work rem sts in St st (knit last st every row = selvage st). Cont working as established, but dec 2 sts each side approx. every 10th row altog. 8 times as foll: Work until 2 sts rem before cable patt, K2togtbl, work patt, K2tog after patt. Rep dec before and after the other cable patt. When work measures approx. 43-44-45-46-46-46 cm/16.9-17.3-17.7-18.1-18.1-18.1in, beg dec for V-neck. Dec 1 st at each edge inside selvage st, beg of row: K2tog; end of row: K2togtbl. Rep dec every 4th row. When work measures approx. 50-50-50-51-51-51 cm/19.7-19.7-19.7-20.1-20.1-20.1 in, bind off 20 sts at each side for armholes. Finish back and fronts separately.

Back

Cont working back and forth in St st until work measures approx. 73-74-75-76-76-77 cm/28.7-29.1-29.5-29.9-29.9-30.3 in, and armhole measures approx. 23-24-25-25-25-26 cm/9.1-9.4-9.8-9.8-9.8-10.2 in. Bind off.

Right front

Cont working back and forth in St st, and cont dec for V-neck. Rep dec altog. 16-16-16-17-17-17 times. When work measures same as back, bind off.

Work same for left front, rev all shaping.

Sleeves

Using needles size 5 mm, cast on 35-35-37-37-39-39 sts. Work back and forth same patent + rib edge as for body. Purl 1 row from WS, and inc evenly across number of sts to be 43 sts (same for all sizes). Cont working in rnds and rep patt II as charted (beg

and end as charted). Selvage sts = mid under sleeve. Inc 1 st both sides of the selvage sts approx. every 3rd rnd (Note! Work K1,P1 rib over the inc sts). When work measures the given length, and there is 83-87-91-91-91-95 sts on a rnd, divide work mid under sleeve. Cont working back and forth in patt until split measures approx. 4 cm/1.6 in. Bind off. Work same for the other sleeve.

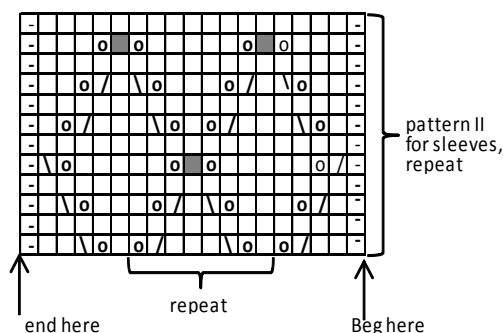
Finishing

Sew shoulder seams.

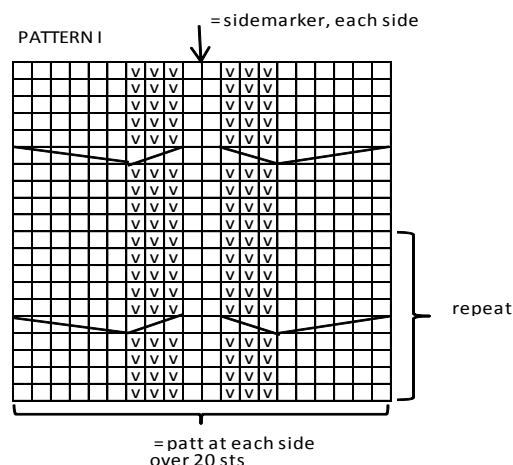
Collar/front bands: Beg from lower edge of right front. Using needles size 5 mm, knit up along front edge, back and down along left edge approx. 10-11 sts per 5 cm/2 in. Break yarn, and beg mid back with short rows as foll: Work 4 sts in K1,P1 rib, turn, and work 8 sts in rib, turn, and work 4 sts more after each turning (all sts are worked in rib) until you have reached first dec for V-neck on both fronts. Cont working K1,P1 rib over all sts. When front bans measure approx. 4 cm/1.8 in, bind off rather loosely.

Weave in all ends on WS.

Sew on sleeves. Sew on 3 duffel coat toggles, see photo.



- ☐ knit
- ☒ sl 1 st, K2tog, psso
- ☒ 2m rett sammen
- ☒ sl 1 st, K1, psso
- ☒ = 1 yo
- ☒ = purl



- ☐ = knit (K on RS, P on WS)
- ☒ = purl (P on RS, K on WS)
- ☒ = sl 6 sts on cn, hold to back, K2 to each next 3 sts (= 6 knit-sts), purl sts from cn tog in pairs (= 3 purl-sts).
- ☒ = sl 3 sts on cn, hold to front, purl next 6 sts tog in pairs (= 3 purl-sts), K2 to each 3 sts on cn (= 6 knit-sts).

Viking Eco Alpaca - Fox4You

Tunic and bag

1207-16

Size	S/M	L/XL	XXL
Bust	93	106	120 cm
	36.6	41.6	47.2 in
Length	74	76	78 cm
	29.1	29.9	30.7 in

GARNALTERNATIV: Eco Alpaca (100 % alpaca), 100 g skein, Viking Odin (100% wool, superwash), 100 g ball

TUNIC

Eco Alpaca

Navy Blue, 426 7 7 8 skeins

White, 400 1 1 1 skein

Fox4you

clr 512 1 1 1 ball

BAG

Fox4you

clr 512 2 balls

Circular needle and double pointed needles size 4½ and 5 mm – US 7 and 8 – UK/Canadian 7 and 6 + pair of needles size 8 mm – US 11 – UK/Canadian 0 for Fox4you fur yarn + chain for bag, and round «fur-jewelry», and a button

Gauge: Eco Alpaca: 18 sts = approx. 10 cm/4 in over St st using needles size 5 mm.

Fox4you: 11 sts = approx. 10 cm/4 in over St st using needles size 8 mm.

Check your gauge to ensure success.

Fox4you

Work with double yarn min 3 m/118.2 in when you start a new ball of yarn. You don't need to weave in yarn ends, and you can cut ends quite close to the sts.

Square patt: [*K12, P12*, rep *-* across the rnd. Rep for 14 rnds (knit all knit-sts, and purl all purl-sts). *P12, K12*, rep *-* across the rnd. Rep for altog 14 rnds]. Rep [-]

TUNIC

Using needles size 4½ mm and white Eco Alpaca, cast on 192-216-240 sts. Work in rnds 3 cm/1.2 in in St st. Work an eyelet rnd: *K2tog, 1 yo*, rep *-* across the rnd = folding edge.

Change to needles size 5 mm and navy blue. Place markers each side, 96-108-120 sts for both back and front. Beg with K6-0-P6, and cont in square patt until work measures 37 cm/14.6 in (same for all sizes). Dec 1 st both sides of the markers, before a marker: K2togtbl; after a marker: K2tog = 4 sts on a rnd. Rep dec every 3 cm/1.2 in altog. 6 times = 168-192-216 sts. Cont working in square patt until work measures 54 cm/21.3 in (all sizes), or as desired before armholes. Bind off 8-10-10 sts each side for armholes = 4-5-5 sts both sides of the markers. Finish back and front separately.

Back

Cont working back and forth in square patt. Bind off at each edge every 2nd row 1x3, 1x2, and 1x1 st. When work measures the given length, and armhole measures 20-22-24 cm/7.9-8.7-9.4 in, bind off.

Front

Work same as for back. When work measures 67-68-70 cm/26.4-26.8-27.6 in, bind off 12-16-20 mid sts for neck edge. Work each side separately.

Cont working back and forth in square patt. Bind off at neck edge every 2nd row 1x5, 1x3, 1x2, and 1x1 st = 19-22-27 sts.

When work measures same as back, bind off.

Work same for the other side, rev all shaping.

Short sleeves

Using needles size 4½ mm and white Eco Alpaca, cast on 62-70-76 sts. Work 3 cm/1.2 in in St st. Eyelet rnd: *K2tog, 1 yo*, rep *-* across the rnd = folding edge. Change to navy blue yarn.

Cont working 3 cm/1.2 in in St st. Change to needles size 5 mm.

Place a marker mid under sleeve. Cont working in Square patt as foll: P1-5-8, *K12, P12*, rep *-* until 1-5-8 sts rem, purl rem sts. Cont working Square patt until the end. Inc 1 st both sides of the marker approx. every 3 cm/1.2 in 5 times = 72-80-86 sts.

When work measures approx. 20 cm/7.9 in, measured from folding edge, bind off 8-10-10 sts mid under sleeve. Cont working back and forth in Square patt, and bind off at each edge every 2nd row 1x3, 1x2, and 1x1 st. bind off.

Work same for the other sleeve.

Finishing

Join shoulder seams.

Neck band

Using needles size 4½ mm and navy blue Eco Alpaca, knit or pick up approx. 76-82-90 sts along neck edge. Work in rnds 3 cm/1.2 in in St st. Change to white yarn, and knit 1 rnd. Work eyelet rnd same as for body + 3 cm/1.2 in in St st.

Bind off rather loosely.

Fold neck band in double, and sew on WS.

Sew on sleeves.

Weave in all ends on WS.

I-cord

Using dpn size 8mm and Fox4you, cast on 3 sts. Knit 3 sts. Do not turn. Slide sts from one end to the other. Hold yarn back of the work, knit 3 sts. Rep each row, and a round cord is formed. Cont working until cord measures approx. 65 cm/25.6 in, or desired length for the «necklace». Bind off.

Fasten cord at neck edge on right shoulder, leave it hanging like a necklace, and fasten the other end mid left shoulder. Twist a chain around the cord, and use sewing thread to sew the ends with few small sts.

BAG

Using circular needle size 8mm and Fox4you, cast on 44 sts.

Work in rnds in St st until work measures approx. 22 cm/8.7in, or you have used al yarn (Note: Leave enough yarn for binding off!). Bind off.

Sew bottom seam. Note: Check that fur points downwards.

Fasten chain for shoulder strap each side of the bag.