

Viking Superwash

Original Setesdal sweater 1206-1

Size	36	38	40/42	48/50	52	54
Bust/Chest	104	111	118	125	132	139 cm
	41	43.7	46.4	49.2	51.9	54.7 in
Length (with band)	66	67	68	70	72	74 cm
	26	26.4	26.8	27.6	28.3	29.1 in
Length						
(with shawl collar)	58	59	60	62	65	68 cm
	22.8	23.2	23.6	24.4	25.6	26.8 in
Sleeve length	44	46	48	50	52	52 cm
	17.3	18.1	18.9	19.7	20.5	20.5 in

ALTERNATIVE YARN: Viking Superwash (100% wool, superwash), Viking Alpaca Sport (30% alpaca, 40% merino wool, 30% nylon), Viking Sportsragg (60% wool, 20% nylon, 20% acrylic), Viking Sportsgarn (100% wool), 50 g ball

Sweater with band

Charcoal, 117	12	12	13	13	14	14 balls
White, 100	6	6	7	7	7	8 balls

Sweater with shawl collar

Charcoal, 117	10	10	11	11	12	12 balls
White, 100	8	8	9	9	10	10 balls

Circular needle and double pointed needles size 3 and 3½ mm – US 2 or 3 and 4 –UK/Canadian 11 and 10 or 9

Sweater with band (man): 4 buttons, 2 clasps + 3m band

Sweater with shawl collar (woman): 4 buttons.

Gauge: 23 sts = approx. 10 cm/4 in over St st using needles size 3 ½ mm. **Check your gauge to ensure success.**

TIP! When working a patt with 2 clrs, it's important to maintain the order of yarns on your finger. Always hold the darker clr in front throughout the whole project.

Using needles size 3 mm and white yarn, cast on 240–256–272–288–304–320 sts. Work in rnds in patt I. Change to needles size 3½ mm, and work in St st. When work measures 6–6–6–7–7–7 cm/2.4–2.4–2.4–2.8–2.8–2.8 in, work in patt II as charted. Place markers each side, 121–129–137–145–153–161 sts for front, and 119–127–135–143–151–159 sts for back.

Sweater with and: When work measures approx. 43–43–43–44–45–46 cm/ 16.9–16.9–16.9–17.3–17.7–18.1 in, bind off 15–15–15–17–17–7 mid front sts for neck edge. Next rnd: Cast on 4 new sts over the bound-off sts, and purl them each rnd (= will be cut open later on).

Sweater with shawl collar: When work measures approx. 35–35–35–36–38–40 cm/13.8–13.8–13.8–14.2–15–15.7 in, bind off 27–29–31–33–35–35 mid front sts for neck edge. Next rnd: Cast on 4 sts over the bound-off sts and purl them each rnd (= will be cut open later). Cont working in patt II, **and** dec 1 st at each neck edge inside 1 st (cast-on sts are not included). 2 sts at each edge are worked in basic clr each rnd. Rep dec approx. every 2½–3–3–3½–3½–4 cm/1–1.2–1.2–1.4–1.4–1.6 in altog. 8–8–8–7–7–7 times.

Both: When patt II is ready, work patt III as foll: Beg from left front, the arrow pointing out the size – back: beg from where arrow points out – right front: work same as left front, but in reverse. When patt III is ready, work St st with charcoal clr yarn until work measures the given length. Bind off.

Sleeves (both):

Cuffs: Using needles size 3 mm and charcoal clr yarn, cast on

51–53–55–57–60–63 sts. Work back and forth in St st. When work measures 8–8–9–9–10–10 cm/3.1–3.1–3.5–3.5–4–4 in, cast on 6 sts beg of row, and 15 sts end of row (= RS row). Knit 1 row over all sts (= folding edge) = 74–76–78–80–83–86 sts on a row. Work patt I over 8 sts (= buttonband), St st over 58–60–62–64–67–70 sts, P1 (= for folding), and St st over 7 sts. When work measures 2–2–2–2–3–3 cm/ 0.8–0.8–0.8–0.8–1.2–1.2 in, measured from folding edge, make 2 buttonholes over 3 sts (Buttonhole: Bind off 3 sts. Next row: Cast on 3 new sts over cast-on sts), placed 3 sts on both sides of the purl-st. When work measures 5–5–6–6–7–7 cm/2–2–2.4–2.4–2.8–2.8 in, make another 2 buttonholes. When cuff measures 8–8–9–9–10–10 cm/3.1–3.1–3.5–3.5–4–4 in. Bind off first and last 8 sts = 58–60–62–64–67–70 sts.

Change to needles size 3½ mm- Knit 1 rnd, and inc evenly across number of sts to be 65–67–67–69–69–71 sts. Place a marker on left side, 12 sts before the cuff split (= mid under right sleeve) Work patt A as charted, **and** inc 1 st both sides of the marker approx. every 1½–1½–1–1–1–1 cm/0.6–0.6–0.4–0.4–0.4–0.4 in until you have 109–115–121–125–129–133 sts on a row.

When patt A is ready, cont working in St st with charcoal clr yarn until sleeve measures 44–46–48–50–52–52 cm/ 17.3–18.1–18.9–19.7–20.5–20.5 in. Turn work inside out, and work 6 rnds in St st. Bind off.

Left sleeve: **Work same as for left sleeve, but cuff is worked in reverse.**

Finishing: Dampen work slightly from WS. Sew 2 smallest zigzag seams around armholes (= measure from sleeve top) and mid front split. Cut open between seams. Sew normal zigzag over cut edges.

Sweater with band: Join shoulder seams, 38–41–45–48–51–54 sts for each shoulder. Thread a yarn to mark the neckline, approx. 7–7–7–8–8–8 cm/2.8–2.8–2.8–3.1–3.1–3.1 in below upper edge.

Neck border + front border with band: Beg from right front split. Using needles size 3 mm and charcoal clr yarn, pick or knit up along split edge approx. 37–39–41–41–43–46 sts, approx. 20–20–20–22–22–24 sts along the marked neck line, sts from back, and same number from left front as from right. Place markers in each split corner. Work back and forth in St st, and inc 1 st both sides of the markers every 2nd row. When work measures 4 cm/1.6 in, knit 1 row from WS (= folding edge). Work correspondingly, but dec 1 st both sides of the markers every 2nd row.

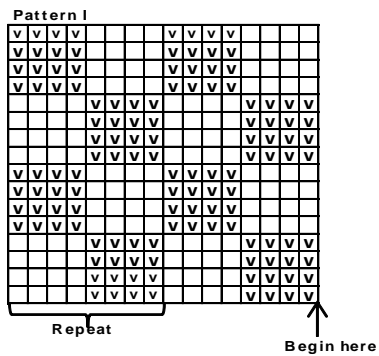
Bind off rather loosely.

Sew 2 smallest zigzag seams along innerside of neck edge. Cut off extras. Sew normal zigzag over cut edges. Fold neck border in double over cut edge, and sew on WS. Sew ends of front borders to the bound-off sts of the split. Sew on the band.

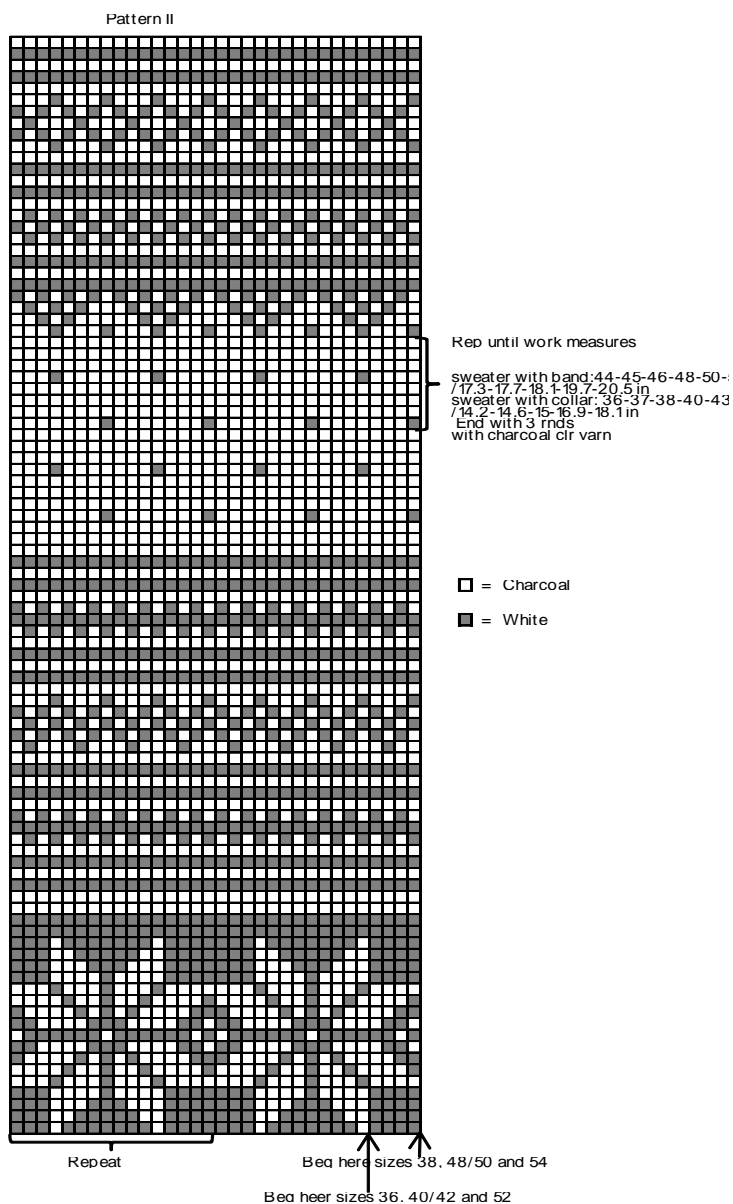
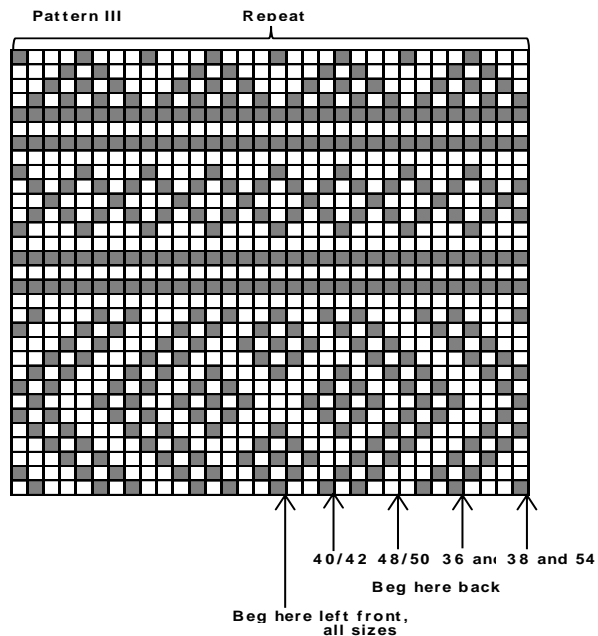
Sweater with shawl collar: Join shoulder seams. Beg from right front, using needles size 3½ mm and white yarn, pick or knit up approx. 56–59–60–64–65–68 sts along front, 44–46–48–48–50–52 sts from back, and approx. 56–59–60–64–65–68 sts from left front. Work back and forth in patt I approx. 12–13–14–14–15–15 cm/ 4.7–5.1–5.5–5.5–5.9–5.9 in (end with a complete square). Bind off knit-sts knitwise, and purl-sts purlwise. Take care that the edge doesn't turn too tight. Place front edges on top of each other, and sew to bound-off sts of the split.



Pick up from WS, 56–59–60–64–65–68 sts along right edge. Work 4 rows in St st. Work same for left edge. Sew over cut edges.

Both: Join shoulder seam. Sew seam allowances over cut edges. Fold cuff seam allowances on WS. Sew on bands.

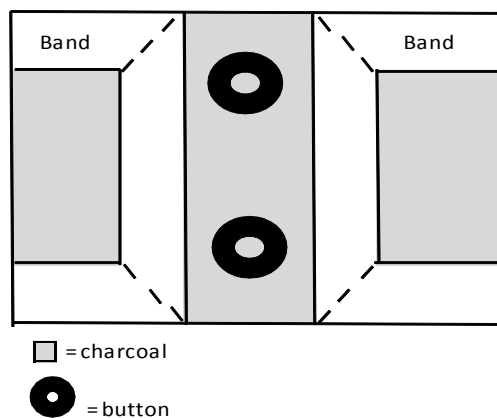


 = purl
 = knit

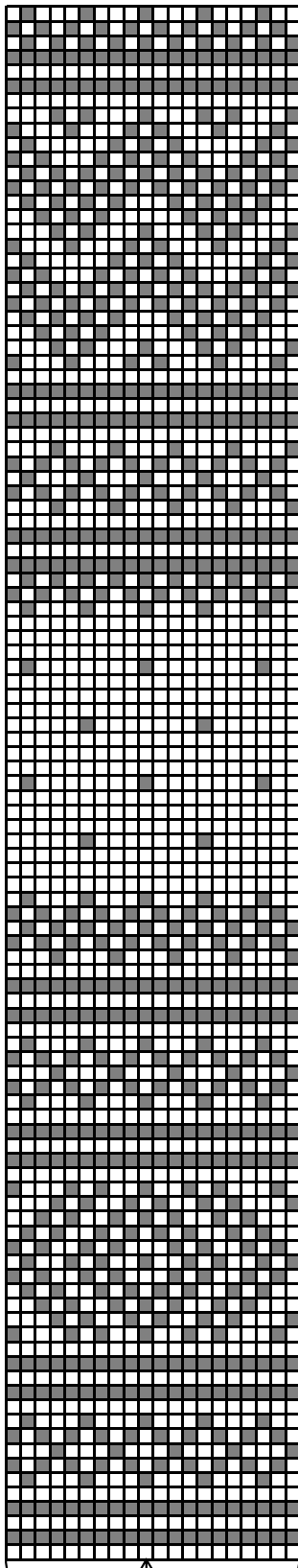


 = Charcoal
 = White

Cuff with band



Mønster A



NB! = ERM ETEGNING
TIL 1206-1

Gjentas til ermet måler
ca 28 - 30 - 32 - 34 - 36
36 cm eller ønsket lenade.

Slutt med 3 omg alattstrikk

Gjentas

Midt på ermet

Viking Superwash

Cardigan

1206-2

Size	XS	S	M	L	XL	XXL
Bust	99	107	114	121	128	135 cm
	39	42.2	44.9	47.6	50.4	53.1 in
Length	65	66	67	68	70	72 cm
	25.6	26	26.4	26.8	27.6	28.3 in
Sleeve length	48	49	50	51	52	52 cm
	18.9	19.3	19.7	20.1	20.5	20.5 in

ALTERNATIVE Yarn: Viking Superwash (100% wool, superwash), Viking Alpaca Sport (30% alpaca, 40% merino wool, 30% nylon), Viking Sportsragg (60% wool, 20% nylon, 20% acrylic), Viking Sportsgarn (100% wool), 50 g ball

Charcoal, 117	10	10	11	11	12	12 balls
White, 100	8	8	8	8	9	9 balls

Circular needle and double pointed needles size 3 and 3½ mm – US 2 or 3 and 4 – UK/Canadian 11 and 10 or 9 + 8 buttons

Gauge: 23 sts = approx. 10 cm/4 in over St st using needles size 3½ mm. **Check your gauge to ensure success.**

TIP! When working a patt with 2 clr, it's important to maintain the order of yarns on your finger. Always keep the darker clr in front throughout the whole project.

Using needles size 3mm and white yarn, cast on 216 – 232 – 240 – 256 – 272 – 288 sts. Work back and forth in patt I, **but** mid 3rd square in height, make 1 buttonhole on right front band, inside 5 sts from front edge. Buttonhole: Bind off 3 sts. Next row: Cast on 3 sts over the bound-off sts. When patt I is ready, slip 12 first and last sts on holders (= sts for front bands). Change to needles size 3½ mm. Cast on 4 new sts (= purl each rnd, to be cut later on, not incl in the number of sts) mid front, and cont working in rnds. Work in St st, and inc evenly across 1st rnd number of sts to be 225–241–257–273–289–305 sts (front band sts not incl). When work measures 6–6–6–7–7–7 cm/2.4–2.4–2.4–2.8–2.8–2.8 in, work patt II as charted. When patt II is ready, cont working in St st with charcoal clr yarn until work measures 65–66–67–68–70–72 cm/25.6–26–26.4–26.8–27.6–28.3 in. Bind off. or slip sts on a thread.

Sleeves: Using needles size 3mm and charcoal clr yarn, cast on 46–48–48–50–50–52 sts. Work in rnds 5–5–6–6–7–7 cm/2–2–2.4–2.4–2.8–2.8 in in K1,P1 rib. Change to needles size 3½ mm. Knit 1 rnd, and inc evenly across number of sts to 65–67–67–69–69–71 sts. Place a marker beg of rnd (= mid under sleeve). Work patt A as charted, **and** inc 1 st both sides of the marker approx. 2–1½–1½–1½–1½–1½ cm /0.8–0.6–0.6–0.6–0.6–0.6 in. **Note!** If you wish to have longer sleeves, add extra dotted rnds.

When patt A is ready, cont working in St st with charcoal clr yarn until work measures 48–49–50–51–52–52 cm/18.9–19.3–19.7–20.1–20.5–20.5 in, and you have 109–115–121–125–129–129 sts on a rnd. Turn work inside out, and work 6 rnds in St st for seam allowance. Bind off.

Finishing: Dampen pieces slightly from WS. Sew 2 smallest zigzag seams around armholes (= measures width from sleeve top) and mid front. Cut open between seams. Sew normal zigzag over cut edges. Join shoulder seams, 35–38–41–45–48–51 sts for each shoulder.

Front bands: Slip 12 sts (= buttonband) from holder on needles size 3 mm. Cast on 4 new sts with white yarn to the edge facing front piece. Work these 4 sts in St st (= seam allowance). Work in patt I until front band measures approx. 7–7–7–8–8–8 cm/2.8–2.8–2.8–3.1–3.1–3.1 in less than the total length, end with a

complete square, bind off seam allowance sts, and slip rem 12 sts on holder. (It's important that the front band doesn't turn too long, rather make it little bit shorter).

Work same for the other front band, but make 8 buttonholes evenly spaced apart. First buttonhole has already been made, and last one will be made mid neck band.

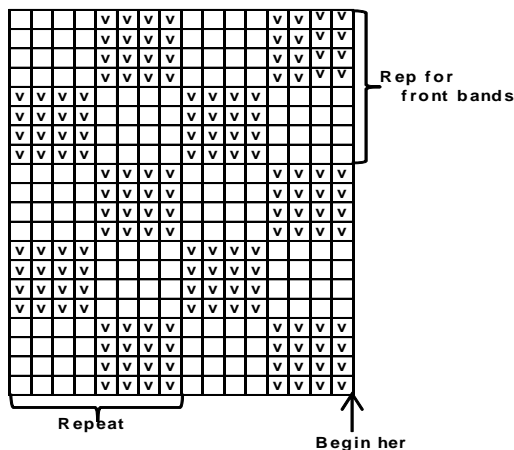
Neck band: Thread a yarn to mark front neckline, approx. 7-7-7-8-8-8 cm/2.8-2.8-2.8-3.1-3.1 in below upper edge. Beg from RS, right front edge, using needles size 3 mm and white yarn, slip on sts from holder, pick up approx. 27-28-29-30-31-32 sts along marked front neckline, 42-44-46-48-50-52 sts from back, 27-28-29-30-31-32 sts along left front neckline, and finally slip on sts from holder = approx. 120-124-128-132-136-140 sts on a row. Work back and forth in patt I. (Check that square patt matches with front bands). Work 3 squares in height. Bind off knit-sts knitwise, and purl-sts purlwise. Sew 2 smallest zigzag seams along innerside of neckline. Cut off extras. Sew normal zigzag over cut edge.

Pick up approx. 27-28-29-30-31-32 sts from WS along front neckline. Work 4 rows in St st for seam allowance. Bind off.

Work same for the other side of front neckline. Sew seam allowances over cut edges.

Finishing: Sew on front bands, and seam allowances over on WS over cut edges. Sew on sleeves, and seam allowances. Sew on buttons. Weave in all ends on WS.

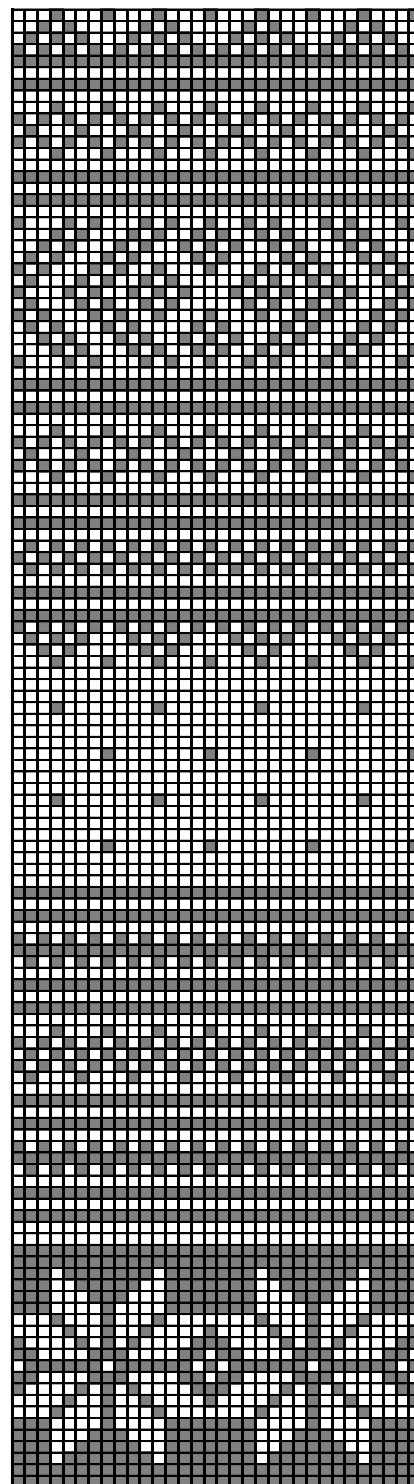
Pattern I





 = purl

 = knit

Pattern II



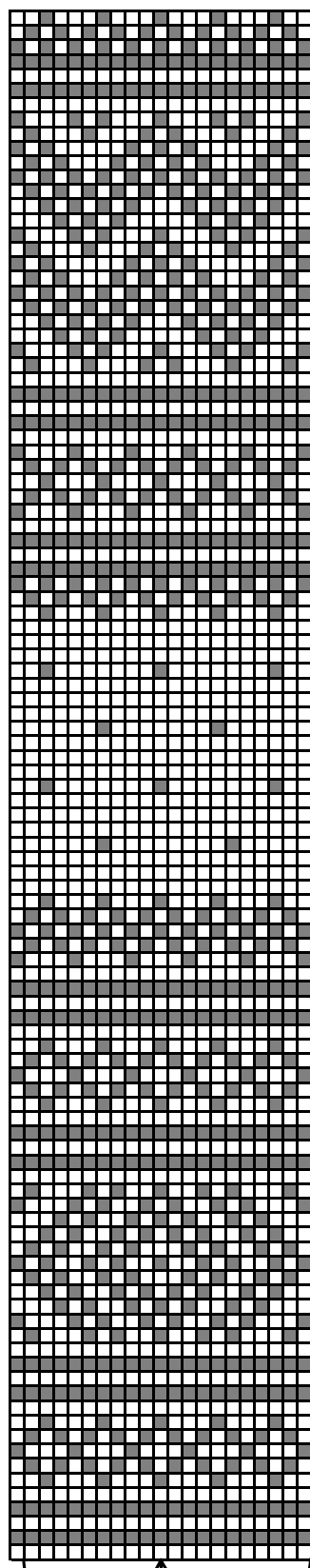
 = charcoal

 = white

Rep until work measur
approx. 42 - 43 - 44 -
47 - 49 cm/16.5-16.9-1
18.5-19.3 in
End with 3 rnds
with charcoal

Begin here sizes XS, M
and XL
Begin here sizes S, L and XXL

PATTERN A



NB! = ERMETEGNING
TIL 1206-2

Rep until sleeve measures
approx. 32-33-34-35-36-36 cm
12.1 eller ønsket længde.
End with 3 rnds in charcoal

Repeat
Mid sleeve

Viking Superwash

Cardigan

1206-3

Size	36	38	40/42	48/50	52	54
Bust/Chest	99	107	114	121	128	135 cm
	39	42.2	44.9	47.6	50.4	53.1 in
Length,	65	66	67	68	70	72 cm
	25.6	26	26.4	26.8	27.6	28.3 in
Sleeve length	48	49	50	52	54	55 cm
	18.9	19.3	19.7	20.5	21.3	21.7 in

ALTERNATIVE YARN: Viking Superwash (100% wool, superwash), Viking Alpaca Sport (30% alpaca, 40% merino wool, 30% nylon), Viking Sportsragg (60% wool, 20% nylon, 20% acrylic), Viking Sportsgarn (100% wool), 50 g ball

Grey, 115	14	14	15	15	16	17 balls
White, 100	4	4	5	5	6	6 balls

Circular needle and double pointed needles size 3 and 3½ mm – US 2 or 3 and 4 – UK/Canadian 11 and 10 or 9 + 8 buttons

Gauge: 23 sts = approx. 10 cm/4 in over St st using needles size 3½ mm. **Check your gauge to ensure success.**

TIP! When working a patt with 2 clrs, it's important to maintain the order of yarns on your finger. Always hold the darker yarn in front throughout the whole project.

Using needles size 3 mm and grey yarn, cast on 217–233–245–255–271–285 sts. Work back and forth in K1,P1 rib. When work measures approx. 3–3–3–3½–3½–3½ cm/1.2–1.2–1.2–1.4–1.4–1.4 in, make 1 buttonhole inside 5 sts on right front band (woman), and on left front band (man). Buttonhole: Bind off 3 sts. Next row: Cast on 3 sts over bound-off sts. When rib measures 6–6–6–7–7–7 cm/2.4–2.4–2.4–2.8–2.8–2.8 in, slip first and last 12 sts on holders (= front bands, worked later on). Change to needles size 3½ mm. Knit 1 row, and inc evenly across number of sts to be 225–241–257–273–289–305 sts (front band sts not included). Cast on 4 new sts to the end of row, purl each rnd (= to be cut open later on). Cont working in rnds in patt I as charted until work measures approx. 65–66–67–68–70–72 cm/25.6–26–26.4–26.8–27.6–28.3 in. If you wish to adjust the length, do it while working in St st. Bind off, or slip sts on a thread.

Sleeves: Using needles size 3 mm and grey yarn, cast on 46–48–48–50–50–52 sts. Work in rnds 5–5–6–6–7–7 cm/ 2–2–2.4–2.4–2.8–2.8 in in K1,P1 rib. Change to needles size 3½ mm. Knit 1 rnd, and inc evenly across number of sts to be 65–67–67–69–69–71 sts. Place a marker beg of rnd (= mid under sleeve). Work in patt II as charted, **and** inc 1 st both sides of the marker approx. every 2–1½–1½–1½–1½–1½ cm/0.8–0.6–0.6–0.6–0.6–0.6 in. When patt II is ready, cont working in St st with grey yarn until sleeve measures approx. 48–49–50–52–54–55 cm/18.9–19.3–19.7–20.5–21.3–21.7 in, and you have 109–115–121–125–129–133 sts on a rnd. Turn work inside out, and work 6 rnds in St st for seam allowance. Bind off.

Finishing: Dampen pieces slightly from WS. Sew 2 smallest zigzag seams around armholes (= measure width from sleeve top), and mid front. Cut open between seams. Sew normal zigzag seam over cut edges. Join shoulder seams, 35–38–41–45–48–51 sts for each shoulder.

Front bands: Slip 12 sts for buttonband on needles size 3 mm. Cast on 4 sts to the edge facing front piece. Work these 4 sts in St st (= seam allowance). Work in rib until front band measures approx. 7–7–7–8–8–8 cm/2.4–2.4–2.4–2.8–2.8–2.8 in less than total length. Bind off seam allowance sts, and slip rem 12 sts on holder (it's important that the front band doesn't turn too long,

rather make it little bit shorter).

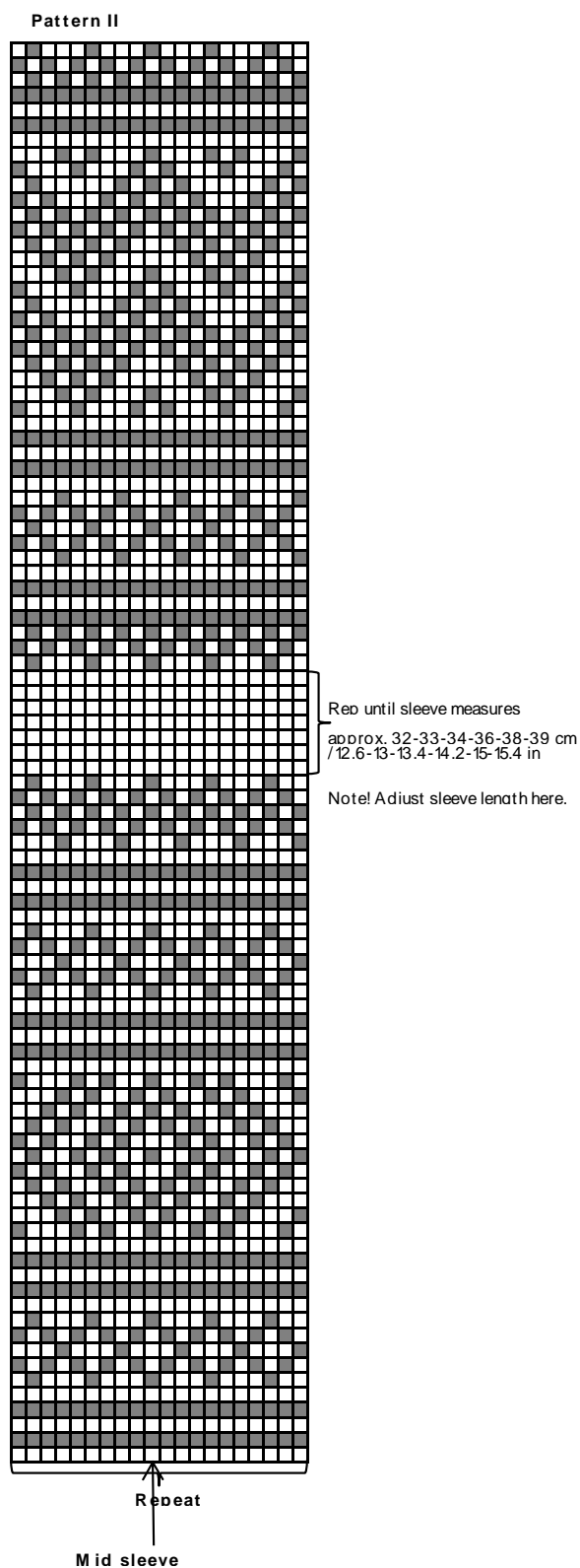
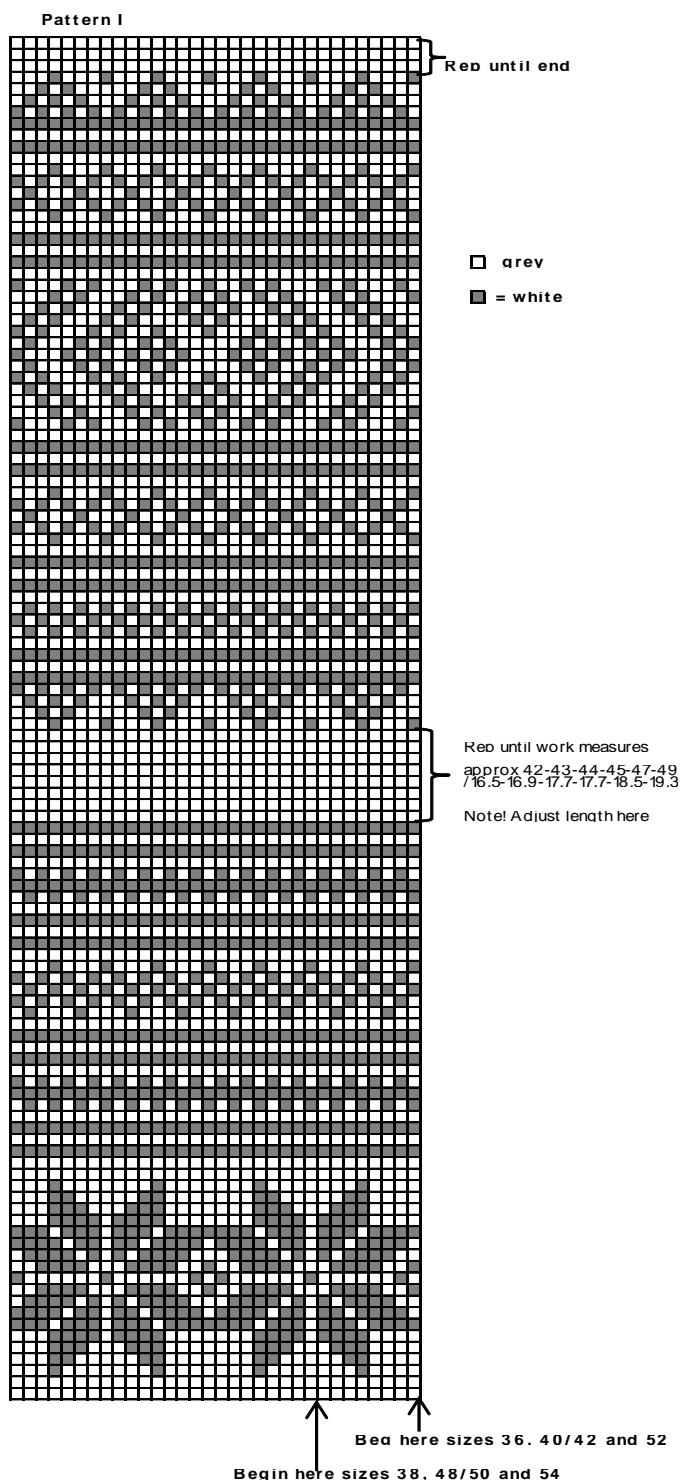
Work same for the other front band, but make 8 buttonholes evenly spaced apart. First buttonhole has already been made, and last one will be made mid neck band.

Neck band: Thread a yarn to mark front neckline, approx. 7-7-7-8-8-8 cm/2.4-2.4-2.4-2.8-2.8-2.8 in below upper edge. Using needles size 3 mm and grey yarn, pick sts from neck edge. Beg from RS, slip right front band sts on needles, pick approx. 27-28-29-30-31-32 sts along front neckline, 43-45-47-47-49-51 sts from back, 27-28-29-30-31-32 sts along left front, and slip left front band sts on needles = approx. 121-125-129-131-135-139 sts on a row. Work back and forth in K1,P1 rib. When work measures approx. 3-3-3-3½-3½-3½ cm/1.2-1.2-1.2-1.4-1.4-1.4 in, bind off first and last 12 sts in rib. Cont working until neck band measures 6-6-6-7-7-7 cm/2.4-2.4-2.4-2.8-2.8-2.8 in. Bind off in rib.

Sew 2 smallest zigzag seams along innerside of neckline. Cut off

extras. Sew normal zigzag seam over cut edge.

Finishing: Sew on front bands, and seam allowances. Fold neck band in double over cut edge, and sew on WS. Sew on sleeves, and seam allowances. Sew on buttons. Weave in all ends on WS.



Viking Superwash

Sweater

1206-4

Size	36	38	40/42	48/50	52	54
Bust/Chest	97	104	111	118	125	132 cm
	38.2	41	43.7	46.4	49.2	51.9 in
Length	65	66	67	68	70	72 cm
	25.6	26	26.4	26.8	27.6	28.3 in
Sleeve length, approx.	48	49	50	52	53	54 cm
	18.9	19.3	19.7	20.5	20.9	21.3 in

ALTERNATIVE YARN: Viking Superwash (100% wool, superwash), Viking Alpaca Sport (30% alpaca, 40% merino wool, 30% nylon), Viking Sportsragg (60% wool, 20% nylon, 20% acrylic), Viking Sportsgarn (100% wool), 50 g ball

Grey, 115 (White, 100) 12 12 13 13 14 14 balls
White, 100 (Grey, 115) 6 7 7 8 8 8 balls

Circular needle and double pointed needles size 3 and 3½ mm – US 2 or 3 and 4 – UK/Canadian 11 and 10 or 9

Gauge: 23 sts = approx. 10 cm/4 in over St st using needles size 3½ mm. **Check your gauge to ensure success.**

TIP! When working in a patt with 2 clrs, it's important to maintain the order of yarns on your finger. Always hold the darker clr in front throughout the whole project.

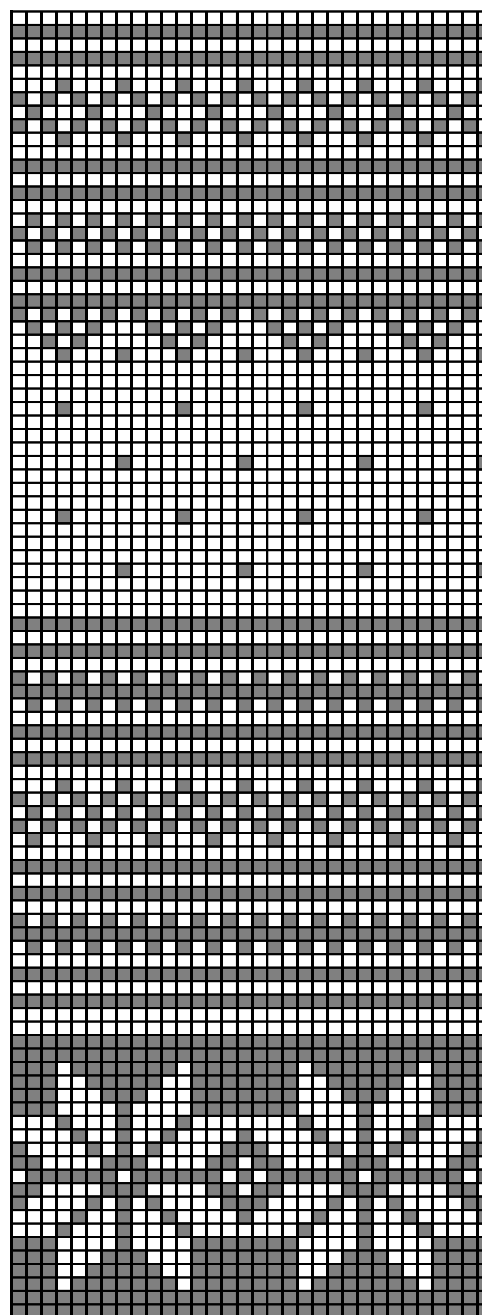
Using needles size 3 mm and white (grey) yarn, cast on 192–208–220–230–246–260 sts. Work in rnds 6–6–6–7–7–7 cm/2.4–2.4–2.4–2.8–2.8–2.8 in in K1,P1 rib. Change to needles size 3½ mm. Work in patt I as charted, and inc evenly across 1st rnd number of sts to be 224–240–256–272–288–304 sts. Place markers each side, 113–121–129–137–145–153 sts for front, and 111–119–127–135–143–151 sts for back. When patt I is ready, work patt II and purl first and last st on front (= to be cut open later on). Beg and end patt II from arrow, both front and back (patt is same for back and front). When patt II is ready, cont working in St st with grey (white) yarn, until work measures 65–66–67–68–70–72 cm/25.6–26–26.4–26.8–27.6–28.3 in. Bind off.

Sleeves: Using needles size 3 mm and grey (white) yarn, cast on 46–48–48–50–50–52 sts. Work in rnds 5–5–6–6–7–7 cm/2–2–2.4–2.4–2.8–2.8 in in K1,P1 rib. Change to needles size 3½ mm. Knit 1 rnd, and inc evenly across number of sts to be 65–67–67–69–69–71 sts. Place a marker beg of rnd (= mid under sleeve). Work in patt III as charted, **and** inc 1 st both sides of the marker approx. every 2–1½–1½–1½–1½–1½ cm/0.8–0.6–0.6–0.6–0.6–0.6 in. When patt III is ready, cont working in St st with grey (white) yarn until work measures 48–49–50–52–53–54 cm/18.9–19.3–19.7–20.5–20.9–21.3 in, and you have 109–115–121–125–129–133 sts on a rnd. Turn work inside out, and work 6 rnds in St st for seam allowance. Bind off.

Finishing: Dampen work slightly from WS. Sew 2 smallest zigzag seams around armholes (= measure width from sleeve top). Cut open between seams. Sew normal zigzag seam over cut edges. Join shoulder seams, 35–38–41–45–48–51sts for each shoulder. Thread a yarn to mark front neckline, approx. 7–7–7–8–8–8 cm/2.4–2.4–2.4–2.8–2.8–2.8 in below upper edge. Knit up with grey (white) yarn, approx. 59–61–63–65–67–69 sts along marked front neckline (check that patt is the same both sides of the neck edge), + sts from back = altog. 100–104–108–110–114–118 sts. Knit 1 rnd, and cont working in K1,P1 rib until neck band measures 7–7–7–8–8–8 cm/2.4–2.4–2.4–2.8–2.8–2.8 in. Bind off rather loosely in rib. Sew 2 smallest zigzag seams innerside of the neck edge. Cut off extras. Sew normal zigzag over cut edge. Fold neck band in double over cut edge, and sew on WS.

Sew on sleeves. Sew seam allowances over cut edges. Weave in all ends on WS.

Pattern I



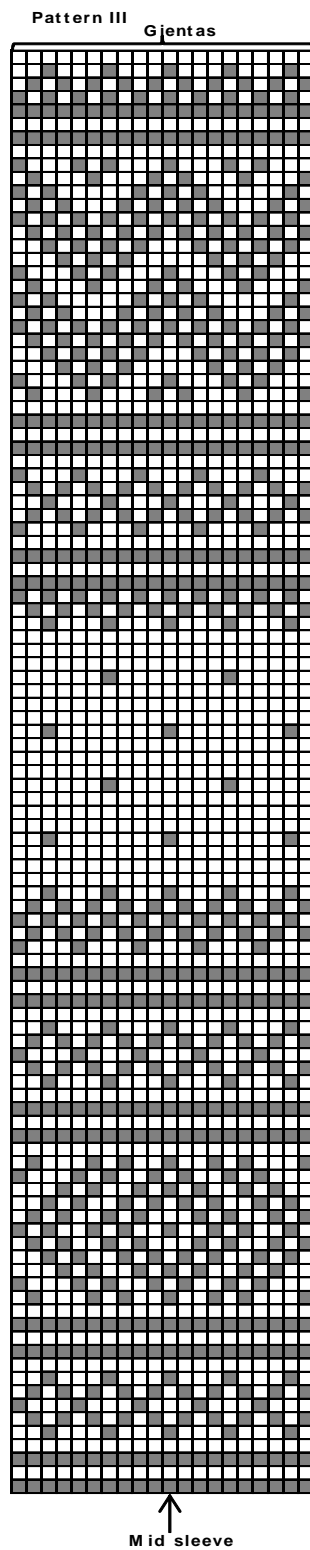
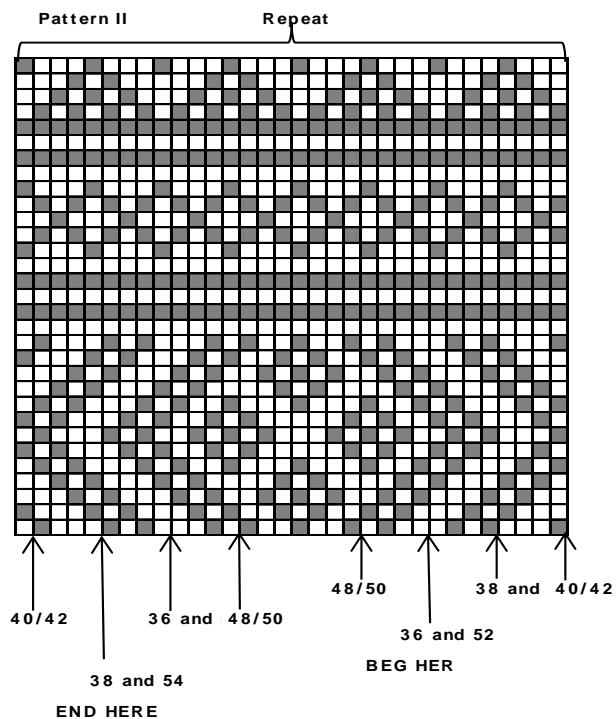
■ : White (Grey)

□ : Grey (White)

Rep until sleeve measures approx. 32-33-34-36-37- / 12.6-13-13.4-14.2-14.6-15 i

End with 3 rnds with a rev v
Note! Adjust length here

Bea here sizes 36. 40/42 an
Bea here sizes 38. 48/50 and 54



■ : White (Grev)

□ : Grev (White)

Rep until sleeve measures
approx. 32-33-34-36-38-39 cm
/ 12.6-13-13.4-14.2-15-15.4 in
End with 3 rnds with arev (white) var
Note! Adjust length here

VikingSuperwash

Sweater

1206-5

Size	36	38	40/42	48/50	52	54
Bust/Chest	97	104	111	118	125	132 cm
	36.2	41	43.7	46.4	49.2	51.9 in
Length	65	66	67	68	70	72 cm
	25.6	26	26.4	26.8	27.2	27.6 in
Sleeve length	48	49	50	52	54	55 cm
	18.9	19.3	19.7	20.5	21.3	21.7 in

ALTERNATIVE YARN: Viking Superwash (100% wool, superwash), Viking Alpaca Sport (30% alpaca, 40% merino wool, 30% nylon), Viking Sportsragg (60% wool, 20% nylon, 20% acrylic), Viking Sportsgarn (100% wool), 50 g ball

Black, 103 14 14 15 15 16 16 balls
Off-White, 102 4 4 5 5 6 6 balls

Circular needle and double pointed needles size 3 and 3½ mm – US 2 and 3 or 4 – UK/Canadian 11 and 10 or 9

Gauge: 23 sts = approx. 10 cm/4 in over St st using needles size 3½ mm. **Check your gauge to ensure success.**

TIP! When working in patt with 2 clrs, it's important to maintain order of yarns on your finger. Always hold darker clr in front throughout the whole project.

Using needles size 3mm and black yarn, cast on 192 – 208 – 220 – 230 – 246 – 260 sts. Work in rnds 6–6–6–7–7–7 cm/2.4-2.4-2.4-2.8-2.8-2.8 in in K1,P1. Change to needles size 3½ mm. Cont working in St st, and inc evenly across 1st rnd number of sts to be 224–240–256–272–288–304 sts. Place markers each side, 113–121–129–137–145–153 sts for front, and 111–119–127–135–143–151 sts for back. When work measures approx. 37–38–39–40–42–44 cm/14.6-15-15.4-15.7-16.5-17.3 in, work patt I. When patt I is ready, work patt II and purl first and last st on front (= to be cut open later on). Beg patt II where the arrows point out, both front and back (patt is same for front and back). When patt II is ready, cont working in St st with black yarn until work measures approx. 65–66–67–68–70–72 cm/25.6-26-26.4-26.8-27.6-28.3 in. Bind off

Sleeves: Using needles size 3mm and black yarn, cast on 46–48–48–50–50–52 sts. Work in rnds 5–5–6–6–7–7 cm/2-2-2.4-2.4-2.8-2.8 in in K1,P1 rib. Change to needles size 3½ mm. Work in St st, and inc evenly across 1st rnd number of sts to be 65–67–67–69–69–71 sts. Place a marker beg of rnd (= mid under sleeve). Cont working in St st, **and** inc 1 st both sides of the marker approx. every 2–1½–1½–1½–1½–1½ cm/0.8-0.6-0.6-0.6-0.6-0.6 in. When sleeve measures approx. 29–30–31–33–34–35 cm/11.4-11.8-12.2-13-13.4-13.8 in, work patt III as charted (check from mid st where to beg patt). Cont working in St st with black yarn until sleeve measures 48–49–50–52–54–55 cm/18.9-19.3-19.7-20.5-21.3-21.7 in, and you have 109–115–121–125–129–133 sts. Turn work inside out, and work 6 rnds in St st for seam allowance. Bind off.

Finishing: Dampen pieces slightly from WS. Sew 2 smallest zigzag seams around armholes (=measure width from sleeve top). Cut open between seams. Sew normal zigzag over cut edges. Join shoulder seams, 35–38–41–45–48–51 sts for each shoulder.

Neck band: Thread a yarn to mark front neckline, approx. 7–7–7–8–8–8 cm/2.4-2.4-2.4-2.8-2.8-2.8 in below upper edge. Using needles size 3 mm and black yarn, pick or knit up along marked neckline approx. 59–61–63–65–67–69 sts (check that patt is the same both sides of the neck edge), + sts from back = alt. approx. 100–104–108–110–114–118 sts. Knit 1 rnd, and cont working in

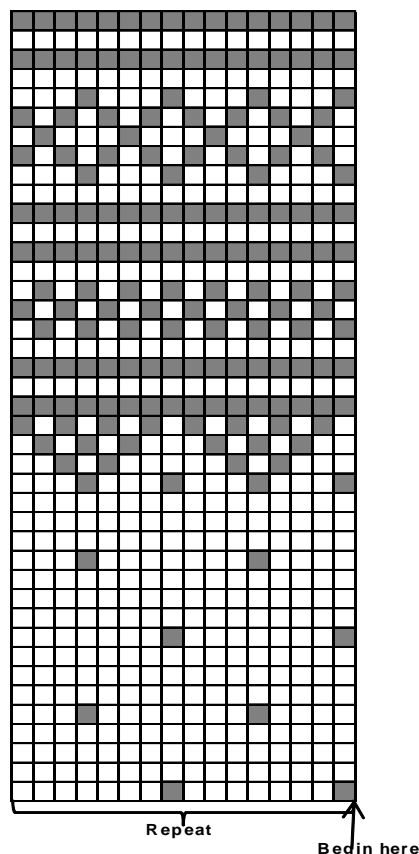
K1,P1 until neck band measures 7–7–7–8–8–8 cm/2.4-2.4-2.4-2.8-2.8-2.8 in. Bind off rather loosely in rib. Sew 2 smallest zigzag seams along innerside of neck edge. Cut off extras. Sew normal zigzag over cut edge.

Fold neck band in double over cut edge, and sew on WS.

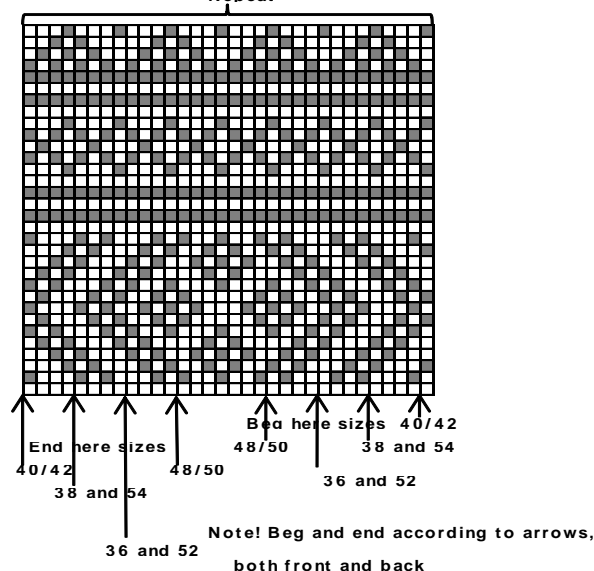
Finishing: Sew on sleeves. Sew seam allowances over cut edges.

Weave in all ends on WS.

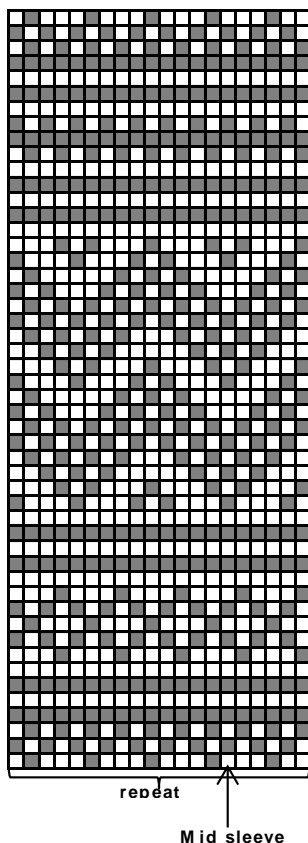
Pattern I



Pattern II



Pattern III



□ = Black
 ■ = Off-White

Viking Superwash Sweater with hood

1206-6

Size:	S	M	L	XL
Bust:	93	104	115	125 cm
	36.6	41	45.3	49.2 in
Length:	67	69	69	69 cm
	26.4	27.2	27.2	27.2 in
Sleeve length:	50	50	52	52 cm
	19.7	19.7	20.5	20.5 in

ALTERNATIVE YARN: Viking Alpaca Sport (40% merino wool, 30% alpaca, 30% nylon), Viking Sportsgarn (100% wool), Viking Superwash (100% wool, superwash), Viking Sportsragg (60% wool, 20% acrylic, 20% nylon), 50 g ball

Grey, 115	13	14	15	16 balls
Off-White, 102	3	3	4	4 balls
Neon Pink, 175	1	1	1	1 ball
Orange, 151	1	1	1	1 ball
Neon Green, 135	1	1	1	1 ball
Red, 150	1	1	1	1 ball

Circular needles and double pointed needles size 3 and 3½ mm – US 2 or 3 and 4 – UK/Canadian 11 and 10 or 9

Gauge: 23 sts = approx. 10 cm/4 in over St st using needles size 3½ mm. **Check your gauge to ensure success.**

TIP! When working a patt with 2 clr, it's important to maintain the order of yarns on your finger. Always hold the darker clr in front throughout the whole project.

SWEATER

Using needles size 3 mm and grey yarn, cast on 216-240-264-288 sts. Work in rnds 3 cm/1.2 in in K2,P2 rib. Place markers each side, 109-121-133-145 sts for front, and 107-119-131-143 sts for back. Change to needles size 3½ mm, and cont working in rnds in patt as charted. Rep patt until end. Bind off.

Sleeves

Using needles size 3 mm and grey yarn, cast on 48-48-52-52 sts. Work in rib, same as for body. Change to needles size 3½ mm. Knit 1 rnd, and inc evenly across number of sts to be 63-65-69-71 sts. Cont working in rnds in patt. Place a marker mid under sleeve. Inc 1 st both sides of the marker approx. every 2½-2-2-2 cm/1-0.8-0.8-0.8 in until you have altog. 101-105-111-115 sts on a rnd. When work measures the given length, or as desired, turn inside out and work 5 rnds in St st with basic clr (= seam allowance). Bind off rather loosely.

Finishing

Measure front neck edge: Measure approx. 10-11-11-12 cm/4-4.3-4.3-4.7 in from mid front towards each side, and approx. 7 cm/2.8 in downwards from upper edge. Thread a yarn to mark front neckline. Sew a dense zigzag seam with sewing machine along the marked neckline. Cut off extras.

Sew dense zigzag seams around armholes (= measure width from sleeve top, approx. 22-23-24-25 cm/8.7-9.1-9.4-9.8 in). Cut open between seams.

Sew shoulder seams.

Neck band: Using needles size 3 mm and grey yarn, pick or knit up approx. 112-116-116-120 sts. Work in rnds 3 cm/1.2 in in K2,P2 rib. Purl 1 rnd (= folding edge) + 3 cm/1.2 in in rib. Bind off rather loosely. Fold neck and in double over cut edge, and sew on WS.

Hood: Using needles size 3½ mm and grey yarn, cast on 158 sts. Work back and forth 3 cm/1.2 in in K2,P2 rib. Knit 1 row (= WS) = folding edge + 3 cm/1.2 in in rib. Cont working back and forth in St st until work measures approx. 5 cm/2 in, measured from folding edge. Bind off 1 st at each edge every 4th row altog. 8 times = 142 sts Cont working back and forth without dec until work measures approx. 28 cm/11 in, measured from folding edge. Bind off 32 mid sts. Finish each side separately. Cont working until each side measures approx. 7 cm/2.8 in. Bind off. Fold front edge in double, and sew on WS. Fold hood in double, and sew top seam. Sew 2 top sides to the bound-off mid sts.

Sew hood to neck edge: Beg mid back, and sew hood along neck edge towards mid front (don't sew the front edge, but leave short edges open for threading in a cord). Sew on sleeves. Sew seam allowances on WS over cut edges. Twist a cord using grey yarn, and thread it to front edge.

TIP! When working a patt with 2 clr, it's important to maintain the order of yarns on your finger. Always hold the darker clr in front throughout the whole project.

Using needles size 3 mm and black yarn, cast on 192–208–220–230–246–260 sts. Work in rnds 6–6–6–7–7–7 cm/2.4–2.4–2.4–2.8–2.8–2.8 in. Change to needles size 3½ mm. Cont working in St st, and inc evenly across 1st rnd number of sts to be 224–240–256–272–288–304 sts. Place markers each side, 113–121–129–137–145–153 sts for front, and 111–119–127–135–143–151 sts for back. When work measures approx. 44–45–46–46–48–50 cm/17.3–17.7–18.1–18.1–18.9–19.7 in, bind off 9 sts mid front for split. Next rnd: Cast on 4 new sts over the bound-off sts, purl each rnd (= will be cut open later on). When work measures approx. 51–52–53–54–56–58 cm/20.1–20.5–20.9–21.3–22–22.8 in, work patt A, after that cont working in St st with black yarn until work measures approx. 65–66–67–68–70–72 cm/25.6–26–26.4–26.8–27.6–28.3 in. Bind off.

Sleeves: Using needles size 3 mm and black yarn, cast on 46–48–48–50–50–52 sts. Work in rnds 5–5–6–6–7–7 cm/2–2–2.4–2.4–2.8–2.8 in in K1,P1 rib. Change to needles size 3½ mm. Cont working in St st, and inc evenly across 1st rnd number of sts to be 65–67–67–69–69–71 sts. Place a marker beg of rnd (= mid under sleeve). Cont working in St st, **inc** 1 st both sides of the marker approx. every 2–1½–1½–1½–1½–1½ cm/0.8–0.6–0.6–0.6–0.6–0.6 in. When work measures approx. 34–35–36–38–40–41 cm/13.4–13.8–14.2–15–15.7–16.1 in, work patt A as charted. Rep until work measures 48–49–50–52–54–55 cm/18.9–19.3–19.7–20.5–21.3–21.7 in, and you have 109–115–121–125–129–133 sts on a rnd. Turn work inside out, and work 6 rnds in St st. Bind off.

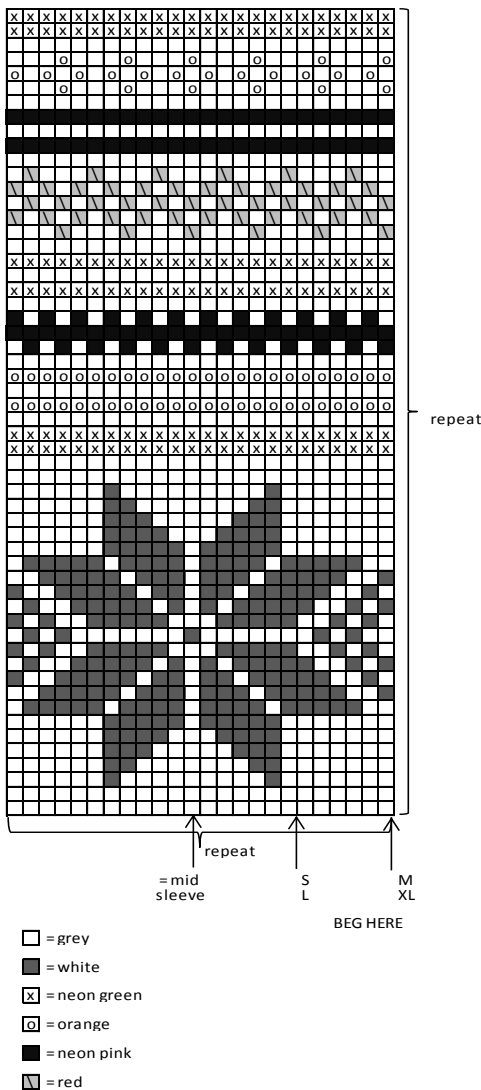
Finishing: Dampen pieces from WS. Sew 2 smallest zigzag around armholes (= measure width from sleeve top) and mid front. Cut open between seams. Sew normal zigzag over cut edges. Join shoulder seams, 35–38–41–45–48–51sts for each shoulder.

Neck band: Thread a yarn to mark front neckline, approx. 7–7–7–8–8–8 in/2.8–2.8–2.8–3.1–3.1–3.1 in below upper edge. Beg from right front. Using needles size 3 mm and black yarn, pick up approx. 25–26–27–28–29–30 sts along both sides of front neck edge (check that patt is the same both sides of the neck edge) + sts from back = altog. 91–95–99–101–105–109 sts. Knit 1 rnd, and cont working in K1,P1 rib until neck band measures 12 cm/4.7 in. Bind off in rib.

Sew 2 smallest zigzag seams along innerside of neck edge. Cut off extras. Fold neck edge in double over cut edge, and sew on WS.

Left front edge: Using needles size 3 mm and black yarn, pick or knit up approx 48 sts along split edge + 6 cm/2.4 from neck edge. Work 4 rows in St st. Bind off. Using needles size 3 mm and black yarn, knit up approx. 48 sts from WS (= seam allowance). Work 4 rows in St st. Bind off. Work same for right front edge.

Sew on sleeves. Sew seam allowances over cut edges. Weave in all ends on WS. Sew zipper between front edges.



VikingSuperwash

Sweater

1206-7

Size	36	38	40/42	48/50	52	54
Bust/Chest	97	104	111	118	125	132
	38.2	41	45.7	46.4	40.5	51.9
Length	65	66	67	68	70	72
	25.6	26	26.4	26.8	27.6	28.3
Sleeve length	48	49	50	52	54	55
	18.9	19.3	19.7	20.5	21.3	21.7

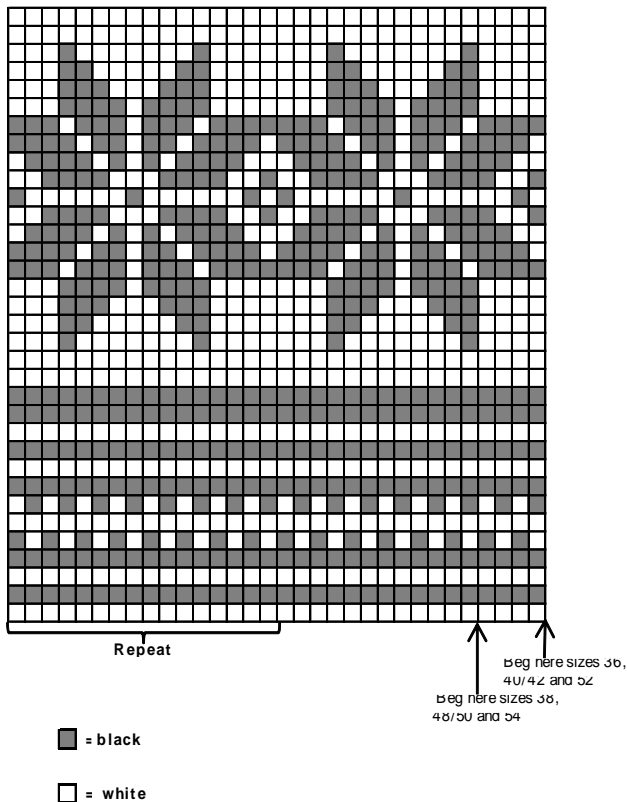
ALTERNATIVE YARN: Viking Superwash (100% wool, superwash), Viking Alpaca Sport (30% alpaca, 40% merino wool, 30% nylon), Viking Sportsragg (60% wool, 20% nylon, 20% acrylic), Viking Sportsgarn (100% wool), 50 g ball

Black, 103 15 16 16 17 18 18 balls
White, 100 2 2 3 3 3 3 balls

Circular needle and double pointed needles size 3 and 3½ mm – US 2 or 3 and 4 – UK/Canadian 11 and 10 or 9 + zipper, 20 cm/7.9 in.

Gauge: 23 sts = approx. 10 cm/4 in over St st using needles size 3½ mm. **Check your gauge to ensure success.**

Pattern A



VikingSuperwash

Sweater

1206-8

Size	36	38	40/42	48/50	52	54
Bust/Chest	97	104	111	118	125	132
	cm					
	38.2	41	43.7	46.4	49.2	51.9
	in					
Length	65	66	67	68	70	72
	cm					
	25.6	26	26.4	26.8	27.6	28.3
	in					
Sleeve length	48	49	50	52	54	55
	cm					
	18.9	19.3	19.7	20.5	21.3	21.7

ALTERNATIVE YARN: Viking Superwash (100% wool, superwash), Viking Alpaca Sport (30% alpaca, 40% merino wool, 30% nylon), Viking Sportsragg (60% wool, 20% nylon, 20% acrylic), Viking Sportsgarn (100% wool), 50 g ball

Pink, 164 14 15 16 16 17 18 balls
White, 100 3 4 4 4 5 5 balls

Circular needle and double pointed needles size 3 and 3½ mm – US 2 or 3 and 4 – UK/Canadian 11 and 10 or 9

Gauge: 23 sts = approx. 10 cm/4 in over St st using needles size 3½ mm. **Check your gauge to ensure success.**

TIP! When working in patt with 2 clrs, it's important to maintain the order of yarns on your finger. Always hold the darker yarn in front throughout the whole project.

Using needles size 3 and pink yarn, cast on 192–208–220–230–

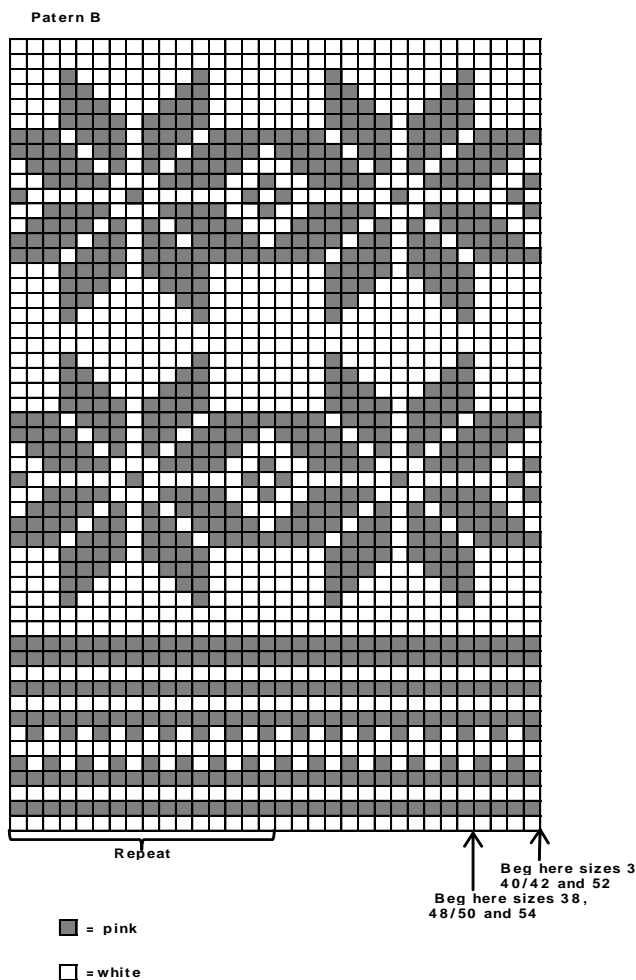
246–260 sts. Work in rnds 6–6–6–7–7–7 cm/2.4–2.4–2.4–2.8–2.8–2.8 in in K1,P1 rib. Change to needles size 3½ mm. Work in St st, and inc evenly across 1st rnd number of sts to be 224–240–256–272–288–304 sts. Place markers both sides, 113–121–129–137–145–153 sts for front, and 111–119–127–135–143–151 sts for back. When work measures approx. 35–36–37–38–40–42 cm/13.8–14.2–14.6–15–15.7–16.5 in, work patt B. When patt B is ready, cont working in St st with pink clr until work measures approx. 58–59–60–60–62–64 cm/ 22.8–23.2–23.6–23.6–24.4–25.2 in, bind off 15–15–17–17–19–19 mid front sts for neck edge. Cont working back and forth. Bind off beg of each row 1x6–7–7–7–7–7, 1x4–4–4–4–4–5, 1x 2 and 2x1 st. When work measure approx. 65–66–67–68–70–72 cm/25.6–26–26.4–26.8–27.6–28.3 in, bind off.

Sleeves: Using needles size 3 mm and pink yarn, cast on 46–48–48–50–50–52 sts. Work in rnds 5–5–6–6–7–7 cm/2–2–2.4–2.4–2.8–2.8 in in K1,P1 rib. Change to needles size 3½ mm. Work in St st, and inc evenly across 1st rnd number of sts to be 65–67–67–69–69–71 sts. Place a marker beg of rnd (= mid under sleeve). Cont working in St st, **and** inc 1 st both sides of the marker approx. every 2–1½–1½–1½–1½–1½ cm/0.8–0.6–0.6–0.6–0.6–0.6 in. When sleeve measures approx. 26–27–28–30–32–33 cm/10.2–10.6–11–11.8–12.6–13 in, work patt A as charted, and after that cont working in St st with pink yarn, until work measures 48–49–50–52–54–55 cm/18.9–19.3–19.7–20.5–21.3–21.7 in, and you have 109–115–121–125–129–133 sts on a rnd. Turn work inside out, and work 6 rnds in St st for seam allowance. Bind off.

Finishing: Dampen pieces slightly from WS. Sew 2 smallest zigzag seams around armholes (= measure width from sleeve top). Cut open between seams. Sew normal zigzag over cut edges. Join shoulder seams, 35–38–41–45–48–51 sts for each shoulder.

Neck band + hood: Using needles size 3 mm and pink yarn, pick or knit up approx. 102–106–110–112–116–120 sts along neck edge. Work in rnds in K1,P1 rib. When neck band measures 2 cm/0.8 in, bind off mid front st. Cont working in back and forth. Inc 2 sts altog 3 times on each shoulder: Work until 1 knit-st approx. 7 sts before shoulder, inc 1 st into this st + 1 st to next purl-st, rep inc with 5 sts between inc altog 3 times. Rep inc over the other shoulder. Cont working in rib, and rep inc after 4 cm/1.6 in. When neck edge measures approx. 6 cm/2.4 in, change to needles size 3½ mm. Cont working in St st inside 8 rib sts at each edge. Place a marker mid back. When hood measures (measured from rib) 2cm/0.8 in, Inc 1 st both sides of the marker. Rep inc approx. every 4 cm/1.6 in altog. 6–6–6–7–7–7 times. When hood measures approx. 28–28–29–29–30–30 cm/11–11–11.4–11.4–11.8–11.8 in, **dec** 1 st both sides of the marker. Rep dec every 4th row 3 times, and then every 2nd row until hood measures approx. 34–35–36–36–37–38 cm/13.4–13.8–14.2–14.2–14.6–15 in. Bind off. Join top seam of the hood.

Finishing: Sew on sleeves. Sew seam allowances over cut edges. Weave in all ends on WS.



VikingSuperwash

Sweater with yoke

1206-9

Size	S	M	L	XL
Bust, approx.	96	104	115	122 cm
	38.8	41	45.3	48 in
Length, approx.	65	66	67	68 cm
	25.6	26	26.4	26.8 in
Sleeve length, approx.	48	49	50	52 cm
	18.9	19.3	19.7	20.5 in

ALTERNATIVE YARN: Viking Superwash (100% wool, superwash), Viking Alpaca Sport (30% alpaca, 40% merino wool, 30% nylon), Viking Sportsragg (60% wool, 20% nylon, 20% acrylic), Viking Sportsgarn (100% wool), 50 g ball

Grey, 115	13	13	14	15 balls
White, 100	2	2	3	3 balls

Circular needle and double pointed needles 3 and 3½ mm – US 2 or 3 and 4 – UK/Canadian 11 and 10 or 9

Gauge: 23 sts = approx. 10cm/4 in over St st using needles size 3½ mm. **Check your gauge to ensure success.**

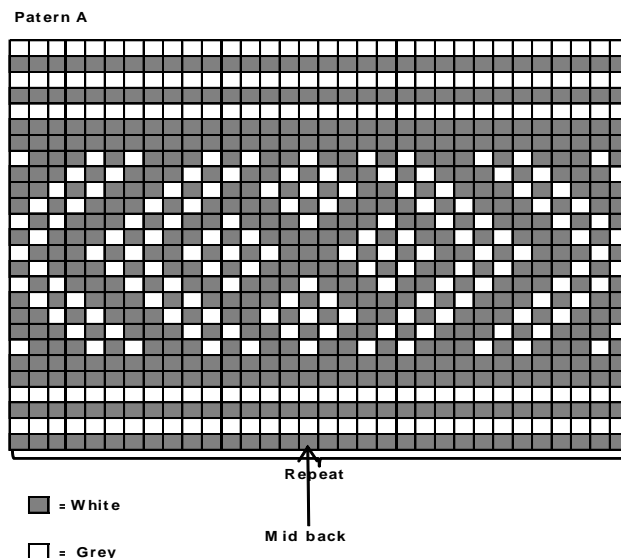
Using needles size 3 mm and grey yarn, cast on 188–208– 224 – 240 sts. Work in rnds 6–6–7–7 cm/2.4-2.4-2.8-2.8 in in K1,P1 rib. Change to needles size 3½ mm. Cont working in St st, and inc evenly across 1st rnd number of sts to be 220–240–264– 280 sts. Place markers each side, 111–121-133–141 sts for front, and

109–119–131–139 sts for back. When work measures approx. 39–40–41–42 cm/15.4-15.7-16.1-16.5 in, bind off each side 12 sts (6 sts both sides of the markers). Leave work aside, and knit sleeves.

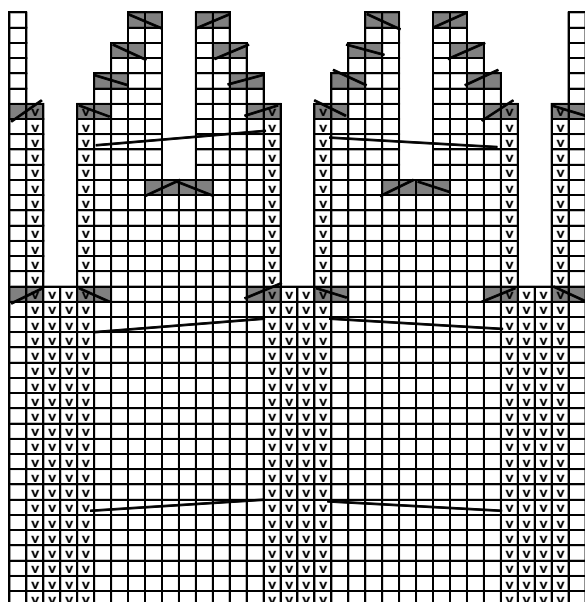
Sleeves: Using needles size 3 mm and grey yarn, cast on 44–48– 50–50 sts. Work 6 cm/2.4 in in K1,P1 rib. Change to needles size 3½ mm. Work in St st, and inc evenly across 1st rnd number of sts to be 52–56–62–68 sts. Place a marker beg of rnd (= mid under sleeve. Inc 1st both sides of the marker approx. every 3½ cm/1.4 in until you have 74–80–84–92 sts on a rnd, and sleeve measures approx. 47–48–49–51 cm/18.5-18.9-19.3-20.1 in. Bind off 12 sts mid under sleeve (6 sts both sides of the marker). Leave work aside, and knit the other sleeve.

Yoke: Beg with patt A, and slip all pieces on same circular needle size 3½ mm. Slip sleeve sts over the bound-off sts for armholes = 320–352–384–416 sts. Beg rnd from back (right shoulder). Check from arrow where to beg patt. Adjust evenly across last rnd number of sts to be 322–350–384–408 sts. When patt A is ready, cont working in patt B. Cable st patt requires more sts than St st, so work as foll: Divide work into 14–14– 16–17 parts, 23–25–24–24 sts for each section. Work 1 rnd, and inc 14 sts evenly across 18 mid sts of each section = 518–546– 608–646 sts on a rnd. Work *patt B over 34 sts, St st over 3–5– 4–4*, rep *-* and end with St st 3–5–4–4 sts. After 1st cable twist, beg dec: K2 last sts of each St st-panel tog. Rep dec every 6th– 4th– 5th– 5th rnd, until 2 sts rem in each panel. Cont dec as charted = 84 – 84 – 96 – 102 sts rem on a rnd. Knit 1 rnd with grey yarn. Size XL: Adjust number of sts to be 104 sts. Using needles size 3½ mm, cont working in patt C. Change to needles size 3mm. Cont working with white yarn. Purl 1 rnd (= folding edge), 4 cm/1.6 in St st. Bind off rather loosely. Fold in double, and sew on WS.

Sew seams under arms. Weave in all ends on WS.



Pattern B



□ = Knit

▣ = Purl

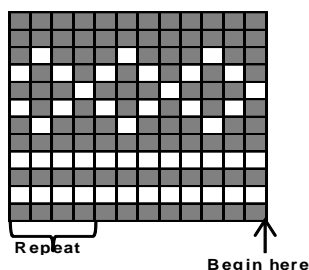
= slip 5 sts on cn and hold to f knit sts from cn

= slip 5 sts on cn and hold to back, K5, knit sts from cn

= SI 1 st, K1, psso

= K2tog

Pattern C



Repeat

Begin here

Red, 160: 6 6 6 7 7 8 balls
 White, 100: 3 3 3 4 4 4 balls
 Blue, 126: 7 7 7 8 9 9 balls

Circular needle and double pointed needles size 3 and 3½ mm – US 2 or 3 and 4 – UK/Canadian 11 and 10 or 9

Gauge: 23 sts = approx. 10 cm/4 in over St st using needles size 3½ mm. **Check your gauge to ensure success.**

TIP! When working a patt with 2 clrs, it's important to maintain the order of yarns on your finger. Always hold the darker clr in front throughout the whole project.

Using needles size 3mm and blue yarn, 182-198-214-230-246-278 sts. Work in rnds 4 cm/1.6 in in K1,P1 rib. Change to needles size 3½ mm. Knit 1 rnd, and inc evenly across 10 sts = 192-208-224-240-256-288 sts. Place markers each side, 97-105-113-121-129-145 sts, and 95-103-111-119-127-143 sts for back. Work patt I, and after that patt II. **Note! Sizes S and L:** Work first and last st all the time with basic clr = side sts. Patt II is multiple with 32 sts. Sts for sizes S and L are not multiple with 32 sts, beg and end according to the arrows, both front and back. **Note! Sizes XS, M, XL and XXL:** Beg from arrow for patt II, and rep across the rnd.

Both: When patt II is ready, work patt III. When patt is ready, cont working in St st with red yarn until work measures 34-34-35-35-36-36 cm/13.4-13.4-13.8-13.8-14.2-14.2 in. Work patt I, and after that patt II as charted, and end where the arrow points for sleeves. Work next rnd with blue yarn, and bind off 10 sts each side for armholes = 5 sts both sides of the markers. Leave work aside, and knit the sleeves.

Sleeves

Using needles size 3mm and blue yarn, cast on 46-48-48-50-52-52 sts. Work in rnds 4 cm/1.6 in in K1,P1 rib. Change to needles size 3½ mm. Knit 1 rnd, and inc evenly across number of sts to be 51-57-61-65-67-73 sts. Place a marker beg of rnd = mid under sleeve. Work I, II and III as charted, check from mid where to beg patt. **Same time, inc** 1 st both sides of the marker approx. every 2½ cm/1 in. When patterns are ready, change to red yarn. Cont working in St st, and keep on inc until you have 87-93-97-101-105-111 sts on a rnd. **But** when work measures approx. 35-35-36-37-38-38 cm/13.8-13.8-14.2-14.6-15-15 in, or approx. 14 cm/5.5 in less than the desired length, work patt I, and after that patt II as charted. End with same patt rnd as for body. Bind off on last rnd 5 sts both sides of the marker = 10 sts mid under sleeve.

Leave work aside, and knit same for the other sleeve.

Yoke: Slip all pieces on same circular needle size 3½ mm. Place sleeve sts over the sts bound-off for armholes = 326-354-378-402-426-470 sts. Place markers at each 4 seamlines. Cont working in patt, **but** beg raglan-dec: work until 3 sts rem before a marker, K2togtbl, K2, K2tog, rep dec at each seamline = 8 sts are dec every 2nd rnd. When patt III is ready, cont working in St st with red yarn. Rep raglan-dec altog. 26-28-30-32-34-36 times, until 118-130-138-146-154-182 sts rem. Armhole measures now approx. 20-21-22-23-25-27 cm/7.9-8.3-8.7-9.1-9.8-10.6 in. Change to white yarn, and work 4 rnds in St st. Dec evenly across last rnd number off sts to be 118-122-126-130-134-138 sts. Change to red yarn, knit 1 rnd. Work 7 cm/2.8 in in K1,P1 rib. Bind off rather loosely in rib.

Finishing

Sew under arm seams.

Weave in all ends on WS.

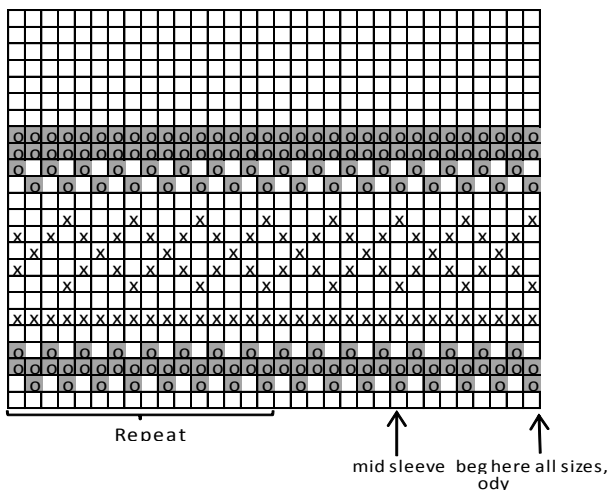
Viking Superwash Sweater

1206-10

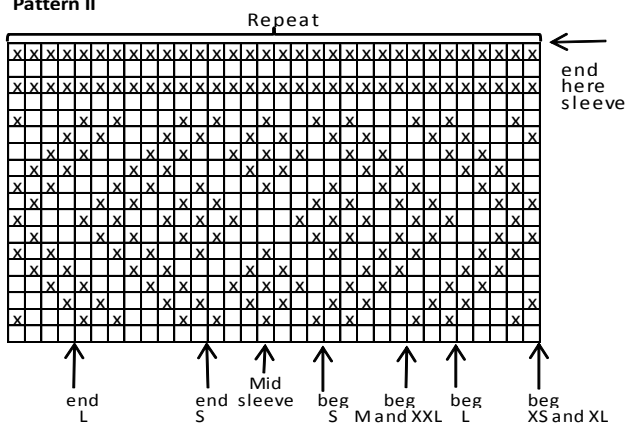
Size	XS	S	M	L	XL	XXL
Bust, approx.	83	90	97	104	111	125 cm
	32.7	35.4	38.2	41	43.7	49.2 in
Length, approx.	68	69	71	72	75	77 cm
	26.8	27.2	28	28.3	29.5	30.3 in
Sleeve length	49	49	50	51	52	52 cm
	19.3	19.3	19.7	20.1	20.5	20.5

ALTERNATIVE YARN: Viking Superwash (100% wool, superwash), Viking Alpaca Sport (30% alpaca, 40% merino wool, 30% nylon), Viking Sportsragg (60% wool, 20% nylon, 20% acrylic), Viking Sportsgarn (100% wool), 50 g ball

Pattern III

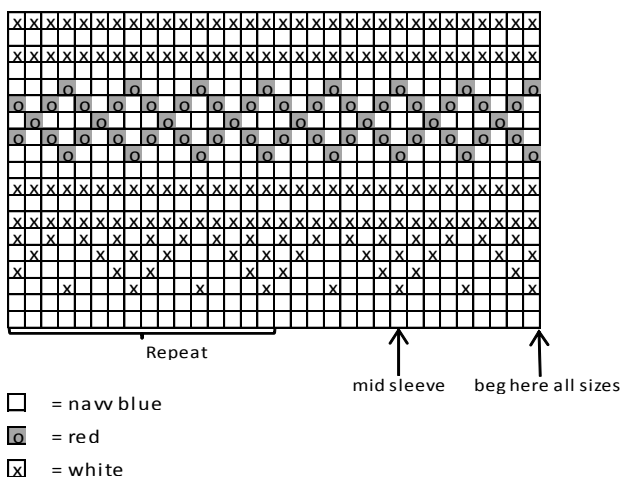


Pattern II



Beg and end according to arrows. front and back

Pattern I



Viking Superwash

Sweater

1206-11

Size	36	38	40/42	48/50	52	54
Bust/Chest	97	104	111	118	125	132cm
	38.2	41	43.7	46.4	49.2	51.9 in
Length	65	66	67	68	70	72 cm
	25.6	26	26.4	26.8	27.6	28.3 in
Sleeve length	48	49	50	52	54	55 cm
	18.9	19.3	19.7	20.5	21.3	21.7 in

ALTERNATIVE YARN: Viking Superwash (100% wool, superwash), Viking Alpaca Sport (30% alpaca, 40% merino wool, 30% nylon), Viking Sportsragg (60% wool, 20% nylon, 20% acrylic), Viking Sportsgarn (100% wool), 50 g ball

Off-White, 102 17 18 19 20 20 21 balls

Circular needle and double pointed needles size 3 and 3½ mm – US 2 or 3 and 4 – UK/Canadian 11 and 10 or 9

Gauge: 23 sts = approx. 10cm/4 in over St st using needles size 3½ mm. **Check your gauge to ensure success.**

Using needles size 3 mm, cast on 192–208–220–230–246–260 sts. Work in rnds 6–6–6–7–7–7 cm/2.4-2.4-2.4-2.8-2.8-2.8 in in K1,P1 rib. Change to needles size 3½ mm. Work patt I, and inc evenly across 1st rnd number of sts to be 224–240–256–272–288–304 sts. Place markers each side, 113–121–129–137–145–153 sts for front, and 111–119–127–135–143–151 sts for back. Note! Adjust the length while working in dotted patt. When work measures approx. 41-41- 41-41-42-43 cm/16.1-16.1-16.1-16.1-16.5-16.9 in, bind off first and last st of front piece for armholes. Finish back first.

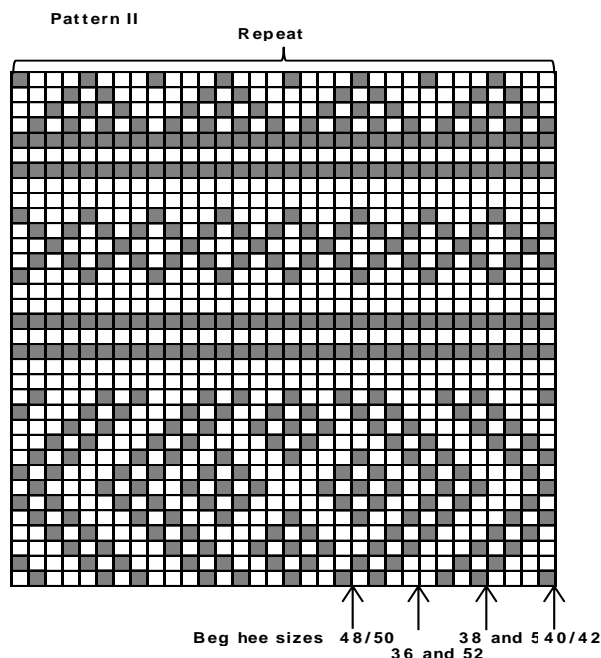
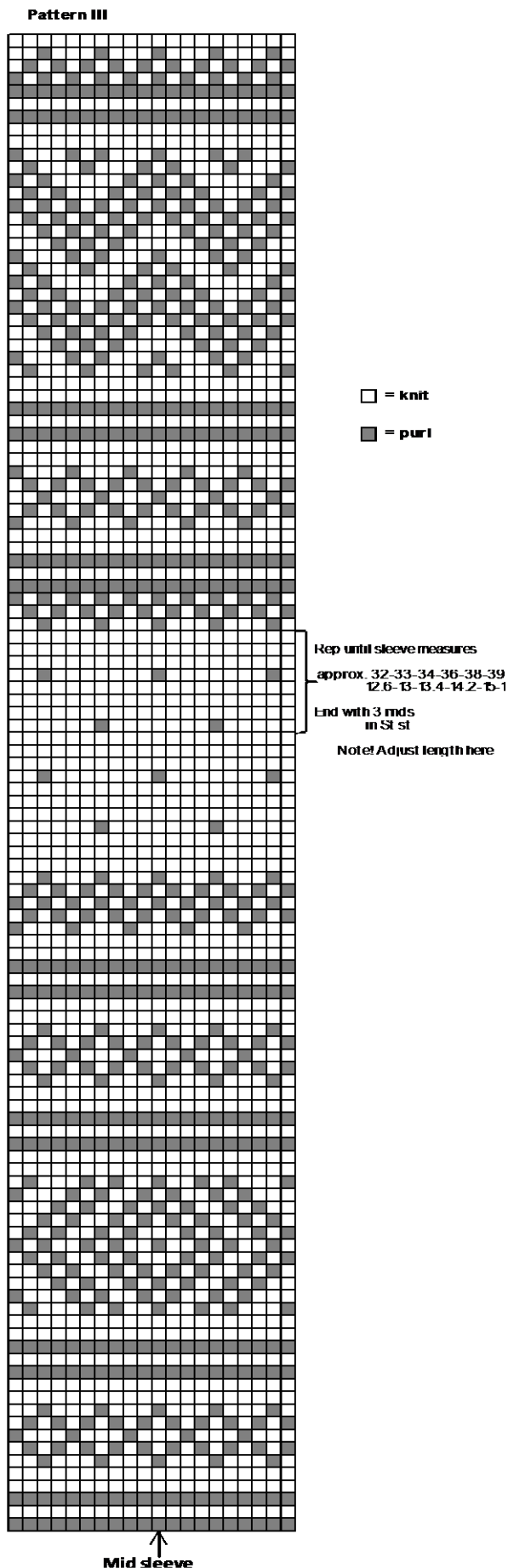
Back: Cont working back and forth. When patt I is ready, work patt II, and after that cont working in St st until work measures 65–66–67–68–70– 72 cm/25.6-26-26.4-26.8-27.6-28.3 in. Bind off.

Front: Work same as for back, but when work measures approx. 58–59–60–60–62–64 cm/22.8-23.3-23.6-23.6-24.4-25.2 in, bind off 15–15–17–17–19–19 mid front sts. Work each side separately. Bind off at neck edge every 2nd row 1x6–7–7–7–7–7, 1x4–4–4–4–5, 1x2, and 2x1 st. When front measures same as back, bind off. Work same for the other side, rev all shaping.

Sleeves: Using needles size 3mm, cast on 46–48–48–50–50–52 sts. Work in rnds 5–5–6–6–7–7 cm/2-2-2.4-2.4-2.8-2.8 in in K1,P1 rib. Change to needles size 3½ mm. Knit 1 rnd, and inc evenly across rnd number of sts to be 65–67–67–69–69–71 sts. Place a marker beg of rnd (= mid under sleeve). Work patt III as charted, **and** inc 1 st both sides of the marker approx. every 2–1½–1½-1½-1½-1½ cm/0.8-0.6-0.6-0.6-0.6-0.6 in. When patt III is ready, cont working in St st until work measures 48–49–50–52–54–55 cm/18.9-19.3-19.7-20.5-21.3-21.7 in (patt should be ready by now), and you have 109–115–121–125–129–133 sts on a rnd. Bind off.

Finishing: Join shoulder seam, 34–37–40–44–47–50 sts for each shoulder.

Neck band: Pick or knit up approx. 102–106–110–112–116–120 sts. Knit 1 rnd, and after that 7–7–7–8–8–8 cm/2.8-2.8-2.8-3.1-3.1-3.1 in in K1,P1 rib. Bind off rather loosely in rib. Fold neck band in double, and sew on WS. Sew on sleeves. Weave in all ends on WS.



Viking Superwash Sweater

1206-12

Size	36	38	40/42	48/50	52	54
Bust/Chest	96	104	113	117	126	134 cm
	38.8	41	44.5	46	49.6	53.7 in
Length	65	66	67	68	70	72 cm
	25.6	26	26.4	26.8	27.6	28.3 in
Sleeve length	48	49	50	52	54	55 cm
	18.9	19.3	19.7	20.5	21.3	21.7 in

ALTERNATIVE YARN: Viking Superwash (100% wool, superwash), Viking Alpaca Sport (30% alpaca, 40% wool, 30% nylon), Viking Sportsragg (60% wool, 20% nylon, 20% acrylic), Viking Sportsgarn (100% wool), 50 g ball

Navy Blue, 126 12 13 14 14 15 15 balls
Beige, 107 3 3 4 4 4 5 balls

Circular needle and double pointed needles size 3 and 3½ mm – US 2 or 3 and 4 – UK/Canadian 11 and 10 or 9

Gauge: 23 sts = approx. 10cm/4 in over St st using needles size 3½ mm. **Check your gauge to ensure success.**

TIP! When working a patt with 2 clr, it's important to maintain the order of yarns on your finger. Always hold the darker yarn in front throughout the whole project.

Using needles size 3 mm and navy blue yarn, cast on 188 – 208 – 224 – 234 – 248 – 266 sts. Work in rnds 6–6–6–7–7 cm/2.4–2.4–2.4–2.8–2.8–2.8 in in K1,P1 rib. Change to needles size 3½ mm. Work in patt I, and inc evenly across 1st rnd number of sts to be 220–240–260–270 – 290–310 sts. Place markers each side, 111–121–131–135–145–155 sts for front, and 109–119–129–135–145–155 sts for back. When patt I is ready, cont working in St st with navy blue yarn until work measures 45–45–45–45–46–47 cm/17.7–17.7–17.7–17.7–18.1–18.5 in. Bind off 18–18–18–20–

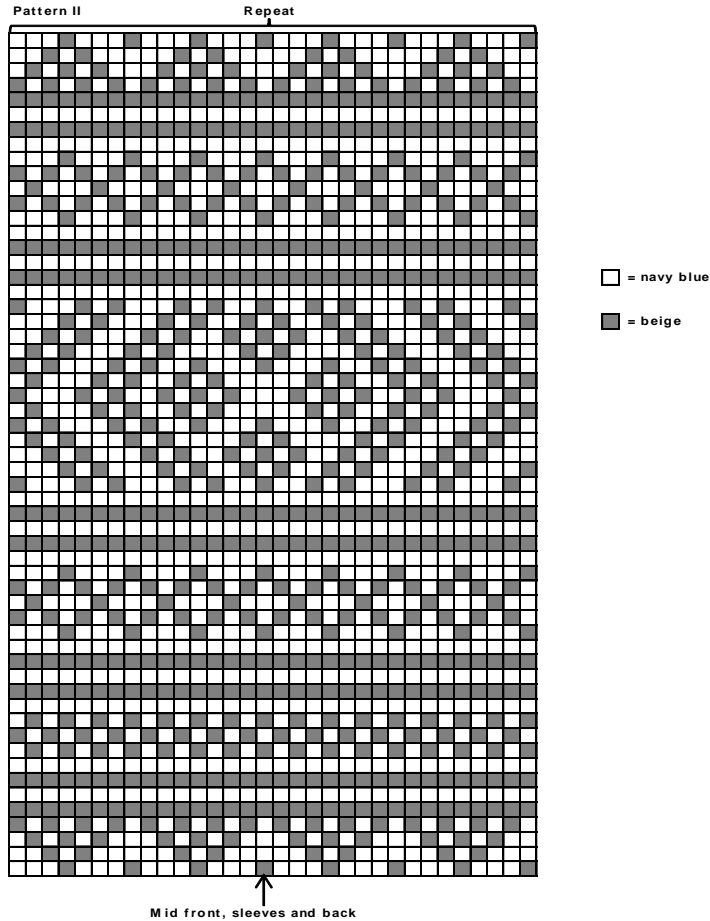
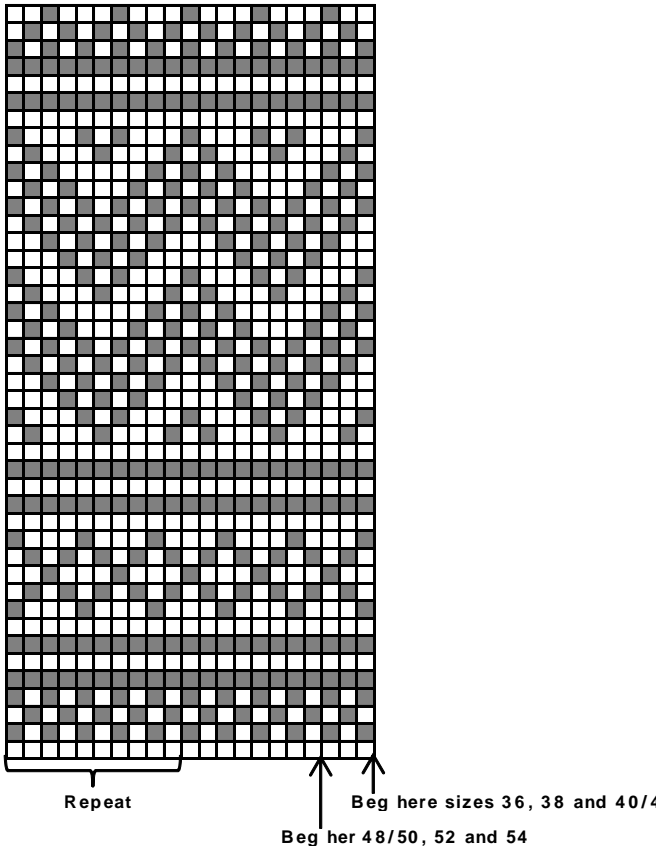
20–20 sts each side (9–9–9–10 –10–10 sts both sides of the markers). Leave work aside, and knit sleeves.

Sleeves: Using needles size 3 mm and navy blue yarn, cast on 46–48–48–50–50–52 sts. Work 6 cm/2.4 in in K1,P1 rib. Change to needles size 3½ mm. Work patt I, and inc evenly across 1st rnd number of sts to be 65–67–67–69–69–71 sts. Place a marker beg of rnd (= mid under sleeve). Inc 1 st both sides of the marker approx. every 2½–2½–2½–2½–2–2 cm/1-1-1-1-0.8-0.8 in. After patt I is ready, work in St st with navy blue yarn until work measures 48–49–50–52–54–55 cm/18.9-19.3-19.7-20.5-21.3-21.7 in, and you have 97–99–101–105–111–115 sts on a rnd. Bind off 18–18–18–20–20–20 sts mid under sleeve (9–9–9–10–10–10 sts both sides of the markers). Leave work aside, and knit the other sleeve.

Yoke: Using navy blue yarn, knit all pieces on same circular needle size 3½ mm. Slip sleeves over the sts bound off for armholes = 342–366–390–400–432–460 sts on a rnd. Place markers at each 4 seamlines. Beg raglan-dec: Work until 2 sts rem before a marker, K2tog, sl 1 st, K1, pssso. Rep dec at each 4 seamlines every 2nd rnd, **but** after 1-1–2–2–4–6 dec (in height), work patt II (check from mid where to beg patt for each piece). Work dec sts all the time with basic clr. When 94- 102–110–120–120–124 sts rem on a rnd, and patt II is ready, cont working with navy blue yarn. Knit 1 rnd, and after that 7–7–7–8–8–8 cm/2.8-2.8-2.8-3.1-3.1-3.1 in in K1,P1 rib. Bind off rather loosely in rib.

Sew under arm seams. Weave in all ends on WS.

Pattern I



Viking Superwash

Cardigan with hood

1206-13

Size	36	38	40/42	48/50	52	54
Bust/Chest	101	108	115	122	129	136 cm
	39.4	42.5	45.3	48	50.5	53.5 in
Length, approx.	65	66	67	68	70	72 cm
	25.6	26	26.4	26.8	27.6	28.3 in
Sleeve length, approx.	48	49	50	52	54	55 cm
	18.9	19.3	19.7	20.5	21.3	21.7 in

ALTERNATIVE YARN: Viking Superwash (100% wool, superwash), Viking Alpaca Sport (30% alpaca, 40% wool, 30% nylon), Viking Sportsragg (60% wool, 20% nylon, 20% acrylic), Viking Sportsgarn (100% wool), 50 g ball

Navy Blue, 126	10	10	11	12	13	13 balls
Red, 160	4	5	5	6	6	7 balls
White, 100	2	2	2	2	2	2 balls

Circular needle and double pointed needles size 3 and 3½ mm – US 2 or 3 and 4 – UK/Canadian 11 and 10 or 9 + zipper

Gauge: 23 sts = approx. 10 cm/4 in over St st using needles size 3½ mm. **Check your gauge to ensure success.**

TIP! When working a patt with 2 clrs, it's important to maintain the order of yarns on your finger. Always hold the darker clr in front throughout the whole project.

Using needles size 3mm and navy blue yarn, cast on 210–226–242–254–270–286 sts. Work back and forth 6–6–6–7–7–7 cm/2.4-2.4-2.4-2.8-2.8-2.8 in in K2,P2 rib. Change to needles size 3½ mm. Work in St st, and inc evenly across 1st row number of sts to be 225–241–257–273–289–305 sts. Cast on 4 new sts to the end of the row (purl these sts each rnd = to be cut open later on). These 4 sts are not included in the number of sts. Place markers each side, 54–58–62–66–70–74 sts for both fronts, and 117–125–133–141–149–157 sts for back. When work measures 30–31- 32–33–35–37 cm/11.8-12.2-12.6-13-13.8-14.6 in, work patt I as charted (purl extra 4 mid front sts each rnd). When patt I is ready, cont working in St st with red yarn. When work measures approx. 58–59–60–60–62–64 cm/22.8-23.2-23.6-23.6-24.4-25.2 in, bind off 20–22–22–22–22–24 mid front sts (incl. 4 purl-sts) for neck edge. Cont working back and forth. Bind off beg of each row 1x5–5–6–5–6–6, 1x3, 1x2, and 1–1–1–2–2–2x1 st ganger. When work measures 65–66–67–68–70–72 cm/25.6-26-26.4-26.8-27.6-28.3 in, bind off.

Sleeves

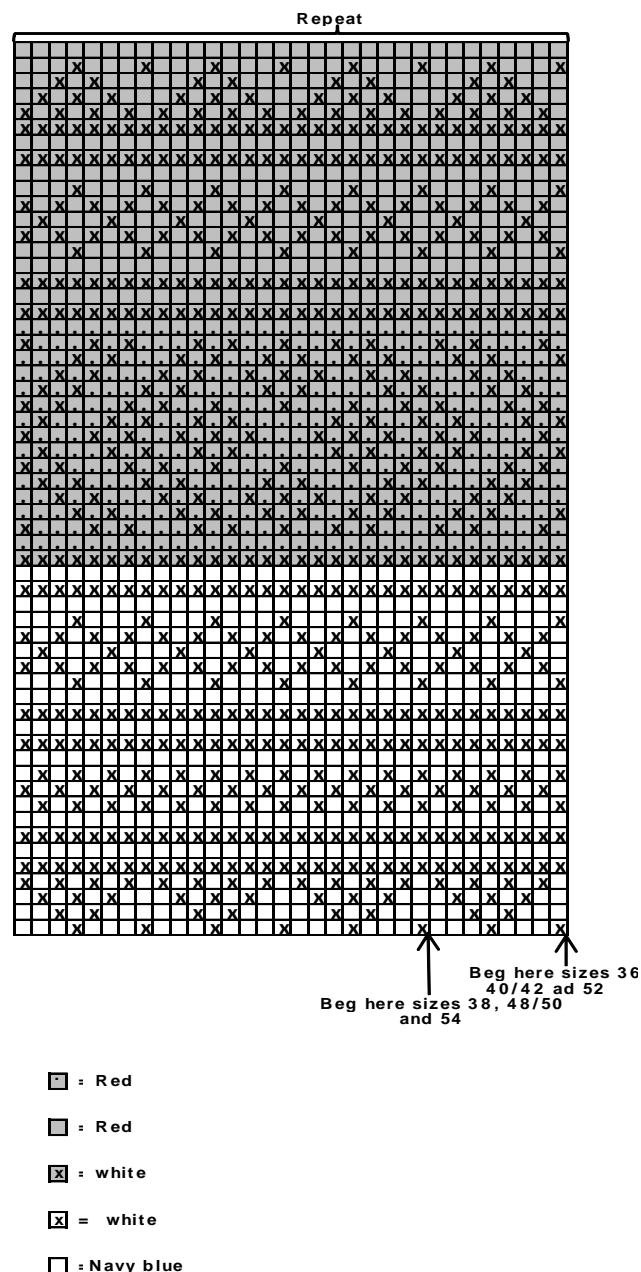
Using needles size 3mm and navy blue yarn, cast on 44–48–48–52–52–56 sts. Work 6–6–6–7–7–7 cm/2.4-2.4-2.4-2.8-2.8-2.8 in in K2,P2. Change to needles size 3½ mm. Work in St st, and inc evenly across 1st rnd number of sts to be 65–67–67–69–69–71 sts. Place a marker beg of rnd (= mid under sleeve). Inc 1 st both sides of the marker approx. every 2–1½–1½-1½-1½- 1½ cm/0.8-0.6-0.6-0.6-0.6-0.6 in, until you have 109–115–121–125–129–133 sts on a rnd, and sleeve measures approx. 48–49–50–52–54–55 cm/18.9-19.3-19.7-20.5-21.3-21.7 in. Turn work inside out, and work 6 rnds in St st. Bind off.

Finishing: Dampen pieces slightly from WS. Sew 2 smallest zigzag seams around armholes (= measure width from sleeve top), and mid front. Cut open between seams. Sew normal zigzag over cut edges. Join shoulder seams, 35–38–41–45–48–51 sts for each shoulder.

Left front band: Using needles size 3 mm and navy blue yarn, pick or knit up approx. 137–139–141–141–145–151 sts along front edge. Work back and forth 4 rows in St st. Bind off rather loosely. Using needles size 3 mm and marine blue yarn, pick or knit up from WS approx. 137–139–141–141–145–151 sts (= seam allowance). Work 4 rows in St st. Bind off. Work same for right front band.

Hood: Beg from right front band, using needles size 3 mm and red yarn, pick or knit up along neck edge approx. 98–102–106–110–110–114 sts. Beg from RS, and work back and forth 3 cm/1.2 in in K2,P2 rib. Change to needles size 3½ mm. Cont working in St st inside 8 rib sts at each edge. Inc 4 sts evenly over each shoulder on first row, 2 sts each side of the shoulder seams (= 8 sts). Place a marker mid back. When hood measures 5 cm/2 in, inc 1 st both sides of the marker. Rep inc. approx. every 4 cm/1.6 in 6–6–6–7–7–7 times. When hood measures approx. 28–28–29–29–30–30 cm/11-11-11.4-11.4-11.8-11.8 in, dec 1 st both sides of the marker. Rep dec every 4th row 3 times, and after that every 2nd row until work measures approx. 34–35–36–36–37–38 cm/13.4-13.8-13.8-14.6-15 in. Bind off. Join top seam.

Finishing: Sew on sleeves. Sew zipper between front bands.



Viking Superwash Sweater

1206-14

Size	36	38	40/42	48/50	52	54
Bust/Chest	97	104	111	118	125	132 cm
	38.2	41	43.7	46.4	49.2	51.9 in
Length	65	66	67	68	70	73 cm
	25.6	26	26.4	26.8	27.6	28.7 in
Sleeve length, approx.	48	49	50	52	54	55 cm
	18.9	19.3	19.7	20.5	21.3	21.7 in

ALTERNATIVE YARN: Viking Superwash (100% wool, superwash), Viking Alpaca Sport (30% alpaca, 40% merino wool, 30% nylon), Viking Sportsragg (60% wool, 20% nylon, 20% acrylic), Viking Sportsgarn (100% wool), 50 g ball

Woman

White, 100 13 13 14 15 16 17 balls

Black, 103 3 3 3 3 3 3 balls

Man

Black, 103 13 13 14 15 16 17 balls

White, 100 3 3 3 3 3 3 balls

Circular needle and double pointed needles size 3 and 3½ mm –
US 2 or 3 and 4 – UK/Canadian 11 and 10 or 9

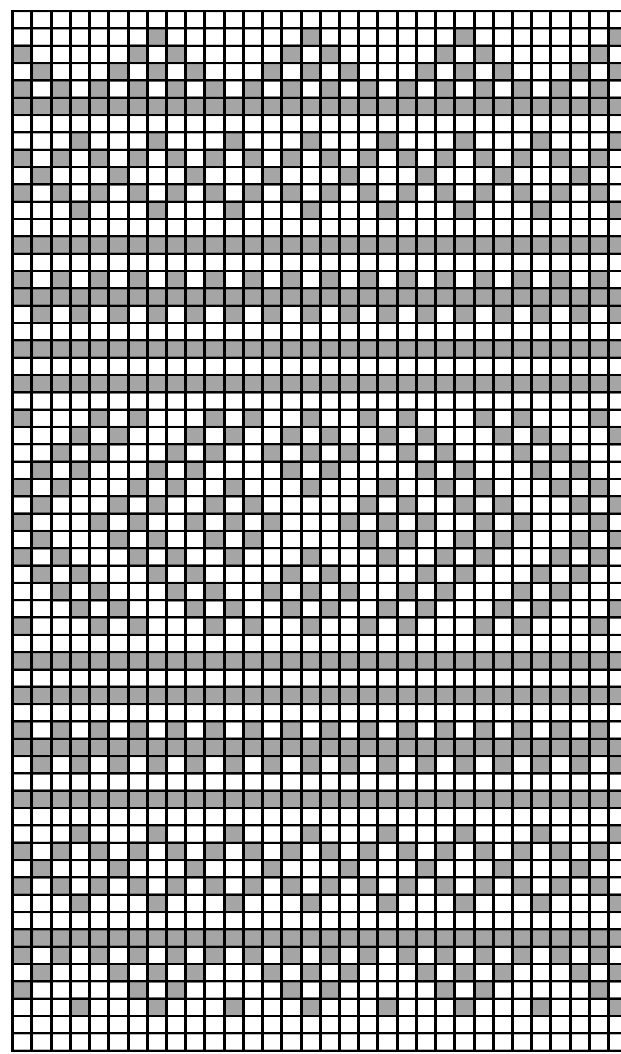
Gauge: 23 sts = approx. 10 cm/4 in over St st using needles size
3½ mm. **Check your gauge to ensure success.**

TIP! When working in a patt with 2 clr, it's important to
maintain the order of yarns on your finger. Always hold the
darker clr in front throughout the whole project.

Using needles size 3 mm and white (black) yarn, cast on 192–
208–220–230–246–260 sts. Work in rnds 6–6–6–7–7 cm/2.4–
2.4–2.4–2.8–2.8–2.8 in in K1,P1 rib. Change to needles size 3½
mm. Work in St st, and inc evenly across 1st rnd number of sts to
be 224–240–256–272–288–304 sts. Place markers each side,
113–121–129–137–145–153 sts for front, and 111–119–127–
135–143–151 sts for back. Cont working in St st until work
measures 42–43–44–45–47–49 cm/16.5–16.9–17.3–17.7–18.5–19.3
in, work in patt as charted. Note! Beg patt according to the arrow
pointing out the size, **but** work first and last st on front in basic
clr (= to be cut open later on). After working 3 cm/1.2 in in patt,
bind off 7 mid front sts. Next rnd: Cast on 3 new sts over the
bound-off sts (= to be cut open later on), purl these sts every rnd.
Cont working in rnds in patt until work measures 65–66–67–68–
70–73 cm/25.6–26–26.4–26.8–27.6–28.7 in. Bind off.

Sleeves: Using needles size 3 mm and white (black) yarn, cast on
39–41–41–43–43–45 sts. Work back and forth 5–5–6–6–7–7
cm/2–2–2.4–2.4–2.8–2.8 in in K1,P1 rib. Change to needles size
3½ mm. Knit 1 rnd, and inc evenly across number of sts to be
58–60–60–62–62–64 sts. Place a marker beg of rnd (= mid under
sleeve). Cont working back and forth in St st, **and** inc 1 st both
sides of the marker approx. every 2–1½–1½–1½–1½ cm/0.8–
0.6–0.6–0.6–0.6–0.6 in. When work measures 10–10–11–11–12–12
cm/4–4–4.3–4.3–4.7–4.7 in, cast on 7 sts to the end of the row (=
mid sleeve). Cont working in rnds in St st (and keep on inc mid
under sleeve). When sleeve measures approx. 14 (8) cm/5.5 (3.1)
in less than the given length, work **patt A+B for woman, and
patt B for man**, and after that cont working in St st with white
(black) yarn until you have 109–115–121–125–129–133 sts on a
rnd, and work measures 48–49–50–52–54–55 cm/18.9–19.3–19.7–
20.5–21.3–21.7 in. Turn work inside out, and work 6 rnds in St st
for seam allowance. Bind off.

Pattern over 32 sts



↑ ↑ ↑ ↑ Repeat ↑ ↑ ↑ ↑
40/42 38/54 36/52 48/50 48/50 36/52 38/54 40/42

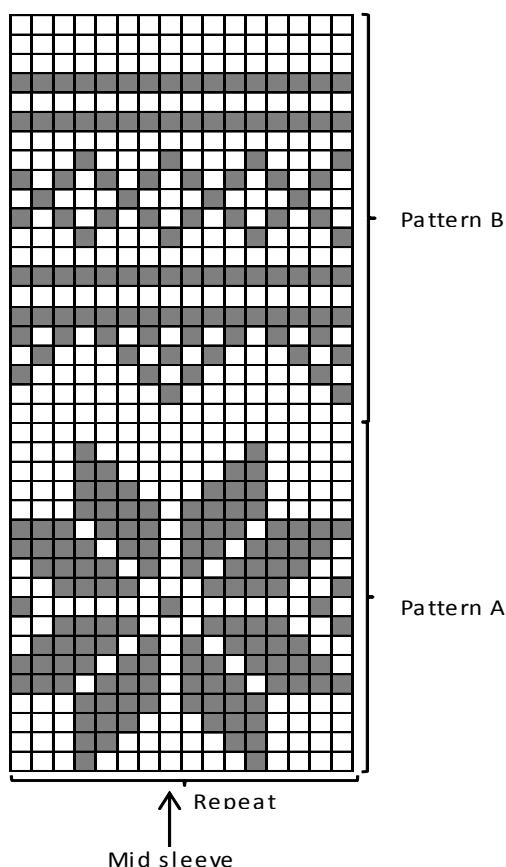
End here sizes:

Beg here sizes:

Note: Beg and according to the arrows, front and back

- = white for woman (black for man)
■ = black for woman (white for man)

Pattern for sleeve



Finishing: Dampen work slightly from WS. Sew 2 smallest zigzag seams around armholes (= measure width from sleeve top) and sleeve splits. Cut open between seams. Join shoulder seams, 35-38-41-45-48-51 sts for each shoulder. Thread a yarn to mark front neckline, approx. 7 cm/2.4 in below upper edge. Sew a smallest zigzag seam around the neck edge, and 2 seams mid front over the purl-sts. Cut open between front seams, and cut extras from neck edge.

Front bands: Using needles size 3 mm and white (black) yarn, pick or knit up from left front edge for woman (right edge for man), approx. 30 sts (same for all sizes). Work back and forth in St st. When work measures 3 cm/1.2 in, knit 1 row from WS (= folding edge) + 3 cm/1.2 in in St st. Bind off.

Place markers for 2 buttons, one approx. 2 cm/0.8 in from lower edge, and the other one between the first and last one (= on neck band)

Right front band for woman (left front band for man) is worked same as the other front band, but with buttonholes. Buttonhole: Bind off 2 sts. Next row: Cast on 2 sts over the bound-off sts. Since front bands are folded in double, make first set off buttonholes when work measures 1½ cm/0.6 in, and another when work measures 4½ mm/1.8 in.

Fold front bands in double, and sew on WS. Place front band with buttonholes over the other one, and sew lower edge to the body.

Neck band: Using needles size 3 mm and white (black) yarn, pick or knit up nit up approx. 113-117-121-121-125-127 sts along neck edge. Work back and forth in K1,P1 rib. When work measures approx. 14 cm/5.5 in, make a buttonhole: Work 4 sts, bind off 2 sts (cast on 2 sts over the bound-off sts on next row), cont working in rib until 6 sts rem, make a buttonhole, and finish the row. When neck band measures 16 cm/6.3 in, bind off rather loosely in rib.

Seam allowance: Using needles size 3 mm and white (black) yarn, pick or knit sts from WS along neck edge. Work 4 rows in St st. Bind off. Sew seam allowance over cut edge. Fold neck band in double over cut edge, and sew on WS.

Sleeve split bands: Using needles size 3 mm and white (black) yarn, pick or knit from RS along right edge approx. 23-23-25-25-27-27 sts. Work back and forth 3 cm/1.2 in in St st, purl 1 row from WS + 3 cm/1.2 in in St st. Bind off. Place markers for 2 buttonholes, first 1½ cm/0.6 from lower edge, and another mid between first one and upper edge.

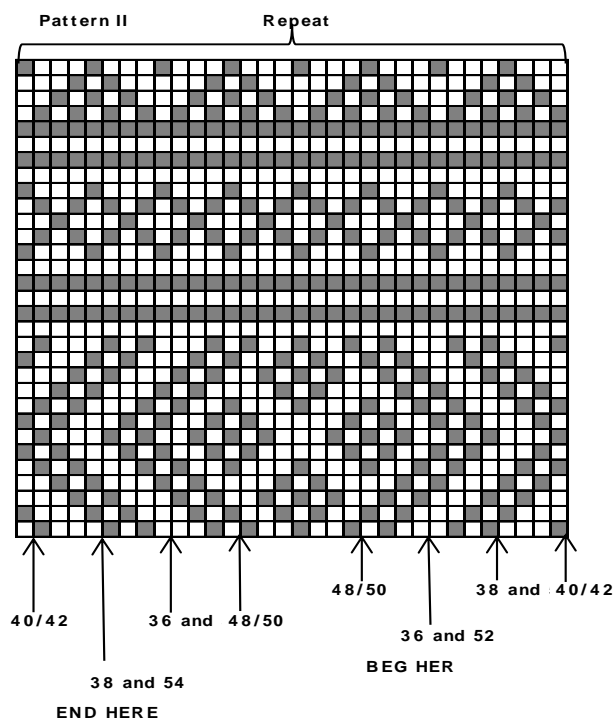
Work same for left edge, but make buttonholes when work measures 1½ cm/0.6 in and 4½ cm/1.8 in.

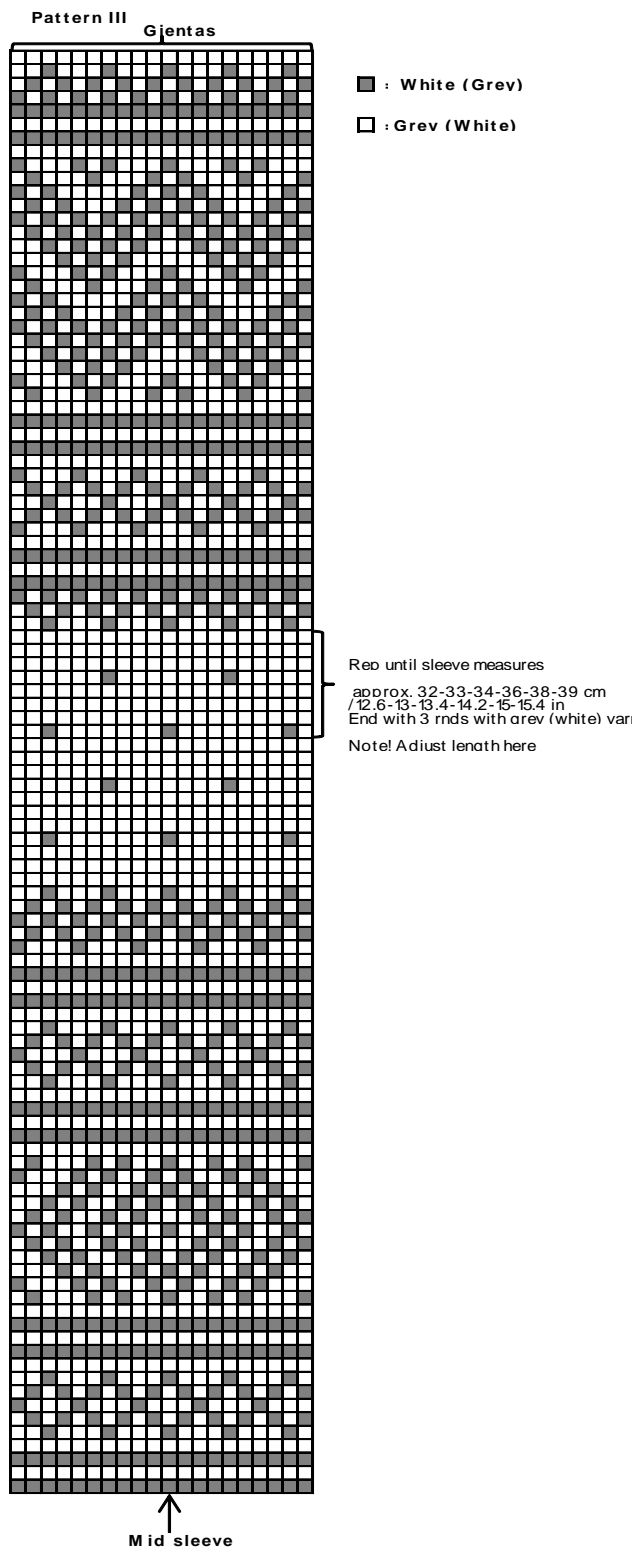
Fold bands in double, and sew on WS. Place band with buttonholes over the other one, and sew upper edge to the sleeve.

Work same for the other sleeve split, but in reverse.

Sew on sleeves. Sew seam allowances over cut edges. Weave in all ends on WS.

Sew on buttons, 2 buttons to front bands + 1 button both sides of the front bands (on neck band). Fold neck band in double on RS. Sew 2 buttons to each sleeve band.





Black, 103 14 15 16 balls
White, 100 2 2 2 balls

Circular needle and double pointed needles size 3 and 3½ mm – US 2 or 3 and 4 – UK/Canadian 11 and 10 or 9 + zipper

Gauge: 23 sts = approx. 10 cm/4 in over St st using needles size 3½ mm. **Check your gauge to ensure success.**

TIP! When working a patt with 2 clrs, it's important to maintain the order of yarns on your finger. Always keep the darker clr in front throughout the whole project.

Using needles size 3mm and black yarn, cast on 265 – 276 – 294 sts. Work back and forth 4 cm/1.6 in in St st. Change to needles size 3½ mm, and purl 1 row = folding edge. Cast on 4 new sts to end of the row (= purl each rnd, to be cut later on, not incl in the number of sts) mid front, and cont working in rnds in St st. Place markers each side, 65-68-72 sts for both fronts, and 135-140-150 sts for back. When work measures approx. 4 cm/1.6 in (measured from folding edge), dec as foll: Beg from right, K9-10-10, K2tog, *K25-26-28, K2tog*, rep *-* 9 times, and end with K11-12-12. Rep dec every 4 cm/1.6 in 6 times with 1 st less between each dec, but mid front beg with 1 st less **every 2nd time**: **Size S:** Beg with 9-9-8-8-7-7 sts. **Size M:** Beg with 10-10-9-9-8-8 sts. **Size L:** Beg with 10-10-9-9-8-8 sts. There is now 205-216-234 sts on a rnd. When work measures approx. 25 cm/9.8 in (measured from folding edge), adjust across last rnd number of sts to be 204-216-234 sts. Change to needles size 3 mm. Work in patt I for approx. 8 cm/3.1 in (3 cables, end as charted). Change to needles size 3½ mm, and work in St st approx. 10-11-12 cm/4-4.3-4.7 in, and work measures approx. 43-44-45 cm/16.9-17.3-17.7 in. Dec 1 back st to have odd number of sts for patt II, and off 10-10-12 sts at each side (5-5-6 sts both sides of the markers).

Sleeves: Using needles size 3mm and black yarn, cast on 54–60–60 sts. Work and rep patt I. Place a marker beg of rnd (= mid under sleeve). When sleeve measures approx. 6–7–8 cm/2.4-2.8-3.1 in, change to needles size 3½ mm. Cont working in patt I, Knit 1 rnd, and incl 1 st both sides of the marker approx. 2 cm /0.8 in until you have 92-98-102 sts on a rnd, and sleeve measures approx. 47-48-49 cm/18.5-18.9-19.3 in. Knit 1 rnd over all sts, and inc 1 st = 93-99-103 sts. Bind off 10-10-12 sts mid under sleeve (5-5-6 sts both sides of the marker). Leave work aside, and knit the other sleeve.

Yoke: Slip all pieces on same circular needle size 3½ mm. Slip sleeve sts over the bound-off sts for armholes = 349-373-391 sts (4 purl-sts not incl). Place markers at each 4 seamlines. Beg raglan-dec: Work until 2 sts rem before a marker, sl 1 st, K1, pssso, K2tog. Cont working in patt II, and rep raglan-dec at each 4 seamline every 2nd rnd. Beg from arrow on front, and check from mid where to beg patt for sleeves and back. Left front is worked same as right front, but in reverse. When patt II is ready, cont working in St st with black yarn until 109-117-123 sts rem. Change to needles size 3 mm. Knit 1 rnd, and dec evenly across the rnd number of sts to be 108-114-120 sts (purl-sts are not incl). Work in patt I as for waist. Change to needles size 3 mm. Work in St st 8 cm/3.1 in, but dec evenly across 1st rnd number of sts to be 90-95-100 sts. Bind off rather loosely.

Finishing: Dampen pieces slightly from WS (not over cable patt). Sew 2 smallest zigzag seams mid front. Cut open between seams. Sew normal zigzag over cut edges.

Left front band: Using needles size 3 mm and black yarn, pick or knit along front edge approx. 149-151-153 sts. Work back and forth 4 rows in St st. Bind off rather loosely. Using needles size 3 mm and black yarn, pick or knit up from WS approx. 149-

Viking Superwash Cardigan

1206-15

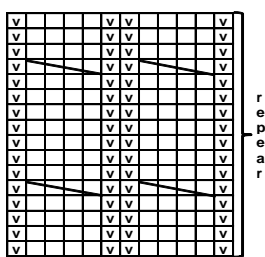
Size	S	M	L
Bust	92	99	108 cm
	36.2	39	42.6 in
Length	65	66	67 cm
	25.6	26	26.4 in
Sleeve length	47	48	49 cm
	18.5	18.9	19.3 in

ALTERNATIVE Yarn: Viking Superwash (100% wool, superwash), Viking Alpaca Sport (30% alpaca, 40% merino wool, 30% nylon), Viking Sportsragg (60% wool, 20% nylon, 20% acrylic), Viking Sportsgarn (100% wool), 50 g ball

151-153 sts. Work 4 rows in St st. Bind off.
Work same for right front band.

Finishing: Sew zipper between front bands.

Pattern I



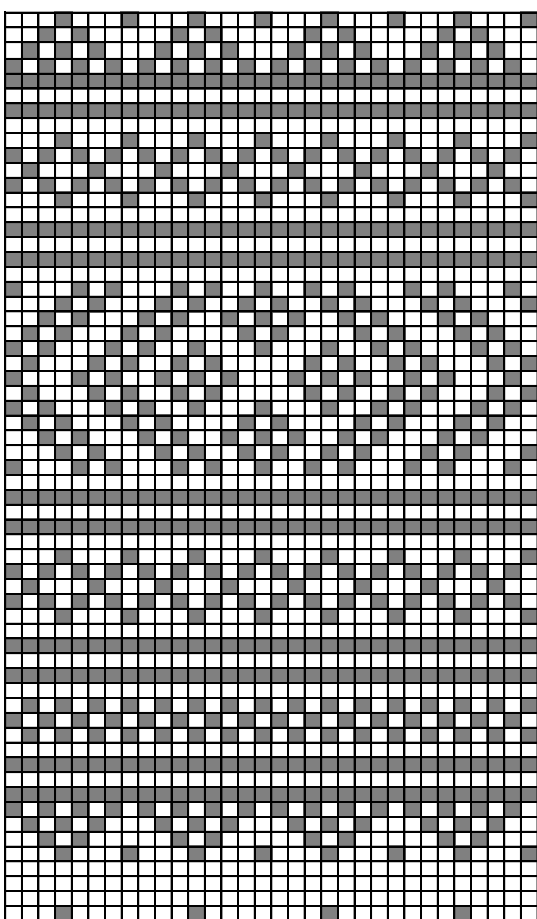
Repeat

□ = knit

◻ = purl

◻ = Slip 2 sts on cn, and hold to front, K2, knit sts from cn

Pattern II



Mid sleeves and back

Begin and end here mid front

□ = Black

■ = White

Viking Superwash

Sweater 1206-16

Size	36	38	40/42	48/50	52	54
Bust/Chest	97	104	111	118	125	132 cm
	38.2	41	43.7	46.4	49.2	51.9 in
Length	65	66	67	68	70	72 cm
	25.6	26	26.4	26.8	27.6	28.3 in
Sleeve length	48	49	50	52	54	55 cm
	18.9	19.3	19.7	20.5	21.3	23.7 in

ALTERNATIVE YARN: Viking Superwash (100% wool, superwash), Viking Alpaca Sport (30% alpaca, 40% merino wool, 30% nylon), Viking Sportsragg (60% wool, 20% nylon, 20% acrylic), Viking Sportsgarn (100% wool), 50 g ball

Off-White, 102	15	16	16	17	18	19 balls
Brown, 118	1	1	1	2	2	2 balls

Circular needle and double pointed needles size 3 and 3½ mm – US 2 or 3 and 4 – UK/Canadian 11 and 10 or 9

Gauge: 23 sts = approx. 10cm/4 in over St st using needles size 3½ mm. **Check your gauge to ensure success.**

Using needles size 3 mm, cast on 192–208–220–230–246–260 sts. Work in rnds 6–6–6–7–7–7 cm/2.4-2.4-2.4-2.8-2.8-2.8 in in K1,P1 rib. Change to needles size 3½ mm. Work in St st, and inc evenly across 1st rnd number of sts to be 224–240–256–272–288–304 sts. Place markers each side, 113–121–129–137–145–153 sts for front, and 111–119–127–135–143–151 sts for back. Work in patt A. When work measures approx. 41-41- 41-41-42–43 cm/16.1-16-1-16.1-16-1-16.5-16.9 in, bind off first and last st of front piece for armholes. Finish back and front separately.

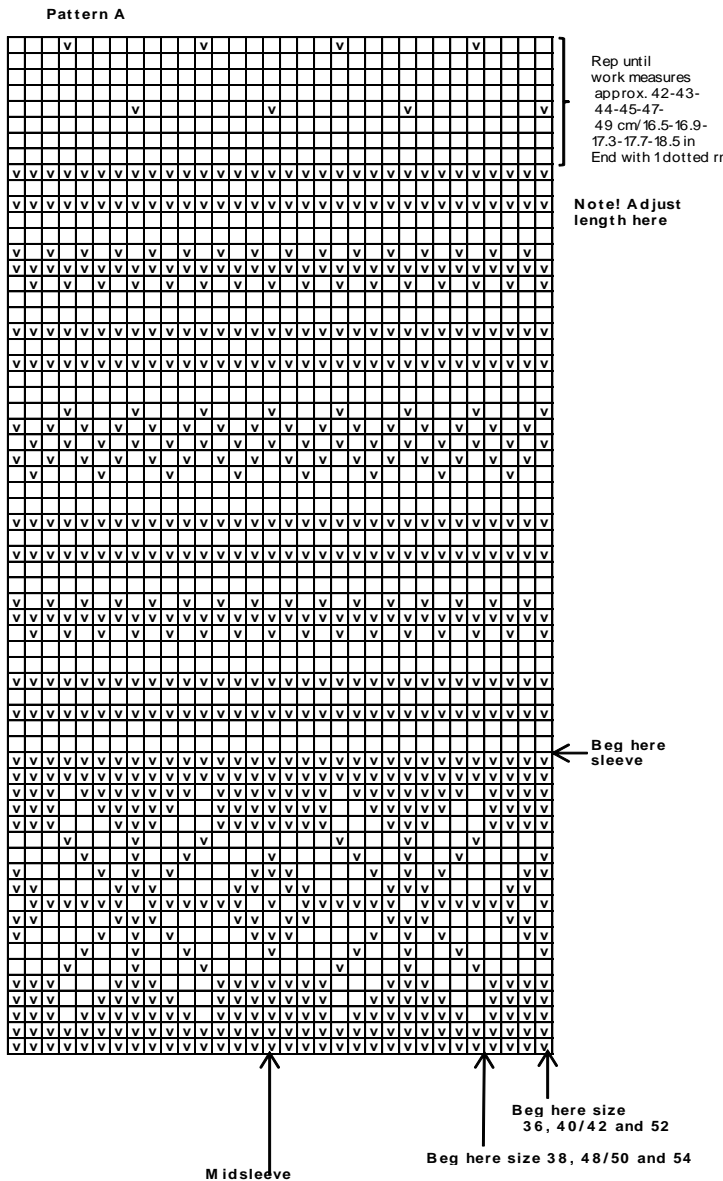
Back: Cont working back and forth. When patt A is ready, work patt B, and after that cont working in St st until work measures 65–66–67–68–70– 72 cm/25.6-26-26.4-26.8-27.6-28.3 in. Bind off.

Front: Work same as for back, but when work measures approx. 58–59–60–60–62–64 cm/22.8-23.3-23.6-23.6-24.4-25.2 in, bind off 15–15–17–17–19–19 mid front sts. Work each side separately. Bind off at neck edge every 2nd row 1x6–7–7–7–7–7, 1x4–4–4–4–4-5, 1x2, and 2x1 st. When front measures same as back, bind off. Work same for the other side, rev all shaping.

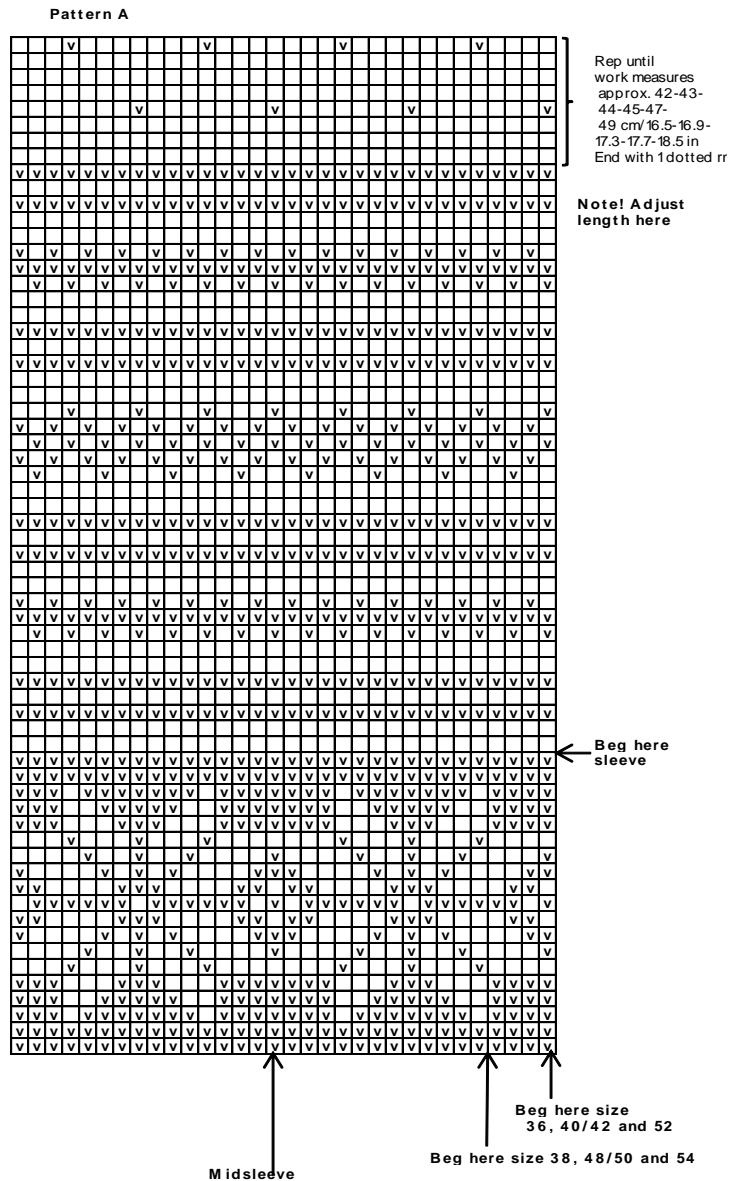
Sleeves: Using needles size 3mm, cast on 46–48–48–50–50–52 sts. Work in rnds 5–5–6–6–7–7 cm/2-2-2.42.4-2.8-2.8 in in K1,P1 rib. Change to needles size 3½ mm. Knit 1 rnd, and inc evenly across rnd number of sts to be 65–67–67–69–69–71 sts. Place a marker beg of rnd (= mid under sleeve). Work patt A as charted, **and** inc 1 st both sides of the marker approx. every 2–1½–1½-1½-1½-1½ cm/0.8-0.6-0.6-0.6-0.6-0.6 in. When sleeve measures approx. 17 cm/6.7 in less than given length, work patt B, and after that cont working in St st until work measures 48–49–50–52–54–55 cm/18.9-19.3-19.7-20.5-21.3-21.7 in (patt should be ready by now), and you have 109–115–121–125–129–133 sts on a rnd. Bind off.

Finishing: Join shoulder seam, 34–37–40–44–47–50 sts for each shoulder.

Neck band: Pick or knit up approx. 102–106-110–112–116–120 sts. Knit 1 rnd, and after that 7–7–7–8–8–8 cm/2.8-2.8-2.8-3.1-3.1-3.1 in in K1,P1 rib. Bind off rather loosely in rib. Fold neck band in double, and sew on WS. Sew on sleeves. Weave in all ends on WS.



= purl on RS, knit on WS
 = knit on RS, purl on WS
 = brown, St st



= purl on RS, knit on WS
 = knit on RS, purl on WS
 = brown, St st

VikingSuperwash

Tunic

1206-17

Size	S	M	L	XL
Bust, approx.	86	90	99	107 cm
	33.9	35.4	39	42.2 in
Length, approx.	78	80	80	82 cm
	30.7	31.5	31.5	32.3 in

ALTERNATIVE YARN: Viking Superwash (100% wool, superwash), Viking Alpaca Sport (30% alpaca, 40% merino wool, 30% nylon), Viking Sportsragg (60% wool, 20% nylon, 20% acrylic), Viking Sportsgarn (100% wool), 50 g ball

Grey, 113	10	11	12	13 balls
multicolor, 169	2	2	2	2 balls

Circular needle and double pointed needles 3 and 3½ mm – US 2 or 3 and 4 – UK/Canadian 11 and 10 or 9

Gauge: 23 sts = approx. 10cm/4 in over St st using needles size 3½ mm. **Check your gauge to ensure success.**

TIP! When working in patt with 2 clr, it's important to maintain the order of yarns on your finger. Always hold the darker clr in front throughout the whole project.

TUNIC

Using needles size 3 mm and grey yarn, cast on 246–256–276–296 sts. Work in rnds 3 cm/1.2 in in St st, purl 1 rnd (= folding edge). Cont working in St st. Place markers each side, 125–129–139–149 sts for front, and 123–127–137–147 sts for back. Dec 1 st both sides of the markers approx. every 3 cm/1.2 in altog. 13–12–12–12 times. Dec before a marker: K2togtbl; after a marker: K2tog. There is now 196–208–228–248 sts. Cont working without dec in St st until work measures 61–62–61–62 cm/24–24.4–24–24.4 in (measured from folding edge). Bind off 16 sts each side (8 sts both sides of the markers). Next rnd: Cast on 69–73–79–83 sts over the bound-off armhole sts (=302–322–354–382 sts). Cont working in rnds in St st with grey yarn, and dec evenly across 1st rnd number of sts to be 288–320–336–368 sts. Work 4 rnds in St st. Work patt and dec as charted = 112–144–160–192 sts. Cont working in St st until work measures approx. 4–4–5–5 cm/1.6–1.6–2–2 in, measured from last patt rnd (or the given length), dec evenly across number of sts to be 112–120–128–136 sts. Work approx. 6 cm/2.4 in in K2tl,P2 rib. Bind off rather loosely.

Armhole edges: Using needles size 3 mm and grey yarn, pick or knit up approx. 80–84–88–92 sts around armholes. Work in rnds 3 cm/1.2 in in K2tbl,P2 rib. Bind off. Weave in all ends on WS.

VikingSuperwash

Sweater

1206-18

Size	S	M	L	XL	XXL
Bust, approx.	96	104	115	122	132 cm
	38.8	41	45.3	48	51.9 in
Length, approx.	65	66	67	68	70 cm
	25.6	26	26.4	26.8	27.6 in
Sleeve length, approx.	48	49	50	52	52 cm
	18.9	19.3	19.7	20.5	20.5 in

ALTERNATIVE YARN: Viking Superwash (100% wool, superwash), Viking Alpaca Sport (30% alpaca, 40% merino wool, 30% nylon), Viking Sportsragg (60% wool, 20% nylon, 20% acrylic), Viking Sportsgarn (100% wool), 50 g ball

White, 100	12	12	13 14	14 balls
Beige, 107	3	3	3 4	4 balls

Circular needle and double pointed needles 3 and 3½ mm – US 2 or 3 and 4 – UK/Canadian 11 and 10 or 9

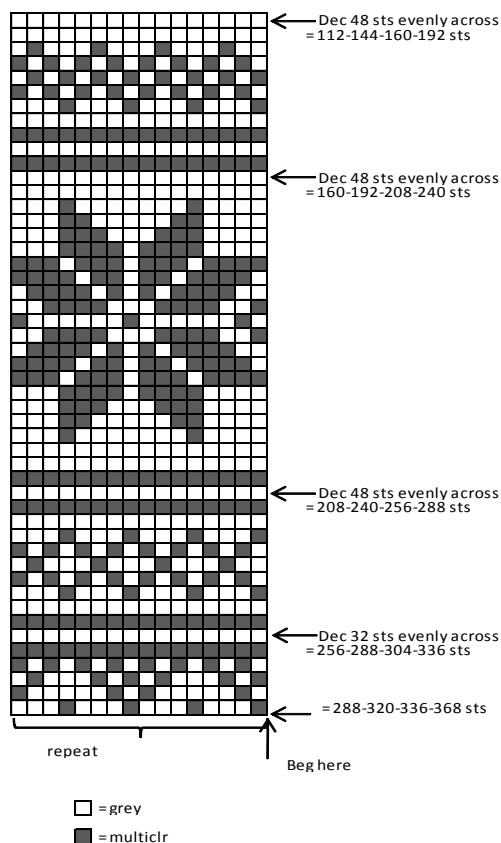
Gauge: 23 sts = approx. 10cm/4 in over St st using needles size 3½ mm. **Check your gauge to ensure success.**

Using needles size 3 mm and white yarn, cast on 216–240–264–280–304 sts. Work patt I. Change to needles size 3½ mm. Cont working in St st. Place markers each side, 109–121–133–141–153 sts for front, and 107–119–131–139–151 sts for back. When work measures approx. 38–39–40–41–43 cm/15–15.4–15.7–16.1–16.9 in, work patt A. Knit 1 rnd with white yarn, and bind off each side 12 sts (6 sts both sides of the markers). Leave work aside, and knit sleeves.

Sleeves: Using needles size 3 mm and white yarn, cast on 48–48–48–56–56 sts. Work patt I 1½ times = 6 squares in height. Change to needles size 3½ mm. Work in St st, and inc evenly across 1st rnd number of sts to be 52–56–62–68–70 sts. Place a marker beg of rnd (= mid under sleeve. Inc 1st both sides of the marker approx. every 3½–4–4–3½–3½ cm/1.4–1.6–1.6–1.4–1.4 in. When work measures approx. 46–47–48–50–52 cm/18.1–18.9–19.3–19.7–20.5 in, and you have 76–80–84–92–96 sts on a rnd, work patt A, after that knit 1 rnd with white yarn, and bind off 12 sts mid under sleeve (6 sts both sides of the marker). Leave work aside, and knit the other sleeve.

Yoke: Beg from back (right shoulder), work patt B (check from arrow in the chart where to beg), and slip all pieces on same circular needle size 3½ mm. Slip sleeve sts over the bound-off sts for armholes = 320–352–384–416–448 sts. Cont working in rnds in patt, and dec as charted. When patt B is ready, cont working in patt C, D and E. When patt E is ready, work 4 rnds in St st in white yarn, and dec evenly across 2nd rnd number of sts to be 116–120–120–124–128 sts. Change to needles size 3mm. Work approx. 14–15–15–16–16–16 cm/5.5–5.9–5.9–6.3–6.3–6.3 in in K1,P1 rib. Bind off in rib.

Sew seams under arms. Weave in all ends on WS.



Viking Superwash

Long cardigan

1206-19

Size	XS	S	M	L	XL	XXL
Bust	89	95	103	110	116	123 cm
	35	37.4	40.6	43.3	45.6	48.4 in
Length	82	84	86	88	90	90 cm
	32.3	33.1	33.9	34.6	35.4	35.4 in
Sleeve length	48	49	50	51	52	52 cm
	18.9	19.3	19.7	20.1	20.5	20.5 in

ALTERNATIVE Yarn: Viking Superwash (100% wool, superwash), Viking Alpaca Sport (30% alpaca, 40% merino wool, 30% nylon), Viking Sportsragg (60% wool, 20% nylon, 20% acrylic), Viking Sportsgarn (100% wool), 50 g ball

Light Grey, 113	18	19	19	20	20	21	balls
White, 100	2	2	2	2	3	3	balls

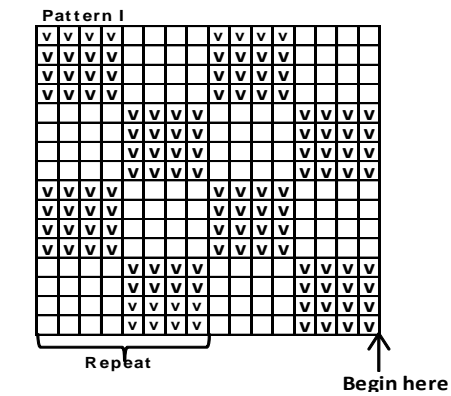
Circular needle and double pointed needles size 3 and 3½ mm – US 2 or 3 and 4 – UK/Canadian 11 and 10 or 9
+ 9-9-10-10-11-11 buttons

Gauge: 23 sts = approx. 10 cm/4 in over St st using needles size 3½ mm. **Check your gauge to ensure success.**

TIP! When working a patt with 2 clrs, it's important to maintain the order of yarns on your finger. Always keep the darker clr in front throughout the whole project.

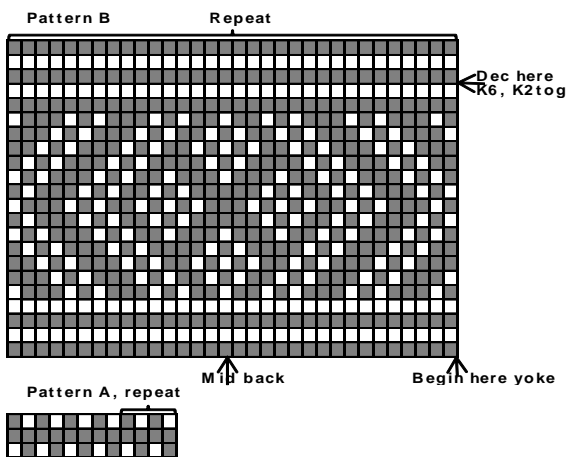
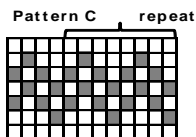
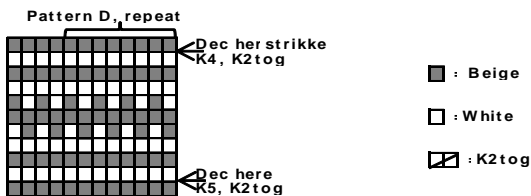
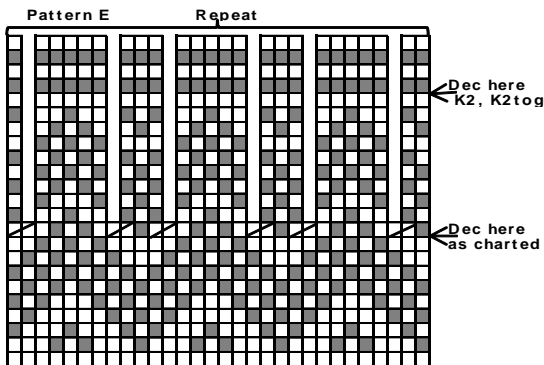
Using needles size 3mm and grey yarn, cast on 333–349–365–381–413 sts. Work back and forth in K1,P1 rib. When work measures 3 cm, make a buttonhole to right edge: Work 5 sts, bind off 3 sts (next row: Cast on 3 sts over the bound-off sts). When rib measures 5 cm/2 in, slip first and last 14 sts on holders (= front edge bands). Change to needles size 3½ mm, and knit 1 row. Place markers each side, 73-77-81-85-89-93 sts for both fronts (front band sts not incl), and 159-167-175-183-191-199 sts for back. Cast on 4 new sts to the end of the row (= purl each rnd, to be cut open later, not incl in the number of sts). Inc sts for cable patt as foll: St st over 64-68-72-76-80-84 sts, inc 14 sts evenly across next 18 sts, St st over 141-149-157-165-173-181 sts, inc 14 sts evenly across next 18 sts, St st over 64-68-72-76-80-84 sts = 333-349-365-381-397-413 sts on a rnd (front band sts not incl). Cont working in rnds as foll: St st over 64-68-72-76-80-84 sts, patt II over 32 sts, St st over 141-149-157-165-173-181 sts, patt II over 32 sts, and St st over 64-68-72-76-80-84 sts. Cont working in rnds as established, and dec 1 st both sides of patt II approx. every 2 cm/0.8 in 28 times. When work measures approx. 50-52-53-54-55-54 cm/19.7-20.5-20.9-21.3-21.7-21.3 in, and there is 221-237-253-269-285-301 sts on a rnd, dec on next 2 rnds all purl-sts from patt II: Work until 1 st rem before patt II, sl 1 st, knit first purl-st, and pssso. Purl 2 sts, and K2tog. Rep dec at each purl-panel. Rep dec next rnd, without purl-sts in between. On 3rd rnd, dec 1 st over each cable twist = 18 sts rem for patt II. There is now 193-209-225-241-257-273 sts on a rnd. Cont working in St st. When work measures approx. 51-53-54-55-56-56 cm/20.1-20.9-21.3-21.7-22-22 in, work patt I, and after that work in St st with grey yarn, until work measures approx. 82-84-86-88-90-90 cm/32.3-33.1-33.9-34.6-35.4-35.4 in.

Sleeves: Using needles size 3mm and grey yarn, cast on 64 sts (same for all sizes). Work in rnds 5 cm/2 in in St st. Purl 1 rnd (= folding edge), and then patt III. Change to needles size 3½ mm, and cont working with grey yarn. Place a marker beg of rnd (= mid under sleeve). Inc as foll: Inc 1-1-2-2-3-3 sts evenly across first 23 sts, inc 14 sts evenly across next 18 sts, and 1-1-2-2-3-3 sts over last 23 sts = 80-80-82-82-84-84 sts on a rnd. Work as foll: St st over 24-24-25-25-26-26 sts, patt II over 32 sts, and St




■ = purl

□ = knit



Finishing: Sew on front edge bands, and seam allowances over cut edges. Fold neck edge in double over cut edge, and sew on WS. Sew on sleeves, and sew seam allowance over cut edges. Sew on buttons. Weave in all ends on WS.

 = Sl 5 sts on cn, and hold to back, K5, knit sts from cn

Pattern III

Repeat

Beg here sizes S, L and XXL

Beg here x liten, M and XL

Legend:
 Grey square = Grey
 White square = White

VikingSuperwash

Cardigan with hood

1206-20

Size	36	38	40/42	48/50	52	54
Bust/Chest, approx.	101	108	115	122	129	136 cm
	39.2	46.4	45.3	48	50.7	53.5 in
Length, approx.	65	66	67	68	70	72 cm
	25.6	26	26.4	26.8	27.6	28.3 in
Sleeve length	48	49	50	52	54	55 cm
	18.9	19.3	19.7	20.5	21.3	21.7 in

ALTERNATIVE YARN: Viking Superwash (100% wool, superwash), Viking Alpaca Sport (30% alpaca, 40% merino wool, 30% nylon), Viking Sportsragg (60% wool, 20% nylon, 20% acrylic), Viking Sportsgarn (100% wool), 50 g ball

Turquoise, 129	10	10	11	12	13	13 balls
Violet, 168	4	4	5	5	6	6 balls
Pink, 164	2	2	2	2	2	2 balls
Blue, 127	1	1	1	1	1	1 ball

Circular needle and double pointed needles size 3 and 3½ mm – US 2 or 3 and 4 – UK/Canadian 11 and 10 or 9 + zipper

Gauge: 23 sts = approx. 10 cm/4 in over St st using needles size 3½ mm. **Check your gauge to ensure success.**

TIP! When working a patt with 2 clr, it's important to maintain the order of yarns on your finger. Always hold the darker yarn in front throughout the whole project.

Using needles size 3 mm and turquoise yarn, cast on 210–226–242–254–270–286 sts. Work back and forth 6-6-6-7-7-7 cm/2.4-2.4-2.4-2.8-2.8-2.8 in in K2,P2 rib. Change to needles size 3½ mm. Work in St st, and inc evenly across 1st rnd number of sts to be 225–241–257–273–289–305 sts. Cast on 4 new sts to the end of row, purl each rnd (= to be cut open later on). These new sts are not included in the number of sts. Place markers each side, 54-58-62-66-70-74 sts for front, and 117-125-133-141-149-157 sts for back. When work measures 30-31-32-33-35-37 cm/11.8-12.2-12.6-13-13.8-14.6 in, work in patt I as charted. When work measures approx. 58–59–60–60-62–64 cm/22.8-23.2-23.6-23.6-24.4-25.2 in, bind off 20-22-22-22-24 mid front sts (incl 4 purl sts). Cont working back and forth. Bind off beg of each row 1x5-5-6-5-6-6, 1x3, 1x2, and 1-1-1-2-2-2x1 st. When work measures 65-66-67-68-70-72 cm/25.6-26-26.4-26.8-27.6-28.3 in, bind off.

Sleeves: Using needles size 3 mm and turquoise yarn, cast on 44–48–48–52–52–56 sts. Work in rnds 5–5–6–6–7-7cm/ 2-2-2.4-2.4-2.8-2.8 in in K2,P2 rib. Change to needles size 3½ mm. Work in St st, and inc evenly across 1st rnd number of sts to be 65–67–67–69–69–71sts. Place a marker beg of rnd (= mid under sleeve). Inc 1 st both sides of the marker approx. every 1½ cm/0.6 in (same for all sizes) until you have 109-115-121-125-129-133 sts, and sleeve measures approx. 48–49–50–52–54–55 cm/18.9-19.3-19.7-20.5-21.3-21.7 in. Turn work inside out, and work 6 rnds in St st for seam allowance. Bind off.

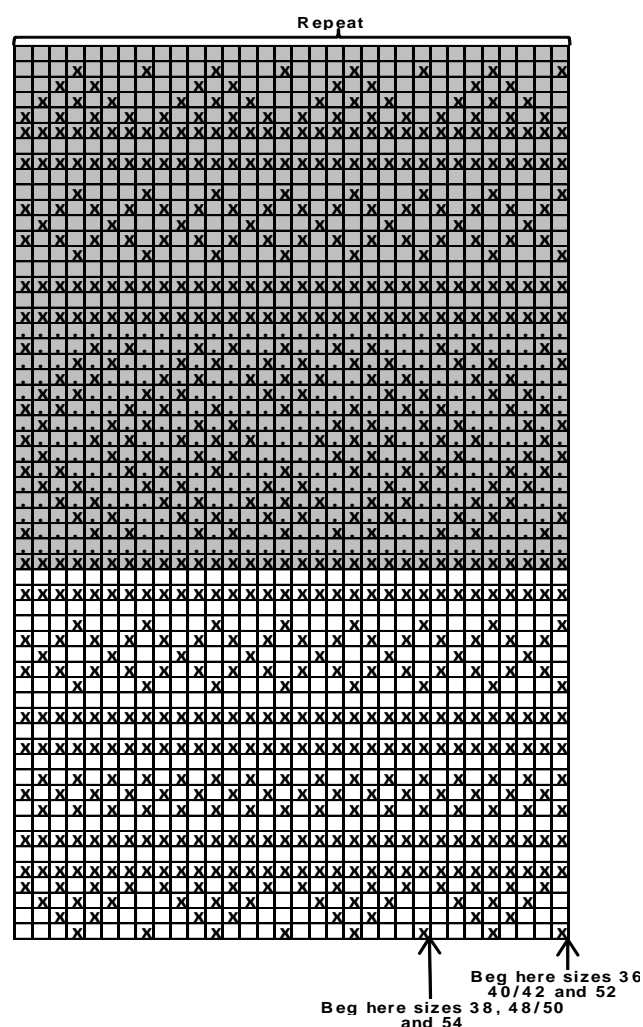
Finishing: Dampen pieces slightly from WS. Sew 2 smallest zigzag seams around armholes (= measure width from sleeve top), and mid front. Cut open between seams. Sew normal zigzag seam over cut edges. Join shoulder seams, 35–38–41–45–48–51 sts for each shoulder.

Left front band: Using needles size 3 mm and turquoise yarn, pick or knit up approx. 137-139-141-141-145-151 sts. Work 4 rows in St st. Bind off. Using needles size 3 mm and turquoise yarn, pick or knit up from WS approx. 137-139-141-141-145-151 sts. Work 4 rows in St st.

Work same for right front band.

Hood: Beg from right front band, using needles size 3 mm and violet yarn, pick or knit up approx. 98-102-106-110-110-114 sts along neck edge, and work back and forth 3 cm/1.2 in in K2,P2 rib. Change to needles size 3½ mm. Cont working in St st inside 8 rib sts at each edge. Inc on 1st row 4 sts evenly across each shoulder, 2 sts both sides of each shoulder seam (= 8 sts). Place a marker mid back. When hood measures 5 cm/2 in, inc 1 st both sides of the marker. Rep inc approx. every 4 cm/1.6 in altog. 6-6-6-7-7-7 times. When work hood measures approx. 28-28-29-29-30-30 cm/11-11-11.4-11.4-11.8-11.8 in, dec 1 st both sides of markers. Rep dec every 4th row 3 times, and after that every 2nd row until hood measures approx. 34-35-36-36-37-38 cm/13.4-13.8-14.2-14.2-14.6-15 in. Bind off. Join top seam.

Finishing: Sew on sleeves, and seam allowances on WS. Sew zipper between front edge bands. Weave in all ends on WS.



- = Red (blue)
- = Rødt (lilla)
- = White (pink)
- = White (pink)
- = Navy blue (turquoise)

Viking Superwash

Sweater with hood

1206-21

Size	36	38	40/42	48/50	52	54
Bust/Chest	97	104	111	118	125	132 cm
	38.2	41	43.7	46.4	49.2	51.9 in
Length	65	66	67	68	70	72 cm
	25.6	26	26.4	26.8	27.6	28.3 in
Sleeve length, approx.	48	49	50	52	54	55 cm
	18.9	19.3	19.7	20.5	21.3	21.7 in

ALTERNATIVE YARN: Viking Superwash (100% wool, superwash), Viking Alpaca Sport (30% alpaca, 40% merino wool, 30% nylon), Viking Sportsragg (60% wool, 20% nylon, 20% acrylic), Viking Sportsgarn (100% wool), 50 g ball

Violet, 168	10	10	11	11	12	12 balls
Turquoise, 129	6	7	7	8	8	8 balls
Yellow, 145	2	2	2	2	3	3 balls

Circular needle and double pointed needles size 3 and 3½ mm – US 2 or 3 and 4 – UK/Canadian 11 and 10 or 9

Gauge: 23 sts = approx. 10 cm/4 in over St st using needles size 3½ mm. **Check your gauge to ensure success.**

TIP! When working in a patt with 2 clr, it's important to maintain the order of yarns on your finger. Always hold the darker clr in front throughout the whole project.

Using needles size 3 mm and violet yarn, cast on 192–208–220–230–246–260 sts. Work in rnds 6–6–6–7–7 cm/2.4–2.4–2.4–2.8–2.8–2.8 in in K1,P1 rib. Change to needles size 3½ mm. Work in St st, and inc evenly across 1st rnd number of sts to be 224–240–256–272–288–304 sts. Place markers each side, 113–121–129–137–145–153 sts for front, and 111–119–127–135–143–151 sts for back. When work measures approx. 30–31–32–33–35–37 cm/11.8–12.2–12.6–13–13.8–14.6 in, work patt I, and after that patt II, work first and last st on front in basic clr = side sts. Beg and end patt from arrow, both front and back. When patt II is ready, cont working in St st with turquoise yarn. When work measures 58–59–60–62–64 cm/22.8–23.2–23.6–23.6–24.4–25.2 in, bind off 15–15–17–17–19–19 mid front sts. Cont working back and forth, and bind off beg of each row 1x6–7–7–7–7–7, 1x4–4–4–4–5, 1x2, and 2x1 st. When work measures 65–66–67–68–70–72 cm/25.6–26–26.4–26.8–27.6–28.3 in, bind off.

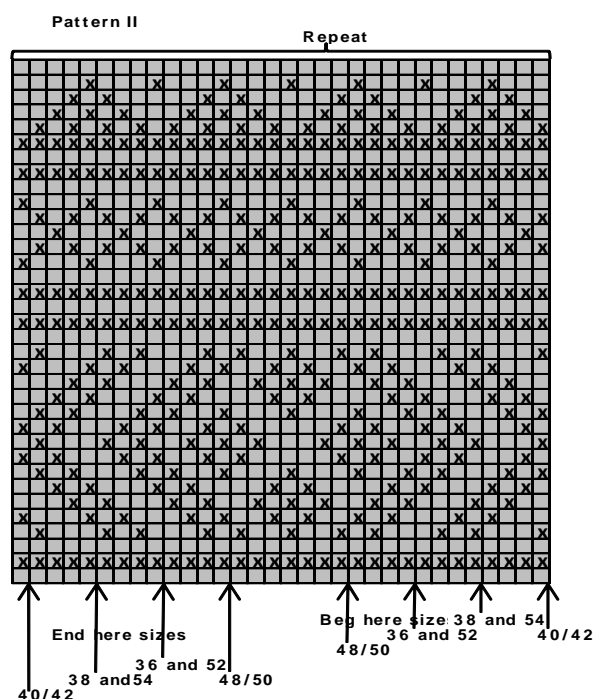
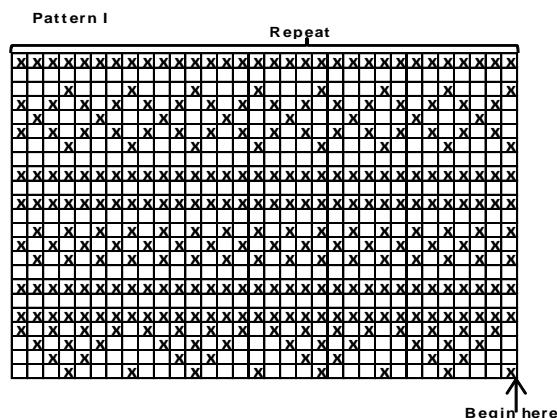
Sleeves: Using needles size 3 mm and violet yarn, cast on 46–48–48–50–50–52 sts. Work in rnds 5–5–6–6–7–7 cm/2–2–2.4–2.4–2.8–2.8 in in K1,P1 rib. Change to needles size 3½ mm. Cont working in St st, and inc evenly across 1st rnd number of sts to be 65–67–67–69–69–71 sts. Place a marker beg of rnd (= mid under sleeve). Cont working in St st, **and** inc 1 st both sides of the marker approx. every 1½ cm/ 0.6 in (same for all sizes) until you have 109–115–121–125–129–133 sts on a rnd, and sleeve measures approx. 48–49–50–52–54–55 cm/18.9–19.3–19.7–20.5–21.3–21.7 in. Turn work inside out, and work 6 rnds in St st for seam allowance. Bind off.

Finishing: Dampen work slightly from WS. Sew 2 smallest zigzag seams around armholes (= measure width from sleeve top). Cut open between seams. Sew normal zigzag seam over cut edges. Join shoulder seams, 35–38–41–45–48–51sts for each shoulder.

Neck band + hood: Using needles size 3 and turquoise yarn, pick or knit up approx. 102–106–110–112–116–120 sts. Work in rnds in K1,P1 rib. When work measures 2 cm/0.8, bind off mid front st. Cont working back and forth. Inc 2 sts 3 times over each shoulder: Work until 1 knit-st approx. 7 sts before shoulder

seam, inc 1 st into this st + 1 st to next purl st, rep inc with 5 sts between, rep inc altog 3 times. Rep inc over the other shoulder (= altog.12 sts on a rnd). Cont working in rib, and rep inc after 4 cm/1.6 in. When neck edge measures approx. 6 cm/2.4 in, change to needles size 3½ mm. Cont working in St st inside 8 rib sts at each edge. Place a marker mid back. When hood measures 2 cm/0.8 in (measured from rib), inc 1 st both sides of the marker. Rep inc every 4 cm/1.6 in altog. 6–6–6–7–7–7 times. When work measures approx. 28–28–29–29–30–30 cm/11–11–11.4–11.4–11.8–11.8 in, dec 1 st both sides of the marker. Rep dec every 4th row 3 times, and after that every 2nd row until work measures approx. 34–36–36–37–38 cm/13.4–13.8–13.8–14.6–15 in. Bind off. Join top seam.

Finishing: Sew on sleeves. Sew seam allowances over cut edges. Weave in all ends on WS.



Note: Beg and end according to arrows, both front and back

- = Turquoise
- ⊗ = Yellow
- ⊗ = Yellow
- = Violet

VikingSuperwash

Sweater

1206-22

Size	S	M	L	XL
Bust, approx.	82	90	98	108 cm
	32.3	35.4	38.6	42.6 in
Length, approx.	67	69	69	69 cm
	26.4	27.2	27.2	27.2 in
Sleeve length, approx.	49	50	51	51 cm
	19.3	19.7	20.1	20.1 in

ALTERNATIVE YARN: Viking Superwash (100% wool, superwash), Viking Alpaca Sport (30% alpaca, 40% merino wool, 30% nylon), Viking Sportsragg (60% wool, 20% nylon, 20% acrylic), Viking Sportsgarn (100% wool), 50 g ball

Grey, 113	11	12	13	14 balls
Neon Pink, 175	3	3	3	3 balls

Circular needle and double pointed needles 3 and 3½ mm – US 2 or 3 and 4 – UK/Canadian 11 and 10 or 9

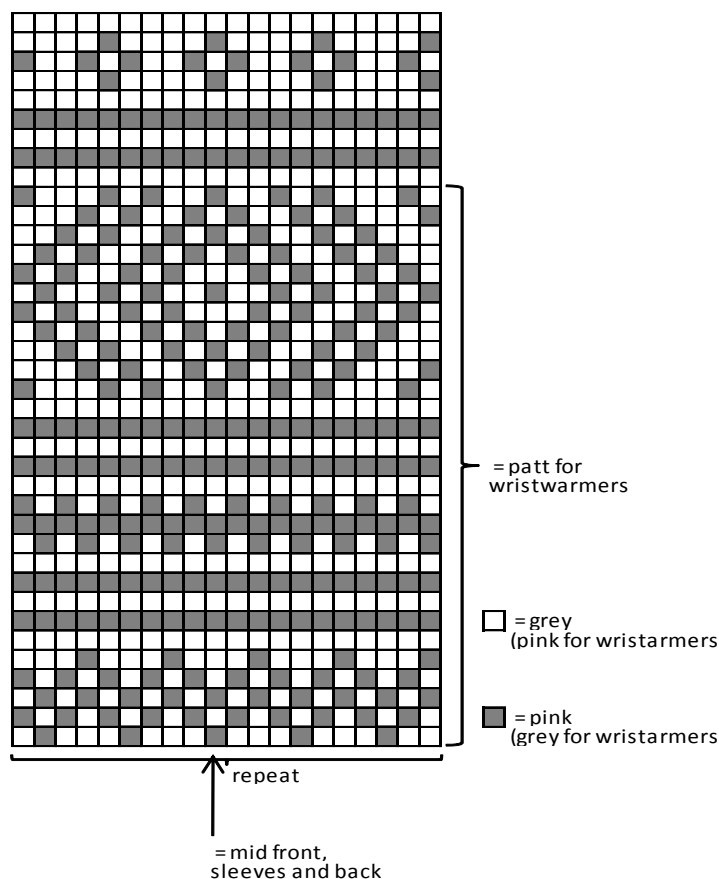
Gauge: 23 sts = approx. 10cm/4 in over St st using needles size 3½ mm. **Check your gauge to ensure success.**

TIP! When working in patt with 2 clr, it's important to maintain the order of yarns on your finger. Always hold the darker clr in front throughout the whole project.

Using needles size 3 mm and grey yarn, cast on 216–232–256–280 sts. Work in rnds 3 cm/1.2 in in St st. Next rnd: *K2tog, 1 yo*, rep *-* across the rnd + 3 cm/1.2 in in St st. Change to needles size 3½ mm. Cont working in St st. Place markers each side, 109–117–129–141 sts for front, and 107–115–127–139 sts for back. When work measures approx. 10–11–11–11 cm/4–4.3–4.3–4.3 in, dec 1 st both sides of the markers (= 4 sts on a rnd). Rep dec every 5th rnd altog. 11–11–12–12 times = 172–188–208–232 sts. Cont working without dec until work measures 35–36–36–36 cm/13.8–14.2–14.2–14.2 in, inc 2 sts at each side every 4th rnd altog. 4 times = 188–204–224–248 sts. Cont working in St st until work measures approx. 42–43–43–43 cm/16.5–16.9–16.9–16.9 in, bind off each side 12 sts (6 sts both sides of the markers). Leave work aside, and knit sleeves.

Sleeves: Using needles size 3 mm and grey yarn, cast on 44–48–52–52 sts. Work edge same as for body. Change to needles size 3½ mm. Knit 1 rnd, and inc evenly across number of sts to be 57–61–65–69 sts. Place a marker beg of rnd (= mid under sleeve. Inc 1st both sides of the marker approx. every 4 cm/1.6 in until you have 79–83–87–91 sts on a rnd, and sleeve measures the given length, or as desired. Bind off 12 sts mid under sleeve (6 sts both sides of the marker). Leave work aside, and knit the other sleeve.

Yoke: Slip all pieces on same circular needle size 3½ mm. Slip sleeve sts over the bound-off sts for armholes = 298–322–350–382 sts. Place markers at each 4 seamlines. Cont working in rnds in patt (check from mid where to beg patt for each piece), and beg raglan-dec: Work until 3 sts rem before a marker, K2togtbl, K2 (basic clr), K2. Rep dec at each seamline every 2nd rnd. When patt is ready, cont working in St st with grey yarn, until you have altog. 25–26.28–29 raglan-dec and 98–114–126–150 sts rem on a rnd. Size XL: Dec evenly across the rnd number of sts to be 132 sts. Work approx. 5 cm/2 in in K1,P1 rib. Bind off rather loosely. Sew seams under arms. Weave in all ends on WS.



WRISTWARMERS

Using needles size 3 mm and pink yarn, cast on 40 sts. Work in rnds 3 cm/1.2 in in K1,P1 rib. Change to needles size 3½ mm. Cont working in patt for wristwarmers as charted. When patt is ready, cont working in St st with pink yarn. Place markers with at each edge, 20 sts for both sides. **Inc for thumb gusset:** Beg from side marker, K3, M1, K1, M1. Rep inc every 2nd rnd, with 2 sts more between inc each time until you have 11 sts for the gusset (try on the wristwarmer, and inc 1–2 times more if needed). Slip 11 gusset sts on a holder, cast on 1 st behind gusset sts = 40 sts on a rnd. Work 4 cm/1.6 in in St st. Change to needles size 3 mm. Work 2 cm/0.8 in in K1,P1 rib. Bind off rather loosely. Break yarn, and weave in on WS.

Thumb: Slip sts from holder on double pointed needles size 3½ mm, and knit or pick up 5 sts along the other edge = 16 sts. Work in rnds 2 cm/0.8 in in K1,P1 rib. Break yarn, and weave in on WS.

Work same for the other wristwarmer, with thumb gusset on the opposite side.

Weave in all ends on WS.

Viking Superwash

Cardigan with hood

1206-23

Size	36	38	40/42	48/50	52	54
Bust/Chest	107	107	114	121	128	135 cm
	42.2	42.2	44.8	47.6	52.4	53.1 in
Length	65	66	67	68	70	72 cm
	25.6	26	26.4	26.8	27.6	28.3 in
Sleeve length, approx.	48	49	50	52	54	55 cm
	18.9	19.3	19.7	20.5	21.3	21.7 in

ALTERNATIVE YARN: Viking Superwash (100% wool, superwash), Viking Alpaca Sport (30% alpaca, 40% merino wool, 30% nylon), Viking Sportsragg (60% wool, 20% nylon, 20% acrylic), Viking Sportsgarn (100% wool), 50 g ball

Black, 103	16	17	18	19	20	20 balls
Orange, 151	1	1	1	1	1	1 ball
Violet, 168	1	1	1	1	1	1 ball
Pink, 164	1	1	1	1	1	1 ball
Yellow, 145	1	1	1	1	1	1 ball
Turquoise, 129	1	1	1	1	1	1 ball

Circular needle and double pointed needles size 3 and 3½ mm – US 2 or 3 and 4 – UK/Canadian 11 and 10 or 9 + zipper

Gauge: 23 sts = approx. 10 cm/4 in over St st using needles size 3½ mm. **Check your gauge to ensure success.**

TIP! When working in a patt with 2 clr, it's important to maintain the order of yarns on your finger. Always hold the darker clr in front throughout the whole project.

Using needles size 3 mm and black yarn, cast on 210–226–242–254–270–286 sts. Work 6–6–6–7–7–7 cm/2.4–2.4–2.4–2.8–2.8–2.8 in in K2,P2 rib. Change to needles size 3½ mm. Work in St st, and inc evenly across 1st rnd number of sts to be 225–241–257–273–289–305 sts. Cast on 4 new sts to the end of the row (purl these sts each rnd = to be cut open later on). Place markers each side, 54–58–62–66–70–74 sts for each front, and 117–125–133–141–149–157 sts for back. When work measures approx. 28–29–30–30–32–34 cm/11–11.4–11.8–11.8–12.6–13.4 in, work patt I as charted, but when work measures approx. 58–59–60–60–62–64 cm/22.8–23.2–23.6–23.6–24.4–24.8 in, bind off 20–22–22–22–22–24 mid front sts for neck edge (incl. 4 purl-sts). Cont working back and forth. Bind off beg of each row 1x5–5–6–6–6–6, 1x3, 1x2, and 1–1–1–2–2–2x1 st. When work measures 65–66–67–68–70–72 cm/25.6–26–26.4–26.8–27.6–28.3 in, bind off.

Sleeves: Using needles size 3 mm and black yarn, cast on 44–48–48–52–52–56 sts. Work 6–6–6–7–7–7 cm/2.4–2.4–2.4–2.8–2.8–2.8 in in K1,P1 rib. Change to needles size 3½ mm. Cont working in St st, and inc evenly across 1st rnd number of sts to be 65–67–67–69–69–71 sts. Place a marker beg of rnd (= mid under sleeve). Cont working in St st, and inc 1 st both sides of the marker approx. every 2–1½–1½–1½–1½–1½ cm/ 0.8–0.6–0.6–0.6–0.6–0.6 in. When sleeve measures approx. 41–42–43–45–47–48 cm/16.1–16.5–16.9–17.7–18.5–18.9 in, work patt II. When patt II is ready, cont working in St st with black yarn until you have 109–115–121–125–129–133 sts on a rnd, and sleeve measures approx. 48–49–50–52–54–55 cm/18.9–19.3–19.7–20.5–21.3–21.7 in. Turn work inside out, and work 6 rnds in St st for seam allowance. Bind off.

Finishing: Dampen work slightly from WS. Sew 2 smallest zigzag seams around armholes (= measure width from sleeve top) and mid front. Cut open between seams. Sew normal zigzag seam over cut edges. Join shoulder seams.

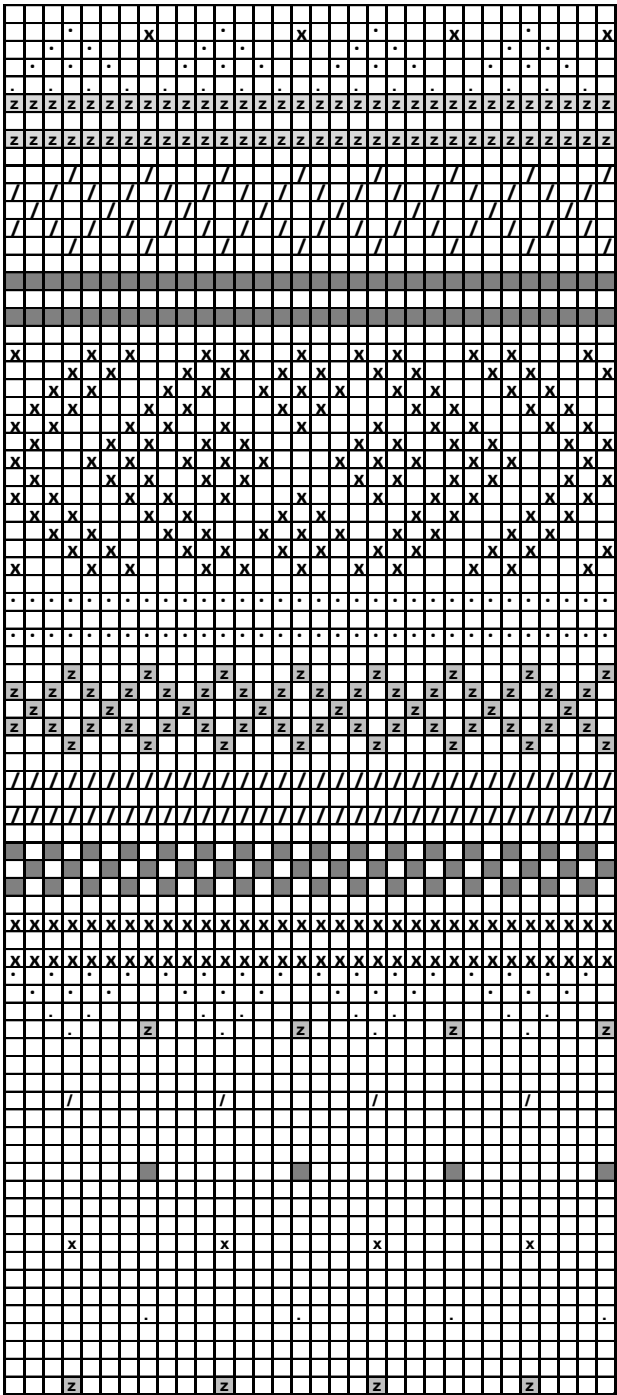
Left front band: Using needles size 3 mm and black yarn, pick or knit up approx. 137–139–141–141–145–151 sts along front edge. Work back and forth r rows in St st. Bind off rather loosely. Using needles size 3 mm and black yarn, pick or knit up from S approx. 137–139–141–141–145–151 sts. Work 4 rows in St st. Bind off.

Work same for right front edge.


Hood: Beg from right front band. Using needles size 3 and black yarn, pick or knit up approx. 98–102–106–110–110–114 sts. Beg from RS, and work back and forth 3 cm/1.2 in in K2,P2 rib. Cont working in St st inside 8 rib sts at each edge. Inc 4 sts evenly over each shoulder on first row, 2 sts each side of the shoulder seams (= 8 sts). Place a marker mid back. When hood measures 5 cm/2 in, inc 1 st both sides of the marker. Rep inc every 4 cm/1.6 in altog. 6–6–6–7–7–7 times. When work measures approx. 28–28–29–29–30–30 cm/11–11–11.4–11.4–11.8–11.8 in, dec 1 st both sides of the marker. Rep dec every 4th row 3 times, and after that every 2nd row until work measures approx. 34–36–36–37–38 cm/13.4–13.8–13.8–14.6–15 in. Bind off. Join top seam.


Finishing: Sew on sleeves. Sew seam allowances over cut edges. Sew zipper between front edges.

Pattern I




p
a
t
t
e
r
n
I
I

 = turquoise

 = yellow

 = pink

 = violet

 = orange

 = black

Beg here sizes 38, 48/50
and 54

Beg here sizes 36,
40/42 and 52