

Viking Bjørk

Dress

1204-1

Size:	S	M	L
Bust:	88	96	104 cm
	34.6	38.8	42 in
Waist:	79	84	94 cm
	31.1	33.1	37 in
Hips:	92	98	106 cm
	36.2	38.6	41.8 in
Length:	96	100	100 cm
	38.8	39.4	39.4 in

ALTERNATIVE YARN: Viking Bjørk (90% cotton, 10% merino wool), Viking Alpaca Silk (50% alpaca, 50% silk), 50 g ball

Off-White, 5029 10 11 balls

Circular needle and double pointed needles size 2 ½ and 3 mm – US 1 or 2 and 2 or 3 – UK/Canadian 13 or 12 and 11

Gauge: 25 sts = approx. 10 cm (4 in) over St st using needles size 3 mm. **Check your gauge to ensure success.**

Pattern A:

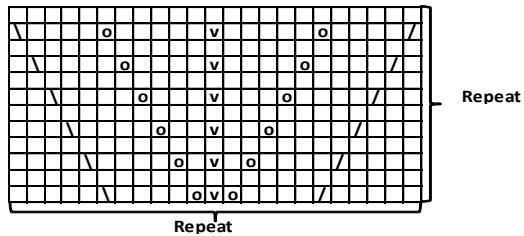
First rnd: *Sl 1 st, K1, pssso, K9, 1 yo, P1, 1 yo, K9, K2tog*, rep *-* across the rnd. **Second rnd:** Knit across the rnd. Rep these 2 rnds.

DRESS

Using needles size 2 ½ mm, cast on 483 - 506 - 529 sts. Work 6 rnds in Garter st. Change to needles size 3 mm, and work and rep chart A until work measures approx. 8 cm (3.1 in). Cont working in patt B until work measures approx. 24 - 26 - 26 cm (9.4-10.2-10.2 in) (end with a complete patt). Work in patt C. After patt C 273 - 286 - 299 sts rem. Work 6 rnds in Garter st, and dec evenly across 1st rnd number of sts to be 228 - 246 - 264 sts. Place markers each side, 115 - 123 - 133 sts for front and 113 - 123 - 131 sts for back. Beg from arrow, from left side, and work as foll: St st over 3 - 4 - 6 sts, *patt D over 33 sts, St st over 5 - 8 - 11 sts*, rep *-* 6 times, but end with 2 - 4 - 5 sts in St st. Cont working as established. Dec 1 st end of each St st-panel. Rep dec approx. every 5 ½ - 5 - 6 cm (2.2-2-2.4 in) altog. 5 - 6 - 5 times until 198 - 210 - 234 sts rem on a rnd. Cont working as established until work measures 63 - 66 - 66 cm (24.8-26-26 in). Inc 1 st end of each St st-panel. Rep inc. approx. every 4 - 3 - 3 cm (1.6-1.2-1.2 in) until you have 222 - 240 - 264 sts on a rnd, and work measures 80 - 82 - 82 cm (31.5-32.3-32.2 in). Bind off 16 sts each side (8 sts both sides of the sidemarkers). Cast on 73 - 80 - 84 sts over the sts bound-off for armholes = 336 - 368 - 400 sts on a rnd. Change to needles size 2 ½ mm. Cont working in Garter st. When work measures 1 cm (0.4 in), beg dec for neck edge: *K14, K2tog*, rep *-* across the rnd. Rep dec every 1 - 1 ½ - 1 ½ cm (0.4-0.6-0.4 in), with 1 st less between dec until 210 - 230 - 225 sts rem, and Garter st edge measures approx. 8 - 10 - 12 cm (3.1-4-4.7 in). Bind off rather tightly.

Weave in all ends on WS.

Pattern B



□ = re Knit

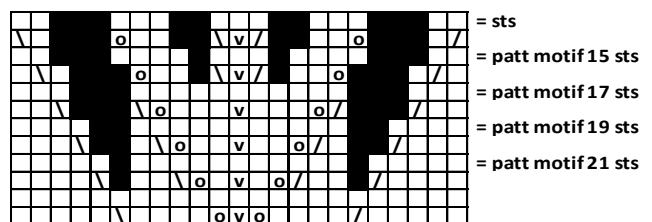
▤ = Purl

◻ = 1 yo

▧ = K2tog

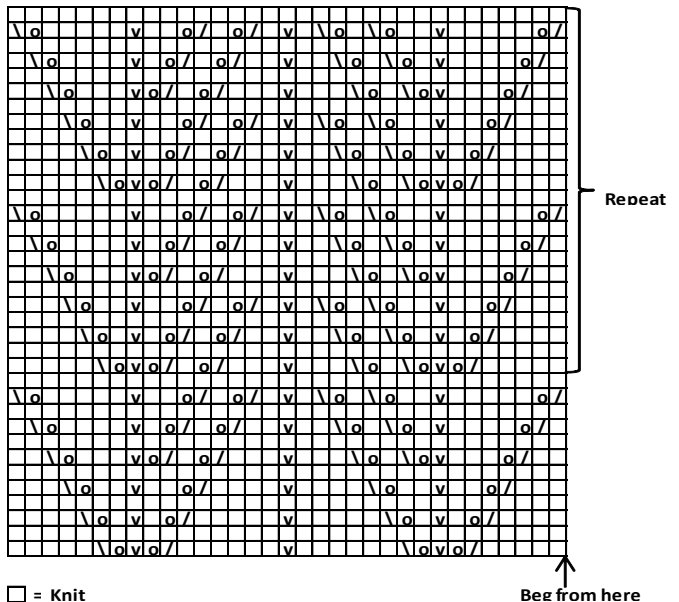
▨ = Sl 1 st, K1, pssso

Pattern C



■ = dec sts

Pattern D



□ = Knit

▤ = Purl

◻ = 1 yo

▧ = K2tog

▨ = Sl 1 st, K1, pssso

Viking Bjørk

Cardigan

1204-2

Size:	XS	S	M	L	XL	XXL
Bust:	85	90	95	102	110	118 cm
	33.5	35.4	37.4	40.2	43.3	46.4 in
Length:	58	60	60	62	62	63 cm
	22.8	23.6	23.6	24.4	24.4	24.8 in
Sleeve length:	48	49	50	51	51	52 cm
	18.9	19.3	19.7	20.1	20.1	20.5 in

ALTERNATIVE YARN: Viking Bjørk (90% cotton, 10% merino wool), Viking Alpaca Silk (50% alpaca, 50% silk), 50 g ball

Off-White, 502 12 12 13 14 15 16 balls

Circular needle and double pointed needles size 4 and 4 ½ mm – US 6 and 7 – UK/Canadian 8 and 7
+ zipper (measure the length from finished garment).

Gauge: 18 sts = approx. 10 cm (4 in) over St st with double yarn and needles size 4 ½ mm. **Check your gauge to ensure success.**

CARDIGAN

Using needles size 4 ½ mm and off-white double yarn, cast on 160-172-184-196-208-220 sts. Place markers each side, 80-86-92-98-104-110 sts for back, and 40-43-46-49-52-55 sts for each front. Cont working back and forth in St st and patt as foll: Beg from RS, work patt II over 12 sts – patt I over next 136-148-160-172-184-196 sts (end with lace patt over 4 sts) – patt II over 12 sts. Cont working as established until work measures approx. 6 cm (2.4 in). Cont working in cable patt same as before, and St st and lace patt over rem sts as foll: Beg from cable patt on right front, St st over 16-16-22-22-28-28 sts – lace patt same as before over next 8 sts – 4-7-4-7-4-7 sts in St st = right front. Back: St st over all sts. Left front: Same as right front, but in reverse. When work measures approx. 38-39-38-39-38-38 cm (15-15.4-15-15.4-15-15 in). Bind off 8-14-8-14-8-14 sts each side (4-7-4-7-4-7 sts both sides of the sidemarkers). Leave work aside, and knit the sleeves.

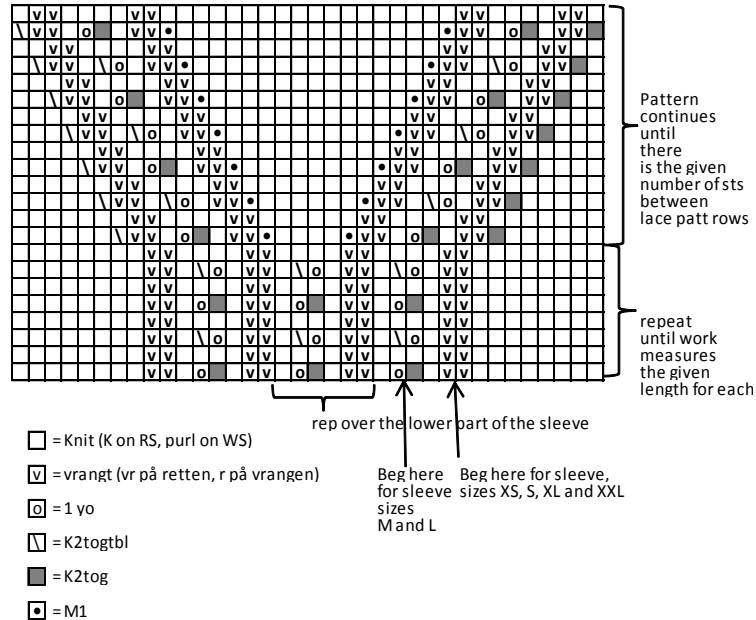
Sleeves

Using needles size 4 ½ mm and off-white double yarn, cast on 42-42-48-48-54-54 sts. Cont working in rnds. Work in lace patt same as for body, **but** beg from arrow as charted for patt III. When work measures approx. 6 cm (2.4 in) (place a marker beg of rnd = mid under arm). Cont working in St st over sts on each side of 20 mid sts (= worked in patt), **but** inc 1 st both sides of the marker. Rep inc approx. every 2 ½ cm (1 in) (same for all sizes) until work measures approx. 30-30-30-31-31-32 cm (11.8-11.8-11.8-12.2-12.2-12.6 in). Beg now working in patt as charted until there is 30-30-34-38-42-44 sts worked in St st between lace patt rows. Cont working as established until work measures 48-49-50-51-51-52 cm (18.9-19.3-19.7-20.1-20.1-20.5 in) (or desired length) = 72-76-80-82-86-90 sts on a rnd. Bind off 8-14-8-14-8-14 sts mid under arm (4-7-4-7-4-7 sts both sides of the marker). Leave work aside, and knit the other sleeve.

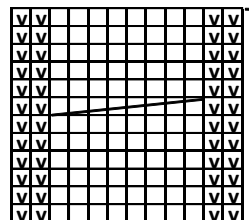
Yoke: Slip all sts on same circular needle = 272-268-312-304-348-344 sts. Cont working back and forth in patt same as before, **but** work raglan-dec every 2nd row as foll: **before** first lace patt (body) – lace patt – St st over 9-8-11-7-10-8 sts – lace patt over 8 sts – K2togtbl – St st until next lace patt, K2tog **before** patt – lace patt over 8 sts – St st over 9-8-11-7-10-8 sts – place a marker – K2tog (= beg of back) – St st over 68-68-80-80-92-92 sts – K2togtbl – place a marker – St st over 9-8-11-7-10-8 sts + lace patt – K2togtbl – work until next lace patt, and K2togtbl **before**

lace patt. Work until next lace patt, and K2togtbl **after** lace patt (= dec altog. 8 sts on a rnd). Rep dec until 2 St st rem between lace patt on each sleeve. Cont rep raglan-dec on **outer** sides of both lace patt on each sleeve (= K2tog before patt over 18 sts, and K2togtbl after patt over 18 sts). Rep dec until 112-122-136-144-148-160 sts rem. Knit 1 row over all sts, adjusting evenly across the row number of sts to be 102-110-126-134-138-150 sts. **Note!** Try to dec so that you can continue working in rib for neck edge. Change to needles size 4 mm, and cont working in K2,P2 rib. When neck edge measures approx. 4 cm (1.6 in), bind off. Sew on zipper.

PATTERN FOR SLEEVE



PATTERN II over 12 sts



= sl 4 sts on and hold to front. K4, knit sts from cn.

Viking Bjørk

Crochet shawl

1204-3

Size: Woman

ALTERNATIVE YARN: Viking Bjørk (90% cotton, 10% merino wool), Viking Alpaca Silk (50% alpaca, 50% silk), 50 g ball

Dark Violet, 569

7 balls

Crochet hook size 3 mm – US – UK/Canadian 11

Circular needle size 3 mm – US 2 or 3 – UK/Canadian 11

Gauge: 20 dc = approx. 10 cm (4 in) using hook size 3 mm.
Check your gauge to ensure success.

Abbreviations:

ch = chain stitch, **dc** = double crochet, **sl st** = slip stitch, **dc-clst** = 3 dc to same st

SHAWL

Using crochet hook size 3 mm, ch6. Join to ring with 1 sl st. Cont working back and forth.

1st row: Ch4, (= 1st dc), 2 dc + ch3 + 3 dc into ring. Turn.

2nd row: Ch4 + 2 dc to prev row's first st, ch1, [4 dc- ch3 - 4 dc] to prev row's 3 ch-sts = mid. Ch1, end with 3 dc to prev row's 4th ch-st. Turn.

3rd row: Ch4 + 2 dc to first dc, ch1 - 3 dc round prev row's ch-st - ch1 [4 dc + ch3 + 4 dc] round prev row's 3 ch-sts = mid. Ch1 - 3 dc round prev row's ch-st - ch1 - end with 3 dc to prev. row's 4th ch-st. Turn.

Cont working back and forth in the same way (inc 1 dc-clst each side of mid all the way until the end). When work measures approx. 65 cm (25.6 in) (or desired length), measured from mid, break yarn, and weave in all ends on WS.

Ruffled edge:

Beg from one corner, and knit or pick up approx. 326 sts (number of sts must be multiple by 3+2 sts) along slanting sides. Knit 1 row. Cont working as foll:

1st row: (= RS) K1 (= selvage st, knit every row), K1, * K1, P1, K1 r*, rep *-* across the row, end with K1 + 1 selvage st.

2nd row: (= WS) 1 selvage st, P1, *P1, 1 yo, K1, 1 yo, P1*, rep *-* across the row, end with P1 + 1 selvage st.

3rd row: (= RS) 1 selvage st + K1, *K1, 1 yo, P3, 1 yo, K1*, rep *-* across the row, end with K1 + 1 selvage st.

4th row: (= WS) 1 selvage st + P1, *P1, 1 yo, K5, 1 yo, P1*, rep *-* across the row, end with P1 + 1 selvage st.

Cont inc in every p-st panel (seen from RS) until edge measures approx. 4 cm (1.6 in). Bind off.

Viking Bjørk

Tunic and wristwarmers 1204-4

Size	XS	S	M	L	XL	XXL
Bust	85	90	95	102	110	118 cm
	33.5	35.4	37.4	40.2	43.3	in
Length	76	78	80	81	82	83 cm
	29.9	30.7	31.5	31.9	36.2	in

ALTERNATIVE YARN: Viking Bjørk (90 % cotton, 10% merino wool), Viking Alpaca Silk (50% alpaca, 50 % silk), 50 g ball

Tunic

Off-White, 502 balls	2	2	2	2	3	3
Orange, 551 balls	1	1	1	1	3	3
Beige, 507 balls	3	3	3	4	4	4
Dark Green, 536 balls	2	2	2	3	3	3

Wristwarmers

1 ball of each clr.

(use rest yarn from tunic, orange and off-white)

Circular needle and double pointed needles size 2 ½ and 3 mm – US 1 or 2 and 2 or 3 –UK/Canadian 13 or 12 and 11

+ 5 big buttons
 and 2 crystal buttons for wrist warmers

Gauge: 25 sts = approx. 10 cm (4 in) over St st using needles size 3 mm. **Check your gauge to ensure success.**

Seed stitch:

1st rnd: K1, P1

2nd rnd: Knit all p-sts, purl all k-sts.

Rep 2nd rnd.

TUNIC

Using needles size 3 mm and off-white yarn, cast one, 237-253-265-283-303-327 sts. Work in rnds 5 cm (2 in) in Seed st. Change to needles size 3 mm and green yarn. Place markers each side, 119-127-133-141-153-163 sts for front, and 118-126-132-142-150-164 sts for back. Cont working in St st with 6 cm (2.4 in) wide stripes (= approx 19 rnds), *dark green, beige, dark green, beige, orange, beige, off-white, beige *, rep *-* until the end.. **Same time** dec 1 st at each edge both sides of the markers approx. every 8-7-7 ½-7 ½-7 ½- 6 ½ cm (3.1-2.8-3-3-2.6 in) until 213-225-237-255-275-295 sts rem. When work measures 56-57-58-58-58-58 cm (22-22.4-22.8-22.8-22.8-22.8 in), measured from cast-on edge, bind off for armhole 12 sts each side 12 sts = 6 sts both sides of the markers. Finish back and front separately.

Back

Cont working in St st with stripes. Bind off at each edge every 2nd row 1x3, 1x2, and 1x1 st. When work measures the given length, and armhole measures 20-21-22-23-24-25 cm (7.9-8.3-8.7-9.1-9.4-9.8 in), bind off sts, or slip on holder.

Front

Work same as for back. When armhole measures approx. 5 cm (2 in), bind off mid st. Work each side separately = 41-44-47-51-57-61 sts for each side.

Right front

Cont working in St st and stripes. Bind off for V-neck as foll: K1 (= selvage st), K2tog. Rep dec every 2nd row until 19-21-23-25-27-29 sts rem. When front measures same as back, bind off sts, or slip on holder.

Left front

Work same as for right front, rev all shaping. (Note: Dec: Sl 1 st, K1, pss0).

Finishing

Join shoulder seams.

Armholes

Using needles size 2½ mm and off-white yarn, pick or knit up 124-128-134-140-144-150 sts. Work in rnds in K1,P1 rib. When work measures 8 cm (3.1 in), bind off rather loosely. Fold edge in double on RS, and fasten with few sts on shoulder and mid under arm.

Collar

Using needles size 2½ mm and off-white yarn, pick or knit up from **WS** along neck edge approx. 120-126-134-140-148-152 sts. Place markers on both shoulders and mid back. Work back and forth in Seed st. Inc 1 st both sides of the markers (= 6 sts). Rep inc every 2nd row until collar measures approx. 6 cm (2.4 in), or as desired. Bind off rather loosely.

Weave in all ends on WS.

Mock buttonhole band

Using needles size 2½ mm and beige yarn, cast on 15 sts. Work back and forth in St st until buttonhole band reaches from beg of striping until V-neck. Bind off.

Sew buttonhole band mid front.

Sew on buttons evenly spaced apart.

WRISTWARMERS

Size one size

Using needles size 2½ mm and dark green yarn, cast on 48 sts. Work in rnds 8 cm (3.1 in) in K2,P2 rib. Change to needles size 3 mm and beige yarn. Work 3 cm (1.2 in) in St st. Place markers each side, 24 sts for each side. Work for thumb gusset: K3, M1, K1, M1. Rep inc both sides of the gusset every 3rd rnd until there is 13 sts for the gusset. Slip 13 gusset sts on holder, cast on 1 st. Cont working in rnds in St st until work measures approx. 20 cm (7.9 in).

Index finger: Slip 6 sts from upper side and 6 sts from palm side on dpn size 3 mm, and cast on 4 sts between index and middle finger = 16 sts. Work in rnds in St st until work measures approx. 4 cm (1.6 in). Bind off.

Middle finger: Slip next 6 sts from both sides on needles, and pick up 3 sts from index finger and cast on 2 sts between middle and ring finger = 17 sts. Work in rnds approx. 5 cm (2 in) in St st. Bind off.

Ring finger: Slip next 6 sts from both sides on needles, pick up 2 sts from middle finger and cast on 3 sts between ring and little finger = 17 sts. Work in rnds approx. 4 cm (1.6 in) in St st. Bind off.

Little finger: Slip last 6 sts from both sides on needles, pick up 3 sts from ring finger = 15 sts. Work in rnds approx. 3½ cm (1.4 in) in St st. Bind off.

Thumb: Slip 13 sts from holder on needles, pick 5 sts from back of the thumb (2 sts both sides of the mid st) = 18 sts. Work in rnds in St st until work measures approx. 2 cm (0.8 in). Bind off. Weave in all ends on WS.

Work same for the other wristwarmer, with thumb on the opposite side.

CROCHET ROSETTE

ABBREVIATIONS:

ch = chain stitch, sc = single crochet, sl st = slip stitch, hdc = half double crochet, dc = double crochet, tr = treble, ch-space = chain space

Center (= 1st rnd): Off-White

Make a fingerlock, 6 sc into ring. Tighten the ring by pulling the threads. End rnd with 1 sl st to 1st sc.

2nd rnd: Ch1, 1 sc, ch3, *1 sc to next sc, ch3*, rep *-* 5 times, end with 1 sl st to 1st ch-st = 6 ch-spaces.

First petal rnd:

3rd rnd: *Ch1 +1 sc + 3 hdc+1 sc to 3ch-space, take out hook, insert it from back into same 3ch-space, insert hook into the loop, and draw through, take out hook, and insert from front into next 3ch-space, insert hook into the loop, and draw through*, rep *-* 6 times, last one worked from front.

4th rnd: Ch1, worked behind first petal rnd, insert hook from back, 1 sc round 1st sc on 2nd rnd, ch3, *1 sc round next sc on 2nd rnd, ch3*, rep *-* 5 times, 1 sl st to 1st sc. Break yarn, and draw through the loop.

2nd rnd of petals (dark green)

Fasten yarn to one 3ch-space.

5th rnd: *Ch1 +1 sc +1 hdc + 3 dc + 1 hdc + 1 sc to 3ch-space, take out hook, insert it from back into same 3ch-space, insert hook into loop, and draw through, take out hook, and insert from front into next3ch-space, insert hook into the loop, and draw through*, rep *-* 6 times, last one worked from front.

6th rnd: Ch1, worked behind petals, insert hook from back, 1 sc round 1st sc on 4th rnd, ch4, *1 sc round next sc on 4th rnd, ch4*, rep *-* 5 times, 1 sl st to 1st sc. Break yarn, and draw through the

loop.

3rd rnd of petals (beige)

Fasten yarn to one 4ch-space.

7th rnd: *Ch1+ 1 sc+ 1 hdc+ 1 dc + 3 tr +1dc + 1 hdc + 1 sc to 4ch-space, take out hook, insert it from back into same 4ch-space, insert hook into loop, and draw through, take out hook, and insert from front into next 4ch-space, insert hook into the loop, and draw through*, rep *-* 6 times, last one worked from front.

8th rnd: Ch1, worked behind petals, insert hook from back, 1 sc round 1st sc on 6th rnd, ch5, *1 sc round next sc on 6th rnd, ch5*, rep *-* 5 times, 1 sl st to 1st sc. Break yarn, and draw through the loop.

4th rnd of petals (Orange)

Fasten yarn to one 5ch-space

Last rnd: *Ch1 + 1 sc + 1 hdc + 1 dc + 5 tr + 1 dc + 1 hdc + 1 sc to 5ch-space, take out hook, insert it from back into same 5ch-space, insert hook into loop, and draw through, take out hook, and insert from front into next 5ch-space, insert hook into loop, and draw through*, rep *-* 6 times, last one worked from front. Break yarn, and draw through the loop.

Weave in all ends on WS.

Sew rosette on top of the wristwarmer, with a crystal pearl in the middle.

Viking Bjørk

Dress

1204-5

Size:	S	M	L
Bust, approx.	88	96	104 cm
	34.6	38.8	41 in
Waist, approx.	79	84	94 cm
	31.1	33.1	37 in
Hips, approx.	92	98	106 cm
	36.2	38.6	41.8 in
Length, approx.	96	100	100 cm
	38.8	39.4	39.4 in

ALTERNATIVE YARNS: Viking Bjørk (90% cotton, 10% merino wool), Viking Alpaca Silk (50% alpaca, 50% silk), 50 g ball

Beige, 507 9 10 11 ball

Circular needle and double pointed needles size 2½ and 3 mm – US 1 or 2 and 2 or 3 – UK/Canadian 13 or 12 and 11

Gauge: 25 sts = approx. 10 cm (4 in) over St st using needles size 3 mm. **Check your gauge to ensure success.**

Pattern A:

First rnd: K1, *sl 1 st, K1, pssso, K2tog, K6, 1 yo, K1, 1 yo, K6*, rep *-* across the rnd, end with K5, K2tog.

Second rnd: Purl.

DRESS

Using needles size 3 mm, cast on 289 – 306 – 323 sts. Work 2 rnds in Garter st. Cont working in patt A, rep 4 times. Knit 1 rnd, and dec evenly across the rnd 17 – 18 – 19 sts (= 1 st in each panel) = 272 – 288 – 304 sts on a rnd. Work patt B. When patt B is ready, cont working in St st. Dec evenly across the rnd 10 – 11 – 10 sts every 4 cm (in) 4 times = 232 – 244 – 264 sts on a rnd.

When work measures 33 – 35 – 35 cm (13-13.8-13.8 in), leave work aside, and knit the other layer..

Layer: Using needles size 3 mm, cast on 306 – 323 – 340 sts. Work 2 rnds in Garter st. Cont working in patt A, rep 4 times. Knit 1 rnd, and dec evenly across the rnd 18 – 19 – 20 sts (=1 st in each panel) = 288 – 304 – 320 sts on a rnd. Work patt B. After patt B, work in St st, adjusting evenly over 1st rnd number of sts to be 232 – 244 – 264 sts.

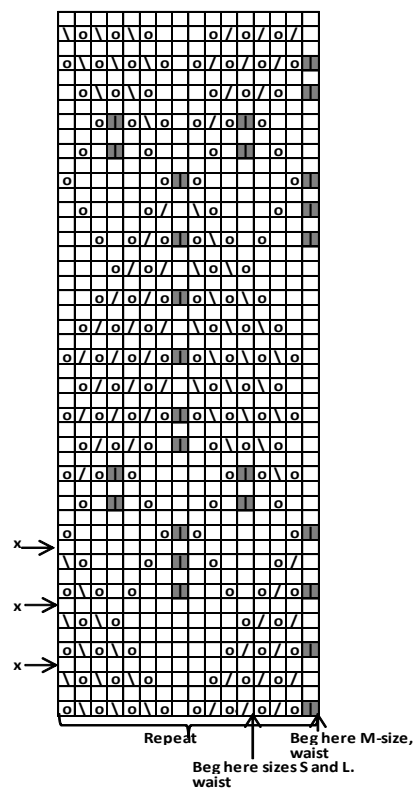
Join pieces together. Knit sts tog one by one (= 1st from hem, and 1 st from layer). Cont working in rnds in St st. Dec evenly across the rnd 8 – 7 – 8 sts. Rep dec approx. every 6 cm (2.4 in) until 208 – 223 – 240 sts rem, and work measures approx. 58 – 60 – 60 cm (22.8-23.6-23.6 in). Size M: Inc 1 st = 224 sts. Place markers each side 105 – 113 – 121 sts for front, and 103 – 111 – 119 sts for back.

Work patt B. Change to needles size 2 ½ mm, and work 6 rnds in Garter st. Bind of 103 – 111 – 119 sts for back.

Front: Cont working back and forth. 1st row, inc for bust: K19 – 20 – 20, inc 9 – 10 – 11 sts evenly across next 24 – 27 – 30 sts, K19 – 19 – 21, inc 9 – 10 – 11 sts evenly across next 24 – 27 – 30 sts, and end K19 – 20 – 20. Cont working in St st. Dec 1 st at each edge inside 1 selvage st on every RS row: K1 (= selvage st, knit every row). sl 1 st, K1, pssso, knit until 3 sts rem, K2tog + 1 selvage st. When work measures 7 – 8 – 9 cm (2.8-3.1-3.5 in), bind off mid st. Finish each side separately. Rep dec at each edge until 19 sts rem. Work in patt C = shoulder straps. When shoulder strap measures approx. 26 – 28 – 30 cm (10.2-11-11.8 in), bind off. Work same for the other side.

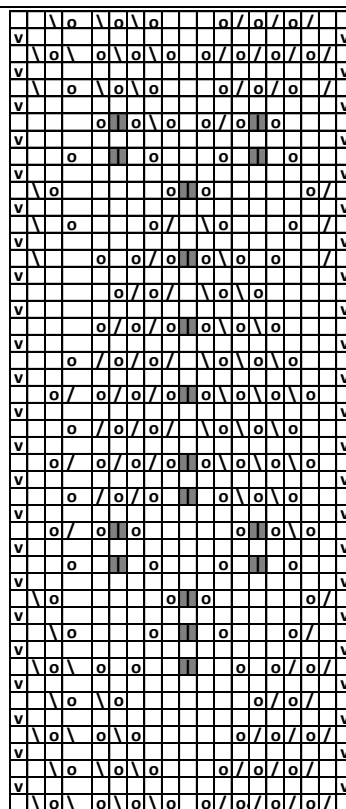
Sew shoulder straps to the back, approx. 10 cm (4 in) between straps. Sew on WS an elastic with cross sts across Garter st rnds under bust. Weave in all ends on WS.

Pattern B



- = knit
- ▣ = sl 1 st, K2tog, pssso
- ▤ = K2tog
- ▥ = sl 1 st, K1, pssso
- ▦ = 1 yo

x = last st on the rnd is part of the beg next rnd



- = knit
- ▣ = sl 1, K2tog, pssso
- ▤ = K2tog
- ▥ = sl 1 st, K1, pssso
- ▦ = purl on RS, knit on WS
- ▧ = 1 yo

Viking Bjørk

Cardigan with crochet edge

1204-6

Size	XS	S	M	L	XL
Bust, approx.	90	96	102	108	114 cm
	35.4	38.8	40.2	42.5	in
Length, approx.	58	59	60	61	62 cm
	22.8	23.2	23.6	24	in
Sleeve length, approx.	47	48	49	50	51 cm
	18.5	18.9	19.3	19.7	in

ALTERNATIVE YARN: Viking Bjørk (90 % cotton, 10% merino wool), Viking Alpaca Silk (50% alpaca, 50 % silk), 50 g ball

Dark Red, 562	9	9	10	10	11 balls
Red, 550	1	1	1	1	1 ball
Orange, 551	1	1	1	1	1 ball

Circular needle size 3 mm – US 2 or 3 – UK/Canadian 11
 Double pointed needles size 2 ½ and 3 mm – US 1 or 2 and 2 or 3 – UK/Canadian 13 or 12 and 11

Crochet hook size 2 ½ mm – US B/1 or C/2 – UK/Canadian 12 + 6 buttons

Gauge: 25 sts = approx. 10 cm (4 in) over St st using needles size 3 mm.

Gauge: 25 sc = approx. 10 cm (4 in) using crochet hook 2 ½ mm.

Check your gauge to ensure success.

ABBREVIATIONS:

ch = chain stitch, **sc** = single crochet, **sl st** = slip stitch, **dc** = double crochet, **ch-space** = chain space
picot = ch3, **1 dc to 1st ch-st**, **skip 1 st**, **1 sc to next st**.

GRANNY SQUARE

Beg with orange yarn, ch5, join into ring with 1sl st.

1st row (RS) : Ch3 + 2 dc into ring, *ch3 + 3 dc into ring*, rep *-* altog. 3 times, ch3, end with 1 sl st to 3rd ch-st.

2nd row: Change to red yarn, cont from RS: Ch4, *3 dc + ch3 + 3 dc into ch-space, ch1), rep *-* altog. 3 times, 3 dc + ch3 + 2 dc into last ch-space, end with 1sl st to 3rd ch-st.

3rd row: Change to dark red, cont from RS: Ch3, 2 dc into ch-space, ch1, *3 dc + ch3 + 3 dc into corner, ch1, 3 dc into ch-space, ch1*, rep *-* altog. 3 times, 3 dc + ch3 + 3 dc into corner, ch1, end with 1sl st to 3rd ch-st.

Weave in all ends on WS.

Crochet altog. 15-16-17-18-19 squares.

Sew or crochet squares tog. using dark red yarn. Squares joined tog. measure approx. 90-96-102-108-114 cm (35.4-38.8-40.2-42.5-44.9 in).

Crochet an edge using dark red yarn = 226-241-256-271-286 sts (= 15 sc per square + 1 sc)

Pick or knit up from RS 1 st from each sc. Place markers each side, 112-121-128-135-142 sts for back, and 57-60-64-68-72 sts for each front. Cont working back and forth in St st. When work measures 35 cm (13.8 in), bind off 8 sts each side = 4 sts both sides of the markers. Finish back and fronts separately.

Back

Cont working back and forth in St st. Bind off at each edge every 2nd row 1x2 sts, and 1x1 st = 98-107-114-121-128 sts. When work measures the given length, and armhole measures approx. 23-24-25-26-27 cm 89.1-9.4-9.8-10.2-10.6 in). Bind off, or slip sts on holder.

Right front

Work same as for back. When work measures 52-53-54-55-56 cm (20.5-20.9-21.3-21.7-22 in), bind off at neck edge 20-22-23-24-25 sts. Bind off at neck edge every 2nd row 1x3, 1x2, and 1x1 st. When work measures same as back, bind off, or slip sts on holder.

Work same for left front, rev all shaping.

Sleeves

Using needles size 2½ mm and dark red yarn, cast on 56-56-58-58-60 sts. Work in rnds in 5 cm (2 in) in St st. Knit 1 rnd, adjusting evenly across the rnd number of sts to be 74-78-82-86-90 sts. Change to needles size 3 mm. Place a marker mid under arm = beg of rnd. Cont working in rnds in St st. Inc 1 st beg and end of rnd approx. every 2 cm (0.8 in), until you have altog. 116-120-126-130-136 sts on a rnd. When sleeve measures 47-48-49-50-51 cm (18.5-18.9-19.3-19.7-20.2 in) (or desired length), bind off 8 sts mid under arm = 4 sts both sides of the marker. Cont working back and forth in St st. Bind off beg of each row 1x2, and 1x1 st. Bind off rem sts.

Work same for the other sleeve.

Finishing

Join shoulder seams.

Crochet edge around the cardigan

Beg from upper edge of right front (WS). Using dark red yarn, work sc across right front edge (Note: skip approx. every 3rd st). Cont working along lower edge, and left front edge. Turn, and work picot edge, ending with 1 sl st to 1st sc. Break yarn, and draw through the loop, weave in on WS.

Work same for the sleeves. (Note: 1st row is worked from WS). Sew on sleeves.

Place markers for 6 buttons evenly spaced apart along left edge. Sew buttons approx. 1 cm (0.4 in) inside the front edge.

Crochet buttonhole loops on right front edge. Using dark red yarn, work as foll: Fasten yarn with 1 sl st between 2 picots, ch11, fasten with 1 sc into same st as sl st. Break yarn, and draw through the loop. Weave in ends on WS:

Collar

Crochet approx. 14-14-14-14-15-15 granny squares. Sew or crochet squares tog.

Using dark red yarn, crochet 1 row sc from WS along one long side of the collar, skip every 3rd = 140-140-140-140-150-150 sts. Work 1 row sc around neck edge.

Sew or crochet collar with sl sts along neck edge.

Crochet edge around collar, same as for cardigan.

Weave in all ends on WS.

Viking Bjørk

Vest

1204-7

Size:	XS	S/M	L/XL	XXL
Bust, approx:	83	96	105	118 cm
	32.7	38.8	41.4	46.4 in
Length, approx:	60	62	62	63 cm
	23.6	24.4	24.4	24.8 in

ALTERNATIVE YARN: Viking Bjørk (90% cotton, 10% merino wool), Viking Alpaca Silk (50% alpaca, 50% silk), 50 g ball

Orange, 551 6 6 7 8 balls

Circular needle and double pointed needles size 3 mm – US 2 or 3 – UK/Canadian 11

+ 7 buttons

Gauge: 25 sts = approx. 10 cm (4 in) over St st using needles size 3 mm. **Check your gauge to ensure success.**

Back:

Using needles size 3 mm, cast on 103-119-131-147 sts. Work 12 rows in Garter st. Cont working back and forth in patt as foll: Garter st over 6-14-20-12 sts – patt as charted, rep 5-5-5-7 times (+ 11 sts as charted) – end with Garter st over med 6-14-20-12 sts. Cont working back and forth as established until work measures the given length. Bind off.

Right front:

Using needles size 3, cast on 56-64-70-78 sts. Work 12 rows in Garter st. Cont working back and forth in patt as foll: Beg from RS, Garter st over 7 sts (= front edge) – patt as charted, rep 2-2-2-3 times (+ 11 sts as charted) – end with Garter st over 6-14-20-12 sts (= side). Cont working back and forth until work measures approx. 51-52-52-53 cm (20.1-20.5-20.5-20.9 in). Bind off at neck edge 16-18-18-20 sts beg of row. Bind off at neck edge every 2nd rnd 1x3, 1x2, and 1x1 st. When work measures same as back, bind off sts.

Work same for left front, rev all shaping. Make buttonholes: When work measures approx. 4-5-5-5 cm (1.6-22-2-2 in) make first buttonhole. Buttonhole: Bind off 3 sts inside 2 sts. Next row: Cast on 3 sts over the bound-off sts. Make rest of the

buttonholes approx. 8 cm (3.1 in) spaced apart (altog. 6 buttonholes). Last buttonhole (7th buttonhole) will be mid neck band.

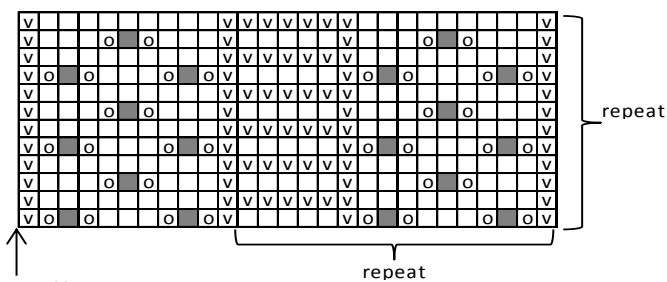
Finishing

Sew shoulder seams.

Sew sideseams, leaving approx. 12 cm (4.7 in) slits each side, and 25-26-27-28 cm (9.8-10.2-10.6-11 in) for armholes.

Neck band: Using needles size 3 mm, pick or knit up approx. 124-128-132-136 sts. Work back and forth 8 rows in Garter st. (Note! Remember buttonhole). Bind off.

Weave in all ends on WS.



end here

□ = knit (knit on RS, purl on WS)

▣ = purl (purl on RS, knit on WS)

○ = 1 yo

▤ = sl 1 st, K2tog, pss0

Viking Bjørk

Cardigan

1204-8

Size:	XS	S	M	L	XL	XXL
Bust:	85	90	95	102	110	118
cm	33.5	35.4	37.4	40.2	43.3	46.4
in	58	60	60	62	62	63
cm	22.8	23.6	23.6	24.4	24.4	24.8
in	50	51	52	53	53	54
cm	19.7	20.1	20.5	20.9	20.9	21.3

ALTERNATIVE YARN: Viking Bjørk (90% cotton, 10% merino wool), Viking Alpaca Silk (50% alpaca, 50% silk), 50 g ball

Light Grey, 513	7	7	8	9	9	10 balls
Violet, 569	1	1	1	1	1	1 ball
Orange, 551	1	1	1	1	1	1 ball
Green, 536	1	1	1	1	1	1 ball
Yellow, 545	1	1	1	1	1	1 ball
Pink, 563	1	1	1	1	1	1 ball

Circular needle and double pointed needles size 3 mm – US 2 or 3 – UK/Canadian 11

+ 6-6-6-7-7-7 buttons

Gauge: 25 sts = approx. 10 cm (4 in) over St st using needles size 3 mm. **Check your gauge to ensure success.**

STRIPES:

Violet – orange – green – yellow – pink, rep *-*

CARDIGAN

Using needles size 3 mm and light grey yarn, cast on 222-231-246-261-282-303 sts. Work 4 rows in Garter st. Cont working in patt as foll:

Note! Stripes are worked with 1 clr at a time.

1st row (RS): Worked in violet, sl 1 st, *K1, sl next 2 sts*, rep *-* across the row, sl last st.

2nd row (WS): Worked in violet, sl 1 st, *K1, sltbl next 2 sts with yarn in front*, rep *-* across the row, sl last st.

3rd row: Worked in light grey, knit but ktbl all prev row's grey sts..

4th – 8th row Worked in Garter st with light grey yarn.

Rep 1st-8th rows with stripes until the end. Place markers each side, 112-117-124-131-142-153 sts for back, and 55-57-61-65-70-75 sts for each front. Dec 1st both sides of the markers, before marker: K2togtbl, after marker: K2tog. Rep dec every 8th – 8th – 10th – 10th – 10th – 12th row altog. 11-11-9-10-9-8 times = 178-187-210-221-246-271 sts on a row. When work measures approx. 33-34-33-34-34-34 cm (13-13.4-13-13.4-13.4-13.4 in), inc 2 sts each side every 2nd row altog. 8-9-7-9-8-6 times (=210-223-238-257-278-295 sts). When work measures approx. 38-39-38-39-39-39 cm (15-15.4-15-15.4-15.4-15.4 in), bind off 12 sts each side (6 sts both sides of the markers). Leave work aside, and knit sleeves.

Sleeves

Using needles size 3 mm and light grey yarn 52-54-56-58-60-62 sts. Work 2 rows in Garter st. Cont working back and forth same as for body. Inc 1 st at each edge approx. every 3-3-2 ½ -2 ½ -2 ½ -2 cm (1.2-1.2-1-1-1-0.8 in) until you have altog. 80-84-90-94-100-104 sts on a row. When sleeve measures the given length, or as desired (Note! End with same row as body), bind off 6 sts each edge. Sl sts on holder.

Work same for the other sleeve.

Yoke: Slip all sts on same circular needle (sleeves over the bound-off sts t each side) = 322-343-370-397-430-455 sts.

Adjust the number of sts to be 321-342-369-396-429-453 sts.

Cont working back and forth. Place markers at each 4 seamline (between 2 sts). Dec 2 sts at each seamline as foll: work until 2 sts rem before a marker, K2togtbl, K2tog. Rep dec at each 4 seamline every 2nd row altog. 28-30-32-35-38-40 times = 97-102-113-116-125-133 sts on a row. Work 3 cm (1.2 in) in Garter st with light grey yarn without raglan-dec (= neck band). Bind off rather loosely.

Sew underarm seams, and sleeve seams.

Left front edge: Beg from RS, using needles size 3 mm and light grey yarn, pick or knit up along left front edge approx. 134-140-140-144-144-148 sts. Work 6 rows in Garter st. Bind off knitwise on WS row. Place markers for altog. 6-6-6-7-7-7 buttons, one approx. 2 cm (0.8 in) from lower edge, one mid neck band, and rest evenly spaced apart.

Right front edge: Work same as for left front, but make buttonholes on 3rd row. Buttonhole: Bind off 3 sts. Next row: Cast on 3 sts over the bound-off sts. Weave in all ends on WS.

Sew on buttons.

Viking Bjørk

Cardigan

1204-9

Size:	XS	S	M	L	XL
Bust, approx:	92	96	103	111	118 cm
	36.2	38.8	40.6	43.7	46.4 in
Length, approx:	60	60	62	62	63 cm
	23.6	23.6	24.4	24.4	24.8 in
Sleeve length:	38	40	40	41	41 cm
	15	15.7	15.7	16.1	16.1 in

ALTERNATIVE YARN: Viking Bjørk (90% cotton, 10% merino wool, Viking Alpaca Silk (50% alpaca, 50% silk), 50 g ball

Beige, 507 10 11 11 12 13 balls

Circular needle and double pointed needles size 3 mm – US 2 or 3 – UK/Canadian 11

+ 11 toggles

Gauge: 25 sts = 10 cm (4 in) over St st using needles size 3 mm.

Gauge, pattern: 34-35 sts = approx. 10 cm (4 in) over patt using needles size 3 mm.

Check your gauge to ensure success.

CARDIGAN

Using needles size 3 mm and beige yarn, cast on 230-240-258-278-296 sts. Work back and forth 3 cm (1.2 in) in Garter st. Inc evenly across last row number of sts to be 322-335-361-387-413 sts. Cont working back and forth in patt as charted. Place markers each side, 166-171-185-197-211 sts for back, and 78-82-88-95-101 sts for front. When work measures approx. 39-38-39-38-38 cm (15.4-15-15.4-15-15 in), bind off 16 sts each side (8 sts both sides of the markers). Finish back and front separately.

Back

Cont working back and forth in patt. Bind off at each edge beg of each row 1x3, 1x2, and 1x1 st. Cont working until work measures 60-60-62-62-63 cm (23.6-23.6-24.4-24.4-24.8 in), and armhole measures approx. 21-22-23-24-25 cm (8.3-8.7-9.1-9.4-9.8 in). Adjust evenly across last row number of sts to be 100-103-113-121-131 sts. Bind off.

Right front

Work same as for back. Cont working until work measures approx. 50-50-52-52-53 cm (19.7-19.7-20.5-20.5-20.9 in). Bind off at neck edge 22-26-26-28-28 sts. Bind off at neck edge every 2nd row 1x4, 1x3, 1x2, and 1x1 st = 32-32-38-43-49 sts rem. When work measures same as back, adjust evenly across last row number of sts to be 24-24-28-31-35 sts. Bind off.

Work same for left front, rev all shaping.

Sleeves

Using needles size 3 mm and beige yarn, cast on 116-124-124-128-128 sts. Work back and forth in Garter st. When work measures approx. 2 cm (0.8 in), make a buttonhole at left edge, inside 3 sts (for the other sleeve at right edge). Buttonhole: Bind off 3 sts. Next row: Cast on 3 sts over the bound-off sts. Cont working in Garter st. When work measures approx. 5 cm (2 in), make another buttonhole. When work measures 7 cm (2.8 in), bind off first 12 sts, (for the other sleeve last 12 sts). Knit 1 row, adjusting evenly the row number of sts to be 120-128-128-132-132 sts. Place a marker mid under arm, 26-28-28-30-30 sts

before split on **left sleeve**, and 26-28-28-30-30 sts **after** split on **right sleeve**. Cont working in rnds in patt as charted (check from mid where to beg patt). Inc 1 st both sides of the marker approx. every 2 -2 ½ -2-2-1 ½ cm (0.8-1-0.8-0.8-0.6 in) until you have altog. 146-154-160-168-174 sts on a rnd. When work measures the given length, or as desired, bind off 16 sts mid under arm (8 sts both sides of the marker). Cont working back and forth in patt. bind off beg of each row 1x3, 1x2, and 1x1 st. Next row:

dec evenly across the row number of sts to be 84-90-94-100-104 sts. Bind off.

Work same for the other sleeve but in reverse.

Finishing

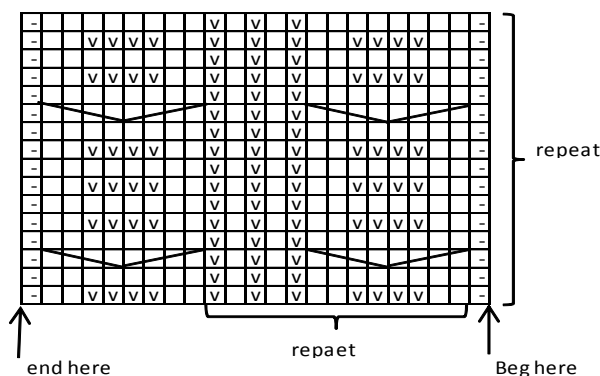
Join shoulder seams.

Neck band: Using needles size 3 mm and beige yarn, pick or knit up around neck edge 139-143-147-149-151 sts. Work back and forth approx. 2½ cm (1 in) in Garter st. Bind off

Left front edge: Using needles size 3 mm and beige yarn, pick or knit up 130-132-136-136-138 sts. Work back and forth 2 ½ cm (1 in) in Garter st. Bind off. Place markers for 7 buttons, one approx. mid Garter st edge, one mid neck edge, and rest evenly spaced apart.

Work same for right front edge, but make buttonholes after 1 cm (0.4 in). Buttonhole: Bind off 3 sts. Next row: Cast on 3 sts over the bound-off sts.

Weave in all ends on WS. Sew on sleeves. Sew on buttons on left front and both sleeves.



□ = knit (knit on RS, purl on WS)

▣ = vrangt (vr på retten, r på vrangen)

▤ = selvage st (knit on every row)

▥ = sl 2 sts on cn, and hold to back, K2, knit sts from cn.

▦ = sl 2 sts on cn, and hold to front, K2, knit sts from cn.

Viking Bjørk

Tunic

1204-10

Size	XS	S	M	L	XL	XXL
Bust	85	90	95	102	110	118 cm
	33.5	35.4	37.4	40.2	43.3	46.4 in
Length	72	74	76	78	80	82 cm
	28.3	29.1	29.9	30.7	31.5	32.3 in

ALTERNATIVE YARN: Viking Bjørk (90% cotton, 10% merino wool), Viking Alpaca Silk (50% alpaca, 50% silk), 50 g ball

White, 500 7 7 7 8 8 8 balls

Beige, 507 1 1 1 1 1 1 ball

Short and long circular needle size 3 mm – US 2 or 3 – UK/Canadian 11 + pearls

Gauge: 25 sts = approx. 10 cm (4 in) over St st using needles size 3 mm. **Check your gauge to ensure success.**

TUNIC

Using needles size 3 mm and beige yarn, cast on 264-264-288-312-336-360 sts. Work 3 rnds in St st. Next rnd, eyelet rnd (= folding edge): *K2tog, 1 yo*, rep *-* across the rnd. Change to white yarn. Work 4 rnds in St st. Place markers each side, 132-

132-144-156-168-180 sts for both back and front. Work patt I as chart. Work 5 rnds in St st with white yarn. Work 1 eyelet rnd for flowers (embroidered later on): *K10, K2tog, 1 yo*, rep *-* across the rnd. Work 6 rnds in St st. Work in patt II as charted, rep 4-4-4-5-5-5 times = 8-8-8-10-10-10 rows pricks. Cont working in St st with white yarn. Dec 1st at each side both sides of the markers, before a marker: K2togtbl, after the marker: K2tog = 4 sts on a rnd. Rep dec every 2 ½ - 3 - 2 ½ - 2 ½ - 2 ½ cm (1-1.211-1-1in) until 212-228-236-256-276-296 sts rem. When work measures 56-57-58-59-60-61 cm (22-22.4-22.8-23.2-23.624 in), measured from folding edge (or desired length for the armhole), bind off for armholes 12 sts each side = 6 sts both sides of the markers. Next rnd: Cast on 76-78-84-89-94-99 sts over the bound-off armhole sts = 340-360-380-410-440-470 sts on a rnd. Cont working in rnds in St st, and dec every 8th -9th -9th -10th -10th -11th rnd as foll: *K8, K2tog*, rep across the rnd Next dec: *K7, K2tog*, rep *-* across the rnd. Cont dec in the same way with 1 st less between each dec, rep altog. 6 times. When work measures 72-74-76-78-80-82 cm (28.3-29.1-29.9-30.7-31.5-32.3 in), dec evenly across the rnd number of sts to be 116-120- 126-130-136-140 sts. Place new markers both sides of the neck edge, 58-60-63-65-68-70 sts for both sides. Work for neck edge as foll: Work 4 rnds in St st, and dec 1 st both sides of the markers on 2nd and 4th rnds. Change to beige yarn, and work an eyelet rnd as foll: *K2tog, 1 yo*, rep *-* across the rnd. Work 4 rnds in St st, and inc 1 st both sides of the markers on 2nd and 4th rnds. Bind off rather loosely.

Weave in all ends on WS.

Fold neck edge and hem in double, and sew on WS.

Sleeves

Using needles size 3 mm and white yarn, pick or knit up approx.86-88-94-104-108 sts around armhole. Work 4 cm (1.6 in) in rnds in St st. Change to beige yarn, and knit an eyelet rnd same as for lower edge of the body. Bind off rather loosely.

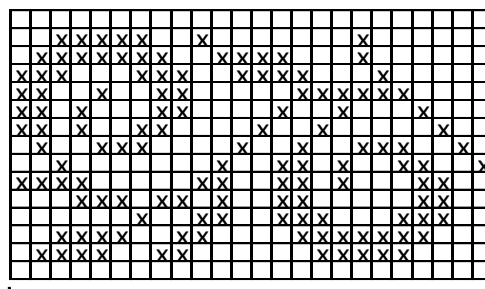
Weave in all ends on WS.

Fold edge in double, and sew on WS.

Embroider 6 Lazy Daisy sts around each hole between patt I and II forming a flower. Sew a pearl mid each flower.

Embroider 2 rnds of flowers evenly spaced apart across the yoke, (Note! Place markers on the sides since there aren't any holes for the flowers on the yoke).Sew a pearl mid each flower. Using white yarn, sew a zic-zac row between pricks on patt II so that it creates a grid, see photo!

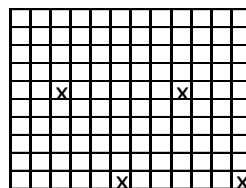
PATTERN I



□ = white
 ☒ = beige

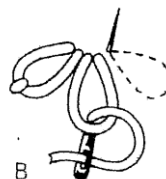
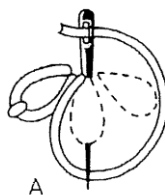
↑ beg here

PATTERN II



Lazy Daisy Stitch:

3 or more chain stitches worked in a circle to form a flower



Mille-Fleur-sting
 Tre eller flere kjedesting syes
 fra samme punkt.
 slik at det dannes en blomst.

Viking Bjørk

Sweater

1204-11

Size:	XS	S	M	L	XL	XXL
Bust, approx:	90	95	100	105	110	115 cm
	35.4	37.4	39.4	41.4	43.3	45.3 in
Length, approx:	58	60	60	62	62	63 cm
	22.8	23.6	23.6	24.4	24.4	24.8 in
Sleeve length, approx:	48	49	50	51	51	52 cm
	18.9	19.3	19.7	20.1	20.1	20.5 in

ALTERNATIVE YARN: Viking Bjørk (90% cotton, 10% merino wool), Viking Alpaca Silk (50% alpaca, 50% silk), 50 g ball

JAKKE

Off-white, 502	7	8	8	9	10	11 balls
Beige, 507	1	1	1	1	1	1 ball
Grey, 515	1	1	1	1	1	1 ball
Dark Red, 562	1	1	1	1	1	1 ball

Circular needle and double pointed needles size 2½ and 3 mm – US 1 or 2 and 2 or 3 – UK/Canadian 13 or 12 and 11

Crochet hook 3 mm – US C/2 or D/3 – UK/Canadian 11
+ red and silver sequins for embellishing patt border

Gauge: 25 sts = approx. 10 cm (4 in) over St st using needles size 3 mm. **Check your gauge to ensure success.**

SWEATER

Using needles size 3 mm and off-white yarn, cast on 248-260-272-284-296-312 sts. Work 4 cm (1.6 in) in rnds in K2,P2 rib. Place markers each side, 125-131-137-143-149-157 sts for front, and 123-129-135-141-147-155 sts for back. Cont working in St st. Dec 1 st at each side both sides of the markers. Rep dec approx. every 6 cm (2.4 in) altog. 5-5-5-5-6 times = 228-240-252-264-276-288 sts on a rnd. Cont working until work measures approx. 39-40-40-40-40-40 cm (15.4-15.7-15.7-15.7-15.7-15.7 in). Work patt I as charted (beg from arrow pointing out the correct size). Bind off 16 sts each side (8 sts both sides of the markers). Leave work aside, and knit the sleeves.

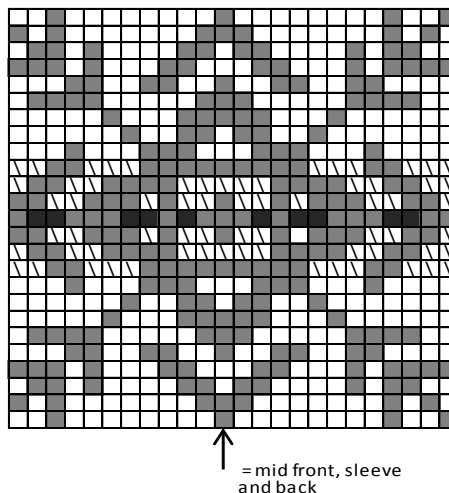
Sleeves

Using needles size 3 mm and off-white yarn, cast on 48-52-52-56-56-60 sts. Work 4 cm (1.6 in) in rnds in K2,P2 rib. Inc 1 st, and cont working in rnds in St st. Place a marker mid under arm. Inc 1 st both sides of the marker. Rep inc approx. every 2 ½ cm (1 in) (same for all sizes) until you have altog. 81-85-87-91-95-99 sts on a rnd. When work measures 43-44-45-46-46-47 cm (16.9-17.3-17.7-18.1-18.1-18.5 in) (or approx. 5 cm (2 in) less than total length), work patt I as charted. Bind off 16 sts mid under arm (8 sts both sides of the marker). Work same for the other sleeve.

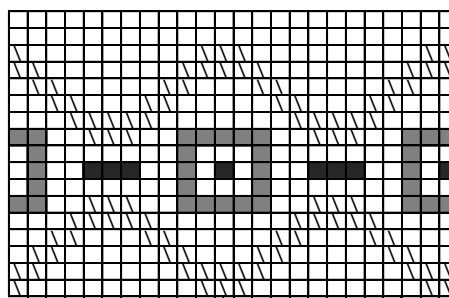
Yoke: Slip all sts on same circular needle, sleeves over the bound-off sts for armholes = 326-346-362-382-402-422 sts on a rnd. Work patt II as charted (check where to beg patt from mid st of each piece), place markers at each 4 seamline. Dec at each seamline as foll: before a marker: K2togtbl, after a marker: K2tog. Rep dec every 2nd rnd altog. 18-19-20-21-22-23 times = 182-194-202-214-226-238 sts rem. When patt II is ready, cont working in St st with off-white yarn, until all raglan-dec are completed.

Next rnd: Dec evenly across the rnd number of sts to be 168-176-184-192-208-220 sts. Change to needles size 2 ½ mm. Work 6 rnds in K2,P2 rib. Bind off. Using crochet hook size 3 mm and grey yarn, crochet 1 rnd buttonhole sts around neck edge. Weave in all ends on WS. Sew seams mid underarm. Sew on sequins (see photo).

PATTERN II



PATTERN I



- = off-white
- ▤ = beige
- = grey
- = dark red

BEG HERE

Viking Bjørk

V-neck sweater

1204-12

Size	XS	S	M	L	XL	XXL
Bust	86	93	96	102	110	115 cm
	33.9	36.6	38.8	40.2	43.3	in
Length	60	60	62	62	64	64 cm
	23.6	23.6	24.4	24.4	25.2	25.2 in
Sleeve length	50	50	52	52	53	53 cm
	19.7	19.7	20.5	20.5	20.9	in

ALTERNATIVE YARN: Viking Bjørk (90% cotton, 10% merino wool), Viking Alpaca Silk (50% alpaca, 50% silk), 50 g ball

Grey, 513	3	4	4	5	5	5 balls
Violet, 569	3	3	3	4	4	5 balls
Off-White, 502	3	3	3	4	4	5 balls

Circular needle and double pointed needles size 3 mm – US 1 or 2 and 2 or 3 – UK/Canadian 13 or 12 and 11

Gauge: 25 sts = approx. 10 cm (4 in) over St st using needles size 3 mm. **Check your gauge to ensure success.**

Note! Read through the instruction before starting the project.

Stripes:

Purl 6 rnds with violet – 22 rnds in St st with off-white – purl 22 rnds with violet – purl 1 rnd + 22 rnds in St st with grey, rep *-* until the end.

SWEATER

Using needles size 3 mm and grey yarn, cast on 440-472-488-528-568-600 sts. Work 10 rnds in K4,P4 rib. Dec 1 mid of each knit and purl stripe across the rnd = 330-354-366-396-426-450 sts. Cont working 10 rnds in K3,P3 rib. Dec again same as before = 220-236-244-264-284-300 sts. Work 6 rnds in K2,P2 rib. Place markers each side, 111-119-123-133-143-151 sts for back, and 109-117-121-131-141-149 sts for back. Dec 1 st both sides of the markers every 7-7-7-5 ½ -5 ½ -5 ½ cm (2.8-2.8-2.8-2.2-2.2-2.2 in) 3-3-3-4-4-4 times, before a marker: K2togtbl, after a marker: K2tog (= 208-224-232-248-268-280 sts). Work **same time** with stripes, **but** when work measures approx. 30-29-30-29-30-29 cm (11.8-11.4-11.8-11.4-11.8-11.4 in), bind off mid front st. Cont working back and forth, and dec for V-neck beg and end of every 4th row. When work measures approx. 35-34-35-34-35-34 cm (13.8-13.4-13.8-13.4-13.8-13.4 in), inc 1 st both sides of the markers approx. every 2 cm (0.8 in) altog. 2 times. When work measures 40-39-40-39-40-39 cm (15.7-15.4-15.7-15.4-15.7-15.4 in), bind off 16 sts at each side (8 sts both sides of the markers). Finish back and fronts separately.

Back

Cont working back and forth. Bind off at each edge every 2nd row 1x3, 1x2, and 1x1 st. When work measures approx. 60-60-62-62-64-64 cm (23.6-23.6-24.4-24.4-25.2-25.2 in), and armhole measures approx. 20-21-22-23-24-25 cm (7.9-8.3-8.7-9.1-9.4-9.8 in), bind off.

Fronts

Work same as for back. Cont rep dec at V-neck edge altog. 22-22-23-23-24-25 times. When work measures same as back, bind off.

Work same for the other side, rev all shaping.

Sleeves

Using needles size 3 mm and grey yarn, cast on 96-104-104-112-112-120 sts. Work rib same as for body, but end after 2nd rnd of K2,P2 = 48-52-52-56-56-60 sts on a rnd. Knit 1 rnd with grey yarn, and inc evenly across the rnd number of sts to be 64-66-68-68-70-70 sts. Cont working with stripes. Place a marker mid under arm. Inc 1 st both sides of the marker approx. every 2-2-2-1 ½ -1 ½ -1 ½ cm (0.8-0.8-0.8-0.6-0.6-0.6 in) until you have altog. 100-104-110-114-120-124 sts on a rnd. When work measures the given length, or as desired, bind off 16 sts mid under arm (8 sts both sides of the marker). Cont working back and forth, and bind off at each edge 1x3, 1x2 and 1x1 st. Bind off rem sts.

Work same for the other sleeve.

Finishing

Sew shoulder seams.

Neck band: Beg from one shoulder, using needles size 3 mm and grey yarn, pick or knit up approx. 204-204-212-212-220-220 sts. Work in K4,P4 rib. Place a marker mid front. Rib must be identical both sides of the mid st. Cont working in rnds. Dec 1 st both sides of the marker, before the marker: K2togtbl, after the marker: K2tog. When neck band measures approx. 4 cm (1.6 in), bind off in rib.

Sew on sleeves, and weave in all ends on WS.

Viking Bjørk

Dress

1204-13

Size:	XS	S	M	L	XL	XXL
Bust, approx:	85	90	95	102	110	118 cm
	33.5	35.4	37.4	40.2	43.3	46.4 in
Length:	76	78	80	80	82	82 cm
	29.9	30.7	31.5	31.5	32.3	32.3 in
Sleeve length:	48	49	50	51	51	52 cm
	18.9	19.3	19.7	20.1	20.1	20.5 in

ALTERNATIVE YARN: Viking Bjørk (90% cotton, 10% merino wool), Viking Alpaca Silk (50% alpaca, 50% silk), 50 g ball

Dark Green, 515	5	6	6	7	7	8 balls
Light Violet, 567	5	5	6	6	7	7 balls

Circular needle and double pointed needles size 3 mm – US 2 or 3 – UK/Canadian 11

Gauge: 25 sts = approx. 10 cm (4 in) over St st using needles size 3 mm. **Check your gauge to ensure success.**

DRESS

Using needles size 3 mm and dark grey yarn, cast on 272-288-296-312-336-352 sts. Work 3 ½ cm (1.4 in) in rnds in St st. Purl 1 rnd = folding edge + patt II as charted. Place markers each side, 137-145-149-157-169-177 sts for front, and 135-143-147-155-167-175 sts for back. Cont working in rnds in St st with grey yarn. Dec 1 st both sides of the markers, before a marker: K2togtbl, after a marker: K2tog 7. Rep dec every 7th rnd altog 20 times = 192-208-216-232-256-272 sts rem on a rnd. When work measures approx. 52-53-54-53-54-53 cm (20.5-20.9-21.3-20.9-21.3-20.9 in), measured from folding edge, knit an eyelet rnd: *K2tog - 1 yo*, rep *-* across the rnd. Work 2 rnds in St st, and then patt II as charted (check from mid front and back where to beg patt), **same time** inc 1 st both sides of the markers every 2nd rnd altog. 5-4-5-6-5-6 times = 212-224-236-256-276-296 sts on a rnd. When patt II is ready, work measures approx. 56-57-58-57-58-57 cm (22-22.4-22.8-22.4-22.8-22.4 in) measured from folding edge. Bind off 12 sts each side (6 sts both sides of the markers). Finish back and front separately. Note! You can finish the work in one piece until neck edge, omitting armhole dec, and cut it open afterwards.

Back

Cont working back and forth in patt III as charted (check from mid st where to beg patt). Bind off at each edge every 2nd row 1x3, 1x2, and 1x1 st. When work measures approx. 74-76-78-78-80-80 cm (29.1-29.9-30.7-30.7-31.5-31.5 in) (Note! When patt III is ready, cont working in St st with light violet yarn), bind off 39-39-41-41-43-43 mid sts. Finish each side separately. Bind off at neck edge every 2nd row 1x2, and 1x1 st = 18-21-23-28-32-37 sts rem for shoulder. When work measures 76-78-80-80-82-82 cm (29.9-30.7-31.5-31.5-32.3-32.3 in), and armhole measures approx. 20-21-22-23-24-25 cm (7.9-8.3-8.7-9.1-9.4-9.8 in), bind off. Work same for the other side, rev all shaping. .

Front

Work same as for back. When work measures approx. 66-68-70-70-71-71 cm (26-26.8-27.6-27.6-28-28 in), bind off 27-27-29-29-31-31 mid sts for neck edge. Finish each side separately. Bind off at neck edge every 2nd row 1x4, 1x3, 1x2, and 1x1 st = 18-21-23-28-32-37 sts rem for shoulder. When work measures same as back, bind off.

Sleeves

Using needles size 3 mm and dark grey yarn, cast on 116-120-124-128-132-132 sts. Work 3 cm (1.2 in) in rnds in St st. Next rnd: Knit all sts tog in pairs across the rnd = 58-60-62-64-66-66

sts. Change to light violet yarn, and cont working and rep patt I as charted. Place marker mid under arm. Inc 1 st both sides of the marker approx. every 2-2-2-2-1 ½ - 1 ½ cm (0.8-0.8-0.8-0.8-0.6-0.6 in) until you have altog. 100-104-110-114-120-124 sts on a rnd. Work until sleeve measures the given length (measured after the edge). If you have chosen to clip open the armholes, turn work inside out, and work 5 cm (2 in) in St st. Otherwise, bind off 12 sts mid under arm (6 sts both sides of the marker). Cont working back and forth. Bind off at each edge every 2nd row 1x3, 1x2, and 1x1 st. Bind off rem sts. Work same for the other sleeve.

Finishing

Sew shoulder seams.

Neck band: Using needles size 3 mm and light violet yarn, pick or knit up approx. 139-143-143-149-149-151 sts. Purl 1 rnd, and bind off sts knitwise.

Using dark grey yarn, sew approx. 1cm (0.4 in) long buttonhole sts around neck edge.

Sew on sleeves, and weave in all ends on WS. Thread a dark grey cord to eyelet rnd on the body.

Viking Bjørk

Cardigan

1204-14

Size	XS	S	M	L	XL	XXL
Bust	90	96	102	109	115	122
	35.4	38.8	40.2	42.9	45.3	48 in
Length	60	61	62	63	64	64 cm
	23.6	24	24.4	24.8	25.2	25.2 in
Sleeve length	47	48	49	50	52	52 cm
	18.5	18.9	18.9	19.7	20.5	20.5 in

ALTERNATIVE YARN: Viking Bjørk (90 % cotton, 10% merino wool), Viking Alpaca Silk (50% alpaca, 50 % silk), 50 g ball

White, 500 9 9 10 10 11 11 balls

Circular needle and double pointed needles size 2 ½ and 3 mm – US 1 or 2 and 2 and 3 – UK/Canadian 13 or 12 and 11 + 7 buttons

Gauge: 25 sts = approx. 10 cm (4 in) over St st using needles size 3 mm. **Check your gauge to ensure success.**

CARDIGAN

Using needles size 2 ½ mm, cast on 214-230-246-262-278-294 sts. Work back and forth in St st. When work measures 2 cm (0.8 in), knit an eyelet row = **folding edge**, from RS: *K2tog, 1 yo*, rep *-*, cast on same time 19 sts beg and end of row = front edges, worked K9 + P1 + K9. All measures are given from folding edge. Work 2 cm (0.8 in) in St st. Change to needles size 3 mm. Place markers both sides, 112-120-128-136-144-152 sts for back, and 70-74-78-82-86-90 sts for each front. Beg 1st row from RS, and work as foll: work 19 sts = front edge, St st over 4 sts - patt I as charted - St st until 35 sts rem - patt I as charted – St st over 4 sts + 19 sts for front edge.. Cont working back and forth as established, **but** when work measures 3 cm (1.2 in), make 1 buttonhole: Work 4 sts – bind off 2 sts (next row: cast on 2 sts over the bound-off sts) = buttonhole - work 7 sts - buttonhole – and work rem sts same as before. Make buttonholes approx. every 8 -8 -8 -8 -9 -9 cm (3.1-3.1-3.1-3.1-3.5-3.5 in). When work measures 40 cm (15.7 in) measured from **folding edge**, bind off at each side for armhole 12 sts = 6 sts both sides of the markers.

Work back and fronts separately.

Back

Cont working back and forth in St st. Bind off at each edge every 2nd row 1x2, and 1x1 st. When work measures the given length, and armhole measures approx. 22-23-24-25-26-26 cm (8.7-9.1-9.4-9.8-10.2-10.2 in). Bind off, or slip sts on cn.

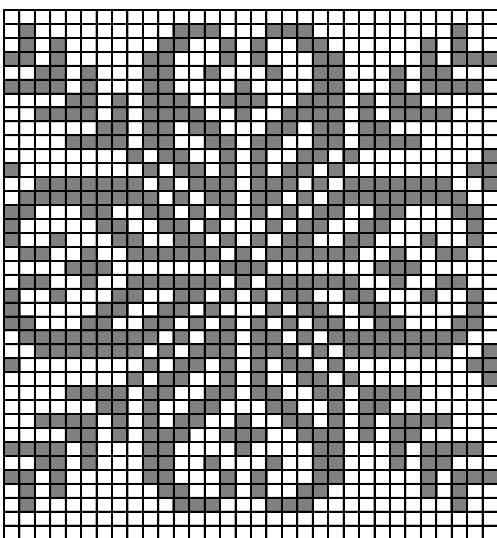
Right front

Work same as for back. Bind off at armhole edge same as for back (Note!: Remember buttonholes). When work measures 54-55-56-56-57-57 cm (21.3-21.7-22-22-22.4-22.4 in), bind off at neck edge 24-24-26-26-28-28 sts (incl. front edge sts). Bind off at neck edge every 2nd row 1x5, 1x3, 1x2, and 1x1 st = 26-30-32-36-38-42 sts rem. When work measures same as back, bind off sts, or slip them on holder.

Left front

Work same as for right front, but without dec. Rev all shaping.

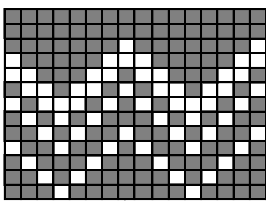
PATTERN III



□ = light violet
■ = dark grey

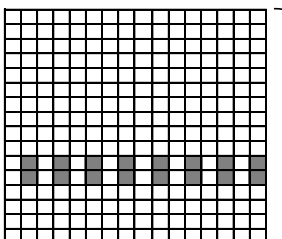
↑ = mid front and back

PATTERN II



↑ = mid front and back

PATTERN I



□ = light violet
■ = dark grey

Repeat

Sleeves

Using needles size 2 ½ mm, cast on 110-114-118-126-128-128 sts. Work in rnds 2 cm (0.8in) in St st. Work 1 eyelet rnd = **folding edge**: *K2tog, 1 yo*, rep *-* across the rnd. Work 2 cm (0.8 in) in St st. Change to needles size 3 mm. Place a marker mid under arm = beg of rnd. Cont working in St st. Dec 1 st both sides of the marker approx. every 2 cm (0.8 in) until 88-92-96-102-104-104 sts rem. Cont working in St st. Inc 1 st both sides of the marker every 2 cm (0.8 in). When work measures approx. 28-28-28-31-31-31 cm (11-11-11-12.2-12.2-12.2 in) (**measured from folding edge**), work patt I as charted, (check from mid where to beg patt) - Work 5 cm (2 in) (all sizes) – work patt I as charted - St st until you have 110-116-120-126-130-130 sts on a rnd, and work measures the given length, or as desired. Bind off 12 sts mid under arm (= 6 sts both sides of the marker). Cont working back and forth in St st. Bind off at each edge every 2nd row 1x2, and 1x1 st. Bind off.

Finishing

Join shoulder seams.

Fold lower edge of the body and sleeves in double, and sew on WS.

Fold front edges in double, and sew on WS.

Sew few sts around each buttonhole.

Neck band

Using needles size 2 ½ mm, pick or knit up approx. 118-120-122-124-126-128 sts around neck edge. Work back and forth 2 cm (0.8 in) in St st, eyelet row (= K2tog, 1 yo) + 2 cm (in) in St st. Bind off rather loosely.

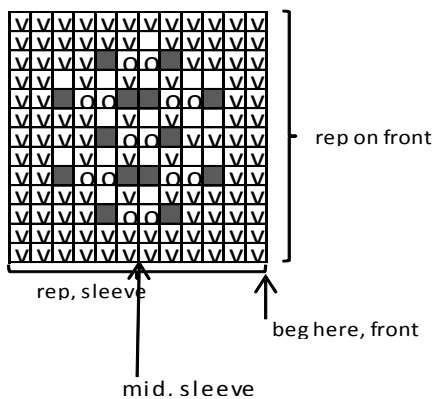
Fold neck band in double, and sew on WS.

Sew on sleeves.

Sew on buttons on left front edge.

Weave in all ends on WS.

PATTERN I



- = K on RS, P on WS
- ∇ = P on RS, K on WS
- = 1 yo
- = K2tog

ALTERNATIVE YARN: Viking Bjørk (90 % cotton 10% merino wool), Viking Alpaca Silk (50% alpaca, 50 % silk), 50 g ball

White, 500 6 6 7 7 8 8 balls

Short and long circular needle size 2 ½ and 3 mm – US 1 or 2 and 2 or 3 – UK/Canadian 13 or 12 and 11

Crochet hook size 2 ½ mm – US B/1 or C/2 – UK/Canadian 12 + 2 buckles

Gauge: 25 sts = approx. 10 cm (4 in) over St st using needles size 3 mm. **Check your gauge to ensure success.**

Seed stitch:

1st rnd: K1, P1

2nd rnd: Knit all p-sts, purl all k-sts.

Rep 2nd rnd.

TUNIC

Using needles size 2½ mm, cast on 247-259-271-291-311-331 sts. Work in rnds in Seed st. When work measures 3 cm (1.2 in), change to needles size 3 mm. Place markers each side, 128-134-140-150-160-170 sts for front, and 119-125-131-141-151-161 sts for back. Work as foll: K23-26-29-34-39-44, patt I+ patt II + patt III as charted = 82 sts, K23-26-29-34-39-44, knit rem sts (= back). Cont working as established. When work measures 24-24-24-20-20-20 cm (9.4-9.4-9.4-7.9-7.9-7.9 in), dec 1 st both sides of the markers, before a marker: K2togtbl, after a marker: K2tog. Rep dec every 4 cm (1.6 in), altog. 6-6-6-7-7-7 times = 223-235-247-263-283-303 sts. When work measures 48 cm (18.9 in) (all sizes), or desired length before armhole, bind off for armhole at each side 12 sts = 6 sts both sides of the markers. Finish back and fronts separately.

Back

Cont working back and forth in St st. Bind off at each edge every 2nd row 1x3, 1x2, and 1x1 st. When work measures the given length, and armhole measures 20-21-22-23-24-24 cm (7.9-8.3-8.7-9.1-9.4-9.4 in), bind off st, or slip on holder..

Front

Cont working back and forth same as before. Bind off at armhole edge same as for back. When work measures 61-62-63-64-65-65 cm (24-24.4-24.8-25.2-25.6-25.6 in), dec 9 sts evenly across 34-38-40-42-44-48 mid sts. Bind off 25-29-31-33-35-39 mid sts, Finish both sides separately.

Right front:

Cont working back and forth. Bind off at neck edge every 2nd row 1x5, 1x3, 1x2, and 1x1 st. When work measures same as back, bind off or slip sts on holder.

Left front

Work same as for right front, rev all shaping.

Finishing

Join shoulder seams.

Weave in all ends on WS.

Edges

Using crochet hook size 2½, crochet a picot edge around neck edge and armholes:

Beg from RS, left armhole or mid back neck edge. Crochet back and forth 2 rnds sc. Work 1 picot row (= RS) :

ch3, 1 sc to 1st ch-st, skip 1 st, 1 sc to next st, rep *-* across the rnd. Break yarn, draw through the loop, and weave in on WS.

Shoulder straps

Using needles size 2½ mm, cast on 17-19-21-23-25-27 sts. Work back and forth 6 rows in Seed st. Bind off 1 st beg of each row until approx. 13-15-15-15-17-17 sts rem. Cont working in Seed st until work measures approx. 6-7-7-7-8-8 cm (2.4-2.8-2.8-2.8-

Viking Bjørk

Tunic

1204-15

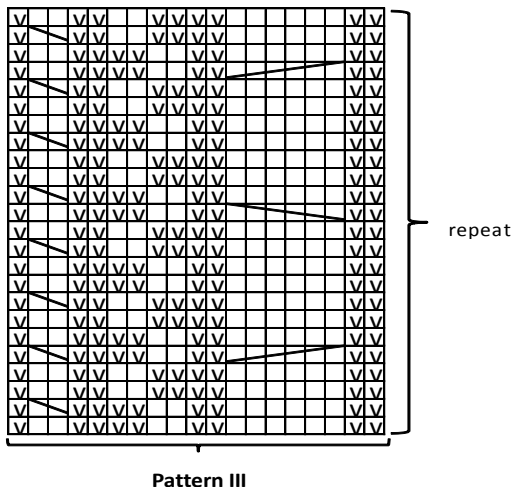
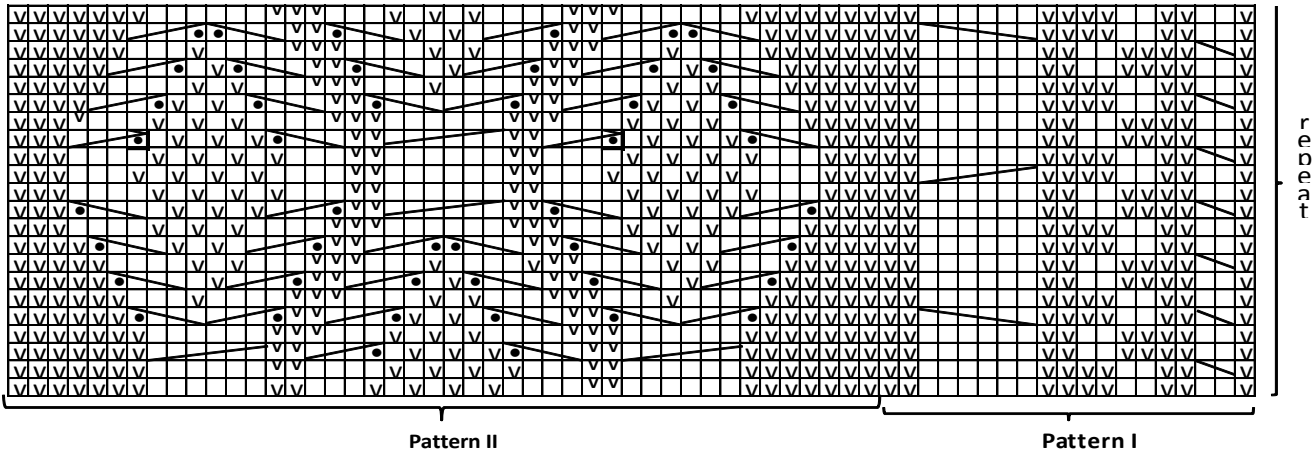
Size	XS	S	M	L	XL	XXL
Bust	85	90	95	102	110	118
	33.5	35.4	37.4	40.2	43.3	46.4 in
Length	68	69	70	71	72	72 cm
	26.8	27.2	27.6	28	28.3	28.3 in

3.1-3.1 in). Bind off 1 st at each edge 8 times = 5-8-8-8-9-9 sts.
 Bind off.

Sew straps on shoulders, thread through the buckle, and fasten with few stitches on front.

Work same for the other strap.

Weave in all ends on WS.



- = knit (purl on WS)
- = purl (knit on WS)
- = sl 2 sts on cn, hold to front, K2, knit sts from cn
- = sl 1 st on cn, hold to back, K3, knit 1 st from cn
- = sl 3 sts on cn, hold to front, K1, knit sts from cn
- = sl 3 sts on cn, hold to back, K3, knit sts from cn
- = sl 3 sts on cn, hold to front, K3, knit sts from cn
- = knit 2nd st tbl behind 1st st, knit 1st st. Slip both sts on RH needle = minicable
 WS: sl 1 st on cn, hold to front, purl 2nd st tbl, purl 1 st from cn

Viking Bjørk

Man's cardigan

1204-16

Size	XS	S	M	L	XL	XXL
Chest	104	111	114	120	124	130 cm
	41	43.7	44.9	47.20	48.8	51.2 in
Length	75	76	77	78	80	82 cm
	29.5	29.9	30.3	30.7	31.5	32.3 in
Sleeve length	47	48	50	52	54	55 cm
	18.5	18.9	19.7	20.5	21.3	21.7 in

ALTERNATIVE YARN: Viking Bjørk (90 % cotton, 10% merino wool), Viking Alpaca Silk (50% alpaca, 50 % silk), 50 g ball

Navy Blue, 526 12 12 13 13 14 14 balls

Double pointed needles and circular needle size 2 ½ and 3 mm – US 1 or 2 and 2 or 3 – UK/Canadian 13 or 12 and 11 + 8 buttons

Gauge: 25 sts = approx. 10 cm over St st using needles size 3 mm. **Check your gauge to ensure success.**

CARDIGAN

Using needles size 2½ mm, cast on 285-295-305-325-331-349 sts. Work back and forth 6-6-6-7-7-7 cm (2.4-2.4-2.4-2.8-2.8-2.8 in) in K1,P1 rib. Inc evenly across last row number of sts to be 296-314-323-341-350-368 sts. Change to needles size 3 mm. Place markers each side, 146-156-161-169-174-182 sts for back, and 75-79-81-86-88-93 sts for front. Beg patt from RS row as foll: Patt I as charted (= 46 sts), cont working and rep patt II as charted until 52 sts rem, K6, patt I. Cont working as established. When work measures 51-51-51-51-52-53 cm (20.1-20.1-20.1-20.1-20.5-20.9 in), bind off 10 sts each side = 5 sts both sides of the markers. Finish back and front separately.

Back

Cont working same as before. Bind off at each edge every 2nd row 1x2, 1x1 = 130-140-145-153-158-166 sts. When work measures the given length, and armhole measures approx. 24-25-26-27-28-29 cm (9.4-9.8-10.2-10.6-11-11.4 in), slip 50-50-52-52-54-54 mid sts on holder. Dec evenly across shoulder sts number of sts to be 36-40-42-44-46-50 sts. Bind off, or slip sts on holder.

Right front

Cont working same as before. Bind off at armhole edge same as for back. When work measures 68-69-70-71-73-75 cm (26.8-27.2-27.6-28-28.7-29.5 in), bind off first 15-15-15-17-17-18 sts for neck edge. Cont working back and forth, and bind off at neck edge every 2nd row 1x5, 1x3, 1x2, and 1x1 st = 41-45-47-50-52-56 sts. When armhole measures same as back, dec evenly across shoulder sts number of sts to be 36-40-42-44-46-50 sts. Bind off, or slip sts on holder.

Left front

Work same as for right front, rev all shaping.

Sleeves

Using needles size 2½ mm, cast on 64-64-64-68-68-68 sts. Work in rnds 6-6-6-7-7-7 cm (2.4-2.4-2.4-2.8-2.8-2.8 in) K1,P2 rib. Knit 1 rnd, adjusting evenly across the rnd number of sts to be 70-70-70-79-79-88 sts. Place a marker round 1st st mid under arm = beg of rnd. Change to needles size 3 mm. Work in patt II as charted. **Inc** 1 st both sides of the marker every 1 ½ cm (0.6 in) (inc sts are worked in patt) until you have altog. 120-126-128-137-141-148 sts on a rnd. When sleeve measures 47-48-50-52-54-55 cm (18.5-18.9-19.7-20.5-21.3-21.7 in), or desired length, bind off 10 sts mid under arm = 5 sts both sides of the

marker. Cont working back and forth in patt. Bind off at each edge every 2nd row 1x2, and 1x1 st. Bind off.

Finishing

Join shoulder seams.

Right front edge

Using needles size 2½ mm, pick or knit up from RS approx. 164-166-168-170-174-178 sts. Work back and forth 11 rows in St st, purl 1 row from RS (= folding edge) + 11 p rows in St st. Bind off rather loosely.

Left front edge

Work same as for right front edge, but make buttonholes on 6th row as foll: beg from neck edge *K23-24-24-24-25-26, bind off 3 sts, next row: cast on 3 sts over the bound-off sts*, rep *-* altog. 6 times, knit rem sts. Work 5 rows in St st, purl 1 row, 5 rows in St st, make buttonholes on 6th row (beg from neck edge, WS row) + 5 rows in St st. Bind off.

Fold edges in double, and sew on WS.

Collar

Pick or knit up from RS 45 sts from each side of the neck edge + sts on holder = 141-141-143-143-145-145 sts. Work back and forth in K1,P1 rib. When collar measures approx. 14 cm (5.5 in), make a buttonhole: work 4 sts, bind off 3 sts, next row: cast on 3 sts over the bound-off sts, work until 7 sts rem, bind off 3 sts, next row: cast on 3 sts over the bound-off sts, work 4 sts. When work measures approx. 16 cm (6.3 in), bind off all sts rather loosely.

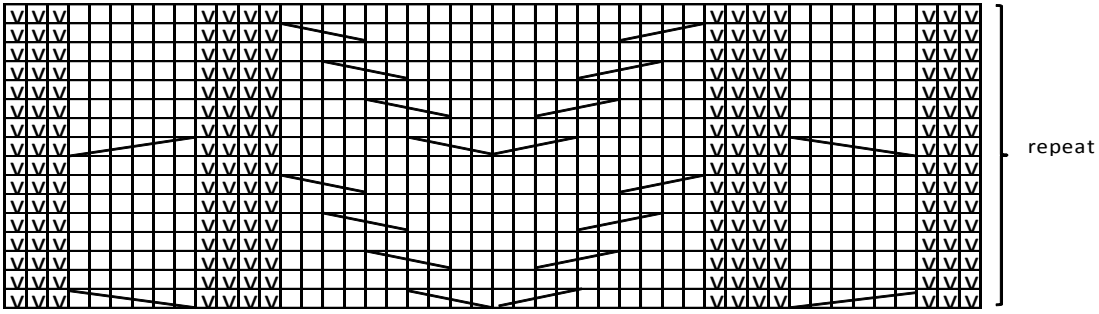
Sew on sleeves.

Weave in all ends on WS.

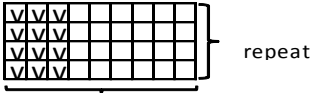
Sew 6 buttons on right front edge, and 1 button each side of the neck edge for the buttonholes on collar (see photo).

Fold collar on RS, and button up.

PATTERN I



PATTERN II



repeat
↑
beg here. sleeve

□ = K on RS, P on WS

▣ = P on RS, K on WS

▤ = sl 2 sts on cn, hold to back, K2, knit sts from cn

▥ = sl 2 sts on cn, hold to front, K2, knit sts from cn

▧ = sl 3 sts on cn, hold to back, K3, knit sts from cn

▨ = sl 3 sts on cn, hold to front, K3, knit sts from cn

Viking Bjørk

Man's sweater

1204-17

Size	XS	S	M	L	XL	XXL
Chest	106	110	115	120	125	130 cm
	41.6	43.3	45.3	47.2	49.3	51.2 in
Length	65	66	67	70	71	72 cm
	25.6	26	26.4	27.6	28	28.3 in
Sleeve length	54	55	58	60	62	64 cm
	21.3	21.7	22.8	23.6	24.4	25.2 in

ALTERNATIVE YARN: Viking Bjørk (90 % cotton, 10% merino wool), Viking Alpaca Silk (50% alpaca, 50 % silk) 50 g ball

Navy Blue, 526 9 9 9 10 10 10 balls
 Mint Green, 527 2 2 2 2 2 2 balls
 Blue, 523 2 2 2 2 2 2 balls
 Beige, 507 1 1 1 1 1 1 ball

Circular needle and double pointed needles size 2 ½ and 3 mm – US 1 or 2 and 2 or 3- UK/Canadian 13 or 12 and 11 + 3 button

Gauge: 25 sts = approx. 10 cm (4 in) over St st using needles size 3 mm. **Check your gauge to ensure success.**

SWEATER

Using needles size 2 ½ mm and navy blue yarn, cast on 264-276-288-300-312-324 sts. Work in rnds 6 cm (2.4 in) in K1,P1 rib.

Change to needles size 3 mm. Knit 1rnd. Place markers each side, 132-138-144-150-156-162 sts for both back and front.

Change to mint green yarn, work 5 cm (2 in) in K2,P2 rib. Cont working in rib with 5 cm (2 in) stripes as foll: blue, navy blue, beige, mint green, navy blue, blue, beige, navy blue, mint green, blue, navy blue.

When work measures 41-41-41-43-43-43 cm (16.1-16.116.1-16.916.916.9 in), bind off 10-8-10-8-10-8 sts each side = 5-4-5-4-5-4 sts both sides of the markers. Finish back and front separately.

Back

Cont working back and forth in rib stripes. When work measures approx. 24-25-26-27-28-29 cm (9.4-9.8-10.2-10.6-11-11.4 in), bind off, (or slip sts on holder).

Front

Work same as for back. When work measures 46-47-48-49-50-51 cm (18.1-18.5-18.9-19.7-20.1 in), bind off 14 mid sts. Finish each side separately.

Right front

Cont working in rib with stripes. When work measures 58-59-60-63-64-65 cm (22.8-23.2-23.6-24.8-25.2-25.6 in), bind off first 12-12-13-13-14-14 sts for neck edge. Bind off at neck edge every 2nd row 1x3, 1x2, and 1x1 st = 36-40-41-45-46-50 sts. When work measures same as back, bind off (or slip sts on holder).

Left front work same as for right front, rev all shaping.

Sleeves

(Note! Sleeves will be turned inside out, so that rev St st is RS. Using needles size 2 ½ mm and navy blue yarn, cast on 64-64-64-68-68-68 sts. Work in rnds 5 cm (2 in) in K1,P1 rib. Place a marker mid under arm = beg of rnd. Change to needles size 3 mm. Cont working in St st. Inc 1 st both sides of the marker every 1 ½ cm (0.6 in) (same for all sizes) until you have 120-126-130-136-140-144 sts on a rnd. When work measures 2 cm (0.8 in) less than the given length, divide work from mid under

arm. Cont working back and forth for another 2 cm (0.8 in). Bind off.

Work same for the other sleeve.

Finishing

Join shoulder seams.

Neck band

Using needles size 2½ mm and navy blue yarn, pick or knit up approx 110-112-116-118-120-122 sts around neck edge. Work back and forth in rib. When neck edge measures approx. 10 cm (4 in), bind off sts rather loosely.

Fold neck band in double, and sew on WS.

Front borders

Using needles size 2½ mm and navy blue yarn, pick or knit up along right front edge approx. 44-44-44-48-48-48 sts. Work back and forth in rib. When border measures approx. 10 cm (4 in), bind off sts.

Left front order Work same as for right front order, but when work measures 2 ½ cm (1 in) and 7 ½ cm (3 in), make buttonholes as foll: First buttonhole 5-5-5-6-6-6 sts from neck edge, last 10 sts from the lower edge, and third in between them. Buttonhole: Bind off 3 sts. Next row: Cast on 3 sts over the bound-off sts.

Fold borders in double, and sew on WS.

Place buttonhole border on top of button border, and sew on body.

Weave in all ends on WS.

Turn sleeves inside out, and sew them on.

Sew few stitches around buttonholes.

Sew 3 buttons on left front border.

Viking Bjørk

Cardigan with cables

1204-18

Size	XS	S	M	L	XL	XXL
Chest	106	110	115	120	125	130 cm
	41.6	43.3	45.3	47.2	49.2	51.2 in
Length	65	66	67	69	70	70 cm
	25.6	26	26.4	27.2	27.6	27.6 in
Sleeve length	47	48	50	52	54	55 cm
	18.5	18.9	19.7	20.5	21.3	21.7 in

ALTERNATIVE YARN: Viking Bjørk (90% cotton, 10% merino wool), Viking Alpaca Silk (50% alpaca, 50% silk), 50 g ball

Off-White, 502 13 13 14 15 16 17 balls

Circular needle and double pointed needles size 3 mm – US 2 or 3 – UK/Canadian 11 + 5 buttons

Gauge: 25 sts = approx. 10 cm (4 in) over St st using needles size 3 mm. **Check your gauge to ensure success.**

BACK

Using needles size 3 mm, cast on 162-166-170-178-186-190 sts. Work back and forth approx. 4 cm (1.6 in) in K2,P2 rib. Beg from RS, and work as foll: P25-29-29-33-33-37 – cable patt II over next 32 sts – patt I over 48-44-48-48-56-52 sts – cable patt II over 32 sts - P25-29-29-33-33-37. Cont back and forth as established. When work measures 45-45-46-46-48-48 cm (17.7-

17.7-18.1-18.1-18.9-18.9 in), cont same as before but without twisting the cables = work in rib until the end (adjust the rib patt to cont same as before both sides of cable). When work measures 65-66-67-69-70-70 cm (25.6-26-26.4-27.2-27.6-27.6 in), bind off.

Right front

Using needles size 3 mm and off-white yarn, cast on 98-102-106-110-110-114 sts. Work rib same as for back. Beg from RS, and work as foll: 26 sts in rib (= front edge) – purl next 15-15-19-19-19-19 sts – cable patt I over next 32 sts - end with P25-29-29-33-33-37. Cont working back and forth as established. When work measures approx. 35-36-37-39-40-40 cm (13.8-14.2-14.6-15.4-15.7-15.7 in), slip front edge sts on holder. Cont working over rem sts, and dec 1 st beg of row inside 1 selvage st approx. every 4th row. Note! End cable patt same as for back. Cont with rib, and beg dec for V-neck. Rep dec altog. 25 times, 47-51-55-59-59-63 sts rem for shoulder. When front measures same as back, bind off.

Place markers for altog. 5 buttons along front edge. One approx. 4 cm (1.6 in) from lower edge, and one just below V-neck, rest evenly spaced apart.

Left front

Work same as for right front, rev all shaping.

Make buttonholes on front edge, inside 12 sts. Buttonhole: Bind off 4 sts, next row: Cast on 4 sts over the bound-off sts.

Sleeves

Using needles size 3 mm and off-white yarn, cast on 64-68-68-72-72-76 sts. Work in rnds approx. 10 cm (4 in) in K2,P2 rib. Place markers each side of 32 mid sts (worked in cable st). Knit 1 rnd, adjusting evenly across the rnd number of sts to be 80-86-86-92-92-98 sts. **Note!** No inc over 32 mid sts (= cable patt). Cont working in rnds in patt as foll: P24-27-27-30-30-33 – patt over next 32 sts - P24-27-27-30-30-33. Cont working in rnds. Place a marker mid under arm. Inc 1 st both sides of the marker approx. every 1 ½ - 2 - 1 ½ - 1 ½ - 1 ½ - 1 ½ cm (0.6-0.8-0.6-0.6-0.6-0.6 in) until you have altog. 120-124-130-136-140-144 sts on a rnd. When work measures the given length, or as desired, bind off.

Work same for the other sleeve.

Finishing

Sew sideseams.

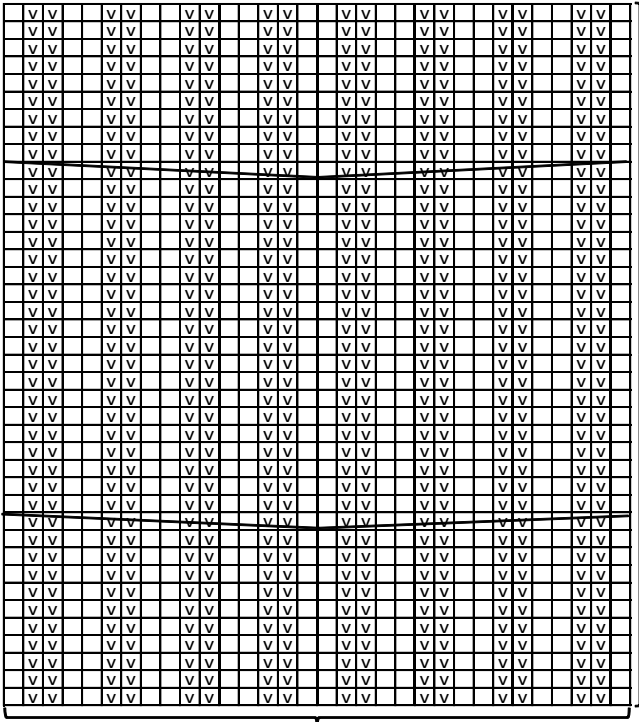
Collar: Note! Cont working in Double Seed st, in patt I as

charted. Slip right front edge sts on needles size 3 mm, cont working in patt I, inc 1 st on the inner edge (= the edge that will be sewn along right front) until the collar reaches up to the shoulder. Inc sts are worked in Seed st. Cont working without inc until collar reaches up to mid back neck edge. Slip sts on holder.

Work same for left front, but in reverse.

Sew on sleeves. Weave in all ends on WS.

Sew on collar without stretching it. Sew on buttons.



Pattern II over 32 sts

□ = knit (K on RS, P on WS)

∇ = purl (P on RS, K on WS)

∇ ∇ ∇ ∇ ∇ ∇ ∇ ∇ = sl 8 sts on cn, hold to front,
K1, P2, K2, P2, K1, work sts from cn:
K1, P2, K2, P2, K1

∇ ∇ ∇ ∇ ∇ ∇ ∇ ∇ = sl 8 sts on cn, hold to back,
K1, P2, K2, P2, K1, work sts from cn:
K1, P2, K2, P2, K1

PATTERN I

