

Viking Bjørk

Cardigan with hood

1203-1

Size:	2/4	6	8	10	12 yrs
Chest: approx.	65	70	75	80	84 cm
	25.6	27.6	29.5	31.5	33.1 in
Length: approx.	38	43	47	51	55 cm
	15	16.9	18.5	20.1	21.7 in
Sleeve length: approx.	30	34	38	42	45 cm
	11.8	13.4	15	16.5	17.7 in

ALTERNATIVE YARN: Viking Bjørk (90% cotton 10% merino wool, superwash), Viking Alpaca Silk (50% alpaca, 50% silk), 50 g ball

Light Grey, 513	5	6	7	8	9 balls
Pink, 564	1	1	1	1	1 ball
Dark Violet, 569	1	1	1	1	1 ball
White, 500	1	1	1	1	1 ball
Mint Green, 527	1	1	1	1	1 ball

Circular needle and double pointed needles size 2½ and 3 mm – US 1 or 2 and 4 – UK/Canadian 13 or 12 and 11

Crochet hook size 3 mm - US C/2 or D/3 – UK/Canadian 11

+ 4 toggles

Gauge: 25 sts = approx. 10 cm (4 in) over St st using needles size 3 mm.

Check your gauge to ensure success.

Body

Using needles size 2½ mm and grey yarn, cast on 163-175-187-199-211 sts. Work back and forth approx. 4-4-5-5-5 cm (1.6-1.6-2-2-2 in) in K1,P1 rib. Change to needles size 3 mm. Cont working in rnds in St st and patt I as charted, **but** cast on 3 sts mid front (= purl each rnd with basic clr, not included in the number of sts). When patt I is ready, cont working in St st with basic clr until work measures approx. 19-20-21-22-23 cm (7.5-7.9-8.3-8.7-9.1 in), measured from folding edge. Bind off mid 23-23-27-27-27 sts. Finish each side separately. Work 5-5-6-6-6 cm (2-2-2.4-2.4-2.4 in) in St st. Bind off. Work same for the other side. Join mid back seam. Sew for top seam the bound-off mid sts to the sides. Fold front rib in double, and sew on WS for a tunnel for a cord. Sew on sleeves, and sew the seam allowance on WS. Weave in all ends on WS. Sew hood inside neck border. Beg from mid back (adjust over mid back if needed), cont sewing until mid front, **but** don't sew over hood's front rib. Twist a cord with grey yarn, and thread into front rib tunnel of the hood. Loops for toggles: Using crochet hook size 3 mm and grey yarn, ch20, turn, 1 sc to each st. Make altog. 8 loops. Sew 4 loops on left front to form buttonhole loops. Use the other 4 loops to attach the toggles on right front.

Sleeves

Using needles size 2½ mm and grey yarn, cast on 36-38-40-42-44 sts. Work in rnds 4-4-5-5-5 cm (1.6-1.6-2-2-2 in) in K1,P1 rib. Change to needles size 3 mm. Knit 1 rnd, adjusting evenly across the rnd number of sts to be 49-51-53-57-63 sts. Place a marker beg of the rnd = mid under arm. Work in patt I as charted. Inc 1 st both sides of the marker approx. every 2½-2½-2½-2½-3 cm (1-1-1-1-1.2 in) until you have altog. 69-73-77-83-87 sts on a rnd. When patt I is ready, cont working in rnds in St st with basic clr. When work measures the given length, or as desired, turn the inside out. Work 5 rnds in St st with basic clr (= seam allowance sewn over the cut edges on WS). Bind off rather loosely.

Finishing

Sew 4 dense seams with sewing machine along purl sts mid front and armholes (= approx. 14-15-16-17-18 cm (5.5-5.9-6.3-6.7-7.1 in). Clip open between the seams. Sew shoulder seams.

Neck border: Using needles size 2½ and grey yarn, pick or knit up approx. 81-87-93-97-101 sts along neck edge. Work back and forth 5 cm (2 in) in K1,P1 rib. Bind off rather loosely in rib. Fold neck edge in double and sew on WS.

Right front border: Using needles size 2½ mm and grey yarn, pick or knit up approx. 87-97-107-117-125 sts. Work back and forth approx. 3 cm (1.2 in) in K1,P1 rib. Bind off.

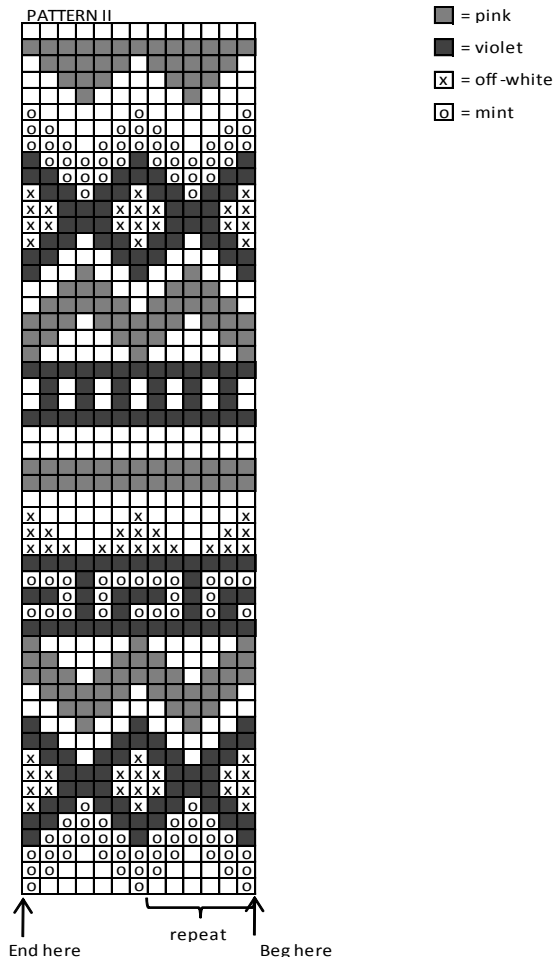
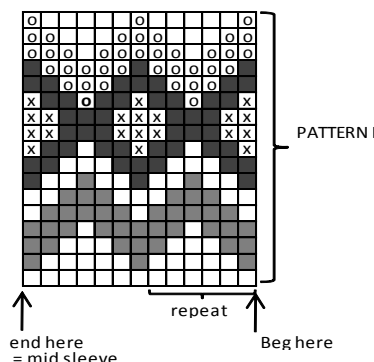
Band over cut edge: Using needles size 3 mm and grey yarn, cast on 4 sts. Work back and forth in St st until band reaches up to neck edge (approx. 29-34-36-40-44 cm (11.4-13.4-14.2-15.7-17.3 in). Bind off, and sew on WS (over the cut-off edge of mid front).

Left front border: Work same as for right front border.

HOOD

Using needles size 2½ mm and grey yarn, cast on 97-103-115-115-121

sts. Work back and forth 2½ cm (1 in) in K1,P1 rib. Knit 1 row (= WS) = folding edge + 2½ cm (1 in) in rib. Change to needles size 3 mm. Cont working in St st and patt I as charted. When patt I is ready, cont working in St st with basic clr until work measures approx. 19-20-21-22-23 cm (7.5-7.9-8.3-8.7-9.1 in), measured from folding edge. Bind off mid 23-23-27-27-27 sts. Finish each side separately. Work 5-5-6-6-6 cm (2-2-2.4-2.4-2.4 in) in St st. Bind off. Work same for the other side. Join mid back seam. Sew for top seam the bound-off mid sts to the sides. Fold front rib in double, and sew on WS for a tunnel for a cord. Sew on sleeves, and sew the seam allowance on WS. Weave in all ends on WS. Sew hood inside neck border. Beg from mid back (adjust over mid back if needed), cont sewing until mid front, **but** don't sew over hood's front rib. Twist a cord with grey yarn, and thread into front rib tunnel of the hood. Loops for toggles: Using crochet hook size 3 mm and grey yarn, ch20, turn, 1 sc to each st. Make altog. 8 loops. Sew 4 loops on left front to form buttonhole loops. Use the other 4 loops to attach the toggles on right front.



- = grey
- = pink
- = violet
- ⊗ = off-white
- ⊙ = mint

Viking Bjørk

Poncho

1203-2

Size:	4/6	8/10 yrs
Length, approx.	40	48 cm
	15.7	18.9 in

ALTERNATIVE YARN: Viking Bjørk (90% cotton, 10% merino wool, superwash), Viking Alpaca/Silk (50% alpaca, 50% silk), 50 g ball

White, 500 5 6 balls

Circular needle and double pointed needles size 2 ½ and 3 mm – US 1 or 2 and 2 or 3 – UK/Canadian 13 or 12 and 11

Gauge: 25 sts = approx. 10 cm (4 in) over St st using needles size 3 mm. **Check your gauge to ensure success.**

PONCHO

Using needles size 3 mm and white yarn, cast on 91-99 sts. Work back and forth 3 rows in St st. Cont as foll:

1st row: Beg from RS: K1 (= selvage st) – *K2 – 1 yo - K1 – 1 yo– K1*, rep *-* across the row, end with K2 = 135-147 sts.

2nd row: K1 (= selvage st), purl all sts, end with K1 = selvage st.

3rd row: Knit all sts.

4th row: K1 (= selvage st), purl all sts, end with K1 = selvage st.

5th row (RS): K1 (= selvage st) – K2 – 1 yo - *K3 – 1 yo*, rep *-* across the row, end with K3 = 179-195 sts.

6th row: K1 (= selvage st), purl all sts, end with K1 = selvage st.

7th row: Knit all sts.

8th row: K1 (= selvage st), purl all sts, end with K1 = selvage st.

9th row (RS): K1 (= selvage st), *K4 – 1 yo*, rep *-* across the row, end with K2 (last st = selvage st) = 223-243 sts.

10th row: K1 (= selvage st), purl all sts, end with K1 = selvage st.

11th row: Knit all sts.

12th row: Purl all sts, adjusting evenly across the row number of sts to be 227-257 sts.

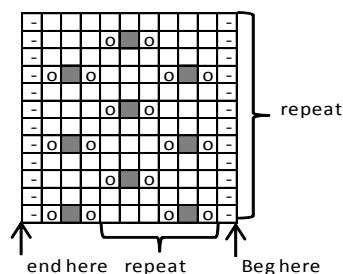
Place markers each side, 115-129 sts for back, and 56-64 sts for each front. Cont working back and forth in patt as charted until work measures approx. 23-28 cm (9.1-11 in) (beg and end as charted). Divide work at sidemarkers for armholes. Work back and fronts separately until work measures approx. 34-41 cm (13.4-16.1 in). Slip all sts on same circular needle again, and cont working back and forth in patt until work measures approx. 3-4 cm (1.2-1.6 in), measured from armholes. Change to needles size 2½ mm. Work 2 cm (0.8 in) in St st. Beg from RS and work as foll for folding edge: K1 (= selvage st) – *K2tog, 1 yo*, rep *-* until 1 st rem – K1 (= selvage st). Work 3 cm (1.2 in) in St st. Bind off rather loosely. Fold edge in double and sew on WS.

Armhole edges: Using needles size 2½ mm, pick or knit up approx. 50-66 sts around armhole. Work 5 rnds in St st. Work for folding edge as foll: *K2tog, 1 yo*, rep *-* across the rnd + 5 rnds in St st. Bind off. Fold edge in double and sew on WS. Work same for the other armhole edge.

Front edges: Using needles size 2½ mm, pick or knit up along front edge approx. 101-121 sts. Work back and forth 2 cm (0.8 in) in St st. Work same as for the lower edge + 2 cm (0.8 in) in St st. Bind off rather loosely. Fold edge in double and sew on WS. Work same for the other front edge.

Neck band: Beg from mid front. Using needles size 2½ mm, pick or knit up approx. 101-109 sts. Work back and forth 2 cm (0.8 in) in St st. Work same as for the lower edge + 2 cm (0.8 in) in St st. Fold edge in double and sew on WS **Note!** Don't sew the short

edges. Weave in all ends on WS. Twist a cord and thread through the neck band tunnel.



□ = K K on RS, P on WS

⊖ = 1 yo

■ = sl 1 st, K2tog, pssso

□ = selvage st (knit every row)

Viking Bjørk

Tunic

1203-3

Size:	2	4	6	8	10 yrs
Chest: approx.	54	59	65	70	75 cm
	21.3	23.2	25.6	27.6	29.5 in
Length: approx.	50	54	58	62	65 cm
	19.7	21.3	22.8	24.4	25.6 in

ALTERNATIVE YARN: Viking Bjørk (90% cotton, 10% merino wool, superwash), Viking Alpaca Silk (50% alpaca, 50% silk), 50 g balls

White, 500	1	1	1	1	1 ball
Mint, 527	1	1	1	2	2 balls
Cherry, 563	1	1	1	1	1 ball
Orange, 551	1	1	1	1	1 ball
Pink, 564	1	1	1	1	1 ball
Green, 536	1	1	1	1	1 ball
Light Violet, 567	1	1	1	1	1 ball
Light Blue, 520	1	1	1	1	1 ball

Double pointed needles and circular needle size 3 mm – US 2 or 3 – UK/Canadian 11

Gauge: 25 sts = approx. 10 cm (4 in) over St st using needles size 3 mm. **Check your gauge to ensure success.**

TUNIC

Beg from neck edge: Using needles size 3 mm and mint green yarn, cast on 92-100-112-120-128 sts. Work back and forth 2 cm (0.8 in) in Garter st. Cont working in rnds in St st. Beg from beg of the rnd = mid back: K14-15-17-18-19 – place a marker to next st – K16-18-20-22-24 – place a marker to next st – K28-30-34-36-38 – place a marker to next st – K16-18-20-22-24 – place a marker to next st – K14-15-17-18-19. Work is now divided into 4 panels. Cont working in rnds, and inc 1 st (= yo) every 2nd rnd both sides of each marker until you have inc altog 14-16-18-20-22 times (= 204-228-256-280-304 sts on a rnd). Bind off sleeve sts as foll: Beg from mid back marker, work until next marker, knit marked st, bind off sts until next marker (not the marked st). Work again until next marker, and bind off in the same way for the other sleeve. Next rnd: Cast on 10-10-10-10-10 sts over the bound-off sleeve sts at each side = 136-148-164-176-188 sts on a rnd. Cont working in

rnds in St st with mint green yarn until work measures 2-3-3-4-4 cm (0.8-1.2-1.2-1.6-1.6 in), measured from the armholes. Break yarn beg of rnd, and place new markers each side, 68-74-82-88-94 sts for both back and front. Beg rnd from one side, and cont working in Garter st with stripes: 2 rnds in each clr : light violet – cherry – white – orange – green– light blue - pink. Cont working in St st with stripes, **and** inc 1 st both sides of the markers every 8th rnd until the end of work. Striping: 16 rnds in white – 16 rnds in orange – 16 rnds in pink – 4 rnds in green – 4 rnds in pink – 4 rnds in white- 4 rnds in light blue – 4 rnds in white - 4 rnds in light blue– 4 rnds in white – 4 rnds in light blue– 16 rnds in light violet – 4 rnds in green – 4 rnds in light violet– 16 rnds in orange. Cont working in cherry clr yarn until work measures approx. 3-3-3-4-4 cm (in) less than total length. Change to white yarn, and work 2-2-4-4-4 rnds in St st. Work approx. 2½ cm (1 in) in Garter st. Bind off rather loosely.

Armhole edges

Beg mid under arm. Using needles size 3 mm and mint green yarn, pick or knit up 50-56-60-66-72 sts around armhole. Work back and forth 6 rows in Garter st. Bind off. Sew seam under arm. Work same for the other armhole edge.

Finishing

Sew neck edge seam mid back. Weave in all ends on WS.

Viking Bjørk

Cardigan

1203-4

Size	2	4	6	8	10	12 yrs
Chest	61	67	72	77	82	85 cm
	24	26.4	28.3	30.3	32.3	33.5 in
Length	38	41	46	51	55	59 cm
	15	16.1	18.1	20.1	21.7	23.2 in
Long sleeves, length	28	31	35	38	42	45 cm
	11	12.2	13.8	15	16.5	17.7 in
¾ sleeves, length	18	21	25	27	30	32 cm
	7.1	8.3	9.8	10.6	11.8	12.6 in

ALTERNATIVE YARN: Viking Bjørk (90 % cotton, 10% merino wool, superwash), Viking Alpaca Silk (50% alpaca, 50 % silk), 50 g balls

CARDIGAN

White, 500 4 5 5 6 6 7 balls

Circular needle and double pointed needles size 3 mm – US 2 or 3 – UK/Canadian 11

+ 6-6-6-7-7-7 buttons

Gauge: 25 sts = approx. 10 cm (4 in) over St st using needles size 3 mm. **Check your gauge to ensure success.**

PATTERN

1st row: (RS) ; K3, * 1 yo , sl 1 st, K1, pssso, K2*, rep *-* until 3 sts rem, 1 yo, sl 1 st, K1, pssso, K1

2nd row: (WS) ; P3, * 1 yo, P2tog, P2*, rep *-* until 3 sts rem, 1 yo, P2tog, P1

CARDIGAN

Using needles size 3 mm, cast on 152-168-180-192-204-212 sts. Work back and forth 3 cm (1.2 in) in St st. When work measures 1 ½ cm (0.6 in) make a buttonhole at right edge: K2, bind off 2 sts, next row: cast on 2 new sts over bound-off sts. When work measures 3 cm (1.2 in), knit 1 row (= WS) = **folding edge (all measurements are given from folding edge)** + 3 cm (1.2 in) in St st with a corresponding buttonhole. Place markers each side 72-80-86-92-98-102 sts for back, and 40-44-47-50-53-55 sts for each front.

Cont working in patt as foll:

Garter st over 5 sts = right front edge, patt until 5 sts rem, Garter st over 5 sts = left front edge. Cont working back and forth, make buttonholes on right front edge every 7.-7 ½.- 8 ½.-7 ½.-8 ½.- 9.cm (2.8-3-3.3-3-3.3-3.5 in). When work measures 23-25-29-33-36-39 cm (9.1-9.8-11.4-13-14.2-15.4 in), bind off each side 6-6-6-8-8-8 sts for armholes = 3-3-3-4-4-4 sts both sides of the markers. Finish back and fronts separately.

Back

Cont working in patt (if number of dec and yo doesn't match, work sts in St st). When work measures the given length, and armhole measures 15-16-17-18-19-20 cm (5.9-6.3-6.7-7.1-7.5-7.9 in), bind off.

Right front

Cont working back and forth in patt and Garter st over front edge sts with buttonholes. When work measures 35-38-43-47-51-55 cm (13.8-15-16.9-18.5-20.1-21.7 in), bind off 14-15-16-18-20-20 sts for neck edge. Cont working in patt, and bind off at neck edge every 2nd row 1x3, 1x2, and 1x1 st = 17-20-22-22-23-25 sts rem. When work measures same as back, bind off or slip sts on holder.

Left front

Work same as for right front, rev all shaping, omitting buttonholes.

Note! ¾-sleeve, long sleeve, or as desired. **Original design in photo is with ¾-sleeve.**

¾ -sleeve: Using needles size 3, cast on 52-54-56-58-60-62 sts.

Long sleeve: Cast on 40-42-44-46-48-50 sts.

Work back and forth 3 cm (1.2 in) in St st – knit 1 row (= WS) = folding edge + 3 cm (1.2 in) in St st.

¾ -sleeve: Knit 1 row, adjusting evenly across the row number of sts to be 66-66-66-70-70-74 sts.

Long sleeve: Knit 1 row, adjusting evenly across the row number of sts to be 54-54-58-58-62-62 sts. Cont working back and forth in patt. Inc 1 st at each edge inside selvage sts. Rep inc every 2 cm (0.8 in) (same for all sizes) until you have 78-82-86-90-94-102 sts on a row. Note! Inc sts are worked in patt if number of sts matches patt report. When work measures

¾-sleeve: 18-21-25-27-30-32 cm (7.1-8.3-9.8-10.6-11.8-12.6 in), measured from **folding edge**, bind off sts.

Long sleeve: approx. 28-31-35-38-42-45 cm (11-12.2-13.8-15-16.5-17.7 in), measured from **folding edge**, bind off sts.

Work same for the other sleeve.

Finishing

Join shoulder seams. Fold lower edge and sleeve edges in double, and sew on WS. Sew sleeve seams.

Neck and

Pick or knit up approx. 88-92-96-106-112-114 sts along neck edge. Work back and forth approx. 3 cm (1.2 in) in St st, but when work measures approx. 1 cm (0.4 in), make 1 buttonhole at right edge.

Knit 1 row (= WS) = folding edge + 3 cm (in) in St st with a corresponding buttonhole. Bind off rather loosely.

Sew on sleeves.

Weave in all ends on WS. Sew 6-6-6-7-7-7 buttons on left front border.

Viking Bjørk

Dress

1203-5

Size :	2	4	6/8	10	12 yrs
Chest:	55	60	65	70	74 cm
	21.7	23.6	25.6	27.6	29.1in
Length	50	53	56	64	68 cm
	19.7	20.9	22	25.2	26.8 in

ALTERNATIVE YARN: Viking Bjørk (90% cotton, 10% merino wool, superwash), Viking Alpaca Silk (50% alpaca, 50% silk), 50 g ball

Violet, 567 4 4 5 5 6 balls

Circular needle and double pointed needles size 2 ½ and 3 mm – US 1 or 2 and 2 or 3 – UK/Canadian 13 or 12 and 11

Gauge: 25 sts = approx. 10 cm (4 in) over St st using needles size 3 mm. **Check your gauge to ensure success.**

Pattern:

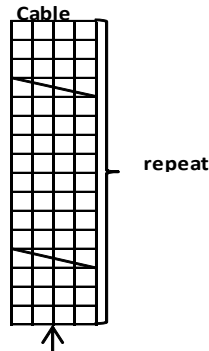
1st rnd: Sl 1st, K1, pssso, K3, 1 yo, K1, 1 yo, K3, and K2tog
2nd rnd: Knit
 Rep 1st and 2nd rnd.

DRESS

Using needles size 2 ½ mm, cast on 222 – 234 – 246 – 258 – 270 sts. Work 10 rnds in Garter st. Change to needles size 3 mm. Place markers each side, 111-117-123-129-135 sts for both back and front. Divide work into 6 panels, with 37 – 39 – 41 – 43 – 45 sts for each panel. Beg from right side marker, and cont working in rnds: Beg from right side, arrow points out where to beg patt, cable patt over 2 sts - *St st over 11 – 12 – 13 – 14 – 15 sts, patt over 11 sts, St st over 11 – 12 – 13 – 14 – 15 sts, and cable patt over 4 sts*, rep *-* 6 times, end rnd with cable patt over 2 sts. Cont working as established, and dec 1 st **each side** of all 6 cables: Work until 2 sts rem before cable, sl 1 st, K1, pssso, cable patt over 4 sts, K2tog (=12 dec on a rnd). Rep dec every 5 – 5 – 5 – 6 – 6 cm (2-2-2-2.4-2.4 in) altog. 7 times, 138 – 150 – 162 – 174 – 186 sts rem on a rnd. When work measures 36 – 38 – 41 – 46 – 49 cm (14.2-15-16.1-18.1-19.3 in), bind off 8 – 8 – 8 – 10 – 10 sts each side (4 – 4 – 4 – 5 – 5 sts both sides of the sidemarkers). Cast on 51 – 55 – 61 – 65 – 71 sts over the sts bound-off for armholes. Place markers around mid sts of both sleeves, and at each seamline. You have now 224 – 244 – 268 – 284 – 308 sts on a rnd. Cont working in rnds, and patt as established over front and back, 1 cable over 4 sts at each 4 seamline, and one patt stripe over 11 sts mid sleeve. Beg raglan-dec at each 4 seamline on 2nd rnd: Work until 2 sts rem **before** cable, K2togtbl, cable patt over 4 sts, K2tog. Rep dec every

2nd rnd altog. 16 – 18 – 20 – 22 – 24 times, 96 – 100 – 108 – 108 – 116 sts rem. Knit 2 rnds. Change to needles size 2 ½ mm. Work 6 rnds in Garter st. Bind off.

Armhole edges: Using needles size 2½ mm, pick or knit up 58 – 62 – 68 – 74 – 80 sts. Work 10 rnds in Garter st. Bind off.



Beg here, right side
= marker for seamline of raglan-dec

□ = knit

▧ = Sl 2 sts on cn, hold to front, K2, knit sts from cn

Viking Bjørk

Tunic, shorts and bolero 1203-6

Size	2	4/6	8	10 yrs
TUNIC				
Chest	52	58	62	67 cm
	20.5	22.8	24.4	26.4 in
Length	48	56	60	65 cm
	18.9	22	23.6	25.6 in
SHORTS				
Hips	63	70	74	77 cm
	24.8	27.6	29.1	30.3 in
Leg length	17	23	26	30 cm
	6.7	9.1	10.2	11.8 in
BOLERO	4/6 yrs	8/10 yrs		
Sleeve length	9	11		cm
	3.5	4.3		in
Length	22	26		cm
	8.7	10.2		in
Chest	68	78		cm
	26.8	30.7		in

ALTERNATIVE YARN: Viking Bjørk (90% cotton, 10% merino wool, superwash), Viking Alpaca Silk (50% alpaca, 50% silk), 50 g ball

TUNIC

Light Grey, 513	3	4	4	5 balls
Off-White, 502	1	1	1	1 ball
Dark Grey, 515	1	1	1	1 ball
Dark Violet, 569	1	1	1	1 ball
Light Violet, 567	1	1	1	1 ball

SHORTS

Light Grey, 513	3	4	4	5 balls
Off-White, 502	1	1	1	1 ball
Dark Green, 515	1	1	1	1 ball
Dark Violet, 569	1	1	1	1 ball
Light Violet, 567	1	1	1	1 ball

BOLERO

Dark Violet, 569	3	4 balls
------------------	---	---------

Double pointed needles and circular needle size 3 mm – US 2 or 3 – UK/Canadian 11

Crochet hook size 3 mm – US C/2 or D/3 – UK/Canadian 11
+ 2 buttons for tunic, silkband for bolero

Gauge 25 sts = approx. 10 cm (4 in) over St st using needles size 3 mm. **Check your gauge to ensure success.**

TUNIC

Using needles size 3 mm and light grey yarn, cast on 156-172-190-206 sts. Work in rnds 3-4-4-5 cm (1.2-1.6-1.6-2 in) in St st. Work an eyelet rnd: *K2tog, 1 yo*, rep *-* across the rnd = folding edge. Cont working in St st, until work measures 12-14-15-16 cm (4.7-5.5-5.9-6.3 in), measured from **folding edge**. Place markers each side, 78-86-95-103 sts for both back and front. Dec 2 sts at each side as foll: Knit until 3 sts rem before a marker, K2togtbl, K2, K2tog. Rep dec every 3 cm (1.2 in) altog. 6-7-8-9 times = 132-144-158-170 sts. When work measures 35-41-44-48 cm (13.8-16.1-17.3-18.9 in) (measured from folding edge), knit 1 rnd, adjusting evenly across the rnd number of sts to be 130-144-156-168 sts. Place new markers at sides with 65-73-79-85 sts for front, and 65-71-77-83 sts for back. Bind off 8 sts both sides for armholes = 4 sts both sides of the markers. Finish each side separately.

Back

Cont working back and forth in St st. Bind off at each edge every 2nd row 1x2, and 1x1 st = 51-57-63-69 sts. Cont working in St st until armhole measures 3-5-5-6 cm (1.2-2-2-2.4 in). Work in patt as charted (Check from mid st where to beg patt = mid back). Cont working in St st with light grey yarn until work measures the given length, and armhole measures 13-15-16-17 cm (5.1-5.9-6.3-6.7 in). Bind off 25-25-27-29 mid sts. Slip rem 13-16-18-20 sts on holders (= shoulders).

Shoulderstraps

Cont working back and forth in St st with light grey yarn over 13-16-18-20 shoulder sts, **but** inc 1-2-2-2 sts evenly across 1st row = 14-18-20-22 sts. When strap measures 6-7-8-9 cm (2.4-2.8-3.1-3.5 in), make a buttonhole. Bind off 4 mid sts, next row: cast on 4 sts over the bound-off sts. Bind off 1 st beg of each row until 6-8-10-12 sts rem. Bind off sts knitwise on WS.

Work same for the other shoulderstrap.

Front

Work same as for back. Cont working in St st and in patt same as for back (Note! Check from mid st where to beg patt). Work 2 cm (0.8 in) in St st with light grey yarn until armhole measures 10-12-12-13 cm (4-4.7-4.7-5.1 in). Bind off purlwise 13-15-17-19 mid sts. Finish each side separately. Bind off at neck edge every 2nd row 1x3, 1x2, and 1x1 st. When work measures same as back, bind

off purlwise rem 13-16-18-20 sts. Work same for the other side, rev all shaping.

Crochet edge

Using crochet hook size 3 mm and light grey yarn, crochet a picot edge around neck edge, both shoulderstraps, and armholes. Beg from one armhole. Work back and forth 2 rows in sc. RS-row: *Ch3, 1 sc to 1st ch, skip 1 st, 1 sc to next st*, rep *-* across the row. Break yarn, and draw through the loop. Weave in all ends on WS. Sew seam mid under armhole.

Finishing

Fold lower edge in double, and sew on WS.
Sew 2 buttons on front.

SHORTS

Beg from waist.

Using needles size 3 mm and light grey yarn, cast on 148-160-172-180 sts. Work 6-7-7-8 cm (2.4-2.8-2.8-3.1 in) in K2,P2 rib. Knit 1 rnd, adjusting evenly across the rnd number of sts to be 158-174-186-194 sts. Place markers each side, 79-87-93-97 sts for back and front. Place markers mid front and back. Work short rows, beg mid back: K12-13-13-12, turn, P25-27-25-27. Turn, work 9-10-11-12 sts more after each turning. Turn altog 8 times (4 times at each side). Cont working in rnds in St st over all sts. When work measures 20-21-22-23 cm (7.9-8.3-8.7-9.1 in), measured from cast-on edge, inc 1 st both sides of mid front and back. Rep inc every 2nd rnd 8-8-9-9 times = 190-206-222-230 sts.

Finish each leg separately.

Using another circular needle, knit sts from mid front until mid back = 95-103-111-115 sts. Place a marker beg of rnd = inner seam of leg. Cont working in rnds in St st until leg measures approx. 9-15-18-22 cm (3.5-5.9-7.1-8.7 in) (or 8 cm (3.1 in) less than the desired length). Beg from the side marker, and check from mid st where to beg patt. Work patt as charted. Work 3 cm (in) in St st with light grey yarn. Work an eyelet rnd (same as for tunic), and end with 3 cm (1.2 in) in St st. Bind off.

Work same for the other leg.

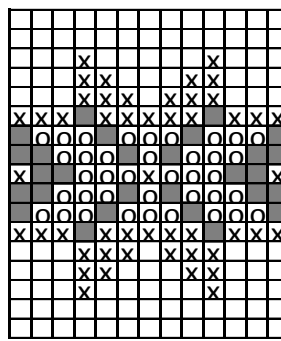
Weave in all ends on WS.

Finishing

Fold waistline rib in double, and sew on WS.

Fold leg edges in double, and sew on WS.

Thread elastic on waist.



- = off-white
- ⊗ = dark violet
- = light violet
- = dark grey

mid back, front, and leg

CROCHETED BOLERO (size 4/6 and 8/10 yrs)

Worked in 3 pieces, back with both sleeves, and 2 front pieces with 1 sleeve each,

RIGHT FRONT WITH SLEEVE

Beg from **right front** Using crochet hook size 3 mm, and dark violet yarn, ch68-86.

1st row: 1 dc to 7th ch-st from the hook, *ch2, skip 2 ch-sts, 1 dc to 3.ch-sts*, rep *-* across the row (= 21-27 squares)

2nd row: Turn, ch4, *1 dc to ch-space, ch2*, rep *-* across the row, end with 1dc to last ch-space.

Rep 2nd row until work measures approx. 17-19 cm (6.7-7.5 in).

Cont working for the **sleeve** as foll: Work 17-19 squares (1.square = 4 first ch-sts) (= upper part of front piece), turn, and cont working back and forth over these squares = width of sleeve. When sleeve measures approx. 9-11cm (3.5-4.3 in) (or desired length), break yarn, and weave in on WS.

Work same for **left front**.

BACK WITH SLEEVES

Beg from one sleeve, cont working over back, and end with the other sleeve.

Using crochet hook size 3 mm and dark violet yarn, ch56-62. Work 1st row 1 (= 17-19 squares), and cont working back and forth repeating 2nd row until sleeve measures same as front. Ch16-28 for **back**. Turn, beg from 7th ch-st from the hook, and work as **1st row over all ch-sts**, and cont as 2nd row over rem sts.

Cont working back and forth repeating 2nd row until back measures 34-39 cm (13.4-15.4 in) (measured from new ch-sts= beg of back).

Cont working over 17-19 squares for the other sleeve. When sleeve measures approx. 9-11 cm (3.5-4.3 in), break yarn.

Weave in all ends on WS

Finishing

Sew side and sleeve seams together with shoulder seams. Leave an opening for neck edge, approx, 17-18 cm (6.7-7.1 in) (= 8 ½-9cm (3.3-3.5 in) both fronts)

Thread a silkband along neck edge.

Viking Bjørk

Tunic, leg warmers and scarf 1203-7

Size	2	4/6	8	10 yrs
Chest	52	57	62	66 cm
	20.5	22.4	24.4	26 in
Length	48	56	61	67 cm
	18.9	22	24	26.4 in
Length, scarf	100	120	135	150 cm
	39.4	47.2	53.2	59.1 in

ALTERNATIVE YARN: Viking Bjørk (90% cotton, 10 % merino wool, superwash), Viking Alpaca Silk (50% alpaca, 50% silk), 50 g ball

TUNIC

Beige, 507	4	5	5	6 balls
White, 500	1	1	2	2 balls
Pink, 564	1	1	1	1 ball

LEG WARMERS AND SCARF

Beige, 507	2	2	2	3 balls
White, 500	2	2	2	3 balls
Pink, 564	2	2	2	3 balls

Double pointed needles and circular needle size 2 ½ and 3 mm – US 1 or 2 and 2 or 3 – UK/Canadian 13 or 12 and 11

Gauge: 25 sts = approx. 10 cm (4 in) over St st using needles size 3 mm. **Check your gauge to ensure success.**

TUNIC

Using circular needle size 2 ½ and white yarn, cast on 180-198-214-228 sts. Work in rnds 3-4-4-5 cm (1.2-1.6-1.6-2 in) in St st, knit 1 rnd from WS = folding edge + 3-3-4-4-5 cm (1.2-1.6-1.6-2 in) in St st. Change to needles size 3 mm and beige yarn. Cont working in St st until work measures 35-41-44-48 cm (13.8-16.1-17.3-18.9 in) (or desired length before armhole). Knit 1 rnd, adjusting evenly across the rnd number of sts to be 158-170-186-194 sts. Place markers each side, 79-85-93-97 sts for both front and back. Bind off 8 sts for armholes at each side = 4 sts both sides of the markers. Finish back and front separately.

Back

Cont working back and forth in St st. Bind off at each edge every 2nd row 1x2, and 1x1 st. When work measures the given length, and armhole measures 13-15-17-19 cm (5.1-5.9-6.7-7.5 in), bind off sts, or slip them on holder.

Front

Work same as for back. When armhole measures 4-5-6-6 cm (1.6-2-2.4-2.4 in), bind off 7 mid sts for a split = 29-32-36-38 sts rem for each side. Finish both sides separately.

Right front: Cont working back and forth in St st. When armhole measures 10-12-13-13 cm (4-4.7-5.1-5.1 in), bind off for neck edge every 2nd row 1x10-11-12-13, 1x3, 1x2, and 1x1 st = 13-15-18-19 sts rem for shoulder. When work measures same as back, bind off sts, or slip them on holder.

Left front: Work same as for right front, rev all shaping.

Finishing

Join shoulder seams.

Neck band

Beg mid front (upper edge of the split) of right front, using needles size 2½ and white yarn, pick or knit up approx. 72-76-80-84 sts .

Work back and forth in St st. Place 5 markers across the row (1 marker on each front, 1 on each shoulder, and 1 mid back). When neck band measures 2-2-3-3cm (0.8-0.8-1.2-1.2 in), dec 1 st at each marker. When neck band measures 3-3-4-4 cm (1.2-1.2-1.6-1.6 in), knit 1 row from WS = **folding edge**. Work 3-3-4-4 cm (1.2-1.2-1.6-1.6 in) in St st, **and** inc 1 st at each marker when neck band measures 1 cm (0.4 in), **measured from folding edge**. Bind off rather loosely.

Fold neck edge in double, and dampen slightly. Sew on WS.

Split edges

Beg from right lower edge of the split, using needles size 2½ mm and white yarn, pick or knit up approx. 24-24-27-27 sts. Work back and forth in St st, **but** when work measures 1 ½ cm (0.6 in), make 2 buttonholes: K6-6-7-7, bind off 3 sts (= buttonhole, next row: cast on 3 new sts over the bound-off sts), rep 1 more time, and end with 6-6-7-7 sts. Cont working in St st until edge measures 3 cm (1.2 in). Knit 1 row from WS = folding edge +3 cm (1.2 in) in St st (Note! Make the buttonholes). Bind off rather loosely.

Work same for the other edge, but without buttonholes.

Fold edges in double, dampen slightly. Place edges on top of each other, buttonhole edge on top, and sew short edges to split bottom. Sew small sts around buttonholes.

Armhole borders

Beg mid under arm, using needles size 2½ mm and white yarn, pick or knit up approx. 72-84-92-100 sts. Work in rnds same as for neck band. Place markers on shoulder, and 2 along each side. Dec and inc same as for neck band.

Work same for the other armhole border. Fold borders in double, and sew on WS.

Weave in all ends on WS.

Pockets

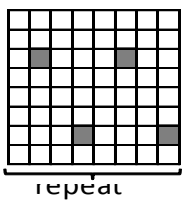
Using needles size 3 mm and pink yarn, cast on 25-25-29-29 sts. Work back and forth in St st and patt as charted.

When work measures 8-9-9-10 cm (3.1-3.5-3.5-4 in), work 2 cm (0.8 in) in K1,P1 rib with pink yarn. Bind off rather loosely.

Work same for the other pocket.

Weave in all ends on WS. Sew pockets close to the hemline.

Fold lower edge border in double, dampen slightly, and sew on WS.



□ = pink (white for teddy's tunic)
 ■ = white (pink for teddy's tunic)

Leg warmers

Beg from upper edge.

Using needles size 2½ mm and white yarn, cast on 52-58-62-66 sts. Work back and forth 6-6-8-8 cm (2.4-2.4-3.1-3.1 in) in K1,P1 rib = tunnel. Knit 1 rnd, adjusting evenly across the rnd number of sts to be 56-60-64-68 sts. Divide sts on 4 dpn size 3 mm. Rnd begins from the inner seam, and opening for the tunnel is on the other side = mid rnd. Cont working in St st with stripes as foll: *3 rnd in beige, 3 rnds in white*, rep *-* until stripe patt measures 12-14-16-18 cm (4.7-5.5-6.3-7.1 in) (end with white stripe). Cont working in patt as charted until work measures approx. 20-24-28-32 cm (7.9-9.4-11-12.6 in) (measured from beg of stripe patt). Knit 1 rnd, and dec evenly across the rnd number of sts to be 46-50-52-54 sts.

Change to needles size 2½ mm and white yarn. Knit 1 rnd. Work 3-3-4-4 cm (1.2-1.2-1.6-1.6 in) in K1,P1 rib. Bind off in rib. Work same for the other leg warmer.

Weave in all ends on WS.

Fold upper rib edge in double, and sew on WS.

Twist 2 cords using beige yarn, and thread through the tunnels.

Make 4 tassels/pom-poms using beige yarn, diameter approx. 4 cm (1.6 in). Fasten 1 tassel to each end of both cords.

Scarf

Use a long circular needle to fit in all sts.

Using needles size 3 mm and beige yarn, cast on 250-300-338-375 sts.

Work back and forth 4 rows in Garter st. Cont working in Garter st with stripes as foll: *2 rows in pink, 2 rows in white, 2 rows in beige*, rep *-* until work measures approx. 16-18-20-22 cm (6.3-7.1-7.9-8.7 in), end with 2 rows in pink, and 2 rows in white.

Change to beige yarn, and work 4 rows in Garter st. Bind off on RS row (not too loosely).

Crochet 1 row sc to each side using beige yarn to cover the changing of clr.

Make 3 or 5 small pompoms using different clr, and attach to each end (size and number of pompoms as desired).

You can also tie fringes to the ends instead of pompoms.

TUNIC AND LEG WARMERS FOR TEDDY BEAR (42 cm (in) long)

Chest	42 cm
	16.5 in
Length, approx.	24 cm
	9.4 in
Sleeve, width, approx.	9 cm
	3.5 in

Pink, 564	2 balls
Beige, 507	1 ball
White 500	1 ball

TUNIC

Using needles size 2½ mm and beige yarn, cast on 155 sts. Work back and forth 2 cm (0.8 in) in St st Knit 1 row from WS = folding edge. Cont working in St st for another 2 cm (0.8 in). Change to needles size 3 mm. Cont working in rnds in St st. When work measures 15 cm (5.9 in), measured from folding edge, dec evenly across the rnd number of sts to be 105 sts. Place markers each side, 53 sts for front, and 52 sts for back. Bind off 8 sts at each side = 4 sts each side of both markers.

Finish back and front separately.

Back

Cont working back and forth in St st. Bind off at each edge every 2nd row 1x2, and 1x1 st. When work measures the given length, and armhole measures 9 cm (3.5 in), bind off, or slip sts on holder.

Front

Work same as for back. When armhole measures 3 cm (1.2 in), bind off for split 7 mid sts = 16 sts rem on both sides. Finish each side separately.

Right front

Cont working back and forth in St st. When work measures 21 cm (8.3 in), bind off for neck edge every 2nd row 1x4, 1x3, 1x2, and

1x1 st = 6 sts rem for shoulder. When work measures same as back, bind off sts, or slip on holder.

Work same for **left front**, rev all shaping.

Finishing

Join shoulder seams.

Fold lower edge in double, and sew on WS to form a tunnel.

Neck band

Using needles size 2½ mm and beige yarn, pick or knit approx. 56 sts along neck edge, beg from split edge. Work back and forth 2 cm (0.8 in) in St st. Knit 1 row from WS (= folding edge) + 2 cm (0.8 in) St st. Bind off rather loosely.

Fold neck band in double, and sew on WS.

Split edges

Using needles size 2½ and beige yarn, pick or knit up approx. 16 sts, beg from right edge of the split (pick sts also from neck band). Work 3 rows in St st. Next row: K4, bind off 2 sts (= buttonhole, next row: cast on 2 new sts over the bound-off sts), K4, buttonhole, K4. Work 4 rows in St st, knit 1 row from WS (= folding edge), 3 rows in St st, next row: P4, buttonhole, P4, buttonhole, P4, and end with 4 rows in St st. Bind off.

Work same for left edge, but without buttonholes: 8 rows in St st, 1 purl row, 8 rows in St st. Bind off.

Fold edges in double, and sew on WS.

Place buttonhole edge on top of button edge, and sew the lower edges to the bottom of the split. Sew small sts around buttonholes.

Armhole borders

Using needles size 2½ mm and beige yarn, pick or knit up approx 56 sts along armhole. Work 6 rnds in St st, purl 1 rnd (= folding edge), + 6 rnds in St st. Bind off rather loosely.

Fold edge in double, and sew on WS.

Weave in all ends on WS.

Pockets

Using needles size 3 mm and white yarn, cast on 19 sts.

Work back and forth in St st and patt as charted. Rep patt report altogether twice. Work r rows in K1,P1 rib. Bind off rather loosely.

Work same for the other pocket. Weave in all ends on WS.

Sew pockets close to the hemline.

Sew on buttons. Twist a cord using pink yarn, and make 2 pompoms (diameter approx. 4 cm (1.6 in)). Thread cord into the hemline tunnel, and fasten a pompom to each end of the cord. Pull the cord slightly, and tie a bow.

LEG WARMERS

Using needles size 2½ mm and white yarn, cast on 48 sts. Work 4 rnds in K1,P1 rib. Change to needles size 3 mm and pink yarn.

Cont working in St st with stripes as foll: 3 rnds in pink, 3 rnds in beige, 3 rnds in pink, 3 rnds in beige, 3 rnds in pink. Change to needles size 2 ½ mm. Knit 1 rnd with white yarn. Cont working with white yarn, 4 rnds in K1,P1 rib. Bind off.

Work same for the other leg warmer.

Weave in all ends on WS.

Viking Bjørk

Tunic

1203-8

Size:	2/4	6	8	10/12 yrs
Chest, approx:	57	61	66	70 cm
	22.4	24	26	27.6 in
Length, approx:	52	56	60	65 cm
	20.5	22	23.6	25.6 in

ALTERNATIVE YARN: Viking Bjørk (90% cotton, 10% merino wool, superwash), Viking Alpaca/Silk (50% alpaca, 50% silk), 50 g ball

Orange, 551	1	1	1	1 ball
Dark Violet 569	2	2	3	3 balls
Light Grey, 513	2	3	3	4 balls
+ Mint Green, 527 – Cherry, 563 for flowers (use some rest yarns).				

Circular needle and double pointed needles size 3 mm – US 2 or 3 – UK/Canadian 11

Gauge: 25 sts = approx. 10 cm (4 in) over St st using needles size 3 mm. **Check your gauge to ensure success.**

TUNIC

Using circular needle size 3 mm and orange yarn, cast on 220-224-248-260 sts. Work in rnds 3 cm (1.2 in) in K2,P2 rib. Knit 1 rnd, adjusting evenly across the rnd number of sts to be 218-224-246-258 sts. Cont working in rnds in St st with stripes as foll: *8 rnds in dark violet – 8 rnds in light grey*, rep *-* until the end. Place markers each side, 109-112-123-129 sts for both front and back.

Cont working in St st, and dec 1 st both sides of the markers, **before** the markers: S1 1 st, K1, pssso, **after** the markers: K2tog. Rep dec every 6th rnd altog. 19-18-20-21 times = 142-152-166-174 sts rem. Cont working without dec until work measures approx. 38-41-44-48 cm (15-16.1-17.3-18.9 in) (or desired length). Bind off 12 sts at each edge for armholes (6 sts both sides of each marker). Finish back and front separately.

Back

Cont working back and forth in St st with stripes. Bind off at each edge every 2nd row 1x2, and 1x1 st (same for all sizes). Cont working until work measures 52-56-60-65 cm (20.5-22-23.6-25.6 in), and armhole measures 14-15-16-17 cm (5.5-5.9-6.3-6.7 in). Bind off.

Front

Work same as for back. When work measures approx. 46-49-53-58 cm (18.1-19.3-20.9-22.8 in), bind off for neck edge 15-16-17-19 mid sts. Work each side separately. Bind off at neck edge every 2nd row 1x4, 1x3, 2x2, and 1x1 st (same for all sizes). = 7-9-12-13 sts rem for shoulder. When work measures same as back, bind off. Work same for the other side, rev all shaping.

Sleeves

Using needles size 3 mm and orange yarn, cast on 68-76-80-84 sts. Work in rnds 3 cm (1.2 in) in K2,P2 rib. Cont working in rnds in St st with stripes (see body). When work measures approx. 9-10-11-12 cm (3.5-4-4.3-4.7 in), bind off 12 sts mid under arm (6 sts both sides of the marker). Cont working back and forth, and bind off beg of each row 1x2, and 1x1 st. Bind off rem sts.

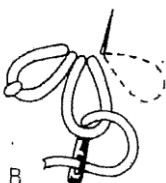
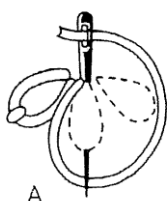
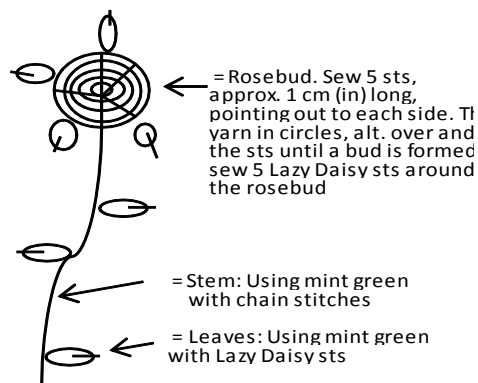
Work same for the other sleeve.

Finishing

Join shoulder seams.

Neck band: Using needles size 3 mm and orange yarn, pick or knit up approx. 96-104-112-116 sts. Work in rnds 3 cm (1.2 in) in

K2,P2 rib. Bind off rather loosely in rib.
Sew on sleeves, and weave in all ends on WS.
Sew flowers across the lower edges of body and sleeves, see sketches.



Mille-Fleur-sting
Tre eller flere kjedesting syes fra samme punkt, slik at det dannes en blomst.

Lazy Daisy stitch
3 or more ch sts worked in circle to form a flower

Viking Bjørk

Cardigan, tunic and hat 1203-9

Size: 2 4 6 8 10/12 yrs

CARDIGAN

Chest, approx:	60	65	70	75	80	cm
	23.6	25.6	27.6	29.5	31.5	in
Length, approx:	31	35	40	45	51	cm
	12.2	13.8	15.7	17.7	20.1	in
Sleeve length:	6	7	8	9	10	cm
	2.4	2.8	3.1	3.5	4	in

TUNIC

Size:	2/4	6	8	10/12 yrs	
Chest, approx:	57	61	66	70	cm
	22.4	24	26	27.6	in
Length, approx.	52	56	60	65	cm
	20.5	22	23.6	25.6	in

ALTERNATIVE YARN: Viking Bjørk (90% cotton, 10% merino wool, superwash), Viking Alpaca/Silk (50% alpaca, 50% silk), 50 g ball

CARDIGAN AND HAT

Light Grey, 513	3	4	4	5	6	balls
Light Pink, 565	1	1	1	1	1	ball

TUNIC

Light Pink, 565	4	4	5	5	6	balls
-----------------	---	---	---	---	---	-------

Circular needle and double pointed needles size 3 mm – US 2 or 3 – UK/Canadian 11
+ crochet hook size 2 ½ mm – US B/1 or C/2 – UK/Canadian 12
+ 1 small hook

Gauge: 25 sts = approx. 10 cm (4 in) over St st using needles size 3 mm. Check your gauge to ensure success.

Selvage stitch: Knit first and last st every row.

CARDIGAN

Using needles size 3 mm and pink yarn, cast on 149-161-173-185-197 sts. Work back and forth 3 cm (1.2 in) in St st inside selvages sts. Next row: *K2tog, 1 yo*, rep *-* across the row = folding edge. Change to grey yarn, and cont working back and forth in St st until work measures approx. 18-21-24-28-33 cm (7.1-8.3-9.4-11-13 in) (measured from folding edge). Place markers each side, 77-83-89-95-101 sts for back, and 36-39-42-45-48 sts for each front. Cont working back and forth in patt as charted. When work measures approx. 19-22-26-30-35 cm (7.5-8.7-10.2-11.8-13.8 in), measured from folding edge, bind off 10 sts each side (5 sts both sides of the markers). Finish each side separately.

Back

Cont working back and forth in patt. Bind off at each edge every 2nd row 1x3, 1x2, and 1x1 st (when the number of sts doesn't fit the motif, work extra sts in St st). When work measures 31-35-40-45-51 cm (12.2-13.8-15.7-17.7-20.1 in), measured from folding edge, and armhole measures approx. 12-13-14-15-16 cm (4.7-5.1-5.5-5.9-6.3 in), bind off.

Right front

Cont working back and forth in patt as charted. Work same as for back. When work measures approx. 27-30-35-40-45 cm (10.6-11.8-13.8-15.7-17.7 in), bind off at neck edge every 2nd row 1x10-11-13-14-15, 1x3 m 1x2, and 1x1 st = 9-11-12-14-16 sts rem for shoulder. When work measures same as back, bind off.

Work same for left front, rev all shaping.

Sleeves

Using needles size 3 mm and pink yarn, cast on 44-48-54-58-64 sts. Work 3 cm (1.2 in) in St st. Next rnd: *K2tog, 1 yo*, rep *-* across the rnd. Change to grey yarn, and work 3 cm (1.2 in) in St st. Knit 1 rnd, and inc evenly across the rnd number of sts to be 54-60-70-74-80 sts. Cont working in rnds in St st until work measures approx. 6-7-8-9-10 cm (2.4-2.8-3.1-3.5-4 in). Bind off 10 sts mid under arm (5 sts both sides of the marker). Cont working back and forth, and bind off beg of each row 1x3, 1x2, and 1x1st. Bind off rem sts.

Work same for the other sleeve.

Finishing

Join shoulder seams.

Neck band: Using needles size 3 mm and grey yarn, pick or knit up 89-97-105-111-117 sts. Work back and forth 2 cm (0.8 in) in St st. 2 cm. Change to pink yarn, and work next row as foll: *K2tog, 1 yo*, rep *-* across the row + 2 cm (0.8 in) in St st with pink yarn. Fold neck band in double, and sew on WS.

Front borders: Using needles size 3 mm and grey yarn, pick or knit up approx. 73-81-93-105-115 sts. Work same as for neck band. Work same for the other front border.

Crochet flowers

Using crochet hook size 2½ mm, ch4, join into ring with 1 sl st.

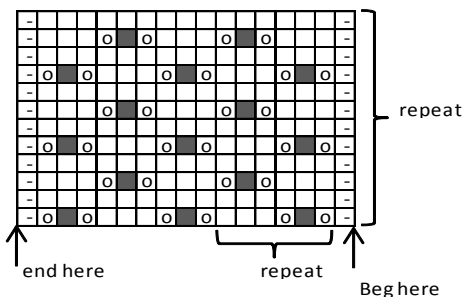
1st rnd: Ch1 (= 1 sc), 4 sc into ring, end with 1 sl st to 1st ch-st beg

of rnd = 5 sc

2nd rnd: *Ch4, 1 dc to first of the 4 ch-sts, 1 sc to next st*, rep *-* altog.5 times, end with 1 sl st to prev. rnd's sl st (instead of 1 sc to next st) = 5 petals. Sew on sleeves, and weave in all ends on WS. Fold all borders in double, and sew on WS.

HAT (2/4 – 6/8 – 10/12 yrs)

Using needles size 3 mm and pink yarn, cast on 104-112-120 sts. Work same for the border as for sleeves. Knit 1 rnd, inc evenly across the rnd number of sts to be 120-132-144 sts. Cont working in rnds in patt as charted (without selvage sts, as hat is worked in rnds). When work measures approx. 18-20-22 cm (7.1-7.9-8.7 in), beg crown dec: Work every 2nd patt rnd without yarn-overs. When 40-44-48 sts rem, knit all sts tog in pairs. Break yarn, thread through rem sts, pull tightly, and weave in on WS.



- = K on RS, P on WS
- = 1 yo
- = sl 1 st, K2tog, pssso
- = selvage st (knit every row).

TUNIC

Using needles size 3 mm and pink yarn, cast on 218-224-246-258 sts. Work in rnds 3 cm (1.2 in) in St st. Next rnd: *K2tog, 1 yo*, rep *-* across the rnd = folding edge. Cont working in rnds in St st. Place markers each edge, 109-112-123-129 sts for both front and back. Cont working in rnds in St st. Dec 1 st both sides of the markers every 6th rnd altog. 19-18-20-21 times = 142-152-166-174 sts on a rnd. Work without dec until work measures approx. 40-43-46-50 cm (15.7-16.9-18.1-19.7 in) (measured from folding edge), bind off for armhole 12 sts at each edge (6 sts both sides of the markers). Finish back and front separately.

Back

Cont working back and forth in St st. Bind off at each edge every 2nd row 1x2, and 1x1 st (same for all sizes). When work measures 52-56-60-65 cm (20.5-22-23.6-25.6 in), and armhole measures 12-13-14-15 cm (4.7-5.1-5.5-5.9 in), bind off..

Front

Work same as for ack. When work measures approx. 46-49-53-58 cm (18.1-19.3-20.9-22.8 in), bind off for neck edge 15-16-17-19 mid sts. Finish each side separately. Bind off at neck edge every 2nd row 1x4, 1x3, 2x2, and 1x1 st (same for all sizes) = 7-9-12-13 sts rem for shoulder. When work measures same as back, bind off. Work same for the other side, rev all shaping.

Finishing

Join shoulder seams.

Neck band: Using needles size 3 mm and pink yarn, pick or knit up approx. 98-104-108-116 sts. Work in rnds 2 cm (0.8 in) St st. Next rnd: *K2tog, 1 yo*, rep *-* across the rnd. Work 2 cm (0.8

in) in St st, and bind off rather loosely. Fold neck band in double, and sew on WS.

Armhole borders: Using needles size 3 mm and pink yarn, pick or knit up approx. 60-64-70-76 sts around the armhole. Work same as for neck band. Bind off, and fold border in double and sew on WS. Weave in all ends on WS.

Viking Bjørk Cardigan and shorts

1203-10

Size	2	4	6	8	10	12 yrs
CARDIGAN						
Chest	61	67	73	78	83	86 cm
	24	26.4	28.7	30.7	32.7	33.9 in
Length	38	43	48	52	56	60 cm
	15	16.9	18.9	20.5	22	23.6 in
Sleeve length	12	14	15	16	17	18 cm
	4.7	5.5	5.9	6.3	6.7	7.1 in
SHORTS						
Hips	63	66	69	74	77	80 cm
	24.8	26	27.2	29.1	30.3	31.5 in
Leg length	17	20	23	26	30	34 cm
	6.7	7.9	9.1	10.2	11.8	13.4 in

ALTERNATIVE YARN: Viking Bjørk (90 % cotton, 10% merino wool, superwash), Viking Alpaca Silk (50% alpaca, 50% silk)

CARDIGAN

Beige, 507 44 5 5 6 6 balls
Light Pink, 565 2 3 3 3 3 4 balls

TROUSERS

Beige, 507 3 3 4 4 5 5 balls
Pink, 565 1 1 1 1 2 2 balls

Circular needle and double pointed needles size 2½ and 3 mm – US 1 or 2 and 2 or 3– UK/Canadian 13 or 12 and 11

Crochet hook size 2 ½ mm – US B/1 or C/2 – UK/Canadian 12 + elastic for shorts

Gauge: 25 sts = approx. 10cm (4 in) over St st using needles size 3mm. **Check your gauge to ensure success.**

Lace patt over 25 sts:

1st rnd: P6, K6, 1 yo, K1, 1 yo, K6, P6

2nd rnd: P5, K2tog, K5, 1 yo, K3, 1 yo, K5, K2togtbl, P5

3rd rnd: P4, K2, K5, 1 yo, K5, 1 yo, K5, K2togtbl, P4

4th rnd: P3, K2tog, K5, 1 yo, K7, 1 yo, K5, K2togtbl, P3

5th rnd: P2, K2tog, K5, 1 yo, K9, 1 yo, K5, K2togtbl, P2

6th rnd: P1, K2tog, K21, K2togtbl, P1

Rep 1st-6th rnds 6 Note: Inc 2 sts on 1st rnd (= 2 yo), and dec them on 6th rnd (= 2 x 2 sts tog)

CARDIGAN

Using needles size 3 mm and beige yarn, cast on 4 sts. Purl 1 row. Cont working back and forth in St st, and M1 at each edge inside

selvage sts **beg and end of each RS row** = 2 sts each RS row. Rep inc until you have 76-84-92-98-104-108 sts on a row. Place a marker (all measures are taken from here). Cont inc same as before until you have 152-168-184-196-208-216 sts on a row. Place markers each side, 76-84-92-98-104-108 sts for back, and 38-42-46-49-52-54 sts for each front. Cont working in St st until work measures 23-27-31-34-37-40 cm (9.1-10.6-12.2-13.4-14.6-15.7 in) (or desired length before armhole). Bind off for armhole 6-8-8-10-10-10 sts each side = 3-4-4-5-5-5 sts both sides of the markers. Finish back and fronts separately.

Back

Cont working back and forth in St st. Bind off at each edge every 2nd row 1x2, and 1x1 st. When work measures the given length, and armhole measures 15-16-17-18-19-20 cm (5.9-6.3-6.7-7.1-7.5-7.9 in), bind off rem sts or slip them on holder.

Right front

Work same as for back. When work measures 34-39-44-48-51-55 cm (13.4-15.4-17.3-18.9-20.1-21.7 in), bind off for neck edge 13-13-14-15-17-18 sts. Bind off at neck edge every 2nd row 1x3, 1x2, and 1x1 st = 13-16-19-20-21-22 sts rem. When work measures same as back, bind off rem sts or slip them on holder.

Left front

Work same as for right front, rev all shaping.

Sleeves

Using needles size 2½ mm and beige yarn, cast on 65-69-73-79-81-85 sts. Work in rnds 2-2-3-3-3-3 cm (0.8-0.8-1.2-1.2-1.2-1.2 in) St st. Next rnd: *K2tog, 1 yo*, rep *-* across the rnd, end with K1. + work 2-2-3-3-3-3 cm (0.8-0.8-1.2-1.2-1.2-1.2 in) in St st. Change to pink yarn, and needles size 3 mm. Place a marker around mid st. Knit 1 rnd. Cont as foll: K20-22-24-27-28-30, Lace patt over 25 sts, K20-22-24-27-28-30. Cont working as established, and inc 1 st beg and end of the rnd every 2 cm (0.8 in) until you have 75-81-85-91-95-101 sts on a rnd. When work measures 12-14-15-16-17-18 cm (4.7-5.5-5.9-6.3-6.7-7.1 in) (or desired length) measured from folding edge, bind off 6-8-8-10-10-10 sts mid under arm. Cont working back and forth in St st and Lace patt. Bind off beg of each row 1x2, and 1x1 st (Note! WS-rows: Knit all k-sts, and purl all p-sts). Bind off rather loosely. Work same for the other sleeve.

Finishing

Sew shoulder seams. Weave in all ends on WS.

Make a tassel using pink yarn, and attach to the tail on the back.

Abbreviations:

ch = chain stitch, **sc** = single crochet, **sl st** = slip st, **dc** = double crochet, **ch-space** = chain space
Picot = Ch3, 1 dc to 1st ch-st, skip 1 st, 1 sc to next st.

Crochet edge

Beg from upper edge of left front, **1st row**: Using crochet hook size 2½ mm and beige yarn, work sc around all edges, ending on right front. **2nd row**: Turn, work a picot row along all edges, with a double picot end of each front (where inc beg), and to mid back. Break yarn, and draw through the loop, and weave in on WS.

Neck band

Using needles size 2½ mm and beige yarn, pick or knit up 98-102-108-114-120-124 sts. Work back and forth 2 cm (0.8 in) St st. Change to pink yarn, and work an eyelet rnd same as for sleeve (= folding edge) + 2 cm (in) in St st. Bind off rather loosely. Fold neck and in double, and sew on WS.

Hood

Using needles size 2½ mm and beige yarn, cast on 107-111-115-117-121-123 sts. Work back and forth a folding edge same as for sleeves. Change to pink yarn, and needles size 3 mm. Purl 1 row (= WS). Place a marker around mid st = mid hood. Work in St st over 41-43-45-46-48-49 sts, Lace patt over 25 sts, St st over 41-43-45-46-48-49 sts. (Note! WS-rows: Knit all k-sts, and purl all p-sts). Cont working as established. When work measures 17-18-19-20-21-22 cm (6.7-7.1-7.5-7.9-8.3-8.7 in), bind off 10 sts beg of each row 8 times = 4 times each side. Bind off rem sts. Sew mid back seam (= bind-off edge). Fold front edge in double, and sew on WS.

Finishing

Join shoulder seams.

Fold sleeve edges in double, and sew on WS. Sew on sleeves.

Sew hood inside neck band (adjust over mid back if needed).

Twist a cord (approx. 12 cm (4.7 in), using pink yarn.

Make approx. 5-5-5-6-6-6 cm (2-2-2-2.4-2.4-2.4 in) long tassel using pink yarn. Fasten it to the cord, and attach to the hood.

CROCHET BUTTONS

Abbreviations:

ch = chain stitch, **sc** = single crochet, **sl st** = slip st, **dtr** = double treble, **3 yo** on hook

Using crochet hook size 2½ mm and beige yarn, ch4 and join into a ring with 1 sl st.

1st rnd: (RS), ch1, 9 sc into ring, end with pink yarn, 1 sl st to 1st ch-st beg of rnd.

2nd rnd: Cont working with pink yarn, ch5, 1 dtr between each sc, end with 1 sl st to 5th ch-st beg of rnd. Break yarn, and draw through the loop.

Weave in all ends.

Crochet altog. 3 buttons (or desired number of buttons). Sew buttons evenly spaced apart along right front edge.

Crochet buttonhole loops:

Make buttonholes on left front. Fasten yarn with 1 sl st by inserting the hook through the edge close to a picot. Ch15, form a loop, and fasten with 1 sl st on the other side of the picot. Break yarn, and draw through the loop. Weave in all ends on WS.

SHORTS

Beg from waist.

Using needles size 2½ mm and pink yarn, cast on 148-156-164-176-180-188 sts. Work 6-6-7-7-8-8 cm (2.4-2.4-2.8-2.8-3.1-3.1 in)

K2,P2 rib. Change needles to size 3 mm and beige yarn. Knit 1 rnd, adjusting evenly across the rnd number of sts to be 158-166-174-186-194-202 sts. Place markers each side, 80-84-88-94-98-102 sts for back, and 78-82-86-92-96-100 sts for front, and one marker mid front and back. Place a marker around first and last st on back = mid sts for patt. Beg from mid back, and work short rows as foll: K9-10-11-11-12-12, turn, sl 1 st, P18-20-22-22-24-24. Turn, work 9-10-11-11-12-12 sts more at each side, altog 8 times = 4 at each edge. Beg mid back, and work over all sts: K27-29-31-34-36-38, Lace patt over 25 sts, K54-58-62-68-72-76, Lace patt over 25 st, and end with K27-29-31-34-36-38. Lace patt is worked over the mid side sts of each leg. Cont working as established. When work measures 22-23-24-25-26-26 cm (8.7-9.1-9.4-9.8-10.2-10.2 in), measured from cast-on edge mid front, inc 1 st each side of markers mid back and front. Rep inc every 2nd rnd altog. 8-8-8-9-9-9 times.

Finis each leg separately.

Work sts **from mid front marker until back mid marker** using another circular needle = leg. Place a marker beg of the rnd = inner seam. Cont working in rnds in St st and Lace patt. Dec 1 st both sides of the marker approx. every 2 cm (0.8 in) 2-3-3-4-4-4 times. When leg measures the given length (or as desired), change to pink yarn and needles size 2 ½ mm. Work 2-2-2-2-3-3 cm (0.8-0.8-0.8-0.8-1.2-1.2 in) in rnds in St st. Next rnd: *K2tog, 1 yo*, rep *-* across the rnd, + 2-2-2-2-3-3 cm (0.8-0.8-0.8-0.8-1.2-1.2 in) in St st. Bind off rather loosely.

Work same for the other leg.

Weave in all ends on WS. Fold leg edges in double, and sew on WS.

Fold waist rib in double, and sew on WS to form a tunnel. Thread elastic to the tunnel.

Viking Bjørk

Cardigan, shorts and socks **1203-11**

CARDIGAN

Size	2	4	6/8	10	12/14 yrs
Chest, approx.	62	68	75	82	88 cm
	24.4	26.8	29.5	32.3	34.6 in
Length, approx.	36	43	50	57	62 cm
	14.2	16.9	19.7	22.4	24.4 in
Sleeve length, approx.	28	33	38	43	48 cm
	11	13	15	16.9	18.9 in

SHORTS

Size, approx.	4	6	8/10	12/14 yrs
Hips, approx.	64	70	76	83 cm
	25.2	27.6	29.9	32.7 in
Leg length, approx.	12	14	16	20 cm
	4.7	5.5	6.3	7.9 in

SOCKS:

Shoe size	22-23	24-26	27-29	30-33	34-36	37-39
Foot length	14	16	18	20	22	24 cm
	5.5	6.3	7.1	7.9	8.7	9.4 in

ALTERNATIVE YARN: Viking Bjørk (90% cotton, 10% merino wool, superwash), Viking Alpaca Silk (50% alpaca, 50% silk), 50 g ball

CARDIGAN

Violet, 569: 4 4 4 5 5 balls
Off-White, 502: 2 2 2 3 3 balls

SHORTS:

Violet, 569: 1 2 2 3 balls
Off-White, 502: 1 2 2 3 balls

SOCKS:

Violet, 569: 1 1 2 2 2 2 balls
Off-White, 502: 1 1 1 1 2 2 balls

Circular needle and double pointed needles size 2 ½ and 3 mm – US 1 or 2 and 2 or 3 – UK/Canadian 13 or 12 and 11 + elastic for shorts.

Gauge: 25 sts = approx. 10 cm (4 in) over St st using needles size 3 mm. **Check your gauge to ensure success.**

CARDIGAN

Using needles size 2½ mm and violet yarn, cast on 144 – 160 – 178 – 194 – 210 sts. Work back and forth in St st. When work measures 2 ½ - 2 ½ - 2 ½ - 3 - 3 cm (1-1-1-1.2-1.2 in), knit 1 row from WS = folding edge + 2 ½ - 2 ½ - 2 ½ - 3 - 3 cm (1-1-1-1.2-1.2 in) in St st. Change to needles size 3 m. Knit 1 row, adjusting evenly across the row number of sts to be 154 – 170 – 188 – 204 – 220 sts. Place markers each side, 38 – 42 – 46 – 50 – 54 sts for both fronts, and 78 – 86 – 96 – 104 – 112 sts for back. Cont working back and forth inside 3 sts at each edge = worked in Garter st. When work measures approx. 22 – 29 – 34 – 37 – 44 cm (8.7-11.4-13.4-14.6-17.3 in) (measured from folding edge), divide work for back and fronts. Finish back and fronts separately.

Back: Cont working back and forth in St st until work measures 36 – 43 – 50 – 57 – 62 cm (14.2-16.9-19.7-22.4-24.4 in). Bind off.

Right front: Work same as for back, **but** when work measures approx. 31 – 38 – 44 – 51 – 55 cm (12.2-15-17.3-20.1-21.7 in), bind off for neck edge first 7 – 7 – 8 – 8 – 9 sts. Bind off at neck edge every 2nd row 1x7 – 8 – 8 – 8 – 9, 1x3 – 4 – 5 – 5 – 5, 1x2 – 2 – 3 – 3 – 3, and 2 – 2 – 2 – 3 – 3x1 st. When work measures same as back, bind off

Work same for the other front, rev all shaping..

Sleeves:

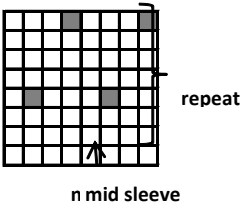
Using needles size 2½ mm and violet yarn, cast on 44 – 44 – 48 – 48 – 52 sts. Work approx. 5 – 5 – 5 – 6 – 6 cm (2-2-2-2.4-2.4 in) in K2,P2 rib. Change to needles size 3 mm and off-white yarn. Knit 1 rnd, adjusting evenly across the rnd number of sts to be 55 – 59 – 63 – 67 – 73 sts. Place a marker beg of rnd (= mid under arm). Work in and rep patt A (check from mid st where to beg patt). Inc 1 st both sides of the marker approx. 2 – 2 – 2 – 2 – 2 ½ cm (0.8-0.8-0.8-0.8-1 in) until you have 81 – 85 – 95 – 101 – 105 sts on a rnd, and sleeve measures approx. 28 – 33 – 38 – 43 – 48 cm (11-13-15-16.9-18.9 in). Bind off.

Finishing: Join shoulder seams. Fold lower edge in double, and sew on WS to form a tunnel. Twist a cord, and thread through the tunnel.

Neck band: Using needles size 2½ mm and violet yarn, pick or knit up approx. 70 – 78 – 86 – 90 – 98 sts. Work back and forth approx. 4 – 5 – 5 – 5 cm (1.6-2-2-2 in) in K2,P2 rib. Bind off in rib. Fold neck border in double, and sew on WS.

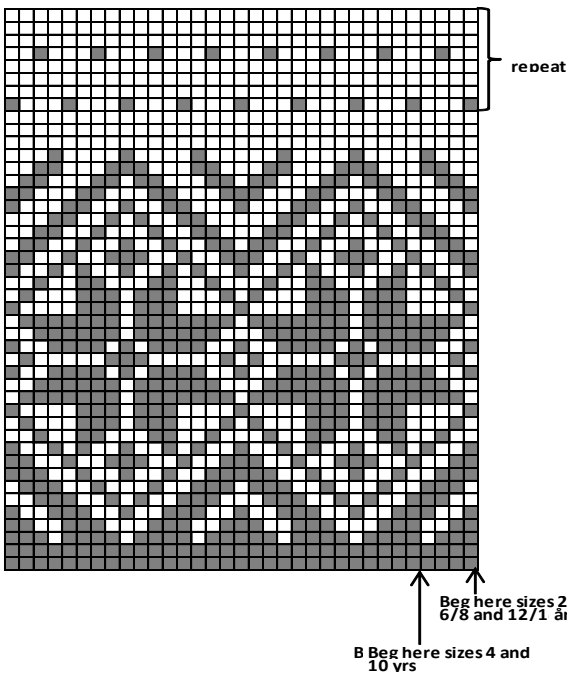
Hood: Using needles size 2½ mm and violet yarn, cast on 94 – 102 – 110 – 118 – 126 sts. Work back and forth approx. 2 – 2 – 3 – 3 – 3 cm 0.8-0.8-1.2-1.2-1.2 (in) in K2,P2 rib. Change to needles size 3 mm. Work in patt B (back and forth) as charted. Inc evenly across 1st row number of sts to be 97 – 105 – 113 – 121 – 129 sts. When work measures 7 – 7 – 8 – 8 – 9 cm (2.8-2.8-3.1-3.1-3.5 in), bind off 1 st at each edge every 4th row altog. 3 – 4 – 4 – 5 – 5 times = 91 – 97 – 105 – 111 – 119 sts. Cont working in patt as charted. When work measures 20 – 20 – 22 – 22 – 24 cm (7.9-7.9-8.7-8.7-9.4 in), bind off 9 – 10 – 11 – 11 – 12 sts beg of each row altog. 10 times. Bind off rem sts. Sew mid back seam. Sew hood inside neck edge. Beg from mid back (adjust over mid back if needed). Sew on sleeves, and weave in all ends on WS.

PATTERN A



□ = off-white
■ = violet

Pattern B



□ off-white
■ =li violet

SHORTS

Beg from waist

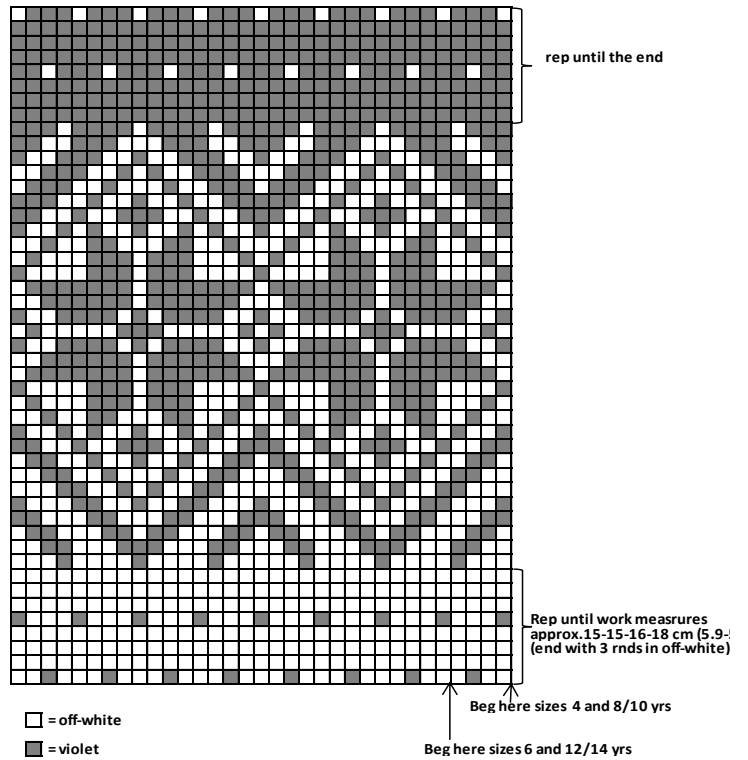
Using needles size 2 ½ mm and off-white yarn, cast on 144 – 160 – 176 – 192 sts. Work in rnds 4 cm (1.6 in) in K2,P2 rib. Change to needles size 3 mm. Knit 1 rnd, adjusting evenly across the rnd number of sts to be 160 – 176 – 192 – 208 sts. Place markers each side, 81 – 89 – 97 – 105 sts for back, and 79 – 87 – 95 – 103 sts for front. Place markers mid front and back. Beg from mid back marker: K9, turn, P17. Turn, work 8 – 9 – 10 – 11 sts more each time until you have reached the side markers. Knit 1 rnd over all sts. Beg from left side marker, and cont working in patt C as charted. When work measures approx. 20 – 20 – 21 – 22 cm (7.9-7.9-8.3-8.7 in) (measured over mid front, from cast-on edge), inc 1 st both sides of mid front and back markers. Rep inc every 2nd rnd altog. 8 – 8 – 9 – 10 times.

Work each leg separately. Using another circular needle, work sts from front mid st until back mid st = 96 – 104 – 114 – 124 sts for each leg. Place a marker on the inner seam of the leg. Cont working in rnds in patt C. Dec 1 st both sides of the marker approx. 2 ½ cm (1 in) 2 – 3 – 3 – 4 times. When work measures approx. 7 – 8 – 9 – 12 cm (2.8-3.1-3.5-4.7 in) (or desired length before rib). Change to needles size 2 ½ mm and violet yarn. Knit 1 rnd, adjusting across the rnd number of sts to be 88 – 96 – 104 – 112 sts. Work 5-5-6-6 cm (2-2-2.4-2.4 in) in K2,P2 rib. Bind off in rib.

Finishing

Sew (cross st) the elastic inside waist rib. Weave in all ends on WS.

Pattern C



SOCKS

Using needles size 2 ½ mm and violet yarn, cast on 52 – 52 – 56 – 60 sts. Work in rnds 5 – 6 – 6 – 7 cm (2-2.4-2.4-2.8 in) K2,P2 rib. Change to needles size 3 mm. Knit 1 rnd, adjusting evenly across the rnd number of sts to be 60 – 64 – 68 – 72 sts. Change to off-

white. Cont working in patt A. Place a marker beg of rnd. When work measures 10 – 13 – 20 – 22 cm (4-5.1-7.9-8.7 in), beg dec: Dec 1 st both sides of the marker approx. every 1 ½ - 1 ½ - 1 ½ - 2 cm (0.6-0.6-0.6-0.8 in) until 40 – 44 – 48 – 52 sts rem, and work measures approx. 25 – 28 – 35 – 39 cm (9.8-11-13.8-15.4 in).

Heel: Change to violet yarn. Work heel over 20 – 22 – 24 – 26 mid back sts (10 – 11 – 12 – 13 sts both sides of the mid marker). Work back and forth 4 – 4 – 5 – 5 cm (1.6-1.6-2-2 in), and dec as foll: Knit until 6 – 7 – 8 – 8 sts rem, turn, purl until 6 – 7 – 8 – 8 sts rem. Turn, knit until 7 – 8 – 9 – 9 sts rem. Sl 1 st, K1, pss0. Turn, purl until 7 – 8 – 9 – 9 sts rem. P2tog. Turn, and cont dec in the same way, with 1 st less each row until 8 – 8 – 8 – 10 mid sts rem. Change to off-white yarn. K8 – 8 – 8 – 10, pick up 10 – 10 – 12 – 13 sts each side of the heel + sts on top of the foot = 48 – 50 – 56 – 62 sts. Place markers each side of the heel. Dec 1 st at each side, before 1st marker: K2togtbl, after 2nd marker: K2tog. Rep dec every 2nd rnd altog. 4 – 3 – 4 – 5 times = 40 – 44 – 48 – 52 sts. When foot measures 14 – 16 – 18 – 20 cm (5.5-6.3-7.1-7.9 in) (or 2 – 2 – 3 – 3 cm (0.8-0.8-1.2-1.2 in) less than the desired length). Place markers each side, 20 – 22 – 24 – 26 sts for each side. Beg dec as foll: Work until 2 sts rem before 1st marker, K2togtbl, K2, work until 2 sts rem before next marker, and rep dec. Rep dec every 2nd rnd twice, and then every rnd until 8 sts rem. Break yarn, thread through rem sts, and weave in on WS.

Viking Bjørk

Sweater with cables

1203-12

Size	2/4	6	8	10	12/14 yrs
Chest	65	70	75	80	85 cm
	25.6	27.6	29.5	31.5	33.5 in
Length	38	45	50	54	60 cm
	15	17.7	19.7	21.3	23.6 in
Sleeve length	30	34	38	42	46 cm
	11.8	13.4	15	16.5	18.1 in

ALTERNATIVE YARN: Viking Bjørk (90% cotton, 10 % merino wool, superwash), Viking Alpaca Silk (50% alpaca, 50% silk), 50 g ball

White, 500 4 5 5 6 7 balls
Light Grey, 513 1 1 1 1 1 ball

Double pointed needles and circular needle size 2 ½ and 3 mm – US 1 or 2 and 2 or 3 – UK/Canadian 13 or 12 and 11

Gauge: 25 sts = approx. 10 cm (4 in) over St st using needles size 3 mm. 32 sts = approx. 10 cm (4 in) over cable patt using needles size 3 mm. **Check your gauge to ensure success.**

BODY

Using needles size 2½ mm and grey yarn, cast on 152-164-176-188-200 sts. Work in rnds approx. 3 cm (1.2 in) in K2,P2 rib. Knit 1 rnd, adjusting evenly across the rnd number of sts to be 220-236-248-260-272 sts. Change to white yarn, and needles size 3 mm. Work 1 rnd in St st. Place markers each side, 110-118-124-130-136

sts for each side. Beg from a side marker, and work as foll: St st over 10-14-17-20-23 sts – patt over 90 sts (Note! Work in rev from mid st) – St st over 10-14-17-20-23 sts (= front). Work for the back. Cont working as established until work measures approx. 23-29-33-36-41 cm (9.1-11.4-13-14.2-16.1 in) (or as desired before armholes). Divide work at side markers, and finish back and front separately.

Back

Cont working back and forth, until work measures 37-44-49-53-59 cm (14.6-17.3-19.3-20.9-23.2 in), and armhole measures approx. 14-15-16-17-18 cm (5.5-5.9-6.3-6.7-7.1 in). Change to needles size 2½ mm. Purl 1 row (= WS), and adjust number of sts to be 78-82-90-94-102 sts (**Note! Dec only over cable patt**). Cont working approx. 2 cm (0.8 in) in K2,P2 rib. Bind off in rib.

Front

Work same as for back. When work measures approx. 34-41-46-50-56 cm (13.4-16.1-18.1-19.7-22 in), slip 38-38-42-42-42 mid sts on holder. Finish each side separately. Bind off at neck edge every 2nd row 2x5, 2x4, and 2x1 st = 16-20-21-24-27 sts rem for shoulder. When work measures 37-44-49-53-59 cm (14.6-17.3-19.3-20.9-23.2 in), slip rem sts on holder. Work same for the other side, rev all shaping.

Front band: Slip left front shoulder sts on needles size 2½ mm (16-20-21-24-27 sts) – pick up approx. 28-28-30-30-30 sts along neck edge – slip 38-38-42-42-42 sts mid front on needles – pick up approx. 28-28-30-30-30 sts along neck edge – slip right front shoulder sts on needles = altog. 126-134-144-150-156 sts. Work back and forth 2 rows, adjusting evenly across the rows number of sts to be 90-98-110-114-122 sts (**Note! Dec only over cable patt mid front**). Cont working in K2,P2 rib, until band measures 2 cm (0.8 in), but when band measures 1 cm (0.4 in), make 3 buttonholes on each shoulder: *work 3-4-5-6-7 sts, + 1 buttonhole = bind off 2 sts, next row: cast on 2 sts over bound-off sts*, rep *-* altog 3 times = 3 buttonholes. Cont working in rib until 16-20-21-24-27 sts rem (= shoulder sts). Work 1-2-0-3-0 sts, *1 buttonhole, + 3-4-5-6-7 sts*, rep *-* = 3 buttonholes (end with 3-4-5-6-7 sts). When band measures 2 cm (0.8 in), bind off in rib.

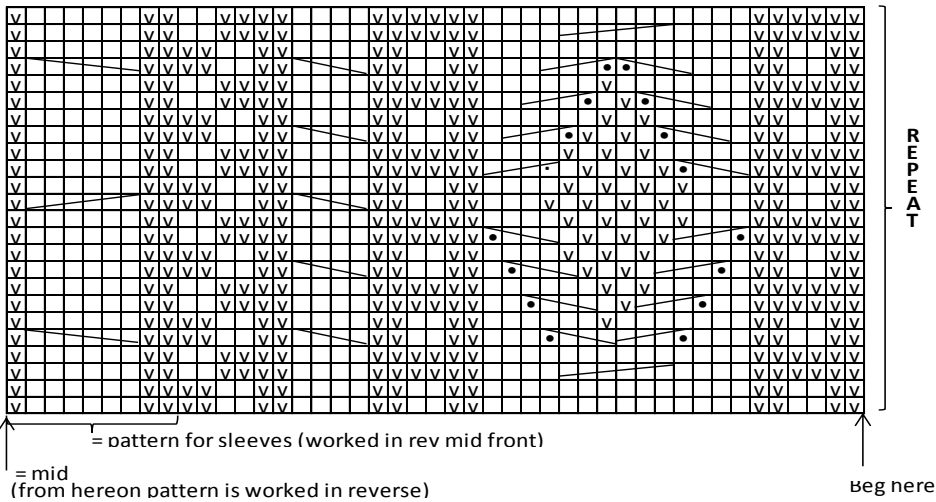
Sleeves



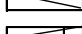

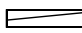


Using needles size 2½ mm and grey yarn, cast on 40-44-44-48-48 sts. Work in rnds 3 cm (1.2 in) in K2,P2 rib. Place a marker mid under arm = beg of rnd, and another marker mid of rnd = mid of sleeve patt. Change to needles size 3 mm. Knit 1 rnd, adjusting evenly across the rnd number of sts to be 56-60-64-68-70 sts. Change to white yarn, and work as foll: St st over 19-21-23-25-26 sts + patt for sleeve over 18 sts + St st over 19-21-23-25-26 sts. Cont working as established. Inc 1 st both sides of mid under arm marker approx. every 2½-3-3-3½-3 cm (1-1.2-1.2-1.4-1.2 in) until you have 76-80-86-90-96 sts on a rnd. Work stripes as foll: *5½-6-7-8-8½ cm (2.2-2.4-2.8-3.1-3.3 in) in white – 5½-6-7-8-8½ cm (2.2-2.4-2.8-3.1-3.3 in) grey*, rep *-* until work measures the given length. When work measures the given length, and you have

76-80-86-90-96 sts on a rnd, bind off. Work same for the other sleeve. Work same for the other sleeve.

Finishing:

Place upper edge ribs on top of each other, and sew together at armhole edges. Sew on sleeves. Weave in all ends on WS. Sew 3 buttons on each shoulder.



-  = Knit on RS, purl on WS
-  = Purl on RS, knit on WS
-  = sl 2 sts on cn, hold to front, K2, K2 from cn
-  = sl 1 st on cn, hold to back, K3, K1 from cn
-  = sl 3 sts on cn, hold to front, K1, K3 from cn
-  = sl 3 sts on cn, hold to back, K3, K3 sts from cn
-  = sl 3 sts on cn, hold to front, K3, K3 from cn

Viking Bjørk

Cardigan with hood

1203-13

Size:	2	4	6	8	10/12 yrs
Chest:	approx. 60	65	70	76	80 cm
	23.6	25.6	27.6	29.9	31.5 in
Length:	approx. 36	40	45	50	54 cm
	14.2	15.7	17.7	19.7	21.3 in
Sleeve length:	approx. 30	34	38	42	45 cm
	11.8	13.4	15	16.5	17.7 in

ALTERNATIVE YARN: Viking Bjørk (90% cotton, 10% merino wool, superwash), Viking Alpaca Silk (50% alpaca, 50% silk), 50 g ball

Off-White, 502 5 6 7 8 9 balls

Circular needle and double pointed needles size 2½ and 3 mm – US 1 or 2 and 2 or 3 – UK/Canadian 13 or 12 and 11
Crochet hook size 2½ mm – US B/1 or C/2 – UK/Canadian 12 + 4-4-5-5-5 toggles

Gauge: 25 sts = approx. 10 cm (4 in) over St st using needles size 3 mm. **Check your gauge to ensure success.**

Back

Using needles size 3 mm, cast on 76-80-88-96-104 sts. Work back and forth approx. 3 cm (1.2 in) in K2,P2 rib. Purl 1 row (= WS), adjusting evenly across the row number of sts to be 90-96-102-110-114 sts. Cont working back and forth in patt as foll: St st over 24-27-30-34-36 sts – patt over 42 sts (keep rep in height) – St st over 24-27-30-34-36 sts. Cont working back and forth as established until work measures 36-40-45-50-54 cm (14.2-15.7-17.7-19.7-21.3 in). Bind off.

Right front

Using needles size 3 mm, cast on 40-44-44-48-52 sts. Work back and forth approx. 3 cm (1.2 in) in K2,P2 rib. Purl 1 row (= WS), adjusting evenly across the row number of sts to be 52-55-58-62-65 sts. Beg from RS, and work cable patt over 42 sts as charted, and St st over rem 10-13-16-20-23 sts.

Cont working back and forth as established until work measures 31-35-40-44-48 cm (12.2-13.8-15.7-17,3-18.9 in). Bind off for neck edge first 18-20-20-22-26 sts. Bind off at neck edge every 2nd row 1x4, 1x3, 1x2, and 1x1 st (same for all sizes). When work measures same as back, bind off. Work same for left front, rev all shaping.

Sleeves

Using needles size 3 mm, cast on 62-62-66-66-70 sts. Cont working back and forth in K2,P2 rib. Inc 1 st at each edge approx. every 5-3-4½-3½-4½ cm (2-1.2-1.8-1.4-1.8 in) until you have 74-82-82-90-90 sts on a row. When work measures the given length, bind off.

Work same for the other sleeve.

Finishing

Sew shoulder seams, and side seams.

Neck band: Using needles size 2½ mm, pick or knit up approx. 82-86-94-98-102 sts around neck edge. Work back and forth approx. 5 cm (2 in) in K2,P2 rib. Bind off in rib. Fold neck band in double, and sew on WS.

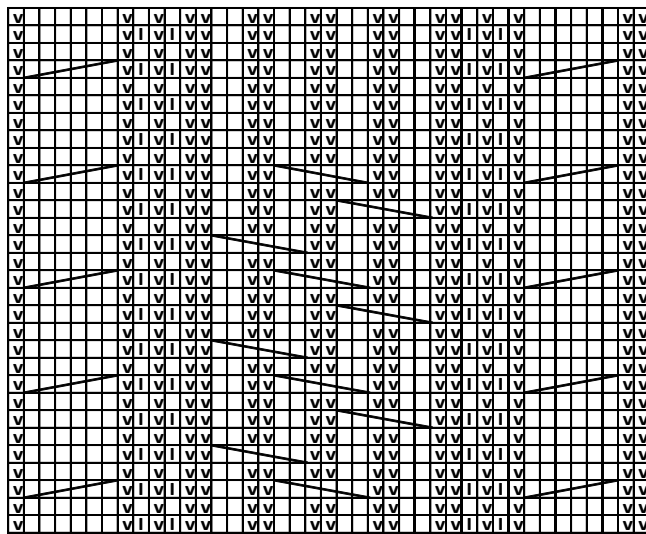
Right front edge: Using needles size 2½ mm, pick or knit up approx. 88-96-108-116-124 sts along front edge. Work back and forth approx. 3 cm (1.2 in) in K2,P2 rib. Bind off.

Work same for left front edge.

Crochet buttonhole loops using crochet hook size 3 mm: Ch20, turn, 1 sc to each st. Sew on the other front edge forming a loop. Make altog. 8 loops, 4 as buttonhole loops, and use the other 4 loops to attach the toggles on the other front. .

Hood (2/4 – 6/8 – 10/12 yrs)

Using needles size 3 mm, cast on 125-139-155 sts. Work back and forth 5 cm (2 in) in K1,P1 rib. Cont working back and forth in St st. Bind off 1 st at each edge every 4th row altog. 6-8-10 times = 113-123-135 sts. When work measures approx. 20-22-23 cm (7.9-8.7-9.1 in), measured from cast-on edge, bind off at each edge 13-14-15 sts 4 times, bind off rem sts. Fold hood in double, and sew mid back seam (along bound-off sts). Twist a cord (approx. 90-100-110 cm (35.4-39.4-43.3 in) long), and thread through the tunnel.



ena nere

PATTERN OVER 42 STITCHES

Beg here

☐ = Knit on RS, purl on WS

☑ = Purl on RS, knit on WS

▢ = Sl 1 st (tbl)

▢▢▢ = sl 3 sts on cn, hold to back, K3, knit sts from cn

▢▢▢ = sl 2 sts on cn, hold to front, sl next 2 sts on another cn, hold to back, K2, P2 from the other cn, K2 from first cn

Viking Bjørk Sweater

1203-14

Size:	2	4	6	8	10/12	14 yrs
Chest, approx.	58	64	70	77	83	90 cm
	22.8	25.2	27.6	30.3	32.7	35.4 in
Length, approx.	30	33	40	46	52	58 cm
	11.8	13	15.7	18.1	20.5	22.8 in
Sleeve length, approx.	27	30	33	38	43	47 cm
	10.6	11.8	13	15	16.9	18.5 in

Alternative yarn: Viking Bjørk (90% cotton, 10% merino wool, superwash), Viking Alpaca Silk (50% alpaca, 50% silk), 50 g ball

White, 502:	2	2	2	3 3	3 balls
Black, 503:	1	1	1	1 2	2 balls
Petrol, 529:	1	1	1	1 2	2 balls
Green, 537:	1	1	1	1 2	2 balls
Violet, 569:	1	1	1	1 2	2 balls

Circular needle and double pointed needles size 2 ½ and 3 mm – US 1 or 2 and 2 or 3 – UK/Canadian 13 or 12 and 11

Gauge: 25 sts = approx. 10 cm (4 in) over St st using needles size 3 mm. **Check your gauge to ensure success.**

SWEATER

Using needles size 2 ½ mm and white yarn, cast on 132 – 144 – 160 – 172 – 188 – 200 sts. Work in rnds 4 – 4 – 5 – 5 – 6 – 6 cm (1.6-1.6-2-2-2.4-2.4 in) in K1,P1 rib. Change to needles size 3 mm. Work in both patt A and B, and inc evenly across first rnd number of sts to be 144 – 160 – 176 – 192 – 208 – 224 sts. Place markers each side, 72 – 80 – 88 – 96 – 104 – 112 sts for both back and front. When work measures 16 – 20 – 26 – 31 – 36 – 40 cm (6.3-7.9-10.2-12.2-14.2-15.7 in), divide work at side markers. Finish back and front separately.

Back

Cont working in patt A and B until work measures approx. 30-33-40-46-52-58 cm (11.8-13-15.7-18.1-20.5-22.8 in).

Front

Work same as for back. When work measures 26 – 31 – 38 – 43 – 49 – 55 cm (10.2-12.2-15-16.9-19.3-21.7 in), bind off for neck edge 16 – 16 – 18 – 20 – 20 mid sts. Finish each side separately. Bind off at neck edge every 2nd row 1x 4 – 4 – 5 – 5 – 5 – 5, 1 – 1 – 1 – 2 – 2 – 2 x2, and 1 – 2 – 2 – 1 – 1 – 2 x1 st = 21 – 24 – 26 – 29 – 32 – 35 sts rem for shoulder. When work measures same as back, bind off. Work same for the other side, rev all shaping.

Sleeves

Using needles size 2 ½ mm and white yarn, cast on 44 – 44 – 46 – 46 – 48 – 48 sts. Work in rnds 4 – 4 – 5 – 5 – 6 – 6 cm (1.6-1.6-2-2-2.4-2.4 in) in K1,P1 rib. Change to needles size 3 mm. Place a marker beg of rnd = mid under arm. Work in patt A and B, and inc evenly across first rnd number of sts to be 58 – 60 – 64 – 66 – 66 – 70 sts. Inc 1 st both sides of the marker approx. every 2 cm (0.8 in) until you have 80 – 86 – 90 – 96 – 100 – 110 sts on a rnd, and sleeve measures the given, or desired length. Bind off.

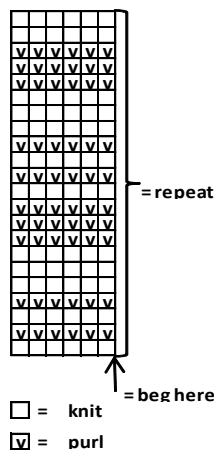
Finishing

Join shoulder seams.

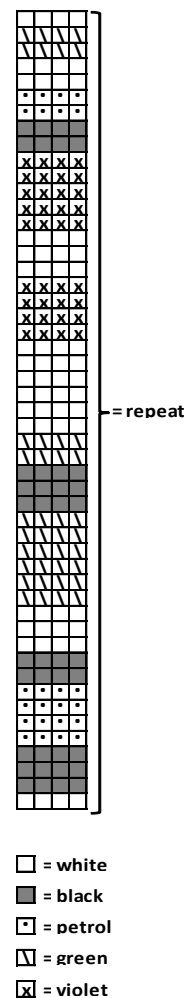
Neck band: Using needles size 2½ mm and white yarn, pick or knit up approx. 90-94-100-104-108-110 sts. Work 2 rnds in St st, and then 3 – 3 – 3 – 4 – 4 – 4 cm (1.2-1.2-1.2-1.6-1.6-1.6 in) in K1,P1 rib. Bind off in rib.

Sew on sleeves.

Pattern A, Garter st stripes



Pattern B, colored stripes



Viking Bjørk

1203-15

Cardigan, scarf and hat for a boy

Size	2	4	6	8	10	12 yrs
Chest	60	66	71	76	80	84 cm
	23.6	26	28	29.9	31.5	33.1 in
Length, approx.	39	41	46	50	56	59 cm
	15.4	16.1	18.1	19.7	22	23.2 in
Sleeve length, approx.	28	31	35	38	42	45 cm
	11	12.2	13.8	15	16.5	17.7 in
Scarf, length approx.	90	100	110	120	130	140 cm
	35.4	39.4	43.3	47.2	51.2	55.1 in

ALTERNATIVE YARN: Viking Bjørk (90 % cotton, 10% merino wool, superwash), Viking Alpaca Silk (50% alpaca, 50 % silk)

CARDIGAN

Grey, 513 5 5 6 7 8 9 ball

SCARF AND HAT

Brown, 518 1 1 1 1 1 1 ball

Green, 537 1 1 1 1 1 1 ball

White, 500 1 1 1 1 1 1 ball

Petrol, 529 1 1 1 1 1 1 ball

Black, 503 1 1 1 1 1 1 ball

Grey, 513 1 1 1 1 1 1 ball

Circular needle and double pointed needles size 2 ½ and 3 mm – US 1 or 2 and 2 or 3 – UK/Canadian 13 or 12 and 11
 short circular needle size 2 ½ and 3 mm for hat – US 1 or 2 and 2 or 3 – UK/Canadian 13 or 12 and 11
 + 6-6-6-7-7-7 buttons

Gauge: 25 sts = approx. 10 cm (4 in) over St st using needles size 3 mm. **Check your gauge to ensure success.**

CARDIGAN

Using needles size 2½ mm, cast on 144-160-172-184-196-204 sts. Work back and forth 3 ½-3-3-4-4-4 cm (1.4-1.2-1.2-1.6-1.6-1.6 in) in St st. Knit 1 row (= WS) = folding edge, all measures are taken from here. + 3½-3-3-4-4-4 cm (1.4-1.2-1.2-1.6-1.6-1.6 in) in St st, but cast on 5 sts beg and end of first row = front bands, worked in Garter st = 154-170-182-194-206-214 sts. Change to needles size 3 mm. Place markers each side, 76-84-90-96-102-106 sts for back, and 39-43-46-49-52-54 sts for each front. Cont working back and forth in St st. Make a buttonhole at left edge (end of row): K1, bind off 2 sts (next row: cast on 2 sts over the bound-off sts), K2. Make buttonholes 6 ½-7-8-7-8-8 ½ cm (2.6-2.8-3.1-2.8-3.1-3.3 in) spaced apart. When work measures 8-9-11-12-14-15 cm (3.1-3.5-4.3-4.7-5.5-5.9 in) measured from folding edge, work patt as charted 4 times in height = 24 rows. Cont working in St st. When work measures 24-25-29-32-37-39 cm (9.4-9.8-11.4-12.6-14.6-15.4 in), measured from folding edge, bind off for armholes 6-6-6-8-8-8 sts each side = 3-3-3-4-4-4 sts both sides of the markers. Finish back and fronts separately.

Back

Work back and forth 2-2-3-3-4-4 cm (0.8-0.8-1.2-1.2-1.6-1.6 in) in St st. Work patt as charted 8 times. Cont working in St st until work measures the given length, and armhole measures 15-16-17-18-19-20 cm (5.9-6.3-6.7-7.1-7.5-7.9 in). Bind off, or slip sts on holder.

Right front

Work same as for back, St st and patt. When work measures 35-38-43-47-51-55 cm (13.8-15-16.9-18.5-20.1-21.7 in), bind off 14-15-16-18-20-20 sts for neck edge. Bind off at neck edge every 2nd row 1x3, 1x2, and 1x1 st = 16-19-21-21-22-24 sts rem. When work measures same as back, bind off or slip sts on holder.

Left front

Work same as for right front, rev all shaping.

Sleeves

Using needles size 2½ mm, cast on 40-42-44-46-48-50 sts. Work in rnds 3-3-3-4-4-4 cm (1.2-1.2-1.2-1.6-1.6-1.6 in) in St st + knit 1 row (= WS) = folding edge + 3-3-3-4-4-4 cm (1.2-1.2-1.2-1.6-1.6-1.6 in) in St st. Change to needles size 3 mm. Place a marker mid under arm = beg of rnd. Knit 1 rnd, adjusting evenly across the rnd number of sts to be 54-56-58-60-62-64 sts. Cont working in St st. Inc 1 st beg and end of each rnd. Rep inc every 2 cm (0.8 in) until you have 78-82-86-90-94-102 sts on a rnd. When work measures 13-16-20-23-27-30 cm (5.1-6.37-9-9.1-10.6-11.8 in), measured from folding edge, work patt as charted 4 times in height = 24 rnds. Cont working in St st. When work measures 26-29-33-36-40-43 cm (10.2-11.4-13-14.2-15.7-16.9 in), measured from folding edge, bind off 3-3-3-4-4-4 sts both sides of the

marker. Cont working back and forth 2 cm (0.8 in) in St st. Bind off rem sts.

Work same for the other sleeve.

Finishing

Join shoulder seams.

Fold lower edge of the body and sleeves in double, and sew on WS.

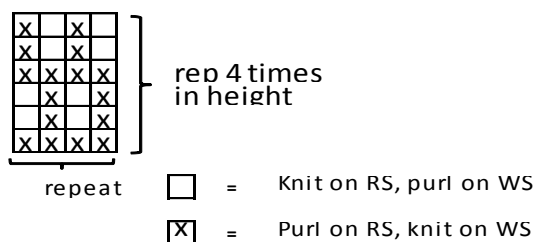
Neck band

Pick or knit up approx. 88-92-96-106-112-114 sts along neck edge. Work back and forth 2-2 ½-3-3-4-4 cm (0.8-1-1.2-1.2-1.6-1.6 in) in St st + knit 1 row (=WS) = folding edge + 2-2 ½ 3-3-4-4- cm (0.8-1-1.2-1.2-1.6-1.6 in) in St st. Bind off rather loosely. Fold neck band in double, and sew on WS.

Sew on sleeves.

Weave in all ends on WS.

Sew on 6-6-6-7-7-7 buttons along right front band.



SCARF

Use a long circular needle to fit all sts.

Using needles size 3 mm and grey yarn, cast on 225-250-275-300-325-350 sts.

Work 4 rows in Garter st. Cont working in St st and stripes as foll: *2 rows in brown, 2 rows in green, 2 rows in white, 2 rows in petrol, 2 rows in black*, rep *-* until work measures approx. 16-17-18-20-22-23 cm (6.3-6.7-7.1-7.9-8.7-9.1 in), or desired width. Change to grey yarn, and work 4 rows in Garter st. Bind off in p-sts on RS row rather loosely. Weave in all ends on WS. Tie approx. 10 cm (4 in) long fringes, using all clrs, along both short edges.

HAT

Size:	2/4	6/8	10/12 yrs
Circumference	43	46	48 cm
	16.9	18.1	18.9 in

Using needles size 2 ½ mm and grey yarn, cast on 108-114-120 sts. Work in rnds 2-3-4 cm (0.8-1.2-1.6 in) in St st, purl 1 rnd = folding edge + 2-3-4 cm (0.8-1.2-1.6 in) in St st. Change to brown yarn, and needles size 3 mm. Work in stripes same as for scarf. When work measures approx. 17-18-19 cm (6.7-7.1-7.5 in), (or desired length before dec), beg crown dec: *K4, K2tog*, rep *-* across the rnd. Rep dec every 3rd rnd, with 1 st less between each dec until 36-38-40 sts rem. Work 1 rnd without dec. Next rnd: Knit all sts tog in pairs =18-19-20 sts. Break yarn, thread through rem sts, pull tightly, and weave in on WS. Fold cast-on edge in double, and sew on WS.

Weave in all ends on WS.

Viking Bjørk

Boy's cardigan

1203-16

Size:	2	4	6	8	10/12	14 yrs
Width, approx.	58	64	70	77	83	90 cm
	22.8	25.2	27.6	30.3	32.7	35.4 in
Length, approx.	32	37	44	50	56	62 cm
	12.6	14.6	17.3	19.7	22	24.4 in
Sleeve length, approx.	27	30	33	38	43	47 cm
	10.6	11.8	13	15	16.9	18.5 in

Alternative yarn: Viking Bjørk(90% cotton, 10% merino wool, superwash) , Viking Alpaca Silk (50% alpaca, 50% silk), 50 g ball

Navy Blue, 526	3	4	4	4	5	5 balls
Beige, 507	1	1	1	1	2	2 balls
Orange, 551	1	1	1	1	1	1 ball

Circular needle and double pointed needles size 2½ and 3 mm – US 1 or 2 and 2 or 3 – UK/Canadian 13 or 12 and 11

Gauge: 25 sts = approx. 10 cm (4 in) over St st using needles size 3 mm. **Check your gauge to ensure success.**

CARDIGAN

Using needles size 2½ mm and orange yarn, cast on 140 – 156 – 172 – 188 – 204 – 220 sts. Work 2 rows in Garter st. Change to navy blue yarn. Cont working back and forth 10 rows in Garter st. Change to needles size 3 mm. Cont working in patt as charted. Place markers each side, 34 – 38 – 42 – 46 – 50 – 54 sts for each front, and 72 – 80 – 88 – 96 – 104 – 112 sts for back. When work measures 14 – 18 – 24 – 28 – 32 – 37 cm (5.5-7.1-9.4-11-12.6-14.6 in), beg dec for V-neck. Dec 1 st at each edge inside 1 selvage st. Rep dec approx. every 1 cm (0.4 in). When work measures 17 – 21 – 27 – 32 – 36 – 41 cm (6.7-8.3-10.6-12.6-14.2-16.1 in), divide work at side markers. Finish back and fronts separately.

Back

Cont working in Garter st with navy blue yarn. When work measures 32 – 37 – 44 – 50 – 56 – 62 cm (12.6-14.6-17.3-19.7-22-24.4 in), bind off.

Front

Cont working in Garter st with navy blue yarn. Keep rep V-neck dec until 18 – 20 – 22 – 25 – 28 – 31 sts rem. When work measures same as back, bind off. Work same for the other front, rev all shaping.

Sleeves

Using needles size 2½ mm and navy blue yarn, cast on 44 – 46 – 48 – 50 – 52 – 52 sts. Work 12 rnds in Garter st. Change to needles size 3 mm. Knit 1 rnd, adjusting evenly across the rnd number of sts to be 50 – 52 – 56 – 60 – 68 – 74 sts. Place a marker beg of the rnd (= mid under arm). Work in patt as charted, and inc 1 st both sides of the marker approx. every 1½, 2, 2, 2

, 2½ cm (0.6-0.8-0.8-0.8-1 in). When sleeve measures the given length, or as desired, work 2 rnds in Garter st with orange yarn. Bind off.

Finishing

Join shoulder seams.

Collar/Front edges

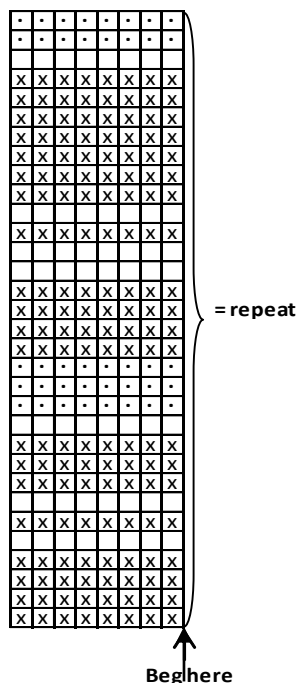
Beg from lower edge of right front. Pick or knit up approx. 32 – 40 – 52 – 60 – 70 – 80 sts along front edge, approx. 44 – 46 – 48 – 50 – 56 – 60 sts along V-neck edge, 30 – 34 – 38 – 40 – 42 – 44 sts from neck edge, approx. 44 – 46 – 48 – 50 – 56 – 60 sts along left V-neck edge, and approx. 32 – 40 – 52 – 60 – 70 – 80 sts along left front edge = approx. 182 – 206 – 238 – 260 – 294 – 324 sts. Place a marker mid back. Work back and forth in Garter st. 3rd row: Work until mid marker, work 10 sts, turn, work 20 sts, turn, and work 10 sts more after each turning altog. 10 – 10 – 12 – 12 – 14 – 14 times (5 – 5 – 6 – 6 – 7 – 7 times both sides of the marker). Cont working in Garter st over all sts. 7th row: Make 3 – 4 – 4 – 5 – 6 buttonholes, one 2 cm (in) from lower edge, one just below first V-neck dec, and rest evenly spaced apart.

Buttonhole: Bind off 2 sts. Next row: Cast on 2 sts over the bound-off ones. When front edges measure 12 rows, bind off. Sew on sleeves.

Pockets

Using needles size 2½ mm and navy blue yarn, cast on 22 – 22 – 24 – 26 – 28 – 30 sts. Work back and forth 7 – 7 – 8 – 8 – 9 – 9 cm (2.8-2.8-3.1-3.1-3.5-3.5 in) in Garter st. Change to orange yarn, and work 2 rows in Garter st. Bind off. Work same for the other pocket.

Sew pockets on the fronts (see photo).



= navy blue, knit on RS, purl on WS

= beige, knit on RS, purl on WS

= beige, purl on RS, knit on WS

Viking Bjørk

Cardigan with hood

1203-17

Size:	2/4	6	8	10	12 yrs
Chest:	approx. 64	70	74	78	84 cm
	25.2	27.6	29.1	30.7	33.1 in
Length:	approx. 38	43	47	51	55 cm
	15	16.9	18.5	20.1	21.7 in
Sleeve length:	approx. 30	34	38	42	45 cm
	11.8	13.4	15	16.5	17.7 in

ALTERNATIVE YARN: Viking Bjørk (90% cotton, 10% merino wool, superwash), Viking Alpaca Silk (50% alpaca, 50% silk), 50 g ball

Beige, 507	5	6	7	8	9 balls
Mint Green, 527	1	1	1	1	1 ball
Navy Blue, 526	1	1	1	1	1 ball
Off-White, 500	1	1	1	1	1 ball
Green, 536	1	1	1	1	1 ball

Circular needle and double pointed needles size 2½ and 3 mm – US 1 or 2 and 2 or 3 – UK/Canadian 13 or 12 and 11 + 4 toggles

Gauge: 25 sts = approx. 10 cm (4 in) over St st using needles size 3 mm. **Check your gauge to ensure success.**

Body

Using needles size 2½ mm and beige yarn, cast on 163-175-187-199-211 sts. Work back and forth approx. 4-4-5-5-5 cm (1.6-1.6-2-2-2 in) in K1,P1 rib. Change to needles size 3 mm. Cont working in rnds in St st and patt I as charted, **but** cast on 3 sts mid front. Purl these sts with basic clr every rnd (= not included in the number of sts). When patt I is ready, cont working in St st with basic clr until work measures 20-25-29-33-37 cm (7.9-11-11.4-13-14.6 in). Cont working in rnds in patt II as charted. When work measures approx. 24-28-31-34-37 cm (9.4-11-12.2-13.4-14.6 in), place markers each side, 85-91-97-103-109 sts for back, and 39-42-45-48-51 sts for each front. Bind off 2 sts at each side (1 st both sides of the markers, and cast on 3 new sts with basic clr over the bound-off sts). Purl these sts with basic clr every rnd. Cont working in patt until work measures approx. 33-38-41-45-49 cm (13-15-16.1-17.7-19.3 in). Bind off for neck edge 25-27-27-29-31 mid sts (incl 3 p-sts). Cont working back and forth. Bind off at each edge every 2nd row 1x3, 1x2, and 1x1 st. When work measures 38-43-47-51-55 cm (15-16.9-18.5-20.1-21.7 in), bind off.

Sleeves

Using needles size 2½ mm and beige yarn, cast on 36-38-40-42-44 sts. Work in rnds 4-4-5-5-5 cm (1.6-1.6-2-2-2 in) in K1,P1 rib. Change to needles size 3 mm. Knit 1 rnd, adjusting evenly across the rnd number of sts to be 49-51-53-57-63 sts. Place a marker mid under arm. Cont working in patt I as charted, **but** inc 1 st both sides of the marker approx. every 2½- 2½-2½-2½-3 cm (1-1-1-1-1.2 in) until you have altog. 69-73-77-83-87 sts on a rnd. When patt I is ready, knit 1 rnd with basic clr. When sleeve measures the given length, turn work inside out. Work 5 rnds in St st (= seam allowance to cover the cut edges on WS). Bind off rather loosely.

Finishing: Sew 4 dense machine seams along the p-sts mid front and for armholes (= approx. 14-15-16-17-18 cm (5.5-5.9-6.3-6.7-7.1 in). Cut open between the seams. Sew shoulder seams.

Neck band: Using needles size 2½ mm and beige yarn, pick or knit up approx. 81-87-93-97-101 sts around neck edge. Work

back and forth 5 cm (2 in) in K1,P1 rib. Bind off in rib. Fold neck edge in double, and sew on WS.

Right front border: Using needles size 2½ mm and beige yarn, pick or knit up approx. 87-97-107-117-125 sts along front edge. Work back and forth 3 cm (1.2 in) in K1,P1 rib. Bind off.

Band for covering cut edge: Using needles size 3 mm and basic clr, cast on 4 sts. Work back and forth in St st until band measures up till neck edge (approx. 29-34-36-40-44 cm (11.4-13.4-14.2-15.7-17.3 in). Bind off, and sew on WS to cover the cut front edge.

Left front border: Work same as for right front border.

HOOD

Using needles size 2½ mm and beige yarn, cast on 97-97-115-115-127 sts. Work back and forth 2½ cm (1 in) in K1,P1 rib, knit 1 row (= WS) = folding edge + 2½ cm (1 in) in rib. Change to needles size 3 mm. Work in patt I as charted. Cont working in St st with basic clr until work measures approx. 18-18-20-20-22 cm (7.1-7.1-7.9-7.9-8.7 in) measured from folding edge. Bind off 23-23-27-27-27 mid sts. Finish each side separately. Work 5-5-6-6-6 cm (2-2-2.4-2.4-2.4 in) in St st. Bind off. Work same for the other side. Join mid back seam. Sew top seam (= sew bound-off sts to side sts on top). Fold front rib in double, and sew on WS. Don't sew the short edges of folding edge as eventually you need to thread in a cord.

Sew on sleeves, and seam allowance over the cut edge on WS. Weave in all ends on WS.

Sew hood along neck edge, inside the neck band. Beg mid back (adjust over mid back if needed), cont sewing until mid front, **but** don't sew over hood's front rib. Twist a cord using beige yarn, and thread through the tunnel

Loops for toggles: Using crochet hook size 2½ mm and beige yarn, ch20, turn, 1 sc to each st. Make altog. 8 loops. Sew 4 loops on left front to form buttonholes. Use the other 4 loops to attach the toggles on right front.

Viking Bjørk

Sweater with short sleeves 1203-18

Size: 2 4 6 8 10/12 14 yrs

Size:	2	4	6	8	10/12	14 yrs
Chest, approx.	58	64	70	77	83	90 cm
	22.8	25.2	27.6	30.3	32.7	35.4 in
Length, approx.	32	35	42	48	52	60 cm
	12.6	13.8	16.5	18.9	20.5	23.6 in
Sleeve length, approx.	12	13	14	15	16	17 cm
	4.7	5.1	5.5	5.9	6.3	6.7 in

Alternative yarn: Viking Bjørk (90% cotton, 10% merino wool, superwash), Viking Alpaca Silk (50% alpaca, 50% silk), 50 g ball

Navy Blue, 526 balls	1	1	1	2	2	2
White, 500 balls	1	1	1	1	1	2
Green, 537 balls	1	1	1	2	2	2
Blue, 523 balls	1	1	1	1	2	2

Circular needle and double pointed needles size 2 ½ and 3 mm – US 1 or 2 and 2 or 3 – UK/Canadian 13 or 12 and 11

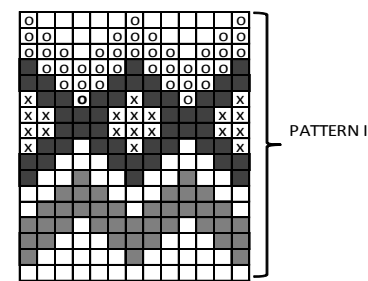
Gauge: 25 sts = approx. 10 cm (4 in) over St st using needles size 3 mm. **Check your gauge to ensure success.**

SWEATER

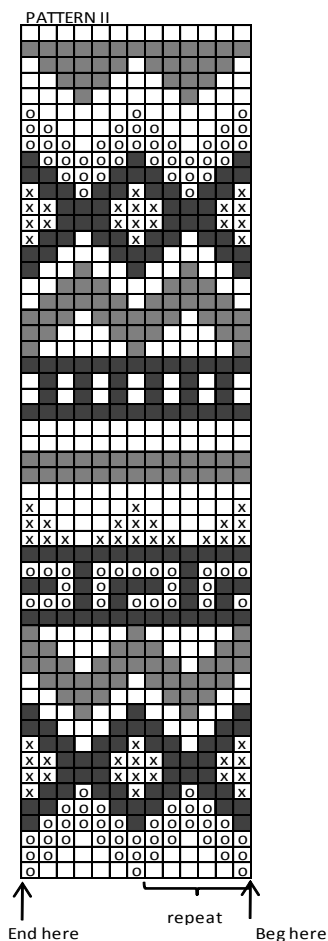
Using needles size 2 ½ mm and navy blue yarn, cast on 132 – 144 – 160 – 172 – 188 – 200 sts. Work in rnds 4 – 4 – 5 – 5 – 6 – 6 cm (1.6-1.6-2-2-2.4-2.4 in) K1,P1 rib. Change to needles size 3 mm. Knit 1 rnd, adjusting evenly across the rnd number of sts to be 144 – 160 – 176 – 192 – 208 – 224 sts. Place markers each side, 72 – 80 – 88 – 96 – 104 – 112 sts for both back and front. Cont working in St st with stripes: 3 rnds in white, 3 rnds in green, change to blue yarn and work until work measures 9 – 9 – 12 – 13 – 15 – 17 cm (3.5-3.5-4.7-5.1-5.9-6.7 in), 6 rnds in navy blue, 3 rnds in white, change to green yarn and work until work measures 16 – 17 – 21 – 25 – 28 cm (6.3-6.7-8.3-9.8-11 in), 3 rnds in navy blue, 6 rnds in blue, 6 rnds in white, change to navy blue yarn. When work measures 19 – 21 – 27 – 32 – 35 – 42 cm (7.5-8.3-10.6-12.6-13.8-16.5 in), bind off 6 – 6 – 6 – 8 – 8 – 8 sts each side (3 – 3 – 3 – 4 – 4 – 4 sts both sides of the markers). Finish back and front separately.

Back

Cont working back and forth in St st until work measures 24 – 25 – 30 – 35 – 39 – 44 cm (9.4-9.8-11.8-13.8-15.4-17.3 in). Work 6 rnds in green, 3 rnds in white, 6 rnds in navy blue, change to blue yarn, and work until work measures 31 – 33 – 40 – 46 – 50 – 58 cm (12.2-13-15.7-18.1-19.7-22.8 in). End with 3 rnds in green, change to white yarn, and work until work measures 32 – 35 – 42 – 48 – 52 – 60 cm (12.6-13.8-16.5-18.9-20.5-23.6 in). Slip 30 – 32 – 36 – 38 – 40 – 42 mid sts on holder, and bind off 21 – 24 – 26 – 29 – 32 – 35 sts for each shoulder.



□ = beige
 ■ = mint green
 ■ = navy blue
 x = off-white
 o = green



End here repeat Beg here

Front

Work same as for back. When work measures 27 – 30 – 37 – 42 – 46 – 54 cm (10.6-11.8-14.6-16.5-18.1-21.3 in), slip 16 – 16 – 18 – 18 – 20 – 20 mid sts on holder. Finish each side separately. Bind off at neck edge every 2nd row 1x4 – 4 – 5 – 5 – 5 – 5, 1 – 1 – 1 – 2 – 2 – 2x2, and 1 – 2 – 2 – 1 – 1 – 2x1 st. When work measures same as back, bind off.

Work same for the other side, rev all shaping.

Sleeve

Using needles size 2 ½ mm and navy blue yarn, cast on 64 – 70 – 74 – 80 – 84 – 90 sts. Work in rnds 3 cm (1.6 in) in K1,P1 rib. Change to needles size 3 mm. Cont working in St st as foll: 3 rnds in white, change to green yarn. When work measures 9 – 11 – 13 – 13 – 13 – 14 cm (3.5-4.3-5.1-5.1-5.1-5.5 in), cont working back and forth until sleeve measures 10 – 12 – 14 – 15 – 15 – 16 cm (4-4.7-5.5-5.9-5.9-6.3 in). Bind off.

Finishing: Join shoulder seams.

Neck band: Using needles size 2½ mm and white yarn, pick or knit up 80 – 84 – 92 – 98 – 102 – 106 sts. Knit 1 rnd. Work 5 – 6 – 6 – 6 – 7 – 7 cm (2-2.4-2.4-2.4-2.8-2.8 in) in K1,P1 rib. Bind off rather loosely in rib. Fold neck band in double, and sew on WS.

Sew on sleeves.

Viking Bjørk

Poncho

1203-19

Size:	2	4/8	8/12 yrs
Length, approx.	28	35	45 cm
	11	13.8	17.7 in

ALTERNATIVE YARN: Viking Bjørk (90% cotton, 10% merino wool, superwash), Viking Alpaca/Silk (50% alpaca, 50% silk), 50 g ball

Pink, 564	2	2	3 balls
White, 500	1	1	2 balls
Dark Violet, 569	1	1	2 balls
Mint Green, 527	1	1	1 ball
Orange, 551	1	1	1 ball
Cherry, 563	1	1	1 ball
Green, 537	1	1	2 balls

Circular needle and double pointed needles size 3 mm – US 2 or 3 – UK/Canadian 11

Gauge: 25 sts = approx. 10 cm (4 in) over St st using needles size 3 mm. **Check your gauge to ensure success.**

STRIPES

2 rnds in white – 6 rnds in dark violet – 2 rnds in white – 6 rnds in green – 2 rnds in white – 6 rnds in orange – 2 rnds in white – 6 rnds in cherry – 2 rnds in white – 6 rnds in mint green, rep *-*.

PONCHO

Beg from hood. Using needles size 3 mm, cast on 125-139-155 sts Work back and forth 5 cm (2 in) in K1,P1 rib (will be eventually folded in double). Cont working back and forth in St st with stripes. Bind off 1 st at each edge every 4th row altog. 6-8-10 times = 113-123-135 sts. When work measures approx. 20-22-24 cm (7.9-8.7-9.4 in), measured from front edge folded in double. Bind off at each edge every 2nd row 13-14-15 sts, 4 times each side, and bind off rem 25-27-31 sts. Fold hood in double, and sew mid back seam (along the bound-off sts). Fold front rib in double, and sew on WS.

Beg mid front, using needles size 3 mm and pink yarn, pick or knit up approx 92-100-112 sts along the lower edge of the hood (Note! Don't pick sts from front rib). Work in rnds 3 cm (in) in K2,P2 rib. Knit 1 rnd, and place 4 markers as foll: one marker around mid front st – one marker around mid st on each shoulder – and one marker around mid back st. There are 22-24-27 sts between each marker + 4 marked sts. Cont working in rnds in St st with stripes (change clr mid back between inc). Inc 1 st both sides mid front and back markers every 2nd rnd. Inc 1 st both sides of markers on shoulders every 4th rnd. **Note!** Inc 1 st =M1. When work measures approx. 25-32-42 cm (9.8-12.6-16.5 in), or desired length (number of sts must be multiple with 4). Using pink yarn, work in rnds 3 cm (1.2 in) in K2,P2 rib. Weave in all ends on WS.