

Viking Baby Ull – Viking Nordlys

Tunic

1202-1

Size:	S	M	L	XL
Bust: approx.	86	90	99	107 cm
	33.9	35.4	39	42.2 in
Length: approx.	78	80	80	82 cm
	30.7	31.5	31.5	32.3 in

ALTERNATIVE YARN: Viking Baby Ull (100% merino wool, superwash), Viking pure Milk fiber (100% milk fiber), 50 g ball. Viking Nordlys (75% wool, superwash, 25% nylon), 100 g ball

Viking Baby Ull

Black, 303 7 8 8 9 balls

Viking Nordlys

Multiclr, 969 1 1 1 1 ball

Circular needle and double pointed needles size 3 mm – US 2 or 3 – UK/Canadian 11

Gauge: 28 sts = approx. 10 cm (4 in) over St st using needles size 3 mm. **Check your gauge to ensure success.**

Seed st

1st rnd: K1, P1

2nd rnd: Knit all p-sts, and purl all k-sts.

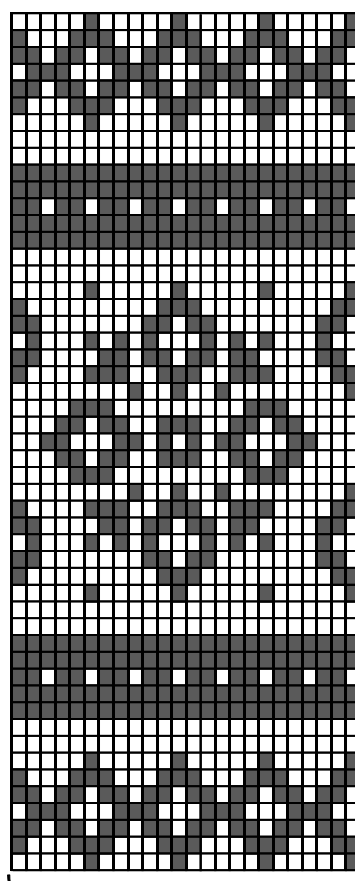
Rep 2nd rnd.

TUNIC

Using needles size 3 mm and black yarn, cast on 299-311-335-359 sts. Work in rnds 4 cm (1.6 in) in Seed st. Cont working in rnds in St st. Inc 1 st on first rnd. Place markers each side, 151-157-169-181 sts for front, and 149-155-167-179 sts for back. Dec 1 st both sides of the markers approx. every 3 cm (1.2 in) altog. 15 times. Dec before the marker: K2togtbl; after the marker: K2tog. 240-252-276-300 sts rem on a rnd. Cont working in St st without dec until work measures approx. 56-57-57-59 cm (22-22.4-22.4-23.2 in). Bind off 16 sts at each side (8 sts both sides of the markers). Next rnd: cast on 50-50-54-58 sts over the bound-off sts for armholes (= 308-320-352-384 sts). Cont working in rnds in St st with black yarn until work measures approx. 4 cm (1.6 in), measured from cast-on sts. Adjust evenly across 1st rnd number of sts to be 306-318-342-378 sts. Cont working in patt and dec as charted = 144-144-168-192 sts rem. Cont working in St st with black yarn until work measures approx. 5 cm (2 in), measured from last patt-rnd (or desired length). Dec evenly across the rnd number of sts to be 136-136-140-148 sts. Cont working in K2,P2 rib until collar measures approx. 15 cm (5.9 in). Bind off rather loosely. Fold collar in double.

Armhole edge

Using needles size 3 mm and black yarn, pick or knit up approx. 68 sts around armhole. Work in rnds 3 cm (1.2 in) in K2,P2 rib. Bind off. Weave in all ends on WS.



← Dec 48 sts evenly across the r
= 144-144-168-192 sts

← Dec 48 sts evenly across the r
= 192-192-216-240 sts

← Dec 48 sts evenly across the r
= 240-240-264-288 sts

← Dec 18-30-30-42 sts evenly across
= 288-288-312-336 sts

← = 306-318-342-378 sts

repeat

↑ Beg here

□ = black Babv Ull
■ = multiclr Nordlys

Viking Baby Ull – Viking Nordlys

Capelet, hat and socks

1202-2

Size:	Woman
Circumference: approx.	51 cm
	20.5 in

Width, lower edge of the capelet, approx 120 cm
47.2 in

ALTERNATIVE YARN: Viking Baby Ull (100% merino wool, superwash), Viking pure Milk fiber (100% milk fiber), Viking Nordlys (75% wool, superwash – 25% nylon), 100 g ball

CAPELET AND HAT

Viking Baby Ull

Black, 303 4 balls

Viking Nordlys

Multiclr, 969 1 ball

Circular needle and double pointed needles size 2½ and 3 mm – US 1 or 2 and 2 or 3 - UK/Canadian 13 or 12 and 11.

Gauge: 28 sts = approx. 10 cm (4 in) over St st using needles size 3 mm. **Check your gauge to ensure success.**

Seed st:

1st rnd: K1, P1

2nd rnd: Knit all p-sts, purl all k-sts

Rep 2nd rnd

HAT

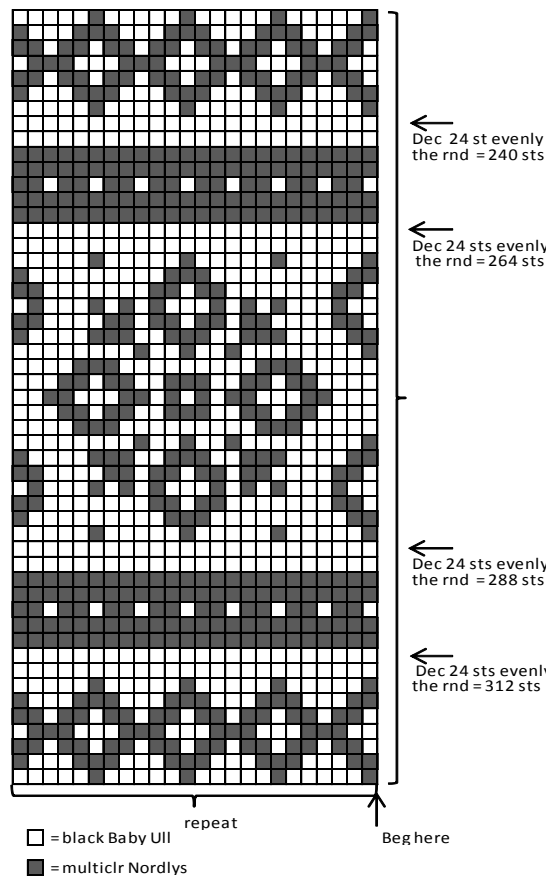
Beg from right ear flap: Using needles size 3 mm and black yarn, cast on 10 sts. Work back and forth in St st. Inc 1 st at each edge every 2nd row until you have 32 sts on a row. When ear flap measures approx. 10 cm (4 in), put work aside, and knit same for left ear flap. Using a short circular needle size 3 mm, cont working in rnds in St st with black yarn: Work sts over one ear flap, cast on 57 sts (= front), work sts over the other ear flap, and cast on 23 sts (= back) = 144 sts on a rnd. Work 6 rnds in St st, **but** work K1,P1 rib over the cast-on sts mid front and back. Cont working in rnds in patt as charted.

When patt is ready, cont working in St st with black yarn until work measures approx. 17 cm (6.7 in) (measured mid front). Beg crown dec: *K4, K2tog*, rep *-* across the rnd. Work 2 rnds without dec. Rep dec every 3rd rnd with 1 st less between each dec until 48 sts rem. Work 2 rnds in St st. Next rnd: Knit all sts tog in pairs = 24 sts rem. Break yarn, thread through rem sts, pull tightly, and weave in on WS. Make a pom-pom using multicl Nordlys and fasten on top.

CAPELET

Beg from lower edge. Using needles size 3 mm and black yarn, cast on 335 sts. Work in rnds 4 cm (1.6 in) in Seed st. Knit 1 rnd, and inc 1 st. Work 5 rnds in St st. Cont working in patt and dec as charted. When patt is ready, you have 240 sts on a rnd. Cont working in rnds in St st with black yarn. Beg dec after 2 cm (0.8 in), *K4, K2tog*, rep *-* across the rnd = 200 sts rem. Work 3 cm (1.2 in) more, and rep dec with 3 sts between dec = 160 sts rem. When work measures approx. 23 cm (9.1 in), cont working in rnds in K2,P2 rib with black yarn. When collar measures approx. 15 cm (5.9 in), bind off rather loosely. Weave in all ends on WS.

PATTERN FOR CAPELET



Socks

Size:	Woman
Foot length: approx.	25 cm
	9.8 in

Viking Baby Ull

Black, 303 2 balls

Viking Nordlys

Multicl, 969 1 ball

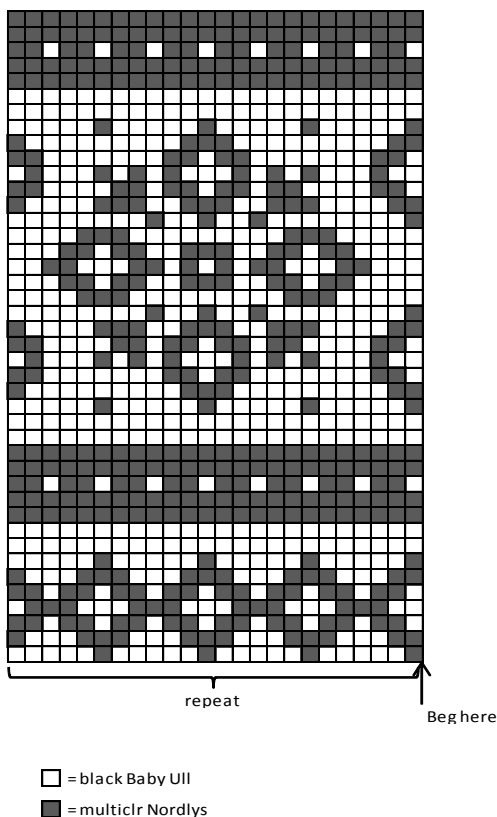
Circular needle and double pointed needles size 2½ and 3 mm – US 1 or 2 and 2 or 3 – UK/Canadian 13 or 12 and 11

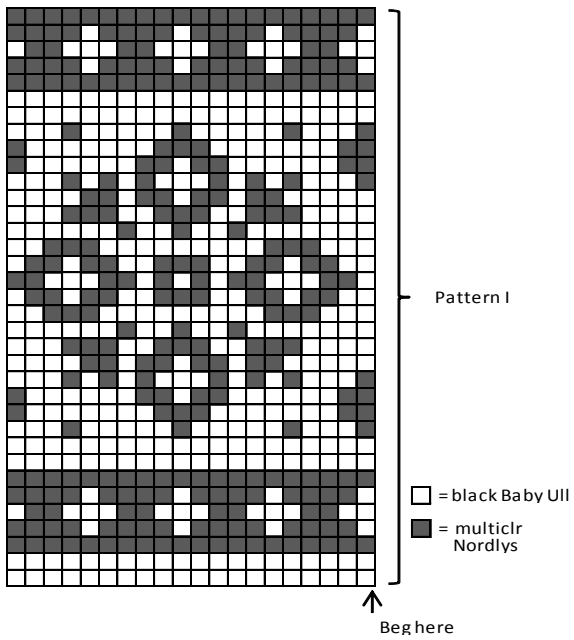
Gauge: 28 sts = approx. 10 cm (4 in) over St st using needles size 3 mm. **Check your gauge to ensure success.**

SOCKS

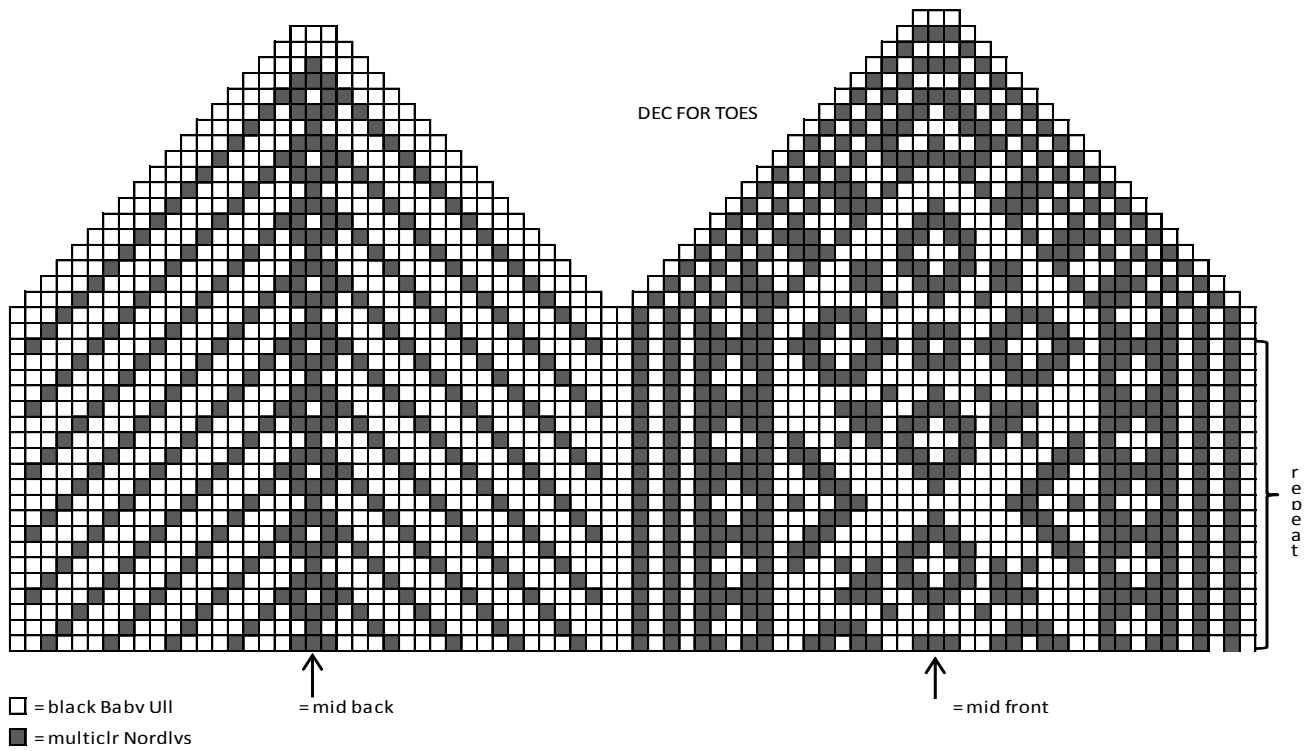
Using needles size 3 mm and lack yarn, cast on 80 sts. Work in rnds 3 cm in K1,P1 rib. Cont working in patt I as charted, and after that in patt II until work measures approx. 20 cm (7.9 in). Work in St st for heel over half of the sts, using black yarn: Work 6 cm (2.4 in) back and forth in patt as charted. Cont as foll: Beg from RS, knit until 13 sts rem on the needle, sl 1 st, K1, pss. Turn, purl until 13 sts rem on the other side, P2tog. Turn, knit until 12 sts rem. Dec 1 st same as before. Cont working in the same way until all sides-sts have been dec. Pick or knit up with black yarn approx. 16 sts from both sides of the heel (next rnd: ktbl). Cont working in rnds in patt II, place markers each side, 41 sts for the front, and 39 sts for sole. Dec 1 st at each side (= sts for sole), 1 st before 1st marker, and 1 st after 2nd marker (dec = K2tog). Rep dec altog. 3 times = 80 sts rem on a rnd. Cont working in rnds in patt until foot measures approx. 23 cm (9.1 in) (or desired length before starting dec for toes). Dec as charted. Break yarn, thread through rem sts, pull tightly, and weave on WS.

PATTERN FOR HT





PATTERN II



Viking Nordlys

Cowl, hat and wristwarmers 1202-3

Size:	Woman
Circumference: approx.	50 cm 19.7 in
Length: approx.	145 cm 55.2 in

ALTERNATIVE YARN: Viking Nordlys (75% wool superwash, 25% nylon), 100 g ball. Viking Baby Ull (100% merino wool, superwash), Viking pure Milk fiber (100% milk fiber), 50 g ball

Multiclr, 923 2 balls

Circular needle and double pointed needles size 3 and 4 – US 2 or 3 and 6 – UK/Canadian 11 and 8

Gauge: 28 sts = approx. 10 cm (4 in) over St st using needles size 3 mm. **Check your gauge to ensure success.**

COWL

Using needles size 4 mm, cast on 40 sts. Knit 1 row. Cont as foll: Beg with RS-row, X *K1 – 2 yo*, rep *-* across the row, end with K1. Next row: Purl, sl yarn-overs from the needle. Knit 1 row, purl 1 rowX. Rep X-X until the end. When scarf measures the given length, bind off. Sew cast-on and bound-off edges together to form a ring. Weave in all ends on WS.

HAT

Using needles size 3 mm, cast on 140 sts. Work in rnds 3 cm (1.2 in) in St st. Purl 1 rnd (= folding edge) + 3 cm (1.2 in) in St st. Knit 1 rnd, inc evenly across the rnd number of sts to be 160 sts. Cont working in rnds in St st until work measures approx. 23 cm (9.1 in). Beg dec for crown: *K6, K2tog*, rep *-* across the rnd. Work 2 rnds without dec. Rep dec every 3rd rnd, with 1 st less between each dec until 40 sts rem. Next rnd: Knit all sts tog in pairs = 20 sts. Break yarn, and thread through rem sts. Fold lower edge in double, and sew on WS. Weave in all ends on WS.

WRISTWARMERS

Using needles size 3 mm, cast on 50 sts. Work 4 rnds in K1,P1 rib. Cont working in rnds in St st until work measures approx. 15 cm (5.9 in). Place markers each side. Inc for thumb gusset: K2, M1 – K1 – M1. Work 2 rnds without inc. Next rnd: Inc same as before, but with 3 sts between inc sts. Rep inc until you have 11 sts for the gusset. Sl 11 gusset sts on holder, and cast on 3 sts over the gusset = 52 sts. Cont working in rnds in St st until work measures approx. 4 cm (1.6 in) measured from the thumb. Work 3 rnds in K1,P1, bind off.

Thumb: Slip sts from holder on needles size 3 mm, pick up 3 sts from cast-on sts + 2 sts from each side = 18 sts. Work 4 rnds in K1,P1 rib. Bind off.

Work same for the other wristwarmer, with thumb on the opposite side.

Viking Baby Ull – Viking Nordlys

Scarf 1202-4

Size:	Woman
Length: approx.	150 cm 59.2 in

ALTERNATIVE YARN: Viking Nordlys (75% wool superwash, 25% nylon), 100 g ball. Viking Baby Ull (100% merino wool, superwash), Viking pure Milk fiber (100% milk fiber), 50 g ball

Viking Baby Ull

Black, 303

2 balls

Viking Nordlys

Multiclr, 911

2 balls

Circular needle and double pointed needles 3 mm – US 2 or 3 – UK/Canadian 11

Gauge: 28 sts = approx. 10 cm (4 in) over St st using needles size 3 mm. **Check your gauge to ensure success.**

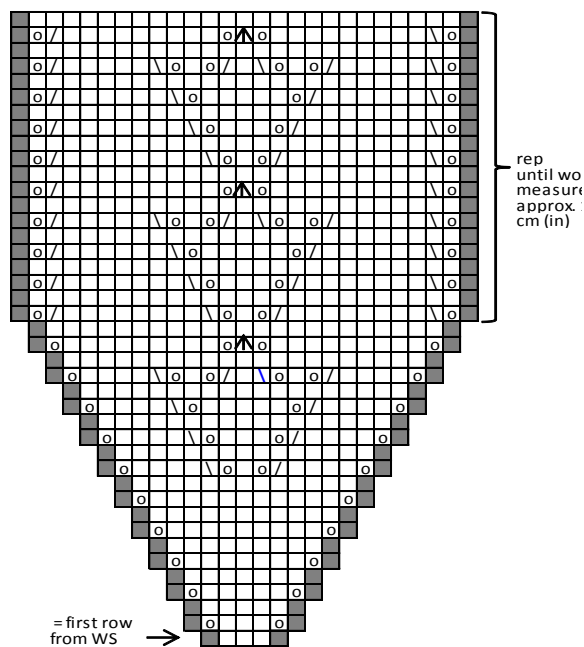
SCARF

Using needles size 3 mm and black yarn, cast on 5 st. Work in patt and inc as charted. When work measures approx. 150 cm (59.2 in), dec as foll: Beg from RS, K1 (= selvage st) – 1 yo – K3togtbl, knit until 4 sts rem, K3tog – 1 yo – K1. Rep dec every 2nd row (cont working in patt over mid sts). When 7 sts rem, work as foll: K1 – K2tog – K3togtbl – 1 yo – K1. Bind off rem sts.

Ruffled edge: Work with multiclr yarn over the straight edges, beg from RS: Pick or knit up along the edge from selvage sts approx. 1 st from each st (or approx. 550 sts). Purl 1 row. Work 4 rows in St st. Next row: *K4, M1*, rep *-* across the row. Purl 1 row + 4 rows in St st. Next row: *K5, M1*, rep across the row. Purl 1 row. Work 8 rows in St st. Next row: *K2 – 1 yo*, rep *-* across the row. Knit 1 row + 3 rows in Garter st. Bind off loosely on WS-row.

Finishing

Sew ruffled edge along the sides of the slanting edges. Make 2 tassels with black yarn, and attach to each end of the scarf. Weave in all ends on WS.



- = Knit on RS, purl on WS
- ▤ = 1 yo
- ▥ = K2tog
- ▧ = K2togtbl
- ▩ = Slip 1 st, K2tog, pss0
- ▨ = selvage st (knit every row)

Viking Nordlys – VikingBaby Ull

Bolero

1202-5

Size:	S	M	L	XL	XXL
Bust: approx.	80	88	96	106	118 cm
	31.5	35	38.8	41.8	46.4 in
Length: approx.	28	30	32	34	36 cm
	11	11.8	12.6	13.4	14.2 in
Sleeve length: approx	40	40	40	40	40 cm
	15.7	15.7	15.7	15.7	15.7 in

ALTERNATIVE YARN: Viking Nordlys (75% wool superwash, 25% nylon), 100 g ball. Viking Baby Ull (100% merino wool, superwash), Viking pure Milk fiber (100% milk fiber), 50 g ball

Viking Baby Ull

Off-White, 302 2 2 2 2
3 balls

Viking Nordlys

Multiclr, 911 2 2 2 3
3 balls

Circular needle and double pointed needles size 3 mm – US 2 or 3 – UK/Canadian 11

Gauge: 28 sts = approx. 10 cm (4 in) over St st using needles size 3 mm. **Check your gauge to ensure success.**

BOLERO

Beg from back. Using needles size 3 mm and multiclr yarn, cast on 102-114-126-138-154 sts. Work back and forth in St st. Inc 1 st at each edge inside selvage sts. Rep inc approx. every 2-2-2-2-2 cm (0.8-0.8-0.8-0.8-0.8 in) altog. 5 times = 112-124-136-148-164 sts. When work measures approx. 10-11-12-13-14 cm (4-4.3-4.7-5.1-5.5 in), bind off for armholes at each edge every 2nd row: 1x5-7-9-13-17, 0-0-1-1-2x3, 1-2-1-2-1x2, and 1-1-2-1-2x1 st = 96-100-104-106-110 sts. When work measures the given length, bind off.

Right front

Using needles size 3 mm and multiclr yarn, cast on 35-41-47-53-61 sts. Knit 1 row. Cont working back and forth in St st. Cast on every 2nd row as foll: End of each WS row (= front edge), cast on 3x3, 2x2, and 3x1 st, **same time** inc at side same as for back (= 5x1 st inside selvage st) = 56-62-68-74-82 sts. When work measures approx. 10-11-12-13-14 cm (4-4.3-4.7-5.1-5.5 in), bind off for armhole same as for back. When work measures approx. 13-14-15-16-17 cm (5.1-5.5-5.9-6.3-6.7 in), Dec 1 st for V-neck inside selvage st. Rep dec every 4th row altog. 16-16-16-18-18 times. When work measures same as back, bind off.

Work same for left front, rev all shaping.

Sleeves

Using needles size 3 mm and multiclr yarn, cast on 68-74-78-82-88 sts. Work in rnds in St st. Place a marker beg of rnd. Inc 1 st both sides of the marker. Rep inc approx. every 2 ½ cm (1 in) (same for all sizes), until you have 100-106-112-116-124 sts on a rnd. When work measures approx. 40 cm (15.7 in) (same for all sizes). Bind off 10-14-18-26-34 sts mid under arm (5-7-9-13-17 sts both sides of the marker). Cont working back and forth, and bind off beg of each row 0-0-1-1-2x3, 1-2-1-2-1x2, and 1-1-2-1-2x1 st. Bind off rem sts.

Work same for the other sleeve.

Finishing

Sew shoulder and side seams.

Ruffled edge with off-white yarn **Note! You can work the edge back and forth, or in rnds**

Ruffled edge worked in rnds: Beg mid back, pick or knit up approx 7 sts per each 2½ cm (1 in) over back neck edge – V-neck – back, and the other front until mid back (= approx 390-400-415-425-435 sts). Note! Number of sts must be multiple with 5 sts. Work 4 rnds in St st. Next rnd: *K5, M1*, rep *-* across the rnd. Work 6 rnds in St st. Next rnd: *K6, M1*, rep *-* across the rnd. Work 8 rnds in St st. Next rnd: *K2, 1 yo*, rep *-* across the rnd. Work 2 rnds in St st. Divide work mid back. Work 6 rows in Garter st. Bind off loosely.

Work same for ruffled edges around sleeves.

Sew on sleeves, and weave in all ends on WS.

Viking Nordlys

Shawl

1202-6

Size: **Woman**

ALTERNATIVE YARN: Viking Nordlys (75% wool superwash, 25% nylon), 100 g ball. Viking Baby Ull (100% merino wool, superwash), Viking pure Milk fiber (100% milk fiber), 50 g ball

Multiclr 967

3 balls

Circular needle size 3 mm – US 2 or 3 – UK/Canadian 11

Gauge: 28 sts = approx. 10 cm (4 in) over St st using needles size 3 mm. **Check your gauge to ensure success.**

SHAWL

Beg from upper edge. Using needles size 3 mm, cast on 2 sts. Work in Garter st:

1st row: (= RS) Knit each st twice = 4 sts

2nd row: (= WS) K1 – 1 yo – K2 – 1 yo – K1.

3rd row: K1 – 1 yo – K4 – 1 yo – K1 = 8 sts. Place a marker around 2 mid sts.

4th row: Knit all sts

5th row: K1 – 1 yo – K2 – 1 yo – K2 (= mid sts) – 1 yo – K2 – 1 yo – K1 = 12 sts.

6th row: Knit all sts.

7th row: K1 – 1 yo – knit until 2 mid sts – 1 yo each side of the mid sts – knit until 1 st rem – 1 yo – K1.

8th row: Knit all sts.

Cont working back and forth, and rep 7th and 8th row until work measures approx. 60 cm (23.6 in), measured mid back. Adjust the number of sts to be multiple with 3+4 sts.

Ruffled edge:

1st row: (= RS) K1 (= selvage st, knit every row), K1, * K1, P1, K1*, rep *-* across the row, end with K1 + 1 selvage st.

2nd row: (= WS) 1 selvage st, P1, *P1, 1 yo, K1, 1 yo, P1*, rep *-* across the row, end with P1 + 1 selvage st.

3rd row: (= RS) 1 selvage st + K1, *K1, 1 yo, P3, 1 yo, K1*, rep *-* across the row, end with K1 + 1 selvage st.

4th row: (= WS) 1 selvage st + P1, *P1, 1 yo, K5, 1 yo, P1*, rep *-* across the row, end with P1 + 1 selvage st.

Cont rep inc on each purl stripe (seen from RS) until edge measures approx. 3 cm (1.2 in). Bind off.

Viking Nordlys – Viking Baby ull

Scarf, hat and gloves 1202-7

Size:	Woman
Circumference:	50 cm 19.7 in
Scarf, length:	160 cm 63 in

ALTERNATIVE YARN: Viking Nordlys (75% wool superwash, 25% nylon), 100 g ball. Viking Baby Ull (100% merino wool, superwash), Viking pure Milk fiber (100% milk fiber), 50 g ball

Viking Baby Ull

Brown, 318 4 balls

Viking Nordlys

multiclr, 934 3 balls

Short circular needle and double pointed needles size 3 mm – US 2 or 3 – UK/Canadian 11

Crochet hook size 2 ½ mm – US B/1 or C/2 – UK/Canadian 12

Gauge: 28 sts = approx. 10 cm (4 in) over St st using needles size 3 mm. **Check your gauge to ensure success.**

Abbreviations: ch = chain stitch, sl st = slip stitch, sc = single crochet, dc = double crochet,

CROCHET SCARF

Using crochet hook size 2½ mm and multiclr yarn, ch49 .

1st row: (= WS): Skip 4 ch-sts, *9 dc to next st, skip 3 ch-sts, 1 sc to next st, skip 3 ch-sts*, rep *-* across the row, and end with 1 sc to last st. Turn.

2nd row: Ch3, skip first st, 4 dctog over next 4 dc, *ch4, 1 sc to next (mid st of 9 dc), ch3, 9 dctog over [next 4 dc, 1 sc, 4 dc]*, rep *-* across the row, end with 5 dctog over [last 4 dc and 1 ch-st]. Turn.

3rd row: Ch4, 4 dc to 5-dctog, *skip ch3, 1 sc to sc, skip 4 ch-sts, 9 dc to 9-dctog*, rep *-* across the row, end with 5 dc to 4-dctog. Turn.

4th row: Ch4, skip 1st dc * 9 dctog over [next 4 dc, 1 ch-st, 4 dc], ch4, 1 sc to next dc (mid st of 9 dc), ch3*, rep *-*, end with 1sc to 4th ch-st. Turn.

5th row: Ch1, skip 1st sc, *skip 4 ch-sts, 9 dc to 9-dctog, skip 3 ch-sts, 1 sc to sc*, rep *-*, last sc to first of 2 ch-sts.

Rep 2nd – 5th row until the end.

GLOVES

Using needles size 3 mm and brown yarn, cast on 54 sts. Work 5 cm (2 in) in rnds in St st. Place markers each side, 27 sts for both. Beg from one marker, K2, inc for thumb gusset: M1 – K1 – M1. Rep inc every 3rd rnd altog. 5 times = 11 sts for thumb. Slip 11 sts on holder, and cast on 3 sts over the gusset = 56 sts. Cont working in St st until work measures approx. 13 cm (5.1 in), measured from cast-on edge. Place markers at each side, 28 sts for each side. Work for fingers:

Index finger: Slip 8 sts from upper hand, and 8 sts from palm on needles size 3 mm = 16 sts. Divide sts on 3 needles. Work in St st until finger measures approx. 7 cm (2.8 in) (or take measure from your own finger). Next rnd: Knit all sts tog in pairs. Break yarn, thread through rem sts, pull tightly, and weave in on WS.

Middle finger: Slip next 7 sts from upper hand and palm on needles size 3 mm, and pick up 2 sts between middle and index

finger = 16 sts. Divide sts on 3 needles. Work in St st until finger measures approx. 8 cm (3.1 in). Dec same as for index finger.

Ring finger: Slip 7 sts from upper hand and palm on needles size 3 mm, and pick up 2 sts between ring and middle finger = 16 sts. Divide sts on 3 needles. Work in St st until finger measures approx. 7 cm (2.8 in). Next rnd: Knit all sts tog in pairs. Break yarn, thread through rem sts, pull tightly, and weave in on WS.

Little finger: Slip rem 12 sts on needles size 3 mm, and pick up 2 sts between little and ring finger = 14 sts. When finger measures approx. 6 cm (2.4 in), dec same as for the other fingers.

Thumb: Slip 11 sts from holder on needles size 3 mm, pick up 3 sts from cast-on sts, and 2 sts from each side = 18 sts. Divide sts on 3 needles. Work in St st until thumb measures approx. 6 cm (2.4 in). Next rnd: Knit all sts tog in pairs. Break yarn, thread through rem sts, pull tightly, and weave in on WS.

Crochet edge: Beg mid palm side, using crochet hook size 2½ mm and multiclr yarn, work 1 rnd sc around the edge. **Note!** Number of sts must be multiple with 8 + 1 sts (altog. 56 + 1 sts). Work back and forth 1st-5th rows same as for scarf. Break yarn, use tail to sew the mid seam. Weave in all ends on WS. Work same for the other glove, with thumb on opposite side.

HAT

Using needles size 3 mm and brown yarn, cast on 140 sts. Work 3 cm (in) in rnds in K1,P1rib. Knit 1 rnd, and inc evenly across the rnd number of sts to be 160 sts. Cont working in rnds in St st until work measures approx. 23 cm (9.1 in). Beg dec for crown: *K6, K2tog*, rep *-* across the rnd. Work 2 rnds without dec. Rep dec every 3rd rnd with 1 st less between each dec until 40 sts rem. Next rnd: Knit all sts tog in pairs = 20 sts. Break yarn, thread through rem sts, and weave in on WS.

Viking Nordlys

Scarf, hat and gloves 1202-8

Size:	Woman
Circumference:	approx. 50 cm 19.7 in

ALTERNATIVE YARN: Viking Nordlys (75% wool superwash, 25% nylon), 100 g ball. Viking Baby Ull (100% merino wool, superwash), Viking pure Milk fiber (100% milk fiber), 50 g ball

Hat, gloves and scarf

Multiclr, 964 2 balls

Circular needle and double pointed needles size 3 mm – US 2 or 3 - UK/Canadian 11

Crochet hook size 2½ mm – US B/1 and C/2 – UK/Canadian 12

Gauge: 28 sts = approx. 10 cm (4 in) over St st using needles size 3 mm. **Check your gauge to ensure success.**

SCARF

Beg from upper edge. Using needles size 3 mm, cast on 7 sts. Knit 1 row. Cont working back and forth in St st. Inc on every 2nd row (RS) as foll: Place a marker around mid st, with 3 sts on each side. Knit until mid st – 1 yo – K1 – 1 yo, K3, cast on 4 sts. Turn, purl all sts, and cast on 4 sts end of the row. Cont working back and forth, cast on 4 sts end of each row, and inc 1 st both sides of the mid st every 2nd row until work measures approx. 25 cm (9.8 in) (measured mid front). Bind off.

Crochet edge: Work across all edges of the scarf

1st row: Fasten the yarn with 1 sl st to mid front corner. Work sc

around the scarf, approx *1 sc to each st, skip 1 st*, rep *-* across the rnd. Turn.

2nd row: Ch1, skip first sc, *[1 sc, ch5, 1 sl st] to next sc, [1 sc, ch7, 1 sl st] to next sc, [1 sc, ch5, 1 sl st] to next sc, 1 sc to next 2 sc*, rep *-* across the rnd, end with 1 sl st to sc. Break yarn, and draw through last loop.

HAT

Using needles size 3 mm, cast on 140 sts. Work 3 cm (1.2 in) in rnds in St st. Purl 1 rnd (= folding edge) + 3 cm (1.2 in) in St st. Knit 1 rnd, and inc every across the rnd number of sts to be 160 sts. Cont working in rnds in St st until work measures approx. 23 cm (9.1 in). Beg crown dec: *K6, K2tog*, rep *-* across the rnd. Work 2 rnds without dec. Rep dec every 3rd rnd with 1 st less between each dec until 40 sts rem. Next rnd: Knit all sts together in pairs = 20 sts. Break yarn, and thread through rem sts. Fold lower edge in double, and sew on WS. Weave in all ends on WS.

GLOVES

Using needles size 3 mm, cast on 54 sts. Work 8 cm (in) in K1,P1 rib. Cont working in rnds in St st until work measures 12 cm (4.7 in). Place markers each side, 27 sts for both sides. Beg from a marker, K2, and inc for thumb gusset: M1 – K1 – M1. Rep inc every 3rd rnd altog. 5 times = 11 sts for thumb. Slip gusset sts on holder, and cast on 3 sts over the gusset = 56 sts. Cont working in St st until work measures approx. 19 cm (7.5 in), measured from cast-on edge. Place markers each side, with 28 sts for each side. Work fingers as foll:

Index finger: Slip 8 sts from upper hand and 8 sts from palm on needles size 3 mm = 16 sts. Divide sts on 3 needles. Work in St st until finger measures approx. 7 cm (2.8 in) (or measure your own finger). Next rnd: Knit all sts tog in pairs. Break yarn, thread through rem sts, and weave in on WS.

Middle finger: Slip next 7 sts from upper hand and palm on needles size 3 mm, and pick up 2 sts between middle and index finger. Divide sts on 3 needles. When finger measures approx. 8 cm (3.1 in), dec same as for index finger.

Ring finger: Slip 7 sts from upper hand and 7 sts from palm on needles size 3 mm, and pick up 2 sts between ring and middle finger = 16 sts. Divide sts on 3 needles. Work in St st until finger measures approx. 7 cm (2.8 in). Next rnd: Knit all sts tog in pairs. Break yarn, thread through rem sts, and weave in on WS.

Little finger: Slip rem 12 sts on needles size 3 mm, and pick up 2 sts between little and ring finger = 14 sts. When little finger measures approx. 6 cm (2.4 in), dec same as for other fingers.

Thumb: Slip 11 sts from holder on needles size 3 mm, pick up 3 sts from cast-on edge, and 2 sts from each side = 18 sts. Divide sts on 3 needles. Work in St st until thumb measures approx. 6 cm (2.4 in). Next rnd: Knit all sts tog in pairs. Break yarn, thread through rem sts, and weave in on WS.

Work same for the other glove, with thumb on the opposite side.

Viking Nordlys

Stockings

1202-9

Size

Shoe size	35/37	38/40	41/43
-----------	-------	-------	-------

ALTERNATIVE YARN: Viking Nordlys (75 % wool, 25 % nylon, Superwash), 100 g ball, Viking Baby ull (100% merino wool, superwash), Viking Pure Milk Fiber (100% milk fiber), 50 g ball

Multiclr, 964	2	2	2 balls
---------------	---	---	---------

Double pointed needles size 2 ½ and 3 mm – US 1 or 2 and 2 or 3 – UK/Canadian 13 or 12 and 11

Gauge: 28 sts = approx. 10 cm (4 in) over St st using needles size 3 mm. **Check your gauge to ensure success.**

LACE PATTERN FOR NORDLYS-STOCKINGS

Lace patt over 25 mid front sts:

1st rnd: P 6, K6, 1 yo, K1, 1 yo, K6, P6.

2nd rnd: P5, K2tog K5, 1 yo, K3, 1 yo, K5, K2togtbl, P5

3rd rnd: P4, K2tog, K5, 1 yo, K5, 1 yo, K5, K2togtbl, P4

4th rnd: P3, K2tog, K5, 1 yo, K7, 1 yo, K5, K2togtbl, P3

5th rnd: P2, K2tog, K5, 1 yo, K9, 1 yo, K5, K2togtbl, P2

6th rnd: P1, K2tog, K21, K2togtbl, P1

Rep 1st-6th row as long as there is enough sts left for the patt

STOCKINGS

Using needles size 2½ mm, cast on 108-116-124 sts. Divide sts on 4 dpn. Work in 5 cm (2 in) in rnds in K2,P2 rib. Change to needles size 3mm. Knit 1 rnd, and dec 1 st = 107-115-123 sts. Place a marker mid back between 2 k-sts = beg of the rnd. Cont working in rib and patt as foll: K1, * P2, K2*, rep *-* altog. 10-11-12 times, lace patt over 25 sts, K2,P2 rib altog. 10-11-12 times, K1. Cont working as established, and dec 1 st both sides of the marker every 5th rnd, before the marker: K2togtbl, after the marker: K2tog. Rep dec until work measures 36-38-40 cm (14.2-15-15.7 in), and you have 59-63-67 sts on a rnd. Work for heel over 28-30-32 sts mid back (= 14-15-16 sts both sides of the marker). Work back and forth 6-6-6 cm (2.4-2.4-2.4 in) in St st. Beg dec: Knit until 9-10-11 sts rem, turn, purl until 9-10-11 sts rem. Turn, knit until 10-11-12 sts rem, sl 1 st, K1, pssso. Turn, purl until 10-11-12 sts rem, P2tog. Turn, and cont dec in the same way with 1 st less before each dec until 10-10-10 mid sts rem. Beg from mid, K5, pick up 12 sts both sides of the heel + knit front sts, and end with 5 heel sts = 65-67-69 sts. Place markers each side = 4 sts before and 4 sts after the lace patt. Cont working in rnds in St st and lace patt. Work in St st until 4 sts rem before lace patt, P2, K2, lace patt over 25 sts, K2, P2, and St st over rem sts. **Note: dec 1 st at each side before 1st marker: K2togtbl, after 2nd marker: K2tog.** Rep dec every 3rd rnd until 59-63-67 sts rem. When foot measures 21-22-24 cm (8.3-8.7-9.4 in) (or 3 cm (1.2 in) less than desired length), place markers each side (between 2 sts), same number of sts for each side. Beg dec: work until 2 sts rem before 1st marker, K2togtbl, K2tog. Work until 2 sts rem before 2nd marker, and rep dec. Rep dec every 2nd rnd 3 times, and then every rnd until approx. 8 sts rem. Break yarn, thread through rem sts, and weave in on WS.

Work same for the other stocking.

Weave in all ends on WS.

Viking Nordlys

Gloves and wristwarmers

1202-10

Size Woman

YARN ALTERNATIVE: Viking Nordlys (75% wool, 25% nylon, Superwash), 100 g ball, Viking Baby ull (100% merino wool, superwash), Viking Pure Milk Fiber (100% milk fiber), 50 g ball

Gloves

Multicolor, 964 1 ball

Wristwarmers

Multicolor, 964 1 ball

Double pointed needles size 3 mm – US 2 or 3 – UK/Canadian 11

Crochet hook size 2½ mm – US B/1 or C/2 – UK/Canadian 12 + 2 crystal pearls

Gauge: 28 sts = approx. 10 cm (4 in) over St st using needles size 3 mm. **Check your gauge to ensure success.**

Lace patt over 25 mid front sts:

1st rnd: P6, K6, 1 yo, K1, 1 yo, K6, P6.

2nd rnd: P5, K2tog, K5, 1 yo, K3, 1 yo, K5, K2tog, P5

3rd rnd: P4, K2tog, K5, 1 yo, K5, 1 yo, K5, K2togtl, P4

4th rnd: P3, K2tog, K5, 1 yo, K7, 1 yo, K5, K2togtbl, P3

5th rnd: P2, K2tog, K5, 1 yo, K9, 1 yo, K5, K2togtl, P2

6th rnd: P1, K2tog, K21, K2togtl, P1

Rep 1st-6th rnds 6.

Gloves

Using needles size 3 mm, cast on 59 sts. Divide sts on 4 dpn. Place a marker beg of rnd = mid palm side. Work in rnds in rib and patt: K1, *P2, K2*, rep *-* altog. 4 times, lace patt over 25 sts, K2,P2 rib altog 4 times + K1. Cont working as established. When work measures 18 cm (7.1 in) (or desired length before the thumb) work as foll: work first sts in rib, lace patt over 25 sts, K2 r, P1, slip next 8 sts on holder, cast on 8 sts over the sts on holder, and work in rib over rem sts. Work 5cm (2 in) in rib and lace patt over all sts.

Place markers each side, 30 sts for upper side, and 29 sts for palm side.

Index finger: Slip 8 sts from upper side, and 8 sts from palm side on dpn size 4 mm, and cast on 2 sts between index finger and middle finger = 18 sts. Divide sts on 3 dpn. Work in rnds in St st until finger measures approx. 7 cm (2.8 in) (or measure your own finger). Next rnd: Knit all sts tog in pairs. Break yarn, and thread through rem sts.

Middle finger: Slip 8 sts from upper side and palm side on needles, pick up 2 sts between middle and index finger, and cast on 2 sts between middle and ring finger = 20 sts. Divide sts on 3 dpn. Work in St st until finger measures approx. 8 cm (3.1 in). Dec same as for index finger.

Ring finger: Slip 7 sts from upper side and palm side on needles. Pick up 2 sts between ring and middle finger, and cast on 2 sts between ring and little finger = 18 sts. Work same as for index finger.

Little finger: Slip rem 13 sts on needles. Pick 3 sts between little and ring finger = 16 sts. Work in St st until finger measures approx. 6 cm (2.4 in). Dec same as for the other fingers.

Thumb: Slip 8 sts from holder on needles. Pick up 8 sts from cast-on edge, and 2 sts from each side = 20 sts. Divide sts on 3 dpn. Work 6 cm (2.4 in) in St st. Dec same as for the other fingers.

Weave in all ends on WS, and sew up the possible holes between the fingers.

Work same for the other glove, with thumb on the opposite side.

WRISTWARMERS

Using needles size 3 mm, cast on 60 sts. Divide sts on 4 needles. Beg mid back: Work 2 cm (0.8 in) in rib as foll: K1, * P2, K2*, rep *-* until 3 sts rem, P2, K1. Dec 1 st mid front on last rnd = 59 sts. Cont working as foll: K1, *P2, K2* X 4, lace patt over 25 sts, *K2, P2* X 4, K1. Cont working as established until work measures approx. 18 cm (7.1 in), or desired length before the thumb. End with a complete lace patt report. Bind off rather loosely all p-sts purlwise and all k-sts knitwise.

Crochet Rose

Abbreviations:

ch = chain stitch, **sl st** = slip stitch, **sc** = single crochet, **dc** = double crochet, **hdc** = half double crochet

Ch4, join into a ring with 1 sl st.

1st rnd: Ch2, 7 sc into ring, end with 1 sl st to 2nd ch-st.

2nd rnd: Ch2, 1 sc to 1st ch, 2 sc each next 7 sts, end with 1 sl st to 2nd ch-st.

3rd rnd: Ch4, *skip 1 sc, 1 sc to next sc, ch3*, rep *-* altog. 7 times, end with 1 sl st to 1st ch-st of the 4 ch-sts = 8 ch-spaces

4th rnd: *1 sc, 1 hdc, 1 dc, 1 hdc, 1 sc*, rep *-* around each ch-space = 8 petals.

5th rnd: Worked behind the petals: 1 sl st to each next 3 sts, *ch3, 1 sc to prev rnd's mid dc of the petal*, rep *-* altog 7 times, ch3, end with 1 sl st to 1st ch-st = 8 ch-spaces

6th rnd: *1 sc, 1 hdc, 3 dc, 1 hdc, 1 sc*, rep *-* around each ch-space.

7th rnd: Again worked behind the petals; 1 sl st to each next 4 sts, *ch5, 1 sc to next petal's mid sc-st*, rep *-* altog. 7 times, end with 1 sl st to 4th sl st.

8th rnd: *1 sc, 1 hdc, 5 dc, 1 hdc, 1 sc*, rep *-* around each ch-space. Break yarn, and draw through last loop.

Sew rose on the wristwarmer, with a crystal pearl in the center. Work same for the other wristwarmer.

Viking Nordlys

Cardigan

1202-11

Size	L	M	L	XL
Width, approx.	89	96	104	113 cm
	35	38.8	41	44.5 in
Length, approx.	68	69	70	71 cm
	26.8	27.2	27.6	28 in
Sleeve length, approx.	48	50	51	52 cm
	18.9	19.7	20.1	20.5 in

ALTERNATIVE YARN: Viking Nordlys (75% wool, 25% nylon superwash), 100 g ball, Viking Baby ull (100% merino wool, superwash), Viking Pure Milk Fiber (100% milk fiber), 50 g ball

Multigrey, 911 5 5 6 6 balls

Double pointed needles and circular needles size 2½ and 3 mm – US 1 or 2 and 2 or 3 – UK/Canadian 13 or 12 and 11 + 1 zipper

Gauge: 28 sts = approx. 10 cm (4 in) over St st using needles size 3 mm. **Check your gauge to ensure success.**

CARDIGAN IN THE PHOTO HAS BEEN WORKED IN ROUNDS, AND CUT OPEN. IT CAN ALSO BE WORKED BACK AND FORTH, SEE BELOW. (Note, stripes on fronts will be wider than on back)

CARDIGAN

Using needles size 2½, cast on 248-268-292-316 sts. Work 2 rows back and forth in Garter st. Cont working 4 cm (1.6 in) in rnds in St st, but purl 5 first and last sts every rnd = mid front, will be cut open later on. Purl 1 rnd = folding edge, 4 cm (in) in St st. Change to needles size 3. Place markers each side, 62-67-73-79 sts for each front, and 124-134-146-158 sts for back. Cont working in St st. When work measures 15 cm (5.9 in) (same for all sizes) measured from folding edge, dec 2 sts each side every 3 cm (1.2 in), dec before a marker: K2togtbl, after a marker: K2tog = 4 sts. Rep dec altog 4 times. Work 5 cm (2 in) in St st. Inc 2 sts each side every 3 cm (1.2 in) altog. 4 times = 248-268-292-316 sts. When work measures approx. 4-4-5-5 cm (1.6-1.6-2-2 in) less than the given length (measured from folding edge), bind mid front 44-44-48-48 sts for neck edge. Cont working back and forth in St st. Bind off at each edge every 2nd row 1x3, 1x2, and 1x1 st. When work measures the given or desired length, bind off.

Sleeves

Using needles size 2½ mm, cast on 54-56-58-60 sts. Divide sts on 4 dpn. Purl 2 rnds. Cont as foll: 4 cm (1.6 in) in St st, purl 1 rnd, 4 cm (1.6 in) in St st. Change to needles size 3 mm. Knit 1 rnd, adjusting evenly across the rnd number of sts to be 74-78-82-86 sts. Place a marker mid under arm = beg of rnd. Cont working in St st. Inc 1 st both sides of the marker every 2 cm (0.8 in) until you have altog. 118-124-128-134 sts. When sleeve measures the given or desired length, turn work inside out. Work 8 rnds in St st, and purl 1 rnd. Bind off.

Work same for the other sleeve.

Finishing

Dampen the pieces slightly from WS. Sew 2 dense machine seams around armholes and mid front. Cut open between the seams. Fold lower edges of the body and sleeves in double, and sew on WS.

Front edges

Left edge: Using needles size 2½mm, pick up from RS approx. 180-182-182-184 sts along front edge. Work 8 rows back and forth in St st. Knit 1 row from WS. Bind off knitwise on WS row. Pick up same number of sts from WS. Work 6 rows in St st, bind off sts.

Work same for right front.

Sew zipper between the edges.

Sew on sleeves, and sew the seam allowance to cover the cut edges.

Neck band

Using needles size 2½ mm, pick up 130-130-136-136 sts around neck edge. Work 4 cm (1.6 in) in St st, knit 1 row from WS (= folding edge), and 4 cm (1.6 in) in St st.

Fold neck band in double, and sew on WS.

Weave in all ends on WS.

CARDIGAN WITHOUT CUTTING IT OPEN

Using needles size 2½ mm, cast on 238-258-282-306 sts. Work 2 rows back and forth in Garter st. Work 4 cm (1.6 in) in St st, knit 1 row from WS (= folding edge), and 4 cm (1.6 in) in St st.

Change to needles size 3 mm. Place markers each side, 57-62-68-764 sts for each front, and 124-134-146-158 sts for back. Cont working back and forth in St st. When work measures 15 cm (5.9 in), measured from folding edge (same for all sizes), dec 2 sts each side every 3 cm (1.2 in), before a marker: K2togtbl, after a

marker: K2tog = 4 sts. Rep dec altog 4 times. Work 5 cm (2 in) in St st. Inc 2 sts each side every 3 cm altog 4 times = 238-258-282-306 sts. When work measures 47 cm (18.5 in), measured from folding edge (same for all sizes), divide work at sidemarkers, and finish back and fronts separately.

Back

Cont working back and forth in St st until work measures the given length, and armhole measures 21-22-23-24 cm (8.3-8.7-9.1-9.4 in). Bind off, or leave sts on holder.

Front

Cont working back and forth in St st. When work measures 64-65-65-66 cm (25.2-25.6-25.6-26 in), measured from folding edge, bind off 17-17-19-19 sts for neck edge. Cont working in St st, and bind off at neck edge every 2nd row 1x3, 1x2, and 1x1 st. When work measures same as back, bind off or leave sts on holder. Work same for the other front, rev all shaping.

Sleeves

Using needles size 2½ mm, cast on 54-56-58-60 sts. Purl 2 rnds. Cont as foll: 4 cm (1.6 in) in St st, purl 1 rnd = folding edge, 4 cm (1.6 in) in St st. Change to needles size 3 mm. Knit 1 rnd, adjusting evenly across the rnd number of sts to be 74-78-82-86 sts. Place a marker mid under arm = beg of rnd. Cont working in St st. Inc 1 st both sides of the marker every 2 cm (0.8 in) until you have altog. 118-124-128-134 sts on a rnd. When sleeve measures the given or desired length (measured from folding edge), bind off sts rather loosely.

Work same for the other sleeve.

Finishing

Join shoulder seams.

Dampen lower edges of body and sleeves slightly from WS. Fold edges in double, and sew on WS.

Front edges

Left front: Using needles size 2½ mm, pick up from RS approx. 180-182-182-184 sts along front edge. Work back and forth 8 rows in St st. Bind off rather loosely knitwise on WS row. Work same for right front edge.

Sew the zipper. Sew on sleeves.

Neck band

Using needles size 2½ mm, pick up 130-130-136-136 sts around neck edge. Work back and forth 4 cm (1.6 in) in St st, knit 1 row from WS (= folding edge), and 4 cm (1.6 in) in St st.

Fold neck edge in double, and sew on WS.

Weave in all ends on WS.

Viking Nordlys – Viking Baby Ull

Afghan

1202-12

Size:

125x 165 cm

49.2x 65 in

ALTERNATIVE YARN: Viking Nordlys (75% wool superwash, 25% nylon), 100 g ball. Viking Baby Ull (100% merino wool, superwash), Viking pure Milk fiber (100% milk fiber), 50 g ball

Baby Ull

Brown, 318

5 balls

Nordlys

Multicolor, 961

9 balls

Crochet hook size 2 ½ mm – US B/1 and C/2 – UK/Canadian 12

Gauge: 26 sc = approx. 10 cm (4 in) in width using crochet hook size 2½ mm. **Check your gauge to ensure success.**

Abbreviations: ch = chain stitch, sl st = slip stitch, sc = single crochet, dc = double crochet

Squares (make 7 squares in width x 9 squares in height), or as many as you like. Each square measures approx. 18x18 cm (7.1 in x 7.1 in).

Using crochet hook size 2½ mm and multicl r yarn, ch6, join into ring with 1 sl st.

1st rnd: Ch3, 2 dc into ring, ch3, *3 dc, ch3*, rep *-* altog 3 times, end with 1 sl st to 3rd ch-st beg of rnd. Turn.

2nd rnd: Ch3, 2 dc around first ch-space, ch3, 3 dc to same ch-space, *ch, 3 dc around next ch-space, ch3, 3 dc into same ch-space *, rep *-* altog. 3 times, end with ch1 and 1 sl st to 3rd ch-st beg of rnd. Turn.

3rd rnd: Ch3, 2 dc around first ch-space, ch1, *3 dc around next ch-space, ch3, 3 dc into same ch-space, ch1, 3 dc around next ch-space, ch1*, rep *-* altog. 3 times, 3 dc around next ch-space, ch3, 3 dc into same ch-space, ch1, end with 1 sl st to 3rd ch-st beg of rnd. Turn.

4th rnd: Ch3, 2 dc around first ch-space, ch1, *3 dc around next ch-space, ch3, 3 dc into same ch-space, ch1, 3 dc around next ch-space, ch1, 3 dc around next ch-space, ch1*, rep *-* altog. 3 times, 3 dc around next ch-space, ch3, 3 dc into same ch-space, ch1, 3 dc around next ch-space, ch1, end with 1 sl st to 3rd ch-st beg of rnd. Turn.

5th-10th rnd: Cont working same as before (1 dc-cluster more between corners each rnd).

11th rnd: Work same as before, but with brown Viking Baby Ull. Crochet or sew squares tog using brown yarn (7 squares wide, and 9 squares high) = 63 squares (or as many squares as you like).

Viking Nordlys

Stockings 1202-13

Size: 35-37 38-40 41-43

ALTERNATIVE YARN: Viking Nordlys (75% wool superwash, 25% nylon), 100 g ball. Viking Baby Ull (100% merino wool, superwash), Viking pure Milk fiber (100% milk fiber), 50 g ball

Multicolor, 961 2 2 2 balls

Double pointed needles size 2 ½ and 3 mm – US 1 or 2 and 2 or 3 – UK/Canadian 13 or 12 and 11

Gauge: 28 sts = approx. 10 cm (4 in) over St st using needles size 3 mm. **Check your gauge to ensure success.**

SOCKS

Using dpn size 2½ mm, cast on 108-116-124 sts. Work in rnds 8 cm (3.1 in) in K1,P1 rib. Change to needles size 3 mm. Cont working in St st. Place a marker mid back. Dec 1 st both sides of the marker, before the marker: K2togt1, after the marker: K2tog. Rep dec every 6th rnd until work measures approx. 57-58-58 cm (22.4-22-22.8 in), and you have 52-56-60 sts on a rnd. Work for heel over half of the sts. Work back and forth 6-6-6 cm (2.4-2.4-2.4 in) in St st. Dec as foll: Work until 8-9-10 sts rem on one side, turn, and work until 8-9-10 sts rem on the other side. Turn, work until 1 st rem before turning, sl 1 st, K1, pssso. Turn, and work until 1 st rem before turning, P2tog. Cont working and dec in the same way until all side sts have been decreased. Pick up 11-13-13 sts from both sides of the heel = 58-64-66 sts. Cont working in rnds in St st over all sts. Dec 1 st each side of the heel every 2nd rnd until 52-56-60 sts rem. When foot measures 21-22-24 cm (8.3-8.7-9.4 in) (or 3 cm (1.2 in) less than desired length),

place markers each side (between 2 sts) with equal number of sts for both sides. Beg dec: Work until 2 sts rem before a marker, K2togtbl, K2tog, rep dec on the other side. Rep dec every 2nd rnd 3 times, and then every rnd until approx. 8 sts rem. Break yarn, thread through rem sts, and weave in on WS.

Viking Nordlys - Baby Ull

Stockings and sock 1202-14,15 and 16

Size

Shoe size	35/37	38/40	41/43
-----------	-------	-------	-------

ALTERNATIVE YARN: Viking Nordlys (75 % wool, 25 % nylon, Superwash), 100 g ball, Viking Baby ull (100% merino wool, superwash), Viking Pure Milk Fiber (100% milk fiber), 50 g ball

Number 14

Viking Baby Ull

Dark Grey, 315 2 2 3 balls

Nordlys

Multicolor, 963 1 1 1 ball

Number 15

Viking Baby Ull

Off-White, 302 3 3 4 balls

Light Violet, 370 1 1 1 ball

Nordlys

Multicolor, 912 1 1 1 ball

Number 16

Baby Ull

White, 300 3 3

4 balls

Double pointed needles size 2 ½ and 3 mm – US 1 or 2 and 2 or 3 – UK/Canadian 13 or 12 and 11

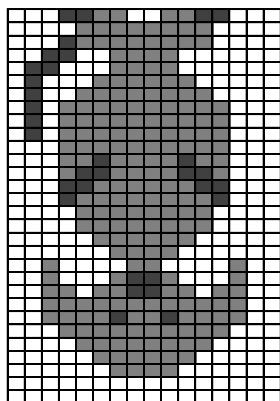
Gauge: 28 sts = approx. 10 cm (4 in) over St st using needles size 3 mm. **Check your gauge to ensure success.**

STOCKINGS WITH DOG MOTIF

Using needles size 2 mm and Nordlys multicl r, cast on 108-116-124 sts. Work in rnds 5 cm (2 in) in K2,P2 rib. Change to needles size 3 mm. Place a marker mid back, (= beg of rnd).

Cont as foll: Work 46-50-54 sts, every second with Nordlys multicl r and every second with grey Babyull, patt as charted over 16 sts, 46-50-54 sts with multicl r and grey yarn, same as beg of rnd. Cont working as established, but alternating multicl r and grey sts every 2nd rnd forming a prick patt both sides of the dog motif. **Same time**, dec 1 st both sides of the marker, before the marker: K2togtbl, after the marker: K2tog. Rep dec every 4th rnd until 52-56-60 sts rem. When patt is ready, cont working in prick patt. When work measures 36-38-40 cm (14.2-15-15.7 in), work for heel with pink yarn over 26-28-30 mid back sts (= 13-14-15 sts both sides of the marker). Work back and forth 6-6-6 cm (2.4-2.4-2.4 in) in St st. Dec as foll: Knit until 8-9-10 sts rem, turn, purl until 8-9-10 sts rem. Turn, knit until 9-10-11 sts rem. Sl 1 st, K1, pssso. Turn, purl until 9-10-11 sts rem. P2tog. Turn, and cont dec in the same way 1 st less end of each row until 10-10-10 mid sts rem. Beg rnd from mid needle, K5, pick up 11-13-13 sts from both sides of the heel + knit sts on top of the foot, knit last 5 sts = 58-64-66 sts. Place markers both sides of the heel. Cont working in rnds in St st and prick patt, dec **same time** 1 st both sides of the heel, before first marker: K2togtbl, after 2nd marker: K2tog. Rep dec every 3rd rnd until 52-56-60 sts rem. When foot measures 21-22-24 cm (8.3-8.7-9.4 in) (or 3 cm (in) less than desired), place markers each side (between 2 sts), equal number

of sts for both sides. Dec as foll: Work until 2 sts rem before 1st marker, K2togtbl, K2tog, rep dec on the other side. Rep dec every 2nd rnd 3 times, and then every rnd until 8 sts rem. Break yarn, thread through rem sts, and weave in on WS. Work same for the other sock. Weave in all ends on WS. Embroider black stitches on dog motif, see chart.



- = multicolor
- = grey
- = black (embroidered afterwards)

WHITE SOCKS

Using needles size 2½ mm and white yarn, cast on 108-116-124 sts. Work in rnds 5 cm (2in) in K2,P2 rib. Change to needles size 3 mm. Knit 1 rnd, and purl 1 rnd. Eyelet rnd: *K2tog, 1 yo*, rep *-* across the rnd. Knit 1 rnd, purl 1 rnd. Place a marker mid back. Cont working in St st. Dec 1 st both sides of the marker, before the marker: K2togtbl, after the marker: K2tog. Rep dec every 4th rnd until work measures 36-38-40 cm (14.2-15-15.7 in), and 52-56-60 sts rem on a rnd. Work for heel over mid back 26-28-30 sts (= 13-14-15 sts both sides of the marker). Work back and forth 6-6-6 cm (2.4-2.4-2.4 in) in St st. Dec as foll: knit until 8-9-10 sts rem, turn, purl until 8-9-10 sts rem.

Turn, knit until 9-10-11 sts rem. Sl 1 st, K1, pssso. Turn, and purl until 9-10-11 sts rem, P2tog. Turn, and cont dec in the same way with 1 st less end of each row until 10-10-10 mid sts rem. Beg rnd from mid needle, K5, pick up 11-13-13 sts from both sides of the heel + knit sts on top of the foot, knit last 5 sts = 58-64-66 sts. Place markers both sides of the heel. Work in rnds in St st, and dec 1 st both sides of the heel, before 1st marker: K2togtbl, after 2nd marker: K2tog. Rep dec every 3rd rnd until 52-56-60 sts rem. When foot measures 21-22-24 cm (8.3-8.7-9.4 in) (or 3 cm (1.2 in) less than desired length), place markers each side (between 2 sts), equal number of sts for both sides. Dec as foll: work until 2 sts rem before 1st marker, K2togtbl, K2tog, rep dec before 2nd marker. Rep dec every 2nd rnd 3 times, and then every rnd until 8 sts rem. Break yarn, thread it through rem sts, and weave in on WS.

Work same for the other stocking.

Weave in all ends on WS. Twist two cords using double yarn. Thread cords through eyelet rnds, and tie a bow mid back. You can also use a silk band instead of twisted cords.

SETESDAL SOCKS

Size Woman

Using needles size 2½ mm and off-white yarn, cast on 108 sts. Work in rnds 5 cm (2 in) in K2,P2 rib. Change to needles size 3 mm. Knit 1 rnd, and inc evenly across the rnd number of sts to be 120 sts. Place a marker around 1st st beg of rnd = mid back. Work in patt I as charted. When work measures approx. 20 cm (7.9 in), dec 1 st both sides of the marker mid back, before the marker: K2togtbl, after the marker: K2tog. Rep dec every 4th rnd. When patt I is ready, knit 1 rnd with off-white yarn, and inc evenly

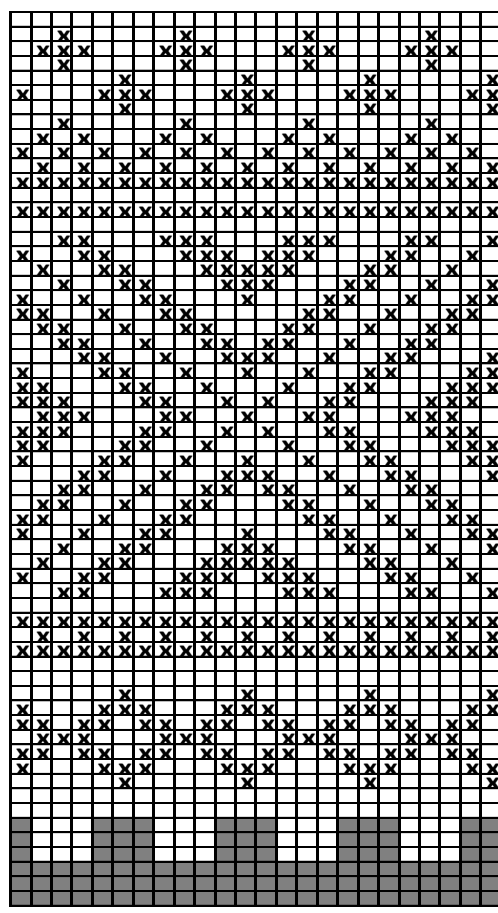
across the rnd number of sts to be 141 sts. Cont working and rep patt II. Cont dec mid back every 2nd rnd until 79 sts rem. When work measures 38 cm (15 in), or desired length, beg working for the heel. Work back and forth 6 cm (2.4 in) in St st over mid back 39 sts (= 19 sts both sides of the mid st), but dec evenly across 1st row number of sts to be 29 sts.

Dec as foll: knit until 10 sts rem, turn, purl until 10 sts rem. Turn, knit until 11 sts rem, sl 1 st, K1, pssso. Turn, purl until 11 sts rem, P2tog. Turn, and cont dec in the same way with 1 st less end of each row until 9 mid sts rem. Knit 9 sts, pick up 13 sts both sides of the heel + knit sts on top of the foot (worked all the time in patt II) = 75 sts. Place markers each side of patt II. Cont working in rnds in St st and patt II, and dec **same time** 1 st before 1st marker = K2togtbl, and after 2nd marker: K2tog. Rep dec every 2nd rnd altog. 3 times = 69 sts. When foot measures 22 cm (8.7 in) (or 3 cm (1.2 in) less than desired length). Place markers each side, with 29 sts for sole, and 40 sts on top of the foot. Work 1 rnd, and dec 1 sole st = 28 sts. Beg dec: Work until 2 sts rem before 1st marker, K2togtbl, K2tog, rep dec before 2nd marker. Rep dec every rnd 6 times on top of the foot and every 2nd rnd for sole until you have same number of sts left for both sides. Rep dec every rnd until 8 sts rem. (Note: Cont working in patt over sts for top of the foot). Break yarn, thread through rem sts, and weave in on WS.

Work same for the other sock.

Weave in all ends on WS.

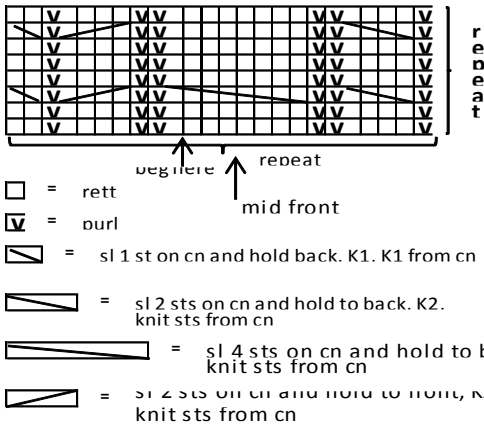
Pattern I over 24 sts



repeat ↑ beg here ↓

- = off-white
- ⊗ = multierev
- = light violet

Pattern II



Gauge: 28 sts = approx. 10 cm (4 in) over St st using needles size 3 mm. **Check your gauge to ensure your success.**

ANKLE WARMERS

Using needles size 3 mm, cast on 64 sts. Work in rnds approx. 13 cm (5.1 in) in K1,P1 rib. Knit 1 rnd, and inc evenly across the rnd number of sts to be 90 sts. Cont working in rnds in Garter st until work measures approx. 10 cm (4 in). Divide work, cast on 10 sts at one side, and cont working back and forth in Garter st. When work measures approx. 2 cm (0.8 in) measured from division, make a buttonhole over the cast-on sts: K3 – bind off 3 sts (cast on 3 sts over the bound-off sts) – K4. Cont working in Garter st over all sts, and make another buttonhole when work measures approx. 5 cm (2 in), and again after approx. 2 cm (0.8 in). When work measures approx. 10 cm (4 in), measured from division, bind off. Sew on 3 buttons.

Work same for the other ankle warmer, but with buttonholes on the other side.

Viking Nordlys

Hat 1202-17
Size: woman
Circumference: approx. 50 cm
 19.7 in

ALTERNATIVE YARN: Viking Nordlys (75% wool superwash, 25% nylon), 100 g ball. Viking Baby Ull (100% merino wool, superwash), Viking pure Milk fiber (100% milk fiber), 50 g ball
 multicl, 919 1 ball

Circular needle and double pointed needles size 3 mm – US 2 or 3 – UK/Canadian 11
 . + 2 buttons

Gauge: 28 sts = approx. 10 cm (4 in) over St st using needles size 3 mm. **Check your gauge to ensure success.**

HAT

Using needles size 3 mm, cast on 150 sts. Work back and forth in Garter st until work measures approx. 6 cm (2.4 in). Bind off first 10 sts, and cont working in rnds in Garter st. When work measures approx. 23 cm (9.1 in), measured from the bound-off sts, beg crown dec: *K12, K2tog*, rep *-.* across the rnd. Rep dec every 2nd rnd, with 1 st less between each dec until 14 sts rem. Break yarn, thread through rem sts, and weave in on WS. Fold edge in double on RS, and sew 2 buttons over the 10 bound-off sts (see photo).

Viking Nordlys

Ankle warmers 1202-18
Size: woman

ALTERNATIVE YARN: Viking Nordlys (75% wool superwash, 25% nylon), 100 g ball. Viking Baby Ull (100% merino wool, superwash), Viking pure Milk fiber (100% milk fiber), 50 g ball

multicl, 919 1 ball

Circular needles and double pointed needles size 3 mm – US 2 or 3 – UK/Canadian 11+ 3 buttons

Viking Nordlys

Socks 1202-19
Size: 2/4 6/8 10/12 yrs Woman Man

ALTERNATIVE YARN: Viking Nordlys (75% wool superwash, 25% nylon), 100 g ball. Viking Baby Ull (100% merino wool, superwash), Viking pure Milk fiber (100% milk fiber), 50 g ball

multicolor, 912: 1 1 1 1 1
 ball

Double pointed needles size 2 ½ and 3 mm – US 1 or 2 and 2 or 3 – UK/Canadian 13 or 12 and 11

Gauge: 28 sts = approx. 10 cm (4 in) over St st using needles size 3 mm. **Check your gauge to ensure success.**

SOCKS

Using dpn size 2½ mm, cast on 44-48-52-56-60 sts. Work 10-10-12-14-15 cm (4-4-4.7-5.5-5.9 in) in K2,P2 rib. Change to needles size 3 mm. Work 4 rnds in St st. Work for heel: Work back and forth 4-5-5-6-6 cm (1.6-2-2-2.4-2.4 in) in St st over half of the sts. Dec as foll: Knit until 7-8-8-9-10 sts on one side, turn, purl until 7-8-8-9-10 sts rem on the other side. Turn, work until 1 st rem before turning, sl 1 st, K1, pssso. Turn, purl until 1 st rem before the turning on the other side, P2tog. Cont working and dec in the same way until all side sts have been decreased. Pick up 9-11-11-13-13 sts both sides of the heel = 48-54-58-64-66 sts. Cont working in rnds in St st over all sts. Dec 1 st both sides of the heel every 2nd rnd until 44-48-52-56-60 sts rem. When foot measures 14-17-20-22-24 cm (5.5-6.7-7.9-8.7-9.4 in) (or 2-2-3-3-3 cm (0.8-0.8-1.2-1.2-1.2 in) less than desired length). Place markers each side (between 2 sts), equal number of sts for both sides. Dec as foll: Work until 2 sts rem before the marker, K2togtbl, K2tog, rep dec on the other side. Rep dec every 2nd rnd 3 times, and then every rnd until 8 sts rem. Break yarn, thread through rem sts, and weave in on WS.

Viking Nordlys

Socks

1202-20

Size: 2/4 6/8 10/12 yrs Woman Man

ALTERNATIVE YARN: Viking Nordlys (75% wool superwash, 25% nylon), 100 g ball. Viking Baby Ull (100% merino wool, superwash), Viking pure Milk fiber (100% milk fiber), 50 g ball

multiclr, 957: 1 1 1 1 1
ball

Double pointed needles size 2 ½ and 3 mm – US 1 or 2 and 2 or 3 – UK/Canadian 13 or 12 and 11

Gauge: 28 sts = approx. 10 cm (4 in) over St st using needs size 3 mm. **Check your gauge to ensure success.**

SOCKS

Using dpn size 2½ mm, cast on 44-48-52-56-60 sts. Work 4 cm (1.6 in) in K1,P1 rib (edge will be folded in double on WS). Change to needles size 3 mm. Work 4 rnds in St st. Work for heel: Work back and forth 4-5-5-6-6 cm (1.6-2-2-2.4-2.4 in) in St st over half of the sts. Dec as foll: Knit until 7-8-8-9-10 sts rem on one side, turn, purl until 7-8-8-9-10 sts rem on the other side. Turn, knit until 1 st rem before turning, sl 1 st, psso. Turn, purl until 1 st rem before the turning on the other side, P2tog. Cont working and dec in the same way until all side sts have been decreased. Pick up 9-11-11-13-13 sts both sides of the heel = 48-54-58-64-66 sts. Cont working in rnds in St st over all sts. Dec 1 st each side of the heel every 2nd rnd until 44-48-52-56-60 sts rem. When foot measures 14-17-20-22-24 cm (5.5-6.7-7.9-8.7-9.4 in) (or 3 cm (1.2 in) less than desired length), place a marker each side (between 2 sts), equal number of sts for each side. Dec as foll: Work until 2 sts rem before the marker, K2togtbl, K2tog, rep dec on the other side. Rep dec every 2nd rnd 3 times, and then every rnd until 8 sts rem. Break yarn, thread through rem sts, and weave in on WS. Fold upper edge in double, and sew on WS.

Viking Baby Ull – Viking Nordlys

Tunic, wristwarmers and hat 1202-21

Size:	2	4	6	8	10 yrs
Chest: approx.	57	60	65	68	73 cm
	22.4	23.6	25.6	26.8	28.7 in
Length: approx.	51	54	58	62	66 cm
	20.1	21.3	22.8	24.4	26 in
Sleeve length: approx	7	8	9	10	11 cm
	2.8	3.1	3.5	4	4.3 in

ALTERNATIVE YARN: Viking Nordlys (75% wool superwash, 25% nylon), 100 g ball. Viking Baby Ull (100% merino wool, superwash), Viking pure Milk fiber (100% milk fiber), 50 g ball

Viking Baby Ull

Brown, 318 4 5 5 6 6 balls

Viking Nordlys

Multicolor, 957 1 1 2 2 2 balls

Circular needle and double pointed needles size 2½ and 3 mm – US 1 or 2 and 2 or 3 – UK/Canadian 13 or 12 and 11

Gauge: 28 sts = approx. 10 cm (4 in) over St st using needles size 3 mm. **Check your gauge to ensure success.**

TUNIC

Using needles size 3 mm and brown yarn, cast on 192-204-216-228-240 sts. Work in rnds in St st. Inc on 2nd rnd number of sts to be 384-408-432-456-480 sts = knit each st twice. When work measures approx. 5 cm (2 in) (same for all sizes), knit all sts tog in pairs = 192-204-216-228-240 sts. Place markers each side 97-103-109-115-121 sts for front, and 95-101-107-113-119 sts for back. Purl 1 rnd – knit 1 rnd – purl 1 rnd – knit 1 rnd. Cont working and rep patt I as charted until work measures approx. 25-27-30-33-36 cm (9.8-10.6-11.8-13-14.2 in). Cont working in rnds in patt II as charted. When patt II is ready, cont working in St st with brown yarn until work measures 38-40-43-46-49 cm (15-15.7-16.9-18.1-19.3 in). Bind off 10 sts each side (5 sts both sides of the markers). Finish back and front separately.

Back

Cont working back and forth in K1tbl,P1 rib, but bind off at each edge every 2nd row 1x2, and 1x1 st = 79-85-91-97-103 sts rem. Cont working in rib until work measures 51-54-58-62-66 cm (20.1-21.3-22.8-24.4-26 in), and armhole measures approx. 13-14-15-16-17 cm 5.1-5.5-5.9-6.3-6.7 (in). Bind off.

Front

Work same as for back. When armhole measures approx. 9-10-11-11-12 cm (3.5-4-4.3-4.3-4.7 in), bind off mid 23-25-27-29-31 sts. Finish both sides separately. Bind off at neck edge every 2nd row 1x3, 1x2, and 1x1 st. When work measures same as back, bind off. Work same for the other side, rev all shaping.

Sleeves

Using needles size 2½ mm and brown yarn, cast on 72-78-84-90-96 sts. Work in rnds approx. 3 cm (1.2 in) in K1tbl,P1 rib (same for all sizes). Change to needles size 3 mm. Knit 1 rnd, inc 1 st. Place a marker mid under arm. Cont working in rnds in patt III as charted, and then keep rep patt I. When work measures approx. 7-8-9-10-11 cm (2.8-3.1-3.5-4-4.3 in), bind off 10 sts mid under arm (5 sts both sides of the markers). Cont working back and forth in patt I. Bind off at each edge beg of each row 1x2, and 1x1 st. Bind off rem sts. Work same for the other sleeve.

Finishing

Sew shoulder seams

Neck band: Using needles size 2½ mm and brown yarn, pick or knit up approx. 90-94-98-102-106 sts. Work approx. 2½-2½-3-3-3 cm (1-1-1.2-1.2-1.2 in) in K1tbl,P1 rib. Bind off rather loosely. Weave in all ends on WS. Sew on sleeves.

WRISTWARMERS

Using needles size 2½ mm and brown yarn, cast on 46-46-50-50-54 sts. Work in rnds 2 cm (0.8 in) in K1tbl,P1 rib. Change to needles size 3 mm, and multiclr yarn. Cont working in rnds in St st until work measures approx. 12-13-14-14-15 cm (4.7-5.1-5.5-5.5-5.9 in). Change to brown yarn, and work 2 cm (0.8 in) in rib. Bind off rather loosely.

HAT (2/4 – 6/8 – 10 yrs)

Using needles size 2½ mm and multiclr yarn, cast on 120-130-136 sts Work in rnds 3-3-4 cm (1.2-1.2-1.6 in) in K1tbl,P1 rib. Change to needles size 3 mm. Knit 1 rnd, adjusting evenly across the rnd number of sts to be 135-145-150 sts. Cont working in rnds in St st until work measures approx. 16-18-20 cm (6.3-7.1-7.9 in). Beg dec for crown: *K3, K2tog*, rep *-* across the rnd. Work 3 rnds without dec. Rep dec every 4th rnd with 1 st less between each dec until 54-58-60 sts rem. Work 3 rnds in St st. Next rnd: Knit all sts tog in pairs. Break yarn, thread through rem sts, pull tightly, and weave in on WS..

Abbreviations:

ch = chain stitch, sl st = slip stitch, sc = single crochet, dc = double crochet, tr = treble (2 yo on the hook),
 trtog = trebles together,
 trclst = treble cluster = (3 trtog, 1st and 2nd trtog, and 3rd and 4th trtog, 1 yo, draw through all loops on the hook)

Crochet edge

Work 1 rnd sc around the edge (number of sts must be multiple with 6), end with 1 sl st to 1st sc.

2nd rnd: Ch3, *ch1, skip 1 st, 1 dc to next st*, rep *-* across the rnd, end with 1 sl st to 3rd ch-st.

3rd rnd: Ch3, *ch1, 1 dc to prev rnd's next dc*, rep *-* across the rnd, end with 1 sl st to 3rd ch-st.

4th rnd: Ch4, 2 trtog to prev rnd's sl st, skip 1 dc, 1 trclst to next dc, *ch4, 2 trtog to 1st of 4 ch-sts, 1 trclst to next dc, skip 1 dc, skip prev rnd's 1 dc, 1 trclst to prev rnd's next dc*, rep *-* across the rnd. End with 1 sl st mid of a "flower".

5th rnd: Ch4, 2 trtog mid of "flower", ch3, 1 trclst to same st as 2 trtog, ch1, *mid next flower "flower" (1 trclst + ch3 + 1 trclst), ch1*, rep *-* across the rnd. End with 1 sl st to 4th ch-st.

6th rnd: Ch3, ch1, *1 dc round 3ch-space, ch1, 1 dc to trtog, ch1, 1 dc to trtog, ch1*, rep *-* across the rnd. End with 1 sl st to 3rd ch-st.

7th rnd: Ch3, ch1, *1 dc to prev rnd's dc, ch1*, rep *-* across the rnd. End with 1 sl st to 3rd ch-st.

8th rnd: Picot = *Ch3 + 1sc to 1st ch-st + 1 sc to prev rnd's ch-space*, rep *-* across the rnd. End with 1 sl st to 3rd ch-st

CAPELET

Beg from upper edge.

Using needles size 3 mm and violet Babyull, cast on 112-124-132-148 sts. Work in rnds 12-14-16-18 cm (4.7-5.5-6.3-7.1 in) in K2,P2 rib. Knit 1 rnd, adjusting evenly across the rnd number of sts to be 120-130-140-150 sts. Place a marker to every 10th st = 12-13-14-15 markers. Cont working in St st. Inc 1 st both sides of each marker. Rep inc every 3 cm (1.2 in) 4-5-6-7 times = 216-260-308-360 sts. When work measures 15-18-21-25 cm (5.9-7.1-8.3-9.8 in) (or desired length), measured from beg of St st. Bind off purlwise.

Using crochet hook size 2½ mm and Nordlys multiclr, work crochet edge around lower edge.

Hood

Using needles size 3 mm and violet Babyull, cast on 132-140-148-156 sts. Purl 1 row. Cont working in St st. When work measures 10-13-16-19 cm (4-5.1-6.3-7.5 in), bind off 1 st beg of each row until 3 sts rem, sl 1 st, K2tog, pssso. Break yarn, draw through last loop.

Using Nordlys multiclr work crochet edge along cast-on edge. Note: Work back and forth, and number of sts on 1st sc row must be multiple with 6.

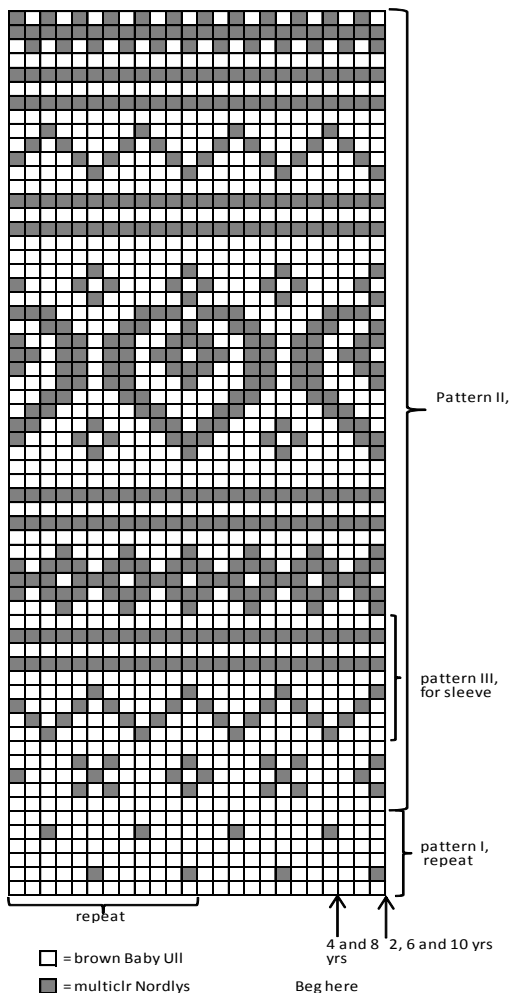
Finishing

Fold ribbed collar in double on RS.

Sew hood seam.

Sew hood inside collar (= on WS), adjust over mid back if needed.

Weave in all ends on WS.



Viking Nordlys and Babyull

Capelet with a hood 1202-22

Size	2/4	6/8	10/12	14 yrs
Circumference, approx.	44	46	48	50 cm
	17.3	18.1	18.9	in
Circumference of XXX, approx.	77	93	110	129 cm
	30.3	36.6	43.3	in

YARN ALTERNATIE: Viking Nordlys (75 % wool, 25 % nylon, Superwash), 100 g ball, Viking Baby ull (100% merino wool, superwash), Viking Pure Milk Fiber (100% milk fiber), 50 g ball

Viking Babyull

Dark Violet, 371 3 3 4 5 balls

Viking Nordlys

Multiclr, 965 1 1 1 1 ball

Long and short circular needle size 3 mm – US 2 or 3 –

UK/Canadian 11

Crochet hook size 2½ mm – US B/1 or C/2 – UK/Canadian 12

Gauge: 28 sts = approx. 10 cm (4 in) over St st using needles size 3 mm. **Check your gauge to ensure success.**

Viking Nordlys and Babyull

Sweater

1202-23

Size	4/6	8/10	12/14 yrs
Chest, approx.	73	81	86 cm
	28.7	31.9	33.9 in
Sleeve length, approx.	35	42	47 cm
	13.8	16.5	18.5 in
Length, approx.	52	60	68 cm
	20.5	23.6	26.8 in

ALTERNATIVE YARN: Viking Nordlys (75 % wool, 25 % nylon, Superwash), 100 g ball, Viking Baby wool (100% merino wool, superwash), Viking Pure Milk Fiber (100% milk fiber), 50 g ball

Viking Nordlys

Multicolor, 964 2 2 2 balls

Viking Babyull

Petrol, 329 2 2 3 balls
 Beige, 307 2 2 3 balls
 Light Violet, 370 1 1 2 balls
 Dark Violet, 371 1 1 2 balls

Double pointed needles and circular needle size 2 ½ and 3 mm – US 1 or 2 and 2 or 3 – UK/Canadian 13 or 12 and 11

Gauge: 28 sts = approx. 10 cm (4 in) using needles size 3 mm.

Check your gauge to ensure success.

SWEATER

Using needles size 2½ mm and multicl yarn, cast on 204-228-240 sts. Work in rnds in K2tbl,P2 rib. When work measures 4-5-6 cm (1.6-2-2.4 in), change to needles size 3 mm and beige yarn. Place markers each side, 103-115-121sts for back, and 101-113-119 sts for front. Cont working in St st and patt as charted. When work measures approx. 35-42-47 cm (13.8-16.5-18.5 in), or desired length before armholes, bind off 10-12-12 sts each side = 5-6-6 sts both sides of the markers. Note! End with a patt report prior to a stripe in multicl. Put work aside, and knit the sleeves.

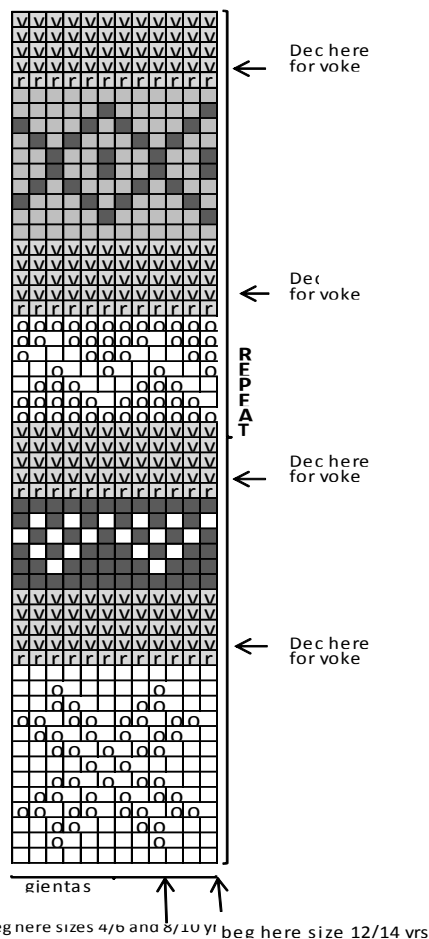
Sleeves

Using needles size 2½ mm and multicl yarn, cast on 48-52-52 sts. Work in rib, same as for body. Change to needles size 3 mm, and beige yarn. Knit 1 rnd (= 1st patt rnd), adjusting evenly across the rnd number of sts to be 48-60-60 sts. Place a marker mid under sleeve. Cont working in patt same as for body. Inc 1 st both sides of the marker every 1-1 ½-1 ½ cm (0.4-0.6-0.6 in), until you have altog. 90-100-112 sts on a rnd. When work measures 35-42-47 cm (13.8-16.5-18.5 in), end with same rnd as body. Bind off 10-12-12 sts mid under arm = 5-6-6 sts both sides of the marker. Slip rem sts on holder. Work same for the other sleeve.

Yoke: Slip all sts on same circular needle = 344-380-416 sts. Place markers at each 4 seam lines (between body and sleeves). Knit 1 rnd with multicl yarn, and dec evenly across the rnd 44-44-32 sts = 300-336-384 sts. Cont working in multicl yarn, and patt same as before. Dec according to the rnds pointed with arrows in the chart 36 sts 3-4-5 times, and then 48 sts 1-1-1 time = 144-144-156 sts, (see chart). When yoke measures approx. 16-18-20 cm (6.3-7.1-7.9 in) measured mid front, end with a complete patt report. Change to needles size 2½ mm and multicl yarn. Knit 1 rnd, adjusting evenly across the rnd number of sts to be 104-112-120 sts. Work 4-5-6 cm (1.6-2-2.4 in) in K2tbl, P2 rib. Bind off in rib rather loosely.

Finishing

Sew seams mid under arm. Weave in all ends on WS.



- = beige
- ▤ = petrol
- ▥ = multicl, knit
- ▧ = multicl, purl
- = dark violet
- ◻ = light violet

Viking Nordlys and Babyull

Capelet and hat

1202-24

Size	4/8 yrs
Circumference, approx.	43 cm
	16.9 in
Capelet , height- width, approx.	20X 35 cm
	7.9x13.8 in

YARN ALTERNATIVE: Viking Nordlys (75 % wool, 25 % nylon, Superwash), 100 g ball, Viking Baby ull (100% merino wool, superwash), Viking Pure Milk Fiber (100% milk fiber), 50 g ball

Nordlys

Multicl, 964 1 ball

Babyull

Petrol, 329 1 ball
 Beige, 307 1 ball
 Light Violet, 370 1 ball
 Dark Violet, 371 1 ball

Double pointed needles and circular needle size 2 ½ and 3 mm – US 1 or 2 and 2 or 3 – UK/Canadian 13 or 12 and 11

Gauge: 28 sts = approx. 10 cm (4 in) over St st using needles size 3 mm. **Check your gauge to ensure success.**

CAPELET

Using needles size 2½ mm and multiclør Nordlys, cast on 192 sts. Work 4 cm (1.6 in) in rnds in K2,P2 rib. Change to needles size 3 mm. Cont working in St st with patt I+II+III+IV as charted. Cont working 14 rnds in patt I (= without purl rnds). Change to needles size 2½ mm, and work 4 cm (1.6 in) in K2,P2 rib. Bind off. Weave in all ends on WS.

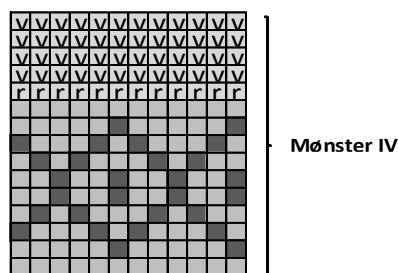
HAT

Using needles size 2½ mm and multiclør Nordlys, cast on 120 sts. Work in rnds 5 cm (2 in) in K2,P2 rib. Change to needles size 3 mm. Cont working in St st with patt I+II+III+IV as charted. **But** when 4 rnds remain of the last patt report, dec as foll: *P2, P2tog*, rep *-* across the rnd. Purl 1 rnd without dec. Next rnd: *P1, P2tog*, rep *-* across the rnd. Purl 1 rnd without dec. Purl all sts tog in pairs until 8 sts rem. Break yarn, thread through rem sts, pull tightly, and weave in on WS.

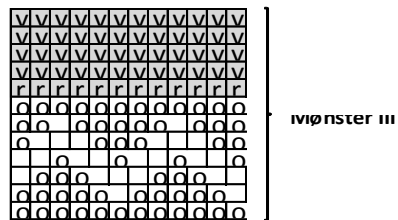
Make a pom-pom using petrol clr yarn (or any clr you like), diameter approx. 7 cm (2.8 in). Fasten on top.

Weave in all ends on WS.

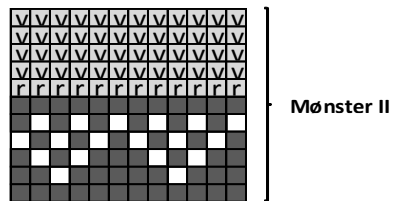
Dampen slightly, and stretch into shape.



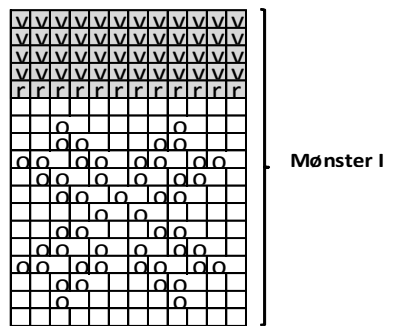
Mønster IV



Mønster III



Mønster II



Mønster I

gientas

beg her

- = beige
- ◻ = petrol
- ▣ = multifarge rett
- ▤ = multifarge vrang
- = mørk lilla
- ◻ = lvs lilla

Viking Nordsllys and Babyull

Tunic and tights 1202-25

Size	4	6	8	10 yrs
Chest, approx.	68	72	76	80 cm
	26.8	28.3	29.9	in
Sleeve length, approx.	31	34	38	42 cm
	12.2	13.4	15	in
Length, approx.	53	58	63	68 cm
	20.9	22.8	24.8	in
Circumference, approx.	56	61	64	67 cm
	22	24	25.2	in
Leg length, approx.	40	46	52	60 cm
	15.7	18.1	20.5	in

ALTERNATIVE YARN: Viking Nordsllys (75 % wool, 25 % nylon, Superwash), 100 g ball, Viking Baby ull (100% merino wool, superwash), Viking Pure Milk Fiber (100% milk fiber), 50 g ball

TUNIC

Viking Babyull

Light Violet, 370 6 6 7 8 balls

Nordsllys

Multicolor, 967 1 1 1 1 ball

TIGHTS

Nordsllys

Multicolor, 967 3 3 3 4 balls

Double pointed needles size 2½ and 3 mm – US 1 or 2 and 2 or 3 - UK/Canadian 13 or 12 and 11

Elastic for tights

Gauge: 28 sts = approx. 10 cm (4 in) over St st using needles size 3 mm. **Check your gauge to ensure success.**

TUNIC

Tunic has a ruffle along hem line, hood and sleeves (Note: Large number of sts in the beg!).

Using needles size 2½ mm and multiclør yarn, cast on 564-600-636-672 sts. Work 2 rnds *P3, R9*, rep *-* across the rnd. Dec for ruffle as foll: *P3, K2tbl, K5, K2tog*, rep *-* across the rnd. Knit 1 rnd without dec. Rep dec every 2nd rnd, with 2 sts less between each dec until 3 knit-sts rem between purl-sts. Dec as foll: *P3, sl 1 st, K2tog, pssso*, rep *-* across the rnd = P3, K1 across the rnd, 188-200-212-224 sts rem.

Change to needles size 3 mm and light violet yarn. Place markers each side, 94-100-106-112 sts for both back and front. Cont working in rnds in St st When work measures 37-41-45-49 cm (14.6-16.1-17.7-19.3 in), or desired length before armholes, bind off 6-7-8-8 sts both sides of the markers = 12-14-16-16 sts for each armhole. Finish back and front separately.

Back

Cont working back and forth in St st. Bind off at each edge every 2nd row 1x2, and 1x1 st = 76-80-84-90 sts. When work measures the given length, and armhole measures 16-17-18-19 cm (6.3-6.7-7.1-7.5 in), bind off, or slip sts on holder. .

Front

Work same as for back. When work measures 46-51-55-60 cm (18.1-20.1-21.7-23.6 in), divide work from mid for a split. Finish both sides separately. Cont working back and forth 4 cm (1.6 in) in St st. Bind off at neck edge 11-13-15-17 sts. Purl 1 row (= WS). Bind off at neck edge every 2nd row 1x3, 1x2, and 1x1 st. When front measures same as back, bind off or slip sts on holder. Work same for the other side, rev all shaping.

Sleeves

Using needles size 2½ mm and multiclør yarn, cast on 144-144-

156-156 sts. Work same for the ruffle as for body until 48-48-52-52 sts rem.

Change to needles size 3 mm, and light violet yarn. Place a marker mid under arm. Cont working in rnds in St st until sleeve measures the given length, or as desired, **but inc** 1 st both sides of the marker approx. every 1 cm (0.4 in) until you have altog.

90-96-100-106 sts on a rnd

Bind off 6-7-8-8 sts both sides of the marker = 12-14-16-16 sts.

Cont working back and forth in St st. Bind off at each edge every 2nd row 1x2, and 1x1 st. Bind off.

Work same for the other sleeve.

Finishing: Join shoulder seams.

Neck band

Using needs size 2½ mm and light violet yarn, knit or pick up approx. 90-94-98-102 sts around neck edge (not from split).

Work back and forth in St st until neck band measures approx. 3-3-4-4 cm (1.2-1.2-1.6-1.6 in). Beg from RS, and knit an eyelet row (= folding edge): K1,1 yo, *K2tog, 1 yo*, rep *-* until 1 st rem, K1. Work 3-3-4 4 cm (1.2-1.2-1.6-1.6 in) in St st. Bind off knitwise on WS row.

Fold neck band in double, and sew on WS, leaving each edge open for threading a cord into it.

Sew on sleeves.

Weave in all ends on WS.

Hood

Using needles size 2½ mm and multiclr yarn, cast on 360-384-396-408 sts. Work back and forth for ruffle same as for body until 120-128-132-136 sts rem. Change to needles size 3 mm.

Cont working in St st with light violet yarn. When work measures 7-7-8-8 cm (2.8-2.8-3.1-3.1 in), bind off 1 st each side every 4th row altog. 5-6-6-6 times = 110-116-120-124 sts. Cont working in St st until work measures 20-20-22-24 cm (7.9-7.9-8.7-9.4 in). Bind off beg of each row 10-11-11-11 sts = 5 times. Bind off rem sts. Sew mid back seam. Weave in all ends on WS. Sew hood inside neck and. Beg from mid back, adjust pref. over mid back.

Twist a cord using double light violet yarn, length approx. 1 m (39.4 in).

Thread cord into neck band tunnel.

Make 2 pom-poms, diameter approx. 6 cm (2.4 in), and fasten to each end of the cord.

TIGHTS

Beg from waist. Using needles size 2½ mm, cast on 156-172-180-192 sts. Work 6-7-8-8 cm (2.4-2.8-3.1-3.1 in) in K2,P2 rib.

Change to needles size 3 mm. Cont working in rnds in St st.

Place a marker mid back (= beg of rnd). Work short rows as foll:

Beg from mid back, knit 7 sts, turn, purl 14 sts. Turn, and work 7 sts more each side until you have altog. 10 turnings (= 5 times each side).

Cont working in rnds over all sts, and inc 2 sts mid back (= 1 st both sides of the marker). Rep inc approx. every 3 cm (1.2 in) (same for all sizes) until you have 162-178-186-200 sts on a rnd. When work measures approx. 19-21-23-24 cm (7.5-8.3-9.1-9.4 in), measured mid front, place a marker mid front, 82-89-93-100 sts for both back and front. Cont working in rnds in St st, **and** inc 2 sts mid back and front (= 1 st both sides of the markers = 4 sts across the rnd). Rep inc every 2nd rnd until you have 210-226-238-252 sts on a rnd.

Finish each leg separately.

Using another circular needle, knit sts from mid front marker until mid back marker. Knit 1 rnd, adjusting evenly across the rnd number of sts to be 104-112-120-128 sts. Place a marker beg of rnd = inner seam. Next rnd: K1, *P2, K2*, rep *-* across the rnd, end with K1, knit 1st and last st tog = mid st. Dec 1 st both sides of mid st every 2nd rnd 5 times: K2tog, work in rib until 2 sts rem before mid st, K2togtbl, (dec for purl-sts: P2tog both sides of mid). Rep dec every 2 cm (0.8 in) until 55-59-63-67 sts rem. When work measures approx. 40-46-52-60 cm (in), or desired

length, work 5-6-7-8 cm (2-2.4-2.8-3.1 in) in rib = to be folded eventually. Bind off in rib.

Work same for the other leg.

Fold waist rib in double, and sew on WS. Thread elastic on waist.

Weave in all ends on WS. Fold lower edges of legs on RS.

HATS

Size

6/10 yrs

Circumference, approx.

43 cm

16.9

in

YARN ALTERNATIVE: Viking Nordlys (75 % wool, 25 % nylon, Superwash), 100 g ball, Viking Baby ull (100% merino wool, superwash), Viking Pure Milk Fiber (100% milk fiber), 50 g ball

”SETESDALS HAT”

Viking Babyull

Off-white, 302

1 ball

Light Violet, 370

1 ball

Viking Nordlys

Multigrey, 912

1 ball

RIBBED HAT

Viking Nordlys

Multicolor, 967

1 ball

Viking Babyull

Light Violet, 370

1 ball

Circular needle size 2 ½ and 3 mm – US 1 or 2 and 2 or 3 – UK/Canadian 13 or 12 and 11

Gauge: 28 sts = approx. 10 cm (4 in) over St st using needles size 3 mm. **Check your gauge to ensure success.**

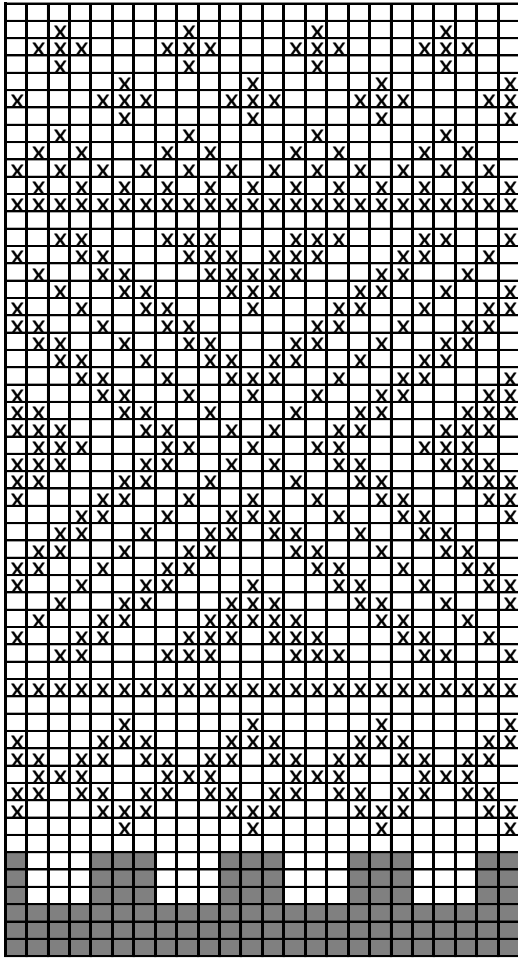
”SETESDALS” HAT

Using needles size 2½ mm and multiclr yarn, cast on 120 sts .

Work in rnds 5 cm (2 in) in K2tbl,P2 rib. Change to needles size 3 mm and light violet yarn. Cont working in St st and patt as charted.

When patt is ready, beg crown dec: *K4, K2tog*, rep *-* across the rnd. Work 2 rnds without dec. Next rnd: *K3, K2tog*, rep *-* across the rnd. Work 2 rnds without dec. Next rnd: *K2, K2tog*, rep *-* across the rnd. Work 1 rnd without dec. Next rnd: *K1, K2tog*, rep *-* across the rnd. Work 1 rnd without dec. Next rnd: Knit all sts tog in pairs = 10 sts. Break yarn, thread through rem sts, pull tightly, and weave in on WS. Make a pompon using multiclr yarn, diameter approx. 7 cm 2.8 (in), and fasten on top.

Pattern over 24 sts



repeat

↑
beg here

- = off-white
- ☒ = multigrev
- = light violet

RIBBED HAT

Using needles size 3 mm and multicl yarn, cast on 126 sts. Work 4 rnds as foll: *K9, (P1, K1, P1, K1, P1)*, rep *-* across the rnd. Change to light violet yarn. Cont working as established until work measures approx. 21 cm (8.3 in). Beg dec for crown: *K2tog, K5, K2tog, (P1, K1, P1, K1, P1)*, rep *-* across the rnd. Work 1 rnd without dec. Rep dec every 2nd rnd until 5 sts rem in knit-st panel. Work 1 rnd without dec. Next rnd: *K2tog, K1, K2tog, (K2tog, P1, K2tog)*, rep *-* across the rnd. Work 1 rnd without dec. Next rnd: *K3, (sl 1 st, K2tog, pss0)*, rep *-* across the rnd = 36 sts. Work 1 rnd without dec. Next 2 rnds: Knit all sts tog in pairs = 9 sts. Break yarn, and thread through rem sts. Turn hat inside out. Weave in all ends on WS. Make a pom-pom using multicl yarn, diameter approx. 7 cm (2.8 in), and fasten on top.