

Viking Odin

Blanket and cushion 1115-1

Size: Blanket 140 squares, approx. 123x 168 cm

48.8x .66.5 in

Cushion 32 squares, approx. 53x53 cm

20.9x20.9 in

ALTERNATIVE YARN: Viking Odin (100% wool, superwash), 100 g ball, Viking Eco Alpaca (100% alpaca), 100 g skein

Blanket

Multiclr, 857 18 balls

Cushion

Multiclr, 857 5 balls

Short circular needle size 5½ mm – US 9 – UK/Canadian 5

Gauge: 18 sts = approx. 10cm (4 in) over St st using needles size 5½ mm. **Check your gauge to ensure success.**

Domino square (each square measures approx. 13x13 cm (5.1x5.1 in):

Cast on 21 sts + 20 sts = 41 sts. K 1 row. Cont working back and forth in Garter st as foll: K19 sts, slip 1 st, K2tog, psso, K19. K 1 row without dec. K18 sts, slip 1 st, K2tog, psso, K18. K 1 row without dec. Cont working in the same way, rep dec every 2nd row, with 1 st less each side of the dec until 1 st rem. Break yarn, and draw through the rem st.

BLANKET

1st row: Work as described for domino square. Work next square tog with 1st square as foll: Cast on 21 sts, pick or knit up 20 sts along right side of square 1 = 41 sts. Knit 1 row, and finish square as described.

Break yarn, and fasten before each square. Cont working domino squares until you have 10 squares on a row.

2nd row: Pick or knit up 21 sts along upper edge of square 1 on 1st row, cast on 20 sts, turn, and knit 1 row. Finish the square in domino technique. Next square:

Pick or knit up 21 sts along upper edge of 2nd square on 1st row, and 20 sts along right edge of 1st square on 2nd row. Turn, knit 1 row, and finish square in domino technique. Cont working domino squares throughout the row.

3rd-14th row: Rep 2nd row = 140 squares

Weave in all ends on WS

CUSHION

Work same as for blanket, but with 4 squares on a row, and 8 rows in height = 32 squares.

Weave in all ends on WS. Sew side seams. Slip in inner cushion, and sew rem seam. You can also sew a 40 cm (in) zipper to the last seam.

Viking Bjørk

1115-2

Bottle decoration and coaster

Size: diameter, approx.

24 cm (9.4 in)

ALTERNATIVE YARN: Viking Bjørk (90% cotton, 10% merino wool), Viking Alpaca Silk (50% alpaca, 50% silk), 50 g ball

Red, 550

1 ball

Crochet hook size 2½ mm – US B/1 or C/2 – UK/Canadian 12

Gauge: 25 sc using crochet hook size 2½ mm = approx. 10 cm (4 in). **Check your gauge to ensure success.**

Abbreviations: ch = chain stitch, sl st = slip stitch, sc = single crochet, dc = double crochet,

BOTTLE DECORATION

Ch20, join into ring with 1 sl st. Ch1 = 1st sc, 1 sc to each ch st = 20 sc. Work 2 more rnds with 1sc to each st, beg rnds with ch1. Cont as foll:

1st rnd: *Ch5, skip 1 st, 1 sc to next st, ch4, insert hook into first of these ch sts, 1 sl st (= 1 picot), 1 sc to next st*, rep *-* across the rnd. End with 1 picot and 1 sl st to first ch st.

2nd rnd: Ch3, *1 sc to prev rnd's first ch-space, ch4, insert hook into first of these ch sts, 1 sl st (= 1 picot), 1 sc to same ch-space, ch6 *, rep *-* across the rnd. End with 1 sc to first ch-space.

3rd rnd: Ch7, *1 sc to first ch-space, ch4, insert hook into first of these ch sts, 1 sl st (= 1 picot), 1 sc to same ch-space, ch7*, rep *-* across the rnd. End with 1 picot and 1 sc to last ch-space.

Cont working in the same way, with ch1 more in each ch-space until you have ch9 in each ch-space. Cont working with ch9 in each ch-space until work measures approx. 15 cm (in) (or desired length).

Break yarn, and weave in on WS.

Weave in all ends on WS.

Sew red sequins over each picot between ch-spaces.

COASTER

Ch4, join into ring with 1 sl st. 1st st on every rnd = ch2, end each rnd with 1 sl st to 2nd ch beg of rnd).

1st rnd: 8 dc into ring (1st dc = ch2).

2nd rnd: 2 dc into each st (= 16 dc).

3rd rnd: *1 dc, 2 dc to next st*, rep *-* across the rnd = 24 dc

4th rnd: *2 dc, 2 dc to next st*, rep *-* across the rnd = 32 dc

5th rnd: *3 dc, 2 dc to next st*, rep *-* across the

rnd = 40 dc

6th rnd: *4 dc, 2 dc to next st*, rep *-* across the

rnd = 48 dc

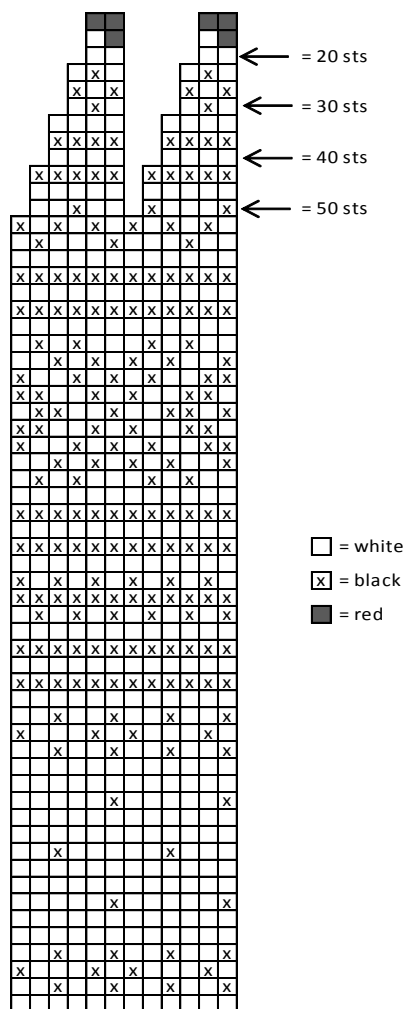
7th rnd: *5 dc, 2 dc to next st*, rep *-* across the

rnd = 56 dc

1st point of the star: Ch2 + 7 dc. Turn, 1 sl st to 1st dc, ch2 + 5 dc. Turn, and cont working back and forth with 2 dc less each row until 2 dc rem (= ch2 + 1 dc). Break yarn, and draw through the loop. Weave in on WS.

Beg second point of the star from next st, and work 6 points in the same way.

If you wish, you can sew red sequins in starshaped patt.



Viking Alpaca Silk

1115-3

Bottle decoration

Size: diameter approx. 25 cm (9.8 in)

ALTERNATIVE YARN: Viking Alpaca Silk (50% alpaca, 50% silk), Viking Bjørk (90% cotton, 10% merino wool), 50 g balls

Red, 450	1
ball	
Black, 403	1
ball	
White, 400	1
ball	

Double pointed needles size 3 mm – US 2 or 3 – UK/Canadian 11

+ sequins for embellishment

Gauge: 25 sts = approx. 10 cm (4 in) over St st using needles size 3 mm. **Check your gauge to ensure success.**

BOTTLE DECORATION

Using needles size 3 mm and black yarn, cast on 60 sts. Work 3 rnds in K1,P1 rib. Change to white yarn, and cont working in St st and patt as charted. Dec as charted. When patt is ready, cont working in K1,P1 rib with red yarn. When rib measures approx. 2 cm (0.8 in), bind off in rib. Weave in all ends on WS. Embellish the upper part with sequins (see photo).

Viking Balder 1115-4

Mat under Christmas tree / Poncho

Size: diameter approx. 180 cm (75.2 in)

ALTERNATIVE YARN: Viking Balder (100% wool, superwash), 100 g skein, Viking Naturgarn (100% wool), Viking Alpakka Superfine (100% alpaca), 50 g ball

Red 450 14 skeins

Long circular needle size 7 mm – US 10½ or 11 - UK/Canadian 2

+ 10 big wooden buttons

Gauge: 12 sts = approx. 10 cm (4 in) over St st using needles size 7 mm. **Check your gauge to ensure success.**

MAT UNDER CHRISTMAS TREE

Beg from upper edge.

Using needles size 7 mm, cast on 70 sts. Work back and forth in K2,P2 rib inside 6 sts at each edge = worked all the time in Garter st. Make a buttonhole on 5th row: Work 2 sts, bind off 2 sts, cast on 2 new sts over the bound-off sts on next row (K cast-on sts tbl on next row). Make rem buttonholes approx. every 8 cm (3.1 in).

When work measures approx. 20 cm (7.9 in), inc evenly across RS row the number of sts to be 113 sts. P 1 row (K edge sts). Cont working in patt as foll: Garter st over 6 edge sts, * K1, patt as charted*, rep *-* altog 5 times, end with K1, Garter st over 6 edge sts. Cont working in patt, and M1 both sides of k-sts between patt-reports (= 10 inc sts on a row). Rep inc every 2nd row altog. 15 times, and then every 4th row until work measures approx. 85 cm (33.5 in). Next row: Garter st over 6 edge sts, Seed st until 6 sts rem, Garter st over 6 edge sts, rep this row altog. 6 times. Bind off rather loosely. Weave in all ends on WS. Sew on buttons.

working in St st, and dec 1 st both sides of the marker: K2tog after the marker, and K2togtbl before the marker. Cont working in St st, and rep dec every 4th rnd until 6 sts rem. Break yarn, and thread through rem sts. Weave in all ends on WS.

Felting: Wash in a washing machine in 40-60°C, using a mild detergent. Bigger objects felt more than smaller ones, so you can wash the cone together with a towel or pair of jeans. Stretch and shape while still damp. Afterwards cone can be washed in fine wash program. Different washing machines produce different kind of felting result, test first with a swatch.

Viking Alpaca Sport 1115-6 CHRISTMAS GNOME COUPLE

Size:

approx. 40 cm (15.7 in)

ALTERNATIVE YARN: Viking Alpaca Sport (40% merino wool, 30% alpaca, 30% nylon), Viking Sportsgarn (100% wool), Viking Superwash (100% wool, superwash), Viking Sportsragg (60% wool, 20% acrylic, 20% nylon), 50 g ball

Red, 650	4
balls	
Grey, 615	2
balls	
Beige, 607	2
balls	
White, 602	2
balls	
Black 603	1
ball	
Yellow, 642	1
ball	
	use rest yarn, or

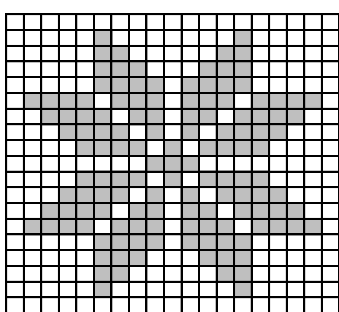
Pair of knitting needles, circular needle and double pointed needles size 3 and 3½ mm – US 2 or 3 and 4 – UK/Canadian 11 and 10 or 9
+ filling fiber, textile glue, 4 eyes.

Gauge: 23 sts = approx. 10 cm (4 in) over St st using needles size 3½ mm. **Check your gauge to ensure success.**

GNOME

Beg from head. Using dpn size 3½ mm and beige clr, cast on 52 sts. Work in rnds 12 cm (4.7 in) in St st (= head). Change to red yarn, and cont working in St st until work measures approx. 22 cm (8.7 in). Work for back/buttocks as foll: Slip sts from 1st and 4th needle (= 26 sts) on same needle, and work back and forth approx. 5 cm (2 in) in St st. Beg with RS row, K18, K2tog, turn, P10, P2tog. Turn, knit until 1 st rem before prev turning, K2tog. Turn, purl until 1 st rem before prev turning, P2tog. Cont working in the same way, dec 1 st at each edge until 10 sts rem. Divide rem 10 sts on 1st and 4th needles, and pick up 8 extra sts along the sides (= 13 sts

PATTERN over 19 sts



□ = P on RS,
K on WS
■ = K on RS,
P on WS

Viking Naturgarn 1115-5 Big, felted Christmas cone

Size: Length after felting _____ =
approx. 75 cm (29.5 in)

ALTERNATIVE YARN: Viking Naturgarn (100% wool), Viking Alpaca Superfine (100% alpaca), 50 g ball

Red, 650 7
balls

Circular needle and double pointed needles size 7 mm – US 10½ or 11 – UK/Canadian 2

Gauge: (before felting) 12 sts = approx. 10 cm (4 in) over St st using needles size 7 mm. **Check your gauge to ensure success.**

CHRISTMAS CONE

Using needles size 7 mm, cast on 82 sts. Work 3 rnds in K1,P1 rib. Cont working in St st until work measures approx. 7 cm (2.8 in) (= folding edge). Turn work inside out, and cont working in St st until work measures approx. 20 cm (7.9 in) (measured from cast on edge). Place a marker beg of the rnd (= mid back). Cont

on each 4 needles). Work 10 rnds in St st. Divide work into 2 pieces, 26 sts for each leg (dec = mid back). Work legs separately in rnds. When leg measures approx. 12 cm (4.7in), work 2 rnds with yellow yarn. Change to black yarn, and work 4 cm (1.6 in). Bind off. Work same for the other leg.

Arms

Beg from up. Using needles size 3½ mm and red yarn, cast on 24 sts. Work in rnds 14 cm (5.5 in) in St st. Change to beige yarn, and work 2½ cm (1 in). K all sts tog in pairs. Break yarn, and thread through rem sts, pull tightly and weave in on WS. Work same for the other arm.

Nose

Using needles size 3½ mm and beige yarn, cast on 8 sts. Work back and forth 2½ cm (1 in) in St st. Bind off.

Finishing

Weave in all ends on WS. Thread a length of yarn around neck (will be tightened later on). Turn inside out, and sew tog the ends of legs. Sew the seam between legs. Fill in the body with filling fiber. Tighten the thread around the neck, and weave in the ends properly. Thread a length of yarn to the cast-on edge, pull tightly, and weave in on top. Thread a length of yarn around the nose, and fill with filling fiber, pull tightly and sew nose on the front side of the head. Fill in now both arms, and thread a length of yarn for wrists to form hands. Sew arms on both sides of the body. You can sew hands joined tog mid front (see photo).

Hat

Using needles size 3½ mm and red yarn, cast on 64 sts. Work 3 rnds in K1,P1 rib. Cont working in rnds in St st until work measures approx. 9 cm (3.5 in). Beg dec: *K6, K2tog*, rep *-* across the rnd. Work 8 rnds without dec. Next rnd: *K5, K2tog*, rep *-* across the rnd. Work 8 rnds without dec. Rep dec every 9th rnd with 1 st less between dec until 16 sts rem. Next rnd: Knit all sts tog in pairs = 8 sts rem. Break yarn, thread through rem sts, pull tightly, and weave in on WS. Make a pompon using red yarn, and fasten on top.

Skirt

Using needles size 3½ mm and red yarn, cast on 120 sts. Work 6 rnds in Garter st. Cont working in rnds in St st with red yarn until work measures approx. 10 cm (4 in). Next rnd: *K8, K2tog*, rep *-* across the rnd. Work 4 rnds without dec. Next rnd: *K7, K2tog*, rep *-* across the rnd. Work 4 rnds without dec. Dec evenly across the rnd the number of sts to be 68 sts. Next rnd: *K2, 1 yo*, rep *-* across the rnd = eyelet rnd. Work 3 rnds in K1,P1 rib. Bind off in rib. Twist a cord using grey yarn, and thread through the eyelet rnd. Tie it on waist.

Sweater

Using needles size 3½ mm and white yarn, cast on 60 sts. Work 3 rnds in K1,P1 rib. Cont working in St st and patt I, rep as charted (beg from arrow) When work measures approx. 6 cm (2.4 in), end patt I as charted (7th rnd last). When patt I is ready, work front (31 sts) and back (29 sts) separately.

Back: Cont working back and forth in patt II as charted. Bind off with red yarn.

Front: Work same as for back. 4 rows before the patt is ready, bind off 13 mid sts for neck edge. Work each side

separately. Bind off 2 sts beg of next RS row. End same as for back, and bind off with red yarn.

Work same for the other side, rev all shaping.

Sleeves: Using needles size 3½ mm and white yarn, cast on 24 sts. Work 3 rnds in K1,P1 rib. Cont working in St st and patt I until work measures approx. 4 cm (1.6 in). End patt I same as for body. Cont working in patt II as charted. When patt II is ready, work measures approx. 12 cm (4.7 in). Bind off with red yarn. Work same for the other sleeve.

Sew shoulder seams.

Neck band: Using needles size 3½ mm and red yarn, pick or knit up approx. 36 sts around neck edge. Work 3 rnds in K1,P1 rib. Bind off in rib.

Sew on sleeves, and weave in all ends on WS.

Make the beard and moustache from filling fiber, and use textile glue for sticking on them, or you can also use double yarn to tie hair and beard in fringe style. Glue hair also around the lower edge of the hat. Sew hat across the hairline with overcast sts. Use off-white yarn to make approx. 40-45 cm (15.7-17.7 in) long plaits for mommy gnome. Fasten from mid front, and along each side of the face. Use red or black yarn for embroidering mouth, and black/white for eyes, or use buttons

NOTE!

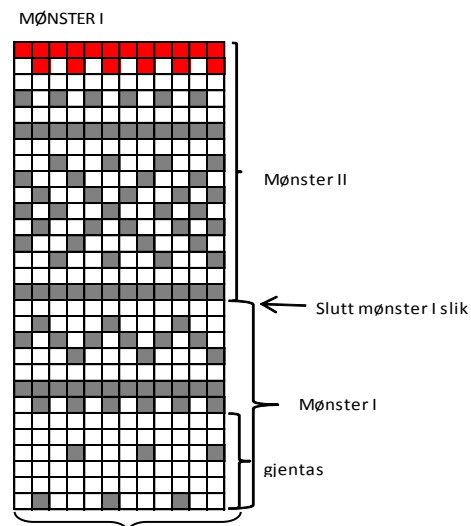
Mønster I = Pattern I

Mønster II = Pattern II

Slutt mønster I slik... = End patt I here'

.

□ = white ■ = grey ■ = red



Viking Naturgarn 1115-7

Door decoration Heart

Size after felting approx. 35 x 42 cm (13.8 x 16.5 in)

Viking Naturgarn (100 % wool), Viking Alpaca Superfine (100% alpaca), 50 g ball

Red, 650

4 balls

Circular needle size 7 mm – US 10½ or 11 - UK/Canadian 2

Gauge: (before felting) 12 sts = approx. 10 cm (4 in) over St st using needles size 7 mm. **Check your gauge to ensure success.**

DOOR DECORATION HEART

Beg from upper edges (4 pieces altog).

Using needles size 7 mm and red yarn, cast on 6 sts.

Work back and forth in St st, and inc 1 st beg of each row until you have 24 sts on a row. Slip sts on holder/thread.

Work 3 more pieces in the same way.

Slip sts of all 4 pieces on a long circular needle = 96 st. (Note! Check that each one has RS outwards). Work 5 cm (2 in) in rnds in St st. Place markers each side, with 48 sts for each side. Cont working in St st. Dec 1 st both sides of the markers every 2nd rnd 8 times = 80 sts. Cont working in rnds, and rep dec every 2nd rnd at one edge and every 4th rnd at the other edge (Note; heart is slightly slanting!). When 44 sts rem, place new markers mid front and back = 11 sts between each marker. Cont working in St st like before, but dec 1 st on both sides of the markers every 5th rnd until 4 sts rem. Break yarn, and thread through rem sts.

Weave in all ends on WS.

Loop

Using needles size 7 mm and red yarn, cast on 6 sts.

Work back and forth in Garter st. When work measures approx.

40 cm (15.7 in), bind off rather loosely.

Sew each end of the loop inside the heart (see photo).

Sew the upper edges tog, leaving an opening in the middle for stuffing in the filling after felting.

(If you don't fill the heart with stuffing fiber, you can leave part of the upper edge open).

Felting: Wash the heart in washing machine, in 40° degrees wash program, adding small amount of mild detergent. Bigger objects felt more than small ones. Wash smaller pieces together with a towel or pair of jeans. Stretch your work into measurement and shape while still damp. Different washing machines can produce different kind of felting, test first with a swatch.

Fill the heart with stuffing fiber, and close the opening. Using white yarn, embroider with stem sts "God Jul" (= Merry Christmas) mid over the heart.

Viking Superwash 1115-8

Cushion and Christmas sock

Size, cushion width, approx. 60 cm (23.6 in), height, approx. 40 cm (15.7 in)

Height, Christmas

approx. 36 cm (14.2 in)

ALTERNATIVE YARN: Viking Superwash (100% wool, superwash), Viking Sportsgarn (100% wool), Viking Sportsragg (60 % wool, 20% acrylic, 20% nylon), Viking Alpaca Sport (30% alpaca, 40 % merino wool, 30% nylon), 50 g ball

CUSHION

Red, 150 2 balls

White, 101 1 ball

Light Grey, 113 5 balls

CHRISTMAS STOCKING

Red, 150 2 balls

White, 101 1 ball

Light Grey, 113 3 balls

Circular needle size 3 ½mm – US 4 – UK/Canadian 10 or 9

+ 8 wooden buttons, inner cushion (40X60 cm, (15.7x23.6 in)

Gauge: 23sts = approx. 10 cm (4 in) over St st using needles size 3 ½ mm. **Check your gauge to ensure success.**

CUSHION

Beg with 17 cm (6.7 in) of the upper part of the front, after that work the back, and end with approx. 23 cm (9.1 in) of front piece.

Using needles size 3½ mm and red yarn, cast on 146 sts. Work back and forth 5 cm (2) in K2,P2 rib.

When work measures 2 ½ cm (1 in), make 6 buttonholes evenly spaced apart = 20 sts between each buttonhole. Make first buttonhole 11 sts from the side, buttonhole: bind off 4 sts, next row: cast on 4 sts over the bound-off sts. Cont working back and forth until rib measures approx. 5 cm (2 in).

Dec evenly across the row 7 sts = 139 sts. Change to white yarn, and purl 1 row (= WS). Beg patt from RS as foll: K1 - *patt III as charted - patt II as charted*, rep *-* once - patt III - K1 = 139 sts. Cont working back and forth until patt is ready. End with 1 row in white, and 1 row with red. Cont working with selvage sts at each edge. Beg from RS, and work and rep patt IV as charted until work measures 58 cm (22.8 in). Inc 2 sts = 141 sts (1st and last st = selvage st). Work in patt I as charted. When patt I is ready, dec 2 sts = 139 sts. Cont working in patt IV with selvage sts. When work measures 80 cm (31.5 in), inc evenly across the row

number of sts to be 146 sts. Work 5 cm (2) in K2,P2 rib. Bind off rather loosely in rib.

Weave in all ends on WS.

Sew on buttons.

Sew side seams with ribbed edges on top of each other.

Slip in inner cushion.

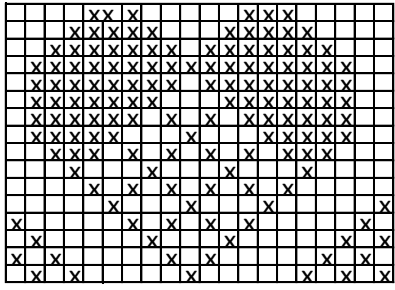
CHRISTMAS STOCKING

Using short circular needle size 3½ mm and red yarn, cast on 104 sts. Work in rnds 5 cm (2in) in K2,P2 rib. Knit 1 rnd. Change to grey yarn, and work in patt V as charted. Work 1 rnd in red, and 1 rnd in white. Cont working in patt II as charted, rep 2 times in width, **turn chart upside down**. Work in patt V, and then in patt IV, rep 2 times in height. Cont working in patt VI as charted, beg and end rnd with 2 sts in grey. Cont working in rnds in patt IV until the end. When work measures approx. 31 cm (12.2 in) (measured from cast-on edge), work heel with grey yarn over 52 mid back sts as foll: Work back and forth 5 cm (2 in) in St st. Decas foll: Knit until 8 sts rem, turn, purl until 8 sts rem. Cont working in the same way until 9 sts rem. Slip 1 st, K1, pssso. Turn, purl until 9 sts rem, P2tog. Cont working in the same way, and dec until mid sts rem = 34 sts. Pick or knit up along each side of the heel 15 sts, and work sts on front side = 116 sts. Place markers each side, 52 sts for both sides. Cont working in rnds in patt IV. **Dec** 1 st before 1st sidemarker (K2togt), and 1 st after 2nd sidemarker (K2tog) every 2nd rnd, until 104 sts rem. When foot measures approx. 28 cm (11 in) (or before starting dec), beg dec: *K6, K2tog*, rep *-* across the rnd. Work 1 rnd without dec. Next rnd: *K5, K2tog*, rep *-* across the rnd. Work 1 rnd without dec. Rep dec every 2nd rnd, with 1 st less between dec each time until 26 sts rem. Next rnd: Knit all sts tog in pairs = 13 sts. Break yarn, thread through rem sts, pull tightly, and weave in on WS.

Weave in all ends on WS.

Twist a cord (approx. 20 cm (7.9 in) = measure for a ready loop = 10 cm (4 in) long) using 3-doubled yarn, and sew mid back, inside ribbed edge.

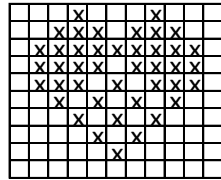
Pattern I over 20 sts



repeat

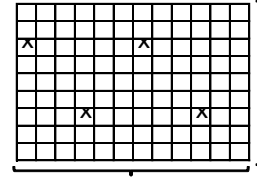
beg here

Pattern III over 11 sts



beg here

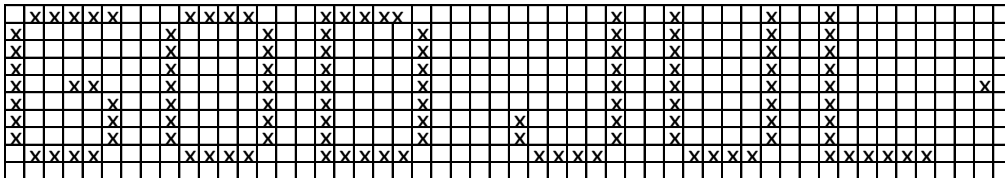
Pattern IV



repeat

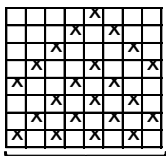
Fintas

Pattern II over 52 sts



beg here

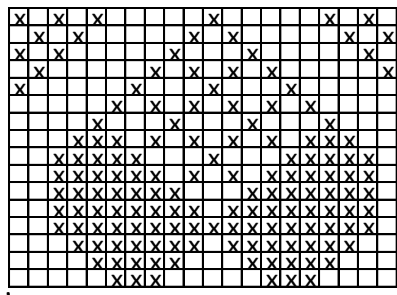
Pattern V



repeat

beg here

Pattern VI over 20 sts



repeat

beg here

- = white, patt II and III
grå på mønster I, IV, V og VI
- = red

Viking Bjørk

1115-9

Pot holder

Size: 20X20 cm
7.9x7.9 in

ALTERNATIVE YARN: Viking Bjørk (90% cotton, 10% merino wool), 50 g balls

Red, 450
1 ball
White, 400
1 ball

Short circular needle size 3 mm – US 2 or 3 – UK/Canadian 11
Crochet hook size 3 mm – US C/2 or D/3 – UK/Canadian 11

Gauge: 25 sts = approx. 10 cm (4 in) over St st using needles size 3 mm. **Check your gauge to**

ensure success.

Abbreviations:

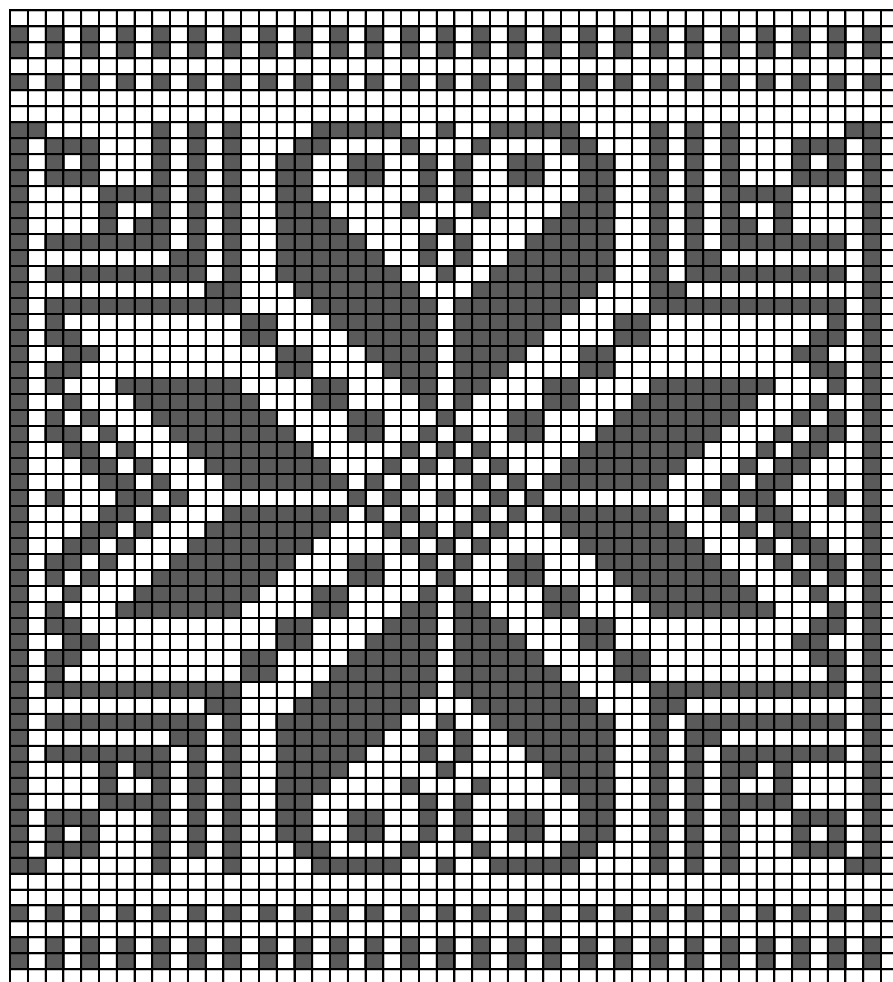
ch = chain stitch, sc = single crochet

POT HOLDER

Using short circular needle size 3 mm and white yarn, cast on 100 sts. Cont working in rnds in patt as charted. Note! Basic clr on one side is red, and on the other side white, (see chart symbols). Bind off. Weave in all ends on WS.

Finishing

Dampen work slightly, and fold it with one star mid front and back. Beg from one corner, using crochet hook size 3 mm and red yarn, crochet 1 rnd sc to each side. End with ch15 to the corner (= loop), fasten to 1st sc. Turn, and work 20 sc into the loop. Break yarn, and draw through last st.



FRONT	BACK
□ = white	red
■ = red	white

↑
Beg here
= side st

Viking Alpaca Sport 1115-10 Christmas Stocking

Size: 20x45 cm
7.9x17.7 in

ALTERNATIVE YARN: Viking Alpaca Sport (40% merino wool, 30% alpaca, 30% nylon), Viking Sportsgarn (100% wool), Viking Superwash (100% wool, superwash), Viking Sportsragg (60% wool, 20% acrylic, 20% nylon), 50 g ball

Red, 650
2 balls
White, 600
1 ball

Short circular needle size 3 ½ mm – US 4 – UK/Canadian 10 or 9
Crochet hook size 2½ mm – US B/1 or C/2 – UK/Canadian 12

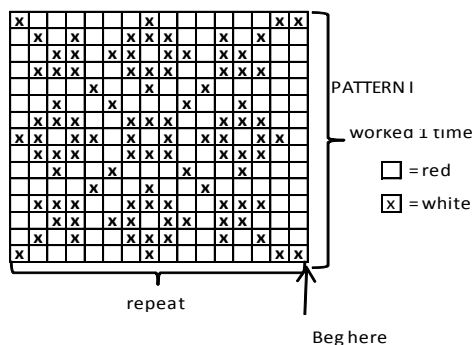
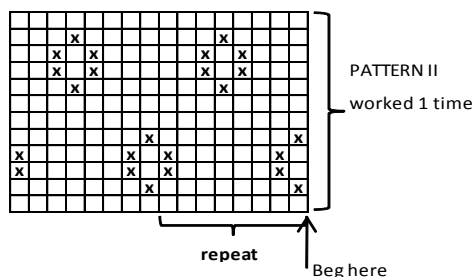
Gauge: 23 sts = approx. 10 cm (4 in) over St st using needles size 3½ mm. **Check your gauge to ensure success.**

CHRISTMAS STOCKING

Using needles size 3½ mm and red yarn, cast on 96 sts. Work 3 rnds in St st. Cont working in rib as foll: K2 with red, P2 with white. When work measures approx. 6 cm (2.4 in), work 2 rnds in St st with red yarn. Cont working as foll: *Patt I as charted, patt II as charted*, rep *-* until the end.

When work measures approx. 24 cm (9.4 in), work for heel over 40 mid back sts (heel is worked with stripes, 2 rows with red, and 2 rows with white): Work back and forth approx. 8 cm (3.1 in) in St st. Knit until 10 sts rem at one side, turn, and purl until 10 sts rem at the other side. Turn, and knit until 11 sts rem. Slip next st, K1, pssso. Turn, purl until 11 sts rem, and P2tog. Cont working in this way until 20 sts rem.

Pick up with red yarn approx. 15 sts both sides of the heel, and cont working in rnds with patt (= 96 sts on a rnd). When foot measures approx. 23 cm (9.1 in) (measured from the back of the heel), end with a complete patt report, beg dec (work with stripes). Divide sts on 4 dpn. Dec 1 st beg and end of each needle (= 8 sts). Rep dec every 2nd rnd until 16 sts rem. Break yarn, thread through rem sts, pull tightly, and weave in on WS. Using red yarn, crochet a loop to the upper edge (mid back): Fasten yarn with 1 sl st – ch20, and fasten with 1 sl st to next edge st. Turn, and work 26 sc into the loop. Break yarn, and weave in on WS. Weave in all ends on WS.



Viking Superwash 1115-11 Cardigan, hat and pants for Teddy

Size, Teddy approx. 40 cm

15.7 in

Cardigan, length, approx. 17 cm

6.7 in

Pants, approx. 17 cm

6.7 in

ALTERNATIVE YARN: Viking Superwash (100% wool, superwash), Viking Sportsgarn (100% wool), Viking Sportsragg (60% wool, 20% acrylic, 20% nylon), Viking Alpaca Sport (30% alpaca, 40% merino wool, 30% nylon), 50 g ball

Cardigan

Red, 160 1 ball

White, 100 2 balls

Pants

Red, 160 1 ball

White, 100 1 ball

Hat

Red, 160 1 ball

White, 100 1 ball

Whole set: Red 160 – 3 balls, white, 100- 2 balls

Double pointed needles and short circular needle size 3 and 3 ½ mm – US 2 or 3 and 4 – UK/Canadian 11 and 10 or 9

+ 1 white open-end zipper, 15 cm (in), and elastic for pants

Gauge: 23 sts = approx. 10 cm (4 in) over St st using needles size 3 ½ mm. **Check your gauge to ensure success.**

CARDIGAN

Using needles size 3 mm and white yarn, cast on 106 sts. Work back and forth 2 cm (0.8 in) in K2,P2 rib, but when 2 rows rem, bind off 12 sts mid back for a tail hole, next row: cast on 12 sts over the bound-off sts. Knit 1 row, and inc 1 st = 107 sts. Change to needles size 3 ½ mm. Cont working back and forth in St st and patt I as charted, knit 1st and last st every row = selvage st. When patt I is ready, cont working in St st with white yarn, and patt II as foll: 1 selvage st, K5, patt II, St st over 65, patt II, K6. Cont working back and forth as established until work measures 10 cm (4 in) measured from cast-on edge. Place markers each side, 27 sts for right front, 53 sts for back, and 27 sts for left front. Bind off 4 sts each side for armholes (2 sts both sides of the markers). Finish back and front separately.

Back

Cont working back and forth in St st. Bind off at each edge every 2nd row 1x2, and 1x1 st. When armhole measures 8 cm (3.1 in), bind off.

Right front

Cont working back and forth in patt II. Bind off for armhole same as for back. When armhole measures approx. 6 cm (2.4 in), bind off first 9 sts for neck edge. Bind off at neck edge every 2nd row 1x3, 1x2 and 1x1 st (= 12 sts rem). When armhole measures same as back, bind off.

Work same for left front, rev all shaping.

Sleeves

Using needles size 3 mm and red yarn, cast on 36 sts. Work in rnds 2 cm (0.8 in) in K2,P2 rib. Knit 1 rnd. Change to needles size 3½ mm and white yarn. Cont working in rnds in St st until work measures 6 cm (2.4 in), measured from cast-on edge. Bind off 4 sts mid under arm. Cont working back and forth in St st. Bind off at each edge every 2nd row 1x2, and 1x1 st. Bind off rem sts. Work same for the other sleeve.

Finishing

Sew shoulder seams. Sew on sleeves.

Neck band: Using needles size 3 mm and white yarn, pick or knit up 86 sts. Work back and forth 2 cm (0.8 in) in K2,P2 rib. Bind off rather loosely in rib.

Front borders: Using needles size 3½ mm and white yarn, pick or knit up 31 sts along front edge. Work back and forth 3 rows in St st. Change to red yarn, work 2 rows. Bind off knitwise on WS row. Work same for the other front border.

Sew on zipper.

HAT

Using needles size 3 mm and red yarn, cast on 78 sts. Work back and forth approx. 3 cm (1.2 in) in K2,P2 rib, but when 2 rows rem, bind off for ear holes as foll: Work 18 sts, bind off 10 sts, work 22 sts, bind off 10 sts, work 18 sts. Next row: Cast on 10 sts over the bound-off sts. Knit 1 row, and dec 1 st = 77 sts.

Change to needles size 3 ½ mm. Beg from RS.

Work in patt I as charted inside selvage sts.

When patt I is ready, cont working in St st until work measures approx. 10 cm (4 in), measured from cast-on edge.

Bind off at each edge 25 sts. Cont working in St st over rem 27 mid sts until work measures same as the bound-off sides (approx. 11 cm (4.3 in), but when 4 rows rem, bind off 1 st at each edge every row = 23 sts.

Bind off.

Sew back seams.

Using needles size 3 mm and red yarn, pick or knit up 74 sts along the lower edge. Work back and forth in K2,P2, but on 3rd row work an eyelet row: *K2, P2tog, 1 yo*, rep *-* until 2 sts rem, K2.

When rib measures approx. 2 cm (0.8 in), bind off.

Weave in all ends on WS.

Twist a cord using red yarn, approx. 70 cm (27.6 in) long, and thread it through the eyelet row.

PANTS

Using needles size 3 mm and red yarn, cast on 100 sts. Work in rnds 5 cm (2 in) in K2,P2 rib. Change to needles size 3 ½ mm. Next rnd: K25, place a marker, K50, place a marker, K25 = rnd begins mid back. Work short rows, beg mid back: K5, turn, P10, turn, K15, turn, P20, cont working 5 sts more each time until you have turned altog. 10 times (5 times at each side). Cont working in rnds in St st until work measures approx. 8 cm (3.1 in), measured mid front. Place markers mid front and back, 50 sts for both back and front. Work until 6 sts rem before mid back marker, bind off 12 sts (next rnd: cast on 12 sts over the bound-off sts). When work measures 12 cm (4.7 in), measured from cast-on edge mid front, inc 1 st both sides of the markers mid front and back. Rep inc every 2nd rnd altog. 3 times = 112 sts. Bind off 6 sts mid front and back = 3 sts both sides of the mid markers. Divide work into two pieces, and finish each leg separately.

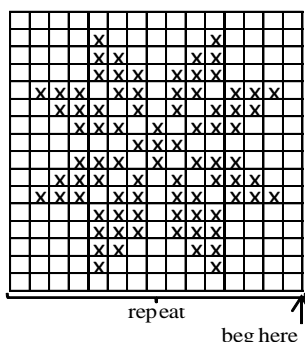
Leg: Slip 50 sts on dpn size 3½ mm. Work in rnds in St st with red yarn, dec 1 st = 49 st. Cont working in patt I as charted, but 2 first and 2 last sts are worked with red yarn every rnd. When patt I is ready, work 2 rnds in red. Change to needles size 3

mm, and work 2 cm (0.8 in) in K2,P2 rib. Bind off in rib. Work same for the other leg.

Weave in all ends on WS. Sew crotch seam.

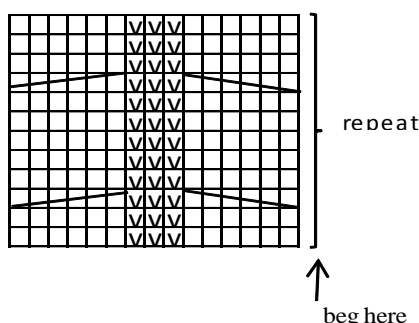
Fold waist rib in double, and sew on WS. Thread elastic to the waist rib.

PATTERN I OVER 15 sts



- = red: pants and hat, white: cardig:
- ⊠ = white: pants and hat, red: cardig:

PATTERN II OVER 15 sts



- = K on RS. P on WS
- ⊠ = P on RS. K on WS
- = sl 3 sts on cn, hold to front, K3 . knit sts from cn
- = sl 3 sts on cn, hold to back, K3, knit sts from cn

Viking Milk&Honey 1115-12 Gnome

Size: height approx. 20 cm
7.9 in

ALTERNATIVE YARN: Viking Milk&Honey (70% cotton, 30% milk fiber), Viking Sportsgarn (100% wool), Viking Superwash (100% wool, superwash), Viking Sportsragg (60% wool, 20% acrylic, 20% nylon), 50 g ball

- Red, 850 2 balls
- Multiclr Grey, 812 1 ball
- Beige, 807 1 ball
- Black, 803 1 ball

Crochet hook size 2 or 2½ mm – US B/1 – UK/Canadian 14

Note! Gnome is crocheted very tightly. Use a small crochet hook to obtain the correct gauge.

Gauge: 24 sc = approx. 10 cm (4 in) using crochet hook size 2 or 2½ mm. **Check your gauge to ensure success.**

GNOME

Beg from lower edge. Using red yarn, ch4, join into ring with 1 sl st.

(1st dc = ch2, end rnd with 1 sl st to 2nd ch-st beg of rnd).

1st rnd: 8 dc into ring (1st dc = ch2).

2nd rnd: 2 dc to each st = 16 dc.

3rd rnd *1 dc, 2 dc to next st*, rep *-* across the rnd = 24 dc.

4th rnd: *2 dc, 2 dc to next st*, rep *-* across the rnd = 32 dc

5th rnd: *3 dc, 2 dc to next st*, rep *-* across the rnd = 40 dc

6th rnd: *4 dc, 2 dc to next st*, rep *-* across the rnd = 48 dc

7th rnd: *5 dc, 2 dc to next st*, rep *-* across the rnd = 56 dc

8th rnd. *6 dc, 2 dc to next st*, rep *-* across the rnd = 64 dc

Work 1 dc-rnd. Change to black yarn, and work 2 dc-rnds. Change to multiclr grey yarn, and work 7 dc-rnds.

Beg dec on next rnd: *2 dc, 2 dc tog*, rep *-* across the rnd. Rep dec with 1 dc less between dec. Fill in body with cotton (shape the body to be nice and round). Work 1 dc-rnd, and dec by working all dc tog in pairs across the rnd. Next rnd: Work all dc tog in pairs = 8 dc rem. Break yarn, break yarn, and draw through rem sts, pull tightly, and weave in on WS.

HAT

Using red yarn, ch70, join into ring with 1 sl st. Beg with ch2 (=1st dc). Cont working in rnds, 69 dc (= altog. 70 dc). Work altog. 11 dc-rnds (first 4 rnds will be folded on RS). Beg dec as foll: *5 dc – 2 dc tog*, rep *-* across the rnd. Work 3 rnds without dec. Rep dec with 4 dc between each dec. Work 3 rnds without dec. Rep dec with 3 dc between each dec. Work 3 rnds without dec. Rep dec with 2 dc between each dec. Work 4 rnds without dec. Rep dec with 1 dc between each dec. Work 5 rnds without dec. Work all sts tog in pairs (= 10 dc rem). Work 1 rnd without dec. Break yarn, thread through rem sts, and pull tightly. Make a big pompon using red yarn, and fasten on top. Sew hat on top the head.

Nose: Make a finger lock, using beige clr, and work 6 sc into lock. Draw the strings to tighten the lock. Next rnd: 2 sc to each st = 12 sc. Work 3 sc-rnds. Next rnd: 1 sc to every 2nd st = 6 sc. Break yarn, thread through rem sts, pull tightly, and weave in on WS. Fill with cotton before closing the opening.

Sew on the body (directly below hat).

Legs: Make a finger lock, using lack yarn, and work 6 sc into lock. Draw the strings to tighten the lock. Next rnd: 2 sc to each st = 12 sc. Rep inc one more time = 24 sc. Work 5 sc-rnds. Next 2 rnds: 1 sc to every 2nd st = 6 sc. Break yarn, thread through rem sts, and pull tightly. Fill in with cotton before closing the opening. Sew legs to the body.

Use white cotton or yarn for the beard.

Viking Alpaca Silk 1115-13 Dress and "mamelucks"

Size	6/9	12/18 months	2	3	4 yrs
Chest	48	51	53	56	60 cm
	18.9	20.1	20.9	22	23.6 in
Sleeve length	22	25	27	29	31 cm
	8.7	9.8	10.6	11.4	12.2 in
Sleeve width	9	10	11	11	12 cm
	3.5	4	4.3	4.3	4.7 in
Length	34	37	40	42	44 cm
	13.4	14.6	15.7	16.5	17.3 in
Hips	53	56	59	62	64 cm
	20.9	22	23.2	24.4	25.2 in
Leg length	14	17	20	23	25 cm
	5.5	6.7	7.9	9.1	9.8 in

ALTERNATIVE YARN: Odin Alpaca Silk (50% alpaca, 50% silk), Viking Bjørk (90% cotton, 10% merino wool), 50 g ball

DRESS

White, 400 1 1 1 1 1 ball
Red, 450 4 4 4 5 5balls

"MAMELUCKS"

White, 400 1 1 1 1 1 ball
Red, 450 3 3 4 4 5 balls

Double pointed needles and circular needle size 2 1/2 and 3 mm – US 1 or 2 and 2 or 3 – UK/Canadian 13 or 12 and 11

approx. 70 cm (27.6 in) silk ribbon, width 3 cm (1.2 in)

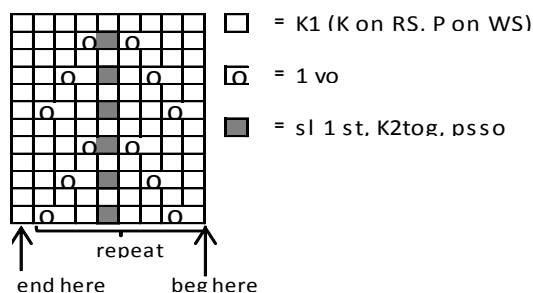
+ 6 plastic snap fasteners for dress, elastic for pants

Gauge: 25 sts = approx. 10 cm (4 in) over St st using needles size 3 mm. **Check your gauge to ensure success.**

DRESS

Worked back and forth with a circular needle.

Beg from laced lower edge. Using needles size 2 1/2 mm and white yarn, cast on 241-257-265-281-297 sts. Work 4 rows in Garter st. Cont working in patt as charted (worked 1 time)



Change to needles size 3 mm and red yarn. Knit 1 row, and dec evenly across the row number of sts to be 224-236-248-264-280 sts. Work 3 rows in St st. Eyelet row (= folding edge): K1 = selvage st, *K2tog, 1 yo*, rep *-* across the row, end with K1 = selvage st. Work 4 rows in St st. Next row: Use extra needle to pick up sts from WS along first red row, 1 st from each st. Keep needles side by side, and knit sts tog = folding edge seam. Place markers each side, 74-78-82-88-94 sts for back, and 75-79-83-88-93 sts both fronts. Cont working in St st, and dec 1 st both sides of the markers + 1 st inside both selvage sts = 6 sts. Rep dec altog. 11-11-12-13-13 times, approx. every 1 1/2-1 1/2-1 1/2-1 1/2-2.cm (0.6-0.6-0.6-0.6-0.8 in) = 52-56-58-62-68 sts for back, and 53-57-59-62-67 sts for each front. When work measures 23-25-27-29-30 cm (9.1-9.8-10.6-11.4-11.8 in), measured from cast-on edge, bind off 4 sts beg of each row altog. 3 times at each edge, and 3 sts once at each edge = altog. 4 dec at each edge. Next row: Bind off 3 sts both sides of the sidemarkers = 6 sts for each armhole. Finish back and fronts separately.

Back

Cont working back and forth in St st. Bind off at each edge every 2nd row 1x2, and 1x1 st = 40-44-46-50-56 sts. When work measures the given length, and armhole measures 9-10-11-11-12cm (3.5-4-4.3-4.3-4.7 in), bind off.

Right front

Cont working back and forth in St st. Bind off for armhole same as for back. Cont binding at neck edge every 2nd row as foll: 2x3, 9-10-10-11-12x2 sts = 8-10-12-13-16 sts rem. When armhole measures same as back, bind off.

Work same for left front, rev all shaping.

Sleeves

Using needles size 2½ mm and white yarn, cast on 40-40-48-48-48 sts. Work 4 rnds in Garter st. Cont working in patt as charted (worked 1 time). Change to needles size 3 mm, and red yarn. Work 4 rnds in St st, adjusting evenly across 1st rnd number of sts to be 30-34-36-40-40 sts. Work eyelet rnd and folding edge same as for body. Place a marker mid under arm. Cont working in rnds in St st. Inc 1 st both sides of the marker every 2½-2½-2½-3-2½ cm (1-1-1-1.2-1 in) until you have 44-50-54-56-60 sts on a rnd. When sleeve measures the given length, or as desired, bind off 6 sts mid under arm (3 sts both sides of the marker). Cont working back and forth. Bind off at each edge every 2nd row 1x2, and 1x1 st. Bind off rem sts.

Work same for the other sleeve.

Finishing

Weave in all ends on WS.

Join shoulder seams.

Sew on sleeves. Sew 3 snap fasteners each side of the dress.

Sew silk ribbon beg of slanting on each front.

”MAMELUCKS”

Beg from lower edge of legs.

Using dpn size 2½ and white yarn, cast on 48-48-48-56-56 sts. Work 4 rnds in Garter st. Cont working in patt as charted (= worked 1 time).

Change to needles size 3 mm and red yarn. Work 4 rnds in St st, adjusting evenly across 1st rnd number of sts to be 40-40-44-48-50 sts. Work eyelet rnd and folding edge same as for body and sleeves.

Knit 1 rnd, adjusting evenly across the rnd number of sts to be 54-52-50-48-50 sts. Place a marker on the inner seam of leg (= beg of rnd). Cont working in St st. Inc 1 st both sides of the marker every 1 cm (0.4 in) (same for all sizes), until you have 74-78-82-86-88 sts on a rnd. When leg measures 14-17-20-23-25 cm (5.5-6.7-7.9-9.1-9.8 in), measured from cast-on edge, leave work aside, and work same for the other leg.

Slip both legs on same circular needle size 3 mm = 148-156-164-172-176 sts. Place markers mid front and back. Cont working in rnds in St st. Dec 1 st both sides of the mid markers, before the markers: K2togtbl, after the markers: K2tog. Rep dec every 2nd rnd, altog. 4 times = 132-140-148-156-160 sts. When work measures 19-21-22-23-24 cm (7.5-8.3-8.7-9.1-9.4 in), measured from crotch.

Place markers at each side, 66-70-74-78-80 sts for both back and front. Work short rows: Beg from mid back, K6, turn, P12. Turn, K18, turn and P24. Cont working in the same way, 6 sts more each row until you have turned altog. 10 times = 5 times each side. Knit 1 rnd over all sts, and dec evenly across the rnd number of sts to be 112-120-124-128-136 sts. Change to needles size 2 ½ mm. Cont working in K2,P2 rib. When rib measures 8 cm (3.1 in), bind off rather loosely in rib.

Fold rib in double, and sew on WS.

Weave in all ends on WS. Sew crotch seam.

Thread elastic to waist rib.

Viking Alpaca Silk 1115-14

Hat and gloves

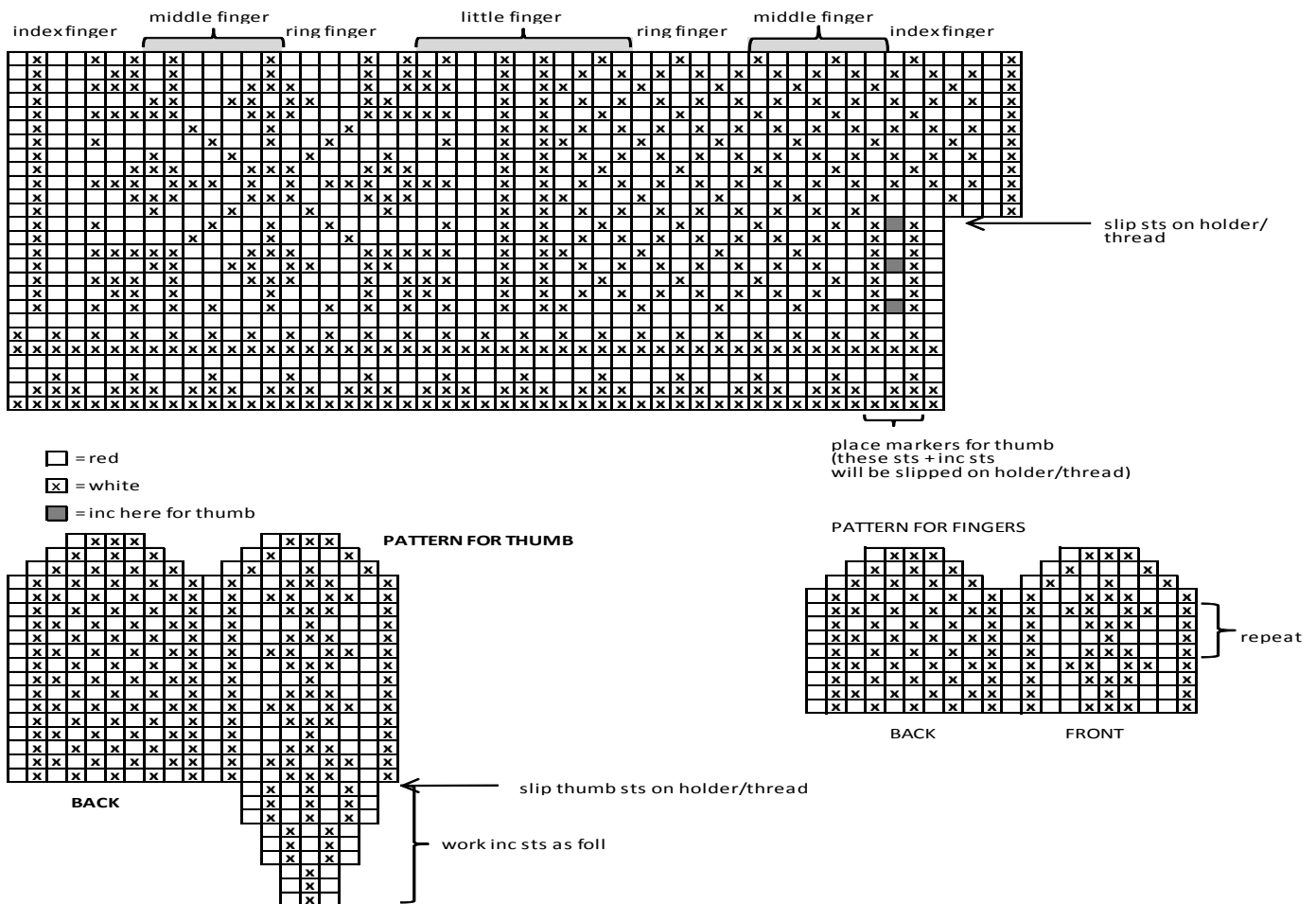
Size: 4/8 yrs
Circumference: approx. 45 cm
 17.7 in

ALTERNATIVE YARN: Viking Alpaca Silk (50% alpaca, 50% silk), Viking Bjørk (90% cotton 10% merino wool), 50 g ball

Red, 450
 2 balls
 White, 400
 1 ball

Double pointed needles size 2 ½ and 3 mm – US 1
 or 2 and 2 or 3 – UK/Canadian 13 or 12 and 11

Gauge: 25 sts = approx. 10 cm (4 in) over St st using needles size 3 mm. **Check your gauge to ensure success.**



GLOVES

Using needles size 2 ½ mm and red yarn, cast on 48 sts. Work in 4 rnds in St st. Cont working in K2,P2 rib with 2 clrs, all k-sts with white, and all p-sts with red yarn. Work in rib until work measures approx. 7 cm (2.8 in). Change to needles size 3 mm. Cont working in patt as charted, and inc for thumb (see chart). Slip thumb sts on holder/thread as charted. Cast on sts over thumb sts = 52 sts on a

rnd. Cont working in patt as charted.

Index finger: Slip sts as charted on 4 dpn, cast on 6 new sts (3 sts each side) between index finger and middle finger = 20 sts. Cont working in patt, and rep chart until finger measures approx. 6 cm (2.4 in), or approx. 1 ½ cm (0.6 in) less than total length. Dec as charted.

Middle finger: Slip sts as charted on 4 dpn, pick up 3 sts between middle finger and index finger. Cast

on 3 new sts between middle finger and ring finger = 20 sts. Cont working in patt as charted until finger measures approx. 7 cm (2.8 in), or approx. 1 ½ cm (0.6 in) less than total length. Dec as charted.

Ring finger: Slip sts as charted on 4 dpn, pick up 4 sts between ring finger and middle finger. Cast on 3 sts between ring finger and little finger = 20 sts.

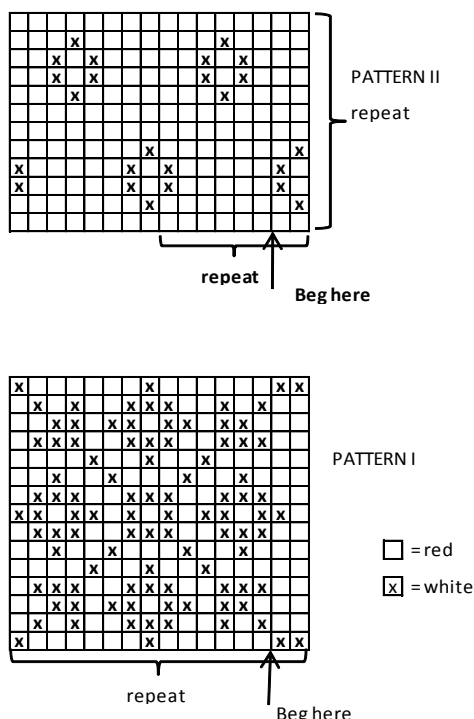
Cont working in patt as charted until finger measures approx. 6 cm (2.4 in), or approx. 1 ½ cm (0.6 in) less than total length. Dec as charted.

Little finger: Slip sts as charted on 4 dpn, pick up 5

HAT

Beg from one ear flap. Using needles size 3 mm and red yarn, cast on 5 sts. Knit 1 row. Next row: K2, inc 2 sts = knit next st three times, first tfl, then tbl, and again tfl, K2 = 7 sts. Next row: K3, P1, K3.

Next row (= RS): K3, M1, K1, M1, K3. WS row: K3, P3, K3. Cont working back and forth, and inc 1 st at each edge inside 3 sts every 2nd row altog. 10 times = 25 sts. Put work aside, and work same for the other ear flap. Slip ear flap sts on same circular needle: Knit sts of 1 ear flap – cast on 19 sts (= mid back) – knit sts of the other ear flap – cast on 43 sts (= mid front) = altog. 112 sts on a rnd. Cont working in rnds in St st, but work 3 rnds in P1,K1 rib over cast-on sts mid front and back. Cont working in St st and patt I as charted. When patt I is ready, work and rep patt II until the end. When work measures approx. 13 cm (5.1 in), beg dec for top: *K6, K2tog*, rep *-* across the rnd. Work 2 rnds without dec. Rep dec every 3rd rnd with 1 st less between each dec until 28 sts rem. Work 1 rnd without dec. Next rnd: Knit all sts tog in pairs = 14 sts rem. Break yarn, and thread through rem sts.



sts between little finger and ring finger = 16 sts. Cont working in patt as charted, but with 4 sts less for back (without 4 mid sts on the chart). When finger measures approx. 5 cm (2 in) (or desired length), dec as charted.

Thumb: Slip 9 sts from holder/thread on needles size 3 mm. Pick or knit up 9 sts from cast-on edge + 1 st each side = 20 sts. Work in patt for thumb as charted until thumb measures approx. 4 ½ cm (1.8 in). Dec as charted.

Viking Baby Ull 1115-15

OVERALL

Size:	Baby	B/Prem	1	3	6/12 months	2	3/4 yrs	
Chest:	37	48	52	61	64	71	cm	
	14.6	18.9	20.5	24	25.2	28	in	
Length:	35	42	50	64	70	80	cm	
	13.8	16.5	19.7	25.2	27.6	31.5	in	
Sleeve length:	12	16	18	22	27	30	cm	
	4.7	6.3	7.1	8.7	10.6	11.8	in	
Leg length:	10	14	17	20	28	33	cm	
	4	5.5	6.7	7.9	11	13	in	

ALTERNATIVE YARN: Viking Baby Ull (100% merino wool, superwash), Viking pure MILK fiber (100% milk fiber), 50 g ball

Red, 350 3 3 4 4 5 5 balls
White, 300 1 1 1 1 1 1 ball

Circular needles and double pointed needles size 3 and 4 mm – US 2 or 3 and 6 – UK/Canadian 11 and 8

+ 4-4-5-5-5 small buttons

Gauge: 28 sts = approx. 10 cm (4 in) over St st using needles size 3 mm. **Check your gauge to ensure success.**

Gauge with double yarn: 23 sts = approx. 10 cm (4 in) over St st using needles size 4 mm.

Seed Stitch:

1st rnd: K1, P1

2nd rnd: Knit all p-sts, purl all k-sts.

Rep 2nd rnd.

Beg from lower edge of one leg: Using dpn size 4 mm and double white yarn, cast on 26-30-36-46-52-56 sts. Work 6-6-8-8-10-10 rnds in Seed st. Change to red single yarn, and cont working with needles size 3 mm. Knit 1 rnd, adjusting evenly across the rnd number of sts to be 54-65-71-77-82-89 sts. Cont working in St st. Place a marker beg of rnd = inner seam. Inc 1 st both sides of the marker approx.

every 2-2-1½-2-2 cm (0.8-0.8-0.6-0.8-0.8 in) until you have approx. 64-79-85-101-106-115 sts on a rnd. When work measures approx. 10-14-17-20-28-33 cm (4-5.5-6.7-7.9-11-13 in), leave work aside. Work same for the other leg.

Slip both legs on same circular needle = 128-158-170-202-212-230 sts.

Place a marker mid front and back. Cont working in rnds in St st. Dec 1 st both sides of the markers mid front and back (before markers: K2togtl, after markers: K2tog) **every** rnd 6-6-6-8-8-8 times (= 104-134-146-170-180-198 sts). When work measures 3-3-4-5-5-5 cm (1.2-1.2-1.6-2-2-2 in) (measured from crotch), bind off 5 sts mid front = 99-129-141-165-175-193 sts. Place markers each side, 51-67-73-85-89-99 sts for back, and 24-31-34-40-43-47 sts for each front. Cont working back and forth in St st until work measures approx. 27-33-40-52-57-66 cm (10.6-13-15.7-20.5-22.4-26 in). Divide work at side markers, and finish back and fronts separately.

Back: Cont working back and forth in St st with patt as charted (check from mid st where to beg patt). Cont working in St st with red yarn until armhole measures approx. 8-9-10-12-13-14 cm (3.1-3.5-4-4.7-5.1-5.5 in). Bind off.

Right front: Work same as for back, beg patt from arrow in the chart (= "beg her"). When armhole measures approx. 6-6-7-9-10-10 cm (2.4-2.4-2.8-3.5-4-4 in), bind off at neck edge every 2nd row 1x8-10-12-14-16-18, 1x3, 1x2, and 1x1 st. When work measures same as back, bind off. Work same for left front, rev patt and all shaping.

Sleeves

Using dpn size 4 and double white yarn, cast on 24-30-34-38-40-42 sts. Work for border same as for leg. Change to single red yarn, and needles size 3 mm. Cont working in St st, and inc evenly across 1st rnd number of sts to be 34-38-44-54-58-60 sts. Place a marker mid under arm. Inc 1 st both sides of the marker approx. every 1½-1½-2½-2½-3½-3 cm (0.6-0.6-1-1-1.4-1.2 in) until you have 46-52-56-68-72-78 sts on a rnd. When work measures approx. 12-16-18-22-27-30 cm (4.7-6.3-7.1-8.7-10.6-11.8 in), bind off. Work same for the other sleeve.

Finishing:

Sew shoulder seams.

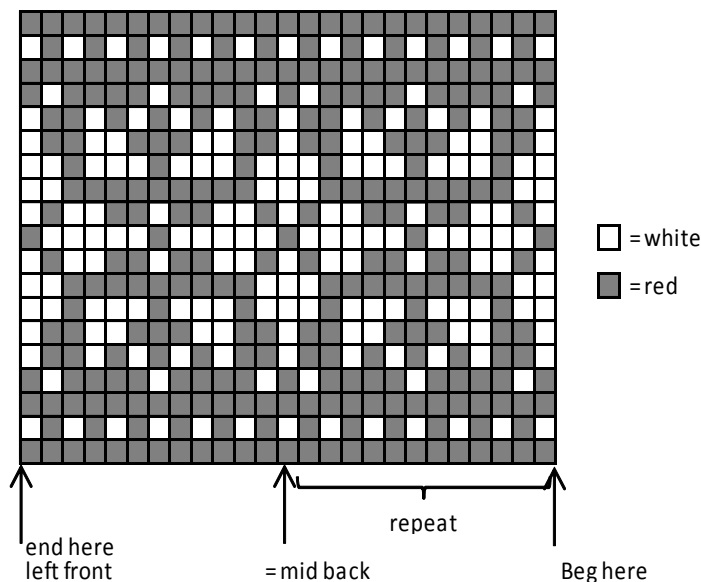
Right front border: Using needles size 3 mm and red yarn, pick or knit up approx. 56-64-76-96-96-106 sts along right front edge. Work back and forth 2 cm (0.8 in) in K1,P1 rib. Bind off in rib. Place markers for altog. 4-4-5-5-5-5 buttons, one approx. 1 cm (0.4 in) from neck edge, 1 approx. 3-3-3-4-4-4 cm (1.2-1.2-1.2-1.6-1.6-1.6 in) from lower edge, rem evenly spaced apart. Work same for left front, but make buttonholes when border measures

approx. 1 cm (0.4 in). Buttonhole: Bind off 2 sts. Next row: Cast on 2 sts over the bound-off sts. Place borders over each other, and sew lower edges to the body.

Hood: Beg mid front, using a short circular needle size 3 mm and red yarn, pick or knit up approx. 62-66-72-84-90-94 sts along neck edge (also over front borders). Work back and forth 2 cm (0.8 in) in K1,P1 rib. Knit 1 rnd, adjusting evenly across the row number of sts to be 100-116-120-128-140-148 sts. Work back and forth in St st until work measures approx. 12-14-17-19-23-26 cm (4.7-5.5-6.7-7.5-9.1-10.2 in) (or desired length), measured from neck edge. Bind off, or slip sts on holder. Join top seam.

Front border for hood: Using needles size 4 mm and double white yarn, pick up approx. 55-65-77-87-105-119 sts. Work for border same as for legs. Bind off. Fold border in double, and sew on WS. Twist a cord using white yarn, and thread into front casing.

Sew on sleeves. Weave in all ends on WS. Sew on buttons.



Viking Pleddgarn and Viking Odin **1115-16**

Hat and collar and blanket

Size: **4/8 yrs**

ALTERNATIVE YARN: Viking Odin (100% wool, superwash) 100 g ball. Viking Pleddgarn (85% acrylic, 15% polyester), 350 g ball.

Pleddgarn

White, 701 1 ball

Viking Odin:

Red, 850 1 ball

Note! Viking Pleddgarn comes on 350 g ball, rest yarn can be used for knitting a blanket.

Double pointed needles and short circular needle size 5 mm – US 8 – UK/Canadian 6

Gauge: 18 sts = approx. 10 cm (4 in) over St st using needles size 4½ mm. **Check your gauge to ensure success.**

COLLAR

Using needles size 5 mm and Viking Pleddgarn, cast on 70 sts. Work back and forth 2 rows in Garter st. Make a buttonhole beg of row as foll: K3, bind off 2 sts (next row: cast on 2 sts over bound-off sts). Cont working in Garter st. When work measures approx. 7 cm (2.8 in), make another buttonhole. Make one more buttonhole after approx. 5 cm (2 in). Inc on next rnd as foll: *K9 – inc 2 sts (= next st: Ktfl, ktbl, ktfl)*, rep *-* across the row, end with K10. Work 10 rows in Garter st. Next row: K10, rep inc with 11 sts between each inc. Work 10 rows in Garter st. Next row: K11, rep inc with 13 sts between inc. (**Note!** Remember buttonhole). You have now 106 sts on a row, and altog. 3 buttonholes. Knit 3 rows, and bind off sts rather loosely. Sew on 3 red buttons, or you can crochet buttons using red Viking Odin: Make a finger lock, 6 sc into lock. Draw strings to tighten the lock. Cont working in rnds in sc, 2 sc to each st = 12 sc. Work 3 more sc-rnds. Next rnd: Crochet all sc tog in pairs = 6 sc. Break yarn, thread through rem sts, pull tightly, and sew on the button on collar.

HAT

Using needles size 5 mm and white Pleddgarn, cast on 76 sts. Work back and forth 4 cm (1.6 in) in Garter st. Change to red Odin, and cont working in rnds in St st until work measures approx. 18 cm (7.1 in). Place 4 markers across the rnd, with 19 sts between markers. Cont working in rnds in St st. Dec 1 st both sides of the markers, before markers: K2togtbl, after markers: K2tog. Rep dec every 5th rnd until 4 sts rem. Break yarn, thread through rem

sts, pull tightly, and weave in on WS. Make a pompon with white Pleddgarn, and fasten on top.

BLANKET

Use rest of Viking Pleddgarn for a small blanket. Use needles size 6 or 7 mm, and cast on 100 sts. Work back and forth in Garter st until there is enough yarn left for binding off sts.

Viking Embla and Viking Naturgarn **1115-17**

Wristwarmers and scarf

Size: **Woman**

ALTERNATIVE YARN: Viking Naturgarn (100% wool), Viking Balder (100% wool, superwash), Viking Alpaka Superfine (100% alpaca), 50 g ball.

Viking Embla (85% acrylic, 15% polyester), 150 g skein

Viking Embla

Red, 750

1 skein

Viking Naturgarn

Red, 654

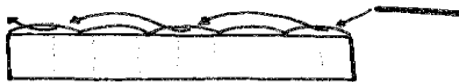
2 balls

Circular needle and double pointed needles size 7 mm – US 10½ or 11 – UK/Canadian 2

Gauge, Viking Naturgarn: 12 sts = approx. 10 cm (4 in) over St st using needles size 7 mm. **Check your gauge to ensure success.**

WRISTWARMERS

Using needles size 7 mm and red Viking Embla, cast on 8 sts. Work as illustrated on sketch until work measures approx. 10 cm (4 in). Change to Viking Naturgarn, and work each st 3 times (= ktfl, ktbl, ktfl) = 24 sts. Cont working in K2,P2 rib until work measures after inc approx. 14 cm (5.5 in), **but** inc 2 sts mid under arm approx. every 3 cm (1.2 in) (altog. 4 times). Inc sts are worked in rib. Bind off in rib. Work same for the other wristwarmer.



Embla – Sketch

Casting: Insert needle into first loop through back of the loop. Cont picking up every 2nd loop, until you have the desired number of sts on needle.

Cont working as described.

SCARF

A: Insert needle to every 2nd loop until you have altog. 8 sts on needle.

B: Turn, knit 1st st with first loop, rest with every second loop.

C: Cont repeating B until work measures the desired length.

D: Bind off. Break yarn, and thread through sts.

Weave in all ends.

SCARF

Using Viking Embla, cast on 5 sts. Knit until work measures approx. 140 cm (55.2 in), or until yarn finishes.

VikingSportsragg 1115-18 Slippers

Shoe size, approx. 35-38 39-41

Alternative yarn: Viking Sportsragg (60% wool, 20% nylon, 20% acrylic), Viking Alpaca Sport (30% alpaca, 40% merino wool, 30% nylon), Viking Sportsgarn (100 % wool), Viking Superwash (100% wool, superwash), 50 g ball

Red, 565 1 ball
White, 500 1 ball
Grey, 530 2 balls

Short circular needle and double pointed needles size 3 ½ mm – US 4 – UK/Canadian 10 or 9

Gauge: 23 sts = approx. 10 cm (4 in) over St st using needles size 3 ½ mm. **Check your gauge to ensure success.**

SLIPPERS

Beg from upper edge.

Using needles size 3½ mm and red yarn, cast on 46-50 sts. Work in rnds 5 cm (2 in) in St st. Change to white yarn, and work 4 rnds in St st. Change to grey

yarn, and knit 1 rnd. Place a marker beg of the rnd = mid back, and another marker over 3 mid sts = mid front. These 3 sts are worked as foll: 1 st with white, 1 st with grey, and 1 st with white yarn. Inc 1 st both sides of 3 mid sts every rnd until you have 96-106 sts on a rnd.

Only size 39-41: Work 3 rnds with 1 grey, and 1 white st.

For both sizes:

Work in rnds in patt I as foll: Beg mid back, *1 white, 1 grey, alt. every row (= prick patt) + patt I as charted + prick patt*, 3 mid sts, rep *-* but **in reverse**. (Note: in the beginning there aren't enough sts before or after mid sts for both patt I and prick patt).

When patt I is ready there will be 96-106 sts on a rnd.

Knit 1 rnd with 1 white, and 1 grey st, inc 1 st = 97-107 sts.

No more sts will be inc.

Only size 39-41: Work 3 rnds with 1 grey, and 1 white st.

For both sizes: Beg patt II as charted, rep until mid sts, work mid sts same as before, and rep patt II in reverse.

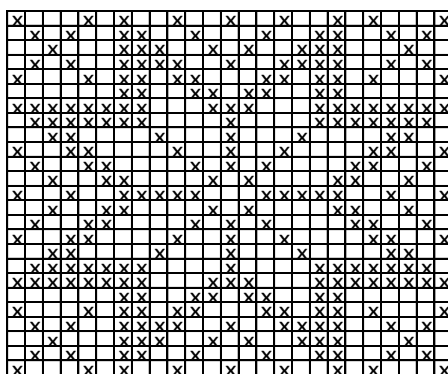
Change to grey yarn. Work 2- 4 rnds in Garter st, **incl** mid sts which are now worked with grey yarn in Garter st. Cont working in Garter st, but dec 1 st both sides of mid sts and for heel beg and end of every 2nd rnd altog. 5-6 times. Work 2 rnds without dec. Bind off all sts, or slip on holder/thread.

Join sole seam.

Weave in all ends on WS.

Work same for the other slipper.

Patter I (25 sts)

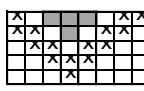


□ = grey

☒ = white

↑ beg here

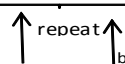
Patter II



□ = grey

☒ = white

■ = red



↑ beg here size 39-41

↑ beg here size 35-38

Viking Alpaca Sport 1115-19

Socks

Size: **Child**

ALTERNATIVE YARN: Viking Alpaca Sport (40% merino wool, 30% alpaca, 30% nylon), Viking Sportsgarn (100% wool), Viking Superwash (100% wool, superwash), Viking Sportsragg (60% wool, 20% acrylic, 20% nylon), 50 g ball

Red, 650	1 ball
Grey, 615	1 ball
Beige, 607	1 ball
White, 600	1 ball

Double pointed needles size 3 and 3½ - US 2 or 3 and 4 – UK/Canadian 11 and 10 or 9

Gauge: 23 sts = approx. 10 cm (4 in) over St st using needles size 3½ mm. **Check your gauge to ensure success.**

SOCKS

Using needles size 3½ mm and red yarn, cast on 24-32-40 sts. Work back and forth in Garter st until work measures approx. 7-9-11 cm (2.8-3.5-4.3 in). Beg rnd mid under foot. Work 6-8-8 rnds in St st with red yarn, and then 6 rnds in St st with beige yarn. Change to grey yarn, and work until work measures approx 13-16-19 cm (5.1-6.3-7.5 in) (or desired length before starting dec). Dec 1 st beg (= K2tog) and end (= K2togtbl) of each needle. Rep dec every 2nd rnd until 8-8-8 sts rem. Break yarn, thread through rem sts, pull tightly, and weave in on WS. Sew mid back seam.

Shaft: Beg mid back, using needles size 3 mm and red yarn, pick or knit up approx. 30-36-40 sts along the edge. Work in rnds in K2,P2 rib, until work measures approx. 5-6-6 cm (2-2.4-2.4 in). Divide work mid front, and cont working back and forth (= split mid front). Knit 1 row over all sts (WS). Turn inside out, and work 10 rows in St st (St st will be turned on RS). Work 6 rows in Garter st. Bind off rather loosely. Weave in all ends on WS. Work same for the other sock.

Make 2 small, white pompons, and fasten mid beige stripe (= nose). Sew 2 eyes with black yarn on each side of the pompons (see photo).

Viking Sportsgarn 1115-20

Felted slippers

Size: **35/38 39/41**

ALTERNATIVE YARN: Viking Alpaca Sport (60% alpaca superfine, 20% nylon, 20% wool), Viking Sportsgarn (100% wool), 50 g ball

Red, 160 4 4 balls

Pair of knitting needles size 3½ mm – US 4 – UK/Canadian 10 or 9

Gauge: 23 sts = approx. 10 cm (4 in) over St st using needles size 3½ mm. **Check your gauge to ensure success.**

Gauge after felting: 25-26 sts = approx. 10 cm (4 in).

SLIPPERES

Slippers are worked in one piece with seams mid front and back (= heel). Beg from upper edge of shaft. Using needles size 3½ cast on rather loosely 32-36 sts (= half of the shaft). Work back and forth in St st until work measures approx. 18-20 cm (7.1-7.9 in). Cast on end of every 2nd row (for foot): 2-3x5 m 2-3, 3x3, and 4x1 st = 55-64 sts on a row. When work measures approx. 32-34 cm (12.6-13.4 in), knit 1 row (= WS = mid under foot). Work other side in reverse = Work first in St st until work measures same as the other side, measured from mid under foot, then instead of casting on, bind off sts every 2nd row 4x1, 3x3, and 2-3x5 sts = 32-36 sts. Work approx. 18-20 cm (7.1-7.9 in) without dec.

Finishing: Fold slipper in double, WS facing each other, and sew mid back seam. Sew mid front seam, leaving approx. 10 cm (4 in) opening from shaft until split. Turn slipper inside out (= RS). Work same for the other slipper.

Felting

Wash slippers in a washing machine in 40° washing program, adding small amount of mild detergent. Bigger items felt better than smaller ones, so wash your slippers together with a towel or pair of jeans. Felting can be repeated if slippers are too big after first washing. Form slippers into correct size and shape while still damp. Afterwards you can wash your slippers in wool wash program. Different washing machines can produce different felting result, test first with a swatch.

Viking Superwash 1115-21

Slippers /Christmas basket

Shoe size: 35-37 38-39 40-41

ALTERNATIVE YARN: Viking Superwash (100% wool), superwash, Viking Alpaca Sport (30% alpaca, 40% merino wool, 30 % nylon), Viking Sportsragg (60 % wool, 20 % nylon, 20% acrylic), Viking Sportsgarn (100% wool), 50 g ball

Red, 150 1 2 2 balls
Some white crochet yarn for hearts

Pair of knitting needles size 3 ½ mm – US 4 – UK/Canadian 10 or 9
Crochet hook size 2 mm – US /1 – UK/Canadian 14

Gauge: 23 sts = approx. 10 cm (4 in) over St st using needles size 3½ mm. **Check your gauge to ensure success.**

Abbreviations:

ch = chain stitch, sl st = slip stitch, sc = single crochet, dc = double crochet, tr = treble

CROCHET HEART

Use thin crochet yarn and crochet hook size 2 mm

Ch11

1st row: 1 dc to 8th ch-st, ch2, 1 sl st to 1st ch-st.

2nd row: Ch5, 1 dc to 1st row's dc, ch2, 1 dc to 1st row's 3 ch-sts

Grid with 4 squares is now formed.

3rd row: 3 sc into 1st square, ch3, 3 sc, ch1 (= corner), 3 sc to next square, ch3, 3 sc to last square

4th row: 9 tr to ch-space (= 3 ch-sts), 1 sc to corner, 9 tr to ch-space, 1 sl st to prev row's 3rd sc, 3 sc to next square, 3 sc, ch1, 3 sc to next square, 3 sc to last square, end with 1 sl st to prev row's last st.

Break yarn, and weave in ends on WS.

SLIPPERS

Using needles size 3½ mm and red yarn, cast on 5 sts. Work back and forth 14-16-18 rows in Garter st. Inc 1 st inside selvage st beg of each row until you have altog. 19-23-25 sts on a row. Knit 1 row, and inc evenly across the row number of sts to be 38-46-50 sts. Cont working back and forth in K2,P2 rib, approx. 14-15-16 cm (5.5-5.9-6.3 in). Next row: Knit all sts tog in pairs = 19-23-25 sts. Cont working in Garter st, and dec 1 st inside selvage st beg of each row until 5 sts rem. Work 14-16-18 rows in Garter st. Bind off.

Finishing

Fold slippers in double, RS facing each other, with straps on top of each other. Sew both ribbed sides (= toes and heel).

Sew straps tog.

Work same for the other slipper.

Weave in all ends on WS.

Crochet 4 hearts using white crochet yarn, and crochet hook size 2 mm.

Crochet or twist a red cord, approx. 18 cm (7.1 in) long, and fasten a heart to both ends. Sew on each strap.

Can also be used as a Christmas basket!

Viking Naturgarn 1115-22

FELTED SLIPPERS

Size:	<u>24/27</u>	<u>28/31</u>	<u>31/33</u>	<u>34/36</u>
Foot length, approx.:	<u>16</u>	<u>17</u>	<u>18</u>	<u>20 cm</u>
	<u>6.3</u>	<u>6.7</u>	<u>7.1</u>	<u>7.9 in</u>

MATERIALS: Viking Naturgarn (100% wool), 50 g ball

Viking Naturgarn, Red, 654 3 balls
Viking Superwash, White, 10 1 ball

Double pointed needles and pair of knitting needles size 8 mm – US 11 – UK/Canadian 0

Gauge before felting: 12 sts = approx. 10 cm (4 in) over St st using needles size 8 mm. Check your gauge to ensure success.

Using pair of knitting needles size 8 mm, cast on 36 - 38 - 40 - 42 sts.

Purl 1 row.

Cont working in St st, and dec/inc as foll:

1. Bind off 3 sts beg of each row 2 times at each edge.

Knit 1 row over rem 24 - 26 - 28 - 30 sts.

2. Beg from WS, cast on 3 sts beg of each row 2 times at each edge = 36-38-42 sts.

3. = 1st row

4. = 2nd row

Cont working in the same way until you have worked altog. 18 - 18 - 18 - 23 rows.

Note that some sizes end with 1, some with 2.

Sizes ending with 2: Slip first and last 6 sts on holder (will be sewn tog later on).

Slip rem sts on dpn, and cont working in rnds in St st.

First rnd: Adjust evenly across the rnd number of sts to be 24 - 28 - 28 - 32 sts.

Rnd begins and ends mid front. Work 10 - 12 - 14 - 16 rnds (or desired length before toe dec).

Dec as foll:

* K2, K2tog*, rep *-* across the rnd.

Work 1 - 2 - 2 - 2 rnds without dec.

K1, K2tog, rep *-* across the rnd.

Work 1 - 1 - 1 - 2 rnds without dec.

Knit all sts tog in pairs.

6 - 7 - 7 - 8 sts rem.

Work 1 - 1 - 1 - 1 rnds without dec.

Break yarn, and thread through rem sts.

Sew mid back seam. Weave in all ends on WS.

Wash slippers in a washing machine, in 40° washing program. Wash slippers together with a towel. If the slippers don't felt enough, wash them again.

Wear slippers while still damp, and shape them into correct form and size.

Make small pompons using white Viking Superwash, and sew on the edge (see photo).

Viking Heklegarn 1115-23 Doilies

Size: diameter, approx. 40 cm

15.7 in

ALTERNATIVE YARN: Viking Heklegarn (100% cotton), 100 g ball

White, 800 1 ball

Crochet hook size 1 ½ mm – US 7 – UK/Canadian 2.5

Abbreviations:

ch = chain stitch, sl st = slip stitch, dc = double crochet, tr = treble, ch-space = chain space, dc-cl = double crochet cluster

Ch12, join into ring with 1 sl st.

1st rnd: 24 dc into ring (1st dc = ch3). End with 1 sl st to 3rd ch st beg of rnd.

2nd rnd: 3 tr tog to 1st dc, 1st tr = ch4, ch4, skip 1 dc, *3 tr tog to next dc,

ch4, skip 1 dc, rep from *. End with 1 sl st to 1st dc-cl = 12 dc-cl.

3rd rnd: Sl st to first ch-space, *5 dc round ch-space, ch2, rep from *. End same as first rnd.

4th rnd: * 5 dc tog, ch5, 1 tr round ch-space, ch5*, rep *-*, but NOTE! Last ch5 are worked as foll:

ch2 + 1 dc to first dc-cl.

5th rnd: * Ch6, 1 sc round next ch-space*, rep *-*. Last ch6 are worked as foll:
ch3 + 1 dc to prev rnd's dc.

NOTE! Smaller doily ends here. For the bigger doily, cont working altog. 22 rnds.

6th rnd: *Ch7, 1 sc round next ch-space*, rep *-*. Last ch7 are worked as foll:

ch3 + 1 tr to prev rnd's dc.

7th rnd: *Ch8, 1 sc round next ch-space*, rep *-* across the rnd. Last ch8 are worked as foll:

ch4 + 1 tr to prev rnd.

8th rnd: *Ch9, 1 sc round next ch-space*, rep *-*, end with 1 sl st to prev rnd's tr.

9th rnd: Work sl sts until mid of first ch-space, *1 dc + ch2 + 1 dc to the mid st of ch9, ch6*, rep *-*.

End this and all rem rnds same as 1st rnd.

10th rnd: Work sl sts until first ch2 pair, *2 dc + ch2 + 2 dc round ch2, ch5*, rep *-*.

11th rnd: Beg this and next rnds with working sl sts until ch2 in first

dc-cl = 2 dc + ch2 + 2 dc (round ch2 in prev rnd's dc-cl), *1 dc-cl, ch4*, rep *-*.

12th rnd: *1 dc-cl, ch4, 10 tr round ch2 in next dc-cl, ch4*, rep *-*

13th rnd: * 1 dc-cl, ch3, 1 tr to first of 10 tr, (ch1, 1 tr to next tr) rep 9 times, ch3*, rep *-*.

14th rnd: * 1 dc-cl, ch3, 1 sc round 1st and 2nd tr, (ch4, 1 sc round next ch-space) rep 8 times, ch3*, rep *-*.

15th rnd: * 1 dc-cl, ch3, 1 sc round 1st ch-space (with ch4), (ch4, 1 sc round next ch-space) rep 7 times, ch3*, rep *-*.

16th rnd: *2 dc + ch2 + 2 dc + ch2 + 2 dc round ch2 in dc-cl, ch3, 1 sc round 1st ch-space, (ch4, 1 sc round next ch-space), rep 6 times, ch3*, rep *-*.

17th rnd: *1 dc-cl, ch2, 1 dc-cl, ch3, 1 sc round 1st ch-space, (ch4, 1 sc rnd next ch-space), rep 5 times, ch3*, rep *-*.

18th rnd: *1 dc-cl, ch2, 1 dc-cl round ch2, ch2, 1 dc-cl, ch3, 1 sc round 1st ch-space, (ch4, 1 sc round next ch-space), rep 4 times, ch3*, rep *-*.

19th rnd: * 1 dc-cl, (ch3, 1 dc-cl), rep 2 times (= dc-cl), ch3, 1 sc round first ch-space, (ch4, 1 sc round next ch-space), rep 3 times, ch3*, rep *-*.

20th rnd: * 1 dc-cl, ch4, 2 dc + ch4 + 2 dc round ch2 in next dc-cl, ch4, 1 dc-cl, ch3, 1 sc round first ch-space, (ch4, 1 sc rnd next ch-space), rep 2 times, ch3*, rep *-*.

21st rnd: * 1 dc-cl, ch4, 12 tr round ch4 in next dc-cl, ch4, 1 dc-cl, ch3, 1 sc round first ch-space, ch4, 1 sc to round next ch-space, ch3*, rep *-*.

22nd rnd: * 1 dc-cl, ch3, 1 tr to 1st of 12 tr, (ch1, 1 tr to next tr), rep 11 times, ch3, 1 dc-cl, ch3, 1 sc round ch-space, ch3*, rep *-*.

Embellish with white pearls and silver sequins, if desired (see photo).

Viking Heklegarn Christmas Heart and Snowcrystal 1115-24

Size, heart approx. 6 x 6 cm

2.4 x 2.4 in

Size, snowcrystal diameter approx. 9 cm

3.5 in

ALTERNATIVE YARN: Viking Heklegarn (100% cotton), 100 g ball

White, 800 1 ball
(1 ball is enough for approx. 34 hearts or snowcrystals)
Use some rest yarn for making 1 heart or snowcrystal.

Crochet hook size 1,75 mm – US 4 – UK/Canadian 2
+ 2 heartshaped pearls

Abbreviations:

ch = chain stitch, sl st = slip stitch, sc = single crochet,
dc = double crochet, tr = treble, hdc = half double
crochet, ch-space = chain space

CHRISTMAS HEART

1st row: Ch17

2nd row: 1 dc to 8th ch-st from the hook, ch2, skip over
2 ch-sts, 1 dc, ch2, 1 dc, ch2, 1 dc to prev row's 1st ch-
st.

3rd row: Turn the work, ch5, 1 dc to prev row's dc,*
ch2, 1 dc to prev row's dc *, rep *-* 2 times more

4th and 5th row: Same as 3rd row

Grid with 16 squares is now formed.

6th row: Turn, 3 sc to 1st square, and 3 sc to 2nd square,
ch5 lm, 3 sc to next square (= corner). Next square: 3 sc
+ ch (= corner) + 3 sc, work along next side; 3 sc into 1st
square, ch5, 3 sc to next squares

7th row: Turn the work, 15 tr into ch-space, 1 sc into
corner, 15 tr to ch-space, 1 sl st to 3rd sc of last square.
Cont working in rnds with 3 sc to each square, into
corners 3 sc+ch1+3 sc. End with 1 sl st to 1st tr.

Break yarn, and weave in on WS.

Loop:

Insert hook into 14th tr on right hand side. Ch35, and
fasten with 1 sl st to 2nd tr on left hand side.

Break yarn, draw through the loop, and weave in on
WS. Sew one pearl on the upper edge mid front, and
another to hang 1 cm (in) mid lower edge.

SNOWCRYSTAL

Ch8, join into ring with 1 sl st.

1st rnd: 12 sc into ring, end with 1 sl st to 1st sc

2nd rnd: *1 tr, ch2*, rep *-* across the rnd, end with 1
sl st to 1st tr

3rd rnd: *1 sc to tr, ch4, 3 tr tog to 1st ch-space, ch4*,
rep *-* across the rnd, end with 1 sl st to 1st sc

4th rnd: Beg with 1 sl st to first tr-tog, *1 to tr-tog,
ch8*, rep *-* across the rnd, end with 1 sl st to 1st sc

5th rnd: 1 sc + 1 hdc + 3 dc + ch3 + 3 dc + 1 hdc + 1 sc
to each ch-space across the rnd, end with 1 sl st to 1st sc
Break yarn, and draw through the loop. Weave in ends
on WS.

Viking Heklegarn

Doilies **1115-25/26**

Diameter, number 25, approx. 13 cm

5.1 in

Diameter, number 26, approx. 14 cm

5.5 in

ALTERNATIVE YARN: Viking Heklegarn (100% cotton), 100 g ball

White, 800 1 ball
(1 ball is enough for approx. 33 doilies, number 25, or
approx. 25 doilies, number 26)

Crochet hook size 1,75 mm – US 4 – UK/Canadian 2

Abbreviations:

ch = chain stitch, sl st = slip stitch, sc = single crochet,
dc = double crochet, tr = treble, ch-space = chain space

pc = picot

1 pc: Ch3, 1 sc to top of prev dc

DOILY (1115-25)

Ch8, join into ring with 1 sl st

1st rnd: 12 sc into ring

2nd rnd: *1 dc, ch5, skip over 1 sc*, rep *-* across the
rnd = 6 ch-spaces, end with 1 sl st to 1st dc

3rd rnd: Beg with 1 sl st to 1st ch-space, *5 dc to ch-
space, ch3*, rep *-* across the rnd, end with 1 sl st to 1st
dc

4th rnd: *1 dc to each first 2 dc, 1 dc + ch3 + 1 dc to
next dc, 1 dc to next 2 dc, ch3*, rep *-* across the rnd,
end with 1 sl st to 1st dc

5th rnd: *1 dc to each 3 dc, ch3, 1 dc to ch-space, ch3, 1 dc to each next 3 dc, ch2*, rep *-* across the rnd, end with 1 sl st to 1st dc

6th rnd: *1 dc to each 3 dc, ch3, 1 dc+ch3+1 dc to next dc, ch3, 1 dc to each next 3 dc, ch1*, rep *-* across the rnd, end with 1 sl st to 1st dc

7th rnd: *1 dc to each 3 dc, ch3, skip 1 ch-space, 8 tr with ch1 between each tr to next ch-space, ch3, skip 1 ch-space, 1 dc to each next 3 dc*, rep *-* across the rnd, end with 1 sl st to 1st dc

8th rnd: *3 dc tog to next 3 dc, ch2, 1 dc to 1st of 8 tr, (1 pc, 1 dc to next tr) 3 times, 1 pc, 1 dc to next ch-st, (1 pc, 1 dc to next tr) 4 times, ch2, 3 dc tog to next 3 dc *, rep *-* across the rnd, end with 1 sl st to 1st dc

Break yarn, and draw through the loop. Weave in ends on WS.

Doily (1115-26)

Ch12, join into ring with 1 sl st

1st rnd: 24 dc into ring

2nd rnd: *1 tr, ch1 to each dc*, rep *-* across the rnd, end with 1 sl st to 1st tr (= 24 tr)

3rd rnd: *1 dc to tr, 2 dc to ch-st*, rep *-* across the rnd, end with 1 sl st to 1st tr

4th rnd: *1 sc to dc, ch8, skip 5 dc*, rep *-* across the rnd, end with 1 sl st to 1st sc

5th rnd: 9 sc to each ch-space across the rnd, end with 1 sl st to 1st sc

6th rnd: Beg with 1 sl st to 4th sc, *2 dc to 4th sc in the ch-space, 1 dc+ ch3+ 1 dc to next sc, 2 dc to next sc, ch5*, rep *-* across the rnd, end with 1 sl st to 1st dc

7th rnd: Beg with 1 sl st to 1st ch-space, *3dc + ch3 + 3 dc to 3ch-space, ch2, 1 sc to mid st of 5 ch-sts, ch2*, rep *-* across the rnd, end with 1 sl st to 1st dc

8th rnd: Beg with 1 sl st to 1st ch-space, *6 dc with 1 pc between each dc to 3ch-space, ch3, 1 sc to sc, ch3*, rep *-* across the rnd, end with 1 sl st to 1st dc

Break yarn, and draw through the loop. Weave in ends on WS.

Viking Heklegarn 1115-27

Runner

Size: approx. 120x30 cm
47.2x11.8 in

ALTERNATIVE YARN: Viking Heklegarn (100% cotton), 100 g ball

White, 800 1 ball
Crochet hook size 1,5 mm – US 7 – UK/Canadian 2.5

ch = chain stitch, dc = double crochet, dc-cluster = double crochet cluster, ch-space = chain space

RUNNER

Using crochet hook size 1,5 mm and white yarn, ch84. Note! Beg each row with ch3 = 1st dc. Work as foll:

1st row: 1 dc to 4th ch-st from the hook, 2 dc to next st (= 3 dc) – *ch5, skip next 5 ch-sts – 6 dc to next 6 ch-sts – ch2 – 1 dc to next st + ch3 (= ch-space = mid report) + 1 dc to same ch-st as last dc – ch2 – 6 dc to next 6 ch-sts – ch5 – skip next 5 ch-sts - 3 dc*, rep *-* 2 times more, end with 3 dc.

2nd row: Beg with ch3 (= 1st dc), 2 dc – *ch5, skip next 5 ch-sts, 5 dc – ch2 – skip 2 ch-sts + 1 dc, 5 dc to ch-space (= mid report) + ch2 + 5 dc to same ch-space – ch2 – 5 dc (skip first dc from prev row) – ch5, skip next 5 ch-sts – 3 dc*, rep *-* across the row, end with 3 dc.

3rd row: Beg with ch3 (= 1st dc) + 2 dc – *ch5, skip 5 ch-sts + 1 dc from prev row, 3 dc – ch2 – 4 dc to next dc-cluster + 2 dc to last dc (= 6 dc) – ch2 – 2 dc to first dc of prev row + 4 dc (= 6 dc) – ch2 – skip 1 dc, 3 dc – ch5, skip next 5 ch-sts – 3 dc*, rep *-* and end with 3 dc.

4th row: Beg with ch3 (= 1st dc) + 2 dc, *ch5 – 1 dc to mid dc-cluster – ch2 – 6 dc to next dc-cluster - ch2 – 1 dc + ch3 + 1 dc to same ch-space (= mid), ch2 – 6 dc to next dc-cluster – ch2 – 1 dc to prev row's mid st – ch5 – 3 dc*, rep *-* and end with 3 dc.

Rep 2nd – 4th row until runner measures approx. 120 cm (47.2 in), or until yarn finishes.

Viking Heklegarn 1115-28 Towels

Size: 30X45 cm
11.8x17.7 in

ALTERNATIVE YARN: Viking Heklegarn (100% cotton), 100 g ball

White, 800 1 ball

Pair of knitting needles size 3 mm – US 2 or 3 – UK/Canadian 11

Crochet hook size 3 mm – US C/2 or D/4 – UK/Canadian 11

Gauge: 28 sts = approx. 10 cm (4 in) over St st using needles size 3 mm. **Check your gauge to ensure success.**

Abbreviations:

Note! All towels are knitted with double yarn. Take one end from outside the ball, one from inside, and knit tog.

TOWEL (A)

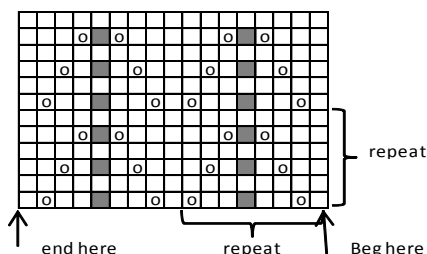
Using needles size 3 mm and double yarn, cast on 87 sts. *Work back and forth 6 rows in K3, P3 (end with 3K). Next row knit all k-sts, and purl all p-sts. Work next 6 rows in P3, K3*. Rep *-* until work measures approx. 45 cm (17.7 in). Bind off.

TOWEL (B)

Using needles size 3 mm and double yarn, cast on 87 sts. Work back and forth 12 rows in Garter st. Cont working first and last 8 sts in Garter st, rest in St st. When work measures approx. 41 cm (16.1 in), work 12 rows in Garter st. Bind off.

TOWEL (C)

Using needles size 3 mm and double yarn, cast on 91 sts. Beg with 1 selvage st (knit every row), patt as charted, end with 1 selvage st. When work measures approx. 45 cm (17.7 in), bind off. If desired, you can crochet 1 rnd sc to all edges.



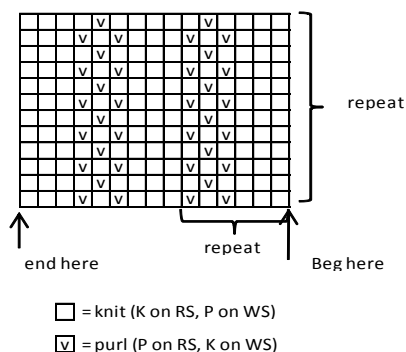
- = knit (K on RS, P o WS)
- = 1 yo
- = sl 1 st, K2tog, pssso

TOWEL (D)

Using needles size 3 mm and double yarn, cast on 87 sts. Work in Garter st until work measures approx. 45 cm (17.7 in). Bind off.

TOWEL (E)

Using needles size 3 mm and double yarn, cast on 87 sts. Work in patt as charted until work measures approx. 45 cm (17.7 in). Bind off.



- = knit (K on RS, P on WS)
- ∇ = purl (P on RS, K on WS)

Viking Heklegarn 1115-29

Wash cloths

Size: 27X30 cm
10.6x11.8 in

ALTERNATIVE YARN: Viking Heklegarn (100% cotton), 100 g ball

White, 800 1 ball

Pair of knitting needles size 3 mm – US 2 or 3 – UK/Canadian 11
Crochet hook size 3 mm – US C/2 or D/3 – UK/Canadian 11

Gauge: 28 sts = approx. 10 cm (4 in) over St st using needles size 3 mm. **Check your gauge to ensure success.**

Note! All wash cloths are worked with double yarn. Take one end from outside the ball, another from inside, and knit tog.

WASH CLOTH (A)

Using needles size 3 mm and double yarn, cast on 75 sts. *Work back and forth 6 rows in K3, P3 (end with K3). Next row: knit all k-sts, purl all p-sts. Work next 6 rows in P3, K3*. Rep *-* until work measures approx. 30 cm (11.8 in). Bind off.

Crochet a loop to one corner, ch10, and fasten with 1 sl st.

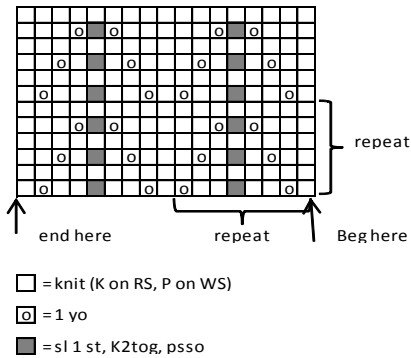
WASH CLOTH (B)

Using needles size 3 mm and double yarn, cast on 75 sts. Work back and forth 12 rows in Garter st. Cont working first and last 6 sts in Garter st, and rest in St st. When work measures approx. 26 cm (10.2 in). End with 12 rows in Garter st. Bind off. Crochet a loop to one corner, ch10, and fasten with 1 sl st.

WASH CLOTH (C)

Using needles size 3 mm and double yarn, cast on 75 sts. Beg with 1 selvage st, work in patt as charted + 1 selvage st. Work until work measures approx. 30 cm

(11.8 in). Bind off. If desired, crochet 1 rnd sc to each edge.

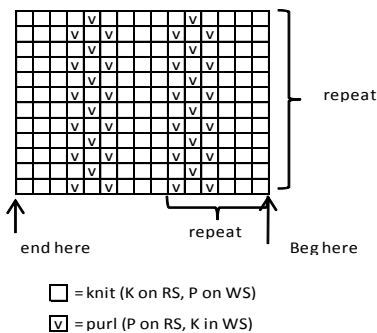


WASH CLOTH (D)

Using needles size 3 mm and double yarn, cast on 75 sts. Work in Garter st until work measures approx. 30 cm (11.8 in). Bind off.

WASH CLOTH (E)

Using needles size 3 mm and double yarn, cast on 75 sts. Cont working in patt as charted until work measures approx. 30 cm (11.8 in). Bind off.



Viking Bjørk Napkin

1115-30

Size 35 X 45 cm
13.8 x 17.7 in

ALTERNATIVE YARN: Viking Bjørk (90% cotton, 10 % merino wool), Viking Alpaca Silk (50% alpaca, 50% silk), 50 g ball

Red, 550 (Heather, 568) 2 balls

White, 500 (Light Violet, 567) 1 ball

Circular needle size 3 mm – US 2 or 3 – UK/Canadian 11

Gauge: 25 sts = approx. 10 cm (4 in) over St st using needles size 3 mm. **Check your gauge to ensure success.**

NAPKIN

Using red/heather clr yarn, cast on 103 sts. Work 4 cm (1.6 in) in Garter st. Beg patt on RS row:

1st row: - with red/heather clr yarn, *K3, sl 1 st purlwise with yarn **back** of work*, rep *-*, end with K3.

2nd row: - with red/heather clr yarn, *K3, sl 1 st purlwise with yarn **front** of work*, rep *-*, end with K3.

3rd row: - with white/light violet clr yarn, *K1, sl 1 st with yarn **back** of work, K2 *, rep *-*, end with sl 1 st purlwise, K1.

4th row: - with white/light violet, *K1, sl 1 purlwise with yarn **front** of work, K2*, rep *-*, end with sl 1 st purlwise, K1.

Rep 1st-4th row's patt until 31cm (12.2 in), measured from cast-on edge. Work 4 cm (1.6 in) in Garter st with red/heather clr yarn. Bind off.

Sides: Pick or knit up from left short edge approx. 84 sts with red/heather clr yarn. Work back and forth 4 cm (1.6 in) in Garter st. Bind off sts. Work same for right short edge.

Pocket

Using red/heather clr yarn, cast on 22 sts. Work back and forth 8 cm (in) rib. Change to white/light violet yarn, and work back and forth 3 cm (1.2 in) in K2,P2 rib. Bind off rather loosely. Sew pocket on right hand side of napkin.

Weave in all ends on WS.

Viking Bjørk

Pot holder and wash cloth 1115-31/32

Size: approx. 21x21 cm
8.3x8.3 in

ALTERNATIVE YARN: Viking Bjørk (90% cotton, 10% merino wool), 50 g ball

1 pot holder

Red, 550 2 balls

White, 500 1 ball

(some white cotton yarn)

1 wash cloth

Red, 550 1 ball

Pair of knitting needles or short circular needle size 3 and 4 mm – US 2 or 3 and 6 – UK/Canadian 11 and 8

Crochet hook size 3 mm – US C/2 or D/3 –

UK/Canadian 11

Gauge: 23 sts = approx. 10 cm (4 in) over St st using needles size 3½ mm. 21 sts = approx. 10 cm (4 in) over Double Seed st with double yarn using needles size 4

mm. 16 sts = approx. 10 cm (4 in) over Double Seed st with 4-double yarn using needles size 4 mm. **Check your gauge to ensure success.**

Double Seed Stitch:

1st row: K2, P2

2nd row: Knit all k-sts, purl all p-sts.

3rd row: P2, K2

4th row: Purl all p-sts, knit all k-sts.

Rep 1st-4th row

POT HOLDER

Back: Using needles size 4 mm and 4-doubled yarn, cast on 34 sts. Work back and forth in Double Seed st. When work measures approx. 21 cm (8.3 in) (or is square shaped), bind off.

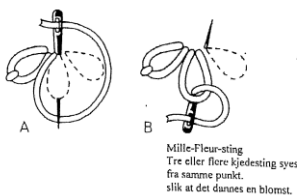
1 "pocket" (= front): Using needles size 3½ mm and single red yarn, cast on 53 sts. Work back and forth in St st. When work measures 11 cm (4.3 in), bind off 1 st beg of each RS row. Rep dec until work measures 21 cm (8.3 in) (or same as back). Bind off.

Using crochet hook size 3 and white yarn, crochet 1 row sc across slanted edge of the pocket.

Embroider 3 Lazy Daisy sts with white yarn to lower left corner of the pocket.

Pin pocket on back piece, and sew on with buttonhole sts and double red yarn. Cont sewing buttonhole sts around all edges of the pot holder.

Crochet a loop to one corner: Insert hook to one corner, fasten yarn with 1 sl st, ch20, and join into a loop with 1sl st. Turn, and work 20 sc into loop. Fasten with 1 sl st. Weave in all ends on WS.



Lazy Daisy st: 3 or more chain sts

worked in a circle to form a flower

WASH CLOTH

Using needles size 4 and double red yarn, cast on 46 sts. Work back and forth in Double Seed st. When work measures 21 cm (8.3 in) (or is square shaped), bind off. Weave in all ends on WS.

Viking Naturgarn

1115-33

Cushion

Size: approx.

50x50 cm

19.7x19.7 in

ALTERNATIVE YARN: Viking Naturgarn (100 % wool), Viking Alpaca Superfine (100% alpaca), 50 g ball, Viking Balder (100% wool, superwash), 100 g skein

Red, 654

9

balls

Circular needle size 7 mm – US 10½ or 11 – UK/Canadian 2

+ 3 buttons

Gauge: 12 sts = approx. 10 cm (4 in) over St st using needles size 7 mm. **Check your gauge to ensure success.**

CUSHION

Using needles size 7 mm, cast on 60 sts. Work back and forth in Garter st. When work measures approx. 105 cm (41.7 in), make 3 buttonholes: Beg from RS, K12 – bind off next 2 sts for buttonhole (next row: cast on 2 sts over the bound-off sts) – K15 – bind off 2 sts for buttonhole – K15 – bind off 2 sts for buttonhole – K12. Cont working back and forth until work measures 110 cm (43.3 in). Bind off. Sew side seams, **but** fold bound-off edge approx. 15 cm (5.9 in) over first 10 cm (4 in) of cast-on edge. Sew on buttons.

Viking Naturgarn

1115-34

Cushion

Size: approx.

50x50 cm

19.7x19.7 in

ALTERNATIVE YARN: Viking Naturgarn (100 % wool), Viking Alpaca Superfine (100% alpaca), 50 g ball, Viking Balder (100% wool, superwash), 100 g skein

Violet, 668

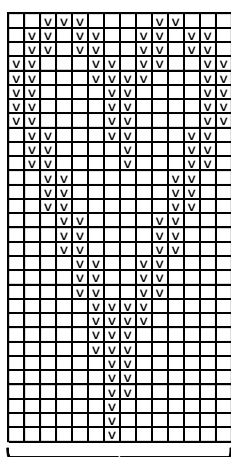
9 balls

Long circular needle size 7 mm – US 10½ or 11 – UK/Canadian 2

Gauge: 12 sts = approx. 10 cm (4 in) over St st using needles size 7 mm. **Check your gauge to ensure success.**

CUSHION

Using needles size 7 mm, cast on 120 sts. Work in rnds in K2,P2 rib. When work measure approx. 9 cm (3.5 in), place markers each side, 60 sts for both sides. Work 10 rnds in St st. Beg patt for front: Beg from sidemarker, St st over 23 sts – patt over 14 sts – St st over 23 sts. Work St st over sts for back. Cont working in rnds as established until patt is ready. Work 10 rnds in St st over all sts. Cont working in rnds approx. 9 cm (3.5 in) in rib. Size of the cushion is now approx. 50x50 cm (19.7x19.7 in). Bind off, or slip sts on holder. Weave in all ends on WS. Join bound-off edge seam. Slip in inner cushion, and join cast-on edge (sew a 40 cm (15.7 in) long zipper in the middle, and sew the seams on each side).



□ = knit
 ▣ = purl

PATTERN OVER 14 STS

Viking Superwash 1115-35 Christmas gnomes

Size

Circumference, body and head, approx.	40 cm 15.7 in
Length, body and head, approx.	40 cm 15.7 in
Arm, length, approx.	30 cm 11.8 in
Leg length, approx.	47 cm 18.5 in
Total length, with hat, approx.	100 cm 39.4 in
Circumference, body, approx.	46cm 18.1 in

ALTERNATIVE YARN: Viking Superwash (100% wool, superwash), Viking Sportsgarn (100% wool),

Viking Sportsragg (60% wool, 20% nylon, 20% acrylic), Viking Alpaca Sport (30% alpaca, 40% merino wool, 30% nylon), Viking Milk and Honey (70% cotton, 30% milk fiber), 50 g ball

GNOME GIRL

Beige, 107 4 balls
 Red, 150 6 balls
 White, 100 3 balls
 Black, 103 1 ball

GNOME BOY

Beige, 107 3 balls
 Red, 150 5 balls
 White, 100 1 ball
 Grey, 115 3 balls
 Black, 103 1 ball

+ some Brown rest yarn.

Double pointed needles and short circular needle size 3 and 3 ½ mm – US 2 or 3 and 4 – UK/Canadian 11 and 10 or 9

Some embroidery yarn for face, silk band for girl and leather cord for boy gnome, filling fiber, 2 white felt hearts, elastic.

Gauge: 23 sts = approx. 10 cm (4 in) over St st using needles size 3 ½ mm. **Check your gauge to ensure success.**

GNOME GIRL

Beg from lower edge of the body. Using short circular needle size 3½ mm and beige yarn, cast on 91 sts. Work in rnds in St st until work measures approx. 35 cm (13.8 in). Dec for head: *K5, K2tog*, rep *-* across the rnd, work 2 rnds without dec. *K4, K2tog*, rep *-* across the rnd, work 2 rnds without dec. Rep dec every 3rd rnd, with 1 st less between each dec until 26 sts rem. Next rnd: Knit all sts tog in pairs, work 1 rnd without dec = 13 sts. Break yarn, thread through rem sts, pull tightly, and weave in on WS.

Fill in body with filling fiber. Twist beige yarn around neck (approx. 1/3 from bound-off edge), pull tightly, and weave in on WS. Put work aside.

Arms

Beg from upper edge. Using dpn 3½ mm and beige yarn, cast on 36 sts. Work in rnds in St st until arm measures 19 cm (7.5 in). Place markers each side, 18 sts for both sides. Change to red yarn, and cont working for "mittens": Work with stripes, 2 rnds in red, 2 rnds in white. When stripe patt measures 3 cm (1.2 in), work for thumb opening as foll: K2, slip 6 sts on holder, cast on 6 new sts. Work in rnds 4 cm (1.6 in) more with stripes. Beg dec: *K4, K2tog*, rep *-* across the rnd, work 1 rnd without dec. *K3, K2tog*, rep *-* across the

rnd, work 1 rnd without dec. Rep dec with 1 st less between each dec until 12 sts rem. Next rnd: Knit all sts tog in pairs. Break yarn, thread through rem sts, pull tightly, and weave in on WS.

Thumb: Slip sts from holder on dpn size 3½ mm, and pick or knit up 6 sts from cast-on edge + 1 st each side = 14 sts. Work in rnds in St st with stripes. When thumb measures approx. 2 ½ cm (1 in), knit all sts tog in pairs. Break yarn, and thread through rem sts. Weave in all ends on WS.

Work same for the other arm, with thumb on the other side.

Fill in arms with filling fiber.

Legs: Beg from upper edge. Using dpn size 3½ mm and red yarn, cast on 42 sts. Work in rnds in St st with stripes, 2 rnds in red, 2 rnds in white until work measures 40 cm (15.7 in). Work 3 rnds with black, 4 rnds in red, and 8 rnds in black. Cont working with black yarn, and dec as foll: *K4, K2tog*, rep *-* across the rnd, work 1 rnd without dec. *K3, K2tog*, rep *-* across the rnd, work 1 rnd without dec. Rep dec with 1 st less between each dec until 14 sts rem. Next rnd: Knit all sts tog in pairs. Break yarn, and thread through rem sts. Weave in all ends on WS.

Work same for the other leg.

Fill in legs with filling fiber.

Finishing: Fasten legs inside body's cast-on edge, and sew the lower edge seam at the same time.

Sew arms each side of the body.

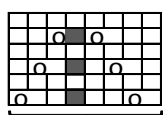
HAT

Using short circular needle and red yarn, cast on 96 sts. Work in rnds 4 cm (1.6 in) in K2,P2 rib. Place 4 marker across the rnd, with 24 sts between each marker.

Change to needles size 3 ½ mm, and cont working in rnds in St st. Dec 1 st before each marker. Rep dec every 4th rnd until 4 sts rem. Break yarn, and thread through rem sts. Weave in all ends on WS. Make a pompon with white yarn, and fasten on top.

DRESS

Beg from lace edge. Using circular needle size 3 mm and white yarn, cast on 112 sts. Work in 2 rnds in Garter st. Cot working in patt as charted, rep altog. 2 times in height (= lace edge).



repeat

□ = K1 (K on RS, P on WS)

◻ = 1 yo

■ = sl 1 st, K2tog, pss0

Change to needles size 3½ mm and red yarn. Knit 1 rnd, adjusting evenly across the rnd number of sts to be 115 sts. Knit 3 rnds. Next rnd: *K3, 1 yo, K2tog*, rep *-* across the rnd. Knit 4 rnds. Next rnd, folding edge: using an extra needle, pick up from WS 1 st from **each** st along first rnd worked with red yarn. Keep needles side by side, and knit sts tog from both needles across the rnd = **folding edge**. Place markers each side, 57 sts for front and 58 sts for back.

Cont working in rnds in St st. Dec 1 st at each side approx. every 2 cm (0.8 in) until 99 sts rem (= 49 sts for front, and 50 sts for back). When dress measures 23 cm (9.1 in), measured from cast-on edge (or as desired), bind off at each edge 8 sts (= 4 sts both sides of the markers). Finish back and forth separately.

Back

Cont working back and forth in St st. Bind off at each edge every 2nd row 1x2, and 1x1 st. When armhole measures 5 cm (2 in), divide work mid back for split, 18 sts for each side. Finish both sides separately.

Back, right side: Cont working back and forth in St st until armhole measures approx. 9 cm (3.5 in). Bind off.

Back, left side: Work same as for right side.

Front

Cont working back and forth in St st. Bind off for armholes same as for back. When armhole measures approx. 7 cm (2.8 in), bind off 13 mid sts for neck edge. Finish each side separately. Bind off at neck edge every 2nd row 1x3, 1x2, and 1x1 st (= 5 sts rem). When armhole measures same as back, bind off. Work same for the other side, rev all shaping.

Sleeves

Using needles size 3 mm and white yarn, cast on 48 sts. Work 2 rnds in Garter st. Cont working in patt (= lace edge). Change to needles size 3 ½ mm and red yarn. Work folding edge same as for dress. Place a marker mid under arm (= beg of rnd). Work 6 cm (2.4 in) in rnds in St st, and dec 1 st both sides of the marker every 2 cm (0.8 in) until 42 sts rem. Bind off 8 sts mid under arm (= 4 sts both sides of the marker). Cont working back and forth in St st. Bind off at each edge every 2nd row 1x2, and 1x1 st. Bind off.

Work same for the other sleeve.

Finishing

Sew shoulder seams. Sew on sleeves.

Neck band

Beg mid back from split, using needles size 3 mm and white yarn, pick or knit up from WS 49 sts along neck edge. Work back and forth in patt as charted (= lace edge, folded on RS). Last patt row: Inc 1 st between each patt report = 6 more sts. Rep patt and inc 1 more

time, with 1 extra st between each patt repeat = 61 sts. Work 2 rows in Garter st. Bind off rather loosely. Weave in all ends on WS. Sew one snap fastener to the split on back. Sew on with red yarn a white felt heart on front (see photo).

Bag

Using dpn size 3 mm and white yarn, cast on 40 sts. Work 2 rnds in Garter st. Work patt as charted, 2 times in height. Purl 1 rnd = folding edge. Change to needles size 3 ½ mm and red yarn. Turn inside out, and work 10 cm (4 in) in St st. Bind off. Sew bound-off seam. Fold white patt edge on RS. Twist a cord using double red yarn, approx. 80 cm (in) long, and fasten inside the bag on each side. Sew on with red yarn a white felt heart (see photo). Weave in all ends on WS. Use brown yarn for sewing on fringe. Using brown yarn, make 2 approx. 35 cm (13.8 in) long plaits, and fasten each side of the head. **Note:** Check that hat covers fastening of plaits and fringe. Tie silk ribbons to both plaits. Sew on the hat. Embroider eyes, eye brows, nose and mouth (see photo). Sew buttons on shoe straps. Hang bag on shoulder, and fasten on shoulder with few sts.

GNOME BOY

Body

Work same as for gnome girl.

Sleeves: Work same as for gnome girl, but without stripes, with red yarn only.

Legs: Beg from upper edge. Using dpn size 3½ mm and red yarn, cast on 42 sts. Work in rnds in St st until leg measures 40 cm (15.7 in). Change to black yarn, and work 5 cm (2 in) in St st for "shoe". Dec as foll: *K4, K2tog*, rep *-* across the rnd, work 1 rnd without dec. *K3, K2tog*, rep *-* across the rnd, work 1 rnd without dec. Rep dec with 1 st less between each dec until 14 sts rem. Next rnd: Knit all sts tog in pairs. Break yarn, thread through rem sts. Weave in all ends on WS.

Work same for the other leg.

Fill in legs with filling fiber.

HAT

Work same as for gnome girl.

PANTS

Using circular needle size 3 mm and grey yarn, cast on 108 sts. Work in rnds 6 cm (2.4 in) in K2,P2 rib. Change to needles size 3 ½ mm. Knit 1 rnd, adjusting evenly across the rnd number of sts to be 116 sts. Work in rnds 8 cm (3.1 in) in St st. Place markers mid front and back, 58 sts for both sides. Inc 1 st every 2nd rnd both sides of the markers altog. 3 times = 128 sts. Bind off 3 sts both sides of the markers = 12 bound-off sts. Finish each leg separately.

Slip 58 sts on dpn size 3½ mm. Beg rnd from inner seam. Work in rnds 9 cm (3.5 in) in St st, and dec 1 st beg of rnd approx. every 3 cm (1.2 in) altog. 3 times = 55 sts. Purl 1 rnd = folding edge. Work 4 rnds in St st. Bind off.

Work same for the other leg.

Fold waist rib in double, and sew on WS. Thread elastic on waist. Fold leg edges in double, and sew on WS.

SWEATER

Using needles size 3½ mm and red yarn, cast on 100 sts. Work 5 rnds in St st. Next rnd = eyelet rnd (= folding edge): *K2tog, 1 yo*, rep *-* across the rnd. Work 5 rnds in St st. Cont working in stripes: *2 rnds in white – 2 rnds in grey – 2 rnds in red*, rep *-* until the end. When work measures 14 cm (5.5 in) (measured from folding edge), place markers each side, 50 sts for both back and front. Bind off 2 sts both sides of the markers = 46 sts for both sides. Put work aside, and knit the sleeves.

Sleeves

Using dpn size 3 mm and grey yarn, cast on 44 sts. Work 5 rnds in K2,P2 rib. Change to needles size 3 ½ mm. Work in St st with stripes same as for body. When sleeve measures approx. 6 cm (2.4 in), measured from cast-on edge, bind off 4 sts mid under arm. (**Note**, end with same clr stripe as body).

Put work aside, and knit the other sleeve.

Yoke: Slip sts on same circular needle size 3½ mm, sleeve sts above the bound-off sts for armholes = 172 sts. Place markers at each seam line. Cont working in rnds in St st with stripes. Beg raglan-dec: K2togtbl before each marker, and K2tog after each marker. Rep dec every 2nd rnd altog. 13 times = 68 sts rem. Work 1 more rnd with last stripe clr. Change to needles size 3 mm and grey yarn. Work back and forth 3 cm (1.2 in) K2,P2 rib. Bind off rather loosely in rib.

Sew underarm seams.

Weave in all ends on WS.

Sew a snap fastener to the split on back.

Using brown yarn, twist some curls, and sew on as a fringe. Sew on the hat.

Note: Check that hat covers sts fasten the fringe.

Embroider eyes, eye brows, nose and mouth (see photo).

Thread leather cord as shoelaces. Twist cord 3 times around ankles and tie on the sides with approx. 8 cm (3.1 in) ends (see photo).

Make a white pom-pon, diameter approx. 7 cm (2.8 in), and fasten on top.