

Viking Baby Ull

1114-1

Cardigan, trousers, socks and hat

Size: BabyB/Prem 1 3/6 9/12 18/ 24months 3/4 yrs

CARDIGAN

Chest: approx.	40	48	56	59	62	65 cm
	15.7	18.9	22	23.2	24.4	25.6 in
Length: approx.	16	20	25	29	34	38 cm
	6.3	7.9	9.8	11.4	13.4	15 in
Sleeve length:	14	16	19	22	26	30 cm
	5.5	6.3	7.5	8.7	10.2	11.8 in

TROUSERS

Width: approx.	32	45	56	60	63	67 cm
	12.6	17.7	22	23.6	24.8	26.4 in
Leg length:	12	14	16	20	25	30 cm
	4.7	5.5	6.3	7.9	9.8	11.8 in

ALTERNATIVE YARN: Viking Baby Ull (100% merino wool, superwash), Viking Milk fiber (100% milk fiber), 50 g ball

CARDIGAN AND HAT

Light Blue, 320	2	2	3	3	4	4 balls
White, 300	1	1	1	1	1	1 ball

TROUSERS AND SOCKS

Light Blue, 320	2	2	3	3	4	4 balls
White, 300	1	1	1	1	1	1 ball

Double pointed needles and circular needle size 2½ and 3 mm – US 1 or 2 and 2 or 3 – UK/Canadian 13 or 12 and 11
+ 4-4-5-5-5 buttons for cardigan
+ 2 buttons for trousers

Gauge: 28 sts = approx. 10 cm (4 in) over St st using needles size 3 mm. **Check your gauge to ensure success.**

CARDIGAN

Using needles size 2½ mm and light blue yarn, cast on 121-145-169-177-185-193 sts. Work back and forth 3 cm (1.2 in) in K1,P1 rib. **When** work measures 1½ cm (0.6 in), make a buttonhole at LH edge: bind off 2 sts inside 3 sts. Next row: Cast on 2 sts over bound-off sts. Slip first and last 8 sts on holder (= front edges) = 105-129-153-161-169-177 sts rem. Change to needles size 3 mm. Work 2 rows in St st. Place markers each side, 55-67-79-83-87-91 sts for back, and 25-31-37-39-41-43 sts for each front. Cont working back and forth in St st and patt I as charted. When patt is ready, cont working in St st with light blue yarn until work measures 8-11-15-18-22-25 cm (3.1-4.3-5.9-7.1-9.8 in). Bind off at each side 8 sts (4 sts both sides of the markers). Finish back and fronts separately.

Back

Cont working back and forth. Bind off at each edge every 2nd row 1x2, and 1x1 st. When work measures approx. 9-13-17-21-26-29 cm (3.5-5.1-6.7-8.3-10.2-11.4 in) work patt II as charted. Cont working in St st with light blue yarn until work measures 16-20-25-29-34-38 cm (6.3-7.9-9.8-11.4-13.4-15in), and armhole measures 8-9-10-11-12-13 cm (3.1-3.5-4-4.3-4.7-5.1 in) Bind off rather loosely.

Right front

Work same as for ack. When work measures 2-3-3-3-4-4 cm (0.8-1.2-1.2-1.2-1.6-1.6 in) less than total length, bind off at neck edge every 2nd row 1x7-7-9-11-13-15, 1x3, and 2x1 st (same for all sizes). When work measures same as back, bind off rather loosely.

Work same for left front, rev all shaping.

Sleeves

Using dpn size 2½ mm and light blue, cast on 28-32-34-36-38-40

sts. Work in rnds 3 cm (1.2 in) in K1,P1 rib. Change to needles size 3 mm. Knit 1rnd, adjusting evenly across the rnd the number of sts to be 35-39-43-45-47-49 sts. Work 2 rnds in St st with light blue yarn. Cont working in patt I as charted (check from mid st where to beg patt). When patt is ready, cont working in St st with light blue yarn. Place a marker mid under arm. Inc 1 st both sides of the marker approx. every 2 cm (0.8 in) (same for all sizes) until you have altog. 45-51-57-61-67-73 sts on a rnd. When work measures 14-16-19-22-26-30 cm (5.5-6.3-7.5-8.7-10.2-11.8 in), bind off 8 sts mid under arm (4 sts both sides of the marker). Cont working back and forth, and bind off at each edge every 2nd row 1x2, and 1x1 st. Bind off rem sts. Work same for the other sleeve.

Finishing

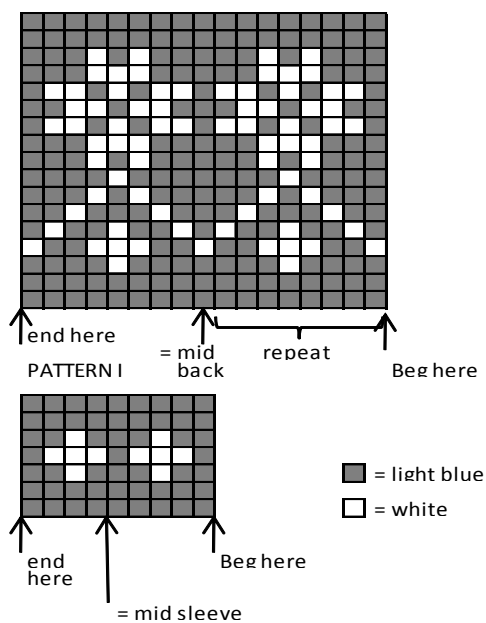
Sew shoulder seams.

Right front edge: Slip 8 sts from holder on needles size 2½ mm. Work back and forth in rib until edge reaches up to neck edge (do not stretch the edge when measuring). Put work aside. Work same for **left edge**, **but** make 2-2-3-3-3-3 buttonholes evenly across the edge (Note! Last buttonhole will be made on neckband). Work until edge reaches neck edge. Sew front bands to the front pieces.

Neckband: Slip front edge sts on short circular needle size 2½ mm, and using light blue yarn pick or knit up approx. 68-74-88-92-98-102 sts across the neck edge. Work back and forth 2 cm (0.8 in) in K1,P1 rib, **but** when neckband measures 1 cm (in), make last buttonhole on LH edge. Bind off in rib.

Sew on sleeves. Weave in all ends on WS. Sew on the buttons.

PATTERN II



TROUSERS

Leg from up front: Using needles size 3 mm and light blue yarn, cast on 21-29-31-33-35-37 sts. Work back and forth 2 rows in P1,K1 rib. Next row: Make buttonholes at each edge inside 3 sts. Buttonhole: Bind off 2 sts. Next row: Cast on 2 sts over the bound-off sts. Work altog. 6 rows in rib. Cont working in St st inside 5 sts at each edge (= worked in rib). Inc 1 st at each edge inside 5 rib sts. Rep inc every 2nd row until you have 37-49-59-63-65-69 sts on a row. Put work aside. Work same for back, but without buttonholes. Slip both pieces on same circular needle, and cast on 9-11-13-13-13-13 sts between pieces = mid under arms = 92-120-144-152-156-164 sts. Work 1-1-2-2-3-3 cm (0.4-0.4-0.8-0.8-1.2-1.2 in) in St st (**Note!** New cast-on sts are worked in rib over first 2-2-3-3-5-5 rnds). Work 4-4-5-5-6-6 cm (1.6-1.6-2-2-2.4-2.4 in) in K1,P1 rib. Next rnd: Inc evenly across the rnd

8-12-12-16-20-24 sts = 100-132-156-168-176-188 sts. Place markers each side, 51-67-79-85-89-95 sts for front, and 49-65-77-83-87-93 sts for back + place markers mid front and back. Work short rows to rise the back of the trousers: Beg from mid back, K7, turn, P15. Cont working 7 more sts before each turning 2-3-4-4-5-5 times more for each side. Knit 1 rnd over all sts. Cont working in rnds in St st until work measures approx. 6-12-14-15-17-20 cm (2.4-4.7-5.5-5.9-6.7-7.9 in) (or as desired), measured from inc after ribbing. Inc 1 st both sides of markers mid front and back. Rep inc every 2nd rnd altog 5-5-5-6-6-6 times = 20-20-20-24-24-24 inc sts. Next rnd: Bind off mid front 10-10-10-12-12-12 sts, and mid back 10-10-10-12-12-12 sts. Work legs separately (= 50-66-78-84-88-94 sts). Work in St st until leg measures approx 4-6-8-12-17-22 cm (2.8-3.5-4.3-5.9-7.9-9.8 in) (or desired length). Work patt II as charted. Cont working in St st with light blue yarn until leg measures 9-11-13-17-22-27 cm (3.5-4.3-5.1-6.7-8.7-10.6 in). Next rnd: Dec evenly across the rnd the number of sts to be 40-44-48-48-52-52 sts. Work in rnds 3 cm (1.2 in) in K1,P1 rib. Bind off. Work same for the other leg.

Finishing

Sew crotch seam.

Straps: Using needles size 2½ mm and light blue yarn, cast on 7 sts. Work approx. 5-5-6-6-7-8 cm (2-2-2.4-2.4-2.8-3.1 in) in K1,P1 rib. Bind off. Work same for the other strap. Sew straps on back (inside rib), and sew on buttons

SOCKS

Using dpn size 2½ mm and light blue yarn, cast on 30-36-40-42-44-46 sts. Work in rnds 5-6-6-7-7-8 cm (2-2.4-2.4-2.8-2.8-3.1 in) in K1,P1 in rib. Change to needles size 3 mm, and work for heel over mid back 15-18-20-21-22-23 sts: Knit until 1st rem, turn, and purl until 1 st rem, turn and work each row 1 st less until 5-6-6-7-8-9 mid sts rem. Turn, and work 1 st more each row. M1 between last mid st and next st in order to avoid holes in the work, knit these 2sts tog. When all sts are returned back to work, cont working in rnds in St st over all sts. When foot measures 5-7-8-9-10-11 cm (2-2.8-3.1-3.5-4-4.3 in), or desired length, beg dec: K2tog beg of each needle every 2nd rnd 3-3-4-4-4-4 times, and then every rnd until 10-8-8-10-8-10 sts rem. Break yarn, thread through rem sts, and weave in on WS. Work same for the other sock.

HAT

Beg from one ear flap. Using needles size 3 mm and light blue yarn, cast on 3 sts. Work back and forth in K1,P1 rib, and 1 st beg of each row until you have 19-21-23-23-25-27 sts on a row = 1 ear flap. Work same for the other ear flap. Slip ear flaps on same short circular needle, and cast on 37-39-41-47-47-49 sts between ear flaps (= front), and 15-17-19-21-21-23 sts for back (between ear flaps) = 90-98-106-114-118-126 sts. Cont working in rnds in K1,P1 rib until work measures 8-10-13-14-15-16 cm (3.1-4-5.1-5.5-5.9-6.3 in) (measured mid front). Beg dec: Knit all sts tog in pairs. Knit 2 rnds without dec. Rep dec 2 times more. Break yarn, thread through rem sts, and weave in on WS. Twist 2 cords (approx. 20 cm (7.9 in) long), and fasten them to ear flaps. Weave in all ends on WS.

Viking Baby Ull 1114-2

Sweater, pants, hat, socks and blanket

Size:	6/9	12/18months	2
3 yrs			
Chest: approx.	48	55	59
64 cm			
	18.9	21.7	23.2
25.2 in			
Length: approx.	26	32	36
42 cm			
	10.2	12.6	14.2
16.5 in			
Sleeve length: approx.	15	20	23
31 cm			
	5.9	7.9	9.1
12.2 in			
Leg length: approx.	18	23	28
33 cm			
	7.1	9.1	11

13 in

ALTERNATIVE YARN: Viking Baby Ull (100% merino wool, superwash), Viking Milk fiber (100% milk fiber), 50 g ball

SWEATER

Grey, 315	3	3	4	4 balls
Pink, 361	1	1	1	1 ball
White, 300	1	1	1	1 ball
Light Yellow, 342	1	1	1	1 ball
Mint Green, 327	1	1	1	1 ball

SOCKS AND HAT

Grey, 315	1	1	1	1 ball
Pink, 361	1	1	1	1 ball
White, 300	1	1	1	1 ball
Light Yellow, 342	1	1	1	1 ball
Mint Green, 327	1	1	1	1 ball

PANTS

Pink, 361	3	3	3	4 balls
-----------	---	---	---	---------

BLANKET

Grey, 315	3 balls
Pink, 361	1 ball
Light Yellow, 342	1 ball
Mint Green, 327	1 ball

Double pointed needles size 2½ and 3 mm – US 1 or 2 and 2 or 3 – UK/Canadian 13 or 12 and 11.

Crochet hook size 3 mm – US C/2 or D/3 – UK/Canadian 11
+ 1 small button for sweater
+ elastic for pants

Gauge: 28 sts = approx. 10 cm (4 in) over St st using needles size 2½ and 3 mm. **Check your gauge to ensure success.**

SWEATER

Using needles size 3 mm and pink yarn, cast on 134-154-166-180 sts. Work 3 cm (1.2 in) in St st. Next rnd: *K2tog, 1 yo*, rep *-* across the rnd (= folding edge). Change to grey yarn, and work 3 cm (1.2 in) in St st. Place markers each side, 67-77-83-91 sts for front, and 67-77-83-89 sts for back. When work measures 17-22-25-31 cm (6.7-8.7-9.8-12.2 in), bind off 10 sts each side (5 sts both sides of the markers). Put work aside.

Sleeves

Using needles size 3 mm and pink yarn, cast on 38-40-42-44 sts. Work 2 cm (0.8 in) in St st. Next rnd: *K2tog, 1 yo*, rep *-* across the rnd. Change to grey yarn, and work 2 cm (0.8 in) in St

st. Knit 1 rnd, adjusting evenly across the rnd the number of sts to be 52-56-60-64 sts. Cont working in St st until work measures the given length, or as desired. Bind off 10 sts mid under arm (5 sts both sides of the marker). Put work aside, and knit the other sleeve.

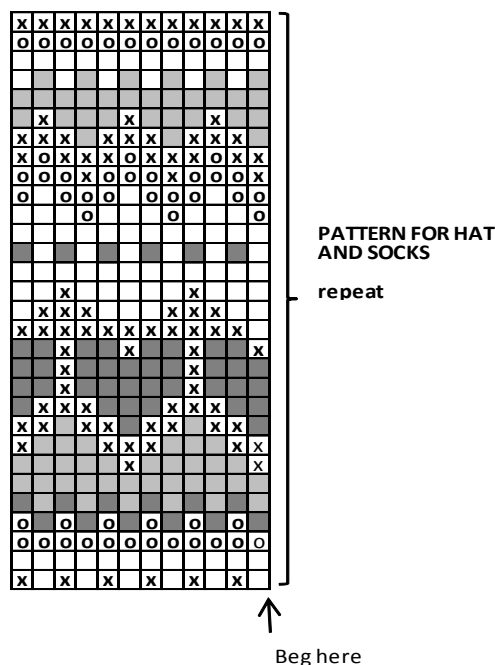
Yoke: Slip all sts on same circular needle, sleeves over the bound-off sts on sides = 198-226-246-268 sts. Place markers at each 4 seam lines, and beg raglan-dec. Rep dec every 2nd rnd, before marker: K2togtbl, after marker: K2tog. Cont working in St st with grey yarn, and rep dec altog. 3-5-7-9 times = 174-186-190-196 sts rem. Knit 1 rnd, adjusting evenly across the rnd the number of sts to be 174-186-186-192 sts. Cont working in patt and dec as charted = 87-93-93-96 sts. Knit 1 rnd with grey yarn, and dec evenly across the rnd the number of sts to be 72-76-80-86 sts. Purl 1 rnd = 1 grey rill 1. Next rnd: *K2tog, 1 yo*, rep *-* across the rnd. Knit 1 rnd, purl 1 rnd = 1 rill.

Neck band: Change to needles size 2½ mm. Break yarn, and beg mid back. Work back and forth approx. 3 cm (1.2 in) in K1,P1rib. Bind off in rib. Using grey yarn, work 1 row sc to each side of the split mid back. Make a buttonhole loop at the upper edge, and sew on the button.

Sew under arm seams. Weave in all ends on WS.

Using crochet hook size 3 mm and pink yarn, work 1 rnd sc around neck edge (check that edge will not be too tight). Next rnd: *Ch4, 1sl st to first ch-st, skip 1 st, insert hook to next st*, rep *-* across the rnd.

weave in on WS. Twist 2 cords, and fasten to each ear flap.



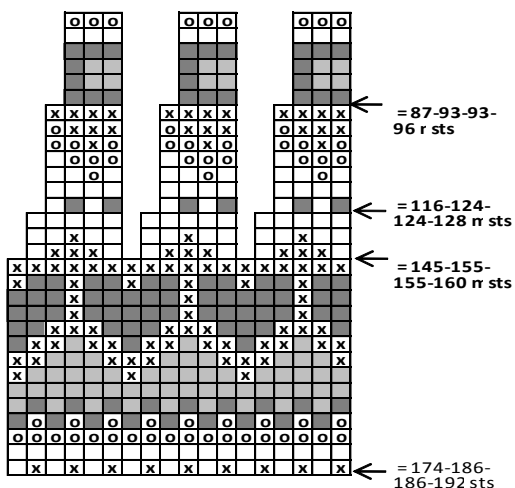
- = white
- ◻ = t green
- ◻ = light yellow
- ◻ = pink
- ◻ = grey

SOCKS

Using dpn size 2½ mm and grey yarn, cast on 30-36-42-42 sts. Work 4 rnds in K1,P1 rib. Change to needles size 3 mm. Cont working in rnds in St st and patt for socks as charted until work measures approx. 5-6-7-8 cm (2-2.4-2.8-3.1 in). Using grey yarn, work back and forth for heel over mid back 15-18-21-21 sts as foll: Knit until 1 st rem, turn, purl until 1 st rem, turn, and work each row 1st less each row until 7-8-9-9 mid sts rem. Turn, and work 1 st more each row. M1 between last mid st and next st, knit/purl these 2 sts tog to avoid holes in the work. When all sts have been returned back to work, cont working in rnds in St st and patt over all sts. When foot (incl heel) measures approx. 8-9-10-11 cm (3.1-3.5-4-4.3 in), or desired length, beg dec. Divide sts evenly on 4 dpn. Cont working in rnds, using pink yarn. Dec 1 st beg of each needle, rep dec every 2nd rnd altog. 4 times, and then every rnd until 10-8-10-10 sts rem. Break yarn, thread through rem sts, pull tightly, and weave in on WS. Weave in all ends on WS. Work same for the other sock.

PANTS

Beg with one leg. Using needles size 3 mm and pink yarn, cast on 44-48-48-52 sts. Work 3 cm (1.2 in) in St st. Purl 1 rnd (= folding edge) + 3 cm (1.2 in) in St st. Knit 1 rnd, adjusting evenly across the rnd the number of sts to be 58-62-64-66 sts. Place a marker beg of the rnd = inner seam of the leg. Inc 1 st both sides of the marker approx. every 2½-2-3-2½ cm (1-0.8-1.2-1 in) until you have altog. 70-80-80-90 sts on a rnd. When work measures approx. 18-23-28-33 cm (7.1-9.1-11-13 in) (or desired length), put work aside, and knit the other leg. Slip both legs on same circular needle, with inner seams facing each other = 140-160-160-180 sts on a rnd. Place markers mid front and back, and cont working in rnds. Dec 1 st both sides of the markers every 2nd rnd altog. 4-4-4-5 times = 124-144-144-160 sts on a rnd. When work measures approx. 16-18-22-25 cm (6.3-7.1-8.7-9.8 in), measured from crotch (or desired length), place markers each side, 62-72-



- = white
- ◻ = mint green
- ◻ = light yellow
- ◻ = pink
- ◻ = grey

Hat

Beg with one ear flap. Using needles size 3 mm and pink yarn, cast on 5 sts. Work in St st inside first and last 2 sts which are worked in Garter st. Cont working back and forth, and inc 1 st at each edge inside 2 sts every 2nd row until you have 20-22-24-26 sts on a row. Put work aside, and knit the other ear flap.

Slip both ear flaps on same circular needle, and cont working in rnds as foll: Knit sts over one ear flap, cast on 43-43-45-45 sts = mid front, knit sts over the other ear flap, cast on 19-21-21-23 sts = mid back = 102-108-114-120 sts. Work 2 rnds in St st with pink yarn. Cont working in patt as charted until work measures approx. 9-12-12-14 cm (3.5-4.7-4.7-5.5 in), measured mid front. Cont working in rnds in St st with basic clr last used in patt. Beg crown dec: *K4, K2tog*, rep *-* across the rnd. Work 2 rnds without dec. Rep dec with 1 st less between dec until 34-36-38-40 sts rem on a rnd. Next rnd: K all sts tog in pairs = 17-18-19-20 sts rem. Break yarn, thread through rem sts, pull tightly, and

72-80 sts for each side. Place a marker mid back, and work short rows to rise the back: Beg from mid back, K5, turn, P10, turn, work 5 sts more each side altog. 4-5-5-5 times. Knit 1 rnd over all sts. Work 3 cm (1.2 in) in St st. Next rnd: *K2tog, 1 yo*, rep *-* across the rnd. K 1 rnd over all sts (= folding edge) + 3 cm (1.2 in) in St st. Fold edge in double, and so on WS. Thread elastic on waist. Weave in all ends on WS.

BLANKET (50x70 cm) (19.7x27.6 in)

Using needles size 3 mm and grey yarn, cast on 126 sts. Work back and forth 5 cm (2 in) in Garter st. Cont working in St st and stripes as foll: *8 rows in pink, 8 rows in green, 8 rows in grey, 8 rows in yellow*, cont working back and forth, rep *-* until work measures approx. 65 cm (25.6 in) (ending with pink stripe). Work approx. 5 cm (2 in) in Garter st with grey yarn. Bind off. Using grey yarn, pick or knit up approx. 192 sts along one long side. Work approx. 5 cm (2 in) in Garter st. Bind off. Work same for the other long side.

Viking Baby Ull

1114-3

Diaper undies, sweater, hat and socks

Size: **BabyB/Prem** 1 3/6 9/12months 2 3/4 yrs

SWEATER:

Chest:	34	40	43	47	50	57 cm
	13.4	15.7	16.9	18.5	19.7	22.4 in
Length:	18	28	33	36	38	42 cm
	7.1	11	13	14.2	15	16.5 in
Sleeve length:	13	16	19	24	27	30 cm
	5.1	6.3	7.5	9.4	10.6	11.8 in

DIAPER UNDIES:

Hips:	35	44	46	48	50	53 cm
	13.8	17.3	18.1	18.9	19.7	20.9 in

ALTERNATIVE YARN: Viking Baby Ull (100% superwash merino wool), Viking pure milk fiber (100% milk fiber), 50 g ball

DIAPER UNDIES (triangle)

White, 300 1 1 1 1 2 2 balls

DIAPER UNDIES (with patt)

White, 300 1 1 1 1 1 1 ball
 Light Pink, 364 1 1 1 1 1 1 ball
 Pink, 361 1 1 1 1 1 1 ball
 Violet, 369 1 1 1 1 1 1 ball

DIAPER UNDIES (with motif)

Grey, 313 (Light Blue, 324) 1 1 1 1 2 2 balls
 Violet, 371 (Beige, 307) 1 ball for each size
 Heather, 368 (White, 300) 1 ball for each size

SWEATER

White, 300 1 2 2 3 3 3 balls

HAT

White, 300 approx. 1 ball for each size

Double pointed needles and circular needle size 2½ and 3 mm – US 1 or 2 and 2 or 3 – UK/Canadian 13 or 12 and 11
 + 1 button for sweater
 + elastic for diaper undies

Gauge: 28 sts = approx. 10 cm (4 in) over St st using needles size 3 mm. **Check your gauge to ensure success.**

SWEATER

Using needles size 3 mm and white yarn, cast on 48-56-60-66-70-80 sts. Work back and forth in Garter st until work measures approx. 10-19-22-25-26-27 cm in). Cast on at each edge 36-44-54-66-76-84 sts = 120-144-168-198-222-248 sts on a row (=

sleeves). Cont working back and forth in Garter st until work measures 16-26-30-33-35-37 cm (in). Bind off for neck edge 16-16-18-22-22-24 mid sts. Work each side separately. Bind off at neck edge every 2nd row 1x3, 1x2, and 1x1st = 46-58-69-82-94-106 sts rem. When work measures 18-29-33-37-39-42 cm (in) (= shoulder top), put work aside and work same for the other side. Slip all sts on same needle, and cast on 28-28-30-34-34-36 sts for mid back. Cont working over all sts in Garter st. When work measures 8-10-11-12-13-15 cm (in), measured from the cast-on sts, bind off at each edge 36-44-54-66-76-84sts (= sleeves). Cont working in Garter st over the rem 48-56-60-66-70-80 mid sts until work measures 10-19-22-25-26-27 cm (in), measured from the bound-off sleeve sts.

Sew side and sleeve seams.

Neck band: Beg mid back. Using needles size 3mm, pick up around neck edge approx. 74-78-80-84-88-92 sts. Work back and forth approx. 2-2-3-3-3-3 cm (in) in Garter st. Bind off rather loosely. Crochet a buttonhole loop with ch5, and fasten it with 1 sl st. Sew on the button. Weave in all ends on WS.

HAT

Size: **BabyB/Prem** 1/3 6 9/12 months 2 yrs ¾ yrs
 Circumference: 33 36 40 40 43
 46 cm

in

Using a short circular needle size 2½ mm, cast on 91-103-113-113-123-133 sts. Work 7 rnds in Garter st. Change to needles size 3 mm. Cont working in rnds in St st as foll: *K1, M1, K13-15-16-16-19-20, K3tog (= sl1, K2tog, pssso), K13-15-17-17-18-20, M1, K1, M1, K13-15-17-17-18-20, K3tog, K13-15-17-17-18-20, M1, K1, M1, K13-15-17-17-18-20, K3tog, K13-15-16-16-19-20, M1, K1*. Rep *-* every 2nd rnd 5-7-8-9-10-12 more times. Cont with dec only (= K3tog same as for patt). Rep dec every 2nd rnd until 7-7-11-11-9-7 sts rem. Break yarn, thread through rem sts, and weave in on WS. Weave in all ends on WS. Twist 2 cords, and sew on each side (or use silk ribbons).

DIAPER UNDIES (triangle)

Using a short circular needle size 2½ mm, cast on 92-116-120-128-132-140 sts. Work in rnds in K2,P2 rib. When work measures approx. 4-6-7-8-8-8 cm (1.6-2.4-2.8-3.1-3.1-3.1 in). Eyelet rnd: *K2tog, 1 yo*, rep *-* across the rnd. Cont working in rib same as before, until rib measures approx. 8-12-14-16-16-16 cm (3.1-4.7-5.5-6.3-6.3-6.3 in). Divide work between 2 knit-sts/2 purl-sts mid front. Cont working back and forth in Garter st. Dec 1 st at each edge inside 2sts (beg of row: K2tog; end of row: K2togtbl). Rep dec until 4 sts rem. Bind off. Sew the bound-off edge to mid front rib. Sew also seams for leg openings, leaving approx. 8-10-11-12-14-16 cm (3.1-4-4.3-4.7-5.5-6.3 in) opening. Twist a cord, and thread through eyelet rnd (or use a silk ribbon).

DIAPER UNDIES (patt)

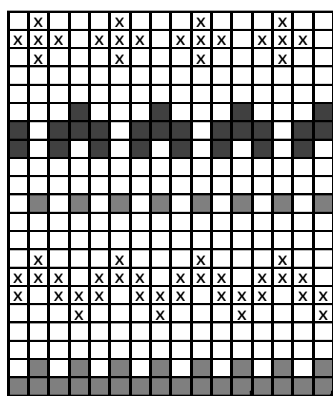
Using a short circular needle size 2½ mm and white yarn, cast on 92-116-120-128-132-140 sts. Work in rnds 6 cm (2.4 in) in K1,P1 rib. When rib measures 3 cm (1.2 in), work eyelet rnd (= foding edge): *K2tog, 1 yo*, rep *-* across the rnd. Change to needles size 3 mm. Knit 1 rnd, and inc evenly across the rnd 8-8-8-8-8 sts = 100-124 (128) 136 (140) 148 sts on a rnd. Place markers both sides, 50-62-64-68-70-74 sts for each side, and place a marker mid back (= 25-31-32-34-35-37 sts for oth sides). Work short rows to rise the back: Beg from mid back, K5, turn, P10 sts. Cont working in the same way, 5 sts more each row with altog. 10-12-12-12-12-12 turnings (= 5-6-6-6-6-6 times each side). Cont working over all sts in St st and patt as charted. When patt is ready, cont working in St st with pink yarn until work measures 8-12-14-16-16-17 cm (3.1-4.7-5.5-6.3-6.3-6.7 in) –

measured mid front. Place a new marker – all measures from now on are taken from here. Beg next row from sidemarker before front piece: K11-11-11-11-11-11, bind off 6 sts, K16-28-30-34-36-40 sts (= mid part, mid front), bind off 6 sts. Slip rem 72-84-86-90-92-96 sts (= sts for back + 11 sts each side) on a holder. Work back and forth in St st over mid front sts, and bind off at each edge every 2nd row 1-3-3-3-3x2, 4-5-5-5-5x1 st = 4-6-8-12-14-18 sts rem. When mid part measures 4-5-5-5-5 cm (1.6-2-2-2-2 in), slip sts on holder.

Slip back piece sts on needles, and bind off at each edge same as for front = 60-62-64-68-70-74 sts. When back measures 5-6-6-6-6 cm (1.6-2-2-2-2 in), bind off at each edge every 2nd row 4-5-5-5-5x1, 3-3-3-3-3x2, 1x6, 3x2, 5x1 st = 4-6-8-12-14-18 sts. When work measures 10-13-13-14-15-15 cm (4-5.1-5.1-5.5-5.9-5.9 in), slip sts on holder.

Finishing: Join crotch seam. Fold upper edge rib in double, and sew on WS, thread elastic to the waist.

Edges: Using dpn size 2½ mm, knit up 52-56-60-64-68-76 sts across the leg opening. Work 2cm (0.8 in) in K2,P2 rib. Bind off rather loosely. Work same for the other leg opening. Weave in all ends on WS.



- = white
- = light pink
- ⊗ = violet
- = pink

DIAPER UNDIES (heart or teddy motif)

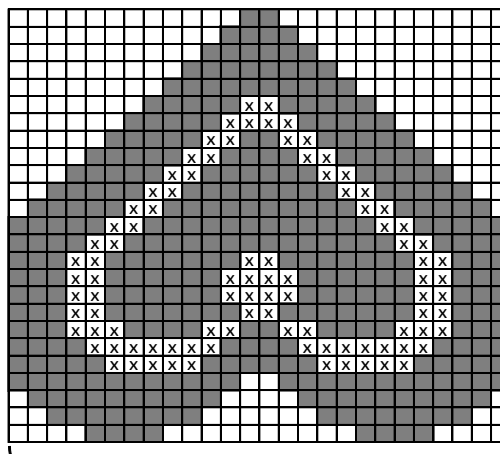
Using a short circular needle size 2½ mm and grey (light pink) yarn, cast on 92-116-120-128-132-140 sts. Work in rnds 7 cm (in) in K1,P1 rib. When work measures 2 cm (0.8 in), work 4 rnds in violet (beige) clr yarn, 4 rnds in grey (light blue), and 4 rnds in heather (white). Cont working with grey (light blue) yarn. When work measures approx. 5 cm (2 in), work an eyelet rnd: *K2tog, 1 yo*, rep *-.* across the rnd. When work measures 7 cm (2.8 in), change to circular needle size 3mm. Knit 1 rnd, inc evenly across the rnd 8-8-8-8-8 sts = 100-124 -128-136 -140-148 sts on a rnd. Place markers each side, 50-62-64-68-70-74 sts for back and front, and place a marker mid back (= 25-31-32-34-35-37 sts on each side). Work short rows to rise the back: Beg from mid back, K5, turn, P10. Cont working in the same way, working 5 sts more each row until you have turned altog 10-12-12-12-12 times (= 5-6-6-6-6 turnings each side). Cont working in rnds in St st over all sts until work measures 8-12-14-16-16-17 cm (3.1-4.7-5.5-6.3-6.3-6.7 in) – measured mid front. Place a new marker, all measures from now on taken from here. Beg next row from the sidemarker before front: K11-11-11-11-11-11, bind off 6 sts, K16-28-30-34-36-40 sts (= mid part, mid front), bind off 6 sts. Slip rem 72-84-86-90-92-96 sts (= sts for back+ 11 sts each side) on a holder. Work back and forth in St st over mid front sts, and bind off at each edge every 2nd row: 1-3-3-3-3x2, 4-5-5-5-5x1 st = 4-6-8-12-14-18 sts rem. When mid part measures 4-5-5-5-5 cm (1.6-2-2-2-2 in), slip sts on holder. Slip back piece sts on needles, and bind off at each edge same as for front = 60-62-64-68-70-74 sts. when work measures 5-6-6-6-6 cm (2-2.4-2.4-2.4-2.4 in), bind off at each edge every 2nd row 4-5-5-5-5x1, 3-3-3-3-3x2, 1x6, 3x2, 5x1 st =

4-6-8-12-14-18 sts rem. When back measures 10-13-13-14-15-15 cm (4-5.1-5.1-5.5-5.9-5.9 in), slip sts on holder.

Finishing: Join crotch seam. Twist a cord, and thread it to the eyelet rnd.

Edges: Using dpn size 2½ mm and grey (light blue) yarn, knit up 52-56-60-64-68-76 sts across the leg opening. Work in rnds 2 cm (0.8 in) in K2,P2 rib. Bind off rather loosely. Work same for the other leg opening. Embroider heart or teddy motif mid back. Place side markers each side, and check from where to beg the motif. Upper edge of the motif is below the short rows (or approx. 3 cm (1.2 in) below the rib). Weave in all ends on WS.

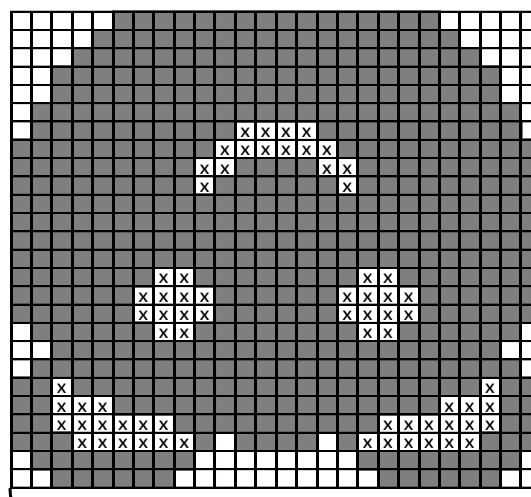
MOTIF, worked in Duplicate sts



= motif placed mid back over 26 sts

- = grey
- = violet
- ⊗ = heather

MOTIF, worked in Duplicate sts



= motif placed mid back over 26 sts

- = light blue
- = beige
- ⊗ = white

Viking Baby Ull

1114-4

Dress, cardigan, hat and socks

Size: 3/6 9/12 18 24 months

CARDIGAN

Chest: approx.	52	58	64	69	cm
	20.5	22.8	25.2	27.2	in
Length: approx.	26	28	30	32	cm
	10.1	11	11.8	12.6	in
Sleeve length: approx.	13	15	17	19	cm
	5.1	5.9	6.7	7.5	in

DRESS

Chest: approx.	46	50	53	57	cm
	18.1	19.7	20.9	22.4	in
Length: approx.	37	43	48	52	cm
	14.6	16.9	18.9	20.5	in

ALTERNATIVE YARN: Viking Baby Ull (100% merino wool, superwash), Viking Milk fiber (100% milk fiber), 50 g ball

CARDIGAN, HAT AND SOCKS

Pink, 364	3	3	4	4	balls
White, 300	1	1	1	1	ball

DRESS

Pink, 364	3	3	4	4	balls
White, 300	1	1	1	1	ball

Double pointed needles and circular needle size 2½ and 3 mm – US 1 or 2 and 3 – UK/Canadian 13 or 12 and 11
+ Crochet hook size 2½ mm – US B/1 or C/2 – UK/Canadian 13 or 12

+ 4 buttons for cardigan

+ 4 small pink buttons for dress

Gauge: 28 sts = approx. 10 cm (4 in) over St st using needles size 3 mm. **Check your gauge to ensure success.**

DRESS

Beg from lower edge. Using needles size 3 mm and pink yarn, cast on 216-232-248-264 sts. Work back and forth 2 cm (0.8 in) in Garter st. Cont working in rnds in patt I as charted until work measures 27-32-36-40 cm (10.6-12.6-14.2-15.7 in). Cont working in rnds in Garter st, **but** dec evenly across first rnd the number of sts to be 128-140-148-160 sts. Work 8 rnds in Garter st. Place markers each side, 63-69-73-79 sts for front, and 65-71-75-81 sts for back. Bind off 12 sts each side (= 6 sts both sides of the markers). Finish back and front separately.

Back

Bind off mid st. Work each side separately. Cont working in St st and patt II as charted. Bind off at each edge ever 2nd row 1x3, 1x2, and 1x1 st (same for all sizes). Cont working in St st with white yarn until work measures 37-43-48-52 cm (14.6-16.5-18.9-20.5 in), armhole measures approx. 9-10-11-11 cm (3.5-4-4.3-4.3 in). Bind off rather loosely. Work same for the other side, rev all shaping.

Front

Work and shape for armhole same as back. When work measures 4 cm (1.6 in) less than the given length, bind off 13-15-15-17 mid sts. Work each side separately. Bind off at neck edge every 2nd row 1x3, 2x2, and 1x1 st. When work measures same as back, bind off. Work same for the other side, rev all shaping.

Finishing

Sew shoulder seams.

Neck edge

Beg mid back. Using needles size 2½ mm and white yarn, knit or pick up approx. 80-84-88-92 sts. Work back and forth 2 cm (0.8

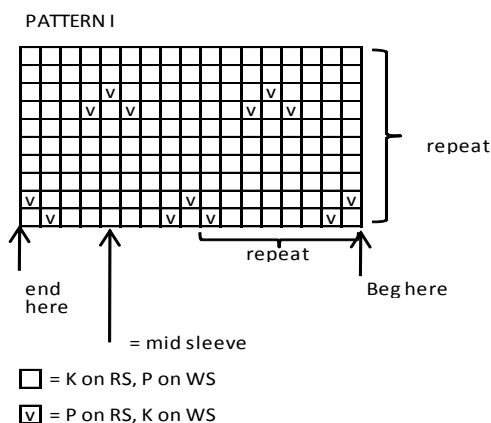
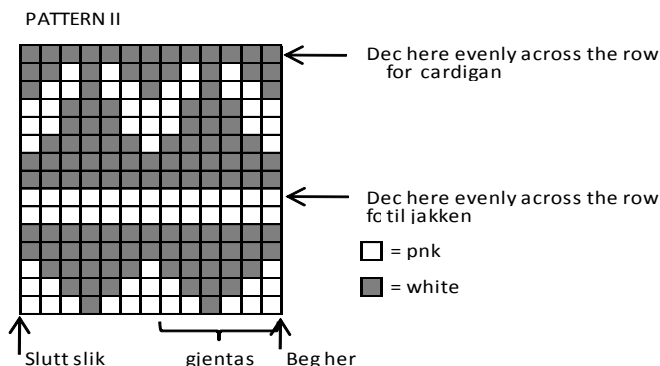
in) in Garter st. Bind off rather loosely.

Split: Using needles size 2½ mm and white yarn, knit up approx. 26-28-30-34 sts. Work 2 rows in Garter st. Bind off on WS row rather loosely. Work same for the other side, but make 4 buttonholes on first row. Buttonhole: Bind off 2 sts. Next row: Cast on 2 new sts over the bound-off sts.

Armhole bands

Beg mid under arm. Using needles size 2½ mm and white yarn, knit up approx. 56-60-66-68 sts. Work back and forth 2 cm (0.8 in) in Garter st. Bind off rather loosely. Work same for the other armhole. Sew armhole band seams, and hem edge seam.

Weave in all ends on WS. Sew on buttons.



CARDIGAN

Using needles size 3 mm and pink yarn, cast on 163-179-195-211 sts. Work back and forth 5 rows in Garter st. Beg from RS, 5 sts in Garter st, patt I as charted over 153-169-185-201 sts (end as charted), 5 sts in Garter st. Place markers each side, 77-85-93-101 sts for back, and 43-47-51-55 sts for both fronts (incl 5 sts for front edges). Cont working back and forth until work measures 15-16-17-19 cm (5.9-6.3-6.7-7.5 in). Bind off 8 sts each side (4 sts both sides of the markers). Finish back and fronts separately.

Back

Cont working back and forth in patt. Bind off 1 st at each edge every 4th row 4 times. Slip sts on holder.

Right front

Work and bind off same as for back, but make 1 buttonhole on first row inside 2 Garter sts. Buttonhole: Bind off 2 sts. Next row: Cast on 2 new sts over the bound-off sts (there will be 3 more buttonholes approx. 3 cm (1.2 in) spaced apart). When work measures same as back, slip sts on holder. Work same for left front, but without buttonholes.

Put work aside and knit the sleeves.

Sleeves

Using dpn size 2½ mm and white yarn, cast on 40-42-44-46 sts. Work in rnds 3 cm (1.2 in) in K1,P1 rib. Change to needles size 3 mm. Knit 1 rnd, adjusting evenly across the rnd the number of sts to be 47-49-51-53 sts. Place a marker mid under arm. Cont

working in St st. Work 6 rnds with white yarn, 2 rnds in pink, 6 rnds in white, **but** inc 1 st both sides of the marker approx. every 3-3-2½-2½ cm (1.2-1.2-1-1 in) until you have 53-57-61-65 sts on a rnd. Cont working in rnds in pink yarn and patt I as charted (check from mid st where to beg patt). When work measures the given length (or desired length), bind off 8 sts mid under arm (4 sts both sides of the marker). Cont working back and forth, and dec 1st at each edge every 4th row 4 times. Slip sts on holder, and work same for the other sleeve.

Slip all sts on same circular needle (= 205-229-253-277 sts). Beg from right front, then one sleeve, back, another sleeve, and then left front. Dec evenly across next row the number of sts to be 191-197-209-221 sts (not over front edge sts). Work 2 rows in St st over all sts in pink yarn (front edges are worked in Garter st). Cont working in patt II as charted (inside front edge sts). Beg and end as charted. Twist yarns at each edge to avoid holes in the work. Dec 30-30-36-36 sts evenly across the row (see chart = 2 dec rows) = 131-137-137-149 sts rem on a row. Work 7-9-9-11 rows in St st with white yarn without dec. Dec 22-24-24-28 sts evenly across the row. Work 7-9-9-11 rows in St st, and dec 22-24-24-28 sts evenly across the row = 87-89-89-93 sts rem. Change to needles size 2½ mm. Cont working in Garter st with white yarn (= neck band), **but** adjust evenly across first row the number of sts to be 70-74-80-84 sts. Work 7 rows in Garter st. Bind off rather loosely on WS row. Sew under arm seams, and weave in all ends on WS. Sew on buttons.

HAT

Using needles size 2½ mm and pink yarn, cast on 73-85-97-109 sts. Work back and forth 6-6-7-7 cm (2.4-2.4-2.8-2.8 in) in K1,P1 rib. Change to needles size 3 mm. Work in patt II as charted. Cont working in St st with white yarn until work measures 15-16-17-18 cm (5.9-6.3-6.7-7.1 in). Bind off 23-27-31-35 sts at each edge, and cont working in St st over 27-31-35-39 mid sts until work measures approx. 8-10-11-12 cm (3.1-4-4.3-4.7 in), **but** dec 1 st at each edge every 4th row altog. 5 times. Bind off rather loosely.

Fold ribbed edge in double on RS, and fasten on each side. Sew side seams. Using needles size 2½ mm and pink yarn, knit up approx. 71-75-79-83 sts along the lower. Work 4 rows in Garter st. Next row: *K2tog, 1 yo*, rep *-* across the row (= eyelet row for threading the cord), + 4 rows in Garter st. Bind off rather loosely. Using pink yarn, twist a cord (approx. 50 cm (19.7 in) long), and thread into the eyelet row. Weave in all ends on WS.

SOCKS

Using a pair of knitting needles size 2½ mm and pink yarn, cast on 37-43-43-49 sts. Work 8 rows in Garter st. Change to needles size 3 mm. Cont working back and forth in patt II as charted. Work patt II 1 time (beg and end as charted). Work 2 rows in St st. Next row: *K2tog, 1 yo*, rep *-* across the row (= eyelet row for threading the cord) + 2 rows in St st, **but** dec evenly across last row the number of sts to be 37-39-41-43 sts. Cont working in St st with white yarn over 9-9-11-11 mid sts until mid part measures 5-6-6-7 cm (2-2.4-2.4-2.8 in) (or desired length). Slip sts on holder. Divide sts on 3 knitting needles. Pick or knit up approx. 12-13-15-18 sts along each edge of the mid part = 61-65-71-79 sts altog. Using pink yarn, work 10-12-14-14 rows in Garter st. Beg dec: K24-26-29-33, K2tog, K9, K2tog, K24-26-29-33. WS: Knit all sts. Next row (RS): Rep dec with 7 sts between dec mid front. Cont working in the same way, rep dec every 2nd row with 2 sts less mid front each time, until 3 mid sts rem. Knit these 3 sts tog = 1 st rem. Bind off rather loosely. Sew sole seam, and mid back seam. Weave in all ends on WS. Using pink yarn, twist a cord (approx. 40 cm (15.7 in) long), and thread through the eyelet row. Work same for the other sock.

Viking Baby Ull 1114-5

Dress, overall, hat and socks

Size: BabyB/Prem 1 3/6 months 1 2 3/4 yrs

DRESS

Chest:	30	36	46	50	57	64	cm
	11.8	14.2	18.1	19.7	22.4	25.2	in
Length:	27	35	41	46	50	55	cm
	10.6	13.8	16.1	18.1	19.7	21.7	in
Sleeve length:	12	16	18	22	27	30	cm
	4.7	6.3	7.1	8.7	10.6	11.8	in

OVERALL

Size: BabyB/Prem 1 3/6 months 1 2 3/4 yrs
Chest: 37 48 52 60 64 70 cm
14.6 18.9 20.5 23.6 25.2 27.6 in

Length: 35 42 50 64 70 82 cm
13.8 16.5 19.7 25.2 27.6 32.3 in
Sleeve length: 12 16 18 22 27 30 cm
4.7 6.3 7.1 8.7 10.6 11.8 in
Leg length: 10 14 17 20 28 35 cm
4 5.5 6.7 7.9 11 13.8 in

ALTERNATIVE YARN: Viking Baby Ull (100% merino wool, superwash), Viking pure milk fiber (100% milk fiber), 50 g ball

DRESS

Grey, 315	1	1	1	1	1	1 ball
White, 300	2	3	4	4	5	5 balls
Pink, 364	1	1	1	1	1	1 ball

OVERALL

Grey, 315	1	1	1	1	2	2 balls
White, 300	1	2	3	3	4	5 balls

+ pink rest yarn for embroidering the bunny on left front

HAT AND SOCKS

Grey, 315	1 ball for all sizes
White, 300	1 ball for all sizes

Double pointed needles and circular needle size 2 ½ and 3 mm – US 1 or 2 and 2 or 3 - UK/Canadian 13 or 12 and 11

+ 2-2-3-3-3-3 buttons for dress

+ 4-4-5-5-5-5 buttons for overall

Gauge: 28 sts = approx. 10 cm (4 in) over St st using needles size 3 mm. **Check your gauge to ensure success.**

DRESS

Using needles size 3 mm and white yarn, cast on 168-182-224-252-280-322 sts. Work in rnds 3 cm (1.2 in) in St st. Change to pink yarn, knit 1 rnd. Next rnd: *K2tog, 1 yo*, rep *-* across the rnd (= folding edge). Change to white yarn, and work in rnds in St st until work measures approx. 3-4-5-5-6-6 cm (1.2-1.6-2-2-2.4-2.4 in), measured from folding edge. Work patt I as charted. When patt I is ready, cont working and rep patt II altog 1-1-1½-1½-1½-1½

stripe reports in height (end as charted). There is now 3-3-6-6-6-6 grey stripes. Cont working in rnds in St st with white yarn until work measures approx. 17-22-27-31-33-36 cm (6.7-8.7-10.6-12.2-13-14.2 in). Next rnd: Dec evenly across the rnd the number of sts to be 84-100-130-140-160-180 sts. Work in rnds 2-3-3-3-4-4 cm (0.8-1.2-1.2-1.2-1.6-1.6 in) in St st. Place markers each side, 42-50-65-70-80-90 sts for both back and front. Bind off 10 sts each side (5 sts both sides of the markers). Finish each side separately.

Front

Cont working back and forth in St st. Bind off at each edge every 2nd row 1x3, 1x2, and 1x1 sts. When work measures approx. 5-7-

8-9-10-11 cm (2-2.8-3.1-3.5-4-4.3 in), measured from armhole, bind off 8-10-11-12-14-16 mid sts. Finish each side separately. Bind off at neck edge every 2nd row 1x3, 1x2, and 1x1 st. When work measures approx. 8-10-11-12-13-15 cm (3.1-4-4.3-4.7-5.1-5.9 in), measured from armhole, bind off. Work same for the other side, rev all shaping.

Back

Work same as for back. When work measures approx. 3-3-3-4-4-4 cm (1.2-1.2-1.6-1.6-1.6 in), bind off 2-2-1-2-2-2 mid sts. Finish each side separately. When work measures same as front, bind off. Work same for the other side.

Sleeves

Using needles size 3 mm and white yarn, cast on 30-32-34-36-38-40 sts. Work folding edge same as for body. Cont working in white yarn. Knit 1 rnd, and inc evenly across the rnd the number of sts to be 34-40-46-50-54-60 sts. Cont working in rnds in St st. Place a marker mid under arm. Inc 1 st both sides of the marker approx. every 1½-2½-2½-2½-2-2 cm (0.6-1-1-1-0.8-0.8 in) until you have 44-50-58-64-74-86 sts on a rnd, but when work measures approx. 3-4-5-5-6-6 cm (1.2-1.6-2-2-2.4-2.4 in), measured from folding edge, work stripe patt (only 1 time) as charted (= 3 grey stripes). Cont working with white yarn until work measures given length, or as desired. Bind off 10 sts mid under arm (5 sts both sides of the marker). Cont working back and forth. Bind off at each edge every 2nd row 1x3, 1x2, and 1x1 st. Bind off rem sts. Fold lower edge in double, and sew on WS. Work same for the other sleeve.

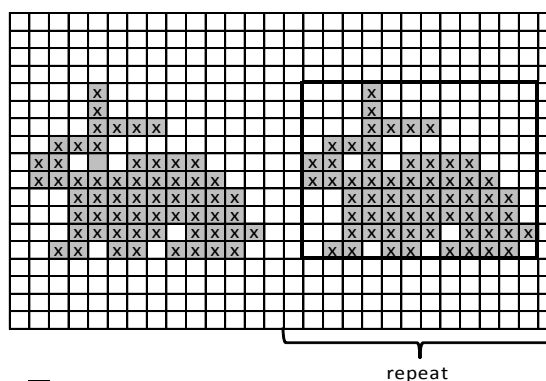
Finishing: Join shoulder seams.

Neck band: Beg mid back from split. Using needles size 3 mm and white yarn, pick or knit up from RS approx. 59-67-73-79-87-91 sts. Work back and forth 2 cm (0.8 in) in St st. Change to pink yarn, RS row: *K2tog, 1 yo*, rep *-* across the row. Purl 1 row. Change to white yarn, and work 2 cm (0.8 in) in St st. Bind off. Fold neck band in double, and sew on WS.

Bands mid back: Using white yarn, crochet 1 row sc to each side of the split. Make 2-2-3-3-3-3 buttonhole loops: fasten yarn with 1 sl st, ch4, skip 2 sts, 1 sl st to next st, sl sts until next buttonhole loop. Make altog. 2-2-3-3-3-3 buttonhole loops on RH side: 1 mid neck band, and rest evenly spaced apart (approx. 3 cm (1.2 in)). Sew on buttons.

Sew on sleeves. Weave in all ends on WS. Fold lower edge in double, and sew on WS.

PATTERN



□ = white
 ⊗ = pink

repeat

OVERALL

Beg from lower edge of one leg: Using dpn size 3 mm and grey yarn, cast on 36-40-44-48-52-52 sts. Work 6 rnds in St st. Cont working in Stripe patt. Knit 1 rnd, adjusting evenly across the rnd the number of sts to be 54-65-71-77-82-89 sts. Cont working in St st and stripe patt (beg with 4 rnds in white, and 2 grey stripes before rep patt). Note! **BabyBorn:** rep stripe patt as charted. Place a marker beg of rnd = inner seam. Inc 1 st each side of the marker approx. every 2 cm (0.6 in) (same for all sizes) until you have approx. 64-79-85-101-106-115 sts on a rnd. When leg measures approx. 10-14-17-20-28-35 cm (4-5.5-6.7-7.9-11-13.8 in) (or desired length), put work aside and knit the other leg.

Slip legs on same circular needle = 128-158-170-202-212-230 sts on a rnd. Place markers mid front and back. Cont working in rnds in St st. Dec 1 st both sides of each marker (before marker: K2togtbl; after marker: K2tog. Rep dec every rnd 6-6-6-8-8-8 times (= 104-134-146-170-180-198 sts). When work measures 3-3-4-5-5-5 cm (1.2-1.2-1.6-2-2-2 in) (measured from last dec for crotch), bind off 6 mid front sts = 98-128-140-164-174-192 sts. Cont working back and forth in St st and stripes. Place markers each side, 50-66-72-84-92-100 sts for back, and 24-31-34-40-41-46 sts for front. When work measures approx. 27-33-40-52-57-68 cm (10.6-13-15.7-20.5-22.4-26.8 in) (measured from cast-on edge, divide work at side markers. Finish back and fronts separately.

Back: Cont working back and forth in St st with stripes. When armhole measures approx. 8-9-10-12-13-14 cm (3.1-3.5-4-4.7-5.1-5.5 in), bind off.

Right front: Work same as for back. When armhole measures approx. 6-6-7-9-10-10 cm (2.4-2.4-2.8-3.5-4-4 in), bind off for neck edge every 2nd row 1x8-10-12-14-16-18, 1x3, 1x2, and 1x1 st. When work measures same as back, bind off.

Work same for the left front, rev all shaping.

Sleeves

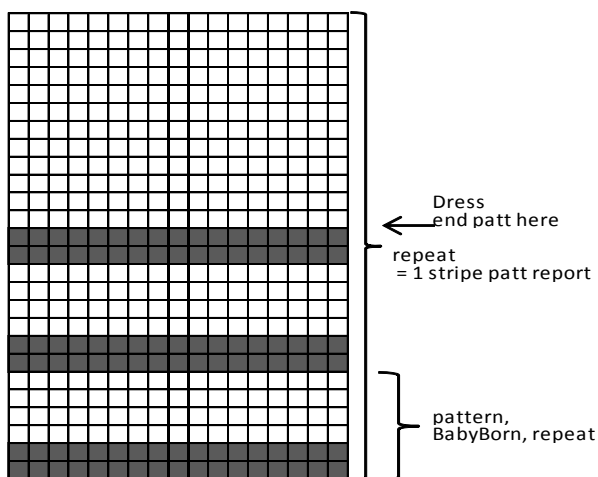
Using dpn size 3 mm and grey yarn, cast on 30-32-36-38-40-42 sts. Work edge same as for legs. Cont working in St st and stripes. Inc evenly across first rnd the number of sts to be 34-40-46-50-54-60 sts. Place a marker mid under arm. Inc 1 st both sides of the marker approx. every 2-3-3½-2-3-3 cm (0.8-1.2-1.4-0.8-1.2-1.2 in), until you have 44-50-56-68-72-78 sts on a rnd. When sleeve measures approx. 12-16-18-22-27-30 cm (4.7-6.3-7.1-8.7-10.6-11.8 in), bind off. Work same for the other sleeve.

Finishing:

Sew shoulder seams.

Right front band: Using needles size 3 mm and white yarn, pick or knit up approx. 56-64-76-104-120-148 sts along front edge. Work back and forth 2 cm (0.8 in) in K1,P1 rib. Bind off in rib. Place marker for altog. 4-4-5-5-5-5 buttons, 1 approx. 1 cm (0.4 in) from neck edge, 1 approx. 3-3-3-4-4-4 cm (1.2-1.2-1.2-

PATTERN II



□ = white
 ■ = grey

1.6-1.6-1.6 in) from the lower edge of the split, and rest evenly spaced apart.

Work same for left front band, but with buttonholes. Buttonhole: Bind off 2 sts. Next row: Cast on 2 new sts over the bound-off ones.

Place front bands on top of each other, and sew the ends to the bottom of the split.

Neck band: Using a short circular needle size 3 mm and white yarn, pick or knit up approx. 63-67-73-85-91-95 sts (also over front edge bands). Work back and forth 2 cm (0.8 in) in K1,P1 rib. Bind off.

Sew on sleeves. Weave in all ends on WS. Sew on buttons.

Embroider a pink bunny on left front (approx 5-6-8-8-8-9 cm (2-2.4-3.1-3.1-3.1-3.5 in) below shoulder, and approx. 2-2-3-3-3-3 cm (0.8-0.8-1.2-1.2-1.2in) from front edge), see photo.

HAT

Size:	BabyB/Prem	1	3/6months	1	2	3/4 yrs
Circumference:	33	34	36	39	41	44 cm
	13	13.4	14.2	15.4	16.1	17.3 in

Beg with one ear flap. Using grey yarn, cast on 5 sts. Cont working back and forth in St st inside first and last 2 sts, which are worked in Garter st, Inc 1 st at each edge inside 2 sts. Rep inc every 2nd row until you have 19-19-21-23-25-27 sts on a row. Put work aside, and knit same for the other ear flap. Slip both ear flaps on same circular needle, and cont working in rnds: Work over sts of one ear flap, cast on 39-41-41-43-45-47 sts = mid front, work over sts of another ear flap, cast on 15-17-17-19-21-23 sts = mid back = 92-96-100-108-116-124 sts on a rnd. Work 2 rnds in grey (= first stripe in patt), but work cast-on sts mid front and back in K1,P1 rib. Cont working in St st and stripe patt over all sts (beg stripe patt with 4 rnds in white). When work measures approx. 9-10-11-12-13-14 cm (3.5-4-4.3-4.7-5.1-5.5 in), measured mid front. Knit 1 rnd, adjusting evenly across the rnd the number of sts to be 88-96-96-104-112-120 sts. Beg crown dec: *K6, K2tog*, rep *-* across the rnd. Knit 1 rnd without dec. Rep dec every 2nd rnd with 1 st less between dec until 22-24-24-24-26-26 sts rem. Next rnd: Knit all sts tog in pairs until 11-12-12-12-13-13 sts rem.

Break yarn, thread through rem sts, pull tightly, and weave in on WS.

Twist 2 cords, and fasten to ear flaps.

SOCKS

Size:	BabyB/Prem	1	3/6 months	1	2	3/4 yrs
-------	------------	---	------------	---	---	---------

Using dpn size 2½ mm and grey yarn, cast on 30-34-38-42-44-46 sts. Work in rnds 5-5-6-7-8-8 cm (2-2-2.4-2.8-3.1-3.1 in) in K1,P1 rib. Change to dpn size 3 mm. Work in St st over heel sts = 15-17-19-21-22-23 mid back sts: Knit until 1 st rem, turn, purl until 1 st rem, turn, work each row 1 st less until 3-5-5-5-6-7 sts rem in mid. Turn, and work 1 st more each row. M1 between last mid st and next st, and ktog with next st to avoid holes in the work. When all sts are returned back to work, cont working in St st over over all sts. When foot measures 5-6-7-9-10-11 cm (2-2.4-2.8-3.5-4-4.3 in) (or desired length), dec 1 st beg of each needle. Rep dec every 2nd rnd altog. 4 times, and then every rnd until 10-10-10-10-8-10 sts rem. Break yarn, thread through rem sts, and weave in on WS.

Weave in all ends on WS. Work same for the other sock.

Viking Baby Ull 1114-6 and 7

Sleepingbag, hat, scarf, mittens, bottle warmer and blanket

Size	1	3/6	9/12	months
Chest, approx.	38	46	50	cm
	15	18.1	19.7	in
Length, approx.	48	56	68	cm
	18.9	22	26.8	in
Sleeve length, approx.	13	15	17	cm
	5.1	5.9	6.7	in
Sleeve width, approx.	10	12	14	cm
	4	4.7	5.5	in
Neck, approx.	11	13	15	cm
	4.3	5.1	5.9	in
Circumference, approx.	31	34	37	cm
	12.2	13.4	14.6	in
Blanket, approx.				44 x 70 cm
				17.3x27.6 in

YARN ALTERNATIVE: Viking Baby ull (100% merino wool, superwash), Viking Pure Milk Fiber (100% milk fiber), 50 g ball

Sleepingbag

Beige, 307 3 4 5 balls
Pink, 364/Blue, 322 1 1 1 ball

Hat/mittens/scarf/bottlewarmer

Beige, 307 1 2 2 balls
Pink, 364/Blue, 322 1 1 1 ball

Blanket

Beige, 307 3 balls
Pink, 364/Blue, 322 2 balls

Bunny

Off-white, 302 1 ball

Double pointed needles and circular needle size 2 ½ and 3 mm – US 1 or 2 and 2or 3 - UK/Canadian 13 or 12 and 11
Crochet hook size 2 mm – US B/1 -UK/Canadian 14
+ 10 buttons

Gauge: 28 sts = approx. 10 cm (4 in) over St st using needles size 3 mm. **Check your gauge to ensure success.**

Abbreviations:

ch = chain stitch, sl st = slip stitch, sc = single crochet, dc = double crochet, tr = treble

CROCHET HEART

Ch11

1st row: 1 dc to 8th ch-st, ch2, 1 dc to 1st ch-st.

2nd row: Ch5, 1 dc to prev row's dc, ch2, 1 dc to prev row's 3rd ch-st.

Grid with 4 squares is now formed.

3rd row: 3 sc to 1st square, ch3, 3 sc-ch1 (= corner)- 3 sc to next square, ch3, 3 sc to next square.

4th row: 9 tr into ch-space, 1 sc to corner, 9 tr to ch-space, 1 sl st to 3rd sc of prev row, 3 sc to next square, 3 sc-ch1- 3 sc to next square, 3 sc to last square, end with 1 sl st to prev row's last st. Break yarn, and weave in ends on WS.

BUNNY

Body and head: Using needles size 2½ mm and white yarn, cast on 11 sts. Purl 1 row, and knit 1 row. Work back and forth in St st altog 18 rows. Break yarn, leaving approx. 35 cm (13.8 in) tail,

thread through sts, and pull tightly. Use tail for sewing the sides, approx. 1/3 of the lower edge. Fill in with cotton (= head). Twine yarn around head few times to form a neck, and finish sewing the side seams (= body). Fill in the body, and close the seam (= beg of work).

Ears: Using needles size 2½ mm and white yarn, cast on 5 sts.

Work as foll: K1, P1, K1, P1, K1, rep 5 times more = 6 rows.

7th row: K1, P3tog, K1

8th row: K1, P1, K1

9th row: K1, K2tog, psso.

Break yarn, and weave in on WS.

Work same for the other ear.

Legs (4 pcs): Using needles size 2½ mm and white yarn, cast on 4 sts. Work back and forth in St st, 6 rows for front legs, and 8 rows for hinder legs. Break yarn (approx. 35 cm (13.8 in)), and thread through the sts. Sew side seams.

Sew front and hinder legs to the body.

Embroider 2 black eyes (3-double knot st), and a small pink nose (4 satin sts)

SLEEPING BAG

Using needles size 3 mm and beige yarn, cast on 160- 188-216 sts. Work approx. 2 cm (0.8 in) in rnds in St st. Place markers each side, 80-94-108 sts for both front and back. Cont working in patt as foll: Front: K13-15-17, patt as charted, K20-30-40, patt as charted, K13-15-17, knit rem sts (= work back in St st). When work measures approx. 38-46-54 cm (15-18.1-21.3 in) (end with 1 patt report = heart), knit 1 rnd, adjusting evenly across the rnd number

of sts to be 106-130-142 sts. Place markers each side, 53-65-71 sts for both back and front. Bind off 8 sts each side (= 4 sts both sides of the markers). Finish back and front separately.

Back

Cont working back and forth in St st. When armhole measures 9-11-13 cm (3.5-4.3-5.1 in), slip 25-31-33 sts on holder.

Change to needles size 2½ mm and pink/blue yarn. Work 2 cm (0.8 in) in K1,P1 rib for each shoulder. Bind off.

Front

Cont working back and forth in St st. Make 3 buttonholes at each side approx. every 3-3½-4 cm (1.2-1.4-1.6 in). Make first buttonhole on 3rd-3rd-5th row: K2, bind off 2 sts (next row: cast on 2 new sts over the bound-off sts), work until 4 sts rem, bind off 2 sts for buttonhole, K2. When armhole measures approx. 7-9-11 cm (2.8-3.5-4.3 in), bind off 13-19-21 mid sts for neck edge. Finish each side separately.

Bind off at neck edge every 2nd row 1x3, 1x2, and 1x1 st = 10-13-15 sts rem for shoulder. When armhole measures 9-11-13 cm (3.5-4.3-5.1 in), change to needles size 2½ mm and pink/blue yarn. Work 2 cm (0.8 in) in K1,P1 rib, but when rib measures 1 cm (0.4 in), make a buttonhole at armhole edge. Bind off. Work same for the other side, rev all shaping.

Sleeves

Using needles size 2½ mm and pink/blue yarn, cast on 28- 34-38 sts. Work in rnds 2-3-3 cm (0.8-1.2-1.2 in) in K1,P1 rib. Change to needles size 3 mm and beige yarn. Place a marker mid under arm. Cont working in St st until work measures approx. 13-15-17 cm (5.1-5.9-6.7 in), but inc 1 st both sides of the marker every 3rd rnd until you have 56-68-78 sts on a rnd. Bind off 8 sts mid under arm (4 sts both sides of the marker). Purl 1 row (= WS). Cont working back and forth 2 cm (in) in St st (buttonband). Bind off rather loosely.

Work same for the other sleeve.

Neck band, front

Using needles size 2½ mm and pink/blue yarn, pick or knit up 53-57-63 sts along neck edge and ribbed edges. Work back and forth 2 cm (0.8 in) in rib, but after 1 cm (0.4 in) make 1 buttonhole. Bind off.

Neck band, back

Using needles size 2½ mm and pink/blue yarn, pick or knit up 8 sts from each ribbed edge on shoulders + sts on holder = 41-47-49 sts. Work 2 cm (0.8 in) in K1,P1 rib. Bind off. Weave in all ends on WS.

Pocket

Using needles size 3 mm and beige yarn, cast on 21-23-25 sts.

Work 4 rows in St st. Beg from RS, and work as foll:

St st over 2-3-4 sts, patt as charted over 17 sts, St st over 2-3-4 sts. When patt is ready, change to needles size 2½ mm and pink/blue yarn. Work 1 ½-2-2 cm (0.6-0.8-0.8 in) in K1,P1 rib.

Bind off rather loosely.

Finishing:

Dampen pocket slightly. Sew it on front, mid between last row of heart patt, = hearts are in line (see photo).

Sew the bottom seam.

Sew on sleeves from shoulder downwards along back, until mid under arm. Front: Sew on buttons, matching the buttonholes.

Crochet 2 hearts in pink/light blue. Crochet a chain to combine the hearts: Fasten yarn with 1 sl st to one heart, ch70, and fasten it with 1 sl st to the other heart. Break yarn, and weave in on WS. Sew to upper left corner of the pocket.

Slip the bunny inside the pocket.

HAT

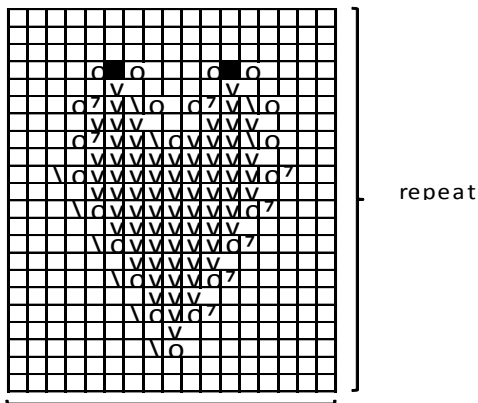
Beg from one ear flap. Using needles size 2½ mm and pink/blue yarn, cast on 3 sts. Work back and forth in K1,P1. Inc 1 st inside selvage st beg of each row until you have 19-21-23 sts on a row = 1 ear flap. Work same for the other ear flap. Slip ear flaps on same short circular needle: Work sts over one ear flap, cast on 37-39-41 sts (= front), work sts over other ear flap, cast on 13-15-17 sts (= back)= 88-96-104 sts. Work 2 cm (0.8 in) in rnds in rib. Change to needles size 3 mm and beige yarn. Cont working in St st until work measures 10-11-12 cm (4-4.3-4.7 in) (measured mid front), but after 3 rnds work 1 heart patt mid front (place a marker mid front, and check from where to beg patt). Dec for crown: Knit all sts tog in pairs. Knit 1 rnd. Rep dec every 2nd rnd until 11-12-13 sts rem. Break yarn, thread through rem sts, pull tightly, and weave in on WS.

Twist 2 approx. 20 cm (7.9 in) long cords using double yarn, pink/blue, sew to ear flaps.

Crochet 2 hearts in pink/light blue. Crochet a chain to combine the hearts: Fasten yarn with 1 sl st to one heart, ch40, and fasten it with 1 sl st to the other heart. Break yarn, and weave in on WS. Sew on top of the hat.

Weave in all ends on WS.

PATTERN FOR OVERALL - BLANKET - SCARF - MITTENS



↑ repeat
mid pattern

- = K on RS, P on WS
- ◻ = P on RS, K on WS
- = sl 1 st, K2tog, pssso
- ◻ = 1 yo
- ◻ = K2togtbl
- ◻ = K2tog

SCARF

Size: Length, **small** approx. 41 cm (16.1 in), **large** approx. 47 cm (18.5 in)

Using needles size 3 mm and beige yarn, cast on 5-7 sts. Work back and forth in Garter st. Inc 1 st inside selvage st beg of each row until you have 21-27 sts on a row, but after 4 rows work patt as charted (Note! Knit pattern's p-sts on RS, and purl them on WS = St st). When work measures 7-8 cm (2.8-3.1 in), divide work into two, front and back. Change to pink/blue yarn. Slip every second st on holder behind the work (= back). Cont working with rem 10-13 sts approx. 6-7 cm (2.4-2.8 in) in rib. Work same with sts on holder. Slip sts on same needle again, and cont working in rib with beige yarn. When work measures 28-32 cm (11-12.6 in), measured from cast on edge, divide work again, and work rib with pink/blue same as before. Change to beige yarn, and end the work same as beg (turn chart upside down), dec instead of inc until 5-7 sts rem. Bind off. Weave in all ends on WS.

MITTENS

Using needles size 2½ mm and pink/blue yarn, cast on 28-34-38 sts. Work in rnds 4-5-6 cm (1.6-2-2.4 in) in K1,P1 rib. Change to beige yarn and needles size 3 mm. Adjust evenly across first rnd number of sts to be 35-32-37 sts. Divide sts on 4 dpn. Next rnd: St st over 7-9-10 sts, patt as charted over 17 sts, St st over 7-9-10 sts. Work as established until patt is ready. Work 2 rnds in St st, adjusting evenly across last rnd number of sts to be 28-32-36 sts. Divide sts evenly on 4 needles. Beg dec: K2tog beg of each dpn. Rep dec every 2nd rnd until 8 sts rem. Break yarn, thread through rem sts, pull tightly, and weave in on WS.

Work same for the other mitten.

Weave in all ends on WS.

Twist an approx. 45-50-60 cm (17.7-19.7-23.6 in) long cord using double yarn, pink/blue, and to combine the mittens.

BLANKET

Using needles size 2½ mm and pink/blue yarn, cast on 145 sts. Work back and forth 5 cm (2 in) in K1,P1 rib. Slip first and last 15 sts on holder. Work 2 rows in St st over rem 115 sts. Cont as

follow: *St st over 5 sts, patt as charted over 17 sts*, rep *-* 4 times more, end with St st over 5 sts. Cont working back and forth, rep patt report 11 times in height, work measures approx. 65 cm (25.6 in). Slip sts on holder. Work both edges with pink/blue yarn in rib until edges measure same as the blanket (do not stretch while measuring). Sew edges along the blanket. Slip all sts (edges + 115 sts on holder) on same needle = 145 sts. Cont working back and forth in K1,P1 rib with pink/blue yarn until edge measures approx. 5 cm (2 in). Bind off. Weave in all ends on WS.

Pocket

Using needles size 3 mm and beige yarn, cast on 27 sts. Work 4 rows in St st. Beg from RS, and work as foll:

St st over 5 sts, patt as charted over 17 sts, St st over 5 sts. Cont working back and forth. When patt is ready, work 4 rows in St st. Change to needles size 2½ mm and pink/blue yarn. Work 3 cm (1.2 in) in K1,p1 rib. Bind off.

Weave in all ends on WS.

Sew pocket mid of 4th heart row from upper edge of the blanket (see photo).

Crochet 2 small hearts, and a ch85 to combine the hearts. Sew to upper corner of the pocket.

Slip a bunny inside the pocket.

BOTTELEWARMER

Beg from up: Using needles size 2½ mm and pink/blue yarn, cast on 60 sts. Work in rnds 2 cm (0.8 in) in K1,P1 rib.

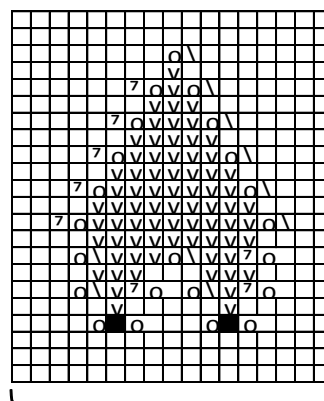
Change to needles size 3 mm and beige yarn. Knit 2 rnds. Eyelet rnd: *K2tog, 1 yo*, rep *-* across the rnd. Next rnd:

Knit all yo's tbl. Cont working in rnds in patt as charted, rep 2 times (= 2 hearts in height). Work 2 rnds in Garter st. Cont working in Garter st, but dec 12 sts evenly across first rnd, and on next knit-rnd dec 8 sts evenly across the rnd. Bind off.

Weave in all ends on WS.

Crochet 2 hearts in pink/blue, and ch160. Thread chain into the eyelet rnd, and fasten hearts at each end. Tie into a bow.

PATTERN FOR BOTTLEWARMER



repeat

- = K on RS, P on WS
- ◻ = P on RS, K on WS
- = sl 1 st, K2tog, pssso
- ◻ = 1 yo
- ◻ = K2togtbl
- ◻ = K2tog

- = Knit
- = sl 1 st, K2tog, pssso
- ◻ = 1 yo
- ◻ = K2togtbl
- ◻ = K2tog

Viking Baby ull

1114-8

Sweater, cardigan, pants, hat, scarf, socks and blanket

Size	BabyB/Prem.	1	3	6/9	12 months
Chest, approx.	34	40	44	48	50 cm
	13.4	15.7	17.3	18.9	19.7 in
Length, approx.	17	21	23	27	32 cm
	6.7	8.3	9.1	10.6	12.6 in
Sleeve length, approx.	13	16	18	22	24 cm
	5.1	6.3	7.1	8.7	9.4 in
Sleeve width, approx.	9	10	11	12	14 cm
	3.5	4	4.3	4.7	5.5 in
Neck, approx.	10	11	12	13	14 cm
	4	4.3	4.7	5.1	5.5 in
Leg length, approx.	14	15	17	20	23 cm
	5.5	5.9	6.7	7.9	9.1 in
Circumference, approx.	33	35	37	39	41 cm
	13	13.8	14.6	15.4	16.1 in

YARN ALTERNATIE: Viking Baby ull (100% merino wool, superwash), Viking Pure Milk Fiber ((100% milk fiber), 50 g ball

Sweater

Heather, 368	2	2	2	3	4 balls
White, 300	1	1	1	1	1 ball

Cardigan

White, 300	2	2	2	3	4 balls
------------	---	---	---	---	---------

Pants

White, 300	2	2	3	4	4 balls
------------	---	---	---	---	---------

Hat, scarf and socks

Heather, 368	1	1	1	1	1 ball
White, 300	1	1	1	2	2 balls

Blanket

Heather, 368					5 balls
--------------	--	--	--	--	---------

Circular needle and double pointed needles size 2 ½ and 3mm – US 1 or 2 and 3 – UK/Canadian 13 or 12 and 11

+ small pearls (approx. 200 pearls for sweater or cardigan -

approx. 200 pearls for hat and approx. 1000 pearls for blanket)

+ 4-4-4-6-6 small plastic snap fasteners for cardigan

+ 1 snap fastener for sweater

+ elastic for pants

Gauge: 28 sts = approx. 10 cm (4 in) over St st using needles size 3 mm. 42 sts = approx. 10 cm (4 in) over patt (with pearls sewn on) using needles size 3 mm. **Check your gauge to ensure success.**

Sew on pearls as foll:

Beg from 1st patt row (RS), 1 pearl to k-st, next pearl to 2nd and 3rd k-sts by drawing them tog. Cont sewing on the pearls by sewing sts tog in pairs across the row. Skip approx. 4 rows, and sew pearls in the same way, forming a grid patt (see photo).

Note: Instead of using pearls, you can use a contrast clr and create the grid by embroidery.

Note! Sweater is worked in one piece with a split mid back, seams on sides and under arms.

SWEATER

Beg with front. Using needles size 3 mm and heather clr yarn, cast on 48-56-62-68-70 sts. Work back and forth in Garter st. When work measures 8-11-12-15-18 cm (3.1-4.3-4.7-5.9-7.1 in), knit 1 row adjusting evenly across the row the number of sts to be 71-83-91-99-103 sts. Beg **patt** from RS: *P3, K*, rep *-* until 3 sts rem, P3. Next row (= WS): Knit all k-sts, and purl all p-sts (k-sts on RS form the patt where pearls are sewn later on). Cast on 9-11-13-15-17 sts end of each row 4 times each side = 143-171-195-219-239 sts. (**Note! Work all sleeve sts in Garter st, and patt over front sts**). When work measures approx. 14-18-20-23-28 cm (5.5-7.1-7.9-9.1-11 in), bind off 13-15-17-19-21 mid sts for neck edge.

Right front: Cont working in patt and Garter st. Bind off at neck edge every 2nd row 1x3, 1x2, and 1x1st. When neck edge measures approx. 3-3-3-4-4 cm (1.2-1.2-1.2-1.6-1.6 in), and sleeve width is approx. 9-10-11-12-14 cm (3.5-4-4.3-4.7-5.5 in), cast on 12-13-14-15-16 sts at neck edge. Cont working in patt and Garter st for approx. 5 cm (2 in).

Work same for **left front**, rev all shaping.

Slip all sts on same needle. Work 1 row, and cast on 1st between 2 pieces (= split) = 71-83-91-99-103 sts worked in patt. Cont working back and forth with patt and Garter st until sleeve width is approx. 17-19-21-23-27 cm (6.7-7.5-8.3-9.1-10.6 in). Bind off 9-11-13-15-17 sts beg of each row 4 times each side = 71-83-91-99-103 sts. Next row: Dec evenly across next row the number of sts to be 48-56-62-68-70 sts. Cont working back and forth in Garter st until back measures the same as front. Bind off..

Weave in all ends on WS.

Beg from back, and sew on the pearls as explained earlier.

Cont with pearl patt over all back, shoulders and front.

Finishing

Sew side and sleeve seams.

Neck band

Beg from left side of the split, using needles size 2½ mm and white yarn, pick or knit up approx. 70-74-78-82-90 sts along neck edge. Work back and forth 2 cm (0.8 in) in K2,P2 rib. Bind off in rib. Weave in all ends on WS.

Sew snap fastener on neck band at split edge.

CARDIGAN

Worked in one piece. Beg from back. Using needles size 3 mm and white yarn, cast on 48-56-62-68-70 sts. Work back and forth in Garter st until work measures approx. 8-11-12-15-18 cm (3.1-4.3-4.7-5.9-7.1 in). Knit 1 row, adjusting evenly across the row the number of sts to be 71-83-91-99-103 sts. Cont working in patt P3, K1 until 3 sts rem, P3. Next row: Knit all k-sts, and purl all p-sts (= forms the patt where pearls will be sewn on). Cont working in patt, and cast on end off each row 9-11-13-15-17 sts altog. 4 times. (sleeves are worked in Garter st) = 143-171-195-219-239 sts. When work measures 17-21-23-27-32 cm (6.7-8.3-9.1-10.6-12.6 in), measured from cast on edge, bind off 27-29-31-33-35 mid sts for neck edge. Finish each side separately.

Right front

Cont working in patt and Garter st same as before 1 ½ -2-2-3-3 cm (0.6-1-1-1.2-1.2 in) more. cast on at neck edge every 2nd row 1x1, 1x2, 1x3, and 1x11-12-13-14-15 sts (4 last sts are worked in **Garter st**) = 71-85-97-109-119 + 4 edge sts. Cont working back and forth until armhole measures 17-19-21-23-27 cm (6.7-7.5-8.3-9.1-10.6 in). Bind at each edge every 2nd row 9-11-13-15-17 sts altog. 4 times. Knit 1 row, adjusting evenly across the row the number of sts to be 24-28-31-34-35 sts + 4 edge sts. Cont working in Garter st until work measures same as back. Bind off.

Left front

Work same as for right front, rev all shaping.

Weave in all ends on WS.

Sew on pearls.

Finishing

Sew side and sleeve seams.

Neck and

Beg from right front. Using needles size 2½ mm and white yarn, pick or knit up approx. 78-82-86-90-98 sts (incl 4 sts from each front edge) across neck edge. Work back and forth 2 cm (0.8 in) in Garter st. Bind off.

Weave in all ends on WS.

Sew on snap fasteners evenly spaced apart.

PANTS

Beg from upper edge. Using a short circular needle size 2½ mm and white yarn, cast on 112-116-120-132-140 sts. Work in rnds 5-6-7-8-8 cm (2-2.4-2.8-3.1-3.1 in) in K2,P2 rib. Change to needles size 3 mm. Knit 1 rnd, adjusting evenly across the rnd the number of sts to be 116-120-128-140-148 sts. Place markers each side, 58-60-64-70-74 sts for back and front, and mid front and back (28-29-31-34-36 sts both sides of the markers). Cont working in St st. Work short rows to rise the back of the pants: Beg mid back, K6, turn, P12. Turn, and work 6 more sts each time altog. 8-8-10-10-12 times = 4 -4-5-5-6 times for each side. Cont working in St st over all sts until work measures approx. 15-18-21-25-27 cm (5.9-7.1-8.3-9.8-10.6 in), measured from cast-on edge. Inc 1 st both sides of mid front and back markers, 3 times every 2nd rnd, and 2 times every rnd = 136-140-148-160-168 sts. Divide work mid front and back with 68-70-74-80-84 sts for each leg. Finish legs separately.

Leg

Place a marker at the inner seam (= beg of rnd). Dec 1 st both sides of the marker approx. every 2 cm (0.8 in). When work measures 11-12-14-16-19 cm (4.3-4.7-5.5-6.3-7.5 in), or desired length, knit 1 rnd adjusting evenly across the rnd to be 32-36-40-44-48 sts. Change to needles size 2½ mm. Cont working 3-3-3-4-4 cm (1.2-1.2-1.2-1.6-1.6 in) in K2,P2 rib. Bind off in rib.

Work same for the other leg, rev all shaping.

Weave in all ends on WS.

Finishing

Sew crotch seam, Fold waist rib in double, and sew on WS.

Thread elastic to waist.

HAT

Using needles size 3 mm and heather clr yarn, cast on 107-111-115-123-131 sts. Work back and forth 2 rows in Garter st. Cont working in patt P3, K1, rep until 3 sts rem, P3. Turn, knit all k-sts, and purl all p-sts. Rep these 2 rows until work measures 3-3-4-4-5 cm (1.2-1.2-1.6-1.6-2 in). Work 4 rows in Garter st (= folding edge). Cont working in K1,P1 rib, until work measures 6-6-8-8-10 cm (2.4-2.4-3.1-3.1-4 in). Change to white yarn. Cont working in Garter st, but dec evenly across first row the number of sts to be 83-87-91-99-107 sts. When work measures 12-14-16-17-18 cm (4.7-5.5-6.3-6.7-7.1 in), bind off 30-31-32-33-35 sts each side. Cont working in Garter st over rem mid sts, until back piece measures the same as the bound-off sides, but when back pieces measures 2 cm (0.8 in) less than the total length, bind off 1 st at each edge every 4th row 3 times. Bind off.

Sew on pearls on patt edge.

Fold edge in double on RS, and fasten with few sts each side.

Sew mid piece to the sides.

Using needles size 3 mm and heather clr yarn, knit up along the lower edge approx. 73-77-83-99-107 sts. Work 4 rows in Garter st. Eyelet row: *K2tog, 1 yo*, rep *-* across the row. Work 4 rows in Garter st. Bind off.

Weave in all ends on WS.

Twist a cord using double heather clr yarn, approx. 50 cm (19.7 in) long. Thread into eyelet row.

SCARF Size: small 41 cm (16.1 in)

large 47 cm (18.5 in)

Using needles size 3 mm and white yarn, cast on 5-7 sts. Work back and forth in Garter st, and inc 1 st at each edge inside 1 selvage st until you have 21-27 sts on a row. When work measures 7-8 cm (2.8-3.1 in), change to heather clr yarn. Divide work into two, front and back. Slip every 2nd st on holder, and hold to back. Cont working approx. 6-7 cm (2.4-2.8 in) in K1,P1 rib. Work same with heather clr yarn over the sts on holder. Slip sts on same needle, and cont working in Garter st with white yarn until work measures approx. 28-32 cm (11-12.6 in). Change to heather clr yarn, and divide work again, and work in rib same as in the beg. Change to white yarn, and end the work same as beg, **but** dec instead of inc until 5-7 sts rem. Bind off. Weave in all ends on WS.

SOCKS

Using needles size 3 mm and heather clr yarn, cast on 37-41-43-47-49 sts. Work 4 rows in Garter st. Change to white yarn, and cont working in Garter st until work measures 2-2 ½-3-3-4 cm (0.8-1-1.2-1.2-1.6 in). Eyelet row: *K2tog, 1 yo*, rep *-* across the row. Knit 1 row. Next row: Knit, adjusting evenly across the row the number of sts to be 31-33-35-39-41 sts. Change to heather clr yarn, and purl 1 row. Beg with RS row: Work 3-4-5-6-6 cm (1.2-1.6-2-2.4-2.4 in) in Garter st over 11 mid sts, or desired length. Slip sts on holder. Slip 10-11-12-14-15 side sts on needles, pick or knit up 12-12-13-14-15 sts along each side of mid piece with heather clr yarn = 55-57-61-67-71 sts. Work 4-4-5-6-7 rows in Garter st. Dec as foll: Beg from RS, K22-23-25-28-30, K2tog, K7, K2tog, K22-23-25-28-30. Next row: Knit, Cont dec every 2nd row with 2 sts less mid front until 3 sts rem. Dec mid sts: Sl 1 st, K2tog, pssso. Bind off rather loosely. Weave in all ends on WS. Sew sole seam, and mid back seam.

Work same for the other sock.

Twist 2 cords using double heather clr yarn, approx. 40 cm (15.7 in) long, and thread through eyelet row.

BLANKET

Using needles size 3 mm and heather clr yarn, cast on 140 sts. Work back and forth 5 cm (2 in) in Garter st. Knit 1 row, and inc evenly across the row the number of sts to be 223 sts. Beg patt on RS row: Garter st over 14 sts (= edge), P3, K1, rep until 17 sts rem, P3, and work Garter st over rem 14 sts (= edge). Cont working back and forth, knit all k-sts, purl all p-sts, and work edges in Garter st. When work measures 65 cm (25.6 in), measured from cast-on edge, knit 1 row and dec evenly across the row the number of sts to be 140 sts. Work 5 cm (2 in) in Garter st. Bind off. Weave in all ends on WS. Sew on the pearls.

Viking Baby ull

1114-9

Cardigan with hood, pants, mittens and socks

Size	3/6	9/12	18	24 months 4yrs	3-
Chest, approx.	54 21.3	56 22	61 24	65 25.6	70 cm 27.6 in
Length, approx.	24 9.4	28 11	33 13	36 14.2	40 cm 15.7 in
Sleeve length, approx.	17 6.7	19 7.5	21 8.3	24 9.4	30 cm 11.8 in
Sleeve width, approx.	10 4	11 4.3	12 4.7	13 5.1	16 cm 6.3 in
Leg length, approx.	19 7.5	23 9.1	26 10.2	30 11.8	40 cm 15.7 in
Pants, width	50 19.7	53 20.9	55 21.7	58 22.8	61 cm 24 in

ALTERNATIVE YARN: Viking Baby ull (100% merinowool, superwash), Viking Pure Milk Fiber (100% milk fiber), 50 g ball

Cardigan with hood

Blue, 322	3	3	4	5 balls
Beige, 307	1	1	1	1 ball

Pants

Blue, 322	2	2	3	4 balls
Beige, 307	1	1	1	1 ball

Hat and socks

Blue, 322	1	1	2	2 balls
Beige, 307	1	1	1	1 ball

Double pointed needles and circular needle size 2 ½ and 3 mm – US 1 or 2 and 3 – UK/Canadian 13 or 12 and 11 + zipper and elastic.

Gauge: 28 sts = approx. 10 cm (4 in) over St st using needles size 3mm. **Check your gauge to ensure success.**

CARDIGAN WITH HOOD

Using needles size 2½ mm and beige yarn, cast on 147-155-169-179-187 sts Work back and forth in K1,P1 rib. Work 4 rows in beige, and change to blue yarn. When work measures 3 cm (1.2 in), change to needles size 3 mm. Knit 1 row, adjusting evenly across the row the number of sts to be 152-164-176-184-196 sts Place markers each side, 78-82-90-94-98 sts for back, and 37-41-43-45-49 sts for each front. Cont working back and forth as foll: Beg from RS, P2-3-5-6-7, patt I as charted, P1-4-4-5-8, St st over 78-82-90-94-98 sts = back, P1-4-4-5-8, patt I as charted, P2-3-5-6-7. When work measures 14-17-21-23-24 cm (5.5-6.7-8.3-9.1-9.4 in), bind off 8 sts each side (4 sts both sides of the markers). Finish back and fronts separately.

Back

Cont working back and forth in St st. Bind off at each edge every 2nd row 1x2 and 1x1 st. When work measures 24-28-33-36-40 cm (9.4-11-13-14.2-15.7 in), and armhole measures 10-11-12-13-16 cm (4-4.3-4.7-5.1-6.3 in), bind off rather loosely.

Right front

Cont working back and forth in patt. Bind off at armhole edge same as back. When armhole measures 7-8-8-9-12 cm (2.8-3.1-3.1-3.5-4.7 in), bind off for neck edge every 2nd row 1x8-10-12-14-16, 1x3, 1x2, and 1x1 st. When work measures same as back,

bind off.

Work same for left front, rev all shaping.

Sleeves

Using dpn size 2½ mm and beige yarn, cast on 34-36-38-40-44 sts. Work rib same as for body. Change to needles size 3 mm. Place a marker mid under arm. Knit 1 rnd, inc evenly across the rnd 10-10-11-13-18 sts. Cont working in St st. Inc 1 st both sides of the marker approx. every 2 cm (0.8 in) until you have 58-62-68-74-89 sts on a rnd. When work measures 17-19-21-24-30 cm (6.7-7.5-8.3-9.4-11.8 in), bind off 8 sts mid under arm (4 sts both sides of the marker). Cont working back and forth. Bind off at each edge every 2nd row 1x2 and 1x1 st. Bind off rem sts.

Work same for the other sleeve.

Weave in all ends on WS.

Finishing

Join shoulder seams.

Right front band

Beg from RS. Using needles size 2½ mm and beige yarn, pick or knit up 59-71-81-89-99 sts. Work back and forth 6 rows in St st. Bind off knitwise rather loosely on WS. Turn the garment inside out, using needles size 2½ mm and beige yarn, pick from WS 59-71-81-89-99 sts. Work back and forth in 5 rows in St st. Bind off rather loosely.

Work same for left front band.

Sew on zipper.

Sew on sleeves.

Neck band

Using needles size 2½ mm and blue yarn, knit or pick up 88-92-98-102-112 sts. Work back and forth 2 cm (0.8 in) in St st. Knit 1 row (= WS) = folding edge, work 2 cm (0.8 in) in St st. Bind off rather loosely. Fold neck band in double, and sew on WS.

Hood

Using needles size 2½ mm and beige yarn, cast on 110-116-118-120-130 sts Work back and forth 4 cm (1.6 in) in K1,P1 rib. Change to blue yarn, and cont working in rib until work measures 6 cm (2.4 in). Change to needles size 3 mm. Work back and forth as foll: St st over 38-41-42-43-48 sts, patt I as charted, St st over 38-41-42-43-48 sts. When work measures 15-16-17-18-19 cm (5.9-6.3-6.7-7.1-7.5 in), bind off mid 34 sts. Finish each side separately. Work 4 cm (1.6 in) in St st. Bind off. Work same for the other side.

Sew mid back seam.

Sew top seam.

Fold front rib in double, and sew on WS.

Sew hood at neck edge, with neck band inside. Beg from mid back. Don't sew edges of front ribbing, but leave the ends open. Using beige yarn, twist a cord, and thread it to the front edge

PANTS

Beg from waist.

Using needles size 2½ mm and blue yarn, cast on 130-138-146-154-162 sts. Work in rnds 6 cm (2.4 in) in K1,P1 rib. Change to needles size 3 mm. Knit 1 rnd, and inc evenly across the rnd 10 sts = 140-148-156-164-172 sts.

Place markers each side, 70-74-78-82-86 sts for both back and front. Place also markers mid front and back = 34-36-38-40-42 sts both sides of the midmarkers. Work short rows to rise the back: Beg mid back, K6, turn, P12, turn, K18, turn, P24. Cont working back and forth with 6 more sts each side altog. 10-12-12-12-14 times (= 5-6-6-6-7 times each side). Cont working in rnds in St st overall sts, but work patt II (both sides the same) 7 sts before each side marker = cables on both legs. When work measures 20-22-24-26-26 cm (7.9-8.7-9.4-10.2-10.2 in), measured from cast-on edge. Inc 1 st both sides of mid front and back markers, 3 times every 2nd rnd, and then 2 times each rnd = 160-168-176-184-192 sts. Divide work mid front and back, 80-84-88-92-96 sts for each leg. Finish each leg separately.

Leg

Place a marker beg of the rnd = inner seam of the leg. Work in rnds in St st and patt on the side. Dec 1 st both sides of the marker every 2 cm (0.8 in). When work measures 16-20-23-27-37 cm (6.3-7.9-9.1-10.6-14.6 in) (or 3 cm (1.2 in) less than total length), knit 1 rnd adjusting evenly across the rnd the number of sts to be 48-48-54-54-58 sts. Change to needles size 2 1/2 mm. Work 2 cm (0.8 in) in K1,P1. Change to beige yarn, and work 1 cm in rib. Bind off in rib. Work same for the other leg. Weave in all ends on WS. Fold upper rib edge in double and sew on WS. Thread elastic on waist.

MITTENS

Size 3/6 9/12 months

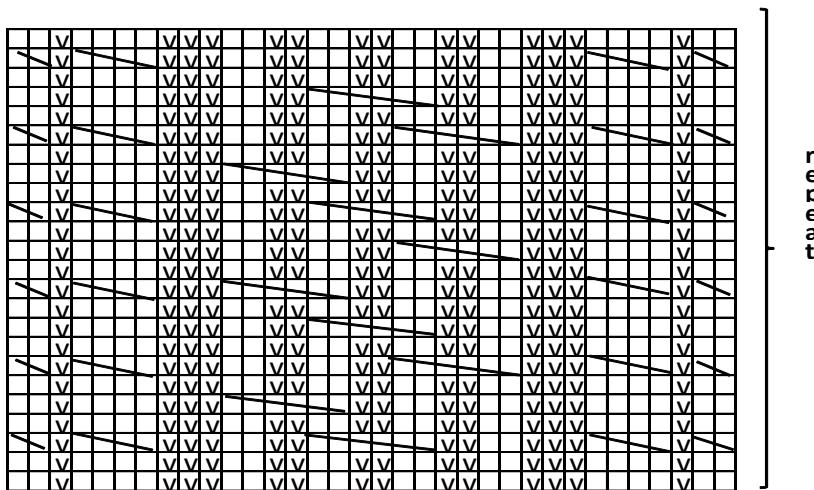
Using needles size 2 1/2 mm and beige, cast on 34-38 sts. Work in rnds 1 cm (0.4 in) in K1.P1 rib. Change to blue yarn, and cont working in rib until work measures 5-6 cm (2-2.4 in). Change to needles size 3 mm. Knit 1 rnd, adjusting evenly across the rnd to be 36-40 sts. Beg mid under mitten, K11-13, patt II, K11-13. Cont working in rnds until work measures approx. 11-12 cm (4.3-4.7 in), measured from cast-on edge. Place markers each side, 18-20 sts for back and front. Beg dec: Work until 2 sts rem before the marker, K2togtbl, K2tog. Rep dec every 2nd rnd at each edge until 8-8 sts rem (**Note:** Keep rep cable patt on front as long as there is enough sts). Break yarn, thread through rem sts, pull tightly, and weave in on WS. Work same for the other mitten. Weave in all ends on WS. Twist a cord, approx. 50-60 cm (19.7-23.6 in) using beige yarn in double, and combine the mittens with it.

SOCKS

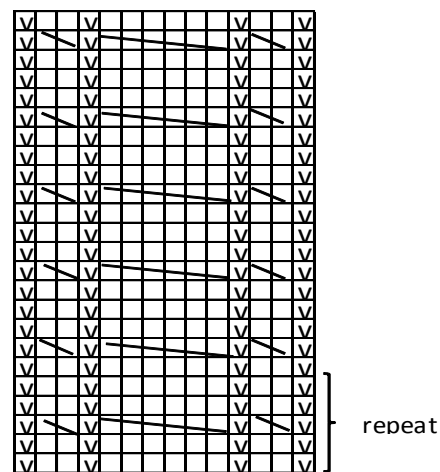
Size 3/6 9/12 18/24 months 3-4 yrs

Using needles size 2 1/2 mm and beige yarn, cast on 36-40-44-48 sts. Work in rnds 1 cm (0.4 in) in K1,P1 rib. Change to blue yarn, and work 2 cm (0.8 in) in rib. Change to needles size 3 mm. Place markers each side, 18-20-22-24 sts for both sides. (**Note:** Rnd beg mid back heel). K11-13-15-17, patt II over 14 sts, K11-13-15-17. Cont working in rnds until work measures 6-7-7-8 cm (2.4-2.8-2.8-3.1 in), measured from cast-on edge. Divide work in two, and work for heel over mid back sts: Work back and forth in St st over 16-18-20-24 sts. Dec as foll: Beg from RS, knit until 7-8-8-9 sts rem, sl 1 st, K1, psso, turn, purl until 7-8-8-9 sts rem, P2tog. Turn, knit until 6-7-7-8 sts rem, sl 1 st, K, turn, P6-7-7-8, P2tog. Turn, and cont working in the same way, 1 st less end of each row until 6-6-8-8 sts rem. Cont working in rnds over all sts, pick up 9-10-11-13 sts each side of the heel (Next rnd: Ktbl) + sts from front = 42-46-52-58 sts. Cont working in rnds in St and cable patt. Dec 1 st before 1st sidemarker and 1 st after 2nd sidemarker. Rep dec every 2nd rnd until 36-40-44-48 sts rem on a rnd. When foot measures 8-9-10-13 cm (3.1-3.5-4-5.1 in) (or desired length), dec as foll: work until 2 sts rem before sidemarker, K2togtbl, K2tog, work until 2sts rem before next sidemarker, and rep dec. Rep dec every rnd (rep cable patt as long as there is enough sts) until 8 sts rem on a rnd. Break yarn, thread through rem sts, pull tightly, and weave in on WS. Work same for the other sock. Weave in all ends on WS.

PATTERN I over 34 sts



PATTERN II



□ = K on RS, P on WS

▣ = P on RS, K on WS

▤ = sl 1 st on cn, and hold to back, K2, K st from cn

▥ = sl 2 sts on cn, and hold to back, K2, K sts from cn

▦ = sl 2 sts on cn, and hold to front, sl 2 sts on another cn, and hold to back. K2. P2 from cn held to back. K2 from cn held to front

Viking Baby Ull

Babysset

1114-10

Size:	BabyB/Prem	1	3	6	9
months					
Chest: approx.	35	45	49	52	56 cm
	13.8	17.7	19.3	20.5	22 in
Length: approx.	17	20	23	25	27 cm
	6.7	7.9	9.1	9.8	10.6 in
Sleeve length: approx.	12	14	15	16	17 cm
	4.7	5.5	5.9	6.3	6.7 in
Leg length: approx.	12	14	15	17	19 cm
	4.7	5.5	5.9	6.7	7.5 in

ALTERNATIVE YARN: Viking Baby Ull (100% merino wool), Viking pure MILK fiber (100% milk fiber), 50 g ball

CARDIGAN

White, 300 1 2 2 3 3 balls

HAT AND SOCKS

White, 300 1 1 2 2 2 balls

TROUSERS

White, 300 1 2 2 3 3 balls

Circular needle and double pointed needles size 2½ and 3mm – US 1 or 2 and 3 – UK/Canadian 13 or 12 and 11
+ crochet hook size 2½ mm – US B/1 or C/2 – UK/Canadian 12
+ 4-4-5-5-5 small buttons for cardigan
+ 2 small buttons for trousers

Gauge: 28 sts = approx. 10 cm (4 in) over St st using needles size 3 mm. **Check your gauge to ensure success.**

CARDIGAN

Using needles size 2½ mm, cast on 97-127-137-147-157 sts. Work 4 rows in Garter st, and then K1,P1 rib until work measures approx. 2½-2½-3-3-3 cm (1-1-1.2-1.2-1.2 in). Work 4 rows in Garter st. Cont working back and forth in patt as charted until work measures approx. 9-11-13-14-15 cm (3.5-4.3-5.1-5.5-5.9 in). Place markers each side, 51-65-71-75-81 sts for back, and 23-31-33-36-38 sts for front. Finish back and fronts separately.

Back

Cont working back and forth in patt. When work measures approx. 17-20-23-25-27 cm (6.7-7.9-9.1-9.8-10.6 in), and armhole measures approx. 8-9-10-11-12 cm (3.1-3.5-4-4.3-4.7 in), bind off.

Front

Work same as for ack. When work measures approx. 15-17-20-22-23 cm (5.9-6.7-7.9-8.7-9.1 in), bind off at neck edge every 2nd row 1x7-8-9-10-11, 1x3, 1x2, and 1x1 st = 10-17-18-20-21 sts rem for shoulder. Cont without dec until work measures same as back. Bind off. Work same for the other side, rev all shaping.

Sleeves

Using needles size 3 mm, cast on 35-41-43-45-47 sts. Work for edge same as for body. Place a marker beg of rnd. Cont working in rnds in patt as charted (check from mid st where to beg patt). Inc 1st both sides of the marker approx. every 1½-2-1½-1½-1 cm (0.6-0.8-0.6-0.6-0.4 in), until you have altog. 47-51-57-61-67 sts on a rnd (inc sts are worked in patt). When work measures the given length, or as desired, bind off. Work same for the other sleeve.

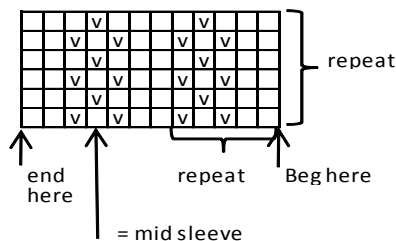
Finishing

Join shoulder seams.

Front bands: Using needles size 2½ mm, pick or knit up approx. 44-48-56-62-66 sts along left front edge for a girl (right front edge for a boy). Knit 1 row. Work 2 rows in Garter st. Work 5 rows in K1,P1 rib. Bind off in rib. Place markers for altog. 4-4-

5-5-5 buttons. Work same for the other band, but make buttonholes on first rib row. Buttonhole: Bind off 2 sts. Next row: Cast on 2 new sts over the bound-off sts.

Collar: Beg from RS. Using needles size 2½ mm, pick or knit up approx. 61-65-69-73-77 sts (not over front bands). Work same as for front bands. Place marker over each shoulder, and mid back. Inc 1 st both sides of each marker every 2nd row (= 6 new sts each time, work in Garter st and in rib). Work 3 rows in Garter st + 6 rows in rib, and 4 rows in Garter st. Bind off rather loosely.



□ = K on RS, P on WS

▣ = P on RS, K on WS

HAT

Beg with one ear flap. Using needles size 3 mm, cast on 5 sts. Work 2 first and last sts in Garter st, rem sts are worked in St st. Work back and forth, and inc 1 st at each every 2nd row edge inside 2 sts. Work until you have 17-19-21-23-25 sts on a row. Put work aside, and knit the other ear flap.

Slip ear flaps on same circular needle and cont working in rnds: Work sts over one ear flap, cast on 37-39-41-41-43 sts = mid front, work sts over the other ear flap, cast on 15-17-19-19-21 sts = mid back = 86-94-102-106-114 sts on a rnd. Work 4 rnds in Garter st, and then K1,P1 rib until work measures approx. 3-3-4-4-4 cm (1.2-1.2-1.6-1.6-1.6 in), work 4 rnds in Garter st. Cont working in rnds in St st, adjusting evenly across first rnd the number of sts to be 88-96-104-112-120 sts. When work measures approx. 8-9-10-11-12 cm (3.1-3.5-4-4.3-4.7 in), measured from mid front (or desired length), beg crown dec: *K6, K2tog*, rep *- * across the rnd. Work 1 rnd without dec. Rep dec every 2nd rnd with 1 st less between dec until 22-24-26-28-30 sts rem on a rnd. Next rnd: Knit all sts tog in pairs = 11-12-13-14-15 sts rem. Break yarn, thread through rem sts, pull tightly, and weave in on WS. Twist 2 approx. 30 cm (11.8 in) long cords, and sew one to each ear flap.

SOCKS

Using needles size 3 mm, cast on 30-35-40-45-45 sts. Work 4-4-4-5-5 cm (1.6-1.6-1.6-2-2 in) in patt as charted. Next rnd = eyelet rnd: *K2tog, 1 yo*, rep *- * across the rnd. Work for the heel over mid back = 15-17-20-22-22 sts Work until 1 st rem, turn, work until 1 st rem, turn, and work 1 st less every row until 3-5-6-6-6 mid sts rem. Turn, and work 1 st more every row. M1 between last mid st and next st in order to avoid holes in the work, knit these 2 sts tog. When all sts have been returned back to work, cont working in rnds in St st over all sts. Place markers each side (upper side and sole). Cont working in rnds in St st, and dec 1st at each marker (Note! Sts are dec from sole sts) every 2nd rnd 3-4-4-5-5 times = 24-27-32-35-35 sts rem on a rnd. When foot measures approx. 6-7-8-9-10 cm (2.4-2.8-3.1-3.5-4 in), or desired length, beg dec. Divide sts on 4 dpn. Dec 1 st beg of each needle every 2nd rnd 3-3-3-4-4 times, and then every rnd until 4-7-8-7-7 sts rem. Break yarn, thread through rem sts, and weave in on WS. Weave in all ends on WS. Work same for the other sock. Twist 2 cords, approx. 40 cm (15.7 in) long, and thread through eyelet rnd.

TROUSERS

Beg from upper edge of front: Using a pair of knitting needles size 3 mm, cast on 21-29-31-33-35 sts. Work back and forth 2 rows in P1,K1 rib. Next row: Make buttonholes at each edge inside 3 sts. Buttonhole: Bind off 2 sts. Next row: Cast on 2 new sts over the bound-off sts. Work altog. 6 rows in rib. Cont working in rib over 5 first and last sts, work St st over rem sts. Inc1 st at each edge (inside 5 sts) every 2nd row until you have 37-49-59-63-65 sts on a row. Leave work aside, and work same for back, but without buttonholes. Slip both back and front on same circular needle, and cast on 9-11-13-13-13 sts between the pieces = mid under arms = 92-120-144-152-156 sts. Work 1-1-2-2-3 cm (0.4-0.4-0.8-0.8-1.2 in) in St st. (**Note!** Work rib over 5 sts at each edge first 2-2-3-5-5 rnds). Work 4 rnds in Garter st. Work 3-3-3-4-4 cm (1.2-1.2-1.2-1.6-1.6 in) in K1,P1 rib. Work 4 rnds in Garter st. Inc evenly across next rnd 8-10-16-18-24 sts = altog. 100-130-160-170-180 sts. Place markers each side, 51-65-81-85-91 sts for front and 49-65-79-85-89 sts for back + 1 marker mid front and back. Work short rows to rise the back: Beg from mid st, K6-7-7-7-8, turn, P11-13-13-13-15. Cont working in the same way with 5-6-6-6-7 sts more before each turning, altog. 4 times for each side. Knit 1 rnd over all sts. Cont working in rnds in St st and patt as charted until work measures approx. 6-12-14-15-16 cm (2.4-4.7-5.5-5.9-6.3 in), measured from the cast-on sts after ribbing. Inc 1 st both sides of mid front and back markers every 2nd rnd altog. 5-5-5-6-6 times = 20-20-20-24-24 inc sts (**Note!** These sts are worked in St st). Next rnd: Bind off 11-11-11-13-13 sts mid front, and 11-11-11-13-13 sts mid back. Work each leg separately (= 49-64-79-84-89 sts). Inc 1 st at the inner seam = 50-65-80-85-90 sts Cont working in rnds in patt same as earlier until leg measures approx. 9-11-11-13-15 cm (3.5-4.3-4.3-5.1-5.9 in). Dec evenly across the last rnd the number of sts to be 40-44-48-48-52 sts. Work 4 rnds in Garter st, approx. 2-2-3-3-3 cm (0.8-0.8-1.2-1.2-1.2 in) in K1,P1, 4 rnds in Garter st. Bind off. Work same for the other leg.

Finishing

Sew crotch seam.

Straps: Using needles size 2½ mm, cast on 7 sts. Work approx. 4-4-5-5-6 cm (1.6-1.6-2-2-2.4 in) in K1,P1 rib. Bind off. Work same for the other strap. Sew on straps on back (inside rib). Sew on buttons on front. Weave in all ends on WS.

Viking Baby Ull

Blanket and sleepingbag

1114-11

Sleepingbagsize: BabyB/1 months – 3/6 months – 9/12 months

Blanket, size: 50x70 cm

19.7x27.6 in

ALTERNATIVE YARN: Viking Baby Ull (100% merino wool), Viking pure MILK fiber (100% milk fiber), 50 g ball

BLANKET

White, 300

4 balls

SLEEPINGBAG

White, 300

8

10

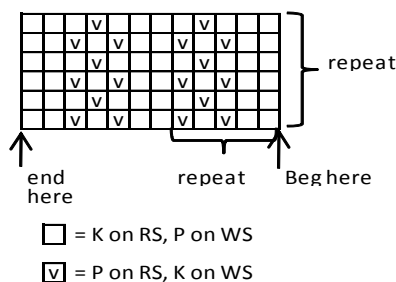
10 balls

Circular needle and double pointed needles size 3 and 4 mm – US 2 or 3 and 6 – UK/Canadian 11 and 8

+ 8-10-12 buttons for sleepingbag

gauge: 28 sts = approx. 10 cm (4 in) over St st using needles size 3 mm. **Check your gauge to ensure success. Gauge with**

double yarn: 23 sts = approx. 10 cm (4in) over St st using needles size 4 mm.



BLANKET

Using needles size 3 mm, cast on 161 sts. Cont working in patt as charted: Garter st over 12 sts (= edge sts), patt over next 137 sts, and Garter st over 12 sts (= edge sts). Cont working back and forth until work measures approx. 70 cm (27.6 in). Bind off.

SLEEPINGBAG

Using needles size 4 mm and double yarn, cast on 102-112-122 sts. Work 4 rows in Garter st. Cont working in K1,P1 rib until work measures approx. 6 cm (2.4 in). Work 4 rows in Garter st. Cont working back and forth in patt as foll: Garter st over 10 sts, patt as charted over next 82-92-102 sts, and Garter st over 10 sts. When work measures approx. 40-50-65 cm (15.7-19.7-25.6 in) (or desired length) = front. Place a marker (all measures are given from here). Cont working in patt and Garter st until work measures 60-75-95 cm (23.6-29.5-37.4 in), measured from the marker. **Note!** When work measures 10 cm (4 in) make 1 buttonhole at each edge, inside 4 sts. Buttonhole: Bind off 2 sts. Next row: Cast on 2 new sts over the bound-off ones. Make altog. 4-5-6 buttonholes approx. 10 cm (4 in) spaced apart (last one close to the upper edge of front rib folded in double), rest evenly spaced apart. When work measures 60-75-95 cm (23.6-29.5-37.4 in), bind off or slip sts on holder. Fold in double, and join the top seam to form a hood. Make a pompon, and fasten on top. Sew on 4-5-6 buttons on front. Weave in all ends on WS.

Viking Baby ull 1114-12

Sweater, pants, hat and socks

Size	3/6	9/12 months	2	3-4 yrs
Chest, approx.	51	58	64	71 cm
	20.1	22.8	25.2	28 in
Length, approx.	25	30	36	40 cm
	9.8	11.8	14.2	15.7 in
Sleeve length, approx.	20	24	28	31 cm
	7.9	9.4	11	12.2 in
Sleeve, width, approx.	12	13	15	16 cm
	4.7	5.1	5.9	6.3 in
Neck, approx.	13	14	16	17 cm
	5.1	5.5	6.3	6.7 in
Leg length, approx.	19	23	30	40 cm
	7.5	9.1	11.8	15.7 in

ALTERNATIVE YARN: Viking Baby Ull (100% merinowool, superwash), Viking pure milk fiber (100% milk fiber), 50 g ball

Sweater

White, 300	3	3	4	5 balls
Light Grey, 313	1	1	1	1 ball
Red, 350	1	1	1	1 ball

Pants and socks

Light Grey, 313	3	3	4	5 balls
White, 300	1	1	1	1 ball
Red, 350	1	1	1	1 ball

Hat

	3/9 months	1-2	3-4 yrs
Red, 350	1	1	1 ball
White, 300	1	1	1 ball
Light Grey, 313	1	1	1 ball

Circular needle and double pointed needles size 2 ½ and 3 mm – US 1 or 2 and 2 or 3 - UK/Canadian 13 or 12 and 11 + 4 buttons and 2 snap fasteners for sweater + elastic for pants

Gauge: 28 sts = approx. 10 cm (4 in) over St st using needles size 3 mm. **Check your gauge to ensure success.**

SWEATER

Using needles size 2½ mm and light grey yarn, cast on 140-160-176-196 sts. Work in rnds 2 cm (0.8 in) in K1,P1 rib. Change to red yarn, and work 1 cm (0.4 in) in rib. Change to needles size 3 mm and white yarn. Work in rnds in patt as charted. Inc evenly across first rnd the number of sts to be 144-162-180-198 sts. When patt is ready, cont working in rnds in St st until work measures 13-16-19-22 cm (5.1-6.3-7.5-8.7 in). Place markers each side, 73-81-91-99 sts for front, and 71-81-89-99 sts for back. Bind off 6-6-8-8 sts at each side (3-3-4-4 sts both sides of the markers). Finish back and front separately.

Back

Cont working back and forth in St st. Bind off at each edge every 2nd row 1x2, and 1x1 st. When work measures 23-28-34-38 cm (9.1-11-13.4-15 in), and armhole measures 10-11-13-14 cm (4-4.3-5.1-5.5 in), slip 17-21-23-27 mid sts on holder. Work each shoulder separately: Change to needles size 2½ and red yarn. Knit 1 row (= RS). Work 2 rows in K1,P1 rib. Change to light grey yarn, and work 5 rows in rib. Bind off in rib. Work same for the other shoulder.

Right front

Work same as for back. When work measures 21-26-32-35 cm (8.3-10.2-12.6-13.8 in), bind off 9-11-15-17 mid sts for neck edge. Finish each side separately. Bind off at neck edge every 2nd row 1x3, and 1x2 sts. When work measures same as back, change

to needles 2½ mm and red yarn. Knit 1 row (= RS). Work 2 rows in K1,P1 rib. Change to light grey yarn, and work 5 rows in rib, but make a buttonholes on first row. Buttonhole: Bind off 2 sts. Next row: Cast on 2 new sts over the bound-off sts. Buttonholes are placed 8-9-10-11 sts inside shoulder edge, and 7-8-9-10 sts inside neck edge. Bind off rather loosely in rib.

Work same for left front, rev all shaping.

Sleeves

Using needles size 2½ mm and grey yarn, cast on 36-40-44-44 sts. Work rib same as for body. Change to needles size 3 mm, and white yarn. Place a marker mid under arm (beg of rnd). Cont working in St st. Inc 1 st both sides of the marker approx. every 1 cm (0.4 in) until you have 68-72-84-88 sts on a rnd. When work measures the given length, or as desired, bind off 6-6-8-8 sts mid under arm (3-3-4-4 sts both sides of the marker). Cont working back and forth. Bind off at each edge every 2nd row 1x2, and 1x1 st. Bind off rem sts. Work same for the other sleeve.

Finishing

Set shoulder bands (buttonhole band on top) on top of each other, and sew tog at armhole edges.

Neck band, front

Beg from left front shoulder (RS), using needles size 2½ mm and red yarn, pick or knit up 42-44-48-52 sts. Purl 1 row. Work 2 rows in K1,P1 rib. Change to light grey yarn, and work 5 rows in light grey yarn. Bind off in rib.

Neck band, back

Beg from right back shoulder (RS), using needles size 2½ mm and red yarn, knit or pick up 8 sts, knit sts from holder, and pick or knit up 8 sts from left side. Purl 1 row, adjusting evenly across the row the number of sts to be 38-38-46-46 sts.

Work same for the neck band as front.

Sew on sleeves. Sew buttons on each shoulder, and 1 snap fastener at each side of the neck band.

Weave in all ends on WS.

PANTS

Beg from upper edge. Using a short circular needle size 2½ mm and light grey yarn, cast on 124-136-144-160 sts. Work in rnds 6-7-8-8 cm (2.4-2.8-3.1-3.1 in) in K2,P2 rib. Change to needles size 3 mm. Knit 1 rnd, and inc evenly across the rnd 20 sts (same for all sizes) = 144-156-164-180 sts. Place markers each side 72-78-82-90 sts for both back and front, and mid front and back (= 35-38-40-44 sts both sides of the marker). Cont working in St st. Work short rows to rise the back of the pants: Beg mid back. K6, turn, P12, turn, and cont working in the same way with 6 more sts before turning, altog. 10-12-12-12-14 times = 5-6-6-6-7 times for each side. Cont working in St st over all sts until work measures approx. 25-27-29-31 cm (9.8-10.6-11.4-12.2 in), measured from cast-on edge. Inc 1 st both sides of mid front and back markers: 3 times every 2nd rnd, and 2 times every rnd = 164-176-184-200 sts. Divide work mid front and back = 82-88-92-100 sts for each leg.

Leg

Cont working in rnds in St st. Place a marker at the inner seam (beg of rnd). Dec 1 st both sides of the marker approx. every 2-1½-2½-2½ cm (0.8-0.6-1-1 in) until 72 sts rem (same for all sizes). When leg measures approx. 10-14-21-31 cm (4-5.5-8.3-12.2 in) (or 9 cm (3.5 in) less than desired length), work patt as charted. When patt is ready, knit 1 rnd adjusting evenly across the rnd the number of sts to be 44-48-48-48 sts. Change to needles size 2½ mm and red yarn. Knit 1 rnd, 2 rnds in K2,P2 rib. Change to white yarn, and work 5 rnds in rib. Bind off in rib.

Work same for the other leg.

Weave in all ends on WS.

Finishing:

Sew crotch seam. Fold waist rib in double, and sew on WS. Thread in elastic.

HAT

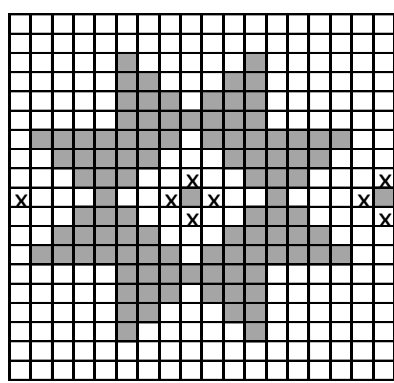
Circumference: 38 41 43 cm
15 16.1 16.9 in

Using needles size 2½ mm and white yarn, cast on 106-114-120 sts. Work in rnds 2 cm (0.8 in) in K1,P1 rib. Change to light grey yarn, and work 1 cm (0.4 in) in rib. Change to needles size 3 mm, and red yarn. Knit 1 rnd, adjusting evenly across the rnd the number of sts to be 108-126-126 sts. Cont working in patt as charted. When patt is ready, cont working in St st with red yarn until work measures 14-15-16 cm (5.5-5.9-6.3 in). Beg crown dec: *K4, K2tog*, rep *-* across the rnd. Work 2 rnds without dec. Next rnd: *K3, K2tog*, rep *-* across the rnd. Work 2 rnds without dec. Rep dec every 3rd rnd with 1 st less between dec until 18-21-21 sts rem. Next rnd: Knit all sts tog in pairs. Break yarn, thread through rem sts, pull tightly, and weave in on WS. Weave in all ends on WS.

SOCKS

Using needles size 2½ mm and white yarn, cast on 36-40-44-48 sts. Work in rnds approx. 3-4-5-5 cm (1.2-1.6-2-2 in) in K1.P1 rib. Change to light grey, and work 1 cm (0.4 in) in rib, and knit 1 rnd. Change to needles size 3 mm, and red yarn. Cont working in St st until work measures 8-8-9-9 cm (3.1-3.1-3.5-3.5 in). Work for heel over mid back 18-20-22-24 sts. Work back and forth 20-22-24-26 rows in St st. Beg dec from RS: Knit until 7-8-8-9 sts rem, sl 1 st, K1, pssso, turn, purl until 7-8-8-9 sts rem, P2tog. Turn, knit until 6-7-7-8 sts rem, sl 1 st, K1, pssso, turn, purl until 6-7-7-8 sts rem, P2tog. Turn, and cont working in the same way with 1 st less before each dec until 6-6-8-8 sts rem. Cont as foll: K6-6-8-8 heel sts, pick up along the side of the heel 10-11-12-13 sts, knit sts from the top of the sock, pick up 10-11-12-13 sts along the other side of the heel= 44-48-54-58 sts on a rnd. Place markers each side. Beg rnd mid under foot, and work in rnds in St st (Ktbl picked-up sts), and dec 1 st before first sidemarker, and 1 st after second sidemarker every 2nd rnd until 36-40-44-48 sts rem. Cont working in St st until foot measures 8-9-10-12 cm (3.1-3.5-4-4.7 in), or as desired before the dec. Beg dec: Dec 1 st beg of each dpn, 4 times every 2nd rnd, and then every rnd until 8 sts rem. Break yarn, and thread through rem sts, pull tightly, and weave in on WS. Weave in all ends on WS. Work same for the other sock.

PATTERN over 18 sts



repeat
↑ mid front, hat ↑ beg here

- = white (sweater), grey (pants), red (hat)
- = grey (sweater), white (pants and hat)
- ⊗ = red (sweater and pants), grey (hat)