

Viking Naturgarn

1102-1

Viking NATURGARN (100% wool), 50 g ball

Alternative yarn: Viking ALPACA SUPERFINE (100% alpaca), 50 g ball or Viking BALDER (100% superwash wool), 100 g skein

Size	Woman
Circumference	50 cm 19.7 in

Materials

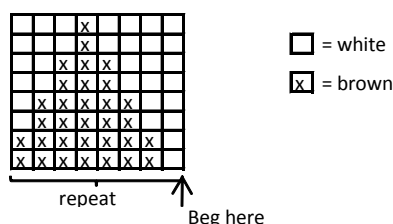
White, 600	1 ball
Violet, 667	1 ball
Brown, 618	2 balls
Pink, 665	1 all

Circular needle size 7 mm – US 10½ or 11 - UK/Canadian 2

Gauge: 12 sts = approx. 10 cm (4 in) over St st using needles size 7 mm. Check your gauge to ensure success.

HAT

Using needles size 7 mm and light violet yarn, cast on 64 sts. K 1 rnd. Cont working in K1,P1 rib until violet yarn finishes. Change to brown, and cont working in rib until work measures approx.30 cm (11.8 in). Work patt as charted, cont working in rib at the same time. When patt is ready, work 8 cm (3.1 in) in white yarn. Break yarn, and thread through sts, pull tightly. Weave in ends on WS. Make a pompon using pink yarn, and fasten it on top.



Viking Naturgarn

1102-2

Viking NATURGARN (100% wool), 50 g ball

Alternative yarn: Viking ALPACA SUPERFINE (100% alpaca), 50 g ball or Viking BALDER (100% superwash wool), 100 g skein

Size	Woman
Circumference	50 cm 19.7 in

Materials

Grey, 615	2 balls
-----------	---------

Circular needle and double pointed needles size 7 mm – US 10½ or 11 -UK/Canadian 2

Gauge: 12 sts = approx. 10 cm (4 in) over St st using needles size 7 mm. Check your gauge to ensure success.

HAT

Using needles size 7 mm, cast on 60 sts. Work 7 rnds in K3,P3 rib. Next rnd: *S1 3 sts on cn, hold to back,P3, K sts from cn*, rep *-* across the rnd. Work 33 rnds in K3,P3 rib, or until work measures approx.20 cm (7.9 in). Next rnd: *K2tog, K1*, rep *-* across the rnd. Next rnd: K all sts tog in pairs. Break yarn, and thread through rem sts. Pull tightly and weave in all ends on WS.

Viking Naturgarn

1102-3

Viking NATURGARN (100% wool), 50 g ball

Alternative yarn: Viking ALPACA SUPERFINE (100% alpaca), 50 g ball or Viking BALDER (100% superwash wool), 100 g skein

Size	Woman
Circumference	50 cm 19.7 in

Materials

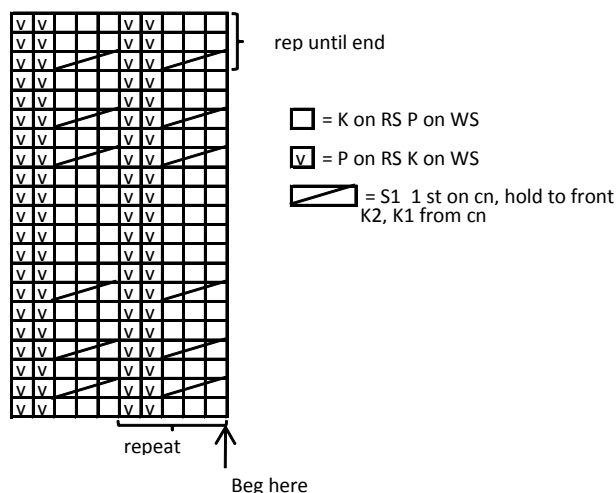
Pink, 665	2 balls
-----------	---------

Circular needle and double pointed needles size 7 mm – US 10½ or 11 - UK/Canadian 2

Gauge: 12 sts = approx. 10 cm (4 in) over St st using needles size 7 mm. Check your gauge to ensure success.

HAT

Using needles size 7 mm, cast on 60 sts. Work 5 rnds in K3,P2 rib. Cont working in patt as charted until work measures approx. 22 cm (8.7 in). Dec for crown: *k2tog, K2*, rep across the rnd. K 1 rnd without dec. Next rnd: *K2tog, K1*, rep *-* across the rnd. K 1 rnd. Next rnd: K all sts tog in pairs = 15 sts rem. Break yarn, and thread through rem sts. Pull tightly, and weave in all ends on WS.



Viking Naturgarn

1102-4

Viking NATURGARN (100% wool), 50 g ball

Alternative yarn: Viking ALPACA SUPERFINE (100% alpaca), 50 g ball or Viking BALDER (100% superwash wool), 100 g skein

Size	Woman
Circumference	50 cm 19.7 in

Materials	
White, 600	2 balls
Brown, 618	3 balls

Circular needle and double pointed needles size 7 mm – US 10½ or 11 - UK/Canadian 2

Crochet hook size 6 mm – US J/10 - UK/Canadian 4

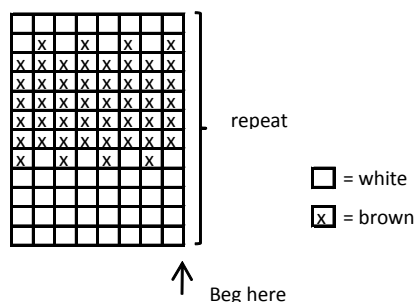
Gauge: 12 sts = approx. 10 cm (4 in) over St st using needles size 7 mm. Check your gauge to ensure success.

HAT

Using needles size 7 mm and white yarn, cast on 60 sts. Work in patt as charted, rep patt 3 times altog. When work measures approx. 20 cm (7.9 in), break yarn, and thread through rem sts. Pull tightly, and weave in all ends on WS.

Brim, front: Using brown yarn, crochet 20 sc along mid front. Work altog. 7 rows in sc. Fold brim on RS, and fasten with few small sts each side.

Back border and ear flaps: Beg from one side, next to front brim. Using brown yarn, work 1 rnd in sc across the sides and back until other side of the brim (= approx. 40 sc). Work back and forth altog 4 rows in sc. Change to white yarn, and work 4 more rows. Place a marker mid back. Place markers 6 sts from mid back marker for the ear flaps. Work ear flaps over next 14 sts, 4 rows in brown and 4 rows in white. Work same for the other ear flap. Work 1 row sc across ear flaps and mid back. Make a pompon using brown yarn.



Viking Naturgarn

1102-5

Viking NATURGARN (100% wool), 50 g ball

Alternative yarn: Viking ALPACA SUPERFINE (100% alpaca), 50 g ball or Viking BALDER (100% superwash wool), 100 g skein

Size	Woman
Circumference	50 cm 19.7 in

Materials	
Grey, 615	2 balls
Pink, 665	1 ball

Circular needle and double pointed needles size 7 mm – US 10½ or 11 - UK/Canadian 2

Gauge: 12 sts = approx. 10 cm (4 in) over St st using needles size 7 mm. Check your gauge to ensure success.

HAT

Using needles size 7 mm and pink yarn, cast on 60 sts. Work 12 cm (4.7 in) in K1tbl,P1 rib (or work until pink ball is finished). Change to grey yarn, and work in St st (= K all sts tbl). Dec for crown: *K4, K2tog*, rep *-* across the rnd. K 1 rnd without dec. Rep dec every 2nd rnd with 1 st less between dec each time until 20 sts rem. Next rnd: K all sts tog in pairs. Break yarn, and thread through rem sts. Pull tightly, and weave in all ends on WS. Make a pompon using grey yarn, and fasten it on top.

Viking Naturgarn

1102-6

Viking NATURGARN (100% wool), 50 g ball

Alternative yarn: Viking ALPACA SUPERFINE (100% alpaca), 50 g ball or Viking BALDER (100% superwash wool), 100 g skein

Size	Woman
Circumference	50 cm 19.7 in

Materials	
Dark Violet, 668	2 balls
Multicolor, 656	1ball

Circular needle and double pointed needles size 7 mm – US 10½ or 11 - UK/Canadian 2

Gauge: 12 sts = approx. 10 cm (4 in) over St st using needles size 7 mm. Check your gauge to ensure success.

HAT

Using needles size 7 mm and violet yarn, cast on 60 sts. Work 6 cm (2.4 in) in K2,P2 rib. Cont working in St st until work measures approx. 22 cm (8.7 in). Dec for crown: K all sts tog in pairs until 15 sts rem. Break yarn, and thread through rem sts. Pull tightly, and weave in all ends on WS. Make a pompon using multiclr yarn and fasten it on top.

Viking Naturgarn

1102-7

Viking NATURGARN (100% wool), 50 g ball

Alternative yarn: Viking ALPACA SUPERFINE (100% alpaca), 50 g ball or Viking BALDER (100% superwash wool), 100 g skein

Size	Woman
Circumference	50 cm 19.7 in

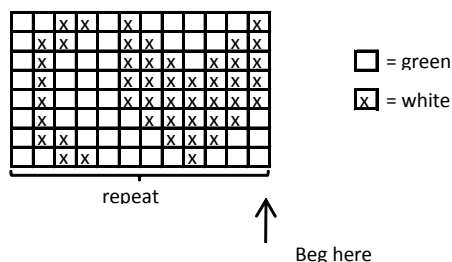
Materials	
White, 600	1 balls
Green, 632	2 balls

Circular needle and double pointed needles size 7 mm – US 10½ or 11 - UK/Canadian 2

Gauge: 12 sts = approx. 10 cm (4 in) over St st using needles size 7 mm. Check your gauge to ensure success.

HAT

Using needles size 7 mm and white yarn, cast on 60 sts. Work 4 cm (1.6 in) in K1,P1 rib. Change to green yarn, and work 2 cm (0.8 in) in St st. Cont working in patt as charted. After patt is ready, work 5 cm (2 in) in St st. Dec for crown: *K4, K2tog*, rep *-* across the rnd. K 1 rnd without dec. Rep dec every 2nd rnd with 1 st less between each dec until 20 sts rem. Next rnd: K all sts tog in pairs. Break yarn, and thread through rem sts. Pull tightly, and weave in all ends on WS.



Viking Naturgarn

1102-8

Viking NATURGARN (100% wool), 50 g ball

Alternative yarn: Viking ALPACA SUPERFINE (100% alpaca), 50 g ball or Viking BALDER (100% superwash wool), 100 g skein

Size	Woman
Circumference	50cm 19.7in

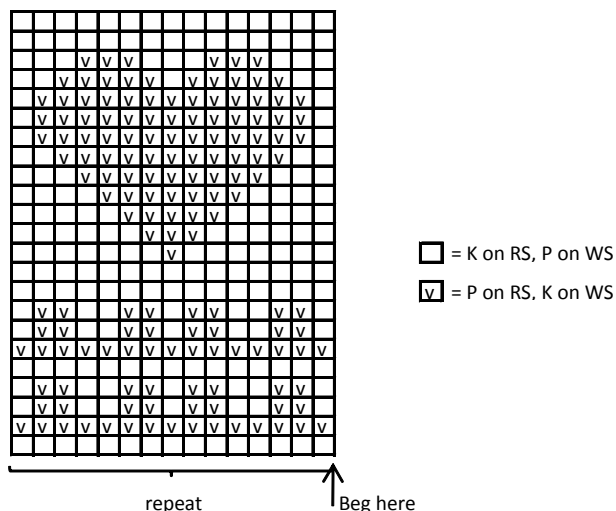
Materials	
Red, 650	4 balls

Circular needle and double pointed needles size 7 mm – US 10½ or 11 - UK/Canadian 2

Gauge: 12 sts = approx. 10 cm (4 in) over St st using needles size 7 mm. Check your gauge to ensure success.

HAT

Using needles size 7 mm, cast on 60 sts. Work in patt as charted. When patt is ready, cont as foll. First rnd: *K4, P1*, rep *-* across the rnd. Next rnd: *K3, P1, K1*, rep *-* across the rnd. Next rnd: *K2, P1, K2*, rep *-* across the rnd. Cont working in the same way, with the stripes curving in a spiral until work measures approx. 11 cm (4.3 in). Place a marker until work measures approx. 11 cm (4.3 in). Place a marker every 6th rnd until 28 sts rem. Break yarn, and thread through rem sts. Pull tightly, and weave in all ends on WS. If desired, you can make a pompon, and fasten it on top.



Viking Naturgarn

1102-9

Viking NATURGARN (100% wool), 50 g ball

Alternative yarn: Viking ALPACA SUPERFINE (100% alpaca), 50 g ball or Viking BALDER (100% superwash wool), 100 g skein

Size Woman
Circumference 50cm
19.7in

Materials

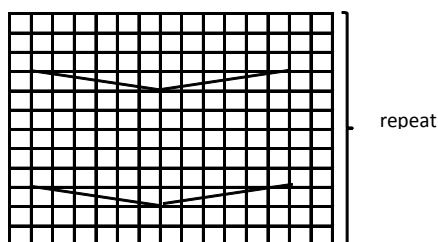
White, 600 2 balls
Violet, 668 1 ball

Circular needle and double pointed needles size 7 mm – US 10½ or 11 - UK/Canadian 2

Gauge: 12 sts = approx. 10 cm (4 in) over St st using needles size 7 mm. Check your gauge to ensure success.

HAT

Beg with cabled border: Using needles size 7 mm and violet yarn, cast on 15 sts. Work in cable patt as charted until work measures approx. 53 cm (20.9 in). Bind off. Join into a ring by sewing the short edges. Turn work inside out. Using circular needle size 7 mm and white yarn, pick up 60 sts along cable border edge (Note! Cable border will be folded on RS eventually). Work in rnds in St st until work measures approx. 30 cm (11.8 in), or desired length. K all sts tog in pairs. When patt is ready, cont as foll. Break yarn, and thread through rem sts. Pull tightly, and weave in all ends on WS. Make a pompon using violet yarn, and fasten it on top, if desired.



↑
Beg here
= pick up sts fom here for knitting rest of the hat

□ = K on RS, P on WS

▤ = Sl 3 sts on cn, hold to back, K3, K3 from cn

▥ = Sl 3 sts on cn, hold to front, K3, K3 from cn

Viking Balder

1102-10

Viking BALDER (100% superwash wool), 100 g skein

Alternative yarn: Viking ALPACA SUPERFINE (100% alpaca), 50 g ball or Viking NATURGARN (100% wool), 50 g ball

Size Woman
Circumference 50cm
19.7in

Materials

White, 400 1skein
Multicolor, 429 1skein

Circular needle and double pointed needles size 7 mm – US 10½ or 11 - UK/Canadian 2

Gauge: 12 sts = approx. 10 cm (4 in) over St st using needles size 7 mm. Check your gauge to ensure success.

HAT

Using needles size 7 mm and multicl yarn, cast on 60 sts. K 1 rnd. Work 15 cm (5.9 in) in K1tbl, P1 rib. Turn work inside out. K 1 rnd. Cont working in K1tbl, P1 rib until work measures approx. 23 cm (9.1 in), measured from folding. Next rnd: K all sts tog in pairs. Break yarn, and thread through rem sts. Pull tightly, and weave in all ends on WS. Make a pompon using multicl yarn, and fasten it on top.

Viking Naturgarn

1102-11

Viking NATURGARN (100% wool), 50 g ball

Alternative yarn: Viking ALPACA SUPERFINE (100% alpaca), 50 g ball or Viking BALDER (100% superwash wool), 100 g skein

Size Woman
Circumference 50cm
19.7in

Materials

White, 600 2 balls
Petrol, 628 1 ball

Circular needle and double pointed needles size 7 mm – US 10½ or 11 - UK/Canadian 2

Gauge: 12 sts = approx. 10 cm (4 in) over St st using needles size 7 mm. Check your gauge to ensure success.

HAT

Using needles size 7 mm and white yarn, cast on 60 sts. Work 3 cm (1.2 in) in K1, P1 rib. Cont working in St st until work measures approx. 22 cm (8.7 in). Dec for crown: *K4, K2tog*, rep *-* across the rnd. Rep dec every 2nd rnd with 1 st less between each dec until 20 sts rem. Break yarn, and thread through rem sts. Pull tightly, and weave in all ends on WS. Make a pompon using petrol yarn, and fasten it on top, if desired.

Viking Naturgarn 1102-12

Viking **NATURGARN** (100% wool), 50 g ball

Alternative yarn: Viking **ALPACA SUPERFINE** (100% alpaca), 50 g ball or Viking **BALDER** (100% superwash wool), 100 g skein

Size	Woman
Circumference	50cm 19.7in

Materials

Violet, 668	1ball
Brown, 618	1ball
Light Violet, 667	1ball

Circular needle and double pointed needles size 7 mm – US
10½ or 11 - UK/Canadian 2

Gauge: 12 sts = approx. 10 cm (4 in) over St st using needles
size 7 mm. Check your gauge to ensure success.

Note! Read through the instruction before getting started

HAT

Using needles size 7 mm and brown yarn, cast on 60 sts. Work
7 rnds in K2,P2 rib. Cont working in St st with stripes: 2 rnds
in brown, 4 rnds in dark violet, 3 rnds in light violet, 5 rnds in
brown, 4 rnds in dark violet, 3 rnds in light violet,
5 rnds in brown - first rnd of last stripe: *K10, K2tog*, rep *-*
across the rnd = dec 5 sts. Rep dec every rnd with 1 st less
between each dec until 8 sts rem. **Note!** Cont working in
stripes after the brown stripe as foll: 4 rnds in dark violet, 3
rnds in light violet. Break yarn, and thread through rem sts.
Pull tightly, and weave in all ends on WS.