

Viking Bjørk

Sweater, cardigan, trousers, hat and socks

1005-1

Viking **BJØRK**, 90% cotton, 10% superwash merino wool, Viking **ALPACA SILK**, 50% alpaca, 50% silk, 50 g ball

Size	3/6m	9m	12/18m	2	4	yrs
SWEATER						
Chest	52	58	62	67	72	cm
	20.5	22.8	24.4	26.4	28.3	in
Length	24	29	33	36	40	cm
	9.4	11.4	13	14.2	15.7	in
Sleeve length	20	22	25	28	31	cm
	7.9	8.7	9.8	11	12.2	in
Leg length	20	21	25	29	35	cm
	7.9	9.1	9.8	11.4	13.8	in

Materials

SWEATER AND HAT

White, 500	3	3	4	4	5	balls
Dark Violet, 568	1	1	1	1	1	ball
Light Violet, 567	1	1	1	1	1	ball
Green, 537	1	1	1	1	1	ball
Beige, 507	1	1	1	1	1	ball

TROUSERS

Light Violet, 567	2	3	3	4	5	balls
-------------------	---	---	---	---	---	-------

CARDIGAN AND SOCKS

Dark Violet, 568	2	3	3	4	5	balls
Light Violet, 567	2	2	2	3	3	balls
White, 500	1	1	1	2	2	balls

Double pointed needles and circular needle size 3 mm – US 2 or 3 – UK/Canadian 11. Crochet hook size 2½ mm – US B/1 or C/2 – UK/Canadian 12.

1 small button for the sweater, and plain sequins for embellishment.

1 zipper for the cardigan (measure from the ready garment)

Gauge: 25 sts = approx. 10 cm/4 in over St st, using needles size 3 mm. Check your tension to ensure success.

SWEATER

Using circular needle size 3 mm and dark violet yarn, cast on 132-144-156-168-180 sts. Work 1 rnd in K1,P1 rib. Change to light violet yarn, and work 2 rnds in rib. Place markers each side, 67-73-79-85-91 sts for front, and 65-71-77-83-89 sts for back. Cont working in St st and patt I as charted, after that rep patt II as charted until work measures 12-16-19-21-24 cm/4.7-6.3-7.5-8.3-9.4 in. Bind off at each edge 10 sts (5 sts on both sides of the markers). Put the piece aside.

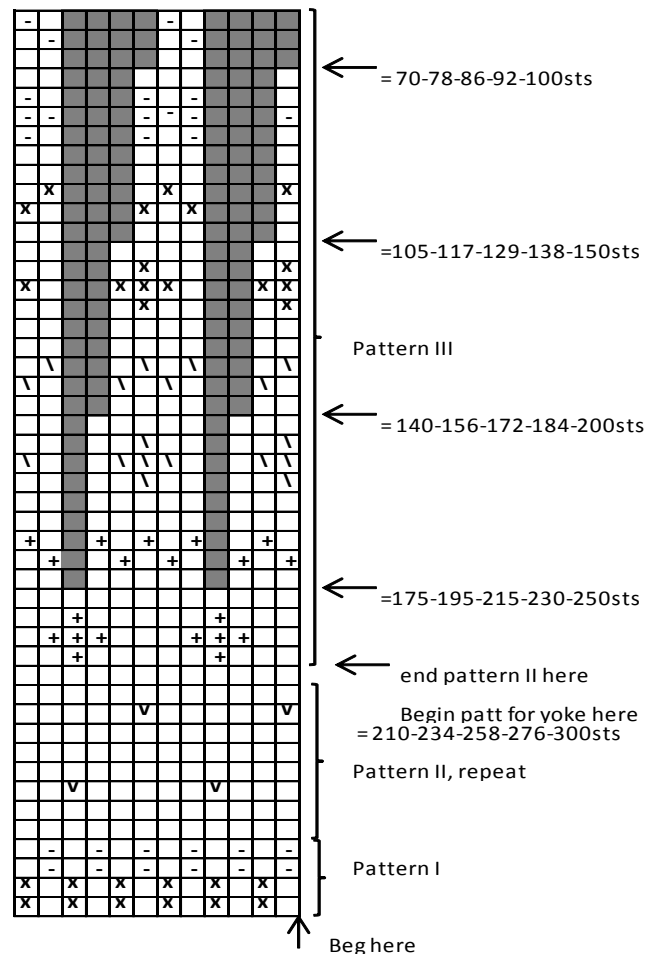
Sleeves: Using dpn size 3 mm and dark violet yarn, cast on 40-42-44-46-46 sts. Work rib same as for body. K 1 rnd, and adjust evenly across the rnd the number of sts to be 47-49-51-53-53 sts. Cont working in St st and patt I as charted, after that rep patt II. Place marker mid under arm, and inc 1 st on both side of the marker approx. every 2-2-2-2-2 cm/0.8-0.8-0.8-0.8-

0.8 in, until you have 61-65-71-75-81 sts on a rnd (work inc sts in patt II). When work measures approx. 20-22-25-28-31 cm/7.9-8.7-9.8-11-12.2 in (or desired length), bind off 10 mid sts under arm (5 sts on both sides of the marker). Put the piece aside, and work same for the other sleeve.

Yoke: Slip sleeves in (= where the sts were bound off for armholes) on the same circular needle as body piece = 214-234-258-278-302 sts. Adjust the number of sts evenly across to be 210-234-258-276-300 sts. Beg with 2-2-4-6-6 rnds in white yarn. Cont working in patt III as charted. Ending the chart, cont working in St st with white yarn, until work measures 24-29-33-36-40 cm/9.4-11.4-13-14.2-15.7 in.

Neck border: Beg mid back, and work back and forth. Adjust evenly across the 1st row the number of sts to be 68-72-76-78-80 sts. Cont working in K1,P1 rib, until the border measures approx. 2 cm/0.8 in. Change to dark violet yarn and work 1 row in rib. Bind off in rib. Crochet a buttonhole loop, and sew on the button.

Sew underarm seams, and weave in ends on WS.



- = white (K on RS, P on WS)
- ◻ = white (P on RS, K on WS)
- ⊗ = green
- ◻ = beige
- ⊕ = dark violet
- ◻ = light violet

TROUSERS

Size	3/6	9	12/18	months	2	4	yrs
Leg	18	21	25		30	35	cm
length	7.1	8.5	9.8		11.8	13.8	in

Beg from the waist. Using circular needle size 3 mm and light violet yarn, cast on 120-120-130-140-140 sts. Work 5 cm/2 in, in K1,P1 rib. Place markers each side, 60-60-65-70-70 sts for both front and back. Work short rows to rise the back of the trousers: Beg from mid back, K7-7-8-8-8, turn P14-14-16-16-16, turn. Cont working in the same way, each time 7-7-8-8-8 sts more, 4 times more at each side. K 1 rnd over all sts. Cont working in St st until work measures 17-18-19-21-22 cm/6.7-7.1-7.5-8.3-8.7 in (measured from cast-on edge). Place markers mid front and back. Inc 1 st on both sides of the mid markers every 2nd rnd altog 7 times = 148-148-158-168-168 sts. Divide the work in two parts for the legs, 74-74-79-84-84 sts for each leg. Finish each leg separately. Cont working in St st, and place a marker on the inner seam. Dec 1 st on both sides of the marker approx. every 1½-2-2-2-3 cm/0.6-0.8-0.8-0.8-1.2 in until 56-58-61-62-64 sts rem. When work measures approx. 3 cm/1.2 in less than total length, work 3 cm/1.2 in, in K1,P1 rib. Bind off.

Work same for the other leg. Sew the crotch seam, and weave in all ends on WS.

HAT (circumference 38-43-48 cm/15-16.9-18.9 in)

Using needles size 3 mm and dark violet, cast on 96-108-120 sts. Work 1 rnd in K1,P1 rib. Change to light violet and work 2 rnds in rib. Change to white yarn, and work in rib, until work measures 3 cm/1.2 in. Work 1 rnd in St st. Work patt I as charted, 2 rnds in white yarn, and cont rep patt II as charted. When work measures approx. 15-16-17 cm/5.9-6.3-6.7 in measured from the cast-on edge, beg dec for crown:

K4,K2tog, rep*-* across the rnd. Work 2 rnds without dec. Rep dec every 3rd rnd with 1 st less between the dec than prev rnd until 32-36-40 sts rem. Next rnd: K all sts tog in pairs = 16-18-20 sts. Break yarn, and thread through rem sts. Weave in ends on WS.

CARDIGAN WITH HOOD

Size	0/3	6/9	12	18	months	2/4	yrs
Chest	48	54	57	60		64	cm
	18.9	21.3	22.4	23.6		25.2	in
Length	23	27	30	33		36	cm
	9.1	10.6	11.8	13		14.2	in
Sleeve	17	21	24	26		28	cm
length	6.7	8.3	9.4	10.2		11	in

Patt:

1st row (= WS): Knit.

2nd row (= RS):*P1, K1 through prev row's st*, rep *-* across the row, end with P1.

Rep 1st-2nd rows, and stripes as foll:

8 rows in dark violet – 6 rows in light violet – 4 rows in white – 6 rows in light violet, rep *-*.

CARDIGAN

Using needles size 3 mm and dark violet yarn, cast on 121-135-143-151-161 sts. Cont working in patt with stripes until work measures approx. 13-16-18-20-22 cm/5.1-6.3-7.1-7.9-8.7 in. Divide work into three parts, 61-67-71-75-81 sts for the

back, and 30-34-36-38-40 sts for both fronts. Finish back and fronts separately.

Back: Cont working back and forth in patt with stripes, until work measures 23-27-30-33-36 cm/9.1-10.6-11.8-13-14.2 in, and armhole measures approx. 10-11-12-13-14 cm/4-4.3-4.7-5.1-5.5 in. Bind off.

Front: Work same as for back. When work measures approx. 19-23-25-28-31 cm/7.5-9.1-9.8-11-12.2 in, bind off first 7-8-9-10-11 sts for neck edge. Bind off at neck edge every 2nd row 1x3 sts, 1x2 sts and 1x1 st. Bind off sts when work measures same as back. Work same for the other front, rev all shaping.

Sleeves: Using needles size 3 mm and dark violet yarn, cast on 33-35-39-41-43 sts. Work back and forth 2 cm/0.8 in, in K1,P1 rib. Cont working in patt with stripes (dark violet rib corresponds first dark violet stripe). Inc 1 st at each edge approx. every 1½-1½-2-2-2 cm/0.6-0.6-0.8-0.8-0.8 in, until you have 51-55-59-63-67 sts on a row. When work measures 17-21-24-26-28 cm/6.7-8.3-9.4-10.2-11 in, or desired length, bind off.

Hood: Using needles size 3 mm, cast on 85-89-93-97-101 sts. Work in patt with stripes. When work measures approx. 3-4-4-5-5 cm/1.2-1.4-1.4-2-2 in, dec 1 st at each edge every 4th row 6 times. When work measures 14-15-16-17-18 cm/5.5-5.9-6.3-6.7-7.1 in, bind off beg of each row: 7-8-8-9-9 sts 4 times at both edge. Bind off rem 17-13-17-13-17 sts. Sew mid back seam, and sew on the hood along neck edge.

Finishing: Front borders: Using crochet hook size 3 mm, work 2 rows sc along both front edges. Sew on the zipper.

SOCKS

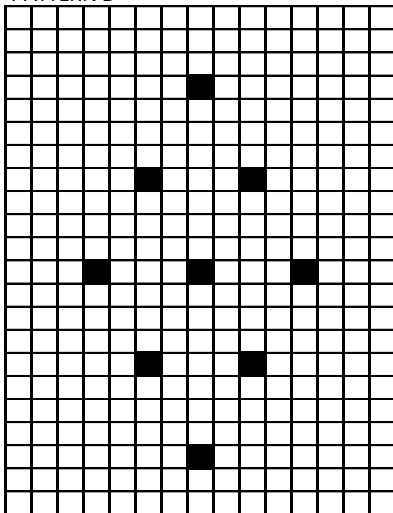
Using needles size 3 mm and dark violet yarn, cast on 35-37-39 sts. Work 8 rows in K1,P1 rib. Cont working in patt with stripes. When work measures 5 cm/2 in measured from cast-on edge, cont working over mid 9-9-11 sts until work measures approx. 5-6-6 cm/2-2.4-2.4 in (or desired length). Slip sts on holder. Divide sts on 3 dpn, and pick along both sides of the mid piece approx. 11-13-13 sts = 57-63-67 sts. Work 8-10-12 rows in Garter St. Dec as foll: Beg from RS,K24-27-28, K2tog, K5-5-7, K2tog, K24-27-28. WS: K all sts. Next RS row: Rep with 3-3-5 sts mid front between dec. Cont dec every 2nd row until 3 sts rem mid front. Last dec over 3 mid sts: S11, K2tog, pssso. Bind off sts. Sew sole and mid back seam. Weave in ends on WS.

PATTERN C



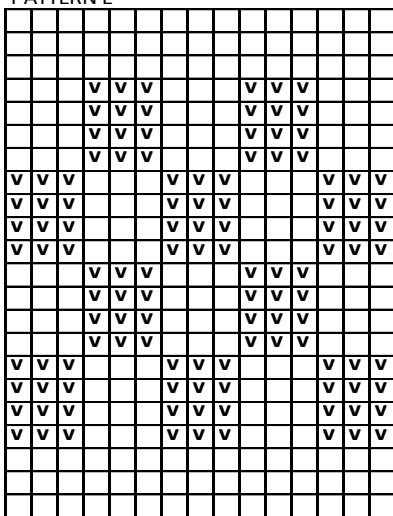
Beg her

PATTERN D



■ = 1 bobble: K same st 5 times, K1tfl, K1tbl, K1tfl, K1tbl, K1tfl. Work 3 rows back and forth in St st. K5tog.

PATTERN E



Beg here

□ = K on RS, P on WS

∇ = P on RS, K on WS

TROUSERS

Beg from the waist. Using circular needle size 3 mm, cast on 120-120-130-140-140 sts. Work 6 cm/2.4 in, in patt C (Seed st). Place markers each side, 60-60-65-70-70 sts for both front and back. Work short rows to rise the back of the trousers: Beg from mid back, K7-7-8-8-8, turn P14-14-16-16-16, turn. Cont working in the same way, each time 7-7-8-8-8 sts more, 4 times more at each side. K 1 rnd over all sts. Cont working in St st until work measures 17-19-20-21-22 cm/6.7-7.5-7.9-8.3-8.7 in (measured from cast-on edge), or desired length. Place markers mid front and back. Inc 1 st on both sides of the mid

markers every 2nd rnd altog 7 times = 148-148-158-168-168 sts. Divide the work in two parts for the legs, 74-74-79-84-84 sts for each leg. Finish each leg separately. Cont working in St st, and place a marker on the inner seam. Dec 1 st on both sides of the marker approx. every 1½-2-2-2-2 cm/0.6-0.8-0.8-0.8-0.8 in until 56-58-61-62-64 sts rem. When work measures approx. 3 cm/1.2 in less than total length, K 1 rnd and adjust the number of sts evenly across the rnd to be 50-52-54-56-58 sts. Work 3 cm/1.2 in, in patt C. Bind off loosely. Work same for the other leg.

BLANKET (50x70 cm/19.7x27.6 in)

Using needles size 3 mm, cast on 125 sts. Work 3 cm/1.2 in, in Seed st. P1 row (= WS), and adjust the number of sts evenly across the row to be 174 sts. Cont working in patt as foll: Beg with RS row, patt C over 7 sts, rep patt report 1 over the next 160 sts (rep *-* twice across the row), end with patt A + patt C over 7 sts. Rep reports 1-6 until blanket measures approx. 67 cm/26.4 in (end with a complete square). Adjust the number of sts evenly across the row to be 125 sts. Work 3 cm/1.2 in, in Seed st. Bind off. Crochet a picot edge around the blanket.

CARDIGAN WITH HOOD

Size	3/6	9	12/18	months	2	4	yrs
Chest	51	55	60		64	68	cm
	20.1	21.7	23.6		25.2	26.8	in
Length	25	27	33		36	40	cm
	9.8	10.6	13		14.2	15.7	in
Sleeve length	22	24	26		30	33	cm
	8.7	9.4	10.2		11.8	13	in

Gauge: 25 sts = approx. 10 cm/4 in over St st, using needles size 3 mm. Check your tension to ensure success.

Back: Using needles size 3 mm, cast on 60-64-72-76-80 sts. Work 3 cm/1.2 in, in K2,P2 rib. P 1 row (= WS), and adjust the number of sts evenly across the row to be 74-82-86-90-98 sts. Beg the patt as foll:

K4, P4, K4 = **3/6 months**

P4, K4, P4, K4 = **9 months**

K2, P4, K4, P4, K4 = **12/18 months**

K4, P4, K4, P4, K4 = **2 yrs**

P4, K4, P4, K4, P4, K4 = **4 yrs**

All sizes: Work cable patt as charted over next 50 sts, end as beg of the row, but work sts in rev order. Cont working back and forth as established until work measures 25-27-33-36-40 cm/9.8-10.6-13-14.2-15.7 in. Bind off.

Right front: Using needles size 3 mm, cast on 32-32-36-40-44 sts. Work approx. 3 cm/1.2 in, in K2,P2 rib. P 1 row (= WS) and adjust the number of sts evenly across the row to be 48-51-53-56-58 sts. Beg from RS, work 6 sts in Garter st (= front edge), cable patt as charted over next 37 sts, and end as foll:

K4, P1 = **3/6 months**

K4, P4 = **9 months**

K4, P4, K2 = **12/18 months**

K4, P4, K4, P1 = **2 yrs**

K4, P4, K4, P3 = **4 yrs**

Cont working back and forth as established until work measures 21-22-28-31-34 cm/8.3-8.7-11-12.213.4 in, bind off first 13-15-17-19-19 sts for neck edge. Bind off at neck edge every 2nd row 1x5 sts, 1x3 sts and 1x2 and 1x1 sts (same for all sizes). Bind off sts when work measures same as back. Work same for left front, rev all shaping.

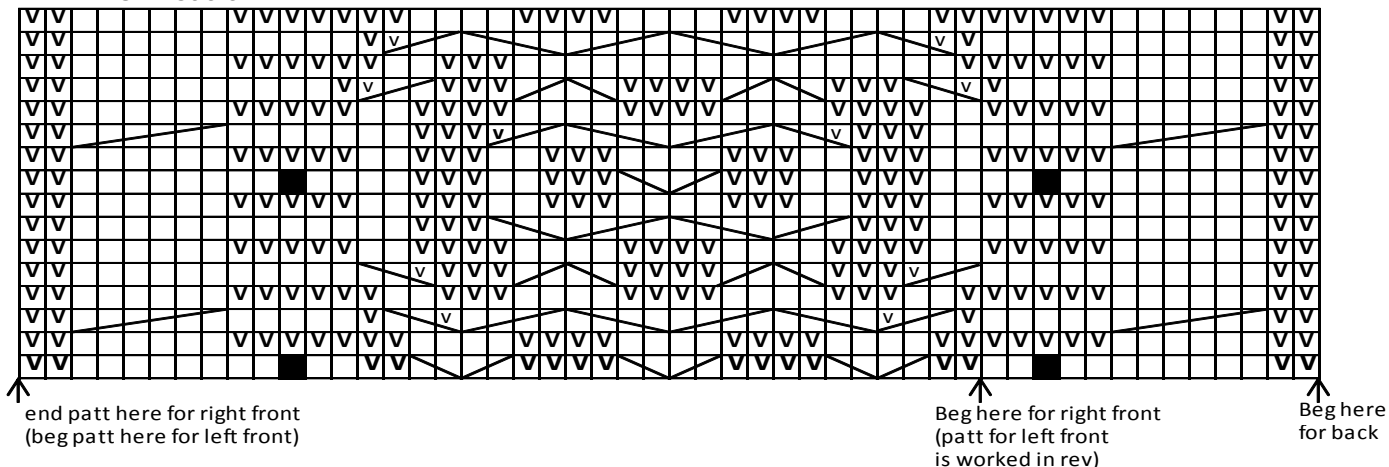
Sleeves: Using needles size 3 mm, cast on 52-60-60-68-68 sts. every 2½-4-3-4½-2½ cm/1-1.6-1.2-1.8-1 in, until you have 66-70-76-80-90 sts on a row. Work back and forth in K4,P4 rib. Inc 1 st at each edge approx. 22-24-26-30-33 cm/8.7-9.4-10.2-11.8-13 in, or desired length (Note! Approx. 3-4 cm/1.2-1.6 in will be turned on RS), bind off.

Finishing: Sew shoulder and side seams.

Hood: Using needles size 3 mm, pick or knit up along the neck edge approx. 100-100-108-108-116 sts. Work back and forth K4,P4 rib inside 4 sts at both edges (= worked in Garter st). When work measures approx. 19-21-24-26-28 cm/7.5-8.3-9.4-10.2-11 in (or desired length), slip sts on a thread or bind off. Join the top seam of the hood.

Set in sleeves, and weave in ends on WS.

PATTERN OVER 50 STS



□ = K on RS, P on WS

▽ = P on RS, K on WS

■ = 1 bobble: K same st 5 times: K1tfl, K1tbl, K1tfl, K1tbl, K1tfl. Work 3 rows back and forth in St st. K5tog.

↘ = Sl 1 st on cn, hold to back, K1, K1 from cn.

↙ = Sl 1 st on cn, hold to front, K 1 K 1 from cn.

↘▽ = Sl 1 st on cn, hold to back, K2, P1 from cn.

↙▽ = Sl 2 sts on cn, hold to front, P1, K2 from cn.

↘↘ = Sl 2 sts on cn, hold to back, K2, K2 from cn.

↙↙ = Sl 2 sts on cn, hold to front, K2, K2 from cn.

↘↘↘ = Sl 3 sts on cn, hold to front, K3, K3 from cn.

Viking Bjørk

Overall, hat and cardigan 1005-3

Viking **BJØRK**, 90% cotton, 10% superwash merino wool,
Viking **ALPACA SILK**, 50% alpaca, 50% silk, 50 g ball

OVERALL

Size	0/3	6/9	months
Chest	53	58	cm
	20.9	22.8	in
Sleeve length	12	14	cm
	6.7	5.5	in
Leg length	17	19	cm
	6.7	7.5	in
Total length	52	58	cm
	20.5	22.8	in

CARDIGAN

Size	0/3	6	9	months
Chest	53	57	61	cm
	20.9	22.4	24	in
Length	23	25	27	cm
	9.1	9.8	10.6	in
Sleeve length	17	20	23	cm
	6.7	7.9	9.1	in

Materials

OVERALL

Size	0/3	6/9	months
Beige, 507	4	5	balls
White, 502	use some remains from hat for crochet edges		

HAT

White, 502	2	2	balls
Beige, 507	use some remains from overall for crochet edges		

CARDIGAN

Light Pink, 565	3	4	5	balls
--------------------	---	---	---	-------

Double pointed needles and circular needle size 3 mm – US 2
or 3 – UK/Canadian 11. Crochet hook size 2½ mm – US B/1 or
C/2 – UK/Canadian 12.

Gauge: 25 sts = approx. 10 cm/4 in over St st, using needles
size 3 mm. Check your tension to ensure success.

Seed st:

1st row: *K1, P1*.

2nd row: P all k-sts, K all p-sts.

Rep 2nd row.

OVERALL

Beg from neck edge. Using needles size 3 mm and beige yarn,
cast on 47-51 sts. Work 2 cm/0.8 in back and forth in Garter st.
Cont working in St st, but inc as foll: K6-7, next st: K1 + 1 yo
+ K1, K9-10, next st: K1 + 1 yo + K1, K13-13, next st: K1 + 1
yo + K1, K9-10, next st: K1 + 1 yo + K1, K6-7. Cont inc every
2nd row in each 4 corners (check that the inc takes place in mid
one of the three sts). Inc altog 10-11 times = 127-139 sts. Beg
from WS, and work 7 rows in Garter st. Cont working in rnds,
inc over the first rnd as foll: K1, *1 yo, K1*, rep *-* across the
rnd = 254-278 sts. Cont working in Seed st. When work
measures approx. 10-11 cm/4-4.3 in (measured from cast-on
edge), beg from mid back, work 38-42 sts, place a marker,
place next 51-55 sts on a holder (= sleeve), cast on 7 sts under
arm, work 76-84 sts, place next 51-55 sts on a holder, cast on 7

sts underarm, work next 38-42 sts = 166-182 sts on a rnd. Cont
working in Seed st until work measures approx. 35-39
cm/13.8-15.4 in (measured from the neck edge). Place markers
mid front and back. Inc 1 st on both sides of the mid markers
every 2nd rnd altog 6 times. Bind off 12 sts mid front and mid
back = 83-91 sts rem for each leg. Work each leg separately.
Cont working back and forth. Dec 1 st at each edge every 4th
row until leg measures approx. 15-17 cm/5.9-6.7 in, and
approx. 57-61 sts rem. K 1 row (= RS), and adjust the number
of sts evenly across the row to be 44-48 sts. Work 2 cm/0.8 in,
in Garter st. Bind off.

Work same for the other leg.

Sleeves: Slip sleeve sts on needles size 3 mm, and pick up 7 sts
under arm. Cont working in rnds in Seed st, and place a marker
mid under arm. Dec 1 st on both side of the marker approx.
every 2 cm/0.8 in until work measures approx. 10-12 cm/4-4.7
in. K 1 rnd, and adjust the number of sts evenly across the rnd
to be 30-32 sts. Work 2 cm/0.8 in back and forth in Garter st.
Bind off. Work same for the other sleeve. Sew Garter st edge
seams.

Finishing: Weave in all ends.

Inner leg, borders: Beg with back. Pick or knit up approx. 95-
105 sts along each leg. Work 2 cm/0.8 in, in Garter st. Bind
off. Place markers for altog 7 buttons, one mid crotch, rest
evenly spaced apart, last ones mid Garter st borders. Work
same for front, but make 7 buttonholes mid border. Buttonhole:
Bind off 2 sts. Next row: Cast on 2 sts over the bound-off ones.
Crochet border, split mid back: Using crochet hook size 2½
mm, work 1 row sc in beige yarn to both edges, make one
buttonhole loop (= ch4). Sew on the button.

Crochet border, sleeves and legs: Using crochet hook size
2½ mm and white yarn, work 1 rnd sc. Next rnd: *Ch4, 1 sl st
to first ch, skip 1 st*, rep *-* across the rnd.

HAT

Using needles size 3 mm and beige yarn, cast on 65-73 sts.
Work 2 cm/0.8 in, in Garter st. Change to white yarn, and K 1
row (= RS). Cont working back and forth in Seed st. When
work measures approx. 12-13 cm/4.7-5.1 in, bind off 21-25 sts
at each edge. Work 8-10 cm/3.1-4 in back and forth in Seed st
over mid 23-25 sts, but dec 1 st at each edge every 4th row
altog 5 times. When the mid part measures the same as bound-
off sides, bind off rem sts. Sew the mid back piece to the sides.

Lower edge border: Using needles size 3 mm and white yarn,
pick or knit up approx. 71-77 sts. Work 4 rows back and forth
in Seed st, P 1 row (=RS) = folding edge + 4 rows in Seed st.
Bind off. Fold the border in double, and sew on WS. Twist a
cord, or use a silk ribbon, and thread through the folded edge.
Weave in all ends on WS.

Crochet border around the hat: Using crochet hook size 2½
mm and white yarn, beg from right side, and work 1 row sc to
last beige color Garter st row. Next row: Work a picot row
same as for overall.

CARDIGAN

Using needles size 3 mm and light pink yarn, cast on 133-143-
153 sts. Work 2 cm/0.8 in back and forth in Garter st. Cont
working in Seed st. When work measures approx. 12-13-14
cm/4.7-5.1-6.5 in, work an eyelet row (= RS) for threading a
cord: *K2tog, 1 yo*, rep across the row. Cont working in Seed
st until work measures approx. 13-14-15 cm/5.1-5.5-5.9 in.
Place marker each side, 67-71-77 sts for back, and 33-36-38 sts
for each back. Bind off 8 sts at each edge (4 sts on both sides of
the markers). Put the piece aside.

Sleeves: Using needles size 3 mm, cast on 39-41-43 sts. Work 2
cm/0.8 in back and forth in Garter st. Cont working in Seed st.

Inc 1 st at each edge approx. every 2½-3-2½ cm/1-1.2-1 in, until you have 51-53-59 sts on a row. When work measures approx. 17-20-23 cm/6.7-7.9-9.1 in, bind off mid under arm 8 sts (4 sts on both side of the marker). Put the piece aside, and work same for the other sleeve.

Slip sleeves in (= where the sts were bound-off for armholes) on the same circular needle as body piece = 203-217-239 sts. Cont working back and forth, with raglan dec at each 4 seam line: Work until 3 sts rem before 1st seam line, *K2togtbl, K2, K2tog*, rep *-* at every seam line. Rep dec every 2nd row altog 18-20-22 times. Bind off at each edge every 2nd row 1x6, 2-3-3x1 sts, keep cont raglan dec at the same time for 2-2-3 times more. Bind off rem sts.

Hood: Using needles size 3 mm, cast on 65-69-73 sts. Work approx. 5 cm/2 in, in Garter st. Cont working in Seed st until work measures approx. 7-8-8 cm/2.8-3.1-3.1 in. Dec 1 st at each edge every 6th row altog 6 times. When work measures 15-16-18 cm/5.9-6.3-7.1 in, bind off beg of each row 1x9-10-10 sts, 1x9-10-10 sts, bind off rem 17-17-21 sts. Sew mid back seam, and sew the hood to the neck edge. Garter st edge folds on RS (see photo).

Finishing

Pockets: Using needles size 3 mm, cast on 15 sts. Work approx. 7 cm/2.8 in back and forth in Seed st. Bind off. Work same for the other pocket. Sew on pockets, one on each front.

Buttonhole loops: Using crochet hook size 3 mm, ch20. Turn, and work 1 sc to each ch. Make altog 3 loops and sew them on right front (see photo). Sew on three buttons.

Weave in ends on WS. If you wish, you can twist a cord or use a silk ribbon, and thread it through the eyelet row.

Viking Bjørk

Crochet blanket, cardigan and hat 1005-4

Viking **BJØRK**, 90% cotton, 10% superwash merino wool, Viking **ALPACA SILK**, 50% alpaca, 50% silk, 50 g ball **BLANKET**, approx.

	90x90	cm
	35.4x35.4	in
Size	6/9	12/18
SWEATER		
Chest	54	59
	21.3	23.2
Length	25	33
	9.8	13
Sleeve length	24	26
	9.4	10.2

Materials

BLANKET

White, 500	6	balls
Cherry, 563	2	balls
Rose, 564	2	balls
Violet, 567	2	balls
Heather, 568	2	balls

SWEATER AND HAT

White, 500	2	3	balls
Cherry, 563	1	1	ball
Rose, 564	1	1	ball
Violet, 567	1	1	ball

Crochet hook size 3 mm – US C/2 or D/3 – UK/Canadian 11. 2 lengths, approx. 60 cm/23.6 in each, of white silk ribbon for the hat.

Gauge: 1 square for the blanket measures approx. 6½ cm/2.6 in. 1 square for the hat measures approx. 6 cm/2.4 in. Check your tension to ensure success.

Abbreviations: ch = chain st; sl st = slip st; sc = single crochet; dc = double crochet

Note! Block each square into measurements before attaching them tog. Cardigan and hat: It is important to block all pieces into measurements before sewing them tog.

BLANKET

Work same for each square:

1st square:

1st rnd (Rose): Beg with an adjustable ring, ch1, 8 sc into ring. Gently pull the tails and tighten the ring. End the rnd with 1 sl st to 1st ch of the rnd.

2nd rnd (Rosa): Ch5 (= 1st dc + ch2), *[1 dc, ch2] twice to next st (= corner), 1dc, ch2 to next st*, rep *-* altog 3 times, [1 dc, ch2] twice to next st, end with 1 sl st to 3rd ch of the rnd.

3rd rnd (Cherry): Ch1, 3 sc to next ch-space, 3 sc, ch1, 3 sc to next ch-space (= corner), *3 sc to next 2 ch-spaces, 3 sc, ch1, 3 sc to next ch-space*, rep *-* altog 3 times, 3 sc to next ch-space, end with 1 sl st to 1st ch of the rnd.

4th rnd (White): Ch3 (= 1st dc), 1 dc to each st, **but** to each corner 1 dc + ch1 + 1 dc, end with 1 sl st to 3rd ch of the rnd.

2nd square:

1st and 2nd rnds are worked with violet yarn, 3rd rnd in heather and 4th in white.

Weave in all ends on WS.

Work altog 98 squares, both alternative 1 and 2. Join squares tog into 14 rows with 14 squares on a row (1 rose, 1 violet, changing the order every row – block squares into measurement before attaching them). Join squares tog by crocheting from WS (place squares RS facing each other), 1 sl st to each st. You can also sew squares tog.

Crochet edge

Worked in white.

1st rnd: Beg with ch1, 1 sc to each st, **but** to each corner 1 sc + ch1 + 1 sc to same st, end with 1 sl st to 1st ch of the rnd.

2nd rnd: Same as 1st rnd, **but** make a picot to every 5th st: 1 sc, ch5, 1 sl st to sc.

Weave in ends on WS. Dampen blanket slightly, and leave to dry.

HAT

Work squares same as for blanket, **but**:

1st and 2nd rnd: Work in cherry.

3rd rnd: Work in violet.

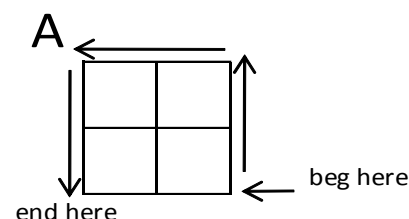
4th rnd: Work in white, sc instead of dc.

Work altog 16 squares.

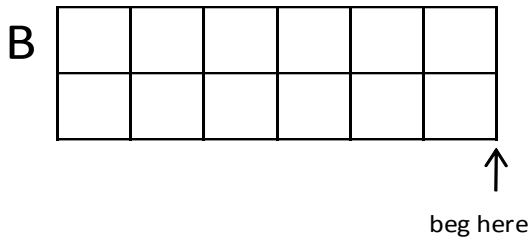
Finishing: Join squares same way as for blanket. Note! Block squares into measurements before joining them.

Join 4 squares tog for mid back:

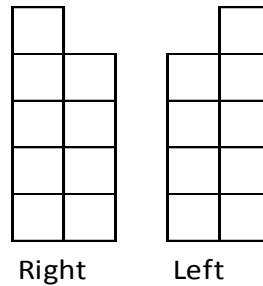
Hekle sammen 4 ruter til en firkant slik (=midt bak):



Join tog rem 12 squares into 2 rows with 6 squares on a row:



Fronts, 12/18 months



Place pieces RS facing each other. Beg joining them tog as the arrows point out, 1 sl st to each st, but only through back of the loops. Piece B is joined around piece A as shown on the sketch. Note! Block squares into measurements before joining them.

Border:

Worked in white.

1st rnd: Beg from mid back. Join the yarn with 1 sl st. Ch1, 1 sc to each st across the rnd, end with 1 sl st to 1st ch of the rnd.
2nd rnd: Ch3, *skip 1 st, 1 sc to next st, ch1*, rep *-*, end with 1 sl st to 2nd ch of the rnd.

Thread 1 silk ribbon along the front edge and another along neck edge. Ribbons meet in the corners, and are tightened before tying a knot. You can also twist 2 cords using white yarn.

CARDIGAN

Size 6/9 months:

Work squares same as for blanket, **but:**

1st and 2nd rnd: Work in violet.

3rd rnd: Work in rose.

4th rnd: Work in white, sc instead of dc.

Work altog 62 squares.

Size 12/18 months:

1st and 2nd rnd: Work in violet.

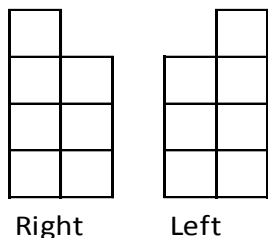
3rd rnd: Work in rose.

4th rnd: Work in white.

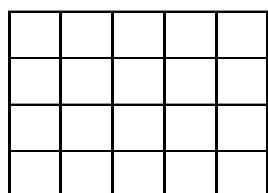
Work altog 71 squares.

Finishing: Join squares same way as for blanket. Note! Block squares into measurements before joining them.

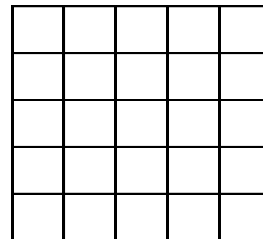
Fronts, 6/9 months



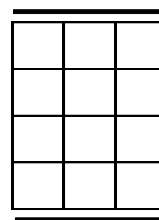
Back, 6/9 months



Back, 12/18 months



Sleeves – both sizes: Work first as shown in the sketch below. See if length fits the child, and if needed work one more row of squares to add length. Sew sleeve seams marked with lines (= mid under arm), dampen the piece before sewing the seam.



When all squares are joined tog, crochet or sew side seams leaving last 2 squares for armholes. Crochet/sew shoulder seams. Set in sleeves. Weave all ends on WS. Note! Dampen all pieces before joining them.

Border (same for both sizes): Work same as for blanket.

Viking Bjørk

Cardigan, trousers and hat 1005-5

Viking **BJØRK**, 90% cotton, 10% superwash merino wool,
Viking **ALPACA SILK**, 50% alpaca, 50% silk, 50 g ball

CARDIGAN

Size	3	6/9	12	18	24	months
Chest	55	60	65	70	74	cm
	21.7	23.6	25.6	27.6	29.1	in
Length	24	27	30	33	35	cm
	9.4	10.6	11.8	13	13.8	in
Sleeve length	18	22	24	26	28	cm
	7.1	8.7	9.8	10.2	11	in

TROUSERS

Size	3/6	9/12	18/24	months
Total length	56	64	72	cm
	22	25.2	28.3	in
Leg length	18	24	29	cm
	7.1	9.4	11.4	in

Materials

SWEATER

AND HAT

Petrol, 529 3 3 4 4 5 balls

TROUSERS

Petrol, 529 3 3 4 balls

Double pointed needles and circular needle size 2½ and 3 mm
– US 1 or 2 and 2 or 3 – UK/Canadian 13 or 12 and 11.

5 buttons for cardigan.

2 buttons for trousers.

Gauge: 25 sts = approx. 10 cm/4 in over St st, using needles
size 3 mm. Check your tension to ensure success.

CARDIGAN

Using needles size 3 mm, cast on 138-150-162-174-186 sts. K 1 row. Beg from RS, work Garter st over 8 sts (= front border), patt as charted over next 122-134-146-158-170 sts (ending as shown on the chart), Garter st over 8 sts (= front border). Cont working back and forth as established until work measures approx. 4 cm/1.6 in, **but** make 1 buttonhole mid left front border when work measures 1½ cm/0.6 in. **Buttonhole:** Bind off 2 sts. Next row: Cast on 2 sts over the bound-off sts. When the lower edge is completed, cont as foll: Work Garter st over 8 sts, cable patt over 8 sts, St st over next 106 118-130-142-154 sts, cable patt over 8 sts, Garter st over 8 sts. Cont working back and forth as established, and make buttonholes approx. every 4½-5-5½-6-6½ cm/1.8-2.2-2.4-2.6 in apart (altog. 4 buttonholes). When work measures approx. 14-16-18-21-22 cm/5.5-6.3-7.1-8.3-8.7 in, place markers each side, 39-41-45-47-51 sts for both fronts, and 60-68-72-80-84 sts for back. Beg from RS, and bind off for armholes at each side 12 sts (6 sts on both sides of the markers). Finish back and fronts separately.

Back: Cont working back and forth in St st until work measures approx. 24-27-30-33-35 cm/9.4-10.6-11.8-13-13.8 in, and armhole measures 10-11-12-12-13 cm/4-4.3-4.7-4.7-5.1 in. Bind off.

Right front: Cont working same as before until work measures approx. 20-23-26-29-31 cm/7.9-9.1-10.2-11.4-12.2 in. Bind off first 8-10-10-12-12 sts for neck edge. Bind off at neck edge every 2nd row 2x3, 1x2, 1x1 sts (same for all sizes). When work measures same as back, bind off.

Work same for left front, rev all shaping (without buttonholes).

Sleeves: Using dpn size 3 mm, cast on 36-36-42-42-42 sts.

Work in rnds 4 cm/1.6 in, in patt as charted (check from mid

sleeve where to beg patt). K 1 rnd, and adjust the number of sts evenly across the rnd to be 44-46-48-50-52 sts (do not inc over mid cable as it cont all the way up the sleeve). Cont working in St st and cable patt over mid 8 sts. Place a marker mid under arm. Inc 1 st on both side of the marker approx. every 2½-2½-3-4-3 cm/1-1-1.2-1.6-1.2 in until you have 54-58-60-60-66 sts on a rnd. When work measures 18-22-24-26-28 cm/7.1-8.7-9.4-10.2-11 in, or desired length, divide work mid under arm, and cont working back and forth for 2 cm/0.8 in (will be sewn to the bound-off sts of the body). Bind off. Work same for the other sleeve.

Finishing: Sew shoulder seams.

Neck border: Beg from right front edge. Pick or knit up approx. 13 sts per each 5 cm/2 in around the neck edge. Work 2 cm/0.8 in, in Garter st (make 1 buttonhole after 1 cm/0.4 in on left side). Bind off rather loosely.

Sew on sleeves, and weave in all ends on WS. Sew on buttons.

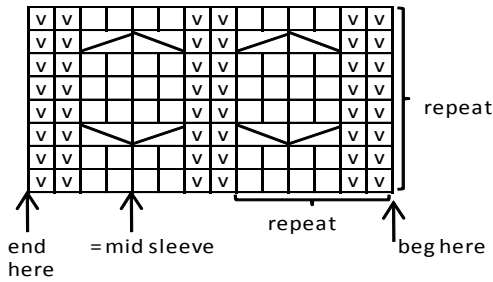
TROUSERS

Beg from one leg. Using dpn size 3 mm, cast on 46-52-58 sts. Work in patt as charted until border measures approx. 4 cm/1.6 in. K1 rnd, and adjust the number of sts evenly across the rnd to be 66-72-78 sts. Cont working in St st. Mark beg of rnd, and inc 1 st both side of the marker approx. every 2½-2½-2½ cm/1-1-1 in, until you have 76-86-96 sts on a rnd. When work measures approx. 18-24-29 cm/7.1-9.4-11.4 in, put the piece aside. Work same for the other leg.

Slip legs on circular needle size 3 mm (with inc facing each other), and cont working in rnds in St st. Beg and end of the rnd = mid back. Beg here and dec as foll: K1, K2tog, work until 3 sts rem before mid front, sl1, K1, pss0, K2 (= last st of one leg and 1st st of another leg = mid front), K2tog, work until 3 sts rem before end of the rnd, sl1, K1, pss0, K1. Rep dec every 2nd rnd 4 times = 136-156-176 sts. Cont working without dec until work measures approx. 30-39-45 cm/11.8-15.4-17.7 in. Work short rows to rise the back of the trousers: Beg from mid back, turn, work 6 sts, turn, work 11 sts. Cont working in the same way, each time 5 sts more, 4 times more at each side. K 1 rnd over all sts, dec 4-0-2 sts evenly across the rnd = 132-156-174 sts. Cont working in patt as charted until work measures approx. 40-48-55 cm/15.7-18.9-21.7 in. Work 2½ cm/1 in, in K1,P1 rib. Place marker each side, with 66-78.87 sts for both back and front. Beg mid back, bind off 10-12-14 sts, work rib over next 11 sts (= strap), bind off next 90-110-124 sts, work rib over next 11 sts (= strap), bind off rem 10-12-14 sts. Work straps back and forth in rib, until they measure 27-30-32 cm/10.6-11.8-12.6 in, but make a buttonhole over 2 sts 5 cm/2 in before binding off sts. Make yet another buttonhole after approx. 2½ cm/1 in. Bind off sts rather loosely.

Weave in all ends on WS. Sew on buttons on front.

PATTERN FOR CARDIGAN AND TROUSERS



□ = K on RS, P on WS

▣ = P on RS, K on WS

▤ = Sl 1 st on cn, hold to back, K1, K1 from cn.

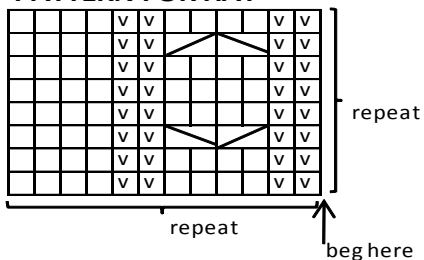
▥ = Sl 1 st on cn, hold to front, K1, K1 from cn.

HAT

Beg from one ear flap. Using needles size 3 mm, cast on 3 sts. Work back and forth K1, P1, K1, and inc 1 st beg of each row until you have 17-19-21 sts on a row = 1 ear flap. Work same for the other ear flap.

Using a circular needles, work across one ear flap, cast on 32-36-42 new sts (= front), work across the other ear flap, cast on 12-14-16 new sts (= back) = 78-88-100 sts. Cont working in rnds in K1,P1rib, until the border measures approx. 2½ cm/1 in (measured from mid front). K 1 rnd, and adjust the number of sts evenly across the rnd to be 84-96-108 sts. Cont working in rnds in patt as charted until work measures approx. 13-14-16 cm/5.1-5.5-6.3 in (measured from front). Cont working in rnds in St st, and dec 30 sts evenly across the rnd. K 2 rnds, and rep dec = 24-36-48 sts rem. K 2 rnds. Dec 12-18-24 sts evenly across the rnd. Break yarn, and thread through rem sts. Weave ends on WS. Twist 2 cords (approx. 20 cm/7.9 in long) and attach to ear flaps.

PATTERN FOR HAT



□ = K on RS, P on WS

▣ = P on RS, K on WS

▤ = Sl 1 st on cn, hold to back, K1, K1 from cn.

▥ = Sl 1 st on cn, hold to front, K1, K1 from cn.

Viking Bjørk

Sweater and cardigan 1005-6

Viking **BJØRK**, 90% cotton, 10% superwash merino wool, Viking **ALPACA SILK**, 50% alpaca, 50% silk, 50 g ball

Size	3/6m	9m	12/18m	2	4	Yrs
SWEATER						
Chest	51	55	60	64	68	cm
	21.1	21.7	23.6	25.2	26.8	in
Length	25	27	33	36	40	cm
	9.8	10.6	13	14.2	15.7	in
Sleeve length	22	24	26	30	33	cm
	8.7	9.4	10.2	11.8	13	in
Materials						
CARDIGAN						
Blue, 523	3	3	4	4	5	balls
SWEATER AND SOCKS						
Green, 531	3	3	4	4	5	balls

Double pointed needles and circular needle size 3 mm – US 2 or 3 – UK/Canadian 11.
5 buttons.

Gauge: 25 sts = approx. 10 cm/4 in over St st, using needles size 3 mm. Check your tension to ensure success.

Back: Using needles size 3 mm, cast on 60-64-72-76-80 sts. Work 3 cm/1.2 in back and forth in K2,P2 rib. P 1 row (= WS), and adjust the number of sts evenly across the row to be 74-82-86-90-98 sts. Beg patt as foll:

K4, P4, K4 = **3/6 months**

P4, K4, P4, K4 = **9 months**

K2, P4, K4, P4, K4 = **12/18 months**

K4, P4, K4, P4, K4 = **2 yrs**

P4, K4, P4, K4, P4, K4 = **4 yrs**

All sizes: work cable patt as charted over next 50 sts, end as beg of the row, but work sts in rev order. Cont working back and forth as established until work measures 25-27-33-36-40 cm/9.8-10.6-13-14.2-15.7 in. Bind off.

Right front: Using needles size 3 mm, cast on 32-32-36-40-44 sts. Work approx. 3 cm/1.2 in back and forth in K2,P2 rib. P 1 row (= WS), and adjust the number of sts evenly across the row to be 48-51-53-56-58 sts. Beg from RS, work Garter st over 6 sts (= front border), cable patt as charted over 37 sts, end as foll:

K4, P1 = **3/6 months**

K4, P4 = **9 months**

K4, P4, K2 = **12/18 months**

K4, P4, K4, P1 = **2 yrs**

K4, P4, K4, P3 = **4 yrs**

Cont working back and forth as established until work measures 21-22-28-31-34 cm/8.3-8.7-11-12.2-13.4 in. Bind off first 13-15-17-19-19 sts for neck edge. Bind off at neck edge every 2nd row 1x5, 1x3, 1x2 and 1x1 sts (same for all sizes). When work measures same as back, bind off. Work same for left front, rev all shaping.

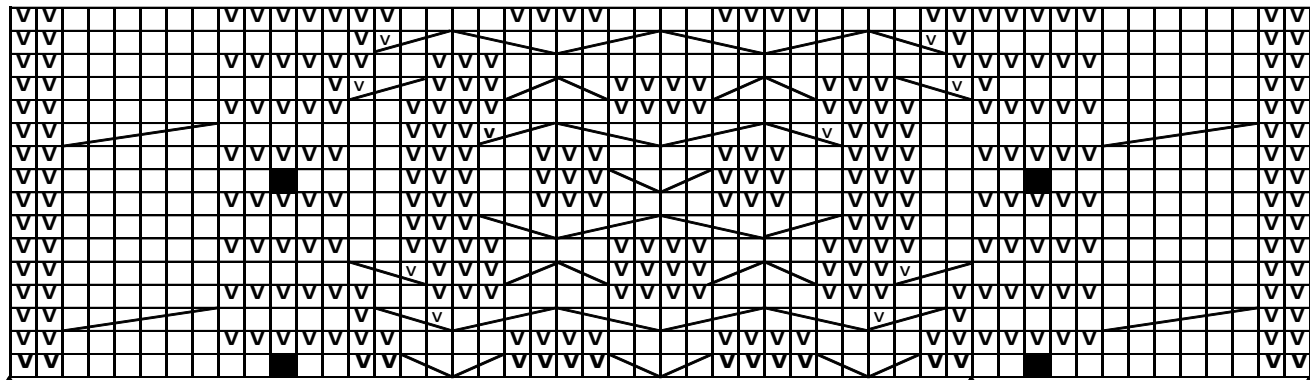
Sleeves: Using needles size 3 mm, cast on 52-60-60-68-68 sts. Work back and forth in K4,P4 rib. Inc 1 st at each edge approx. every 2½-4-3-4½-2½ cm/11.6-1.2-1.8-1 in, until you have 66-70-76-80-90 sts on a row. When work measures approx. 22-24-26-30-33 cm/8.7-9.4-10.2-11.8-13 in, or desired length (Note! Approx. 3-4 cm/1.2-1.6 in will be turned on RS), bind off. Work same for the other sleeve.

Finishing: Sew shoulder and side seams.

Hood: Beg from right front. Using needles size 3 mm, pick or knit up approx. 100-100-108-108-116 sts along the neck edge. Work back and forth K4,P4 inside 4 sts at both edges (= worked in Garter st). When work measures approx. 19-21-24-26-28 cm/7.5-8.3-9.4-10.2-11 in (or desired length), slip sts on a thread or bind off. Join the top seam of the hood.

Set in sleeves, and weave in ends on WS.

PATTERN OVER 50 STS



end patt here for right front
(beg patt here for left front)

Beg here for right front
(patt for left front
is worked in rev)

Beg here
for back

☐ = K on RS, P on WS

∇ = P on RS, K on WS

■ = 1 bobble: K same st 5 times: K1tfl, K1tbl, K1tfl, K1tbl, K1tfl. Work 3 rows back and forth in St st. K5tog.

▤ = Sl 1 st on cn, hold to back, K1, K1 from cn.

▥ = Sl 1 st on cn, hold to front, K 1 K 1 from cn.

▧ = Sl 1 st on cn, hold to back, K2, P1 from cn.

▨ = Sl 2 sts on cn, hold to front, P1, K2 from cn.

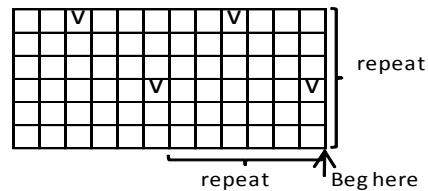
▩ = Sl 2 sts on cn, hold to back, K2, K2 from cn.

▪ = Sl 2 sts on cn, hold to front, K2, K2 from cn.

▬ = Sl 3 sts on cn, hold to front, K3, K3 from cn.

SWEATER

Size	3/6	9	12/18	months	2	4	yrs
Chest	52	58	62		67	72	cm
	20.5	22.8	24.4		26.4	28.3	in
Length	24	29	33		36	40	cm
	9.4	11.4	13		14.2	15.7	in
Sleeve length	20	22	25		28	31	cm
	7.9	8.7	9.8		11	12.2	in



□ = K on RS, P on WS

▣ = P on RS, K on WS

Body: Using needles size 3 mm and green yarn, cast on 132-144-156-168-180 sts. Work in rnds 3 cm/1.2 in, in K1,P1 rib. Place markers each side, 67-73-79-85-91 sts for front, and 65-71-77-83-89 sts for back. Cont working in St st and patt as charted until work measures 12-16-19-21-24 cm/4.7-6.8-7.5-8.3-9.4 in. Bind off 10 sts at each side (5 sts on both sides of the markers). Put the piece aside.

Sleeves: Using needles size 3 mm and green yarn, cast on 40-42-44-46-46 sts. Work rib same as for body. K 1 rnd, and adjust the number of sts evenly across the rnd to be 47-49-51-53-53 sts. Cont working in rnds in St st and patt as charted. Place a marker mid under arm. Inc 1 st on both side of the marker approx. every 2½-2½-2½-2½ cm/1-1-1-1-0.8 in, until you have 61-65-71-75-81 sts on a row (inc sts are worked in patt). When sleeve measures 20-22-25-28-31 cm/7.4-8.7-9.8-11-12.2 in, or desired length, bind off 10 sts mid under arm (5 sts on both side of the marker). Put the piece aside. Work same for the other sleeve.

Yoke: Slip in sleeves (= where the sts were bound-off for armholes) on the same circular needle as the body piece = 214-234-258-278-302 sts. Cont working in rnds in patt as charted, with raglan dec at each 4 seam lines: Work until 3 sts rem before 1st seam line, *S11, K1, pssso, K2, K2tog*, rep *-* at every seam line. Rep dec every 2nd rnd approx. 17-19-20-22-24 times. Bind mid front 9-13-17-19-21 sts for neck edge. Cont working back and forth. Bind off at each edge every 2nd row 1x2 and 1x1 sts (cont raglan dec at the same time). When you have completed altog 20-22-23-25-27 dec, bind off rem sts.

Neck border: Beg from shoulder. Using needles 3 mm and green yarn, pick or knit up approx. 68-72-76-78-80 sts around the neck edge. Work in rnds approx. 3 cm/1.2 in, in K1,P1 rib. Bind off in rib.

Sew under arm seams, and weave in all ends on WS.

SOCKS

Using dpn size 3 mm and green yarn, cast on 38-40-42-44-46 sts. Work in rnds 6 cm/2.4 in, in K1,P1 rib. Change to dpn size 3 mm, and work for the heel over mid back 19-20-21-22-23 sts: work until 1 st rem at one edge, turn, work until 1 st rem in the other edge, turn. Cont working in the same way until 5-6-7-8-9 sts rem in the middle. Turn, and work 1 st more each row. To avoid holes, M1 after the last mid st, and Ktugt1 with next st. Rep until all sts are returned back to work. Cont working in St st over all sts. Place markers each side, and dec 1 st each side every 2nd rnd 4-4-5-5-5 times. Cont working in St st without dec until foot measures 7-8-9-10-11 cm/2.8-3.1-3.5-4-4.3 in, or desired length. Beg dec: Dec 1st st beg of each dpn every 2nd rnd 4 times, and then every rnd until 6-8-8-6-8 sts rem. Break yarn, and thread through rem sts. Weave in ends on WS. Work same for the other sock.