

Viking Camel

Dress

1507-1

Size:	S/M - L
Length:	93-102 cm
	36.6-40.4 in

ALTERNATIVE YARNS: Viking Camel-Luxury Fiber (78% camel fiber-22% nylon), Viking Hobbygarn (100% wool), 50 g ball

Okra, 253: 10-11 balls

Circular needle size 6 and 7 mm – US 10 and 10½ or 11 – UK/Canadian 4 and 2

Gauge: 14 sts = approx. 10 cm/4 in over St st using needles size 7 mm. **Check your gauge to ensure success.**

Using needles size 6 mm, cast on 120-126 sts. Work in rnds 8 cm/3.1 in in K3,P3 rib. Place markers at each side, 60-63 sts for both back and front. Cont working in rnds in St st. Inc 1 st both sides of the markers every 5th – 6th rnd (= inc 4 sts on a rnd) altog 18 times, and then every 2nd rnd altog 32 times. There is now 320-326 sts on a rnd. When work measures approx 81-90 cm/31.9-35.4 in, divide work at sidemarkers for armholes = 160-163 sts for both back and front. Finish each side separately.

Back

Cont working in St st until work measures approx. 93 – 102 cm/36.6 – 40.4 in, and armhole measures approx. 12 cm/4.7 in (measured from division). Bind off.

Front

Work same as for back. When work measures approx. 86-95 cm/33.9-37.4 in, and armhole measures approx. 5 cm/2 in, bind off 17-19 mid sts. Finish each side separately. Bind off at neck edge every 2nd row 1x2 sts, and 2x1 st. When front measures same as back, bind off. Work same for the other side, rev all shaping.

Finishing

Sew shoulder seams

Sleeve edges

Using needles size 6 mm, pick or knit up approx. 30 sts (number of sts must be multiple by 6). Work in rnds approx. 24-26 cm/9.4-10.2 in, or desired length, in K3,P3 rib. Bind off in rib. Work same for the other sleeve.

Collar

Using needles size 6 mm, pick or knit up approx. 64-68 sts. Work in rnds approx. 8 cm/3.1 in in K2,P2 rib. Inc 1 st to each knit- and purl-stripe. Cont working in K3,P3 rib until collar measures approx. 18 cm/7.1 in. Bind off in rib.

Viking Camel

Sweater

1507-2

Size:	XS - S - M - L - XL
Bust:	96 - 104 - 113 - 121 - 127 cm
	38.8-40.8-44.3-47.4-50.1 in
Length, front:	58 - 60 - 62 - 63 - 64 cm
	22.8-23.6-24.4-24.8-25.2 in
Length, back:	66 - 68 - 70 - 71 - 72 cm
	26-26.8-27.6-28-28.3 in
Sleeve length:	46 - 47 - 48 - 49 - 50 cm
	18.1-18.5-18.9-19.3-19.7 in

ALTERNATIVE YARN: Viking Camel-Luxury Fiber (78% camel fiber-22% nylon), Viking Hobbygarn (100% wool), 50 g ball

Charcoal, 217: 6 - 7 - 7 - 8 - 9 balls
Dark Grey, 215: 1 - 1 - 1 - 1 - 1 ball

Knitting needles size 6 and 7 mm – US 10 and 10½ or 11 – UK/Canadian 4 and 2
+ 20 buttons

Gauge: 14 sts = approx. 10 cm/4 in over St st using needles size 7 mm. **Check your gauge to ensure success.**

Back

Using needles size 7 mm, and charcoal clr yarn, cast on 85 – 91 – 97 – 103 – 107 sts. Work back and forth approx. 8 cm/3.1 in patt I.

Cont working in patt over first and last 6 sts, and St st over rem sts.

When work measures approx. 44 – 44 – 45 – 45 – 45 cm/17.3-17.3-17.7-17.7-17.7 in, bind off for armhole as foll: Work patt over 6 sts, bind off next 6 sts, work in St st until 12 sts rem, bind off 6 sts, patt I over last 6 sts. Leave work aside, and knit the sleeves.

Sleeves

Using needles size 7 mm and charcoal clr yarn, cast on 30 – 30 – 30 – 36 – 36 sts. Work in rnds approx. 12 cm/4.7 in in patt I. Place a marker beg of rnd (= mid under sleeve). Cont working in rnds in St st. Inc 1 st both sides of the marker approx. every 2 ½ – 2 ½ – 2 – 2 ½ – 2 cm/1-1-0.8-1-0.8 in until there is 56 - 58 – 62 – 64 – 68 sts on a rnd, and sleeve measures approx. 46 – 47 – 48 – 49 – 50 cm/18.1-18.5-18.9-19.7 in. Bind off 6 sts mid under sleeve (3 sts both sides of the marker). Work same for the other sleeve.

Knit sleeves on same needle with back: Work 6 first back sts, sts for one sleeve, sts for back, sts for the other sleeve, and 6 last back sts. There is now 173 – 183 – 197 – 207 – 219 sts on a row. Cont working back and forth, and **same time** beg raglan-dec as foll: Patt I over 6 sts, K2tog, work until 2 sts rem of first sleeve, sl 1 st, K1, pssso, K2tog, work until 2 sts rem for back, sl 1 st, K1, pssso, K2tog, work until 2 sts for the other sleeve, sl 1 st, K1, pssso, end with patt I over 6 last sts.

Cont working back and forth, and rep dec every 2nd row (RS) 22 – 23 – 25 – 26 – 27 times. There is now 41 – 45 – 47 – 51 – 57 sts on a row. Change to needles size 6 mm. Work back and forth approx. 4 cm/1.6 in patt I. Bind off knitwise on RS-row.

Front

Using needles size 7 mm and charcoal clr yarn, cast on 49 – 55 – 61 – 67 – 71 sts. Work back and forth approx. 8 cm/3.1 in in patt I. Cont working back and forth in St st over all sts. When work measures approx. 36 – 36 – 37 – 37 – 37 cm/14.2-14.2-14.6-14.6-14.6 in, beg raglan-dec: K1, K2tog, work until 3 sts rem, sl

1 st, K1, pss0, K1. Rep raglan-dec every 2nd row altog. 22 – 23 – 25 – 26 – 27 times. There is now 5 – 9 – 11 – 15 – 17 sts on a row. Change to needles size 6 mm. Work approx. 4 cm/1.6 in in patt I over all sts. Bind off knitwise on RS-row.

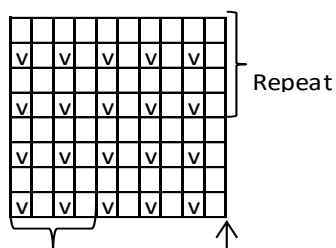
Frontbands

Using needles size 6 mm and charcoal clr yarn, pick or knit up approx. 83 – 85 – 87 – 89 – 91 sts along right side of the front (also along raglan-dec). Change to dark grey yarn. Knit 1 row from RS, and cont working back and forth approx. 4 cm/1.6 in in patt I. Bind off knitwise on RS-row.

Work same for the other side.

Finishing: Sew underarm seams. Fasten front and back with 10 buttons for each side (see photo).

Pattern I



Repeat

Beg here

□ = Knit from RS, purl on WS

▣ = Purl on RS, knit on WS

Viking Camel

Poncho and hat

1507-3

Size:	Woman
Width, lower edge:	198 cm
	78 in
Length:	65 cm
	25.6 in

ALTERNATIVE YARN: Viking Camel-Luxury Fiber (78% camel fiber-22% nylon), Viking Hobbygarn (100% wool), 50 g ball

Poncho and hat

Light Grey, 213:	5 balls
Dark Grey, 215:	3 balls
Charcoal, 217:	2 balls

Knitting needles size 6 and 7 mm – US 10 and 10½ or 11 – UK/Canadian 4 and 2

+ 5 buttons

Gauge: 14 sts = approx. 10 cm/4 in over St st using needles size 7 mm. **Check your gauge to ensure success.**

PONCHO

Using needles size 6 mm and dark grey yarn, cast on 276 sts. Work in rnds approx. 4 cm/1.6 in in K3,P3 rib, and after that purl 1 rnd (= folding edge). Change to needles size 7 mm. Work in patt A, and dec as charted. Cont after that in St st with light grey yarn, and adjust on 1st St st-rnd number of sts to be 252 sts. When work measures approx. 38 cm/15 in, measured from folding edge, dec as foll: *K2tog, K12*, rep *-* across the rnd. Rep dec with 1 st less between dec when work measures approx. 43 cm/16.9 in. There is now 216 sts on a rnd.

Next rnd: St st over 51 sts, cast on 6 new sts (= buttonband), turn, Garter st over 3 sts, K3 (from WS), purl until 6 sts rem (from WS), and end with K3 (from WS), and end with Garter st over 3 sts. Turn. You are now mid front. Cont working back and forth in St st same as before, rib with P3, Garter st over 2 bands. When work measures 47 cm/18.5 in, dec as foll: Garter st over 3 sts, P3, K3, dec as charted for patt B until 9 sts rem, K3, P3, Garter st over 3 sts. Cont working back and forth until 69 sts rem on a row (remember 3 buttonholes). Buttonhole, inside 2 sts from the edge: Bind off 2 sts. Next row: Cast on 2 new sts over the bound-off ones.

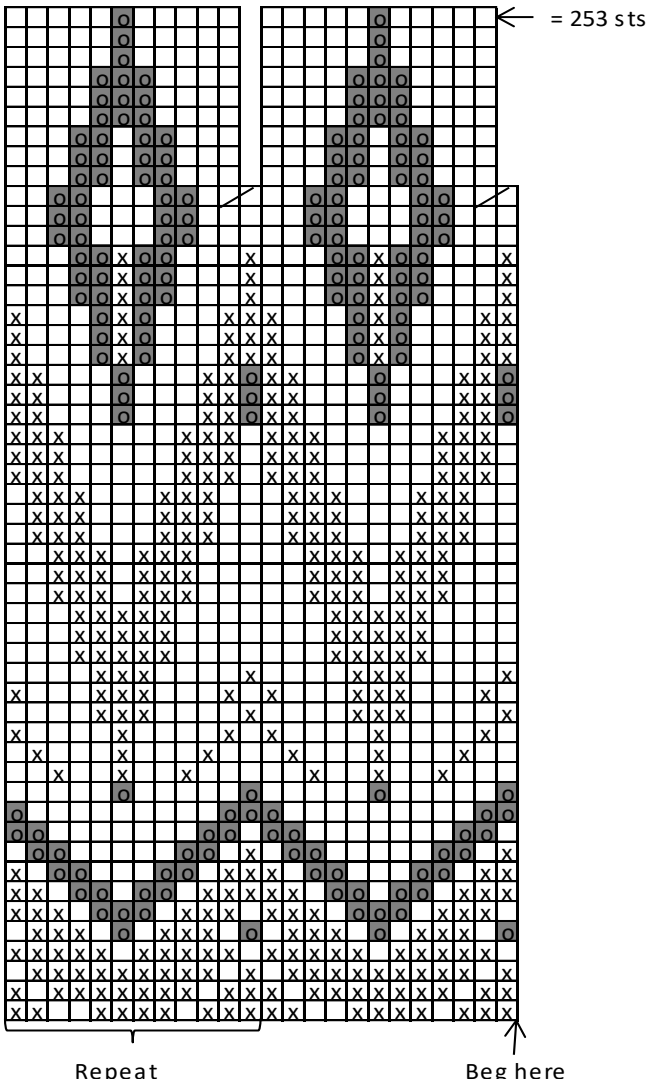
Collar: Change to needles size 6 mm and charcoal clr yarn.

Work 1 rnd in St st, and after that back and forth in P3,K3 rib (Garter st over first and last 3 sts). Make 2 last buttonholes when collar measures approx. 7 cm/2.8 in and 14 cm/5.5 in. When collar measures approx. 16 cm/6.3 in, bind off in rib.

HAT

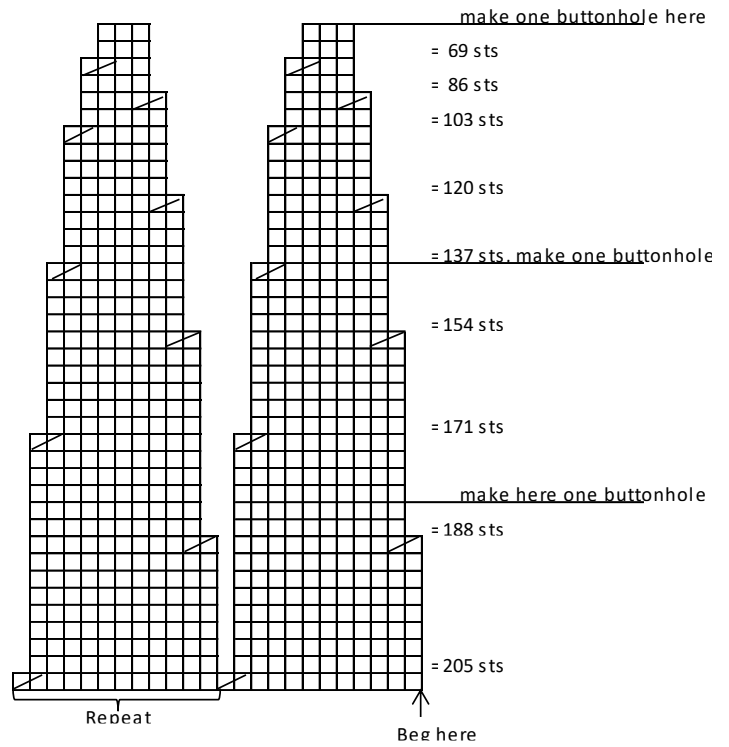
Using needles size 6 mm and charcoal clr yarn, cast on 72 sts. Work in rnds approx. 7 cm/2.8 in in K3,P3 rib. Change to needles size 7 mm. Work 1 rnd in St st, and inc evenly across 12 sts number of sts to be 84 sts. Work in patt A until hat measures approx. 28 cm/11 in. Beg dec: Knit all sts tog in pairs. Work 1 rnd in St st. Rep dec every 2nd rnd until 11 sts rem. Break yarn, thread through rem sts, tighten yarn slightly, and weave in on WS

Pattern A



- x = Dark Grev
- = Light Grev
- o = Charcoal

Pattern B



Viking Camel

Poncho

1507-4

Size

Woman

Length:

60 cm

23.6 in

ALTERNATIVE YARNS: Viking Camel-Luxury Fiber (78% camel fiber-22% nylon), Viking Hobbygarn (100% wool), 50 g ball

Burgundy, 262:

6 balls

Circular needle size 6 and 7 mm – US 10 and 10½ or 11 – UK/Canadian 4 and 2

Gauge: 14 sts = approx. 10 cm/4 in over St st using needles size 7 mm. **Check your gauge to ensure success.**

Back

Using needles size 6 mm, cast on 46 sts. Work back and forth 3 rows in K1,P1 rib. Change to needles size 7 mm. Cont working back and forth in patt as charted until work measures approx. 60 cm/23.6 in. Bind off.

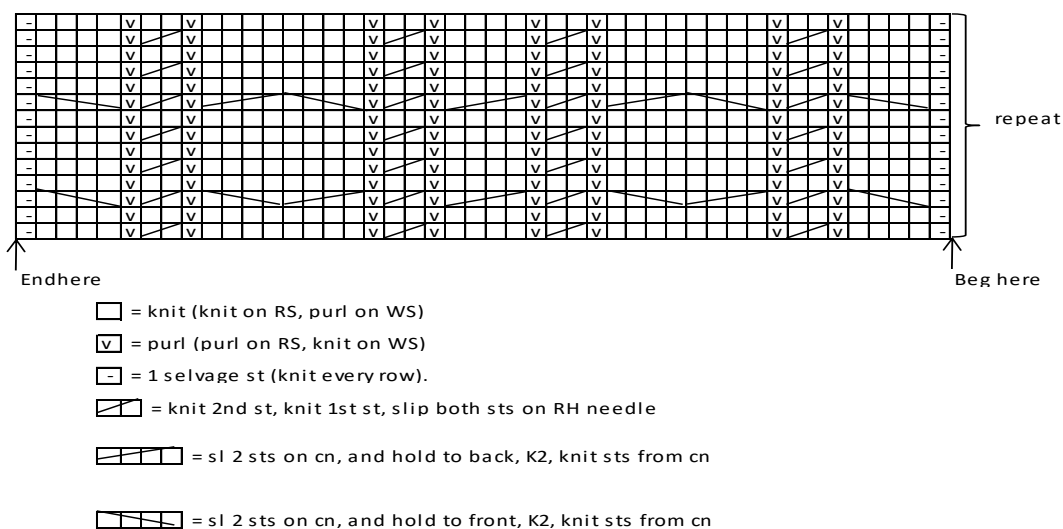
Work same for front, but when work measures approx. 53 cm/20.9 in, bind off 18 mid sts. Finish each side separately. Bind off at neck edge every 2nd row 2x2 sts, and 2x1 st. Cont working over rem sts until front measures same as back. Bind off. Work same for the other side, rev all shaping.

Sew shoulder seams.

Place markers on shoulders. Knit or pick up 6 sts from shoulder (3 sts both sides of the marker). Work back and forth as foll: K1 – P1 – K2 – P1 – K1. Pick up now 2 new sts from front, and work as foll: K1 – P2 – K1 – P2 – K1 – P1. Pick up 2 sts end of each row, and cont working back and forth in P2,K1 rib (= RS). Turn at each edge altog. 24 times. Pick now 3 sts at each edge until you reach the rib at lower edge. Pick now **1 st** altog. 3 times, and work K1,P1 rib over all sts = 6 rows in rib. Bind off in rib. Work same for the other side.

Collar: Using needles size 6 mm, pick or knit up approx. 68 sts along neck edge. Work in rnds 8 cm/3.1 in in K1,P1 rib. Inc 1 st

to each knit- and purl-stripe. Work in K2,P2 rib until collar measures 18 cm/7.1 in. Bind off rather loosely in rib.



Viking Camel

Long cardigan

1507-5

Size	S	M	L	XL
Bust:	95	105	115	125 cm
	37.4	41.4	45.2	49.2 in
Length:	85	85	87	87 cm
	33.5	33.5	34.3	34.3 in
Sleeve length:	50	50	51	51 cm
	19.7	19.7	20.1	20.1 in

ALTERNATIVE YARNS: Viking Camel-Luxury Fiber (78% camel fiber-22% nylon), Viking Hobbygarn (100% wool), 50 g ball

Light Grey, 213: 10 10 11 11 balls

Circular needle size 6 and 7 mm – US 10 and 10½ or 11 – UK/Canadian 4 and 2

Gauge: 15 sts = approx. 10 cm/4 in over patt using needles size 7 mm. **Check your gauge to ensure success.**

Back

Using needles size 7 mm, cast on 124-132-140-148 sts. Work back and forth in patt as foll: Patt A over 12 sts – Garter st over 7-8-9-10 sts – patt B over 4 sts – Garter st over 7-8-9-10 sts – patt C over 8 sts – Garter st over 7-8-9-10 sts – patt B – Garter st over 7-8-9-10 sts – patt A – Garter st over 7-8-9-10 sts – patt B – Garter st over 7-8-9-10 sts – patt C – Garter st over 7-8-9-10 sts – patt B – Garter st over 7-8-9-10 sts – patt A. Cont working back and forth as established. Dec 1 st in each Garter st panel approx. every 10-10-9-9 cm/4-4-3.5-3.5 in altog. 5-5-6-6 times. There is now 84-92-92-100 sts on a row. When work measures 85-85-87-87 cm/33.5-33.5-34.3-34.3in, bind off, or slip sts on holder (dec 1 st over cable patt).

Right front

Cast on 73-77-81-85 sts. Beg from RS, and work in patt as foll: Garter st over 5 sts (= frontband) – patt A – Garter st over 7-8-9-10 sts – patt B – Garter st over 7-8-9-10 sts – patt C – Garter st

over 7-8-9-10 sts – patt B – Garter st over 7-8-9-10 sts – patt A. Cont working back and forth as established. Dec 1 st in each Garter st pane (not frontband) approx. every 10-10-9-9 cm/4-4-3.5-3.5 in altog. 5-5-6-6 times. There is now 53-57-57-61 sts on a row. When work measures approx. 77-77-78-78 cm/30.3-30.3-30.7-30.7 in, bind off first 14-14-14-16 sts (inc frontband sts). Cont working back and forth same as before. Bind off at neck edge every 2nd row, 1x3 sts, 1x2 sts, and 1-2-2-2x1 st = 33-36-36-38 sts rem for shoulder. When front measures same as back, bind off, or leave sts on holder.

Work same for the other front, rev all shaping.

Sleeves

Using needles size 7 mm, cast on 34-36-38-40 sts. Work in rnds in patt as foll: Place a marker beg of rnd = mid under sleeve. Patt B – Garter st over 7-8-9-10 sts – patt A – Garter st over 7-8-9-10 sts – patt B. Cont working in rnds as established. Inc 1 st both sides of the marker approx. every 3 cm/1.2 in (same for all sizes) until there is altog. 66-68-72-74 sts on a rnd. Note! Work in patt same as for back over inc sts. When sleeve measures approx. 50-50-51-51 cm/ 19.7-19.7-20.1-20.1in, bind off (dec 1 st over cable patt).

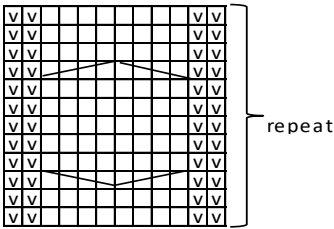
Work same for the other sleeve.

Finishing: Join shoulder seams. Sew side seams, leaving approx. 20-21-22-23 cm/7.9-8.3-8.7-9.1 in for armholes (measure width from sleeve top).

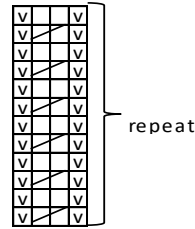
Neckband: Using needles size 6 mm, pick or knit up approx. 64-66-68-74 sts along neck edge. Work 6 rows in Garter st. Bind off knitwise on WS-row.

Sew on sleeves. Weave in all ends on WS.

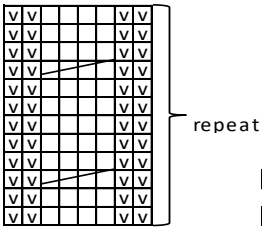
Pattern A



Pattern B



Pattern C



□ = knit (knit on Rs, purl on WS)

▣ = purl (purl on RS, knit on WS)

▤ = knit 2nd st, knit 1st st, slip sts on Rh needle

▥ = sl 2 sts on cn, and hold to back, K2, knit sts from cn

▦ = sl 2 sts on cn, and hold to front, K2, knit sts from cn

Back: Cont working back and forth in St st until work measures approx. 87 – 88 – 89 – 90 cm/34.3-34.6-35-35.4 in. Bind off 21 – 23 – 25 – 27 sts for each shoulder, and leave rem 28 – 28 – 30 – 30 mid sts on holder.

Right front: Cont working back and forth in St st, and rep inc same as before until front measures same as back. Bind off 21 – 23 – 25 – 27 sts for shoulder, and leave rem sts on holder.

Left front: Work same as for right front.

Sleeves: Using needles size 7 mm, cast on 48 – 48 – 48 – 48 sts. Work in rnds approx. 14 – 16 – 16 – 16 cm/5.5-6.3-6.3-6.3 in in patt A. Dec on last rnd as charted. Place a marker beg of rnd (= mid under sleeve). Cont working in rnds in St st. Inc 1 st both sides of the marker approx. every 2 – 1 ½ – 1 ½ – 1 ½ cm/0.8-0.6-0.6-0.6 in until there is 64 – 68 – 70 – 72 sts on a rnd, and sleeve measures approx. 48 – 49 – 50 – 52 cm/18.9-19.3-19.7-20.5 in. Bind off rather loosely.

Finishing: Sew shoulder seams.

Pockets: Pick up sts from both sides of the marker thread on 2 needles.

Pocket: Turn work upside down, and work downwards in St st until pocket measures approx. 14 cm/5.5 in, Bind off rather loosely.

Pocket edge: Work back and forth approx. 4 cm/1.6 in in Garter st. Bind off knitwise on WS-row.

Work same for the other pocket.

Sew pocket on WS.

Fold pocket edge downwards, and sew sides to front.

Neckband: Slip sts from back, and rem sts from both fronts on same needle size 7 mm. Work back and forth 12 rows in Garter st. Bind off.

Sew on sleeves.

Viking Camel

Long cardigan

1507-6

Size:	S - M - L - XL
Bust:	100 - 107 - 114 - 121 cm
	39.4 - 42 - 44.9 - 47.4 in
Length:	87 - 88 - 89 - 90 cm
	34.3 - 34.6 - 35 - 35.4 in
Sleeve length:	48 - 49 - 50 - 52 cm
	18.9 - 19.3 - 19.7 - 20.5 in

ALTERNATIVE YARNS: Viking Camel-Luxury Fiber (78% camel fiber-22% nylon), Viking Hobbygarn (100% wool), 50 g ball

Brown, 208: 9 - 9 - 10 - 10 balls

Knitting needles size 6 and 7 mm – US 10 and 10½ or 11 – UK/Canadian 4 and 2

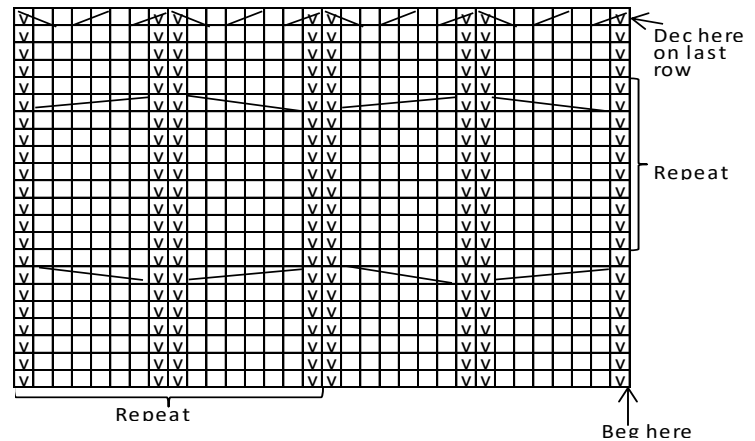
Gauge: 14 sts = approx. 10 cm/4 in over St st using needles size 7 mm. **Check your gauge to ensure success.**

Using needles size 7 mm, cast on 224 – 240 – 256 – 272 sts. Work back and forth in patt A. When work measures approx. 24 cm/9.4 in, dec as charted. Work in Garter st over first and last 5 sts (= frontbands), and St st over rem sts. There is now 140-150-160-170 sts on a row. Place markers at each side, 35 – 38 – 40 – 43 sts for each front, and 70 – 74 – 80 – 84 sts for back. Cont working back and forth in St st. Inc **same time** 1 st at each edge inside frontband sts. Rep inc every 2 cm/0.8 in.

When work measures approx. 30 cm/11.8 in, knit marker threads for pockets: Work 15 – 17 – 18 – 20 sts, knit next 20 sts with an extra yarn (= pocket), work until 35 – 37 – 38 – 40 sts rem, knit next 20 sts with an extra yarn (= pocket), knit rem sts.

When work measures approx. 64 cm/25.2 in, divide work at sidemarkers for armholes. Finish back first.

Pattern A



□ = Knit on RS, purl on WS

▣ = Purl on RS, knit on WS

▥ = Sl 3 sts on cn, and hold to back, K3, knit sts from cn

▦ = Sl 3 sts on cn, and hold to front, K3, knit sts from cn

▤ = K2tog

▧ = Sl 1 st, K1, pssso

Viking Camel

Sweater

1507-7

Size:	S - M - L
Bust:	100 -110 -120 cm
	39.4-43.3-47.2 in
Length, front:	60 -62 -64 cm
	23.6-24.4-25.2 in
Length, back:	72 -74 -76 cm
	28.3-29.1-29.9 in
Sleeve length:	48 -50 -52 cm
	18.9-19.7-20.5 in

ALTERNATIVE YARN: Viking Camel-Luxury Fiber (78% camel fiber-22% nylon), Viking Hobbygarn (100% wool), 50 g ball

Violet, 268:

7 - 7 - 8 balls

Knitting needles size 6 and 7 mm – US 10 and 10½ or 11 – UK/Canadian 4 and 2

Gauge: 14 sts = approx. 10 cm/4 in over St st using needles size 7 mm. **Check your gauge to ensure success.**

Pattern I

1st row (RS): X Sl 2 sts on cn, and hold to back, K1, knit sts from cn. Sl 1 st on cn, and hold to front, K2, knit sts from cn X, rep X-X.

2nd row (WS): Purl.

3rd row (RS): Knit.

4th row (WS): Purl.

5th row (WS): X Sl 1 st on cn, and hold to front, K2, knit st from cn. Sl 2 sts on cn, and hold to back, K1, knit sts from cn X, rep X-X.

6th row (WS): Purl.

7th row (RS): Knit.

8th row (WS): Purl.

Rep rows 1-8.

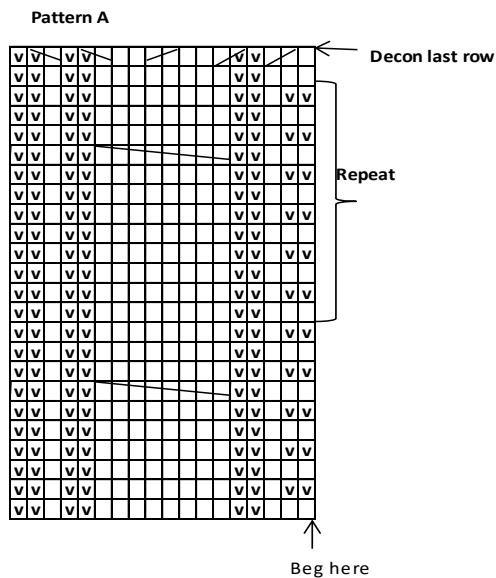
Back: Using needles size 7 mm, cast on 82 – 90 – 98 sts. Work as foll: Patt A over 18 sts, K2,P2 rib over next 14 – 18 – 22 sts, patt I over 18 sts, K2,P2 over next 14 – 18 – 22 sts, and end with patt B over rem 18 sts. Cont working back and forth as established. Note! Always knit 1st st. When work measures approx. 12 cm/4.7 in, cont working in St st over rib panels. When work measures approx. 72 – 74 – 76 cm/28.3-29.1-29.9 in, leave work aside, and knit the front.

Front: Work same as for back, **but** when work measures approx. 54 – 56 – 57 cm/21.3-22-22.4 in, slip 12 – 12 – 14 mid sts on holder for neck edge. Finish each side separately. Bind off at neck edge every 2nd row 1x5 sts, 1x2 sts, and 1x1 st. Cont working until front measures approx. 60 – 62 – 64 cm/23.6-24.4-25.2 in. Work same for the other side, rev all shaping.

Sleeves: Using needles size 6 mm, cast on 36 – 40 – 40 sts. Work in rnds approx. 12 cm/4.7 in in K2,P2 rib. Change to needles size 7 mm. Place a marker beg of rnd (= mid under sleeve). Work in St st, and inc 1 st on 1st rnd. Inc 1 st both sides of the marker approx. every 6 – 6 – 5 ½ cm/2.4-2.4-2.2 in until there is 50 – 54 – 56 sts on a rnd, and sleeve measures approx. 48-50-52 cm/18.9-19.7-20.5 in.

Finishing: Sew shoulder seams. Sew side seams, leaving approx. 10 cm/4 splits to the lower edge, and approx. 18 – 19 – 20 cm/7.1-7.5-7.9 in for armholes.

Collar: Beg from left shoulder, using needles size 6 mm, knit or pick up approx. 60-64-68 sts. Work in rnds approx. 14-16-16 cm/5.5-6.3-6.3 in in K2,P2 rib. Bind off in rib. Sew on sleeves.



□ = Knit on RS, purl on WS

◻ = Purl on RS, and knit on WS

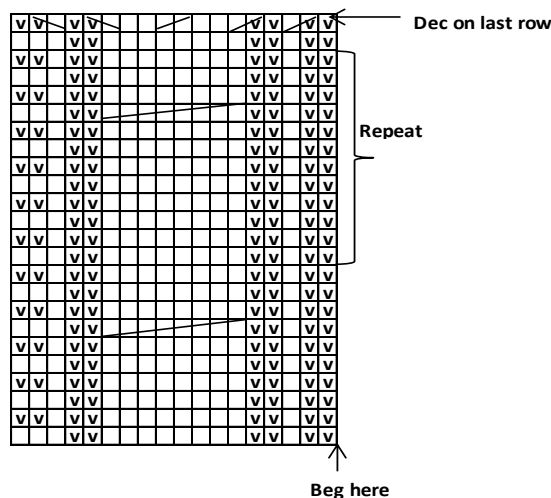
□□□□□□ = Sl 4 sts on cn, and hold to front, K4, knit sts from cn

◻◻◻◻◻◻ = Sl 4 sts on cn, and hold to back, K4, knit sts from cn

◻◻ = K2tog

◻ = Sl 1 st, K1, pssso

Pattern B



Viking Camel

Skirt

1507-8

Size: S/M

Width, lower edge: 210 cm/82.7 in

Length: approx. 45cm/17.7 in

ALTERNATIVE YARNS: Viking Camel-Luxury Fiber (78% camel fiber-22% nylon), Viking Hobbygarn (100% wool), 50 g ball

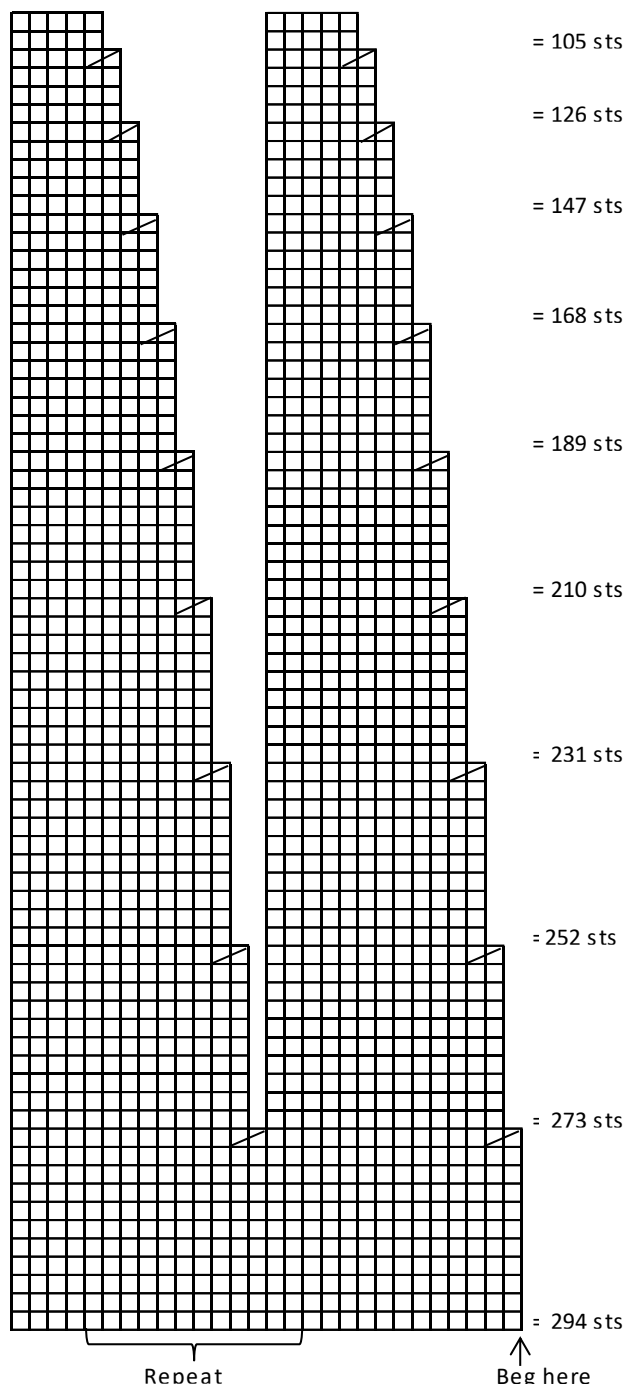
Light Grey, 213:

4 balls

Knitting needles size 6 and 7 mm – US 10 and 10½ or 11 – UK/Canadian 4 and 2

Gauge: 14 sts = approx. 10 cm/4 in over St st using needles size 7 mm. **Check your gauge to ensure success.**

Using needles size 6 mm, cast on 294 sts. Work in rnds approx. 5 cm/2 in in K3,P3 rib, purl 1 rnd (= folding edge). Change to needles size 7 mm. Work in St st, and dec as charted until work measures approx. 35 cm/13.8 in (measured from folding edge). Dec on last rnd 3 sts evenly across = 102 sts. Change to needles size 6 mm. Work in rnds approx. 10 cm/4 in in K3,P3 rib. Bind off in rib.



□ = St st
▤ = K2tog

Viking Camel

Sweater

1507-9

Size:	S – M – L – XL
Bust:	100 -110 -120 -130 cm 39.4-43.3-47.2-51.2 in
Length:	78 -80 -80 -82 cm 30.7-31.5-31.5-32.3 in
Sleeve length:	46 -48 -50 -52 cm 18.1-18.9-19.7-20.5 in

ALTERNATIVE YARNS: Viking Camel-Luxury Fiber (78% camel fiber-22% nylon), Viking Hobbygarn (100% wool), 50 g ball

Off-White, 202: 7 - 8 - 8 -9 balls

Knitting needles size 7 mm – US 10½ or 11 – UK/Canadian 2
+ 5 buttons

Gauge: 14 sts = approx. 10 cm/4 in over St st using needles size 7 mm. **Check your gauge to ensure success.**

Using needles size 7 mm, cast on 70 – 76 – 84 – 90 sts. Work back and forth approx. 9 cm/3.5 in in rib (= back). Leave work aside.

Using needles size 7 mm, cast on 70 – 78 – 84 – 92 sts. Work same as for back (= front).

Slip back and front on same circular needle. Work in rnds in patt A. Place markers at each side, and one mid back. When work measures approx. 46 – 47 – 47 – 49 cm/18.1-18.9-19.7-20.5 in, divide work 3 sts before the marker, and cont working back and forth (cable twists always on RS). Cast on 6 new sts to the end of the row, turn (these sts are for buttonband). Work K1,P1 rib over first and last 6 sts, patt A same as before. Make buttonholes inside 2 sts to right edge approx. every 6 cm/2.4 in. Buttonhole: Bind off 2 sts. Next row: Cast on 2 new sts over the bound-off ones. In order to avoid the sides turning too long, turn approx. every 10th row before the ribbed edge. When work measures approx. 59 – 60 – 59 – 60 cm/23.2-23.6-23.2-23.6 in, divide work at sides for armholes. Finish first right side of back.

Back, right side: Work same as before until back measures approx. 75 – 77 – 77 – 79 cm/29.5-30.3-30.3-31.1 in. Slip first 10 – 10 – 11 – 12 sts on holder for neck edge. Bind off at neck edge every 2nd row 2x4 sts. Work until back measures approx. 78 – 80 – 80 – 82 cm/30.7-31.5-31.5-32.3 in.

Back, left side: Work same as for right side, rev all shaping.

Front: Cont working back and forth same as before. When work measures approx. 75 – 77 – 77 – 79 cm/29.5-30.3-30.3-31.1 in, slip 14 – 16 – 16 – 20 mid sts on holder for neck edge. Finish each side separately. Bind off at neck edge every 2nd row 2x4 sts. Cont working until front measures same as back.

Work same for the other side, rev all shaping.

Sleeves: Using needles size 7 mm, cast on 28 – 30 – 30 – 32 sts. Work in rnds approx. 9 cm/3.5 in in K1,P1 rib. Place a marker beg of rnd (= mid under sleeve). Work in patt A, and **same time** inc 1 st both sides of the marker approx. every 2 ½ – 3 – 3 – 2 ½ cm/1-1.2-1.2-1 in until there is 54 – 56 – 58 – 62 sts on a rnd, and sleeve measures approx. 46-48-50-52 cm/18.1-18.9-19.7-20.5 in. Bind off.

Finishing: Join shoulder seams, 20 – 23 – 26 – 28 sts for each shoulder.

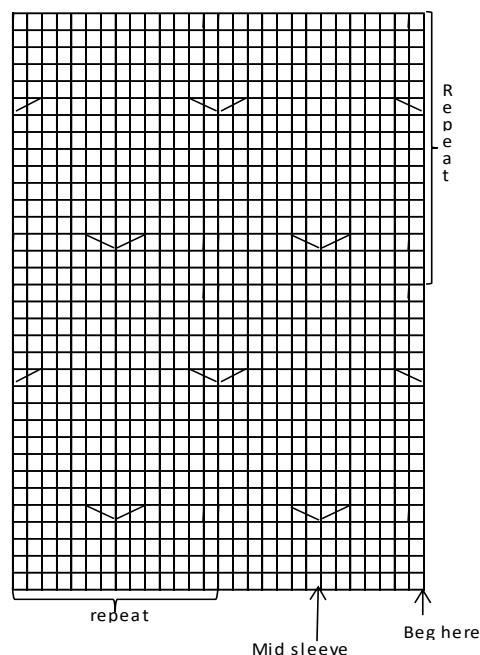
Neckband: Beg from right back, using needles size 7 mm, slip sts from holder on needle, pick or knit up approx. 54 – 54 – 55 – 58 sts from neck edge, and slip left back sts on needle. Work

back and forth approx. 3 cm/1.2 in in K1,P1 rib (remember to make last buttonhole). Bind off.

Finishing: Place buttonband under buttonhole band, and sew lower edge to body. Sew on 5 buttons.

Sew on sleeves.

Pattern A



- = Knit on RS, purl on WS
- ▤ = Knit 2nd st from front of 1st st, knit 1st st
- ▥ = Knit 2nd st from behind 1st st, knit 1st st

Viking Camel

Shawl

1507-10

Length: 190 cm/74.9 in

ALTERNATIVE YARNS: Viking Camel-Luxury Fiber (78% camel fiber-22% nylon), Viking Hobbygarn (100% wool), 50 g ball

Green, 243: 7 balls

Knitting needles size 7 mm – US 10½ or 11 – UK/Canadian 2
+ 3 buttons

Gauge: 14 sts = approx. 10 cm/4 in over St st using needles size 7 mm. **Check your gauge to ensure success.**

Using needles size 7 mm, cast on 88 sts. Work in K4,P4 rib. When work measures approx. 40 cm/15.7 in, make a buttonhole 4 sts inside the edge. Buttonhole: Bind off 3 sts. Next row: Cast on 3 new sts over the bound-off ones. Cont working same as before, and make 2 more buttonholes approx. 12 cm/4.7 in spaced apart. When work measures approx. 190 cm/74.9 in, bind off in rib. Sew on 3 buttons.

Viking Camel

Vest

1507-11

Size	S	M	L	XL	XXL
Bust:	75	80	85	90	95 cm
	29.5	31.5	33.5	35.4	37.4 in
Length:	54	54	56	56	56 cm
	21.3	21.3	22	22	22 in

ALTERNATIVE YARN: Viking Camel-Luxury Fiber (78% camel fiber-22% nylon), Viking Hobbygarn (100% wool), 50 g ball

Charcoal, 217: 3-3-4-4-4 balls
White, 202: 2-2-3-3-3 balls

Circular needle and double pointed needles size 6 and 7 mm – US 10 and 10½ or 11 – US/Canadian 4 and 2

Gauge: 16 sts = approx. 10 cm/4 in over St st using needles size 7 mm. **Check your gauge to ensure success.**

Using needles size 6 mm and charcoal yarn, cast on 120-128-136-144-152 sts. Work in rnds 4 cm/1.6 in in K1,P1 rib. Change to needles size 7 mm. Work 1 rnd in St st. Cont working in patt as charted. Place markers at each side, 61-65-69-73-77 sts for front and 59-63-67-71-75 sts for back. When work measures approx. 37-36-38-37-37 cm/14.6-14.2-15-14.6-14.6 in, bind off 8 sts at each side (4 sts both sides of the markers). Finish back and front separately.

Back

Cont working back and forth in St st and patt until work measures approx. 50-50-52-52-52 cm/19.7-19.7-20.5-20.5-20.5 in. End patt as charted (= approx. 4 cm/1.6 in). Armhole measures approx. 17-18-18-19-19 cm/6.7-7.1-7.1-7.5-7.5 in. Bind off.

Front

Work same as for front. When work measures approx. 45-45-47-47-47 cm/17.7-17.7-18.5-18.5-18.5 in, bind off 17-17-19-19-19 mid sts. Finish each side separately. Cont working back and forth, and bind off at neck edge every 2nd row 2x2 sts, and 2x1 st. When front measures same as back (Note! End patt same as for back), bind off. Work same for the other side, rev all shaping.

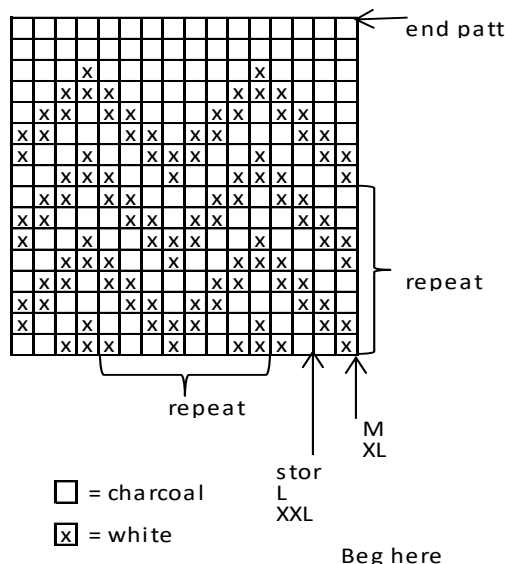
Finishing

Sew shoulder seams.

Neckband: Using needles size 6 mm and charcoal clr yarn, pick or knit approx. 72-72-76-76-76 sts along neck edge. Work in rnds 3 cm/1.2 in in K1,P1 rib. Bind off rather loosely in rib.

Armholebands: Using needles size 6 mm and charcoal clr yarn, pick or knit up approx. 64-64-68-68-68 sts. Work in rnds 3 cm/1.2 in in K1,P1 rib. Bind off in rib.

Weave in all ends on WS.



Viking Camel and Chicago

Sweater

1507-12

Size:	XS	S	M	L	XL
Bust:	88	96	104	112	120 cm
	34.6	38.8	41	44.1	47.2 in
Length:	69	70	71	72	72 cm
	27.2	27.6	28	28.3	28.3 in
Sleeve length:	47	48	49	50	51 cm
	18.5	18.9	19.3	19.7	20.1 in

ALTERNATIVE YARN: Viking Camel-Luxury Fiber (78% camel fiber-22% nylon), Viking Hobbygarn (100% wool), 50 g ball

Camel:

Okra, 253: 3 -4 -4 -5 -5 balls
Off-White 202: 2 -3 -3 -4 -4 balls

Chicago:

Gold, 384: 2 -2 -2 -2 -2 balls

Circular needle and double pointed needles size 6 and 7 mm – US 10 and 10½ or 11 – US/Canadian 4 and 2

Gauge: 14 sts = approx. 10 cm/4 in over St st using 7 mm. **Check your gauge to ensure success.**

Using needles size 6 mm, cast on 120-128-144-152-168 sts. Work in rnds 8 cm/3.1 in K2,P2 rib. Change to needles size 7 mm. Knit 1 rnd, and inc evenly to be 124-134-146-156-168 sts. Place markers at each side, 63-67-73-79-85 sts for front, and 61-67-73-77-83 sts for back. Cont working in St st with as foll: *3 rnds with gold, 8 cm/3.1 in with white, 3 rnds with gold, 8 cm/3.1 in with okra*, rep *-*. Place a marker round mid front st. When work measures 33-34-35-36-36 cm/ in, bind off mid front st for V-neck. Finish rnd. Break yarn, and beg from mid front. Cont working back and forth in St st with stripes same as before. Dec at both edges for V-neck as foll: 1 selvage st, K2tog, work until 3 sts rem, sl 1 st, K1, pssso, 1 selvage st. Rep dec every approx. every 2 cm/0.8 in. When work measures 46-46-46-46-45 cm/18.1-18.1-18.1-18.1-17.7 in, divide work at sides for armholes. Finish back and front separately.

Back

Cont working back and forth in St st with stripes until work measures 69-70-71-72-72 cm/27.2-27.6-28-28.3-28.3 in, and armhole measures approx. 23-24-25-26-27 cm/9.1-9.4-9.8-10.2-10.6 in. Bind off.

Right front

Work back and forth in St st with stripes, and rep dec until 18-20-22-25-28 sts rem. When front measures same as back, bind off.

Left front: Work same as for right front, rev all shaping.

Sleeves

Using needles size 6 mm and okra clr yarn, cast on 28-28-32-32-32 sts. Work in rnds 8 cm/1.6 in in K2,P2 rib. Change to needles size 7 mm. Knit 1 rnd, and inc evenly across number of sts to be 38 sts (same for all sizes). Place a marker mid under sleeve = beg of rnd. Cont working in St st with stripes, same as for body. Inc 1 st both sides of the marker approx. every 3-2 ½-2 ½-2-1.2-1-1-0.8-0.8 in until there is 64-68-70-74-76 sts on a rnd. When work measures approx. 47-48-49-50-51 cm/18.5-18.9-19.3-19.7-20.1 in, or as desired, bind off all sts rather loosely.

Work same for the other sleeve.

Finishing

Join shoulder seams.

V-neck

Beg from right shoulder, using needles size 6 mm and white yarn, pick or knit up 28-28-32-32-32 sts from back, approx 8 sts per 5 cm/2 in from left and right front + 1 st mid front of V-neck. Place markers rnd mid front st, and on shoulders. Work in rnds in St st, and dec 1 st every rnd both sides of mid front st, and every 2nd rnd both sides of shoulder markers. When neckband measures approx. 6 cm/2.4 in, change to okra clr yarn. Knit 1 rnd, and bind off all sts.

Sew on sleeves.

Weave in all ends on WS.

Dampen V-neck area slightly.

Viking Camel

Sweater

1507-13

Size:	XS – S – M – L – XL
Bust:	88 -96 -104 -112 -120 cm 34.6-38.8-41-44.1-47.2 in
Length:	69 -70 -71 -72 -72 cm 27.2-27.6-28-28.3-28.3 in
Sleeve length:	47 -48 -49 -50 -51 cm 18.5-18.9-19.3-19.7-20.1 in

ALTERNATIVE YARN: Viking Camel-Luxury Fiber (78% camel fiber-22% nylon), Viking Hobbygarn (100% wool), 50 g ball

Okra, 253:	6 -7 -7 -8 -8 balls
Off-White, 202:	1 -1 -1 -1 -1 ball

Circular needle and double pointed needles size 6 and 7 mm – US 10 and 10½ or 11 – UK/Canadian 4 and 2

Gauge: 14 sts = approx. 10 cm/4 in over St st using needles size 7 mm. **Check your gauge to ensure success.**

Using needles size 6 mm and okra clr yarn, cast on 120-128-144-152-168 sts. Work in rnds 12 cm/4.7 in in K5,P3 rib. Change to needles size 7 mm. Knit 1 rnd, and inc evenly across number of sts to be 124-134-146-156-168 sts. Place markers at each side, 63-67-73-79-85 sts for front, and 61-67-73-77-83 sts for back. Cont working in St st until body measures 33-34-35-36-36 cm/13-13.4-13.8-14.2-14.2 in. Bind off mid front st for V-neck. Finish rnd. Break yarn, and beg from mid front. Cont working

back and forth in St st, and dec for V-neck as foll: 1 selvage st, K2tog, work until 3 sts rem, sl 1 st, K1, pssso, 1 selvage st. Rep dec approx. every 2 cm/0.8 in. When work measures 46-46-46-46-45 cm/18.1-18.1-18.1-18.1-17.7 in, divide work at sides for armholes. Finish back and front separately.

Back

Cont working back and forth in St st until back measures 69-70-71-72-72 cm/27.2-27.6-28-28.3-28.3 in, and armhole measures approx. 23-24-25-26-27 cm/9.1-9.4-9.8-10.2-10.6 in. Bind off

Right front

Work back and forth in St st, and rep dec for V-neck same as before until 18-20-22-25-28 sts rem. When front measures same as back, bind off.

Left front

Work same as for right front, rev all shaping.

Sleeves

Using needles size 6 mm and white yarn, cast on 32 sts (same for all sizes). Work in rnds 2 cm/0.8 in in K5,P3 rib. Change to needles size 7 mm and okra clr yarn, and cont working in rib until work measures 18 cm/7.1 in. BUT place a marker after 6 cm/2.4 in mid under sleeve = beg of rnd. Inc 1 st both sides of the marker. Rep inc every 6 cm/2.4 in altog. 3 times = beg of rnd = 38 sts (same for all sizes). Change to needles size 7 mm. Cont working in rnds in St st. Inc 1 st both sides of the marker every 2-2-2- 1 ½- 1 ½ cm/0.8-0.8-0.8-0.6-0.6 in until there is 64-68-70-74-76 sts on a rnd. When work measures 47-48-49-50-51 cm/18.5-18.9-19.3-19.7-20.1 in, or as desired, bind off all sts rather loosely.

Work same for the other sleeve.

Finishing

Join shoulder seams.

V-neck

Beg from right shoulder, using needles size 6 mm and okra clr yarn, pick or knit up 28-28-32-32-32 sts along neck edge, and approx. 8 sts per 5 cm/2 in from left and right front + 1 st mid front of V-neck. Place markers on both shoulders, and round mid front st. Change to white yarn, and work in rnds 2 cm/0.8 in in St st. Dec same time 1 st both sides of mid front st, and every 2nd rnd both sides of the shoulder markers. Change to okra clr yarn, and work 2 cm/0.8 in – rep dec same as before. Change to white yarn, and work 2 cm/0.8 in – rep dec same as before. Bind off rather loosely.

Sew on sleeves.

Weave in all ends on WS.

Dampen slightly V-neck area.

Viking Camel

Infinity scarf and hat

1507-14

Size, hat:	Woman
Scarf:	approx. 20x160 cm/7.9x63 in

ALTERNATIVE YARNS: Viking Camel-Luxury Fiber (78% camel fiber-22% nylon), Viking Hobbygarn (100% wool), 50 g ball

Okra, 253:	4 balls
------------	---------

Circular needle size 6 and 7 mm – US 10 and 10½ or 11 – UK/Canadian 4 and 2

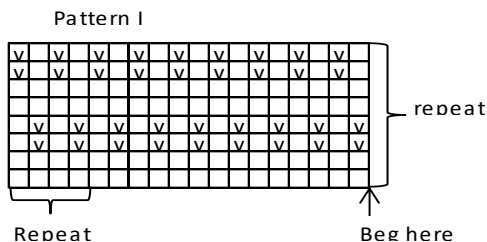
Gauge: 14 sts = approx. 10 cm/4 in over St st using needles size 7 mm. **Check your gauge to ensure success.**

SCARF

Using needles size 6 mm, cast on 224 sts. Work in rnds approx. 4 cm/1.6 in in K1,P1 rib. Change to needles size 7 mm, and work in patt I as charted until work measures approx. 30 cm/11.8 in. Change to needles size 6 mm, and work in rib same as for beg. Bind off in rib.

HAT

Using needles size 6 mm, cast on 60 – 64 – 68 sts. Work in rnds approx. 4 cm/1.6 in K1,P1 rib. Change to needles size 7 mm. Work in patt I as charted until work measures approx. 18-20-22 cm/7.1-7.9-8.7 in. Dec for crown: *Knit all sts tog in pairs. Work 1 rnd in St st*, rep *-* until 15 – 16 – 17 sts rem on a rnd. Break yarn, thread through rem sts, tighten the yarn slightly, and weave in on WS.



- = Knit
- = Purl

Viking Camel

Cowl, hat and wristies

1507-15**Size** Woman

ALTERNATIVE YARNS: Viking Camel-Luxury Fiber (78% camel fiber-22% nylon), Viking Hobbygarn (100% wool), 50 g ball

Charcoal, 217: 2 balls
White, 202: 2 balls

Circular needle size 6 and 7 mm – US 10 and 10½ or 11 – UK/Canadian 4 and 2

Gauge: 14 sts = approx. 10 cm/4 in over St st using needles size 7 mm. **Check your gauge to ensure success.**

COWL

Using needles size 7 mm and charcoal clr yarn, cast on 90 sts. Work in rnds 3 cm/1.2 in in K1,P1 rib. Cont working in patt until work measures approx. 37 cm/14.6 in. End as charted, and work approx. 3 cm/1.2 in in K1,P1 rib with charcoal clr yarn. Bind off in rib.

HAT

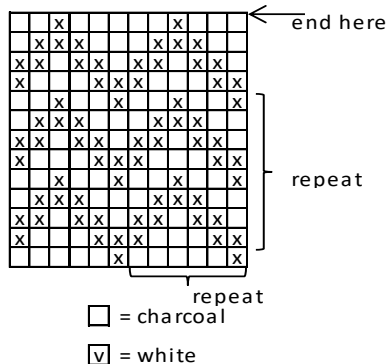
Using needles size 7 mm and charcoal yarn, cast on 64 sts. Work in rnds in St st until hat measures approx. 20 cm/7.9 in. Dec for crown as foll: *Knit all sts tog in pairs. Knit 1 rnd*, rep *-* until 16 sts rem on a rnd. Break yarn, thread through rem sts, tighten yarn slightly, and weave in on WS.

WRISTIES

Using needles size 6 mm and charcoal clr yarn, cast on 32 sts. Work 3 cm/1.2 in in K1,P1 rib. Change to needles size 7 mm. Work in rnds in patt as charted. Note! Knit patt only once in

height (3 zig zags). Cont working in St st with charcoal yarn until work measures 17 cm/6.7 in. Change to needles size 6 mm. Work 3 cm/1.2 in in K1,P1 rib with charcoal clr yarn. Bind off in rib.

Work same for the other wristie.



Viking Camel

Scarf

1507-16**Size** Woman

Length: 180 cm/70.9 in

ALTERNATIVE YARN: Viking Camel-Luxury Fiber (78% camel fiber-22% nylon), Viking Hobbygarn (100% wool), 50 g ball

Burgundy, 262: 3 balls

Knitting needles size 6 and 7 mm – US – UK/Canadian

Gauge: 14 sts = approx. 10 cm/4 in over St st using needles size 7 mm. **Check your gauge to ensure success.**

SCARF

Using needles size 7 mm, cast on 24 sts. Knit 1 row. Work in lace patt as foll:

1st row from RS: K3, *1 yo – K2tog*, rep *-* across the row until 3 sts rem, K3.

2nd row from WS: Work same as for 1st row.

Cont working back and forth in lace patt until scarf measures approx. 180 cm/70.9 in. Bind off knitwise on WS-row.

Tie approx. 12 fringes to each end, length approx. 10 cm/4 in.

HAT

Using needles size 6 mm, cast on 64 sts. Work 3 cm/1.2 in in K1,P1 rib. Change to needles size 7 mm. Work in St st until hat measures approx. 18 cm/7.1 in. Dec for crown every 2nd rnd as foll: *K6, K2tog*, rep *-* across the rnd. Rep dec with 1 st less between each dec until 16 sts rem on a rnd. Knit all sts tog in pairs. Break yarn, thread through rem sts, and weave in end on WS.

Viking Camel

Cowl and hat

1507-17

Size, hat: Woman
Size, cowl: 25x77 cm/9.8x30.3 in

ALTERNATIVE YARN: Viking Camel-Luxury Fiber (78% camel fiber-22% nylon), Viking Hobbygarn (100% wool), 50 g ball

Charcoal, 217: 2 balls
Off-white, 202: 1 ball

Circular needle size 7 mm – US 10½ or 11 – UK/Canadian 2
+ 3 buttons

Gauge: 14 sts = approx. 10 cm/4 in over St st using needles size 7 mm. **Check your gauge to ensure success.**

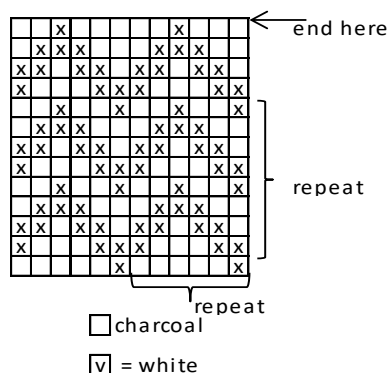
COWL

Using needles size 7 mm and charcoal yarn, cast on 33 sts. Work back and forth approx. 7 cm/2.8 in in K3,P3 rib. Cont working in K2,P2 rib over first and last 4 sts, and St st over rem sts. When cowl measures approx. 70 cm/27.6 in, work in K3.P3 rib over all sts until work measures approx. 77 cm/30.3 in. Bind off in rib.

Finishing: Fasten cast-on edge to left side, over last 25 cm/9.8 in with 3 buttons.

HAT

Using needles size 6 mm and charcoal yarn, cast on 64 sts. Work 3 cm/1.2 in in K1,P1 rib. Change to needles size 7 mm. Work in St and patt as charted until work measures approx. 18 cm/7.1 in (end at charted). Cont working in St st with charcoal clr yarn, and dec for crown every 2nd rnd: *K6, K2tog*, rep *-* across the rnd. Rep dec with 1 st less between each dec until 16 sts rem. Knit all sts tog in pairs. Break yarn, thread through rem sts, and weave in end on WS.



Viking Camel

Long cardigan

1507-18

Size	S	M	L	XL
Bust:	95	105	115	125 cm
	37.4	41.4	45.2	49.2 in
Length:	86	88	88	90 cm
	33.9	34.6	34.6	35.4 in
Sleeve length:	50	50	51	51 cm
	19.7	19.7	20.1	20.1 in

ALTERNATIVE YARN: Viking Camel-Luxury Fiber (78% camel fiber-22% nylon), Viking Hobbygarn (100% wool), 50 g ball

Dark Grey, 215: 7 8 9 9 balls
Okra, 253 2 2 2 3 balls

Circular needle and double pointed needles size 7 mm – US 10½ or 11 – UK/Canadian 2

Gauge: 15 sts = approx. 10 cm/4 in over patt using needles size 7 mm. **Check your gauge to ensure success.**

Using needles size 7 mm and dark grey yarn, cast on 142-158-170-186 sts. Work back and forth in patt A as charted until work measures approx. 20 cm/7.9 in (same for all sizes). Cont working in patt B as charted until work measures approx. 61-63-63-65 cm/24-24.8-24.8-25.6 in. Beg V-neck dec. Dec 1 st at each edge inside 1 selvage st. Rep dec every 4th row. When work measures approx. 65-66-65-66 cm/25.6-26-25.6-26 in, divide work at sides, 72-80-86-94 sts for back, and 35-39-42-46 sts for both fronts. Finish back and fronts separately.

Back

Cont working back and forth in patt B until back measures 86-88-88-90 cm/33.9-34.6-34.6-35.4 in, and armhole measures approx. 21-22-23-24 cm/8.3-8.7-9.1-9.4 in. Bind off.

Right front

Work same as for back, and rep V-neck until there is altog. 12-12-13-13 dec. When front measures same as back, bind off. Work same for left front, rev all shaping.

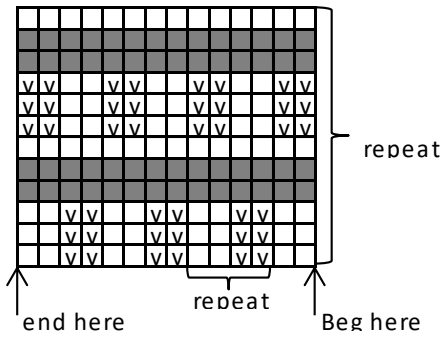
Sleeves

Using needles size 7 mm and grey yarn, cast on 28-28-32-32 sts. Work in patt A, rep three times. Place a marker beg of rnd = mid under sleeve. Cont working in patt B, and inc 1 st both sides of the marker approx. every 3-2 ½ - 2 ½ - 2 ½ cm/1.2-1-1-1 in. When sleeve measures 58-58-59-59 cm/22.8-22.8-23.2-23.2 in (measured from cast-on edge = 8 cm/3.1 in folded), and there is altog. 62-66-68-70 sts on a rnd, bind off.

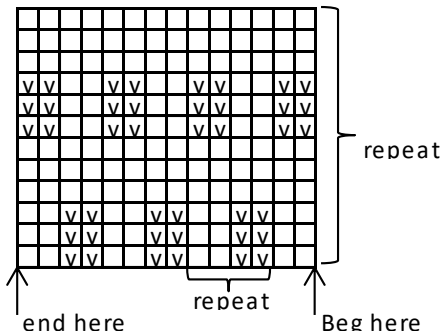
Finishing: Sew shoulder seams.

Sew on sleeves. Weave in all ends on WS.

Pattern B



Pattern A



- = knit with dark grey (knit on RS, purl on WS)
- ▣ = purl with dark grey (purl on RS, knit on WS)
- = knit with okra (knit on RS, purl on WS)

Viking Camel

Long cardigan

1507-19

Size:	S - M - L - XL
Bust:	100 -107 -114 -121 cm 39.4-42.2-44.8-47.6 in
Length:	77 -78 -79 -80 cm 30.3-30.7-31.1-31.5 in
Sleeve length:	46 -47 -48 -49 cm 18.1-18.5-18.9-19.3 in

ALTERNATIVE YARN: Viking Camel-Luxury Fiber (78% camel fiber-22% nylon), Viking Hobbygarn (100% wool), 50 g ball

Violet, 268: 6 - 7 - 7 - 8 balls

Knitting needles size 6 and 7 mm – US 10 and 10½ or 11 – UK/Canadian 4 and 2

+ 7 buttons

Gauge: 14 sts = approx. 10 cm/4 in over St st using needles size 7 mm. **Check your gauge to ensure success.**

Pattern A

1st row: P1, *sl 1 st tbl with yarn on back, K2, draw slipped st over 2 knit-sts and P2*, rep *-* and P1.
2nd row: K1, *P1, 1 yo, P1 and K2*, rep *-* and end with P1.
3rd row: P1, *K3, 2P*, rep *-* and end with P1.
4th row: K1.*P3, K2*, rep *-* and end with K1.
 Rep these 4 rows.

Using needles size 7 mm, cast on 149 – 159 – 169 – 179 sts. Work as foll: Garter st over 7 sts (= right frontband), P1, *K3, P2*, rep *-*, and end with P1, and Garter st over 7 sts (= left frontband). Cont working back and forth as established until work measures approx. 12 cm/4.7 in. Cont as foll: Garter st over 7 sts, patt A over next 135 – 145 – 155 – 165 sts, and end with Garter st over 7 sts. Cont working as established, and **same time** make a buttonhole approx. every 9 – 9 – 9 ½ – 9 ½ cm/3.5-3.5-3.7-3.7 in. Make 1st buttonhole on first row after rib, and rem evenly spaced apart. Buttonhole, inside 3 sts from front edge: Bind off 2 sts. Next row: Cast on 2 new sts over the bound-off ones. Place markers at each side, 39 – 42 – 44 – 47 sts for both fronts, and 71-75-81-85 sts for back.

When work measures approx. 58 cm/ in (same for all sizes), divide work at sides for armholes. Finish first back.

Back: Work in patt A same as before until back measures approx. 77 – 78 – 79 – 80 cm/30.3-30.7-31.1-31.5 in. Bind off for shoulders at each edge 23 – 25 – 27 – 29 sts, and slip rem 25 – 25 – 27 – 27 sts on holder for neck edge.

Right front: Work same as for back. When front measures approx. 67 – 68 – 69 – 70 cm/26.4-26.8-27.2-27.6 in, slip first 7 – 7 – 7 – 8 sts on holder. Bind off at neck edge every 2nd row 1x4 sts, 2x2 sts, and 1-2-2-2x1 st. Work until front measures same as back.

Left front: Work same as right front, rev all shaping.

Sleeves: Using needles size 6 mm, cast on 28 – 28 – 32 – 32 sts. Work in rnds approx. 10 cm/4 in in K2,P2 rib. Change to needles size 7 mm. Work in St st. Place a marker beg of rnd. Inc 1 st both sides of the marker approx. every 3 – 2 ½ – 2 ½ – 2 ½ cm/1.2-1-1-1 in until there is 52 – 56 – 60 – 62 sts on a rnd, and sleeve measures approx. 46 – 47 – 48 – 49 cm/18.1-18.5-18.9-19.3 in. Bind off.

Finishing: Join shoulder seams.

Neckband: Using needles size 6 mm, pick or knit up approx. 68 – 72 – 76 – 76 sts. Work 1 row in St st, and after that Garter st over first and last 7 sts, and K2,P2 rib over rem sts (remember last buttonhole). When neckband measures approx. 4 cm/1.6 in, bind off, knit-sts knitwise, and purl-sts in purlwise.

Sew on sleeves.