

Viking VÅR

Cardigan

1505-1

Size:	S-M-L-XL
Bust:	96 - 104 - 112 - 120 cm 38.8-41-44.1-47.2 in
Length:	50 - 51 - 52 - 54 cm 19.7-20.1-20.5-21.3 in
Sleeve length:	48 - 50 - 51 - 52 cm 18.9-19.7-20.1-20.5 in

ALTERNATIVE YARN: Viking Vår (100% cotton), 50 g ball

White, 400: 16 - 17 - 18 - 19 balls

Knitting needles size 3½ and 4 mm – US 4 and 6 – UK/Canadian 10 or 9 and 8
+ 1 zipper

Gauge: 20 sts = approx. 10 cm/4 in over St st using needles size 4 mm. 16 sts = approx. 10 cm/4 in over patent patt using needles size 4 mm.

Check your gauge to ensure success.

FISHERMAN'S RIB, worked in rnds:

1st rnd: *K1, sl 1 st as if to purl, 1 yo*, rep *-*.

2nd rnd: *Sl knit-st as if to purl, 1 yo, purl tog yo and purl-st*, rep *-*.

3rd rnd: *Ktog yo and slipped st, 1 yo, sl 1 st as if to purl*, rep *-*.

Rep 2nd and 3rd rnd.

Using needles size 3½ mm, cast on 183 – 199 – 215 – 231 sts. Work as foll: Garter st over 3 sts = right front band, K1,P1 rib over next 177 – 193 – 209 – 225 sts, and end with Garter st over last 3 sts = left front band. Cont working back and forth as established until work measures approx. 6 cm/2.4 in. Change to needles size 4 mm. Purl 1 rnd from WS, and inc evenly across the number of sts to be 288 – 320 – 352 – 384 sts (not over front band sts). There is now 294 – 326 – 358 – 390 sts on a row. Cont working back and forth with Garter st over 3 sts, patt A over next 288 – 320 – 352 – 384 sts, and end with Garter st over 3 sts.

Place markers at each side, 75 – 83 – 91 – 99 sts for both fronts, and 144 – 160 – 176 – 192 sts for back.

When work measures approx. 31 – 31 – 31 – 32 cm/12.2-12.2-12.2-12.6 in, divide work at sides for armholes (cable twists always take place on RS-row). Finish back first.

Back: Cont working until work measures approx. 50 – 51 – 52 – 54 cm/19.7-20.1-20.5-21.3-in. Work 1 row over all sts, and dec as charted. Bind off 27 – 32 – 36 – 41 sts for each shoulder, and slip 36 – 36 – 38 – 38 sts on holder for neck edge.

Right front: Work same as for back (+ front bands), but when work measures approx. 44 – 45 – 45 – 47 cm/17.3-17.7-17.7-18.5 in, slip first 23 – 23 – 24 – 24 sts on holder. Bind off at neck edge every 2nd 1x3 sts, 2x2 sts, and 2x1 st. When front measures same as back, dec on last row as charted.

Left front: Work same as for right front, but rev all shaping.

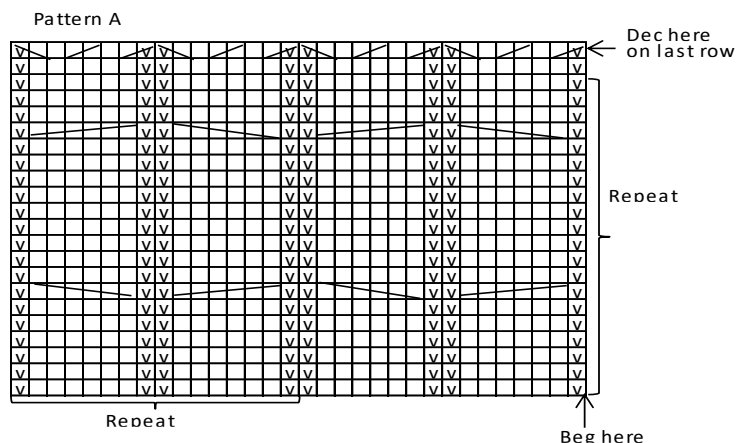
Sleeves: Using needles size 3½ mm, cast on 36 – 38 – 40 – 42 sts. Work in rnds approx. 5 cm/2 in in K1,P1 rib. Change to needles size 4 mm. Inc 1 st on first rnd. Cont working in rnds in Fisherman's rib. Place a marker beg of rnd (= mid under sleeve). Inc 1 st both sides of the marker approx. every 3½ – 3½ – 3½ – 3 cm/1.4-1.4-1.4-1.2 in until there is 61 – 63 – 67 – 71 sts on a rnd, and sleeve measures approx. 48 – 50 – 51 – 52 cm/ 18.9-19.7-20.1-20.5 in. Work 1 rnd over all sts in K1,P1 rib. Bind off.

Work same for the other sleeve.

Finishing: Sew shoulder seams.

Neckband: Beg from right front, using needles size 3½ mm, knit up sts from neck edge as foll: Garter st over first 3 sts, dec as charted over next 20 sts (= 12 sts), pick up approx. 10 – 10 – 12 – 13 sts from front neck edge, knit 36 – 36 – 38 – 38 sts from back, pick up approx. 11 – 11 – 13 – 14 sts from left front neck edge, dec as charted over next 20 sts (= 12 sts), and end with Garter st over 3 sts. There is now 87 – 87 – 93 – 95 sts on a row. Cont working back and forth in Garter st over 3 sts at each edge, and K1,P1 rib over rem sts. When neckband measures approx. 16 cm/6.3 in, bind off in rib. Fold neckband in double, and sew on WS.

Finishing: Sew on sleeves and zipper.



□ = Knit on RS, purl in WS

▣ = Purl on RS, knit on WS

▤ = Sl 3 sts on cn, and hold to back. K3, knit sts from cn

▥ = Sl 3 sts on cn, and hold to front. K3, knit sts from cn

▧ = K2tog

▨ = Sl 1 st. K1, pssso

Viking Vår

Skirt

1505-2

Size:	S	M	L
Hips:	97	105	112 cm 38.2-41.2-44.1 in
Waist:	78	84	90 cm 30.7-33.1-35.4 in
Length:	40	43	45 cm 15.7-16.9-17.7 in

ALTERNATIVE YARN: Viking Vår (100% cotton), 50 g ball

Beige, 407: 8-9-10 balls

Circular needle size 4 mm – US 6 – UK/Canadian 8 + zipper, 10-12 cm/4-4.7 in (measure length from ready garment).

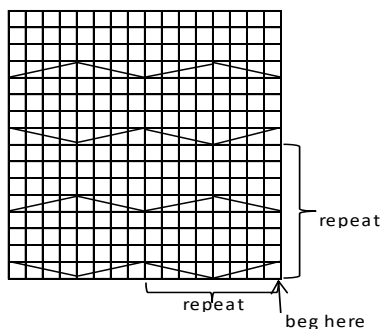
Gauge: 20 sts = approx. 10 cm/4 in over St st using needles size 4 mm. **Gauge:** 32 sts = approx. 10 cm/4 in over cable patt using needles size 4 mm.

Check your gauge to ensure success.

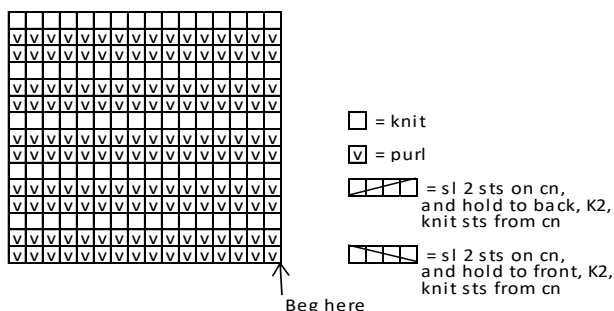
Beg from lower edge. Using needles size 4 mm, cast on 208-224-240 sts. Work in patt I as charted. When patt I is ready, work 1 rnd in St st, and inc 1 st into evrt 2nd st across the rnd = 312-336-360 sts. Cont working in patt II until work measures approx.

30-33-35 cm/ in (Note! End cable patt with 1 rnd in St st after last cable twist). Work 1 rnd in St st, and knit all sts tog in pairs = 156-168-180 sts. Divide work mid back, and cont working back and forth in patt I until work measures 40-43-45 cm/15.7-16.9-17.7 in. Bind off. Sew on zipper.

PATTERN II



PATTERN I



Viking Vår Cardigan

1505-3

Size: XS-S-M-L-XL-XXL

Bust: 92-98-108-114-126-132 cm

36.2-38.6-42.5-44.8-49.6-51.9 in

Length: 70-72-74-75-76-77 cm

27.6-28.3-29.1-29.5-29.9-30.3 in

Sleeve length: 49-50-50-51-51-52 cm

19.3-19.7-19.7-20.1-20.1-20.5 in

ALTERNATIVE YARNS: Viking Vår (100% cotton), 50 g ball

Light Blue, 420: 16-17-17-18-18-19 balls

Circular needle and double pointed needles size 3 ½ and 4 mm – US 4 and 6 – UK/Canadian 10 or 9 and 8

Gauge: 20 sts = approx. 10 cm/4 in over St st using needles size 4 mm.

Check your gauge to ensure success.

Back

Using needles size 3 ½ mm, cast on 92-98-108-114-126-132 sts. Knit 1 row. Change to needles size 4 mm, and cont working in St st (Note! Knit first and last st every row = selvage st). Cont working until work measures approx. 50-51-52-53-53-53 cm/19.7-20.1-20.5-20.5-20.9-20.9-20.9 in. Bind off at each edge every 2nd row 1x5 sts, and 2x1 sts for armholes = 78-84-94-100-112-118 sts rem on a row. Cont working until work measures approx. 70-72-74-75-76-77 cm/27.6-28.3-29.1-29.5-29.9-30.3 in, and armhole measures approx. 20-21-22-22-23-24 cm/7.9-8.3-8.7-8.7-9.1-9.4 in. Bind off.

Right front

Using needles size 3 ½ mm, cast on 63-66-71-74-80-82 sts. Knit 1 row. Change to needles size 4 mm. Beg from RS, K1 (= selvage st), work in patt as carted over 30 sts, and St st over rem sts, (Note! Knit last st every row = selvage st). Cot working as established until work measures approx. 50-51-52-53-53-53 cm/19.7-20.1-20.5-20.9-20.9-20.9 in. Beg from WS, and bind off every 2nd row 1x5 sts, and 2x1 st. There is now 56-59-64-67-73-75 sts on a row. Cont working until front measures same as back. Slip first 31 sts on holder, and bind off rem 25-28-33-36-42-44 sts

Work same for left front, but in reverse.

Sleeves

Using needles size 3 ½ mm, cast on 44-44-46-46-48-48 sts. Purl 1 rnd. Change to needles size 4 mm. Cont working in rnd in St st. Place a marker beg of rnd = mid under sleeve. Inc 1 st both sides of the marker approx. every 2 ½ - 2 ½ - 2 - 2 - 2 - 2 cm/1-1-0.8-0.8-0.8 in until there is altog. 80-84-88-88-92-96 sts on a rnd. When work measures the given length, or as desired, bind off 10 sts mid under sleeve (= 5 sts both sides of the marker). Cont working back and forth, and bind off at each edge every 2nd row 2x1 st = 66-70-74-74-78-82 sts rem. Bind off.

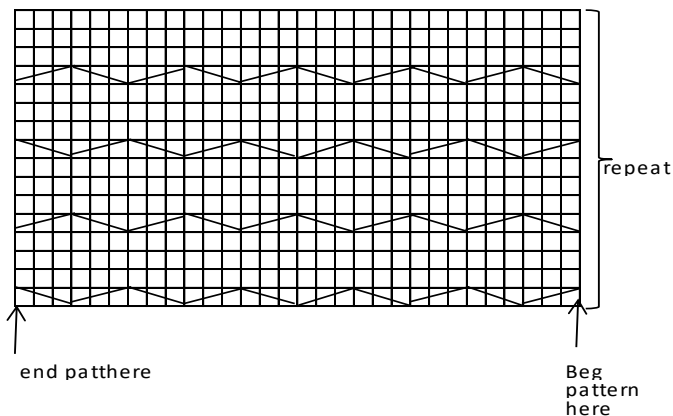
Work same for the other sleeve.

Finishing.

Sew shoulder seams.

Sew side seams using selvage sts as seam allowances.

Front band/Collar: Slip sts from holder on needles size 4 mm, and cont working back and forth in patt until collar measures approx. 8-8-9-9-9-10 cm/3.1-3.1-3.5-3.5-3.5-4 in = until mid back. Slip sts on holder. Work same for the other side. Join collar seam mid back, and sew on neck edge. Sew on sleeves. Weave in all ends on WS.



□ = St st

▧ = sl 2 sts on cn, and hold to back, K1, knit sts from cn

▨ = sl 1 st on cn, and hold to front, K2, knit st from cn

Viking VÅR

Sweater

1505-4

Size:	S/M -L/XL
Bust:	92 - 120 cm 36.2-47.2 in
Length:	66 - 68 cm 26-26.8 in
Length:	48 - 50 cm 18.9-19.7 in

ALTERNATIVE YARN: Viking Vår (100% cotton), 50 g ball

Ocra, 445: 15 - 20 balls

Knitting needles size 3½ and 4 mm – US 4 and 6 – UK/Canadian 10 or 9 and 8

Gauge: 20 sts = approx. 10 cm/4 in over St st using needles size 4 mm.

Check your gauge to ensure success.

Using needles size 3 ½ mm, cast on 184 – 240 sts. Work in 6 rnds in Garter st + knit 1 rnd. Place markers at each side, 92 – 120 sts for both back and front. Change to needles size 4 mm. Beg from left side as foll: *inc evenly across over first 37-51 sts number of sts to be 64 – 88 sts, patt B over next 18 sts, **but** inc 4 sts over 6 mid sts = 22 sts for patt B, inc evenly across over next 37-51 sts number of sts to be 64 – 88 sts* = front. Rep *-* = back. There is now 300 – 396 sts on a rnd. Next rnd: Patt A over first 64 – 88 sts, patt B over next 22 sts, patt A over next 128 – 176 sts, patt B over 22 sts, and end with patt A over last 64 – 88 sts. Cont working as established.

When patt A is ready (rep as charted), dec across next rnd as foll: Dec evenly across first 64-88 sts (= patt A) number of sts to be 37 – 51 sts, cont working in St st over these sts, patt B same as before, dec evenly across next 128-176 sts (= patt A) number of sts to be 74 – 102 sts, cont working in St st over these sts, patt B same as before, and dec evenly across last 64-88 sts (= patt A) number of sts to be 37 – 51 sts, cont working in St st over these sts. Change to needles size 4 mm. There is now 192 – 248 sts on a row. Cont working as established (patt B mid front and back, and St st over rem sts) until 5 rnds rem of patt B. Work now Seed st instead of St st over the sts in St st-panels.

Bind off on last rnd 10 sts at each side for armholes (5 sts both sides of the markers). Leave work aside, and knit the sleeves.

Sleeves:

Using needles size 3 ½ mm, cast on 40 – 46 sts. Work 12-18 rnds in Garter st + knit 1 rnd. Place a marker beg of rnd (= mid under sleeve). Inc on next rnd as foll: Inc evenly across first 10-14 sts number of sts to be 16 – 24 sts, patt B over next 18 sts, **but** inc 4 sts over 6 mid sts = 22 sts for patt B, and inc evenly across last 10-14 sts number of sts to be 16 – 24 sts. There is now 54 – 70 sts on a rnd. Next rnd: Patt A over 16 – 24 sts, patt B over next 22 sts, and patt A over last 16 – 24 sts.

When patt A is ready (rep as charted), dec on next rnd as foll: Dec evenly across first 16-24 sts number of sts to be 12 – 16 sts, and cont working in St st over these sts. Work in patt B same as before, and dec evenly across last 16-24 sts number of sts to be 12 – 16 sts, and cont working in St st over these sts. Change to needles size 4 mm. There is now 46 – 54 sts on a rnd. Cont working as established, and inc **same time** 1 st both sides of the marker mid under sleeve approx. every 2 cm/0.8 in (same for all sizes) until there is 88 – 100 sts on a rnd, and you have finished patt B (work 5 last rnds in Seed st, same as for body). Bind off

on last rnd 10 sts mid under sleeve (5 sts both sides of the marker).

Yoke:

Slip all pieces on same circular needle size 4 mm, with sleeves over bound-off armhole sts = 328 – 408 sts on a rnd.

Beg after patt B from right sleeve, and inc as charted for patt C over next 60 – 80 sts worked in St st (= 3 – 4 patt C reports). Inc 1 purl-st both sides of patt B mid back = 24 sts for patt C.

Work and inc as charted for patt C over next 60 – 80 sts worked in St st. Inc 1 purl-st both sides of patt B mid left sleeve = 24 sts for patt C.

Work and inc as charted for patt C over next 60 – 80 sts worked in St st. Inc 1 purl-st both sides of patt B mid front = 24 sts for patt C.

Work and inc as charted for patt C over next 60 – 80 sts worked in St st. Inc 1 purl-st both sides of patt B mid right sleeve = 24 sts for patt C.

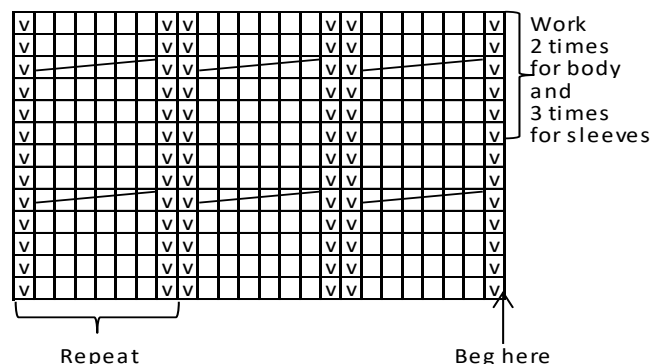
There is now 384 – 480 sts on a row, altog. 16 – 20 patt C reports. Work and dec as charted.

There is now 96 – 120 sts on a rnd.

Neckband:

Change to needles size 3 ½ mm. Work in rnds approx. 5 – 6 cm/2-2.4 in in K1,P1 rib. Bind off rather loosely in rib.

Pattern A

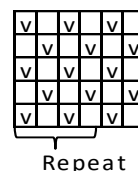


□ = knit

▣ = purl

▣▣▣ = sl 3 sts on cn, and hold to back, K3, knit sts from cn

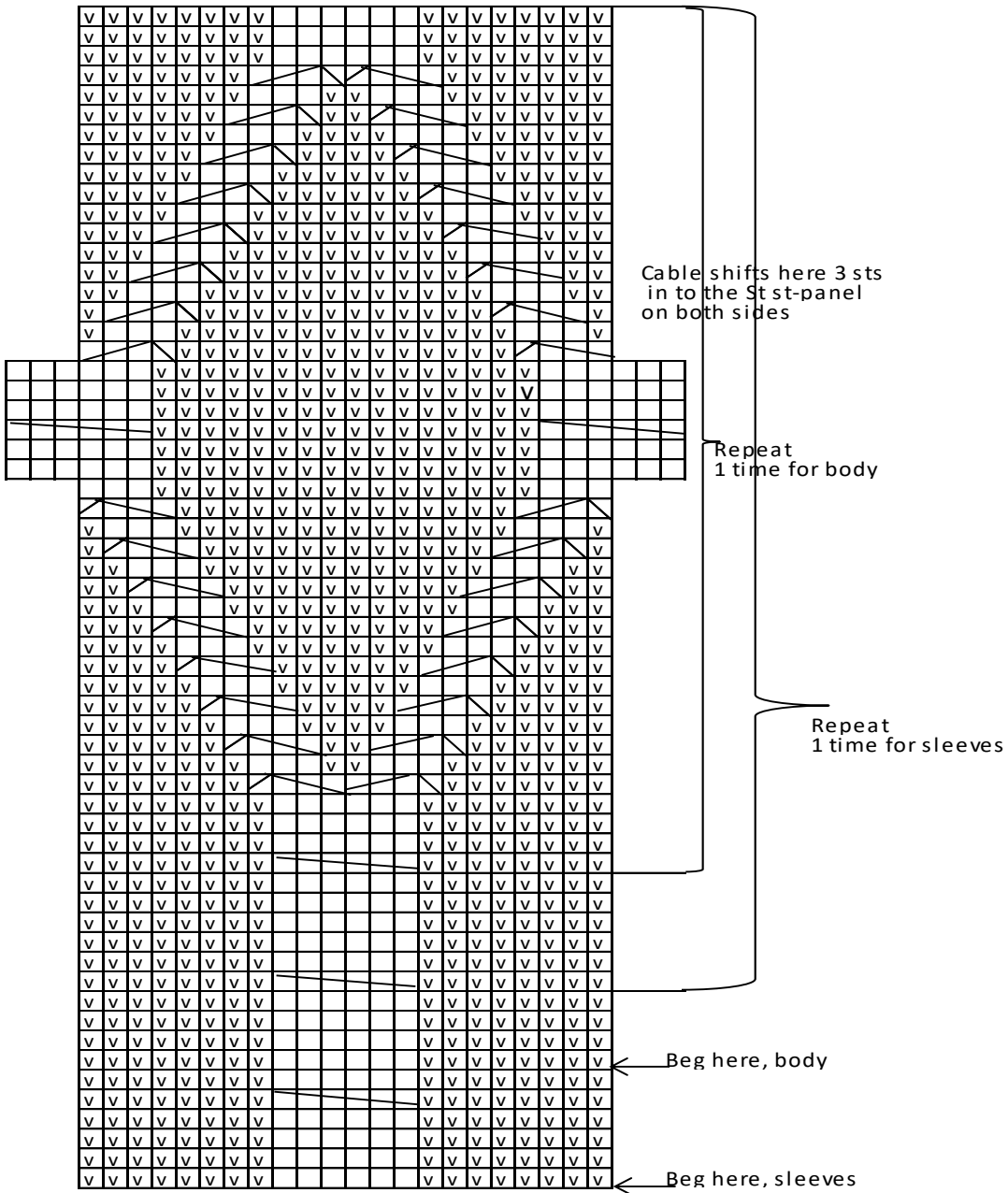
Seed st





□ = Knit


▣ = Purl


Pattern B




 = Purl

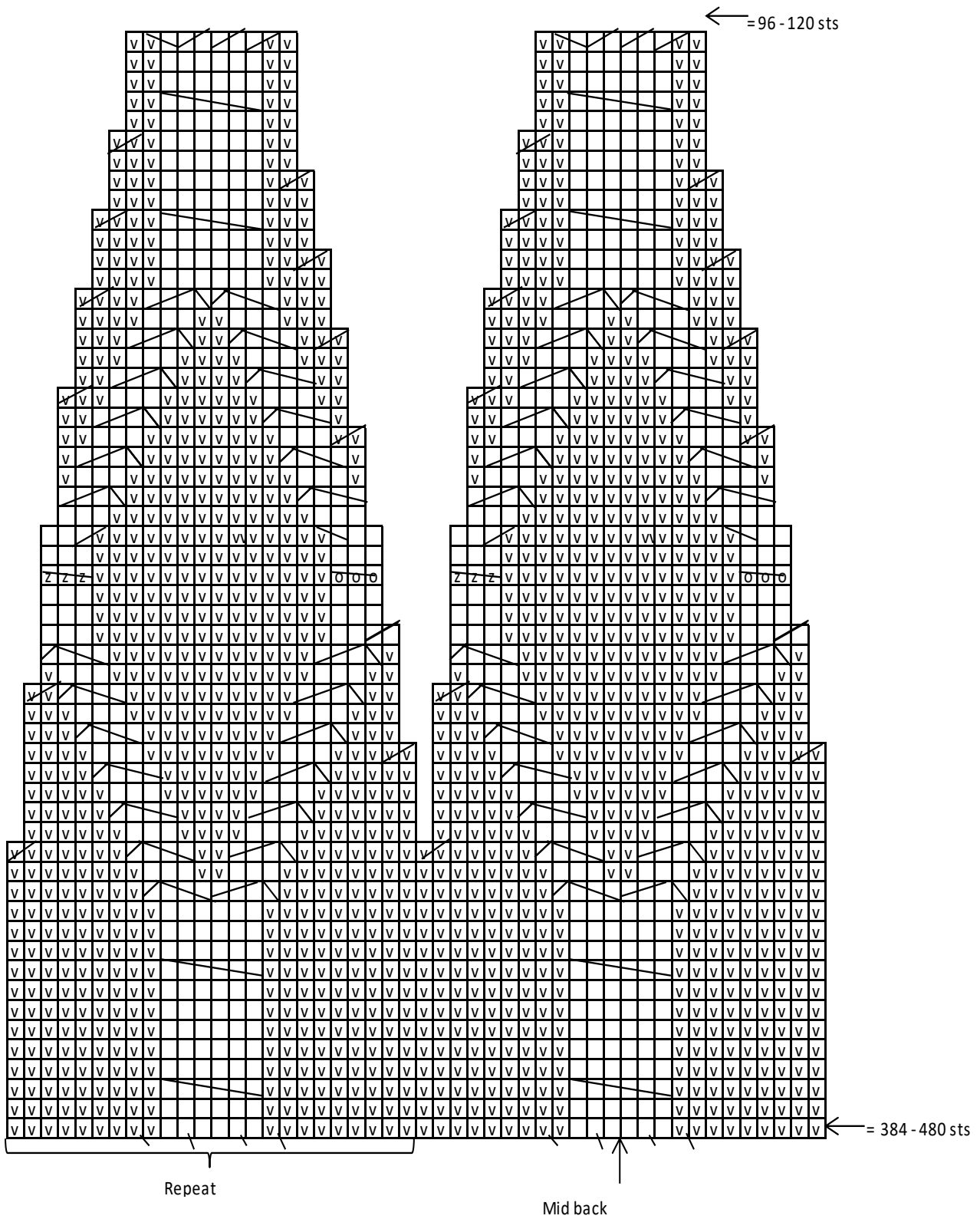
 = Knit

 = Sl 3 sts on cn, and hold to front, K3, knit sts from cn

 = Sl 1 st on cn, and hold to back, K3, purl sts from cn

 = Sl 3 sts on cn, and hold to front, P1, knit sts from cn

PATTERN C




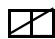
← = 96 - 120 sts

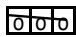
← = 384 - 480 sts

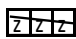
Repeat


Mid back

 = sl 1 st, K1, pssso

 = K2tog


 = Knit these 3 sts, knit sts from cn,


 = Sl thses 3 sts on cn, and hold to front


 = Inc 1 st (not where patt C comes over patt B)

 = Purl

 = Knit

 = Sl 3 sts on cn, and hold to front, K3, knit sts from cn

 = Sl 1 st on cn, and hold to back, K3, purl st from cn

 = Sl 3 sts on cn, and hold to front, P1, knit sts from cn

Viking VÅR

Poncho

1505-5

Size:	Woman
Width (beg of patt B):	160 cm 63 in
Width, lower edge:	approx. 250 cm/98.5 in
Length:	70 cm 27.6 in

ALTERNATIVE YARN: Viking Vår (100% cotton), 50 g ball

Off-White, 402:

21 balls

Knitting needles size 3½ and 4 mm – US 4 and 6 – UK/Canadian 10 or 9 and 8

Gauge: 20 sts = approx. 10 cm/4 in over St st using needles size 4 mm.

Check your gauge to ensure success.

Using needles size 4 mm, cast on 576 sts. Work in rnds in patt A. Work and dec as charted. There is now 384 sts on a rnd. After patt A, work in patt B, and dec as charted. There is now 96 sts on a rnd.

Neckband:

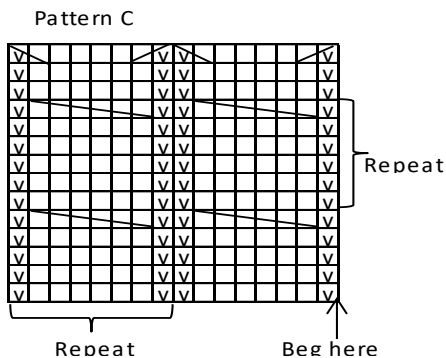
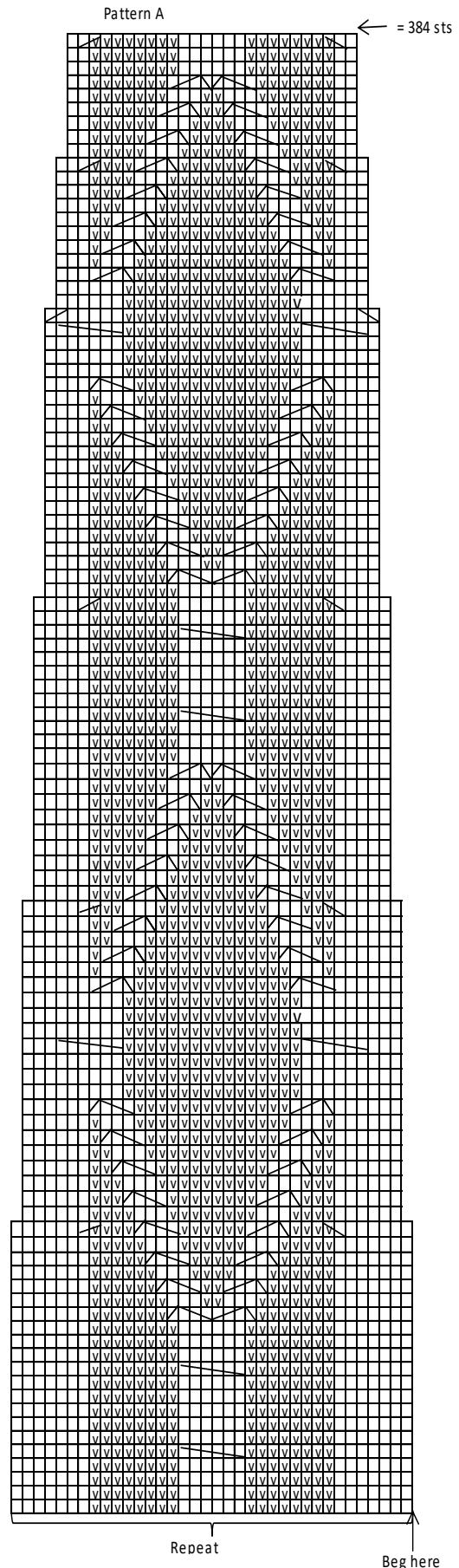
Change to needles size 3 ½ mm. Work in rnds approx. 12 cm/ in in K1,P1 rib. Bind off rather loosely in rib.

Sleeves:

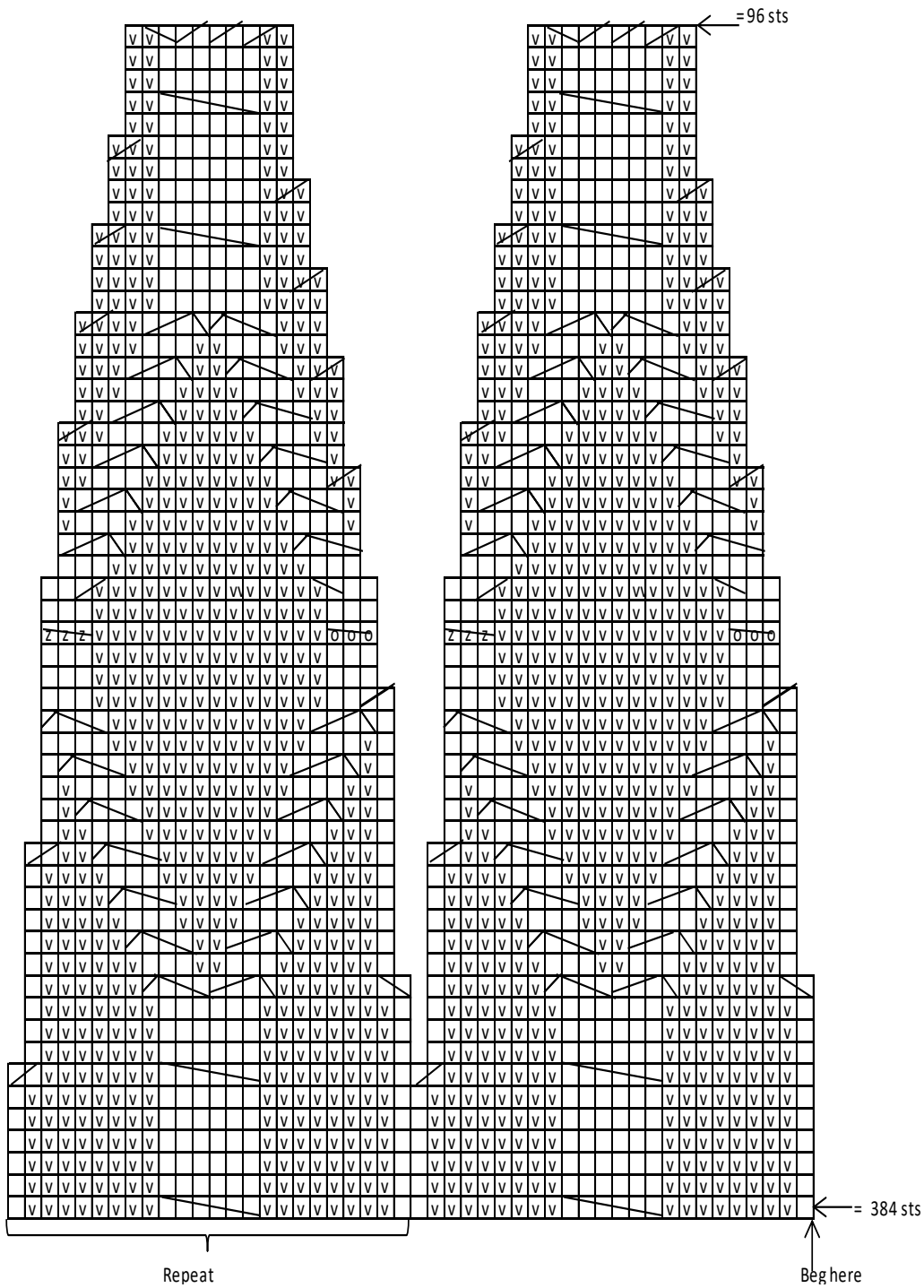
Using needles size 3 ½ mm, cast on 48 sts. Work 8 rnds in Garter st. Work 1 rnd in St st, and inc evenly across number of sts to be 64 sts. Work in patt C as charted until work measures approx. 18 cm/7.1 in (end as charted). There is now 48 sts on a rnd. Work 8 rnds in Garter st. Bind off.

Work same for the other sleeve.

Sew sleeves to cast-on edge of the poncho – 1 at each side.



PATTERN B



= Purl

= Knit

= Sl 1 st, K1, pss0

= K2tog

= Knit these 3 sts, knit then sts from cn

= Sl these 3 sts on cn, and hold to front

= Sl 3 sts on cn, and hold to front, K3, knit sts from cn

= Sl 1 st on cn, and hold to back, K3, purl st from cn

= Sl 3 sts on cn, and hold to front, P1, knit sts from cn

Viking VÅR

Sweater

1505-6

Size:	XS-S-M-L-XL
Bust:	88 -96 -104 -112 -120 cm 34.6-38.8-41-44.1-47.2 in
Length:	69 -70 -71 -72 -72 cm 27.2-27.6-28-28.3-28.3 in
Sleeve length	47 -48 -49 -50 -51 cm 18.5-18.9-19.3-19.7-20.1 in

ALTERNATIVE YARN: Viking Vår (100 % cotton), 50 g ball

White, 400:	13 -14 -14 -15 -16 balls
Navy Blue, 426 :	1 -1 -1 -1 -1 ball
Beige, 407:	1 -1 -1 -1 -1 ball

Circular needle and double pointed needles size 3 ½ and 4 mm – US 4 and 6 – UK/Canadian 10 or 9 and 8

Gauge: 20 sts = approx. 10 cm/4 in over St st using needles size 4 mm.

Check your gauge to ensure success.

Using needles size 3½ mm and white yarn, cast on 176-192-208-224-240 sts. Work in rnds 12 cm/4.7 in in K5,P3. Place markers at each side, 89-97-105-113-121 sts for front, and 87-95-103-111-119 sts for back. Cont working in St st until work measures 33-34-35-36-36 cm/13-13.4-13.8-14.2-14.2 in. Bind off on next rnd mid front st for V-neck. Cont working back and forth in St st. Dec 1 st at each edge inside selvage st, beg of row: K2tog; end of row: K2togtbl. Rep dec at each edge every 2nd row. When work measures 46-46-46-45 cm/18.1-18.1-18.1-17.7 in, divide work at sides for armholes. Finish back and front separately.

Back

Cont working back and forth in St st until work measures 69-70-71-72-72 cm/27.2-27.6-28-28.3-28.3 in, and armhole measures 23-24-25-26-27 cm/9.1-9.4-9.8-10.2-10.6 in. Bind off 12-16-20-24 sts for shoulder, and leave rem sts on holder.

Right front

Work back and forth in St st, and rep V-neck dec until 12-16-20-24-28 sts rem. When front measures same as back, bind off.

Left front

Work same as for right front, and rev all shaping.

Sleeves

Using needles size 3½ mm and white yarn, cast on 40-40-40-48-48 sts. Work in rnds 18 cm/7.1 in in K5,P3 rib. When sleeve measures 6 cm/2.4 in, place a marker mid under sleeve = beg of rnd. Inc 1 st both sides of the marker. Rep inc every 6 cm/2.4 in altog. 3 times = 46-46-46-54-54 sts. Change to needles size 4 mm. Cont working in rnds in St st, and inc 1 st both sides of the marker every 1 ½- 1 ½- 1- 1 ½- 1 ½ cm/0.6-0.6-0.4-0.6-0.6 in until there is 92-96-100-104-108 sts on a rnd. When work measures 47-48-49-50-51 cm/18.5-18.9-19.3-19.7-20.1 in, or as desired, bind off rather loosely.

Work same for the other sleeve.

Finishing

Sew shoulder seams.

V-neck

Beg from right shoulder, using needles size 3½ mm, pick or knit up 63-63-63-63-63 sts along back, and then along left and right front, approx. 10 sts/5 cm/2 in + 1 st mid front V-neck = approx. 207-207-211-211-215-215 sts. Place markers on shoulders and round mid front st. Change to blue yarn, and work in rnds 2 cm/0.8 in in St st. Dec same time 1 st both sides of mid front st, rep every rnd, and 1 st both sides of shoulder markers, rep every 2nd rnd. Change to beige clr yarn, and work 2 cm/0.8 in, and after

that 2 cm/0.8 in with blue yarn. Rep dec same as before. Bind off all sts.

Sew on sleeves.

Weave in all ends on WS.

Viking VÅR

Vest

1505-7

Size:	XS-S-M-L
Bust:	84 -92 -96 -104 cm 33.1-36.2-38.8-41 in
Length:	61 -63 -65 -67 cm 24-24.8-25.6-26.4 in
Sleeve length:	17 -18 -18 -18 cm 6.7-7.1-7.1-7.1 in

ALTERNATIVE YARN: Viking VÅR (100 % cotton), 50 g ball

Beige, 407:	12 -13 -14 -15 balls
-------------	----------------------

Circular needle and double pointed needles size 3 ½ and 4 mm – US 4 and 6 – UK/Canadian 10 or 9 and 8

Gauge: 20 sts = approx. 10 cm/4 in in St st using needles size 4 mm.

Check your gauge to ensure success.

PATTERN: (multiple with 4 + 1)

1st row (WS): Purl

2nd rnd (RS): Sl 1 st, K1, pssso, *P1, sl 1 st, K2tog, pssso*, rep *- * across the row until 2 sts rem, sl 1 st, K1, pssso

3rd (WS): P1, *1 yo, K1, 1 yo, P1*, rep *- * across the row

4th row (RS): *K1, P3, rep *- * across the row until 1 st rem, K1

5th row (WS): *P1, K3*, rep *- * across the row until 1 st rem, P1

6th row (RS): *K1, P3*, rep *- * across the row until 1 st rem, K1

7th row (WS): Purl

8th row (RS): P1, *sl 1 st, K2tog, pssso, P1*, rep *- * across the row

9th row (WS): *K1, 1 yo, P1, 1 yo*, rep *- * across the row until 1 st rem, K1

10th row (RS): P2, *K1, P3*, rep *- * across the row until 3 sts rem, K1, P2

11th row (WS): K2, *P1, K3*, rep *- * until 3 sts rem, P1, K2

12th row (RS): P2, *K1, P3*, rep *- * across the row until 3 sts rem, P1, K2

Rep rows 1 – 12 throughout the whole project

Note! Vest is worked from side to side.

Back

Using needles size 4 mm, cast on 123-127-131-135 sts. Work back and forth in patt, knit first and last st every row = selvage sts, not incl in patt. When work measures 42-46-48-52 cm/16.5-18.1-18.9-20.5 in, bind off all sts.

Front

Work same as for back. When work measures 11-12-13-14 cm/4.3-4.7-5.1-5.5 in, beg from RS, and dec 1 st inside selvage st at neck edge every 4th row 6-6-7-7 times. Cont working without dec until work measures 21-23-24-26 cm/8.3-9.1-9.4-10.2 in. Place a marker beg of row = mid front. Work right side same as left, inc instead of dec. Cont working same as before. When front measures same as back, bind off.

Finishing

Sew shoulder seams and side seams, leaving approx. 24-25-26-27- cm/9.4-9.8-10.2-10.6 in for armholes.

Sleeves

Using needles size 3½ mm, cast on 90-90-96-96 sts. Work back and forth 12 cm/ in in K3,P3 rib. Change to needles size 4 mm. Knit 1 row from RS, and inc evenly across number of sts to be 91-91-99-99 sts. Cont working back and forth in patt same as for body. Inc 1 st at each edge every 3 ½ -3-4-3 cm/1.4-1.2-1.6-1.2 in until there is 97-99-105-107 sts on a rnd. When work measures 11-12-12-12 cm/4.3-4.7-4.7-4.7 in, measured from rib, bind off all sts rather loosely.

Sew sleeve seam. Fold rib in double on RS, and fasten to sleeve with few sts.

Collar

Beg from back, from right shoulder, pick or knit up along neck edge approx. 10 sts/every 5 cm/2 in even number of sts. Work in rnds 5 cm/2 in in K1,P1 rib. Inc 1 st both sides of the purl-sts. Work 4 cm/1.6 in in K1,P3 rib. Inc 1 st both sides of the knit-sts. Work 5 cm/2 in in K3,P3 rib. Bind off rather loosely in rib.

Sew on sleeves.

Weave in all ends on WS.

Fold collar in double on RS

Viking Vår

Cardigan

1505-8

Size: S-M-L/XL

Bust: 100 -112 -124 cm

39.4-44.1-48.8 in

Length: 73 -73 -73 cm

28.7-28.7-28.7 in

Sleeve length: 49 -50 -51 cm

19.3-19.7-20.1 in

ALTERNATIVE YARN: Viking Vår (100% cotton), 50 g ball

Beige, 407: 10-10-11 balls

White, 400: 4-5-6 balls

Burgundy, 463: 1-1-2 balls

Circular needle and double pointed needles size 4 mm – US 6 – UK/Canadian 8

Gauge: 20 sts = approx. 10 cm/4 in over St st using needles size 4 mm.

Check your gauge to ensure success.

Using needles size 4 mm, cast on 200-224-248 sts. Work back and forth in patt I as charted. Place markers at each side, 50-56-62 sts for both fronts, and 100-112-124 sts for back. When patt I is ready, work in patt as foll: Patt II – after that patt III, and end with patt II, but when work measures approx. 47 cm/18.5 in, beg dec for V-neck. Dec 1 st inside 1 selvage st at each edge every 8th row. When work measures 51-51-50 cm/20.1-20.1-19.7 in, divide work at sidemarkers for armholes. Finish back and fronts separately.

Back

Cont working in patt same as before. When patt II is ready (second time), cont working in patt III with beige yarn until work measures 73 cm/28.7 in, and armhole measures 22-22-23 cm/8.7-8.7-9.1 in, bind off.

Right front

Work same as for back, and rep V-neck dec altog. 7-8-8 times. When patt II is ready (second time), cont working in patt III with beige yarn until front measures same as back. Bind off.

Work left front same as right front, but in reverse.

Sleeves

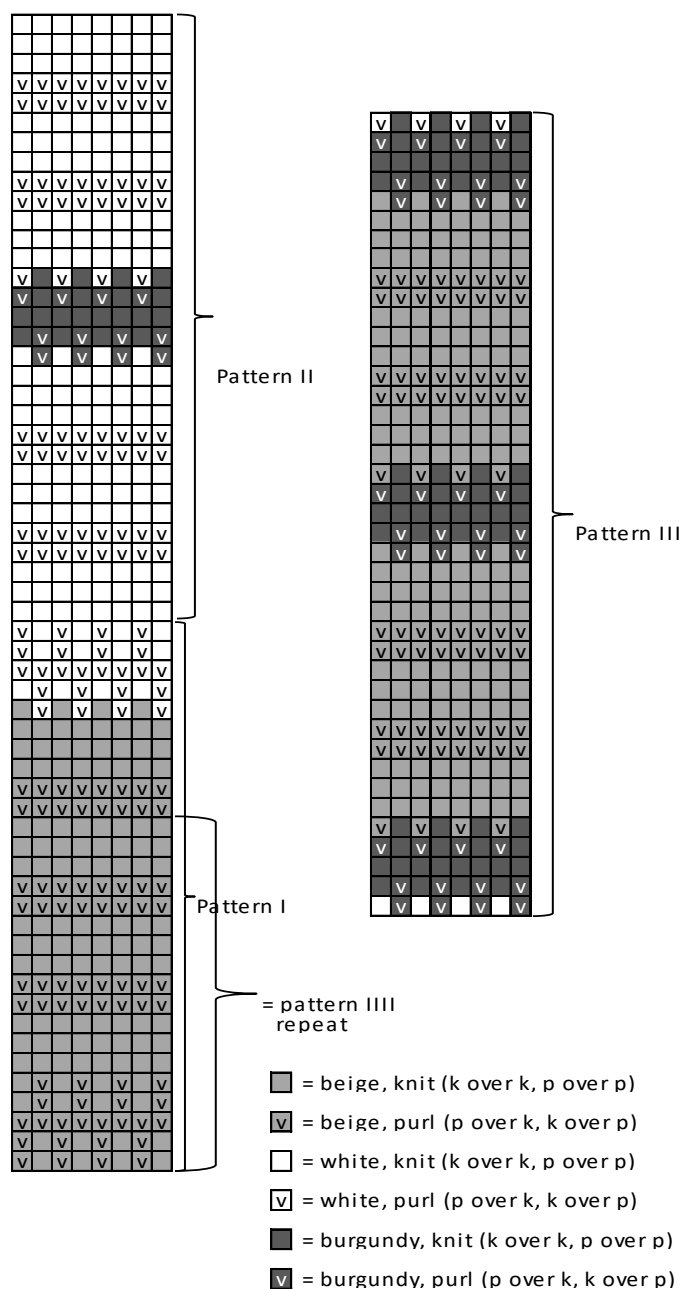
Using needles size 4 mm, cast on 40-44-44 sts. Work in patt same as for body. Place a marker beg of rnd = mid under sleeve. Inc 1 st both sides of the marker approx. every 2 - 2 - 2 cm/0.8-0.8-0.8 in until there is altog. 88-88-92 sts. When sleeve measures the given length, or as desired, bind off.

Work same for the other sleeve.

Finishing.

Sew shoulder seams.

Sew on sleeves. Weave in all ends on WS.



Viking VÅR

Sweater

1505-9

Size:	XS-S-M-L-XL-XXL
Bust:	85 -90 -95 -102 -110 -118 cm 33.5-35.4-37.4-39.8-43.3-46.4 in
Length:	65 -66 -67 -67 -68 -68 cm 25.6-26-26.4-26.4-26.8-26.8 in
Sleeve length:	48 -49 -50 -51 -52 -52 cm 18.9-19.3-19.7-20.1-20.5-20.5 in

ALTERNATIVE YARNS: Viking VÅR (100 % cotton), 50 g ball

Burgundy, 463:	11-11-12-13-14-15 balls
Beige, 407	2 -2 -2 -2 -3 -3 balls
Navy Blue, 426	1 -1 -1 -2 -2 -2 balls

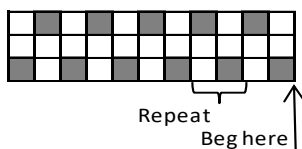
Circular needle and double pointed needles size 3 ½ and 4 mm – US 4 and 6 – UK/Canadian 10 or 9 and 8

Gauge: 20 sts = approx. 10 cm/4 in over St st using needles size 4 mm.

Check your gauge to ensure success.

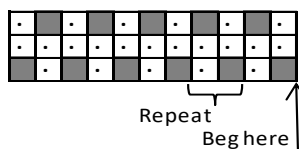
Using needles size 3½ mm and burgundy clr yarn, cast on 170-180-190-204-220-236 sts. Work in rnds 5 cm/2 in in St st, purl 1 rnd = folding edge + 5 cm/2 in in St st. Place markers at each side, 85-91-95-103-111-119 sts for front, and 85-89-95-101-109-117 sts for back. Change to needles size 4 mm, and work 1 cm/0.4 in St st. Work *patt I, 6 cm/2.4 in in St st with burgundy clr yarn, patt II, 6 cm/2.4 in in St st with burgundy clr yarn*, rep *-.* until the end.

Pattern I



■ = burgundy
□ = beige

Pattern II



■ = burgundy
□ = navy blue

When work measures 45-45-45-44-44-43 cm/17.7-17.7-17.7-17.3-17.3 in, bind off at each side 8-8-8-10-10-10 sts = 4-4-4-5-5-5 sts both sides of the markers- Leave work aside, and knit the sleeves.

Sleeves

Using needles size 3½ mm and beige yarn, cast on 36-36-40-40-44-44 sts. Work in rnds 5 cm/2 in in K2,P2 rib. Change to needles size 4 mm, and burgundy yarn. Work 2 rnds in St st, and inc evenly across 2nd rnd number of sts to be 53-55-57-59-61-63 sts. Place a marker mid under sleeve = beg of rnd. Measure from top of the body 43-44-45-46-47-47 cm/16.9-17.3-17.7-18.1-18.5-18.5 in downwards = beg sleeves from this rnd so that sleeves will end with same rnd as body. Work in stripes same as for body. Inc 1 st both sides of the marker every 4-3 ½-3-3-2 ½ cm/1.6-1.4-1.2-1.2-1.2-1 in until there is 71-77-81-85-89-93 sts on a rnd. When sleeve measures 48-49-50-51-52-52 cm/18.9-19.3-19.7-20.1-20.5-20.5 in, bind off 8-8-8-10-10-10 sts mid under sleeve = 4-4-4-5-5-5 sts both sides of the marker (end with same rnd as for body). Leave work aside, and knit same for the other sleeve.

Yoke

Slip all pieces on same circular needle size 4 mm, with sleeves over the bound-off armhole sts = 280-302-320-334-358-382 sts. Place markers at each 4 seamlines. Beg from back, from left shoulder, and cont working in rnds in St st with stripes same as before, but beg raglan-dec: Work until 3 sts rem before the marker, sl 1 st, K1, psso, K2, K2tog. Rep dec at each 4 seamline every 2nd rnd until 96-102-104-102-110-102 sts rem = 23-25-27-29-31-35 dec. Change to needles size 3½ mm and beige yarn. Work 1 rnd in St st, and dec evenly across number of sts to be 88-92-96-96-100-100 sts. Cont working in K2,P2 rib. When neckband measures 6 cm/2.4 in, bind off rather loosely in rib.

Finishing

Fold neckband and lower edge in double, and sew on WS. Sew underarm seams. Weave in all ends on WS.

Viking VÅR

Cardigan

1505-10

Size:	S-M-L-XL
Bust:	90 -100 -110 -120 cm 35.4-39.4-43.3-47.2 in
Length:	70 -71 -72 -73 cm 27.6-28-28.3-28.7 in
Sleeve length:	49 -50 -51 -52 cm 19.3-19.7-20.1-20.5 in

ALTERNATIVE YARN: Viking VÅR (100 % cotton), 50 g ball

Off-White, 402:	13-14-15-16 balls
Red, 450:	2 -2 -2 -2 balls
Navy Blue, 426:	2 -2 -2 -2 balls

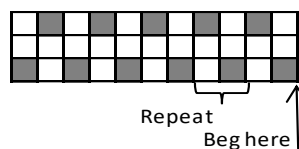
Circular needle and double pointed needles size 3 ½ and 4 mm- US 4 and 6 – UK/Canadian 10 or 9 and 8 + zipper

Gauge: 20 sts = approx. 10 cm/4 in over St st using needles size 4 mm.

Check your gauge to ensure success.

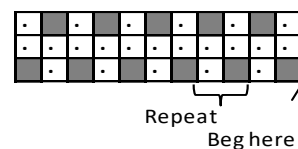
Using needles size 3½ and off-white yarn, cast on 173-193-213-233 sts. Work back and forth 5 cm/2 in Double Seed st. Change to needles size 4 mm. Work Seed st over 2 sts = right front, St st over next 169-189-229 sts and inc evenly across 6 sts, and Seed st over last 2 sts = left front. There is now 179-199-219-239 sts on a row. Cont working back and forth as established for 2 cm/0.8 in. Place markers at each side, 45-50-55-60 sts for both fronts, and 89-99-109-119 sts for back. Work first and last 2 sts always in Seed st with off-white yarn. Beg striping: Beg from RS *patt I - 6 cm/2.4 in in St st with off-white yarn - patt II - 6 cm/2.4 in in St st with off-white*, rep *-.* until the end.

Pattern I



■ = off-white
□ = navy blue

Pattern II



■ = off-white
□ = red

When work measures 50 cm/19.7 in (same for all sizes), bind off on last row 10 sts at each side for armholes = 5 sts both sides of the marker. Leave work aside, and knit the sleeves.

Sleeves

Using needles size 3½ mm and off-white yarn, cast on 37-39-41-43 sts. Work in rnds 4 cm/1.6 in in Seed st same as for body.

Change to needles size 4 mm. Work 1 rnd in St st, and inc evenly across number of sts to be 49-51-53-55 sts. Place a marker mid under sleeve = beg of rnd. Measure from top of the body 45-46-47-48 cm/17.7-18.1-18.5-18.9 in downwards = beg sleeves from this rnd so that sleeves will end with the same rnd as body. Cont working with stripe patt same as for body. Inc 1 st both sides of the marker approx. every 4-3 ½-3-3 cm/1.6-1.4-1.2-1.2 in until there is 71-75-81-85 sts on a rnd. When work measures approx. 49-50-51-52 cm/19.3-19.7-20.1-20.5 in, bind off 10 sts mid under sleeve = 5 sts both sides of the marker (end with same rnd as body). Leave work aside, and knit same for the other sleeve.

Yoke

Slip all pieces on needles size 4 mm, with sleeves over the bound-off armhole sts = 281-309-341-369 sts. Place markers at each 4 seamlines. Beg from right front. Work same as before, but beg raglan-dec as foll: Work until 3 sts rem before a marker, sl 1 st, K1, psso, K2, K2tog. Rep dec at each 4 seamline every 2nd row (= RS-row) until 81-93-109-121 sts rem on a row = 25-27-29-31 dec. Work 1 rnd in St st, and dec evenly across 0-0-12-20 sts = 81-93-97-101 sts.

Neckband

Cont working back and forth in Seed st with off-white yarn. When neckband measures approx. 5 cm/2 in, bind off, knit-sts knitwise, and purl-sts purlwise.

Finishing: Sew underarm seams.

Weave in all ends on WS.

Sew on zipper.

Viking VÅR

Sweater

1505-11

Size: XS-S-M-L-XL-XXL

Bust: 85 -90 -95 -102 -110 -118 cm

33.5-35.4-37.4-40.2-43.3-46.5 in

Length: 65 -66 -67 -67 -68 -68 cm

25.6-26-26.4-26.4-26.8-26.8 in

Sleeve length: 48 -49 -50 -51 -52 -52 cm

18.9-19.3-19.7-20.1-20.5-20.5 in

ALTERNATIVE YARN: Viking VÅR (100 % cotton), 50 g ball

Navy Blue, 426: 12-12-13-13-14-15 balls

White, 400 3 -3 -3 -3 -3 -3 balls

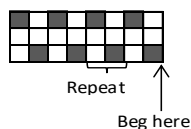
Circular needle and double pointed needles size 3 ½ and 4 mm – US 4 and 6 – UK/Canadian 10 or 9 and 8 + 4 buttons

Gauge: 20 sts = approx. 10 cm/4 in in St st using needles size 4 mm.

Check your gauge to ensure success.

Using needles size 3½ mm and white yarn, cast on 168 -180 -190 -204 -220 -236 sts. Work in rnds 4 cm/1.6 in in St st + purl 1 rnd = folding edge. Change to navy blue yarn, and work 4 cm/1.6 in in St st. Place markers at each side, 85 -91 -95 -103 -111 -119 sts for front, and 83 -89 -95 -101 -109 -117 sts for back. Change to needles size 4 mm, and cont working in St st. When work

measures 6 cm/2.4 in, measured from folding edge, work in patt as charted.



□ = white

■ = navy blue

Cont as foll: *Work 6 cm/2.4 in with navy blue yarn, patt as charted*, rep *-* until the end. When work measures 45 -45 -45 -44 -44 -43 cm/17.7-17.7-17.7-17.3-17.3-16.9 in, divide work at sides for armholes. Finish back and front separately.

Back

Cont working back and forth in St st with patt same as before. When work measures 64 -65 -66 -66 -67 -67 cm/25.2-25.6-26-26-26.4-26.4 in, measured from folding edge, dec evenly across last row 1-3-1-3-3-3 sts = 82-86-94-98-106-114 sts. Work 3 rows in K2,P2 rib. Bind off in rib.

Front

Work same as for back, but dec evenly on last row before rib 3-5-1-5-5-5 sts = 82-86-94-98-106-114 sts.

Sleeves

Using needles size 3½ and navy blue yarn, cast on 36 -36 -40 -40 -44-44 sts. Work in rnds 5 cm/2 in in K2,P2 rib. Change to needles size 4 mm. Work in St st, and inc evenly across 1st rnd number of sts to be 50-54-58-62-66-68 sts. Place a marker mid under sleeve = beg of rnd. Work 1 cm/0.4 in with navy blue yarn + patt as charted, and after that rep *-* same as for body. Inc same time 1 st both sides of the marker approx. every 2 ½ -2 ½ -3 -3 -3- 2 ½ cm/1-1-1.2-1.2-1.2-1 in until there is 80-84-88-92-96-100 sts on a rnd. When work measures 48-49-50-51-52-52 cm/18.9-19.3-19.7-20.1-20.5-20.5 in, or as desired, bind off rather loosely.

Work same for the other sleeve.

Finishing

Sew shoulder seams. Beg from armhole edge, and sew tog 3-4-4-5-6-7 cm/1.2-1.6-1.6-2-2.4-2.8 in towards neck edge. Crochet 2 buttonhole loops approx. 3 cm/1.2 apart on each shoulder.

Sew on sleeves. Fold lower edge in double, and sew on WS.

Weave in all ends on WS.

Sew on buttons.

Viking VÅR

Sweater

1505-12

Size: S-M-L-XL

Bust: 96 - 104 - 112 - 120 cm

38.8-41-44.1-47.2 in

Length: 60 - 61 - 62 - 64 cm

23.6-24-24.4-25.2 in

Sleeve length: 48 - 50 - 51 - 52 cm

18.9-19.7-20.1-20.5 in

ALTERNATIVE YARN: Viking Vår (100% cotton), 50 g ball

Pink, 466:

14 - 16 - 18 - 20 balls

Knitting needles size 3½ and 4 mm – US 4 and 6 – UK/Canadian 10 or 9 and 8

Gauge: 20 sts = approx. 10 cm/4 in over St st using needles size 4 mm. **Check your gauge to ensure success.**

Pattern II, worked in rnds

1st rnd: Purl

2nd rnd: X Knit same st 3 times: K1tfl, K1tbl, K1tfl, K3tog X, rep X-X.

3rd rnd: Purl

4th rnd: X K3tog, knit same st 3 times: K1tfl, K1tbl, K1tfl X, rep X-X.

Rep rnds 1-4. 1.

When working patt back and forth, purl sts tog instead of knitting them tog.

Using needles size 3 1/2 mm, cast on 192 – 208 – 224 – 240 sts. Work in rib as foll: K2, X P4, K4 X, rep X-X across the rnd, and end with K2.

Cont working as established until rib measures approx. 8 cm/3.1 in (same for all sizes). Change to needles size 4 mm. Work 1 rnd in St st, and inc evenly across as foll: *Inc 0 – 2 – 4 – 6 sts evenly across first 18 – 22 – 26 – 30 sts (= 18 – 24 – 30 – 36 sts for patt I as charted), inc 2 sts evenly across next 10 sts (= 12 sts for patt II), inc 26 sts evenly across next 40 sts (= 66 sts for patt A as charted), inc 2 sts evenly across next 10 sts (= 12 sts in patt II) and inc 0 – 2 – 4 – 6 sts evenly across next 18 – 22 – 26 – 30 sts (= 18 – 24 – 30 – 36 sts for patt I) = front*, rep *-* one more time = back. There is now 252 – 276 – 300 – 324 sts on a rnd, and 126 – 138 – 150 – 162 sts for both back and front.

Cont working in rnds as established. When work measures approx. 38 – 38 – 38 – 39 cm/15-15-15-15.4 in, divide work at sides for armholes (check that cable twists will be made on RS). Finish back first. Work back and forth until work measures approx. 60 – 61 – 62 – 64 cm/23.6-24-24.4-25.2 in. Knit 1 row over all sts, and dec as foll: Dec evenly across sts for patt I on both sides to be 18 – 22 – 26 – 30 sts, dec evenly across patt II on both sides number of sts to be 10 sts, and dec as charted for patt A. There is now 98 – 106 – 114 – 122 sts on a row. Slip 42 mid sts on holder, and bind off rather loosely 28 – 32 – 36 – 40 sts for shoulders.

Front: Work same as for back, **but** when work measures approx. 7 – 7 – 8 – 8 cm/2.8-2.8-3.1-3.1 in less than the given length, bind off for neck edge.

Slip 48 mid sts on holder. Finish each side separately. Bind off at neck edge every 2nd row 1x3 sts, 2x2 sts, and 2x1 st. When front measures same as back, knit 1 row over shoulder sts, and dec same as for back.

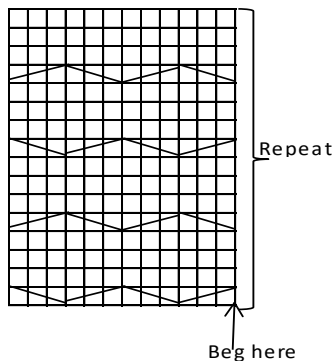
Work same for the other side, rev all shaping.

Sleeves: Using needles size 3 1/2 mm, cast on 32-32-40-40 sts. Work in rib same as for body (beg and end with K2). Change to needles size 4 mm. Work 1 rnd in St st, and inc evenly across number of sts to be 56-56-64-64 sts. Work in patt A, and rep as charted. Place a marker beg of rnd (= mid under sleeve). Inc 1 st both sides of the marker approx. every 1 cm/0.4 in (same for all sizes) until there is 128 – 128 – 144 – 144 sts on a rnd, and sleeve measures 48 – 50 – 51 – 52 cm/18.9-19.7-20.1-20.5 in. Knit 1 rnd over all sts, and dec as charted.

Finishing: Join shoulder seams.

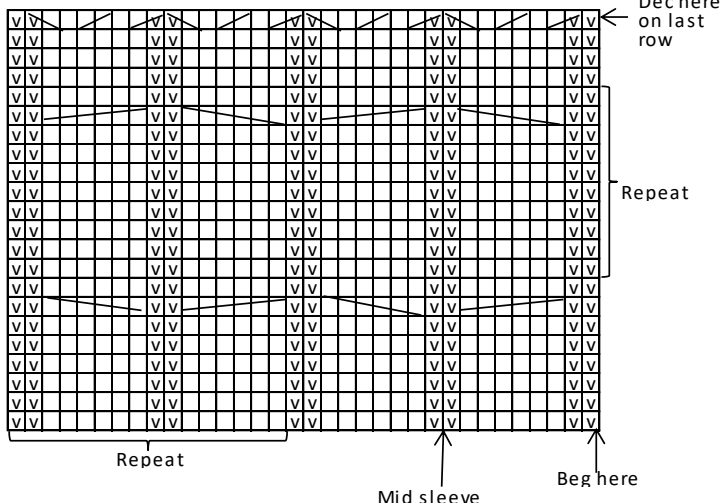
Collar: Beg from left shoulder. Using needles size 3 1/2 mm pick or knit up approx. 18 sts mid front, dec evenly across over 48 sts to be 30 sts (as charted), pick or knit up approx. 18 sts along right side, and 40 sts from back. There is now 106 sts on a rnd. Work 1 rnd in St st, and inc evenly across mid front 6 sts (= 112 sts). Cont working in rib same as for body (beg and end with K2). When collar measures approx. 24 cm/9.4 in, bind off in rib. Sew on sleeves.

Pattern I



- = St st
- = Sl 2 sts on cn, and hold to back, K1, knit sts from cn
- = Sl 1 st on cn, and hold to front, K2, knit st from cn

Pattern A



- = Knit
- ▤ = Purl
- = Sl 3 sts on cn, and hold to back, K3, knit sts from cn
- = Sl 3 sts on cn, and hold to front, K3, knit sts from cn
- = K2tog
- = Sl 1 st, K1, pssso