

Viking Sportsragg

Scarf and hat

1503-1

Size: Woman
Scarf: 20 x 260 cm

7.9 x 102.4 in

ALTERNATIVE YARNS: Viking Sportsragg (60% wool, 20% nylon, 20% acrylic), Viking Superwash (100% wool, superwash), Viking Sportsgarn (100% wool), Viking Merino Superfine (100% merinowool, superwash), 50 g ball

Scarf:

Beige, 507: 8 balls

Hat

Beige, 507: 3 balls

Short circular needle size 3 and 3 ½ mm – US 2 or 3 and 4 – UK/Canadian 11 and 10 or 9

Gauge: 23 sts = approx. 10 cm/4 in over St st using needles size 3½ mm. **Patent patt:** 16 sts = approx. 10 cm/4 in using needles size 3 ½ mm. **Check your gauge to ensure success.**

Seed st:

1st row: K1, P1

2nd row: Purl all knit-sts, knit all purl-sts.

Rep 2nd row.

SCARF, Seed st

Using needles size 3½ mm, cast on 47 sts. Work back and forth in Seed st.

When work measures 220 cm/86.6 in, bind off, knit-sts knitwise, purl-sts purlwise.

Tie approx. 20 cm/7.9 in long fringes, using double folded yarn.

Tie a fringe to each cast-on and bound-off st.

HAT, St st

Using needles size 3 mm, cast on 120 sts. Work in rnds 18 cm/7.1 in in K1,P1 rib. Change to needles size 3½ mm. Cont working in St st. When hat measures 20 cm/7.9 in, measured from rib, knit all sts tog in pairs until 15 sts rem on a rnd.

Break yarn, and thread through rem sts. Make a large pom-pom, diameter approx. 9 cm/3.5 in, and fasten on top.

Viking Sportsragg

Hat and mittens

1503-2

Size, hat: Woman

ALTERNATIVE YARNS: Viking Sportsragg (60% wool, 20% nylon, 20% acrylic), Viking Superwash (100% wool, superwash), Viking Sportsgarn (100% wool), Viking Merino Superfine (100% merinowool, superwash), 50 g ball

Circular needle and double pointed needles size 3 and 3 ½ mm – US 2 or 3 and 4 – UK/Canadian 11 and 10 or 9

Gauge: 23 sts = approx. 10 cm/4 in over St st using needles size 3½ mm. **Check your gauge to ensure success.**

HAT

Charcoal, 517: 3 balls

White, 500: 1 ball

Grey, 530: 1 ball

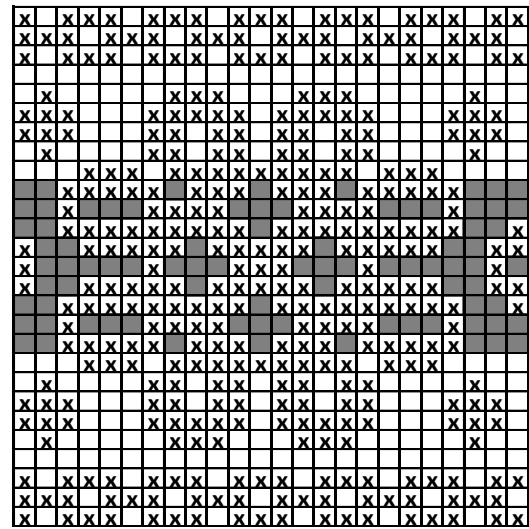
Using needles size 3 mm and charcoal clr yarn, cast on 120 sts. Work in rnds approx. 12 cm/4.7 in in K1,P1 rib. Change to needles size 3½ mm. Knit 1 rnd with charcoal, and inc evenly across number of sts to be 144 sts. Cont working in rnds in patt as charted. When patt is ready, cont working in St st with charcoal, until work measures approx. 29 cm/11.4 in (measured from cast-on edge). Dec for crown: Knit all sts tog in pairs. Work 1 rnd in St st. Rep dec every 2nd rnd until 18 sts rem.

Break yarn, thread through rem sts, tighten the yarn slightly, and weave in on WS.

Using charcoal yarn, make a big pom-pom, and fasten it on top.

Weave in all ends on WS.

Dampen work slightly.



□ = charcoal

⊠ = white

■ = grey

MITTENS

(Woman)

Charcoal,517: 2 balls

White, 500: 1 ball

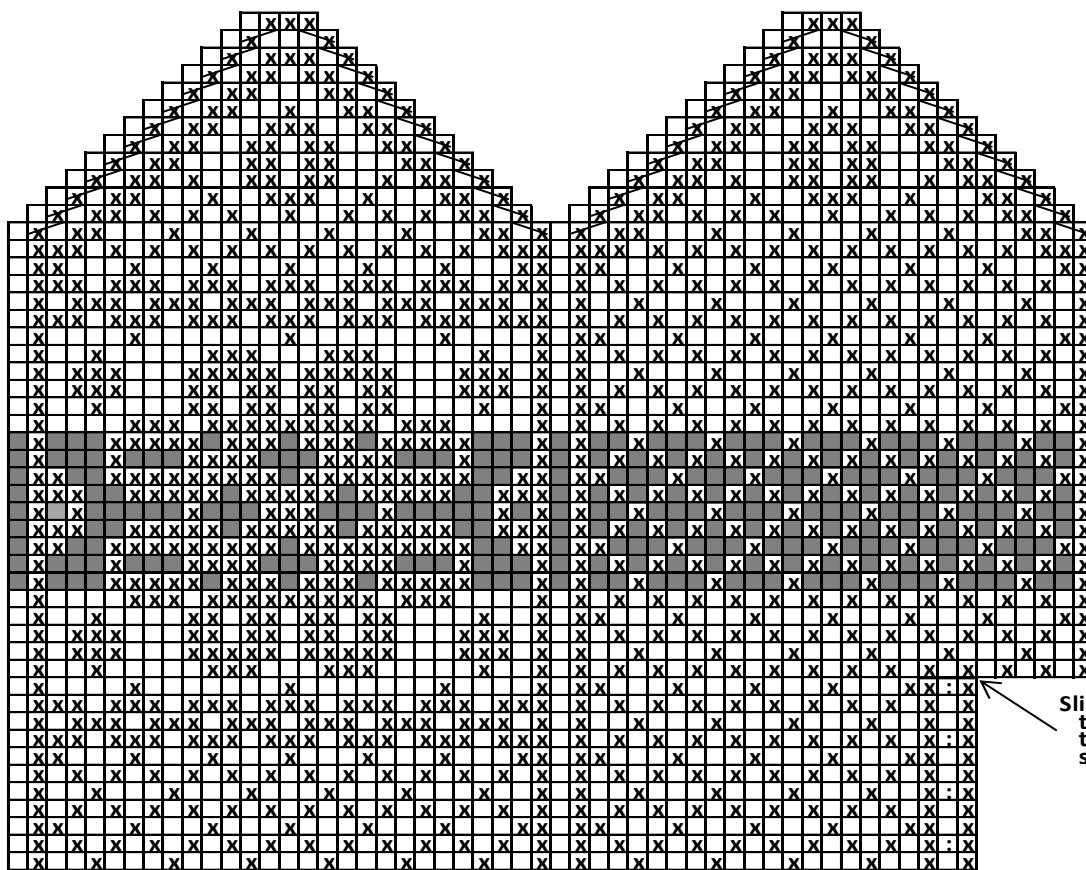
Grey, 530: 1 ball

Using needles size 3 mm and charcoal clr yarn, cast on 50 sts. Work in rnds 8 cm/3.1 in in K1,P1 rib. Change to needles size 3½ mm. Cont working in patt for mittens, and inc as charted for thumb gusset. Slip 11 thumb sts on holder where the arrow points out. Cast on 9 sts over thumb opening, and cont working in patt charted.

Break yarn, and draw through rem sts. Weave in all ends on WS.

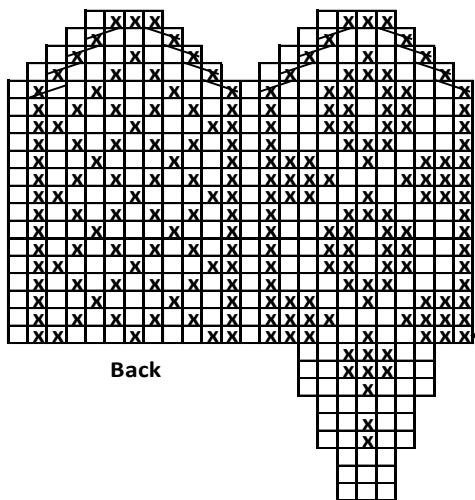
Thumb: Slip thumb sts on needles size 3½ mm, and pick or knit up 11 sts from the upper edge of the thumb opening + 1 st

from each side. There is now 24 sts on a rnd. Work in patt for thumb as charted (patt for front and back).



Inc here for thumb gusset. These sts + inc sts will be sl on holder

PATTERN FOR THUMB



Back

Slip here thumb gusset sts on holder

- = charcoal
- = grey
- ⊗ = white
- ⊔ = 2 inc = inc 1 st both sides of the st
- ⊕ = Sl 1 st, K1, pssso
- ⊖ = K2tog

Viking Sportsragg

Scarf and hat

1503-3

Size: Woman

Scarf: 22 x 260 cm

8.7 x 102.4 in

ALTERNATIVE YARN: Viking Sportsragg (60% wool, 20% nylon, 20% acrylic), Viking Superwash (100% wool, superwash), Viking Sportsgarn (100% wool), Viking Merino Superfine (100% merinowool, superwash), 50 g ball

Scarf:

Grey, 530: 9 balls

Hat:

Grey, 530: 3 balls

Short circular needle and double pointed needles 3 and 3 ½ mm – US 2 or 3 and 4 – UK/Canadian 11 and 10 or 9

Gauge: 23 sts = approx. 10 cm/4 in over St st using needles size 3½ mm. **Patent patt:** 16 sts = approx. 10 cm/4 in using needles size 3½ mm. **Check your gauge to ensure success.**

PATENT PATT, worked back and forth:

1st row: 1 selvage st, *K1, 1 yo, sl 1 purlwise, hold yarn to back*, rep *-*, end with K1, 1 selvage st.

2nd row: 1 selvage st, *1 yo, sl 1 st purlwise, ktog next st and yo*, rep *-*, end with 1 yo, sl 1 st purlwise, 1 selvage st.

3rd row: 1 selvage st, *ktog next st and yo, 1 yo, sl 1 st purlwise*, rep *-*, end with ktog next st and yo, 1 selvage st. Rep 2nd and 3rd row.

PATENT PATT, worked in rnds:

1st rnd: *1 yo, sl 1 st purlwise, hold yarn to back, K1*, rep *-*.

2nd rnd: *Ptog yo and next st, 1 yo, sl 1 st purlwise*, rep *-*.

3rd rnd: *1 yo, sl 1 st purlwise, ktog yo and next st*, rep *-*. Rep 2nd and 3rd rnd.

SCARF, patent patt

Using needles size 3½ mm, cast on 35 sts. Work back and forth patent patt. When work measures 220 cm/86.6 in, bind off. Tie approx. 20 cm/7.9 in fringes with double folded yarn to each cast-on/bound-off sts.

HAT, patent patt

Using needles size 3 mm, cast on 120 sts. Work in rnds 6 cm/2.4 in in K1,P1 rib. Knit 1 rnd, and dec evenly across number of sts to be 90 sts. Change to needles size 3½ mm. Cont working in rnds in patent patt. When work measures approx. 26 cm/10.2 in, or 2 cm/0.8 in less than the desired length, knit all sts tog in pairs until 12 sts rem. Break yarn, and thread through rem sts, tighten the yarn, and weave in on WS.

Make a large pom-pom, and fasten it on top.

Viking Sportsragg

Scarf

1503-4

Size: Woman

Scarf: 20 x 260 cm

7.9 x 102.4 in

ALTERNATIVE YARNS: Viking Sportsragg (60% wool, 20% nylon, 20% acrylic), Viking Superwash (100% wool, superwash), Viking Sportsgarn (100% wool), Viking Merino Superfine (100% merinowool, superwash), 50 g ball

Off-White, 502: 8 balls

Short circular needle size 3 and 3 ½ mm – US 2 or 3 and 4 – US/Canadian 11 and 10 or 9

Gauge: 23 sts = approx. 10 cm/4 in over St st using needles size 3½ mm. **Patent patt:** 16 sts = approx. 10 cm/4 in using needles size 3½ mm. **Check your gauge to ensure success.**

Seed st:

1st row: K1, P1

2nd row: Knit every purl-st, purl every knit-st

Rep 2nd row

SCARF, Seed st

Using needles size 3½ mm, cast on 47 sts. Work back and forth in Seed st.

When work measures 220 cm/86.6 in, bind off knit-sts knitwise, and purl-sts purlwise.

Tie approx. 20 cm/7.9 in long fringes from double folded yarn to each cast-on/bound-off st,

Hat and mittens

Size: Woman

Circumference: approx.

52 cm/20.5 in

ALTERNATIVE YARN: Viking Sportsragg (60% wool, 20% nylon, 20% acrylic), Viking Superwash (100% wool, superwash), Viking Sportsgarn (100% wool), Viking Merino Superfine (100% merinowool, superwash), 50 g ball

Off-White, 502: 4 balls

Pink, 563: 1 ball

Light Grey, 513: 1 ball

Beige, 507: 1 ball

Dark Grey, 530: 1 ball

Violet, 568: 1 ball

Brown, 519: 1 ball

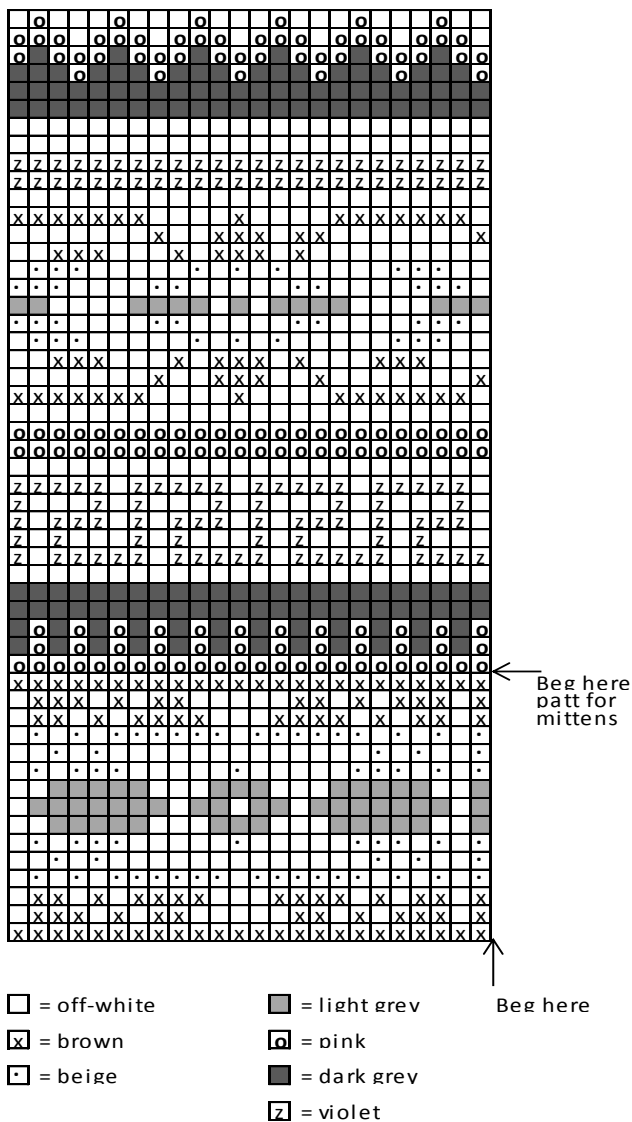
Double pointed needles and circular needle size 3 and 3½ mm – US 2 or 3 and 4 – UK/Canadian 11 and 10 or 9

Gauge: 23 sts = approx. 10 cm/4 in over St st using needles size 3½ mm. **Check your gauge to ensure success.**

HAT

Using needles size 3 mm and off-white yarn, cast on 120 sts. Work in rnds 10 cm/4 in in K1,P1 rib. Change to needles size 3½ mm. Cont working in patt A as charted. When work measures approx. 17 cm/6.7 in, measured from rib, knit all sts tog in pairs until 15 sts rem. Break yarn, and thread through rem sts. Make a large pom-pom from off-white yarn, and fasten on top.

Pattern A



MITTENS

Using dnp size 3 mm and off-white ran, cast on 48 sts. Work 8 cm/3.1 in K1,P1 rib. Place markers at each side, 24 sts for both sides. Change to needles size 3½ mm. Work in patt A as charted (beg from where arrow points out). When work measures approx. 13 cm/5.1 in, inc for thumb gusset: Work until 2 sts rem before a marker, M1, K2, M1. Work 2 rnds without inc (work over inc sts in St st with off-white yarn). Rep inc every 3rd rnd with 2 sts more between each inc until there is altog. 12 sts for the gusset. Slip thumb gusset sts on holder, and cast on 2 new sts to the upper edge of the thumb opening = 48 sts. Cont working in rnds in patt same as before until mitten measures approx. 20 cm/9.8 in (or as desired before dec). **Note!** When patt is ready, cont working in St with white yarn.

Dec as foll: Work until 2 sts rem before a marker, K2tog, sl 1 st, K1, pssso. Rep dec at each side every 2nd rnd 2 times, and after that every rnd until 8 sts rem on a rnd. Break yarn, thread through rem sts, and weave in the end on WS.

Thumb, off-white: Slip sts from holder on 4 dpn, and pick 4 new sts from the upper edge of thumb opening + 1 st from both sides = 18 sts. Work approx. 6 cm/2.4 in in St st. Knit 1 rnd, and K2tog beg of each dpn until 4 sts rem. Break yarn, thread through rem sts, and weave the end on WS.

Work same for the other mitten, but make thumb on the opposite side.

Viking Sportsragg

Scarf and hat

1503-5

Size Woman

Scarf: 20 x 260 cm

7.9 x 102.4 in

ALTERNATIVE YARN: Viking Sportsragg (60% wool, 20% nylon, 20% acrylic), Viking Superwash (100% wool, superwash), Viking Sportsgarn (100% wool), Viking Merino Superfine (100% merinowool, superwash), 50 g ball

Scarf:

Off-White, 502: 8 balls

Hat:

Off-White, 502: 3 balls

Short circular needle size 3 and 3 ½ mm – US 2 or 3 and 4 – UK/Canadian 11 and 10 or 9

Gauge: 23 sts = approx. 10 cm/4 in over St st using needles size 3½ mm. Patent patt: 16 sts = approx. 10 cm/4 in using needles size 3½ mm. **Check your gauge to ensure success.**

Seed st:

1st row: K1, P1

2nd row: Knit all purl-sts, purl all knit-sts

SCARF, Seed st

Using needles size 3½ mm, cast on 47 sts. Work back and forth in Seed st. When work measures 220 cm/86.6 in, bind off, knit-sts knitwise, purl-sts purlwise.

Tie approx. 20 cm/7.9 in long, double folded fringes to every cast-on/bound-off st.

HAT, Seed st

Using needles size 3 mm, cast on 120 sts. Work in rnds 16 cm/6.3 in in K1,P1 rib. Change to needles size 3½ mm. Cont working in Seed st. When work measures 18 cm/7.1 in, measured from rib, knit all sts tog in pairs until 15 sts rem on a rnd. Break yarn, and thread through rem sts.

Make a large pom-pom, diameter approx. 9 cm/3.5 in, and fasten it on top.

Viking Sportsragg

Sweater

1503-6

Size:	S - M - L - XL
Chest:	97 - 107 - 116 - 128 cm 38.2 - 42.2 - 45.4 - 50.3 in
Length:	68 - 69 - 70 - 71 cm 26.8 - 27.2 - 27.6 - 28 in
Sleeve length:	50 - 51 - 52 - 54 cm 19.7 - 20.1 - 20.5 - 21.3 in

ALTERNATIVE YARN: Viking Sportsragg (60% wool, 20% nylon, 20% acrylic), Viking Superwash (100% wool, superwash), Viking Sportsgarn (100% wool), Viking Merino Superfine (100% merinowool, superwash), 50 g ball

Black, 550:	13 - 14 - 15 - 16 balls
White, 500:	2 - 2 - 3 - 3 balls
Light Grey, 513:	1 - 1 - 2 - 2 balls
Grey, 530:	2 - 2 - 2 - 3 balls

Circular needle and double pointed needles size 3 and 3 ½ mm – US 2 or 3 and 4 – UK/Canadian 11 and 10 or 9

Gauge: 23 sts = approx. 10 cm/4 in over St st using needles size 3 ½ mm. **Check your gauge to ensure success.**

Using needles size 3 mm and black yarn, cast on 222-246-264-294 sts. Work in rnds 6 cm/2.4 in in K3,P3 rib. Change to needles size 3 ½ mm. Work 1 rnd in St st, and adjust number of sts to be 222-246-266-294 sts. Place markers at each side, 111-123-133-147 sts for both front and back. When work measures 16.5-16.5-16.9-16.9 in (same for all sizes), bind off at each side 12-12-14-14 sts for armholes = 6-6-7-7 sts both sides of the markers.

Sleeves

Using needles size 3 mm and black yarn, cast on 42-48-48-54 sts. Work in rib same as for body. Change to needles size 3 ½ mm. Work 1 rnd in St st, and inc evenly across number of sts to be 57-61-65-69 sts. Place a marker mid under sleeve = beg of rnd. Cont working in St st. Inc 1 st both sides of the marker approx. every 2 cm/0.8 in (same for all sizes) until there is 99-105-111-115 sts on a rnd. When sleeve measures the given length, or as desired, bind off on last rnd 12-12-14-14 sts mid under sleeve = 6-6-7-7 sts both sides of the marker. Leave work aside, and knit same for the other sleeve.

Yoke

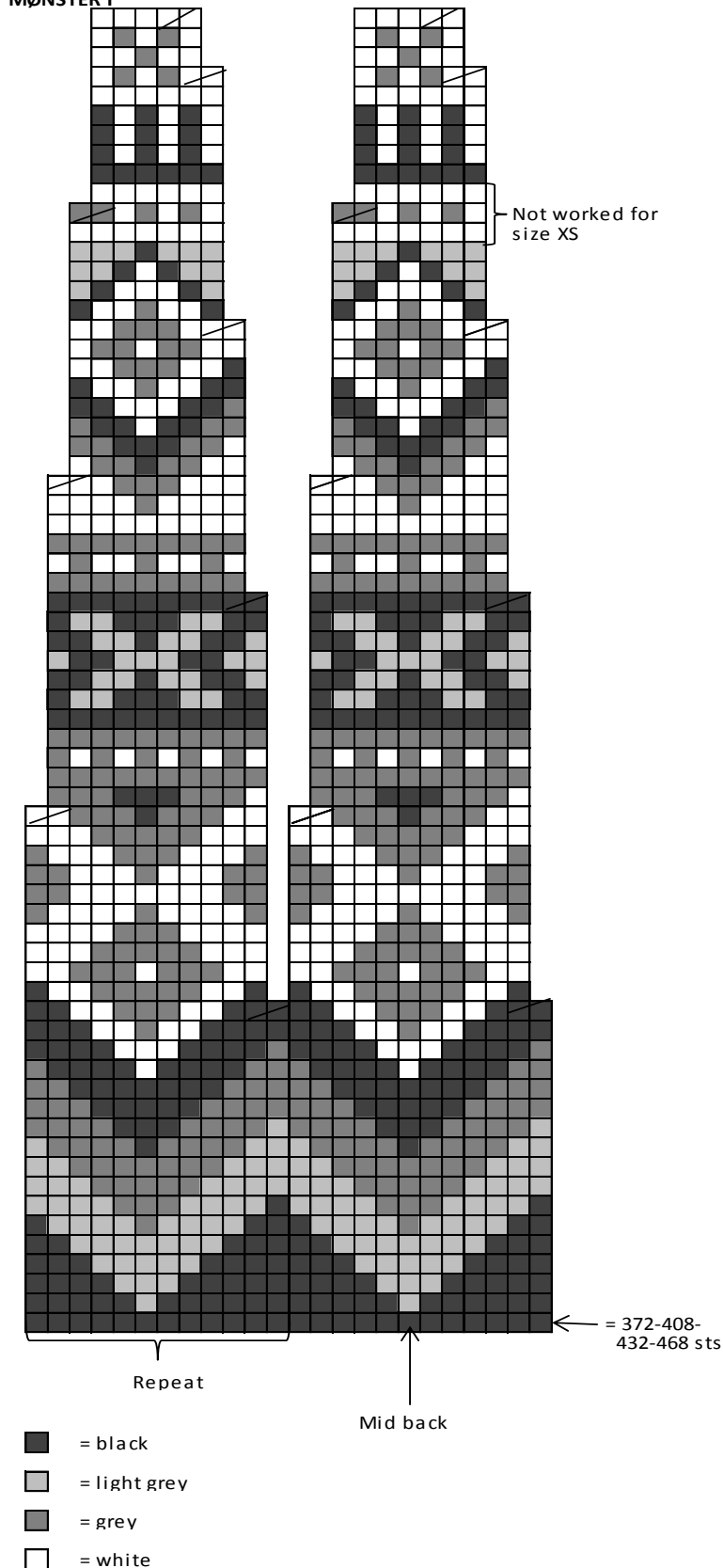
Slip all pieces on same circular needle size 3 ½ mm, with sleeves over the bound-off armhole sts = 372-408-432-468 sts. Work in patt I as charted. Beg from back, from right shoulder. Check from mid back where to beg patt. When patt I is ready, there is 124-136-144-156 sts on a rnd. Work 2 rnds in St st with white yarn. Dec evenly across 2nd rnd 28-34-42-48 sts, number of sts to be 96-102-102-108 sts. Change to needles size 3 mm. Work 7 cm/2.8 in in K3,P3 rib with white yarn. Bind off in rib.

Finishing:

Sew underarm seams.

Weave in all ends on WS.

MØNSTER I



- = black
- = light grey
- = grey
- = white

Viking Sportsragg

Hat

1503-7

Size: Woman

ALTERNATIVE YARN: Viking Sportsragg (60% wool, 20% nylon, 20% acrylic), Viking Superwash (100% wool, superwash), Viking Sportsgarn (100% wool), Viking Merino Superfine (100% merinowool, superwash), 50 g ball

Light Grey, 513: 3 balls

Short circular needle size 3 and 3 ½ mm – US 2 or 3 and 4 – UK/Canadian 11 and 10 or 9

Gauge: 23 sts = approx. 10 cm/4 in over St st using needles size 3½ mm. **Check your gauge to ensure success.**

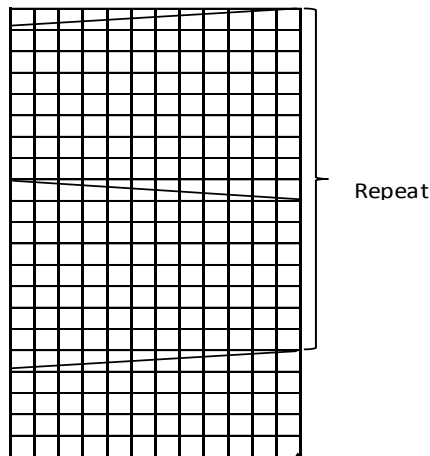
Seed st:

1st row: K1, P1

2nd row: Knit all purl-sts, purl all knit-sts


Cabled edge: Using needles size 3 mm, cast on 23 sts. Work back and forth in Seed st. When work measures 1½ cm/0.6 in, make 2 buttonholes 4 st from each edge. Buttonhole: Bind off 3 sts. Next row: Cast on 3 new sts over the bound-off sts. When work measures 3 cm/1.2 in, inc 3 sts over 9 mid sts = 26 sts. Buttonhole band is now ready. Cont as foll: Seed st over 7 sts, patt I over 12 sts as charted, Seed st over 7 sts. Cont working as established until work measures approx. 53 cm/20.9 in, measured from ready buttonhole band, or as desired (Note: Buttonhole band will overlap the other edge of the cabled edge). Dec 3 sts on last row over patt I = 23 sts. Bind off. Using needles size 3½ mm, pick up 120 sts along the cabled edge (buttonhole band on RS). Work in rnds approx. 18 cm/7.1 in in Seed st. Knit all sts tog in pairs until 15 sts rem. Break yarn, thread through rem sts, tighten the yarn slightly, and weave in on WS. Weave in all ends on WS. Sew on 2 buttons. Make a large pom-pom, and fasten on top.

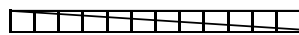
Pattern I



Beg here

□ = knit on RS, purl on WS

 = Sl 6 sts on cn, and hold to back, K6, knit sts from cn

 = Sl 6 sts on cn, and hold to front, K6, knit sts from cn

Viking Sportsragg

Hat and mittens

1503-8

Size: Woman

ALTERNATIVE YARNS: Viking Sportsragg (60% wool, 20% nylon, 20% acrylic), Viking Superwash (100% wool, superwash), Viking Sportsgarn (100% wool), Viking Merino Superfine (100% merinowool, superwash), 50 g ball

Circular needle and double pointed needles size 3 and 3 ½ mm – US 2 or 3 and 4 – UK/Canadian 11 and 10 or 9

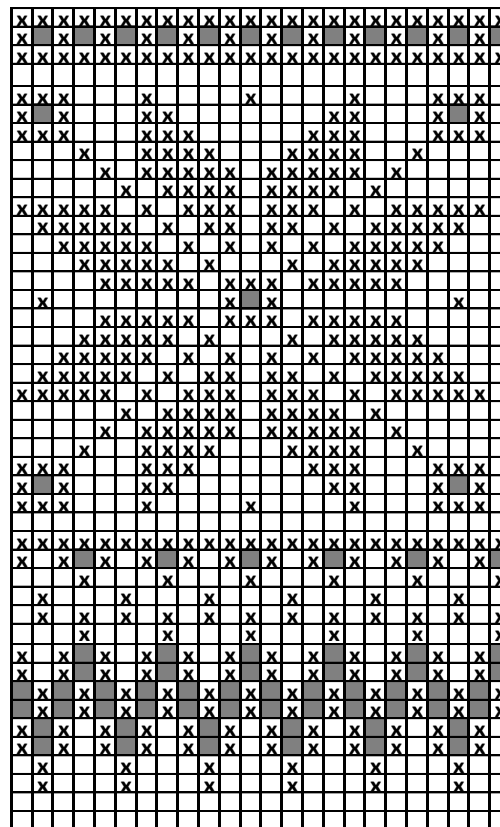
Gauge: 23 sts = approx. 10 cm/4 in over St st using needles size 3 ½ mm.

Check your gauge to ensure success.

HAT

Black, 550:	3 balls
Off-White, 502:	1 ball
Brown, 519:	1 ball

Using needles size 3 mm and black yarn, cast on 120 sts. Work in rnds approx. 12 cm/4.7 in in K1,P1 rib. Change to needles size 3 ½ mm and black yarn. Knit 1 rnd, and inc evenly across number of sts to be 144 sts. Cont working in rnds in patt as charted. When patt is ready, cont working in St st with black yarn. When work measures approx. 29 cm/11.4 in (measured from cast-on edge), beg dec for crown: Knit all sts tog in pairs. Work 1 rnd in St st. Rep dec every 2nd rnd until 18 sts rem. Break yarn, thread through rem sts, tighten the yarn, and weave in on WS. Make a large pom-pom, and fasten it on top. Weave in all ends on WS. Dampen work slightly.



□ = black
 x = white
 ■ = beige

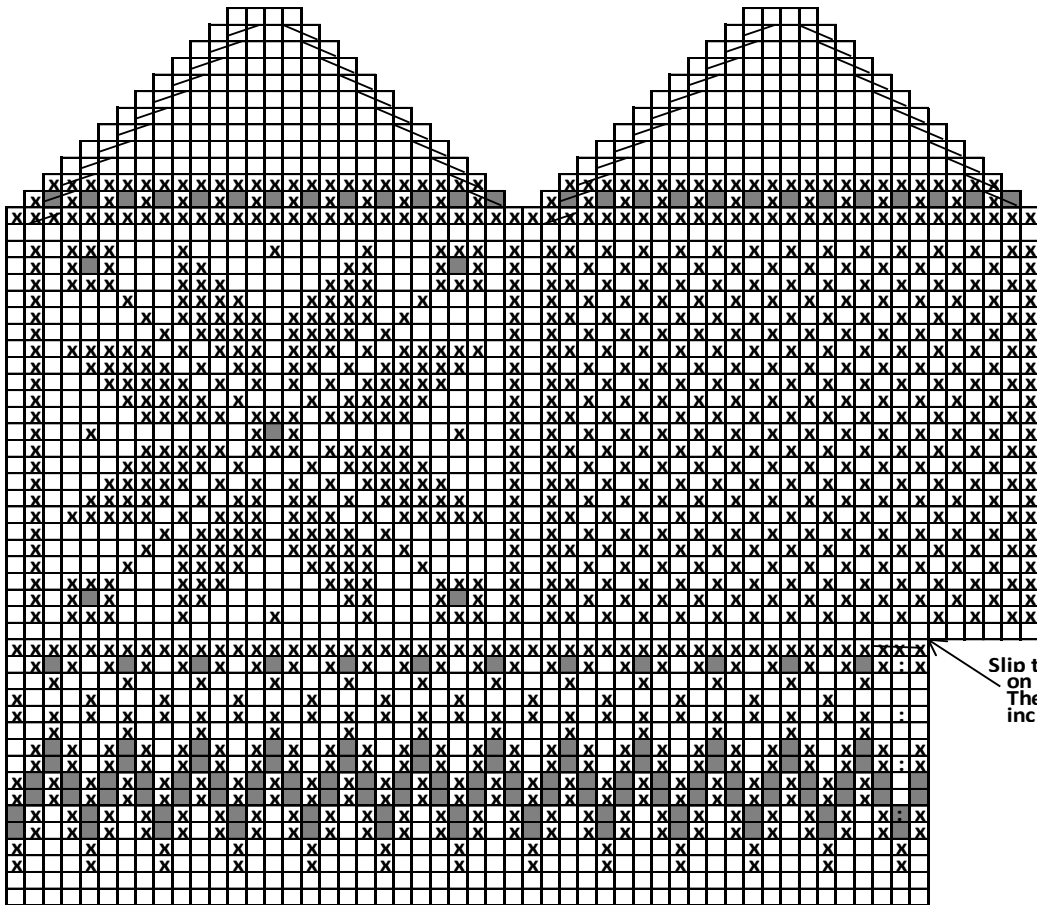
MITTENS

(woman)

Black, 550:	2 balls
Off-White, 500:	1 ball
Brown, 519:	1 ball

Using needles size 3 mm and black yarn, cast on 50 sts. Work in rnds 8 cm/3.1 in in K1,P1 rib. Change to needles size 3 ½ mm. Work in patt, and inc for thumb gusset as charted. Slip 11 thumb sts on holder where the arrow points out. Cast on 9 sts above thumb gusset sts. Cont working in patt as charted. Break yarn, thread through rem sts, and weave in on WS.

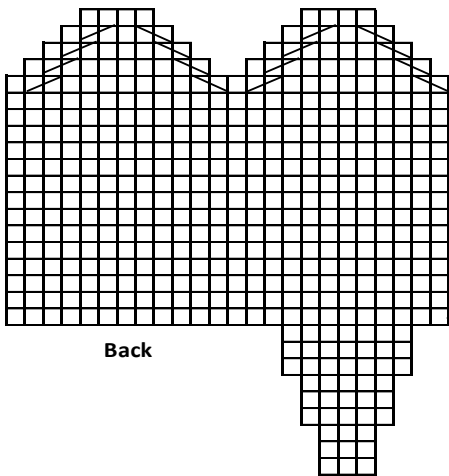
Thumb: Slip thumb sts from holder on needles size 3 ½ mm. Pick or knit up 11 sts from upper edge of thumb opening + 1 st from each side. There is now 24 sts on a rnd. Work as charted for thumb. Dec same as for mitten.



Slip thumb sts
on holder
These 3 sts +
inc sts = 11 sts

Inc here for thumb gusset,
these sts + inc sts will be slipped on holder

PATTERN FOR THUMB



Back

Slip thumb sts
on holder
here

- = black
- = brown (sew sts for star motif afterwards)
- ⊗ = off-white
- ⊠ = 2 inc, 1 st both sides of the st
- ▤ = Sl 1 st, K1, pssso
- ▥ = K2tog