

Viking Alpaca Fine

Sol cardigan

1415-1

Size 2-4-6-8-10-12 yrs

Chest: 61-64-70-75-78-81 cm

24-25.2-27.6-30.7-31.9 in

Length: 35-40-45-50-54-56 cm

13.8-15.7-17.7-19.7-21.3-22 in

Sleeve length: 24-29-33-36-38-42 cm

9.4-11.4-13-14.2-15-16.5 in

ALTERNATIVE YARN: Viking Alpaca Fine (85% alpaca, 15% highland wool), Viking Baby Ull (100% merino wool, Superwash), 50 g ball

Pink, 665: 3-3-3-4-4-4 balls

White, 600: 2-2-2-3-3-3 balls

Violet, 669: 1-1-1-2-2-2 balls

Circular needle and double pointed needles size 2 ½ and 3 mm – US 1 or 2 and 2 or 3 – UK/Canadian 13 or 12 and 11

+ 6-6-6-7-7-7 buttons

Gauge: 28 sts = approx. 10 cm/4 in over St st using needles size 3 mm. **Check your gauge to ensure success.**

When working in patt with 2 clr, it's important to maintain the order of yarns over your finger. Always hold the darker clr in front throughout the whole project.

Cardigan

Using needles size 2½ mm and pink yarn, cast on 181-189-205-221-229-237 sts. Work back and forth 3 cm/1.2 in in K1,P1 rib. Slip first and last 10 sts on holders (= front band sts). Change to needles size 3 mm. Work 1 rnd in St st, and cast on 5 sts to the end of the row (purl these new sts with basic clr throughout the work, to be cut open later on). Cont working in rnds in patt as charted. Place markers at each side, 83-87-95-103-107-111 sts for back, and 39-41-45-49-51-53 sts for both fronts (5 mid front sts not incl). When work measures 35-40-45-50-54-56 cm/13.8-15.7-17.7-19.7-21.3-22 in (end with a complete or half border). Bind off, or slip sts on holder.

Sleeves

Using needles size 2½ mm and pink yarn, cast on 42-42-44-48-50-52 sts. Work in rnds 3 cm/1.2 in in K1,P1 rib. Change to needles size 3 mm. Work 1 rnd in St st, and inc 1 st (same for all sizes). Cont working in rnds in St st and patt as charted. Place a marker beg of rnd = mid under sleeve. Inc 1 st both sides of the marker approx. every 1 ½ cm/0.6 in (same for all sizes) until there is 73-79-83-89-95-99 sts on a rnd. When sleeve measures the given length, or as desired (end with a complete or half border). Turn sleeve inside out, and work 7 rnds in St st with basic clr for seamline. Bind off rather loosely.

Work same for the other sleeve.

Finishing

Dampen work from WS. Sew 2 dense zigzag seams around armholes (measure width from sleeves) and mid front. Cut open between the seams. Sew normal zigzags over cut edges. Join shoulder seams, 21-23-26-30-31-32 sts for each shoulder.

Left front band: Slip 10 sts from holder over needles size 2 ½ mm. Cont working in rib, and cast on 5 new sts with pink yarn to the edge facing the body. Work St st over the cast-on sts = seamline. When front band measures approx. 5-5-6-6-6-7 cm/2-2-2.4-2.4-2.4-2.8 in less than total length (it's important that front band is not too long), bind off seamline sts, and slip rem sts on holder.

Work same for right front, but with 6-6-6-7-7-7 buttonholes.

Make first buttonhole on first row after lower edge rib, last one

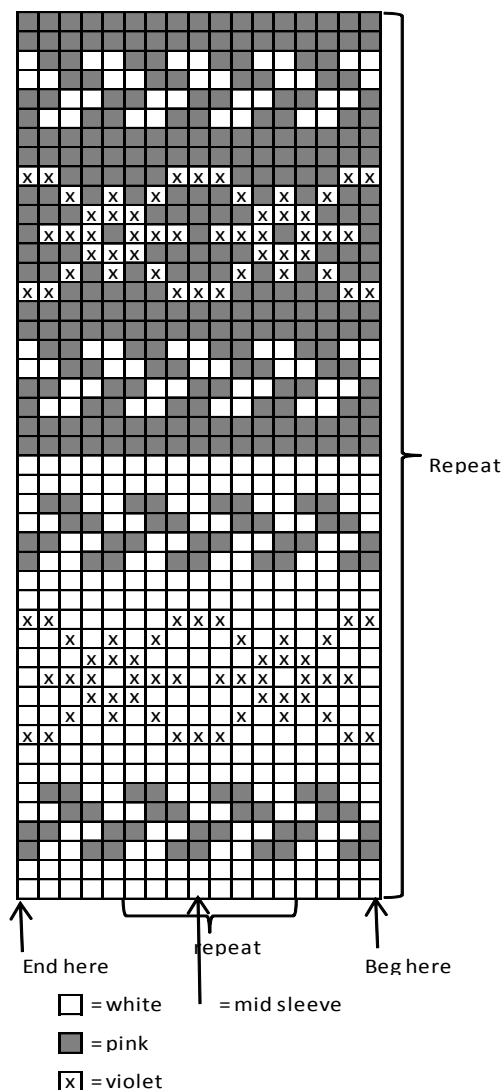
on last row before neck edge, and rest evenly spaced apart. Bind off seamline sts.

Neckband: Sew a curving marker thread for neck edge on both fronts, starting mid front approx. 5-5-6-6-6-7 cm/2-2-2.4-2.4-2.4-2.8 in below upper edge. Using needles size 3 mm and pink yarn, pick or knit up sts from neck edge: Beg from right front, slip sts from holder, pick up approx. 17-19-21-21-23-25 sts along the marked line, 39-39-41-43-45-45 sts from back, 17-19-21-21-23-25 sts along left front, and slip front band sts from holder = 93-97-103-105-111-115 sts on a row. Work back and forth 3 cm/1.2 in in K1,P1 rib. Bind off first and last 10 sts, purl 1 row over rem sts = folding edge + 3 cm/1.2 in rib. Bind off in rib.

Sew 2 dense zigzag seams inside neck edge. Cut off extras. Sew normal zigzag over cut edges. Fold neckband in double, and sew on WS over the cut edge.

Sew on front bands. Sew seam allowances over the seams. Sew on sleeves, and sew seam allowances over the cut edges. Sew on buttons.

Weave in all ends on WS.



Viking Alpaca Fine

Snorre sweater

1415-2

Size: 2-4-6 yrs

Chest: 60-64-69 cm

23.6-25.2-27.2 in

Length: 36-40-45 cm

14.2-15.7-17.7 in

Sleeve length: 23-28-31 cm

9.1-11-12.2 in

ALTERNATIVE YARN: Viking Alpaca Fine (85% alpaca, 15% highland wool), Viking Baby Ull (100% merino wool, Superwash), 50 g ball

Grey, 615:- 4-4-4 balls

Light Grey, 613:-1-1-1 ball

Turquoise, 668 :-1-1-1 ball

White, 600:-2-2-2 balls

Circular needle and double pointed needles size 2 ½ and 3 mm – US 1 or 2 and 2 or 3 – UK/Canadian 13 or 12 and 11

When working in patt with 2 clr, it's important to maintain the order of yarns over your finger. Always hold the darker clr in front throughout the whole project.

Gauge: 28 sts = approx. 10 cm/4 in over St st using needles size 3 mm. **Check your gauge to ensure success.**

Using needles size 2½ mm and grey yarn, cast on 168-180-192 sts. Work in rnds 4-4-5 cm/1.6-1.6-2 in in K2,P2 rib. Change to needles size 3 mm. Work 1 rnd in St st, and after that cont working in patt A as charted. Place markers at each side, 85-91-97 sts for front, and 83-89-95 sts for back. Cont working in patt B until work measures approx. 22-25-29 cm/8.7-9.8-11.4 in. End with 2 rnds in St st with grey yarn. Bind off on last rnd 10-10-12 sts at each side for armholes = 5-5-6 sts both sides of the markers. Leave work aside, and knit the sleeves..

Sleeves

Using needles size 2½ mm and grey yarn, cast on 48-48-52 sts. Work in rnds 4-4-5 cm/1.6-1.6-2 in in K2,P2 rib. Change to needles size 3 mm. Place a marker mid sleeve = beg of rnd. Work 1 rnd in St st, and inc evenly across number of sts to be 51-55-59 sts. Work in patt A, after that in patt B as charted, and inc same time 1 st both sides of the marker approx. every 3½ cm/1.4 in. When sleeve measures 23-28-31 cm/9.1-11-12.2 in, or desired length, and there is 61-67-73 sts on a rnd, bind off 10-10-12 sts mid under sleeve = 5-5-6 sts both sides of the marker.

Note! Last rnd must be same as last rnd of the body.

Leave work aside, and knit same for the other sleeve.

Yoke

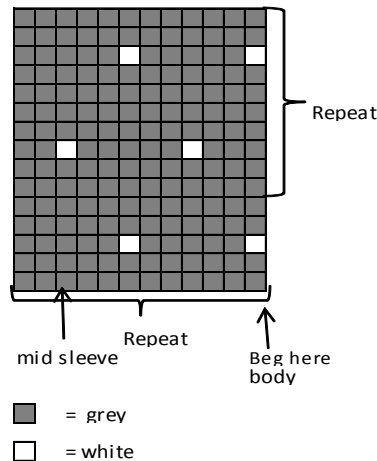
Slip all pieces on same circular needle, with sleeves over the bound-off armhole sts = 250-274-290 sts, and adjust number of sts to be 252-276-288 sts. Beg from back, from right shoulder. Check from mid back where to beg patt. Work first in patt A, and after that in patt C as charted. Dec as charted, and end where arrows point out. There is now 105-115-120 sts on a rnd. Cont working with light grey yarn. Work 1 rnd in St st, and dec evenly across number of sts to be 100-108-112 sts. Work 6 cm/2.4 in in K2,P2 rib. Bind off rather loosely in rib.

Finishing

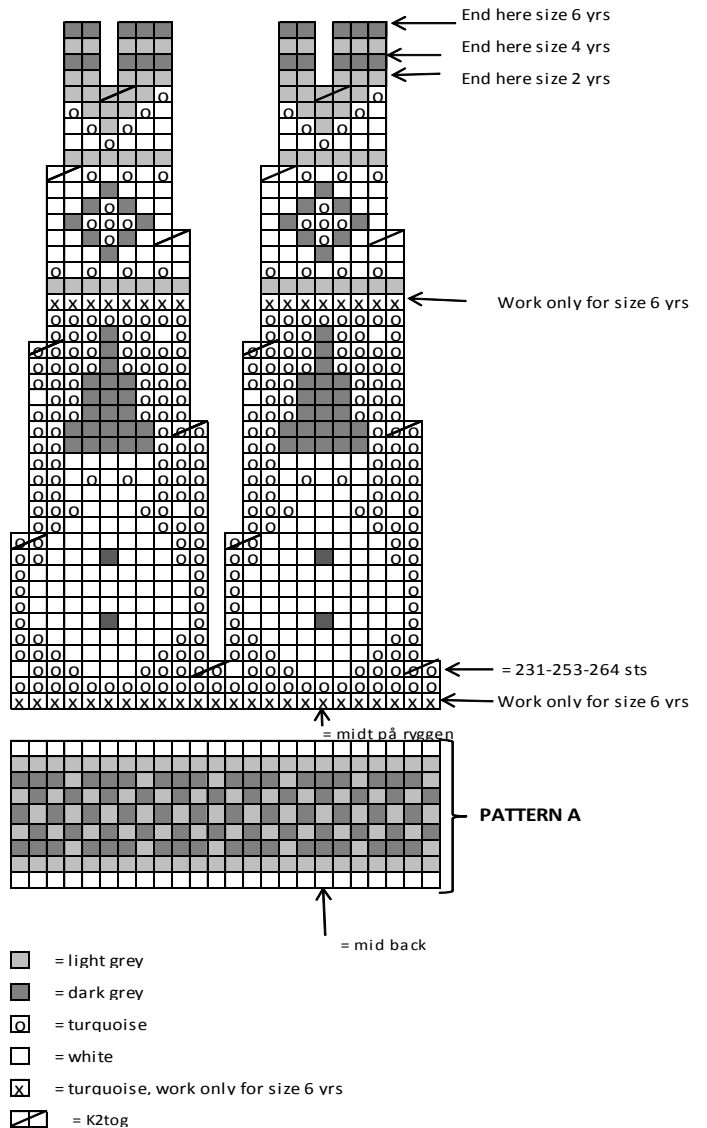
Fold neckband in double, and sew on WS.

Sew underarm seams.

PATTERN B



PATTERN C



PATTERN A

Viking Alpaca Fine

Gully dress

1415-3

Size: 2-4-6 yrs

Chest: 52-56-59 cm

20.5-22-23.2 in

Length: 48-52-57 cm

18.9-20.5-22.4 in

Sleeve length: 23-28-31 cm

9.1-11-12.2 in

ALTERNATIVE YARN: Viking Alpaca Fine (85% alpaca, 15% highland wool), Viking Baby Ull (100% merino wool, Superwash), 50 g ball

Light Grey, 613:- 4-4-4 balls

Grey, 615:- 1-1-1 ball

Light Pink, 665:- 1-1-1 ball

White, 600:- 2-2-2 balls

Circular needle and double pointed needles size 3 mm – US 1 or 2 and 2 or 3 – UK/Canadian 13 or 12 and 11
+ 38-42-44 small silver pearls

Gauge: 28 sts = approx. 10 cm/4 in over St st using needles size 3 mm. **Check your gauge to ensure success.**

When working in patt with 2 clrs, it's important to maintain the order of yarns over your finger. Always hold the darker clr in front throughout the whole project.

Using needles size 3 mm and white yarn, cast on 276-300-324 sts. Work in rnds 3 cm/1.2 in in St st. Next rnd: *K2tog, 1yo*, rep *.* across the rnd = folding edge. Work in patt A as charted, and after that cont working in patt B until work measures approx. 34-37-41 cm/13.4-14.6-16.1 in. End with 2 rnds with light grey.

Cont working with light grey yarn, and dec evenly across number of sts to be 146-158-166 sts. Place markers at each side, 73-79-83 sts for both back and front. Work 1 rnd in St st, and bind off 10-10-12 sts at each side for armholes = 5-5-6 sts both sides of the markers. Leave work aside, and knit the sleeves.

Sleeves

Using needles size 3 mm and white yarn, cast on 48-48-52 sts. Knit 1 row, and work in rnds 3 cm/1.2 in in St st. Place a marker mid under sleeve = beg of rnd. Work same for folding edge as for body. Work in patt A, and after that cont working in patt B, but in evenly across 1st rnd number of sts to be 51-55-59 sts. Inc 1 st both sides of the marker approx. every 4 cm/1.6 in. Cont working until sleeve measures 23-28-31 cm/9.1-11-12.2 in (measured from folding edge), and there is 61-67-73 sts on a rnd. Note! End with same patt rnd as for body. Bind off 10-10-12 sts mid under sleeve = 5-5-6 sts both sides of the marker.

Leave work aside, and knit same for the other sleeve.

Yoke

Slip all pieces on same circular needle, with sleeves over bound-off armhole sts = 228-252-264 sts. Beg from back, from right shoulder, check from mid back st where to beg patt. Work in patt A, and after that in patt C as charted. Dec and end as charted. There is now 114-105-110 sts on a rnd. Cont working with white yarn. Work 2 rnds in St st, and dec evenly across 2nd rnd number of sts to be 100-104-110 sts. Work 6 cm/2.4 in in K1,P1 rib. Bind off rather loosely in rib.

Finishing

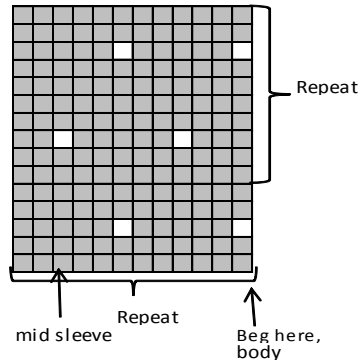
Fold neck edge in double, and sew on WS.

Sew underarm seams.

Fold lower edge in double, and sew on WS.

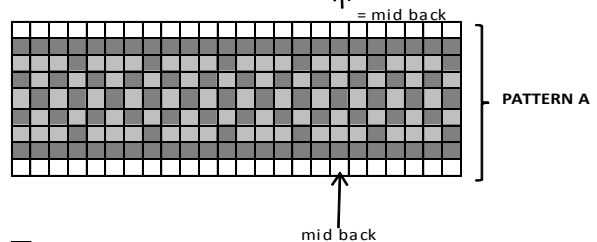
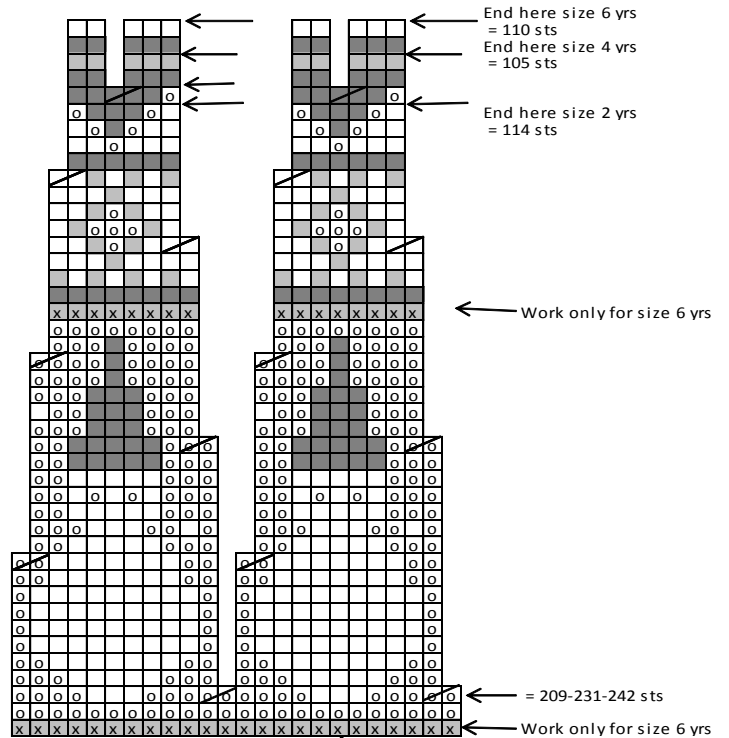
Sew on pearls on each snowman as 'buttons'.

PATTERN B



■ = light grey
□ = white

PATTERN C



■ = light grey
■ = dark grey
□ = pink
□ = white
□ = pink, work only for size 6 yrs
□ = K2tog

Viking Alpaca Fine

Fana sweater

1415-4

Size: 2- 4- 6- 8- 10- 12 yrs

Chest: 56- 60- 64- 69- 73- 77 cm

22-23.6-25.2-27.2-28.7-30.3 in

Length: 36- 40- 45- 50- 54- 58 cm

14.2-15.7-17.7-19.7-22.8 in

Sleeve length: 23- 28- 31- 36- 40- 43 cm

9.1-11-12.2-14.2-15.7-16.9 in

ALTERNATIVE YARNS: Viking Alpaca Fine (85% alpaca, 15% highland wool), Viking Baby Ull (100% merino wool, Superwash), 50 g ball

White, 600: 2-2-2-2-3-3 balls
 Navy Blue, 627: 2-2-2-2-3-3 balls
 Grayish Blue, 626: 1-1-1-1-2-2 balls
 Turquoise, 668: 1-1-1-1-1-1 ball

Circular needle size 2 ½ and 3 mm – US 1 or 2 and 2 or 3 – UK/Canadian 13 or 12 and 11

Gauge: 28 sts = approx. 10 cm/4 in over St st using needles size 3 mm. **Check your gauge to ensure success.**

When working in patt with 2 clr, it's important to maintain the order of yarns over your finger. Always hold the darker clr in front throughout the whole project.

Using needles size 2 ½ mm and turquoise yarn, cast on 168 – 180 – 192 – 204 – 216 – 228 sts. Work in rnds approx. 2 cm/0.8 in K1,P1 rib. Change to needles size 3 mm. Work in patt A. Place markers at each side, 85 – 91 – 97 – 103 – 109 – 115 sts for front, and 83 – 89 – 95 – 101 – 107 – 113 sts for back. When patt A is ready, cont working in rnds in patt B, rep 5-6-7-8-9-10 times, and after that a blue stripe (work measures now approx. 22 – 25 – 29 – 33 – 36 – 39 cm/8.7-9.8-11.4-13-14.2-15.4 in). Bind off on last rnd 10 sts at each side for armholes (5 sts both sides of the markers). Leave work aside, and knit the sleeves.

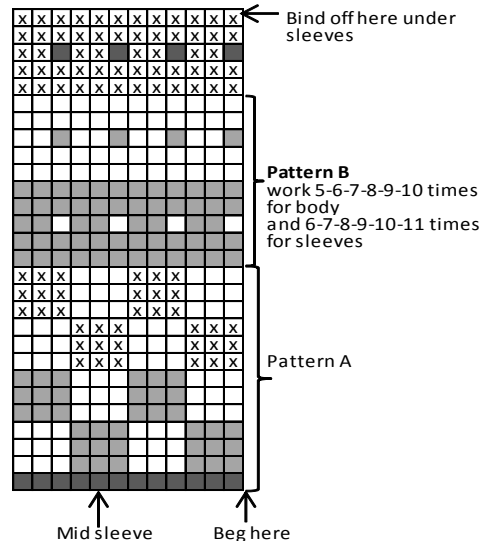
Sleeves: Using needles size 2 ½ mm and turquoise yarn, cast on 42-42-48-48-54-54 sts. Work in rnds approx. 2 cm/0.8 in in K1,P1 rib. Change to needles size 3 mm, and work in patt A. When patt A is ready, work in patt B, and inc evenly across 2nd rnd number of sts to be 47 – 49 – 51 – 53 – 55 – 57 sts. Place a marker beg of rnd (= mid under sleeve). Inc 1 st both sides of the marker approx. every 2 cm/0.8 in (same for all sizes). Rep patt B 6-7-8-9-10-11 times. Knit a blue stripe after patt B. There is now 63 – 69 – 75 – 81 – 87 – 93 sts on a rnd, and sleeve measures approx. 23 – 28 – 31 – 36 – 40 – 43 cm/9.1-11-12.2-14.2-15.7-16.9 in. Bind off on last rnd 11 sts mid under sleeve (bind off so that patt is same at each edge). Work same for the other sleeve.

Yoke: Slip all pieces on same circular needle, with sleeves over the bound-off armhole sts = 252-276-300-324-348-372 sts on a rnd. Beg from back, from left shoulder. Work in patt C and dec as charted, cont working with stripes and rep dec every 5th-5th-6th-6th-6th-7th rnd same as before (1 st less between each dec) until 100 – 110 – 120 – 104 – 112 – 120 sts rem on a rnd (end with a complete stripe). Dec evenly across last rnd number of sts to be, size 2 yrs 96 sts, size 4 yrs 100 sts, and size 6 yrs 104 sts.

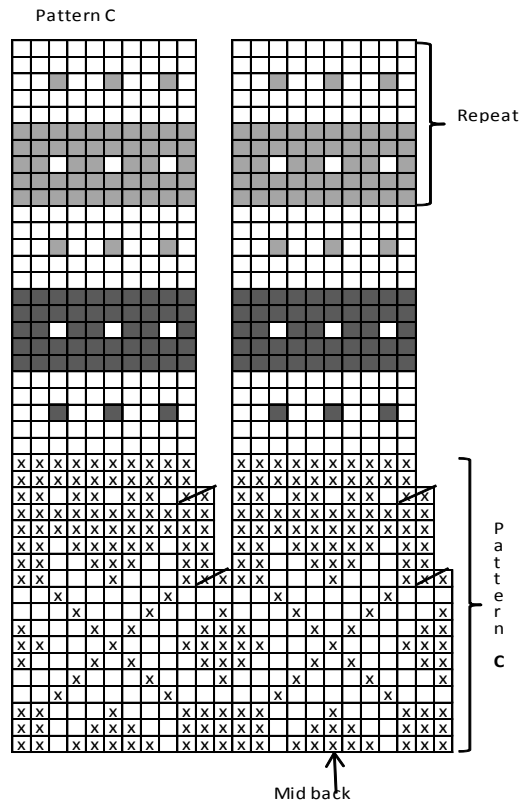
Neckband: Change to needles size 2 ½ mm and navy blue yarn. Work 2 rnds in St st, and after that in rnds approx. 5 – 5 – 6 – 6 –

6 – 6 cm/2-2-2.4-2.4-2.4-2.4 in in K1,P1 rib. Bind off rather loosely in rib. Fold neckband in double, and sew on WS.

Finishing: Sew underarm seams. Weave in all ends on WS.



- = navy blue
- = white
- = turquoise
- x = blue
- / = K2tog



Viking Alpaca Fine

Trym sweater

1415-5

Size	2	4	6/8	10	12 yrs
Chest:	60	66	71	80	86 cm
	23.6	26	28	31.5	33.9 in
Length:	36	40	48	54	58 cm
	14.2	15.7	18.9	21.3	22.8 in
Sleeve length:	23	28	34	40	43 cm
	9.1	11	13.4	15.7	16.9 in

ALTERNATIVE YARNS: Viking Alpaca Fine (85% alpaca, 15% highland wool), Viking Baby Ull (100% merino wool, Superwash), 50 g ball

Grey, 615:	4	4	5	6	6 balls
Beige, 607:	1	1	1	1	1 ball
White, 600:	1	1	1	1	1 ball
Turquoise, 668:	1	1	1	1	1 ball

Circular needle and double pointed needles size 2 ½ and 3 mm – US – UK/Canadian

Gauge: 28 sts = approx. 10 cm/4 in over St st using needles size 3 mm. **Check your gauge to ensure success.**

When working in patt with 2 clrs, it's important to maintain the order of yarns over you finger. Always hold the darker clr in front throughout the whole project.

Body

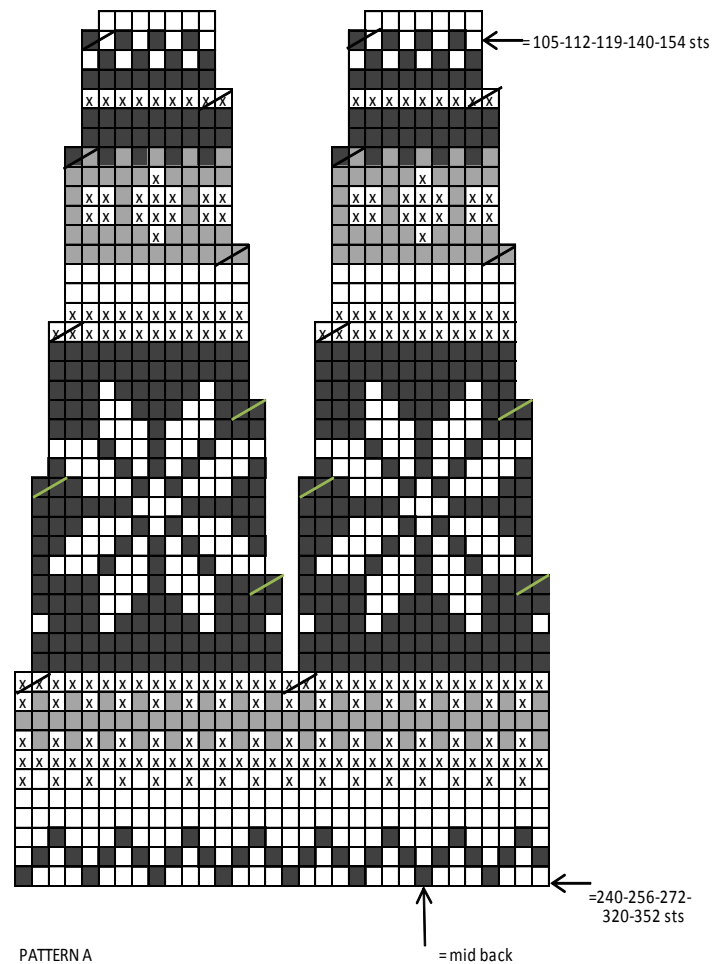
Using needles size 2½ mm and grey yarn, cast on 168-184-200-224-240 sts. Work in rnds 4-5-5-6-6 cm/1.6-2-2-2.4-2.4 in in K1,P1 rib. Change to needles size 3 mm. Cont working in rnds in St st and patt A as charted. Place markers at each side, 85-93-101-113-121 sts for front, and 83-91-99-111-119 sts for back. When work measures approx. 22-25-32-36-39 cm/8.7-9.8-12.6-14.2-15.4 in, bind off. 12-12-16-16-16 sts at each side (6-6-8-8-8 sts both sides of the markers). Leave work aside, and knit the sleeves.

Sleeves

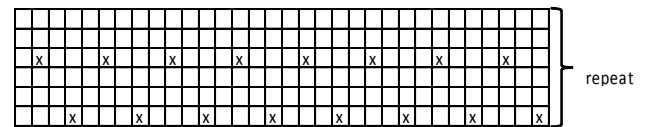
Using needles size 2½ mm and grey yarn, cast on 44-48-48-52-52 sts. Work in rib same as for body. Change to needles size 3 mm. Knit 1 rnd, and inc evenly across number of sts to be 51-55-59-63-67 sts. Cont working in St st and patt A as charted. Place a marker beg of rnd = mid under sleeve. Inc 1 st both sides of the marker approx. every 3 ½ - 3 ½ - 4-3-3 cm/1.4-1.4-1.6-1.2-1.2 in until there is altog. 61-67-73-85-91 sts on a rnd. When sleeve measures the given length, or as desired (**Note! End with same rnd as body!**), bind off 12-12-16-16-16 sts mid under sleeve (6-6-8-8-8 sts both sides of the marker). Slip rem sts on holder. Leave work aside, and work same for the other sleeve.

Yoke: Slip all pieces on same circular needle, with sleeves over the bound-off armhole sts = 242-270-282-330-358 sts on a rnd. Work 1-3-5-7-9 rnds in St st with grey yarn. Dec evenly across first rnd number of sts to be 240-256-272-320-352 sts. Cont working in rnds in patt B and dec as charted until 105-112-119-140-154 sts rem. Work 1 rnd in St st over all sts with grey yarn, and dec evenly across number of sts to be 100-108-112-120-126 sts. Work 5-5-6-6-6 cm/2-2-2.4-2.4-2.4 in in K1,P1 rib. Bind off rather loosely. Fold neckband in double, and sew on WS. Sew underarm seams. Weave in all ends on WS.

PATTERN B



PATTERN A



- = grey
- = Turquoise
- = K2tog
- = beige
- = white

Viking Alpaca Fine

Kari cardigan

1415-6

Size: 4-6-8-10-12 yrs

Chest: 67-70-78-81-87 cm

26.4-27.6-30.7-31.9-34.3 in

Length: 40-45-50-54-58 cm

15.7-17.7-19.7- 21.3-22.8 in

Sleeve length: 28-31-36-40-43 cm

11-12.2-14.2-15.7-16.9 in

ALTERNATIVE YARNS: Viking Alpaca Fine (85% alpaca, 15% highland wool), Viking Baby Ull (100% merino wool, Superwash), 50 g ball

Grayish Blue, 626: 4-4-5-5-6 balls

Charcoal, 603 : 1 1-1-1-1 ball

Off-White, 602: 1-1-1-1-1 ball

Rust, 650: 1-1-1-1-1 ball

Beige, 607: 1-1-1-1-1 ball

Circular needle and double pointed needles size 2 ½ and 3 mm – US 1 or 2 and 2 or 3 – UK/Canadian 13 or 12, and 11 + 7-7-7-8-8 buttons

Gauge: 28 sts = approx. 10 cm/4 in over St st using needles size 3 mm. **Check your gauge to ensure success.**

When working in patt with 2 clrs, it's important to maintain the order of yarns over your finger. Always hold the darker clr in front throughout the whole project.

Using needles size 2½ mm and grayish blue yarn, cast on 197-205-229-237-253 sts. Work back and forth in K1,P1 rib. When rib measures 2 cm, make 1 buttonhole inside 3 sts. Buttonhole: Bind off 3 sts. Next row: Cast on 3 sts over the bound-off sts. When rib measures 4-4-4-5-5 cm/1.6-1.6-1.6-2-2 in, slip first and last 10 sts over holders (= sts for front bands). Place markers at each side, 42-44-50-52-56 sts for both fronts, and 93-97-109-113-121 sts for back. Change to needles size 3 mm, and off-white yarn. Work 1 row in St st, and cast on 5 sts to the end of the rnd. Purl these new sts every rnd (will be cut open later, and they are not incl. in number of sts). Work in patt A as charted. Cont working in grayish blue yarn until work measures 25-29-33-36-39 cm/9.8-11.4-13-14.2-15.4 in, measured from cast-on edge, or as desired before armholes. Bind off 10 sts at each side for armholes = 5 sts both sides of the markers. Leave work aside, and knit the sleeves.

Sleeves

Using needles size 2½ mm and grayish blue yarn, cast on 48-48-50-50-52 sts. Work in rnds 4-4-4-5-5 cm/1.6-1.6-2-2 in in K1,P1 rib. Change to needles size 3 mm. Work 1 rnd in St st, and inc evenly across number of sts to be 57-59-61-63-65 sts. Place a marker mid under sleeve = beg of rnd. Cont working in patt A as charted (check from mid st where to beg patt), after that with grayish blue, but inc 1 st both sides of the marker approx. every 4-3 ½-3-3-3 cm/1.6-1.4-1.2-1.2-1.2 in.

When sleeve measures the given length, or as desired, and there is 69-73-79-85-89 sts on a rnd, bind off 10 sts mid under sleeve = 5 sts both sides of the marker.

Leave work aside, and knit same for the other sleeve.

Yoke

Slip all pieces on same circular needle, with sleeves over the bound-off armhole sts = 275-291-327-347-371 sts. Knit 1 rnd, and adjust number of sts to be 273-289-321-337-369 sts. Cont working in patt B, and dec as charted.

Note: Sizes 8-10-12yrs: Work 4 extra rnds (marked in the chart).

When patt A is ready, and there is 86-91-101-106-116 sts on a rnd, rep last 0-2-0-2-4 rnds of the patt.

Bind off 5 mid front sts. Sew 2 dense zigzag seams mid front.

Cut open between seams. Sew normal zigzag over cut edges.

Front bands

Slip left front band sts on needles size 2 ½ mm. Cont working in rib same as before, and cast on 5 new sts to the edge facing to body = seam allowance, worked in St st. When front band measures same as cardigan (Note! Stretch slightly when measuring), bind off seam allowance sts, and leave rem sts on holder.

Work same as for left front band. Make 6-7-7-8-8 buttonholes evenly spaced apart, first is already there, and last one will be at neck edge.

Slip front band sts on same circular needle as body. Change to grayish blue yarn. Work 2 rows in rib over front band sts, and St st over rem sts, and dec evenly across St sts number of sts to be 100-102-104-106-108 sts on a row. Work back and forth 3 cm/1.2 in in K1,P1 rib (don't forget the buttonhole). Bind off 10 sts at each edge, and cont working 3 cm/1.2 in in rib. Bind off in rib.

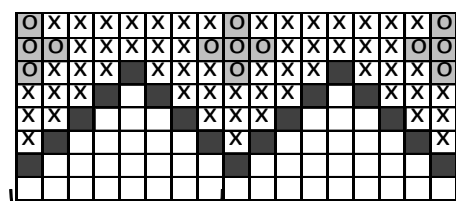
Finishing

Fold neckband in double, and sew on WS. Sew on sleeves. Sew on front bands, and sew seam allowances over cut edges.

Sew on buttons.

Weave in all ends on WS.

PATTERN A

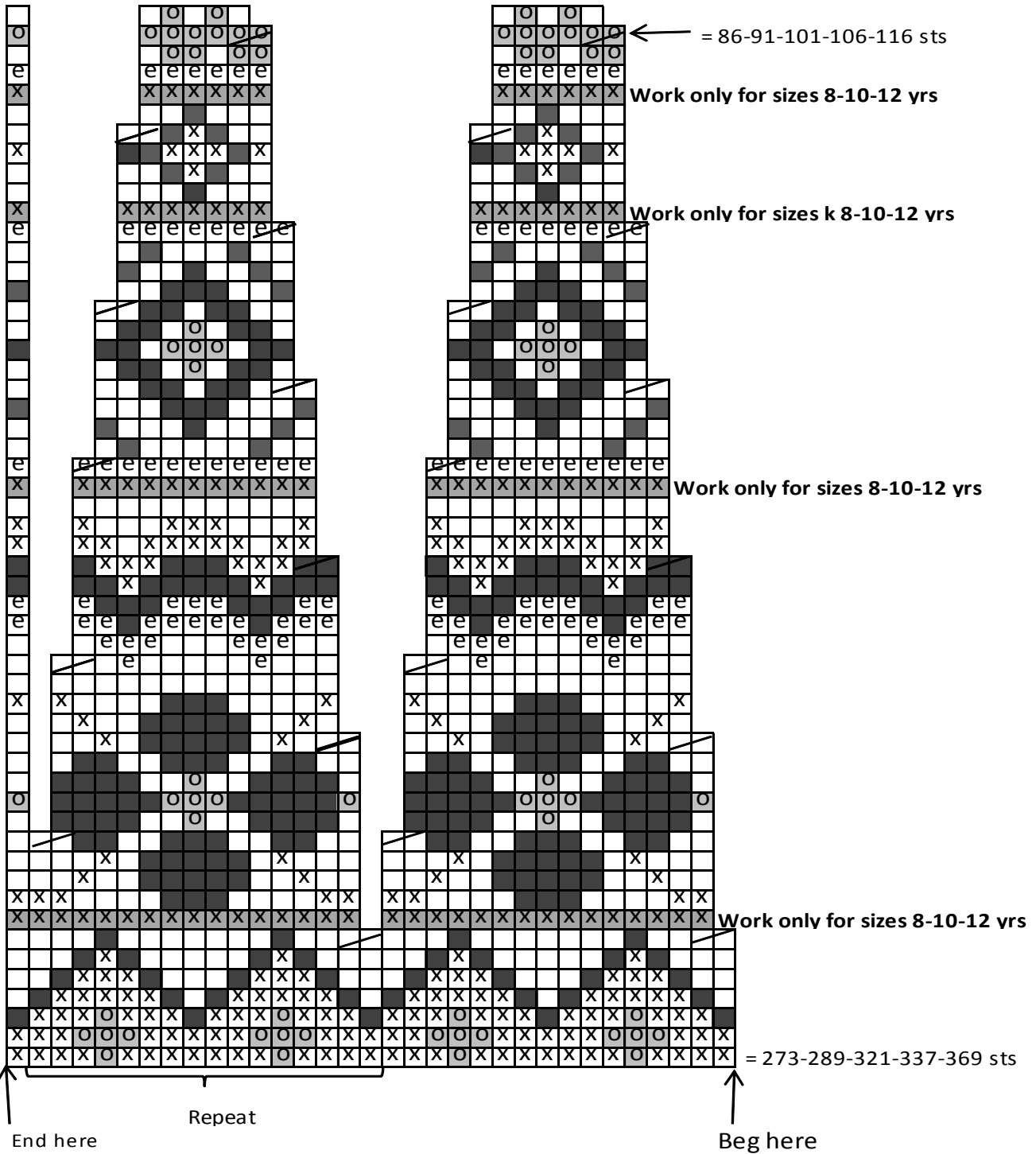


Repeat
mid sleeve

Beg here, body

- = white
- = charcoal
- = rust
- = grayish blue

PATTERN B



- = white
- = charcoal
- = rust
- = grayish blue
- = beige
- = white work only for sizes 8-10-12 yrs

Viking Alpaca Fine

Setedals cardigan

1415-7

Size: 2- 4- 6- 8- 10- 12 yrs
Chest: 59-63-68-72-76-80 cm
 23.2-24.8-26.8-28.3-29.9-31.5 in
Length: 33-36-40-45-48-52 cm
 13-14.2-15.7-17.7-18.9-20.5 in
Sleeve length: 23-28-31-36-40-43 cm
 9.1-11-12.2-14.2-15.7-16.9 in

ALTERNATIVE YARNS: Viking Alpaca Fine (85% alpaca, 15% highland wool), Viking Baby Ull (100% merino wool, Superwash), 50 g ball

Charcoal, 603: 2-3-3-4-4-5 balls
 White, 600: 2-2-3-3-4-4 balls
 Violet, 669: 1-1-1-1-1-1 ball

Circular needle size 2 ½ and 3mm – US 1 or 2 and 2 or 3 – UK/Canadian 13 or 12 and 11
 + 6-6-6-7-7-8 pairs of clasps

Gauge: 28 sts = approx. 10 cm/4 in over St st using needles size 3 mm. **Check your gauge to ensure success.**

When working in patt with 2 clrs, it's important to maintain the order of yarns over your finger. Always hold the darker clr in front throughout the whole project.

Using needles size 2½ mm and white yarn, cast on 406 – 436 – 466 – 496 – 526 – 556 sts. Work back and forth: K1,P1 rib over first 8 sts, Garter st over 390 – 420 – 450 – 480 – 510 – 540 sts, end with K1,P1 rib over last 8 sts.

After 3 rills, work next RS row as foll: K1,P1 rib over first 8 sts, *P3, inc 2 sts over next 4 sts (= 6 sts), P3 = patt I *, rep *-* until 8 sts rem, end with K1,P1 rib over last 8 sts. There is now 484 – 520 – 556 – 592 – 628 – 664 sts on a row (12 patt reports).

Work in patt I and dec as charted.

There is now 250-268-286-304-322-340 sts on a row. Slip first and last 8 sts on holders (= front band sts). Change to needles size 3 mm. Work 1 rnd in St st, and dec evenly across number of sts to be 157 – 169 – 181 – 193 – 205 – 217 sts (front band sts not incl.). Cast on 4 new sts to the end of the row (not worked in patt, to be cut open later on). Place markers at each side, 37 – 40 – 43 – 46 – 49 – 52 sts for both fronts, and 83 – 89 – 95 – 101 – 107 – 113 sts for back. Work in patt A, and rep dotted patt until work measures approx. 17 – 19 – 22 – 26 – 28 – 31 cm/ in (end with 3 rnds in charcoal clr yarn). Work in patt D. Bind off on last rnd 10 sts at each side for armholes (5 sts both sides of the markers). Leave work aside, and knit the sleeves.

Sleeves: Using needles size 2½ mm and violet yarn, cast on 44 – 44 – 48 – 48 – 52 – 52 sts. Work in rnds approx. 3 – 3 – 3 – 4 – 4 – 4 cm/1.2-1.2-1.2-1.6-1.6 in in 1,P1 rib. Change to needles size 3 mm. Work in patt B, and inc evenly across 1st rnd number of sts to be 47 – 47 – 51 – 51 – 55 – 55 sts. Place a marker beg of rnd. Inc 1 st both sides of the marker approx. every 2 ½ – 2 – 2 – 2 – 2 cm/1-0.8-0.8-0.8-0.8-0.8 in. There is now 63 – 69 – 75 – 81 – 87 – 93 sts on a rnd, and sleeve measures approx. 23 – 28 – 31 – 36 – 40 – 43 cm/9.1-11-12.2-14.2-15.7-16.9 in (end with 3 rnds in charcoal clr yarn). Work in patt D. Bind off on last rnd 11 sts mid under sleeve (6 sts before a marker, and 5 sts after a marker. Note! Bind off so that patt is same at each edge). Leave work aside, and knit same for the other sleeve.

Yoke: Knit all pieces on same circular needle, with sleeves over the bound-off armhole sts = 241 – 265 – 289 – 313 – 337 – 361 sts on a rnd. Work in patt C, and dec as charted. There is now 81 – 89 – 97 – 105 – 113 – 121 sts on a rnd.

Sizes 2, 4 and 6 yrs: Change to needles size 2 ½ mm. Work in patt E. Bind off 4 sts mid front (= sts to be cut open). Cont working back and forth with violet clr yarn. Knit 1 row from WS (= folding edge), and then 9 rows in St st. Bind off.

Sizes 8, 10 and 12 yrs: Change to needles size 2 ½ mm. Dec evenly across 1st rnd number of sts to be 97 – 101 – 105 sts. Work in patt E. Bind off 4 mid front sts (= sts to be cut open later on). Cont working back and forth with violet yarn. Knit 1 row from WS (= folding edge), and then 9 rows in St st. Bind off.

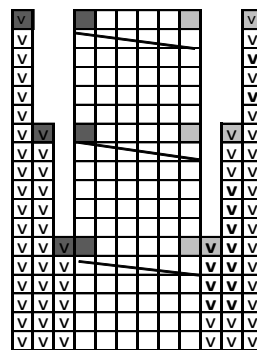
Finishing : Dampen work slightly from WS. Sew 2 dense zigzag seams mid front. Cut open between seams. Sew normal zigzags over cut edges.

Front bands: Slip 8 front band sts on needles size 2½ mm. Cast on 5 new sts to the edge facing the body. Work St st over the new sts (= seam allowance), and rib over front band sts. When front band measures until folding edge at neck (check that front band is not too long), bind off. Work same for the other front band.

Finishing: Sew on front bands. Sew seam allowances over cut edges. Fold neck band in double, and sew on WS. Sew underarm seams.

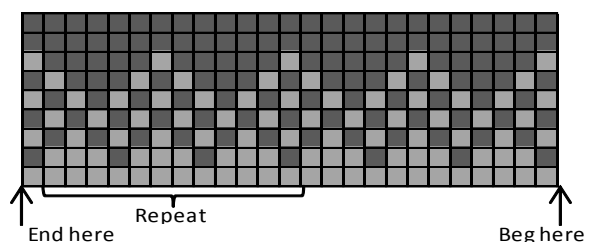
Sew on 6 – 6 – 6 – 7 – 7 – 8 pairs of clasps.

Pattern I

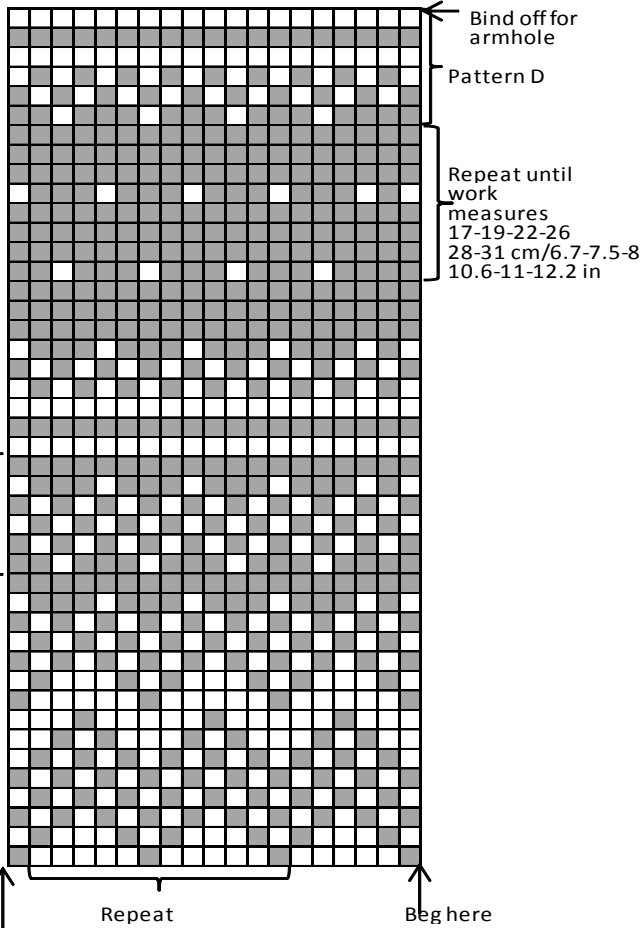


- = White, knit on RS, purl on WS
- ◻ = White, purl on RS, knit on WS
- ▬▬▬▬ = Slip 3 sts on cn, and hold to front, K3, knit sts from cn
- ▬▬ = K2tog
- ▬▬ = Slip 1 st, K1, pssso

Pattern E



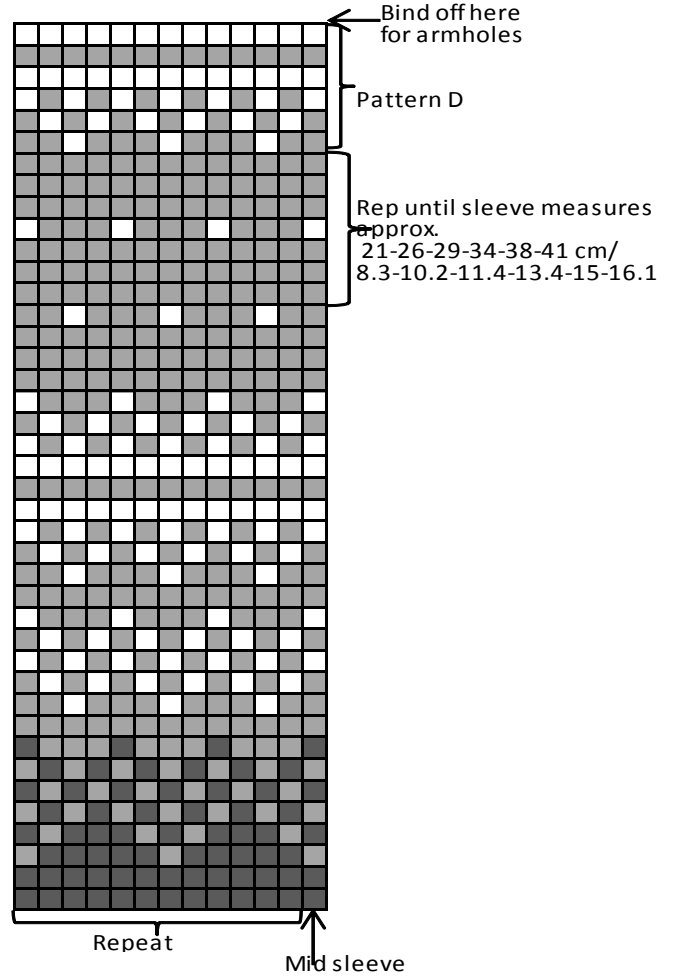
Pattern A



Not worked for sizes 2,4 and 6 yrs

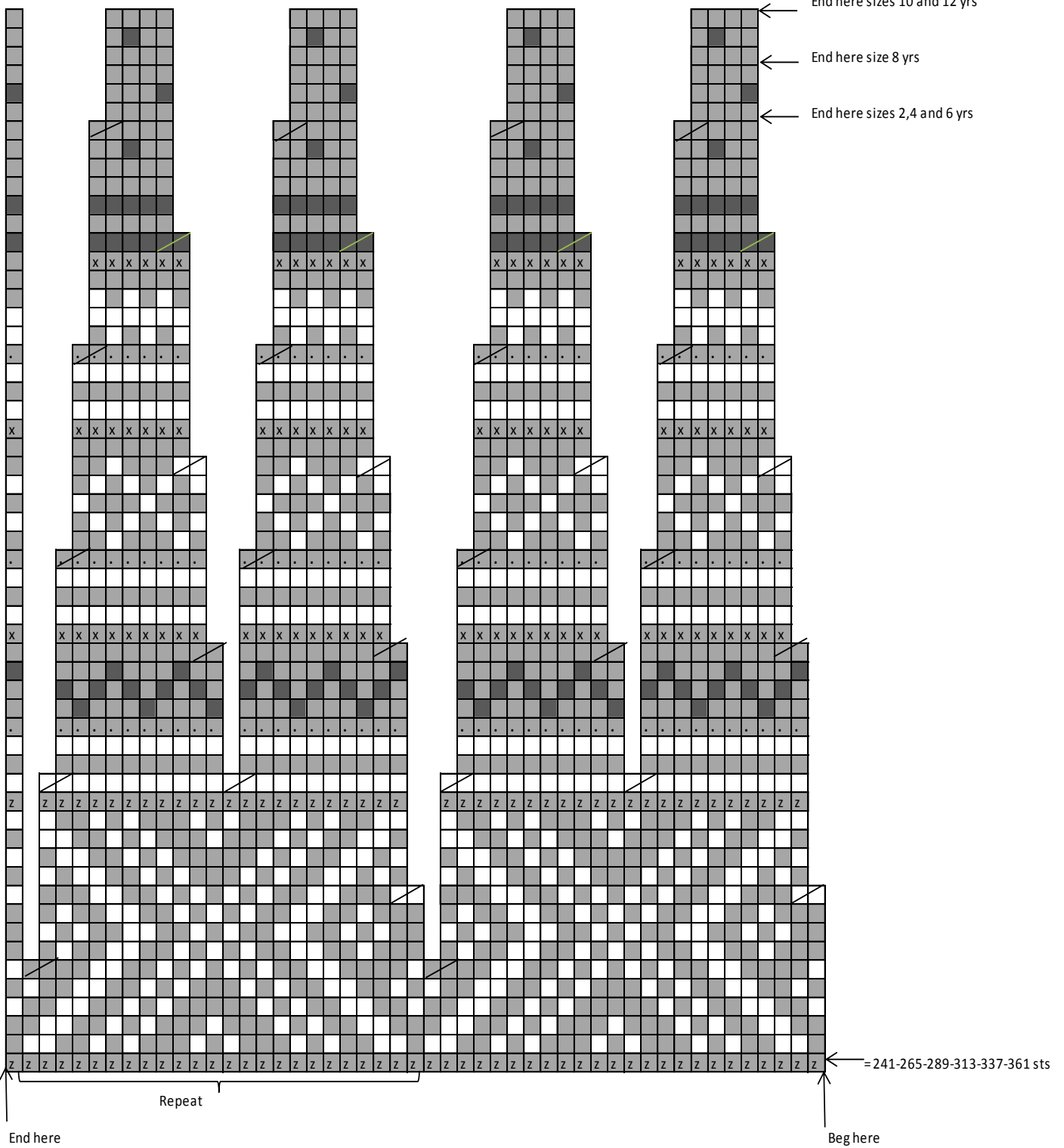
□ = White
 ■ = Charcoal

Pattern B



□ = White
 ■ = Charcoal
 ■ = Violet

PATTERN C



□ = White

■ = Charcoal

■ = Violet

▧ = K2tog

⊠ = Not worked for sizes 2 and 4 yrs

(Worked in basic clr for the other sizes)

⊠ = Work 2 times for sizes 8, 10 and 12 yrs

⊠ = Work 2 times only for size 12 yrs

Viking Alpaca Fine

Nanna sweater

1415-8

Size: 2- 4- 6- 8- 10- 12 yrs

Chest: 57- 63- 68- 74- 80- 85 cm
22.4-24.8-26.8-29.1-31.5-33.5 in

Length: 36- 40- 45- 50- 54- 58 cm
14.2-15.7-17.7-19.7-21.3-22.8 in

Sleeve length: 28- 31- 34- 38- 42- 45 cm
11-12.2-13.4-15-16.5-19.7 in

ALTERNATIVE YARNS: Viking Alpaca Fine (85% alpaca, 15% highland wool), Viking Baby Ull (100% merino wool, Superwash), 50 g ball

Light Grey, 613: 2-2-2-3-3-3 balls
Violet, 669: 1-1-2-2-2-2 balls
Pink, 665: 1-1-1-2-2-2 balls
Charcoal, 603: 1-1-1-1-1-1 ball
Grayish Blue, 626: 1-1-1-1-1-1 ball

Circular needle and double pointed needles size 2 ½ and 3mm – US 1 or 2 and 2 or 3 – UK/Canadian 13 or 12 and 11

Gauge: 28 sts = approx. 10 cm/4 in over St st using needles size 3 mm. **Check your gauge to ensure success.**

When working in patt with 2 clrs, it's important to maintain the order of yarns over your finger. Always hold the darker clr in front throughout the whole project.

Using needles size 2½ mm and light grey yarn, cast on 160 – 176 – 192 – 208 – 224 – 240 sts. Work in rnds approx. 4 – 4 – 4 – 5 – 5 – 6 cm/1.6-1.6-1.6-2-2-2.4 in in K1,P1 rib. Change to needles size 3 mm. Work in patt I as charted. Place markers at each side, 81 – 89 – 97 – 105 – 113 – 121 sts for front, and 79 – 87 – 95 – 103 – 111 – 119 sts for back. Rep patt I until work measures approx. 36 – 40 – 45 – 50 – 54 – 58 cm/14.2-15.7-17.7-19.7-21.3-22.8 in. Bind off.

Sleeves: Using needles size 2½ mm and light grey yarn, cast on 44 – 46 – 48 – 50 – 52 – 52 sts. Work in rnds approx. 4 – 4 – 4 – 4 – 5 – 5 cm/1.6-1.6-1.6-1.6-2-2 in in K1,P1 rib. Change to needles size 3 mm. Work 1 rnd in St st, and inc evenly across number of sts to be 47 – 49 – 51 – 53 – 55 – 57 sts. Place a marker beg of rnd (= mid under sleeve). Work in patt I as charted. Inc **same time** 1 st both sides of the markers approx. every 1 ½ cm/0.6 in until there is 79 – 85 – 89 – 95 – 101 – 105 sts on a rnd, and sleeve measures approx. 28 – 31 – 34 – 38 – 42 – 45 cm/11-12.2-13.4-15-16.5-17.7 in. Turn inside out, and work 6 cm/2.4 in in St st for seam allowance. Bind off rather loosely.

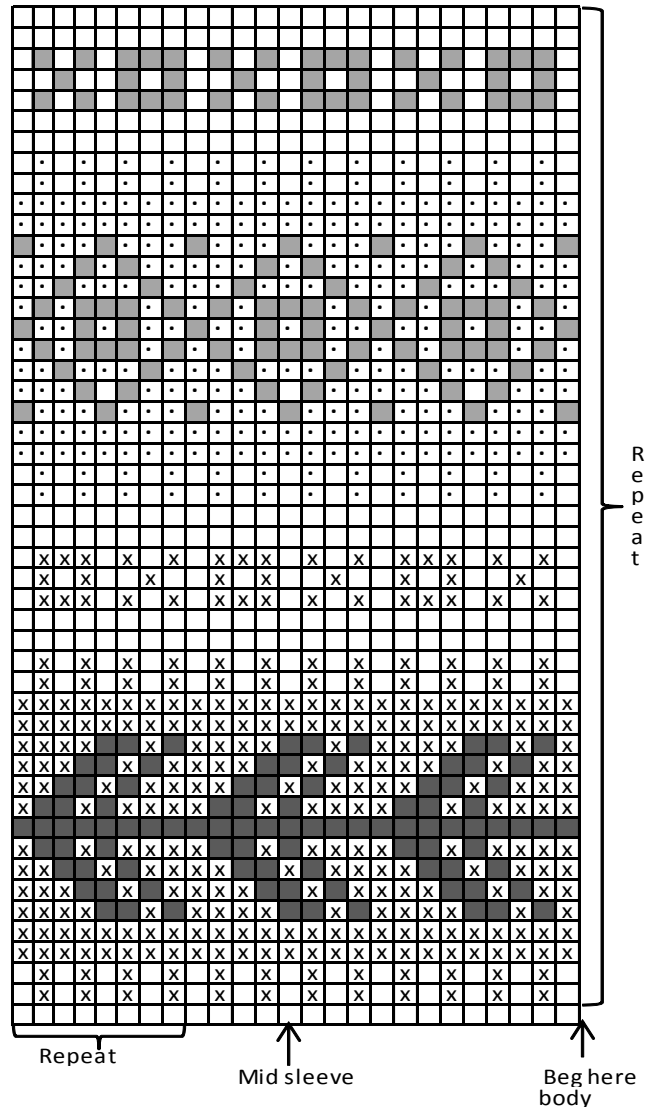
Finishing: Dampen work slightly from WS. Sew 2 dense zigzag seams around armholes. Cut open between seams. Sew normal zigzag to cut edges. Join shoulder seams.

Neckband: Sew a curving marker thread for front neck edge, approx. 4 – 5 – 5 – 5 – 6 – 6 cm/1.6-2-2-2-2.4-2.4 in below upper edge. Knit up with light grey yarn, approx. 57 – 61 – 63 – 63 – 65 – 65 sts along marked line (check that patt is same on each side of the neck edge), + sts from back = altog. 100 – 106 – 110 – 110 – 114 – 116 sts. Work 2 rnds in St st, and after that in K1,P1 rib until neckband measures approx. 6 – 6 – 6 – 7 – 7 – 7 cm/2.4-2.4-2.4-2.8-2.8 in. Bind off rather loosely in rib.

Sew 2 dense zigzag seams along the innerside of neck edge. Cut off all extras. Sew normal zigzag to cut edges. Fold neckband in double over cut edge, and sew on WS.

Sew on sleeves. Sew seam allowances over cut edges. Weave in all ends on WS.

Pattern I



- = light grey
- ⊗ = violet
- = charcoal
- ◻ = pink
- = grayish blue

Viking Alpaca Fine

Birk cardigan

1415-9

Size: 2- 4- 6- 8- 10- 12 yrs

Chest: 60- 66- 72- 77- 84- 90 cm
23.9-26-28.3-30.3-33.1-35.4 in

Length: 36- 40- 45- 50- 55- 60 cm
14.2-15.7-17.7-19.7-21.7-23.6 in

Sleeve length: 28- 31- 34- 38- 42- 46 cm
11-12.2-13.4-15-16.5-18.1 in

ALTERNATIVE YARNS: Viking Alpaca Fine (85% alpaca, 15% highland wool), Viking Baby Ull (100% merino wool, Superwash), 50 g ball

Green, 630: 3-3-4-4-5-5 balls
White, 600: 2-2-3-3-4-4 balls

Circular needle and double pointed needles size 2 ½ and 3 mm – US 1 or 2 and 2 or 3 – UK/Canadian 13 or 12 and 11
+ 6 – 6 – 7 – 7 – 7 – 8 buttons

Gauge: 28 sts = approx. 10 cm/4 in over St st using needles size 3 mm. **Check your gauge to ensure success.**

When working in patt with 2 clrs, it's important to maintain the order of yarns over your finger. Always hold the darker clr in front throughout the whole project.

Using needles size 2½ mm and green yarn, cast on 161 – 177 – 193 – 209 – 225 – 241 sts. Work back and forth approx. 4 – 4 – 5 – 5 – 5 – 6 cm/1.6-1.6-2-2-2.4 in in 1,P1 rib. Make a buttonhole on last row, to left edge for a boy, and to right edge for a girl. Make buttonhole inside 3 sts: Bind off 3 sts. Next row: Cast on 3 new sts over the bound-off sts. Slip first and last 8 – 8 – 8 – 8 – 10 – 10 sts on holders (= front band sts). Change to needles size 3 mm. Work 1 row in St st, and inc evenly across number of sts to be 161 – 177 – 193 – 209 – 225 – 241 sts (front bands not incl.). Cast on 4 new sts to the end of the row (= work without patt, sts to be cut open later on). Place markers at each side, 39 – 43 – 47 – 51 – 55 – 59 sts for each front, and 83 – 91 – 99 – 107 – 115 – 123 sts for back. Cont working in rnds. Work in patt I as charted until work measures approx. 36 – 40 – 45 – 50 – 55 – 60 cm/14.2-15.7-17.7-19.7-21.7-23.6 in. Bind off.

Sleeves: Using needles size 2½ mm and green yarn, cast on 44 – 46 – 48 – 50 – 52 – 52 sts. Work in rnds approx. 4 – 4 – 4 – 4 – 5 – 5 cm/1.6-1.6-1.6-1.6-2-2 in in K1,P1 rib. Change to needles size 3 mm. Work 1 rnd in St st, and inc evenly across number of sts to be 47 – 49 – 51 – 53 – 55 – 57 sts. Place a marker beg of rnd (= mid under sleeve). Work in patt I as charted, and inc **same time** 1 st both sides of the marker approx. every 1 ½ cm/0.6 in until there is 79 – 85 – 89 – 95 – 101 – 107 sts on a rnd, and sleeve measures approx. 28 – 31 – 34 – 38 – 42 – 46 cm/11-12.2-13.4-15-16.5-18.1 in. Turn inside out, and work 6 rnds in St st with green yarn for seam allowance. Bind off rather loosely.

Finishing: Dampen work slightly from WS. Sew 2 dense zigzag seams around armholes, and mid front. Cut open between seams. Sew normal zigzag to over cut edges. Join shoulder seams, 23 – 26 – 29 – 32 – 35 – 39 sts for each shoulder.

Front bands: Slip 8 – 8 – 8 – 8 – 10 – 10 sts without buttonhole from holder on needles size 2½ mm. Cast on 6 new sts to the edge facing the cardigan for seam allowance. Work in St st over the new sts, and rib over rest of the sts. Cont working until front band measures approx. 28 – 31 – 35 – 40 – 44 – 48 cm/11-12.2-13.8-15.7-17.3-18.9 in (it's important that front band is not too long). Bind off seam allowance sts, and leave rem sts on holder. Work same for the other front band, but make 6 – 6 – 7 – 7 – 7 –

8 buttonholes. First buttonhole is already there, make last one on last row before neck band, and rest evenly spaced apart.

Neck band: Sew a curving marker thread for front neck edge, approx. 4 – 5 – 5 – 5 – 6 – 6 cm/1.6-2-2-2.4-2.4 in below upper edge. Using needles size 2½ mm and green yarn, pick or knit up sts as foll: Beg from right front, slip front band sts on needles, pick or knit up 20 – 22 – 23 – 24 – 25 – 26 sts along marked line, 37 – 39 – 41 – 43 – 45 – 45 sts from back, 20 – 22 – 23 – 24 – 25 – 26 sts along marked line on the other side, and slip front band sts on needles. There is now 93 – 99 – 103 – 107 – 115 – 117 sts on a row. Work back and forth in K1,P1 rib. When rib measures approx. 2 – 2 – 2 ½ – 2 ½ – 3 – 3 cm/0.8-0.8-1-1-1.2-1.2 in, bind off first and last 8 – 8 – 8 – 8 – 10 – 10 rib sts. Cont working in rib with rem sts until neck band measures approx. 4 – 4 – 5 – 5 – 6 – 6 cm/1.6-1.6-2-2-2.4-2.4 in. Bind off in rib. Sew a dense zigzag seam inside neck band. Cut off all extras. Sew normal zigzag over cut edges.

Finishing: Sew on front bands. Sew seam allowances over cut edges. Fold neck band in double over cut edge, and sew on WS. Sew on sleeves. Sew on seam allowances over cut edges. Sew on buttons. Weave in all ends on WS.

Pattern I

