

# Viking Bjørk

## Shawl/Poncho

1408-1

Size: Woman

ALTERNATIVE YARN: Viking Bjørk (90 % cotton, 10% merino wool), Viking Alpaca Silk ( 50% alpaca, 50 % silk), 50 g ball

Beige, 507: 12 balls

Circular needle or pair of knitting needle size 3 mm – US 2 or 3 – US/Canadian 11  
+ 6 buttons

**Gauge:** 25 sts = approx. 10 cm/4 in over St st using needles size 3 mm. **Check your gauge to ensure success.**

### Seed st

1<sup>st</sup> row: K1, P1

2<sup>nd</sup> row: Knit all purl-sts, and purl all knit-sts

Rep 2<sup>nd</sup> row.

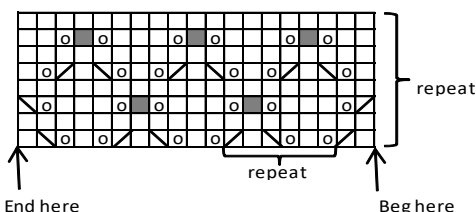
### Work all pieces separately.

Using needles size 3 mm, cast on 99 sts. Work back and forth 8 rows in Seed st.

Cont working in patt as foll: Work in Seed st over 6 sts (= sides) – P1 – work in patt over next 85 sts – P1 – Seed st over 6 sts. Cont working as established until work measures approx. 145 cm/64.9 in. Work 6 rows in Seed st. Bind off.

Work same for another piece.

Crochet 3 buttonhole loops (= ch6) both front and back, (fasten them with sl st). Make first buttonhole approx. 25 cm/9.8 in below shoulder, and rest 2 approx. 10 cm/4 in spaced apart. Work same for back. Sew on buttons.



□ = knit (knit on RS, purl on WS)

■ = sl 1 st, K2tog, pssso

□ = 1 yo

▤ = K2tog

▥ = sl 1 st, K1, pssso

# Viking Bjørk

## Cardigan

1408-2

Size: S M L

Bust: 96 108 116 cm

38.8 42.6 45.8 in

Length: 65 70 70 cm

25.6 27.6 27.6 in

Sleeve length: 48 50 51 cm

18.9 19.7 20.1 in

ALTERNATIVE YARN: Viking Bjørk (90 % cotton, 10% merino wool), Viking Alpaca Silk ( 50% alpaca, 50 % silk), 50 g ball

White, 500 7 7 8 balls  
Black, 503 6 6 7 balls

Circular needle and double pointed needles size 2 ½ and 3 mm – US 1 or 2 and 2 or 3 – UK/Canadian 13 or 12 and 11

**Gauge:** 25 sts = approx. 10 cm/4 in over St st using needles size 3 mm. **Check your gauge to ensure success.**

Using needles size 2½ mm and white yarn, cast on 249-279-299 sts. Work back and forth in K1,P1 rib. When work measures 5 cm/2 in, slip first and last 9 sts on holder (= sts for front bands). There is now 231-261-281 sts on a row. Change to needles size 3 m. Knit 1 row, and cast on 4 sts to the end of the row. Purl these new sts every rnd (= mid front, will be cut open). Place markers each side, 56-63-68 sts for both fronts (+ purl-sts mid front), and 119-135-145 sts for back. Cont working in rnds in patt I as charted. Cont working until work measures the given length, or as desired. End with complete patt.

### Sleeves

Using needles size 2½ mm and white yarn, cast on 54-60-62 sts. Work in rnds approx. 5 cm/2 in in K1,P1 rib. Change to needles size 3 mm. Work 1 rnd in St st, and inc evenly across number of sts to be 63-69-71 sts. Place a marker mid under sleeve = beg of rnd. Work in patt I, check from mid st where to beg. Inc same time 1 st both sides of the marker approx. every 1 ½ cm/0.6 in until there is 115-127-131 sts on a rnd. Cont working until sleeve measures the given length, or as desired. End with complete patt. Knit 1 rnd with white yarn. Turn work inside out. Work 5 rnds in St st for seam allowance. Bind off rather loosely.

### Finishing

Sew 2 dense zigzag seams around armholes (measure width from sleeve top), and mid front. Cut open between seams. Sew normal zigzag over cut edges. Join shoulder seams, 38-45-49 sts for each shoulder.

### Front bands

Slip 9 sts from holder over needles size 2 ½ mm. Cast on 4 new sts to the edge facing body (= seam allowance). Work St st over the seam allowance sts. Cont working in rib until front band measures approx. 5-6-6 cm/2-2.4-2.4 in less than total length (it's important that front and doesn't turn

out too long). Bind off seam allowance sts, and leave rem sts on holder.

Work same for other front band, with seam allowance on the opposite side.

### Neck band

Sew a curving marker thread for neck edge each side of mid front, approx. 5-6-6 cm/2-2.4-2.4 in below upper edge. Using needles size 2½ mm and white yarn, pick or knit up sts along neck edge. Beg from RS, right front edge. Slip sts from holder over needles, pick up approx. 27-29-31 sts along marked line, 43-45-47 sts from back, 27-29-31 sts along marked line on left front, and slip front band sts on needles. There is now approx. 115-121-127 sts on a row. Work back and forth in K1,P1 rib.

When rib measures 3 ½ cm/1.4 in, bind off first and last 9 sts in rib. Cont working until neck band measures approx. 7 cm. Bind off in rib.

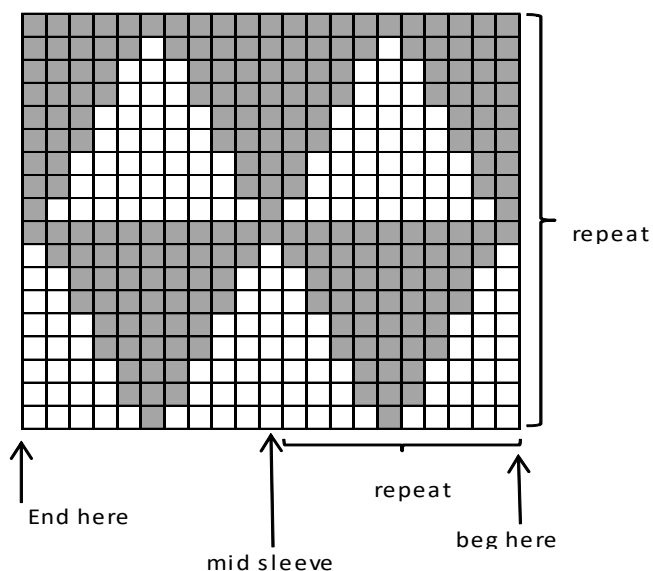
Sew a dense zigzag seam on the innerside of neck edge. Cut off all extras. Sew normal zigzag over cut edges.

### Finishing

Sew on front bands. Sew seam allowances over cut edges. Fold neck band in double over cut edge, and sew on WS.

Sew on sleeves. Sew seam allowances over cut edges. Weave in all ends on WS.

PATTERN I



- = white
- = black

## Viking Bjørk/ Chicago

### Tunic/Dress

1408-3

Size:	S	M	L
Waist:	77	86	96 cm
	30.3	33.9	38.8 in
Length:	86	86	86 cm
	33.9	33.9	33.9 in

**ALTERNATIVE YARN:** Viking Bjørk (90 % cotton, 10% merino wool), Viking Alpaca Silk ( 50% alpaca, 50 % silk), 50 g ball

### Bjørk

Off-White, 502                      10              10                      11 balls

### Chicago

Gold, 384                              1                      1                              1 ball

Circular needle size 3 mm – US 2 or 3 – US/Canadian 11

### Gauge:

**Bjørk:** 25 sts = approx. 10 cm/4 in over St st using needles size 3 mm.

**Chicago:** 25 sts = approx. 10 cm/4 in over Garter st using needles size 3 mm. **Check your gauge to ensure success.**

Using needles size 3 mm and off-white yarn, cast on 240-264-288 sts. Work in rnds in patt I as charted.

Cont working in St st. Place markers each side = 120-132-144 sts both front and back. When work measures approx. 10 cm/4 in, dec 1 st both sides of the markers = 4 sts. Rep dec every 4 cm/1.6 in 12 times = 192-216-240 sts on a rnd. Cont working until work measures 54 cm/21.3 in (same for all sizes). Inc 1 st both sides of the markers: work until 1 st rem before a marker, M1, K2, M1. Rep inc every 1½ cm/0.6 cm 6 times = 216-240-264 sts. Cont working until work measures 63 cm (same for all sizes), or desired length before armholes. Divide work at sides. Finish back and front separately.

### Back:

Cont working back and forth in St st. Cast on at each edge every 2<sup>nd</sup> row 1x4 sts, 4x2 sts, 4x3 sts, and 1x26 sts = 208-220-232 sts. Cont working in St st until work measures 85 cm/33.5 in. Change to Chicago. Beg from RS, and work 4 rows in Garter st. Knit 1 row. Bind off on WS row.

### Front:

Work same as for back.

### Finishing:

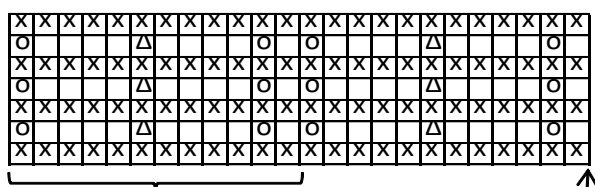
Sew shoulder and sleeve seams, leaving mid 26-28-30 cm/10.2-11-11.8 in for neck edge. Sew inner seams of the sleeves.

Weave in all ends on WS.

### Sleeve border:

Using needles size 3 mm and off-white yarn, knit or pick up 132 sts (same for all sizes). Knit 1 rnd. Cont working in patt 1 as charted. Bind off knitwise.

### Pattern I



- = knit
- = purl
- = 1 yo
- = sl 1 st, K2tog, pss0

## Viking Bjørk

### Cardigan

1408-4A

Size:	XS	S	M	L	XL	XXL
<b>Bust:</b>	88	96	104	112	120	128 cm
	34.6	38.8	41.2	44.1	47.2	50.6 in
<b>Length:</b>	74	76	78	78	80	80 cm
	29.1	29.9	30.7	30.7	31.5	31.5 in
<b>Sleeve length:</b>	48	49	50	50	51	51 cm
	18.9	19.3	19.7	19.7	20.1	20.1 in

**ALTERNATIVE YARN:** Viking Bjørk (90% cotton, 10% merino wool), Viking Alpaca Silk (50% alpaca, 50% silk), 50 g ball

White, 500 10 10 11 11 12 13 balls  
 Black, 503 1 1 1 2 2 2 balls

Circular needle and double pointed needles size 2 ½ and 3 mm – US 1 or 2 and 2 or 3 – UK/Canadian 13 or 12 and 11

**Gauge:** 25 sts = approx. 10 cm/4 in over St st using needles size 3 mm. **Check your gauge to ensure success.**

Using needles size 2½ mm and white yarn, cast on 252-276-300-324-348-372 sts. Work back and forth 6 cm/2.4 in in K4,P4 rib, ending with K4. Change to needles size 3 mm. Beg from RS, and work rib over first and last 24-24-32-32-40-40 sts (= front bands). Cont working St st over rem sts, and inc evenly across them 6-4-2-4-2-0 sts. Cont working as established. When work measures 51-52-53-53-53-53 cm/20.1-20.5-20.9-20.9-20.9-20.9 in, or desired length before armholes, place markers each side, 74-80-86-94-100-106 sts for both fronts, and 110-120-130-140-150-160 sts for back. Finish back and fronts separately.

### Back:

Bind off 2 sts at each edge for armholes. Cont working back and forth in St st. When work measures the given length, or as desired, and armhole measures 23-24-25-26-27-27 cm/9.1-9.8-9.8-10.2-10.6-10.6 in, bind off.

### Right front:

Cont working same as before, but bind off 2 sts for armhole

on 2<sup>nd</sup> row. When front measures same as back, bind off, knit-sts knitwise and purl-sts purlwise.

### Left front

Work same as for right front, but in reverse.

### Sleeves

Using needles size 2½ mm and black yarn, cast on 48-48-56-56-56-64 sts. Work 6 cm/2.4 in rib same as for body. Change to needles size 3 mm. Knit 1 rnd, and inc evenly across number of sts to be 55-59-59-63-63-67 sts. Place a marker mid under sleeve = beg of rnd. Work in patt I as charted, check from mid st where to beg. Inc same time 1 st both sides of the marker approx. 1 cm/0.4 in (same for all sizes). Cont working in patt until work measures approx. 22-23-24-24-25-25 cm/8.7-9.1-9.4-9.4-9.8-9.8 in, end with black rnd. Change to white yarn, and work in St st until sleeve measures the given length, or as desired, and there is 117-121-125-129-133-137 sts on a rnd. Bind off.

### Finishing

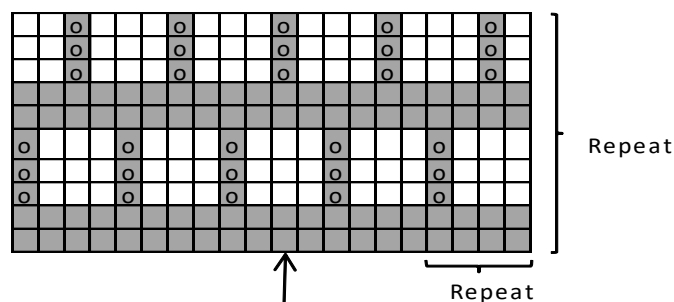
Join shoulder seams, 34-39-43-47-51-56 sts for each shoulder. Sew on sleeves.

### Pockets

Using needles size 3 mm and white yarn, cast on 36 sts. Work back and forth 12 cm/4.7 in in St st. Work first 7 rows in patt 1 (beg from RS), **but** dec 1 st on 1<sup>st</sup> row so that patt will be same at each edge. Bind off.

Sew pockets approx. 2 cm/0.8 over ribbed edge, and 3 cm/1.2 in from fronts. Weave in all ends on WS.

### PATTERN I



- = white
- = black
- = black, sl 1 st

# Viking Bjørk

## Tunic

1408-4B

Size:	XS	S	M	L	XL	XXL
<b>Bust:</b>	85	90	96	102	110	118 cm
	33.5	35.4	38.8	40.2	43.3	46.4 in
<b>Length:</b>	74	76	78	79	80	81 cm
	29.1	29.9	30.7	31.1	31.5	31.9 in

**ALTERNATIVE YARN:** Viking Bjørk (90% cotton, 10% merino wool), Viking Alpaca Silk (50% alpaca, 50% silk), 50 g ball

White, 500 5 5 6 6 7 7 balls  
 Black, 503 2 2 2 2 2 2 balls

Circular needle size 2 ½ and 3 – US 1 or 2 and 2 or 3 – UK/Canadian 13 or 12 and 11

**Gauge:** 25 sts = approx. 10 cm/4 in over St st using needles size 3 mm. **Check your gauge to ensure success.**

Using needles size 2½ mm and black yarn, cast on 224-240-256-272-296-320 sts. Work in rnds 6 cm/2.4 in in K4,P4 rib. Change to needles size 3 mm. Cont working in patt I as charted until work measures approx. 23 cm/9.1 in. End with 2 black rnds. Place markers each side, 112-120-128-136-148-160 sts for both back and front. Change to white yarn, and cont working in St st. Dec same time 1 st both sides of the markers approx. every 8-7-7-7-6-5 cm/3.1-2.8-2.8-2.8-2.4-2 in until 212-224-240-256-276-296 sts rem on a rnd. When work measures 54-55-56-56-56-56 cm/21.3-21.7-22-22-22-22 in, bind off 12 sts at each side = 6 sts both sides of the markers. Finish back and front separately.

### Back:

Cont working back and forth in St st. Bind off at each edge every 2<sup>nd</sup> row 1x3 sts, 1x2 sts, and 1x1st. Cont working until sleeve measures the given length, and armhole measures 20-21-22-23-24-25 cm/7.9-8.3-8.7-9.1-9.4-9.8 in. Bind off.

### Front:

Work same as for back. When work measures 7-7-7-8-8-8 cm/2.4-2.4-2.4-3.1-3.1 in less than total length, bind off mid 24-26-28-28-30-32 sts for neck edge. Finish both sides separately.

Cont working back and forth in St st. Bind off at neck edge every 2<sup>nd</sup> row 1x4 sts, 1x3 sts, 1x2 sts, and 1x1 st. When front measures same as back, bind off.

Work same for the other side, rev all shaping.

### Finishing

Join shoulder seams.

**Neck band:** Using needles size 3 mm and black yarn, pick or knit up approx. 104-104-108-112-116-120 sts (multiple with 4). Work 7 rnds in patt 1. Cont working with black yarn, purl 1 rnd (= folding edge) + knit 7 rnds. Bind off rather loosely.

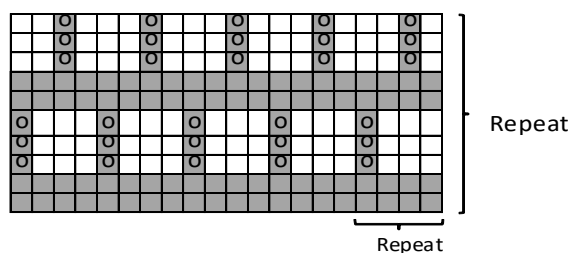
Fold neck band in double, and sew on WS.

**Armhole bands**

Beg mid under arm. Using needles size 2½ mm and white yarn, pick or knit up approx. 112-112-112-120-120-128 sts (number of sts must be multiple with 8). Work in rnds 3 cm/1.2 in in K4,P4 rib. Bind off in rib.

Weave in all ends on WS.

### PATTERN I



- = white
- = black
- ⊙ = sl black st from prev rnd altog on 3 rnds worked with white yarn

# Viking Bjørk

## Top

1408-5

Size:	S	M	L	XL
<b>Bust:</b>	88	96	104	112 cm
	34.6	38.8	41	44.1 in
<b>Length:</b>	64	65	66	67 cm
	25.2	25.6	26	26.4 in

**ALTERNATIVE YARNS:** Viking Bjørk (90% cotton, 10% merino wool), Viking Alpaca Silk (50% alpaca, 50% silk), 50 g ball

White, 500 : 5 6 6 7 balls

Circular needle and double pointed needles size 2 ½ and 3 mm – US 1 or 2 and 2 or 3 – UK/Canadian 13 or 12 and 11

**Gauge:** 25 sts = approx. 10 cm/4 in over St st using needles size 3 mm. **Check your gauge to ensure success.**

Using needles size 2 ½ mm, cast on 440 – 480 – 520 – 560 sts. Work in rnds in Garter st. After 6 rnds, work as foll: \*K8 – K2tog\*, rep \*-\* across the rnd. Rep dec every 6<sup>th</sup> rnd (always dec on knit-rnd), with 1 st less between dec until 220 – 240 – 260 – 280 sts rem on a rnd. Work in Garter st until you have completed altog. 18 rills. Place markers each side, 110 – 120 – 130 – 140 sts for both back and front. Change to needles size 3mm. Cont working in St st. When work measures 40cm/15.7 in (same for all sizes), bind off 16 sts at each side (8 sts both sides of the markers). Cast on 74 – 80 – 86 – 92 sts over the bound-off sts over both armholes. There is now 336 – 368 – 400 – 432 sts on a rnd. Change to needles size 2 ½ mm. Cont working in Garter st.

After 1 cm/0.4 in, beg dec for yoke: \*K14 – K2tog\*, rep \*-\* across the rnd. Rep dec every 1 ½ – 1 ½ – 1 ½ – 1 ½ cm/0.6-0.6-0.6-0.6 in, with 1 st less each time until 210 – 230 – 225 -216 sts rem on a rnd, and Garter st yoke measures approx. 10 – 10 – 12 – 13 cm/4-4-4.7-5.1 in. Bind off.

Weave in all ends on WS.

## Viking Bjørk

### Cardigan

1408-6

Size:	XS	S	M	L	XL	XXL
<b>Bust:</b>	89	96	104	111	118	125 cm
	35	38.8	41	43.7	46.4	49.2 in
<b>Length:</b>	58	60	61	62	63	64 cm
	22.8	23.6	24	24.4	24.8	25.2 in
<b>Sleeve length:</b>	47	48	49	50	51	51 cm
	18.5	18.9	19.3	19.7	20.1	20.1 in

**ALTERNATIVE YARNS: Viking Bjørk (90% cotton, 10% merino wool), Viking Alpaca Silk (50% alpaca, 50% silk), 50 g ball**

Navy Blue, 526 : 8 – 9 – 10 – 10 – 11 – 11 balls

Circular needle and double pointed needles size 2 ½ and 3 mm – US 1 or 2 and 2 or 3 – UK/Canadian 13 or 12 and 11 + 1 zipper, approx. 55 cm/21.7 in long

**Gauge:** 25 sts = approx. 10 cm/4 in over St st using needles size 3 mm. **Check your gauge to ensure success.**

#### Bubble pattern:

Rows 1-5: St st (first row = purl, WS).

Row 6 (always RS): St st over 2 sts, \*count 5 sts downwards, insert tip of RS needle into the st, knit this st, and let 4 sts unravel (= loosen up the sts) = drop st, K5\*, rep \*-\* across the row, end with St st over 2 sts.

Rows 7-11: St st.

Row 12 (always RS): St st over 5 sts, \*count 5 sts downwards, insert tip of RS needle into the st, knit this st, and let 4 sts unravel, K5\*, rep \*-\*.

Rep these 12 rows.

Using needles size 3 mm, cast on 223 – 241 – 259 – 277 – 295 – 313 sts. Work back and forth 3 rills (= Garter st). Change to needles size 3 mm, and work as foll: Garter st over 4 sts (= right front band), Bubble patt over 215 – 233 – 251 – 269 – 287 – 305 sts, end with Garter st over 4 sts (= left front band). Place markers each side, 56 – 61 – 65 – 70 – 74 – 79 sts for both fronts, and 111 – 119 – 129 – 137 – 147 – 155 sts for back. When work measures approx. 39 – 40 – 40 – 40 – 41 cm/15.4-15.7-15.7-15.7-15.7-16.1 in, bind off 10 sts at each side for armholes (5 sts both sides of the markers). Finish back and fronts separately.

**Back:** Cont working in patt. Bind off at each edge every 2<sup>nd</sup> row 1x3 sts, 2x2 sts, and 1x1 st. When work measures approx. 56 – 58 – 59 – 60 – 61 – 62 cm/22-22.8-23.2-23.6-24-24.4 in, slip 21 – 21 – 21 – 21 – 23 – 25 mid sts on holder for neck edge. Finish each side separately. Bind off

at neck edge every 2<sup>nd</sup> row 1x 5 – 6 – 6 – 6 – 6 – 6 sts, 1x5 – 5 – 6 – 6 – 6 – 6 sts. When work measures 40 – 42 – 44 – 46 cm/15.7-16.5-17.3-18.1 in. Bind off.

**Front:** Work same as for back. When work measures approx. 52 – 54 – 55 – 55 – 56 – 57 cm/20.5-21.3-21.7-21.7-22-22.4 in, slip first 13 – 13 – 13 – 14 – 14 – 14 sts on holder for neck edge (incl front bands). Bind off at neck edge every 2<sup>nd</sup> row 0 – 1 – 1 – 1 – 1 – 1x3 sts, 3 – 2 – 2 – 2 – 2 – 3x2 sts, and 2 – 3 – 3 – 3 – 3 – 3x1 st. When front measures same as back, bind off.

Work same for other front, rev all shaping.

**Sleeves:** Using needles size 2 ½ mm, cast on 51 – 53 – 55 – 57 – 59 – 61 sts. Work in rnds 3 rills (= Garter st). Change to needles size 3 mm. Cont working in rnds in Bubble patt. Place a marker beg of rnd = mid under sleeve. Inc 1 st both sides of the marker approx. every 3 ½ – 3 – 3 – 2 ½ – 2 ½ – 2 cm/1.4-1.2-1.2-1-1-0.8 in until there is 85-89-95-99-105-109 sts on rnd, and sleeve measures approx. 47-48-49-50-51-51 cm/18.5-18.9-19.3-19.7-20.1-20.1 in. Bind off 10 – 10 – 10 – 10 – 10 sts mid under sleeve (5 – 5 – 5 – 5 – 5 – 5 sts both sides of the marker). Cont working back and forth in Bubble patt, and bind off at each edge for sleeve top every 2<sup>nd</sup> row 1x3 sts, 2x2 sts, and 17-19-21-23-25-27x1 st. When sleeve top measures approx. 14-15-16-17-18-19 cm/5.5-5.9-6.3-6.7-7.1-7.5 in, bind off at each edge every 2<sup>nd</sup> row 1x3 sts, and 1x6 sts. Bind off rem 9-9-11-11-13-13 sts.

**Finishing:** Sew shoulder seams. Sew on sleeves (beg with marking mid shoulder and sleeve top).

**Neck band:** Beg from right front. Using needles size 2½ mm, pick or knit up approx. 102 – 108 – 112 – 116 – 118 – 120 sts around neck edge. Work 3 rills. Bind off.

Sew on zipper.

## Viking Bjørk

### Sweater

1408-7

Size:	S/M	L/XL
<b>Bust:</b>	95	109 cm
	37.4	42.9 in
<b>Length:</b>	75	76 cm
	29.5	29.9 in
<b>Sleeve length:</b>	34	35 cm
	13.4	13.8 in

**ALTERNATIVE YARN: Viking Bjørk (90% cotton – 10% merino wool), 50 g ball**

Beige, 507 10 11 balls

Circular needle and double pointed needles size 3 mm – US 2 or 3 – UK/Canadian 13 or 12 and 11

**Gauge:** 25 sts = approx. 10 cm/4 in over St st using needles size 3 mm. **Check your gauge to ensure success.**

#### SWEATER

Using needles size 3 mm, cast on 284-318 sts. Work in rnds 3 rills (= Garter st). Place markers each side, 143-159 sts for front, and 141-159 sts for back. Place markers round

both mid front and back sts. Beg mid back, and count 11 sts from mid back marker = beg of rnd. Work in patt II, and in patt I. Work in rnds as foll: Mid panels both front and back (= patt II) dec as charted. When patt II is ready, there is 238-272 sts on a rnd. When work measures approx. 54-54 cm/21.3 – 21.3 in, bind off 12 sts at each side for armholes (6 sts both sides of the markers). Finish back and front separately.

**Back**

Cont working back and forth in patt I. Check at both edges that there is same number of yo and dec (= K2tog), possible extra sts are worked in St st/Garter st. When work measures approx. 75-76 cm/13.4-13.8 in, bind off.

**Front**

Work same as for back. When work measures approx. 64-65 cm/25.2-25.6 in, bind off 35-37 mid sts. Finish each side separately. Bind off at neck edge every 2<sup>nd</sup> row 1x3sts, 1x2 sts, and 1x1 st. When work measures same as back, bind off. Work same for the other side, rev all shaping.

**SLEEVES**

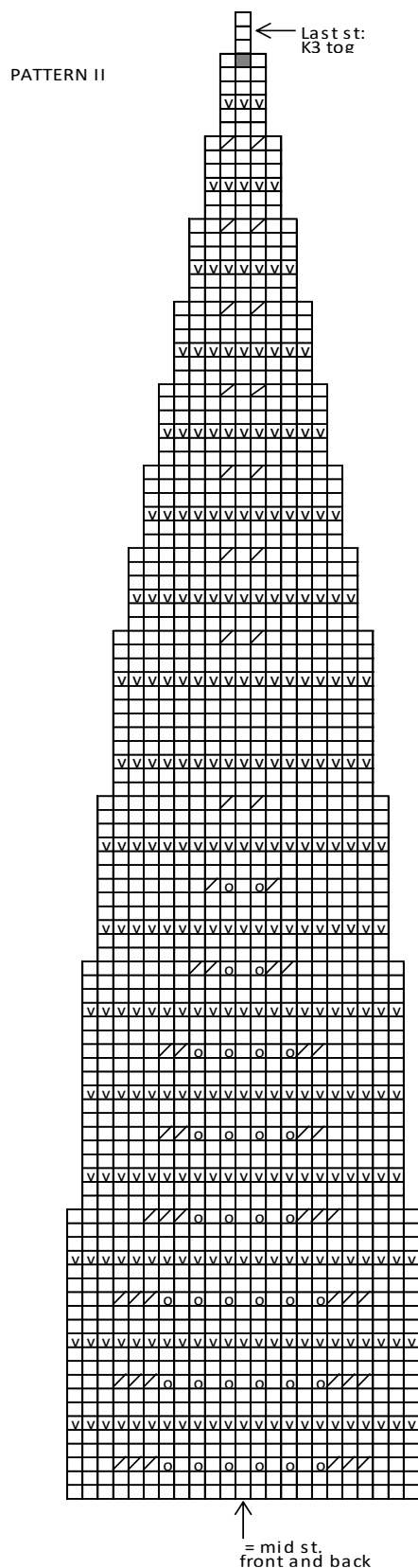
Using needles size 3 mm, cast on 85-85 sts. Work in rnds 3 rills (= Garter st). Place a marker beg of rnd = mid under sleeve. Cont working in rnds in patt I as charted. Inc same time 1 st both sides of the marker approx. every 3-2 1/2 cm/1.2 -1 in until there is altog. 105-109 sts on a rnd. When work measures 34-35 cm/13.4-13.8 in, bind off. Work same for the other sleeve.

**Finishing**

Sew shoulder seams.

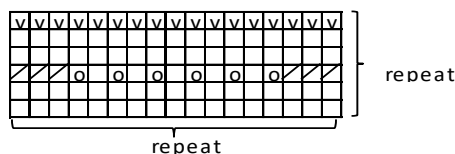
**Neck band:** Using needles size 3 mm, pick or knit up approx. 144-148 sts around neck edge. Work in rnds 2 rills (= Garter st). Next rnd: K2tog – 1 yo across the rnd + 2 rills. Bind off.

Sew on sleeves. Weave in all ends on WS.



- = knit (knit on RS. purl on WS)
- ▣ = purl (purl on RS. knit on WS)
- = 1 yo
- ▧ = K2tog
- = sl 1 st.K2tog. osso

**PATTERN I**



# Viking Bjørk

## Cardigan

1408-8

Size:	XS	S	M	L	XL	XXL
<b>Bust:</b>	85	90	95	102	110	118 cm
	33.5	35.4	37.4	40.4	43.3	46.1 in
<b>Length:</b>	58	60	60	62	62	63 cm
	22.8	23.6	23.6	24.4	24.4	24.8 in
<b>Sleeve length:</b>	48	49	50	51	51	52 cm
	18.9	19.3	19.7	20.1	20.1	20.5 in

**ALTERNATIVE YARNS: Viking Bjørk (90% cotton, 10% merino wool), Viking Alpaca Silk (50% alpaca, 50% silk), 50 g ball**

Off-White, 502 12 12 13 14 15 16 balls

Circular needle and double pointed needles size 4 and 4 ½ mm – US 6 and 7 – UK/Canadian 8 and 7 + zipper, approx. 60-65 cm/23.6-25.6 in (measure from finished garment).

**Gauge:** 18 sts = 10 cm/4 in over St st with double yarn using needles size 4½ mm. **Check your gauge to ensure success.**

### CARDIGAN

Using needles size 4 ½ mm and double off-white yarn, cast on 160-172-184-196-208-220 sts. Place markers each side, 80-86-92-98-104-110 sts for back, and 40-43-46-49-52-55 sts for both fronts. Cont working back and forth in patt and St st as foll: Beg from RS. Work patt II over 12 sts – patt I over next 136-148-160-172-184-196 sts (end with 4 sts in lace patt) – patt II over 12 sts. Cont working as established until work measures approx. 6 cm/2.4 in. Cont working in cable patt same as before, **but** work St st and lace patt over rem sts as foll: Beg from cable on right front, work St st over 16-16-22-22-28-28 sts – lace patt over next 8 sts – St st over 4-7-4-7-4-7 sts = right front. Back: Work St st over all sts. Work left front same as right front, but in reverse. When work measures approx. 38-39-38-39-38-38 cm/15-15.4-15-15.4-15-15 in, bind off at each side 8-14-8-14-8-14 sts (4-7-4-7-4-7 both sides of the markers). Leave work aside, and knit the sleeves.

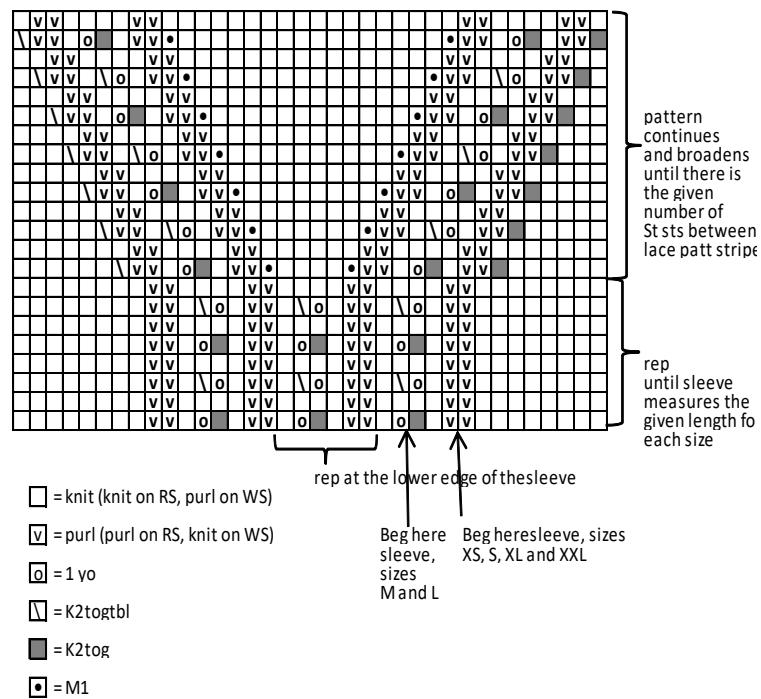
### Sleeves

Using needles size 4 ½ mm and double off-white yarn, cast on 42-42-48-48-54-54 sts. Cont working in rnds. Work approx. 6 cm/2.4 in in lace patt same as for body, **but** beg where arrow points out in patt II. Place a marker beg of rnd = mid under sleeve. Work in St st both sides of 20 mid sts (cont working in patt over mid sts). Inc 1 st both sides of the marker approx. every 2 ½ cm/1 in (same for all sizes) until work measures approx. 30-30-30-31-31-32 cm/11.8-11.8-11.8-12.2-12.2-12.6 in. Cont working as charted until there is 30-30-34-38-42-44 sts worked in St st between lace patt stripes. After that, cont working as established until sleeve measures 48-49-50-51-51-52 cm/18.9-19.3-19.7-20.1-20.1-2.5 in (or desired length), and there is 72-76-80-82-86-90 sts on a rnd. Bind off 8-14-8-14-8-14 sts mid under sleeve (4-7-4-7-4-7 sts both sides of the marker). Leave work aside, and knit the other sleeve.

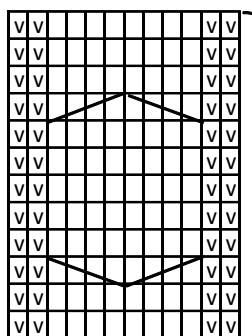
**Yoke:** Slip all pieces on same circular needle = 272-268-312-304-348-344 sts. Cont working back and forth in patt same as before, **but** beg raglan-dec: K2tog **before** first lace patt stripe (body) – lace patt – St st over 9-8-11-7-10-8 sts – lace patt over 8 sts – K2togtbl – work in St st until next lace patt stripe, and K2tog before it – lace patt over 8 sts – St st over 9-8-11-7-10-8 sts – place a marker - K2tog (= beg of back) – St st over 68-68-80-80-92-92 sts – K2togtbl – place a marker – St st over 9-8-11-7-10-8 sts + lace patt – K2togtbl – work until next lace patt stripe, and K2tog before it. Work until next lace patt, and K2togtbl after it. (= altog. 8 sts decreased on a row). Work until the end of the row. Cont working as established, and rep dec every 2<sup>nd</sup> row until 2 St st rem between lace patt on both sleeves. Rep dec on sleeves only before lace patt of 18 sts (= K2tog), and after lace patt of 18 sts (= K2togtbl). Rep dec until 112-122-136-144-148-160 sts rem. Knit 1 row over all sts, and dec evenly across number of sts to be 102-110-126-134-138-150 sts. **Note!** Adjust dec so that you can cont working in K2,P2 rib for neck band. Change to needles size 4 mm, and work in K2,P2 rib until neck band measures approx. 4 cm/1.6 in. Bind off, and ptog same time all purl-sts.

Sew on zipper.

PATTERN III FOR SLEEVE

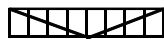
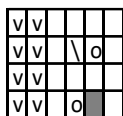


PATTERN II over 12 sts



repeat

PATTERN I



=slip 2 sts on cn, and hold back, K2, knit sts from cn. Slip 2 sts on cn, and hold back, K2, knit sts from cn



=slip 2 sts on cn, and hold to front, K2, knit sts from cn. Slip 2 sts on cn, and hold to back, K2, knit sts from cn

# Viking Bjørk

Poncho/Top

1407-9

Size:	S/M	L/XL	XXL
<b>Bust:</b>	100	110	120 cm
	39.4	43.3	47.2 in
<b>Length:</b>	69	70	70 cm
	27.2	27.6	27.6 in

**ALTERNATIVE YARN:** Viking Bjørk (90% cotton, 10% merino wool), Viking Alpaca Silk (50% alpaca, 50% silk), 50 g ball

Off-White, 502	8	9	10 balls
Beige, 507	5	5	6 balls
Light Grey, 513	4	4	6 balls

Circular needle and double pointed needles size 5 mm – US 8 – UK/Canadian 6

**Gauge:** 16 sts = approx. 10 cm/4 in over St st with double yarn using needles size 5 mm. **Check your gauge to ensure success.**

**STRIPES!** Poncho is worked with double yarn as foll:  
 \*4 rows with 1 strand of beige and 1 strand of off-white  
 – 2 rows with 1 strand of light grey and 1 strand of off-white\*, rep \*-\* throughout the work

## BACK

Using needles size 5 mm and double yarn (1 strand off-white – 1 strand beige), cast on 135-143-151 sts. Work in patt I as charted over 28 first sts, after that rep patt over next 80-88-96 sts (see chart), and end with patt II (= 27 sts). Cont working back and forth with patt and stripes med striper until work measures approx. 16 cm/6.3 in. Cont as foll: Patt I over 28 sts – St st over 79-87-95 sts – P1 – patt II over 27 sts. Rep stripes and St st/patt same as before until work measures approx. 69-70-70 cm/27.2-27.6-27.6 in. Bind off.

## FRONT

Work same as for front. When work measures approx. 59-60-60 cm/23.2-23.6-23.6 in, bind off mid 23 sts. Finish each side separately. Bind off at neck edge every 2<sup>nd</sup> row 1x3 sts, 2x2 sts, and 2x1 st = 47-51-55sts rem for shoulder. When work measures same as back, bind off. Work same for the other side, rev all shaping.

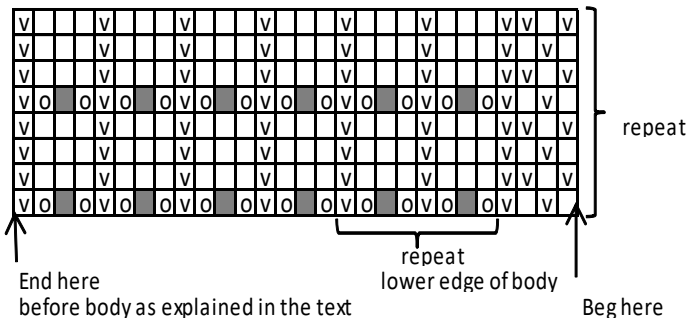
## Finishing

Sew side seams along St st-panels on front and back (leave lace patt sides hang loose on each side). Leave approx. 26 cm/9.8 in for armholes. Sew shoulder seams.

**Neck band:** There is no neck band in the original model in photo, but if you wish, you can crochet sc-rnd with double yarn (1 strand off-white – 1 strand light grey) along neck edge. Use crochet hook size 5 mm.

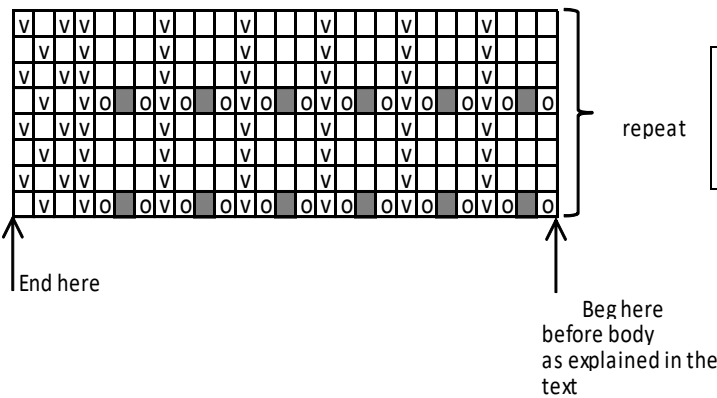


PATTERN I, left side of the poncho



- = knit (knit on RS, purl on WS)
- ∇ = purl (purl on RS, knit on WS)
- = 1 yo
- = sl 1 st, K2tog, pssso

PATTERN II, right side of the poncho



# Viking Bjørk

## Sweater

1408-10

Size:	XS	S	M	L	XL	XXL
<b>Bust:</b>	90	95	100	106	112	120 cm
	35.4	37.4	39.4	41.8	44.1	47.2 in
<b>Length:</b>	60	62	62	64	64	65 cm
	23.6	24.4	24.4	25.2	25.2	25.6 in
<b>Sleeve length:</b>	55	55	56	56	57	57 cm
	21.7	21.7	22	22	22.4	22.4 in

**ALTERNATIVE YARNS: Viking Bjørk (90% cotton, 10% merino wool), Viking Alpaca Silk (50% alpaca, 50% silk), 50 g ball**

Beige, 507:	4	5	5	6	6	7 balls
Off-White, 502:	4	5	5	6	6	7 balls

Circular needle and double pointed needles size 3 mm – US 1 or 2 and 2 or 3 – UK/Canadian 13 or 12 and 11

**Gauge:** 28 sts = approx. 10 cm/4 in over patt using needles size 3 mm. **Check your gauge to ensure success.**

### Pattern I:

**1<sup>st</sup> row: (RS) K1, P1**

**2<sup>nd</sup> row: (WS) Knit**

**Rep rows 1-2**

### Work both pieces separately!

**Beg from right piece:** Using needles size 3 mm and beige yarn, cast on 127-133-141-149-157-169 sts. Work back and forth 6 rows in Garter st. Cont working back and forth in patt (Note! Always slip first st). When work measures approx. 39-40-39-41-40-41 cm/15.4-15.7-15.4-16.1-15.7-16.1 in, bind off mid st (= armhole), and finish each side separately.

Left side (= back): Cont working in patt, and dec (= K2tog on WS row inside 1 st) mid back for V-neck every 2<sup>nd</sup> row, rep altog. 8 times. Rep every 4<sup>th</sup> row until there is altog. 25-26-27-28-29-30 dec. When work measures approx. 60-62-62-64-64-65 cm/23.6-24.4-24.4-25.2-25.2-25.6 in, and armhole measures approx. 21-22-23-23-24-24 cm/8.3-8.7-9.1-9.1-9.4-9.4 in, bind off.

Work same for the other side, rev all shaping.

### Work same for left piece, but with off-white.

### Right sleeve

Using needles size 3 mm and beige yarn, cast on 48 sts. Work back and forth 2 rows in Garter st. Cont working in rnds in patt and inc as charted (= approx. 10 cm/4 in). Bind off, knit-sts knitwise, and purl-sts purlwise.

Pick up along cast-on edge approx. 50 sts (same for all sizes). Work back and forth 6 rows in Garter st. Inc evenly across last row number of sts to be 73-73-75-75-77-77 sts. Cont working back and forth in patt I, and inc 1 st at each edge approx. every 2-1 1/2-1 1/2-1 1/2-1 1/2-1 1/2 cm/0.8-0.6-0.6-0.6-0.6-0.6 in until there is altog. 117-121-129-129-135-135 sts on a row. When sleeve measures the given length, or as desired, bind off.

**Work same for the other sleeve, but with off-white yarn.**

**Finishing**

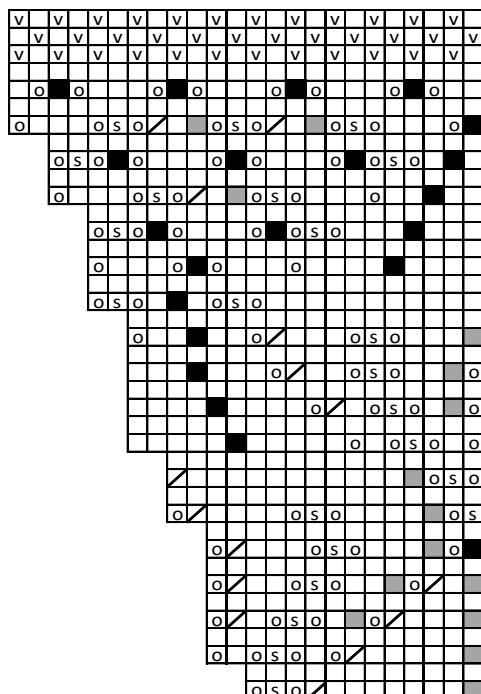
Sew shoulder seams.

Sew mid front and back seams.

**Neck band:** Beg mid front from right side edge, using needles size 3 mm and beige yarn, knit or pick up 80-84-88-90-94-98 sts (= from mid front until mid back). Work back and forth in Garter st, **but** dec 1 st at each edge every row (= beg: sl 1 st - K1 - pssso, end: K2tog). Work altog. 6 rows. Bind off. Work same for left side, but with off-white yarn. Sew seams mid front and back.

Sew on sleeves. Weave in all ends on WS.

SLEEVE PATTERN



- = knit (knit on RS, purl on WS)
- = K2togtbl
- = sl 1 st, K2tog, pssso
- = 1 yo
- ⊠ = K1tl
- ⊞ = K2tog
- ∇ = purl (purl on RS, knit on WS)

# Viking Bjørk

## Sweater

1408-11

Size:	S –	M –	L –	XL
<b>Waist:</b>	90 –	96 –	102 –	109 cm
	35.4 –	38.8 –	40.2 –	46.8 in
<b>Length:</b>	67 –	68 –	70 –	72 cm
	26.4 –	26.8	27.6 –	28.3 in
<b>Sleeve length:</b>	30 –	32 –	34 –	35 cm
	11.8 –	12.6 –	13.4 –	13.8 in

**ALTERNATIVE YARNS:** Viking Bjørk ( 90% cotton, 10% merino wool), Viking Alpaca Silk ( 50% alpaca , 50% silk), 50 g ball

White, 500 : 8 – 9 – 9 – 10 balls

Needles size 3 mm – US 2 or 3 – UK/Canadian 11

**Gauge:** 25 sts = approx. 10 cm/4 in over St st using needles size 3 mm. **Check your gauge to ensure success.**

**Seed st**

**1<sup>st</sup> rnd:** K1, P1

**2<sup>nd</sup> rnd:** Knit all purl-sts, and purl all knit-sts.

Rep 2<sup>nd</sup> rnd.

Using needles size 3 mm, cast on 280 – 300 – 320 – 340 sts. Work in rnds approx. 2 cm/0.8 in in Seed st. Work in rnd in St st, and after that cont as foll: \*Work in patt I as charted (patt over 13 sts) + K7\*, rep \*-\* across the rnd. When patt I is ready, cont working in patt II as foll: \*K5, patt II over 3 sts, K12 \*, rep \*-\* across the rnd. Cont working as established, and dec approx. every 7 cm/2.8 in as foll: \*K5, patt II over 3 sts, K10, and K2tog\*, rep \*-\* across the rnd. Rep dec with 1 st less between dec until 13 St sts rem between each patt report. There is now 224 – 240 – 256 – 272 sts on a rnd. When work measures approx. 31 – 32 – 31 – 33 cm/12.2-12.6-12.2-13 in, work again in patt I as charted with 3 St sts in between. When patt I ready, cont working in St st over all sts until work measures altog. 36 – 37 – 36 – 38 cm/14.2-14.6-14.2-15 in. Place one patt mid front, and place markers each side 113 – 121 – 129 – 137 sts for front, and 111 – 119 – 127 – 135 sts for back, and one marker round mid front st.

Beg from side marker, work in St st over 70 – 74 – 79 – 83 sts. Turn, P224 – 240 – 256 – 272 sts. Pick up from WS 27 – 27 – 29 – 29 sts back of first sts on the row. Turn, and cont working back and forth in St st, **same time** dec for V-neck 1 st beg of each row. When work measures approx. 46 – 47 – 46 – 48 cm/18.1-18.5-18.1-18.9 in, bind off 12 sts at each side for armholes (6 sts both sides of the markers). Finish back and fronts separately.

**Back**

Cont working back and forth in St st. Bind off at each edge every 2<sup>nd</sup> row 1x3 sts, 1x2sts, and 1x1st. When work measures approx. 65 – 66 – 68 – 70 cm/25.6-26-26.8-27.6 in, bind off 43 – 47 – 53 – 55 mid sts for neck edge. Finish each side separately. Bind off at neck edge every 2<sup>nd</sup> row 1x4 sts, and 1x1 st (= 17 – 19 – 20 – 23 sts rem for shoulder). When work measures approx. 67 – 68 – 70 – 72 cm/26.4-26.8-27.6-28.3 in, bind off. Work same for the

other side, rev all shaping.

### Right front

Cont working back and forth in St st. Bind off at armhole edge same as for back, and rep V-neck dec same as before until 15 – 17 – 19 – 21 sts rem. When front measures same as back, bind off.

Left front: Work same as for right front, rev all shaping.

### Sleeves

Using needles size 3 mm, cast on 105 – 105 – 120 – 120 sts. Work in rnds approx. 2 cm/0.8 in in Seed st. Work 1 rnd in St st, and after that cont in patt: \*K1, patt I as charted (patt over 13 sts) + K1\*, rep \*-\* across the rnd.

When patt I is ready, cont working in patt II as foll: \*K6, patt II over 3 sts, and K6\*, rep \*-\* across the rnd.

When sleeve measures 28 – 30 – 32 – 33 cm (or as desired), bind off 12 sts mid under sleeve (6 sts both sides of the marker). Bind off at each edge every 2<sup>nd</sup> row 1x4 sts, 1x2 sts, and 1x1 st. Bind off rem sts.

Work same for the other sleeve.

### Finishing

Sew shoulder seams. Sew on sleeves.

### Neck band

Beg from right front. Using needles size 3 mm, pick or knit up approx. 12 sts per every 5 cm/2 in. Work back and forth approx. 2 cm/0.8 in in Seed st. Bind off.

Sew short edges of the neck band to the body.

Weave in all ends on WS.

# Viking Bjørk

## Cardigan

1408-12

Size:	S	M	L	XL	XXL
<b>Bust:</b>	90	95	102	110	118 cm
	35.4	37.4	40.2	43.3	46.1 in
<b>Length:</b>	50	52	52	53	54 cm
	19.7	20.5	20.5	20.9	21.3 in
<b>Sleeve length:</b>	32	34	34	36	36 cm
	12.6	13.4	13.4	14.2	14.2 in

**ALTERNATIVE YARNS: Viking Bjørk (90% cotton, 10% merino wool), Viking Alpaca Silk (50% alpaca, 50% silk) 50 g ball**

White, 500:	5	6	6	7	7 balls
Light Grey, 513	2	2	2	3	3 balls
Dark Grey, 515	2	2	2	3	3 balls

Circular needle and double pointed needles size 3 mm – US 2 or 3 – UK/Canadian 11

**Gauge:** 25 sts = approx. 10 cm/4 in over St st using needles size 3 mm. **Check your gauge to ensure success.**

### Seed st

**1<sup>st</sup> row:** K1, P1

**2<sup>nd</sup> row:** Knit all purl-sts, purl all knit-sts

Rep 2<sup>nd</sup> row.

### STRIPES:

4 rnds with white – \*2 rnds with light grey – 4 rnds with white – 2 rnds with dark grey – 4 rnds with white\* – rep \*-\*

### CARDIGAN

Using needles size 3 mm and white yarn, cast on 225-237-255-275-295 sts.

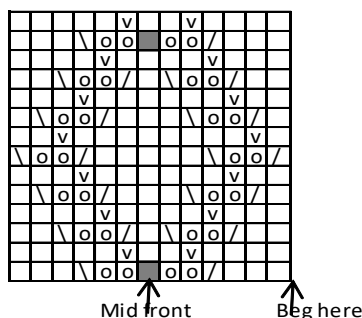
Work back and forth in Seed st with stripes. Place markers each side, 113-119-129-139-149 sts for back, and 56-59-63-68-73 sts for each front. When work measures approx. 30-31-31-31-31 cm/11.8-12.2-12.2-12.2-12.2 in, bind off 12 sts each side (6 sts both sides of the markers). Leave work aside, and knit the sleeves.

### Sleeves

Using needles size 3 mm and white yarn, cast on 75-79-83-85-85 sts. Work back and forth in Seed sts with stripes same as for body. Inc 1 st at each edge approx. every 4½ -4 -3½ -3½ -3 ½ cm/1.8-1.6-1.4-1.4-1.4 in until there is altog. 89-95-101-105-105 sts on a row. When sleeve measures the given length, or as desired (Note! End with same stripe as body), bind off 6 sts at each edge. Leave work aside, and knit same for the other sleeve.

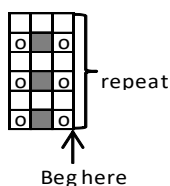
**Yoke:** Slip all pieces on same circular needle (sleeves over the bound-off armhole sts) = 355-379-409-437-457 sts. Cont working back and forth, cont working same as before. Place markers at each 4 seamline (between 2 sts). Beg dec: Work until 2 sts rem before a marker, K2togtbl, K2tog. Rep dec at each 4 seamline every 2<sup>nd</sup> row altog. 30-32-35-38-40 times = 115-123-129-133-137 sts on a row. Work 3

Pattern I



- = Knit
- ▧ = K2tog
- = 1 yo
- = Sl 1 st, K2tog, pssso
- ▨ = Sl 1 st, K1, pssso
- ▮ = Purl

Pattern II



cm/1.2 in in Seed st without raglan-dec (= neck band). Bind off, knit-sts knitwise, purl-sts purlwise.

Sew under arm seams. Weave in all ends. If you wish, you can sew on zipper.

## Viking Bjørk

### Sweater

1408-13

Size:	S –	M –	L –	XL
<b>Bust:</b>	96 –	106 –	112 –	120 cm
	38.8 –	41.6 –	44.1 –	47.2 in
<b>Length:</b>	65 –	66 –	67 –	68 cm
	25.6 –	26 –	26.4 –	26.8 in
<b>Sleeve length:</b>	48 –	49 –	50 –	51 cm
	18.9 –	19.3 –	19.7 –	20.1 in

**ALTERNATIVE YARNS:** Viking Bjørk (90% cotton, 10% merino wool), Viking Alpaca Silk (50% alpaca, 50% silk) 50 g ball

White, 500 : 9 – 10 – 11 – 12 balls

Circular needle and double pointed needles size 2 ½ and 3 mm – US 1 or 2 and 2 or 3 – UK/Canadian 13 or 12 and 11

**Gauge:** 25 sts = approx. 10 cm/4 in over St st using needles size 3 mm. **Check your gauge to ensure success.**

#### Seed st

**1<sup>st</sup> rnd:** K1, P1

**2<sup>nd</sup> rnd:** Knit all purl-sts, and purl all knit-sts

Using needles size 3 mm, cast on 240 – 264 – 280 – 304 sts. Work in Seed st. Place markers each side, 121 – 133 – 141 – 153 sts for front, and 119 – 131 – 139 – 151 sts for back. Work 2 rnds in St st, and then in patt I 4 times in

height. After patt I, cont with patt II until work measures approx. 27 cm/10.6 in (Sizes L and XL: Adjust number of sts to be 279 – 303 sts). Work in patt III, and cont working until work measures approx. 38 cm/15 in, (Sizes L and XL: Adjust number of sts to be 280 – 304 sts). Work in patt I, rep 2 times. Cont working in St st until work measures approx. 46 cm/18.1 in. Divide work at sides for armholes. Work separately for back and front..

**Back:** Cont working back and forth in St st. When work measures approx. 63 – 64 – 65 – 66 cm/24.8-25.2-25.6-26 in, slip 29 – 29 – 31 – 31 mid sts on holder. Finish each side separately. Bind off at neck edge every 2<sup>nd</sup> row 1x9 sts, 1x5 sts. Cont working until work measures approx. 65 – 66 – 67 – 68 cm/25.6-26-26.4-26.8 in.

Work same for the other front, rev all shaping.

**Front:** Cont working back and forth in St st. When work measures approx. 59 – 60 – 61 – 62 cm/23.2-23.6-24-24.4 in, slip 19 – 19 – 21 – 21 mid sts on holder. Finish each side separately. Bind off at neck edge every 2<sup>nd</sup> row 1x10 sts, 1x5 sts, 1x3 sts, and 2x1 st. Cont working until work measures approx. 65 – 66 – 67 – 68 cm/25.6-26-26.4-26.8 in.

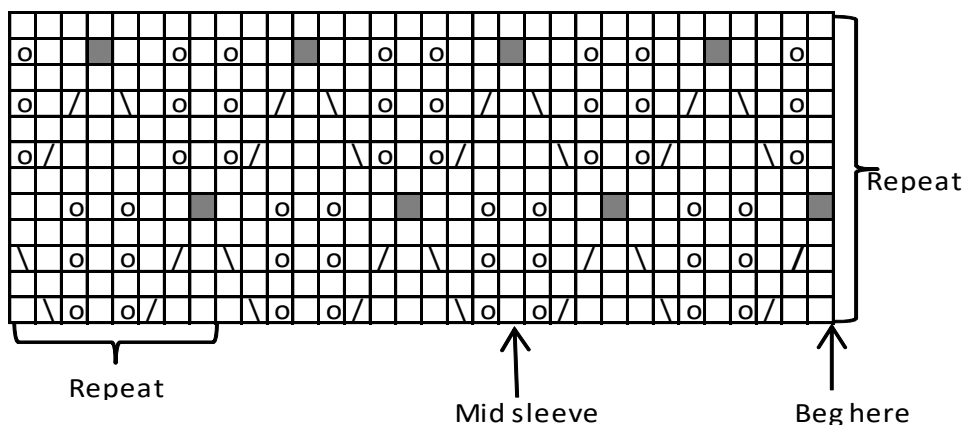
Work same for the other side, rev all shaping.

**Sleeves:** Using needles size 3 mm, cast on 62 – 68 – 70 – 74 sts. Work 3 rnds in Seed st. Place a marker mid under sleeve. Work 2 rnds in St st, and then in patt I 4 times in height. Cont working in patt II until sleeve measures approx. 40 – 41 – 42 – 43 cm/15.7-16.1-16.5-16.9 in, cont with patt I until there is 96 – 104 – 104 – 110 sts on a rnd, and sleeve measures approx. 48 – 49 – 50 – 51 cm/18.9-19.3-19.7-20.1 in (or as desired). Bind off.

**Finishing:** Join shoulder seams. Sew on sleeves.

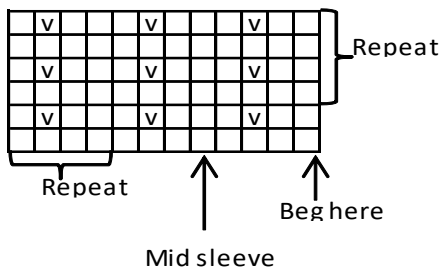
**Neck band:** Using needles size 2½ mm, pick or knit up approx. 128 – 130 – 132 – 134 sts around neck edge. Work 3 rnds in Seed st. Bind off, knit-sts knitwise, and purl-sts purlwise.

Pattern I

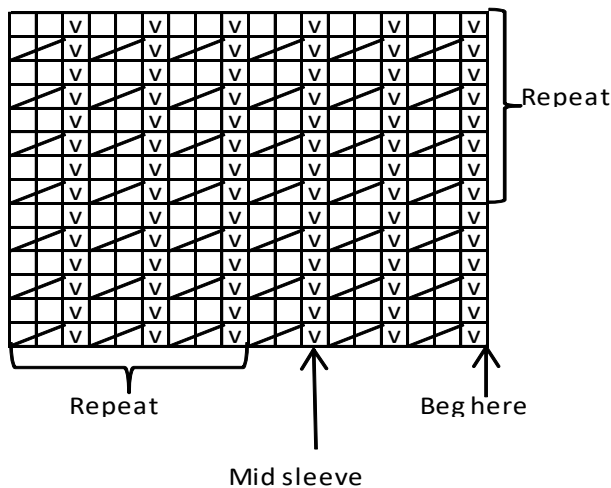


- = Knit
- ▤ = K2tog
- = 1 yo
- ▥ = Sl 1 st, K1, pss0
- = Sl 1 st, K2tog, pss0

Pattern II



Pattern III



- v = Purl
- / = Knit 2nd st from back of the work, knit 1st st, sl both sts from needle

129 – 137 – 145 sts. Work back and forth 4 rows in Garter st. Change to needles size 3 mm. Work in patt A. First and last st =selvage st, knit every row. Cont working until work measures approx. 8 cm/3.1 in = back.

Work same for front.

Slip sts on same circular needle size 3 mm. Purl first st of back tog with last st of front = first st of patt A, dec same at the other side. There is now 240 – 256 – 272 – 288 sts on a rnd. Place markers each side, and mid front and back = 59 – 63 – 67 – 71 sts for each panel + side/mid sts. Cont working in rnds in patt A. When work measures approx. 17 – 18 – 18 – 19 cm/6.7-7.1-7.1-7.5 in, change to off-white yarn and cont working in patt A. When work measures approx. 23 – 24 – 25 – 25 cm/9.1-9.4-9.8-9.8 in, change to white yarn, and cont working same as before. When work measures approx. 35 cm/13.8 in, divide work at every mid st, and finish first left front.

**Left front:** Work back and forth. Beg from sidemarker.

First st is now selvage st (knit every row). Work patt A over 59 – 63 – 67 – 71 sts, and end at mid front st (= selvage st). Cont working back and forth until work measures approx. 59-60-61-62 cm/23.2-23.6-24-4.4 in.

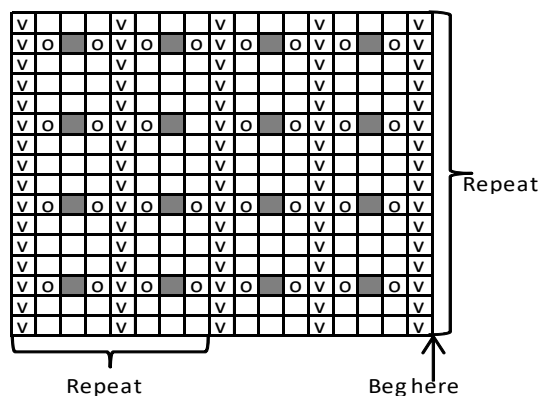
**Right front:** Work same as for left front, but pick up one st behind mid front st = selvage st.

**Left back:** Work same as for left front, but pick up one st behind side st = selvage st.

**Right front:** Work same as for left back, but pick up one st behind mid back st and side st = selvage sts.

**Finishing:** Join shoulder seams.

Pattern A



- = Knit on RS, purl on WS
- v = Purl on RS, knit on WS
- o = 1 yo
- = Sl 1 st, K2tog, pssso

## Viking Bjørk

Top 1408-14

**Size:** S – M – L – XL

**Bust:** 88 – 96 – 104 – 112 cm

34.6 – 38.8 – 41 – 44.1 in

**Length:** 59 – 60 – 61 – 62 cm

23.2 – 23.6 – 24 – 24.4 in

**ALTERNATIVE YARNS:** Viking Bjørk (90% cotton, 10% merino wool), Viking Alpaca Silk (50% alpaca, 50% silk) 50 g ball

White, 500 : 3 – 4 – 4 – 5 balls

Beige, 507 : 2 – 2 – 2 – 3 balls

Off-White, 502 : 1 – 1 – 1 – 2 balls

Circular needle and double pointed needles size 2 ½ and 3 mm –US 1 or 2 and 2 or 3 – UK/Canadian 13 or 12 and 11

**Gauge:** 25 sts = approx. 10 cm/4 in over St st using needles size 3 mm. **Check your gauge to ensure success.**

Using needles size 2½ mm and beige yarn, cast on 121 –

# Viking Bjørk

## Sweater with crochet sleeves 1408-15

Size:	XS	S	M	L	XL	XXL
<b>Bust:</b>	85	90	96	102	110	118 cm
	33.5	35.4	38.8	40.2	43.3	46.4 in
<b>Length:</b>	60	62	62	64	64	65 cm
	23.6	24.4	24.4	25.2	25.2	25.6 in
<b>Sleeve length:</b>	50	50	52	52	52	53 cm
	19.7	19.7	20.5	20.5	20.5	20.9 in

**ALTERNATIVE YARNS:** Viking Bjørk (90% cotton, 10% merino wool), Viking Alpaca Silk (50% alpaca, 50% silk) 50 g ball

White, 500 9 10 10 11 11 12 balls

Circular needle size 3 mm – US 2 or 3 – UK/Canadian 11  
Crochet hook size 4 mm – US G/6 – UK/Canadian 8

**Gauge:** 25 sts = approx. 10 cm/4 in over Garter st using needles size 3 mm. **Check your gauge to ensure success.**

**Gauge (crochet):** 20 hdc with crochet hook size 4 mm = approx. 10 cm/4 in. **Check your gauge to ensure success.**

### BACK

Note! Work all the time in Garter st. Using needles size 3 mm, cast on 116-122-130-138-148-158 sts. Work in Garter st until work measures approx. 8-9-9-10-10-11 cm/3.1-3.5-3.5-4-4-4.3 in. Dec 1 st at each edge inside 1 st. Rep dec approx. every 2 cm/0.8 altog. 10 times. When work measures approx. 35-36-35-37-36-36 cm/13.8-14.2-13.8-14.6-14.2-14.2 in, inc 1 st at each edge approx. every 1 cm/0.4 in altog 5 times = 106-112-120-128-138-148 sts. When work measures 60-62-62-64-64-65 cm/23.6-24.4-24.4-25.2-25.2-25.6 in, bind off.

### FRONT

Work same as for back. When work measures approx. 50-52-52-54-54-55 cm/19.7-20.5-20.5-21.3-21.3-21.7 in, bind off mid 28-28-30-30-32-32 sts for neck edge. Finish each side separately. Bind off at neck edge every 2<sup>nd</sup> row 1x4 sts, 1x3 sts, 1x2 sts, and 3x1 st (same for all sizes). When front measures same as back, bind off.

Work same for the other side, rev all shaping.

### SLEEVES

Using needles size 3 mm, cast on 48-50-50-52-54-54 sts. Work 16 rows in Garter st. Bind off.

Crochet as foll: 1 sc to each st. Turn, 1 hdc to each sc, **but** inc evenly across number of sts to be 57-59-61-61-63-63 sts (inc = 2 hdc into same st). Cont as foll:

**1<sup>st</sup> row:** Ch5 (4 ch-sts = 1<sup>st</sup> dtr + 1 ch-st), skip 1 st, \*dtr + ch1 to next st – skip 1 st\*, rep \*-\* across the row, end with 1 dtr into last st. Turn.

**2<sup>nd</sup> row:** Ch2 = 1<sup>st</sup> hdc. 1 hdc to each st, but inc 1 st at each edge (= 2 hdc into same st). Turn.

**3<sup>rd</sup> row:** Ch2 = 1<sup>st</sup> hdc. 1 hdc to each st. Turn.

**4<sup>th</sup> row:** Ch2 = 1<sup>st</sup> hdc. 1 hdc to each st, but inc 1 st at each edge. Turn.

**5<sup>th</sup> row:** Ch4 = 1<sup>st</sup> dc + 1 ch-st. \*Skip 1 st, 1 dc + ch1\*, rep

\*-\* across the row, and end with 1 dc into last st. Turn.

**6<sup>th</sup> row:** Ch2, 1 hdc to each st. Turn.

**7<sup>th</sup> row:** Same as 1<sup>st</sup> row.

**8<sup>th</sup> and 9<sup>th</sup> row:** Same as 4<sup>th</sup> and 5<sup>th</sup> row.

**10<sup>th</sup> and 11<sup>th</sup> row:** Ch2, 1 hdc to each st.

Rep rows 1-11, and inc as explained. There is now 81-85-87-87-93-99 sts on a row. Cont working without inc until sleeve measures approx. 50-50-52-52-52-53 cm/19.7-19.7-20.5-20.5-20.5-20.9 in, or desired length. End with a hdc-row.

Weave in all ends on WS. Sew sleeve seam.

Work same for the other sleeve.

### Finishing

Sew shoulder seams, and side seams, leaving approx. 20-21-22-22-23-25 cm/7.9-8.3-8.7-8.7-9.1-9.8 in for armholes.

**Neck band:** Using hook size 4 mm, crochet sc around neck edge. Crochet 1 rnd same as 5<sup>th</sup> row.

Sew on sleeves, and weave in all ends on WS.