

Viking Merino Superfine

Child's sweater with yoke 1403 – 1

| Size: | 2 | 4/6 | 8 | 10/12 yrs |
|-----------------------|------|------|------|-----------|
| Chest: | 59 | 68 | 75 | 83 cm |
| | 23.2 | 26.8 | 29.5 | 32.7 in |
| Length: | 36 | 45 | 50 | 58 cm |
| | 14.2 | 17.7 | 19.7 | 22.8 in |
| Sleeve length: | 28 | 34 | 38 | 45 cm |
| | 11 | 13.4 | 15 | 17.7 in |

ALTERNATIVE YARNS: Viking Superwash (100% wool, superwash), Viking Alpaca Sport (30% alpaca, 40% merino wool, 30% nylon), Viking Sportsragg (60% wool, 20% nylon, 20% acrylic), Viking Sportsgarn (100% wool), Viking Merino Superfine (100% merino wool, superwash), 50 g ball

Sweater

| | | | | |
|--------------------|---|---|---|---------|
| Cherry, 665 : | 6 | 7 | 7 | 8 balls |
| Pink, 664 : | 2 | 2 | 2 | 2 balls |
| Light Grey, 613 : | 1 | 1 | 1 | 1 ball |
| Blue, 627 : | 1 | 1 | 1 | 1 ball |
| White, 600 : | 1 | 1 | 1 | 1 ball |
| Mittens and | | | | |
| Pink, 664: | 3 | 3 | 3 | 3 balls |

Double pointed needles and circular needle size 3 and 3½ mm – US 2 or 3 and 4 – UK/Canadian 11 and 10 or 9

Gauge: 23 sts = approx. 10 cm/4 in over St st using needles size 3½ mm. **Check your gauge to ensure success.**

Body

Using needles size 3 mm and cherry clr yarn, cast on 136-156-172-192 sts. Work in rnds approx. 5 – 6 – 6 – 7 cm/2 – 2.4 – 2.4 – 2.8 in in K2,P2 rib. Change to needles size 3½ mm. Cont working in rnds in St st. When work measures 24-32-35-42 cm/9.4-12.6-13.8-16.5 in (or as desired before armholes), place markers at each side, 69-79-87-97 sts for front, and 67-77-85-95 sts for back. Bind off 8 sts at each side (4 sts both sides of the markers). Leave work aside, and knit the sleeves.

Sleeves

Using needles size 3 mm and cherry clr yarn, cast on 40-44-44-48 sts. Work in rnds approx. 5-5-6-6 cm/2-2-2.4-2.4 in K2,P2 rib. Change to needles size 3½ mm. Work in St st, and inc evenly across 1st rnd number of sts to be 44 – 50 – 52 – 54 sts. Place a marker mid under sleeve. Inc 1 st both sides of the marker approx. every 3 ½ - 4 ½ - 3 ½ - 3 ½ cm/1.4-1.8-1.4-1.4 in. Rep inc until there is 56-62-70-76 sts on a rnd, and sleeve measures approx. 28 – 34 – 38 – 45 cm/11-13.4-15-17.7 in. Bind off 8 sts mid under sleeve (4 sts both sides of the marker). Work same for the other sleeve.

Yoke: Slip sleeves over the same circular needle as front and back, with sleeves over the bound-off sts for armholes = altog. 216-248-280-312 sts. Beg from back, from left shoulder. Work 1-4-1-6 rnds in St st over all sts. Cont working in patt and dec as charted (Note, check from mid back st where to beg patt). End as charted for each size, and dec evenly across last rnd number of sts to be 92-96-96-100 sts. Cont working with pink yarn in K2,P2 rib until collar measures approx. 12-12-14-14 cm/4.7-4.7-5.5-5.5 in. Bind off in rib. Fold collar in double on RS.

Weave in all ends on WS. Sew underarm seams.

MITTENS

Size: 2/4 6/8 10/12

Using dpn size 2½ mm, cast on 32-36-40 sts. Work 6-6-7 cm/2.4-2.4-2.8 in K2,P2 rib. Change to needles size 3½ mm. Cont working in rnds, and inc for thumb gusset at one side: M1, K2-2-2, M1. Work 2 rnds without inc. Rep inc every 3rd rnd with

2 more sts between each inc until there is 6-8-8 sts for the gusset (Check the fitting, and if required rep inc 1-2 times more). Slip gusset sts on holder, and cast on 4-4-4 new sts over the gusset sts = 34-38-42 sts. Cont working in rnds over all sts until work measures approx. 10-12-16 cm/ 4-4.7-6.3 in (or as desired before dec). Knit 1 rnd, and dec evenly across 4-2-0 sts. Next rnd: *K4, K2tog*, rep *-* across the rnd. Work 4 rnds without dec. *K3, K2tog*, rep *-* across the rnd. Work 3 rnds without dec. *K2, K2tog*, rep *-* across the rnd. Work 2 rnds without dec. *K1, K2tog*, rep *-* across the rnd. Work 1 rnd without dec. Knit all sts tog in pairs. Thread yarn through rem sts, and weave in on WS.

Thumb: Slip gusset sts on needles, and pick up 4-4-4 sts from upper edge of the thumb opening + 1 st from each side = 12-14-14 sts. Work 3-4-4½ cm/1.2-1.6-1.8 in in St st. Next rnd: Knit all sts tog in pairs. Thread yarn through rem sts, and weave in on WS.

Work same for the other mitten, with thumb on the other side.

HAT

Size: 2/4 6/8 10/12

Using a short circular needle size 2½ mm, cast on 96-102-114 sts. Work 4 rnds in K1,P1 rib. Change to needles size 3½ mm. Cont working in St st until work measures approx. 5-6-6 cm/2-2.4-2.4 in. Turn work inside out (= folding edge), and cont working 14-16-18 cm/5.5-6.3-7.1 in in St st measured from folding edge. Beg dec for crown: *K4, K2tog*, rep *-* across the rnd. Work 3 rnds in St st. Next rnd: *K3, K2tog*, rep *-* across the rnd. Work 3 rnds in St st. Next rnd: *K2, K2tog*, rep *-* across the rnd. Work 3 rnds in St st. Next rnd: *K1, K2tog*, rep *-* across the rnd. Work 3 rnds in St st. Next rnd: Knit all sts tog in pairs. Thread the yarn through rem sts, tighten the yarn, and weave in on WS.

Earflaps: Using dpn size 3½, cast on 50-50-50 sts. Work in rnds 3-4-5 cm/1.2-1.6-2 in in St st. Dec at each edge as foll: K2tog, K21-21-21, K2togtbl (= half of an earflap), K2tog, K21-21-21, K2togtbl. Work 1 rnd in St st. Rep dec every 2nd rnd with 2 sts less between each dec until 6-6-6 sts rem. Break yarn, and thread through rem sts, weave in on WS. Work same for the other earflap.

Sew earflaps along folding edge, approx. 6-6-7 cm/2.4-2.4-2.8 in between earflaps mid back. Make a pom-pom with pink yarn, and fasten it on top.

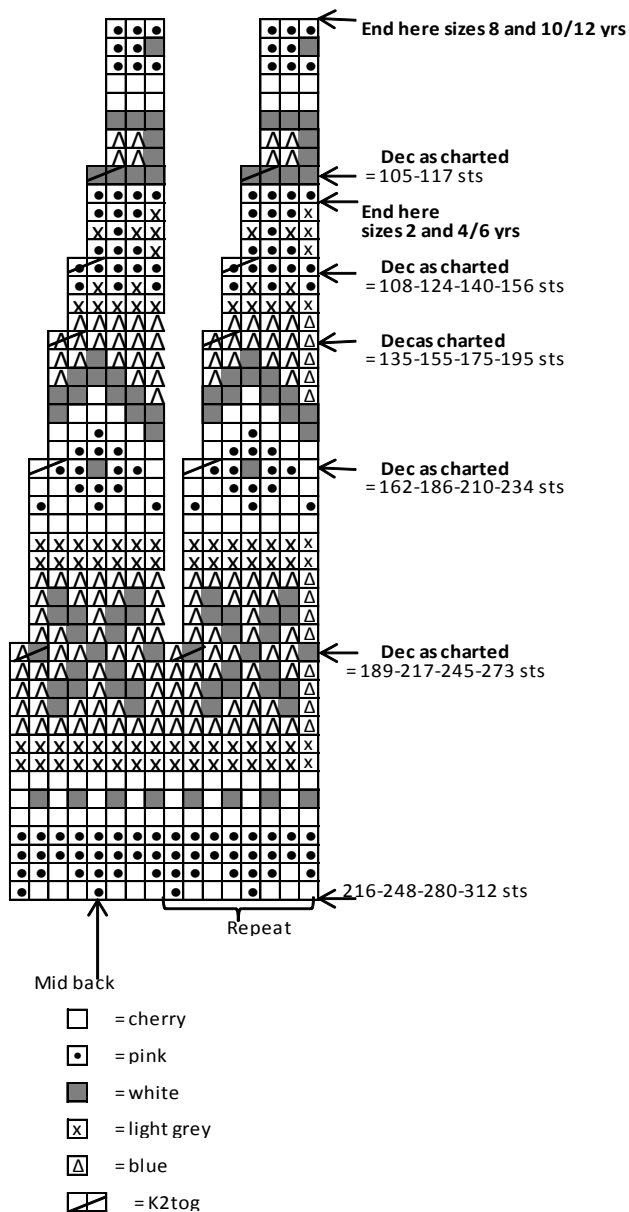
Gauge: 23 sts = approx. 10 cm/4 in over St st using needles size 3½ mm. **Check your gauge to ensure success.**

Using needles size 3 mm and black yarn, cast on 224 – 248 – 272 – 296 sts. Work in rnds approx. 6 – 7 – 7 – 8 cm/2.4-2.8-2.8-3.1 in in K2,P2 rib. Change to needles size 3½ mm. Cont working in rnds in St st. When work measures 45-45-45-46 cm/17.7-17.7-17.7-18.1 in (or as desired before armholes), place markers at each side, 113 – 125 – 137 – 149 sts for front and 111 – 123 – 135 – 147 sts for back. Bind off 12 at each side (6 sts both sides of the markers). Leave work aside, and knit the sleeves.

Sleeves: Using needles size 3 mm and lack yarn, cast on 44 – 48 – 48 – 52 sts. Work in rnds approx. 6 – 6 – 7 – 7 cm/2.4-2.4-2.8-2.8 in in K2,P2 rib. Change to needles size 3½ mm. Cont working in St st, and inc evenly across 1st rnd number of sts to be 56 – 60 – 64 – 68 sts. Place a marker beg of the rnd. Inc 1 st both sides of the marker approx. every 2 cm/0.8 in. Rep inc until there is 96 – 100 – 108 – 112 sts on a rnd, and sleeve measures approx. 47-48-49-50 cm/18.5-18.9-19.3-19.7 in, or desired length. Bind off 12 sts mid under sleeve (6 sts both sides of the marker). Work same for the other sleeve.

Yoke: Slip sleeves on same circular needle as front and back, sleeves over the bound-off sts for armholes = altog. 368 – 400 – 440 – 472 sts o a rnd. Beg from back, from left shoulder. Work in patt and dec as charted (Note! Check from mid back st where to beg patt). End as charted, but dec evenly across last rnd number of sts to be 92 – 100 – 108 – 116 sts. Cont working with light grey yarn in K2,P2 rib until collar measures approx. 15 cm/5.9 in. Bind off in rib. Fold collar in double on RS.

Weave in all ends on WS. Sew underarm seams.



Viking Merino Superfine

Sweater with yoke 1403-2

| | |
|-----------------------|---|
| Size: | S – M – L – XL |
| Bust: | 97 – 108 – 118 – 129 cm 38.2 – 42.5 – 46.4 – 50.7 in |
| Length: | 66 – 67 – 68 – 70 cm 26 – 26.4 – 26.8 – 27.6 in |
| Sleeve length: | 47 – 48 – 49 – 50 cm 18.5 – 18.9 – 19.3 – 19.7 in |

ALTERNATIVE YARNS: Viking Superwash (100% wool, superwash), Viking Alpaca Sport (30% alpaca, 40% merino wool, 30% nylon), Viking Sportsragg (60% wool, 20% nylon, 20% acrylic), Viking Sportsgarn (100% wool), Viking Merino Superfine (100% merino wool, superwash), 50 g ball

| | |
|-------------------|-------------------------|
| Black, 603 : | 11 – 12 – 13 – 14 balls |
| Light Grey, 613 : | 2 – 2 – 2 – 2 balls |
| Violet, 668 : | 2 – 2 – 2 – 2 balls |
| White, 600 : | 1 – 1 – 1 – 1 ball |

Double pointed needles and circular needle size 3 and 3½ mm – US 2 or 3 and 4 – UK/Canadian 11 and 10 or 9

Viking Merino Superfine Cardigan 1403-3

Size: S - M - L - XL
Bust : 97 - 107 - 118 - 128 cm
 38.2 - 42.2 - 46.4 - 50.3 in
Length: 66 - 67 - 68 - 70 cm
 26 - 26.4 - 26.8 - 27.6 in
Sleeve length: 48 - 49 - 50 - 52 cm
 18.9 - 19.3 - 19.7 - 20.5 in

ALTERNATIVE YARNS: Viking Merino Superfine (100% Merino Wool-Superfine), Viking Superwash (100 % wool, superwash), Viking Alpaca Sport (30% alpaca, 40 % merino wool, 30% nylon), Viking Sportsragg (60% wool, 20% nylon, 20% acrylic), Viking Sportsgarn (100% wool), 50 g ball

Black, 603 : 13 - 13 - 14 - 15 balls

Grey, 615 : 3 - 4 - 4 - 5 balls

White, 600 : 2 - 2 - 2 - 2 balls

Circular needle and double pointed needles size 3 and 3 ½ mm – US 2 or 3 and 4 – UK/Canadian 11 and 10 or 9 + 7 - 7 - 8 - 8 buttons

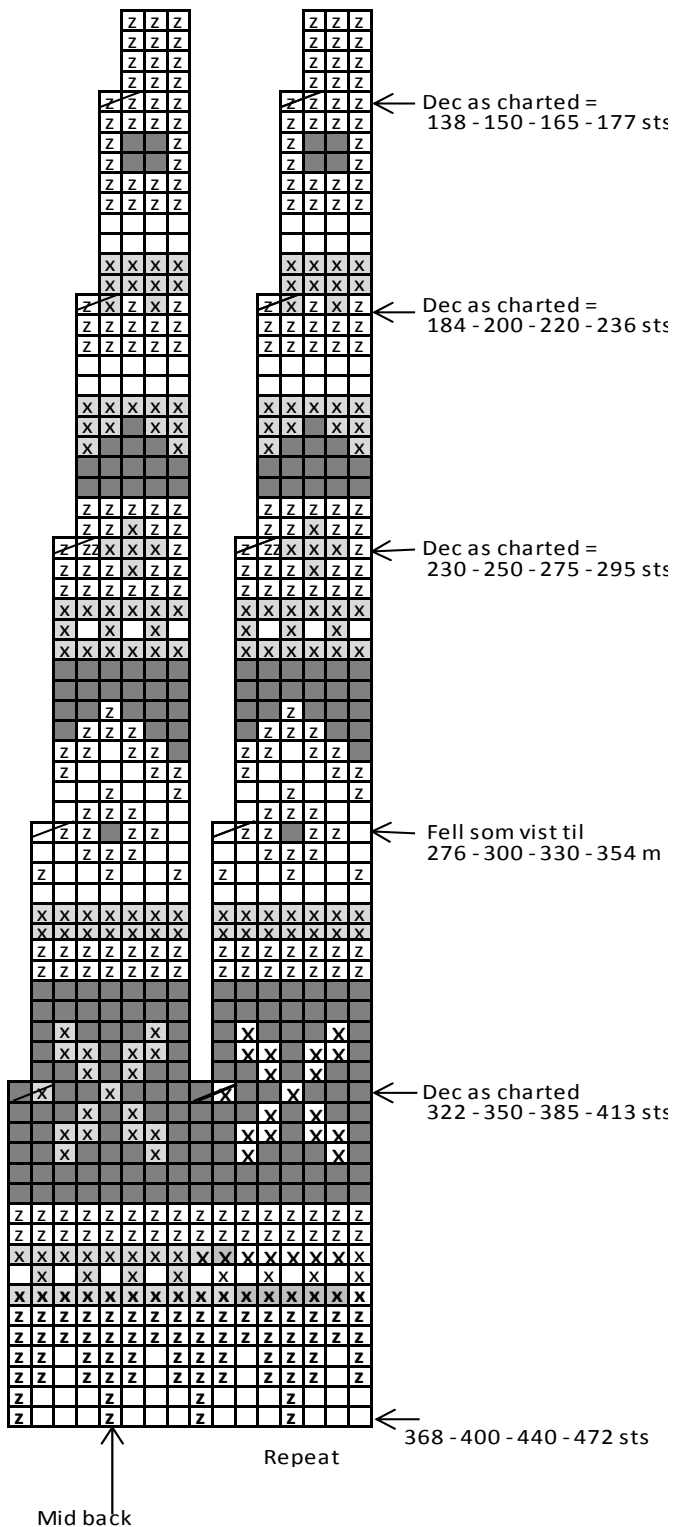
Gauge: 23 sts = approx. 10 cm/4 in over St st using needles size 3½ mm. **Check your gauge to ensure success.**

TIP! When you work in a patt with 2 clr, it's important to maintain the order of yarns over your finger. Always hold the darker clr in front throughout the whole project.

Note! Instruction contains neck edge shaping, worked back and forth. If you wish to work in rnds, and cut the sts afterwards, see instruction below.

Using needles size 3 mm and black yarn, cast on 225 - 249 - 273 - 297 sts. Work back and forth in K1,P1 rib. When work measures approx. 4 cm/1.6 in, make 1 buttonhole, at left edge for man, right edge for woman. Make buttonholes on RS over 3 sts, inside 3 sts from front edge (Buttonhole: Bind off 3 sts. Next row: Cast on 3 sts over the bound-off ones). When rib measures approx. 8 cm/3.1 in, slip first and last 12 sts on holders (= sts for front bands). Change to needles size 3 ½ mm. Work 1 row in St st, and inc evenly across the row number of sts to be 217 - 241 - 265 - 289 sts (front band sts are not included). Cast on 4 new sts to the end of the row (= not incl. in the number of sts, to be cut open later on). Purl these new sts every rnd. Place markers each side, 52 - 58 - 64 - 70 sts for both fronts and 113 - 125 - 137 - 149 sts for back. Cont working in patt I, then in patt II until work measures approx. 33 - 36 - 37 - 38 cm/13-14.2-14.6-15 in (end with 2 rnds with black yarn). Work in patt III, **but** when work measures approx. 59 - 60 - 60 - 61 cm/ in, bind off mid front 18 - 20 - 20 - 20 sts for neck edge (now 4 purl-sts are included). Cont working back and forth. Bind off at each side every 2nd row 3x2 sts, and 2 - 2 - 2 - 3x1 st. When patt III is ready, cont working in St st with black yarn until work measures approx. 66 - 67 - 68 - 70 cm/26-26.4-26.8-27.6 in.

Sleeves: Using needles size 3 mm and black yarn, cast on 48 - 52 - 52 - 56 sts. Work in rnds approx. 5 - 5 - 6 - 6 cm/2 -2-2.4-2.4 in in K1,P1. Change to needles size 3 ½ mm. Work 1 rnd in St st, and inc evenly across number of sts to be 53 - 57 - 59 - 65 sts. Place a marker beg of rnd (= mid under sleeve). Work in patt I, then in patt II. Inc same time 1 st both sides of the marker approx. every 1 ½ - 1 ½ - 1 - 1 ½ cm/0.6-0.6-0.4-0.6 in. Work in patt II until sleeve measures approx. 37 - 38 - 39 - 40 cm/14.6-15-15.4-15.7 in. Work in patt IV, and after that in St st



- = Black
- = Grey
- x = White
- = Violet
- K2tog = K2tog

with black yarn until there is 111 – 115 – 119 – 125 sts on a rnd, and sleeve measures approx. 48 – 49 – 50 – 52 cm/18.9-19.3-19.7-20.5 in. Turn inside out, and work 5 rnds in St st for seam allowance. Bind off.

Finishing: Dampen the pieces slightly from WS. Sew 2 dense zigzag seams around armholes, and mid front. Cut open between seams. Sew normal zigzag to cut edges. Join shoulder seams, 37 – 42 – 47 – 52 sts for each shoulder.

Front bands: Slip 12 sts without buttonholes over needles size 3 mm. Cast on 4 new sts to the side facing body. Work St st over new sts (= seam allowance). Cont working until front band measures approx. 6 – 7 – 7 – 8 cm/2.4-2.8-2.8-3.1 in less than total length (it's important that front band doesn't turn out to be too long). Bind off seam allowance sts, and leave rem 12 sts on holder. Work same for the other front band, and make 7 – 7 – 8 – 8 buttonholes evenly spaced apart. First buttonhole is already made, and last one will be made on last row before neck band.

Neck band: Using needles size 3 mm and black yarn, pick or knit up sts from neck edge as foll: Beg from right front edge, slip sts from holder over needle, pick up approx. 20 – 21 – 23 – 25 sts along neck edge, 39 – 41 – 43 – 45 sts from back, 20 – 21 – 23 – 25 sts from left front neck edge, and slip front band sts from holder over needle = approx. 103 – 107 – 113 – 119 sts on a row. Work 1 row in St st (rib over front band sts), and after that cont working back and forth in K1,P1 rib. When neck and measures approx. 3 – 3 ½ – 3 ½ – 4 cm/1.2-1.4-1.4-1.6 in, bind off first and last 12 sts in rib. Cont working back and forth in rib over rem sts until neck band measures 6 – 7 – 7 – 8 cm/2.4-2.8-2.8-3.1 in. Bind off rather loosely in rib. Fold neck band in double, and sew on WS.

Cutting the neck edge: Sew a curving marker thread for neck edge, approx. 6 – 7 – 7 – 8 cm/2.4-2.8-2.8-3.1 in below the upper edge. Pick up with black yarn approx. 20 – 21 – 23 – 25 sts along the marked line, both sides of the mid sts (= cut open, check that patt is same on each side) + sts from back and front bands = 103 – 107 – 113 – 119 sts. Work 1 row in St st (not over front bands), and cont working back and forth in K1,P1 rib. When neck band measures approx. 3 – 3 ½ – 3 ½ – 4 cm/1.2-1.4-1.4-1.6 in, bind off first and last 12 sts in rib. Cont working back and forth in rib over rem sts until neck band measures 6 – 7 – 7 – 8 cm/2.4-2.8-2.8-3.1 in. Bind off rather loosely in rib.

Sew 2 dense zigzag seams along inner side of neck edge. Cut off all extras. Sew normal zigzag over cut edges. Fold neck and in double and sew on WS.

Sew on sleeves. Sew seam allowances over cut edges. Weave in all ends on WS. Sew on buttons.

Black, 603 : 12 – 13 – 13 – 14 balls

Grey, 615 : 3 – 4 – 4 – 5 balls

White, 600 : 1 – 2 – 2 – 2 balls

Circular needle and double pointed needles size 3 and 3 ½ mm – US 2 or 3 and 4 – UK/Canadian 11 and 10 or 9

Gauge: 23 sts = approx. 10 cm/4 in over St st using needles size 3 ½ mm. **Check your gauge to ensure success.**

TIP! When working in a patt with 2 clr, it's important to maintain the order of yarns over your finger. Always hold the darker clr in front throughout the whole project.

Note! Instruction contains neck shaping, worked back and forth. If you wish to work in rnds, and cut the sts afterwards, see instruction below.

Using needles size 3 mm and black yarn, cast on 200 – 220 – 240 – 264 sts. Work in rnds approx. 6 – 6 – 7 – 7 cm/2.4-2.4-2.8-2.8 in K1,P1 rib. Change to needles size 3 ½ mm. Work in patt I, and inc on 1st rnd evenly across number of sts to be 216 – 240 – 264 – 288 sts. Place markers each side, 109 – 121 – 133 – 145 sts for front, and 107 – 119 – 131 – 143 sts for back. When patt I is ready, cont working in patt II until work measures approx. 32 – 33-34-35 cm/12.6-13-13.4-13.8 in (end with 2 rnds with black yarn). Work in patt III, **but** when work measures approx. 59 – 60 – 61 cm/23.2-23.6-23.6-24 in, bind off mid front 17 – 19 – 19 – 21 sts for neck edge, and cont working back and forth. Bind off at each edge every 2nd row 1x5 sts, 1x3 sts, 1x2sts and 3x1 st. When patt III is ready, cont working in St st with lack yarn until work measures approx. 65 – 66 – 67 – 68 cm/25.6-26-26.4-26.8 in.

Sleeves: Using needles size 3 mm and black yarn, cast on 44 – 48 – 48 – 50 sts. Work in rnds approx. 6 – 6 – 7 – 7 cm/2.4-2.4-2.8-2.8 in in K1,P1 rib. Change to needles size 3 ½ mm. Work in patt I, and inc evenly across 1st rnd number of sts to be 57 – 59 – 59 – 61 sts. Place a marker beg of rnd (= mid under sleeve). Inc 1 st both sides of marker approx. every 1 ½ – 1 ½ – 1 – 1 cm/0.6-0.6-0.4-0.4 in. When patt I is ready, work in patt II until sleeve measures approx. 37 – 38 – 39 – 40 cm/14.6-15-15.4-15.7 in. Work in patt IV, and after that in St st with black yarn until there is 111 – 115 – 119 – 125 sts on a rnd, and sleeve measures approx. 48 – 49 – 50 – 51 cm/18.9-19.3-19.7-20.1 in. Turn inside out, and work 5 rnds in St st for seam allowance. Bind off.

Finishing : Dampen the pieces slightly from WS. Sew 2 dense zigzag seams around armholes, and cut open between seams. Sew normal zigzag over cut edges. Join shoulder seams, 32 – 37 – 43 – 48 sts for each shoulder.

Neck band: Using needles size 3 mm and black yarn, pick or knit up approx. 102 – 104 – 106 – 110 sts. Work 1 rnd in St st, and cont working in K1,P1 until neck band measures 7 cm/2.8 in. Bind off rather loosely in rib. Fold neck band in double, and sew on WS.

Cutting the neck edge: Sew a curving marker thread for neck edge, approx. 6 – 6 – 7 – 7 cm/2.4-2.4-2.8-2.8 in below upper edge. Pick up with black yarn approx. 59 – 59 – 61 – 63 sts along the marked line (check that patt is same on each side of the neck edge) + sts from back = approx. 102 – 104 – 106 – 110 sts. Work 1 rnd in St st, and cont working in K1,P1 rib until neck edge measures approx. 7 cm/2.8 in. Bind rather loosely in rib. Sew 2 dense zigzag seams along inner side of neck edge. Cut off all extras. Sew normal zigzag over cut edges. Fold neck band in double, and sew on WS.

Sew on sleeves. Sew seam allowances over cut edges. Weave in all ends on WS.

Viking Merino Superfine

Sweater and hat

1403-4

| Size: | S | M | L | XL |
|----------------|------|------|------|---------|
| Chest : | 94 | 104 | 115 | 125 cm |
| | 37 | 44.9 | 45.3 | 49.2 in |
| Length: | 65 | 66 | 67 | 68 cm |
| | 25.6 | 26 | 26.4 | 26.8 in |
| Sleeve length: | 48 | 49 | 50 | 51 cm |
| | 18.9 | 19.3 | 19.7 | 20.1 in |

ALTERNATIVE YARNS: Viking Merino Superfine (100% Merino Wool-Superfine), Viking Superwash (100 % wool, superwash), Viking Alpaca Sport (30% alpaca, 40 % merino wool, 30% nylon), Viking Sportsragg (60% wool, 20% nylon, 20% acrylic), Viking Sportsgarn (100% wool), 50 g ball

PATTERN FOR SWEATER

Viking Merino Superfine

Cardigan

1403-5a

| | |
|-----------------------|-----------------------|
| Size: | 4/6 – 8/10 – 12 yrs |
| Chest : | 67 – 77 – 88 cm |
| | 26.4 – 30.3 – 34.6 in |
| Length: | 43 – 53 – 58 cm |
| | 16.9 – 20.9 – 22.8 in |
| Sleeve length: | 33 – 40 – 45 cm |
| | 13 – 15.7 – 17.7 in |

ALTERNATIVE YARNS: Viking Merino Superfine (100% Merino Wool-Superfine), Viking Superwash (100 % wool, superwash), Viking Alpaca Sport (30% alpaca, 40 % merino wool, 30% nylon), Viking Sportsragg (60% wool, 20% nylon, 20% acrylic), Viking Sportsgarn (100% wool), 50 g ball

| | |
|-------------------|-----------------|
| Violet, 668 : | 6 – 7 – 8 balls |
| Light Grey, 613 : | 2 – 2 – 2 balls |
| White, 600 : | 1 – 1 – 1 ball |

Circular needle and double pointed needles size 3 and 3 ½ mm – US 2 or 3 and 4 – UK/Canadian 11 and 10 or 9 + 6 – 6 – 7 buttons

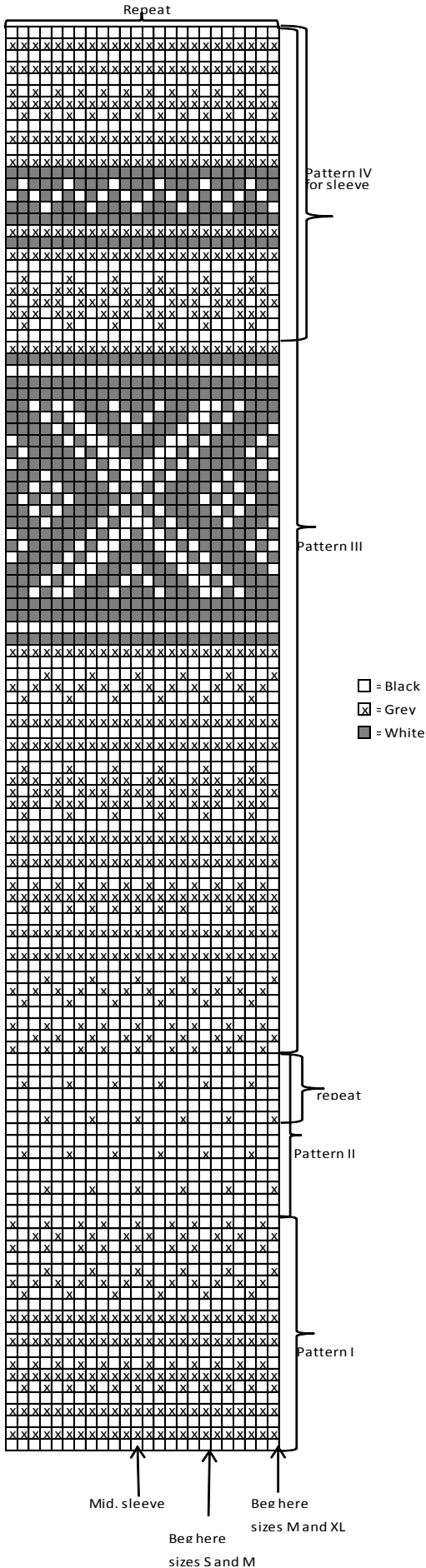
Gauge: 23 sts = approx. 10 cm/4 in over St st using needles size 3½ mm. **Check your gauge to ensure success.**

TIP! When working in a patt with 2 clrs, it's important to maintain the order of yarns over your finger. Always hold the darker clr in front throughout the whole project.

Note! Instruction contains shaping of neck edge, worked back and forth. If you wish to work in rnds, and cut the sts open afterwards, see instruction below.

Using needles size 3 mm and violet yarn, cast on 149 – 173 – 197 sts. Work back and forth in K1,P1 rib. When work measures approx. 3 cm/1.2 in, make 1 buttonhole, at right edge for girl, left edge for boy. Make buttonhole s on RS over 3 sts, inside 3 sts from front edge (Buttonhole: Bind off 3 sts. Next row: Cast on 3 sts over the bound-off ones). When rib measures approx. 6 cm/2.4 in, slip first and last 10 sts on holders (= sts for front bands). Change to needles size 3½ mm. Work in patt I, and inc evenly across 1st row number of sts to be 145 – 169 – 193 sts (front band sts are not included). Cast on 4 new sts to the end of the row (= not incl. in the number of sts, to be cut open later on). Purl these new sts every rnd. Place markers each side, 34 – 40 – 46 sts for each front, and 77 – 89 – 101 sts for back. Cont working in rnds. When patt I is ready, cont working in patt II until work measures approx. 16 – 26 – 31 cm/6.3 – 10.2 – 12.2 in (end with 2 rnds in violet yarn). Work in patt III, **but** when work measures approx. 38 – 48 – 52 cm/15-18.9-20.5 in, bind off mid front 14 – 16 – 16 sts for neck edge (incl. 4 purl-sts). Cont working back and forth. Bind off at each edge every 2nd row 1x5 – 6 – 6 sts, 1x3 sts, 1x2 sts and 3x1 st. When patt III is ready, cont working in St st with violet yarn until work measures 43-53-58 cm/16.9-20.9-22.8 in.

Sleeves: Using needles size 3 mm and violet yarn, cast on 38 – 40 – 42 sts. Work in rnds approx. 5 – 5 – 6 cm/2-2-2.4 in in K1,P1 rib. Change to needles size 3 ½ mm. Work in patt I, and inc. evenly across 1st rnd number of sts to be 45 – 49 – 55 sts. Place a marker beg of rnd (= mid under sleeve). Inc 1 st both sides of the marker approx. every 2 – 2 – 2 cm/0.8-0.8-0.8 in. When patt I is ready, cont working in patt II until sleeve measures approx. 22 – 29 – 34 cm/8.7-11.4-13.4 in (end with 2 rnds with violet yarn). Work in patt IV, and after that in St st



with violet yarn until there is 73 – 83 – 87 sts on a rnd, and sleeve measures approx. 33 – 40 – 45 cm/13-15.7-17.7 in. Turn work inside out, and work 5 rnds in St st for seam allowance. Bind off.

Finishing: Dampen pieces slightly from WS. Sew 2 dense zigzag seams around armholes and mid front. Cut open between seams. Sew normal zigzag over cut edges. Join shoulder seams, 21 – 26 – 32 sts for each shoulder.

Front bands: Slip 10 sts without buttonhole over needles size 3 mm. Cast on 4 new sts to the side facing body. Work St st over new sts (= seam allowance). Cont working until front band measures approx. 5 – 5 – 6 cm/2-2-2.4 in less than total length (it's important that front band doesn't turn out to be too long). Bind off seam allowance sts, and leave rem 10 rib sts on holder.

Work same for the other front band, but make 6 – 6 – 7 buttonholes evenly spaced apart. First buttonhole is already made, and last one will be made on last row before neck band.

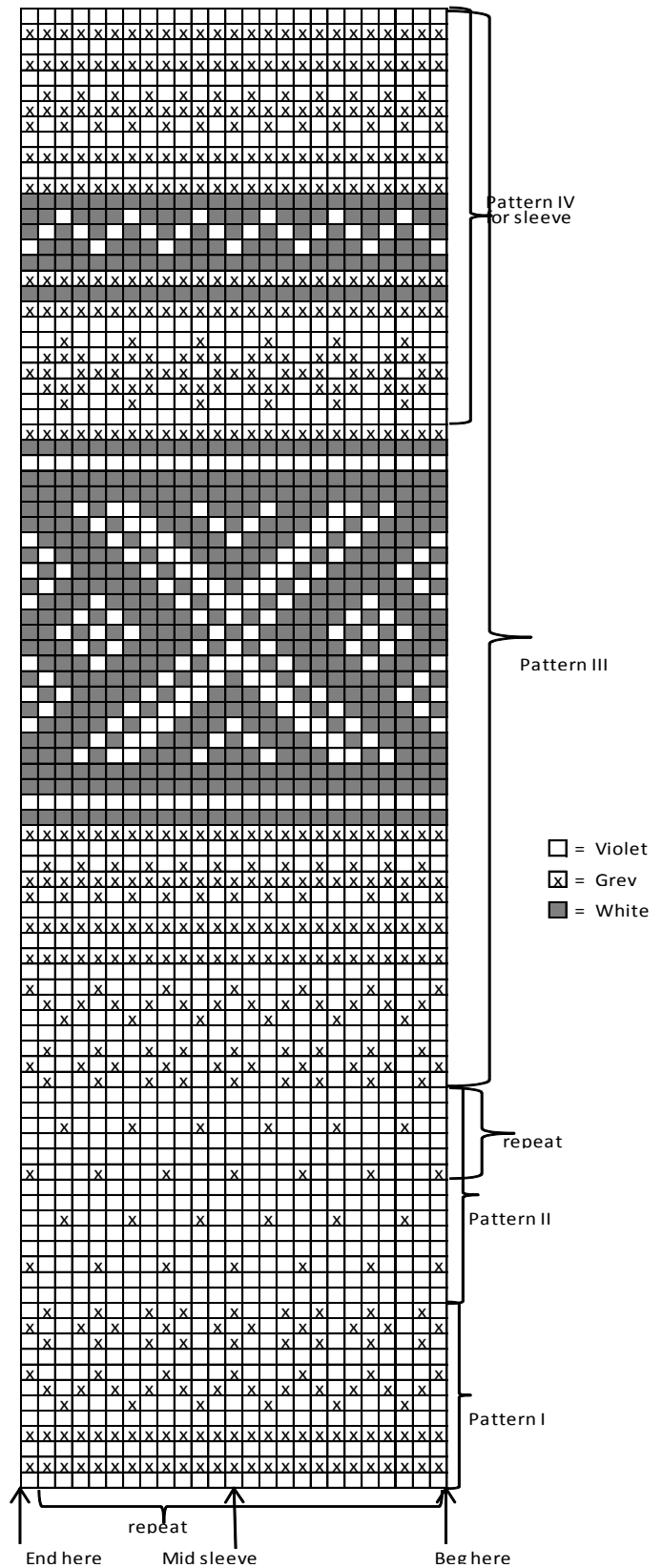
Neck band: Using needles size 3 mm and violet yarn, pick or knit up sts from neck edge as foll: Beg from right front edge, slip sts from holder over needle, pick up approx. 20 – 21 – 24 sts along neck edge, 35 – 37 – 37 sts from back, 20 – 21 – 24 sts from left front edge, and slip front band sts from holder = approx. 95 – 99 – 105 sts on a row. Work 1 row in St st (not over front band sts). Cont working in K1,P1 rib. When neck band measures approx. 3 ½ – 4 – 4 cm/1.4-1.6-1.6 in, bind off in rib first and last 10 sts. Cont working back and forth over the rem sts until neck band measures 7 – 8 – 8 cm/2.4-2.8-2.8 in. Bind off rather loosely in rib. Fold neck band in double, and sew on WS.

Cutting open the neck edge: Sew a curving marker thread for neck edge, approx. 5 – 5 – 6 cm/2-2-2.4 in below upper edge. Pick up with violet yarn approx. 20 – 21 – 24 sts along the marked line, both sides of the mid sts (= cut open, check that patt is same on both sides) + sts from back and front bands = 95 – 99 – 105 sts. Work 1 row in St st (not over front bands). Cont working back and forth in K1,P1. When neck band measures approx. 3 ½ – 4 – 4 cm/1.4-1.6-1.6 in, bind off in rib first and last 10 sts. Cont working back and forth over rem sts until neck band measures 7 – 8 – 8 cm/2.4-2.8-2.8 in. Bind off rather loosely in rib.

Sew 2 dense zigzag seams along inner side of neck edge. Cut off all extras. Sew normal zigzag over cut edges. Fold neck band in double, and sew on WS.

Sew on sleeves. Sew seam allowances over cut edges. Weave in all ends on WS. Sew on buttons.

PATTERN FOR CARDIGAN



Viking Merino Superfine

Sweater and hat 1403-5b

| | |
|-----------------------|------------------------------|
| Size: | 2/4 – 6/8 – 10/12 |
| Chest : | 63 – 73 – 83 cm |
| | 24.8 – 28.7 – 32.7 in |
| Length: | 38 – 48 – 56 cm |
| | 15 – 18.9 – 22 in |
| Sleeve length: | 30 – 36 – 44 cm |
| | 11.8 – 14.2 – 17.3 in |

ALTERNATIVE YARNS: Viking Merino Superfine (100% Merino Wool-Superfine), Viking Superwash (100 % wool, superwash), Viking Alpaca Sport (30% alpaca, 40 % merino wool, 30% nylon), Viking Sportsragg (60% wool, 20% nylon, 20% acrylic), Viking Sportsgarn (100% wool), 50 g ball

Navy Blue, 626 : 6 – 7 – 8 balls
Blue, 627 : 2 – 2 – 2 balls
White, 600 : 1 – 1 – 1 ball

Hat

Navy Blue, 626: 2 balls for each size
Blue, 627: 1 ball for each size

Circular needle and double pointed needles size 3 and 3 ½ mm – US 2 or 3 and 4 – UK/Canadian 11 and 10 or 9

Gauge: 23 sts = approx. 10 cm/4 in over St st using needles size 3½ mm. **Check your gauge to ensure success.**

TIP! When working in a patt with 2 clrs it's important to maintain the order of yarns over your finger. Always hold the darker clr in front throughout the whole project.

Note! Instruction contains neck shaping, worked back and forth. If you wish to work in rnds, and cut the sts afterwards, see instruction below.

Using needles size 3 mm and navy blue yarn, cast on 128 – 152 – 176 sts. Work in rnds approx. 5 – 5 – 6 cm/2-2-2.4 in in K1,P1 rib. Change to needles size 3 ½ mm. Work in patt I, and inc evenly across 1st rnd number of sts to be 144 – 168 – 192 sts. Place markers each side, 73 – 85 – 97 sts for front, and 71 – 83 – 95 sts for back. When patt I is ready, cont working in patt II until work measures approx. 11 – 21 – 29 cm/4.3-8.3-11.4 in (end with 2 rnds with navy blue yarn). Work in patt III, **but** when work measures approx. 33 – 43 – 50 cm/13-16.9-19.7 in, bind off mid front 15 – 17 – 19 sts for neck edge. Cont working back and forth. Bind off at each edge every 2nd row 1x5 sts, 2x2 sts, and 3x1 st. When patt III is ready, cont working in St st with navy blue yarn until work measures 38 – 48 – 56 cm/15-18.9-22 in.

Sleeves: Using needles size 3 mm and navy blue yarn, cast on 38 – 40 – 42 sts. Work in rnds approx. 5 – 5 – 6 cm/2-2-2.4 in in K1,P1 rib. Change to needles size 3 ½ mm. Work in patt I, and inc evenly across 1st rnd number of sts to be 45 – 49 – 55 sts. Place a marker beg of rnd (= mid under sleeve). Inc 1 st both sides of the marker approx. every 2 ½ – 2 ½ – 2 ½ cm/1-1-1 in. When patt I is ready, cont working in patt II until sleeve measures approx. 19 – 25 – 33 cm/7.5-9.8-13 in (end with 2 rnds with navy blue yarn). Cont working in patt IV, and after that in St st with navy blue yarn until there is 65 – 73 – 83 sts on a rnd, and sleeve measures approx. 30 – 36 – 44 cm/11.8-14.2-17.3 in. Turn work inside out, and work 5 rnds in St st for seam allowance. Bind off.

Finishing: Dampen pieces slightly from WS. Sew 2 dense zigzag seams around armholes. Cut open between seams. Sew

normal zigzag over cut edges. Join shoulder seams, 17 – 22 – 27 sts for each shoulder.

Neck band: Using needles size 3 mm and navy blue yarn, pick or knit up approx. 82 – 86 – 90 sts. Work 1 rnd in St st, and cont working in K1,P1 rib until neck band measures 7 – 8 – 8 cm/2.8-3.1-3.1 in. Bind off rather loosely in rib. Fold neck band in double, and sew on WS.

Cutting the neck edge: Sew a curving marker thread for neck edge, approx. 5 – 5 – 6 cm/2-2-2.4 in below upper edge. Pick up with navy blue yarn approx. 45 – 47 – 49 sts along the marked line (check that patt is same on each side of the neck edge) + sts from back = 82 – 86 – 90 sts. Work 1 rnd in St st, and after that in K1,P1 rib until neck band measures 6 cm/2.4 in. Bind off rather loosely in rib. Sew 2 dense zigzag seams along inner side of neck edge. Cut off all extras. Sew normal zigzag over cut edges. Fold neck band in double, and sew on WS.

Sew on sleeves. Sew seam allowances over cut edges. Weave in all ends on WS.

HAT

Using needles size 3 mm and navy blue yarn, cast on 104 – 112 – 120 sts. Work in rnds approx. 10 cm/4 in in K1,P1 rib. Change to needles size 3½ mm. Work in patt I, and then in patt II until work measures 20 – 22 – 24 cm/7.9-8.7-9.4 in. Cont working with navy blue yarn, and dec for crown: *K2, K2tog*, rep *-* across the rnd. Work 2 rnds in St st. Rep dec with 1 st less between dec until 26-28-30 sts rem. Knit all sts tog in pairs.

Break yarn, thread through rem sts, tighten the yarn, and weave in on WS.

Make a small pompom with navy blue yarn, and fasten it on top.

Viking Merino Superfine

1403-6

Sweater

| | |
|-----------------------|------------------------------|
| Size: | 2/4 – 6/8 – 10/12 |
| Chest: | 63 – 73 – 83 cm |
| | 24.8 – 28.7 – 32.7 in |
| Length: | 38 – 48 – 56 cm |
| | 15 – 18.9 – 22 in |
| Sleeve length: | 30 – 36 – 44 cm |
| | 11.8 – 14.2 – 17.3 in |

ALTERNATIVE YARNS: Viking Merino Superfine (100% Merino Wool-Superfine), Viking Superwash (100 % wool, superwash), Viking Alpaca Sport (30% alpaca, 40 % merino wool, 30% nylon), Viking Sportsragg (60% wool, 20% nylon, 20% acrylic), Viking Sportsgarn (100% wool), 50 g ball

White, 600 (Blue, 627) : 6 – 7 – 7 balls

Grey, 615 (White, 600) : 2 – 2 – 2 balls

Pink, 665 (Black, 603) : 2 – 2 – 2 balls

+ one ball of each clr for hat

Circular needle and double pointed needles size 3 and 3 ½ mm – US 2 or 3 and 4 – UK/Canadian 11 and 10 or 9 + zipper

Gauge: 23 sts = approx. 10 cm/4 in over St st using needles size 3½ mm. **Check your gauge to ensure success.**

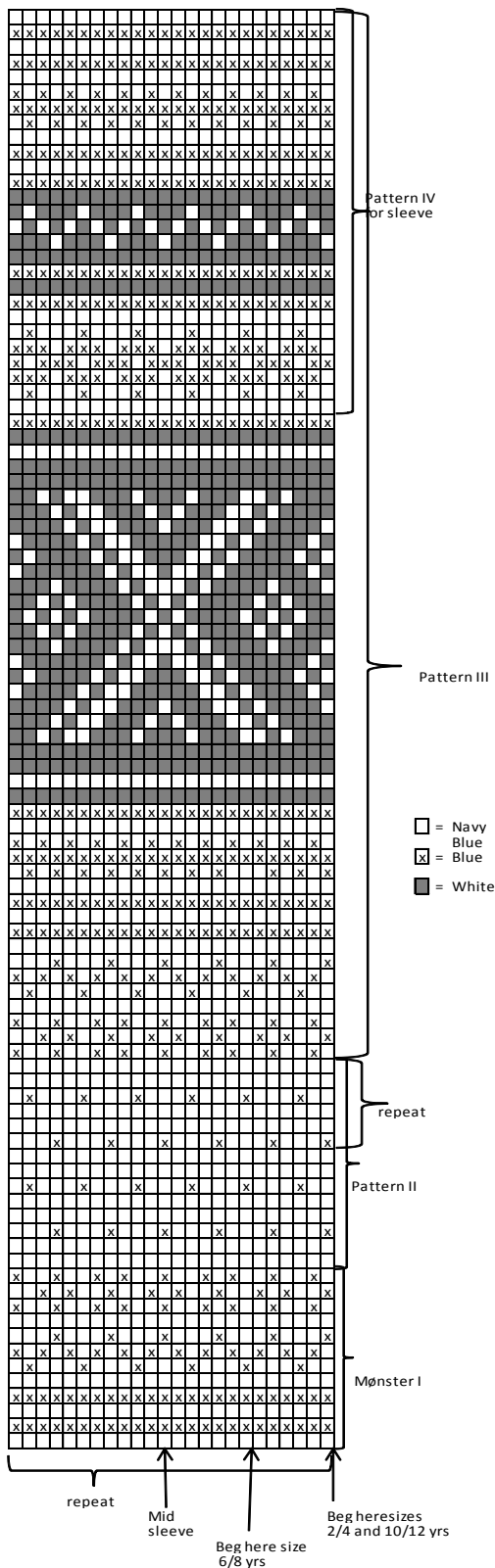
TIP! When working in a patt with 2 clrs, it's important to maintain the order of yarns over your finger. Always hold the darker clr in front throughout the whole project.

Note! Instruction contains neck shaping, worked back and forth. If you wish to work in rnds, and cut the sts afterwards, see instruction below.

Using needles size 3 mm and white (blue) yarn, cast on 128 – 152 – 176 sts. Work in rnds approx. 5 – 5 – 6 cm/2-2-2.4 in K1,P1 rib. Change to needles size 3 ½ mm. Work in St st, and inc evenly across 1st rnd number of sts to be 144 – 168 – 192 sts. Place markers at each side, 73 – 85 – 97 sts for front, and 71 – 83 – 95 sts for back. When work measures approx. 16 – 26 – 34 cm/6.3-10.2-13.4 in, work in patt I as charted. When work measures approx. 33-42-50 cm/13-16.3-19.7 in, slip 13 – 15 – 17 mid front sts on holder for neck edge. Cont working back and forth. Bind off at each edge every 2nd row 1x5 sts, 1x2 sts, and 3x1 st. When patt I is ready, cont working in St st with pink (black) yarn until work measures 38 – 48 – 56 cm/15-18.9-22 in. **Sleeves:** Using needles size 3 mm and white (blue) yarn, cast on 38 – 40 – 42 sts. Work in rnds approx. 5 – 5 – 6 cm/2-2-2.4 in in K1,P1 rib. Change to needles size 3 ½ mm. Work in St st, and inc evenly across 1st rnd number of sts to be 45 – 49 – 55 sts. Place a marker beg of rnd (= mid under sleeve). Inc 1 st both sides of the marker approx. every 2 ½ – 2 ½ – 2 ½ cm/1-1-1 in. When sleeve measures approx. 15 – 21 – 29 cm/5.9-8.3-11.4 in, work in patt II, then in patt III, and after that cont working in St st with pink (black) yarn, until there is 65 – 73 – 83 sts on a rnd and sleeve measures approx. 30 – 36 – 44 cm/11.8-14.2-17.3 in. Turn work inside out, and work 5 rnds in St st for seam allowance. Bind off.

Finishing: Dampen pieces slightly from WS. Sew 2 dense zigzag seams around armholes. Cut open between seams. Sew normal zigzag seam over cut edges. Join shoulder seams, 18 – 23 – 28 sts for each shoulder.

Neck band: Using needles size 3 mm and pink (black) yarn, pick or knit up approx. 90 – 96 – 100 sts along neck edge. Work



1 rnd in St st, and after that cont in K1,P1 rib until neck band measures 6 cm/2.4 in. Bind off rather loosely in rib. Fold neck band in double, and sew on WS.

Cutting the neck edge: Sew a curving marker thread for neck edge, approx. 5 – 5 – 6 cm/2-2-2.4 in below upper edge. Pick up with pink (black) yarn approx. 53 – 57 – 59 sts along the marked line (check that patt is same on each side of the neck edge) + sts from back = 82 – 86 – 90 sts. Work 1 rnd in St st, and after that in K1,P1 rib until neck band measures 6 cm/2.4 in. Bind off rather loosely in rib. Sew 2 dense zigzag seams along inner side of neck edge. Cut off all extras. Fold neck edge in double, and sew on WS.

Sew on sleeves. Sew seam allowances over cut edges. Weave in all ends on WS.

HAT (boy)

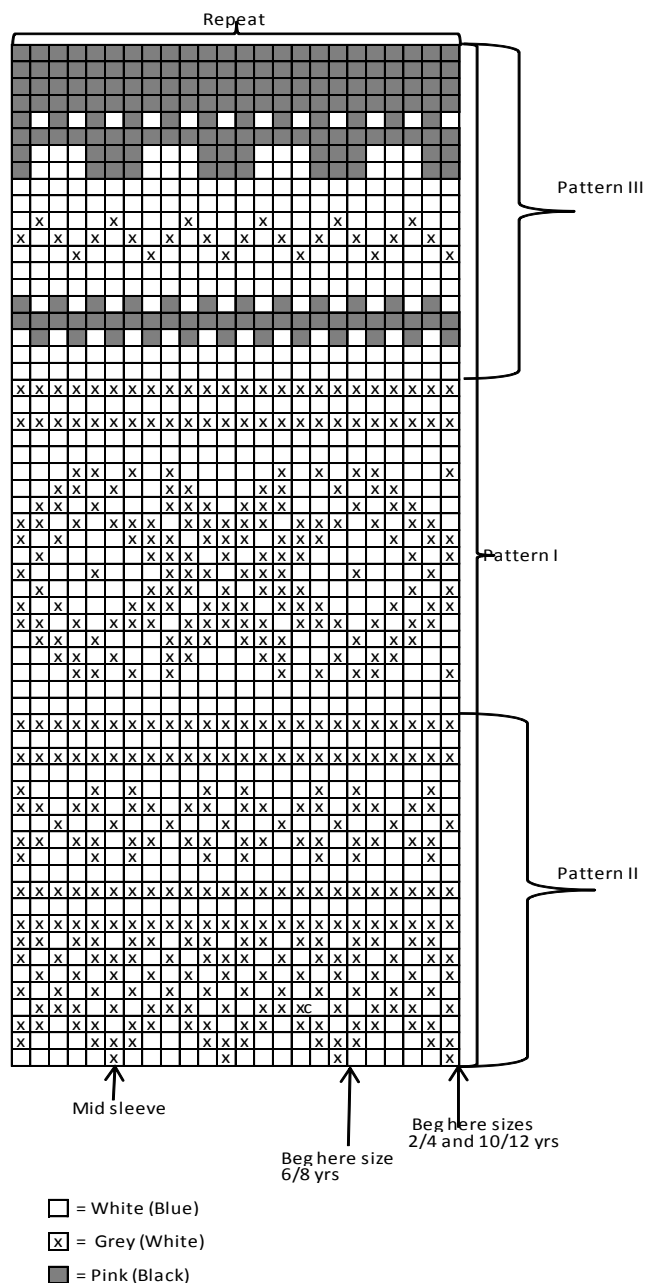
Using needles size 3 mm and white (blue) yarn, cast on 96 – 108 – 114 sts. Work in rnds approx. 6 cm/2.4 in in K1,P1 rib. Change to needles size 3½ mm. Work 1 round stockinette and increase 0-12-6 sts evenly to 96-120-120 sts. Work in patt II, then in patt III, and after that in St st with pink (black) yarn until hat measures 20 – 22 – 24 cm/7.9-8.7-9.4 in. Beg dec for crown: *K4, K2 tog*, rep *-* across the rnd. Work 2 rnds in St st. Rep dec every 3rd rnd with 1 st less between each dec until 34-36-38 sts rem. Knit all sts tog in pairs. Break yarn, thread through rem sts, tighten the yarn slightly, and weave in on WS.

Make a small pom-pom using pink (black) yarn, and fasten on top.

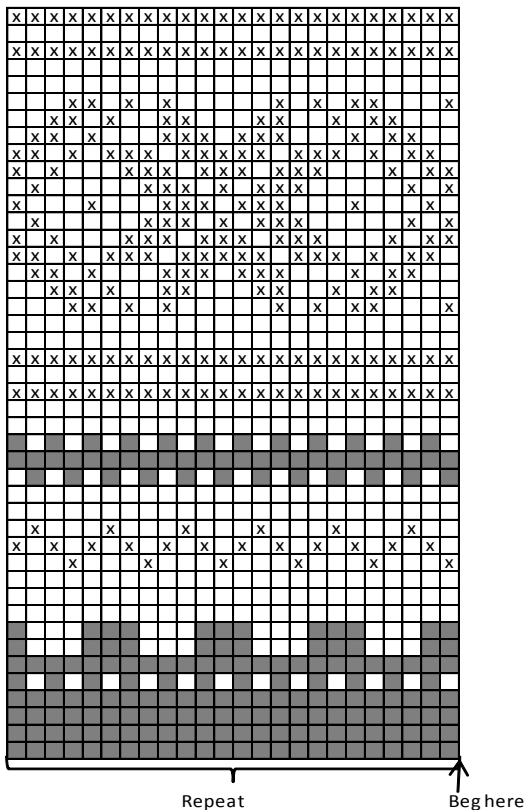
HAT (girl)

Using needles size 3 mm and pink (black) yarn, cast on 96 – 108 – 120 sts. Work in rnds approx. 4 – 4 – 5 cm/1.6-1.6-2 in K1,P1 rib. Change to needles size 3½ mm. Work 1 round stockinette and increase 0-12-0 sts evenly to 96-120-120 sts. Work in patt A, and after that in St st with white (blue) yarn until hat measures 20 – 22 – 24 cm/7.9-8.7-9.4 in. Dec for crown: *K4, K2tog*, rep *-* across the rnd. Work 2 rnds in St st. Rep dec every 3rd rnd with 1 st between each dec until 32-36-40 sts rem. Knit all sts tog in pairs. Break yarn, thread through rem sts, tighten the yarn slightly, and weave in on WS.

Make a small pom-pom with white (blue) yarn, and fasten it on top.



Pattern A



Viking Merino Superfine Sweater

1403-7

| | | | | |
|-----------------------|-------------|-------------|-------------|----------------|
| Size: | S | M | L | XL |
| Bust : | 94 | 104 | 115 | 125 cm |
| | 37 | 41 | 45.3 | 49.2 in |
| Length: | 65 | 66 | 67 | 68 cm |
| | 25.6 | 26 | 26.4 | 26.8 in |
| Sleeve length: | 48 | 49 | 50 | 51 cm |
| | 18.9 | 19.3 | 19.7 | 20.1 in |

ALTERNATIVE YARNS: Viking Merino Superfine (100% Merino Wool-Superfine), Viking Superwash (100 % wool, superwash), Viking Alpaca Sport (30% alpaca, 40 % merino wool, 30% nylon), Viking Sportsragg (60% wool, 20% nylon, 20% acrylic), Viking Sportsgarn (100% wool), 50 g ball

White, 600 (Black, 603) : 12 – 13 – 14 – 14 balls
 Black, 603 (White, 600) : 2 – 2 – 2 – 3 balls
 Red, 650 : 1 – 1 – 1 – 2 balls
 + one ball of basic clr for hat

Circular needle and double pointed needles size 3 and 3 ½ mm – US 2 or 3 and 4 – UK/Canadian 11 and 10 or 9

Gauge: 23 sts = approx. 10 cm/4 in over St st using needles size 3½ mm. **Check your gauge to ensure success.**

TIP! When working in a patt with 2 clrs, it's important to maintain the order of yarns over your finger. Always hold the darker clr in front throughout the whole project.

Note! Instruction contains neck shaping, worked back and forth. If you wish to work in rnds, and cut the sts afterwards, see instruction below.

Using needles size 3 mm and white (black) yarn, cast on 200 – 220 – 240 – 264 sts. Work in rnds approx. 6 – 6 – 7 – 7 cm/2.4-2.4-2.8-2.8 in in K1,P1 rib. Change to needles size 3 ½ mm. Work in St st, and inc evenly across 1st rnd number of sts to be 216 – 240 – 264 – 288 sts. Place markers each side, 109 – 121 – 133 – 145 sts for front, and 107 – 119 – 131 – 143 sts for back. When work measures approx. 41-42-43-44 cm/16.1-16.3-16.9-17.3 in, work in patt I as charted. Slip 17 – 19 – 19 – 21 mid front sts on holder where arrow points out. Cont working back and forth. Bind off at each edge every 2nd row 1x5 – 5 – 5 – 6 sts, 1x2 sts and 3 – 4 – 4 – 4x1 st. When patt I is ready, cont working in St st with red yarn until work measures 65 – 66 – 67 – 68 cm/25.6-26-26.4-26.8 in.

Sleeves: Using needles size 3 mm and white (black) yarn, cast on 44 – 48 – 48 – 50 sts. Work in rnds approx. 6 – 6 – 7 – 7 cm/2.4-2.4-2.8-2.8 in in K1,P1 rib. Change to needles size 3 ½ mm. Work in St st, and inc evenly across 1st rnd number of sts to be 57 – 59 – 59 – 61 sts. Place a maker beg of rnd (= mid under sleeve). Inc 1 st both sides of the marker approx. every 1 ½ – 1 ½ – 1 – 1 cm/0.6-0.6-0.4-0.4 in. When sleeve measures approx. 32 – 33 – 34 – 35 cm/12.6-13-13.4-13.8 in, work in patt II, then in patt III, and after that in St st with red yarn until there is 107-111 – 115 – 121 sts on a rnd, and sleeve measures approx. 48 – 49 – 50 – 51 cm/18.9-19.3-19.7-20.1 in (or as desired). Turn work inside out, and work 5 rnds in St st. Bind off.

Finishing: Dampen pieces slightly from WS. Sew 2 dense zigzag seams around armholes. Cut open between the seams. Sew normal zigzag over cut edges. Join shoulder seams, 34 – 38 – 44 – 48 sts for each shoulder

Neck band: Using needles size 3 and white (black) yarn, and pick or knit up approx. 92 – 100 – 100 – 108 sts along neck edge. Work 1 rnd in St st, and cont working in K1,P1 rib until neck band measures 7 – 7 – 7 – 7 cm/2.8-2.8-2.8-2.8 in. Bind off rather loosely in rib. Fold neck band in double, and sew on WS.

Cutting open neck edge: Sew a curving marker thread for neck edge, approx. 6 – 7 – 7 – 7 cm/2.4-2.8-2.8-2.8 in below upper edge. Pick up with white (black) yarn approx. 53-57-57-61 sts along the marked line (check that patt is same on each side of the neck edge) + sts from back = 92 – 100 – 100 – 108 sts. Work 1 rnd in St st, and cont working in K1,P1 rib until neck band measures 7 – 7 – 7 – 7 cm/2.8-2.8-2.8-2.8 in. Bind off rather loosely in rib. Sew 2 dense zigzag seams along inner side of neck edge. Cut off all extras. Sew normal zigzag over cut edges. Fold neck band in double, and sew on WS.

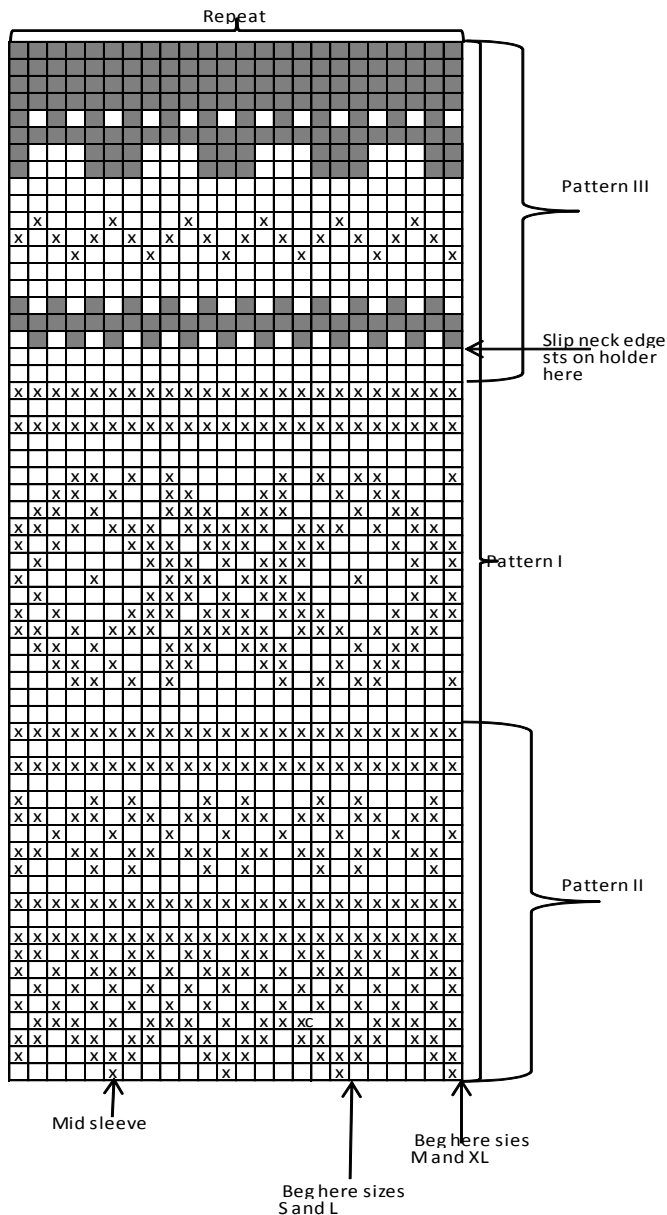
Sew on sleeves. Sew seam allowances over cut edges. Weave in all ends on WS.

HAT

Using needles size 3 mm and black (white) yarn, cast on 108-108-120-120 sts. Work in rnds approx. 10 – 11 – 11 – 12 cm/4-4.3-4.3-4.7 in in K1,P1 rib. Change to needles size 3 ½ mm. Work in patt II, then in patt III, and after that cont working in St st with red yarn until hat measures 24 – 24 – 25 – 25 cm/9.4-9.4-9.8-9.8 in. Dec for crown: *K4, K2tog*, rep *-.* across the rnd. Work 2 rnds in St st. Rep dec every 3rd rnd with 1 st less between each dec until 36-36-40-40 sts rem. Knit all sts tog in pairs. Break yarn, thread through rem sts, tighten the yarn slightly, and weave in on WS.

Make a small pom-pom using red yarn, and fasten it on top.

PATTERN FOR SWEATER AND HAT



- = White (Black)
- ⊗ = Black (White)
- = Red

Viking Merino Superfine Cardigan 1403-8

| | | | | |
|-----------------------|-------------|-------------|-------------|----------------|
| Size: | S | M | L | XL |
| Chest : | 99 | 110 | 120 | 130 cm |
| | 39 | 43.3 | 47.2 | 51.2 in |
| Length: | 66 | 67 | 68 | 70 cm |
| | 26 | 26.4 | 26.8 | 27.6 in |
| Sleeve length: | 48 | 49 | 50 | 52 cm |
| | 18.9 | 19.3 | 19.7 | 20.5 in |

ALTERNATIVE YARNS: Viking Merino Superfine (100% Merino Wool-Superfine), Viking Superwash (100 % wool, superwash), Viking Alpaca Sport (30% alpaca, 40 % merino wool, 30% nylon), Viking Sportsragg (60% wool, 20% nylon, 20% acrylic), Viking Sportsgarn (100% wool), 50 g ball

Grey, 615 : 10 – 10 – 11 – 11 balls
 White, 600 : 6 – 6 – 7 – 7 balls

Circular needle and double pointed needles size 3 and 3 ½ mm – US 2 or 3 and 4 - UK/Canadian 11 and 10 or 9 + 7-7-8-8 buttons

Gauge: 23 sts = approx. 10 cm/4 in over St st using needles size 3½ mm. **Check your gauge to ensure success.**

TIP! When working in a patt with 2 clrs, it's important to maintain order of yarns over your finger. Always hold the darker clr in front throughout the whole project.

Note! Instruction contains neck shaping, worked back and forth. If you wish to work in rnds, and cut the sts afterwards, see instruction below.

Using needles size 3 mm and grey yarn, cast on 225 – 249 – 273 – 297 sts. Work back and forth in K1,P1 rib. When work measures approx. 3 cm/1.2 in, make a buttonhole to left edge for man, right edge for woman. Make buttonholes on RS over 3 sts, inside 3 sts from front edge (Buttonhole: Bind off 3 sts. Next row: Cast on 3 sts over the bound-off sts. When rib measures approx. 6 – 6 – 7 – 7 cm/2.4-2.4-2.8-2.8 in, slip first and last 12 sts on holder (= sts for front bands). Change to needles size 3 ½ mm. Work 1 row in St st, and inc evenly across number of sts to be 217 – 241 – 265 – 289 sts (front band sts not incl). Cast on 4 new sts to the end of the row (= not incl in the number of sts, to be cut open later on). Purl these new sts every rnd. Place markers each side, 53 – 59 – 65 – 71 sts for both fronts, and 111 – 123 – 135 – 147 sts for back. Work in patt I, cont in patt II until work measures approx. 47 – 48 – 48 – 50 cm/18.5-18.9-18.9-19.7 in (end with a complete grey stripe). Work in patt III, then in patt IV, **but** when work measures approx. 60 – 60 – 61 – 62 cm/23.6-23.6-24-24.4 in, bind off 22 – 24 – 24 – 24 mid front sts for neck edge (incl 4 purl sts), and cont working back and forth. Bind off at each edge every 2nd row 3x2 sts, and 2 – 2 – 3 – 3x1 st. Rep patt IV until work measures approx. 66 – 67 – 68 – 70 cm/26-26.4-26.8-27.6 in.

Sleeves: Using needles size 3 mm and grey yarn, cast on 48 – 52 – 56 sts. Work in rnds approx. 5 – 5 – 6 – 6 cm/2-2-2.4-2.4 in K1,P1 rib. Change to needles size 3 ½ mm. Work 1 rnd in St st, and inc evenly across number of sts to be 53 – 57 – 59 – 65 sts. Place a marker beg of rnd (= mid under sleeve). Work in patt I, and then in patt II. Inc same time 1 st both sides of the marker approx. every 1 ½ – 1 ½ – 1 – 1 ½ cm/0.6-0.6-0.4-0.6 in. When sleeve measures approx. 34-35-36-38 cm/13.4-13.8-14.2-15 in, work in patt III, then in patt IV until there is 111 – 115 – 121 – 125 sts on a rnd, and sleeve measures approx. 48 – 49 – 50 – 52 cm/18.9-19.3-19.7-20.5 in. Turn work inside out, and work 5 rnds in St st for seam allowance. Bind off.

Finishing: Dampen pieces slightly from WS. Sew 2 dense zigzag seams around armholes. Cut open between seams. Sew normal zigzag over cut edges. Join shoulder seams, 36 – 41 – 46 – 51 sts for each shoulder.

Front bands: Slip 12 sts without buttonholes over needles size 3 mm. Cast on 4 new sts to the side facing the body. Work St st over new sts (= seam allowance). Cont working until front band measures approx. 6 – 7 – 7 – 8 cm/2.4-2.8-2.8-3.1 in less than total length (it's important that front band doesn't turn out to be too long). Bind off seam allowance sts, and leave rem 12 rib sts on holder. Work same for the other front band, but make 7 – 7 – 8 – 8 buttonholes evenly spaced apart. First buttonhole is already made, and last one will be made mid neck band.

Neck band: Using needles size 3 mm and grey yarn, pick or knit up sts from neck edge as foll: Beg from right front edge, slip sts from holder over needle, pick up approx. 20 – 21 – 23 – 25 sts along neck edge, 39 – 41 – 43 – 45 sts from back, 20 – 21 – 23 –

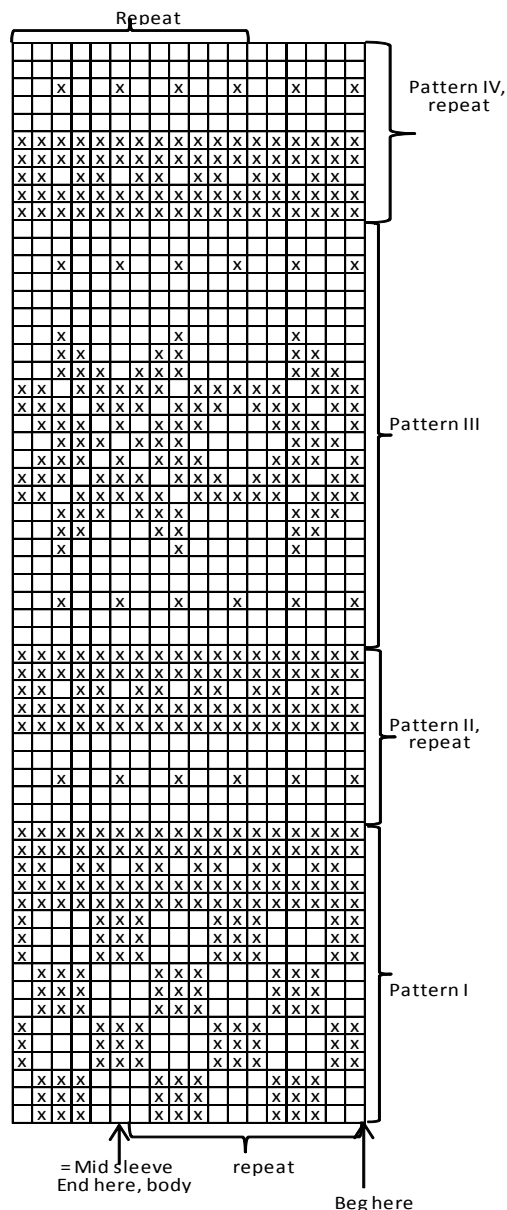
25 sts from left front neck edge, and slip front band sts from holder over needle = approx. 103 – 107 – 113 – 119 sts on a row. Work 1 row in St st (rib over front band sts). Cont working back and forth in K1,P1 rib (don't forget to make a buttonhole). When neck band measures approx. 3 – 3 ½ – 3 ½ – 4 cm/1.2-1.4-1.4-1.6 in, bind off first and last 12 sts in rib. Cont working back and forth over rem sts until neck band measures 6 – 7 – 7 – 8 cm/2.4-2.8-2.8-3.1 in. Bind off rather loosely in rib. Fold neck band in double, and sew on WS.

Cutting the neck edge: Sew a curving marker thread for neck edge, approx. 6 – 7 – 7 – 8 cm/2.4-2.8-2.8-3.1 in. Pick up with grey yarn approx. 20 – 21 – 23 – 25 sts along the marked line, both sides of the mid sts (= cut open, check that patt is same each side) + sts from back and front bands = 103 – 107 – 113 – 119 sts. Work 1 row in St st (rib over front band sts). Cont working back and forth in K1,P1 rib until neck band measures approx. 3 – 3 ½ – 3 ½ – 4 cm/1.2-1.4-1.4-1.6 in. Bind off first and last 12 sts in rib. Cont working back and forth over rem sts until neck band measures 6 – 7 – 7 – 8 cm/2.4-2.8-2.8-3.1 in. Bind off rather loosely in rib.

Sew 2 dense zigzag seams along inner side of neck edge. Cut off all extras. Sew normal zigzag over cut edges. Fold neck band in double over cut edge, and sew on WS.

Sew on sleeves. Sew seam allowances over cut edges. Weave in all ends on WS. Sew on buttons.

KNEELENGTH SOCKS – SEE 1403-12



□ = White

☒ = Grey

Viking Merino Superfine Cardigan 1403-8

Size: S – M – L – XL

Chest : 99 – 110 – 120 – 130 cm

39 – 43.3 – 47.2 – 51.2 in

Length: 66 – 67 – 68 – 70 cm

26- 26.4 – 26.8 – 27.6 in

Sleeve length: 48 – 49 – 50 – 52 cm

18.9 – 19.3 – 19.7 – 20.5 in

ALTERNATIVE YARNS: Viking Merino Superfine (100% Merino Wool-Superfine), Viking Superwash (100 % wool, superwash), Viking Alpaca Sport (30% alpaca, 40 % merino wool, 30% nylon), Viking Sportsragg (60% wool, 20% nylon, 20% acrylic), Viking Sportsgarn (100% wool), 50 g ball

Grey, 615 : 10 – 10 – 11 – 11 balls

White, 600 : 6 – 6 – 7 – 7 balls

Circular needle and double pointed needles size 3 and 3 ½ mm – US 2 or 3 and 4 - UK/Canadian 11 and 10 or 9

+ 7-7-8-8 buttons

Gauge: 23 sts = approx. 10 cm/4 in over St st using needles size 3½ mm. **Check your gauge to ensure success.**

TIP! When working in a patt with 2 clr, it's important to maintain order of yarns over your finger. Always hold the darker clr in front throughout the whole project.

Note! Instruction contains neck shaping, worked back and forth. If you wish to work in rnds, and cut the sts afterwards, see instruction below.

Using needles size 3 mm and grey yarn, cast on 225 – 249 – 273 – 297 sts. Work back and forth in K1,P1 rib. When work measures approx. 3 cm/1.2 in, make a buttonhole to left edge for man, right edge for woman. Make buttonholes on RS over 3 sts, inside 3 sts from front edge (Buttonhole: Bind off 3 sts. Next row: Cast on 3 sts over the bound-off sts. When rib measures approx. 6 – 6 – 7 – 7 cm/2.4-2.4-2.8-2.8 in, slip first and last 12 sts on holder (= sts for front bands). Change to needles size 3½ mm. Work 1 row in St st, and inc evenly across number of sts to be 217 – 241 – 265 – 289 sts (front band sts not incl). Cast on 4 new sts to the end of the row (= not incl in the number of sts, to be cut open later on). Purl these new sts every rnd. Place markers each side, 53 – 59 – 65 – 71 sts for both fronts, and 111 – 123 – 135 – 147 sts for back. Work in patt I, cont in patt II until work measures approx. 47 – 48 – 48 – 50 cm/18.5-18.9-18.9-19.7 in (end with a complete grey stripe). Work in patt III, then in patt IV, **but** when work measures approx. 60 – 60 – 61 – 62 cm/23.6-23.6-24-24.4 in, bind off 22 – 24 – 24 – 24 mid front sts for neck edge (incl 4 purl sts), and cont working back and forth. Bind off at each edge every 2nd row 3x2 sts, and 2 – 2 – 3 – 3x1 st. Rep patt IV until work measures approx. 66 – 67 – 68 – 70 cm/26-26.4-26.8-27.6 in.

Sleeves: Using needles size 3 mm and grey yarn, cast on 48 – 52 – 52 – 56 sts. Work in rnds approx. 5 – 5 – 6 – 6 cm/2-2-2.4-2.4 in K1,P1 rib. Change to needles size 3½ mm. Work 1 rnd in St st, and inc evenly across number of sts to be 53 – 57 – 59 – 65 sts. Place a marker beg of rnd (= mid under sleeve). Work in patt I, and then in patt II. Inc same time 1 st both sides of the marker approx. every 1½ – 1½ – 1 – 1½ cm/0.6-0.6-0.4-0.6 in. When sleeve measures approx. 34-35-36-38 cm/13.4-13.8-14.2-15 in, work in patt III, then in patt IV until there is 111 – 115 – 121 – 125 sts on a rnd, and sleeve measures approx. 48 – 49 – 50 – 52 cm/18.9-19.3-19.7-20.5 in. Turn work inside out, and work 5 rnds in St st for seam allowance. Bind off.

Finishing: Dampen pieces slightly from WS. Sew 2 dense zigzag seams around armholes. Cut open between seams. Sew normal zigzag over cut edges. Join shoulder seams, 36 – 41 – 46 – 51 sts for each shoulder.

Front bands: Slip 12 sts without buttonholes over needles size 3 mm. Cast on 4 new sts to the side facing the body. Work St st over new sts (= seam allowance). Cont working until front band measures approx. 6 – 7 – 7 – 8 cm/2.4-2.8-2.8-3.1 in less than total length (it's important that front band doesn't turn out to be too long). Bind off seam allowance sts, and leave rem 12 rib sts on holder. Work same for the other front band, but make 7 – 7 – 8 – 8 buttonholes evenly spaced apart. First buttonhole is already made, and last one will be made mid neck band.

Neck band: Using needles size 3 mm and grey yarn, pick or knit up sts from neck edge as foll: Beg from right front edge, slip sts from holder over needle, pick up approx. 20 – 21 – 23 – 25 sts along neck edge, 39 – 41 – 43 – 45 sts from back, 20 – 21 – 23 – 25 sts from left front neck edge, and slip front band sts from holder over needle = approx. 103 – 107 – 113 – 119 sts on a row. Work 1 row in St st (rib over front band sts). Cont working back

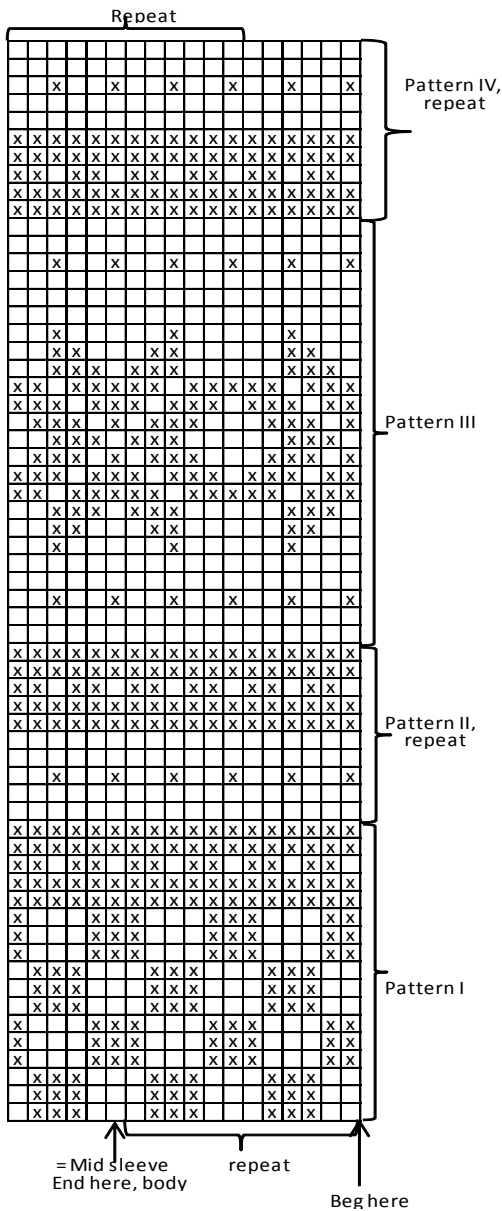
and forth in K1,P1 rib (don't forget to make a buttonhole). When neck band measures approx. 3 – 3½ – 3½ – 4 cm/1.2-1.4-1.4-1.6 in, bind off first and last 12 sts in rib. Cont working back and forth over rem sts until neck band measures 6 – 7 – 7 – 8 cm/2.4-2.8-2.8-3.1 in. Bind off rather loosely in rib. Fold neck band in double, and sew on WS.

Cutting the neck edge: Sew a curving marker thread for neck edge, approx. 6 – 7 – 7 – 8 cm/2.4-2.8-2.8-3.1 in. Pick up with grey yarn approx. 20 – 21 – 23 – 25 sts along the marked line, both sides of the mid sts (= cut open, check that patt is same each side) + sts from back and front bands = 103 – 107 – 113 – 119 sts. Work 1 row in St st (rib over front band sts). Cont working back and forth in K1,P1 rib until neck band measures approx. 3 – 3½ – 3½ – 4 cm/1.2-1.4-1.4-1.6 in. Bind off first and last 12 sts in rib. Cont working back and forth over rem sts until neck band measures 6 – 7 – 7 – 8 cm/2.4-2.8-2.8-3.1 in. Bind off rather loosely in rib.

Sew 2 dense zigzag seams along inner side of neck edge. Cut off all extras. Sew normal zigzag over cut edges. Fold neck band in double over cut edge, and sew on WS.

Sew on sleeves. Sew seam allowances over cut edges. Weave in all ends on WS. Sew on buttons.

KNEELength SOCKS – SEE 1403-12



□ = White
 ☒ = Grey

Viking Merino Superfine Cardigan and hat 1403-9

Size: 2 - 4 - 6 - 8 - 10 - 12 yrs
Chest: 62 - 67 - 73 - 78 - 82 - 88 cm
 24.4 - 26.4 - 28.7 - 30.7 - 32.3 - 34.6 in
Length: 36 - 40 - 45 - 50 - 54 - 58 cm
 14.2 - 15.7 - 17.7 - 19.7 - 21.3 - 22.8 in
Sleeve length: 28 - 31 - 34 - 38 - 42 - 45 cm
 11 - 12.2 - 13.4 - 15 - 16.5 - 17.7 in

ALTERNATIVE YARNS: Viking Merino Superfine (100% Merino Wool-Superfine), Viking Superwash (100% wool, superwash), Viking Alpaca Sport (30% alpaca, 40% merino wool, 30% nylon), Viking Sportsragg (60% wool, 20% nylon, 20% acrylic), Viking Sportsgarn (100% wool), 50 g ball

Cardigan

Navy Blue, 626 : 4 - 5 - 5 - 6 - 6 - 7 balls
 White, 600 : 3 - 3 - 4 - 4 - 5 - 5 balls

Hat

Navy Blue, 626 : 1 - 1 - 1 - 1 - 1 - 1 ball

White, 600 : 1 - 1 - 1 - 1 - 1 - 1 ball
 Circular needle and double pointed needles size 3 and 3 ½ mm – US 2 or 3 and 4 – UK/Canadian 11 and 10 or 9
 + 6-6-6-7-7 buttons

Gauge: 23 sts = approx. 10 cm/4 in over St st using needles size 3½ mm. **Check your gauge to ensure success.**

TIP! When working in a patt with 2 clrs, it's important to maintain the order of yarns over your finger. Always hold the darker clr in front throughout the whole project.

Note! Instruction contains neck shaping, worked back and forth. If you wish to work in rnds, and the sts open afterwards, see instruction below.

Using needles size 3 mm and navy blue yarn, cast on 137 - 149 - 161 - 173 - 185 - 197 sts. Work back and forth in K1,P1 rib. When work measures approx. 2 cm/0.8 in, make 1 buttonhole, at left edge for boy, right edge for girl. Make buttonholes on RS over 3 sts, inside 3 sts from front edge (Buttonhole: Bind off 3 sts. Next row: Cast on 3 sts over the bound-off sts). When rib measures approx. 4 - 4 - 4 - 5 - 5 - 5 cm/1.6-1.6-1.6-2-2 in, slip first and last 10 sts on holders (= sts for front bands). Change to needles size 3½ mm. Work 1 row in St st, and inc evenly across number of sts to be 133 - 145 - 157 - 169 - 181 - 193 sts (front band sts are not incl). Cast on 4 new sts to the end of the row (= not incl in the number of sts, to be cut open later on). Place markers each side, 32 - 35 - 38 - 41 - 44 - 47 sts for both fronts, and 69 - 75 - 81 - 87 - 93 - 99 sts for back. Work in patt I, and then in patt II until work measures approx. 20 - 24 - 29 - 34 - 38 - 42 cm/7.9-9.4-11.4-13.4-15-16.3 in (end with a complete navy blue stripe). Work in patt III, then in patt IV, **but** when work measures approx. 32 - 35 - 40 - 45 - 48 - 52 cm/12.6-13.8-15.7-17.7-18.9-20.5 in, bind off 18 - 18 - 20 - 20 - 22 - 22 mid front sts for neck edge (incl 4 purl-sts), and cont working back and forth. Bind off at each edge every 2nd row 2x2 sts, 2 - 3 - 3 - 3 - 3 - 3x1 st. Rep patt IV until work measures 36 - 40 - 45 - 50 - 54 - 58 cm/14.2-15.7-17.7-19.7-21.3-22.8 in.

Sleeves

Using needles size 3 mm and navy blue yarn, cast on 38 - 40 - 42 - 42 - 44 - 46 sts. Work in rnds approx. 4 - 4 - 4 - 5 - 5 - 5 cm/1.6-1.6-1.6-2-2-2 in in K1,P1 rib. Change to needles size 3 ½ mm. Work 1 rnd in St st, and inc evenly across number of sts to be 47 - 49 - 51 - 55 - 59 - 61 sts. Place a marker beg of rnd (= mid under sleeve). Work in patt I, then in patt II. Inc same time 1 st both sides of the marker approx. every 2 ½ - 2 ½ - 2 ½ - 3 - 3 - 3 cm/1-1-1-1.2-1.2-1.2 in. When sleeve measures approx. 19 - 22 - 25 - 29 - 33 - 36 cm/7.5-8.7-9.8-11.4-13-14.2 in (end with a complete navy blue stripe), work in patt III. There is now 65 - 69 - 73 - 77 - 83 - 87 sts on a rnd, and sleeve measures approx. 28 - 31 - 34 - 38 - 42 - 45 cm/11-12.2-13.4-15-16.5-17.7 in. Turn work inside out, and work 5 rnds in St st. Bind off.

Finishing

Dampen pieces slightly from WS. Sew 2 dense zigzag seams around armholes and mid front. Cut open between seams. Sew normal zigzag over cut edges. Join shoulder seams, 19 - 21 - 23 - 26 - 28 - 31 sts for each shoulder.

Front bands: Slip 10 sts without buttonholes over needles size 3 mm. Cast on 4 new sts to the side facing body. Work St st over new sts (= seam allowance). Cont working until front band measures approx. 4-5-5-5-6-6 cm/1.6-2-2-2-2.4-2.4 in less than total length (it's important that front band doesn't turn out to be too long). Bind off seam allowance sts, and slip rem 10 rib sts over holder. Work same for the other front band, but make 6 - 6 - 6 - 7 - 7 - 7 buttonholes evenly spaced apart. First buttonhole

is already made, and last one will be made on last row before neck band.

Neck band: Using needles size 3 mm and navy blue yarn, pick or knit up sts from neck edge as foll: Beg from right front edge, slip sts from holder over needle, pick up approx. 18 – 19 – 21 – 22 – 22 – 23 sts along neck edge, 31 – 33 – 35 – 35 – 37 – 37 sts from back, 18 – 19 – 21 – 22 – 22 – 23 sts from left front neck edge, and slip front band sts from holder over needle = approx. 87 – 91 – 97 – 99 – 101 – 103 sts on a row. Work 1 row in St st (rib over front band sts). Cont working back and forth in K1,P1 rib. When neck band measures approx. 2 ½ – 2 ½ – 3 – 3 – 3 ½ – 3 ½ cm/1-1-1.2-1.2-1.4-1.4 in, bind off first and last 10 sts in rib. Cont working back and forth over rem sts until neck band measures 5 – 5 – 6 – 6 – 7 – 7 cm/2-2-2.4-2.4-2.8-2.8 in. Bind off rather loosely in rib. Fold neck band in double, and sew on WS.

Cutting open neck edge: Sew a curving marker thread for neck edge, approx. 4 – 5 – 5 – 5 – 6 – 6 cm/1.6-2-2-2-2.4-2.4 in below upper edge. Knit up with navy blue yarn approx. 18 – 19 – 21 – 22 – 22 – 23 sts along the marked line, both sides of the mid sts (= cut open, check that patt is same on each side) + sts from back and front bands = 87 – 91 – 97 – 99 – 101 – 103 sts. Work 1 row in St st (rib over front band sts). Cont working back and forth in K1,P1 rib. When neck band measures approx. 2 ½ – 2 ½ – 3 – 3 – 3 ½ – 3 ½ cm/1-1-1.2-1.2-1.4-1.4 in, bind off first and last 10 sts in rib. Cont working back and forth over rem sts until neck band measures 5 – 5 – 6 – 6 – 7 – 7 cm/2-2-2.4-2.4-2.8-2.8 in. Bind off rather loosely in rib.

Sew 2 dense zigzag seams along inner side of neck edge. Cut off all extras. Sew normal zigzag over cut edges. Fold neck band in double over cut edges, and sew on WS.

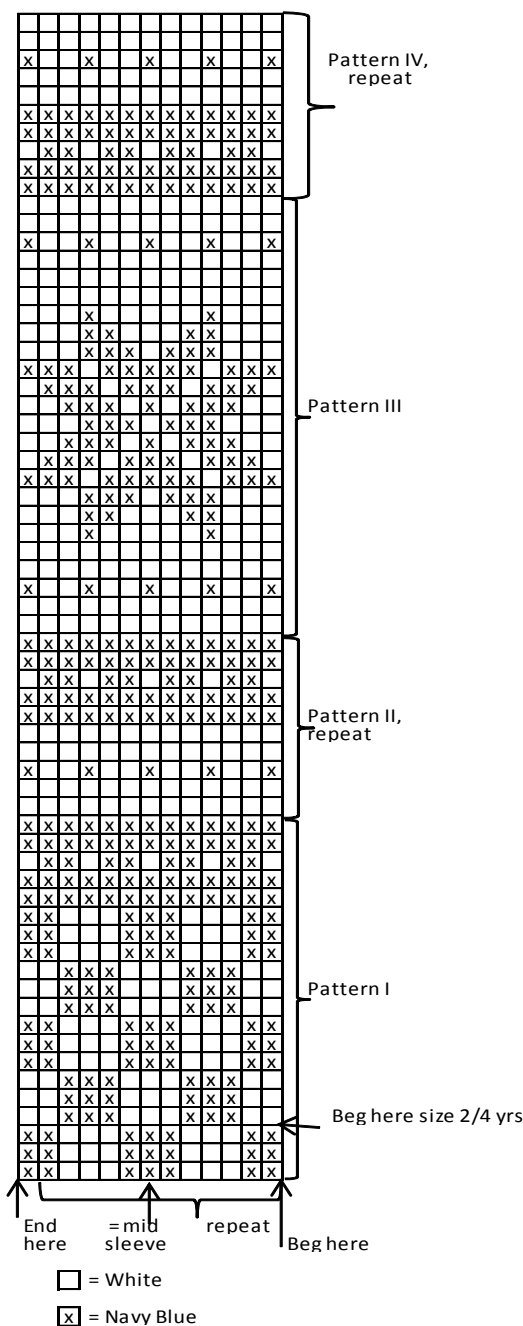
Sew on sleeves. Sew seam allowances over cut edges. Weave in all ends on WS. Sew on buttons.

HAT (2/4 – 6/8 – 10/12 yrs)

Using needles size 3 mm and navy blue yarn, cast on 92 – 102 – 114 sts. Work in rnds approx. 3 cm/1.2 in in K1,P1 rib. Change to needles size 3 ½ mm. Work 1 rnd in St st, and inc evenly across number of sts to be 96 – 108 – 120 sts. Work in patt III, then in patt IV until hat measures approx. 20 – 22 – 24 cm/7.9-8.7-9.4 in. Dec for crown: Knit all sts tog in pairs. Work 1 rnd in St st. Rep dec until 12 – 14 – 15 sts rem on a rnd. Break yarn, thread through rem sts, tighten yarn slightly, and weave in on WS.

Make a small pom-pom using navy blue yarn, and fasten it on top.

PATTERN FOR CARDIGAN AND HAT



Viking Merino Superfine Sweaters and knee length socks 1403-10 and 11

| | |
|----------------|--|
| Size: | 2/4 – 6/8 – 10/12 yrs |
| Chest: | 63 – 73 – 83 cm 24.8 – 28.7 – 32.7 in |
| Length: | 38 – 48 – 56 cm 15 – 18.9 – 22 in |
| Sleeve length: | 30 – 36 – 44 cm 11.8 – 14.2 – 17.3 in |

ALTERNATIVE YARNS: Viking Merino Superfine (100% Merino Wool-Superfine), Viking Superwash (100 % wool, superwash), Viking Alpaca Sport (30% alpaca, 40 % merino wool, 30% nylon), Viking Sportsragg (60% wool, 20% nylon, 20% acrylic), Viking Sportsgarn (100% wool), 50 g ball

Sweater

Red, 650 : 5 – 6 – 6 balls

White, 600 : 3 – 3 – 4 balls

Knee length socks

Red, 650 : 2 – 2 – 3 balls

White, 600 : 1 – 1 – 2 balls

Circular needle and double pointed needles size 3 and 3 ½ mm – US – UK/Canadian

Gauge: 23 sts = approx. 10 cm/4 in over St st using needles size 3 ½ mm. **Check your gauge to ensure success.**

TIP! When working in a patt with 2 clr, it's important to maintain order of yarns over your finger. Always hold the darker clr in front throughout the whole project.

Note! Instruction contains neck edge shaping, worked back and forth. If you wish to work in rnds, and cut the sts afterwards, see instruction below.

Using needles size 3 mm and red yarn, cast on 128 – 152 – 176 sts. Work in rnds approx. 4 – 5 – 5 cm/1.6-2-2 in in K1,P1 rib. Change to needles size 3 ½ mm. Work 1 rnd in St st, and inc evenly across number of sts to be 144 – 168 – 192 sts. Place markers each side, 73 – 85 – 97 sts for front, and 71 – 83 – 95 sts for back. Work in patt I, and then in patt II until work measures approx. 22 – 32 – 40 cm/8.7-12.6-15.7 in (end with a complete red stripe). Work in patt III, and then in patt IV, **but** when work measures approx. 33 – 43 – 50 cm/13-16.9-19.7 in, slip 13 – 15 – 17 mid front sts on holder for neck edge. Cont working back and forth. Bind off at each edge every 2nd rnd 1x5 sts, 1x2 sts, and 3x1 st. Rep patt IV until work measures 38 – 48 – 56 cm/15-18.9-22 in.

Sleeves: Using needles size 3 mm and red yarn, cast on 38 – 40 – 42 sts. Work in rnds approx. 4 – 5 – 5 cm/1.6-2-2 in K1,P1 rib. Change to needles size 3 ½ mm. Work 1 rnd in St st, and inc evenly across number of sts to be 45 – 49 – 55 sts. Place a marker beg of rnd (= mid under sleeve). Work in patt I, and then in patt II. Inc same time 1 st both sides of the marker approx. every 2 ½ – 2 ½ – 2 ½ cm/1-1-1 in. When sleeve measures approx. 21 – 27 – 35 cm/8.3-10.6-13.8 in (end with a complete red stripe), work in patt III. There is now 65 – 73 – 83 sts on a rnd, and sleeve measures approx. 30 – 36 – 44 cm/11.8-14.2-17.3 in. Turn work inside out, and work 5 rnds in St st for seam allowance. Bind off.

Finishing: Dampen work slightly from WS. Sew 2 dense zigzag seams around armholes. Cut open between seams. Sew normal zigzag over cut edges. Join shoulder seams, 18 – 23 – 28 sts for each shoulder.

Neck band: Using needles size 3 mm and red yarn, pick or knit up approx. 90-96-100 sts around neck edge. Work 1 rnd in St st, and after that in K1,P1 rib until neck band measures 6 – 7 – 8 cm/2.4-2.8-3.1 in. Bind off rather loosely in rib. Fold neck band in double, and sew on WS.

Cutting the neck edge: Sew a curving marker thread for neck edge, approx. 5 – 5 – 6 cm/2-2-2.4 in below the upper edge. Pick up with red yarn approx. 53 – 57 – 59 sts along marked line (check that patt is same on each side of the neck edge) + sts from back = 90-96-100 sts. Work 1 rnd in St st, and cont working in K1,P1 rib until neck band measures 6 – 7 – 8 cm/2.4-2.8-3.1 in. Bind off rather loosely in rib. Sew 2 dense zigzag seams along inner side of neck edge. Cut off all extras. Sew normal zigzag over cut edges. Fold neck band in double over cut edge, and sew on WS.

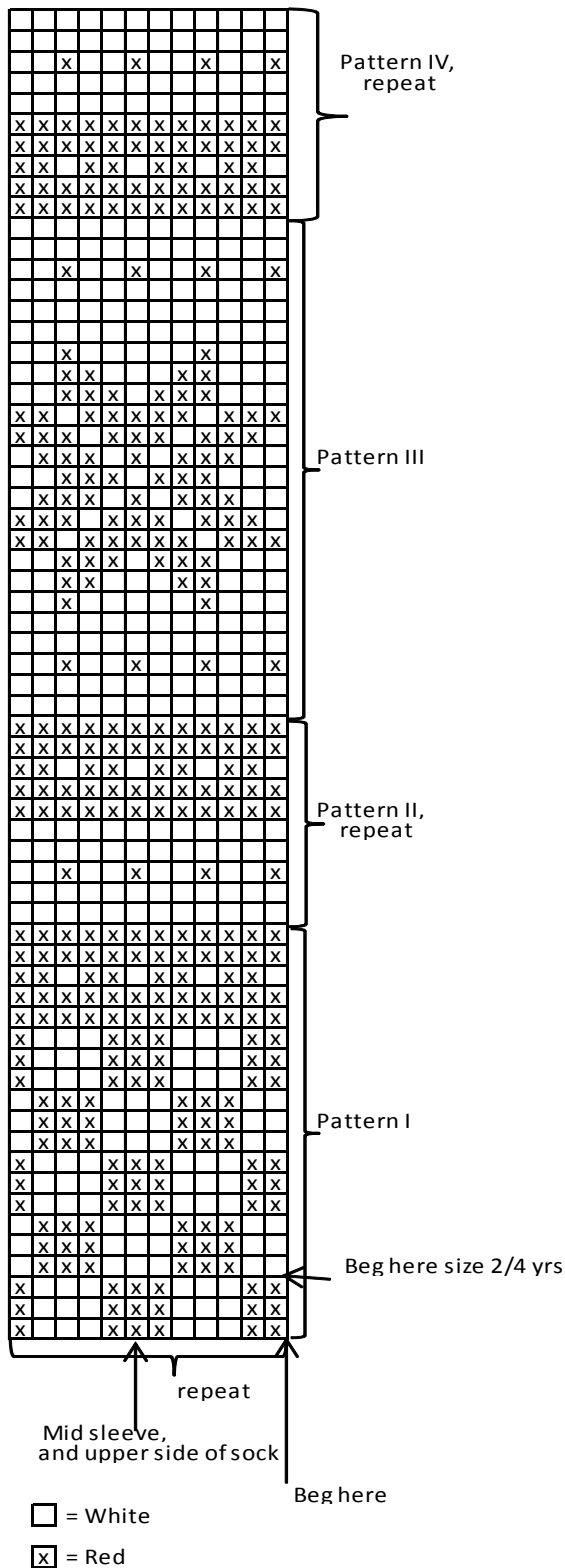
Sew on sleeves. Sew seam allowances over cut edges. Weave in all ends on WS.

Using needles size 3 mm and red yarn, cast on 44 – 50 – 54 sts. Work in rnds approx. 5 – 6 – 6 cm/2-2.4-2.4 in in K1,P1 rib.

Change to needles size 3 ½ mm. Work 1 rnd in St st, and inc evenly across number of sts to be 56 – 60 – 64 sts. Place a marker beg of the rnd (= mid back). Work in patt III, **but** when work measures approx. 8 – 10 – 12 cm/3.1-4-4.7 in, (if you wish to make socks over the knee, work 12 – 14 – 16 cm/4.7-5.5-6.3 in more), dec 1 st both sides of the marker approx. every 2-2- 2 ½ cm/0.8-0.8-1 in. When patt III is ready, work in patt IV until 40 – 44 – 48 sts rem on a rnd, and work measures approx. 25 – 28 – 35 cm/9.8-11-13.8 in (end with a complete white stripe).

Slip 19 – 21 – 23 sts mid front over holder. Work for heel over rem 21 – 23 – 25 sts. Work back and forth 18-20-22 rows in St st. K14 – 16 – 17, turn. Sl first st, P7 – 9 – 9, turn. Sl first st, and work 1 st more each time, until 2 sts rem at each edge. Turn, and knit sts. You have now reached left edge of the heel. Pick up 10 – 11 – 12 sts along each side of the heel. Cont working in rnds with red yarn over all sts. Dec **same time** 1 st every rnd both sides of the sts that were on holder until 40 – 44 – 48 sts rem. When foot measures approx. 14 – 17 – 20 cm/5.5-6.7-7.8 in (or desired length before dec).

Beg dec: Place markers around mid sts on both sides, with same number of sts for both upper part and sole. Dec 1 st both sides of the markers every 2nd rnd 2 times, and then every rnd until 12 sts rem. Break yarn, thread through rem sts, tighten the yarn, and weave in on WS.



Viking Merino Superfine

Sweater, knee length socks and hat

1403-12

Size: S – M – L – XL

Bust: 94 – 104 – 115 – 125 cm
37 – 41 – 45.3 – 49.2 in

Length: 65 – 66 – 67 – 68 cm
25.6 – 26 – 26.4 – 26.8 in

Sleeve length: 48 – 49 – 50 – 51 cm
18.9 – 19.3 – 19.7 – 20.1 in

ALTERNATIVE YARNS: Viking Merino Superfine (100% Merino Wool-Superfine), Viking Superwash (100 % wool, superwash), Viking Alpaca Sport (30% alpaca, 40 % merino wool, 30% nylon), Viking Sportsragg (60% wool, 20% nylon, 20% acrylic), Viking Sportsgarn (100% wool), 50 g ball

Sweater

Light Grey, 613 : 10 – 10 – 11 – 11 balls

White, 600 : 8 – 8 – 9 – 9 balls

+ 1 ball of each clr for hat

Knee length socks

Light Grey, 613 : 3 – 3 – 4 – 4 balls

White, 600 : 2 – 2 – 3 – 3 balls

Circular needle and double pointed needles size 3 and 3 ½ mm – US 2 or 3 and 4 – UK/Canadian 11 and 10 or 9

Gauge: 23 sts = approx. 10 cm/4 in over St st using needles size 3½ mm. **Check your gauge to ensure success.**

TIP! When working in a patt with 2 clrs, it's important to maintain order of yarns over your finger. Always hold the darker clr in front throughout the whole project.

Note! Instruction contains shaping for neck edge, worked back and forth. If you wish to work in rnds, and cut the sts afterwards, see instruction below.

Using needles size 3 mm and light grey yarn, cast on 216 – 240 – 264 – 288 sts. Work in rnds approx. 3 cm/1.2 in in K1,P1 rib. Change to needles size 3½ mm. Place markers each side, 109 – 121 – 133 – 145 sts for front, and 107 – 119 – 131 – 143 sts for back. Work in patt I, and then in patt II until work measures approx. 45 – 46 – 47 – 48 cm/17.7-18.1-18.5-18.9 in (end with light grey stripe), work in patt III as charted, and then in patt IV, **but** when work measures approx. 59 – 60 – 60 – 61 cm/23.2-23.6-23.6-24 in, slip 17 – 19 – 19 – 21 mid front sts over a holder for neck edge. Bind off at each edge every 2nd row 1x5 – 5 – 5 – 6 sts, 1x2 sts, and 3 – 4 – 4 – 4x1 st. Cont working until work measures 65 – 66 – 67 – 68 cm/25.6-26-26.4-26.8 in.

Sleeves: Using needles size 3 mm and light grey yarn, cast on 48 – 52 – 52 – 56 sts. Work in rnds approx. 3 cm/1.2 in in K1,P1 rib. Change to needles size 3½ mm. Work 1 rnd in St st, and inc evenly across number of sts to be 57 – 59 – 59 – 61 sts. Place a marker beg of rnd (= mid under sleeve). Work in patt I, and then in patt II. Inc **same time** 1 st both sides of the marker approx. every 1½ cm/0.6 in (same for all sizes). When sleeve measures approx. 36 – 37 – 38 – 39 cm/14.2-14.6-15-15.4 in, work in patt III, and then in patt IV until there is 107 – 111 – 115 – 121 sts on a rnd, and sleeve measures approx. 48 – 49 – 50 – 51 cm/18.9-19.3-19.7-20.1 in. Turn inside out and work 5 rnds in St st for seam allowance. Bind off.

Finishing: Dampen pieces slightly from WS. Sew 2 dense zigzag seams around armholes. Cut open between seams. Sew

normal zigzag over cut edges. Join shoulder seams, 34 – 38 – 44 – 48 sts for each shoulder.

Neck edge: Using needles size 3 mm and light grey yarn, pick or knit up approx. 100 – 104 – 108 – 112 sts along neck edge. Work 1 rnd in St st, and cont working in K1,P1 rib until neck band measures 7 – 7 – 8 – 8 cm/2.8-2.8-3.1-3.1 in. Bind off rather loosely in rib. Fold neck band in double, and sew on WS.

Cutting the neck edge: Sew a curving marker thread for neck edge, approx. 6 – 6 – 7 – 7 cm/2.4-2.4-2.8-2.8 in below the upper edge. Pick up with light grey yarn approx. 59 – 59 – 63 – 63 sts along marked line (check that patt is same on each side of the neck edge) + sts from back = 100 – 104 – 108 – 112 sts. Work 1 rnd in St st, and cont working in K1,P1 rib until neck band measures 7 – 7 – 8 – 8 cm/2.4-2.4-2.8-2.8 in. Bind off rather loosely in rib. Sew 2 dense zigzag seams along inner side of the neck edge. Cut off all extras. Sew normal zigzag over cut edges. Fold neck band in double, and sew on WS.

Sew on sleeves. Sew seam allowances over cut edges. Weave in all ends on WS.

KNEE LENGTH SOCKS (Size: 34/36 – 37/39 – 40/42 – 44)

Using needles size 3 mm and light grey yarn, cast on 48 – 60 – 60 – 72 sts. Work in rnds approx. 7 cm/2.8 in in K1,P1 rib.

Change to needles size 3½ mm. Work 1 rnd in St st, and inc evenly across number of sts to be 60 – 72 – 72 – 84 sts. Place a marker beg of rnd (= mid back). Work in patt III, **but** when work measures approx. 12 – 14 – 15 – 16 cm/4.7-5.5-5.9-6.3 in, beg dec. Dec 1 st both sides of the marker approx. every 4 – 2- 1 ½ – 1 ½ cm/1.6-0.8-0.6-0.6 in. When patt III is ready, cont working in patt IV until 48 – 52 – 54 – 56 sts rem and work measures approx. 36 – 37 – 38 – 39 cm/14.2-14.6-15-15.4 in (end with a complete white stripe). Change to light grey yarn, and cont working in St st. Slip 24 – 26 – 27 – 28 mid front sts on holder. Work for heel over rem 24 – 26 – 27 – 28 sts. Work back and forth 6 – 6 – 7 – 7 cm/2.4-2.4-2.8-2.8 in in St st. Beg dec: K16-18-18-19, turn. Slip first st, and P9-11-10-11, turn. Slip first st, and work 1 st more each time, until 2 sts rem at each side.

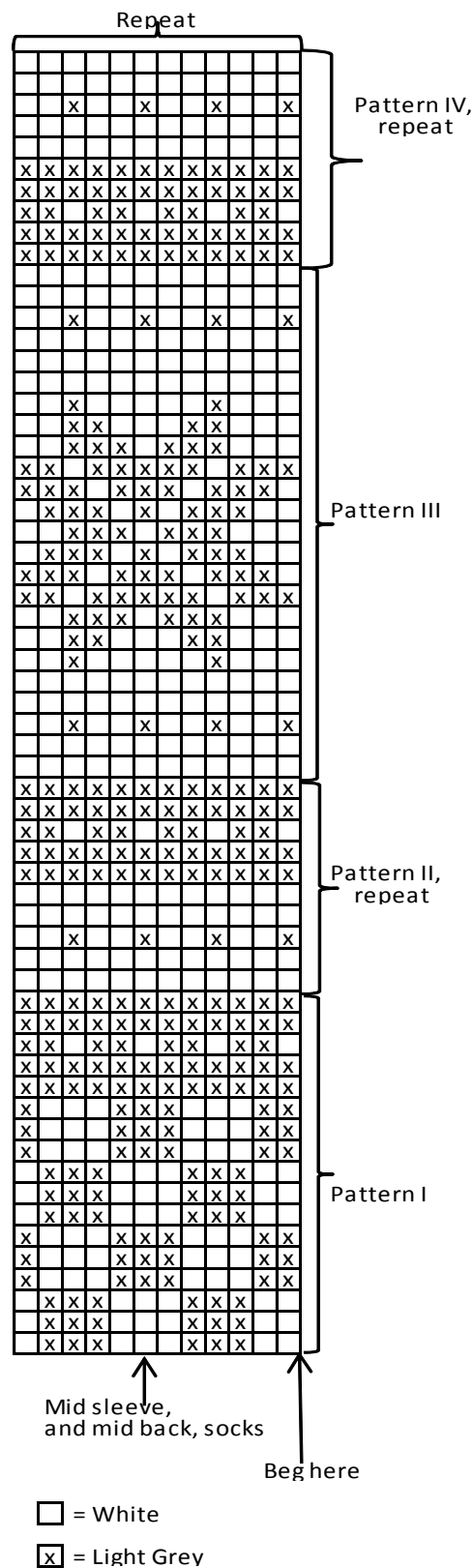
Turn, and knit all sts. You have now reached left edge of the heel. Pick up 17 – 18 – 20 – 21 sts along each side of the heel. Cont working in rnds with light grey yarn over all sts. Dec **same time** 1 st every rnd both sides of the sts that were on holder until 48 – 52 – 54 – 56 sts rem. Work until foot measures approx. 18 – 20 – 22 – 24 cm/7.1-7.9-8.7-9.4 in (or desired length before dec).

Beg dec: Place markers each side, with same number of sts for upper part and sole. Dec 1 st both sides of the marker every 2nd rnd 2 times, and then every rnd until 12 – 12 – 14 – 12 sts rem. Break yarn, thread through rem sts, tighten the yarn, and weave in on WS.

HAT (Size: S – M – L/XL)

Using needles size 3 mm and light grey, cast on 108 – 120 – 132 sts. Work in rnds approx. 3 cm/1.2 in in K1,P1 rib. Change to needles size 3½ mm. Work in patt III as charted, and after that in patt IV until hat measures 24 – 24 – 25 cm/9.4-9.4-9.8 in. Dec for crown: *K4, K2tog*, rep *-* across the rnd. Work 2 rnds in St st. Rep dec every 3rd rnd with 1 st less between dec each time until 36 – 40 – 44 sts rem. Knit all sts tog in pairs. Break yarn, thread through rem sts, tighten the yarn, and weave in on WS.

PATTERN FOR SWEATER AND KNEELength SOCKS



Viking Merino Superfine

Sweater, hat and socks 1403-13

| | |
|-----------------------|--|
| Size: | 2 – 4/6 – 8 – 10 – 12 yrs |
| Chest: | 63 – 68 – 73 – 78 – 83 cm 24.8 – 26.8 – 28.7 – 30.7 – 32.7 in |
| Length: | 36 – 43 – 50 – 54 – 58 cm 14.2 – 16.9 – 19.7 – 21.3 – 22.8 in |
| Sleeve length: | 27 – 32 – 39 – 43 – 46 cm 10.6 – 12.6 – 15.4 – 16.9 – 18.1 in |

ALTERNATIVE YARN: Viking Merino Superfine (100% Merino Wool-Superfine), Viking Superwash (100 % wool, superwash), Viking Alpaca Sport (30% alpaca, 40 % merino wool, 30% nylon), Viking Sportsragg (60% wool, 20% nylon, 20% acrylic), Viking Sportsgarn (100% wool), 50 g ball

Sweater

Off-White, 602 : 5 – 6 – 6 – 7 – 8 balls

Light Grey, 613 : 2 – 3 – 3 – 4 – 4 balls

Socks

Off-White, 602: 1 1 1 2 2 balls

Light Grey, 613: 1 1 1 1 1 ball

Hat

Off-White, 602 – 2 balls

Light Grey, 613 – 1 ball

Circular needle and double pointed needles size 3 and 3 ½ mm – US 2 or 3 and 4 – UK/Canadian 11 and 10 or 9

Gauge: 23 sts = approx. 10 cm/4 in over St st using needles size 3½ mm. **Check your gauge to ensure success.**

TIP! When working in a patt with 2 clr, it's important to maintain the order of yarns over your finger. Always hold the darker clr in front throughout the whole project.

Note! Instruction contains shaping for neck edge, worked back and forth. If you wish to work in rnds, and cut the sts afterwards, see instruction below.

Using needles size 3 mm and light grey yarn, cast on 144 – 156 – 168 – 180 – 192 sts. Work in rnds in K1,P1 rib. After 3 rnds cont with stripes as foll: *4 rnds with off-white, 4 rnds with grey*, rep *-* until rib measures approx. 5 – 5 – 6 – 6 – 7 cm/2-2-2.4-2.4-2.8 in. Change to needles size 3 ½ mm. Work in patt A as charted. Place markers each side, 72 – 78 – 84 – 90 – 96 sts for both back and front. When work measures approx. 31 – 38 – 45 – 48 – 52 cm/12.2-15-17.7-18.9-20.5 in, slip 16 – 16 – 18 – 18 – 18 mid front sts on holder for neck edge. Cont working back and forth. Bind off at each edge every 2nd row 1x5 – 5 – 5 – 6 – 6 sts, 2x2 sts, and 2x1 st. Cont working until work measures 36 – 43 – 50 – 54 – 58 cm/14.2-16.9-19.7-21.3-22.8 in.

Sleeves: Using needles size 3 mm and light grey yarn, cast on 38 – 40 – 40 – 42 – 42 sts. Work in rib same as for body. Change to needles size 3½ mm. Work in patt A, and inc evenly across 1st rnd number of sts to be 48 – 50 – 50 – 50 – 52 sts. Place a marker beg of rnd (= mid under sleeve). Inc 1 st both sides of the marker approx. every 2 ½ – 3 – 2 ½ – 2 ½ – 2 ½ cm/1-1.2-1-1-1 in until there is 64 – 68 – 74 – 78 – 82 sts on a rnd, and sleeve measures approx. 36 – 43 – 50 – 54 – 58 cm/14.2-16.9-19.7-21.3-22.8 in. Turn work inside out, and work 5 rnds in St st. Bind off.

Finishing: Dampen pieces slightly from WS. Sew 2 dense zigzag seams around armholes. Cut open between seams. Sew

normal zigzag over cut edges. Join shoulder seams, 18-20-22-25-27 sts for each shoulder.

Neck band: Using needles size 3 mm and off-white yarn, pick or knit up approx. 90 – 94 – 98 – 102 – 106 sts along neck edge. Work 1 rnd in St st, and cont working in rib with stripes same as for body. Bind off rather loosely in rib. Fold neck band in double, and sew on WS.

Cutting the neck edge: Sew a curving marker thread for neck edge, approx. 5 – 5 – 5 – 6 – 6 cm/2-2-2-2.4-2.4 in below the upper edge. Pick up with off-white yarn approx. 54 – 56 – 58 – 60 – 64 sts along the marked line (check that patt is same on each side of the neck edge) + sts from back = 90 – 94 – 98 – 102 – 106 sts. Work 1 rnd in St st, and cont working in rib with stripes same as for body. Bind off rather loosely in rib. Sew 2 dense zigzag seams along inner side of neck edge. Cut off all extras. Sew normal zigzag over cut edges. Fold neck band in double over cut edge, and sew on WS. Sew on sleeves. Sew seam allowances over cut edges. Weave in all ends on WS.

HAT

Using needles size 3 mm and light grey yarn, cast on 102 – 108 – 114 – 120 – 120 sts. Work approx. 10-10-11-11-12 cm/4-4-4.3-4.3-4.7 in in striped rib same as for body. Change to needles size 3 ½ mm. Work in patt A until hat measures 20 – 22 – 22 – 23 – 23 cm/7.9-8.7-8.7-9.1-9.1 in. Beg dec for crown: *K4, K2tog*, rep *-* across the rnd. Work 2 rnds in St st. Rep dec every 3rd rnd with 1 st less between dec each time until 34-36-38-40-40 sts rem. Knit all sts tog in pairs. Break yarn, thread through rem sts, tighten the yarn, and weave in on WS.

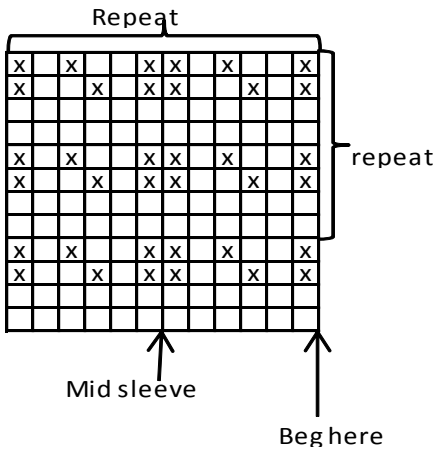
Make a small pom-pom with light grey yarn, and fasten it on top.

SOCKS

Using needles size 3 mm and light grey yarn, cast on 48 – 54 – 60 – 66 – 66 sts. Work in rnds approx. 2 cm/0.8 in in K1,P1 rib. Change to needles size 3½ mm. Work in patt A until work measures approx. 10 – 11 – 12 – 13 – 14 cm/4-4.3-4.7-5.1-5.5 in. Slip 24 – 27 – 30 – 33 – 33 mid front sts on holder, and work for heel over rem 24 – 27 – 30 – 33 – 33 back sts (beg of rnd = inner seam of foot). Work back and forth approx. 4-5-6-6-7 cm/1.6-2-2.4-2.4-2.8 in with light grey yarn over rem sts. Beg dec: Knit until 6 – 7 – 8 – 9 – 9 sts rem at one side, turn, work until 6 – 7 – 8 – 9 – 9 sts rem at the other side. Turn, and work until 1 st rem before the turning, sl 1 st, K1, pssso. Turn, work until 1st rem before turning, P2tog. Rep dec until all side sts are dec. Pick or knit up with off-white yarn approx. 8 – 10 – 12 – 14 – 14 sts from each side of the heel. Cont working in rnds in patt A, and **same time** dec 1 st every rnd both sides of the sts that were left on holder until 36 – 42 – 42 – 48 – 48 sts rem. When sock measures approx. 14 – 16 – 17-18-20 cm/5.5-6.3-6.7-7.1-7.9 in (or as desired before dec), **beg dec:** Place markers each side, same number of sts for both upper side and sole. Dec 1 st both sides of the markers every 2nd rnd 2 times, and then every rnd until 8 – 8 – 12 – 12 – 12 sts rem. Break yarn, thread through rem sts, tighten the yarn, and weave in on WS.

Work same for the other sock.

Pattern A



□ = Off-White
 [x] = Grey

Viking Merino Superfine Sweater 1403-14

| | | | | | | | |
|------------------------|-------------|----------|-------------|----------|-------------|----------|----------------|
| Size : | S | - | M | - | L | - | XL |
| Chest : | 110 | - | 115 | - | 120 | - | 125 cm |
| | 43.3 | - | 45.3 | - | 47.2 | - | 49.2 in |
| Length : | 68 | - | 69 | - | 70 | - | 72 cm |
| | 26.8 | - | 27.2 | - | 27.6 | - | 28.3 in |
| Sleeve length : | 48 | - | 49 | - | 50 | - | 52 cm |
| | 18.9 | - | 19.3 | - | 19.7 | - | 20.5 in |

ALTERNATIVE YARNS: Viking Merino Superfine (100% Merino Wool-Superfine), Viking Superwash (100 % wool, superwash), Viking Alpaca Sport (30% alpaca, 40 % merino wool, 30% nylon), Viking Sportsragg (60% wool, 20% nylon, 20% acrylic), Viking Sportsgarn (100% wool), 50 g ball

Off-White, 602 : 11 – 12 – 12 – 13 balls
 Grey, 615 : 6 – 7 – 7 – 8 balls

Circular needle and double pointed needles size 3 and 3 ½ mm – US 2 or 3 and 4 – UK/Canadian 11 and 10 or 9

Gauge: 23 sts = approx. 10 cm/4 in over St st using needles size 3½ mm. **Check your gauge to ensure success.**

TIP! When working in a patt with 2 clr, it's important to maintain the order of yarns over your finger. Always hold the darker clr in front throughout the whole project.

Note! Instruction contains shaping for neck edge, worked back and forth. If you wish to work in rnds, and cut the sts afterwards, see instruction below.

Using needles size 3 mm and grey yarn, cast on 252 – 264 – 276 – 288 sts. Work in rnds in K1,P1 rib. After 3 rnds, cont working with stripes:*4 rnds with off-white, 4 rnds with grey*, rep *-* until rib measures approx. 7 – 7 – 8 – 8 cm/2.8-2.8-3.1-3.1 in. Change to needles size 3 ½ mm. Work in patt A as charted. Place markers each side, 126 – 132 – 138 – 144 sts for both back and

front. When work measures approx. 61 – 62 – 62 – 64 cm/24-24.4-24.4-25.2 in, slip 20 – 22 – 22 – 24 mid front sts on holder for neck edge. Cont working back and forth. Bind off at each edge every 2nd row 1x6 sts, 1x3 sts, 1x2 sts, and 3x1 st. Cont working until work measures 68 – 69 – 70 – 72 cm/26.8-27.2-27.6-28.3 in.

Sleeves

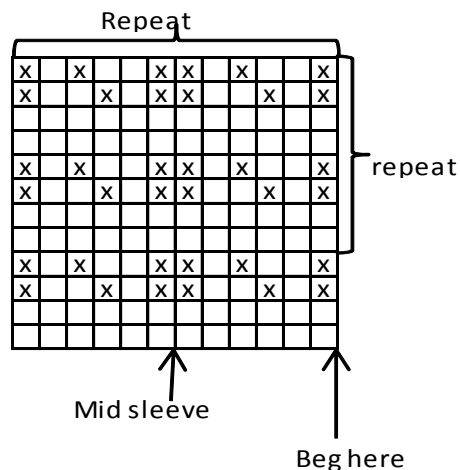
Using needles size 3 mm and grey yarn, cast on 44 – 48 – 48 – 50 sts. Work in rib same as for body. Change to needles size 3½ mm. Work in patt A, and inc evenly across 1st rnd number of sts to be 56 – 58 – 58 – 60 sts. Place a marker beg of rnd (= mid under sleeve). Inc 1 st both sides of the marker approx. every 1 cm/0.4 in until there is 114 – 118 – 124 – 128 sts on a rnd, and sleeve measures approx. 48 – 49 – 50 – 52 cm/18.9-19.3-19.7-20.5 in. Turn work inside out, and work 5 rnds in St st for seam allowance. Bind off.

Finishing : Dampen pieces slightly from WS. Sew 2 dense zigzag seams around armholes. Cut open between seams. Sew normal zigzag over cut edges. Join shoulder seams, 39-41-44-46 sts for each shoulder.

Neck band: Using needles size 3 mm and grey yarn, pick or knit up approx. 106-110-114-116 sts. Work 1 rnd in St st, and cont working in rib same as for body. Bind off rather loosely in rib. Fold neck band in double, and sew on WS.

Cutting the neck edge: Sew a curving marker thread for neck edge, approx. 7 – 7 – 8 – 8 cm/2.8-2.8-3.1-3.1 in below upper edge. Using grey yarn, pick up approx. 58 – 60 – 64 – 64 sts along marked line (check that patt is same both sides of the neck edge) + sts from back = 106-110-114-116 sts. Work 1 rnd in St st, and cont in rib same as for body. Bind off rather loosely in rib. Sew 2 dense zigzag seams along inner side of neck edge. Cut off all extras. Sew normal zigzag over cut edges. Fold neck edge in double over cut edges, and sew on WS. Sew on sleeves. Sew seam allowances over cut edges. Weave in all ends on WS.

Pattern A



□ = Off-White
 [x] = Grey