

Viking Baby Ull 1006-1

Cardigan, trousers, hat and booties

Viking **BABY ULL**, 100% superwash wool, Viking **pure MILK fiber**, 100% milk fiber, 50 g ball

Size 0/3 6 9 months

CARDIGAN

Chest	53	57	62	cm
	20.9	22.4	24.4	in
Length	25	27	29	cm
	9.8	10.6	11.4	in
Sleeve length	17	19	23	cm
	6.7	7.9	9.1	in

Materials

Cardigan

Yellow, 342 3 4 4 balls

Hat and booties

Yellow, 342 2 2 2 balls

Trousers

Yellow, 342 3 3 4 balls

Needles and accessories: Circular needle and double pointed needles size 2½ and 3 mm – US 1 or 2 and 2 or 3 – UK/Canadian 13 or 12 and 11.

4-5-5 small buttons for cardigan and 2 buttons for trousers.

Gauge: 28 sts = approx. 10 cm/4 in over St st, using needles size 3 mm. Check your tension to ensure success.

CARDIGAN

Using knitting needles size 3 mm, cast on 149-161-173 sts. Work 4 rows in Garter st. Cont working in patt as charted.

When work measures approx. 16-17-18 cm/6.3-6.7-7.1 in, place markers each side, 77-83-89 sts for back, and 36-39-42 sts for each front. Bind off at each edge 8-10-10 sts (4-5-5 sts on both side of the marker). Finish back and front separately.

Back: Cont working back and forth in patt as charted. Bind off at each edge every 2nd row 1x3, 1x2, and 1x1 sts. (Note! K2tog and yo go tog, if there aren't enough sts for both, work rem sts in St st). When work measures approx. 25-27-29 cm/9.8-10.6-11.4 in, and armhole measures approx. 9-10-11 cm/3.5-4-4.3 in, bind off.

Front: Work and bind off for armhole same as for back. When work measures approx. 21-23-25 cm/8.3-9.1-9.8 in, bind off for neck edge every 2nd row, 1x8-9-10, 1x3, 1x2 and 1x1 sts. When work measures the same as back, bind off. Work same for the other front, rev all shaping.

Sleeves: Using needles size 3 mm, cast on 36-38-40 sts. Work 4 rows in Garter st. Cont working in rnds. K 1 rnd, and adjust evenly across the rnd the number of sts to be 43-47-49 sts. Cont working in patt as charted (check from mid st where to beg patt). Place a marker mid under arm. Inc 1 st on both side of the marker approx. every 3½-3½-3 cm/1.4-1.4-1.2 in, until you have 51-57-63 sts in a rnd. When work measures approx. 17-20-23 cm/6.7-7.9-9.1 in, or desired length, bind off 8-10-10 sts under arm (4-5-5 sts on both side of the marker). Cont working back and forth, and bind off at each edge every 2nd row 1x3, 1x2 and 1x1 sts. Bind off rem sts. Work same for the other sleeve.

Finishing: Sew shoulder seams.

Neck border: Using needles size 2½ mm, pick or knit up along the neck edge approx. 73-77-81 sts. Work 5 rows in Garter st. Bind off.

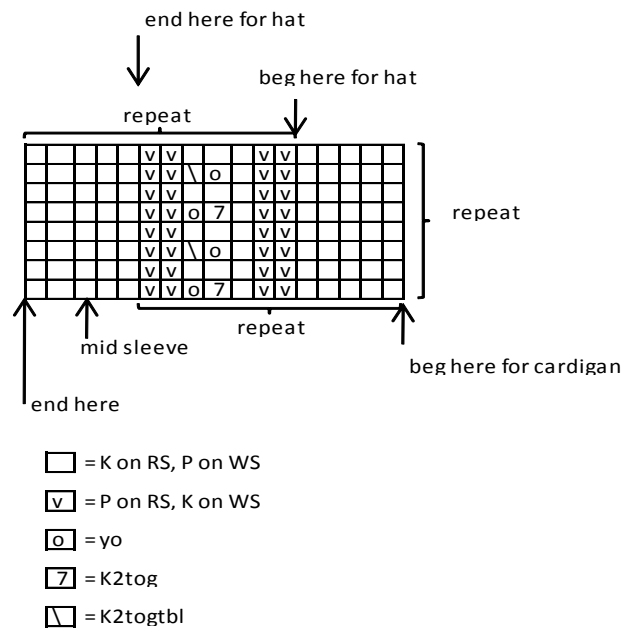
Left front border: Beg from neck edge, using needles size 2½ mm, pick or knit up approx. 64-70-76 sts. Work 5 rows in Garter st. Bind off. Place markers for 4-5-5 buttons. One approx. 2 cm/0.8 in from the hem line, one mid neck border, and rest evenly spaced apart.

Right front border: Work same as for left front border, but make buttonholes on 2nd (= RS) row. **Buttonhole:** Bind off 2 sts. Next row: Cast on 2 new sts over the bound-off sts. Sew on the sleeves.

HAT

Using needles size 2½ mm, cast on 91-91-103 sts. Work 2 cm/0.8 in, in K1,P1 rib. Change to needles size 3 mm, and work back and forth in patt as charted. When work measures approx. 12-13-14 cm/4.7-5.1-5.5 in, cont working in St st. Beg dec: K1, *K2tog, K6-6-8*, rep *-* across the row. Rep dec every 2nd row, with 1 sts less between each dec, until 12-12-10 sts rem. Break yarn, and thread through rem sts, tighten and weave in on WS. Sew mid back seam.

Lower edge border: Using needles size 2½ mm, knit up approx. 69-73-75 sts along the lower edge (around the neck). Work 2 rows in K1,P1 rib. Eyelet row: *K2tog, 1 yo*, rep *-* across the row. Work 2 rows in rib. Bind off. Twist an n approx. 70 cm/27.6 in long cord, or use a silk ribbon, and thread it through the eyelet row. Weave in all ends on WS.



TROUSERS

Beg from up front. Using needles size 3 mm, cast on 31-33-35 sts. Work 2 rows in K1,P1 rib. Next row: Make 1 button hole at each edge inside 3 sts. **Buttonhole:** Bind off 2 sts. Next row: Cast on 2 new sts over the bound-off sts. Work alttog. 6 rows in rib. Cont working in St st inside 5 sts at each edge (= worked in rib). Inc 1 st at each edge (inside 5 border sts). Rep inc every 2nd row until you have 59-63-65 sts on a row. Put the piece aside, and work same for back, but without buttonholes. Slip both back and front on same circular needle, and cast on 13 sts at each edge (= mid under arm) = 144-152-156 sts. Cont working in St st for 2-2-3 cm/0.8-1.2-1.2 in (**Note!** Work new sts in rib for first 5 rows). Work as foll: P 1 rnd, next rnd: *K2tog, 1 yo*, rep *-* across the rnd, P 1 rnd, K 1 rnd. Work 3-3-4 cm/1.2-1.2-1.6 in, in K1,P1 rib, K1 rnd, P 1 rnd, K 1 rnd, P 1 rnd, K 1 rnd. Next rnd: Inc evenly across the rnd 12-16-20 sts = 156-168-176 sts. Place markers each side, 79-85-89 sts for front and 77-83-87 for back, and 1 marker mid front and 1

Viking Baby Ull 1006-2

Cardigan, trousers and hat

Viking **BABY ULL**, 100% superwash wool, Viking **pure MILK fiber**, 100% milk fiber, 50 g ball

Size 3/6 9/12 18 24 months

CARDIGAN

	3/6	9/12	18	24	months
Chest	54	58	61	65	cm
	21.3	22.8	24	25.6	in
Length	30	32	34	36	cm
	11.8	12.6	13.4	14.2	in
Sleeve length	17	19	21	24	cm
	6.7	7.5	8.3	9.4	in

TROUSERS

	3/6	9/12	18	24	months
Width	55	58	61	64	cm
	21.7	22.8	22.8	25.2	in
Leg length	16	20	24	27	cm
	6.3	7.9	9.4	10.6	in

Materials

CARDIGAN AND HAT

Light Blue, 324 3 4 4 5 balls

TROUSERS AND SOCKS

Light Blue, 324 3 3 4 4 balls

Needles and accessories: Double pointed needles and circular needle size 2½ and 3 mm – US 1 or 2 and 2 or 3 – UK/Canadian 13 or 12 and 11.

5 buttons for cardigan.

Gauge: 28 sts = approx. 10 cm/4 in over St st, using needles size 2½ mm. Check your tension to ensure success.

CARDIGAN

Using needles size 2½ mm, cast on 169-177-185-197 sts. Work back and forth 3 cm/1.2 in, in K1,P1 rib, **but** when work measures 1½ cm/0.6 in, make 1 buttonhole on left edge, 3 sts from front edge. Buttonhole: bind off 2 sts. Next row: cast on 2 sts over the bound-off sts. Slip first and last 8 sts on holders (= front borders, will be worked on later) = 153-161-169-181 sts rem. Change to needles size 3 mm, K 1 row and adjust evenly across the row the number of sts to be 154-160-172-184 sts. Place markers each side, 80-82-88-94 sts for back, and 37-39-42-45 sts for both fronts. Cont working in patt as charted. When work measures 20-21-22-23 cm/7.9-8.3-8.7-9.1 in, bind off 8 sts at each edge (= 4 sts on both side of the markers). Finish back and front separately.

Back: Cont working back and forth in patt as charted. Bind off at each edge every 2nd row 2x2 and 1x1 sts. When work measures 30-32-34-36 cm/11.8-12.6-13.4-14.2 in, and armhole measures 10-11-12-13 cm/4-4.3-4.7-5.1 in, bind off rather loosely.

Right front: Work and bind off same as for back. When armhole measures 6-7-7-8 cm/2.4-2.8-2.8-3.1 in, bind off at neck edge every 2nd row 1x9-11-13-15, 1x3, 1x2 and 2x1 sts (same for all sizes). When work measures the same as back, bind off. Work same for left front, rev all shaping.

Sleeves: Using dpn size 2½ mm, cast on 34-36-38-40 sts. Work 3 cm/1.2 in, in K1,P1 rib. Change to needles size 3 mm. K 1 rnd adjusting the number of sts evenly across the rnd to be 44-46-48-50 sts. Place a marker under arm, and cont working in patt as charted. Inc 1 st on both side of the marker approx.

mid back. Work short rows to rise the back of the trousers: Beg from the mid back marker. K7, turn, P15. Cont working in the same way, working each time 7 sts more, 4 times more at each side. K 1 rnd across all sts. Cont working in rnds until work measures approx. 14-15-16 cm/5.5-5.9-6.3 in, measured from inc rnd. Inc 1 st on both side of mid front and back markers every 2nd rnd altog. 5-6-6 times = 20-24-24 sts inc. Next rnd: Bind off mid front 10-12-12 sts, and mid back 10-12-12 sts. Finish each leg separately (= 78-84-88 sts). Cont working in St st until leg measures approx. 16-19-22 cm/6.3-7.5-8.7 in. Adjust the number of sts evenly across the rnd to be 48-48-52 sts, P 1 rnd, K 1 rnd, P 1 rnd, 1 eyelet rnd: *K2tog, 1 yo*, rep *-* across the rnd, P 1 rnd, K 1 rnd, P 1 rnd. Bind off. Work same for the other leg.

Finishing: Sew crotch seam.

Straps (worked separately and joined later): Using needles size 2½ mm, cast on 7 sts. Work approx. 5 cm/2 in, in K1,P1 rib. Bind off. Work same for the other strap. Sew straps on back, inside rib. Sew on buttons. Thread a yellow silk ribbon through the eyelet rnd, and tie it mid front (or twist a cord using yellow yarn).

BOOTIES

Using needles size 2½ mm, cast on 43-43-49 sts. Work 4 rows in Garter st. Work 3 cm/1.2 in, in K1,P1 rib. Work 2 rows in Garter st, 1 eyelet row: *K2tog, 1 yo*, rep *-* across the rnd, K 1 row adjusting the number of sts evenly across the rnd to be 37-39-41 sts. Work 5-6-6 cm/2-2.4-2.4 in, or desired length, in St st over 11 mid sts. Slip sts on holder. Place sts on three needles, and pick up along both sides of the mid piece approx. 12-13-15 sts = 61-65-71 sts. Work 25-27-30 rows in Garter st. Beg dec: K25-27-30, K2tog, K7, K2tog, K25-27-30. Next row: K all sts. Rep dec every 2nd row, with 2 sts less between dec. When 3 sts rem between dec, sl1, K2tog, pss0 = 1 st rem. Bind off rather loosely. Sew sole and back seam. Weave in ends on WS. Twist approx. 40 cm/15.7 in long cord (or a silk band) and thread through eyelet row.

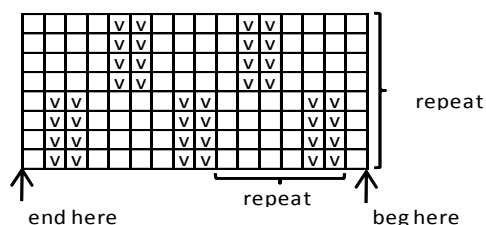
every 2-2-1½-1½ cm/0.8-0.8-0.6-0.6 in until you have 58-62-68-74 sts on a rnd. When work measures 17-19-21-24 cm/6.7-7.5-8.3-9.4 in, bind off 8 sts mid under arm (= 4 sts on both side of the marker). Cont working back and forth, and bind off at each edge every 2nd row 2x2 and 1x1 sts. Bind off. Work same for the other sleeve.

Finishing: Sew shoulder seams.

Right front border: Slip 8 sts from a holder on needles size 2½ mm. Cont working in K1,P1 rib until border reaches up to neck edge (do not stretch while measuring). Put the piece aside, and work same for left front border, but make 3 buttonholes evenly spaced apart.

Neck edge: Slip front border sts on a circular needle size 2½ mm, and pick or knit up around neck edge approx. 88-92-98-102 st. Work 2 cm/0.8 in, in K1,P1 rib. When neck border measures 1 cm/0.4 in, make 1 buttonhole on left front border. When work measures 2 cm/0.8 in, bind off first and last 8 sts. Cont working for another 2 cm/0.8 in, in rib until work measures 4 cm/1.6 in. Bind off rather loosely. Fold border in double, and sew on WS.

Set sleeves in, and sew front borders. Weave in ends on WS. Sew on buttons.



□ = K on RS, P on WS

▣ = P on RS, K on WS

TROUSERS

Beg from lower edge of right leg. Using dpn size 2½ mm, cast on 48-48-54-54 sts. Work 3 cm/1.2 in, in patt as charted.

Change to dpn size 3 mm. K 1 rnd, adjusting the number of sts across the rnd to be 56-56-60-60 sts. Cont working in St st. Place a marker on inner seam, and inc 1 st on each side of the marker approx. every 1-1-1½-1½ cm/0.4-0.4-0.6-0.6 in until you have 78-82-86-90 sts on a rnd. When work measures approx. 16-20-24-27 cm/6.3-7.9-9.4-10.6 in, put the piece aside, and knit the other leg.

Slip legs on same circular needle size 3 mm, with inner seams facing each other = 156-164-172-180 sts. Place markers mid front and back. Dec 1 st (= K2tog) every 2nd rnd on each side of the marker. Rep dec altogether 4 times = 140-148-156-164 sts. When work measures 16-17-19-20 cm/6.3-6.7-7.5-7.9 in (measured from the crotch), place markers at each side, 70-74-78-82 sts for both back and front. Work short rows to rise the back of the trousers: Beg from the mid back marker. K6, turn, P12. Cont working in the same way, working each time 6 sts more, 4 times more at each side. K 1 rnd over all sts, and adjust the number of sts evenly across the rnd to be 130-138-146-152 sts. Work 5 cm/2 in, in K1,P1 rib. Bind off. Fold waistband in double, and sew on WS. Weave in ends on WS, and sew crotch seam. Thread elastic.

SOCKS

Using dpn size 2½ mm, cast on 40-42-44-46 sts. Work 8 cm/3.1 in, in K1,P1 rib. Change to dpn size 3 mm, and work in St st. Heel: Work back and forth in St st over mid back 20-21-22-23 sts. Work until 1 st rem, turn, work until 1 st rem in other edge. Cont in the same way until 6-7-8-9 sts rem in the

middle. Turn, work 1 more st on each row. To avoid holes, M1 after the last mid st, and Ktogtbl with next st. Rep until all sts are returned back to work. Cont working in rnds until foot measures approx. 8-9-10-11 cm/3.1-3.5-4-4.3 in (or desired length). Next rnd: Dec 1 st beg of each dpn every 2nd 4 times, and then every rnd until 8 sts rem. Break yarn and thread through rem sts. Weave in ends on WS. Work same for the other sock.

HAT

Beg from one ear flap. Using needles size 2½ mm, cast on 3 sts. Work back and forth K1, P1, K1, and inc 1 st beg of each row until you have 19-21-23-25 sts on a row = 1 ear flap. Work same for the other ear flap, but make 1 buttonhole on 6th row: K1, bind off next 3 sts, K1. Next row: Cast on 3 new sts over the bound-off sts. Using a short circular needle, work across 1 ear flap, cast on 36-38-40-46 sts (= front), work across the other ear flap, cast on 16-16-16-18 sts (= back) = 90-96-102-114 sts. Cont working in rnds in rib, until work measures approx. 2 cm/0.8 in. Change to needles size 3 mm, and cont working in rnds in patt as charted. When work measures approx. 13-14-15-16 cm/5.1-5.5-5.9-6.3 in (measured mid front), beg crown dec: K all sts tog in pairs. K 1 rnd. Rep dec = 23-24-26-29 sts rem. K 1 rnd. Rep dec again = 12-12-13-15 sts rem. Break yarn, and thread through rem sts. Weave in ends on WS. Sew on the button.

Viking Baby Ull Overall and hat

1006-3

Viking **BABY ULL**, 100% merino wool, Viking **pure MILK fiber**, 100% milk fiber, 50 g ball

Size	0/3	6/9	12	months
Chest	51	56	61	cm
	20.1	22	24	in
Length	51	55	59	cm
	20.1	21.7	23.2	in
Sleeve length	13	16	18	cm
	5.1	6.3	7.1	in
Leg length	16	20	24	cm
	6.3	7.9	9.4	in

Materials

OVERALL AND HAT

Blue, 323	5	5	6	balls
White, 301	1	1	1	ball

Needles and accessories: Short circular needle and double pointed needles size 2½ and 3 mm – US 1 or 2 and 2 or 3 – UK/Canadian 13 or 12 and 11.

1 zipper.

Gauge: 28 sts = approx. 10 cm/4 in over St st, using needles size 3 mm. Check your tension to ensure success.

OVERALL

Beg from lower edge of one leg: Using needles size 2½ mm and blue yarn, cast on 46-52-58 sts. Work in K1,P1 rib and stripes as foll: 4 rows in blue, 2 rows in white, 4 rows in blue, 2 rows in white, and 4 rows in blue. Change to needles size 3 mm, and K 1 row, adjusting the number of sts evenly across the row to be 75-77-81 sts. Cont working in St st within selvage sts (= K each row). Inc 1 st at each edge approx. every

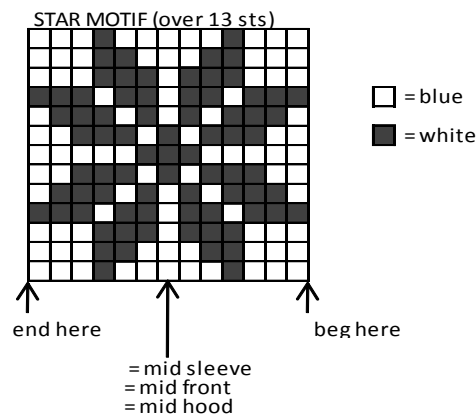
1½ cm/0.6 in (same for all sizes) until you have 89-97-103 sts on a row. **Same time**, work 10 rows in blue yarn. Work star motif in the middle of the leg (check from chart where to beg the motif). When motif has been completed, cont working in St st and blue yarn. When work measures approx. 16-20-24 cm/6.3-7.9-9.4 in, put the piece aside, and knit the other leg. Slip legs on same circular needle size 3 mm (= 178-194-206 sts). Place markers mid front and back. Cont working in St st. Dec 1 st (= K2tog) every rnd on each side of the marker mid front and back 6 times (= 154-170-182 sts). K 2 rnds. Divide work mid front, and cont working back and forth (= 78-86-92 sts for back, 38-42-45 sts for each front). Work 3 sts at each edge in Garter st. Dec 1 st every 4th row on both side of the markers 3 times (= 72-80-86 sts for back, 35-39-42 sts for both fronts). Same time, when work measures approx. 31-34-37 cm/12.2-13.4-14.6 in, work short rows to rise the back of the overall: Beg from the mid back marker. K5, turn, P10. Cont in the same way, working each time 5 sts more, 4-4-4 times more at each side. When work measures approx. 37-39-41 cm/14.6-15.4-16.1 in, bind off 6 sts at each side (= 3 sts on both side of the markers). Put the piece aside, and knit sleeves.

Sleeves: Using dpn size 2½ mm, cast on 34-38-42 sts. Work back and forth in rib, same as for legs. Change to needles size 3 mm, and cont working in St st. Adjust the number of sts evenly across 1st row to be 53-55-57 sts. *Work 4 rows in blue. Work star motif in the middle of the sleeve (check from chart where to beg the motif)*, rep *-* until end. Cont inc 1 st at each edge approx. every 1½ cm/0.6 in (same for all sizes) until you have 63-69-73 sts on a row. When work measures approx. 13-16-18 cm/5.1-6.3-7.1 in, bind off 6 sts underarm. Put the piece aside, and work same for the other sleeve.

Slip all pieces on same circular needle size 3 mm (= 244-272-292 sts). Cont working back and forth in St st and patt as charted (= sleeves), with dec at 4 raglan seam lines, (place markers for all 4 raglan seam lines): K2tog **after** each marker, and K2togtbl **before** each marker. Rep dec **every** row 4 times, and then every 2nd row. When work measures approx. 8-9-10 cm/3.1-3.5-4 in, measured from joining in the sleeves, bind off at each edge for neck 10-12-14 sts. Bind off at neck edge every 2nd row 1x3, 1x2 and 1x1 sts (same for all sizes), cont raglan dec as before. End with a complete or half star motif. When the work measures approx. 14-16-18 cm/5.5-6.3-7.1 in, measured from joining in the sleeves, bind off.

Neck border: Using needles size 2½ mm, pick or knit up approx. 66-72-76 sts around neck edge. Work 9 rows in St st, P 1 row for folding edge, and work 9 rows in St st. Bind off. Fold border in double and sew on WS. Twist a cord using blue and white yarn, and thread it into the border. **Hood:** Using needles size 3 mm and blue yarn, cast on 102-119-136 sts. Work 3 cm/1.2 in, in St st, P 1 row (= folding edge). Work 4 rows in K1,P1 rib, and 4 rows in St st. Work patt as foll: 2 sts in blue, *star motif as charted over 13 sts, 4 sts in blue*, rep *-* across the row, and end with 2 sts in blue. On 10th row, dec 1 st at each edge, rep dec every 2nd row altogether 6 times (same for all sizes). When star motif is completed, cont working in St st and blue yarn until work measures 15-16-17 cm/5.9-6.3-6.7 in. Bind off mid 6-5-6 sts (= 42-51-59 sts rem for each side).

Finish each side separately. **Right side:** Work 2 rows. Bind off every 2nd row (at opposite edge of the earlier bound-off sts) 10,10,11,11 – 13,13,13,12 – 15,15,15,14 sts. Work same for left side, rev shaping. Sew mid bound-off sts to the sides to form top seam. Sew the hood to neck border, beg from mid back. Fold front border in double and sew on WS. Weave in ends on WS. Sew underarm seams and inner seams of the legs. Sew on zipper. Twist a cord using blue and white yarn, and thread it into the border.



HAT 0/6-9/12 months

Using short circular needle size 2½ mm and white yarn, cast on 102-120 sts. Work in K1,P1 rib and stripes same as for overall (with opposite clrs). Change to circular needle size 3 mm, and work 4 rnds in St st. Dec 1 st on 1st rnd for size 9/12 months. Work star motif with 4 sts between each star (patt is divisible by 17 sts). When motif is completed, cont in St st and white yarn until work measures approx. 14-16 cm/5.5-6.3 in. Next rnd: Adjust the number of sts evenly across the rnd to be 96-108 sts. Beg crown dec: *K10, K2tog*, rep *-* across the rnd. Rep dec every 2nd rnd with 1 st less between dec until 16-18 sts rem. Break yarn, and thread through rem sts, pull tightly, and weave in ends on WS.

Viking Baby Ull 1006-4

Dress, hat and socks

Viking **BABY ULL**, 100% superwash wool, Viking **pure MILK fiber**, 100% milk fiber, 50 g ball

Size	3/6	9/12	18/24	months
Chest	56	60	64	cm
	22	23.6	25.2	in
Length	39	43	47	cm
	15.9	16.9	18.5	in
Sleeve length	14	15	16	cm
	5.5	5.9	6.3	in

Materials

White, 300 3 4 4 balls

Some pink, rose and green for embroidery and cords.

Needles and accessories: Double pointed needles and circular needle size 2 and 2½ mm – US 0 and 1 or 2 – UK/Canadian 14 and 13 or 12.

Crochet hook size 3 mm – US C/2 or D/3 – UK/Canadian 11. 4 buttons

Gauge: 28 sts = approx. 10 cm/4 in over St st, using needles size 2½ mm. Check your tension to ensure success.

DRESS

Using circular needle size 2½ mm, cast on 234-270-306 sts. Work 4 rows in Garter st. Change to needles size 2½ mm, and cont working in rnds.: Place markers each side, 117-135-153 sts for both back and front. Cont working in patt II as charted (beg as shown on the chart), work *patt I, patt II*, rep *-* across the rnd. When patt II is completed, carry on working in patt I (sts prev worked in patt II are now worked in St st). When work measures 5-6-7 cm/2-2.4-2.8 in Ktog 2 first and last sts in each St st-panel. Rep dec every 5-6-7 cm/2-2.4-2.8 in altog. 2-

3-4 times = 130-150-170 sts rem. Cont working in patt I and 3-3 sts in St st between each patt until work measures approx. 29-32-35 cm/11.4-12.6-13.8 in. Bind off 8 sts at each side (= 4 sts on both side of the markers). **Note!** Check that there will be patt I mid front when work is divided. Finish back and front separately.

Back: Bind off 5 mid sts. Finish each side separately. Bind off for armholes at each edge every 2nd row 1x3, 1x2 and 1x1 sts. Cont working in St st. When work measures 39-43-47 cm/15.4-16.9-18.5 in, and armhole measures 10-11-12 cm/4-4.3-4.7 in, slip sts on holder, or bind off rather loosely. Work same for the other side, rev all shaping.

Front: Work and bind off same as for back. Cont working patt I over 3 mid stripes. When work measures 35-38-42 cm/13.8-14.9-16.5 in, bind off mid 15-17-19 sts. Finish each side separately. Bind off at neck edge every 2nd row 1x3-4-4, 1x2 and 1-2-2x1 sts. When work measures same as back, slip sts on holder, or bind off rather loosely. Work same for the other side, rev all shaping.

Sleeves: Using needles size 2½ mm, cast on 40-44-48 sts. Work in rnds 2 cm/0.8 in, in St st. Next rnd: *K2tog, 1 yo*, rep *-* across the rnd (= folding edge) + 2 cm/0.8 in, in St st. Change to needles size 3 mm. K 1 rnd, and adjust the number of sts evenly across the rnd to be 49-51-57 sts. Cont working in patt as foll: K4-5-8, *patt I, P1, K5, P1*, rep *-* across the rnd, end with K4-5-8. Inc 1 st mid under arm approx. every 3-2½-2 cm/1.2-1-0.8 in until you have 57-61-69 sts on a rnd. When work measures 14-15-16 cm/5.5-5.9-6.3 in, or desired length, bind off 8 sts mid under arm. Cont working back and forth. Bind off at each edge every 2nd row 1x3, 1x2 and 1x1 sts. Bind off rem sts. Work same for the other sleeve. Weave in ends on WS. Sew on buttons.

Finishing: Join shoulder seams.

Neck border: Using needles size 2½ mm, pick or knit up approx. 80-86-90 sts along neck edge. Work 6 rows in Garter st. Bind off.

Borders mid back: Using needles size 2½ mm, pick or knit up approx. 28-32-36 sts along left side edge. Work 3 rows in St st, bind off. Place markers for 4 buttons, one approx. 2 cm/0.8 in from the lower edge, and one mid neck border. Work same for right edge, but make 4 buttonholes. Buttonhole: K2tog, 1 yo. Sew on the sleeves. Weave in ends on WS. Embroider flowers on front (see photo).

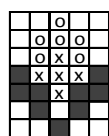
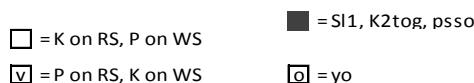
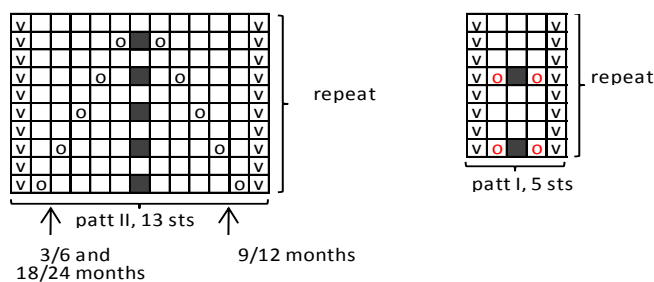
HAT

Using needles size 2½ mm, cast on 81-93-105 sts. Work back and forth 2 cm/0.8 in, in St st. Next RS row: *K2tog, 1 yo*, rep *-* across the row (= folding edge). Work 2 cm/0.8 in, in St st. Change to needles size 3 mm, and K 1 row (= WS), and adjust the number of sts evenly across the row to be 90-102-114 sts. Cont working back and forth in patt as charted: *P1, K5, P1, patt I*, rep *-* across the row, end with K5, P1. When work measures approx. 12-13-14 cm/4.7-5.1-5.5 in, measured from folding edge, cont working in St st. Beg dec: K6, *K2tog, K4*, rep *-* across the row. Rep dec every 2nd row with 1 st less between each dec until 15-17-19 sts rem. Break yarn, and thread through rem sts. Weave in ends on WS. Sew mid back seam.

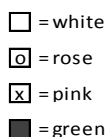
Lower edge border: Using needles size 2½ mm, knit up approx. 69-73-75 sts along the lower edge of the hat. Work 2 rows of K1,P1 rib. Next row: *K2tog, 1 yo*, rep *-* across the row. Work 2 more rows in rib. Bind off rather loosely. Twist an approx. 70 cm/27.6 in long cord (or use a silk ribbon), and thread it into the eyelet row.

SOCKS

Using dpn size 2½ mm, cast on 48 sts. Work 6 rows in Garter st. Change to needles size 2½ mm, and cont working in rnds in patt as foll: *P1, patt I, P1, K5*, rep *-* across the rnd. When work measures 5-5-6 cm/2-2-2.4 in, work 1 eyelet rnd: *K2tog, 1 yo*, rep *-* across the rnd. Work 2 rnds in St st, and adjust the number of sts evenly across the last rnd to be 42-44-46 sts. Heel: Work back and forth in St st over mid back 21-22-23 sts. Work until 1 s rem, turn, work until 1 st rem in other edge. Cont in the same way until 7-8-9 sts rem in the middle. Turn, work 1 more st on each row. To avoid holes, M1 after the last mid st, and Ktogtbl with next st. Rep until all sts are returned back to work. Cont working in rnds in St st and patt as charted until foot measures approx. 9-10-11 cm/3.5-4-4.3 in, or desired length, dec 1 st beg of each needle. Rep dec every 2nd rnd 4 times, and then every rnd until 8 sts rem. Break yarn and thread through rem sts. Weave in ends on WS. Work same for the other sock.



= patt embroidered afterwards in duplicating sts



Underwear set

Viking **pure MILK fiber**, 100% pure milk fiber, alternative yarn Viking **BABY ULL**, 100% merino wool, 50 g ball

Size 0/1 3 6 9 months 1 2 3 4 yrs

Note! Diaper undies up to size 2 yrs

Sweater

Chest, approx.	42	44	45	48	50	52	54	56	cm
	16.5	17.3	17.7	18.9	19.7	20.5	21.3	22	in
Length, approx.	28	30	32	34	36	38	40	42	cm
	11	11.8	12.6	13.4	14.2	15	15.7	16.5	in
Sleeve length, approx.	21	23	25	28	30	33	37	40	cm
	8.3	9.1	9.8	11	11.8	13	14.6	15.7	in

Cardigan with overlapping fronts

Chest, approx.	42	44	45	48	50	52	54	56	cm
	16.5	17.3	17.7	18.9	19.7	20.5	21.3	22	in
Length, approx.	25	27	29	31	33	35	37	39	cm
	9.8	10.6	11.4	12.2	13	13.8	14.6	15.4	in
Sleeve length, approx.	21	23	25	28	30	33	37	40	cm
	8.3	9.1	9.8	11	11.8	13	14.6	15.7	in

Trousers

Width around the hips, approx.	42	45	48	50	52	55	58	61	cm
	16.5	17.7	18.9	19.7	20.5	21.7	22.8	24	in
Leg length, approx.	18	20	22	24	27	32	37	42	in

Diaper undies

Width around the hips	44	45	48	50	52	55			cm
	17.3	17.7	18.9	19.7	20.5	21.7			in

Materials

Sweater

Multicolor, 365 2 2 2 2 3 3 3 3 balls

Cardigan with overlapping fronts

Pink, 361 2 3 3 3 4 4 4 5 balls

Trousers

Pink, 361 2 2 3 3 3 4 4 4 balls

Diaper undies

Multicolor, 365 1 1 1 2 2 2 balls

Circular needles, short circular needles and double pointed needles size 2½ and 3mm – US 1 or 2 and 2 or 3 – UK/Canadian 13 or 12 and 11.

Sweater: 1 button. **Cardigan with overlapping fronts:** 2 buttons. **Trousers:** Elastic band. **Diaper undies:** Elastic band.

Gauge: 28 sts = 10 cm/4 in over St st, using needles size 3 mm. Check your tension to ensure success.

Buttonhole: Bind off 2 sts. Next row: cast on 2 sts over the bound-off sts.

SWEATER

Knitted round on circular needle, back and front together. Using circular needle size 2½ mm, cast on 112-116-120-128-132-140-144-152 sts. Work 1½ cm/0.6 in, in K2,P2 rib. Change to circular needle size 3 mm. Cont working in St st, and inc8 sts evenly across 1st rnd = 120-124-128-136-140-148-152-160 sts. Place markers on each side, 60-62-64-68-70-74-76-80 sts for both back and front. When work measures 19-20-22-23-25-26-27-28 cm/7.5-7.9-8.7-9.1-9.8-10.2-10.6-11 in, bind off 6-6-6-8-8-8-10-10 sts at each side (= 3-3-3-4-4-4-5-5 sts on both side of the markers). Finish back and front separately.

Back = 54-56-58-60-62-66-66-70 sts

Cont working back and forth, bind off for armhole at each edge every 2nd row 1x2 and 1-1-2-3-2-3-3-4x1 sts = 48-50-50-50-54-56-56-58 sts. When work measures 26-28-30-32-34-36-38-40 cm/10.2-11-11.8-12.6-13.4-14.2-15-15.7 in, bind off mid 20-22-22-22-26-28-28-30 sts. Work each side separately. **Right side:** Bind off at neck edge every 2nd row 1x2 sts = 12 sts rem for shoulder. When work measures 28-30-32-34-36-38-40-42 cm/11-11.8-12.6-13.4-14.2-15-15.7-16.5 in, bind off. **Left side:** Work as for right side, rev all shaping. When work measures 28-30-32-34-36-38-40-42 cm/11-11.8-12.6-13.4-14.2-15-15.7-16.5 in, change to needles size 2½ mm. Work back and forth within selvage sts (= K every row) 1½ cm/0.6 in, in K2,P2. Bind off.

Front = 54-56-58-60-62-66-66-70 sts

Bind off for armholes as for back = 48-50-50-50-54-56-56-58 sts. When work measures 23-25-27-29-30-32-34-36 cm/9.1-9.8-10.6-11.4-11.8-12.6-13.4-14.2 in, bind off mid 12-14-14-14-18-20-20-22 sts. Work each side separately. **Right side:** Bind off at neck edge every 2nd row 1x3,1x2 and 1x1 sts = 12 sts rem for the shoulder. When work measures 28-30-32-34-36-38-40-42 cm/11-11.8-12.6-13.4-14.2-15-15.7-16.5 in, bind off. **Left side:** Work as for right side, rev all shaping. When work measures 28-30-32-34-36-38-40-42 cm/11-11.8-12.6-13.4-14.2-15-15.7-16.5 in, change to needles size 2½ mm. Work back and forth within selvage sts 1½ cm/0.6 in, in

K2,P2. When rib measures ½ cm/0.2 in, make 1 buttonhole 2 sts from neck edge. Buttonhole: Bind off 2 sts. Next row: Cast on 2 new sts over bound-off sts. Bind off.

Sleeves

Using dpn size 2½ mm, cast on 42-42-45-45-45-48-48-48 sts. Work in rnds 1½ cm/0.6 in, in K2,P2 rib. Change to dpn size 3 mm. Cont working in St st. When work measures 4 cm/1.6 in, inc 2 sts under arm 4-7-6-7-7-8-10-12 times every 2½-1½-2½-2-2½-2½-2½-2 cm/1-0.6-1-0.8-1-1-1-0.8 in = 50-56-56-59-59-64-67-73 sts. When work measures 17-19-21-23-25-28-31-34 cm/6.7- 7.5-8.3-9.1-9.8-11-12.2-13.4 in, bind off mid under arm 6-6-6-8-8-8-10-10 sts. Bind off for sleeve top at each edge on every 2nd row 1x3, 3x2 sts and 1 st until work measures 20-22-24-27-29-32-36-39 cm/7.9-8.7-9.4-10.6-11.4-12.6-14.2-15.4 in. Bind off at each edge every 2nd row 2x3 sts, bind off rem sts. Sleeve measures approx. 21-23-25-28-30-33-37-40 cm/ 8.3-9.1-9.8-11-11.8-13-14.6-15.7 in.

Finishing: Sew right shoulder seam. Overlap left front on top of left back (left armhole will be the same size as right one) and sew together at armhole edge. Sew on sleeves.

Neck edge: Using circular needle size 2½ mm, pick or knit up approx. 88-92-96-100-108-116-120-124 sts (number of sts must be divisible by 4) along neck edge and rib on left shoulder. Work back and forth inside selvage sts 1½ cm/0.6 in, in K2,P2 rib. Bind off.

Finishing: Sew on button.

CARDIGAN WITH OVERLAPPING FRONTS

Bodice is worked back and forth in one piece. Using circular needle size 2½ mm, cast on 148-154-160-172-178-190-196-208 sts. Work 1½ cm/0.6 in, in K2,P2 rib. Change to circular needle size 3 mm. Cont working in St st. Inc 24 sts evenly across 1st row = 172-178-184-196-202-214-220-232 sts. Place markers each side, 60-62-64-68-70-74-76-80 sts for back, 56-58-60-64-66-70-72-76 sts for both fronts). When work measures 12-13-14-15-16-17-18-19 cm/ 4.7-5.1-5.5-5.9-6.3-6.7-7.1-7.5 in, bind off at each edge every 2nd row 6-6-6-6-7-7-7-7x3, 6-6-6-7-7-8-8-9x2 and 6-7-8-8-8-9-9-10x1, and every 4th row 2-3-3-3-3-3-4-4x1 st. **Same time**, when work measures 16-17-19-20-22-23-24-25 cm/6.3-6.7-7.5-7.9-8.7-9.1-9.4-9.8 in, bind off 3-3-3-4-4-4-5-5 sts on both side of the markers (= 6-6-6-8-8-8-10-10 at each side). Finish back and front separately.

Back = 54-56-58-60-62-66-66-70 sts

Bind off for armhole at each edge every 2nd row 1x2 and 1-1-2-3-2-3-3-4x1 sts = 48-50-50-50-54-56-56-58 sts. When work measures 23-25-27-29-31-33-35-37 cm/9.1-9.8-10.6-11.4-12.2-13-13.8-14.6 in, bind off mid 20-22-22-22-26-28-28-30 sts. Work each side separately. Bind off at neck edge every 2nd row 1x2 sts = 12 sts rem for shoulder. When work measures 25-27-29-31-33-35-37-39 cm/9.8-10.6-11.4-12.2-13-13.8-14.6-15.3 in, bind off.

Front

Bind off for armhole as for back = 48-50-50-50-54-56-56-58 sts. **Same time**, cont binding off at front edge as before. After finishing binding off, 12 sts rem for shoulder. When work measures 25-27-29-31-33-35-37-39 cm/9.8-10.6-11.4-12.2-13-13.8-14.6-15.4 in, bind off.

Sleeves

Using dpn size 2½ mm, cast on 42-42-45-45-45-48-48-48 sts. Work in rnds 1½ cm/0.6 in, in K2,P2 rib. Change to size 3 mm dpn. Cont working in St st. When work measures 4 cm/1.6 in, inc 2 sts mid under arm 4-7-6-7-7-8-10-12 times every 2½-1½-2½-2-2½-2½-2½-2 cm/1-0.6-1-0.8-1-1-1-0.8 in = 50-56-56-59-59-64-67-73 sts. When work measures 17-19-21-23-25-28-31-34 cm/6.7-7.5-8.3-9.1-9.8-11-12.2-13.4 in, bind off mid

under arm 6-6-6-8-8-8-10-10 sts. Bind off for sleeve top at each edge on every 2nd row 1x3, 3x2 sts and 1 st until work measures 20-22-24-27-29-32-36-39 cm/7.9-8.7-9.4-10.6-11.4-12.6-14.2-15.4 in. Bind off at each edge every 2nd row 2x3 sts, bind off rem sts. Sleeve measures approx. 21-23-25-28-30-33-37-40 cm/8.3-9.1-9.8-11-11.8-13-14.6-15.7 in.

Finishing

Sew shoulder seams, and set in sleeves.

Front border: Using circular needle size 2½ mm, knit up along both fronts and neck edge approx. 14 sts per 5 cm/2in – total number of sts must be divisible by 4. Work in K2,P2 rib within selvage sts (beg and end RS row with K2). Place markers on both fronts where the slanting beg, and inc 1 st on each side of the marker every 2nd row – inc sts are worked in rib. Bind off, when border measures 1½ cm/0.6 in.

Finishing

Crochet a buttonhole loop on left side front close to the marker, and sew a button on right ‘side seam’, and another one on right front (both buttons should be sewn on same height).

TROUSERS

Using short circular needle size 2½ mm, cast on 116-120-128-132-140-144-152-160 sts. Work in rnds 5 cm/2 in, in K2,P2 rib. Change to circular needle size 3 mm (all measures are taken from here). Cont working in St st, and inc 4-8-8-8-8-12-12-12 sts evenly across 1st rnd = 120-128-136-140-148-156-164-172 sts. Place markers on each side, 60-64-68-70-74-78-82-86 sts for both sides. Place 2 more markers, 1 mid front, and another mid back (= 29-31-33-34-36-38-40-42 sts between the markers). Work short rows to rise the back of the trousers, beg mid back: K10, turn, P20. Cont in the same way, working each time 10 sts more, altogether turning 12 times (= 6 times on each side). Cont working in St st over all sts. When work measures 18-18-19-19-20-21-22-23 cm/ 7.1-7.1-7.5-7.5-7.9-8.3-8.7-9.1 in – measured from mid front, inc 1 st every 2nd rnd on each side of 2 mid sts front and back altogether 3 times, and every rnd twice= 140-148-156-160-168-176-184-192 sts. Divide the work in two, 70-74-78-80-84-88-92-96 sts for each leg.

Leg: Cont working in St st, in rnds. Cast on 1st rnd 8 sts on the inner edge = 78-82-86-88-92-96-100-104 sts. Place marker to 3rd cast-on st (5 cast-on sts for the back, 2 for the front). Dec 1 st on each side of the marker, 4 times every 2nd rnd, after that every 1 cm/0.2 in until 44-44-44-44-48-48-48-48 sts rem. When leg measures 16-18-20-22-25-30-35-40 cm/6.3-7.1-7.9-8.7-9.8-11.8-13.8-15.7 in (or desired length), change to needles size 2½ mm. Work 1½ cm/0.6 in, in K2,P2 rib. Bind off. Knit the other leg.

Finishing: Sew crotch seam. Fold waistband in half, sew on WS. Thread elastic.

DIAPER UNDIES

Using short circular needle size 2½ mm, cast on 116-120-128-132-140-144 sts. Work in rnds 5cm/2 in, in K2,P2 rib. Change to circular needle size 3 mm (all measures are taken from here). Cont working in St st, and inc 8-8-8-8-8-12 sts evenly across 1st rnd = 124-128-136-140-148-156 sts. Place markers on each side, 62-64-68-70-74-78 sts for each side. Place 1 more marker mid back (= 31-32-34-35-37-39 sts between markers). Work short rows to rise the back of the undies, beg mid back: K10, turn, P20. Cont in the same way, working each time 10 sts more, altogether turning 12 times (= 6 times on each side). Cont working in St st. When work measures 15-15-16-16-17-18 cm/5.9-5.9-6.3-6.3-6.7-7.1 in - measured from mid front, place new marker – all measures are taken from here. Next rnd, beg from side marker: K11, bind off 6 sts, K28-

30-34-36-40-44 sts (= front), bind off 6 sts. Leave rem 84-86-90-92-96-100 sts (= back) on holder. Cont working back and forth in St st with mid front sts, and bind off at each edge every 2nd row 3x2 and 5x1 sts = 6-8-12-14-18-22 sts. When mid part measures 5 cm/2 in, leave rem sts on holder. Sl sts for back on circular needle, work back and forth, and bind off as for front = 62-64-68-70-74-78 sts. When back measures 6 cm/3.6 in, bind

off at each edge every 2nd row 5x1, 3x2, 1x6, 3x2 and 5x1 sts = 6-8-12-14-18-22 sts. When back measures 15 cm/5.9 in, leave sts on holder.

Finishing: Join the crotch seam. Fold waistband in half, sew on WS. Thread elastic.

Edges: Using dpn size 2½ mm, pick up along leg opening 88 sts. Work 2 cm/0.8 in, in K2,P2 rib. Bind off rather loosely.

Viking Baby Ull 1006-7

Cardigan, trousers, hat and socks

Viking **pure MILK fiber**, 100% milk fiber, Viking **BABY ULL**, 100% merino wool, 50 g ball

Size	0/3	6	9/12	months
Chest	50	57	61	cm
	19.7	22.4	24	in
Length	25	27	29	cm
	9.8	10.6	11.4	in
Sleeve length	17	21	24	cm
	6.7	8.3	9.4	in
Leg length	17	19	22	cm
	6.7	7.5	8.7	in

Materials

SWEATER

Turquoise, 329 3 4 4 balls

HAT

Turquoise, 329 1 1 1 ball

TROUSERS AND SOCKS

Turquoise, 329 3 3 4 balls

Needles and accessories: Circular needle and double pointed needles size 2½ and 3 mm – US 1 or 2 and 2 or 3 – UK/Canadian 13 or 12 and 11.
2 buttons.

Gauge: 28 sts = approx. 10 cm/4 in over St st, using needles size 3 mm. Check your tension to ensure success.

Seed st:

1st row: *K1, P1*.

2nd row: K all p-sts, and P all k-sts.

Rep 2nd row.

SWEATER

Using needles size 3 mm, cast on 140-160-170 sts. Work in rnds 3 cm/1.2 in, in Seed st. Cont working in patt as charted. When work measures approx. 16-17-18 cm/6.3-6.7-7.1 in, place markers each side, 69-79-85 sts for back, and 71-81-85 sts for front. Bind off 8-10-10 sts at each edge (= 4-5-5 sts on both side of the markers). Finish back and front separately.

Back: Cont working back and forth in patt as charted. Bind off at each edge every 2nd row 1x3, 1x2 and 1x1 sts (**Note!** K2tog and yo go together, if there aren't enough sts for both, work rem sts in St st). When work measures approx. 25-27-29 cm/9.8-10.6-11.4 in, and armhole measures 9-10-11 cm/3.5-4-4.3 in, bind off.

Front: Work and bind off same as for back. Next RS row: Bind off mid 5 sts. Work each side separately. When work measures approx. 21-23-25 cm/8.3-9.1-9.8 in, bind off 6-7-8 sts at neck edge. Bind off at neck edge every 2nd row 1x3, 1x2

and 2x1 sts. When work measures the same as back, bind off. Work same for the other side, rev all shaping.

Sleeves: Using needles size 3 mm, cast on 36-38-40 sts. Work 3 cm/1.2 in, in Seed st. K 1 rnd adjusting the number of sts evenly across the rnd to be 41-45-47 sts. Work in patt as charted (check from mid st where to beg patt). Place a marker mid under arm. Inc 1 st on both side of the marker approx. every 2½-2½-2 cm/1-1-0.8 in until you have 51-57-63 sts on a rnd (inc sts are worked in patt). When work measures 17-21-24 cm/6.7-8.3-9.4 in, bind off 8-10-10 sts mid under arm (= 4-5-5 sts on both side of the marker). Cont working back and forth, and bind off at each edge every 2nd row 1x3, 1x2 and 1x1 sts. Bind off. Work same for the other sleeve.

Finishing

Sew shoulder seams.

Neck border: Using needles size 2½ mm, and pick or knit up around neck edge approx. 69-73-79 sts. Work back and forth 2 cm/0.8 in, in Seed st. Bind off.

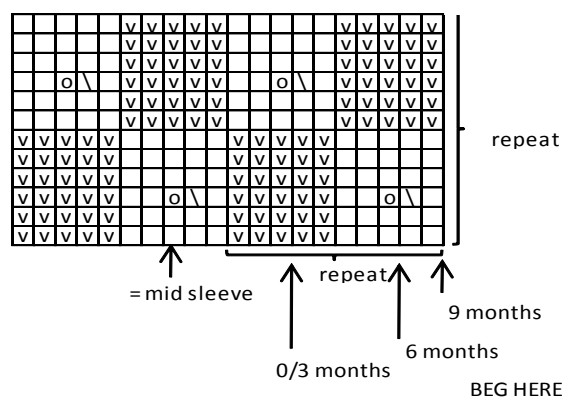
Left front border: Using needles size 2½ mm, pick or knit up approx. 20-22-24 sts. Work 7 rows in Seed st. Bind off. Place markers for 2 button, one approx. 2 cm/0.8 in from lower edge, and another mid neck border.

Right front border: Work same as for left front. Make buttonholes on 3rd row. Buttonhole: Bind off 2 sts. Next row: Cast on 2 new sts over the bound-off ones.

Set sleeves in, and sew front borders. Weave in ends on WS. Sew on buttons.

HAT

Using needles size 2½ mm, cast on 80-90-100 sts. Work in rnds 4 cm/1.6 in, in Seed st. K 1 rnd. Cont working in patt as charted. When work measures approx. 14-15-16 cm/5.5-5.9-6.3 in, dec 1 st every 4th rnd in each p-panel and k-panel until 22-24-24 sts rem. Break yarn, thread through rem sts, and tighten. Weave in ends on WS.



□ = K on RS, P on WS

∇ = P on RS, K on WS

○ = yo

◻ = K2tog

SOCKS – SEE INSTRUCTION 1006-2

TROUSERS

Beg from lower edge of right leg. Using dpn size 2½ mm, cast on 48-48-54 sts. Work 3 cm/1.2 in, in K1,P1 rib. Change to dpn size 3 mm. K 1 rnd, adjusting the number of sts across the rnd to be 56-56-60 sts. Cont working in St st. Place a marker on inner seam, and inc 1 st on each side of the marker approx. every 1-1-1½ cm/0.4-0.4-0.6 in until you have 78-82-86 sts on a rnd. When work measures approx. 16-20-24 cm/6.3-7.9-9.4 in, put the piece aside, and knit the other leg.

Slip legs on same circular needle size 3 mm, with inner seams facing each other = 156-164-172 sts. Place markers mid front and back. Dec 1 st (= K2tog) every 2nd rnd on each side of the markers. Rep dec altogether 4 times = 140-148-156 sts. When work measures 16-17-19 cm/6.3-6.7-7.5 in (measured from the crotch), place markers at each side, 70-74-78 sts for both back and front. Work short rows to rise the back of the trousers:

Beg from the mid back marker. K6, turn, P12. Cont working in the same way, working each time 6 sts more, 4 times more at each side. K 1 rnd over all sts, and adjust the number of sts evenly across the rnd to be 130-138-146 sts. Work 5 cm/2 in, in K1,P1 rib. Bind off. Fold waistband in double, and sew on WS. Weave in ends on WS, and sew crotch seam. Thread elastic.

Gauge: 28 sts= approx. 10 cm/4 in over St st, using needles size 3 mm. Check your tension to ensure success.

Butterfly pattern:

1st, 3rd, 5th, 7th, 9th, 11th and 13th row (= RS): Work 5 sts in Garter st (= border, K each row). *K7, with yarn in front, slip next 7 sts to RH needle (avoid tightening the yarn)*, rep *-* across the row, end with K7, 5 sts in Garter st (= border).

2nd, 4th, 6th, 8th, 10th, 12th and 14th row (= WS): Purl (**Note!** Work 5 sts at each end in Garter st).

15th row: Work 5 sts in Garter st, K3, *insert RH needle down through the 7 loose strands, bring needle up forming 1 sl st, K next st on LH needle, pass sl st over, placing the st in the center of the loose strands (= bowknot st), K13*, rep *-* across the row, end with K3, 5 sts in Garter st.

16th, 18th and 20th row: Purl.

17th and 19th row: Knit.

21st, 23rd, 25th, 27th, 29th, 31st and 33rd row (RS): Work 5 sts in Garter st,*with yarn in front, slip next 7 sts to RH needle, K7*, rep *-* across the row, end with sl 7 sts, 5 sts in Garter st.

22nd, 24th, 26th, 28th, 30th, 32nd and 34th row (WS): Purl.

35th row: Work 5 sts in Garter st, K3, *bowknot st, K13*, rep *-* across the row, end with K2, 5 sts in Garter st.

36th, 38th and 40th row: Purl.

37th and 39th row: Knit.

Rep rows 1-40.

Selvage st: K first and last st each row.

Viking Baby Ull 1006-8
Blanket, cardigan, hat, booties
and trousers with hat

Viking **pure MILK fiber**, 100% milk fiber, Viking **BABY ULL**, 100% merino wool, 50 g ball

Size	0/3	6	9/12	months
Chest	51	56	61	cm
	20.1	22	24	in
Length	22	25	29	cm
	8.7	9.8	11.4	in
Sleeve length	17	20	23	cm
	6.7	7.9	9.1	in
Blanket, size			approx.	cm
			70 x100	
			27.6x39.4	in

Materials

CARDIGAN, HAT AND SOCKS

Violet, 370 4 4 5 balls

BLANKET

Violet, 370 9 ball

TROUSERS AND HAT

Violet, 370 3 4 4 balls

Heather, 368 1 1 1 ball

Dark violet, 371 1 1 1 ball

Needles and accessories: Short circular needle and double pointed needles size 2½ and 3 mm – US 1 or 2 and 2 or 3 – UK/Canadian 13 or 12 and 11. For blanket, circular needle size 3 mm, and crochet hook size 2½ mm – US 2 or 3 and B/1 or C/2 – UK/Canadian 11 and 12.
 3 buttons for cardigan, 4 buttons for trousers.

CARDIGAN

Using needles size 3 mm, cast on 143-157-171 sts. Work 3 rows in Garter st. Beg from RS row: *K2tog, 1 yo*, rep *-* across the row (= eyelet row). Work 3 rows in Garter st. Place markers each side, 75-81-89 sts for back, and 34-38-41 sts for each front. Cont working in Butterfly patt. When work measures approx. 12-13-16 cm/4.7-5.1-6.3 in, bind off 8 sts at each edge (= 4 sts on both side of the markers). Finish back and front separately.

Back: Cont working back and forth in Butterfly patt (if there isn't enough sts for a full motif, work extra sts in St st). Bind off at each edge for armhole every 2nd row 1x3, 1x2 and 1x1 sts (same for all sizes). When work measures approx. 22-25-29 cm/8.7-9.8-11.4 in, and armhole measures 10-11-13 cm/4-4.7-5.1 in, bind off.

Front: Work and bind off same as for back. When work measures approx. 18-21-24 cm/7.1-8.3-9.4 in, bind off for neck edge every 2nd row 1x3, 1x2 and 2x1 sts (same for all sizes). When work measures the same as back, bind off. Work same for the other side, rev all shaping.

Sleeves: Using needles size 3 mm, cast on 51 sts (same for all sizes). Work 3 rows in Garter st, 1 eyelet row and 3 rows in Garter st. Cont working inside selvage sts in Butterfly patt. Inc 1 st at each edge approx. every 5-2-2 cm/2-0.8-0.8 in until you have 57-67-73 sts on a row (inc sts are worked in St st). When work measures 17-20-23 cm/6.7-7.9-9.1 in, or desired length, bind off at each edge every 2nd row 1x4, 1x3, 1x2 and 1x1 sts. Bind off. Work same for the other sleeve. Thread a silk and through the eyelet row.

Finishing

Sew shoulder seams.

Neck border: Beg mid front. Using needles size 3 mm, and pick or knit up around neck edge approx. 71-75-81 sts. Work 4 rows in Garter st. Bind off on next WS row.

Front borders: Using crochet hooks size 2½ mm, crochet 1 row sc along both front edges. Make 3 buttonhole loops evenly spaced across right front edge. Buttonhole loop: Ch6, skip next

2 sts, 1 sl st to next st. Make 1 buttonhole loop approx. 1 cm/0.4 in below neck edge, rest 2½-3 cm/1-1.2 in spaced apart.

HAT

Using needles size 3 mm, cast on approx. 84-98-98 sts. Work 3 rows in Garter st, 1 eyelet row and 3 rows in Garter st. Cont working in rnds in Butterfly patt. When work measures approx. 12-13-14 cm/4.7-5.1-5.5 in, cont working in St st, and beg crown dec: K all sts tog in pairs. Work 3 rnds without dec. Rep dec = 21-25-25 sts rem. Work 3 rnds without dec. Rep dec = 11-13-13 sts rem. Break yarn, thread through rem sts and tighten. Weave in ends on WS.

BOOTIES

Using needles size 3 mm, cast on 43-43-49 sts. Work back and forth 4 rows in Garter st. Work 3 cm/1.2 in, in St st. Work 2 rows in Garter st, 1 eyelet row. K 1 row, adjusting the number of sts evenly across the row to be 37-39-41 sts. Cont working in St st. Work over mid 11 sts until mid section measures 5-6-6 cm/2-2.4-2.4 in, or desired length. Leave sts on holder. Slip sts on 3 needles, and pick up approx. 12-13-15 sts along both edges of mid section = 61-65-71 sts. Work 10-12-14 rows in Garter st. Beg dec: K25-27-30, K2tog, K7, K2tog, K25-27-30. Next row: Knit. Rep dec every 2nd row with 2 sts less between each dec until 3 mid sts rem. Dec rem 3 sts, sl1, K2tog, pssso. Bind off. Sew back and sole seams. Weave ends on WS. Twist approx. 40 cm/15.7 in cord, and thread through the eyelet row.

BLANKET

Using needles size 3 mm, cast on 213 sts. Work back and forth 2 rows in Garter st. Next row (= eyelet row): *K2tog, 1 yo*, rep *-* across the row. Work 3 rows in Garter st. Cont working in Butterfly patt, with 5 sts in Garter st at each edge. Rep rows 1-40. When work measures approx. 100 cm/39.4 in, work 3 rows in Garter st, 1 eyelet row and 2 rows in Garter st. Bind off. Thread a silk ribbon through the eyelet rows. Tie a small bow in one corner of the blanket.

TROUSERS

Beg from lower edge of right leg. Using needles size 2½ mm and heather clr yarn, cast on approx. 68-72-76 sts. Work 4 rows in Garter st. Change to needles size 3 mm and violet yarn. Cont working in St st. Place a marker on inner seam, and inc 1 st on each side of the marker approx. every 1½-1½-1 cm/0.6-0.6-0.4 in until you have 86-96-106 sts on a rnd. When work measures approx. 16-19-22 cm/6.3-7.5-8.7 in, put the piece aside, and knit the other leg.

Slip legs on same circular needle size 3 mm, with inner seams facing each other = 172-192-212 sts. Place markers mid front and back. Dec 1 st every 2nd rnd on each side of the markers, after the marker: K2tog, before the marker: K2togtbl. Rep dec altogether 4 times = 156-176-196 sts. When work measures approx. 32-35-42 cm/12.6-13.8-16.5 in, work short rows to rise the back of the trousers: Beg from the mid back marker. K8, turn, P15. Cont working in the same way, working each time 7 sts more, 4 times more at each side. K 1 rnd over all sts, and adjust the number of sts evenly across the rnd to be 150-165-180 sts. Work heart patt as charted. Place markers each side, 75-83-91 sts for front, and 75-82-89 sts for back. Beg patt as charted. After the motif is completed, adjust evenly across the rnd the number of sts to be 132-144-156 sts. Place new markers each side, 66-72-78 sts for both front and back. Work 6 rnds in Garter st. Change to heather clr yarn, and cont working in St st until work measures approx. 42-46-53 cm/16.5-18.1-20.9 in. Bind off at each edge 8-10-10 sts (4-5-5 sts on both sides of the markers). Finish back and front separately.

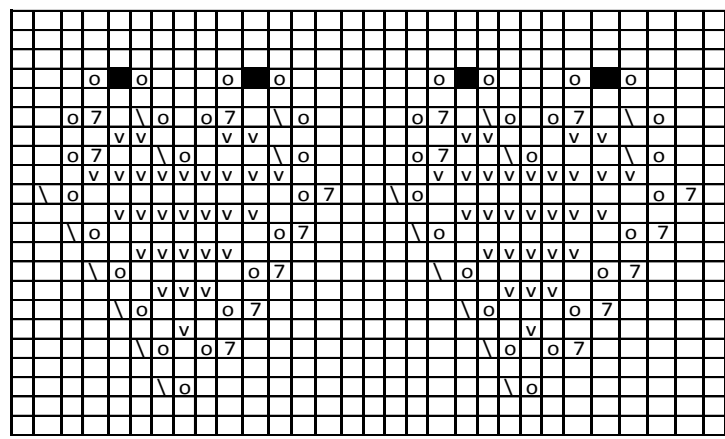
Back: Cont working back and forth in St st. Bind off at each edge every 2nd row 1x3, 1x2 and 1x1 sts. When work measures approx. 50-55-63 cm/19.7-21.7-24.8 in, bind off mid 22-24-28 sts. Finish each side separately. Bind off at neck edge every 2nd row 1x2 and 1x1 sts. When work measures approx. 52-57-65 cm/20.5-22.4-25.6 in, bind off. Work same for the other side, rev all shaping.

Front: Work and bind off armhole same as for back. When work measures approx. 48-53-61 cm/18.9-20.9-24 in, bind off mid 16-18-22 sts. Finish each side separately. Bind off at neck edge every 2nd row 1x3, 1x2 and 1x1 sts. When work measures the same as back, cont working in Garter st. Work 2 rows in Garter st, next RS row: make 2 buttonholes (approx. 1-2 sts from each edge). Buttonhole: Bind off 2 sts. Next row: Cast on 2 new sts over the bound-off sts. Work 6 more rows in Garter st. Bind off. Work same for the other side, rev all shaping.

Crochet border, armholes and neck edge, both front and back: Beg from shoulder. Using crochet hook size 2½ mm and violet yarn, work 1 row in sc around armholes/neck edge. Change to dark violet yarn, and work 1 row in sc. Next row: *Ch3, insert hook to first ch, 1 sc to next st*, rep *-* across the row. Work same around the legs' lower edge **Note!** Approx. 1 sc to every 2nd st – crochet border should be little bit tight).

HAT

Using needles size 3 mm and heather clr yarn, cast on 75-90-90 sts. Work 3 rows in Garter st. Cont working in rnds. Work in patt as charted, turning the chart upside down. Change to violet yarn, and K 1 row (= RS). Turn inside out, and work 6 rows in Garter st. Cont working in St st. When work measures approx. 14-15-16 cm/5.5-5.9-6.3 in (measured from folding edge), beg crown dec: *K2tog, K3*, rep *-* across the row. Work 3 rows in St st. Next row: *K2tog, K2*, rep *-* across the row. Rep dec every 4th row with 1 st less between each dec until 30-36-36 sts rem. K all sts tog in pairs = 15-18-18 sts rem. P 1 row. K all sts tog in pairs. Break yarn and thread through rem sts. Sew mid back seam. Fold edge in double on RS, and fasten on each side. Weave in ends on WS.



- = K on RS, P on WS
- ▮ = vP on RS, K on WS
- = Sl1, K2tog, pssso
- = yo
- ▵ = K2togtbl
- ▣ = K2tog

Viking Baby Ull

1006-9

Overall, socks, hat and scarf

Viking **BABY ULL**, 100% superwash wool, Viking **pure**

MILK fiber, 100% milk fiber, 50 g ball

Size	3/6	9/12	18/24	months
Length	54	58	64	cm
	21.3	22.8	25.2	in
Width	56	60	64	cm
	22	23.6	25.2	in
Leg length	19	22	25	cm
	7.5	8.7	9.8	in
Sleeve length	17	19	23	cm
	6.7	7.5	9.1	in

Materials

OVERALL

Grey, 313 4 5 6 balls

White, 300 3 4 5 balls

SCARF, MITTENS AND

SOCKS

Pink, 361 3 3 4 balls

Needles and accessories: Double pointed needles and circular needle size 2½ and 3 mm – US 1 or 2 and 2 or 3 – UK/Canadian 13 or 12 and 11. 5 buttons.

Gauge: 28 sts = approx. 10 cm/4 in over St st, using needles size 3 mm. Check your tension to ensure success.

OVERALL

Leg from lower edge of one leg: Using needles size 2½ mm and grey yarn, cast on 46-52-58 sts. Work 7-8-8 cm/2.8-3.1-3.1 in, in K1,P1 rib (will be folded in double, all measures are taken from mid rib). Change to needles size 3 mm. K 1 rnd, and adjust evenly across the rnd the number of sts to be 73-81-89 sts. Cont working in St st and patt I as charted. Place a marker on inner seam. Inc 1 st on both side of the marker approx. every 1½-2-3 cm/0.6-0.8-1.2 in until you have 91-97-103 sts on a rnd. When chart I is completed, cont working in patt II as charted until the end. When work measures approx. 19-22-25 cm/7.5-8.7-9.8 in, put the piece aside and knit the other leg.

Slip legs on same circular needle size 3 mm (= 182-194-206 sts). Place markers mid front and back. Cont working in St st and patt II. Dec 1 st (= K2tog) every rnd on each side of the marker mid front and back 6 times (= 158-170-182 sts). Next rnd: Dec 1 st, so that the number of sts will be divisible by 12 + 1 sts. Place markers each side, 79-85-91 sts for back, and 78-84-90 sts for front. Cont working in St st and patt II until work measures 4-5-6 cm/1.6-2-2.4 in from crotch. Cast on 3 new sts mid front (= purl every rnd, will be cut open later). When work measures approx. 43-47-52 cm/16.9-18.5-20.5 in, cont working in patt III as charted (end patt II according to the chart), and then rep patt III until the end. When work measures approx. 50-54-60 cm/19.7-21.3-23.6 in, bind off mid 19-21-23 sts (3 p-sts incl) for neck edge. Cont working back and forth, and bind off at each edge every 2nd row 1x3,1x2 and 2x1 sts (same for all sizes). When work measures approx. 54-58-64 cm/21.3-22.8-25.2 in, bind off.

Sleeves: Using dpn size 2½ mm and grey yarn, cast on 34-38-42 sts. Work 3-4-4 cm/1.2-1.6-1.6 in, in K1,P1 rib. Change to dpn 3 mm, and work in St st. Adjust evenly across 1st rnd the

number of sts to be 53-55-57 sts. Cont working in patt I as charted. When chart I is completed, cont working in patt II as charted until the end. Place a marker underarm, and inc 1 st on both side of the marker approx. every 2½-2-2 cm/1-0.8-0.8 in until you have 63-69-73 sts on a rnd. When work measures approx. 17-19-23 cm/6.7-7.5-9.1 in, turn inside out, and work 5 rnds in St st. Bind off.

Finishing: Mark the armholes (approx. 11-12-13 cm/4.3-4.7-5.1 in) on both sides, or measure the sleeve width from the upper edge of the sleeve. Sew two sewing machine seams around the armholes and mid front, and cut open between the seams. Join shoulder seams.

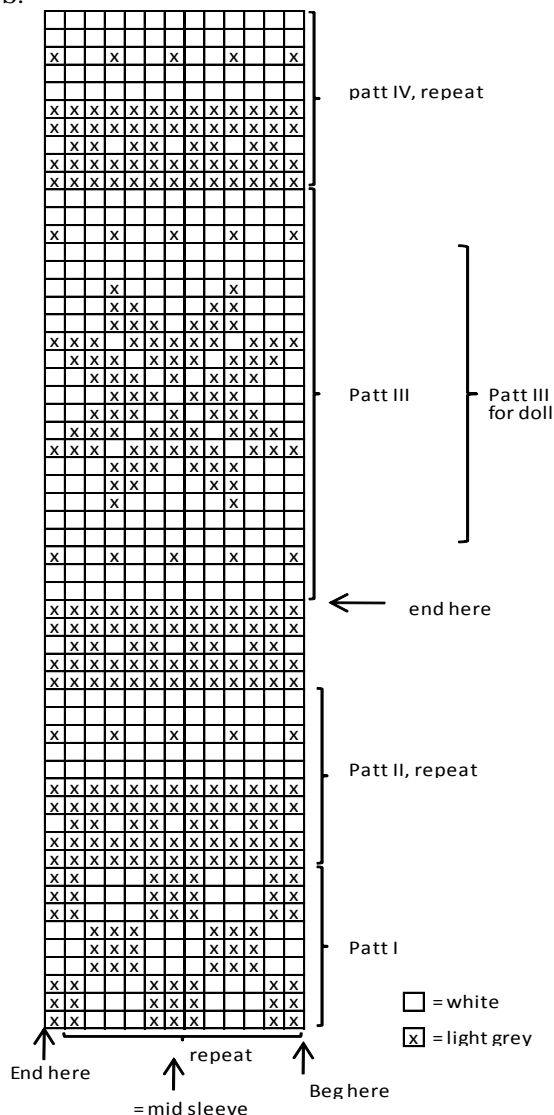
Neck border: Using circular needle size 2½ mm and grey yarn, knit up approx. 75-81-87 sts. Work 2 cm/0.8 in, in K1,P1 rib. Bind off in rib.

Right front border: Using needles size 2½ mm and grey yarn, knit or pick up approx. 76-80-84 sts. Work approx. 1½ cm/0.6 in, in K1,P1 rib. Bind off in rib. Place markers for 5 small buttons, one approx. 4 cm/1.6 in from the lower edge of the border, and one mid neck border, rest evenly apart.

Work same for left front border. Make buttonholes on 3rd row. Buttonhole: Bind off 2 sts. Next row: Cast on 2 sts over the bound-off sts.

Knit seam allowances for front borders: Pick or knit up same number of sts as for front borders from WS. Work 4 rows in St st. Bind off. Work same for the other front edge.

Set in sleeves, and sew seam allowance on WS. Weave in ends on WS.



SOCKS

Using dpn size 2 mm and pink yarn, cast on 40-42-46 sts. Work 8 cm/3.1 in, in K1,P1 rib. Change to dpn size 2½ mm, and work in St st. Heel: Work back and forth in St st over mid back 20-21-23 sts. Work until 1 s rem, turn, work until 1 st rem in other edge. Cont in the same way until 6-7-7 sts rem in the middle. Turn, work 1 more st on each row. To avoid holes, M1 after the last mid st, and Ktoggbl with next st. Rep until all sts are returned back to work. Cont working in rnds in St st until foot measures 8-9-10 cm/3.1-3.5-4 in, or desired length. Next rnd: Dec 1 st beg of each dpn every 2nd rnd 4 times, and then every rnd until 8 sts rem. Break yarn and thread through rem sts. Weave in ends on WS.

MITTENS

Using needles size 2 mm and pink yarn, cast on 38-40-42 sts. Work 5-6-6 cm/2-2.4-2.4 in, in K1,P1 rib. Change to needles size 2½ mm. K 1 rnd, and adjust the number of sts evenly across the rnd to be 44-48-52 sts. Cont working in St st until work measures approx. 11-12-13 cm/4.3-4.7-5.1 in. Place marker each side, and dec as foll: K1, sl 1 st, K1, psso, K until 3 sts rem before next marker, K2tog, K1 (= half mitten). Rep dec over the other half. Rep dec every 2nd rnd until 8-8-8 sts rem. Break yarn, and thread through rem sts. Weave in ends on WS.

HAT

Using short circular needle size 2 mm and grey yarn, cast on 96-108-120 sts. Work 4 rnds in K1,P1 rib. Change to needles size 2½ mm, and cont working in patt III as charted. K 1 rnd in grey yarn, and cont working in k1,P1 rib until work measures approx. 12-13-13 cm/4.7-5.1-5.1 in. Turn inside out, and work in patt II until work measures 22-24-26 cm/8.7-9.4-10.2 in from cast-on edge. K all sts tog in pairs. Cont working in St st. K 3 rnds without dec. Next rnd: K all sts tog in pairs. K 3 rnds without dec. Next rnd: K all sts tog in pairs = 12-14-15 sts rem. Break yarn, and thread through rem sts, pull tightly. Weave in ends on WS.

SCARF

Using needles size 2½ mm and pink yarn, cast on 5 sts. Work in Garter st, and inc 1 st every 2nd row within selvage sts (= K each row) at each edge until you have 29 sts on a row. When work measures approx. 9-10-10 cm/3.5-4-4 in, slip every 2nd st on an extra needle (work is divided into 'front' and 'back'). Cont working approx. 5 cm/2 in, in K1,P1 rib over front sts. Work same for back sts. Slip sts back to same needle, and work 25 cm/9.8 in, in Garter st. Divide sts again on two needles, and work 5 cm/2 in, in K1,P1 rib. End same as the beg, only instead of inc, dec. When 5 sts rem, bind off. Weave in ends on WS.

DOLL

Size		BabyBorn
Width	38	cm
	15	in
Length	19	cm
	7.5	in
Sleeve length	10	cm
	4	in
Waist	35	cm
	13.8	in
Leg length	8	cm
	3.1	in
Circumference	30	cm
	11.8	in

CARDIGAN, TROUSERS AND HAT

Light Blue, 324	2	balls
White, 300	1	ball

Needles and accessories: Double pointed needles and circular needle size 2½ and 3 mm – US 1or 2 and 2 or 3 – UK/Canadian 13 or 12 and 11.
4 buttons.

Gauge: 28 sts = approx. 10 cm/4 in over St st, using size 3 mm needles. Check your tension to ensure success.

CARDIGAN

Using needles size 2½ mm and light blue yarn, cast on 109 sts. Work 4 rows in K1,P1 rib. Change to needles size 3 mm, and P 1 row (= WS). Place markers each side, 57 sts for back and 26 sts for each front. Cont working in patt as charted: 2 rows in patt I, and then approx. 9 cm/3.5 in, in patt II (ending with white stripe). Work back and fronts separately.

Back: Work in patt III as charted, **but** change the basic clr into light blue. Cont in patt II (beg with white stripe) until the end. When work measures approx. 19 cm/7.5 in, and armhole measures approx. 10 cm/4 in, bind off.

Right front: Work same as for back. When work measures approx. 16 cm/6.3 in, bind off at neck edge every 2nd row 1x2 and 1x1 sts. When work measures the same as back, bind off. Work same for left front, rev all shaping.

Sleeves: Using needles size 2½ mm and light blue yarn, cast on 34 sts. Work 4 rnds in K1,P1 rib. K 1 rnd, adjusting the number of sts evenly across the rnd to be 44 sts. Cont working in patt II as charted. Place a marker mid under arm, and inc 1 st approx. every 1½ cm/0.6 in until you have 56 sts on a rnd. When sleeve measures approx. 10 cm/4 in, bind off.

Finishing: Join shoulder seams.

Neck border: Using needles size 2½ mm and light blue yarn, knit up 45 sts along neck edge. Work 4 rows in K1,P1 rib. Bind off.

Left front border: Using needles size 2½ mm and light blue yarn, knit up approx. 47 sts. Work 3 rows in K1,P1 rib. Bind off. Place markers for 4 buttons, one approx. 2 cm/0.8 in from hem line and one approx. 1 cm/0.4 in from neck edge, rest evenly spaced apart.

Work same for right front edge, but with buttonholes.

Buttonhole: K2tog, 1 yo. Set in sleeves. Weave in ends on WS. Sew on buttons.

TROUSERS

Using needles size 2½ mm, cast on 84 sts. Work approx. 5 cm/2 in, in K1,P1 rib (= will be folded in double). Place markers each side, 42 sts for both back and front. Change to needles size 3 mm, and cont working in rnds in St st. When work measures approx. 11 cm/ 4.3 in (measured from the

folding), place markers mid front and back. Inc 1 st both sides of the markers. Rep inc every 2nd rnd altog. 3 times = 96 sts. Sl 24 sts from both front and back on 4 dpn for a leg = 48 sts. Work approx. 10 cm/4 in, in rnds in St st. K all sts tog in pairs = 24 sts rem. Change to needles size 2½ mm, and work 4 rnds in K1,P1 rib. Work same for the other leg. Sew crotch seam. Weave in ends on WS. Fold waist band in double, and sew on WS. Thread elastic.

HAT

Using needles size 2½ mm and light blue yarn, cast on 84 sts. Work 4 rnds in K1,P1 rib. Change to needles size 3 mm, cont working 2 rnds in patt I, patt III as charted (change the basic clr into light blue), cont in patt II (beg with white stripe). When work measures approx. 10 cm, beg crown dec: *K4, K2tog*, rep *-* across the rnd.K2 rnds without dec. Rep dec every 3rd rnd with 1 st less between each dec until 14 sts rem. Break yarn, thread through rem sts and tighten. Weave in ends on WS. Make a tassel, and fasten on top.