

# Viking Kid Mohair and Viking Bjørk

## Sweater

1417-1

<b>Size:</b>	<b>S-M-L-XL</b>
<b>Bust:</b>	<b>93-105-117-128cm</b>
	<b>36.6-41.4-46.1-50.3 in</b>
<b>Length:</b>	<b>65-66-67 -68cm</b>
	<b>25.6-26-26.4-26.8 in</b>
<b>Sleeve length:</b>	<b>50-51-52-53 cm</b>
	<b>19.7-20.1-20.5-20.9 in</b>

**ALTERNATIVE YARNS:** Viking Alpaca Maya ( 85% Superfine alpaca, 15% Highland wool ), Viking Bjørk ( 90% cotton, 10 % merino wool, superwash ), 50 g balls

### Kid Mohair

Off-White, 902:	2-2-2-3 balls
Grey, 915:	2-2-3-3 balls
Beige, 907:	1-1-1-2 balls

### Bjørk

Off-White, 502:	2-2-3-3 balls
Grey, 515:	3-3-4-4 balls
Beige, 507:	1-1-2-2 balls

Circular needle and double pointed needles size 7 mm  
– US 10½ or 11 – UK/Canadian 2

**Gauge:** 12 sts = approx. 10 cm/4 in over St st using needles size 7 mm. **Check your gauge to ensure success.**

Using needles size 7 mm, and double yarn (off-white Maya + off-white Bjørk), cast on 108-120-132-144 sts. Work in rnds 5 cm/2 in in K2,P2 rib. Work 1 rnd in St st, and inc evenly across number of sts to be 112-126-140-154 sts. Place markers at each side, 57-63-71-77 sts for front, and 55-63-69-77 sts for back. Work in patt I as charted, rep until there is altog. 3 stripes. Bind off at each side 8 sts for armholes – 4 sts both sides of the markers. Leave work aside, and knit the sleeves.

### Sleeves

Using needles size 7 mm and double yarn, cast on 24-24-28-28 sts. Work in rnds in rib. Work 1 rnd in St st, and inc evenly across number of sts to be 31-33-35-37 sts. Place a marker mid under sleeve = beg of rnd. Work in patt I as charted, **but** measure from top of the body where to beg patt so that last rnd will be same as last rnd for body. Inc same time 1 st both sides of the marker approx. every 4 cm/1.6 in until there is 53-55-57-59 sts on a rnd. When sleeve measures the given length, or as desired, bind off 8 sts mid under sleeve = 4 sts both sides of the marker. Leave work aside, and knit same for the other sleeve.

### Yoke:

Knit all pieces on same circular needle size 7 mm, with sleeves over the bound-off armhole sts = 186-204-222-240 sts. Beg from back, left shoulder, and check from mid front where to beg patt. Cont working in patt II, and dec as charted.

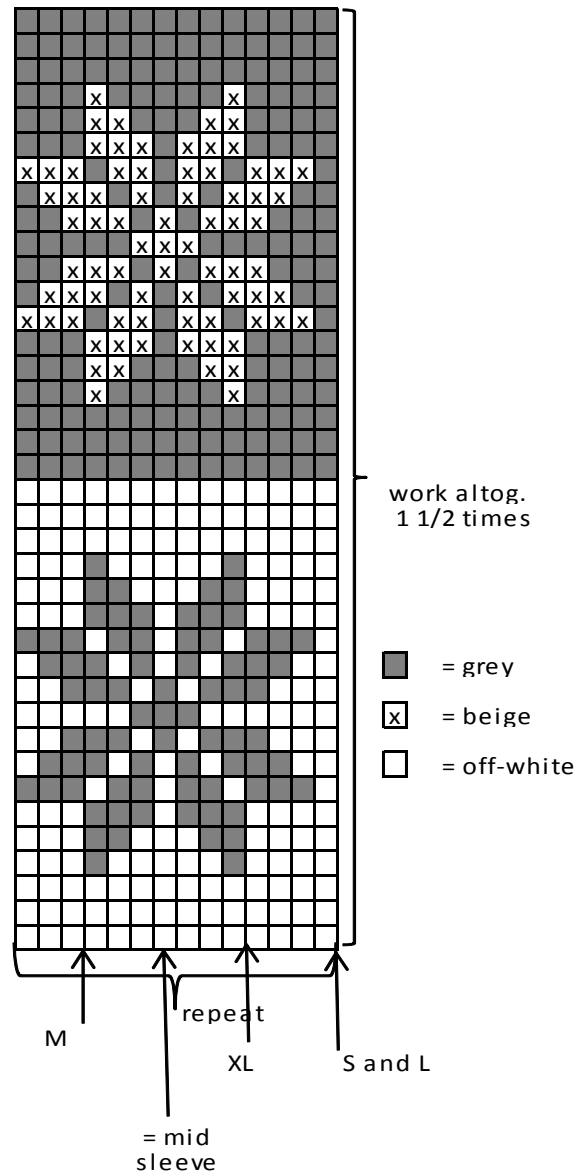
When patt II is ready, work 0-1-2-3 cm/0-0.4-0.8-1.2 in with white yarn, and dec evenly across 1<sup>st</sup> -2<sup>nd</sup> -3<sup>rd</sup> -4<sup>th</sup> rnd number of sts to be 70-72-74-80 sts. Change to grey yarn, and work 2 rnds in St st. Dec evenly across 2<sup>nd</sup> rnd number of sts to be 56-56-60-60 sts. Work in K2,P2 rib until neck band measures approx. 15 cm/5.9 in. Bind off rather loosely in rib.

### Finishing

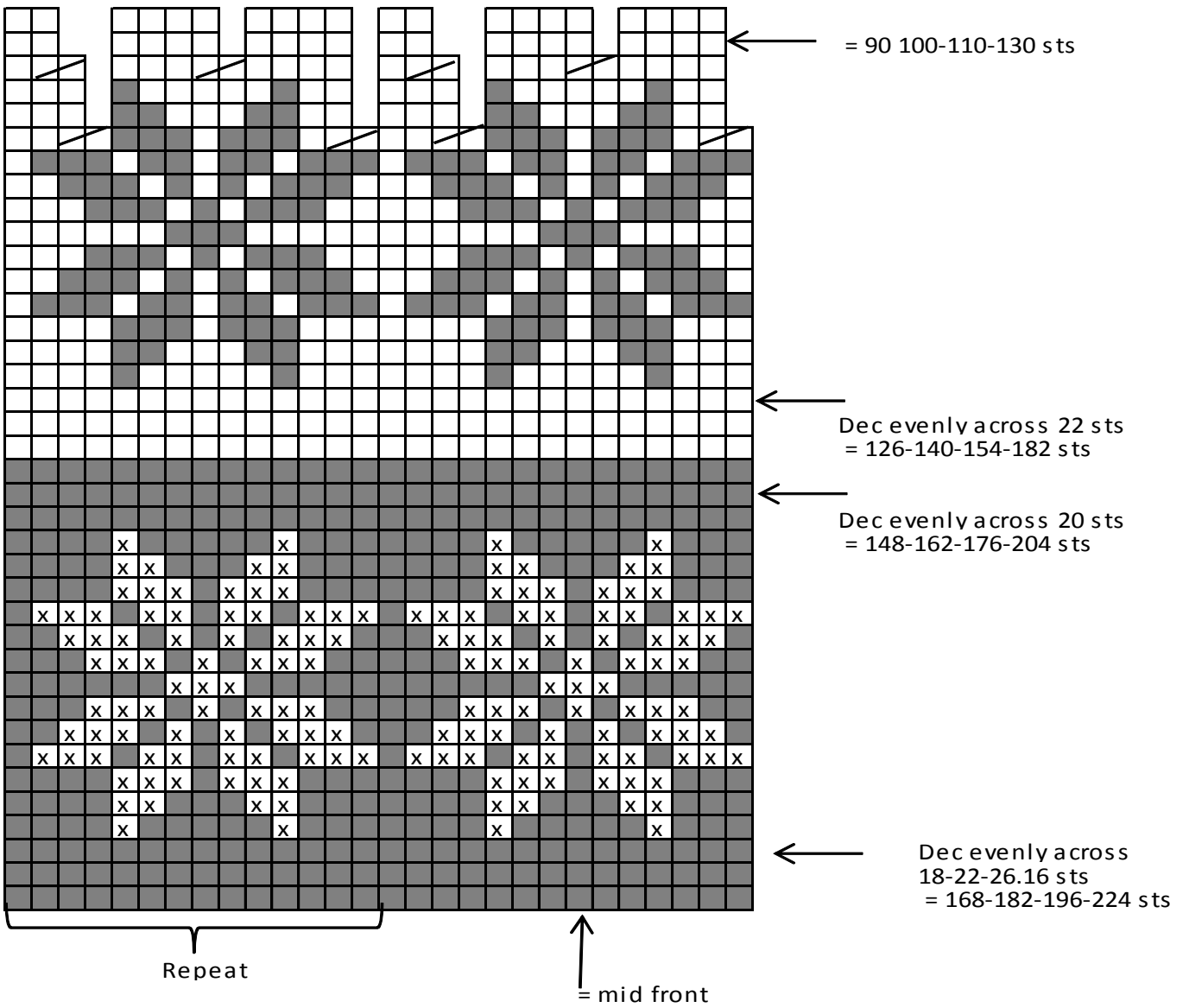
Sew underarm seams.

Fold neckband in double on RS.

Pattern I



**PATTERN II**



- = grey
- = K2tog
- x = beige
- = off-white

# Viking Alpaca Maya

## Sweater

1417-2

<b>Size</b>	<b>XS- S-M-L-XL</b>
<b>Bust:</b>	<b>80 - 87 - 92 - 100 - 110 cm</b> <b>31.5 - 34.3 - 36.2 - 39.4 - 43.3 in</b>
<b>Length:</b>	<b>72 - 72 - 74 - 74 - 74 cm</b> <b>28.3 - 28.3 - 29.1 - 29.1 - 29.1 in</b>
<b>Sleeve length:</b>	<b>49 - 50 - 50 - 51 - 51 cm</b> <b>19.3 - 19.7 - 19.7 - 20.1 - 20.1 in</b>

**ALTERNATIVE YARNS: Viking Alpaca Maya ( 83% Superfine alpaca, 13% merino wool, 5% nylon ), Viking Mohair ( 78 % mohair, 13 % wool, 9% polyamide ), 50 g ball**

Off-White, 702:	2-2-2-3-3 balls
Light Grey, 713:	1-1-1-1-1 ball
Blue, 726:	1-1-1-1-1 ball
Green, 730:	2-2-2-2-2 balls

Circular needle and double pointed needles size 6 and 7 mm – US 10 and 10½ or 11 – UK/Canadian 4 and 2

**Gauge:** 12 sts = approx. 10 cm/4 in over St st using needles size 7 mm. **Check your gauge to ensure success.**

### STRIPE PATT:

13 cm/ in with green – 3 cm/1.2 in with off-white – 13 cm/ in with blue – 10 cm/4 in with light grey – 13 cm/ in with off-white – 10 cm/4 in with -3 cm/1.2 in with off-white – cont with blue yarn until the end

Using needles size 6 mm and off-white yarn, cast on 96-104-112-120-132 sts. Work in rnds approx. 4-4-5-5-5 cm/1.6-1.6-2-2-2 in in K1,P1 rib. Change to needles size 7 mm, and work 1 rnd in St st. Place markers at each side, 48-52-56-60-66 sts for both back and front. Cont working in stripe patt until work measures approx. 52-51-52-51-50 cm/20.5-20.1-20.5-20.1-19.7 in. Divide work at side markers, and finish front and back separately.

### Back

Cont working back and forth in St st with stripes same as before until work measures 72-72-74-74-74 cm/28.3-28.3-29.1-29.1-29.1 in, and armhole measures approx. 20-21-22-23-24 cm/7.9-8.3-8.7-9.1-9.4 in. Bind off.

### Front

Work same as for back. When work measures approx. 62-62-64-64-64 cm/24.4-24.4-25.2-25.2-25.2 in, bind off 12-12-12-14-14 mid sts for neck edge. Finish each side separately. Bind off at neck edge every 2<sup>nd</sup>

row 1x2 sts, and 4x1 st. When front measures same as back, bind off. Work same for the other side, rev all shaping.

### Sleeves

Using needles size 6 mm and off-white yarn, cast on 20-24-24-24-28 sts. Work in rnds 4-4-5-5-5 cm/1.6-1.6-2-2-2 in in K1,P1 rib. Change to needles size 7 mm. Work 1 rnd in St st. Cont working in rnds in St st with stripe patt same as for body. Place a marker mid under sleeve. Inc 1 st both sides of the marker approx. every 3- 3 ½ -3-3-3 cm/1.2-1.4-1.2-1.2-1.2 in until there is 48-50-52-54-58 sts on a rnd. When sleeve measures the given length, or as desired, bind off. Work same for the other sleeve.

### Finishing

Sew shoulder seams.

**Collar:** Using needles size 7 mm, pick or knit up approx. 52-56-56-56-60 sts around the neck edge. Work 5 cm/2 in in K1,P1 rib. Inc 1 st to every purl-st, and cont working in rnds in K1,P2 rib until collar measures approx. 20 cm/7.9 in. Bind off rather loosely in rib.

Sew on sleeves. Weave in all ends on WS.

# Viking Alpaca Maya

## Poncho/Sweater

1417-3

<b>Size</b>	<b>S/M</b>	<b>-</b>	<b>L/XL</b>
<b>Length:</b>	<b>70</b>	<b>-</b>	<b>71 cm</b> <b>27.6 - 28 in</b>

**ALTERNATIVE YARNS: Viking Alpaca Maya ( 83% Superfine alpaca, 13% merino wool, 5% nylon ), Viking Mohair ( 78 % mohair, 13 % wool, 9% polyamide ), 50 g ball**

Grayish Blue, 726:	7	-	8 balls
--------------------	---	---	---------

Circular needle size 5 ½ mm – US 9 – UK/Canadian 5

**Gauge:** 15 sts = approx. 10 cm/4 in over St st using needles size 5½ mm. **Check your gauge to ensure success.**

### Front

Using needles size 5½ mm, cast on 60-68 sts. Work 3 cm/1.2 in in K4,P4 rib. Cont working back and forth in St st until work measures approx. 70-71 cm/27.6-28 in. Dec 1 st at each side inside 1 selvage st every 2<sup>nd</sup> row until 30-36 sts rem. When work measures approx. 85 cm/, and collar measures approx. 15 cm/5.9 in, measured from first dec, bind off rem sts rather loosely.

## Back

Work same as for front, but beg rib with 4 purl-sts.

## Sleeves

Using needles size 5½ mm, cast on 40-40 sts. Work 3 cm/1.2 in in rib same as for front and back. Place markers both on top and mid under sleeve, 20-20 sts for each side. Cont working in rnds in St st. Inc 1 st both sides of the markers every 2<sup>nd</sup> rnd until there is 200-204 sts on a rnd. Cont working until sleeve measures approx. 43-45 cm/16.9-17.7 in, bind off. Work same for the other sleeve.

## Finishing

Place front and back on top of each other, and sew collar seams from RS (approx. 15 cm/5.9 in). Sew on sleeves to the body (approx. 67-68 cm/26.4-26.8 in), and sew rib seams. Weave in all ends on WS.

# Viking Alpaca Maya

## Cardigan

1417-4

<b>Size:</b>	<b>S-M-L-XL-XXL</b>
<b>Bust:</b>	<b>97-107-115-125-130 cm</b> <b>38.2-43.2-45.3-49.2-51.2 in</b>
<b>Length:</b>	<b>100-101-102-103-103 cm</b> <b>39.4-39.8-40.2-40.6-40.6 in</b>
<b>Sleeve length:</b>	<b>50-51-52-52-53 cm</b> <b>19.7-20.1-20.5-20.5-20.9 in</b>

**ALTERNATIVE YARNS : Viking Alpaca Maya ( 85% Superfine alpaca, 15% Highland wool ), Viking Mohair ( 78 % mohair, 13 % wool, 9% nylon ), 50 g ball**

Grey, 715 : 5-6-6-7-7 balls  
Rust, 750: 2-2-2-2-2 balls

Circular needle and double pointed needles size 7 mm  
– US 10½ or 11 – UK/Canadian 2  
+ 7 buttons

**Gauge:** 12 sts = approx. 10 cm/4 in over St st using needles size 7 mm. **Check your gauge to ensure success.**

Using needles size 7 mm and grey yarn, cast on 121-133-143-155-161 sts. Work back and forth in Garter st. When work measures 2 cm/0.8 in, make a buttonhole at right edge, inside 2 sts. Buttonhole: Bind off 2 sts. Next row: Cast on 2 new sts over the bound-off sts. When work measures approx. 3 cm/1.2 in, cont working in St st inside first and last 5 sts = front bands, work in Garter st. Make 6 more buttonholes at right front edge, approx. 12 cm/ in spaced apart. When work measures approx. 76

cm/29.9 in, divide work at sides with 31-34-37-40-41 sts for both fronts, and 59-65-69-75-79 sts for back. Finish back and fronts separately.

## Back

Cont working in St st until work measures 100-101-102-103-103 cm/39.4-39.8-40.2-40.6-40.6 in, and armhole measures approx., 24-25-26-27-27 cm/9.4-9.8-10.2-10.6-10.6 in. Bind off.

## Right front

Cont working in St st, and Garter st over front band sts. Dec for V-neck as foll:

Beg from RS, Garter st over 5 sts for front band, K2tog, St st over rem sts. Rep dec approx. every 3-2 ½-2-2-2 cm/1.2-1-0.8-0.8-0.8 in until 19-21-22-24-25 sts rem. When front measures same as back, slip front band sts on holder, and bind off rem sts.

## Left front

Work same as for right front, but in reverse.

## Sleeves

Using needles size 7 mm and grey yarn, cast on 30-30-32-32-34 sts. Work in rnds 4 cm/1.6 in Garter st. Place a marker mid under sleeve = beg of rnd. Cont working in St st. Inc evenly across 1<sup>st</sup> rnd number of sts to be 34-34-36-36-38 sts. Inc 1 st both sides of the marker approx. every 3 ½ cm/1.4 in (same for all sizes). Work 8 cm/3.1 in St st, then 8 cm/3.1 with rust clr, and then 8 cm/3.1 with green + 8 cm/3.1 in with rust clr yarn. Cont working with grey yarn until sleeve measures the given length, or as desired, and there is 58-60-62-64-66 sts on a rnd. Bind off.

## Finishing

Sew shoulder seams. Sew on sleeves. Slip right front band sts over needles size 7 mm. Cont working in Garter st until front band reaches mid back. Bind off. Work same for left front band. Sew front bands' mid back seam, and sew front bands along neck edge.

## Pockets:

Using needles size 7 mm and rust clr yarn, cast on 20 sts. Work back and forth 4 rows in Garter st. Change to grey yarn, and cont working in St st until pocket measures approx. 17 cm/6.7 in. Bind off.

Sew on pockets on both fronts, approx. 26 cm/10.2 in from cast-on edge, and approx. 8 cm/3.1 in from front edges.

Sew on buttons.

# Viking Alpaca Maya og Alpaca Fine

## Sweater

1417-5

<b>Size:</b>	<b>XS-S-M-L-XL-XXL</b>
<b>Chest:</b>	<b>88-96-104-112-120-128 cm</b> <b>34.6-38.8-40.8-44.1-47.2-50.3 in</b>
<b>Length:</b>	<b>64-65-66-67-68-68 cm</b> <b>25.2-25.6-26-26.4-26.8-26.8 in</b>
<b>Sleeve length:</b>	<b>47-48-49-50-51-51 cm</b> <b>18.5-18.9-19.3-19.7-20.1-20.1 in</b>

**ALTERNATIVE YARNS:** Viking Alpaca Maya ( 85% Superfine alpaca, 15% Highland wool ), Viking Mohair ( 78 % mohair, 13 % wool, 9% nylon ), 50 g ball

**And:** Viking Alpaca Fine ( 85% superfine Alpaca, 15 % highland wool), 50 g ball

Alpaca Maya, white 700 :	4-5-5-6-6-7 balls
Alpaca Maya, turquoise 768 :	1-1-1-1-1 ball
Alpaca Fine, grey 615:	4-5-5-6-6-7 balls

Circular needle and double pointed needles size 6 and 7 mm – US 10 and 10½ or 11 – UK/Canadian 4 and 2

**Gauge:** 12 sts = approx. 10 cm/4 in over St st using needles size 7 mm. **Check your gauge to ensure success.**

### Back

Using needles size 7 mm, and double yarn (= Alpaca Maya, white + Alpaca Fine, grey), cast on, 54-58-62-66-70-74 sts. Work back and forth 8 cm/3.1 in in patt as charted. Cast on to the end of the row 54-58-62-66-70-74 sts = **Front**

There is now 108-116-124-132-140-148 sts on a rnd. Cont working in rnds in patt as charted. Place markers at each side, 54-58-62-66-70-74 sts for both front and ack. Cont working until mid front measures 41 cm/16.1 in (same for all sizes). Bind off 8 sts at each side for armholes = 4 sts both sides of the markers.

Leave work aside, and knit the sleeves.

### Sleeves

Using needles size 6 mm and turquoise Maya (single thread), cast on 32-32-32-36-36-36 sts. Work 2 rnds in K2,P2 rib. Change to double yarn (= Maya, white + Alpaca Fine, grey), and cont working in rib until work measures 6-6-6-6-7-7 cm/2.4-2.4-2.4-2.4-2.8-2.8 in. Change to needles size 7 mm. Work in patt as charted. Place a marker mid under sleeve = beg of rnd. Inc evenly across 1<sup>st</sup> rnd number of sts to be 36-40-40-44-44-48 sts. Inc 1 st both sides of the marker approx. every, 6 ½-8-7-8 ½-7-8 ½ cm/2.6-3.1-2.8-3.3-2.8-3.3 in. When sleeve measures 47-48-49-50-51-51 cm/18.5- in, or as desired, and there is 48-50-52-54-

56-58 sts on a rnd, bind off 8 sts mid under sleeve = 4 sts both sides of the marker.

Leave work aside, and knit same for the other sleeve.

### Yoke

Slip all pieces on same circular needle, with sleeves over the bound-off armhole sts = 172-184-196-208-220-232 sts. Place markers at each 4 seam line for raglan-dec. Dec as foll:

Work until 2 sts rem before a marker, sl 1 st, K1, pssso, K2tog. Rep dec at each 4 seam line every 2<sup>nd</sup> rnd until 60-56-60-64-68-64 sts rem on a rnd. = 14-16-17-18-19-21 dec.

### Collar

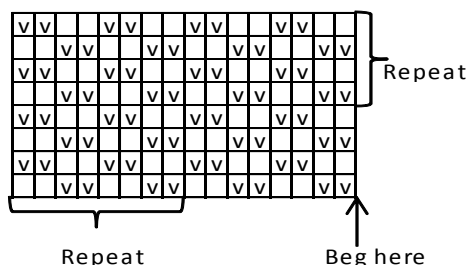
Change to needles size 6 mm. Work 1 rnd in St st, and adjust number of sts to be 56-56-60-60-64-64 sts.

Work in rnds in K2,P2 rib until collar measures 17 cm/6.7 in. Change to turquoise Maya (single thread), and work 2 rnds in rib. Bind off rather loosely in rib.

### Finishing

Sew underarm seams. Weave in all ends on WS.

Fold collar in double on RS.



□ = Knit on RS, purl on WS

▣ = Purl on RS, knit on WS

# Viking Alpaca Maya

## Sweater

1417-6

<b>Size:</b>	<b>XS-S-M-L-XL</b>
<b>Bust:</b>	<b>80 - 87 - 92 - 100 - 110 cm</b> <b>31.5 - 34.3 - 36.2 - 39.4 - 43.3 in</b>
<b>Length:</b>	<b>58 - 60 - 60 - 61 - 62 cm</b> <b>22.8 - 23.6 - 23.6 - 24 - 24.4 in</b>
<b>Sleeve length:</b>	<b>49 - 50 - 50 - 51 - 51 cm</b> <b>19.3 - 19.7 - 19.7 - 20.1 - 20.1 in</b>

**ALTERNATIVE YARNS:** Viking Alpaca Maya ( 83% Superfine alpaca, 13% merino wool, 5% nylon ), Viking Mohair ( 78 % mohair, 13 % wool, 9% polyamide ), 50 g balls

Light Grey, 713:	2-2-3-3 balls
Black, 703:	2-2-3-3 balls

Circular needle and double pointed needles size 6 and 7 mm – US 10 and 10½ or 11 – UK/Canadian 4 and 2

**Gauge:** 12 sts = approx. 10 cm/4 in over St st using needles size 7 mm. **Check your gauge to ensure success.**

### Body

Using needles size 6 mm and back yarn, cast on 96-104-112-120-132 sts. Work in rnds approx. 3 cm/1.2 in in K2,P2 rib (same for all sizes). Change to needles size 7 mm, and work 1 rnd in St st. Place markers at each side, 48-52-56-60-66 sts for both back and front. Cont working in rnds in St st with stripes as foll: \*4 rnds with light grey – 4 rnds with black\*, rep \*-\*. When work measures approx. 33-34-33-33-32 cm/13-13.4-13-13-12.6 in, divide work mid front. Cont working back and forth, and bind off 1 st at each edge every 4<sup>th</sup> row. When work measures 38-39-38-38-37 cm/15-15.4-15-15-14.6 in, bind off 8 sts at each side (4 sts both sides of the markers). Finish back and front separately.

### Back

Cont working back and forth in St st with stripes same as before until work measures 58-60-60-61-61 cm/22.8-23.6-23.6-24-24 in, and armhole measures approx. 20-21-22-23-24 cm/7.9-8.3-8.7-9.1-9.4 in. Bind off.

### Front

Work same as for back. Dec for V-neck altog. 11-12-12-12-13 times. Cont working until front measures same as back. Bind off. Work same for the other side, rev all shaping.

### Sleeves

Using needles size 6 mm and black yarn, cast on 20-24-24-24-28 sts. Work in rnds 3 cm/1.2 in in K2,P2 rib. Change to needles size 7 mm. Work 1 rnd in St st. Cont working in stripe patt same as for body. Place a marker mid under sleeve. Inc 1 st both sides of the marker approx. every 3-3 ½ - 3 ½ - 3-3 cm/1.2-1.4-1.4-1.2-1.2 in until there is 48-50-52-54-58 sts on a rnd. Cont working until sleeve measures 3 cm/1.2 in less than given length. Divide work mid under sleeve, and work back and forth 3 cm/1.2 in in St st.

### Finishing

Sew shoulder seams.

**Neck band:** Beg from right shoulder. Using needles size 6 mm and black yarn, pick or knit up approx. 88-88-92-92-96 sts along neck edge. Place a marker mid front. Cont working in rnds in K2,P2 rib. Dec 1 st both sides of the marker every rnd. When neck band

measures approx. 3 cm/1.2 in, bind off in rib. Sew on sleeves, and underarm seams. Weave in all ends on WS.

## Viking Alpaca Maya og Alpaca Fine

### Cardigan

1417-7

**Size:** S-M-L-XL-XXL

**Bust:** 97-107-115-123-130 cm

38.2-42.2-45.3-48.4-51.2 in

**Length:** 79-80-81-82-83 cm

31.1-31.5-31.9-32.3-32.7 in

**Sleeve length:** 50-51-52-52-53 cm

19.7-20.1-20.5-20.5-20.9 in

**ALTERNATIVE YARNS:** Viking Alpaca Maya ( 85% Superfine alpaca, 15% Highland wool ), Viking Mohair ( 78 % mohair, 13 % wool, 9% nylon ), 50 g ball

**And:** Viking Alpaca Fine ( 85% superfine Alpaca, 15 % highland wool), 50 g all

Alpaca Maya white, 700: 4-5-5-6-6 balls

Alpaca Fine grey, 615: 6-7-7-7-8 balls

Circular needles and double pointed needles size 6 and 7 mm – US 10 and 10½ or 11 – UK/Canadian 4 and 2  
+ grey zipper

**Gauge:** 12 sts = approx. 10 cm/4 in over St st using needles size 7 mm. **Check your gauge to ensure success.**

Using needles size 6 mm and double yarn (= Alpaca Maya white + Alpaca Fine, grey, cast on 112-124-134-144-152 sts. Work back and forth 5 cm/2 in in St st. Purl 1 row from RS = folding edge, and cast on 1 st at each edge (new sts are for front edges, worked in Garter st). Cont working in St st for another 5 cm/2 in. Change to needles size 7 mm, and cont working until work measures 15 cm/ in, measured from folding edge. Place markers at each side, 29-32-35-37-39 sts for each front, and 58-64-68-74-78 sts for back. Bind off for pockets as foll:

Beg from RS, work until 6-7-8-8-9 sts rem before 1<sup>st</sup> side marker, turn (leave rem sts waiting), purl 23-25-27-29-30 first sts of right front, turn. Knit until 3 sts rem, K2tog + K1, turn. Rep dec every 2<sup>nd</sup> row until pocket opening measures approx. 15 cm/5.9 in (measured upright, not slanting) Leave right front sts waiting, and cont with mid piece sts. K1 = selvage st, inc 1 st, knit until 24-26-28-30-31 sts rem, inc 1 st, and K1 = selvage st, turn. Leave rem left front sts waiting.

Cont working back and forth same as before, but inc 1 st at each edge every 2<sup>nd</sup> row inside selvage sts until work measures same as right front. Leave mid sts waiting, and work left front with 23-25-27-29-30 sts. Dec same as for right front, but in reverse.

Slip all pieces on same needle again, and cont working back and forth same as before until work measures 55 cm/21.7 in, measured from folding edge (same for all sizes).

Bind off 8 sts at each side for armholes = 4 sts both sides of the markers. Leave work aside, and knit the sleeves.

### Sleeves

Using needles size 6 mm and double yarn (= same as for body), cast on 34-34-34-36-36 sts. Work in rnds 5 cm/2 in in St st + purl 1 rnd = folding edge + 5 cm/2 in in St st. Place a marker mid under sleeve = beg of rnd. Change to needles size 7 mm. Cont working in St st. Inc 1 st both sides of the marker approx. every 5 ½-5-4 ½-4 ½-4 cm/2.2-2-1.8-1.8-1.6 in until there is 50-52-54-56-58 sts on a rnd. When sleeve measures the given length, or as desired, measured from folding edge, bind off 8 sts mid under sleeve = 4 sts both sides of the marker. Leave work aside, and knit same for the other sleeve.

### Yoke

Slip all pieces on same circular needle, with sleeves over the bound-off armhole sts = 184-200-214-228-240 sts. Place markers at each 4 seam line.

Beg from RS, and cont working back and forth same as before, and beg raglan-dec as foll: Work until 3 sts rem before a marker, sl 1 st, K1, pssso, K2, K2tog. Rep dec at each 4 seam line every 2<sup>nd</sup> rnd until 56-64-70-68-72 sts rem. Change to needles size 6 mm and double grey Alpaca Fine. Work 1 row in St st, and dec evenly across number of sts to be 46-46-46-50-50 sts. Cont working in K2,P2 rib inside selvage sts. When rib measures 4 cm/1.6 in, bind off 2 first and last sts. Work 4 cm/1.6 in more in rib. Bind off rather loosely.

### Pockets

Using needles size 6 mm and double grey Alpaca Fine, cast on 38 sts. Place a marker in mid = 19 sts on each side. Work in St st, and dec 1 st every 2<sup>nd</sup> row both sides of the marker until work measures 16 cm/6.3 in. Bind off. fold pocket in double with WS outwards, and sew to the bound-off sts = top of the pocket. Sew tog cast-on edge = bottom of the pocket. Sew pockets to the slanting edges of the body.

**Pocket edges:** Using needles size 6 mm and double Alpaca Fine, pick or knit up 22 sts from right front pocket's slanting edge. Work back and forth in K2,P2 rib. When edge measures approx. 6 cm/2.4 in, bind off rather loosely.

Work same for left pocket edge.

Fold pocket edges in double and sew on WS.

### Finishing

Sew underarm seams.

Fold neck band in double, and sew on WS.

Fold lower edge and sleeve edges in double, and sew on WS. Sew on a zipper.

## Viking Kid Mohair

### Sweater

1417-8

<b>Size:</b>	<b>XS-S-M-L</b>
<b>Bust:</b>	<b>85-90-95-102 cm</b>
	<b>33.5-35.4-37.4-40.2 in</b>
<b>Length:</b>	<b>73-74-75-76 cm</b>
	<b>28.7-29.1-29.5-29.9 in</b>
<b>Sleeve length:</b>	<b>32-33-34-35 cm</b>
	<b>12.6-13-13.4-13.8 in</b>

**ALTERNATIVE YARNS: Viking Kid Mohair (70% Kid-Mohair, 18 % merino wool, 12 % nylon), 50 g ball**

Beige, 907: 3-3-4-4 balls  
Grey, 915: 1-1-1-1 ball

Circular needle and double pointed needles size 6 and 7 mm – UK 10 and 10½ or 11 – US/Canadian 4 and 2  
Crochet hook size 5,5 mm - US I/9 – UK/Canadian 5

**Gauge:** 12 sts = approx. 10 cm/4 in over St st using needles size 7 mm. **Check your gauge to ensure success.**

Using needles size 6 mm and beige yarn, cast on 100-108-112-120 sts. Work in rnds in K2,P2 rib. When work measures 25 cm/9.8 in, change to needles size 7 mm. Work 1 rnd in St st, and adjust number of sts to be 102-108-114-122 sts. Cont working in St st until work measures 53 cm/20.9 in. Place markers each side, 51-55-57-61 sts for front, and 51-53-57-61 sts for back. Divide work at side markers, and finish back and front separately.

### Back:

Work back and forth 4-5-6-7 cm/1.6-2-2.4-2.8 in in St st. Bind off mid st = split. Finish each side separately. Cont working in St st until work measures 73-74-75-76 cm/28.7-29.1-29.5-29.9 in, and armhole measures approx. 20-21-22-23 cm/7.9-8.3-8.7-9.1 in. Bind off.

### Front

Cont working back and forth in St st until work measures 63-64-65-66 cm/24.8-25.2-25.6-26 in. Bind off mid 9-11-13-15 sts for neck edge. Finish each side separately.

**Right front:** Work back and forth in St st. Bind off at neck edge every 2<sup>nd</sup> row 1x3 sts, 2x2 sts, and 2x1 st =

12-13-13-14 sts rem for shoulder. Cont working until front measures same as back.

### Left front

Work same as for right front, but rev all shaping.

### Sleeves

Using needles size 6 mm and beige yarn, cast on 32-36-40-44 sts. Work in rnds 7 cm/2.8 in in rib same as for body. Change to needles size 7 mm. Place a marker mid under sleeve = beg of rnd. Cont working in St st. Inc 1 st both sides of the marker approx. every 3-3-3 ½-4 ½ cm/1.2-1.2-1.4-1.8 in until there is 48-52-54-56 sts on a rnd. When work measures 32-33-34-35 cm/12.6-13-13.4-13.8 in, bind off rather loosely.

### Finishing

Sew shoulder seams. Sew on sleeves.

### Neck band

Beg from WS. Using crochet hook size 5½ mm and beige yarn, crochet a sl st-row along neck edge. Turn, crochet a dc-row. Break yarn, and draw through last loop.

Weave in all ends on WS.

### Bow

Using needles size 7 mm and grey yarn, cast on 12 sts. Work back and forth in St st. When work measures 12 cm/4.7 in, bind off.

Band for bow: Using needles size 7 mm and grey yarn, cast on 5 sts. Work back and forth approx. 7 cm/2.8 in in K1,P1 rib. Bind off.

Dampen the bow slightly. Tie band round the bow, tighten slightly, and sew ends mid back.

Make one more bow.

Sew bows to the split mid back, one at neck edge, the other approx. mid split.

## Viking Alpaca Maya

### Poncho with hood

1417-9

Size:

One size

Length:

45 cm

17.7 in

**ALTERNATIVE YARNS : Viking Alpaca Maya ( 85% Superfine alpaca, 15% Highland wool ), 50 g ball**

Blue, 927:

4 balls

Needles size 6 and 7 mm – US 10 and 10½ or 11 – UK/Canadian 4 and 2

**Gauge:** 12 sts = approx. 10 cm/4 in over St st using needles size 7 mm. **Check your gauge to ensure success.**

Using needles size 7 mm, cast on 54 sts. Work back and forth approx. 3 cm/1.2 in in K3,P3 rib. Cont working in Garter st as foll: ∞ \* K54, turn, K54. K45, turn K45. K36, turn, K36. K27, turn, K27. K18, turn, K18. K9, turn, K9\*. Rep \*-\* 8 times. Work 12 rows in Garter st over all sts ∞.

Rep ∞ - ∞ altog 4 times, but after last turning, end with approx. 3 cm/1.2 in in K3,P3 rib. Bind off in rib.

**Hood and neck band:** Beg after rib. Using needles size 6 mm, pick or knit up 69 sts around neck edge.

Work back and forth approx. 5 cm/2 in in K3,P3 rib. Cont in rib with 6 first and last sts, and St st over rem 57 sts. Place a marker round mid back st.

Next row (= RS): Inc 1 st to each 13 mid back sts = 82 sts on a row. Cont working back and forth. When hood measures approx. 26 cm/10.2 in (measured from the inc sts), dec 1 st both sides of the marker every 2<sup>nd</sup> row 3 times. Divide work mid back, and join top seam.

**Finishing:** Place front bands on top of each other, and sew on 3 buttons for embellishment (to close the poncho from mid front, see photo).



# Viking Alpaca Maya og Alpaca Fine

## Sweater

1417-10

**Size:** XS-S-M-L-XL

**Bust:** 85-90-102-110-120 cm  
33.5-35.4-40.2-43.3-47.2 in

**Length:** 64-65-66-67-68 cm  
25.2-25.6-26-26.4-26.8 in

**Sleeve length:** 48- 49-50-51-52 cm  
18.9-19.3-19.7-20.1-20.5 in

**ALTERNATIVE YARNS:** Viking Alpaca Maya ( 85% Superfine alpaca, 15% Highland wool ), Viking Mohair ( 78 % mohair, 13 % wool, 9% nylon ), 50 g ball

**And:** Viking Alpaca Fine ( 85% superfine Alpaca, 15 % highland wool), 50 g ball

Alpaca Maya, blue 727 : 4-5-5-6-6 balls  
Alpaca Fine, blue 627: 4-5-5-6-6 balls

Circular needle and double pointed needles size 6 and 7 mm – US 10 and 10½ or 11 – UK/Canadian 4 and 2

**Gauge:** 12 sts = approx. 10 cm/4 in over St st using needles size 7 mm. **Check your gauge to ensure success.**

**NB: Whole garment is worked in double yarn, Maya + Alpaca Fine.**

**Seed st: 1<sup>st</sup> row: K1, P1. 2<sup>nd</sup> row: Knit all purl-sts, purl all knit-sts. Rep 2<sup>nd</sup> row.**

**Make raglan-dec on right side of the sweater, and for right sleeve on left side.**

Using needles size 6 mm and double yarn, Alpaca Maya + Alpaca Fine, cast on 102-108-120-132-144 sts. Work in rnds 7 cm/2.8 in in K3,P3 rib. Change to needles size 7 mm. Work 1 rnd in St st, and cont as foll: Seed st over 5 sts, inc 3 sts over next 12 sts = patt I (= 15 sts), Seed st over rem sts. There is now 105-111-123-135-147 sts on rnd. Place markers at each side, 55-57-63-69-75 sts for front, and 50-54-60-66-72 sts for back. Cont working as established until work measures 44 cm/17.3 in, but bind off on last rnd at right side 8 sts for armhole = 4 sts both sides of the marker. Leave work aside, and knit right sleeve.

### Right sleeve

Using needles size 6 mm and double yarn, Alpaca Maya + Alpaca Fine, cast on 18-24-24-24-24 sts. Work in rib same as for body. Change to needles size 7 mm. Work 1 rnd in St st, and inc evenly across number of sts to be 28-30-32-32-32 sts. Place a

marker mid under sleeve = beg of rnd. Cont working in Seed st. Inc 1 st both sides of the marker approx. every 5-5-4 ½-4-4 cm/2-2-1.8-1.6-1.6 in until there is 44-46-50-52-54 sts on a rnd. When sleeve measures the given length, or as desired, bind off 8 sts mid under sleeve = 4 sts both sides of the marker.

### Yoke

Beg from left side. Slip all body sts + right sleeve sts on same needle size 7 mm = 133-141-157-171-185 sts. Place markers at both 2 seam line. Beg raglan-dec as foll: beg from left side, work in Seed st, and patt I same as before until 2 sts rem before 1<sup>st</sup> marker, sl 1 st, K1, pssso, K2tog. Rep dec 2<sup>nd</sup> marker, work in Seed st over rem sts. Cont working back and forth as established, and rep raglan-dec every 4<sup>th</sup> row (on RS) 2 times, an after that every 2<sup>nd</sup> row. When there is altog. 13-13-16-17-18 raglan-dec, dec 3 sts evenly across patt I = 78-86-90-100-110 sts.

### Finishing:

Join left shoulder seam, 12-13-15-17-22 sts.

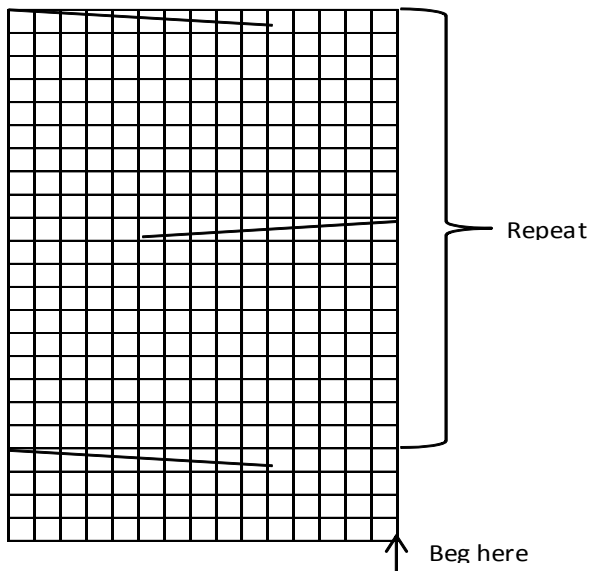
### Left sleeve

Cast on and work same for rib as for right sleeve. Change to needles size 7 mm. Work 1 rnd in St st, and inc evenly across number of sts to be 32-34-36-36-36 sts. Place a marker mid under sleeve = beg of rnd. Cont working in Seed st. Inc 1 st both sides of the marker approx. every 5-5-4 ½-4-4 cm/2-2-1.8-1.6-1.6 in until there is approx. 48-50-54-56-58 sts on a rnd, and sleeve top's width measures the armhole's width. When sleeve measures same as right sleeve before raglan-dec, bind off rather loosely. Sew on sleeve.

### Neck band

Cont working in K3,P3 rib with needles size 6 mm over rem 54-60-60-66-66 sts. When collar measures approx. 20 cm/9.8 in, bind off rather loosely. Weave in all ends on WS. Fold collar in double on RS.

**PATTERN I**



 = Slip 5 sts on cn and hold to front  
K5, knit sts from cn

 = Slip 5 sts on cn and hold to back,  
K5, knit sts from cn

 = knit on RS, purl on WS