

Viking Alpaca Fine

Embla cardigan

1416-1

Size: S- M- L- XL -XXL

Bust: 89 - 98 - 106 - 115 - 123 cm

35-38.6-41.8-45.3-48.4 in

Length: 65 - 66 - 67 - 69 - 70 cm

25.6-26-26.4-27.2-27.6 in

Sleeve length: 48 - 50 - 51 - 51 - 52 cm

18.9-19.7-20.1-20.1-20.5 in

ALTERNATIVE YARNS: Viking Alpaca Fine

(85% Superfine Alpaca, 15 % Highland wool),

Viking Baby ull (100 % merino wool ,superwash),
50 g ball

Light Grey, 613: 6- 7- 7- 8- 8 balls

Charcoal, 603: 3- 3- 3- 4- 4 balls

White, 600: 2- 2- 3- 3- 3 balls

Circular needle size 2 ½ and 3 mm – US 1 or 2 and 2
or 3 – US/Canadian 13 or 12 and 11
+ 9 buttons

Gauge: 28 sts = approx. 10 cm/4 in over St st using
needles size 3 mm. **Check your gauge to ensure
success.**

When working in a patt with 2 clrs, it's important to
maintain the order of yarns over your finger. Always
keep the darker clr in front throughout the whole
project.

Using needles size 2½ mm and charcoal clr yarn, cast
on 261 – 285 – 309 – 333 – 357 sts. Work back and
forth approx. 6 cm/2.4 in in K1,P1 rib. Make a
buttonhole on last row to the right edge inside 4 sts.
Buttonhole: Bind off 3 sts. Next row: Cast on 3 new
sts over the bound-off sts. Slip first and last 10 sts on
holders (= front band sts). Change to needles size 3
mm, and work in patt A. **Same time** cast on 4 new sts
to the end of first row. These sts will be cut open later
on (not incl. in the number of sts), and they are
worked without patt.

There is now 241- 265 – 289 – 313 – 337 sts on a row
(front band sts are not incl.). Place markers at each
side, 58 – 64 – 70 – 76 – 82 sts for each front, and 125
– 137 – 149 – 161 – 173 sts for back.

When patt A is ready, cont working in St st with light
grey yarn until work measures approx. 41 – 41 – 41 –
42 – 43 cm/16.1-16.1-16.1-16.5-16.9 in. Bind off on
last rnd 12 sts at each side for armholes (6 sts both
sides of the markers). Leave work aside, and knit the
sleeves.

Sleeves: Using needles size 2½ mm and charcoal clr
yarn, cast on 58 – 60 – 62 – 62 – 64 sts. Work in rnds
approx. 5 – 6 – 6 – 6 – 6 cm/2-2.4-2.4-2.4-2.4 in in

K1,P1 rib. Change to needles size 3 mm. Work in patt
A as charted, and inc evenly across 1st rnd number of
sts to be 63 – 67 – 69 – 71 – 71 sts. Place a marker
beg of rnd (= mid under sleeve). Inc 1 st both sides of
the marker approx. every 1 ½ – 2 – 1 ½ – 1 ½ – 1 ½
cm/1.6-0.8-0.6-0.6-0.6 in. When patt A is ready, cont
working in St st with light grey yarn until there is 109
– 109 – 121 – 121 – 121 sts on a rnd, and sleeve
measures approx. 48 – 50 – 51 – 51 – 52 cm/18.9-
19.7-20.1-20.1-20.5 in. Bind off on last rnd 12 sts mid
under sleeve (6 sts both sides of the marker). Work
same for the other sleeve.

Yoke: Knit all pieces on same circular needle, with
sleeves over the bound-off armhole sts = 411 – 435 –
483 – 507 – 531 sts on a rnd. Work 1 rnd in St st and
adjust number of sts to be 409 – 433 – 481 – 505 –
529 sts. Work in patt B, and dec as charted. There is
now 86 – 91 – 101 – 106 – 111 sts on a rnd. Leave
work aside, and knit the front bands.

Finishing: Dampen the garment slightly from WS.
Sew 2 dense zigzag seams mid front. Cut open
between seams. Sew normal zigzag over cut edges.

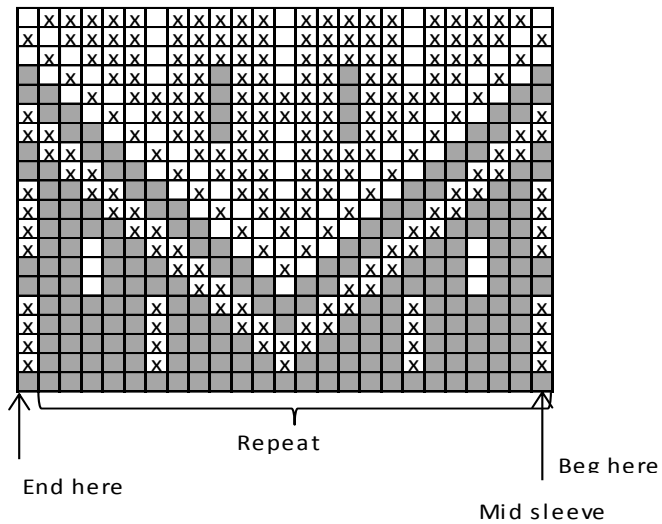
Front bands: Slip 10 sts without buttonhole on
needles size 2½ mm. Cast on with charcoal clr yarn 5
new sts to edge facing the body (= seam allowance,
work in St st). Cont working until front band
measures up to neck edge (stretch slightly when
measured). Bind off seam allowance sts, and slip rem
sts on holder. Work same for the other front band, but
with 9 buttonholes. First buttonhole has already been
made. Make last one on last row before neck band,
and rest evenly spaced apart.

Neckband: Beg from right front band. Slip sts from
holder on needles size 2½ mm. Using charcoal yarn,
knit sts from body on same needle, and finally slip left
front band sts on the needle = 106 – 111 – 121 – 126 –
131 sts on a row. Adjust number of sts to be 105-111-
121-125-131 sts. Cont working back and forth in
K1,P1 rib. When neck band measures 3 – 4 – 4 – 4 – 4
cm/1.2-1.6-1.6-1.6-1.6 in, bind off in rib first and last
10 sts. Cont working until neck band measures 6 – 8 –
8 – 8 – 8 cm/2.4-3.1-3.1-3.1-3.1 in. Bind off rather
loosely in rib.

Finishing: Sew on front bands, and sew seam
allowances over cut edges. Fold neck band in double,
and sew on WS. Sew underarm seams. Sew on 9
buttons.

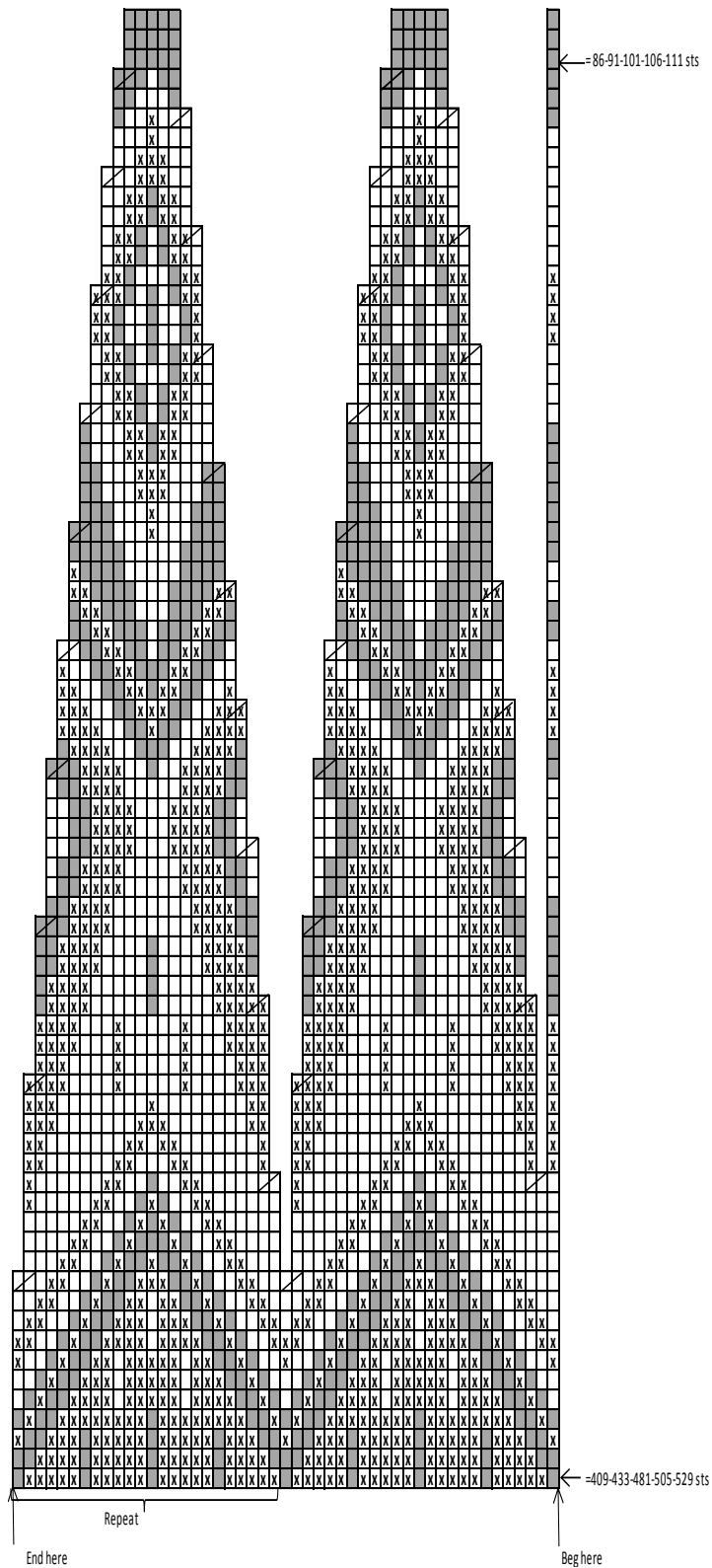
Weave in all ends on WS.

Pattern A



- = White
- = Grey
- = Black
- = K2tog

PATTERN B



Viking Alpaca Fine

Fana cardigan

1416-2

Size: XS- S- M- L- XL -XXL

Bust: 85 - 90 - 94 - 98 - 111 - 120 cm

33.5-35.4-37-38.6-43.7-47.2 in

Length: 52- 53 - 53 - 54 - 55 - 56 cm

20.5-20.9-20.9-21.3-21.7-22 in

Sleeve length: 48 - 49 - 50 - 51 - 52 - 52 cm

18.9-19.3-19.7-20.1-20.5-20.5 in

ALTERNATIVE YARNS: Viking Alpaca Fine

(85% Superfine Alpaca, 15 % Highland wool),

Viking Baby ull (100 % merino wool ,superwash),

50 g ball

Charcoal, 603: 5-5-5-6-6-7 balls

Off-White, 602: 3-3-4-4-5-5 balls

Rust, 650: 1-1-1-1-1-1 ball

Beige, 607: 1-1-1-1-1-1 ball

Circular needle size 2 ½ and 3 mm – US 1 or 2 and 2 or 3 – UK/Canadian 13 or 12 and 11

+ 10 buttons

Gauge: 28 sts = approx. 10 cm/4 in over St st using needles size 3 mm. **Check your gauge to ensure success.**

When working in a patt with 2 clrs, it's important to maintain the order of yarns over your finger. Always hold the darker clr in front throughout the whole project.

Using needles size 2½ mm and charcoal clr yarn, cast on 247 – 259 – 271 – 283 – 319 – 343 sts. Work back and forth 2 cm/0.8in in K1,P1 rib. Make a buttonhole on last row to the right edge inside 3 sts. Buttonhole: Bind off 3 sts. Next row: Cast on 3 new sts over the bound-off sts.

Slip first and last 8 sts on holders (= front band sts). Change to needles size 3 mm. Work in patt A, and cast on 4 new sts to the end of first row. Purl these new sts every rnd (= to be cut open later on). There is now 231 – 243 – 255 – 267 – 303 – 327 sts on a rnd (4 new sts not incl). Place markers at each side, 57 – 60 – 63 – 66 – 75 – 81 sts for each front, and 117 – 123 – 129 – 135 – 153 – 165 sts for back.

Work in patt A until work measures approx. 24 – 25 – 25 – 26 – 27 – 28 cm/9.4-9.8-9.8-10.2-10.6-11 in (end with a complete white stripe). Work in patt I. Bind off on last rnd 12 sts at each side for armholes (6 sts both sides of the markers). Leave work aside, and knit the sleeves.

Sleeves: Using needles size 2½ mm and rust clr yarn, cast on 54 – 54 – 60 – 60 – 66 – 66 sts. Work in rnds

approx. 2 cm/0.8 in in K1,P1 rib. Change to needles size 3 mm. Work in patt B, and inc as charted, 1 st to last st until there is 55 – 55 – 61 – 61 – 67 – 67 sts on a rnd. Place a marker beg of rnd (= mid under sleeve). Inc 1 st both sides of the marker approx. every 1 ½ cm/0.6 in (same for all sizes).

When sleeve measures approx. 43 – 44 – 45 – 46 – 47 – 47 cm/ in (end with a complete white stripe), work patt I. There is now 101 – 107 – 113 – 119 – 125 – 125 sts on a rnd, and sleeve measures approx. 48 – 49 – 50 – 51 – 52 – 52 cm/18.9-19.3-19.7-20.1-20.5-20.5 in. Note! End with same rnd as body. Bind off on last rnd 12 sts mid under sleeve (6 sts both sides of the marker). Work same for the other sleeve.

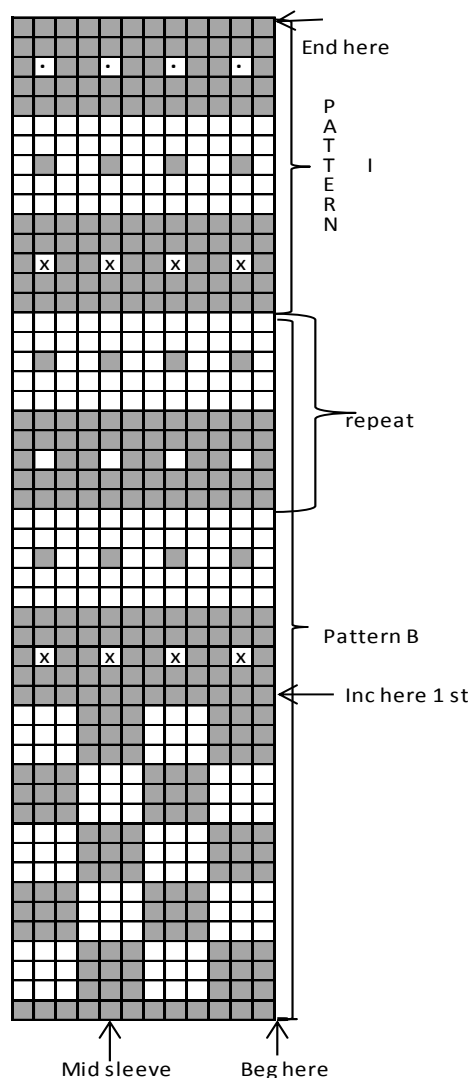
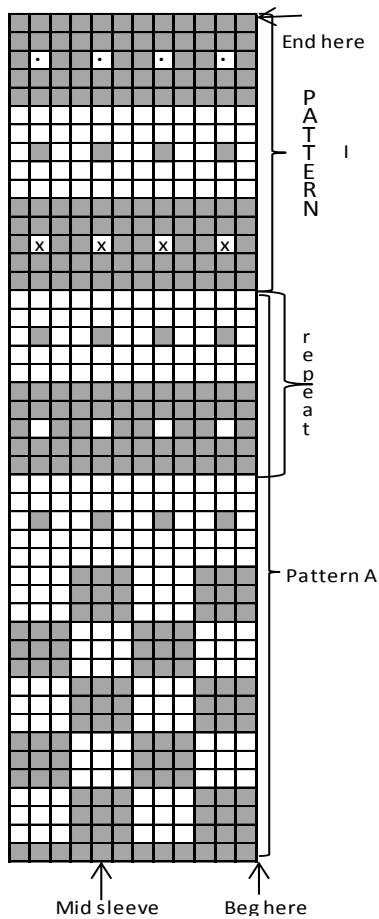
Yoke: Knit all pieces on same circular needle, with sleeves over the bound-off armhole sts = 385 – 409 – 433 – 457 – 505 – 529 sts on a rnd. Work in patt C, and dec as charted. There is now 81-86-91-96-106-111 sts on a rnd. Leave work aside, and knit front bands.

Finishing: Dampen the garment slightly from WS. Sew 2 dense zigzag seams mid front. Cut open between the seams. Sew normal zigzag over cut edges.

Front bands: Slip 8 sts without buttonhole on needles size 2½ mm. Using charcoal yarn, cast on 5 new sts to the edge facing the body (= seam allowance, work in St st). Cont working until front band measures up to neck edge (it's important that front band is not too long). Bind off seam allowance sts, and leave rem sts on holder. Work same for the other front band, but make 10 buttonholes. First buttonhole has already been made. Make last one on last row before neck band, rest evenly spaced apart.

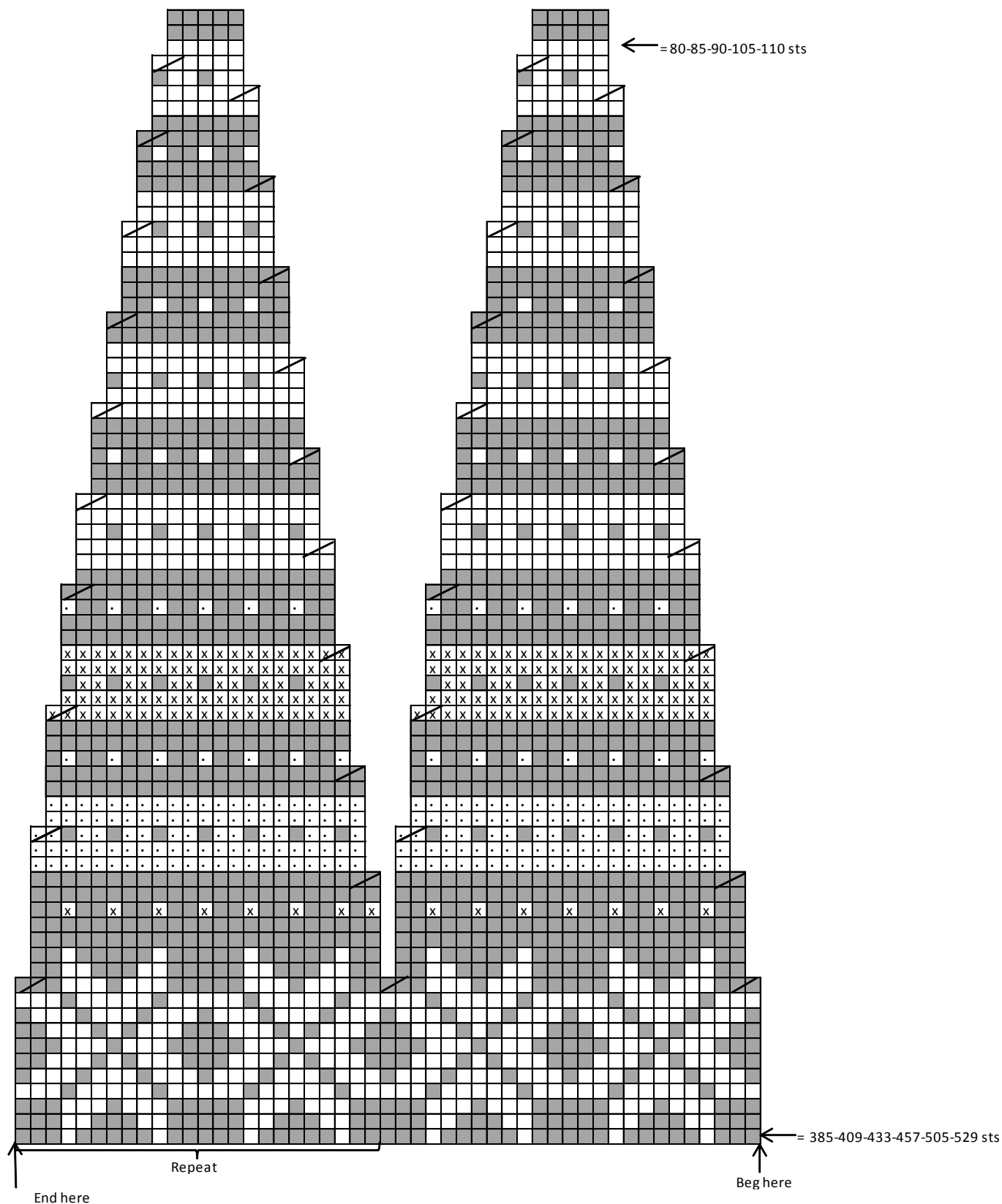
Neck band: Beg from right front. Slip sts from holder on needles size 2½ mm, knit sts from body on the same needle, and finally slip on left front band sts = 96 – 101 – 106 – 111 – 121 – 126 sts on a row. Sizes XS, M and XXL, bind off 1 st mid back = 95-101-105-111-121-125 sts on a row. Cont working back and forth in K1,P1 rib. When neck and measures approx. 3 – 3 – 4 – 4 – 4 – 4 cm/1.2-1.2-1.6-1.6-1.6-1.6 in, bind off in rib first and last 8 sts. Cont working until neck band measures 6 – 6 – 8 – 8 – 8 – 8 cm/2.4-2.4-3.1-3.1-3.1-3.1 in. Bind off in rib.

Finishing: Sew on front bands, and seam allowances over cut edges. Fold neck band in double, and sew on WS. Sew underarm seams. Sew on 10 buttons. Weave in all ends on WS.



- = Charcoal
- = Off-White
- ⊠ = Beige
- ◼ = Rust

PATTERN C



- = Charcoal
- = Off-White
- ⊠ = Beige
- ◻ = Rust
- ⧻ = K2tog

Viking Alpaca Fine

Hedda cardigan

1416-3

Size S M L XL XXL

Bust: 88 - 97 - 106 - 114 - 123 cm

34.6-38.2-41.6-44.9-48.4 in

Length: 55 - 55 - 56 - 57 - 57 cm

21.7-21.7-22-22.4-22.4 in

Sleeve length: 49 - 50 - 50 - 51 - 1 cm

19.3-19.7-19.7-20.1-20.1 in

ALTERNATIVE YARNS: Viking Alpaca Fine (85% Superfine Alpaca, 15 % Highland wool), Viking Baby ull (100 % merino wool ,superwash), 50 g ball

Dark Grey, 615: 5-5-6-6-7 balls

Off-White, 602: 3-3-4-4-4 balls

Light Grey, 613: 2-2-2-3-3 balls

Beige, 607: 1-1-1-1-1 ball

Rust, 650: 1-1-1-1-1 ball

Circular needle and double pointed needles size 3 mm – US 2 or 3 – UK/Canadian 11

+ 6 pairs of clasps

Gauge: 28 sts = approx. 10 cm/4 in over St st using needles size 3 mm. **Check your gauge to ensure success.**

When working in a patt with 2 clrs, it's important to maintain the order of yarns over your finger. Always hold the darker clr in front throughout the whole project.

Using needles size 2½ mm and dark grey yarn, cast on 265-289-313-337-361 sts. Work back and forth 5 cm/2 in in K1,P1 rib. Slip first and last 12 sts on holders = 241-265-289-313-337 sts. Change to needles size 3 mm. Cont working in rnds in St st and patt A as charted, but cast on 5 new sts to the end of 1st row. Purl these new sts every rnd (= to be cut open later on, not incl. in the number of sts). Place markers at each side, 58-64-70-76-82 sts for both fronts, and 125-137-149-161-173 sts for back. Cont working until work measures approx. 35-35-35-35-35cm/13.8-13.8-13.8-13.8-13.8 in (end as arrow points out in the chart). Bind off on last rnd 16 sts at each side (8 sts both sides of the markers). Leave work aside, and knit the sleeves.

Sleeves

Using needles size 2½ mm and dark grey yarn, cast on 60-64-64-68-68 sts. Work in rnds in rib same as for body until rib measures approx. 3-4-4-5-5 cm/1.2-1.6-

1.6-2-2 in. Note! Measure from body where to beg patt for sleeves. It's important to end sleeves with same rnd as body in order to match with the yoke. Change to needles size 3 mm. Work 1 rnd in St st with dark grey yarn, and inc evenly across to be 71-75-75-79-79 sts. Cont working in rnds in St st and patt A (check from mid st where to beg patt), Place a marker beg of rnd = mid under sleeve. Inc 1 st both sides of the marker approx. every 3-3-3½ -2-2 cm/1.2-1.2-1.4-1.6-1.6 in until there is altog. 101-105-111-117-117 sts. Cont working until sleeve measures the given length, or as desired. **Note! End with same patt rnd as for body.** Bind off on last rnd 16 sts mid under sleeve (8 sts both sides of the marker). Leave work aside, and work same for the other sleeve.

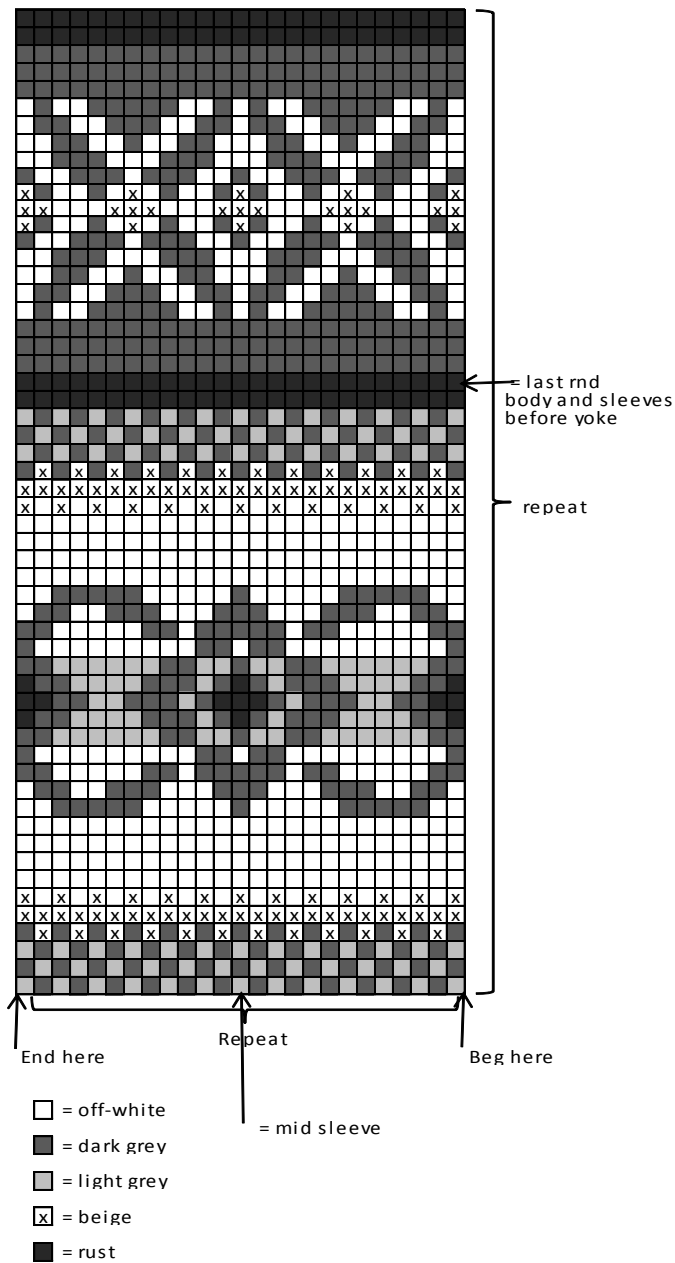
Yoke

Slip all pieces on same circular needle, with sleeves over the bound-off armhole sts = 379-411-447-483-507 sts on a rnd. **Note! 5 purl-sts are not incl.** Work in patt B as charted. Dec where arrows point out, 121-121-145-169-169 sts rem. Knit 2 rnds with dark grey yarn, and dec across 2nd rnd evenly across number of sts to be 117-117-131-141-141 sts. Slip sts on holder. **Finishing:** Dampen the garment slightly from WS. Sew 2 dense zigzag seams mid front. Cut open between the seams. Sew normal zigzag over cut edges.

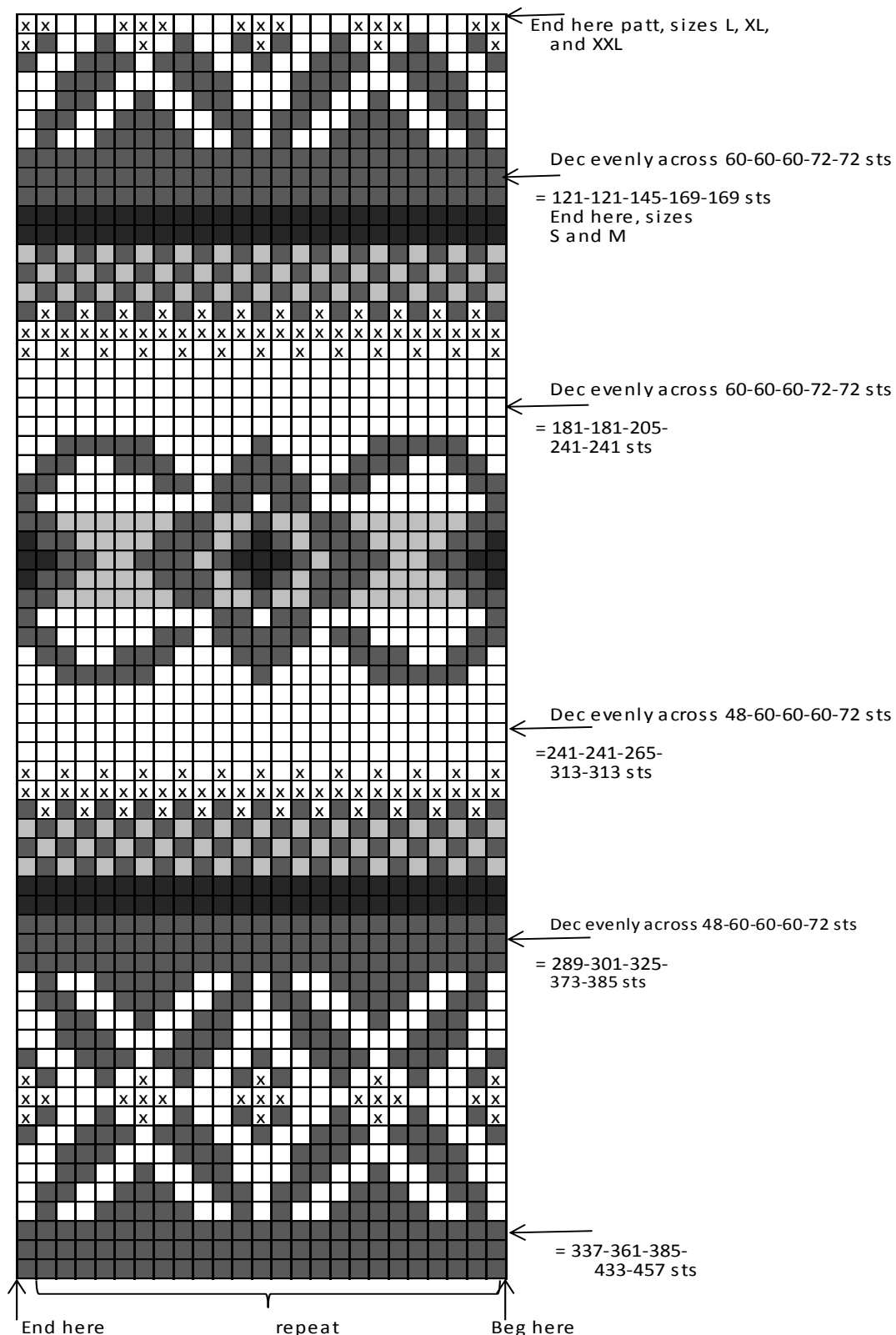
Front bands: Slip 12 sts on needles size 2½ mm. Using grey yarn, cast on 5 new sts to the edge facing the body (= seam allowance, work in St st). Cont working until front band measures up to neck edge (stretch slightly when measuring). Bind off seam allowance sts, and slip rem sts on holder. Work same for the other front band.

Neck band: Beg from right front. Slip sts from holder on needles size 2½ mm, using grey yarn knit sts from body, and slip left front band sts on needles = 141-141-155-165-165 sts on a row. Cont working back and forth 3-3-4-4-4 cm/1.2-1.2-1.6-1.6-1.6 in in K1,P1 rib. Bind off in rib first and last 12 sts. Cont working until neck band measures approx. 6-6-8-8-8 cm/2.4-2.4-3.1-3.1-3.1 in. Bind off in rib. Sew on front bands, and seam allowance over cut edges. Fold neck band in double, and sew on WS. Sew underarm seams. Sew on 6 pairs of clasps. Weave in all ends on WS.

PATTERN A



Pattern B, yoke



□ = off-white

■ = dark grey

■ = light grey

⊠ = beige

■ = rust

Viking Alpaca Fine

Fryd cardigan

1416-4

Size: XS- S- M- L- XL -XXL

Bust: 87- 91- 94- 101- 112- 119 cm

34.3-35.8-37-39.8-44.1-46.8 in

Length: 56 - 57 - 58 - 60 - 61 - 62 cm

22-22.4-22.8-23.6-24-24.4 in

Length: 47 - 48 - 49 - 50 - 51 - 51 cm

18.5-18.9-19.3-19.7-20.1-20.1 in

ALTERNATIVE YARNS: Viking Alpaca Fine

(85% Superfine Alpaca, 15 % Highland wool),

Viking Baby ull (100 % merino wool ,superwash),

50 g ball

Navy Blue, 627: 6-7-7-8-9-9 balls

White, 600 : 1-1-2-2-2-2 balls

Grayish Blue, 626: 1-1-1-1-1-1 ball

Green, 630 : 1-1-1-1-1-1 ball

Circular needle size 2 ½ and 3 mm – US 1 or 2 and 2 or 3 – UK/Canadian 13 or 12 and 11

+ 9 buttons

Gauge: 28 sts = approx. 10 cm/4 in over St st using needles size 3 mm. **Check your gauge to ensure success.**

When working in a patt with 2 clrs, it's important to maintain the order of yarns over your finger. Always hold the darker clr in front throughout the whole project.

Using needles size 2½ mm and navy blue yarn, cast on 237 – 249 – 257 – 271 – 307 – 327 sts. Work back and forth 5 – 5 – 5 – 6 – 6 – 6 cm/2-2-2-2.4-2.4-2.4 in in K1,P1 rib. Make on last row a buttonhole on right edge inside 3 sts. Buttonhole: Bind off 3 sts. Next row: Cast on 3 new sts over the bound-off sts. Slip first and last 10 sts on holders (= front band sts). Change to needles size 3 mm. Work in St st, and **same time** inc evenly across number of sts to be 235 – 247 – 255 – 271 – 307 – 327 sts (front band sts not incl). Cast on 4 new sts to the end of the row (= purl every rnd, to be cut later on). Place markers at each side, 57 – 60 – 62 – 66 – 75 – 80 sts for both fronts, and 121 – 127 – 131 – 139 – 157 – 167 sts for back. Cont working in rnds in St st until work measures approx. 33 – 33 – 33 – 34 – 34 – 35 cm/13-13-13-13.4-13.4-13.8 in. Bind off on last rnd 12 sts at each side

for armholes (6 sts both sides of the markers). Leave work aside, and knit the sleeves.

Sleeves: Using needles size 2½ mm and navy blue yarn, cast on 54 – 58 – 60 – 62 – 62 – 64 sts. Work in rnds approx. 5 – 5 – 5 – 6 – 6 – 6 cm/2-2-2-2.4-2.4-2.4 in in K1,P1 rib. Change to needles size 3 mm.

Work in St st, and inc evenly across 1st rnd number of sts to be 57 – 63 – 67 – 69 – 71 – 71 sts. Place a marker beg of rnd (= mid under sleeve). Inc 1 st both sides of the marker approx. every 2 – 2 – 1 ½ – 1 ½ – 1 ½ – 1 ½ cm/0.8-0.8-0.6-0.6-0.6-0.6 in until there is 99 – 105 – 113 – 117 – 123 – 125 sts on a rnd, and sleeve measures approx. 47 – 48 – 49 – 50 – 51 – 51 cm/18.5-18.9-19.3-19.7-20.1-20.1 in. Bind off on last rnd 12 sts mid under sleeve (6 sts both sides of the marker). Work same for the other sleeve.

Yoke: Knit all pieces on same circular needle, with sleeves over the bound-off armhole sts = 385 – 409 – 433 – 457 – 505 – 529 sts on a rnd. Work in patt A, and dec as charted. There is now 81 – 86 – 91 – 96 – 106 – 111 sts on a rnd. Leave work aside, and knit the front bands.

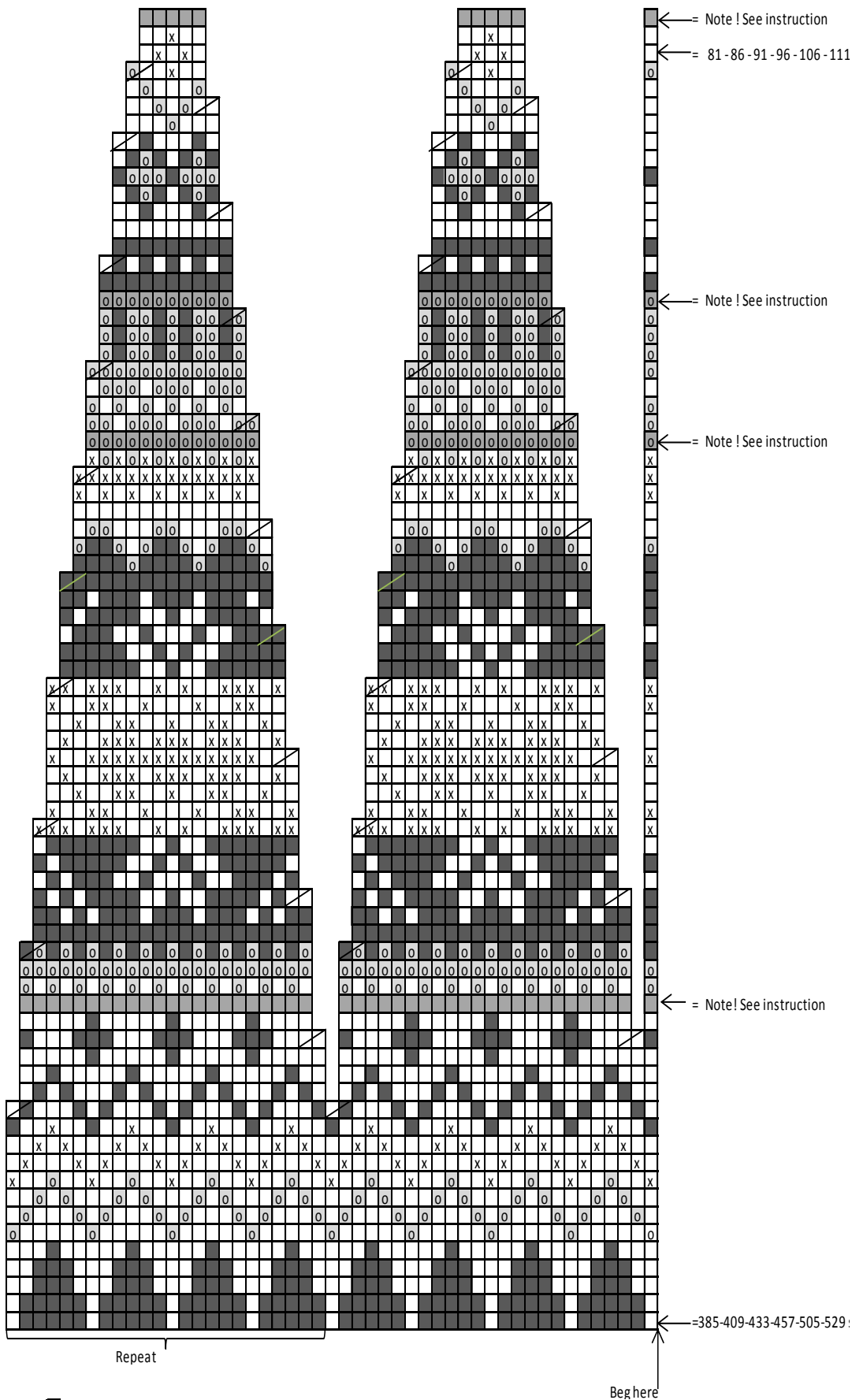
Finishing: Dampen the garment slightly from WS. Sew 2 dense zigzag seams mid front. Cut open between the seams. Sew normal zigzag over cut edges.

Front bands: Slip from holder 10 sts without buttonhole on needles size 2½ mm. Using navy blue yarn, cast on 5 sts to the edge facing the body (= seam allowance, work in St st). Cont working until front band measures up to neck edge (stretch slightly when measured). Bind off seam allowance sts, and slip rem sts on holder. Work same for the other front band, but with 9 buttonholes. First buttonhole has already been made. Make last buttonhole just before neck band, and rest evenly spaced apart.

Neck band: Beg from right front band. Slip sts from holder on needles size 2½ mm. Using navy blue yarn, knit sts from body, and slip sts from left front band on needles. There is now 101 – 106 – 111 – 116 – 126 – 131 sts on a row. Sizes S, L, and XL: Bind off 1 st mid back = 101 – 105 – 111 – 115 – 125 – 131 sts on a row. Cont working back and forth in K1,P1 rib. When neck band measures approx. 3 – 3 – 4 – 4 – 4 – 4 cm/1.2-1.2-1.6-1.6-1.6-1.6 in, bind off in rib first and last 10 sts. Cont working until neck band measures approx. 6 – 6 – 8 – 8 – 8 cm/2.4-2.4-3.1-3.1-3.1-3.1 in. Bind off in rib.

Finishing: Sew on front bands, and seam allowances. Fold neck band in double, and sew on WS. Sew underarm seams. Sew on 9 buttons. Weave in all ends on WS.

PATTERN A



□ = White

■ = Navy Blue

○ = Green

⊗ = Grayish Blue

⧻ = K2tog

■ = XS and S: Not worked
M and L: Knit 1 rnd with white
XL and XXL: Knit 2 rnds with white

○ = XS and S: Not worked
M and L: Knit 1 rnd with green
XL and XXL: Knit 2 rnds with green

Viking Alpaca Fine

Idunn cardigan

1416-5

Size: S- M- L

Bust: 89 - 106 - 123 cm

35-41.8-48.4 in

Length: 59 - 61 - 63 cm

23.2-24-24.8 in

Sleeve length: 48 - 49 - 51 cm

18.9-19.3-20.1 in

ALTERNATIVE YARNS: Viking Alpaca Fine (85% Superfine Alpaca, 15 % Highland wool), Viking Baby ull (100 % merino wool, superwash), 50 g ball

Grey, 613 : 4- 5- 6 balls

Grayish Blue, 626: 3- 4- 4 balls

Navy Blue, 627: 2- 3- 3 balls

Circular needle size 2 ½ and 3 mm – US 1 or 2 and 2 or 3 – UK/Canadian 13 or 12 and 11 + 9 buttons

Gauge: 28 sts = approx. 10 cm/4 in over St st using needles size 3 mm. **Check your gauge to ensure success.**

When working in a patt with 2 clrs, it's important to maintain the order of yarns over your finger. Always hold the darker clr in front throughout the whole project.

Using needles size 2½ and grayish blue yarn, cast on 241 – 289 – 337 sts. Work back and forth 5 – 5 – 6 cm/2-2-2.4 in in K1,P1 rib. Make on last row one buttonhole to the right edge inside 3 sts. Buttonhole: Bind off 3 sts. Next row: Cast on 3 new sts over the bound-off sts. Slip first and last 10 sts on holders (= front band sts). Change to needles size 3 mm. Work 1 rnd in St st, and inc evenly across number of sts to be 241 – 289 – 337 sts (front band sts not incl). Cast on 4 new sts to the end of the row. Work these new sts without patt (= to be cut open later on). Work in patt I as charted (Note! Basic clr varies from grayish blue to navy blue every 12th rnd). Place markers at each side,

60 – 72 – 84 sts for each front, and 121 – 145 – 169 sts for back.

After 4 patt reports, and when work measures approx. 35 – 36 – 36 cm/13.8-14.2-14.2 in, bind off 12 sts at each side for armholes (6 sts both sides of the markers). Leave work aside, and knit the sleeves.

Sleeves: Using needles size 2½ mm and grayish blue, cast on 54 – 60 – 64 sts. Work in rnds approx. 4 – 5 – 6 cm/1.6-2-2.4 in in K1,P1 rib. Change to needles size 3 mm. Work 1 rnd in St st, and inc evenly across number of sts to be 59 – 69 – 71 sts.

Place a marker to beg of rnd. Work in patt I as charted. Inc 1 st both sides of the marker approx. every 2 – 1 ½ – 1 ½ cm/0.8-0.6-0.6 in until there is 6 patt reports in height, and there is 97 – 121 – 121 sts on a rnd.

Right sleeve: Bind off on last rnd 13 sts mid under sleeve (7 sts before the marker, and 6 sts after the marker, so that the patt will match with the body).

Left sleeve: Work same as for right sleeve, but bind off under sleeve 6 sts before the marker.

Yoke: Knit all pieces on same circular needle, with sleeves over the bound-off armhole sts = 385 – 481 – 529 sts on a rnd. Work in patt II, and dec as charted. There is now 81 – 101 – 111 sts on a rnd. Leave work aside, and knit front bands.

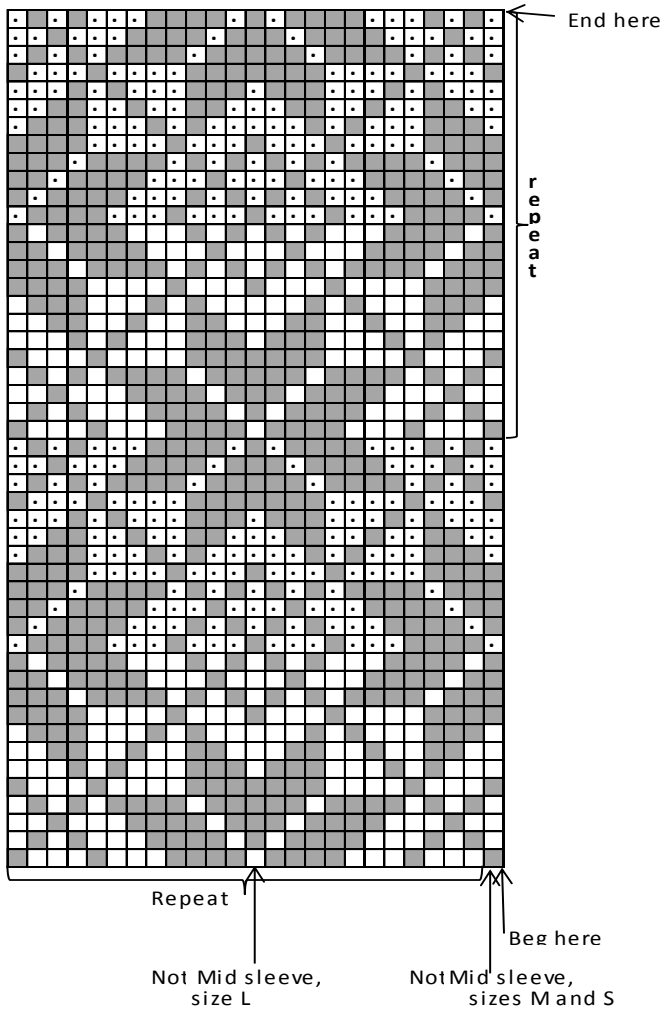
Finishing: Dampen garment slightly from WS. Sew 2 dense zigzag seams mid front. Cut open between the seams. Sew normal zigzag over cut edges.

Front bands: Slip from holder 10 sts without buttonhole on needles size 2 ½ mm. Using grayish blue yarn, cast on 5 new sts to the edge facing the body (= seam allowance, work in St st). Cont working until front band measures up to neck edge (it's important that front band is not too long). Bind off seam allowance sts, and slip rem sts on holder. Work same for the other front band, but make 9 buttonholes. First buttonhole has already been made. Make last buttonhole on last rnd before neck band, and rest evenly spaced apart.

Neck band: Beg from right front band. Slip sts from holder on needles size 2½ m, knit with grayish blue yarn sts from body, and slip left front band sts on needles. There is now 105 – 120 – 130 sts on a row. Cont working back and forth in K1,P1 rib. When neck band measures approx. 3 – 4 – 4 cm/1.2-1.6-1.6 in, bind off in rib first and last 10 sts. Cont working until neck band measures approx. 6 – 8 – 8 cm/2.4-3.1-3.1 in. Bind off in rib.

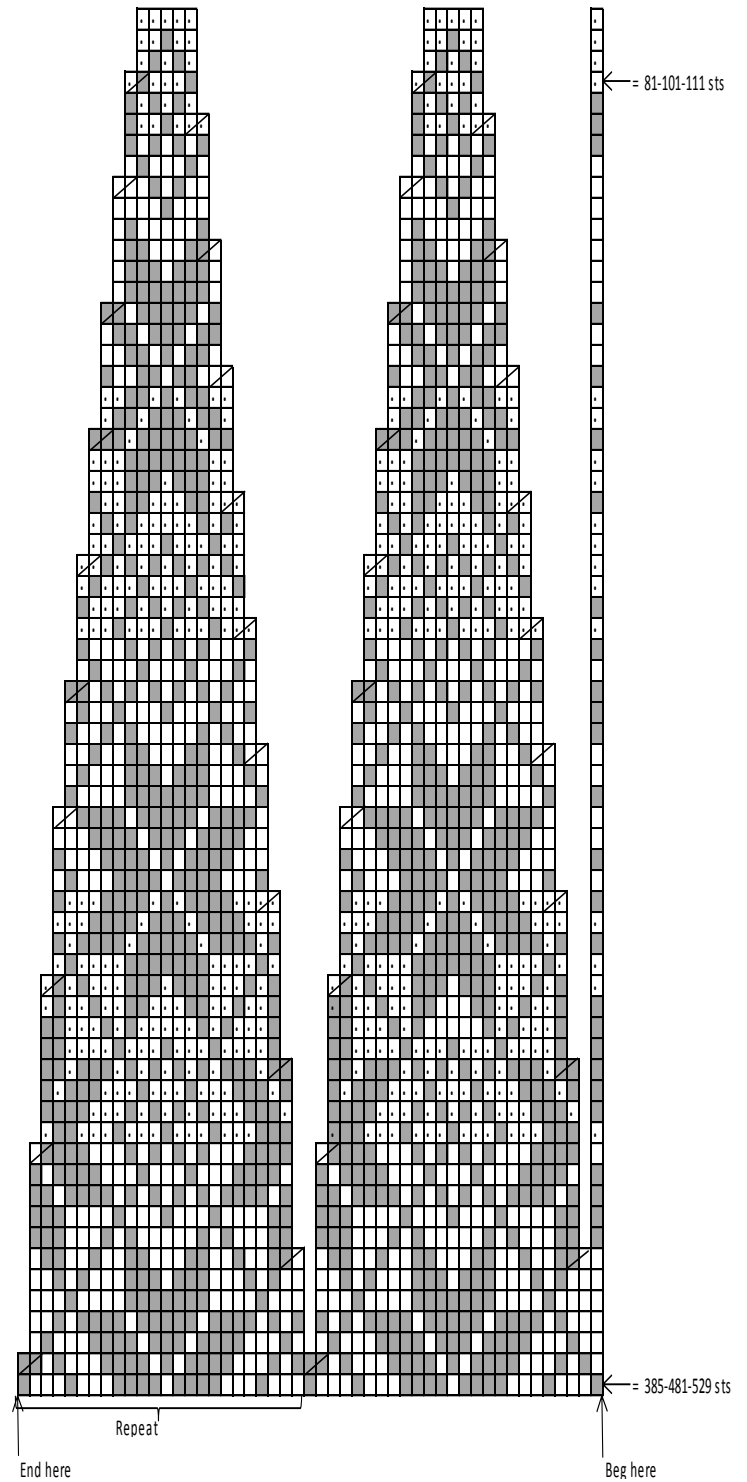
Finishing: Sew on front bands, and seam allowances. Fold neck band in double, and sew on WS. Sew underarm seams. Sew on 9 buttons. Weave in all ends on WS.

Pattern I



- = Grayish Blue
- ◻ = Navy Blue
- = Light Grev

PATTERN II



- = Gray
- = Grayish Blue
- ◻ = Navy Blue
- ▤ = K2tog

Viking Alpaca Fine

Oda cardigan

1416-6

Size: S - M - L - XL - XXL

Bust: 95 - 105 - 114 - 123 - 132 cm

37.4-41.4-44.9-48.4-51.9 in

Length: 64 - 65 - 66 - 67 - 68 cm

25.2-25.6-26-26.4-26.8 in

Sleeve length: 48 - 49 - 50 - 50 - 51 cm

18.9-19.3-19.7-19.7-20.1 in

ALTERNATIVE YARNS: Viking Alpaca Fine

(85% Superfine Alpaca, 15 % Highland wool),

Viking Baby ull (100 % merino wool ,superwash), 50 g ball

Grayish Blue, 626: 4 - 5 - 5 - 6 - 6 balls

Green, 630: 4 - 4 - 5 - 5 - 6 balls

Violet, 669: 2 - 2 - 2 - 3 - 3 balls

Light Grey, 613: 1 - 1 - 2 - 2 - 2 balls

Circular needle and double pointed needles size 2½ and 3 mm – US 1 or 2 and 2 or 3 – UK/Canadian 13 or 12 and 11

+ 9 buttons

Gauge: 28 sts = approx. 10 cm/4 in over St st using needles size 3 mm. **Check your gauge to ensure success.**

When working in a patt with 2 clrs, it's important to maintain order of yarns over your finger. Always hold the darker clr in front throughout the whole project.

Using needles size 2½ mm and grayish blue yarn, cast on 267 – 291 – 317 – 341 – 367 sts. Work back and forth approx. 3 – 3 – 3 – 4 – 4 cm/1.2-1.2-1.2-1.6-1.6 in in 1,P1 rib. Slip first and last 8 sts on holder (= front and sts). Change to needles size 3 mm. Work 1 row in St st, and inc evenly across number of sts to be 261 – 287 – 313 – 339 – 365 sts (front band sts not incl). Cast on 4 new sts to the end of the row (= work without patt, to be cut open later on). Place markers at each side, 133 – 147 – 159 – 173 – 185 sts for back, and 64 – 70 – 77 – 83 – 90 sts for both fronts (4 mid front sts not incl). Cont working in rnds in patt A as charted until work measures approx. 64 – 65 – 66 – 67 – 68 cm/25.2-25.6-26-26.4-26.8 in. Bind off.

Sleeves: Using needles size 2½ mm and grayish blue yarn, cast on 56 – 56 – 58 – 58 – 60 sts. Work in rnds approx. 3 – 3 – 4 – 4 – 4 cm/1.2-1.2-1.6-1.6-1.6 in in K1,P1 rib. Change to needles size 3 mm. Work 1 rnd in St st, and inc evenly across number of sts to be 63 – 65 – 67 – 67 – 69 sts.

Place a marker beg of rnd (= mid under sleeve). Work in patt A as charted. Inc **same time** 1 st both sides of

the marker approx. every 1 ½ – 1 – 1 – 1 – 1 cm/0.6-0.4-0.4-0.4-0.4 in until there is 123 – 129 – 133 – 135 – 139 sts, and sleeve measures approx. 48 – 49 – 50 – 50 – 51 cm/18.9-19.3-19.7-19.7-20.1 in. Turn inside out, and work 6 rnds in St st for seam allowance.

Finishing: Dampen the pieces slightly from WS. Sew 2 dense zigzag seams around armholes and mid front. Cut open between the seams. Sew normal zigzag over cut edges. Join shoulder seams, 43 – 49 – 54 – 60 – 65 sts for each shoulder.

Front bands: Slip left front band's 8 sts on needles size 2½ mm. Cast on 5 new sts to the edge facing the body (= seam allowance, work in St st). Cont working in K1,P1 rib, until front and measures approx. 6 – 6 – 7 – 7 – 7 cm/2.4-2.4-2.8-2.8-2.8 in less than total length (stretch slightly when measured). Bind off seam allowance sts, and leave rem 8 sts on holder.

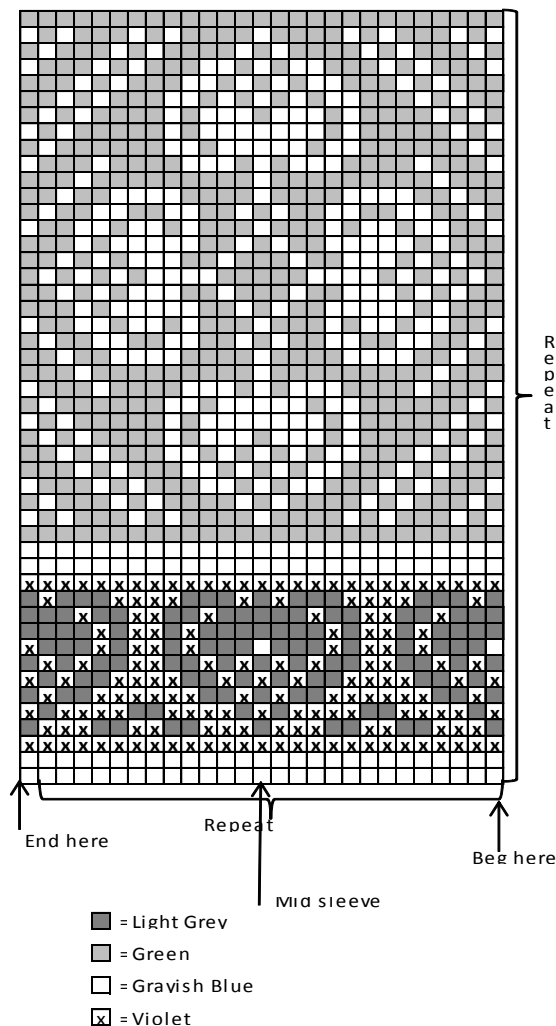
Work same for right front and, but make 9 buttonholes 3 sts inside the edge. Buttonhole: Bind off 3 sts. Next row: Cast on 3 new sts over the bound-off sts. Make 1st buttonhole after rib, last one on last row before neck band, and rest evenly spaced apart.

Neck band: Sew a curving marker thread for neck edge, approx. 6 – 6 – 7 – 7 – 7 cm/2.4-2.4-2.8-2.8-2.8 in below upper edge (= mid front). Using needles size 2½ mm and grayish blue yarn, pick or knit up as foll: Beg from RS right front band. Slip sts from holder over needles, pick up approx. 29 – 30 – 32 – 34 – 36 sts along the marked line, 47 – 49 – 51 – 53 – 55 sts from back, 29 – 30 – 32 – 34 – 36 sts along marked line on left front, and slip left front band sts on needles. There is now 121 – 125 – 131 – 137 – 143 sts on a row. Work back and forth in K1,P1 rib. When neck band measures approx. 2½ cm/1 in, bind off in rib first and last 8 sts. Cont working until neck band measures approx. 5 cm/2 in. Bind off in rib.

Sew 2 dense zigzag seams along the neck edge inside neck band. Cut off all extras. Sew normal zigzag over cut edges.

Finishing: Sew on front bands, and seam allowances. Fold neck band in double over cut edge, and sew on WS. Sew on sleeves, and seam allowances. Sew on buttons. Weave in all ends on WS.

Pattern A



Viking Alpaca Fine

Vår sweater

1416-7

Size: XS- S- M- L- XL -XXL

Bust: 91- 95- 101- 105- 109- 116 cm

35.8-37.4-39.8-41.4-45.7 in

Length: 63 - 64 - 64 - 65 - 66 - 66 cm

24.8-25.2-25.2-25.6-26-26 in

Sleeve length: 48 - 49 - 51 - 51 - 52 - 52 cm

18.9-19.3-20.1-20.1-20.5-20.5 in

ALTERNATIVE YARNS: Viking Alpaca Fine
(85% Superfine Alpaca, 15 % Highland wool),
Viking Baby ull (100 % merino wool ,superwash),
50 g ball

Light Grey, 613: 6-7-7-7-8-8 balls

Pink, 665: 1-1-1-1-2-2 balls

Violet, 669: 1-1-1-1-2-2 balls

Charcoal, 603: 1-1-1-1-2-2 balls

Circular needle size 2 ½ and 3 mm – US 1 or 2 and 2
or 3 – UK/Canadian 13 or 12 and 11

Gauge: 28 sts = approx. 10 cm/4 in over St st using
needles size 3 mm. **Check your gauge to ensure
success.**

When working in a patt with 2 clrs, it's important to
maintain the order of yarns over your finger. Always
hold the darker clr in front throughout the whole
project.

Using needles size 2½ mm and light grey yarn, cast
on 254 – 266 – 282 – 294 – 306 – 326 sts. Work in
rnds approx. 6 cm/2.4 in in K1,P1 rib. Change to
needles size 3 mm. Work in St st. Place markers at
each side, 127 – 133 – 141 – 147 – 153 – 163 sts for
both front and back.

When work measures approx. 40 – 40 – 39 – 39 – 39
– 39 cm/15.7-15.7-15.4-15.4-15.4-15.4 in, bind off 12
sts at each side for armholes (6 sts both sides of the
markers). Leave work aside, and knit the sleeves.

Sleeves: Using needles size 2½ mm and light grey,
cast on 54 – 58 – 60 – 62 – 62 – 64 sts. Work in rnds
approx. 5 – 5 – 6 – 6 – 6 – 6 cm/2-2-2.4-2.4-2.4-2.4 in
in K1,P1 rib. Change to needles size 3 mm. Work in
St st, and inc evenly across 1st rnd number of sts to be
59 – 63 – 67 – 69 – 71 – 71 sts. Place a marker beg of
rnd (= mid under sleeve), and inc 1 st both sides of
the marker approx. every 2 – 2 – 2 – 1 ½ – 1 ½ – 1 ½
cm/0.8-0.8-0.8-0.6-0.6-0.6 in until there is 101 – 107
– 111 – 117 – 123 – 125 sts on a rnd, and sleeve
measures approx. 48 – 49 – 51 – 51 – 52 – 52 cm/ in.
Bind off on last rnd 12 sts mid under sleeve (6 sts

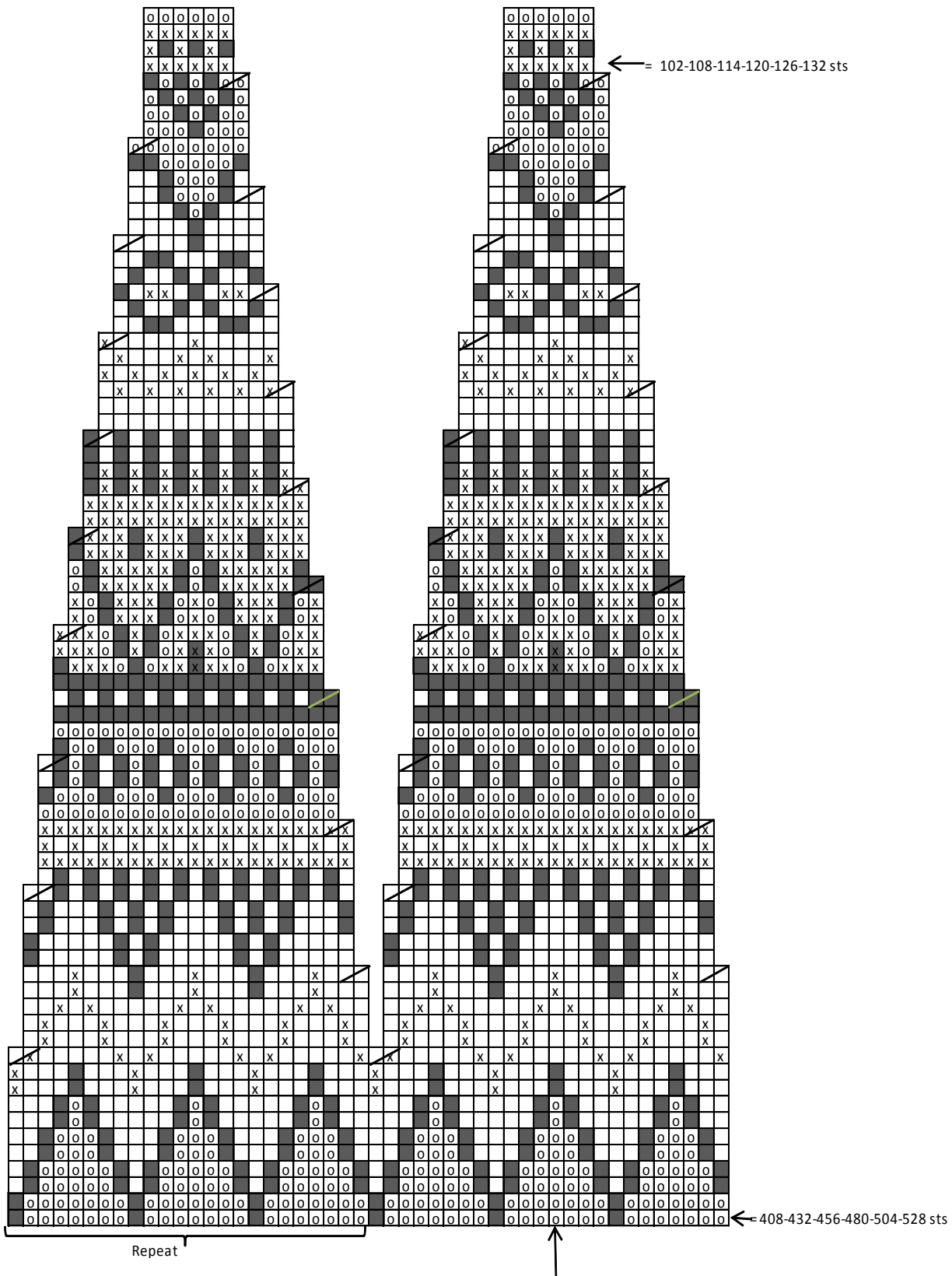
both sides of the marker). Work same for the other sleeve.

Yoke: Knit all pieces over same circular needle, with sleeves over the bound-off sts = 408 – 432 – 456 – 480 – 504 – 528 sts on a rnd. Work 1-1-3-3-5 rnds with light blue yarn. Work after that in patt I. Beg from back, left shoulder, and check from mid back where to beg patt. There is now 102 – 108 – 114 – 120 – 126 – 132 sts on a rnd.

Neck band: Change to needles size 2½ mm. Cont working with light grey yarn in rnds in K1,P1 rib until neck band measures approx. 12 cm/ in. Bind off rather loosely in rib. Fold neck band in double, and sew on WS.

Finishing: Sew underarm seams. Weave in all ends.

PATTERN I



- O = Light Grey
- = Charcoal
- = Pink
- X = Violet
- / = K2tog

Viking Alpaca Fine

Frigg cardigan

1416-8

Size: XS S M L XL XXL XXXL

Bust: 86 - 90 - 97 - 103 - 110 - 116 128 cm

33.9-35.4-38.2-40.6-43.3-45.7-50.3 in

Length: 62 - 63 - 64- 65 - 66 - 67 68 cm

24.4-24.8-25.2-26-26.4-26.8 in

Sleeve length: 48 - 49 - 50 - 51 - 51 - 52 52 cm

18.9-19.3-19.7-20.1-20.1-20.5-20.5 in

ALTERNATIVE YARNS: Viking Alpaca Fine (85% Superfine Alpaca, 15 % Highland wool), Viking Baby ull (100 % merino wool ,superwash), 50 g ball

White, 600: 8-8-8-9-9-10-10 balls

Charcoal, 603: 2-2-2-3-3 -3 -4 balls

Circular needle and double pointed needles size 2 ½ and 3 mm – US 1 or 2 and 2 or 3 – UK/Canadian 13 or 12 and 11
+ 8 buttons

Gauge: 28 sts = approx. 10 cm/4 in over St st using needles size 3 mm. **Check your gauge to ensure success.**

Mini Cable

1st row (RS) – K1 (= selvage st), K2, P2 until 1 st rem, K1 (= selvage st).

2nd row (WS) – K1 (= selvage st), P2, K2 until 1 st rem, K1 (= selvage st).

3rd row (RS) – Work in rib, but make a cable twist over knit-sts: Knit 2nd st from back of the work and hold it on the needle, knit 1st st from front of the work. Slip both sts on RH needle = 1 mini cable.

4th row (WS) - K1 (= selvage st), P2, K2 until 1 st rem, K1 (= selvage st).

Rep these 4 rows.

When working in a patt with 2 clrs, it's important to maintain the order of yarns over your finger. Always hold the darker clr in front throughout the whole project.

Using needles size 2½ mm and charcoal clr yarn, cast on 252-264-280-304-320-336-372 sts. Work back and forth 2 rows in Garter st. Change to white yarn. Beg from RS, and work in mini cable rib. When rib measures 2 cm/0.8 in, make a buttonhole inside 5 sts from the edge. Buttonhole: Bind off 4 sts. Next row: Cast on 4 new sts over the bound-off sts.

When work measures 6 cm/2.4 in, slip first and last 13 sts on holders for front bands = 226-238-254-278-294-310-346 sts rem. Change to needles size 3 mm.

Work 1 row in St st, and inc evenly across number of sts to be 229-241-259-277-295-313-349 sts. Place markers at each side, 55-58-62-67-71-76-85 sts for each front, and 119-125-135-143-153-161-179 sts for back. Cont working in rnds in patt A, and cast on 5 sts to the end of 1st rnd = to be cut open (purl these sts every rnd with basic clr, not incl in the number of sts). When patt A is ready, cont working in patt B until work measures 42 cm/16.5 in (or as desired). End with 3 white rnds, bind off 12-12-14-14-16-16-16 sts at each side for armholes = 6-6-7-7-8-8-8 sts both sides of the markers. Leave work aside, and knit the sleeves.

Sleeves

Using needles size 2½ mm and charcoal yarn, cast on 60-60-64-64-68-68-72 sts. Work 2 rnds in Garter st. Change to white yarn. Work mini cable rib same as for body (Note! When working mini cable patt in rnds, 2nd and 4th rnd are same as 1st rnd, and there aren't any selvage sts). When rib measures 6 cm/2.4 in, change to needles size 3 mm. Work 1 rnd in St st, and inc evenly across number of sts to be 75-79-81-83-85-89-93 sts. Place a marker mid under sleeve = beg of rnd. Work in patt A, and after that in patt B. Inc same time 1 st both sides of the marker approx. every 3-2 ½-2 ½-2 ½-2-2-2 cm/1.2-1-1-1-0.8-0.8-0.8 in, until there is 103-109-115-119-125-129-135 sts on a rnd. When work measures 48-49-50-51-51-52-52 cm/18.9-19.3-19.7-20.1-20.1-20.5-20.5 in, or desired length (end with 3 rnds with white yarn), bind off 12-12-14-14-16-16-16 sts mid under sleeve = 6-6-7-7-8-8-8 sts both sides of the markers.

Leave work aside, and work same for the other sleeve.

Yoke

Slip all pieces on same circular needle size 3 mm, with sleeves over the bound-off armhole sts = 387-411-433-459-481-507-555 sts. Knit 1 rnd with white yarn, and adjust number of sts to be 385-409-433-457-481-505-553 sts. Cont working in patt C, and dec as charted. There is now 113-120-127-134-141-148-162 sts on a rnd. Work in patt D, and dec evenly across first rnd number of sts to be 109-115-115-121-121-127-133 sts on a rnd. Bind off 5 cast-on sts mid front. Cont working back and forth with white yarn. Purl 1 row = folding edge + 12 rows in St st. Bind off.

Finishing

Dampen the garment slightly from WS. Sew 2 dense zigzag seams mid front. Cut open between seams. Sew normal zigzag over cut edges.

Front bands:

Slip left front band sts on needles size 2½ mm. Cont working in rib same as before, and cast on 6 new sts

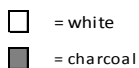
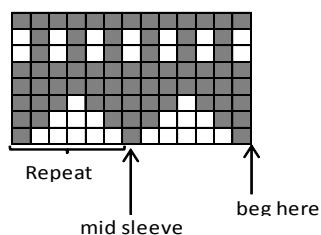
to the edge facing the body (= seam allowance, work in St st). When front band measures up to folding edge (stretch slightly when measured), bind off. Work same for right front band, but with 8 buttonholes. First buttonhole is already made, make last one on last rnd of patt D, and rest evenly spaced apart.

Finishing

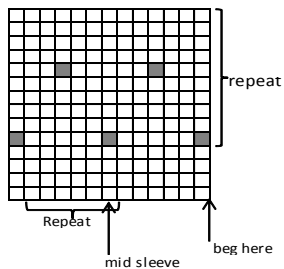
Fold neck band in double, and sew on WS. Sew underarm seams. Sew on front bands, and seam allowances over cut edges. Sew on buttons.

Weave in all ends on WS.

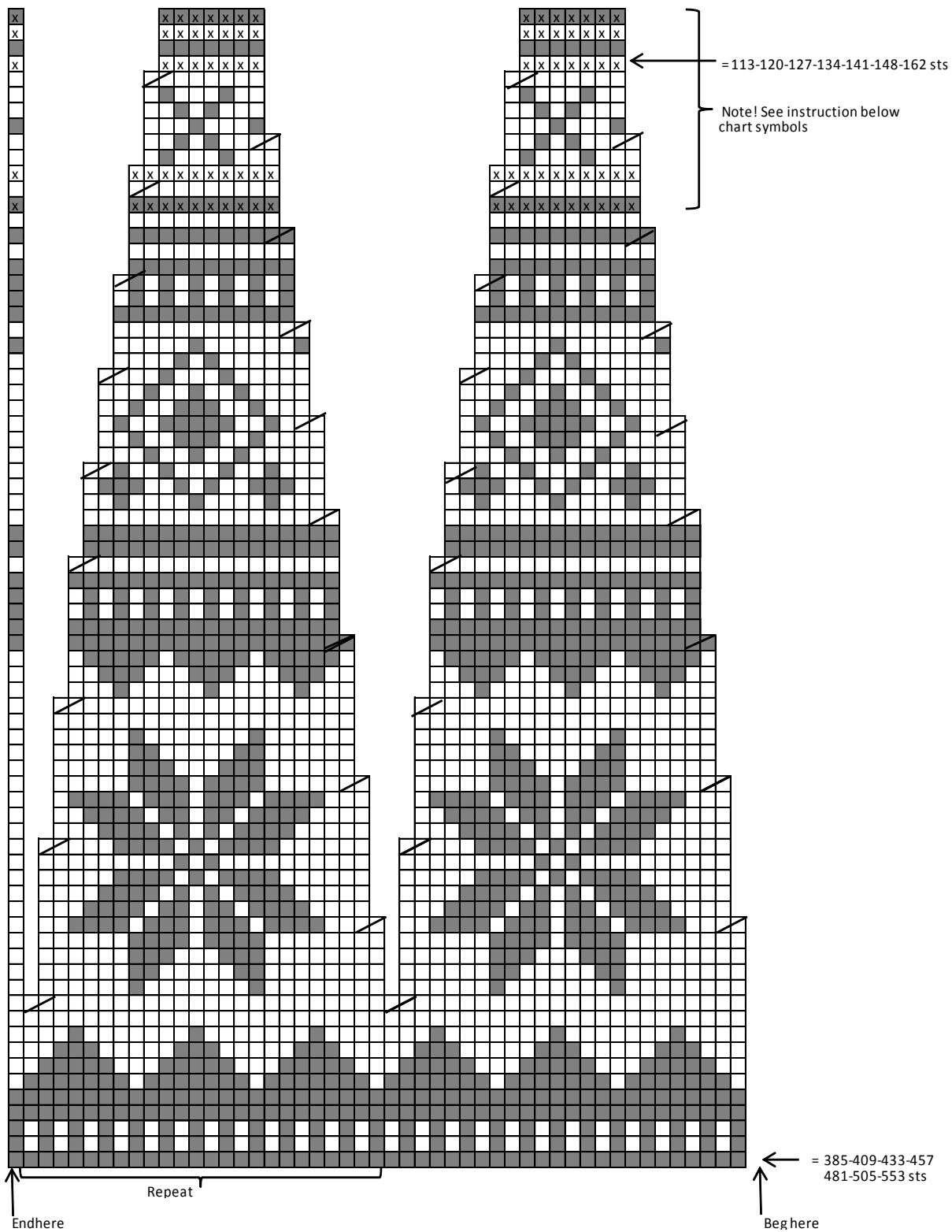
PATTERN A



PATTERN B



PATTERN C



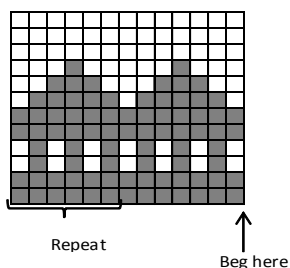
□ = White

▤ = K2tog

■ = charcoal

⌈ and ⌋ = not worked for sizes XS and S
work for sizes M, L and XL
work 2 times for sizes XXL and XXXL

PATTERN D



Viking Alpaca Fine

Frøya cardigan

1416-9

Size: XS-S-M-L-XL-XXL-XXXL

Bust: 86 -90 -97 -103 -110 -116 -128 cm
33.9-35.4-38.2-40.6-43.3-45.7-50.3 in

Length: 80 -80 -81 -81 -82 -82 -82 cm
31.5-31.5-31.9-31.9-32.3-32.3-32.3 in

Sleeve length: 48 -49 -50 -51 -51-52 -52 cm
18.9-19.3-19.7-20.1-20.1-20.5-20.5 in

ALTERNATIVE YARN: Viking Alpaca Fine
(85% Superfine Alpaca, 15 % Highland wool),
Viking Baby ull (100 % merino wool superwash),
50 g ball

Charcoal, 603: 10-10-11-11-11-12-12 balls
White, 600: 2 -2 -2 -3 -3 -3 -3 balls

Circular needle and double pointed needles size 2 ½
and 3 mm – US 1 or 2 and 2 or 3 – UK/Canadian 13
or 12 and 11
+ 10 buttons

Gauge: 28 sts = approx. 10 cm/4 in over St st using
needles size 3 mm. **Check your gauge to ensure
success.**

When knitting in a patt with 2 clrs, it's important to
maintain the order of yarns over your finger. Always
hold the darker clr in front throughout the whole
project.

Using needles size 3 mm and charcoal clr yarn, cast
on 246-258-282-294-318-330-366 sts. Work in K1,P1
rib over first and last 12 sts (= front bands), and
K6,P6 rib over rem sts. Cont working back and forth
as established. When rib measures 2 cm/0.8 in, make
a buttonhole inside 4 sts from the edge. Buttonhole:
Bind off sts. Next row: Cast on 4 new sts over the
bound-off sts.

When work measures 7 cm/2.8 in, slip first and last 12
sts on holders. Work 1 row in St st, and inc evenly
across number of sts to be 229-241-259-277-295-313-
349 sts. Place markers at each side, 55-58-62-67-71-

76-85 sts for both fronts, and 119-125-135-143-153-
161-179 sts for back. Cont working in rnds in St st,
and cast on 5 new sts to the end of 1st rnd = sts to be
cut open later on (purl these sts with basic clr, not incl
in the number of sts).

When work measures 20 cm/7.9 in, slip pocket sts on
holders:

Work 6-7-8-10-14-16-20 sts, using different clr maker
yarn, knit next 42 sts (same for all sizes), work with
charcoal until 48-49-50-52-56-58-62 sts rem, using
different clr marker yarn, knit next 42 sts, and work
with charcoal yarn over rem sts. Cont working same
as before until work measures 60-60-59-59-58-58-57
cm/23.6-23.6-23.2-23.2-22.8-22.8-22.4 in, (or desired
length before armholes). Bind off 12-12-14-14-16-16-
16 sts at each side for armholes = 6-6-7-7-8-8-8 sts
both sides of the markers. Leave work aside, and knit
the sleeves.

Sleeves

Using needles size 2½ mm and white yarn, cast on 60-
60-60-60-72-72 sts. Work 2 rnds in Garter st.
Change to charcoal yarn, and cont working in K6,P6
rib. When rib measures 6 cm/2.4 in, change to needles
size 3 mm. Work 1 rnd in St st, and inc evenly across
number of sts to be 75-79-81-83-85-89-93 sts. Place a
marker mid under sleeve = beg of rnd. Work in patt
A, and cont after that with charcoal clr yarn. Inc **same
time** 1 st both sides of the marker approx. every 3-2
½-2 ½-2 ½-2-2-2 cm/1.2-1-1-1-0.8-0.8-0.8 in until
there is 103-109-115-119-125-129-135 sts on a rnd.
When sleeve measures 48-49-50-51-51-52-52
cm/18.9-19.3-19.7-20.1-20.1-20.5-20.5 in, or desired
length, bind off 12-12-14-14-16-16-16 sts mid under
sleeve = 6-6-7-7-8-8-8 sts both sides of the marker.
Leave work aside, and knit same for the other sleeve.

Yoke

Slip all pieces on same circular needle size 3 mm,
with sleeves over the bound-off sts = 387-411-433-
459-481-507-555 sts. Knit 1 rnd with charcoal clr
yarn, and adjust number of sts to be 385-409-433-
457-481-505-553 sts. Work in patt B, and dec as
charted. There is now 113-120-127-134-141-148-162
sts on a rnd. Bind off 5 mid front sts.

Finishing

Dampen the garment slightly from WS. Sew 2 dense
zigzag seams mid front. Cut open between seams.
Sew normal zigzag over cut edges.

Front bands

Slip left front band sts on needles size 2½ mm. Cont
working in rib over front band sts, and cast on 6 new
sts to the edge facing the body = seam allowance,
work in St st. When front band measures same as
body (stretch slightly when measured), bind off front
band sts, and slip rem sts on holder.

Right front band: Work same as for front band.
Make 10 buttonholes. First buttonhole is already made, make last one on last row before neck band, and rest evenly spaced apart.

Neck band

Slip front band sts and body sts on same circular needle = 137-144-151-158-165-172-186 sts. Work 1 row in St st, and inc/dec evenly across number of sts to be 126-126-126-138-138-138 sts. Cont working back and forth in K1,P1 rib over front band sts, and K6,P6 rib over rem sts. When neck band measures approx. 5 cm/2 in, bind off 12 front band sts at each edge. Cont working 5 cm/2 in in rib. Bind off rather loosely in rib.

Finishing

Fold neck band in double, and sew on WS. Sew underarm seams. Sew on front bands, and seam allowance over the cut edges.

Pockets

Using needles size 2½ mm, pick up sts above and marker yarn for pocket (Note: Turn the work upside down when picking up the sts from the upper edge). Unravel marker thread. Cont working back and forth with upper edge sts in St st with charcoal clr yarn. When pocket measures approx. 11 cm/4.3 in, bind off.

Pocket edges

Cont working back and forth in K6,P6 rib. When edge measures approx. 4 cm/1.6 in, bind off rather loosely in rib.

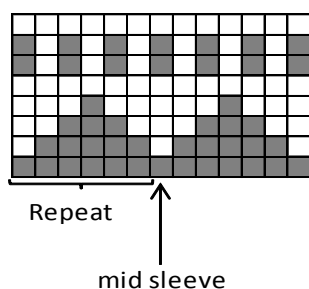
Work same for the other pocket.

Sew pocket on WS with small sts which don't show on RS. Sew sides of the pocket edges to the body.

Sew on buttons.

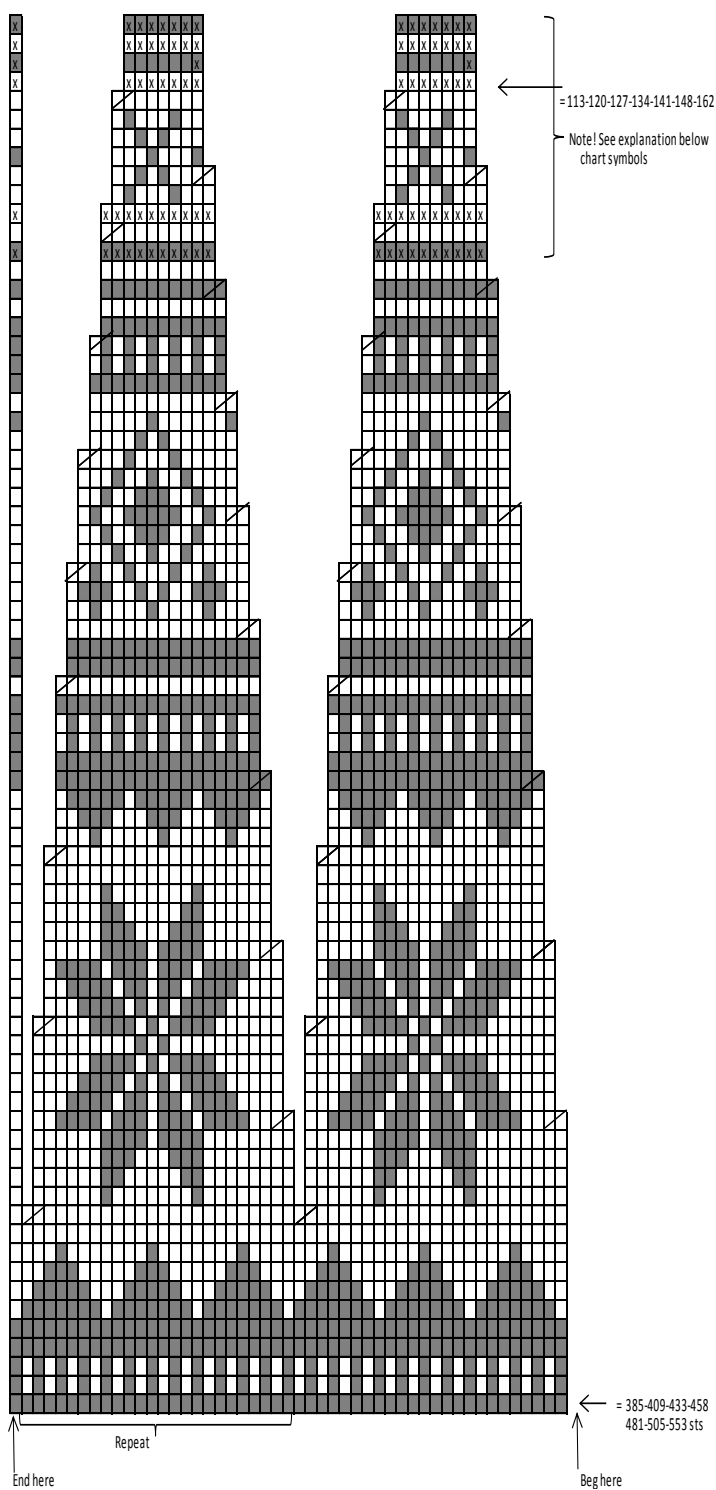
Weave in all ends on WS.

PATTERN A



- ☐ = white
- ☒ = charcoal

PATTERN B



- = grey
- = K2tog
- = white
- = not worked, sizes XS-S
work for sizes M-L and XL
work 2 times sizes XXL and XXXL

Viking Alpaca Fine

Siv sweater

1416-10

Size: S M L XL XXL

Bust: 85 - 94 - 103 - 111 - 120 cm

33.5-37-40.6-43.7-47.2 in

Length: 60 - 60 - 61 - 62 - 62

cm

23.6-23.6-24-24.4-24.4 in

Sleeve length: 50 - 50 - 51 - 51 -

52 cm

19.7-19.7-20.1-20.1-20.5 in

ALTERNATIVE YARNS: Viking Alpaca Fine

(85% Superfine Alpaca, 15 % Highland wool),

Viking Baby ull (100 % merino wool ,superwash),

50 g ball

Dark Grey, 615: 6-7-8-9-10 balls

Light Grey, 613: 2-2-2-3-3 balls

White, 600: 1-1-1-1-1 ball

Charcoal, 603: 1-1-1-1-1 ball

Circular needle and double pointed needles size 2 ½ and 3 mm – US 1 or 2 and 2 or 3 – UK/Canadian 13 or 12 and 11

Gauge: 28 sts = approx. 10 cm/4 in over St st using needles size 3 mm. **Check your gauge to ensure success.**

When working in a patt with 2 clr, it's important to maintain the order of yarns over your finger. Always hold the darker clr in front throughout the whole project.

Using needles size 2½ mm and dark grey yarn, cast on 240-264-288-312-336 sts. Work in rnds 5 cm/2 in in K1,P1 rib. Change to needles size 3 mm. Work in rnds in St st. Place markers at each side, 121-133-145-157-169 sts for front, and 119-131-143-155-167 sts for back. When work measures approx. 40-39-39-39-39 cm/15.7-15.4-15.4-15.4-15.4 in, bind off 16 sts at each side (8 sts both sides of the markers). Leave work aside, and knit the sleeves.

Sleeves

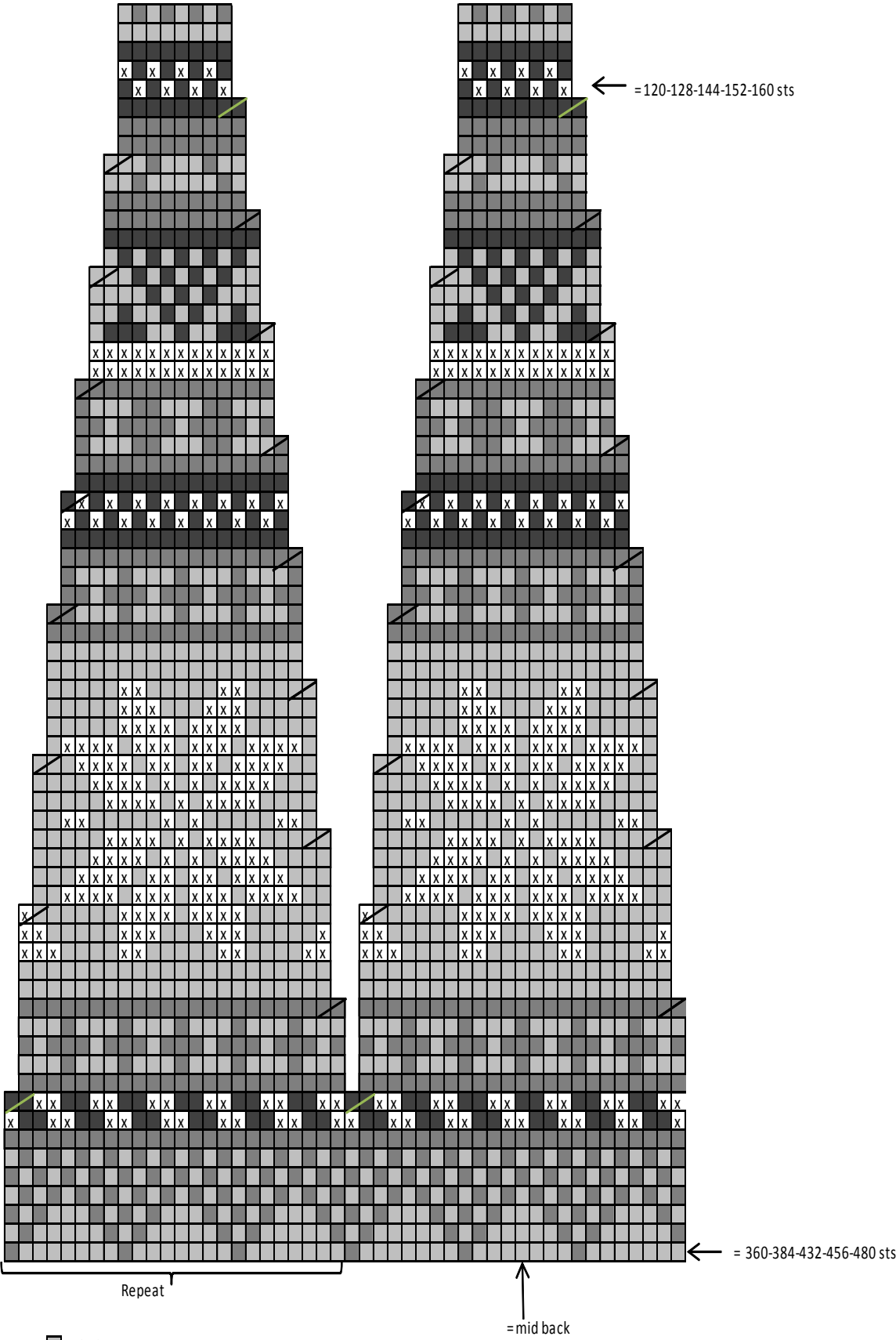
Using needles size 2½ mm and dark grey yarn, cast on 65-67-67-69-71 sts. Work in rib same as for body. Cont working in rnds in St st. Place a marker beg of rnd = mid under sleeve. Inc 1 st both sides of the marker approx. every 2 ½ - 2-2- 1 ½ -2 cm/1-0.8-0.8-0.6-0.8 in until there is altog. 101-105-111-117-117 sts on a rnd When work measures the given length, or as desired, bind off 16 sts mid under sleeve (8 sts both sides of the marker). Leave work aside, and knit same for the other sleeve.

Yoke

Slip all pieces on same circular needle, with sleeves over the bound-off armhole sts = 378-410-446-482-506 sts on a rnd. Beg from back, left shoulder. Check from mid st where to beg patt. Work 2 rnds in St st, and dec evenly across 2nd rnd number of sts to be 360-384-432-456-480 sts. Cont working in rnds in patt, and dec as charted until 120-128-144-152-160 sts rem. Knit 1 rnd, and dec evenly across number of sts to be 120-124-140-140-144 sts. Change to a short circular needle size 2 ½ mm. Cont working in rib with light grey yarn until neck band measures approx. 3 ½ cm/1.4 in. Purl 1 rnd over all sts (= folding edge) + 3 ½ cm/1.4 in in rib. Bind off rather loosely. Fold neck band in double, and sew on WS.

Sew underarm seams. Weave in all ends on WS.

YOKE PATTERN



Viking Alpaca Fine

Olea cardigan

1416-11

Size: S M L XL XXL

Bust: 89 - 97 - 106 - 115 - 123 cm

35-38.2-41.8-45.3-48.4 in

Length: 56 - 56 - 57 - 58 - 58 cm

22-22-22.4-22.8-22.8 in

Sleeve length: 50 - 50 - 51 - 51 - 52 cm

19.7-19.7-20.1-20.1-20.5 in

ALTERNATIVE YARNS: Viking Alpaca Fine (85% Superfine Alpaca, 15 % Highland wool), Viking Baby ull (100 % merino wool ,superwash), 50 g ball

Dark Grey, 615: 7-8-8-9-9 balls

Light Grey, 613: 1-1-1-1-1 ball

Charcoal, 603: 1-1-1-1-1 ball

Off-White, 602: 1-1-1-1-1 ball

Circular needle and double pointed needles size 2 ½ and 3 mm – US 1 or 2 and 2 or 3 – UK/Canadian 13 or 12 and 11
+ 8 buttons

Gauge: 28 sts = approx. 10 cm/4 in over St st using needles size 3 mm. **Check your gauge to ensure success.**

When working in a patt with 2 clrs, it's important to maintain the order of yarns over your finger. Always hold the darker clr in front throughout the whole project.

Using needles size 2½ mm and dark grey yarn, cast on 265-289-313-337-361 sts. Work back and forth 5 cm/2 in in K1,P1 rib. Slip first and last 12 sts on holder = 241-265-289-313-337 sts. Change to needles size 3 mm. Cont working in rnds in St st, and cast on 5 new sts to the end of the row. Purl these new sts with basic clr = to be cut open later on, not incl in the number of sts. Place markers at each side, 125-137-149-161-173 sts for back, and 58-64-70-76-82 sts for each front. When work measures approx. 36-35-35-35-35 cm/14.2-13.8-13.8-13.8-13.8 in, bind off 16 sts at each side (8 sts both sides of the markers). Leave work aside, and knit the sleeves.

Sleeves

Using needles size 2½ mm and dark grey yarn, cast on 64-66-66-68-70 sts. Work in rnds in rib same as for body. Knit 1 rnd, and change to needles size 3 mm.

Inc same time 1 st. Cont working in rnds in St st. Place a marker beg of rnd = mid under sleeve. Inc 1 st both sides of the marker approx. every 2 ½-2-2-1 ½-2 cm/1-0.8-0.8-0.6-0.8 in until there is altog. 101-105-111-117-117 sts on a rnd. When sleeve measures the given length, or as desired, bind off 16 sts mid under sleeve (8 sts both sides of the marker). Leave work aside, and knit same for the other sleeve.

Yoke

Slip all pieces on same circular needle, with sleeves over the bound-off armhole sts = 379-411-447-483-507 sts on the rnd. Work 2 rnds in St st over all sts, and dec evenly across 2nd rnd number of sts to be 361-385-433-457-481 sts. Cont working in patt, and dec as charted until 121-129-145-153-161 sts rem. Knit 1 rnd, and dec evenly across number of sts to be 111-123-131-131-133 sts. Slip sts on holder.

Finishing:

Dampen the work slightly from WS. Sew 2 dense zigzag seams mid front. Cut open between seams. Sew normal zigzag over cut edges.

Left front band: Slip 12 front band sts on needles size 2½ mm. Work back and forth in rib, and cast 5 new sts with dark grey yarn to the edge facing the body. Work in St st over the new sts = seam allowance. Cont working until front band measures up to neck edge (stretch slightly when measured). Slip rem sts on holder.

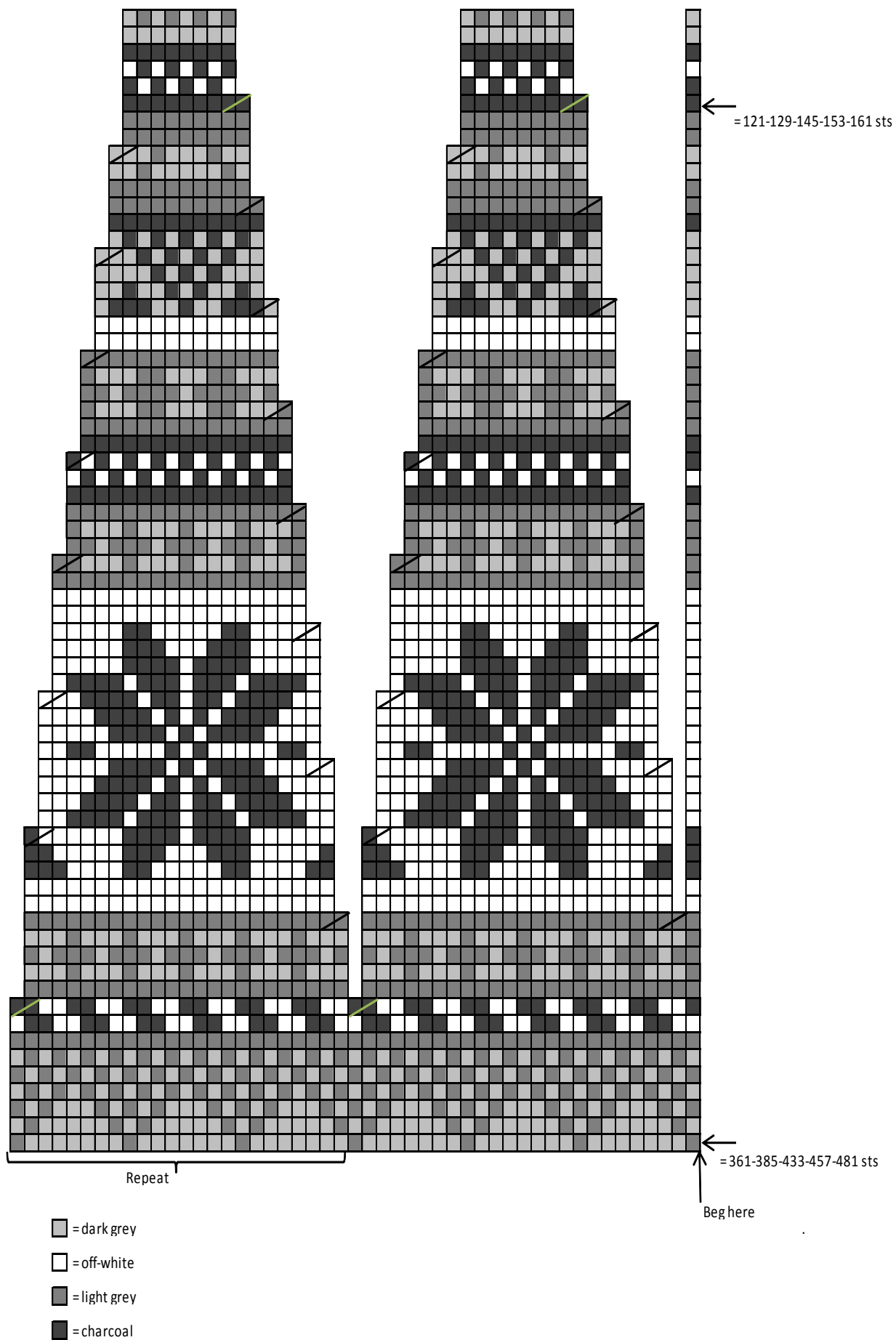
Work same for right front band, but with 8 buttonholes inside 4 sts from the edge. Buttonhole: Bind off 4 sts. Next row: Cast on 4 sts over the bound-off sts. Make first buttonhole just after hem rib, last one on last row before neck band, and rest evenly spaced apart.

Neck band:

Beg from right front band, cont with sts from yoke, and end with left front band sts = approx. 135-147-155-155-157 sts. Cont working back and forth in K1,P1 rib with dark grey yarn. When neck band measures approx. 3 ½ cm/1.4 in, bind off first and last 12 sts = front bands. Knit 1 row from WS over rem sts (= folding edge) + 3 ½ cm/1.4 in rib. Bind off rather loosely. Fold neck band in double, and sew on WS.

Sew underarm seams. Weave in all ends on WS. Sew on front bands, and buttons.

YOKE PATTERN



Viking Alpaca Fine

Setesdal sweater

1416-12

Size: S M L XL XXL

Bust: 86 - 94 - 103 - 111 - 120 cm

33.9-37-40.6-43.7-47.2 in

Length: 60 - 60 - 61 - 62 - 62 cm

23.6-23.6-24-24.4-24.4 in

Sleeve length: 48 - 49 - 50 - 50 - 50 cm

18.9-19.3-20.1-20.1-20.1 in

ALTERNATIVE YARNS: Viking Alpaca Fine (85% Superfine Alpaca, 15 % Highland wool), Viking Baby ull (100 % merino wool , superwash), 50 g ball

Grey, 615: 7-7-8-8-9 balls
White, 600: 3-3-3-4-4 balls

Circular needle and double pointed needles size 2 ½ and 3 mm – US 1 or 2 and 2 or 3 – UK/Canadian 13 or 12 and 11

Gauge: 28 sts = approx. 10 cm/4 in over St st using needles size 3 mm. **Check your gauge to ensure success**

When working in a patt with 2 clrs, it's important to maintain the order of yarns over your finger. Always hold the darker clr in front throughout the whole project.

Using needles size 2½ mm and dark grey yarn, cast on 240-264-288-312-336 sts. Work in rnds 3 cm/1.2 in in K1,P1 rib. Change to needles size 3 mm. Cont working in patt A. Place markers at each side, 121-133-145-157-169 sts for front, and 119-131-143-155-167 sts for back. When patt A is ready, cont working in patt B until work measures approx. 37-36-36-36-36 cm/14.6-14.2-14.2-14.2-14.2 in, end with 2 rnds in St st with grey yarn. Work in patt C (measures approx. 3 cm/1.2 in). Bind off on last rnd 12 sts at each side (6 sts both sides of the markers). Leave work aside, and knit the sleeves.

Sleeves

Using needles size 2½ mm and charcoal yarn, cast on 64-66-66-68-70 sts. Work in rib same as for body. Change to needles size 3 mm. Work 1 rnd in St st, and inc same time 1 st. Cont working patt A as charted. Place a marker mid under sleeve = beg of rnd. Inc 1 st both sides of the marker approx. every 2 ½-2-2-2-2 cm/1-0.8-0.8-0.8-0.8 in. When patt A is ready, cont working in patt B until sleeve measures 3 cm/1.2 in less than given length, or as desired (Note! End with 2 rnds in St st with grey yarn). After that work in patt B.

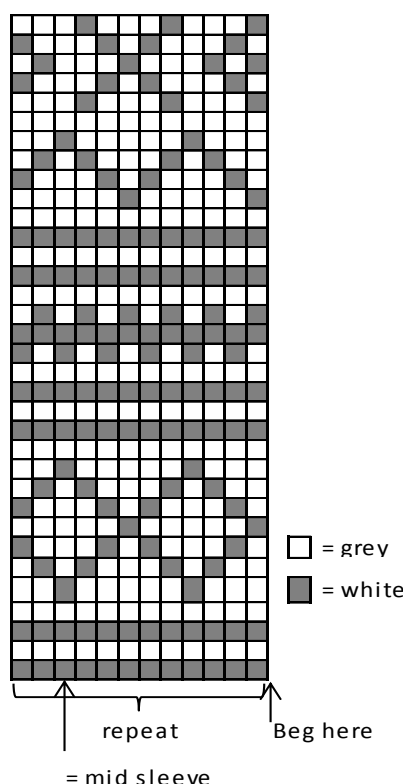
There is now 101-105-109-115-115 sts on a rnd. Bind off 12 sts mid under sleeve (6 sts both sides of the marker). Note! Bind off on same patt rnd as for body. Leave work aside, and work same for the other sleeve.

Yoke

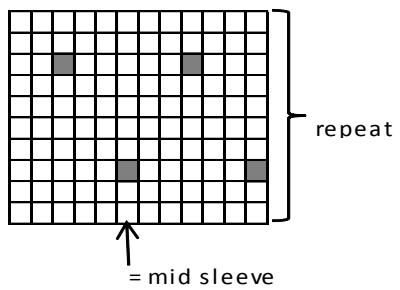
Slip all pieces on same circular needle, with sleeves over the bound-off armhole sts = 394-426-458-494-518 sts. Work 1 rnd in St st over all sts, and dec evenly across 2nd rnd number of sts to be 360-396-432-468-504 sts. Beg from back, left shoulder, and check from mid back where to beg. Cont working in rnds in patt, and dec as charted. There is now 120-132-144-156-168 sts on a rnd. Knit 1 rnd, and dec evenly number of sts to be 112-124-136-138-140 sts. Slip sts on holder.

Neck band: Cont working in rnds with grey yarn. Work in K1,P1 rib until neck band measures approx. 3½ cm/1.4 in. Purl 1 rnd (= folding edge) + 3 ½ cm/1.4 in in rib. Bind off rather loosely in rib. Fold neck band in double, and sew on WS. Sew underarm seams. Weave in all ends on WS.

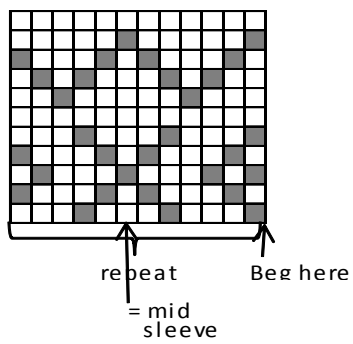
PATTERN A



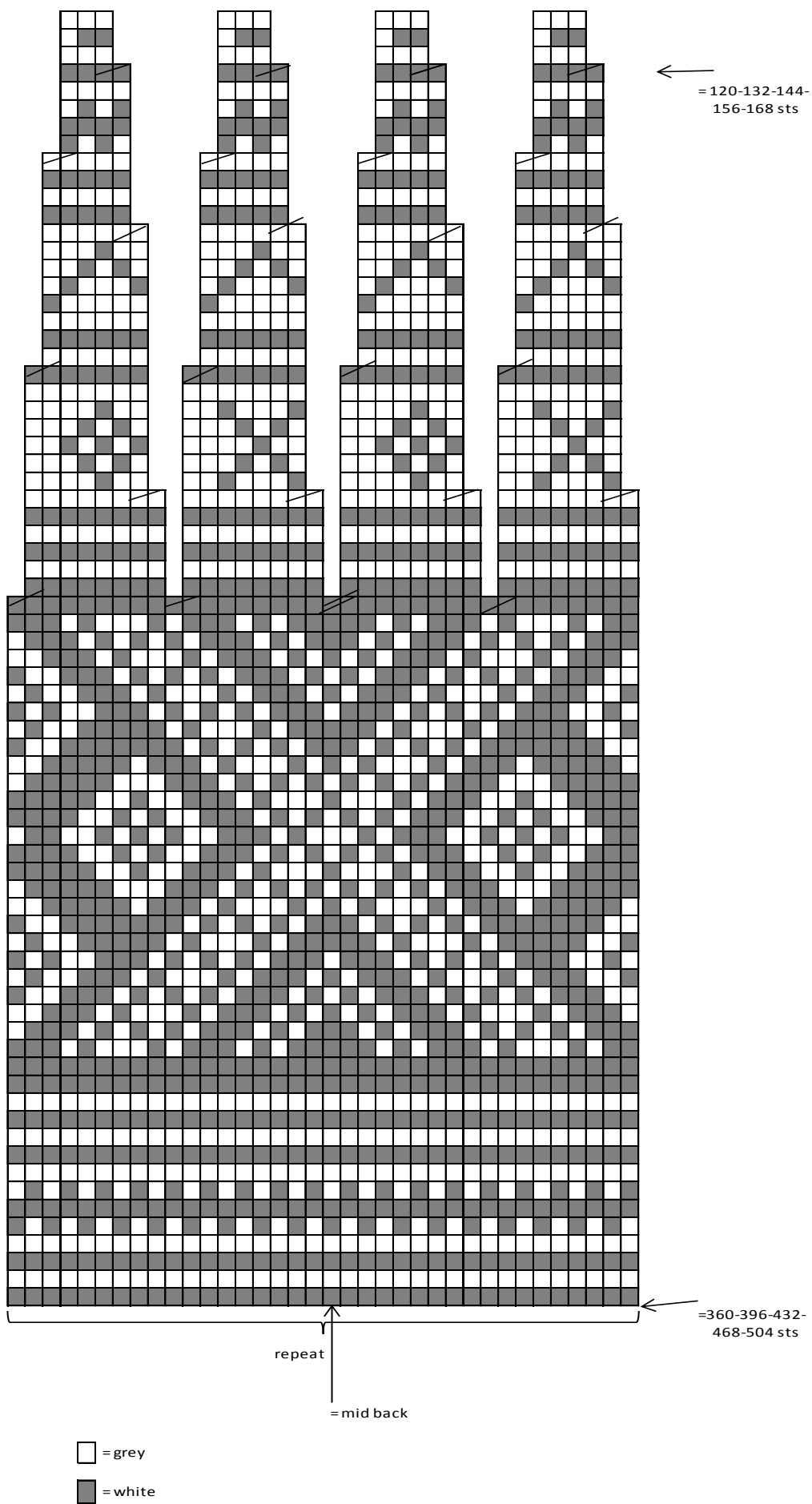
PATTERN B



PATTERN C



PATTERN D



Viking Alpaca Fine

Setesdal cardigan 1416-13

Size:	S	M	L	XL	XXL				
Bust:	89	-	98	-	106	-	115	-	124 cm
	35-38.6-41.8-45.3-48.8 in								
Length:	60	-	60	-	61	-	62	-	62 cm
	23.6-23.6-24-24.4-24.4 in								
Sleeve length:	50	-	50	-	51	-	51	-	52 cm
	19.7-19.7-20.1-20.1-20.5 in								

ALTERNATIVE YARNS: Viking Alpaca Fine (85% Superfine Alpaca, 15 % Highland wool), Viking Baby ull (100 % merino wool , superwash), 50 g ball

Charcoal, 603: 8-8-9-9-10 balls
Off-White, 602: 3-4-4-4 -5 balls

Circular needle and double pointed needles size 2 ½ and 3 mm – US 1 or 2 and 2 or 3 – UK/Canadian 13 or 12 and 11
+ 8 buttons

Gauge: 28 sts = approx. 10 cm/4 in over St st using needles size 3 mm. **Check your gauge to ensure success.**

When working in a patt with 2 clrs, it's important to maintain the order of yarns over your finger. Always hold the darker clr in front throughout the whole project.

Using needles size 2½ mm and charcoal clr yarn, cast on 265-289-313-337-361 sts. Work back and forth 3 cm/1.2 in in K1,P1 rib. Slip first and last 12 sts on holders = 241-265-289-313-337 sts. Change to needles size 3 mm. Cont working in rnds in patt A, and cast on 5 new sts to the end of the row. Purl these new sts with basic clr = to be cut open later on, not incl in the number of sts. Place markers at each side, 125-137-149-161-173 sts for back, and 58-64-70-76-82 sts for both fronts. When patt A is ready, cont working in St st. When work measures approx. 37-36-36-36-36 cm/14.6-14.2-14.2-14.2-14.2 in, work in patt B (= approx. 3 cm/1.2 in). Bind off on last rnd 12 sts at each side (6 sts both sides of the markers). Leave work aside, and knit the sleeves.

Sleeves

Using needles size 2½ mm and charcoal yarn, cast on 64-66-66-68-70 sts. Work in rnds in rib same as for body. Change to needles size 3 mm. Knit 1 rnd, and inc same time 1 st. Cont working in rnds in patt A as charted. Place a marker beg of rnd = mid under sleeve. Inc 1 st both sides of the marker approx. every

2½ -2-2-2-2 cm/1-0.8-0.8-0.8-0.8 in. When patt A is ready, cont working in St st with charcoal yarn. When sleeve measures 3 cm/1.2 in less than given length, or as desired, work in patt B. There is now 101-105-109-115-115 sts on a rnd. Bind off 12 sts mid under sleeve (6 sts both sides of the marker). Note! Bind off on same rnd as for body. Leave work aside, and knit same for the other sleeve.

Yoke

Slip all pieces on same circular needle, with sleeves over the bound-off sts for armholes = 395-427-459-495-519 sts on a rnd. Work 2 rnds in St st over all sts, and dec evenly on 2nd rnd number of sts to be 361-397-433-469-505 sts. Cont working in patt C, and dec as charted until 121-133-145-157-169 sts rem. Knit 1 rnd, and dec evenly across number of sts to be 111-123-135-137-139 sts. Slip sts on holder.

Finishing:

Dampen work slightly from WS. Sew 2 dense zigzag seams mid front. Cut open between seams. Sew normal zigzag over cut edges.

Right front band: Slip 12 sts from holder over needles size 2½ mm. Cont working in rib, and cast on 5 new sts with charcoal yarn to the edge facing body = seam allowance, work in St st. Cont working until front band measures up to neck edge. Bind off seam allowance sts, and slip rem sts on holder. Stretch front band slightly when measured.

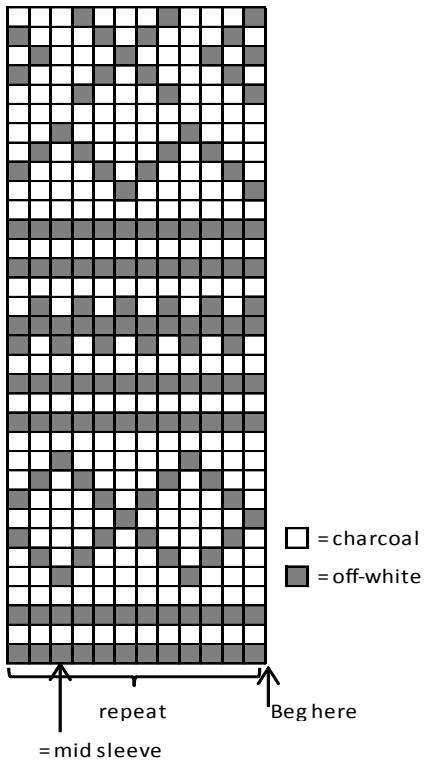
Work same for left front band, but with 8 buttonholes. Make first buttonhole just after hem rib, last one before neck band, and rest evenly spaced apart.

Neck band:

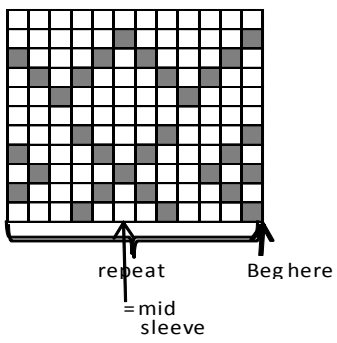
Beg from right front edge, cont around neck edge, and end with left front band = 135-147-159-161-163 sts. Cont working back and forth in K1,P1 rib with charcoal clr yarn. When neck band measures approx. 3 ½ cm/ 1.4 in, bind off first and last 12 sts = front bands. Knit 1 row over rem sts from WS (= folding edge) + 3 ½ cm/1.4 in rib. Bind off rather loosely. Fold neck band in double over cut edge, and sew on WS.

Sew underarm seams. Weave in all ends on WS. Sew on buttons.

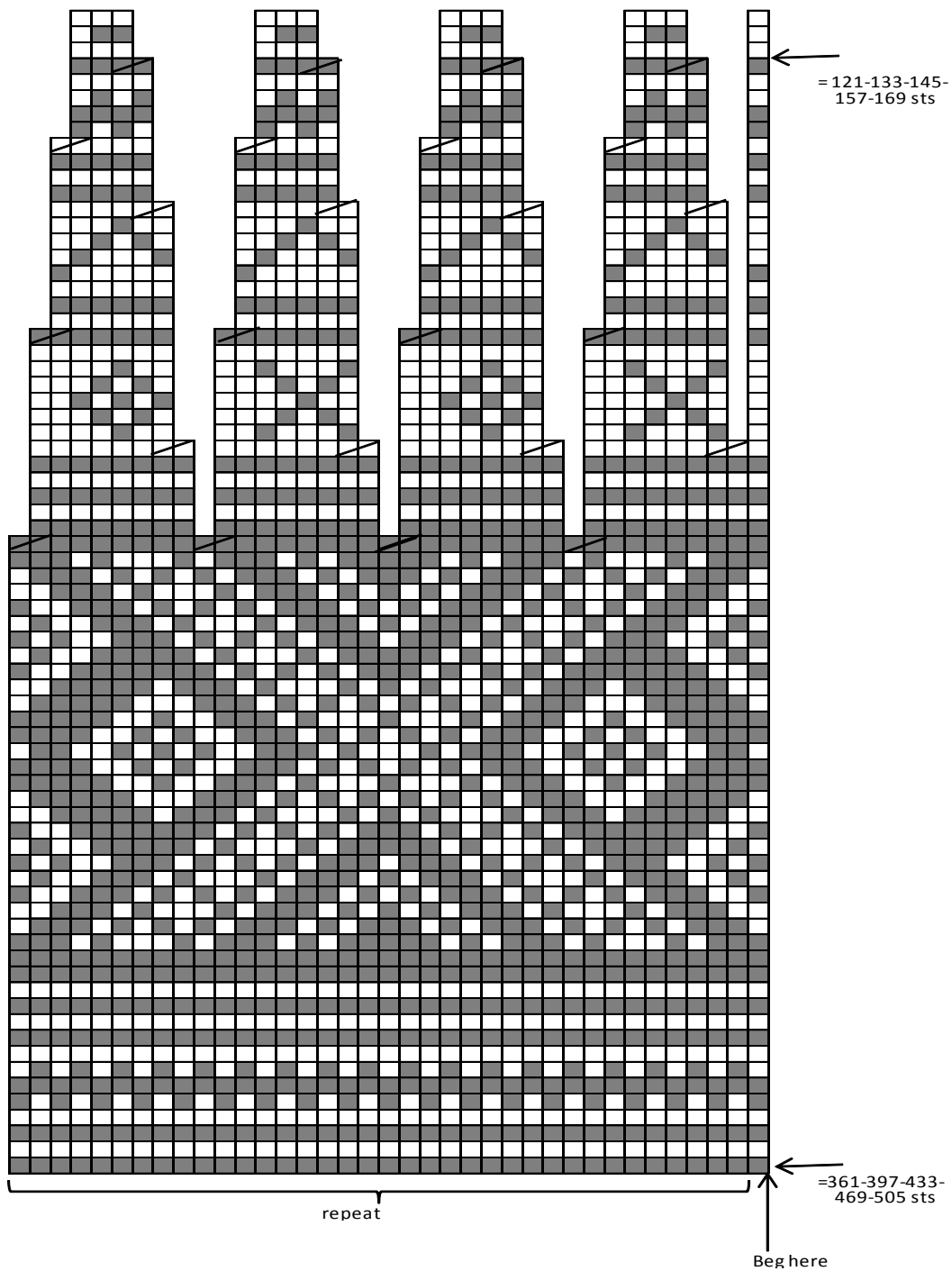
PATTERN A



PATTERN B



PATTERN C



- = charcoal
- = off-white

Viking Alpaca Fine

Fana sweater

1416-14

Size: XS- S- M- L- XL -XXL

Bust: 88 - 92 - 96 - 105 - 109 - 118 cm

34.6-36.2-38.8-41.4-42.9-46.4 in

Length: 63 - 64 - 65 - 66 - 67 - 67 cm

24.8-25.2-25.6-26-26.4-26.4 in

Sleeve length: 48 - 49 - 51 - 51 - 52 - 52 cm

18.9-19.3-20.1-20.1-20.5-20.5 in

ALTERNATIVE Yarns: Viking Alpaca Fine

(85% Superfine Alpaca, 15 % Highland wool),

Viking Baby ull (100 % merino wool ,superwash),

50 g ball

Green, 630:

4-5-5-6-6-6 balls

Off-White, 602:

4-4-5-5-6-6 balls

Circular needle size 2 ½ and 3 mm – US 1 or 2 and 2 or 3 – UK/Canadian 13 or 12 and 11

Gauge: 28 sts = approx. 10 cm/4 in over St st using needles size 3 mm. **Check your gauge to ensure success.**

When working in a patt with 2 clrs, it's important to maintain the order of yarns over your finger. Always hold the darker clr in front throughout the whole project.

Using needles size 2 ½ mm and green yarn, cast on 246 – 258 – 270 – 294 – 306 – 330 sts. Work in rnds approx. 2 cm/0.8 in in K1,P1 rib. Change to needles size 3 mm, and work in patt A. Place markers each side, 123 – 129 – 135 – 147 – 153 – 165 sts for both front and back.

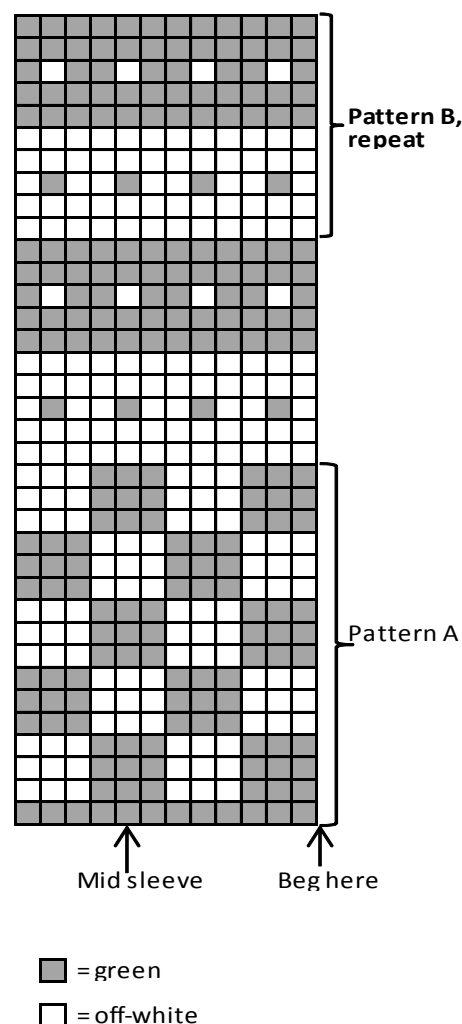
After patt A, cont working in rnds in patt B until work measures approx. 40 cm/15.7 in (end with a complete green stripe). Bind off on last rnd 12 sts at each side (6 sts both sides of the markers). Leave work aside, and knit the sleeves.

Sleeves: Using needles size 2 ½ mm and green yarn, cast on 54 – 54 – 60 – 60 – 66 – 66 sts. Work in rnds approx. 2 cm/0.8 in in K1,P1 rib. Change to needles size 3 mm. Work in patt A. After patt A, cont working in patt B, **but** inc 1 st into last st = 55 – 55 – 61 – 61 – 67 – 67 sts. Place a marker beg of rnd (= mid under sleeve), and inc 1 st both sides of the marker approx. every 1 ½ cm/0.6 in (same for all sizes) until there is 105 – 111 – 117 – 117 – 123 – 123 sts on a rnd, and sleeve measures approx. 48 – 49 – 51 – 51 – 52 – 52 cm/18.9-19.3-20.1-20.1-20.5-20.5 in (end with a complete green stripe). Bind off on last rnd 12 sts mid under sleeve (6 sts both sides of the marker). Work same for the other sleeve.

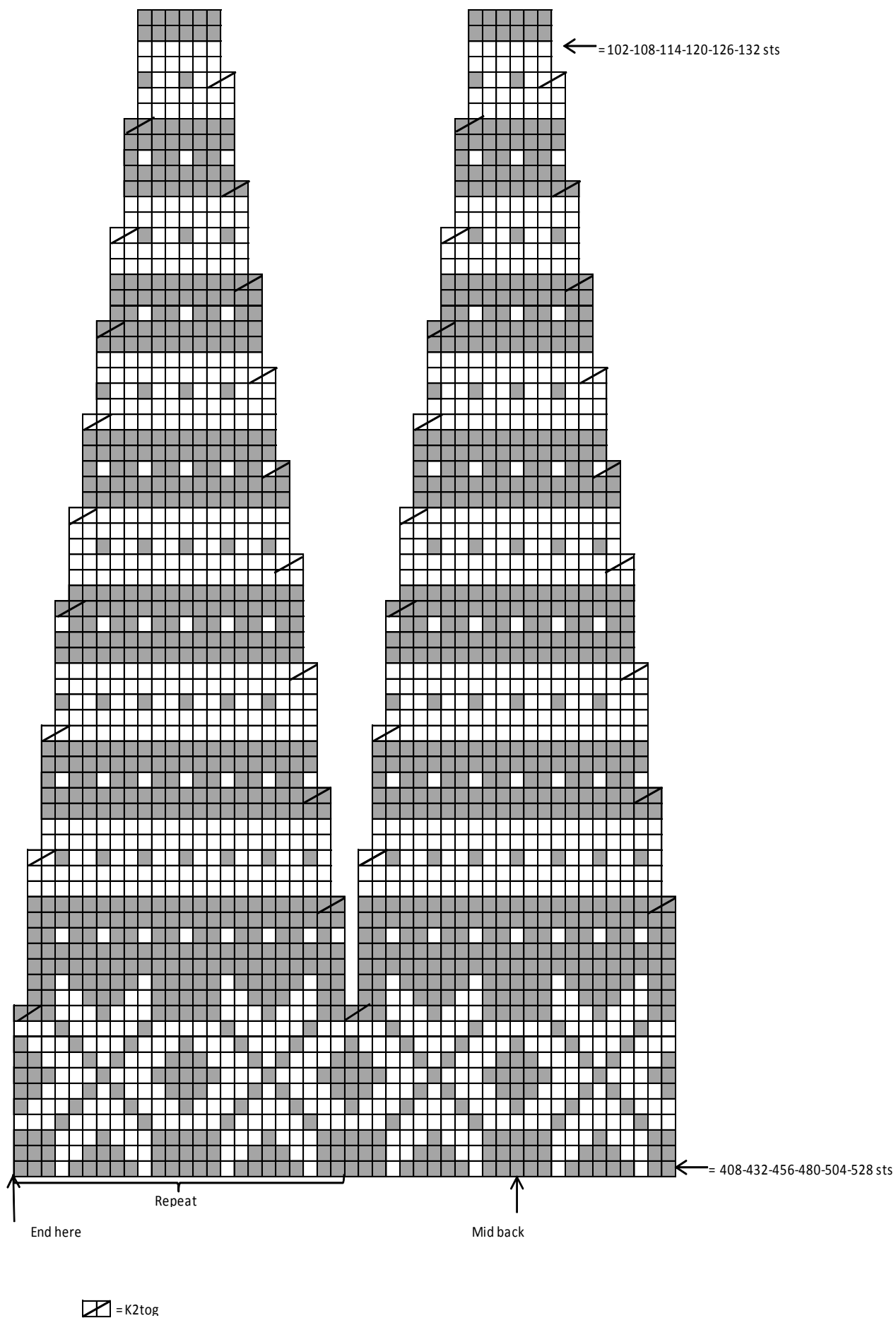
Yoke : Knit in all sts over same circular needle, with sleeves over the bound-off armhole sts = 408 – 432 – 456 – 480 – 504 – 528 sts on a rnd. Beg from back, left shoulder, and check from mid st where to beg patt. Work in patt C, and dec as charted. There is now 102-108-114-120-126-132 sts on a rnd.

Neck band: Change to needles size 2 ½ mm. Cont working with green yarn in K1,P1 rib until neck band measures approx. 6 – 6 – 7 – 7 – 8 – 8 cm/2.4-2.4-2.8-2.8-3.1-3.1 in. Bind off **rather loosely** in rib. Fold neck band in double, and sew on WS.

Finishing: Sew underarm seams. Weave in all ends on WS.



PATTERN C



Viking Alpaca Fine

Ingrid cardigan

1416-15

<u>Size:</u>	S	M	L	XL	XXL				
<u>Bust:</u>	93	-	102	-	111	-	119	-	128 cm
	36.6-40.2-43.7-46.8-50.3 in								
<u>Length:</u>	60	-	60	-	61	-	62	-	62 cm
	23.6-23.6-24-24.4-24.4 in								
<u>Sleeve length:</u>	50	-	50	-	51	-	51	-	52 cm
	19.7-19.7-20.1-20.1-20.5 in								

ALTERNATIVE YARNS: Viking Alpaca Fine (85% Superfine Alpaca, 15 % Highland wool),
Viking Baby ull (100 % merino wool ,superwash),
 50 g ball

Charcoal, 603: 7-8-8-9-9 balls
 Off-White, 602: 3-4-4-5-5 balls

Circular needle and double pointed needles size 3 mm
 – US 2 or 3 – UK/Canadian 11
 + 6 pairs of clasps

Gauge: 28 sts = approx. 10 cm/4 in over St st using needles size 3 mm. **Check your gauge to ensure success.**

When working in a patt with 2 clr, it's important to maintain the order of yarns over your finger. Always hold the darker clr in front throughout the whole project.

Using needles size 3 mm and charcoal clr yarn, cast on 246-270-294-318-342 sts. Work 12 rnds in St st.
Note! Purl 5 sts every rnd = to be cut open later on.
 Purl 1 rnd = folding edge + patt A as charted. Cont working in rnds in patt B as charted. Place markers at each side, 55-61-67-73-79 sts for both fronts, and 131-143-155-167-179 sts for back. Note! Mid 5 purl-sts are not incl. Cont working in patt B until work measures approx. 40-39-39-39-39 cm/15.7-15.4-15.4-15.4-15.4 in. Bind off 16 sts at each side (8 sts both sides of the markers). Leave work aside, and knit the sleeves.

Sleeves

Using needles size 3 mm and charcoal clr yarn, cast on 60-64-64-68-68 sts. Work for edge same as for body. Cont working in patt B (**Note! Inc 1 st on first rnd**), Place a marker beg of rnd = mid under sleeve. Inc 1 st both sides of the marker approx. every 2-2-2-2-2 cm/0.8-0.8-0.8-0.8-0.8 in until there is altog. 101-105-111-117-117 sts on a rnd. When sleeve measures the given length, or as desired, bind off 16 sts mid under sleeve (8 sts both sides of the marker). **Note! End with same patt rnd as for body.** Leave wok aside, and knit same for the other sleeve.

Yoke

Slip all pieces on same circular needle, with sleeves over the bound-off armhole sts = 379-411-447-483-507 sts on a rnd. **Note! 5 purl sts are not incl.)** Work in patt C as charted, and dec evenly across first rnd number of sts to be 361-409-433-457-481 sts. Cont working in rnds in patt, and dec as charted until 136-154-145-153-161 sts rem. Knit 1 rnd, and dec evenly across number of sts to be 109-117-117-125-125 sts. Slip sts on holder.

Finishing:

Dampen work slightly from WS. Sew 2 dense zigzag seams mid front. Cut open between seams. Sew normal zigzag seams over cut edges.

Neck band:

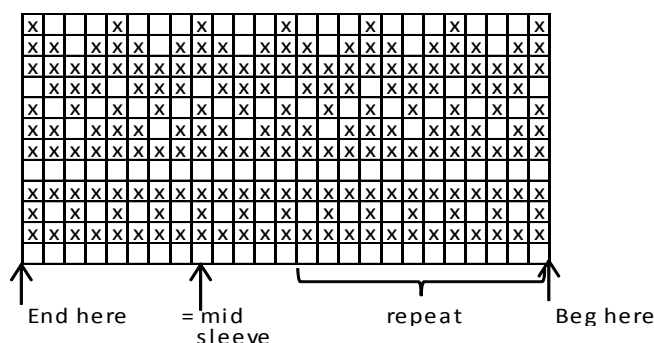
Work back and forth in patt A over 109-117-117-125-125 neck band sts. Purl 1 row = folding edge + 12 rows in St st with charcoal clr yarn. Bind off rather loosely. Fold neck band in double, and sew on WS.

Right front band: Using needles size 3 mm and charcoal clr yarn, pick or knit up approx. 14 sts per every 5 cm/2 in, or approx. 169-169-173-173-177 sts. Number of sts must be multiple with 4 + 1 sts. Knit 1 row = 1 rill. Work back and forth in patt A as charted + 1 knit 1 row from WS = folding edge, end with 12 rows in St st with charcoal clr yarn. Bind off.

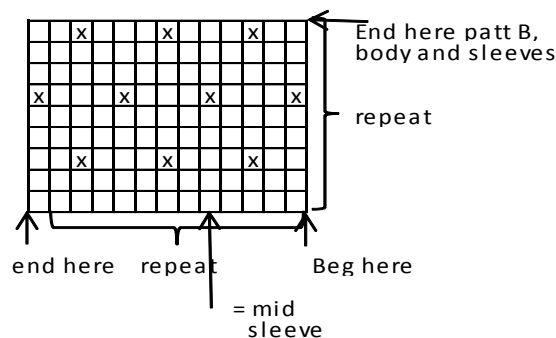
Work same for left front band.

Sew underarm seams. Weave in all ends on WS. Sew on clasps.

PATTERN A



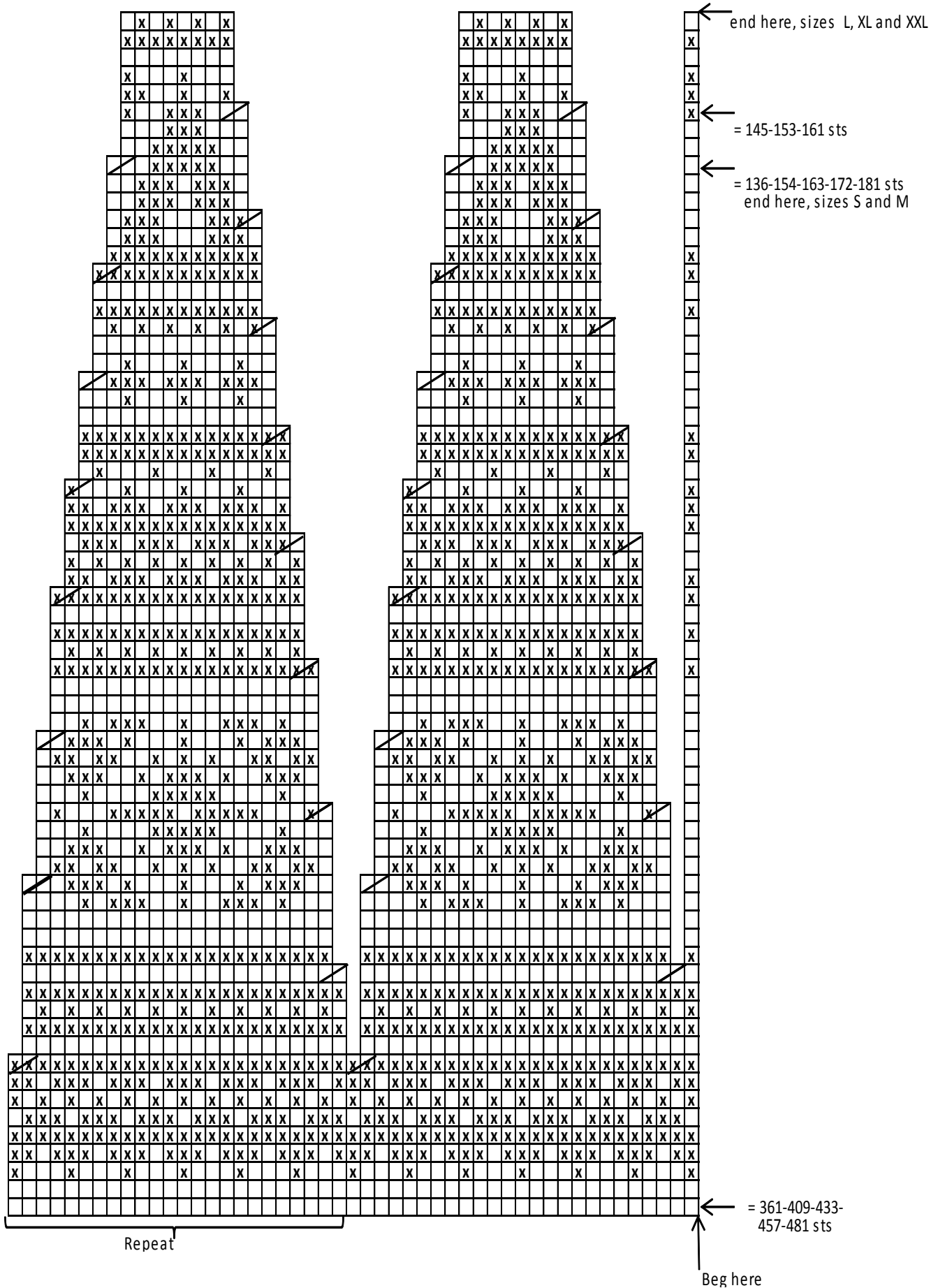
PATTERN B



□ = charcoal

⊠ = off-white

PATTERN C FOR YOKE



□ = charcoal

☒ = off-white

Viking Alpaca Fine

Gyda sweater

1416-16

Size: XS/S- M- L/ XL

Bust: 86- 103- 120 cm

33.9-40.6-47.2 in

Length: 63 - 65 - 67 cm

24.8-25.6-26.4 in

Sleeve length: 48 - 50 - 52 cm

18.9-19.7-20.5 in

ALTERNATIVE YARNS: Viking Alpaca Fine

(85% Superfine Alpaca, 15 % Highland wool),

Viking Baby ull (100 % merino wool superwash),

50 g ball

White, 600: 4-5-6 balls

Blue, 626: 2-3-4 balls

Navy Blue, 627: 2-3-3 balls

Grey, 615: 2-2-3 balls

Circular needle size 2 ½ and 3 mm – US 1 or 2 and 2 or 3 – UK/Canadian 13 or 12 and 11

Gauge: 28 sts = approx. 10 cm/4 in over St st using needles size 3 mm. **Check your gauge to ensure success.**

When working in patt with 2 clrs, it's important to maintain the order of yarns over your finger. Always hold the darker clr in front throughout the whole project.

Using needles size 2 ½ mm and navy blue yarn, cast on 240 – 288 – 336 sts. Work in rnds approx. 6 cm/2.4 in in K1,P1 rib. Change to needles size 3 mm. Work in patt I as charted, rep 2 times in height. Place markers at each side, 121 – 145 – 169 sts for front, and 119 – 143 – 167 sts for back.

Bind off on last rnd 12 sts at each side for armholes (6 sts both sides of the markers). Leave work aside, and knit the sleeves.

Sleeves: Using needles size 2 ½ mm and navy blue yarn, cast on 54 – 60 – 64 sts. Work in rnds approx. 4 – 5 – 6 cm/1.6-2-2.4 in in K1,P1 rib. Change to needles size 3 mm. Work 1 rnd in St st, and inc evenly across number of sts to be 59 – 69 – 71 sts.

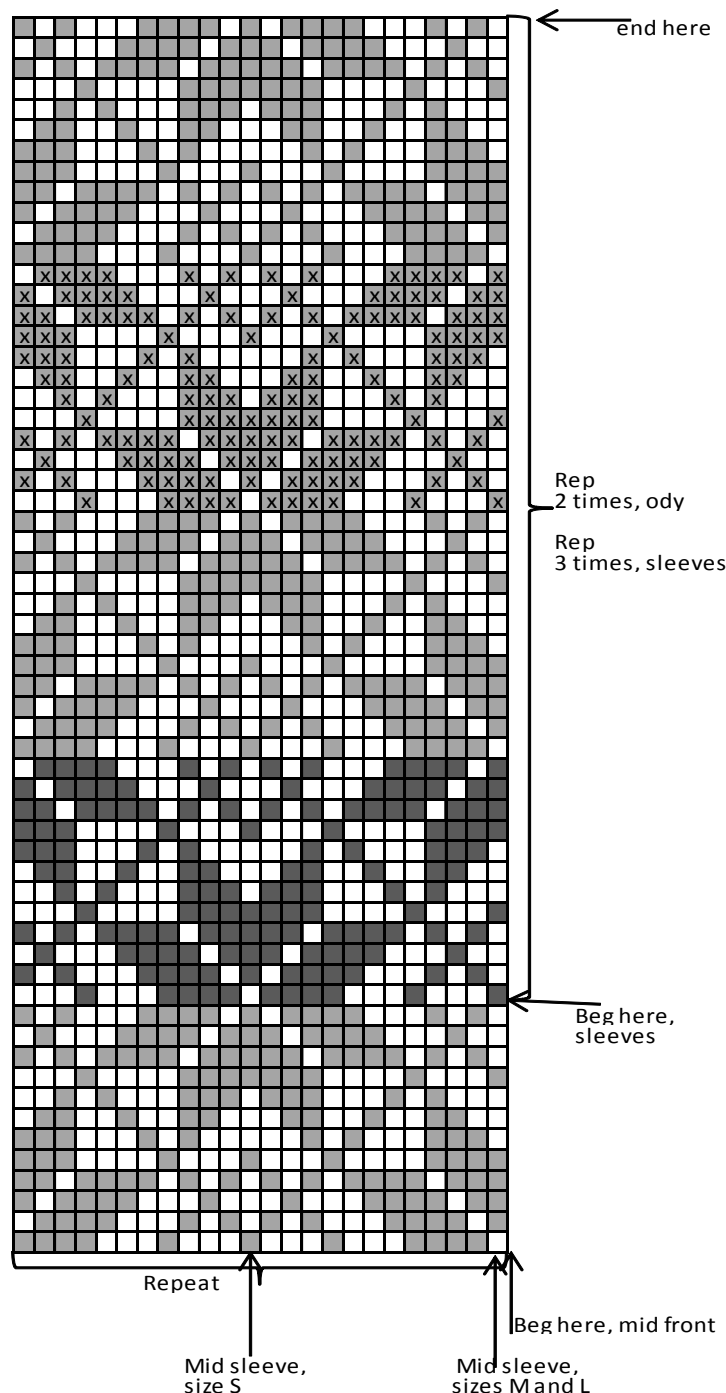
Place a marker beg of rnd. Work in patt I as charted (beg as the arrow points out for each size). Inc **same time** 1 st both sides of the marker approx. every 2 – 1 ½ – 1 ½ cm/0.8-0.6-0.6 in until there is 3 patt reports in height, and 97 – 121 – 121 sts on a rnd. Bind off on last rnd 13 sts mid under sleeve (6 sts before the marker, and 7 sts after it, so that patt will match with body). Work same for the other sleeve, but bind off 7 sts before the marker.

Yoke: Knit all pieces on same circular needle, with sleeves over the bound-off armhole sts = 384 – 480 – 528 sts on a rnd. Work in patt II, and dec as charted. There is now 80 – 100 – 110 sts on a rnd.

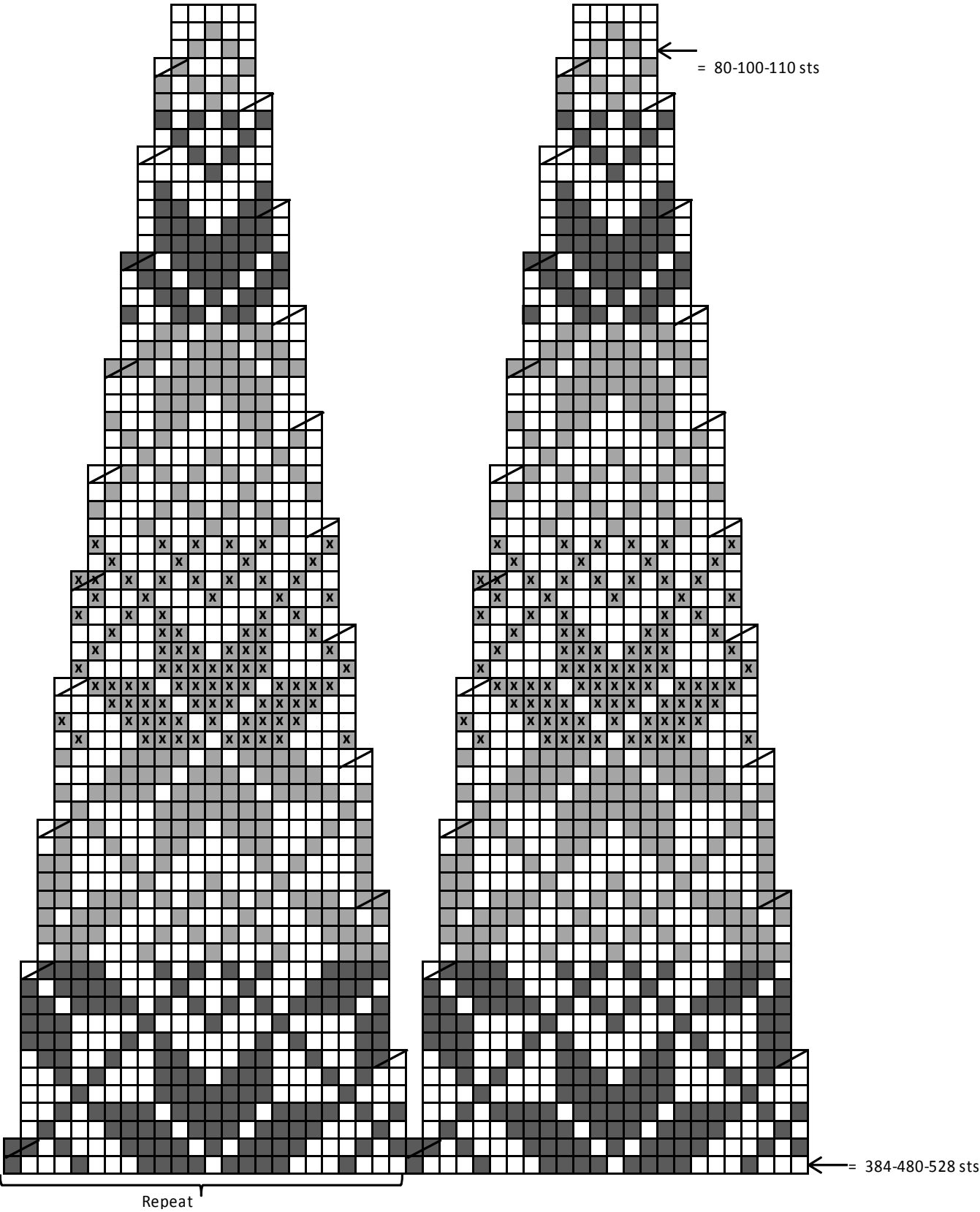
Neck band: Change to needles size 2 ½ mm, and navy blue yarn. Work 2 rnds in St st, and after that in K1,P1 rib until neck band measures approx. 7 – 8 – 8 cm/2.8-3.1-3.1 in. Bind off rather **loosely** in rib. Fold neck band in double, and sew on WS.

Finishing: Sew underarm seams. Weave in all ends on WS.

Pattern I



PATTERN II



- ☐ = White
- ☒ = Navy Blue
- ☐ = Blue
- ☒ = Grey
- ☒ = K2tog

Viking Alpaca Fine

Solveig sweater

1416-17

Size:	S	M	L	XL	XXL					
Bust:	83	-	92	-	97	-	112	-	120	cm
	32.7-36.2-38.2-44.1-47.2 in									
Length:	58	-	58	-	59	-	59	-	59	cm
	22.8-22.8-23.2-23.2-23.2 in									
Sleeve length:	50	-	50	-	51	-	51	-	52	cm
	19.7-19.7-20.1-20.1-20.5 in									

ALTERNATIVE YARN: Viking Alpaca Fine (85% alpaca, 15% highland wool), Viking Baby Ull (100% merino wool, Superwash), 50 g ball

Light Grey, 613:	5-5-6-6-7 balls
White, 600:	4-4-5-5-6 balls
Grayish Blue, 626:	2-2-2-3-3 balls

Circular needle and double needles size 2 ½ and 3 mm – US 1 or 2 and 2 or 3 – UK/Canadian 13 or 12 and 11

Gauge: 28 sts = approx. 10 cm/4 in over St st using needles size 3 mm. **Check your gauge to ensure success.**

When working in patt with 2 clrs, it's important to maintain the order of yarns over your finger. Always hold the darker clr in front throughout the whole project

Using needles size 2½ mm and light grey yarn, cast on 232-256-272-312-336 sts. Work in rnds 5-5-6-6-6 cm/2-2-2.4-2.4-2.4 in in K1,P1 rib. Change to needles size 3 mm. Cont working in patt as charted (2 patt reports in height). Place markers at each side, 117-129-137-157-169 sts for front, and 115-127-135-155-167 sts for back. Cont working until work measures approx. 34-34-35-35-35 cm/13.4-13.4-13.8-13.8-13.8 in. Bind off 16 sts at each side (8 sts both sides of the markers). Leave work aside, and knit the sleeves.

Sleeves

Using needles size 2½ mm and light grey yarn, cast on 66-68-68-70-72 sts. Work in rib same as for body. Measure from top of the body length for sleeves, and check from where to beg patt. It's important, that you end sleeves with the same patt rnds as for body. Change to needles size 3 mm, and inc 1 st. Cont working in patt, and place a marker beg of rnd = mid under sleeve. Inc 1 st both sides of the marker approx. every 2-2-2-2-2 cm/0.8-0.8-0.8-0.8-0.8 in until there is altog. 105-105-113-113-121 sts on a rnd. When sleeve measures the given length, or as desired, end with same rnd as for body. Bind off 16 sts mid under

sleeve (8 sts both sides of the marker). Leave work aside, and knit same for the other sleeve.

Yoke

Slip all pieces on same circular needle, with sleeves over the bound-off armhole sts = 378-402-434-474-514 sts on a rnd. Cont working in pat as charted, and adjust number of sts on first rnd to be 376-400-432-472-512 sts. Dec as charted until 136-142-144-148-152 sts rem. Knit 2 rnds with light grey yarn. Change to a short circular needle size 2½ mm. Cont working with light grey yarn in K1,P1 rib until neck band measures approx. 3 ½ cm/1.4 in. Purl 1 rnd over all sts (= folding edge) + 3 ½ cm/1.4 in rib. Bind off rather loosely. Fold neck band in double, and sew on WS.

Sew underarm seams. Weave in all ends on WS.

Viking Alpaca Fine

Elida cardigan

1416-18

Size S M L XL
XXL

Bust: 87 - 96 - 106 - 115 - 124 cm
34.3-38.8-41.8-45.3-48 in

Length: 60 - 60 - 61 - 62 - 62 cm
23.6-23.6-24-24.4-24.4 in

Sleeve length: 50 - 51 - 51 - 52 - 52 cm
19.7-20.1-20.1-20.5-20.5 in

ALTERNATIVE YARNS: Viking Alpaca Fine (85% alpaca, 15% highland wool), Viking Baby Ull (100% merino wool, Superwash), 50 g ball

Grayish Blue, 626: 5-6-6-7-7 balls
Off-White, 602: 5-5-6-6-7 balls

Circular needle and double pointed needles size 2 ½ and 3 mm – US 1 or 2 and 2 or 3 – UK/Canadian 13 or 12 and 11
+ 7 buttons

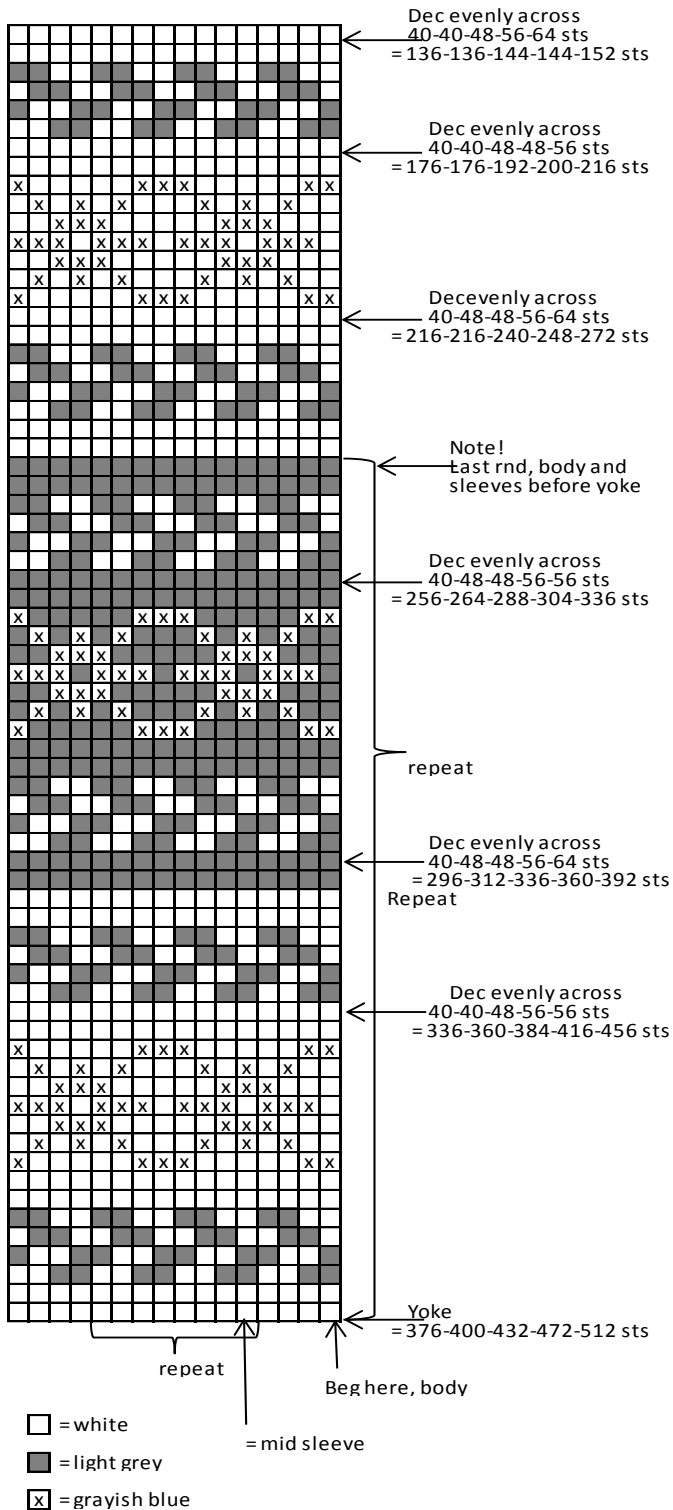
Gauge: 28 sts = approx. 10 cm/4 in over St st using needles size 3 mm. **Check your gauge to ensure success.**

When working in a patt with 2 clrs, it's important to maintain the order of yarns over your finger. Always hold the darker clr in front throughout the whole project.

Using needles size 2½ mm and grayish blue yarn, cast on 259-285-311-337-363 sts. Work back and forth 3 cm/1.2 in in K1,P1 rib. Slip first and last 12 sts on holders (= front band sts). Cast on 5 new sts to the end of the row (= purl with basic clr, to be cut open later on). Change to needles size 3 mm. Cont working in patt as charted. Place markers at both sides, 121-135-147-161-175 sts for back, and 57-63-70-76-82 sts for each front (5 purl-sts not incl). Cont working until work measures approx. 60-60-61-62-62 cm/23.6-23.6-24-24.4-24.4 in.

Sleeves

Using needles size 2½ mm and grayish blue yarn, cast on 64-64-64-68-70 sts. Work for edge same as for body. Change to needles size 3 mm, and inc 1 st. Cont working in rnds in patt as charted (check from mid st where to beg patt), **and** place a marker beg of rnd = mid under sleeve. Inc 1 st both sides of the marker approx. every 1 ½ cm/0.6 in (same for all sizes) until there is altog. 117-117-123-129-137 sts on a rnd. Work until sleeve measures the given length, or desired length (end with a complete or half border).



Turn inside out, and work 7 rnds in St st for seam allowance. Bind off rather loosely.
Work same for the other sleeve.

Finishing

Dampen work slightly from WS. Sew 2 dense zigzag seams around armholes (measure width from sleeve top), and mid front. Cut open between seams. Sew normal zigzag over cut edges. Join shoulder seams, leaving approx. 17-17-18-18-19 cm/ in mid front and back for neck edge.

Right front band: Slip 12 sts from holder on needles size 2½ mm. Cont working in rib, and cast on 5 new sts with grayish blue yarn to the edge facing the body = seam allowance, work in St st. Cont working until front band measures approx. 7-7-8-8-9 cm/2.8-2.8-3.1-3.1-3.6 in less than total length. Front band must not be too long. Bind off seam allowance sts, and slip rem sts on holder.

Work same for left front band, but with 7 buttonholes. Make first buttonhole just after hem rib, last one on last row before neck band, and rest evenly spaced apart. Buttonhole, inside 5 sts from the edge: Bind off 3 sts, Next row: Cast on 3 sts over the bound-off sts. Bind off seam allowance sts when left front band measures same as right one, leave rem sts on holder.

Neck band: Sew a curving marker thread along neck edge on both fronts, approx. 7-7-8-8-9 cm/2.8-2.8-3.1-3.1-3.5 in below upper edge. Using needles size 2½ mm and grayish blue yarn, pick or knit up as foll: Beg from right front, slip front band sts on needles, pick up approx. 25-25-27-27-29 sts along marked line, 47-47-49-51-53 sts from back, 25-25-27-27-29 sts along the other side, and slip left front band sts on needles = 121-121-127-127-135 sts. Work back and forth 3 cm/1.2 in in K1,P1 rib. Bind off first and last 12 sts. Purl 1 row over rem sts = folding edge + 3 cm/1.2 in in rib. Bind off rather loosely.

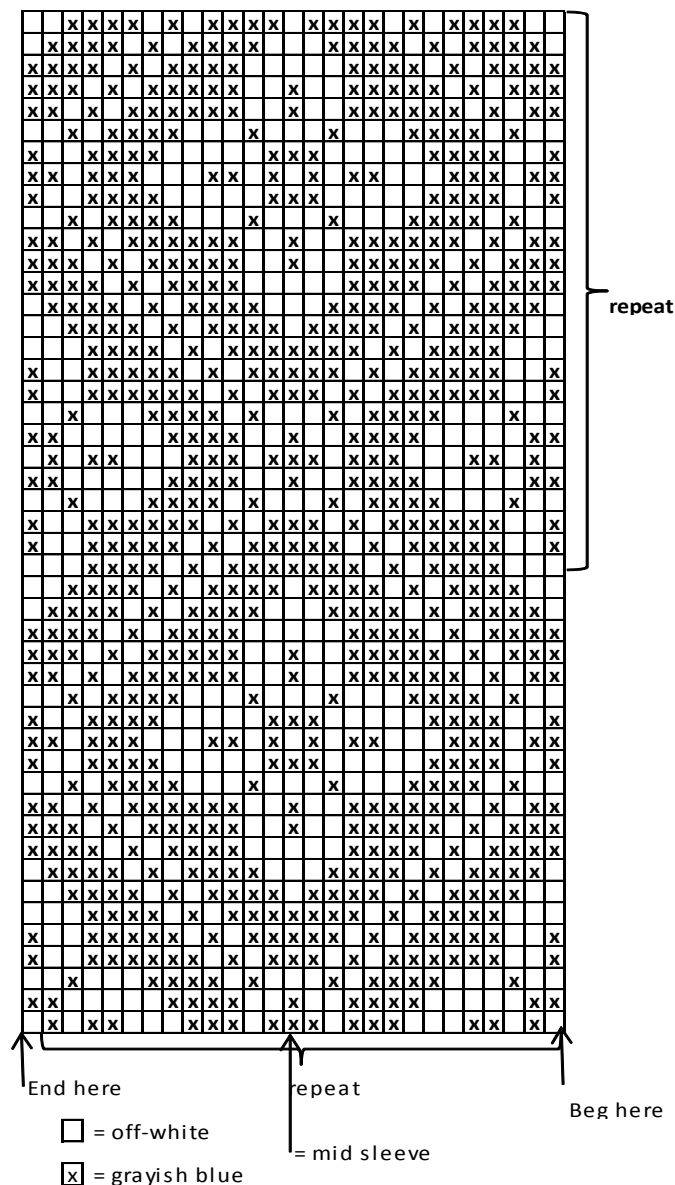
Sew 2 dense zigzag seams along innerside of neck band. Cut off all extras. Sew normal zigzag over cut edges.

Fold neck band in double over cut edge, and sew on WS.

Sew on front bands, and sew seam allowances over cut edges. Sew on sleeves, and seam allowances over cut edges.

Sew on buttons.

Weave in all ends on WS.



Viking Alpaca Fine

Åsne cardigan

1416-19

Size: S M L XL
XXL

Bust: 83 - 92 - 97 - 112 - 120 cm

32.7-36.2-38.2-44.1-47.2 in

Length: 60 - 60 - 61 - 62 - 62 cm

23.6-23.6-24-24.4-24.4 in

Sleeve length: 50 - 50 - 51 - 51 - 52 cm

19.7-19.7-20.1-20.1-20.5 in

ALTERNATIVE YARNS: Viking Alpaca Fine
(85% alpaca, 15% highland wool), Baby Ull (100% merino wool, Superwash), 50 g ball

Off-White, 602: 5-5-6-6-7 balls
Green, 630: 6-6-7-7-8 balls
Navy Blue, 627: 2-3-3-3-4 balls

Circular needle and double pointed needles size 2 ½ and 3 mm – US 1 or 2 and 2 or 3 – UK/Canadian 13 or 12 and 11

+ 6-6-7-7-7 buttons

Gauge: 28 sts = approx. 10 cm/4 in over St st using needles size 3 mm. **Check your gauge to ensure success.**

When working in a patt with 2 clrs, it's important to maintain the order of clrs over your finger. Always hold the darker clr in front throughout the whole project.

Using needles size 2½ mm and green yarn, cast on 245-269-285-325-349 sts. Work back and forth 3 cm/1.2 in in K1,P1 rib. Slip first and last 10 sts on holder (= front band sts). Cast on 6 new sts to the end of rnd (purl with basic clr, to be cut open later on). Cont working in rnds in patt as charted. Place markers each side, 117-129-137-157-169 sts for back, and 54-60-64-74-80 sts for each front (6 purl-sts mid front are not incl.). Cont working until work measures approx. 60-60-61-62-62 cm/23.6-23.6-24-24.4-24.4 in.

Sleeves

Using needles size 2½ mm and green yarn, cast on 64-64-64-68-70 sts. Work in rnds in rib same as for body. Change to needles size 3 mm, and inc 1 st. Cont working in patt as charted (check from mid st where to beg patt), **and** place a marker beg of rnd = mid under sleeve. Inc 1 st both sides of the marker approx. every 1 ½ cm/0.6 in (same for all sizes) until there is 117-117-123-129-137 sts on a row. When sleeve measures the given length, or as desired (end with a complete or half border), turn work inside out, and work 7 rnds in St st with basic clr for seam allowance. Bind off rather loosely.

Work same for the other sleeve.

Finishing

Dampen work slightly from WS. Sew 2 dense zigzag seams around armholes (measure width from sleeve top), and mid front. Cut open between seams. Sew normal zigzag over cut edges. Join shoulder seams, leaving approx. 17-17-18-18-19 cm/ in mid front and back for neck edge.

Left front band: Slip 10 front band sts from holder on needles size 2½ mm. Cont working in rib, but cast on with green yarn 5 new sts to the edge facing body = seam allowance, work in St st. Cont working until front band measures approx. 7-7-8-8-9 cm/2.8-2.8-3.1-3.1-3.5 in less than total length. Front band must not be too long.

Work same for right front band, but make 6-6-7-7-7 buttonholes. Make first buttonhole on first row after

hem rib, last one on last row before neck band, and rest evenly spaced apart. Bind off seam allowance sts.

Neck band: Sew a curving marker thread for neck edge on both fronts, approx. 7-7-8-8-9 cm/2.8-2.8-3.1-3.1-3.5 in below upper edge. Using needles size 2½ mm and green yarn, pick or knit up as foll: Beg from right front, slip right front band sts over needles pick up approx. 25-25-27-27-29 sts along marked line, 47-47-49-51-53 sts from back, and 25-25-27-27-29 sts along the other side, and slip left front band sts from holder on needles = 117-117-123-123-131 sts on a row. Work back and forth 3 cm/1.2 in in K1,P1 rib. Bind off first and last 10 sts, purl 1 row over rem sts = folding edge + 3 cm/1.2 in in rib. Bind off rather loosely.

Sew 2 dense zigzag seams along the innerside of neck band. Cut off all extras. Sew normal zigzag over cut edges. Fold neck band in double over cut edge, and sew on WS. Sew on front bands, and seam allowances over cut edges. Sew on sleeves, and seam allowances over cut edges. Sew on buttons.

Weave in all ends on WS.

