

ch = chain stitch, sc = single crochet, dc = double crochet, ch-space = chain space, sl st = slip stitch, dc-cl = double crochet cluster

Seed st

1st row: *K1, P1*

2nd row: Knit all p-sts, purl all k-sts

Rep 2nd row.

SCARF (each square measures approx. 14x14 cm (5.5x5.5 in))

Worked in squares which will be sewn tog.

Ch5, join into ring with 1 sl st.

1st rnd: Ch3 (= first dc) + 2 dc into ring, *ch2, 3 dc*, rep *-* across the rnd + ch2, end with 1 sl st to third ch-st beg of rnd.

2nd rnd: Change clr. Ch3 (= first dc) + 2 dc into first ch-space, ch2 + 3 dc into same ch-space (= corner), *3 dc + ch2 + 3 dc to same ch-space (= second corner)*, rep *-* 2 more times, end with 1 sl st to third ch-st beg of rnd. Turn.

3rd rnd: Ch3 + 2 dc between dc-cl, *3 dc to next ch-space + ch2 + 3 dc to same ch-space (= corner), 3 dc between next 2 dc-cl*, rep *-* altog. 3 times, 3 dc to next ch-space + ch2 + 3 dc to same ch-space (= corner), end with 1 sl st to third ch-st beg of rnd. Turn.

4th rnd: Change clr. Ch3 + 2 dc between dc-cl, *3 dc to next ch-space + ch2 + 3 dc to same ch-space (= corner), 3 dc between next 2 dc-cl*, rep *-* altog. 3 times, 3 dc + ch2 + 3 dc to same ch-space (= corner), 3 dc between next 2 dc-cl, end with 1 sl st to third ch-st beg of rnd. Break yarn, and use it for joining the squares.

Make altog. 11 squares, 6 squares 1, and 5 squares 2 (scarf begins and ends with same clr squares). Sew squares tog. beg and end with square 1. Scarf measures approx. 155 cm (61.1 in).

HAT

Using needles size 6 mm and petrol clr yarn, cast on 51-55 sts.

Work in rnds 4 cm (in) in Seed st. Change to needles size 7 mm.

Knit 1 rnd, adjusting evenly across the rnd the number of sts to be 64-68 sts. Next rnd = Eyelet rnd: *K2tog, 1 yo*, rep *-* across the rnd. Cont working in St st until work measures approx. 17-19 cm (6.7-7.5 in). Beg crown dec: *K2, K2tog*, rep *-* across the rnd.

Work 2 rnds without dec. Rep dec 1 more time, with 1st less between the dec = 32-34 sts. Work 2 rnds without dec. Next rnd: Knit all sts tog in pairs = 16-17 sts. Work 1 rnd without dec, and rep last dec rnd until 8-8 sts rem. Break yarn, thread through rem sts, pull tightly, and weave in on WS. Twist a cord using multiclr yarn, and thread through the eyelet rnd. Tie a bow on the side.

MITTENS

Using needles size 6 mm and petrol clr yarn, cast on 20-24 sts.

Work in rnds 6-8 cm (2.4-3.1 in) in K1,P1 rib. Eyelet rnd: *K2tog, 1 yo*, rep ** across the rnd. Change to needles size 7 mm. Cont working in rnds in St st until work measures approx. 10-12 cm (4-4.7 in). Place markers each side. Thumb opening: Work until 1 st rem before a marker, slip next 3 sts on holder, cast on 3sts, and cont working in rnds in St st until work measures approx. 16-18 cm (6.3-7.1 in). Divide sts on 4 dpn (5-6 sts). Cont working in rnds, and dec 1 st (= K2tog) beg of each needle. Rep dec every 2nd rnd 2 times, and then every rnd until 4-4 sts rem. Break yarn, thread through rem sts, and weave in on WS.

Thumb: Slip 3 sts from holder on needles size 7 mm, and pick or knit up 3 sts from the other edge of the thumb opening + 1 st each side = 8 sts. Cont working in rnds in St st until thumb measures approx. 4-5 cm (1.6-2 in) (or desired length). Next rnd: Knit all sts tog in pairs. Break yarn, thread through rem sts, and weave in on WS. Twist a cord using multiclr yarn, and thread through eyelet rnd. Make 2 tassels (approx. 5 cm (2 in) long), and fasten to each end of the cord.

Viking Balder

1201-3

Tunic, legwarmers, wristwarmers and hat

Size	4/6	8/10	12/14 yrs
Chest, approx.	65	71	76 cm
	25.6	28	29.9 in
Length, approx.	53	62	73 cm
	20.9	24.4	28.7 in
Length, legwarmers, approx.	30	33	36 cm
	11.8	13	14.2 in

ALTERNATIVE Yarn: Viking Balder (100% wool, superwash), 100 g skein, Viking Alpaca Superfine (100% alpaca), Viking Naturgarn (100% wool), 50 g ball

Tunic:

White, 402	3	3	4 skeins
Rosa, 466	1	1	1 skein
Cherry, 464	1	1	1 skein
Grey, 415 ca	1	1	1 skein

Legwarmers/wristwarmers

White, 402	1	1	2 skeins
Rosa, 466	1	1	2 skeins
Cherry, 464	1	1	1 skein
Grey, 415	1	1	1 skein

Double pointed needles and circular needle size 7 mm – US 10½ – UK/Canadian 2

Gauge: 12 sts = approx. 10 cm (4 in) over St st using needles 7 mm. **Check your gauge to ensure success.**

TUNIC

Using needles size 7 mm and pink yarn, cast on 94-106-116 sts.

Work in rnds 3 cm (1.2 m) in K1tbl,P1 rib. Change to white yarn.

Place markers each side, 47-53-59 sts for back, and 47-51-57 sts for front. Cont working in St st. When work measures approx. 18-27-37 cm (7.1-10.6-14.6 in), dec 1 st after each side marker, rep dec 4-5-6 times every 4th rnd. When work measures 34-43-52 cm (13.4-16.9-20.5 in), bind off 8 sts each side (4 sts both sides of the markers) for armholes. Next rnd: Cast on 41-43-46 sts over the bound-off sts for armholes = 144-156-168 sts on a rnd. Cont working in rnds in patt I, and then in patt II as charted. When work measures 53-62-73 cm (20.9-24.4-28.7 in), measured from cast-on edge, dec evenly across the rnd the number of sts to be 40-44-48 sts. Change to pink yarn. Knit 1 rnd. Work 3 cm (1.2 in) in K1tbl,P1 rib. Bind off rather loosely rib.

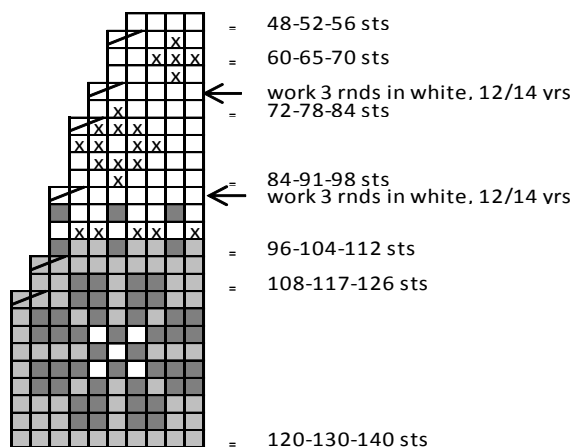
Armhole bands

Using needles size 7 mm and pink yarn, pick or knit up 48-50-54 sts. Work in rnds 3 cm (1.2 in) in K1tbl,P1.

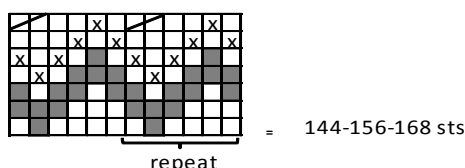
Work same for the other armhole band.

Weave in all ends on WS.

PATTERN II



PATTERN I



- ☐ = white
- ☐ = grey
- ☐ = cherry
- ☒ = pink
- ☒ = K2tog

LEGWARMERS

Using needles size 7 mm and pink yarn, cast on 24-28-32 sts. Work in rnds 3-4-5 cm (1.2-1.6-2 in) in K1tbl,P1 rib. Change to white yarn. Knit 1 rnd, adjusting evenly across the rnd the number of sts to be 36 sts (all sizes). Cont working in St st until work measures 8-10-12 cm (3.1-4-4.7 in), measured from cast-on edge. Cont working in patt A+B+C as charted.

Work 2 rnds with white yarn, and dec evenly across the last rnd the number of sts to be 28-32-36 sts. Change to pink yarn. Knit 1 rnd. Work 3-4-5 cm (1.2-1.6-2 in) in K1tbl,P1 rib. Bind off in rib.

Work same for the other legwarmer.

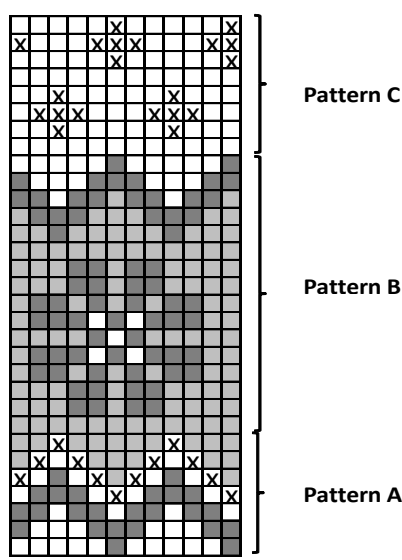
Weave in all ends on WS.

WRISTWARMERS

Using needles size 7 mm and pink yarn, cast on 20-22-24 sts. Work in rnds 3 cm (1.2 in) in K1tbl,P1 rib. Knit 1 rnd, inc evenly across the rnd the number of sts to be 24 sts (all sizes). Work in patt B+C. 1st rnd, patt, bind off for thumb opening C: K1, bind off 3 sts (next rnd: cast on 3 sts over the bound-off sts), knit rem sts. Note: Work only 4 rnds of patt C for the smallest size = 1 patt row. Knit 1 rnd with white yarn, dec evenly across the rnd the number of sts to be 18-20-22 sts. Change to pink yarn, and work 3 cm (1.2 in) in K1tbl,P1 rib. Bind off in rib (not too loosely).

Work same for the other wristwarmer. Bind off for the thumb opening as foll: K8, bind off 3 sts (next rnd: cast on 3 sts over the bound-off sts), knit rem sts.

Weave in all ends on WS.



- ☐ = repeat
- ☐ = white
- ☐ = grey
- ☐ = cherry
- ☒ = pink

Viking Balder

Cardigan

1201-4

Size:	4	6	8	10 vrs
Chest, approx.	65	70	75	80 cm
	25.6	27.6	29.5	31.5 in
Length, approx.	40	45	50	54 cm
	15.7	17.7	19.7	21.3 in
Sleeve, approx.	31	34	38	42 cm
	12.2	13	15	16.1 in

ALTERNATIVE YARNS: Viking Balder (100% wool, superwash), 100 g skeins, Viking Naturgarn (100% wool), Viking Alpaca Superfine (100% alpaca), 50 g ball

Off-white, 400 5 5 6 6 skeins

Circular needle and double pointed needles size 6 and 7 mm – US 10 and 10½ – UK/Canadian 4 and 2
+ 5-5-6-6 buttons

Gauge: 12 sts = approx. 10 cm (4 in) over St st using needles size 7 mm. **Check your gauge to ensure success.**

Seed st:

1st row: *K1, P1*

2nd row: Knit all p-sts, purl all k-sts.

Rep 2nd row.

CARDIGAN

Using needles size 7 mm, cast on 78-84-90-96 sts. Work back and

forth 3 cm (1.2 in) in Seed st (same for all sizes). Cont working back and forth in St st until work measures approx. 22-26-30-33 cm (8.7-10.2-11.8-13 in). Purl 3 rows. Knit 1 row (= RS), inc evenly across the row the number of sts to be 97-103-111-119 sts, purl 1 row. Place markers each side, 51-53-57-61 sts for back, and 23-25-27-29 sts for both fronts. Beg from RS and work as foll: K1 (= selvage st), patt as charted over 21 sts, Seed st over 1-3-5-7 sts = right front. Back: Seed st over 15-16-18-20 sts, patt over 21 sts, Seed st over 15-16-18-20 sts. Work left front same as right front, but in reverse. When work measures approx. 26-30-34-37 cm (10.2-11.8-11.4-14.6 in), divide work and finish back and fronts separately.

Back

Cont working back and forth in patt until work measures approx. 40-45-50-54 cm (15.7-17.7-19.7-21.3 in), and armhole measures approx. 14-15-16-17 cm (5.5-5.9-6.3-6.7 in). Bind off.

Right front

Work back and forth in patt. When work measures approx. 36-40-45-48 cm (14.2-15.7-17.7-18.9 in) (or 4-5-5-6 cm (1.6-2-2-2.4 in) less than total length), bind off at neck edge every 2nd row 1x5-5-6-7, 1x3, 1x2, and 1x1 st. Cont working back and forth over rem sts until work measures same as back.

Work same for left front, rev all shaping.

Sleeves

Using needles size 6 mm, cast on 21-21-23-25 sts. Work in Seed st same as for body. Change to needles size 7 mm. Knit 1 rnd, inc evenly across the rnd the number of sts to be 27-27-29-29 sts. Cont working in rnds in St st. Place a marker mid under arm. Inc 1 st both sides of the marker. Rep inc approx. every 8-7-7-6 cm (3.1-2.8-2.8-2.4 in) altog. 33-35-39-41 sts. When work measures approx. 20-22-25-28 cm (7.9-8.7-9.8-11 in), purl 3 rnds. Knit 1 rnd, inc evenly across the rnd 8-8-10-10 sts (these sts are not included in the number of sts inc mid under arm). Cont working in rnds in patt as charted (check from mid st where to beg patt). When sleeve measures approx. 31-34-38-42 cm (12.2-13.4-15-16.5 in), bind off.

Finishing

Sew shoulder seams.

Front bands: Using needles size 6 mm, pick or knit up along right front edge approx. 43-49-53-57 sts. Work back and forth 2 cm (0.8 in) in Seed st. Bind off. Place markers for altog. 5-5-6-6 buttons evenly spaced apart.

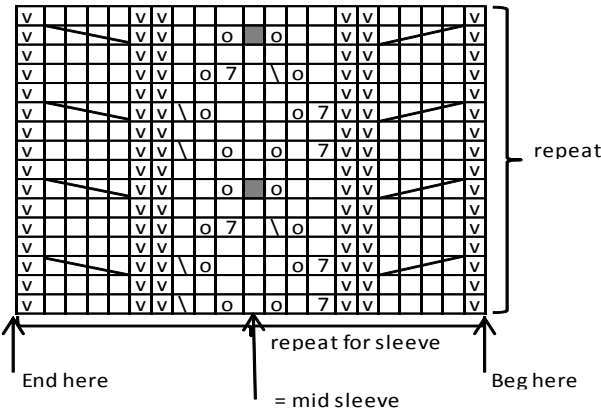
Work same for left front band, but make buttonholes on 2nd row. Buttonhole: K2tog, 1 yo.

Neck band: Using needles size 6 mm, pick or knit approx. 41-43-43-45 sts along next edge (also over front edge bands). Work back and forth 3 cm (1.2 in) in Seed st. Bind off.

Weave in all ends on WS.

Sew on sleeves and buttons.

PATTERN OVER 21 STS



- = K on RS, P on WS
- = P on RS, K on WS
- = K2togtbl
- = K2tog
- = 1 yo
- = slip 1 st, K2tog, pssso
- = slip 2 sts on cn, and hold to back, K2, K sts from cn
- = slip 2 sts on cn, and hold to front, K2, K sts from cn

Viking Balder
Cardigan 1201-5

Size	2/4	6	8	10	12	14 yrs
Chest, approx.	70	74	78	82	86	90 cm
	27.6	29.1	30.7	32.5	33.9	35.4 in
Sleeves, approx.	15	17	19	21	22	24 cm
	5.9	6.7	7.5	8.3	8.7	9.4 in
Length, approx.	53	58	63	68	73	76 cm
	20.9	22.8	24.8	26.8	28.7	29.9 in

ALTERNATIVE YARN: Viking Balder (100 wool, superwash), 100 g skein, Viking Alpaca Superfine (100% alpaca), Viking Naturgarn (100% wool), 50 g ball

Beige, 407 6 6 7 7 8 9 skeins

Circular needle size 7 mm – US 10½ - UK/Canadian 2 +2 toggles, approx. 2,2 m (86.7 in) brown fur band

Gauge: 12 sts = approx. 10 cm (4 in) over St st using needles size 7 mm. Check your gauge to ensure success.

CARDIGAN

Worked from side to side in three pieces, 2 fronts and 1 back.

Back

Beg from sleeve. Using needles size 7 mm, cast on 22-23-24-25-26-27 sts. Work back and forth in Garter st. When work measures 15-17-19-21-22-24 cm (5.9-6.7-7.5-8.3-9.4

in), cast on (end of the row) 42-47-52-56-61-64 sts for back. Cont working in Garter st over all sts. When work measures 35-37-39-41-43-45 cm (13.8-14.6-15.4-16.1-16.0-17.7 in), measured from the cast-on sts (= back), bind off (beg of row) 42-47-52-56-61-64 sts, same side as the cast-on sts = 22-23-24-25-26-27 sts. When sleeve measures the same as the other sleeve, bind off rather loosely.

Front

Cast on and work same as for back. When work measures 18-19-20-21-22-23 cm (7.1-7.5-7.9-8.3-8.7-9.1 in), measured from the cast-on sts (= sleeve + 1 front), bind off rather loosely.

Work same for the other sleeve and front.

Finishing:

Sew sleeve and shoulder seams, leaving approx. 8-8-9-9-10-10 cm (3.1-3.1-3.5-3.5-4-4 in) for neck edge.

Weave in all ends on WS.

Sew fur band along fronts and sleeves (see photo).

Place markers for buttons on left front, and crochet buttonhole loops on right front: Insert hook from WS through to RS, draw yarn on WS insert hook again from WS through to RS, draw the loop from WS to RS, and fasten with 1 sl st. Ch20, break the yarn, draw through the loop, and form a loop from ch-sts, secure with few sts, and weave in the end on WS.

Sew on toggles.

Tie approx. 6-7-8-9-10-10 cm (2.4-2.8-3.1-3.5-2-2 in) long fringes to the lower edge of the cardigan (make sure that the knot is on RS).

back and forth as foll: Garter st over 3 sts, patt as charted = 25 sts, Garter st over 3 sts. When work measures approx. 145-160-175 cm (57.4-63.3-69.2 in), or 5 cm (2 in) less than desired length, change to white yarn and purl 1 row (= WS). Work 5 cm (2 in) in K1,P1rib. Bind off in rib.

Using double white yarn, tie approx. 10 cm (4 in) long fringes approx. 1½cm (in) apart to each end. Make sure the knots fall on RS of the scarf.

HAT

Using short circular needle size 7 mm and white yarn, cast on 50-56-58 sts. Work in rnds approx. 4-5-5cm (3.4-2-2 in) in K1tbl,P1 rib. Change to grey yarn. Knit 1 rnd. Cont working as foll:
2/4 yrs: beg from the arrow on chart, work motif report 2 times.
6/8 yrs: *P1, patt I, P1, patt II, P1, patt I*, patt *-* 1 more time.
10/12 yrs: *P2, patt I, P1, patt II, P1, patt I*, rep *-* 1 more time.
When work measures 16-18-20 cm (in), measured from cast-on edge, dec evenly across the rnd the number of sts to be 50-55-55 sts. Cont in patt as long as it is possible, and then in St st, **dec** for crown: *K3, K2tog*, rep *-* across the rnd. Work 1 rnd without dec. Rep dec every 2nd rnd with 1 st less between dec until 20-22-22 sts rem. Next rnds: Knit all sts tog in pairs until 5-6-6 sts rem. Break yarn, thread through rem sts, pull tightly, and weave in on WS. Weave in all ends on WS.

WRISTWARMERS

Using needles size 7 mm and white yarn, cast on 22-24-26 sts. Divide sts on 4 dpn. Work in rnds in K1tbl,P1 rib. When work measures 4-5-5cm (3.4-2-2 in), change to grey yarn. Knit 1 rnd, inc evenly across the rnd the number of sts to be 38 sts (same for all sizes). Work *patt I and patt II as charted*, rep *-* 1 more time. When work measures 18-20-22 cm (7.1-7.9-8.7 in) (or 4-5-5 cm (3.4-2-2 in) less than desired length), change to white yarn. Knit 1 rnd, dec evenly across the rnd the number of sts to be 22-24-26 sts. Work 4-5-5 cm (3.4-2-2 in) in K1tbl,P1 rib. Bind off in rib (not too loosely).

Work same for the other wristwarmer.

Weave in all ends on WS.

Viking Balder

Scarf, hat and wristwarmers **1201-6**

Size:	2/4	6/8	10/12 yrs
Circumference, approx.	43	46	48 cm
	16.9	18.1	18.9 in
Length, scarf	150	165	180 cm
	59.1	65	70.9 in

ALTERNATIVE YARN: Viking Balder (100% wool, superwash), 100 g skein, Viking Alpaca Superfne (100 % alpaca), Viking Naturgarn (100% wool), 50 g ball

SCARF, HAT AND WRISTWARMERS

Grey 415	5	5	6 skeins
White, 402	1	1	1 skein

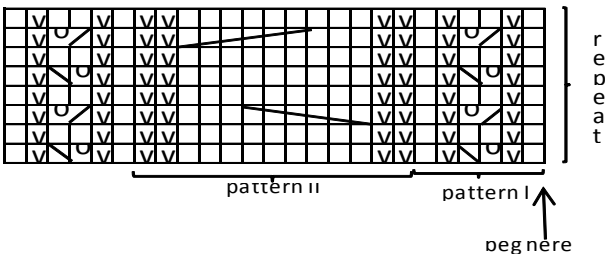
Double pointed needles and a short circular needle size 7 mm – US 10½ – UK/Canadian 2

Gauge: 12 sts = approx. 10 cm (4 in) over St st using needles size 7 mm. **Check your gauge to ensure success.**

SCARF

Using needles size 7 mm and white yarn, cast on 31 sts (same for all sizes). Work back and forth 5 cm (2 in) in K1,P1 rib. Change to grey yarn. Purl 1 row (= WS). Beg from RS, and cont working

Pattern over 25 sts



- = K on RS. P on WS
- ▣ = P on RS. K on WS
- ▤ = K2togtbl
- ▥ = K2tog
- ▧ = Sl 3 sts on cn. and hold to front. K3. K sts from cn
- ▨ = Sl 3 sts on cn. and hold to back. K3. K sts from cn
- ⌚ = 1 vo

Viking Balder

Tunic

1201-7

Size:	4	6	8	10 yrs
Chest:	65	70	75	80 cm
	25.6	27.6	29.5	31.5 in
Length:	55	60	65	70 cm
	21.7	23.6	25.6	27.6 in
Sleeve length:	31	34	38	42 cm
	12.2	13.4	15	16.5 in

ALTERNATIVE YARN: Viking Balder (100% wool, superwash), 100 g skein, Viking Naturgarn (100% wool), Viking Alpaca Superfine (100% alpaca), 50 g ball

Pink, 464	3	3	4	4 skeins
Multiclr, Pink, 465	4	4	4	5 skeins

Double pointed needles and circular needle size 6 and 7 – US 10 and 10½ – UK/Canadian 4 and 2

Gauge, Viking Balder: 12 sts = approx. 10 cm (4 in) over St st using needles size 7 mm. **Check your gauge to ensure success.**

Seed st:

1st row: *K1, P1*

2nd row: Knit all p-sts, purl all k-sts.

Rep 2nd row.

TUNIC

Using needles size 7 mm and multiclr yarn, cast on 115-119-127-131 sts. Work in rnds 3 cm (1.2 in) in Seed st. Next rnd: Dec 1 st = 114-118-126-130 sts. Place a marker each side, 57-59-63-65 sts both front and back. Work in rnds in St st and patt as foll: Beg from sidemarker, St st over 17-18-20-21 sts, patt over 23 sts, St st over 17-18-20-21 sts (= front), work back in St st. Dec 1 st both sides of each sidemarker, before the marker: K2togtbl; after the marker: K2tog. Rep dec every 5th-6th-6th-8th rnd until 78-82-90-94 sts rem. When work measures approx. 42-46-50-54 cm (16.5-18.1-19.7-21.3 in), bind off at each side 6 sts (3 sts both sides of the markers). Finish back and front separately.

Back

Cont working back and forth in St st. Bind off at each edge every 2nd row 1x2, and 1x1 st. When work measures 55-60-65-70 cm (21.7-23.6-25.6-27.6 in), and armhole measures approx. 13-14-15-16 cm (5.1-5.5-5.9-6.3 in), bind off, or slip sts on holder.

Front

Cont working back and forth in St st and patt, and bind off at armhole edge same as for back. When work measures approx. 51-56-60-65 cm (20.1-22-23.6-25.6 in), bind off 11-11-13-13 mid sts. Finish each side separately. Bind off at neck edge every 2nd row 2x2, and 1x1 st = 5-5-6-7 sts rem for shoulder. When work measures same as back, bind off. Work same for the other side, rev all shaping.

Finishing

Join shoulder seams.

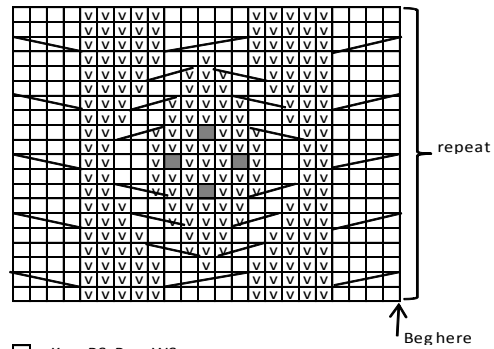
Armhole bands: Using needles size 6 mm and multiclr yarn, pick or knit up approx. 39-43-45-47 sts along armhole edge. Work in rnds 3 cm (1.2 in) in Seed st, but place a marker mid under arm, and dec 1 st both sides of the marker every 2nd rnd. Bind off.

Neck band: Using needles size 6 mm and pink yarn, pick or knit up approx. 41-45-45-49 sts along neck edge. Work in rnds approx. 3 cm (1.2 in) in Seed st. Bind off rather loosely. Weave in all ends on WS.

WRISTWARMERS

Using dpn size 7 mm and multiclr yarn, cast on 19-21-23-25 sts. Work in rnds approx. 10-12-14-15 cm (4-4.7-5.5-5.9 in) in Seed st. Bind off.

PATTERN OVER 23 STS



□ = K on RS, P on WS

▣ = P on RS, K on WS

■ = 1 bobble (= work same st 3 times: K1tbl, K1tbl, K1tbl = 3 sts)
Turn, P3, turn, K3, turn, P3, turn, sl 1 st, K2tog, pssso = 1 st

▤ = sl 1 st on cn, and hold to back, K2, purl 1 st from cn

▥ = sl 2 sts on cn, and hold to front, P1, knit sts from cn

▦ = sl 2 sts on cn, and hold to front, P1, knit sts from cn

▧ = sl 1 st on cn, and hold to back, K2, purl 1 st from cn

▨ = sl 2 sts on cn, and hold to front, K2, knit sts from cn

▩ = sl 2 sts on cn, and hold to back, K2, knit sts from cn

▪ = sl 3 sts on cn, and hold to front, K2, knit sts from cn

BAG

Using needles size 7 mm and multiclr yarn, cast on 31 sts. Work back and forth 3 cm (1.2 in) in Seed st. Cont working back and forth in St st and patt as foll: 1 selvage st (knit every row) St st over 4 sts, patt over 23 sts, St st over 4 sts, 1 selvage st. When work measures approx. 38 cm (15 in), work 3 cm (1.2 in) in Seed st. Bind off.

Fold bag in double and sew side seams.

Buttonhole band: Using needles size 7 mm and pink yarn, cast on 7 sts. Work approx. 7 cm (2.8 in) in Seed st. Make a buttonhole: K2, K2tog + 1 yo, K3. Dec 1 st beg of each row until 3 sts rem. Next row: Sl 1 st, K2tog, pssso. Break yarn, and draw through the loop. Sew buttonhole band mid back of the bag (where Seed st beg). Sew on a button on front.

Strap: Using needles size 6 mm and multiclr yarn, cast on 7 sts. Work back and forth in Seed st until work measures approx. 85-90-100-100 cm (33.5-35.4-39.4-39.4 in). Attach strap to each side of the bag.

Weave in all ends.

HAT

Using needles size 6 mm and multiclr yarn, cast on 51-55 sts. Work in rnds 4 cm (1.6 in) in Seed st. Eyelet rnd: *K2tog, 1 yo*, rep *-* across the rnd. Change to needles size 7 mm. Knit 1 rnd, inc evenly across the rnd the number of sts to be 65-69 sts. Cont working in rnds in Seed st until work measures approx. 17-19 cm (6.7-7.5 in). Beg crown dec (cont working in Seed st): *K2, K2tog*, rep *-* across the rnd. Work 2 rnds without dec. Rep dec with 1 st less between each dec = 32-34 sts. Knit 2 rnds. Next rnd: Knit all sts tog in pairs = 16-17 sts. Knit 1 rnd. Next rnd: Knit all sts tog in pairs until 8-8 sts rem. Break yarn, thread through rem sts, pull tightly, and weave in on WS:

Using pink yarn, twist a cord, and thread it into eyelet rnd.

Viking Balder

Poncho, hat and mittens 1201-8

Size:	4/6	8/12 yrs
Circumference:	43	47 cm
	16.9	18.5 in

ALTERNATIVE YARN: Viking Balder (100% wool, superwash), 100 g skein, Viking Naturgarn (100% wool), Viking Alpaca Superfine (100% alpaca), 50 g ball

Multiclr violet, 489	4	5 skeins
Heather, 468	2	2 skeins

Double pointed needles and circular needle size 6 and 7 mm – US 10 and 10½ - UK/Canadian 4 and 2

Gauge: 12 sts = approx. 10 cm (4 in) over St st using needles size 7 mm. **Check your gauge to ensure success.**

Seed Stitch:

1st row: *K1, P1*

2nd row: Knit all p-sts, purl all k-sts.

Rep 2nd row.

PONCHO

Using needles size 7 mm and multiclr yarn, cast on 120-136 sts. Work 6 rnds in Seed st. Cont working in rnds in St st until work measures approx. 15-18 cm (5.9-7.1 in). Beg dec: *K6, K2tog*, rep *-* across the rnd. Work 6 rnds without dec. Rep dec every 7th rnd with 1 st less between dec, until 45-51 sts rem on a rnd. Change to needles size 6 mm, and dec 1 st = 44-50 sts. Cont working in rnds in K1,P1 rib, until neck measures approx. 12-14 cm (4.7-5.5 in). Bind off in rib. Using heather clr yarn, make 10 pompons/tassels (diameter approx. 5 cm (2 in), and fasten along lower edge, approx. 10-11 cm (4-4.3 in) spaced apart.

HAT

Beg from right ear flap: Using needles size 7 mm and multiclr yarn, cast on 4 sts. Knit 1 row. Work back and forth in St st. Inc 1 st at each side every 2nd row, until you have 10-10 sts on a row. Cont working in St st until work measures approx. 6-8 cm (2.4-3.1 in). Put work aside, and work same for the other ear flap. Cont working in rnds in St st as foll: Work sts over one ear flap, cast on 23-25 sts (= mid front), work sts over the other ear flap, and cast on 9-11 sts (= mid back) = 52-56 sts on a rnd. Next 2 rnds: St st over ear flaps, and K1,P1 rib over cast-on sts for mid front and back.

Cont working in rnds in St st until work measures approx. 14-16 cm (5.5-6.3 in) (measured mid front). Place 4 markers across the rnd, 13-14 sts between each marker. Dec 1 st both sides of each marker: before the marker: K2togtbl; after the marker: K2tog. Rep dec every 2nd rnd until 12-8 sts rem on a rnd. Break yarn, thread through rem sts, pull tightly, and weave in on WS. Using heather clr yarn, sew buttonhole sts

around the lower edge. Make a pompon/tassel using heather clr yarn, and fasten it on top.

MITTENS

Using needles size 6 mm and heather clr yarn, cast on 20-24 sts. Work in rnds 6-8 cm (2.4-3.1 in) in K1,P1 rib. Change to needles size 7 mm and multiclr yarn. Cont working in St st until work measures approx. 10-12 cm (4-4.7 in). Place markers each side, and leave an opening for thumb: Work until 1 st rem before a marker, slip next 3 sts on holder, cast on 3 sts, and cont working in rnds until work measures approx. 16-18 cm (6.3-7.1 in). Beg dec: Dec 1 st (= K2tog) beg of each needle. Rep dec every 2nd rnd 2 times, and then every rnd until 4-4 sts rem. Break yarn, thread through rem sts, and weave in on WS.

Thumb: Slip 3 sts from holder on needles size 7 mm, and pick up 4 sts from the other edge of the thumb opening + 1 st each side = 9 sts. Work 9-11 rnds (or desired length) in St st. Next rnd: Knit all sts tog in pairs. Break yarn, thread through rem sts, and weave in on WS.

Viking Balder- Viking Embla Tunic 1201-9

Size:	4	6	8	10 yrs
Chest:	65	70	75	80 cm
	25.6	27.6	29.5	31.5 in
Length:	55	60	65	70 cm
	21.7	23.6	25.6	27.6 in
Sleeve length:	31	34	38	42 cm
	12.2	13.4	15	16.5 in

ALTERNATIVE YARN: Viking Balder (100% wool, superwash), 100 g skein, Viking Naturgarn (100% wool), Viking Alpaca Superfine (100% alpaca), 50 g ball

Viking Balder

Violet, 467 5 6 6 7 skeins

Viking Embla

Grey, 715 1 1 1 1 skein

Double pointed needles and circular needle size 6 and 7 mm – US 10 and 10½ – UK/Canadian 4 and 2

Gauge, Viking Balder: 12 sts = approx. 10 cm (4 in) over St st using needles size 7 mm. **Check your gauge to ensure success.**

TUNIC

Using needles size 7 mm and grey Viking Embla, cast on 38-40-42-44 sts. Work back and forth (see sketch) until work measures approx. 6-6-7-7 cm (2.4-2.4-2.8-2.8 in). Change to Viking Balder, and knit each st 3 times (= K1tfl, K1tbl and K1tfl) = 114-120-126-132 sts. Cont working in rnd in St st. Place markers each side, 57-60-63-66 sts for both back and front. Dec 1 st both sides of the markers, before the marker: K2togtbl; after a marker: K2tog. Rep dec every 4th-5th-6th-6th rnd until 78-84-90-96 sts rem. When work measures 37-41-44-48 cm (14.6-16.1-17.3-18.9 in), adjust evenly across the last rnd the number of sts to be. 76-84-92-100 sts. Place new sidemarkers, 38-42-46-50 sts for both back and front. Beg

from sidemarker, and work in rnds in K2,P2 rib (Note! Beg and end alike both sides of the markers). When work measures approx. 42-46-50-54 cm (16.5-18.1-19.7-21.3 in), bind off 6 sts at each side (3 sts both sides of the markers). Finish back and front separately.

Back

Cont working back and forth in rib. Bind off at each edge every 2nd row 1x2, 1x1 st. When work measures 55-60-65-70 cm (21.7-23.6-25.6-27.6 in), and armhole measures approx. 13-14-15-16 cm (5.1-5.5-5.9-6.3 in), bind off or slip sts on holder.

Front

Cont working back and forth in rib, and bind off at armhole edge same as for back. When work measures approx. 51-56-60-65 cm (20.1-22-23.6-25.6 in), bind off 6-10-10-10 mid sts. Finish each side separately. Bind off at neck edge every 2nd row 2x2, 1x1 st = 5-5-7-9 sts rem for shoulder. When work measures same as back, bind off or slip sts on holder. Work same for the other side, rev all shaping.

Sleeves

Using needles size 7 mm and grey Viking Embla, cast on 6-6-8-8 sts. Work back and forth until work measures approx. 5-5-6-6 cm (2-2-2.4-2.4 in). Change to Viking Balder, and knit each st 3 times (= K1tfl, K1tbl, K1tfl) = 18-18-24-24 sts on a rnd. Place a marker beg of rnd = mid under arm. Cont working in rnds in St st. Inc 1 st both sides of the marker approx. every 3½-3½-5-5 cm (1.4-1.4-2-2 in) until you have 32-34-36-38 sts on a rnd. **But** when work measures approx. 18-20-24-28 cm (7.1-7.9-9.4-11 in), cont working in K2,P2 rib. When work measures approx. 31-34-38-42 cm (12.2-13.4-15-16.5 in), or desired length, bind off 6 sts mid under arm (3 sts both sides of the marker). Cont working back and forth. Bind off at each edge every 2nd row 1x2, 1x1 st. Bind off rem sts. Work same for the other sleeve.

Finishing

Join shoulder seams.

Neck band: Using needles size 7 mm and Viking Balder, pick or knit up approx. 40-44-44-48 sts along neck edge. Work in rnds approx. 5-5-5-5 cm (2-2-2-2 in) in K2,P2 rib. Next rnd: M1 to each p-stripe, and cont working in K2,P3 rib until work measures approx. 8-8-8-8 cm (3.1-3.1-3.1-3.1 in). Next rnd: M1 to each k-stripe, and cont working in K3,P3 rib until work measures approx. 12-12-14-14 cm (4.7-4.7-5.5-5.5 in). Bind off in rib.

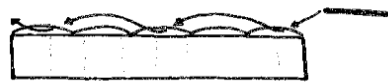
Weave in all ends on WS. Join shoulder seams, and sew on sleeves. Sew Viking Embla edges' seams. body and sleeves.

HAT (size 4/6 – 8/10 years)

Using needles size 6 mm and Viking Balder, cast on 52-56 sts. Work in rnds approx. 3 cm (1.2 in) in K2,P2 rib. Change to needles size 7 mm. Knit 1 rnd, inc evenly across the rnd the number of sts to be 60-66 sts. Cont working in rnds in St st until work measures approx. 18-20 cm (7.1-7.9 in). Dec for crown: *K4, K2tog*, rep *- * across the rnd. Work 2 rnds without dec. Rep dec every 3rd rnd with 1 st less between dec until 20-22 sts rem. Next rnd: Knit all sts tog in pairs = 10-11 sts. Break yarn, thread through rem sts, pull tightly, and weave in on WS. Make a 'rose' using Viking Embla, and fasten on side. Weave in all ends on WS.

SCARF

Using Viking Embla, knit a scarf (approx. 150 cm (59.1 in) long) with 3 sts (see sketch and text below).



Embla – explanation for the sketch.

Beg by winding the yarn into a ball.

Casting: Insert needle into first loop tbl, continue by picking up every 2nd loop on needle until you have the desired number of sts on the needle.

Cont as foll:

A: Knit a stitch from every 2nd loop across the row.

B: Turn, knit 1 st from first loop, rest from every 2nd loop.

C: Rep B until work measures the desired length.

Viking Balder/Pleddgarn

Necklet, hat, wrist- and legwarmers

1201-10

Size **one size child**

Necklet 1 height-width approx. **20x 35 cm**

7.9x13.8 in

Circumference, approx. **46 cm**

18.1in

ALTERNATIVE YARN: Viking Balder (100 % wool, superwash) 100 g skein, Viking Alpaca Superfine (100% alpaca), Viking Naturgarn (100% wool), 50 g ball Viking Pleddgarn (88% acrylic, 12% polyester), 350 g ball

BALDER

Petrol, 428 3 skeins

PLEDDGARN

Petrol/Black, 729 1 ball

Circular needle and double pointed needles size 7 mm – US 10½ - UK/Canadian 2

Gauge: 14 sts = approx. 10 cm (4 in) over pattern using needles size 7 mm.

16 sts = approx. 10 cm (4 in) over rib using double
Pleddgarn and needles size 7 mm.

Check your gauge to ensure success.

Seed stitch:

1st row: *K1, P1*

2nd row: Knit all p-sts, purl all k-sts.

Rep 2nd row.

NECKLET

Beg from upper edge. Using needles size 7 mm and petrol clr
yarn, cast on 96 sts. Work in rnds 3 cm (1.2 in) in Seed st.

Cont working in patt:

(Note: Worked in rnds inside is RS)

1st rnd: Purl.

2nd rnd: *M3 (= work into same st: K1, P1, K1), P3tog*, rep
- across the rnd.

3rd rnd: Purl.

4th rnd: *P3tog, M3*, rep *-* across the rnd.

Rep 1st-4th rnds until work measures approx. 15 cm (5.9 in),
measured from cast-on edge.

Work 3 cm 1.2 in) in Seed st.

Bind off rather loosely.

Weave in all ends on WS.

Turn work inside out.

HAT

Size:

Using needles size 7 mm and Balder, cast on 57 sts. Work in
rnds 3 cm (1.2 in) in Seed st. Cont working in patt (see
'Necklet'), but inc evenly across first rnd the number of sts to
be 68 sts. When work measures approx. 18 cm (7.1 in),
measured from cast-on edge, beg crown dec on 2nd patt rnd
(cont working in patt): *P2, P2tog*, rep *-* across the rnd.
Next dec rnd: *P1, P2tog*, rep *-* across the rnd. Last dec
rnd: P all sts tog in pairs = 17 sts. Rep last dec rnd until 9 sts
rem. Break yarn, thread through rem sts, and weave in on
WS.

Weave in all ends on WS.

WRIST- AND LEGWARMERS

Using needles size 7 mm and double Pleddgarn, cast on 24
sts for wristwarmers, and 28 sts for legwarmers. Divide sts
on 4 dpn, and work in rnds in K2,P2 rib. When work
measures approx. 20 cm (7.9 in) (wristwarmers), and 30 cm
(11.8 in) (legwarmers), or desired length, bind off in rib.

Work same for the other wristwarmer/legwarmer.

Weave in all ends on WS.

Viking Balder

Necklet

1201-11

Size	4-6	8-10 yrs
Width, neck	34	40 cm
	13.4	15.7 in

ALTERNATIVE YARN: Viking Balder (100 % wool,
superwash) 100 g skein, Viking Alpaca Superfine (100%
alpaca), Viking Naturgarn (100% wool), 50 g ball

White, 402

2

3 skeins

Circular needle 7 mm – US 10½ - UK/Canadian 2

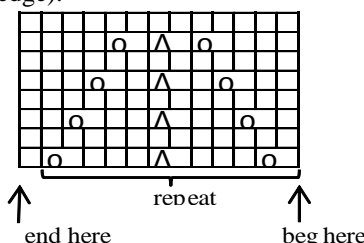
+ 8-9 buttons + approx. 1 m (39.7 in) lace

Gauge: 12 sts = approx. 10 cm (4 in) over St st using needles size
7 mm. **Check your gauge to ensure success.**

NECKLET

Using needles size 7 mm, cast on 109-133 sts. Knit 1 row (= WS).
Cont working back and forth as foll: Garter st over 6 sts, patt as
charted 8-10 times, Garter st over 6 sts. When work measures
approx. 2 cm (in), make a buttonhole: K2, bind off 2 sts (next row:
cast on 2 sts over the bound-off sts), K2, work in patt until 6 sts
rem, K6. Make a buttonhole approx. every 4 cm (1.6 in). When
patt report is ready, place a marker for each patt report across the
row = 8-10 markers altog. Work 6 rows in St st inside 6 sts at each
edge. Next row: Dec 1st both sides of each marker, before a
marker: K2togtbl; after a marker: K2tog = 16-20 sts dec on a row.
Rep dec approx. every 4 cm (1.6 in) until 45-53 sts rem = altog. 4
dec rows.

When work measures approx. 17-22 cm (6.7-8.7 in), measured
from the markers, knit 1 row (= RS), and inc 1 st = 46-54 sts. Work
approx. 6- 8 cm (2.4-3.1 in) in K2,P2 rib inside 6 sts at each edge.
Bind off rather loosely in rib. Weave in all ends on WS. Sew on
buttons. Sew on the lace to the lower edge of the necklet (= cast-on
edge).



- = K on RS. P on WS
- ◻ = 1 vo
- △ = sl 1 st, K2tog, pssso

Viking Balder

Long cardigan

1201-12

Size	4	6	8	10	12 yrs
Chest, approx.	63	67	70	73	77 cm
	24.8	26.4	27.6	28.7	30.3 in
Sleeve length, approx.	31	34	38	42	45 cm
	12.2	13.4	15	16.5	17.7 in
Length, approx.	50	58	62	70	78 cm
	19.7	22.8	24.4	27.6	30.7 in

ALTERNATIVE YARN: Viking Balder (100% wool, superwash), 100 g skein, Viking Alpaca Superfine (100% alpaca), Viking Naturgarn (100% wool), 50 g ball

White, 402 6 7 7 8 8 skeins

Double pointed needles size 7 mm – US 10½ – UK/Canadian 2
Crochet hook size 3 mm – US C/2 or D/3 – UK/Canadian 11
+ approx. 1 m (39.4 in) white fur band + 2 toggles

Gauge: 12 sts = approx. 10 cm (4 in) over St st using needles size 7 mm. 16 sts = approx. 10 cm (4 in) over patt using needles size 7 mm. **Check your gauge to ensure success.**

CARDIGAN

Using needles size 7 mm and white yarn, cast on 90-95-95-100-105 sts. Work back and forth 3 rows in St st. Knit 1 row (= WS) = folding edge. Work 4 rows in St st, adjusting across the last row the number of sts to be 119-119-135-135-135 sts. Cont working back and forth in patt I as charted inside 3 sts at each edge (= worked in Garter st). When work measures approx. 34-42-42-50-58 cm (13.4-16.5-16.5-19.7-22.8 in), measured from folding edge (end with a complete or half patt report), knit 1 row (= RS), and dec evenly across the row the number of sts to be 76-80-84-88-92 sts. Place markers each side, 38-40-42-44-46 sts for back, and 19-20-21-22-23 sts for each front. Work 3 rows in St st. Bind off 2 sts both sides of the sidemarkers = 4 sts for each armhole. Finish back and fronts separately.

Back

Cont working back and forth in St st. When work measures the given length, and armhole measures approx. 14-15-16-17-18 cm (5.5-5.9-6.3-6.7-7.1 in), bind off (or leave sts on holder).

Fronts

Work same as for back. When work measures 3-3-4-4-5 cm less than total length, bind off at neck edge every 2nd row 1x4-4-5-5-6, 1x2, and 1x1 st = 10-11-11-12-12 sts. When work measures same as back, bind off (or leave sts on holder). Work same for the other front, rev all shaping.

Sleeves

Using needles size 7 mm, cast on 18-20-22-24-26 sts. Work 3 rnds in St st, purl 1 rnd, and work 4 rnds in St st. Place a marker mid under arm. Cont working in St st. Inc 1 st both sides of the marker approx. every 3 ½ -4-4 ½ -5-4½ cm (1.4-1.6-1.8-2-1.8 in) until you have 34-36-38-40-44 sts on a rnd. Bind off 4 sts mid under arm =

2 sts both sides of the marker. Work 2 rows in St st. Bind off rather loosely.

Work same for the other sleeve.

Finishing

Join shoulder seams.

Fold lower edge in double and sew on WS.

Sew on sleeves.

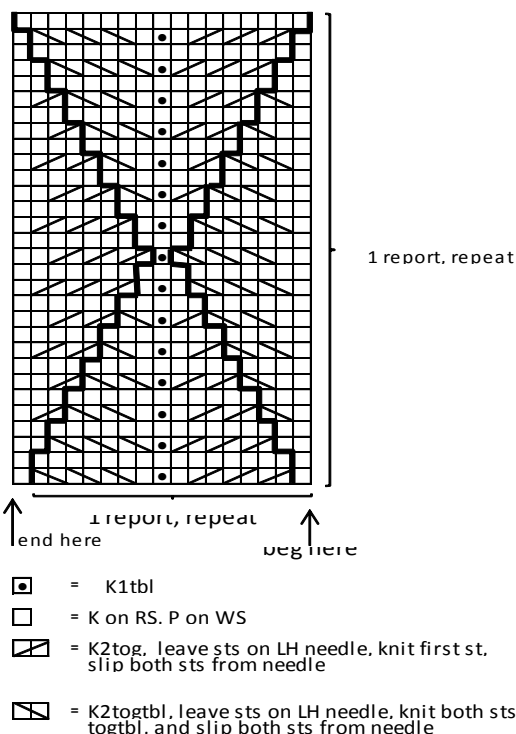
Neck band: Knit or pick up approx. 40-42-42-44-46 sts along neck edge (RS). Work back and forth 4 rows in Garter st. Bind off rather loosely.

Weave in all ends on WS.

Sew fur band along neck edge and sleeves.

Sew 3 snap fasteners on the upper parts front edges (right front edge on top).

Place markers on right front for the toggles. Crochet buttonhole loops on left front: Insert hook through the front from WS to RS, and again to WS for a lock. Insert hook from RS, and draw lock to RS and fasten with 1 sl st. Ch15. Break yarn, and draw through the lock. Fasten the yarn well, and weave in on WS. then again to RS. Sew on 2-2-3-3-3 toggles on right front.



Viking Balder

Tunic, hat and dog's sweater 1201-13

Size	4/6	8/10	12/14 yrs
Chest, approx.	63	70	76 cm
	24.5	27.6	29.9 in
Length, approx.	53	62	73 cm
	20.9	24.4	28.7 in
Circumference, approx.	43	47	50 cm
	16.9	18.5	19.7 in

ALTERNATIVE YARN: Viking Balder (100% wool, superwash), 100 g skein, Viking Alpaca Superfine (100% alpaca), Viking Naturgarn (100% wool), 50 g ball

TUNIC

Multiclr Violet, 410 3 4 5 skeins
Violet, 467 1 1 1 skein

HAT

Violet, 467 1 2 2 skeins

DOG'S SWEATER

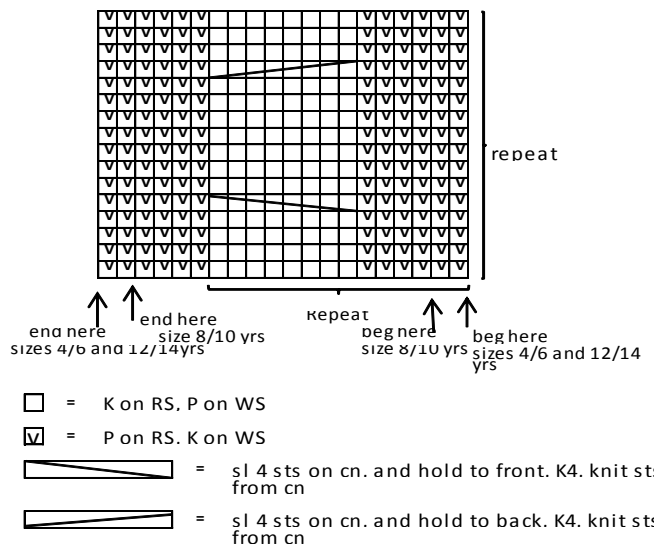
Multiclr Violet, 410 2 skeins
Violet, 467 1 skein

Double pointed needles and circular needle size 7 mm – US 10½ – UK/Canadian 4

Gauge: 14 sts = approx. 10 cm (4 in) over patt using needles size 7 mm. 12 sts = approx. 10 cm (4 in) over St st using needles size 7 mm. **Check your gauge to ensure success.**

TUNIC

Using needles size 7 mm and violet yarn, cast on 104-112-124 sts. Work 3 rnds in St st. Work 1 eyelet rnd: *K2tog, 1 yo*, rep *-* across the rnd = folding edge. Change to multiclr yarn. Knit 1 rnd. Place markers each side, 52-56-62 sts for both back and forth. Work in patt as charted. Beg and end as charted between sidemarkers. Note: Size 4/6 yrs: P2 before and after the sidemarkers. Note: Size 4/6 yrs: P2 before and after the sidemarkers, and size 12/14 yrs: P1 before and after sidemarkers (= before and after beg and end of patt.



When work measures approx. 34-40-48 cm (13.4-15.7-18.9 in), measured from folding edge/eyelet rnd (ending mid between cable twists), dec evenly across the rnd the number of sts to be 76-84-92 sts. Place new markers, 38-42-46 sts for both back and forth. Cont working in K2,P2 rib. When work measures 37-44-53 cm (14.6-17.3-20.9 in), bind off 2 sts both sides of the markers for armholes = 4 sts each side. Finish back and front separately.

Back

Cont working back and forth in rib. Bind off at each edge every 2nd row 1x2, 2x1 st. When work measures the given length, and armhole measures 16-18-20 cm (6.3-7.1-7.9 in), bind off, or leave sts on holder.

Right front

Place a marker mid front = 17-19-21sts for both sides. Divide work, and finish each side separately. Beg with right front. Work back and forth in rib, and bind off for armhole same as for back. Bind off same time for V-neck as foll: K1, K2togtbl every 2nd RS row until 5-6-7 sts rem. When armhole measures same as back, bind off, or leave sts on holder.

Work same for **left front**, rev all shaping.

Armhole bands

Knit or pick up 44-48-52 sts around armholes (RS). Work 5 rnds in K2,P2 rib. Bind off rather loosely in rib. Work same for the other armhole band.

Weave in all ends on WS.

Neck band: Beg mid front V-neck, knit or pick up 62-66-70 sts using violet yarn. Work back and forth in K2,P2 rib. bind off rather loosely in rib.

Sew ends of the neck band on top of each other (see photo).

Weave in all ends on WS.

Pockets: Using needles size 7 mm and violet yarn, cast on 14-14-18 sts. Work back and forth in K2,P2 rib. When work measures 12-16-16 cm (4.7-6.3-6.3 in), bind off rather loosely in rib.

Work same for the other pocket.

Weave in all ends on WS.

Finishing

Fold lower edge in double, and sew on WS.

Join shoulder seams.

Sew pocket on front, approx. 4-5-6 cm (1.6-2-2.4 in) from the lower edge

HAT

Using needles size 7 mm and violet yarn, cast on 52-56-60 sts.

Work in rnds 4-5-6 cm (1.6-2-2.4 in) in K2,P2 rib. Knit 1 rnd, inc evenly across the rnd the number of sts to be 60-60-70 sts. Place markers across the rnd, 10 sts between each marker. Cont working in St st. Inc 1 st before each marker every 3rd rnd 3 times = 78-78-90 sts. Work 7-9-11 rnds without inc.

Beg dec: K2tog before each marker. Rep dec every 3rd rnd 2 times, and then every rnd until 6-6-7sts rem. Break yarn, thread through rem sts, pull tightly, and weave in on WS.

Weave in all ends on WS.

DOG'S SWEATER

Size	S/M	L	XL
Neck, approx.	27	33	37 cm
	10.6	13	14.6 in
Chest, approx.	40	50	60 cm
	15.7	19.7	23.6 in
Length, back, approx.	27	32	36 cm
	10.6	12.6	14.2 in
Weight of the dog	4	6	10kg

TAKE MEASURES OF YOUR DOG:

Note! Measure of chest is most important when choosing size.



Beg from neck.

Using needles size 7 mm and multiclr yarn, cast on 32-40-44 sts. Work in rnds 7-10-12 cm (2.8-4-4.7 in) (or desired length) in K2,P2 rib. Knit 1 rnd, inc evenly across the rnd the number of sts to be 56-70-84 sts. Cont working in rnds in patt as charted (beg same as for sizes 4/6 and 12/14 yrs). When work measures 16-22-26 cm (6.3-8.7-10.2 in), measured from cast-on edge, slip 15-20-25 sts on holder, work with rem 39-48-57 sts = back, **but bind off same time** 1 st beg of end of the row. Cont working back and forth in patt. When work measures 8-10-12 cm (3.1-4-2.4 in) (= "opening for leg"), measured from where the sts were divided, slip sts on holder. Slip 15-20-25 sts from another holder on needles size 7 mm. Work back and forth in patt until work measures same as back. Cast on 1 st over each "leg opening" (Ktbl on next row) = 56-70-84 sts. When work measures approx. 34-42-48 cm (13.4-16.5-18.9 in), measured from cast-on edge (= back + rib), bind off 17-22-27 mid sts (= mid under belly). Cont working back and forth with rem sts. Bind off 2 sts beg of each row until 20 sts rem (same for all sizes). Bind off 4 sts beg of each row, until all sts are bound-off.

Band around bound-off edge

Beg from RS, pick or knit up along the edges approx. 60-64-72 sts (multiple by 4) using violet yarn. Work 4 rnds in K2,P2 rib. Bind off rather loosely in rib.

Edges around "leg openings": Beg from RS, pick or knit up around "leg opening" approx. 28-28-32 sts (multiple by 4) using multiclr yarn. Work 3 rnds in K2,P2 rib. Change to violet yarn, and work an eyelet rnd: *K2tog, 1 yo, P2tog, 1 yo*, rep *-* across the rnd = folding edge. Work 4 rnds in rib. Bind off rather loosely.

Fold edge in double, and sew on WS.

Work same kind of edge for each "leg opening".

Weave in all ends on WS.

Pocket for pouch

Using needles size 7 mm and violet yarn, cast on 10 sts. Work back and forth 8 cm (3.1 in) in K2tbl,P2 rib. Bind off.

Viking Balder

Hoodie 1201-14

Size	4	6	8	10	12 yrs
Chest	70	73	77	83	87 cm
	27.6	28.7	30.3	32.7	34.3 in
Length	40	45	50	54	58 cm
	15.7	17.7	19.7	21.3	22.8 in
Sleeve length	31	34	38	42	45 cm
	12.2	13.4	15	16.5	17.7 in

ALTERNATIVE YARN: Viking Balder (100% wool, superwash), 100 g skein, Viking Alpaca Superfine (100% alpaca), Viking Naturgarn (100% wool), 50 g ball

Multigrey, 412	2	2	2	2	3 skeins
Beige, 407	2	2	3	3	4 skeins
Black, 403	2	2	2	2	3 skeins

Circular needle and double pointed needles size 7 mm – US 10½ - UK/Canadian 2

Gauge: 12 sts = approx. 10 cm (4 in) over St st using needles size 7 mm. **Check your gauge to ensure success.**

Note: Choose RS or WS, see photos!

SWEATER

Note: Sweater with RS inside: Change clr on RS.

Using circular needle size 7 mm and beige yarn, cast on 84-88-92-100-104 sts. Work in rnds 4-4-5-5-5 cm (1.6-1.6-2-2-2 in) in K2,P2 rib. Knit 1 rnd. Place markers each side, 42-44-46-50-52 sts for both front and back. Change to black yarn, and cont working in St st with stripes: *4 rnds in black, 4 rnds in multigrey, 2 rnds in beige, 2 rnds in black, 2 rnds in multigrey, 4 rnds in beige*, rep *-* until work measures 23-27-31-34-37 cm (9.1-10.6-12.2-13.4-14.6 in). Bind off 6 sts each side (= 3 sts both sides of the markers). Finish back and front separately.

Back

Cont working back and forth in St st with stripes. When work measures approx. 17-18-19-20-21 cm (6.7-7.1-7.5-7.9-8.3 in), bind off sts rather loosely (or slip sts on holder).

Front

Work same as for back. When work measures 37-42-47-50-54 cm (14.6-16.5-18.5-19.7-21.3 in), bind off 8-8-10-10-12 mid sts for neck edge. Finish each side separately. Bind off at neck edge every 2nd row 1x2, 1x1 st (same for all sizes) = 11-12-12-14-14 sts. When work measures same as back, bind off (or slip st on holder). Work same for the other side, rev all shaping.

Finishing

Sew or join shoulder seams. Turn work inside out.

Sleeves

Using dpn size 7 mm and beige yarn, cast on 18-20-22-22-24 sts. Work rib same as for body. Place a marker beg of rnd = mid under arm. Knit 1 rnd, inc evenly across the rnd the number of sts to be 24-26-26-28-30 sts. Cont working in St st with stripes (same as for body). Inc 1 st both sides of the marker approx. every 3-3-3-3 ½-4 cm (1.2-1.2-1.2-1.4-1.6 in), until you have 42-44-46-48-50 sts on a rnd. When work measures the given length (or as desired), bind off 6 sts under arm. Work back and forth 2 rows in St st. Bind off rather loosely.

Work same for the other sleeve.

Turn sleeves inside out.

Sew on sleeves.

Neck band: Using needles size 7 mm and beige yarn, pick or knit up along neck edge 48-48-48-52-52 sts. Work in rnds 8-8-10-10-10 cm (3.1-3.1-4-4-4 in) in K2,P2 rib. Bind off. Fold neck band in double, and sew on WS.

Hood: Using needles size 7 mm and beige yarn, cast on 58-58-62-62-62 sts. Work back and forth 8-8-10-10-10 cm (3.1-3.1-4-4-4 in) in K2,P2 rib. Cont working in St st with beige yarn. When work measures 17-18-19-20-21 cm (6.7-7.1-7.5-7.9-8.3 in), measured from cast-on edge, bind off at each edge every 2nd row 1x3, 1x2, and 1x1 st (= bind off altog. 6 times).

Bind off rem sts rather loosely.

Hood worked with RS inside:

Fold rib in double and sew on WS (St st). Sew mid back seam (= bound-off edge) (Note! WS is folded outwards) Sew hood inside neckband, beg mid back. Sew towards mid front, but don't sew the ends of ribbed edge.

Hood worked with WS inside:

Fold rib in double, and sew on WS. Sew mid back seam (= bound-off edge). Sew hood inside neckband, beg mid back. Sew towards mid front, but don't sew the ends of ribbed edge.

Twist a cord, and thread into front folder.

Weave in all ends on WS.

Viking Balder

Cardigan, hat and scarf **1201-15**

Size	2	4/6	8	10	12	14 yrs
Chest, approx.	66	73	78	83	88	93 cm
	26	28.7	30.7	32.7	34.6	36.6 in
Sleeve length, approx.	28	33	38	42	45	47 cm
	11	13	15	16.5	17.7	18.5 in
Length, approx.	36	43	50	54	58	62 cm
	14.2	16.9	19.7	21.3	22.8	24.4 in

ALTERNATIVE YARN: Viking Balder (100 wool, superwash), 100 g skein, Viking Alpaca Superfine (100% alpaca) , Viking Naturgarn (100% wool), 50 g ball

CARDIGAN

Navy Blue, 426 3 3 4 4 5 5 skeins
Blue, 423 2 2 3 3 4 4 skeins

HAT, SCARF AND MITTENS

Navy Blue, 426 2 2 2 3 3 3 skeins
Blue, 423 1 2 2 2 2 3 skeins

Double pointed needles and circular needle size 7 mm – US 10½ - UK/Canadian 2
+4-4-4-5-5-5 buttons

Gauge: 12 sts = approx. 10 cm (4 in) over St st using needles size 7 mm. **Check your gauge to ensure success.**

CARDIGAN

Using needles size 7 mm and navy blue yarn, cast on 78-86-94-98-106-110 sts. Work back and forth 3-4-5-5-5-5 cm (1.2-1.6-2-2-2-2 in) in K2,P2 rib. Knit 1 row (=RS). Place markers each side, 38-42-46-48-52-54 sts for back, and 20-22-24-25-27-28 sts for each front. Cont working in St stand stripes: *2 rows in navy blue, 2 rows in blue*, rep *-*. When work measures 21-27-33-36-39-42 cm (8.3-10.6-13-14.2-14.2-16.5 in), measured from cast-on edge, bind off 6 sts each side (= 3 sts both sides of the markers). Finish back and front separately.

Back

Cont working back and forth in stripes. Bind off at each edge every 2nd row 1x2, and 1x1 st (same for all sizes). When work measures 36-43-50-54-58-62 cm (14.2-16.9-19.7-21.3-22.8-24.4 in), and armhole measures 15-16-17-18-19-20 cm (5.9-6.3-6.7-7.1-7.5-7.9 in), bind off or slip sts on holder.

Right front

Work same as for back. Dec for V-neck at the same time: Dec 1 st every 2nd row 6-6-5-6-5-5 times, and then every 4th row 2-2-3-3-4-4 times = 7-7-8-9-10-12 sts rem. When work measures same as back, bind off or slip sts on holder. Work same for the other front, rev all shaping.

Sleeves

Using needles size 7 mm and navy blue yarn, cast on 20-20-24-24-24 sts. Work rib same as for body. Knit 1 rnd, adjusting evenly across the rnd the number of sts to be 20-20-20-26-26-28 sts. Place a marker mid under arm = beg of rnd. Cont working in stripes (same as body). Inc 1 st both sides of the marker approx. every 3-3-3-4-4-4 cm (1.2-1.2-1.2-2-2-2 in) until you have 36-38-40-44-46-48 sts on a rnd. When work measures the given length, or as desired, bind off 6 sts mid under arm = 3 sts both sides of the marker. Cont working back and forth, and bind off at each edge every 2nd row 1x2, and 1x1 st. Bind off rem sts rather loosely. Work same for the other sleeve.

Finishing

Weave in all ends on WS.

Join shoulder seams.

Right front band

Using needles size 7 mm and navy blue yarn, knit or pick up from RS along right front edge up mid back approx. 57-69-77-81-87-93 sts (multiple with 4 + 1). Work back and forth 4

cm (1.6 in) in rib: K1, *P2, K2*, rep *-* across the row.
Bind off rather loosely.

Left front band

Work same as for right front band, but in reverse (= *K2, P2*, rep *-* across the row, end with K1). Make buttonholes on 3rd row: Work 4 sts, *bind off 2 sts (next row: cast on 2 new sts over bound-off sts), work 4-5-6-5-6-7 sts*, rep *-* altog 4-4-4-5-5-5 times. When work measures same as right front band, bind off rather loosely.

Sew on sleeves.

Sew on buttons.

Weave in all ends on WS.

HAT

Size	2/4	6/8	10/14 yrs
Circumference:	43	46	48 cm
	16.9	18.1	18.9 in

Using needles size 7 mm and navy blue yarn, cast on 52-56-56 sts. Work 5 cm (2 in) in rnds in K2,P2 rib. Change to blue yarn. Cont working in rnds as foll: * 2 rnds in blue, 2 rnds in navy blue*, rep *-*. Size 10/14 yrs: Inc evenly across first rnd the number of sts to be 58 sts. When work measures 16-18-20 cm (6.3-7.1-7.9 in), measured from cast-on edge, adjust evenly across the rnd the number of sts to be 50-55-55 sts. Dec for crown: *K3, K2tog*, rep *-* across the rnd. Work 1 rnd without dec. Rep dec every 2nd rnd with 1 st less between dec until 20-22-22 sts rem. Next rnd: Knit all sts tog in pairs until 5-6-6 sts rem. Break yarn, thread through rem sts, pull tightly, and weave in on WS.

Weave in all ends on WS.

Make a tassel/pompon, diameter approx. 7-8-8 cm (2.8-3.1-3.1 in), and fasten on top.

SCARF

Using needles size 7 mm and navy blue yarn, cast on 20-22-24 sts. Work back and forth in Garter st, *2 rows in navy blue, 2 rows in blue*. Rep *-* until work measures 150-165-180 cm (59.1-65-70.9 in) (or desired length), ending with navy blue stripe. Bind off.

Using navy blue yarn, tie approx. 12 cm (4.7 in) long fringes to each end, approx. 1½ cm (0.6 in) spaced apart.

Viking Balder

Vest with hood

1201-16

Size	2	4/6	8	10	12 yrs
Chest, approx.	60	65	68	73	78 cm
	23.6	25.6	26.8	28.7	30.7 in
Length	36	43	50	54	58 cm
	14.2	16.9	19.7	21.3	22.8 in

ALTERNATIVE Yarn: Viking Balder (100 wool, superwash), 100 g skein, Viking Alpaca Superfine (100% alpaca), Viking Naturgarn (100% wool), 50 g ball

Multiclr Blue, 429	3	3	4	4	5 skeins
Blue, 425	1	1	1	1	1 skein

Double pointed needles and circular needle size 7 mm – US 10½ – UK/Canadian 2

+ 1 zipper

Gauge: 12 sts = approx. 10 cm (4 in) over St st using needles size 7 mm. **Check your gauge to ensure success.**

VEST

Using needles size 7 mm and blue yarn, cast on 72-76-80-84-88-92 sts. Work back and forth 3 cm (1.2 in) in K2,P2 rib inside 3 sts at each edge worked always in purl on RS, and knit on WS = edge sts. Knit 1 row (RS), adjusting evenly across the row the number of sts to be 72-78-82-88-94 sts. Place markers each side, 36-38-40-42-44 sts for back, and 18-20-21-23-25 sts for each front. Change to multiclr yarn. Cont working in St st + edge sts same as before. When work measures 22-28-34-37-40 cm (8.7-11-13.4-15.7 in), bind off 3 sts both sides of the markers = 6 sts for each armhole. Finish back and fronts separately.

Back

Cont working back and forth in St st with multiclr yarn. When work measures the given length, and armhole measures 14-15-16-17-18 cm (5.5-5.9-6.3-6.7 in), bind off, or leave sts on holder.

Right front

Work same as for back + edge sts. When work measures 33-40-46-50-54 cm (13.4-15.7-18.1-19.7-21.3 in), bind off at neck edge every 2nd row 3 edge sts + 1x4-5-5-6-7, 1x 2, and 1x1st = 5-6-7-8-9 st. When work measures same as back, bind off, or leave sts on holder.

Work same for left front, rev all shaping.

Finishing

Join shoulder seams.

Neck band: Using needles size 7 mm and blue yarn, knit or pick up around neck edge 42-42-46-46-50 sts. Work back and forth 3 cm (1.2 in) in K2,P2 rib. Bind off in rib.

Front edges: Using needles size 7 mm and blue yarn, pick up from right front edge (RS) 46-52-58-64-70 sts. Work back and forth 3 cm (1.2 in) in K2,P2 rib. Bind off on WS row knitwise.

Work same for left front edge.

Armhole bands: Using needles size 7 mm and blue yarn, knit or pick up 40-40-44-44-48 sts. Work in rnds 3 cm (1.2 in) in K2,P2 rib. Bind off in rib.

Work same for the other armhole band.

Hood

Using needles size 7 mm and blue yarn, cast on 54-54-58-58-62 sts. Work back and forth 3 cm (1.2 in) in K2,P2 rib. Knit 1 row, adjusting evenly across the row the number of sts to be 53-53-57-57-61 sts. Change to multiclr yarn. Cont working back and forth in St st. When work measures 17-18-19-20-21 cm (6.7-7.1-7.5-7.9-8.3 in), measured from cast-on edge, bind off at each edge every 2nd row 1x3, 1x2, and 1x1 st. Bind off rem sts rather loosely.

Fold hood in double, and sew bound-off edges tog.

Beg mid back, and sew hood along the inner neck edge (adjust mid back if needed).

Weave in all ends on WS. Sew zipper between front edges.

Viking Balder

Cardigan, tunic and dog's sweater 1201-17

Size	4/6	8/10	12/14 yrs
CARDIGAN			
Chest	67	73	83 cm
	26.4	28.7	32.7 in
Sleeve length	30	38	46 cm
	11.8	15	18.1 in
Length	50	60	70 cm
	19.7	23.6	27.6 in
TUNIC			
Chest	60	68	76 cm
	23.6	26.4	29.9 in
Length	56	63	72 cm
	22	24.8	28 in

ALTERNATIVE YARN: Viking Balder (100 wool, superwash), 100 g skein, Viking Alpaca Superfine (100% alpaca), Viking Naturgarn (100% wool), 50 g ball

Cardigan

Grey, 415	4	5	6 skeins
White, 400	2	2	2 skeins
Red, 450	1	1	1 skein

Tunic

White, 400	3	4	5 skeins
Grey, 415	1	1	1 skein
Red 450, rest yarn from cardigan			

Dog's sweater (see measurements below)

Grey, 415	2	2	3 skein
White, 400 ca	1	1	1 skein
Red, 450	1	1	1 skein

Double pointed needles and circular needle size 7 mm – US 10½ - UK/Canadian 2

Tunic: 2 big snap fasteners + 2 red buttons

Cardigan: 6-7-8 plastic snap fasteners (transparent)

Gauge: 12 sts = approx. 10 cm (4 in) over St st using needles size 7 mm. **Check your gauge to ensure success.**

Minicables: Minicables can be worked without a cn. Knit first the second st behind the first st without slipping the sts over on RH needle, knit first st, and then slip both sts on RH needle = minicable

CARDIGAN

Using needles size 7 mm and white yarn, cast on 82-90-102 sts. Work back and forth 4-5-5cm (in) in K2,P2 rib, **but** make a cable twist on every 2nd RS row over k-sts (= cable rib). Change to grey yarn. Knit 1 row, adjusting evenly across the row the number of sts to be 80-88-100 sts. Place markers each side, 40-44-52 sts for back, and 20-22-24 sts for both fronts. Cont working back and forth in St st until work measures 33-41-49 cm (13-16.1-19.3 in) (or desired

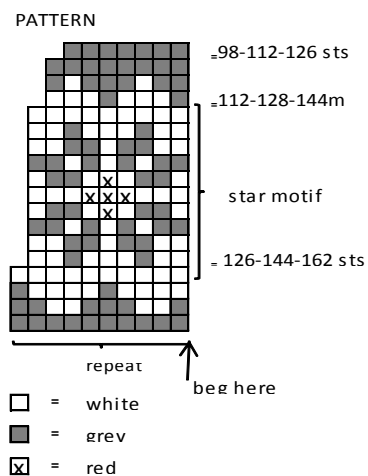
length before armholes). Bind off 3 sts both sides of the markers = 6 sts for each armhole. Put work aside, and knit the sleeves.

Sleeves

Using dpn size 7 mm and white yarn, cast on 20-24-28 sts. Divide sts on 4 needles. Work in rnds 4-5-5 cm (1.6-2-2in) in cable rib. Change to grey yarn. Place a marker mid under arm = beg of rnd. Cont working in St st. Inc 1 st both sides of the marker approx. every 2 ½-3-3 ½ cm (1-1.2-1.4 in) until you have 40-46-50 sts on a rnd. When work measures the given length, or as desired, bind off 3 sts both sides of the marker = 6 sts mid under arm. Work same for the other sleeve.

Yoke

Slip all sts on same circular needle, sleeves over the bound-off sts for armholes = 136-156-176 sts. Knit 1 rnd, adjusting evenly across the rnd the number of sts to be 140-160-180 sts. Beg from RS, and work in patt as charted.



Note: You can also embroider red sts afterwards in duplicate

Cont working with grey yarn. Dec evenly across the row 14-16-18 sts every 4th-4th 4th row = 42-48-54 sts. When work measures the given length, knit 1 row, adjusting evenly across the row the number of sts to be 38-42-46 sts. Change to white yarn, knit 1 row (= RS). Work 4-5-5 cm (1.6-2-2 in) in cable rib. Bind off in rib.

Finishing

Sew underarm seams.

Front bands

Beg with right front edge (RS), knit or pick up approx. 62-74-86 sts (multiple by 4 +2). Knit 1 row (= RS). Cont working back and forth 3 cm (1.2 in) in cable rib. Bind off rather loosely in rib. Work same for left front edge. Weave in all ends on WS. Sew on snap fasteners evenly spaced apart along front edge.

TUNIC

Using needles size 7 mm and grey yarn, cast on 112-124-136 sts. Work in rnds 4-5-5 cm (1.6-2-2 in) in cable rib. Change white yarn. Place markers each side, 56-62-68 sts for both back and front. Cont working in St st. Dec 1 st both sides of the markers (= 4 sts) every 3 ½-3 ½-4 cm (1.4-1.4-1.6 in) until 76-84-92 sts rem. When work measures 38-43-51 cm (15-16.9-20.1 in) (or desired length

before armholes), measured from cast-on edge, bind off 4-5-6 sts both sides of the markers = 8-10-12 sts for each armhole. Finish back and front separately.

Back

Cont working back and forth in St st. When work measures 3-4-5 cm (in) than the given measure, and armhole measures 14-15-16 cm (5.5-5.9-6.3 in), bind off 14-16-18 mid sts for neck edge = 8-8-8 sts rem for shoulders. Work each side separately: Change to grey yarn, knit 1 row (RS). Cont working in cable rib, beg with WS row: P1, K2, P2, K2, P1 (and vice versa on RS). When shoulder strap measures 9-11-14 cm (3.5-4.3-5.5 in), bind off 1 st beg of each row until 3 sts rem. Next row: Sl 1 st, K2tog, psso. Break yarn, and draw through last st, and weave in on WS. Work same for the other shoulder strap.

Front

Cont until work measures 10-11-12 cm (in) from armholes. Bind off 6-8-10 mid sts for neck edge. Work each side separately. Bind off at neck edge every 2nd row 1x2, and 2x1 st = 8-8-8 sts. When work measures same as back, bind off. Work same for the other side, rev all shaping.

Pockets

Using needles size 7 mm and grey yarn, cast on 15 sts. Work back and forth 4 rows in St st. Cont as foll: K3, star motif as charted, K3.st, Note: Use grey as basic clr and white for star. When star motif is ready, work 4 rows in St st with grey yarn, dec 1 st on last row = 14 sts. Work 4-5-5 cm (1.6-2-2 in) in cable rib. Bind off. Work same for the other pocket.

Crochet a picot edge around neck edge using white yarn, and around armholes: fasten yarn with 1 sl st, *ch3, 1 sc to first ch-st, skip 1 st, 1 sc to next st*, rep *-*, end with 1 sl st.

Weave in all ends on WS.

Dampen pockets slightly from WS, and sew on front (see photo).

Sew 1 snap fastener to the shoulder straps.

Sew buttons on RS of the shoulder straps.

DOG'S SWEATER

Size	S/M	L	XL
Neck, approx.	27	33	37 cm
	10.6	13	14.6 in
Chest, approx.	40	50	60 cm
	15.7	19.7	23.6 in
Back, approx.	27	32	36 cm
	10.6	13	14.2 in
Weight of the dog, approx.	4	6	10 kg

Note! Measure of the chest is most when choosing the size.



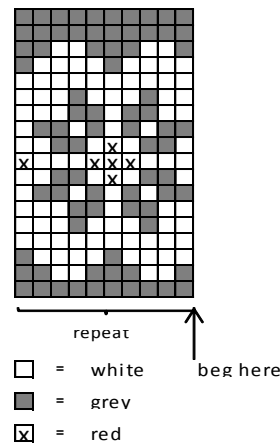
Beg from neck.

Using needles size 7 mm and white yarn, cast on 32-40-44 sts.

Work in rnds 7-10-12 cm (2.8-4-4.7 in) (or desired length) in cable rib. Change to grey yarn. Knit 1rnd, inc evenly across the rnd the

number of sts to be 50-60-70 sts. Work 2 rnds in St st with grey yarn. Cont working in patt as charted.

Pattern for dog's sweater



When patt is ready, cont working with grey yarn until work measures 16-22-26 cm (6.3-8.7-10.2 in), measured from cast-on edge. Bind off for leg openings as foll: Rnd begins from left leg; K1, bind off 1 st, slip 15-20-25 sts on holder, bind off 1st, work rem 33-38-43 sts over back. When "leg openings" measure 8-10-12 cm (in) from where the sts were divided, slip sts on holder. Slip 15-20-25 sts from the other holder on needles size 7 mm, and cont working back and forth until work measures same as back. Slip all sts on same needle, and cont working in rnds in St st, cast on 1 st over each "leg opening" (Ktbl on next rnd) = 50-60-70 sts. When work measures 34-42-48 cm (13.4-16.5-18.9 in), measured from cast-on edge (back + rib), bind off 18-22-28 mid sts under belly. Cont working back and forth in St st, and bind off 1st beg of each row 6-9-11 times = 20 sts rem (same for all sizes). Bind off 4 sts beg of each row, until all sts are bound-off. Weave in all ends.

Band around bound-off edge

Beg from RS. Using grey yarn knit or pick up approx. 60-80-92 sts (multiple by 4) along the edge. Work 6 rnds in cable rib. Bind off rather loosely in rib.

Edges around "leg openings"

Beg from RS. Using grey yarn, knit or pick up approx. 28-28-32 sts (multiple by 4) along the edge. Work 6 rnds in cable rib. Bind off rather loosely.

Pocket for pouch: Using needles size 7 mm and grey yarn, cast on 10 sts. Work back and forth 8 cm (3.1 in) in K2tbl, P2 (as in the photo), or cable rib. Bind off

Sew pocket along left shoulder (below rib for neck), pocket opening towards neck.

If you wish to make a smaller pocket, work as foll: Cast on 8 sts, K1, P2, K2, P2, K1 (and vice versa on WS), cont working in cable rib over 2 k-sts in the middle. When work measures approx. 7 cm (2.8 in), bind off.

Weave in all ends on WS.