

Viking Baby ull

Sweater, hat and socks

1101-1

Viking **BABY ULL** (100% superwash wool), 50 g ball

Alternative yarn: Viking **MILK FIBER** (100% milk fiber), 50 g ball

Size	6/9	12/18months	2	4/6	yrs
Chest	51	60	60	69	cm
	20.1	23.6	23.6	27.2	in
Length	26	32	36	42	cm
	10.2	12.6	14.2	16.5	in
Sleeve length	15	20	23	31	cm
	5.9	7.9	9.1	12.2	in
Leg length	18	23	28	33	cm
	7.1	9.1	11	13	in

Materials

Sweater

Marine Blue, 3 3 4 4 balls
326

Red, 350 1 1 1 1 ball

White, 300 1 1 1 1 ball

Trousers

Marine Blue, 2 2 3 3 balls
326

Red, 350 and White, 300 Use leftover yarns from the sweater

Socks and hat
Marine Blue, 1 2 2 2 balls
326

Red, 350 and White, 300 Use leftover yarns from the sweater

Double pointed needles and circular needle size 3 mm – US 2 or 3 - UK/Canadian 11.

Crochet hook 2½ mm –US B/1 or C/2 - UK/Canadian 12.

1 small button for sweater

Gauge: 28 sts = approx. 10 cm/4 in over St st using needles size 3 mm. Check your gauge to ensure success.

SWEATER

Using needles size 3 mm and marine blue yarn, cast on 144-168-168-192 sts. Work 3 cm (1.2 in) in K1,P1 rib. Cont working in rnds in St st. Place markers each side, 73-85-85-97 sts for front, and 71-83-83-95 sts for back. When work measures 13-18-21-25 cm (5.1-7.1-8.3-9.8 in), work in patt I as charted (check from mid st where to beg patt). Bind off 10 sts each side (5 both sides of the markers). Put work aside.

Sleeves

Using needles size 3 mm and marine blue yarn, cast on 42-44-46-48 sts. Work 3 cm (1.2 in) in K1,P1 rib. K 1 rnd, adjusting evenly across the rnd the number of sts to be 51-53-55-57 sts. Work in rnds in St st. Place a marker mid under arm. Inc 1 st both sides of the marker approx. every 1½-1½-1½-2 cm (0.6-0.6-0.6-0.8 in) (same for all sizes) until you have altog 67-73-77-83 sts on a rnd. When sleeve measures approx. 3 cm (1.2 in) less than the total length, work patt I as charted. Bind off 10 sts mid under arm (5 sts both sides of the marker). Put sleeve aside, and knit the other sleeve.

Yoke: Slip all sts on same circular needle = 238-274-282-318 sts. K 1 rnd, adjusting the number of sts evenly across the rnd to be 216-240-264-312 sts. Cont working in rnds in patt II as charted. Dec as charted = 72-80-88-104 sts rem. K 1 rnd, adjusting the number of sts evenly across the rnd to be 68-72-76-80 sts.

Neck border: Change to needles size 2½ mm. Beg mid back. Using red yarn, work back and forth in K1,P1 rib, until work

measures approx. 4 cm (1.6 in). Bind off in rib. Crochet 1 buttonhole loop to the border, and sew on the button. Sew underarm seams. Weave in all ends on WS.

HAT

Using needles size 2½ mm and marine blue yarn, cast on 96-108-120-130 sts. Work 8-8-10-10 cm (3.1-3.1-4-4 in) in K1,P1 rib. Change to needles size 3 mm. K 1 rnd, adjusting the number of sts evenly across the rnd to be 144-144-168-168 sts. Work patt I as charted, and cont after that with patt II. When work measures 13-14-14-15 cm (5.1-5.5-5.5-5.9 in) measured from ribbed edge, beg crown dec: K all sts tog in pairs = 72-72-84-84 sts. Work 2 rnds without dec. Rep dec every 3rd rnd until 18-18-21-21 sts rem. Break yarn, and thread through rem sts. Pull tightly, and weave in ends on WS.

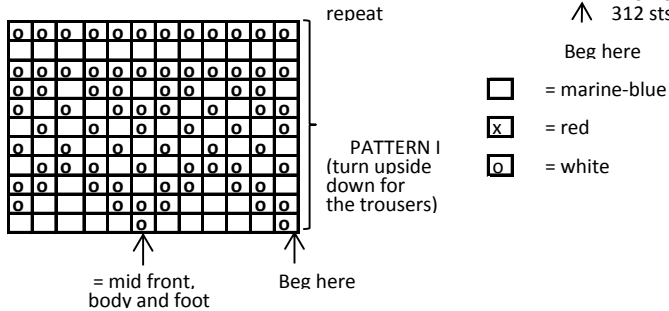
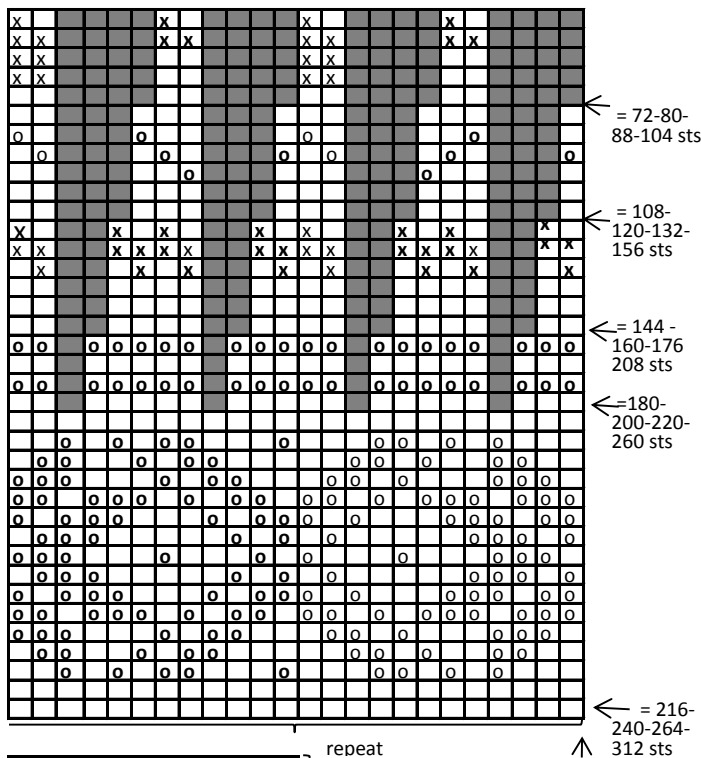
TROUSERS

Beg from one leg. Using needles size 2½ mm and red yarn, cast on 44-48-48-52 sts. Work 3 cm (1.2 in) in K1,P1 rib. Change to needles size 3 mm. K 1 rnd, adjusting evenly across the rnd the number of sts to be 58-62-64-66 sts. K 1 rnd using marine blue yarn. Cont working in rnds in patt I as charted (turn chart upside down). Check from mid st where to beg patt. Place a marker beg of rnd = inner seam of the leg. Inc 1 st each side of the marker approx. every 2½-2-3-2½ cm (1-0.8-1.2-2 in) until you have altog. 70-80-80-90 sts on a rnd. When work measures approx. 18-23-28-33 cm (7.1-9.1-11-13 in), or desired length, leave work aside and work same for the other leg. Slip all sts on same circular needle with inner seams facing each other. Place markers mid front and back. Cont working in rnds.

Dec 1 st each side of the markers every 2nd rnd altog. 4-4-4-5 times = 124-144-144-160 sts rem. When work measures approx. 16-18-22-25 cm (6.3-7.1-8.7-9.8 in), measured from the crotch, place markers each side, 62-72-72-80 sts for back and front. Place a marker mid back, and work short rows to rise the back of the trousers: Beg mid back. Work 5 sts, turn, work 10 sts, turn and work each time 5 sts more each time, until you have altog. 4-5-5-5 turnings at each side. K 1 rnd over all sts. Work 3 cm (1.2 in) in K1,P1 rib, P 1 rnd (= folding edge) + 3 cm (1.2 in) in rib. Fold rib in double, and sew on WS. Thread elastic through waist line border. Weave in all ends on WS.

SOCKS

Using needles size 2½ mm and red yarn, cast on 42-44-46-48 sts. Work 6-7-7-8 cm (2.4-2.8-2.8-3.1 in) in K1,P1 rib. Change to dpn size 3 mm, and cont working in St st. Heel: Work back and forth over mid back 21-22-23-24 sts: Work until 1 st rem, turn, work until 1 st rem at the other edge, turn. Cont working in the same way until 7-8-9-10 mid sts rem. Turn, and work 1 st more each row. To avoid holes, M1 between last mid st and next st, Ktogtbl these 2 sts. When all sts are returned back to work, cont working in rnds in St st over all sts. When foot measures 9-10-11-13 cm (3.5-4-4.3-5.1 in), or desired length, divide sts evenly on 4 dnp. Dec 1 st beg of each needle every 2nd rnd 4 times, and every rnd until 8 sts rem. Break yarn, and thread through rem sts. Pull tightly, and weave all ends on WS. Work same for the other sock.



Viking Baby Ull

Hat and mittens

1101-2

Viking BABY ULL (100% superwash wool), 50 g ball

Alternative yarn: Viking MILK FIBER (100% milk fiber), 50 g ball

Size	3/6	9/12	18/24	months
Circumference	33	37	40	cm
	13	14.6	15.7	in

Materials

Turquoise, 328 2 2 2 balls

White, 300 1 1 1 ball

Double pointed needles and circular needle size 2½ and 3- US 1 or 2 and 2 or 3 – UK 13 or 12 and 11.

Gauge: 28 sts = approx. 10 cm (4 in) over St st using needles size 3 mm. Check your gauge to ensure success.

HAT

Beg from edge. Using needles size 3 mm and white yarn, cast on 93-103-113 sts. Work 6 rows in Garter st. Change to turquoise clr yarn, and work in patt I as charted, (beg and end as charted). When the border measures approx. 4 cm (1.6 in), change to white yarn, and work 6 rows in Garter st. Turn, and cont working in St st (border will eventually be folded on RS). When work measures approx. 15-17-19 cm (5.9-6.7-7.5 in), bind off at each edge 33-38-43 sts. Cont working in St st over rem 27 sts until work measures approx. 11½-13½-15 cm (4.5-

5.3-5.9 in). Bind off. Sew the back seams. Fold the patt border on RS, and fasten from each side.

Pick or knit up approx. 80-88-96 sts along the lower edge (beg mid front). Work approx. 2 cm (0.8 in) in rnds in K3,P1 rib.

Next rnd: *K2tog, 1 yo*, rep *-* across the rnd = eyelet rnd.

Cont working in rib until work measures approx. 4 cm (1.6 in).

Work in patt and inc as charted = 180-198-216 sts. When patt is ready, change to white yarn. Work 6 rnds in Garter st. Bind off rather loosely.

Twist a cord using white yarn, and thread through eyelet rnd.

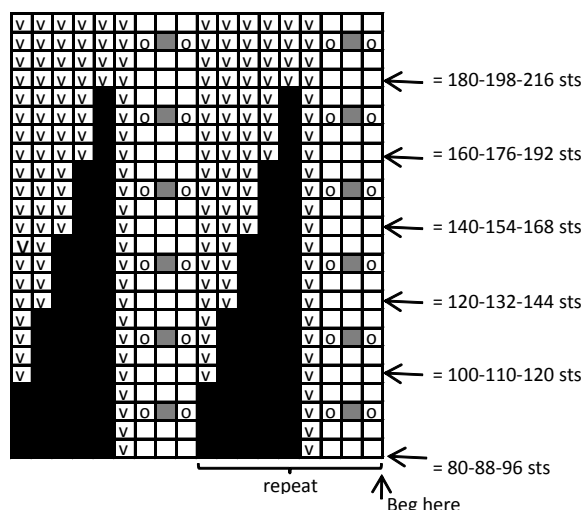
Weave in all ends on WS.

MITTENS (1 size)

Using needles size 3 mm and white yarn, cast on 45 sts. Work 6 rows in Garter st. Change to turquoise yarn, and work in rnds in patt as charted (for mittens). When work measures approx. 5 cm (2 in), work 2 rnds in St st, adjusting evenly across 1st rnd the number of sts to be 40 sts. Next rnd: *K2tog, 1 yo*, rep *-* across the rnd = eyelet rnd.

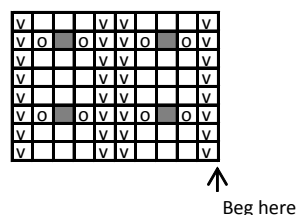
Cont working in rnds in St st until work measures approx. 11 cm (4.3 in). Beg dec: Place markers each side, 20 sts for each part. Work until 2 sts rem before the marker, K2tog, K2, K2togtbl, rep dec on the other side. Rep dec every 2nd rnd until 8 sts rem. Break yarn, and thread through rem sts. Pull tightly, and weave in ends on WS. Twist a cord using white yarn, and thread through eyelet rnd. Weave in all ends on WS.

PATTERN II



- = K on RS, P on WS
- V = P on RS, K on WS
- O = 1 vo
- = Sl1, K2tog, pss0

PATTERN I



Viking Baby Ull

Sweater, hat and socks 1101-3

Viking **BABY ULL** (100% superwash wool), 50 g ball

Alternative yarn: Viking **MILK FIBER** (100% milk fiber), 50 g ball

Size	1/3	6/9	12/18monts	2	4	yrs
Chest	47	51	56	60	65	cm
	18.5	20.1	22	23.6	25.6	in
Length	22	26	32	36	40	cm
	8.7	10.2	12.6	14.2	15.7	in
Sleeve length	16	19	23	28	31	cm
	63	7.5	9.1	11	12.2	in

Materials

Sweater

Light Violet, 369	2	3	3	4	4	balls
Pink, 361	1	1	1	1	1	ball
Turquoise, 328	1	1	1	1	1	ball
Yellow, 342	1	1	1	1	1	ball
Violet, 370	1	1	1	1	1	ball
Socks and hat						
Light Violet, 369	1	1	1	2	2	balls
Pink, 361			Use rest yarn from the sweater			
Turquoise, 328			Use rest yarn from the sweater			
Yellow, 342			Use rest yarn from the sweater			
Violet, 370			Use rest yarn from the sweater			

Double pointed needles and circular needle size 2½ and 3 mm – US 1or 2 and 2 or 3 - UK/Canadian 13 or 12 and 11.
Crochet hook size 2½ mm – US B/1 or C/2 - UK/Canadian 12 + 1 small button for the sweater

Gauge: 28 sts = approx. 10 cm/4 in over St st using needles size 3 mm. Check your gauge to ensure success.

SWEATER

Using needles size 3 mm and light violet yarn, cast on 132-144-156-168-180 sts. Work 2 rnds in K1,P1 rib. Change to violet yarn, and work 2 rnds in rib. Cont working in stripes as foll: 1 rnds in pink, 2 rnds in turquoise, 2 rnds in yellow. Change to light violet yarn, and cont working until rib measures approx. 3½ cm (1.4 in). Place markers each side, 67-73-79-85-91 sts for front, and 65-71-77-83-89 sts for back. Work in St st and in patt I as charted. Cont working in St st and light violet yarn until work measures 12-14-18-21-24 cm (4.7-5.5-7.1-8.3-9.4 in). Bind off 10 sts each side (5 sts both sides of the markers). Put work aside, and knit sleeves.

Sleeves

Using needles size 3 mm and light violet yarn, cast on 40-42-44-46-46 sts. Work in rib same as for body. K 1 rnd, adjusting evenly across the rnd the number of sts to be 47-49-51-53-53 sts. Cont working in St st and patt I as charted (check from mid st where to beg). Cont working in St st. Place a marker mid under arm. Inc 1 st both sides of the marker approx. every 1½-1½-1½-2-1½ cm (0.6-0.6-0.6-0.8-0.6 in) until you have 61-65-71-75-81 sts on a rnd. When work measures 16-19-23-28-31 cm (6.3-7.5-9.1-11-12.2 in), or desired length, bind off 10 sts mid under arm

(5 sts both sides of the marker). Put work aside, and work same for the other sleeve.

Yoke: Slip all sts on same circular needle = 214-234-258-278-302 sts. Adjust evenly across the rnd the number of sts to be 204-228-252-276-300 sts. Beg with 2-2-4-6-6 rnds in St st with light violet yarn. Cont working in rnds in patt II and dec as charted. When patt is ready, cont working in light violet yarn.

Neck border: Change to needles size 2½ mm. Beg mid back, and cont working back and forth. Adjust evenly across first row the number of sts to be 68-72-76-78-80 sts. Work approx. 2 cm (0.8 in) in K1,P1 rib. Bind off in rib. Crochet a buttonhole loop to border edge, and sew a button on the other side.

Sew under arm seams. Weave in all ends on WS.

HAT, circumference 37-41-45 cm (14.6-16.1-17.7 in)

Using needles size 2½ mm and light violet yarn, cast on 104-114-126 sts. Work in rib same as for body. Change to needles size 3 mm. K1 rnd, adjusting evenly across the rnd the number of sts to be 144-156-168 sts. When work measures approx. 10-12-14 cm (4-4.7-5.5 in) measured from cast-on edge, beg crown dec: *K10, K2tog*, rep *-* across the rnd. Work 1 rnd without dec. Rep dec every 2nd rnd with 1 st less between each dec until 24-26-28 sts rem. Next rnd: K all sts tog in pairs = 12-13-14 sts. Break yarn, thread through rem sts, pull tightly and weave in ends on WS.

SOCKS

Using dpn size 2½ mm and light violet yarn, cast on 40-42-44-46-48 sts. Work in rib same as for body. Change to dpn size 3 mm, and cont working in light violet yarn. Heel, work back and forth over mid back 20-21-22-23-24 sts: work until 1 st rem, turn, and work until 1 st rem at the other edge, turn. Cont working in the same way until 6-7-8-9-10 mid sts rem. Turn, and work 1 st more each row. To avoid holes, M1 between last mid st and next st, Ktogtbl these 2 sts. When all sts are returned back to work, cont working in rnds in St st over all sts. When foot measures 7-8-9-10-11 cm (2.8-3.1-3.5-4-4.3 in), or desired length, divide sts evenly on 4 dpn. Dec 1 st beg of each needle every 2nd rnd 4 times, and then every rnd until 8 sts rem. Break yarn, and thread through rem sts. Pull tightly, and weave in all ends on WS. Work same for the other sock.

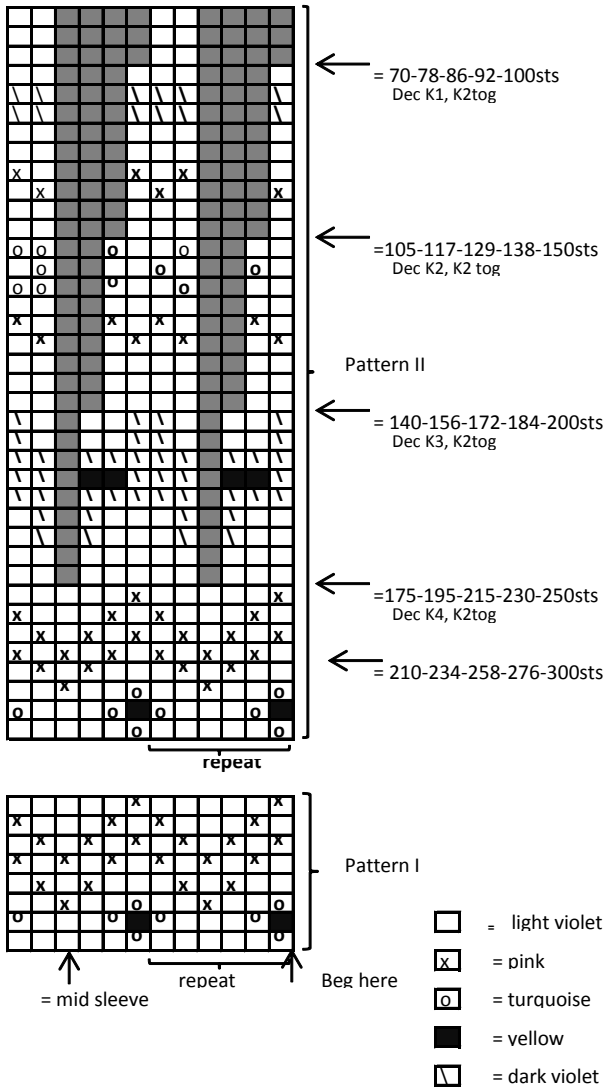
Viking Baby Ull

Sweater and trousers

1101-4

Viking **BABY ULL** (100% superwash wool), 50 g ball

Alternative yarns: Viking **PURE MILK FIBER** (100% milk fiber), 50 g ball



Size	6 mounts	1	2	3/4	yrs
Chest	51	55	60	65	cm
	20.1	21.7	23.6	25.6	in
Length	25	30	33	36	cm
	9.8	11.8	13	14.2	in
Sleeve length	18	21	25	28	cm
	7.1	8.3	9.8	11	in
Hips	44	51	51	57	cm
	17.3	20.1	20.1	22.4	in
Leg length	18	22	26	30	cm
	7.1	8.7	10.2	11.8	in

Materials

Sweater

Light Blue, 3 4 4 5 balls
322

Grey, 314 1 1 1 1 ball

Green, 331 1 1 1 1 ball

Marine Blue, 326 1 1 1 1 ball

Trousers

Light Blue, 2 2 3 3 balls
322

Double pointed needles and circular needle size 3 mm – US 2 or 3 - UK/Canadian 11

Gauge: 28 sts = approx. 10 cm (4 in) over St st using needles size 3 mm. Check your gauge to ensure success.

SWEATER

Using needles size 3 mm and light blue yarn, cast on 142-154-168-182 sts. Work in rnds 3 cm (1.2 in) in St st. P 1 rnd = folding edge + 3 cm (1.2 in) in St st. Cont working in St st until work measures approx. 12-16-18-20 cm (4.7-6.3-7.1-7.9 in). Place markers each side, 71-77-84-91 for both back and front. Bind off for armhole 10 sts at each side (5 sts both sides of the markers). Finish each side separately.

Back

Cont working back and forth and beg raglan-dec at each edge: Beg from RS. K2, K2togtbl, work until 4 sts rem, K2tog, K2. K first and last st every row = selvage st. Rep raglan-dec altog 25-27-29-31 times = 21-23-26-29 sts rem. Slip sts on holder.

Front

Work same as for back. When work measures approx. 3 cm (1.2 in) less than back, bind off mid 11-11-12-15 sts. Finish each side separately. Rep raglan-dec altog. 25-27-29-31 times. Leave rem sts on holder.

Sleeves

Using needles size 3 mm and light blue yarn, cast on 54-60-66 sts. Work in rnds K2, P2, K4*, rep *-* across the rnd, ending with K2. Work 6 rnds. Same time, place a marker mid under arm. Inc 1 st both sides of the marker every 4th rnd until you have altog. 86-92-98-104 sts on a rnd. Cont working in striping as foll: *2 rnds in grey, 2 rnds in green, 4 rnds in marine blue, 2 rnds in light blue, 6 rnds in grey, 2 rnds in green, 2 rnds in marine blue, 4 rnds in light blue, 2 rnds in grey, 6 rnds in green, 2 rnds in marine blue, 2 rnds in light blue, 4 rnds in grey, 2 rnds in green, 6 rnds in marine blue, 2 rnds in light blue, 2 rnds in grey, 4 rnds in green, 2 rnds in

marine blue, 6 rnds in light blue*, rep *-* until end. When work measures 16-18-20-24 cm (6.3-7.1-7.9-9.4 in), bind off 10 sts mid under arm (5 sts both sides of the markers). Cont working back and forth, and work raglan-dec same as for back and front. Note! dec 1 st in each p-panel (= 1 p-st rem in each panel). Rep raglan-dec altog. 25-27-29-31 times = 18-16-18-16 sts rem (incl 8-12-12-16 p-sts that were dec earlier). Bind off.

Finishing: Sew on sleeves, and sew under arm seams.

Hood: Slip sts from holders on needles size 3 mm, and pick or knit up with light blue yarn approx. 72-74-80-86 sts along neck edge. Work back and forth in St st. Place a marker mid back = 36-37-40-43 sts for each side. Inc 1 st both sides of the marker every 2nd row until work measures approx. 21-23-24-25 cm (8.3-9.1-9.4-9.8 in). Slip sts on holder. Join top seam.

Using needles size 3 mm and light blue yarn, pick or knit up along split edge and hood's front edge 1 st from approx. every st = approx. 170-176-182-188 sts. Work in rnds in P2,K4 rib, ending with P2. Work in stripes (same as for sleeves), until border measures approx. 4-4-5-5 cm (1.6-1.6-2-2 in). Bind off. Fold border in double, and sew on WC leaving a hole mid front for threading in a cord. Twist a cord using all 4 clr, and thread it in the border. Weave in all ends on WS. Fold the lower edge in double, and sew on WS.

TROUSERS

Beg with one leg. Using needles size 3 mm and light blue yarn, cast on 62-70-70-78 sts. Work in rib with stripes, same as for sleeves, beg and end the rnd with P2. When work measures approx. 4 cm (1.6 in) (same for all sizes), cont working in St st and light blue clr. Place a marker beg of rnd = inner seam. Inc 1 st both sides of the marker approx. every 3½-3½-4-4 cm (1.4-1.4-1.6-1.6 in) until you have altog. 70-80-80-90 sts on a rnd. When work measures approx. 18-22-26-30 cm (7.1-8.7-10.2-11.8 in), put work aside, and knit the other leg. Slip both legs on same circular needle

with inner seams facing each other. Place markers mid front and back. Cont working in rnds and dec 1 st both sides of the markers every 2nd rnd altog. 4-4-4-5 times = 124-144-144-160 sts on a rnd. When work measures approx. 16-18-21-24 cm (6.3-7.1-8.3-9.4 in), measured from crotch, place markers each side with 62-72-72-80 sts for both back and front. Work short rows to rise the back of the trousers, beg mid back. Work 5 sts, turn, work 10 sts, turn. Cont working in same way until you have turned at each side altog. 4-5-5-5 times. K 1 rnd over all sts. Work 3 cm (1.2 in) in St st, P 1 rnd = folding edge + 3 cm (1.2 in) in St st. Fold border in double, and sew on WS. Thread an elastic

to the waist. Weave in all ends on WS.

Viking Baby Ull

Dress, cardigan and hat

1101-5

Viking **BABY ULL** (100% superwash wool), 50 g ball

Alternative yarn: Viking **PURE MILK FIBER** (100% milk fiber), 50 g ball

Size	6 mounts	1	2	3/4	yrs
Chest	41	47	53	59	cm
	16.1	18.5	20.9	23.2	in
Length	41	46	51	56	cm
	16.1	18.1	20.1	22	in
Sleeve length	18	20	24	27	cm
	7.1	7.9	9.4	10.6	in

Materials

Dress

Marine Blue, 4 5 5 6 balls
326

White, 300 1 1 2 2 balls

Cardigan

Marine Blue, 2 3 3 4 balls
326

Hat

Marine Blue, 326 1 ball for all sizes

White, 300 1 ball for all sizes

Double pointed needles and circular needle size 3 mm – US 2 or 3 - UK/Canadian 11

+ 3 buttons for dress

+ 4 buttons for cardigan

Gauge: 28 sts = approx. 10 cm (4 in) over St st using needles size 3 mm. Check your gauge to ensure success.

Seed st:

1st rnd: *K1, P1*

2nd rnd: K all p-sts, P all k-sts.

Rep 2nd rnd.

DRESS

Using needles size 3 mm and white yarn, cast on 224-256-288-320 sts. Work 6 rnds in Seed st. Cont working in St st. When work measures approx. 5-6-7-7 cm (2-2.4-2.8-2.8 in), change to marine blue yarn. When work measures approx. 30-34-37-40 cm (11.8-13.4-14.6-15.7 in), adjust evenly across the rnd the number of sts to be 130-140-160-180 sts. Place markers each side, 65-71-81-91 sts for front, and 65-69-79-89 sts for back. Bind off for armholes 10 sts each side (5 sts both sides of the markers). Finish each side separately.

Front

Cont working back and forth in St st. Bind off at each edge every 2nd row 1x3, 1x2 and 1x1 sts. When armhole measures approx. 3 cm (1.2 in), change to white yarn. When armhole measures approx. 8-9-10-11 cm (3.1-3.5-4-4.3 in), bind off 9-11-13-15 mid sts. Finish each side separately. Bind off at neck edge every 2nd row 1x3, 1x2 and 1x1 sts = 11-13-17-21 sts rem for shoulder. When armhole measures 11-12-13-15 cm (4.3-4.7-5.1-5.9 in), bind off. Work same for the other side, rev all shaping.

Back

Work same as for front. When armhole measures 3 cm (1.2 in), bind off mid st. Finish each side separately. Note! Remember to change clr. When work measures same as front, bind off sts. Work same for the other side, rev all shaping.

Sleeves

Using needles size 3 mm and marine blue yarn, cast on 34-36-38-40 sts. Work 6 rnds in Seed st. K 1 rnd, adjusting evenly across the rnd the number of sts to be 46-50-54-60 st. Cont working in rnds in St st. Place a marker mid under arm. Inc 1 st both sides of the marker approx. every 2½-2½-2-2 cm (1-1-0.8-0.8 in) until you have 58-64-74-86 sts on a rnd. When work measures 18-20-24-27 cm (7.1-7.9-9.4-10.6 in) or desired length, bind off 10 sts mid under arm (5 sts both sides of the marker). Cont working back and forth. Bind off at each edge every 2nd row 1x3, 1x2 and 1x1 sts. Bind off rem sts.

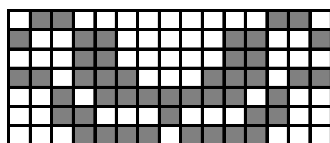
Finishing: Join shoulder seams.

Neck border: Beg mid back, using needles size 3 mm pick or knit up along neck edge approx. 80-86-90 sts. Work 6 rows in Seed st. Bind off.

Split borders: Crochet 1 row sc along each edge. Use white yarn over white and marine blue over marine blue areas. Make 3 buttonhole loops: Fasten yarn with 1 sl st, ch4, skip 2 sts, 1 sl st to next st. Make 1 buttonhole loop mid neck border, rem evenly spaced apart, approx. 3 cm (1.2 in). Sew on buttons. Set in sleeves. Weave in all ends on WS.

Sew pattern border on front as charted. Place one motif mid front, and 1 motif on each side with 3 sts in white between each motif.

NOTE! Sewn on afterwards by Swiss Darning



← = changing to white

□ = white

■ = marine-blue

HAT, sizes: 6/12 months – 2/4 years. **Circumference:** 36-40 cm (14.2-15.7 in)

Using needles size 3 mm and white yarn, cast on 100-112 sts. Work in rnds 4 cm (1.6 in) in St st, P 1 rnd = folding edge + 4 cm (1.6 in) in St st. Change to marine blue yarn. K 1 rnd. Next rnd: Adjust evenly across the rnd the number of sts to be 160-168 sts. Work 2-3 cm (0.8-1.2 in) in St st. Next rnd: Inc evenly across the rnd the number of sts to be 180-189 sts. Work again 2-3 cm (0.8-1.2 in) in St st. Beg dec: *K18-19, K2tog*, rep *-* across the rnd. K 1 rnd without dec. Rep dec every 2nd rnd with 1 st less between dec each time until 9 sts rem. Break yarn, and thread through rem sts. Pull tightly, and weave in all ends on WS. Fold lower edge in double, and sew on WS.

CARDIGAN

Using needles size 3 mm and marine blue yarn, cast on 178-190-208-226 sts. Work 6 rows in Garter st. Cont working in St st inside 5 sts at each edge (= worked in Garter st = front edges). Note! When work measures 4 cm (1.6 in), make one buttonhole on right front: 5 sts in Garter st, 2 sts in St st, bind off 2 sts (next row: cast on 2 new sts over the bound-off ones), 14-16-16-18 sts in St st, bind off next 3 sts (next row: cast on 3 new sts over the bound-off ones). Work another buttonhole pair approx. 1 cm (0.4 in) before first dec for V-neck (= altog. 4 buttonholes). Place markers each side, 54-58-62-68 sts for right front, 70-74-84-90 sts for back, and 54-58-62-68 sts for left front. Cont working in St st and Garter st over first and last 5 sts, until work measures approx. 8-10-12-15 cm (3.1-4-4.7-5.9 in).

Beg dec for V-neck. Dec 1 st at edge inside 5 edge sts. Rep dec every 2nd row altog. 25-27-29-31 times. When work measures approx. 15-19-21-22 cm (5.9-7.5-8.3-8.7 in) bind off for armhole 10 sts each side, (5 sts both sides of the markers). Finish back and front separately.

Back

Cont working back and forth. Bind off at each edge every 2nd row 1x3, 1x2 and 1x1 sts. When work measures 25-30-33-36 cm (9.8-11.8-13-14.2 in), and armhole measures approx. 10-11-12-14 cm (4-4.3-4.7-5.5 in), bind off.

Front

Work same as for back, and cont dec for V-neck until 18-20-22-26 sts rem for shoulder. When work measures same as back, slip 5 edge sts on holder. Bind off rem sts. Work same for the other front, rev all shaping.

Sleeves

Using needles size 3 mm and marine blue yarn, cast on 44-48-50-54 sts. Work 6 rows in Garter st. Cont working in rnds in St st. Place a marker mid under arm. Inc 1 st both sides of the marker approx. every 2½-2½-2½-2 cm (1-1-1-0.8 in) until you have altog. 56-62-68-78 sts on a rnd. When work measures 18-20-24-27 cm (7.1-7.9-9.4-10.6 in), or desired length, bind off 10 sts mid under arm (5 sts both sides of the marker). Cont working back and forth. Bind off at each edge every 2nd row 1x3, 1x2 and 1x1 sts. Bind off rem sts. Work same for the other sleeve.

Finishing

Join shoulder seams. Slip right front's 5 edge sts on needles size 3 mm. Work back and forth in Garter st until border reaches mid back. Slip sts on holder. Work same for left front border. Join borders mid back. Sew border along neck edge. Sew on sleeves. Weave in all ends on WS. Sew on buttons.

Viking Baby Ull

Cardigan, booties and hat 1101-6

Viking **BABY ULL** (100% superwash wool), 50 g ball

Alternative yarn: Viking **MILK FIBER** (100% milk fiber), 50 g ball

Size	1	3	6	9	12	months
Chest	45	49	52	56	59	cm
	17.7	19.3	20.5	22	23.2	in
Length	21	23	25	27	30	cm
	8.3	9.1	9.8	10.6	11.8	in
Sleeve length	14	15	16	18	20	cm
	5.5	5.9	6.3	7.1	7.9	in

Materials

Cardigan

Light Violet, 370	2	2	3	3	4	balls
Heather, 368	1	1	1	1	1	ball
Yellow, 342	use rest yarn from the cardigan					

Hat and booties

Light Violet, 370	1	1	2	2	2	balls
Heather, 369	use rest yarn from the cardigan					
Yellow, 342	use rest yarn from the cardigan					

Double pointed needles and circular needles size 3 mm - US 2 or 3 - UK/Canadian 11
+ 3 pairs of clasps

Gauge: 28 sts = approx. 10 cm/4 in over St st using needles size 3 mm. Check your gauge to ensure success.

CARDIGAN

Using needles size 3 mm, cast on 126-136-146-156-166 sts. K 1 row. Next row: 3 sts in Garter st (= front border), work in patt as charted, ending with 3 sts in Garter st. Work motif once in height. Cont working as foll: Beg with RS row. 3 sts in Garter st, patt over 10 sts, work in St st until 13 sts rem, patt (in rev, beg with P2) over 10 sts, 3 sts in Garter st. When work measures approx. 12-13-14-15-17 cm (4.7-5.1-5.5-5.9-6.7 in), place markers each side, 31-34-36-39-41 for both fronts, and 64-68-74-78-84 m for back. Beg with RS row: K 1 row and bind off at each side 10 sts for armhole (5 sts both sides of the markers). Finish back and fronts separately.

Back

Cont working back and forth in St st. When work measures 21-23-25-27-30 cm (8.3-9.1-9.8-10.6-11.8 in), and armhole measures 9-10-11-12-13 cm (3.5-4-4.3-4.7-5.1 in), bind off.

Right front

Cont working same as before. When work measures 18-20-22-24-27 cm (7.1-7.9-8.7-9.4-10.6 in), bind off at neck edge 8-8-10-12-12 sts. Bind off at neck edge every 2nd row 2x3, 1x2 and 1x1 sts (same for all sizes). When work measures same as back, bind off sts. Work same for left front, rev all shaping.

Sleeves

Using dpn size 3 mm, cast on 40-40-40-40-40 sts. Work in patt I as charted. K 1 rnd, adjusting evenly across the rnd the number of sts to be 44-48-52-58-62 sts. Cont working in rnds St st. Place a marker mid under arm. Inc 1 st at both sides of the marker approx. 3½-3-2½-3-3 cm (1.4-1.2-1-1.2-1.2 in) until you have altog. 50-56-62-68-72 sts on a rnd. When work measures 14-15-16-18-20 cm (5.5-5.9-6.3-7.1-7.9 in), or desired length, bind off 10 sts mid under arm (5 sts both sides of the marker). Cont working back and forth. Bind off at each edge every 2nd row 2x3, 1x2 and 1x1 sts. Bind off rem sts. Work same for the other sleeve.

Finishing

Sew shoulder seams.

Neck border: Beg from right front. Pick or knit up approx. 68-70-74-76-80 sts. Work 6 rows in Garter st. Bind off rather loosely.

Set in sleeves, and weave in all ends on WS. Sew on clasps, one mid neck border, rest approx. 3 cm (1.2 in) spaced apart. Embroider flowers (= Lazy Daisies and French knots) to the cables along fronts and around sleeves. See photo.

BOOTIES (1/3 – 6/9 – 12 months)

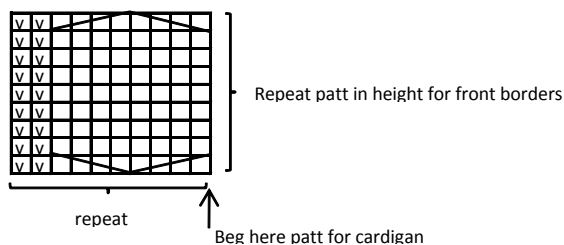
Using needles size 3 mm, cast on 42-52-52 sts. Work back and forth 6 cm (2.4 in) in patt I as charted (beg as charted), and end with P2. Work 2 rows in St st. Next row = eyelet row: *K2tog, 1 yo*, rep *-* across the row. Work 2 more rows in St st, adjusting evenly across 2nd row the number of sts to be 37-41-43 sts. Cont working in St st over mid 11 sts. When mid piece measures 5-6-7 cm (2-2.4-2.8 in), or desired length, slip sts on holder. Divide sts on 3 needles, and pick up approx. 12-15-18 sts along sides of mid piece = 61-71-79 sts altog. Work 8-10-12 rows in Garter st. Dec as foll: K25-30-34, K2tog, K9, K2tog, K25-30-34. WS: K all sts. Rep dec every RS row, each time 2 sts less than between dec until 3 sts rem in the middle. Dec rem mid sts: S11, K2tog, pssso. Bind off all sts. Weave in all ends on WS. Sew sole and mid back seams. Embroider

flowers (= Lazy Daisy and French knots) to the cable round the edge (see photo).

Twist a cord, approx. 40 cm 15.7 in) long, and thread through the eyelet row.

HAT (1/3 – 6/9 – 12 months)

Using needles size 3 mm, cast on 92-92-102 sts. Work in patt, same as for cardigan. Cont working back and forth in St st until work measures approx. 12-13-14 cm (4.7-5.1-5.5 in). K 1 row (= WS). Cont working in St st, and beg crown dec: K1, *K2tog, K6-6-8*, rep *-* across the row. Rep dec every 2nd row, each time with 1 st less between dec, until 12-12-10 sts rem. Break yarn, and thread through rem sts. Pull tightly and weave in ends on WS. Sew mid back seam, beg from top. Lower edge border: Using needles size 3 mm, knit or pick up along lower edge approx. 69-73-75 sts. Work 4 rows in Garter st. Next row (= eyelet row): *K2tog, 1 yo*, rep *-* across the row. Work 4 more rows in Garter st. Bind off. Twist a cord, approx. 70 cm (27.6 in) long, and thread through the eyelet row (you can also use a silk ribbon). Weave in all ends on WS. Embroider flowers (= Lazy Daisies and French knots) to each cable (see photo).



- = K on RS, P on WS
- ▣ = P on RS, K on WS
- ▤ = Sl 2 sts on cn, hold to back, K2, K2 sts from cn
- ▥ = Sl 2 sts on cn, hold to front, K2, K sts from cn

Viking Baby Ull

White set

1101-7

Viking BABY ULL (100% superwash wool), 50 g ball

Alternative yarn: Viking MILK FIBER (100% milk fiber), 50 g ball

Size	1	3	6	9	months
Chest	46	48	50	53	cm
	18.1	18.9	19.7	20.9	in
Length	21	23	25	27	cm
	8.3	9.1	9.8	10.6	in
Sleeve length	12	13	15	17	cm
	4.7	5.1	5.9	6.7	in
Leg length	14	15	17	19	cm
	5.5	5.9	6.7	7.5	in

Materials

Item	1	3	6	9	balls
Cardigan					
White, 300	2	3	3	3	balls
Hat and socks					
White, 300	1	1	2	2	balls
Trousers					
White, 300	3	3	3	4	balls

Circular needle and double pointed needles size 3 mm - US 2 or 3 - UK/Canadian 11.

Crochet hook size 2½ mm – US B/1 or C/2 - UK/Canadian 12
+ 4-4-5-5 small buttons for cardigan
+ 2 small buttons for trousers

Gauge: 28 sts = approx. 10 cm over St st using needles size 3 mm. Check your gauge to ensure success.

PATTERN

1st row = RS: *K1, P1*, rep *-* across row.

2nd row = WS: K all sts.

CARDIGAN

Using needle size 3 mm, cast on 119-125-131-139 sts. Work back and forth in patt. Inc 1 st beg of each row 5 times = 129-135-141-149 sts. Work inc sts in patt. When work measures approx. 12-13-14-15 cm (4.7-5.1-5.5-5.9 in), place markers both sides, 65-69-71-75 sts for back, and 32-33-35-37 sts for both fronts. Finish each side separately.

Back

Cont working back and forth in patt. When work measures approx. 21-23-25-27 cm (8.3-9.1-9.8-10.6 in), and armhole measures approx. 9-10-11-12 cm (3.5-4-4.3-4.7 in), bind off sts.

Front

Work same as for back. When work measures approx. 18-20-22-23 cm (7.1-7.9-8.7-9.1 in), bind off at neck edge: 1x8-9-10, 1x3, 1x2 and 1x1 sts. When work measures same as back, bind off sts. Work same for the other side, rev all shaping.

Sleeves

Using needles size 3 mm, cast on 41-43-45-47 sts. Work back and forth in patt. Inc 1 st at each edge approx. every 2-1½-1½-1½ cm (0.8-0.6-0.6-0.6 in), until you have altog. 51-57-61-67 sts on a row. When work measures 12-13-15-17 cm (4.7-5.1-5.9-6.7 in), or desired length, bind off sts. Work same for the other sleeve.

Finishing

Join shoulder seams.

Crochet border around lower edge, fronts, neck and sleeves:

Work 1 rnd sc. Next rnd = picot edge: *Ch3, 1 sl st to first ch, skip 1 st, insert hook to next st*, rep *-* across the rnd. Note! Right front edge: skip 2 sts in order to form small buttonholes, one at neck edge, one approx. 8-9-10-11 cm (3.1-3.5-4-4.3 in) from lower edge, and rest 4-4-5-5 evenly spaced apart.

HAT (girl)

Using needles size 3 mm, cast on 96-96-104-104 sts. Work 4-4-5-5 cm (1.6-1.6-2-2 in) in patt. Next rnd: *K2tog, 1 yo*, rep *-* across the rnd. Cont working in St st until work measures approx. 11-12-13-14 cm (4.3-4.7-5.1-5.5 in). Beg dec: *K6, K2tog*, rep *-* across the rnd. Rep dec every 2nd rnd with 1 st less between each dec, until 24-24-26 sts rem. K all sts tog in pairs = 12-12-13-13 sts rem. Break yarn, and thread through rem sts. Pull tightly and weave in all ends on WS. Twist a cord, and thread through eyelet rnd, tie a bow on one side.

HAT (boy)

Beg with one ear flap. Cast on 5 sts. Work 2 first and last sts in Garter st every row, and patt over rem sts. Work back and forth, and inc 1 st every 2nd row at each edge inside 2 sts. Inc sts are worked in patt. Rep inc until you have 20-20-22-22 sts on a row. Put work aside, and knit the other ear flap. Slip both ear flaps on same circular needle, and work as foll: K sts for one ear flap, cast on 17-17-19-19 sts = mid back, K sts for the other ear flap, cast on 41-41-41-41 sts = mid front = 98-98-

104-104 sts on a rnd. Cont working in rnds in patt until work measures approx. 4-4-5-5 cm (1.6-1.6-2-2 in), measured mid front. Cont working in St st until work measures approx. 8-9-10-11 cm (3.1-3.5-4-4.3 in). Beg dec: *K2, K2tog*, rep *-* across the rnd. Rep dec every 2nd rnd with 1 st less between each dec, until 24-24-26-26 sts rem. K all sts tog in pairs = 12-12-13-13 sts rem. Break yarn, and thread through rem sts. Pull tightly, and weave in all ends on WS. Twist cords and attach to ear flaps.

TROUSERS

Beg from one leg. Using needles size 3 mm, cast on approx. 40-40-44-44 sts. Work in rnds 4 cm (1.6 in) in patt. K 1 rnd, adjusting evenly across the rnd the number of sts to be 76-80-88-88 sts. Cont working in St st. Place a marker at inner seam. Inc 1 st approx. every 3-3½-3-3½ cm (1.2-1.4-1.2-1.4 in) until you have altog. 82-86-96-96 sts on a rnd. When work measures approx. 14-15-17-19 cm (5.5-5.9-6.7-7.5 in), leave work aside, and knit the other leg. Slip both legs on same circular needle size 3 mm (with inner seams facing each other) = 164-172-192-192 sts. Cont working in rnds over all sts. Place markers mid front and back. Dec 1 st (after the marker: K2tog; before the marker: K2togtbl)

both sides of the markers every 2nd rnd altog 4 times = 148-156-176-176 sts. When work measures approx. 32-35-38-41 cm (12.6-13.8-15-16.1 in). If you want to adjust the length of the garment, this is where you need to do that. Work short rows to rise the back of the trousers: Beg from mid back, work 5-5-7-7 sts, turn, work 14 sts. Cont working 7 more sts each row and turning 5-5-4-4 more times at each side. K 1 rnd over all sts, adjusting evenly across the rnd the number of sts to be 112-120-126-134 sts. Work an eyelet rnd: *K2tog, 1 yo*, rep *-* across the rnd. Place new markers each side, 55-59-63-67 sts for front and 57-61-63-67 sts for back. Work 2-2-3-3 cm (0.8-0.8-1.2-1.2 in) in patt. Bind off 8-8-10-10 sts at each side (4-4-5-5 sts both sides of the markers). Finish each side separately.

Back

Cont working back and forth in patt. Bind off at each edge every 2nd row 1x3, 1x2 and 1x1 sts. When armhole measures approx. 6-7-8-9 cm (2.4-2.8-3.1-3.5 in), bind off mid 19-21-23-25 sts. Finish each side separately. Cont working back and forth, and bind off at neck edge every 2nd row 1x2 and 1x1 sts. When armhole measures approx. 7-8-9-10 cm (2.8-3.1-3.5-4 in), bind off. Work same for the other side, rev all shaping.

Front

Work and bind off for armhole same as for back. When armhole measures approx. 4-5-6-7 cm (1.6-2-2.4-2.8 in), bind off mid 13-15-17-19 sts. Work each side separately. Bind off at neck edge every 2nd row 1x3, 1x2 and 1x1 sts. When work measures same as back, bind off sts. Work same for the other side.

Crochet border around neck edge: Beg from shoulder. Using hook size 2½ mm, crochet 1 rnd sc along armholes and neck edge. Next rnd = picot edge: *Ch3, 1 sl st to first ch, skip 1 st, 1 sc to next st*, rep *-* across the rnd. Note: make buttonholes on shoulders (on front), see cardigan (skip 3 sts). Work same for the legs. Sew buttons on back.

SOCKS

Using needles size 3 mm, cast on 38-40-42-44 sts. Work 4-4-5-5 cm (1.6-1.6-2-2 in) in patt. Work 1 eyelet row: *K2tog, 1 yo*, rep *-* across the row. Heel, work over mid back 18-20-20-22 sts: work until 1 sts rem, turn, work until 1 st rem on the other side, turn, and work 1 time 1 st less until 5-6-6-7 sts rem in mid. Turn, and work 1 st more for each row. To avoid holes, M1 between last mid st and next st, Ktogtbl these 2 sts. When

all sts are returned back to work, cont working in St st over all sts. Place markers each side (upper part and sole). Dec 1 st at each side every 2nd rnd altog. 4-4-5-5 times = 30-32-32-34 sts rem. When foot measures approx. 7-8-9-10 cm (2.8-3.1-3.5-4 in), or desired length, divide sts on 4 dpn. Dec 1 st beg of each needle every 2nd rnd 4 times, and then every rnd until, 6-8-8-10 sts rem. Break yarn, and thread through rem sts. Pull tightly, and weave in ends on WS. Work same for the other sock. Twist a cord and thread through the eyelet row. Work a crochet edge for the socks, same as for cardigan.

Viking Baby ull

Cardigan, hat and socks 1101-8

Viking **BABY ULL** (100% superwash wool), 50 g ball

Alternative yarn: Viking **MILK FIBER** (100% milk fiber), 50 g ball

Size	1	3	6/9	12/18	months
Chest	46	49	52	58	cm
	18.1	19.3	20.5	22.8	in
Length	21	23	26	31	cm
	8.3	9.1	10.2	12.2	in
Sleeve length	14	16	18	22	cm
	5.5	6.3	7.1	8.7	in

Materials

Cardigan

Yellow, 345 2 2 3 3 balls
Green, 331 1 1 1 1 ball

Hat and socks

Yellow, 345 1 ball for all sizes
Green, 331 1 ball for all sizes

Double pointed and circular needles size 2½ and 3 mm - US 1 or 2 and 2 or 3 - UK/Canadian
13 or 12 and 11
+ 5 buttons

Gauge: 28 sts = approx. 10 cm (4 in) over St st using needles size 3 mm. Check your gauge to ensure success.

CARDIGAN

Using needles size 3 mm and yellow yarn, cast on 130-138-146-162 sts. Work 2 cm (0.8 in) in Garter st. Sl 6 first and last sts on holder (= front borders). Cont working inside selvage sts (= K at each edge on every row) over rem sts in patt as charted. Place markers each side, 62-72-76-84 sts for back, and 31-33-35-39 sts for both fronts. When work measures approx. 13-14-16-20 cm (5.1-5.5-6.3-7.9 in), ending with 2 rnds in yellow, bind off 8 sts each side (4 sts both sides of the markers). Put work aside, and knit the sleeves.

Sleeves

Using needles size 3 mm and yellow yarn, cast on 30-30-34-34 sts. Work 2 cm (0.8 in) in Garter st. K 1 rnd, adjusting evenly across the number of sts to be 34-36-38-40 sts. Cont working in patt and stripes. Inc 1 st each side approx. every 2½-2-1½-1½ cm (1-0.8-0.6-0.6 in) until you have altog. 44-50-56-62 sts on a rnd. When work measures 14-16-18-22 cm (5.5-6.3-7.1-8.7 in), or desired length, bind off 8 sts mid under arm (4 sts both sides of the marker). Work same for the other sleeve.

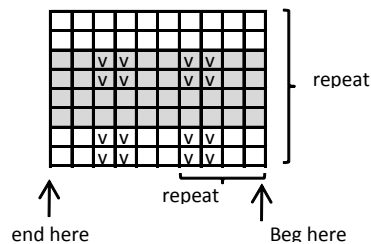
Yoke: Slip all sts on same circular needle size 3 mm, sleeve sts over the bound-off sts for armholes = 174-194-214-242 sts. Cont working back and forth in Garter st, and beg dec at each 4 raglan seam lines: Work until 3 sts rem before a marker,

K2togtbl, K2, K2tog. Rep dec every 2nd row until you have completed altog. 16-18-20-22 dec, and 46-50-54-66 sts rem. Cont working with front borders.

Right front border: Sl sts on needles size 3 mm, and cont working in Garter st until border reaches up to neck edge. Sew the border along front edge. Sl sts on holder. Place 5 markers for buttons, 1 mid neck border, 1 approx. 3 cm (1.2 in) from the lower edge, and rest evenly spaced apart. Work same for left front border, but make 5 buttonholes. Buttonhole: Bind off 2 sts. Next row: Cast on 2 new sts over bound-off sts.

Neck border: Beg from RS, using needles size 2½ mm and yellow yarn, knit up approx. 60-64-68-78 sts. Cont working back and forth in Garter st, and make last buttonhole on left side when work measures 1 cm (0.4 in). Bind off rather loosely.

Sew on sleeves, and weave in all ends on WS. Sew on buttons.



- = K on RS, P on WS, yellow
- ▣ = P on RS, K on WS, yellow
- = K in green
- ▤ = P in green

HAT (size 1/3 and 9/18 months) Circumference = 36-40 cm (14.2-15.7 in)

Using needles size 2½ mm and yellow yarn, cast on 100-112 sts. Work back and forth 2 cm (0.8 in) in Garter st. Cont working in patt as charted. When work measures 12-14 cm (4.7-5.5 in), cont working in St st and yellow yarn. Beg crown dec: *K2, K2tog*, rep *-* across the rnd. Work 3 rows without dec. Next rnd: K all sts tog in pairs = 25-28 sts rem. Work 3 rows without dec. K all sts tog in pairs until 13-14 sts rem. Break yarn, and thread through rem sts. Weave in all ends on WS. Sew mid back seam until stripe patt.

Border: Using needles size 2½ mm and yellow yarn, pick or knit up approx. 55-61 sts along the lower edge. K 2 rows. Next row: *K2tog, 1 yo*, rep *-* across the row, end with K1. K 2 rows. Bind off sts. Twist a cord, and thread through the eyelet row.

SOCKS

Using needles size 2 mm and yellow yarn, cast on 40-42-44-46 sts. Work 8 cm (3.1 in) in rnds in K1,P1 rib. Change to needles size 3 mm, and work for heel over mid back 20-21-22-23 sts: work until 1 st rem, turn, and work until 1 st rem on the other side, turn, and work each time 1 st less until 6-7-8-9 sts rem in mid. Turn, and work 1 st more each row. To avoid holes, M1 between last mid st and next st, Ktogtbl these 2 sts. When all sts are returned back to work, cont working in St st over all sts. When foot measures 8-9-10-11 cm (3.1-3.5-4-4.3 in), or desired length, divide sts on 4 dpn. Dec 1 st beg of each needle every 2nd rnd 4 times, and then every rnd until 8 sts rem. Break yarn, and thread through rem sts. Pull tightly and weave in all ends on WS.

Work same for the other sock.

Viking Baby Ull

Cardigan, hat and trousers 1101-9

Viking **BABY ULL** (100% superwash wool), 50 g ball

Alternative yarn: Viking **MILK FIBER** (100% milk fiber), 50g ball

Size	1/3	6/9	12/18	months
Chest	52	56	61	cm
	20.5	22	24	in
Length	25	27	32	cm
	9.8	10.6	12.6	in
Sleeve length	13	14	16	cm
	5.1	5.5	6.3	in
Leg length	13	15	17	cm
	5.1	5.9	6.7	in

Materials

Cardigan

Light Pink, 362 2 3 3 balls

Pink, 361 1 1 1 ball

Trousers

Pink, 361 2 2 3 balls

Hat and socks

Light pink, 362 1 ball for each size

Pink, 361 1 ball for each size

Double pointed needles and circular needle size 2½ and 3 mm – US 1 or 2 and 2 or 3 – UK/Canadian 13 or 12 and 11 Crochet hook size 2½ mm – US B/1 or C/2 –UK/Canadian 12.

+ 5-6 buttons

Gauge: 28 sts = approx. 10 sts over St st using needles size 3 mm. Check your gauge to ensure success.

CARDIGAN

Using needles size 3 mm and pink yarn, cast on 147-159-173 sts. Work back and forth 2 cm (0.8 in) in St st. RS row: *K2tog, 1 yo*, rep *-* across the row = folding edge. Work 2 cm (0.8 in) in St st. Work patt I as charted, and cont after that rep patt II. Place markers each side, 75-81-89 sts for back, and 36-39-42 sts for both fronts. When work measures approx. 15-16-20 cm (5.9-6.3-7.9 in), bind off 10 sts each side (5 sts both sides of the markers). Finish back and front separately.

Back

Cont working back and forth. Bind off at each edge every 2nd row 2x2 and 1-2-2x1 sts = 55-59-67 sts rem. When work measures approx. 25-27-32 cm (9.8-10.6-12.6 in), and armhole measures approx. 10-11-12 cm (4-4.3-4.7 in), bind off

Left front

Work and bind off for armhole same as for back. When work measures approx. 22-23-28 cm (8.7-9.1-11 in), bind off at neck edge every 2nd row 1x8-9-10, 1x3, 1x2 and 1-2-3x1 sts = 12-12-13 sts rem for shoulder. When work measures same as back, bind off.

Work same for right front, rev all shaping.

Sleeves

Using needles size 3 mm and pink yarn, cast on 32-34-36 sts. Work for folding edge same as for body. Work patt I as charted. K 1 rnd, adjusting evenly across the rnd the number of sts to be 49-51-53 sts. Cont working in patt II as charted. Inc 1 st at each edge approx. every 2½-2-1½ cm (1-0.8-0.6 in) until you have 57-61-67 sts on a row. When work measures 13-15-17 cm (5.1-5.9-6.7 in), or desired length, bind off 10 sts mid under arm (5 sts both sides of the marker). Cont working back and forth. Bind off at each edge every 2nd row 2x2 and 1x1 sts. Bind off rem sts. Work same for the other sleeve.

Finishing

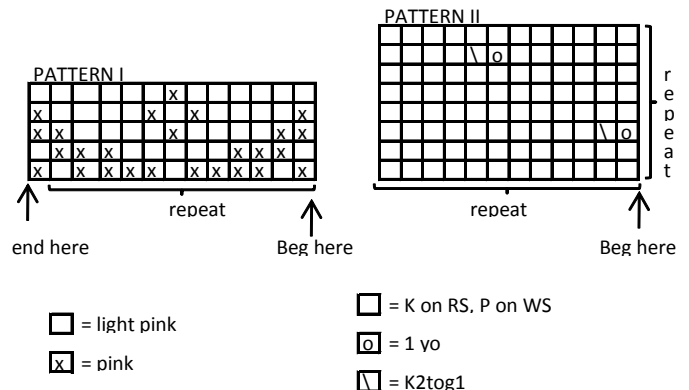
Sew shoulder seams. Fold hem and sleeve borders in double and sew on WS.

Neck border: Using needles size 2½ mm and pink yarn, pick or knit up approx. 55-59-63 sts. Work 3 rows in Garter st. Bind off.

Front borders: Using needles size 2½ mm and pink yarn, pick or knit up approx. 61-65-69 sts. Work 3 rows in Garter st. Bind off. Work same for the other border.

Buttonhole loop: Fasten yarn with 1 sl st, ch5, skip 2 st, 1 sl st to next st. Crochet altog 5-6-6 buttonhole loops along right front edge.

Sew on sleeves.



HAT

Using needles size 3 mm and pink yarn, cast on 97-109-121 sts. Work for folding edge same as for cardigan. Work patt I, and after that cont working back and forth in patt II as charted. When work measures 11-12-14 cm (4.3-4.7-5.5 in), cont working back and forth in St st, and dec for crown: *K2, K2tog*, rep *-* across the row. K 2 rows without dec. Rep dec with 1 st less between each dec. K 3 rows. K all sts tog in pairs = 24-27-30 sts rem. K 3 rows without dec. K all sts tog in pairs until 12-14-15 sts rem. Break yarn, and thread through rem sts. Pull tightly, and weave in ends on WS. Sew crown seam mid back.

Lower edge border: Using needles size 2½ mm and light pink yarn, pick or knit up approx. 55-59-61 sts across lower edge. K 2 rows. Next row: *K2tog, 1 yo*, rep *-* across the row, ending with K1. K 2 rows. Bind off. Twist a cord using light pink yarn, and thread through eyelet row.

TROUSERS

Beg from lower edge of right leg. Using dpn size 2½ mm and pink yarn, cast on 48-54-54 sts. Work 3 cm (1.2 in) in St st. Next rnd: *K2tog, 1 yo*, rep across the rnd (= folding edge) + 3 cm (1.2 in) in St st. Change to needles size 3 mm. K 1 rnd, adjusting evenly across the rnd the number of sts to be 64-70-74 sts. Cont working in St st. Place a marker at inner seam. Inc 1 st both sides of the marker approx. every 1-1-1½ cm (0.4-0.4-0.6 in) until you have 78-86-90 sts on a rnd. When work measures 13-15-17 cm (5.1-5.9-6.7 in), put work aside. Knit the other leg.

Slip both legs on same circular needle size 3 mm with inner seams facing each other = 156-172-180 sts. Place markers mid front and back. K2tog both sides of the markers every 2nd rnd 4 times = 140-156-164 sts. When work measures 17-19-21 cm (6.7-7.5-8.3 in), measured from crotch, place markers both sides, 70-78-82 sts for back and front. Work short rows to rise the back of trousers: Beg mid back, work 6 sts, turn, work 12 sts. Cont working 6 more sts before each turning, altog 4 turnings at each edge. K 1 rnd over all sts, adjusting evenly across the rnd the number of sts to be 130-146-152 sts. Work 3 cm (1.2 in) in St st. Next rnd: *K2tog, 1 yo*, rep *-* across the rnd + 3 cm (1.2 in) in St st. Bind off. Fold borders in double, and sew on WS. Weave in all ends owns. Sew crotch seam. Thread an elastic on waist.