

Viking Alpaca Silk

Cardigan with hood

1012-1

Viking ALPACA SILK, (50% alpaca, 50% silk), 50 g ball

Alternative yarn: Viking BJØRK, (90% cotton, 50% merino wool), 50 g ball

Size	S	M	L	XL	
Bust	85	90	95	100	cm
	33.5	35.4	37.4	39.4	in
Length	58	60	62	62	cm
	22.8	23.6	24.4	24.4	in
Sleeve length	49	50	50	51	cm
	19.3	19.7	19.7	20.1	in
Waist	78	82	88	94	cm
	30.7	32.3	34.6	37	in
Hips	95	100	105	110	cm
	37.4	39.4	41.3	43.3	in

Materials

Marine, 426	13	14	15	16	balls
Red, 450	1	1	1	1	ball
White, 400	1	1	1	1	ball

Circular needle and double pointed needles size 3 mm – US 2 or 3 – UK/Canadian 11.

Approx. 60-60-65-65 cm/23.6-23.6-25.6-25.6 in long zipper (measure actual length from ready garment).

Gauge: 25 sts = approx. 10 cm/4 in over St st, using needles size 3 mm. Check your gauge to ensure success.

CARDIGAN

Using needles size 3 mm and red yarn, cast on 240-252-264-276 sts. Work back and forth 3-3-4-4 cm/1.2-1.2-1.6-1.6 in, in K2,P2 rib. Work 1 row in St st, adjusting the number of sts to be 241-253-265-277 sts. Place markers each side, 121-127-133-139 sts for back, and 60-63-66-69 sts for each front. Cont working in St st and patt I as charted. Change to marine clr, and work in St st until work measures approx. 9-10-10-10-10 cm/3.5-4-4-4 in. Dec 1 st on both sides of the markers every 4th row altogether 11 times (same for all sizes) = 197-209-221-233 sts. When work measures approx. 29-31-31-31 cm/11.4-12.2-12.2-12.2 in, inc 1 on both sides of the markers every 6th row altogether 4 times (same for all sizes) = 213-225-237-249 sts. When work measures approx. 36-38-39-39 cm/14.2-15-15.4-15.4 in, bind off at each side 16 sts (8 sts on both side of the marker). Finish back and fronts separately.

Back (= 91-97-103-109 sts)

Cont working back and forth using marine clr. Bind off at each edge every 2nd row 1x3, 1x2 and 1x1 sts (same for all sizes). When work measures approx. 39-41-43-43 cm/15-16.1-16.9-16.9 in, and armhole measures 3-3-4-4 cm/1.2-1.2-1.6-1.6 in, cont working in patt II as charted (beg as shown on the chart). Cont working in red clr until work measures 58-60-62-62 cm/22.8-23.6-24.4-24.4 in (or desired length), and armhole measures approx. 22-22-23-23 cm/8.7-8.7-9.1-9.1 in, bind off rather loosely.

Right front (= 45-48-51-54 sts)

Work and bind off for armhole same as back. When work measures approx. 53-55-57-57cm/20.9-21.7-22.4-22.4 in, bind

off at neck edge 18-20-22-24 sts. Bind off at neck edge every 2nd row 1x3, 1x2 and 1x1 sts (= 15-16-17-18 sts rem for shoulder). When work measures same as back, bind off sts rather loosely.

Work same for left front, reversing all shaping.

Sleeves

Using needles size 3 mm and red yarn, cast on 48-48-52-52 sts. Work in rnds in K2,P2 rib. When work measures 3-3-4-4 cm/1.2-1.2-1.6-1.6 in, cont working in patt I as charted (= worked in rib). Place a marker mid under arm. Cont working in rib and marine clr, and inc 1 st on both side of the marker every 4th rnd (same for all sizes) until you have 110-110-116-116 sts on a rnd. When work measures approx. 49-50-50-51 cm/19.3-19.7-19.7-20.1 in (or desired length), bind off 16 sts mid under arm (8 sts on both side of the marker). Cont working back and forth in St st, and bind off at each edge every 2nd row 1x3, 1x2 and 1x1 sts. When you have worked approx. 30 cm/11.8 in (same for all sizes) in St st, bind off at each edge every 2nd row 1x1, 1x2 and 1x3 sts.

Work same for the other sleeve.

Finishing

Sew shoulder seams.

Right front border

Using needles size 3 mm and marine clr, pick or knit up from RS approx. 120-125-130-130 sts along front edge. Work back and forth 6 rows in St st. K 1 row, and bind off sts rather loosely (= WS). Using needles size 3 mm and marine clr, pick or knit up from WS approx. 120-125-130-130 sts along front edge. Work back and forth 5 rows in St st, bind off rather loosely.

Work same for left front border.

Hood (same for all sizes)

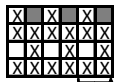
Using needles size 3 mm and red yarn, cast on 176 sts. Work back and forth approx. 3 cm/1.2 in, in St st. WS: K 1 row (= folder). Work approx. 2 cm/0.8 in, in St st, and after that cont working in patt I as charted. Cont working in marine clr, and bind off 1 st at each edge every 4th row altogether 10 times = 156 sts. When work measures approx. 27 cm/10.6 in measured from folding edge, bind off at each edge every 2nd row 4x16 sts. Bind off rem 28 sts. Fold hood in double, and sew mid back seam (along the bound-off sts). Sew hood along neck edge. Fold front edge and sew on WS. Using 1 length of each clr, twist approx. 150 cm/59.1 in long cord, and thread it through the folding edge.

Setting in the sleeves (follow the instruction carefully)

1. Beg mid under arm, sew the seam from last bound-off sts from back until last bound-off sts on front.
2. Place a marker mid sleeve top. Make 3 crinkles on each side of the marker.
3. Wear the cardigan, and set in the sleeves, making 2 more crinkles on each side (see photo). See also chart for patt II about the placing of crinkles.
4. Sew on the sleeves.

Sew zipper between the front borders.

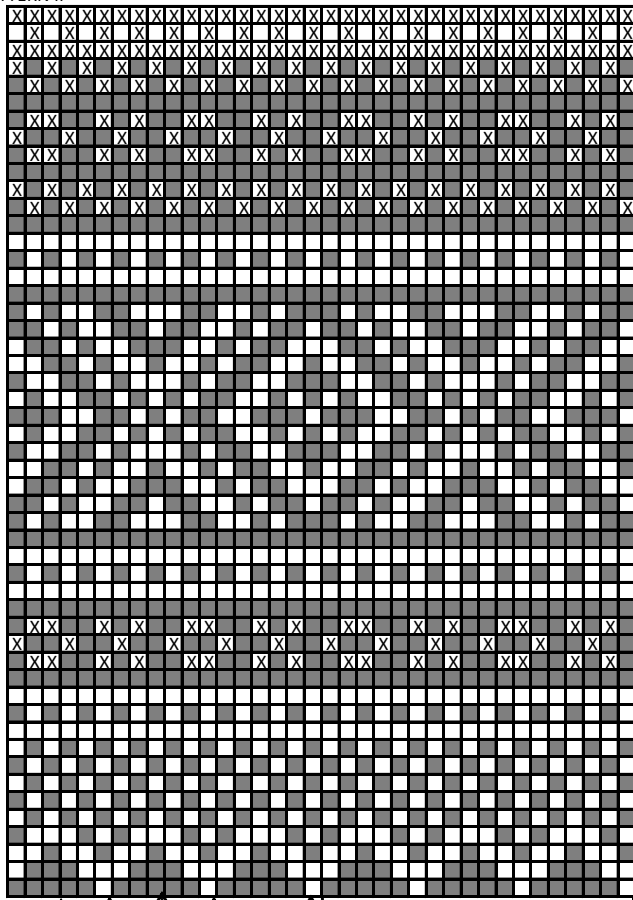
Weave in all ends on WS.



X = red
 ■ = marine

repeat
 beg here

PATTERN II



Folding of the upper crinkle should reach approx here.

Folding of the lower crinkle should reach approx here.

repeat
 beg here back, size M
 beg here back, size XL
 = mid back
 beg here right front/end here left front
 beg here back, size S
 beg here back, size L

Viking Alpaca Silk

Poncho

1012-2

Viking ALPACA SILK, (50% alpaca, 50% silk), 50 g ball
 Alternative yarn: Viking BJØRK, (90% cotton, 50% merino wool), 50 g ball

Size: Woman

Materials
 Light violet 8 balls

Short and long circular needle size 3 and 6 mm – US 2 or 3 and 10 – UK/Canadian 11 and 4.

Gauge: 25 sts = approx. 10 cm/4 in over St st, using needles size 3 mm. Check your gauge to ensure success.

NOTE! Gauge for patt: 18 sts = 10 cm/4 in using needles size 6 mm.

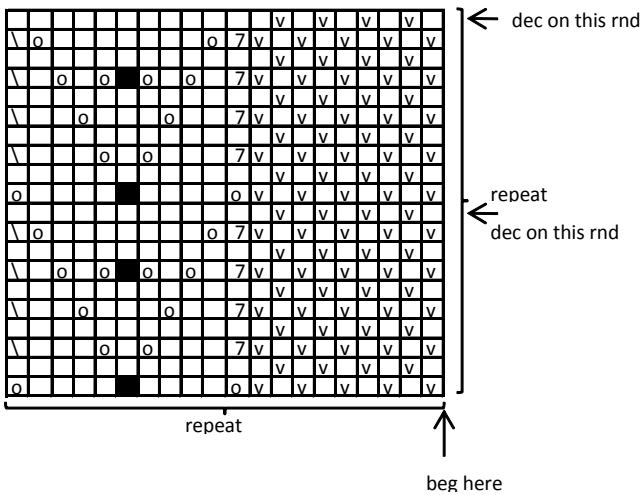
PONCHO

Using needles size 6 mm, cast on 320 sts. K 1 rnd, P 1 rnd. Cont working in patt I as charted. Dec 1 st (= K2togtbl) mid

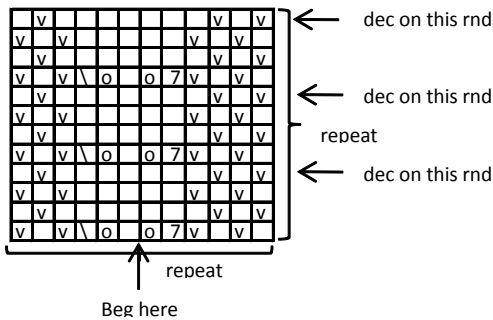
each Seed st panel every 10th rnd altogether 8 times = 192 sts (1 sts rem in Seed st panel). Cont working in patt II (arrow points out where to beg, Seed st panels will be above Lace panels). Cont dec 1 st mid each Seed st panel every 4th rnd altogether 6 times = 96 sts rem. Change to needles size 3 mm. K 1 rnd, adjusting the number of sts evenly across the rnd to be 140 sts. Cont working in rnds in K2,P2 rib. When rib measures approx. 10 cm/4 in, divide the work mid front for a split. Cont working back and forth. 1st row: MP1 to each p-stripe, and cont working in K2,P3 rib. When rib measures approx. 24 cm/9.4 in, bind off rather loosely in rib. Weave in all ends on WS.

Tie approx. 10cm/4 in long fringes along the lower edge of the poncho, approx. 3 cm/1.2 in spaced apart. Twist an approx. 100 cm/39.4 in long cord, and thread through the holes of patt II, tie mid front. Make 2 pom-poms and attach to each end.

PATTERN I



PATTERN II



- = K on RS, P on WS
- v = P on RS, K on WS
- o = vo
- 7 = K2tog
- \ = K2togtbl
- = sl1, K2tog, pss0

Viking Alpaca Silk

Sweater

1012-3

Viking ALPACA SILK (50% alpaca, 50% silk), 50 g ball
Alternative yarn: Viking BJØRK (90% cotton, 10% merino wool), 50 g ball

Size	S	M	L	
Bust	90	95	100	cm
	35.4	37.4	39.4	in
Length	60	60	62	cm
	23.6	23.6	24.4	in
Sleeve length	52	54	54	cm
	20.5	21.3	21.3	in

Materials

Grey, 415	8	8	9	balls
Mustard, 445	1	1	2	balls
Blue, 424	1	1	1	ball
Light Grey, 413	2	2	2	balls
Red, 450	1	1	1	ball
Light Violet, 467	1	1	2	balls

Double pointed needles and circular needle size 2½ and 3 – US
 1 or 2 and 2 or 3 - UK/Canadian 13 or 12 and 11

Gauge: 25 sts = approx. 10 cm/4 in over St st using needles size 3 mm. Check your gauge to ensure success.

Body

Using circular needle size 3 mm and blue yarn, cast on 228-240-252 sts. Work 1 rnd in K2,P2 rib.

Change to grey yarn, and cont working in rib. When work measures approx. 18-20-20 cm/7.1-7.9-7.9 in, place markers each side, 115-121-127 sts for front and 113-119-125 sts for back. Cont working in rnds in patt as foll: 2 rnds in St st and grey yarn, *patt I, 14 rnds in St st and grey yarn, patt III, 14 rnds in St st*, rep *-*, but when work measures approx. 37-37-39 cm/14.6-14.6-15.4 in, bind off 16 sts each side (8 sts both sides of the markers).

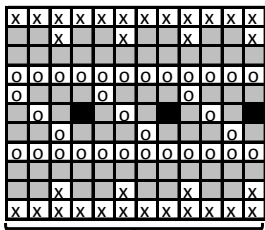
Put work aside, and knit the sleeves.

Sleeves (Note! Sleeves are extra long, and will be folded eventually)

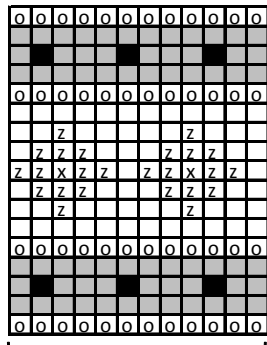
Using dpn size 3 mm and blue yarn, cast on 52-56-56 sts. Work 1 rnd in K2,P2 rib. Change to grey yarn, and cont working in rib. When rib measures approx. 12 cm/4.7 in (same for all sizes), K 1 rnd, adjusting the number of sts evenly across the rnd to be 65-69-73 sts. Cont working in rnds in St st and patt same as for body. Place marker mid under arm. Inc 1 st both sides of the marker approx. 1½ cm/0.6 in (same for all sizes) until you have 111-115-115 sts on a rnd. When sleeve measures 52-54-54 cm/20.5-21.3-21.3 in, or desired length (**Note!** End with same rnd as body – patt must match when pieces are slipped on same circular needle). Bind off 16 sts mid under arm (8 sts both sides of the markers). Leave work aside, and knit the other sleeve.

Yoke: Slip sts in (= where the sts were bound off for armholes) on same circular needle as body piece = altog 386-406-418 sts. Place 4 markers, 1 at each seam line. Cont working in rnds in patt. Dec at each 4 seam lines: K2togtbl, K2, K2tog. Rep dec every 2nd rnd until 122-126-130 sts rem. Dec 2 sts evenly across the rnd, and cont working in K2,P2 rib and grey yarn, until neck border measures approx. 10 cm/4 in (same for all sizes). Divide the work on left shoulder, and continue working back and forth until work measures altog 20 cm/7.9 in. Change to blue yarn, and work 1 rnd in rib. Bind off rather loosely in rib.

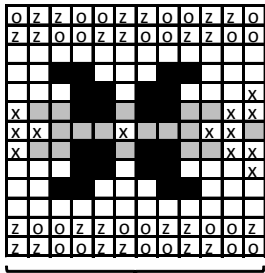
Weave in all ends on WS. Sew seams under arm.



PATTERN I
repeat



PATTERN II
repeat



PATTERN III
repeat

- = grey
- = blue
- = light violet
- = mustard
- = red
- = light grey

Viking Alpaca Silk

Cardigan

1012-4

Viking ALPACA SILK, (50% alpaca, 50% silk), 50 g ball

Alternative yarn: Viking BJØRK, (90% cotton, 10% merino), 50 g ball

Size	S	M	L	XL	
Chest	98	105	112	120	cm
	38.6	41.3	44.1	47.2	in
Length	76	78	80	82	cm
	29.9	30.7	31.5	32.3	in
Sleeve length	50	51	52	52	cm
	19.7	20.1	20.5	20.5	in

Materials

Off-White, 402 20 21 22 23 balls

Circular needle and double pointed needles size 3 mm – US 2 or 3 – UK/Canadian 11.

Gauge:

25 sts = approx. 10 cm/4 in over St st, using needles size 3 mm.

22 sts = approx. 10 cm/4 in over patt I, using needles size 3 mm.

36 sts = approx. 10 cm/4 in over patt II (cable), using needles size 3 mm. Check your gauge to ensure success.

PATTERN I

1st row (RS): K1 (= selvage st), *P1, insert the needle to the st below and K1*. Rep *-* until 1 2 sts rem, P1, K1 (= selvage st).

2nd row: K all sts.

Rep 1st - 2nd row.

PATTERN II- cable

K 1st and last st every row (= selvage st).

1st row (= RS): K all sts.

2nd row: P all sts.

3rd row: *S13 sts on cn, and hold to **back**, K3, K3 from cn*, rep *-*.

4th row: P all sts.

5th row: K all sts.

6th row: P all sts.

7th row: K3, *S13 sts on cn, and hold to **front**, K3, K3 from cn*, rep *-*.

8th row: P all sts.

Rep 1st – 8th row.

CARDIGAN

Using needles size 3 mm, cast on 318-335-352-373 sts. Work back and forth 15 rows in Garter st. P 1 row (= WS), adjusting the number of sts evenly across the row to be 281-295-311-329 sts. Cont working in patt I. When work measures approx. 18 cm/7.1 in, work next RS row as foll: work 36 sts in patt I, leave next 29 sts on holder/thread (= for pocket), work in patt I until 65 sts rem, leave next 29 sts on holder/thread, work rem 36 sts in patt I. Next row: Cast on 29 sts over the sts on holders, and cont working in patt I. When work measures approx. 29-30-31-32 cm/11.4-11.8-12.2-12.6 in, leave at each edge 32 sts on holder/thread (= front borders, not included in the number of sts given onwards). P 1 row (= WS), adjusting the number of sts evenly across the row to be 356-380-404-434 sts. Cont working in patt II until work measures approx. 49-50-51-52 cm/19.3-19.7-20.1-20.5 in (finishing with a complete patt report). Remember to work selvage sts all the time! K 1 row (= RS), adjusting the number of sts evenly across the row to be 217-231-247-265 sts. Place markers each side, 111-119-127-135 sts for back, and 53-56-60-65 sts for each front. Cont working in patt I, and beg dec for V-neck: Dec 1 st at each edge within selvage st every 4th row (right front: K2togtbl; left front: K2tog). When work measures approx. 51-52-53-54 cm/20.1-20.5-20.9-21.3 in, bind off at each side 16 sts (8 sts on both side of the marker). Put the piece aside, and knit the sleeves.

Sleeves

Using needles size 3 mm, cast on 67-67-75-75 sts. Work back and forth 15 rows in Garter st. P 1 row (= WS), adjusting the number of sts evenly across the row to be 75-75-79-79 sts. Cont working back and forth in patt I. Inc 1 st at each edge every 2 cm/0.8 in (same for all sizes), until work measures approx. 34-35-36-36 cm/13.4-13.8-14.2-14.2 in. P 1 row (= WS), adjusting the number of sts evenly across the row to be 111-115-119-123 sts. When work measures approx. 50-51-52-52 cm/19.7-20.1-20.5-20.5 in, (or desired length), bind off 8 sts at each edge. Work same for the other sleeve. Sew sleeve seams.

Yoke

Slip sleeves in (= where the sts were bound off for armholes) on the same circular needle with the body piece = 371-393-417-443 sts (incl 2 dec for V-neck). Cont working back and forth in patt I and V-neck dec. Beg dec at 4 raglan seam lines: Work until 3 sts rem before 1st seam line, *K2togtbl, K2, K2tog (= WS: P4)*, rep *-* at every seam line. Rep dec every 2nd row altog 33-35-37-39 times. When no sts rem on front, cont working raglan dec on back and sleeves (= 109-113-119-127 sts rem for neck edge). Bind off.

Right front border

S132 sts from holder/thread on needles size 3 mm. Beg from WS. K 1 row, adjusting the number of sts evenly across the row to be 53 sts (= 1st row patt II). Cont working 20 cm/7.9 in, in patt II (fronts borders will be folded on RS). P 1 row, adjusting the number of sts evenly across the row to be 32 sts. Cont working in patt I and inc 2 sts inside selvage st at left edge every 4th row (= M1, K1, M1). Rep inc until collar

reaches up to the shoulder. Cont working in patt I without inc until collar reaches mid back neck edge. Slip sts on holder/thread.

Work same for left border, rev all shaping.

Join mid back seam, and sew front borders to front pieces. Fold the collar on RS, and fasten with sts mid back.

Pockets

Sl29 sts from holder/thread on needles size 3 mm. Work 16 rows in Garter st. Bind off.

Using needles size 3 mm, pick or knit up 29 sts from cast-on sts to knit the pocket. Work back and forth in St st. When work measures approx. 15 cm/5.9 in, bind off. Sew the pocket on WS. Sew Garter st edge's side seams.

Work same for the other pocket.

Belt

Using needles size 3 mm, cast on 15 sts. Work back and forth in patt I. When work measures approx. 160 cm/63 in (or desired length), bind off sts.

Loops (2 pcs)

Cast on 7 sts. Work approx. 7 cm/2.8 in, in patt I, bind off. Sew one each side, below patt II.

Viking Alpaca Silk

Cardigan

1012-5

Viking ALPACA SILK, (50% alpaca, 50% silk), 50 g ball
Alternative yarn: Viking BJØRK, (90% cotton, 50% merino wool), 50 g ball

Size	S	M	L	XL	
Bust	85	92	98	105	cm
	33.5	36.2	38.6	41.3	in
Length	65	66	68	69	cm
	25.6	26	26.8	27.2	in
Sleeve length	50	52	52	54	cm
	19.7	20.5	20.5	21.3	in
Materials					
	Green, 431	12	13	14	15 balls

Pair of knitting needles, circular needle and double pointed needles size 3 mm – US 2 or 3 – UK/Canadian 11.

Crochet hook size 3 mm – US C/2 or D/3 – UK/Canadian 11

Gauge: 25 sts = approx. 10 cm/4 in over St st, using needles size 3 mm. Check your gauge to ensure success.

Double Seed st:

1st row: K2, P2

2nd row: K all k-sts, P all p-sts

3rd row: P2, K2

4th row: K all k-sts, P all p-sts

Rep 1st – 4th row.

CARDIGAN

Body: Using needles size 3 mm and red yarn, cast on 250-262-274-286 sts. Work back and forth in Double Seed st. Place markers each side, 126-132-138-142 sts for back, and 62-66-68-72 sts for each front. Cont working in Seed st. Dec 1 st on both sides of the markers every 2½-3-3½-4½ cm/1-1.2-1.4-1.8 in (before the marker: K2togtbl; after the marker: K2tog, dec altog 4 sts every dec row) altog 9-8-8-6 times = 214-230-242-262 sts rem. When work measures approx. 25-25-27-27 cm/9.8-9.8-10.6-10.6 in, put work aside.

'Belt': Using needles size 3 mm, cast on 38 sts. Work back and forth in K2,P2 rib, until work measures approx. 80-86-92-100 cm/31.5-33.9-36.2-39.4 in. K2tog beg of each row until 2 sts

rem, but after 6 dec at each edge, make a buttonhole in the middle: bind off 4 mid sts. Next row: cast on 4 new sts over the bound-off sts. When 2 sts rem, break yarn and thread through sts. Weave in all ends on WS.

Sew 'belt' to lower edge of the body piece.

Body: Using needles size 3 mm, pick or knit up from the upper edge of the 'belt' approx. 214-230-242-262 sts (not from the dec sts). Cont working back and forth in Double Seed st. Place markers each side, 110-114-122-130 sts for back, and 52-58-60-66 sts for each front. When work measures altog. 43-43-45-45 cm/16.9-16.9-17.7-17.7 in, bind off 16 sts each side (8 sts both sides of each marker). Finish back and front separately.

Back: Cont working back and forth in Seed st. Bind off at each edge every 2nd row 1x4, 1x3, 1x2 and 1x1 sts. When work measures approx. 65-66-68-69 cm/25.6-26-26.8-27.2 in, and armhole measures approx. 22-23-23-24 cm/8.7-9.1-9.1-9.4 in, bind off.

Right front: Work and bind off for armhole same as back.

When work measures approx. 60-60-61-62cm/23.6-23.6-24-24.4 in, bind off at neck edge 16-16-18-18 sts. Bind off at neck edge every 2nd row 1x3, 1x2 and 1x1 sts. When work measures same as back, bind off sts.

Work same for left front, reversing all shaping.

Sleeves: Using needles size 3 mm, cast on 50-50-50-50 sts. Work back and forth in K2,P2 rib until work measures 20-22-22-24 cm/7.4-8.7-8.7-9.4 in (= border). Bind off. Pick or knit up along the edge of the border approx. 62-66-66-70 sts. Cont working in Double Seed st. Inc 1 st at each edge approx. every 1½ cm/0.6 in (same for all sizes) until you have 110-114-114-120 sts on a row (**Note!** Inc sts are worked in Double Seed st). When work measures 50-52-52-54 cm/19.7-20.5-20.5-21.3 in, or desired length, bind off at each edge 8 sts. Bind off at each edge every 2nd row 1x4, 1x3, 1x2 and 1x1 sts. Bind off rem sts. Work same for the other sleeve.

Finishing

Sew shoulder seams, and seam under arm.

Neck border/Collar

Beg from left front. Pick or knit up from WS approx. 114-118-122-122 sts. Work 6 rows in K2,P2. MP1 in each p-stripe, and cont working in K2,P3 rib. When work measures approx. 6-7-7-8 cm/2.4-2.8-2.8-3.1 in, M1 in each k-stripe, and cont working in K3,P3 rib. When work measures approx. 10-12-12-14 cm/3.4-4.7-4.7-5.5 in, bind off in rib.

Crochet front borders

Using crochet hook size 3 mm, work 2 rows sc (take care that border doesn't turn out to be too tight or loose). Work same for the other front. Sew the zipper, from the 'belt' up to neck edge. Sew in button. Weave in all ends on WS. Set in sleeves.

Viking Alpaca Silk

Bag

1012-6

Viking **ALPACA SILK** (50% alpaca, 50% silk), 50 g ball
Alternative yarn: Viking **BJØRK** (90% cotton, 10% merino wool), 50 g ball

Size: approx. 35x30x12
cm/13.8x11.8x4.7 in

Materials

Brown, 418 4 balls
+ 1 ball of each clr, Blue, 425 - Mustard, 445 - Dark Violet,
468 - Red, 450 - Light Violet, 467 - Grey, 415 - Light Pink -
465 - Green, 431 - Marine, 426 - Cherry, 464 - Light Blue,
424 - Light Grey, 413

Pair of knitting needles size 3 mm - US 2 or 3 - UK/Canadian 11

Crochet hook size 3½ mm - US E/4 -UK/Canadian 9

Bag handles

approx. 50 paper fasteners for embellishment

Some cardboard in order to make the bag more rigid (if desired).

Gauge: 25 sts = approx. 10 cm/4 in over St st using needles size 3 mm.

1 crochet square = approx. 7x7 cm/2.8x2.8 in. Check your gauge to ensure success.

Abbreviations: **ch** = chain st; **dc** = double crochet; **sl st** = slip st; **sc** = single crochet

Seed st

1st row: *K1, P1*

2nd row: K all p-sts, P all k-sts

Rep 2nd row.

Crochet square

Work altog 40 squares in different clrs (3 or 4 squares in each clr)

Using crochet hook size 3½ mm, ch6. Join into ring with 1 sl st.

1st rnd: Ch2, (=1st dc), 21 dc into ring, join with 1 sl to 2nd ch in beg.

2nd rnd: Ch1 (= 1st dc), 1 sc to each st, join with 1 sl st to ch1 in beg.

3rd rnd: Ch2 (= 1st dc), 1 dc, 2 dc to each st, join with 1 sl st to 2nd ch in beg = 44 sts.

4th rnd: Ch2 (= 1st dc), 1 dc to each st, join with 1 sl st to 2nd ch in beg.

5th rnd: Ch1 (= 1 st sc), 4 sc, ch1, 3 dc to same st, ch1, 10 sc, ch1, 3 dc to same st, ch1, 10 sc, ch1, 3 dc to same st, ch1, 10 sc, ch1, 3 dc to same st, ch1, 5 sc, join with 1 sl st to ch1 in beg.

Sides and bottom:

Worked in double yarn.

Using needles size 3 mm and brown yarn, cast on 25 sts. Work back and forth in Seed st. When work measures approx. 94 cm/37 in (slightly stretched when measured), bind off. (The piece will measure approx. 2 cm/0.8 in more than the sides of the bag).

Pieces (2) for fixing the handles:

Worked in double yarn.

Using needles size 3 mm and brown yarn, cast on 21 sts. Work back and forth in Seed st. When work measures approx. 19

cm/7.5 in, or the size of chosen handles (slightly stretched when measured), bind off.

Finishing: Weave in all ends on WS. Dampen the crocheted squares, leave flat to dry. Join the squares according to your preference (or see the photo). Beg crocheting the squares tog first horizontally, then join the strips lengthways.

Crocheting the squares tog: Beg with squares 1 and 6 (left corner), squares placed as shown below:

1	2	3	4	5
6	7	8	9	10
11	12	13	14	15
16	17	18	19	20

Hold squares WS facing each other. using brown yarn, beg from one corner, ch1, insert hook through both squares (1sc, ch1, 1 sc) 10 times, ch3 when passing on to the next square, (1 sc, ch1, 1 sc) 10 times.

Join first 5 strips, with 4 squares in each (1 + 6 + 11 +16, 2 + 7 + 12 + 17, and so on), then join the strips (1+ 2 + 3 + 4 + 5, 6 + 7 + 8 + 9 + 10, and so on), same ways as described earlier, with ch3 between the squares forming a cross over ch-3.

Work same for the other side.

Do not dampen the pieces after joining the squares tog.

Beg from WS and crochet 2 rows dc along the longer upper edges (= over the squares), so that the height matches with the sides (turn with ch2). Sew border edges to the upper parts of the sides (= 2 cm/0.8 in). Using double brown yarn, cont by sewing from RS bottom and sides to front and back pieces of the bag. Fold the upper edges of the side pieces and sew on WS with double yarn.

Sew the pieces for fixing the handles to the longer edges. Fold the pieces with approx. 2/3 on RS, 1/3 on WS.

Viking Alpaca Silk

Hat and legwarmers

1012-7

Viking **ALPACA SILK** (50% alpaca, 50% silk), 50 g ball
Alternative yarn: Viking **BJØRK** (90% cotton, 10% merino wool), 50 g ball

Size	Woman	
Circumference	50	cm
	19.7	in

Materials

Hat

Black, 403	1	ball
White, 402	2	balls

Legwarmers

Black, 403	2	balls
White, 402	2	balls

Double pointed needles and short circular needle size 2½ and 3 mm - US 1 or 2 and 2 or 3 - UK/Canadian 13 or 12 and 11

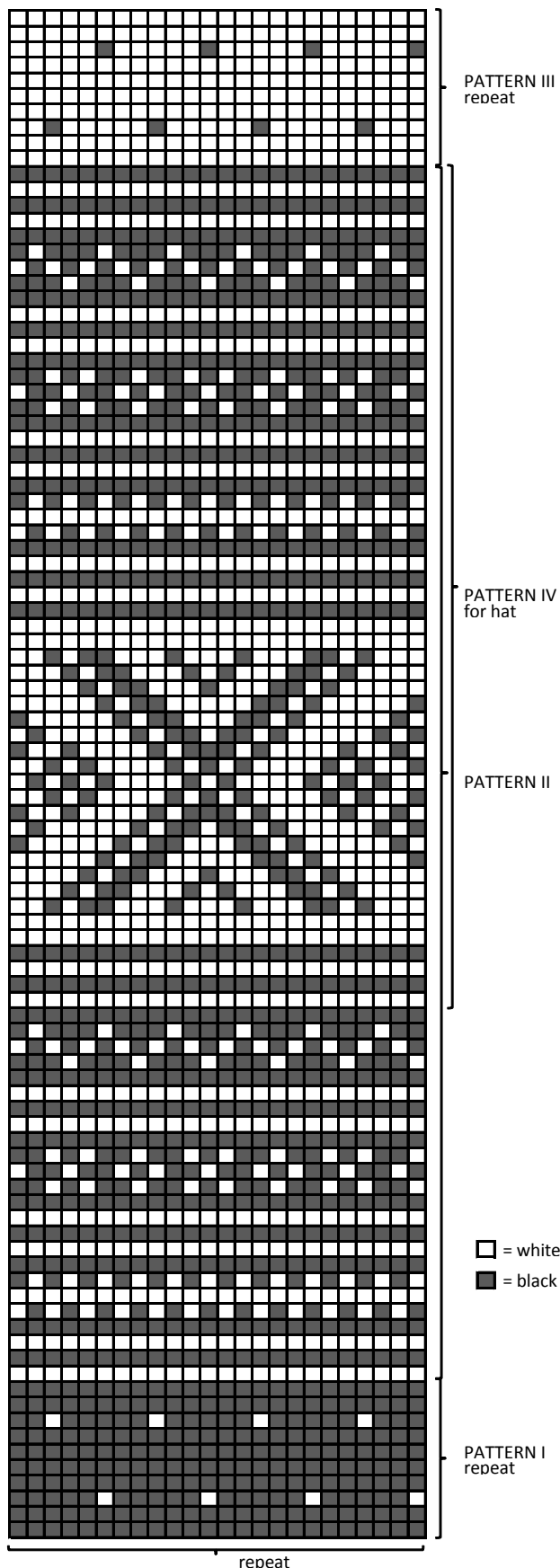
Gauge: 25 sts = approx. 10 cm/4 in over St st using needles size 3 mm. Check your gauge to ensure success.

HAT

Using needles size 2½ mm and black yarn, cast on 124 sts. Work in rnds 4 cm/1.6 in, in K2,P2 rib. Change to needles size 3 mm. K 1 rnd, adjusting the number of sts evenly across the rnd to be 144 sts. Cont working in rnds in patt IV as charted. After completing chart IV, cont working in patt III until the end. When work measures approx. 23 cm/9.1 in, measured from the cast-on edge, beg crown dec: *K4, K2tog*, rep *-* across the rnd. K 1 rnd. Next rnd: *K3, K2tog*, rep *-* across the rnd. Rep dec every 2nd rnd with 1 st less between each dec until 48 sts rem on the rnd. K all sts tog in pairs = 24 sts rem. Break yarn, thread through rem sts and pull tightly. Weave in ends on WS. Make pompon using white yarn, and fasten on top.

LEGWARMERS

Using needles size 2½ mm and black yarn, cast on 96 sts. Work 7 cm/2.8 in, in K2,P2 rib. Change to needles size 3 mm, K 1 rnd. Cont working in patt I as charted. When you have finished 3 dotted rows in height, complete the patt as charted, and cont working in patt II, and after that in patt III (again work 3 dotted rows in height, same as beg of the work). Change to needles size 2½ mm, and white yarn. Work 7 cm/2.8 in, in K2,P2 rib. Bind off rather loosely. Weave in all ends on WS.



Viking Alpaca Silk

Sweater

1012-8

Viking **ALPACA SILK** (50% alpaca, 50% silk), 50 g ball
Alternative yarn: Viking **BJØRK** (90% cotton, 10% merino wool), 50 g ball

Size	S	M	L	
Bust	96	105	115	cm
	37.8	41.3	45.3	in
Length	49	50	51	cm
	31.5	32.3	33.1	cm
Sleeve length	49	50	51	cm
	19.3	19.7	20.1	in

Materials

Black, 403	6	6	7	balls
White, 402	8	8	9	balls

Double pointed needles and circular needle size 2½ and 3 mm - US 1 or 2 and 2 or 3 - UK/Canadian 13 or 12 and 11

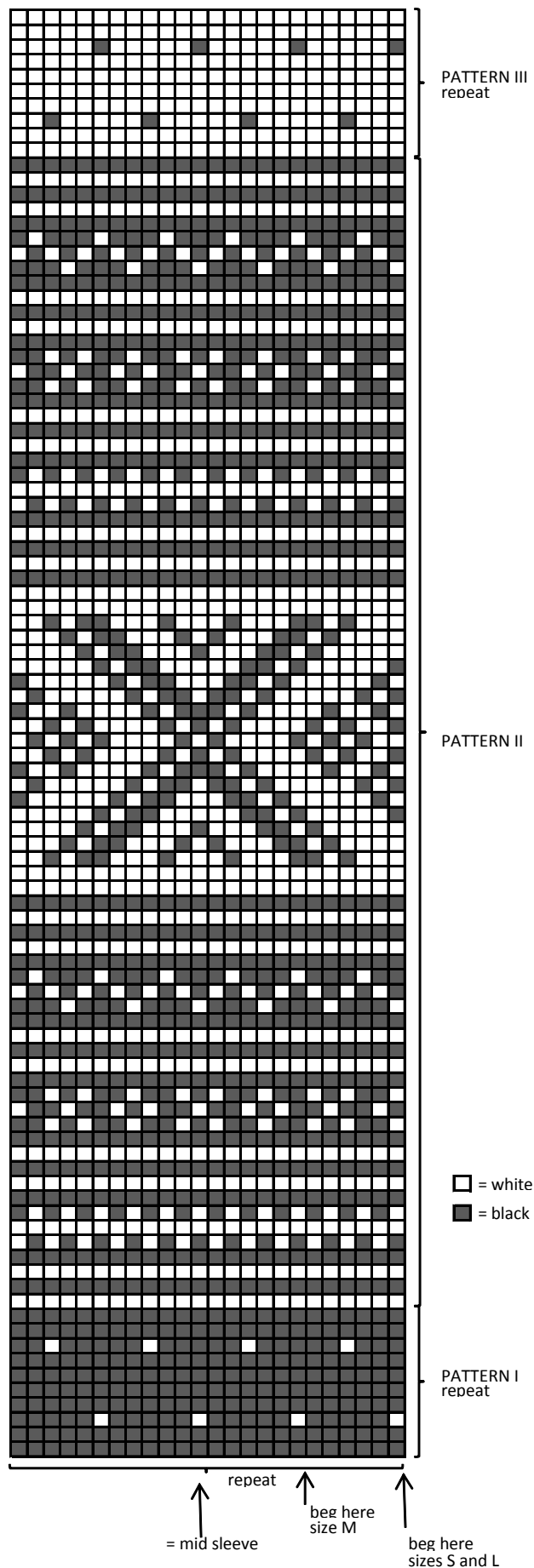
Gauge: 25 sts = approx. 10 cm/4 in over St st using needles size 3 mm. Check your gauge to ensure success.

SWEATER

Using needles size 2½ mm and white yarn, cast on 240-264-288 sts. Work in rnds 7 cm/2.8 in, in K2,P2 rib. Place markers each side, 121-133-145 sts for front, and 119-131-143 sts for back. Change to needles size 3 mm. Cont working in patt I as charted. When work measures approx. 25-26-27 cm/9.8-10.2-10.6 in, cont working in patt II as charted. After completing chart II, cont working in patt III until the end. When work measures 57-59-60 cm/22.4-23.2-23.6 in, bind off 20 sts at each side (10 sts both sides of the markers). Put piece aside, and knit the sleeves.

Sleeves: Using needles size 2½ mm and white yarn, cast on 56-60-60 sts. Work in rnds 7 cm/2.8 in, in K2,P2 rib. Change to needles size 3 mm. K 1 rnd, adjusting the number of sts evenly across the rnd to be 76-78-80 sts. Cont working in patt I as charted. When you have finished 3 dotted rnds in height, place marker mid under arm, and inc 1 st both sides of the marker approx. every 2 cm/0.8 in (same for all sizes). End patt I as shown in the chart, and cont working in patt II as charted. When chart II is completed, cont working in patt III until the end. When work measures approx. 49-50-51 cm/19.3-19.7-20.1 in, or desired length, and you have altog. 115-115-119 sts on a rnd (**Note!** End with same rnd as body piece), bind off mid under arm 20 sts (10 sts both side of the marker). Work same for the other sleeve.

Yoke: Slip all sts in (= where sts were bound off for armholes) on the same circular needle with body piece = 390-444-446 sts. K 1 rnd and dec evenly across the rnd 0-0-2 sts. Cont working in rnds in patt III. Dec at each raglan seam as foll: work until 3 sts rem before marker, K2togtbl, K2, K2tog (**Note!** Don't work in patt over 2 sts between dec). Rep dec every 2nd rnd until 118-126-134 sts rem. K 1 rnd, and dec 2 sts evenly across the rnd = 116-124-132 sts. Cont working in rnds in K2,P2 rib, using white yarn. When neck border measures approx. 20 cm/7.9 in, bind off in rib. Sew under arm seams. Weave in all ends on WS.



Viking Alpaca Silk

Sweater

1012-9

Viking **ALPACA SILK** (50% alpaca, 50% silk), 50 g ball
Alternative yarn: Viking **BJORK** (90% cotton, 10% merino wool), 50 g ball

Size	S	M	L	XL	
Chest	91	98	105	112	cm
	35.8	38.6	41.3	44.1	in
Length	64	66	68	70	cm
	25.2	26	26.8	27.6	in
Sleeve length	50	51	52	52	cm
	19.7	20.1	20.5	20.5	in
Materials					
White, 402	1	2	2	3	balls
Brown, 418	2	2	3	3	balls
Blue, 425	8	9	9	10	balls
Green, 431	1	2	2	3	balls
Dark Violet, 468	1	2	2	3	balls

Circular needle and double pointed needles size 5 mm - US 8 - UK/Canadian 4

Crochet hook size 5 mm - US H/8 - UK/Canadian 6

Gauge, in double yarn: 15 sts = approx. 10 cm/4 in over St st using needles size 5 mm. Check your gauge to ensure success.

Stripes: 2 rnds in white - 4 rnds in dark violet - 2 rnds in green - 6 rnds in brown - 4 rnds in white - 2 rnds in blue - 4 rnds in green - 2 rnds in brown - 4 rnds in dark violet - 2 rnds in white - 2 rnds in green - 4 rnds in brown - 6 rnds in blue. Rep stripes throughout the work.

Selvage st: K 1st and last st every row.

SWEATER

Note! The garment is worked in double yarn.

Using needles size 5 mm and blue yarn, cast on 136-148-156-168 sts. Work in rnds approx. 6-6-7-8 cm/2.4-2.4-2.8-3.1 in, in K2,P2 rib. Place markers each side, 68-74-78-84 sts for both back and front. Change to white yarn, and cont working in St st with stripes. When work measures approx. 40-41-42-43 cm/5.7-16.1-16.5-16.9 in, bind off 8 sts at each side (4 sts both sides of the markers). Finish back and front separately.

Back

Cont working back and forth in St st with stripes. Bind off at edge for armholes every 2nd row 1x3, 1x2 and 1x1 sts (same for all sizes). When work measures approx. 64-66-68-70 cm/25.2-26-26.8-27.6 in (or desired length), and armhole measures approx. 24-25-26-27 cm/15.7-16.1-16.5-16.9 in, bind off.

Front

Work and bind off for armholes same as for back. When work measures approx. 59-61-63-65 cm/23.2-24-24.8-25.6 in, bind off mid 18-18-20-20 sts. Finish each side separately. Bind off at neck edge every 2nd row 1x3, 1x2 and 1x1 sts. When work measures same as back, bind off. Work same for the other side, rev all shaping.

Sleeves

Using needles size 5 mm and blue yarn, cast on 40-40-42-42 sts. Work in rnds 6-6-7-8 cm/2.4-2.4-2.8-3.1 in, in K2,P2 rib. K 1 rnd, adjusting the number of sts evenly across the rnd to be 50-50-52-52 sts. Place marker mid under arm. Slip 10 mid front sts on holder/thread (these sts will be worked later, same

for all sizes). Cont working back and forth inside selvage sts in St st and blue yarn over rem 40-40-42-42 sts (20-20-21-21 sts on both sides of the marker). Inc 1 st both sides of the marker every 6th row until you have 62-66-68-70 sts on a row. Cont working without inc, until work measures approx. 50-51-52-52 cm/19.7-20.1-20.5-20.5 in (measured from cast-on edge). Bind off mid under arm 8 sts (4 sts both side of the marker). Finish each side separately. Bind off for armhole every 2nd row 1x3, 1x2 and 1x1 sts. Work same for the other side, rev all shaping. Slip sts from holder on needles and work back and forth inside selvage sts in St st with stripes until work measures same as sleeve. Bind off. Crochet (= sc) (or sew) sleeve seams from RS, using blue yarn. Work same for the other sleeve.

Finishing

Sew shoulder seams.

Neck border

Beg mid back, using needles size 5 mm and blue yarn, pick or knit up approx. 72-76-80-84 sts (number of sts must be divisible by 4). Work in rnds approx. 3-4-4-4 cm/1.2-1.6-1.6-1.6 in. in K2,P2 rib. Bind off in rib.

Weave in all ends on WS.

Viking Alpaca Silk

Top

1012-10

Viking **ALPACA SILK** (50% alpaca, 50% silk), 50 g ball
Alternative yarn: Viking **BJORK** (90% cotton, 10% merino wool), 50 g ball

Size	S	M	L	
Bust	80	86	90	cm
	31.5	33.9	35.4	in
Length	56	57	58	cm
	22	22.4	22.8	in
Sleeve length	16	17	18	cm
	6.3	6.7	7.1	in

Materials

Blue, 425 7 8 9 balls

Circular needle and double pointed needles size 3 mm - US 2 or 3 -UK/Canadian 11

2 buttons

Gauge: 25 sts = approx. 10 cm/4 in over St st using needles size 3 mm. Check your gauge to ensure success.

TOP

Using needles size 3 mm and blue yarn, cast on 200-216-224 sts. Work approx. 10cm/4 in, in K2,P2 rib. Place markers each side, 100-108-112 sts for oth back and front. Cont working in K6,P2 rib. When work measures approx. 37-37-37 cm/14.6 in, bind off for armhole 8 sts each side (=4 sts both sides of the markers). Put work aside, and knit the sleeves.

Sleeves

Using needles size 3 mm and blue yarn, cast on 64-72-80 sts. Work approx. 3 cm/1.2 in, in K2,P2 rib. Place a marker mid under arm, and cont working in K6,P2 rib. Inc 1 st both sides of the marker approx. every 4th rnd until you have altog 88-96-104 sts on the rnd. When work measures 16-17-18/6.3-6.7-7.1 in, or desired length, bind off 8 sts mid under arm (4 sts both sides of the marker). Put work aside, and knit the other sleeve.

Yoke (read text before starting)

Slip all sts on same circular needle (= sleeve sts over the bound-off sts for armholes) = 344-376-400 sts. Adjust the number of sts evenly across over the rnd to be 352-384-400 sts. Work in rnds over allsts in K6,P2 rib. Dec approx. every 2-2 ½-2 ½ cm/0.8-1-1 in as foll: First dec rnd K6, P2, K2tog, K4, P2,(dec 1 st every other St st-panel). Second dec rnd K2tog,

K4, P2, K5, P2 (dec 1 st in each rem Stst-panel). Cont dec in every other St st-panel altog 8 times(same for all sizes) until 172-188-200 sts rem, **but** when work measures approx. 46-47-48 cm/18.1-18.5-18.9 in, bind off 2 sts mid back for split. Cont working back and forth until work measures 56-57-58 cm/22-22.4-22.8 in. Work split borders before continuing with neck border.

Split back: Beg from lower edge of right side of the split. Using needles size 3 mm, and pick or knit up approx. 25 sts. Work back and forth 4 rows in Garter st. Bind off. Work same for left edge, but make 2 buttonholes on 2nd row. Buttonhole: Bind off 2 sts. Next row: Cast on 2 new sts over the bound-off sts. Make one buttonhole up near to neck edge, and the other one in the middle.

Neck border: Pick or knit up 4 sts from split borders and cont working back and forth over all sts. Work 8 rows in Garter st, adjusting the number of sts evenly across first row to be 180-198-207 sts. Cont as foll: *Work back and forth over 9 sts. Bind off 1 st beg of each row until 3 sts rem, sl1, K2tog, pssso. Break yarn, thread through last st*. Rep*-* altog 20-22-23 times. Weave in ends on WS.

Viking Alpaca Silk

Hat

1012-11

Viking ALPACA SILK (50% alpaca, 50% silk), 50 g ball
Alternative yarn: Viking BJØRK (90% cotton, 10% merino wool), 50 g ball

Size	2/4	6/10	12/14	yrs
Circumference	43	48	52	cm
	16.9	18.9	20.5	in

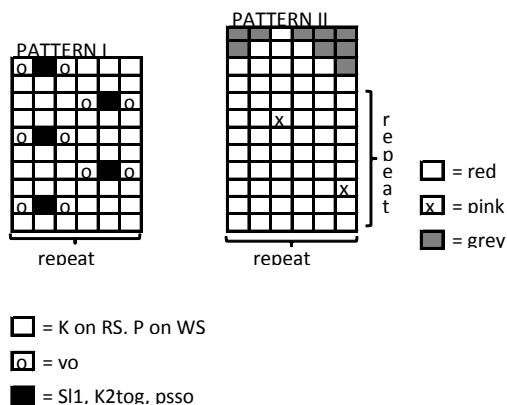
Materials

Light Pink, 465	1	1	1	ball
Red, 450	1	1	1	ball
Grey, 415	1	1	1	ball
Brown, 418	1	1	1	ball

Circular needles and double pointed needles size 3 mm – US 2 or 3 – UK/Canadian 11

Gauge: 25 sts = approx. 10 cm/4 in over St st using needles size 3 mm. Check your gauge to ensure success.

Using needles size 3 mm and light pink yarn, cast on 138-144-150 sts. Work in patt I as charted. K 1 rnd, adjusting the number of sts evenly across the rnd to be 108-114-120 sts. Cont working in rnds in St st with stripes: *2 rnds in grey, 2 rnds in brown*, rep until you have completed altog 7 stripes (last stripe in grey). Cont working in patt II, until you have 5 dotted rnds altog. End patt as charted. Cont working in St st with stripes: *2 rnds in grey, 2 rnds in brown*, rep *-* until work measures approx. 18-20-22 cm/7.1-7.9-8.7 in (measured from cast-on edge). Beg dec same time as working with stripes (There should be equal number of stripes as in the beg, cont working in light pink after stripes). Dec for crown: *K4, K2tog*, rep across the rnd. Work 2 rnds without dec. Rep dec every 3rd rnd with 1 st less between each dec until 36-38-40 sts rem (Remember to change to light pink after stripes). Next rnd: K all sts tog in pairs = 18-19-20 sts rem. Cont working in St st over rem sts until "top" measures approx. 3 cm/1.2 in. K all sts tog in pairs. Break yarn, and thread through rem sts. Pull tightly and weave in ends on WS. Twist a cord using red yarn and thread through last eyelet rnd in patt I. Tie a bow on one side.



Viking Alpaca Silk

Hat

1012-12

Viking ALPACA SILK (50% alpaca, 50% silk), 50 g ball
Alternative garn: Viking BJØRK (90% cotton, 10% merino wool), 50 g ball

Size	2/4	6/10	12/14	yrs
Circumference	43	48	52	cm
	16.9	18.9	20.5	in

Materials

Marine Blue, 426	1	1	1	ball
Light Blue, 424	1	1	1	ball
Mustard, 445	1	1	1	ball

Circular needle and double pointed needles size 3 mm – US 2 or 3 – UK/Canadian 11

Gauge: 25 sts = approx. 10 cm/4 in over St st using needles size 3 mm. Check your gauge to ensure success.

HAT (worked in 2 pieces)

Beg with one half. Using needles size 3 mm and light blue yarn, cast on 60-60-72 sts. Work 5 rows in K6,P6 rib. Cont working in rib with stripes: 2 rows in mustard, 4 rows in light blue, 2 rows in mustard, 4 rows in light blue, 2 rows in marine blue. Cont working in light blue until work measures approx. 17-19-21 cm/6.7-7.5-8.3 in. Beg crown dec: *K2 togtbl, K2, K2tog, P2, P2tog, P2*, rep *-* across the row. Work 3 rows without dec. Next row: Work 1 st, dec 1 st (= K2tog over k-sts, P2tog over p-sts). Work 3 rows without dec. Next row: K all sts tog in pairs. Work 3 back and forth rows, and K all sts tog in pairs again. Break yarn, and thread through rem sts. Other half: Using needles size 3 mm and marine blue yarn, cast on 60-60-72 sts. Work 5 rows in K6,P6 rib. Cont working in rib with stripes: 2 rows in mustard, 4 rows in marine blue, 2 rows in mustard, 4 rows in marine blue, 2 rows in light blue. Cont working in marine blue until work measures approx. 17-19-21 cm/6.7-7.5-8.3 in. Dec for crown same as for the other half.

Sew side and crown seams. Using mustard clr yarn, make a pompon and fasten on top. Weave in all ends on WS.

Viking Alpaca Silk

Hat

1012-13

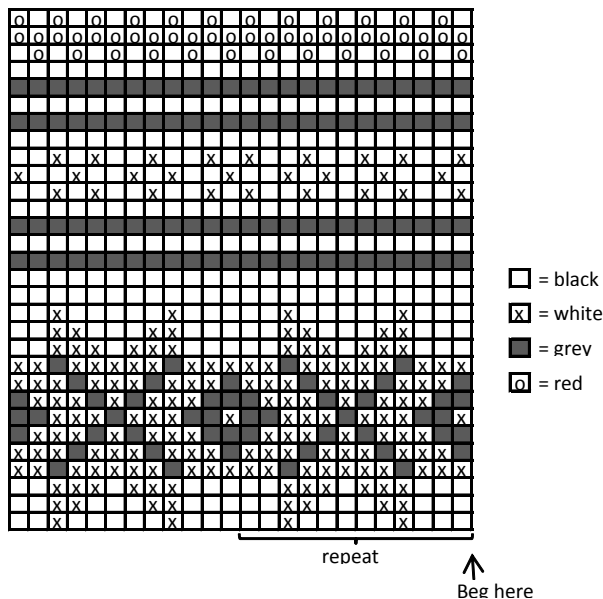
Viking **ALPACA SILK** (50% alpaca, 50% silk), 50 g ball
Alternative yarn: Viking **BJØRK** (90% cotton, 10% merino wool), 50 g ball

Size	2/4	6/10	12/14	yrs
Circumference	43	48	52	cm
	16.9	18.9	20.5	in

Materials

Black, 403	1	1	2	balls
White, 400	1	1	1	ball
Grey, 415	1	1	1	ball
Red, 450	1	1	1	ball

Using needles size 3 mm and black yarn, cast on 100-108-116 sts. Work in rnds approx. 3 cm/1.2/ in, in K2,P2 rib. K 1 rnd, adjusting the number of sts evenly across the rnd to be 120-132-144 sts. Cont working in rnds in patt as charted. After patt, cont in St st and black yarn. When work measures approx. 17-19-21 cm/6.7-7.5-8.3 in, beg crown dec: *K2, K2tog*, rep *- across rnd. Work 3 rnds without dec. Rep dec every 4th rnd with 1 st less between dec until 40-44-48 sts rem. Next rnd: K all sts tog in pairs. Break yarn, thread through rem sts. Pull tightly, and weave in ends on WS. Using red clr yarn, make a pompon and fasten it on top.



Viking Alpaca Silk

Sweater with hood

1012-14

Viking **ALPACA SILK** (50% alpaca, 50% silk), 50 g ball
Alternative yarn: Viking **BJØRK** (90% cotton, 10% merino wool), 50 g ball

Size	2	4	6	8	10/12	yrs
Chest	60	64	70	76	80	cm
	23.6	25.2	27.6	29.9	31.5	in
Length	36	40	45	50	55	cm
	14.2	15.7	17.7	19.7	21.7	in
Sleeve length	28	31	34	38	43	cm
	11	12.2	13.4	15	16.9	in

Materials

Light Blue, 424	3	4	4	5	6	balls
Red, 450	3	4	4	5	5	balls
White, 400	1	1	1	1	1	ball

Double pointed needles and circular needle size 2½ and 3 mm – US 1 or 2 and 2 or 3 -UK/Canadian 13 or 12 and 11

Gauge: 25 sts = approx. 10 cm/4 in over St st using needles size 3 mm. Check your gauge to ensure success.

Body

Using circular needle size 2½ mm and blue yarn, cast on 152-160-176-192-200 sts. Work in rnds approx. 4-5-5-6-6 cm/1.6-2-2-2.4-2.4 in, in K2,P2 rib. Change to needles size 3 mm, and K 1 rnd. Place markers both sides, 77-81-89-97-101 sts for front and 75-79-87-95-99 sts for back. Cont working in rnds in patt until work measures approx. 21-24-28-32-36 cm/8.3-9.4-11-12.6-14.2 in. Bind off 12 sts both sides (6 sts both sides of the markers). Finish each side separately. (If you wish, you can continue to work in one piece, in rnds, and cut it open in the end: cast on 3 sts over the bound-off sts on each side, and P each rnd until neck edge. From here on cont working back and forth. See neck edge dec 'Front').

Back (back and forth)

Cont working back and forth in patt as charted. When work measures approx. 36-40-45-50-55 cm/14.2-15.7-17.7-19.7-21.7 in, and armhole measures approx. 15-16-17-18-19 cm/5.9-6.3-6.7-7.1-7.5 in, bind off.

Front (back and forth)

Work same as for back. When work measures approx. 31-35-40-44-49 cm/12.2-13.8-15.7-17.3-19.3 in, bind off mid 25-29-31-31-33 sts. Finish each side separately. Bind off at neck edge every 2nd row 1x3, 1x2 and 1x1 sts. When work measures same as back, bind off. Work same for the other side.

Sleeves

Using dpn size 2½ mm and blue yarn, cast on 40-40-44-44-48 sts. Work in rnds approx. 4-5-5-6-6 cm/1.6-2-2-2.4-2.4 in, K2,P2 rib. K 1 rnd, adjusting evenly across the rnd the number of sts to be 55-57-61-65-67 sts. Cont working in rnds in patt as charted. Place marker mid under arm. Inc 1 st both sides of the marker approx. every 2-2-2-2-2½ cm/0.8-0.8-0.8-0.8-1 in until you have 75-81-85-91-95 sts on a rnd. When sleeve measures 28-31-34-38-43 cm/11-12.2-13.4-15-16.9 in, or desired length, if you wish to cut the armholes to the body, turn sleeve inside out, and work 5 rnds for seam allowance (will be sewn over the seam on WS).

Finishing: Sew shoulder seams. Note! If the garment has been worked in rnds, sew 2 machine seams on both sides around armholes. Cut open between seams. Sew shoulder seams.

Hood: Using needles size 3 mm and red yarn, cast on 98-106-110-116-120 sts. Work back and forth 8 rows in St st. K 1 row(= WS, folding edge) + 7 rows in St st. Cont working back and forth in St st until work measures approx. 7-8-8-9-9 cm/2.8-3.1-3.1-3.5-3.5 in, measured from folding edge. Bind off 1 st every 4th row altog. 4-4-5-5-5 times = 90-98-100-106-110 sts. When work measures approx. 18-20-20-22-24 cm/7.1-7.9-7.9-8.7-9.4 in, bind off at each edge every 2nd row 8-9-9-9-9 sts 5-5-5-5-5 times. Bind off 10-8-10-16-10 sts. Sew mid back seam. Fold front border in double and sew on WS. Using red yarn, twist a cord and thread through folding edge. Sew hood along neck edge.

Viking Alpaca Silk

Sweater

1012-15

Viking **ALPACA SILK** (50% alpaca, 50% silk), 50 g ball
Alternative yarn: Viking **BJØRK** (90% cotton, 10% merino wool), 50 g ball

Size	2	4/6	8/10	12	yrs
Chest	63	72	80	85	cm
	24.8	28.3	31.5	33.5	in
Length	36	44	52	58	cm
	14.2	17.3	20.5	22.8	in
Sleeve length	26	31	38	43	cm
	10.2	12.2	15	16.9	in

Materials

Light Grey, 413	5	6	7	8	balls
Light Violet, 467	2	2	2	2	balls
Green, 431	1	1	1	1	ball
Mustard, 445	1	1	1	1	ball
Dark Violet, 468	1	1	1	1	ball

Double pointed needles and circular needle size 2½ and 3 – US 1 or and 2 or 3 - UK/Canadian 13 or 12 and 11

Gauge: 25 sts = approx. 10 cm/4 in over St st using needles size 3 mm. Check your tension to ensure success.

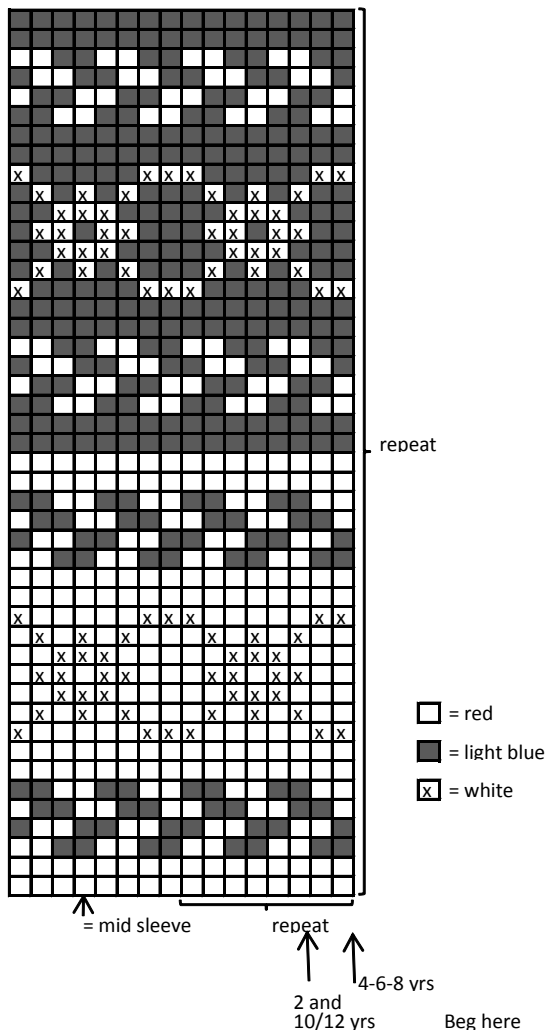
Body

Using circular needle size 2½ mm and light grey yarn, cast on 160-180-200-210 sts. Work in rnds 5-6-6-7 cm/2-2.4-2.4-2.8 in, in K1,P1 rib. Change to needles size 3 mm, and cont working in St st until work measures approx. 21-28-35-40 cm/8.3-11-13.8-15.7 in. Place markers each side, 81-91-101-105 sts for front, and 79-89-99-105 sts for back. Bind off 12 sts each side (6 sts both sides of the markers). Put work aside, and knit sleeves.

Sleeves

Using dpn size 2½ and light grey yarn, cast on 44-48-48-52 sts. Work in rnds 5-6-6-7 cm/2-2.4-2.4-2.8 in, in K1,P1 rib. Change to dpn size 3 mm. K 1 rnd, adjusting the number of sts evenly across the rnd to be 59-63-67-71 sts. Cont working in St st. Place a marker mid under arm. Inc 1 st both sides of the marker approx. every 2½-2½-3½-3½ cm/1-1-1.4-1.4 in until you have 75-81-85-91 sts on a rnd. When work measures 26-31-38-43 cm/10.2-12.2-15-16.9 in, or desired length, bind off 12 sts mid under arm (6 sts both sides of the marker). Work same for the other sleeve.

Yoke: Slip sleeve sts over the bound-off sts for armholes, on same circular needle as body = 262-294-322-344 sts. Beg from back. K 1 rnd, adjusting the number of sts evenly across the rnd to be 260-290-320-340 sts. Cont working in patt and dec as charted = 104-116-128-136 sts rem for neck border. Change to light violet. K 1 rnd, adjusting the number of sts evenly across the rnd to be 96-100-112-116 sts. Cont working in K1,P1 rib, until neck border measures approx. 15-15-17-19 cm/5.9-5.9-6.7-7.5 in. Bind off in rib. Fold neck border in double on Rs. Weave in all ends on WS.



□ = red
 ■ = light blue
 x = white

